

# NORBURY OLD MANOR

Norbury Hollow, Norbury, Derbyshire



## Historic Building Survey on behalf of the National Trust

Volume 2: Photographs (Appendix 5)

MAY 2018  
FINAL

Document No: TJC2018.21



Office contact details

The JESSOP Consultancy  
Cedar House  
38 Trap Lane  
Sheffield  
South Yorkshire  
S11 7RD

Tel: 0114 287 0323

The JESSOP Consultancy  
1 Sherbrook House  
Swan Mews  
Lichfield  
Staffordshire  
WS13 6TU

Tel: 01543 479 226

The JESSOP Consultancy  
The Wheel House  
Angel Court  
81 St Clements  
Oxford  
OX4 1AW

Tel: 01865 364 543

**Disclaimer** This document has been prepared with the best data made available at the time of survey and research. It is, therefore, not possible to guarantee the accuracy of secondary data provided by another party, or source. The report has been prepared in good faith and in accordance with accepted guidance issued by the Chartered Institute for Archaeologists 2014. Digital versions of this document may contain images that have been down-sampled and are reduced in quality.

**Copyright** The copyright of this document is assigned to the Client, however the JESSOP Consultancy must be acknowledged as the author of the document.

**TJC** The JESSOP Consultancy is the trading name of TJC Heritage Limited, a United Kingdom Registered Company - No.9505554.



## **APPENDIX 5:**

### SITE PHOTOGRAPHS



Appendix 5.1: General view of Norbury Manor (Building I), looking northwest (Photo 4)



Appendix 5.2: Principal façade of Norbury Manor (Building I), looking north (2m scale) (Photo 7)





**Appendix 5.3:** View of Norbury Manor and gazebo, looking northeast (1m scale) (Photo 9)



**Appendix 5.4:** View of southwest corner of Norbury Manor (Building 1) (2m scale) (Photo 12)





Appendix 5.5: General view of Norbury Manor from the churchyard (1m scale) (Photo 39)



Appendix 5.6: View of Old Hall (Building 2), looking northwest (2m scale) (Photo 40)





**Appendix 5.7:** View of Old Hall (Building 2), looking southeast (2m scale) (Photo 42)



**Appendix 5.8:** General view of west gable of Church (2m scale) (Photo 44)





Appendix 5.9: View of Old Hall (Building 2), looking southeast (Photo 14)



Appendix 5.10: Detail of well in rear garden, looking south (1m scale) (Photo 20)





Appendix 5.21: Detail of false doorway in north garden wal, looking north (1m scale) (Photo 18)



Appendix 5.12: Detail of blocked doorway in garden wall, looking south (1m scale) (Photo 43)





Appendix 5.13: Detail of dovecote in northwest end of garden wall (1m scale) (Photo 15)





**Appendix 5.14:** General view looking south down avenue in front of house (2m scale) (Photo 8)



**Appendix 5.15:** View looking east across site of demolished barn (2m scale) (Photo 10)





Appendix 5.16: Detail of façade of Building I, looking north (1m/2m scale) (Photo 1)



Appendix 5.17: View of façade of Building I, looking north (1m/2m scale) (Photo 2)





**Appendix 5.18:** Detail of restored window in façade of Building 1 (2m scale) (Photo 31)





**Appendix 5.19:** Detail of restored 1<sup>st</sup> floor window in façade of Building 1 (Photo 32)





Appendix 5.20: Detail of inserted doorway to east courtyard (1 m scale) (Photo 33)





Appendix 5.21: General view of gardens, looking southeast (Photo 17)



Appendix 5.22: View of north elevation of (Building 1) (2m scale) (Photo 25)





Appendix 5.23: Detail of rear flat roof above Building 1; note gable scars (Photo 107)



Appendix 5.24: Detail of east elevation of Building 1; note roof scar (2m scale) (Photo 36)





Appendix 5.25: Detail of north door into Building 1; note inscription above (2m scale) (Photo 28)





**Appendix 5.26:** General view of northwest corner of Building 1 (2m scale) (Photo 26)



Appendix 5.27: View of kitchen G5, looking west; note ceiling beam (2m scale) (Photo 150)



Appendix 5.28: View of G6, looking northwest (2m scale) (Photo 140)





**Appendix 5.29:** View of corridor leading to **G6** and **G7** looking west (2m scale) (Photo 138)



**Appendix 5.30:** Detail of exposed masonry in southwest corner of kitchen G5 (Photo 149)





Appendix 5.31: General view of G4, looking northwest (2m scale) (Photo 154)



Appendix 5.32: General view of G4, looking northeast (2m scale) (Photo 155)





Appendix 5.33: General view of G4, looking southeast (2m scale) (Photo 156)



Appendix 5.34: Detail of ceiling joists in G4; note moulded beams (Photo 157)





Appendix 5.35: Detail of former doorway in southwest corner of **G4** (2m scale) (Photo 152)





Appendix 5.36: Detail of cupboard in southwest corner of G4 (2m scale) (Photo 153)





Appendix 5.37: Detail of ceiling beam in G3; note redundant mortices (Photo I47)



Appendix 5.38: Detail of re-used beam in G1 (Photo I36)





Appendix 5.39: Detail of doors in northeast corner of **G3** (2m scale) (Photo 144)





Appendix 5.40: General view of GI looking west (2m scale) (Photo 135)



Appendix 5.41: Detail of staircase in GI looking northeast (2m scale) (Photo 137)





Appendix 5.42: General view of G2 looking southwest (2m scale) (Photo 141)



Appendix 5.43: Detail of G2 looking west (2m scale) (Photo 142)





Appendix 5.44: Blocked external doorway into southeast corner of G2 (2m scale) (Photo 38)





**Appendix 5.45:** Blocked internal doorway into southeast corner of **G2** (2m scale) (Photo 143)





Appendix 5.46: General view of F2, looking southwest (2m scale) (Photo 111)



Appendix 5.47: General view of F2, looking northwest (2m scale) (Photo 112)





Appendix 5.48: General view of F3, looking north (2m scale) (Photo I 10)





**Appendix 5.49:** Detail of ceiling beam in F2; note runout stops (Photo 113)



**Appendix 5.50:** General view of F5, looking northwest (2m scale) (Photo 122)





Appendix 5.51: General view of F5, looking west (2m scale) (Photo 119)





Appendix 5.52: General view of F6, looking southwest (2m scale) (Photo 120)



Appendix 5.53: Detail of fireplace in F6, looking east (1m scale) (Photo 121)





**Appendix 5.54:** General view of staircase FI, looking northwest (2m scale) (Photo 115)





Appendix 5.55: Detail of balustrade of staircase in F1, looking northeast (Photo I16)





Appendix 5.56: General view of blocked window in FI, looking west (2m scale) (Photo I17)



Appendix 5.57: General view of FI I, looking northwest (2m scale) (Photo I23)





**Appendix 5.58:** General view of F10, looking northwest (1m scale) (Photo 124)





Appendix 5.59: General view of F7, looking west (2m scale) (Photo 125)



Appendix 5.60: General view of F7, looking northeast (2m scale) (Photo 129)





Appendix 5.61: Detail of fireplace in F7, looking west (1m scale) (Photo 126)





**Appendix 5.62:** Detail of reveal behind fireplace in F7, looking west (2m scale) (Photo 128)



Appendix 5.63: General view of F8, looking southwest (2m scale) (Photo 130)



Appendix 5.64: General view of F8, looking north (2m scale) (Photo 131)





Appendix 5.65: Detail of fireplace in F8, looking southeast (2m scale) (Photo 132)





Appendix 5.66: Hidden cupboards in F8, looking southwest (1m scale) (Photo 133)



Appendix 5.67: Detail of painting on panelling in east corner of F8 (Photo 134)





Appendix 5.68: View looking down staircase S1 (Photo 118)





Appendix 5.69: General view of S5, looking southwest (2m scale) (Photo I01)



Appendix 5.70: General view of S6, looking northwest (2m scale) (Photo I05)



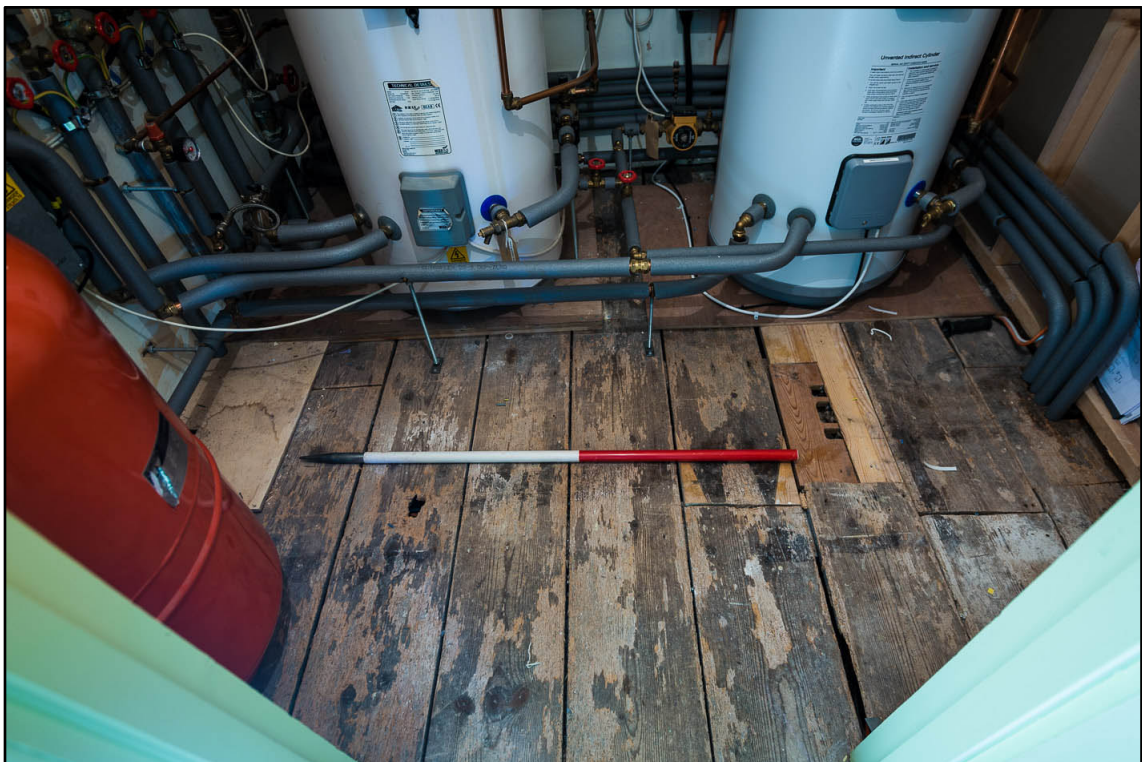


Appendix 5.71: Detail of roof truss in S5 (Photo 102)





Appendix 5.72: General view of S5, looking east (2m scale) (Photo 103)



Appendix 5.73: Detail of floor in boiler room off S5, looking north (1m scale) (Photo 104)





Appendix 5.74: General view of S3, looking north (2m scale) (Photo 108)



Appendix 5.75: General view of S7, looking northeast (2m scale) (Photo 106)



Appendix 5.76: General view of S2, looking southwest (2m scale) (Photo 109)





Appendix 5.77: General view of west elevation of Building 2 (2m scale) (Photo 29)



Appendix 5.78: Detail of ground floor of west elevation of Building 2 showing d22 and I18 (2m scale) (Photo 24)





**Appendix 5.79:** Detail of west doorway into G12 of Building 2 (2m scale) (Photo 21)





Appendix 5.80: Detail of west doorway into B2 of Building 2 (2m scale) (Photo 23)





Appendix 5.81: Detail of west doorway into G9 of Building 2 (2m scale) (Photo 30)





Appendix 5.82: North gable of Building 2, looking southwest (2m scale) (Photo 45)





**Appendix 5.83:** Detail of northeast corner of Building 2; note projecting corbel (Photo 46)



**Appendix 5.84:** East elevation of Building 2, looking northwest (2m scale) (Photo 48)





**Appendix 5.85:** External chimney stack on east elevation of Building 2 (2m scale) (Photo 50)





Appendix 5.86: View of south wall of BI (1m scale) (Photo 90)



Appendix 5.87: View of southwest wall of BI (1m scale) (Photo 89)





Appendix 5.88: View of southeast corner of BI (1m scale) (Photo 91)



Appendix 5.89: General view of BI, northeast (1m scale) (Photo 87)





Appendix 5.90: Detail of doorway into B2, looking west (2 scale) (Photo 86)



Appendix 5.91: Detail looking down steps into B2 (1 m scale) (Photo 92)





Appendix 5.92: General view of south wall of B2 (1m scale) (Photo 94)



Appendix 5.93: General view of north wall of B2 (1m scale) (Photo 93)





Appendix 5.94: View looking northeast of wall in G9 (1m/2m scale) (Photo 71)



Appendix 5.95: Detail of doorway in north wall of G9 (south wall of 12-13<sup>th</sup> century section of Building 2; 1m/2m scale) (Photo 74)





**Appendix 5.96:** Detail of blocked window in south wall of **G9** (2m scale) (Photo 72)





**Appendix 5.97:** Detail of re-used beams in first floor of G9 (Photo 73)



**Appendix 5.98:** Detail of hood moulding above doorway in north wall of G9 (Photo 175)





Appendix 5.99: Detail of moulding on door reveal in south wall of G10 (20cm) (Photo 176)





Appendix 5.100: General view of G10, looking northwest (2m scale) (Photo 75)



Appendix 5.101: General view of G10, looking southwest (2m scale) (Photo 78)





Appendix 5.102: Detail of w18 in west wall of G10 (1m/2m scale) (Photo 82)



Appendix 5.103: View of studwork partition in G10, looking northeast (2m scale) (Photo 83)





Appendix 5.104: Detail of blocked window in southwest corner of G10 (2m scale) (Photo 80)



Appendix 5.105: View looking down to cellar in southwest corner of G10 (1m scale) (Photo 81)





Appendix 5.106: Detail of blocked window (?) in east wall of G10 (2m scale) (Photo 76)



Appendix 5.107: Detail of blocked window (?) in east wall of G10 (2m scale) (Photo 77)





Appendix 5.108: Carpentry mark on timber above doorway in to G10 (5cm scale) (Photo 177)



Appendix 5.109: Detail of change in ceiling boards in G10 (Photo 79)





Appendix 5.II0: Detail of ladder hanger attached to ceiling in G10 (Photo 84)



Appendix 5.II1: Detail of exposed ceiling laths in G11; note hearthstone corbels (Photo 85)





Appendix 5.112: General view of G12, looking east (2m scale) (Photo 95)



Appendix 5.113: General view of G12, looking southwest (2m scale) (Photo 96)





Appendix 5.114: General view of G12, looking west (2m scale) (Photo 97)



Appendix 5.115: General view of G12, looking northwest (2m scale) (Photo 98)





Appendix 5.116: Detail of inserted fireplace in north wall of G12 (2m scale) (Photo 99)

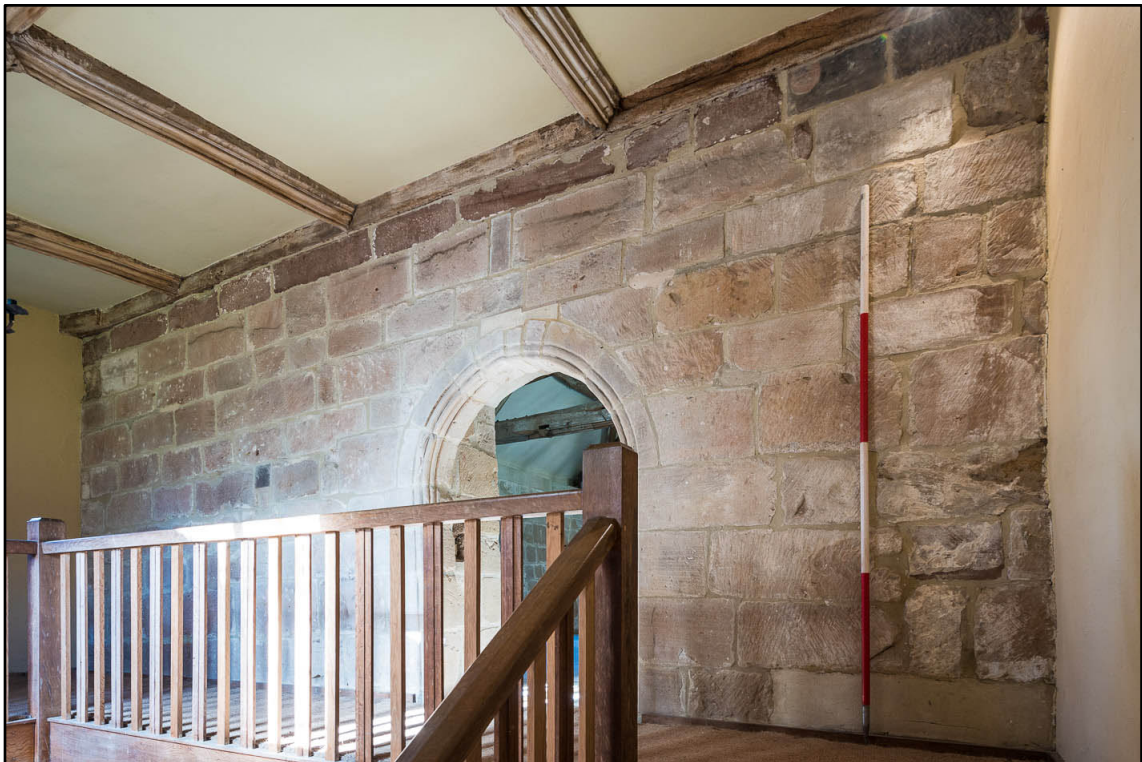


Appendix 5.117: Blocked bread oven in northeast corner of chimney reveal in G12 (Photo 100)





Appendix 5.118: General view of wall in F12, looking northeast (2m scale) (Photo 53)



Appendix 5.119: General view of wall in F12, looking northwest (2m scale) (Photo 51)





Appendix 5.120: Detail of doorway between F12 and F13 (2m scale) (Photo 56)





Appendix 5.121: Detail of doorway between F13 and F12 (1m scale) (Photo 57)





Appendix 5.122: Detail of former door (front) used in F13 (2m scale) (Photo 54)





Appendix 5.123: Detail of former door (rear) used in F13 (2m scale) (Photo 55)





**Appendix 5.124:** Detail of roof trusses in F13, looking north (Photo 60)



**Appendix 5.125:** General view of F13, looking north (2m scale) (Photo 59)





**Appendix 5.126:** Detail of scarf repair on tie beam of roof truss of F13 (Photo 64)



**Appendix 5.127:** General view of roof truss at north end of F13, looking north (Photo 65)





**Appendix 5.128:** General view of F13, looking southeast (2m scale) (Photo 70)



**Appendix 5.129:** General view of south wall in F13 (2m scale) (Photo 61)





Appendix 5.130: Detail of northwest window in F13 (1m/2m scale) (Photo 67)



Appendix 5.131: Detail of northeast window in F13 (1m/2m scale) (Photo 63)





Appendix 5.132: Detail of inserted window in northeast wall of F13 (2m scale) (Photo 69)



Appendix 5.133: Detail of inserted window in southeast wall of F13 (2m scale) (Photo 62)





Appendix 5.134: Detail of d38 in northwest corner of F13 (1m/2m scale) (Photo 68)





**Appendix 5.135:** Detail of fireplace in east wall of F13 (2m scale) (Photo 66)



**Appendix 5.136:** Detail along wallplate at south end of F13 (10cm scale) looking east (Photo 161)





Appendix 5.137: View of upper landing above south end of **F13**, looking southeast (Photo 158)



Appendix 5.138: Detail of re-used ceiling above **F12**, looking west (Photo 52)





**Appendix 5.139:** Detail of end of tiebeam in **F13**; note mortise for post (**Photo 163**)



**Appendix 5.140:** Detail of re-used tiebeam in **F13**; note empty holes (10cm scale) (**Photo 162**)





**Appendix 5.141:** Detail of re-used purlin in southeast roof section in F13 (Photo 159)



**Appendix 5.142:** Detail of re-used purlin in southeast roof section in F13 (5cm scale) (Photo 160)



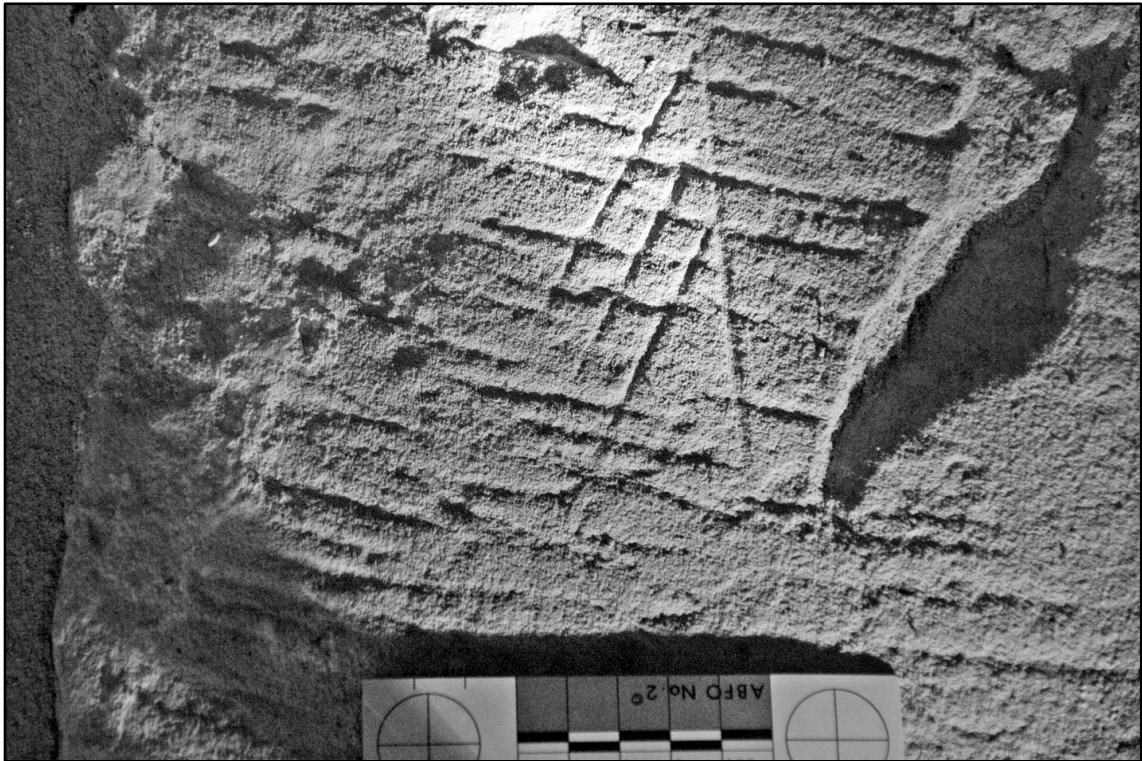


**Appendix 5.143:** Mason's mark on external arch of doorway in F12 (5cm scale) (Photo 173)



**Appendix 5.144:** Mason's mark on external arch of doorway in F12 (5cm scale) (Photo 174)





Appendix 5.145: Mason's mark on west wall of F13 (5cm scale) (Photo 164)



Appendix 5.146: Mason's mark on west wall of F13 (5cm scale) (Photo 165)





Appendix 5.147: Mason's mark on north wall F13 (5cm scale) (Photo 166)

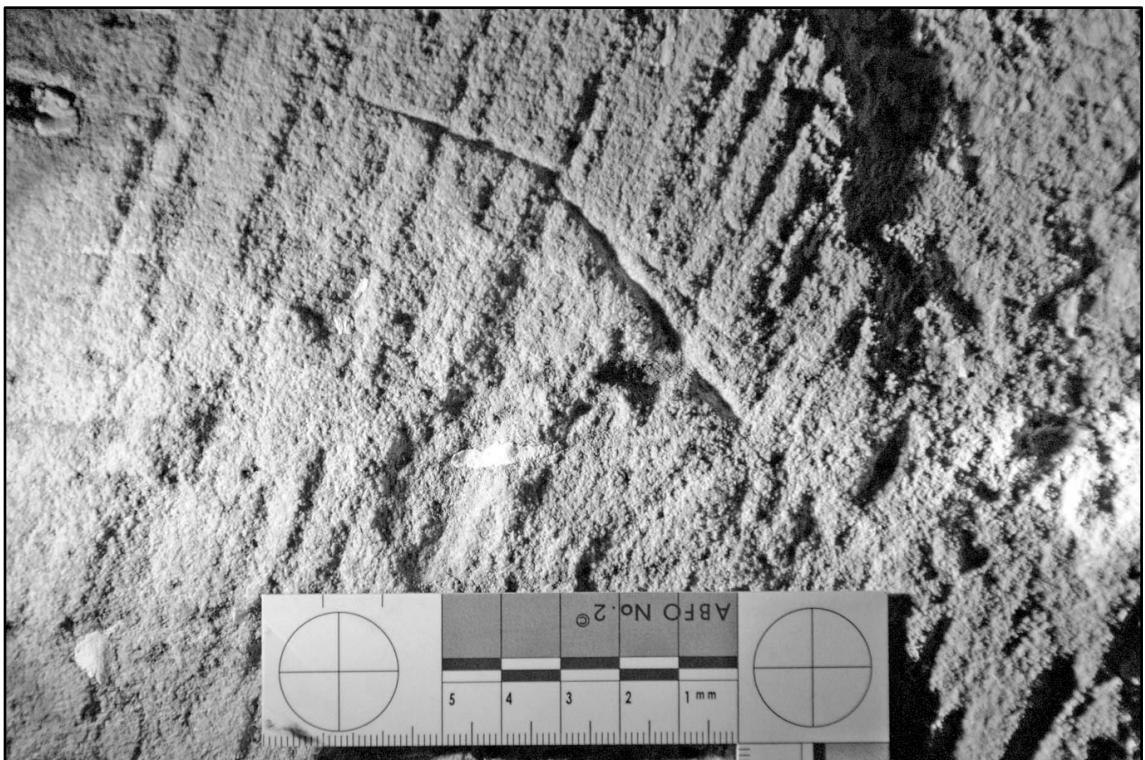


Appendix 5.148: Mason's mark on south wall of F13 (5cm scale) (Photo 167)



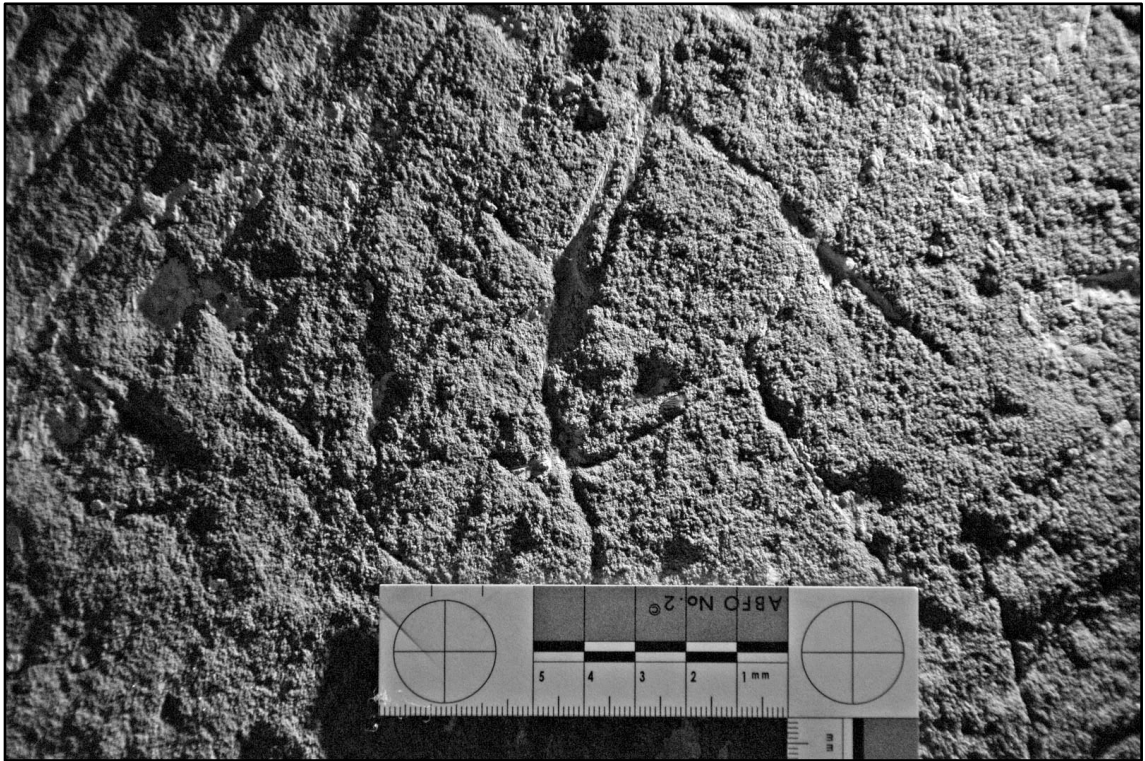


Appendix 5.149: Mason's mark on south wall of F13 (5cm scale) (Photo 168)

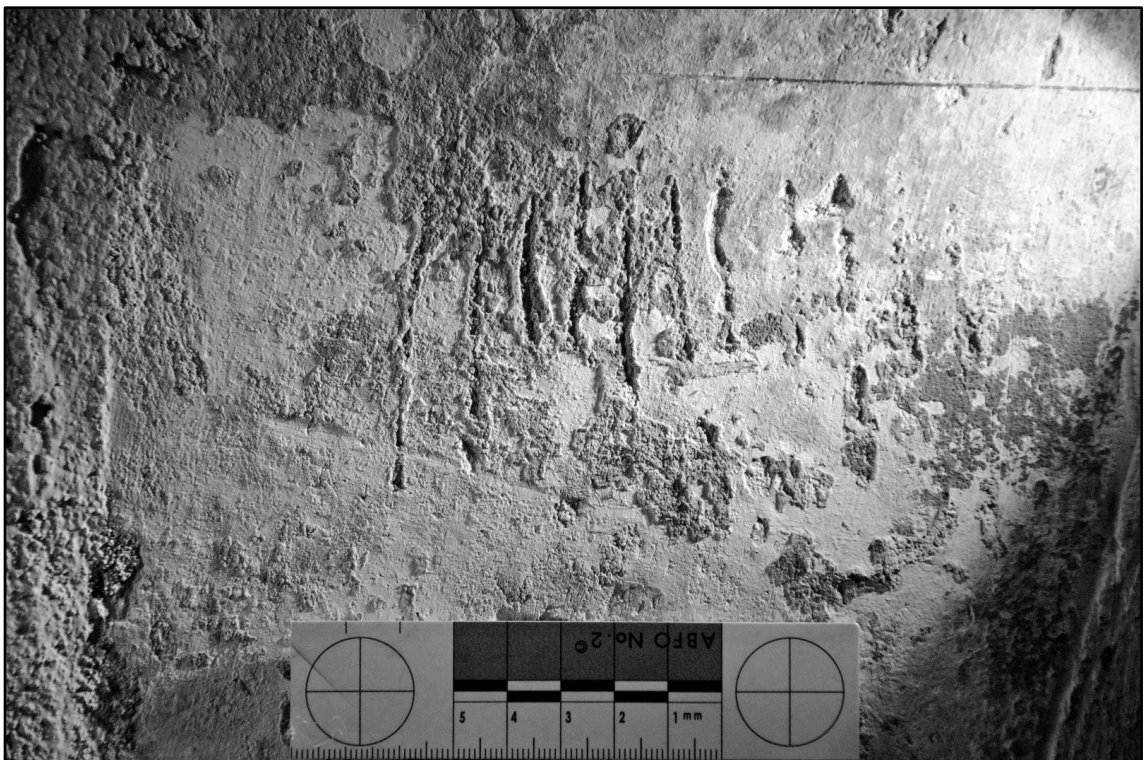


Appendix 5.150: Mason's mark on west wall of F13 (5cm scale) (Photo 170)





Appendix 5.51: Mason's mark on south wall of F13 (5cm scale) (Photo 171)



Appendix 5.152: Detail of vertical 'tally marks' in southwest window reveal in F13 (5cm scale)  
(Photo 172)