



NORTHLIGHT HERITAGE	11 Station Road
REPORT: 197	Archaeological Excavation
PROJECT ID: 1131	
DATA STRUCTURE REPORT	Stirling, FK8 2BY

NORTHLIGHT HERITAGE

Northlight Heritage

Studio 114 | South Block | 64 Osborne Street | Glasgow | G1 5QH

web: www.northlight-heritage.co.uk | tel: 0845 901 1142

email: northlight@yorkat.co.uk

11 Station Road, Stirling FK8 2BY

NGR: NS 79715, 93575

Planning ref: 15/00672/CON

Data Structure Report

on behalf of

Gillian Leathley-Gibb

Cover Plate: Excavation within Trench 1

Report by: Steven Black and Stephen Digney

Illustrations by: David Sneddon

Edited by: David Sneddon

Surveyed by: Peta Glew

Director: Steven Black

Project Management: David Sneddon

Excavation Team: Steven Black, Dawn Ferry, Stephen Digney, Jack Portwood, Clare Graham

Approved by:



Date: 28/09/2017

This Report has been prepared solely for the person/party which commissioned it and for the specifically titled project or named part thereof referred to in the Report. The Report should not be relied upon or used for any other project by the commissioning person/party without first obtaining independent verification as to its suitability for such other project, and obtaining the prior written approval of York Archaeological Trust for Excavation and Research Limited ("YAT") (trading as Northlight Heritage). YAT accepts no responsibility or liability for the consequences of this Report being relied upon or used for any purpose other than the purpose for which it was specifically commissioned. Nobody is entitled to rely upon this Report other than the person/party which commissioned it. YAT accepts no responsibility or liability for any use of or reliance upon this Report by anybody other than the commissioning person/party.

**NORTHLIGHT
HERITAGE**

CONTENTS		
	Abstract	5
1	Introduction	5
2	Location, Geology and Topography	5
3	Archaeological and Historical Context	6
4	Summary Objectives	6
5	Methodology	7
6	Results	8
7	Discussion and Summary	14
8	Recommendations	15
9	Sources	15
10	Appendices	17
	Appendix 1: Tables / Concordances	17
	Appendix 2: Written Scheme of Investigation	40
	Appendix 3: DES entry	48
FIGURES		
1	Site Location	4
2	Trench Plan: Post-excavation	9
3	North-east and south-west facing sections of Trench 1	12
PLATES		
1	Brick chamber [008]	10
2	Ditches [025 & 039] with backfill of previous excavations to the right	11
3	Cut of ditch [025] curving to the south (left = from the SW, right = from the E)	13
TABLES		
1	Context Information	17
2	Drawings	18
3	Finds	18
4	Photographs	24
5	Samples	37

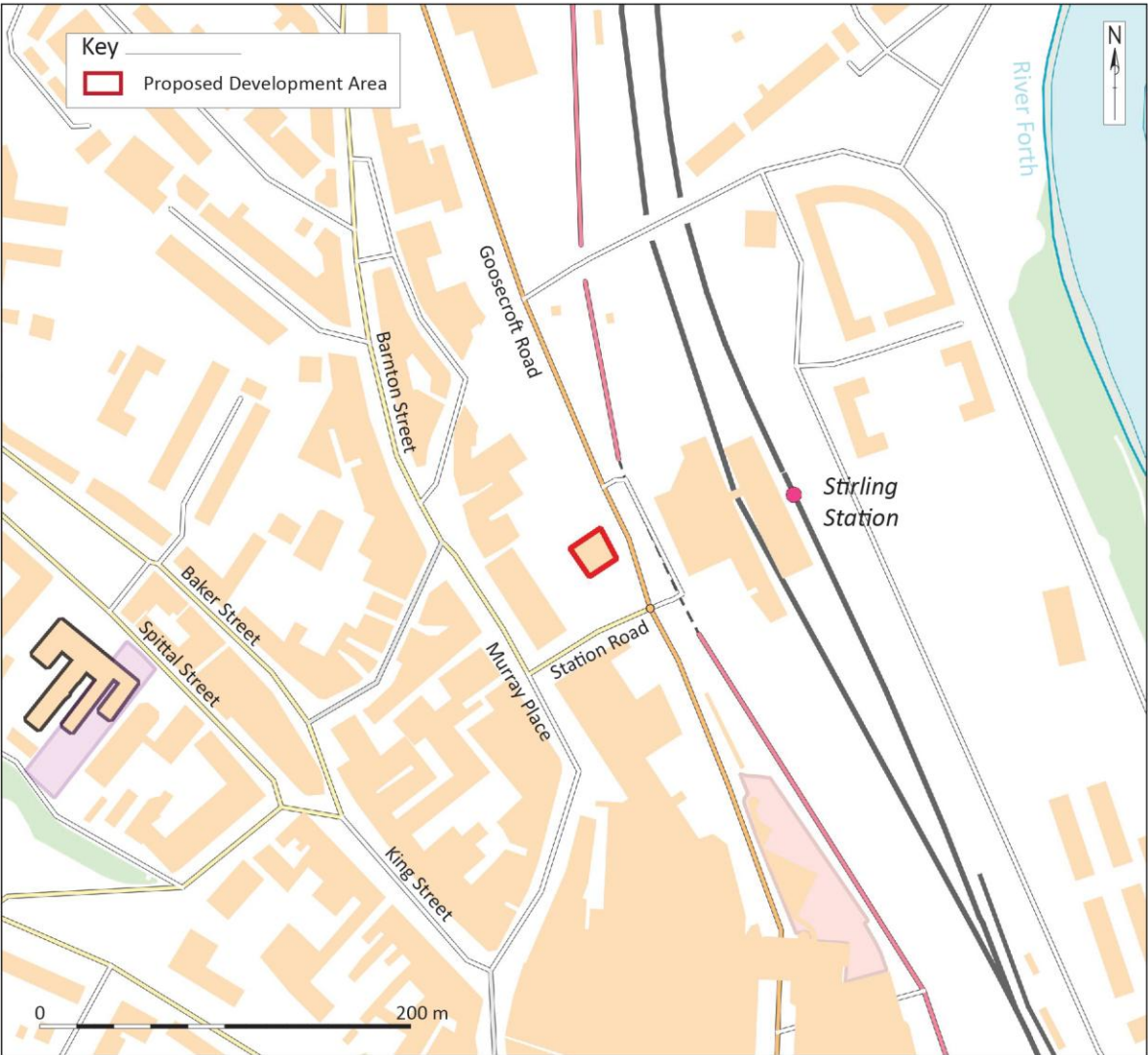
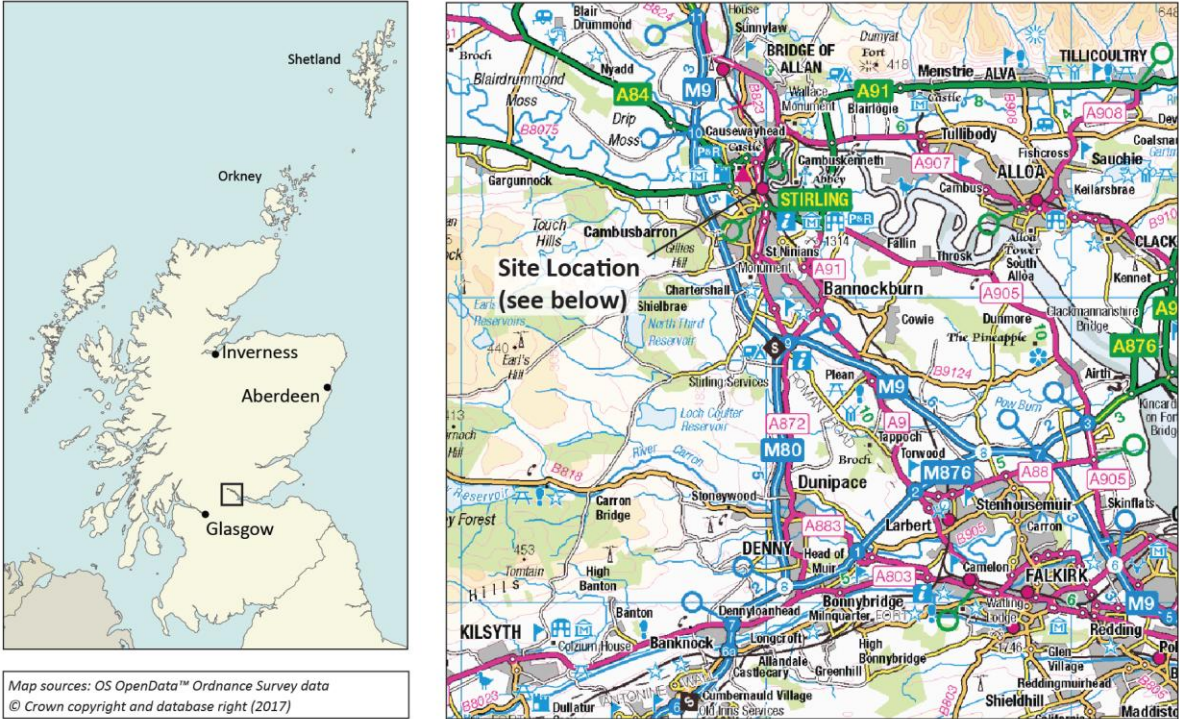


Figure 1: Site Location

Abstract

An archaeological excavation was undertaken at 11 Station Road, Stirling on behalf of Gillian Leathley-Gibb in relation to the proposed development of a site which currently sits derelict. The work was conducted by Northlight Heritage between 3rd July and 29th August 2017. The excavation followed on from a previous unfinished phase of strip, map and sample excavation undertaken in 2016 which uncovered a large linear ditch, running in a broadly north-east to south-west direction. The current phase of works continued excavation of the previously identified ditch whilst also investigating the remainder of the development area. This showed that there were up to three ditches present in the southern part of the development area, all running broadly north-east to south-west although two showed signs of curving to the south. A variety of material culture was recovered including pottery, dressed stone, metal and animal bone which tentatively identified the ditches as late medieval and/or early post-medieval in date. No archaeological features were recovered from the northern part of the development area.

1. Introduction

1.1

This report presents the results of an archaeological excavation conducted by Northlight Heritage at 11 Station Road, Stirling, on behalf of Gillian Leathley-Gibb. The work was conducted between 3rd July and 29th August 2017 in order to meet archaeological conditions placed on planning application 15/00672/CON and followed on from earlier partial archaeological investigation of the site in 2016.

Project background

1.2

The proposed development of the site at 11 Station comprises a new building set on piled foundations. The initial phase of the development involved the demolition of a shop which once stood on the site. Subsequent to this an archaeological evaluation and subsequent partial strip, map and sample excavation was undertaken on the site (unknown 2016 & McNicol 2016). This identified deposits likely dating to the medieval and post-medieval periods while a large linear ditch, up to 7 m in width and running north-east to south-west, was uncovered in the south-eastern corner of the site. Given the large size of the ditch it was interpreted as a defensive or boundary ditch possibly dating to the medieval or early post-medieval periods.

1.3

The 2016 archaeological work was not completed and there remained an archaeological planning condition on the site. During 2017 Northlight Heritage were commissioned by Gillian Leathley-Gibb to complete the archaeological investigation of the site. This work is reported on here.

2. Location, Geology and Topography

2.1

The development area at 11 Station Road, Stirling is located opposite the main entrance of Stirling Railway Station and is situated on the corner of Station Road and Goosecroft Road (Figure 1). The gardens of the properties fronting onto Murray Place form the boundary on the south-western side while a small lane providing access to Murray place lies immediately to the north-west. The site is broadly square in shape, amounts to approximately 390 sq. m, is centred on NGR NS 79715, 93575 and is currently derelict waste ground.

2.2

The solid geology consists of an igneous quartz-microgabbro (Midland Valley Sill Complex) and, although no

superficial deposits are recorded directly on the site, it sits on the edge of raised tidal flat deposits of silt and clay (British Geological Survey online 1:50000 data).

3. Archaeological and Historical Context

3.1

The development site at Station Road is located in the immediate vicinity of a former Dominican friary, the exact extent and layout of which is currently unknown. Historical sources note that the 13th century friary was demolished during the reformation of 1559 (Page & Page 1996). The supposed site of the friary is shown on the 1858 Ordnance Survey (OS) Town Plan of Stirling to the rear of 80-82 Murray Place while reappraisal of excavations undertaken in the early twentieth century and additional excavation undertaken in the 1990s have uncovered remains of what is believed to be the church walls within the gardens to the rear of 60-68 Murray Place (Ronald 1904, Page & Page 1994). Both articulated and disarticulated skeletal remains have been reported in the gardens of 60-68 Murray Place which may correspond to a graveyard associated with the friary while a stone drain, sump and possible medieval cobbled surface have been located at 3 Station Road.

3.2

The 1858 OS Town Plan of Stirling shows a well within the development area in the grounds of the former Queens Bank at the corner of Station Road and Murray Place. Other reports of wells have been reported in the basement of 16 Murray Place.

3.3

The same map shows the development area to be part of relatively formal gardens at the rear of 60-68 Murray Place. On both the 1913 and 1947 OS 25 inch to the mile maps a small building appears to be present in the western corner of the development area.

3.4

As noted previously the development area had been subject to previous evaluation and partial excavation works in 2016 (unknown 2016 & McNicol 2016). These archaeological works revealed possible medieval and post-medieval garden soils, peaty deposits and a large ditch running north-east to south-west across the southern half of the site. The ditch was up to 4.7 m in width, 1.25 m in depth and contained multiple fills. Artefacts recovered included medieval and post-medieval pottery, animal bone and oyster shell.

3.5

Archaeological evaluation and subsequent excavation in 2015 at Station Square, located immediately north-west of the development area, revealed structural remains and deposits likely relating to the friary and general medieval activity within Stirling (Will 2015).

4. Summary Objectives

The objectives of the excavation were:

- to excavate and record archaeological trenches across the previously identified ditch concentrating on the proposed pile locations;
- to establish the presence or absence of any archaeological remains which may be present on the site concentrating on each of the remaining pile locations;

- to determine the character, extent and significance of any archaeological deposits encountered;
- outwith the location of the ditch, where ditch fills within the trenches will be fully excavated, and where preservation *in-situ* is not feasible, provide sufficient information to develop a stage 2 mitigation strategy to excavate and record any significant archaeological features or sites encountered to ensure preservation through record.

5. Methodology

5.1

The use of piled foundations as part of the proposed development resulted in individual pile locations and areas immediately around them being the most likely parts of the site where impacts could occur on buried archaeology during construction. A series of archaeological trenches were proposed to investigate the ditch feature previously uncovered in 2016 and the remaining pile locations, or as close to their locations as was possible while maintaining a safe distance from the site boundary and adjacent pedestrian areas (see appendix 2).

5.2

Due to issues with large quantities of groundwater, the presence of concrete obstructions and health and safety concerns over deep excavations in close proximity to the site boundary the trench layout was altered from that described in Appendix 2. After discussion with Stirling Council Archaeology Service a new trench layout was agreed that equated to the same total overall area that would have been investigated by the initial trench layout (108 sq. m). The final area that was excavated equated to 116 sq. m.

Trench over ditch (southern area)

5.3

One large trench was excavated across the suspected line of the ditch (Trench 1, Figure 2). The trench was orientated north-west to south-east, measured up to 12.8 m by 6.0 m (Figure 2) and was up to approximately 3 m in depth. Its location was limited on the north-eastern side by the previous 2016 excavation trench and on the south-western side by a brick chamber along with the associated disturbance this feature had caused.

5.4

Due to the depth of the trench a combination of a 1 m step every 1 m in depth and, where appropriate, battered trench edges at 45 degree angle were employed to stabilise the trench sides. This was particularly necessary due to the constant influx of groundwater which destabilised the trench sides.

5.5

The modern layers within the trench were excavated in spits by mechanical excavator, using a toothless ditching bucket under direct archaeological instruction and supervision. All significant archaeological features and layers lying below these were fully excavated by hand although careful machine excavation was also utilised where appropriate.

Trenches over northern area

5.6

Two trenches were opened over the northern part of the site (Trench 2 & 3, Figure 2). Trench 2 was orientated south-west to north-east, measured 15 m by 3 m and was up to 1.50 m in depth. Trench 3 was opened in the north-eastern corner of the site and was orientated north-west to south-east, measured 4 m by 3 m and was up

to 1 m in depth.

5.7

As with Trench 1 the sides of Trench 2 and 3 had to be stepped to stabilise the trench sides. Given the limited space available and the drier conditions on this side of the site the northern and southern sides were stepped by 0.50 m on either side. The trench was also excavated in three separate sections which allowing for the eastern and western ends to also be stepped.

5.8

All deposits were removed in controlled spits by mechanical excavator, using a toothless ditching bucket under direct archaeological supervision.

General Excavation & Recording

5.9

The written record of all archaeological features, deposits and finds were by means of conventional *pro forma* sheets. Scaled hand-drawn plans were made at 1:20 and sections at 1:10. High resolution digital images were taken. By the close of the work the locations and dimensions of all trenches will be recorded in such a way as to tie them accurately to the OS grid.

5.11

All archaeological finds were dealt with by the on-site archaeologists. The general practice was to bulk recover artefacts by context although where significant finds were encountered there was a requirement for three-dimensional recording prior to up-lifting.

5.12

Archaeologically significant feature fills and deposits were sampled for artefactual and palaeo-environmental evidence when deemed necessary. Where well preserved and significant waterlogged deposits were present a series of monolith soil samples were taken with kubiena tins to allow future soil micromorphology and pollen analysis to be undertaken if required.

6. Results

6.1

The results of the excavation are given below. In the following paragraphs numbers in round brackets indicate unique context numbers issued to deposits during fieldwork while square brackets indicate structures or cuts of negative features. On the accompanying figures bold numbers indicate cuts of negative features or cuts while regular numbers indicate unique context numbers issued to deposits.

Trench 1

6.2

Trench 1 was opened up directly south-west of the 2016 trench and measured up to 12.8 m by 6 m in size (Figure 2). Beneath approximately 0.25 m of dark brown silty sand topsoil (001) and general modern demolition building debris was a layer of crushed brick/red blaes (002) that existed to approximately 0.15 m in depth. This deposit was most likely spread across site as a levelling layer for the previous and now demolished building's concrete floor.

6.3

The upper demolition layer (001) and levelling layer (002) was removed over the entire southern part of the proposed development area. This revealed, immediately south-west of Trench 1, an open topped red brick chamber [008] along with three large concrete pads [027, 028 & 038]. All of the concrete blocks were approximately 2 sq. m in size and 0.30 m deep while structure [008] measured 1.83 m in length, 1.26 m in width and was 0.70 m deep (Plate 1). The brick chamber was constructed from a double skin of unfrogged red bricks, eight courses deep and bonded with mortar. It sat upon three large sandstone slabs while the base was also encased in a clay deposit (031). This clay spread to the east for approximately 0.80 m and was up to 0.25 m deep. The chamber was filled by a brown water logged silt deposit (009) containing small to large inclusions of brick, slate and dressed stone. Due to the vast amount of water which emanated from below the sandstone slabs the feature was not investigated further.

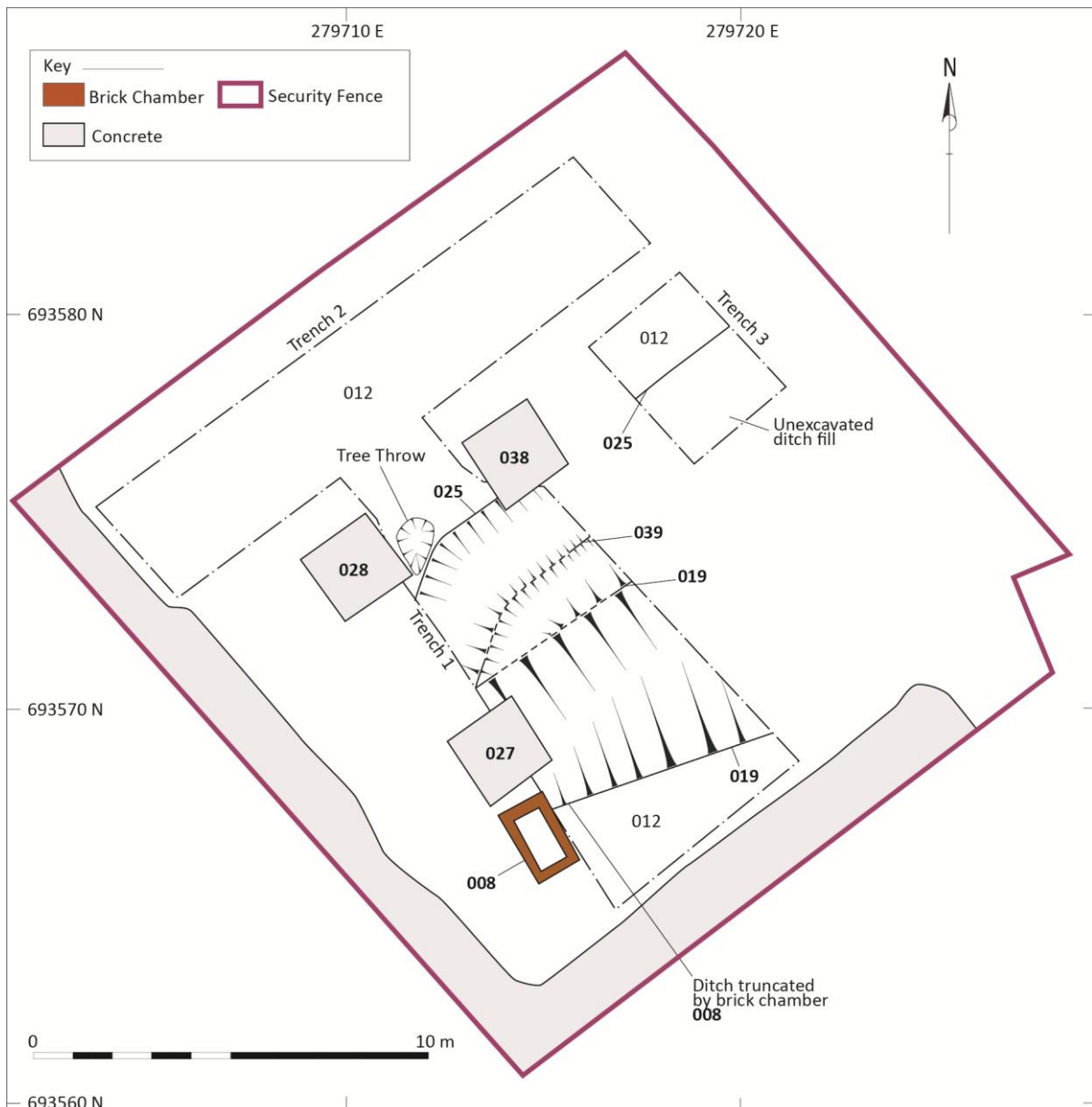


Figure 2: Trench Plan: Post-excitation

6.4

Brick and sandstone structure [008] sat within a steep sided cut [013] measuring approximately 1.80 m north to south where it extended beneath concrete pad [028]. The cut truncated upper deposits (003, 004, 005, 016 & 018) along with feature [036]. The cut started shallow on the northern side before dropping sharply to a flat

base while the southern side was uneven but relatively steep (Figure 3). It was filled by moderately compact dark brown silt (014) with large stone inclusions, brick fragments and patches of re-deposited clay.

6.5

Although the purpose and full extent of this feature is not known the large quantity of water which came from beneath the sandstone slabs and the fact that the slabs could be sealing an opening suggests the feature could relate to or be very close to the well noted on the Ordnance Survey town plan of 1858.

6.6

At the base of [013] a small gravel drain [024] was present (Figure 3). It existed to 0.40 m in width by 0.15 m in depth and ran in a north-east to south-west direction. It was filled by a loosely compact orange brown sandy silt and gravel (015) which appeared to be partially truncated by cut [013] above.



Plate 1: Brick chamber [008]

6.7

To the north of [013], and beneath deposit (002), lay two similar deposits (003 & 004). Deposit (003) comprised approximately 0.30 m of firmly compact black/grey clay which contained assorted finds including glass, pottery, bone and leather. A similar deposit (016) also lay to the south of [013]. Deposit (004) was also black/grey clay, 0.20 m in depth, which contained bone, pottery and wood. The horizon between deposits (003 & 004) was fairly diffuse and they likely represent later accumulations of material.

6.8

Beneath deposit (004) was a 0.50 m thick deposit of very firmly packed clay with abundant large rock and stone inclusions (005). A large proportion of the stone comprised sandstone, some of which had been worked or roughly chiselled indicating that it could represent demolition material from a nearby building. As well as an abundance of stone this layer contained a variety of artefacts including bone, pottery, glass, oyster shell and mortar. Two small finds were recovered from this layer: a small lead musket ball (SF1) and a scabbard chape (SF2). A similar deposit (018) also lay to the south of [013] which was in turn cut by a possible linear feature [036]. The linear feature had steep sides, a relatively flat base (Figure 3) and was filled by a single deposit comprising firmly compact grey clay with dense concentration of small, angular stones and some wood (017).

6.9

During previous investigations this layer (005) was interpreted as being the upper fill of a ditch (McNicol, 2016)

however, the excavation of Trench 1, reported on here, suggests this layer could be a levelling deposit covering ditches [019 & 025]. This layer was, however, only visible in the north-eastern facing section (Figure 3) where (005) was deepest and most stony above ditch [019].



Plate 2: Ditches [025 & 039] with backfill of previous excavations to the right

6.10

A total of three intercutting ditches were present within Trench 1. The latest of these [019] ran in a south-west to north-east direction (Figure 2) and corresponded to the ditch excavated during the previous phase of work (McNicol, 2016). It measured approximately 4.20 m in width and existed to a depth of 1.15 m. It had steeply sloping sides, particularly to the south, down to a gradual break of slope which led on to a relatively flat base that sloped slightly from the north-west to south-east (Figure 3). It had been cut into a natural blue/grey clay (012), possible garden soil (006) and, in the south-western corner of the trench, a firmly compact brown clay, rich in organics and containing occasional stone, oyster shell, animal bone, and pottery (026). Ditch [019] had truncated ditch [025] in the north-eastern facing section (Figure 3) while, in the south-western facing section, it truncated ditch [039], presuming the previous excavation had removed the fills of ditch [019] only. The very waterlogged conditions made it difficult to clearly define the base of ditch [019].

6.11

Ditch [019] contained four fills (010, 007, 011 & 022). The upper fill (010) existed to 2.3 m in width where excavated and to a depth of 0.20 m. It comprised firmly compact brownish grey re-deposited clay silt which contained animal bone, pottery and oyster shells. Beneath this lay (007) which comprised a similar firmly compact grey silty clay deposit which covered the entire width of the ditch (Figure 3) and existed to between 0.2 m and 0.4 m in depth. Unlike deposit (010) above this deposit also contained occasional stone inclusions along with frequent charcoal flecks, coal, pottery, bone and oyster shell. Beneath (007) lay what appeared to be a tipped deposit of stone and boulders in a clay matrix (011). Similar to deposit (005) much of the stone appeared to have been worked, some having chisel marks, while parts of possible roof slates were also present. This deposit appears to be demolition material that was tipped in to the ditch from the northern side. Where excavated it existed to 1.30 m in width and was, on average, 0.40 m in depth. Artefacts recovered included animal bone and pottery.

6.12

Recording of the primary ditch fill (022) was problematic due to constant water logging in the base of the trench. However, (022) appeared to comprise firmly compact brown/grey clay with occasional charcoal flecks and small stone inclusions. It measured approximately 3.00 m in width and 0.40 m in depth. Similar to other deposits in the southern part of the trench the clay nature of many contexts and substantial water ingress resulted in the precise extent and boundary of some deposits not always being easily identifiable.

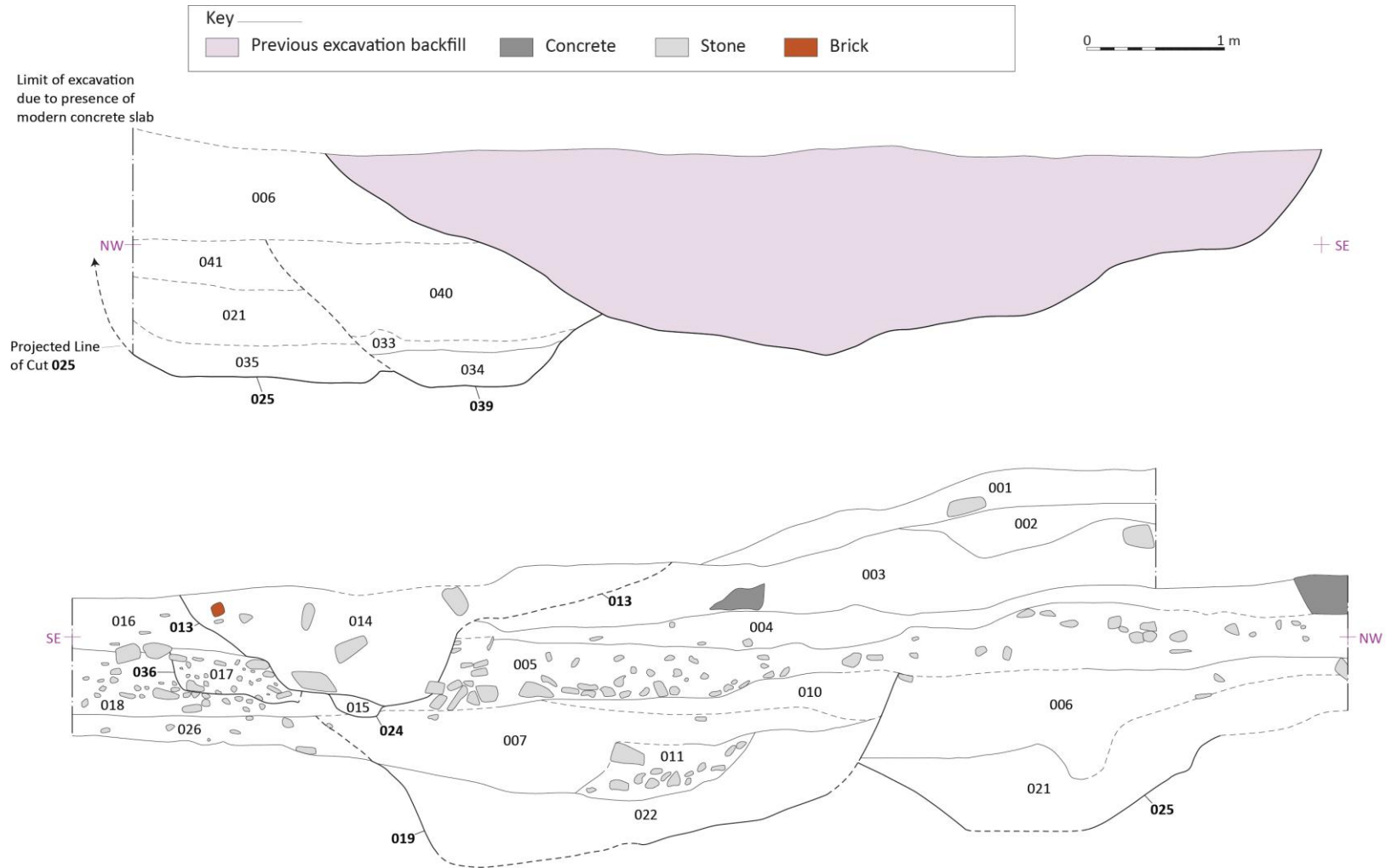


Figure 3: North-east and south-west facing sections of Trench 1

6.13

The middle of the three ditches [039] was only visible on the south-west facing section of trench 1 (Figure 3) having been completely truncated by ditch [019] along the south-western edge of the trench (Figure 2 & 3, Plate 2). The northern side of the cut was difficult to define due to the similarity of deposits immediately within and outwith the cut on this side. Where visible the sides were moderately steep and slightly concave with the exception of a small part on the upper part of the southern side which was more shallow (Figure 3). It existed to 2 m in width, was up to 1.05 m in depth and had a relatively flat base.

6.14

Ditch [039] contained three fills (033, 034 & 040). The upper fill (040) comprised firmly compact greenish grey clay, occasional charcoal flecks, small stones, animal bone, pottery and iron nails. Beneath this lay a narrow band of likely re-deposited natural clay (033) which was blue/grey in colour with no inclusions. It existed to approximately 1.50 m in length by 0.10 m in depth. A firmly compact brown clay rich layer (034) formed the primary fill of [039]. Within the clay was an abundant mix of extremely well preserved grass like organic material and wood along with some animal bone.

6.15

The earliest of the three ditches [025] lay on the north-western side of the three. It had been truncated by ditch [039] on its south-eastern side and, similar to ditch [039], contained three fills (035, 021 & 041). In plan it distinctly curved to the south along its northern edge (Figure 2, Plate 3). Where excavated the ditch existed to 2.75 m in width and was up to 1.35 m deep. A large concrete slab prevented full exploration of the cut in the northern corner but the remainder of the north-western side appeared to have relatively steep and slightly concave sides on to a flat base. Only the bottom portion of the cut was visible on the south-eastern side due to its truncation by [039]. A small tree throw was located to the north of ditch [025] (Figure 2).



Plate 3: Cut of ditch [025] curving to the south (left = from the SW, right = from the E)

6.16

The upper fill of the north-eastern part of ditch [025] comprised grey brown clay containing occasional charcoal flecks (041). It existed to 1.30 m in width and up to 0.30 m in depth. Beneath this lay firmly compact brown clay containing organic material, oyster shell, pottery and bone inclusions (021). Where excavated it existed to 2.7 m in width and 0.4 m in depth. In the north-east facing section (021) was the only fill present within the ditch (Figure 3). The primary fill of the north-eastern part of the ditch (035) was similar in nature to (034) within ditch [039] and comprised very organic rich brown clay containing grass like organic material and wood along with some animal bone. The basal fill measured up to 1.9 m in width by 0.25 m deep where excavated.

6.17

Above ditch [039 & 025] lay a dark green/grey silty clay (006) which contained an abundance of finds including animal bone, pottery, oyster shell, coal and a gold ring (SF#3).

Trench 2

6.18

Trench 2 measured 15 m north-east to south-west by 3 m in width and was excavated along the northern boundary of the site (Figure 2). As with Trench 1 the upper deposits all related to recent demolition or levelling events. Beneath 0.25 m of crushed brick/red blaes deposit (002) was a small patch of firmly compact black/grey clay (003) which existed to approximately 0.15 m in depth. This lay above a similar black/grey clay (004) which existed to 0.22 m in depth. Beneath deposit (004) the layer of stone and demolition material (005) was present to approximately 0.25 m in depth which, similar to Trench 1, contained worked stone throughout. Beneath this stony deposit lay a dark greenish/grey silty clay (006) interpreted as a possible garden soil. This deposit lay directly on top of the blue/grey clay natural subsoil (012). No archaeological features were uncovered within Trench 2.

Trench 3

6.19

A third trench was excavated by mechanical excavator to the north-east of Trench 1 in order to determine whether the cut of ditch [025] continued in this direction. Deposits that lay above the ditch reflected those uncovered within Trench 1 and, although not fully excavated, it was clear that the north-western edge of [025] continued in this direction (Figure 2).

7. Discussion and Summary

7.1

The work undertaken at Station Road, reported on above, revealed and investigated three relatively large ditches [019, 025 & 039] which ran in a broadly north-east to south-west direction, although the two earlier ditches [025 & 039] appeared to curve round to the south. The northern edge of the earliest ditch [025] curved to the south in the south-western part of Trench 1 and, although it was not clearly defined in either section or in plan, it was presumed that ditch [039] also curved to the south following a similar alignment to [025] (Figure 2). This was primarily due to its complete absence from the north-eastern facing section (Figure 3).

7.2

Both earlier ditches [025 & 039] were cut by a single later ditch [019] which exhibited different characteristics compared to the earlier two. It appeared wider and contained fills darker in colour than those within [025 & 039] which predominately contained lighter clays with less stone. One of the fills from [019] contained numerous fragments of worked stone and roof slate (011) which wasn't present in any of the [025 & 039] fills.

7.3

The finds recovered from all three ditches could indicate they have their origins in the late medieval and/or early post-medieval periods although assigning a function and date of use to any of the ditches at this stage is difficult. However, several potential relationships do exist including some or all of the ditches being associated with the nearby 13th to 16th century Blackfriars Church (Page & Page 1994 & 1996), some other form of boundary ditch or the town's trench and sluice defences constructed in 1650 (Ronald 1899: 223-225).

7.4

Context (011) within ditch [019] and (005), which overlay [019 & 025], contained worked sandstone, masonry fragments, mortar, slates and shale along with general midden material. This could be indicative of rapid infilling of the ditch or levelling of the ground using a nearby source of demolition material. The fine grained sandstone, which was bluish grey to dark blue in colour when wet, was very consistent and could be Ballengeich stone. This sandstone was also identified within the likely southern wall of the Blackfriars Church when revealed in the early twentieth century (Ronald 1904). Ballengeich stone was well known to 19th century masons in Stirling, and is from a lost medieval quarry near the castle (Ronald 1899: 17-18).

7.5

It is important to note that Trench 1 experienced extreme water ingress for the duration of the project which, combined with the clay nature of most deposits that were encountered, resulted in the boundary between many of the contexts not being easily identifiable until seen in section. Even then the boundary between similar clay deposits was not always obvious. For this reason the artefacts recovered should be perceived as assemblages from each ditch rather than being reliably from specific contexts.

8. Recommendations

8.1

The results of the excavation presented above show that three archaeologically significant ditches were present within the development area. Although no other significant archaeological remains were uncovered within the remainder of the development area small parts of unexcavated ditch material are still present. There also exists the possibility that other archaeological remains are present within parts of the site not investigated during either this phase of works or that undertaken in 2016. The on-site areas where this potential exists are, however, relatively small.

8.2

It is recommended that a phase of Stage 3 post excavation analysis and publication be undertaken in order to fully understand and disseminate the results of the archaeological work from both this phase and that undertaken in 2016. It is recommended this post excavation work be specified in a *post- excavation research design (PERD)* to be agreed with Stirling Council Archaeology Service prior to the commencement of any further work.

8.3

It is also recommended that an archaeological watching brief be maintained during future ground disturbance which are most likely to occur during ground investigation, preparation or construction phases of the development.

8.4

Northlight Heritage would stress that these recommendations are intended for guidance only. A final decision on the requirement for archaeological mitigation rests with the planning authority.

9. List of Sources

British Geological Survey Geology of Britain Viewer:

<http://www.bgs.ac.uk/discoveringGeology/geologyOfBritain/viewer.html> (Last accessed 12th September 2017).

Ordnance Survey, *Town Plan of Stirling*, 1:500, Sheet XVII.3.10, 1858.

Page, R and Page, C 1994, *64 Murray Place (Stirling parish): Blackfriars Church*, *Discovery Excav Scot*, 1994, P11.

Page, R and Page, C 1996 'Blackfriars of Stirling', *Proc.Soc.Antiq.Scot*. 126: 881-898.

Ronald, J. 1899 *Landmarks of Old Stirling*, Enaes MacKay, Stirling.

Ronald, J. 1904 'On finding part of an old wall in Murray Place', in *Transactions of the Stirling Natural History and Archaeological Society* Vol. 26: 126-130.

Will, R 2015, *Station Square, Stirling: Archaeological Watching Brief & Excavation*, Unpublished Data Structure Report, GUARD project 3884.

McNicol, D 2016, *11 Station Road, Stirling: Archaeological Strip, Map and Record*, Unpublished Data Structure Report, GUARD Archaeology Ltd., project 4480.

Unknown 2016, *11 Station Road, Stirling: Archaeological Strip, Map and Record*, Unpublished Data Structure Report, GUARD Archaeology Ltd., project 4259.

10. Appendices

APPENDIX 1: Tables / Concordances

Table 1: Context Information

<i>Context No.</i>	<i>Trench</i>	<i>Type</i>	<i>Length (m)</i>	<i>Depth (m)</i>	<i>Width (m)</i>	<i>Description/Interpretation</i>	<i>Stratigraphy and/or phasing info</i>
001	1	Deposit	2.20m	0.26m	unknown	Loose, sandy topsoil of the site packed with boulders, stones and brick debris.	Grey/black topsoil covering the site.
002	1	Deposit/Fill	2.20m	0.15m	unknown	A loose mid red to orange layer filled with fragmented and crushed bricks/red blaes. Modern levelling deposit from construction of previous building.	Modern levelling deposit beneath (001).
003	1	Deposit	7.80m	0.30m	unknown	A tightly and firmly packed upper deposit of black/grey clay like soil filled with large boulders, smaller rocks, bone, glass, pottery and leather.	Post medieval garden soil deposit.
004	1	Deposit	5.60m	0.20m	unknown	Firmly packed, dark brown clay filled with stones, pot, wood and animal bone. An interface layer between upper deposit (003) and lower levelling deposit (005).	Post medieval garden soil/midden deposit.
005	1	Deposit/Fill	7.8m	0.5m	unknown	A firm black/grey soil packed with large rocks and boulders. Bone, pottery, glass, shell, mortar. There was worked sandstone and slate. A possible levelling deposit over the ditch.	Levelling deposit capping ditches.
006	1	Deposit/Fill	2.00m	0.7m	unknown	A dark grey silty layer, filled with pot, bone and oyster shell. Possible garden soil.	Above ditches [025 & 039], above (021 & 041) and cut by (019).
007	1	Fill	unknown	0.4m	4m	Firmly compact grey silty clay with occasional inclusions of stone, coal, oyster shell, bone and pot. An upper fill of ditch [019]. Same as (023).	Upper fill of ditch [019].
008	1	Structure	1.85m	0.70m	1.26m	A rectangular brick chamber, possibly a modern capping for 19th century well with 3 large stone slabs at the base. Chamber is 2 courses thick and 8 courses deep and was enclosed with clay to keep water in.	Brick structure, possibly capping old well.

<i>Context No.</i>	<i>Trench</i>	<i>Type</i>	<i>Length (m)</i>	<i>Depth (m)</i>	<i>Width (m)</i>	<i>Description/Interpretation</i>	<i>Stratigraphy and/or phasing info</i>
						Water rising from the base of the feature.	
009	1	Fill	1.50m	0.70m	unknown	Firm dark brown water logged silt deposit. There was small to large inclusions of brick, slate and dressed stone. This is a modern back fill of the brick chamber. Fill is heavily waterlogged due to rising water from below	Fill of brick chamber [008].
010	1	Fill	2.3m	0.2m	unknown	Firm brown/grey clay and silt filled with bone, pottery and re-deposited clay. Possibly upper fill of the ditch	Cut by [025], [039] and [019]
011	1	Fill	1.3m	0.4m	unknown	Loose compaction of grey clay with a large deposit of mostly blue, green igneous stone and boulders as well as sandstone blocks with chisel marks and roof slate. Bone and pottery were also found. This is possibly a demolition deposit containing stone masonry and roof slates. Dump within ditch deposit [019]	Dump of demolition material within ditch [019].
012	1	Deposit	unknown	unknown	unknown	Bluish grey clay. Natural deposit.	Natural clay.
013	1	Cut	2.2m	0.9m	n/a	Cut or disturbance possibly related to brick structure (008), or concrete foundations of modern building. Fill is mixed clays and re-deposited (003) with occasional broken brick suggesting it may have been cut at same time as (008) was in-filled	Probable cut of brick structure [008].
014	1	Deposit/Fill	2.2m	0.82m	unknown	Moderately compact dark brown silts with thick clay bands, some large stone inclusions and occasional broken brick. Fill of (013),	Fill of cut [013].
015	1	Deposit/Fill	0.35m	0.16m	unknown	Loose orange/brown sandy silt suggesting a drainage feature. Fill of [024], possibly truncated by [013]	Fill of drainage ditch [024].
016	1	Deposit/Fill	unknown	0.32m	unknown	Firmly compact, dark brown, sandy silt with occasional stone inclusion, Truncated by [013] and machine excavated. Possible garden soil,	Same as (003), cut by [013]
017	1	Deposit/Fill	1m	0.35m	unknown	Firmly compact grey clay with dense concentration of	Possible up-cast from ditch [019] but

<i>Context No.</i>	<i>Trench</i>	<i>Type</i>	<i>Length (m)</i>	<i>Depth (m)</i>	<i>Width (m)</i>	<i>Description/Interpretation</i>	<i>Stratigraphy and/or phasing info</i>
						small, angular stones and some wood that was machine excavated. Possible up-cast from ditch [019] but may be a continuation of (005) with no evidence of worked stone. Truncated by [024] and [013].	may be a continuation of (005).
018	1	Deposit	unknown	0.45m	n/a	Firmly compact bluish grey clay with rounded blue/green igneous stones, and occasional bone, wood, pot and oyster shell.	Above (026), and cut by [036] and possibly cut by [019].
019	1	Cut	unknown	1.65m	4.2m	Cut of large linear ditch.	Cut into (006)/(020) and possibly (018). Filled by (022), (011), (007), (010), and (005)
020	1	Deposit/Fill	unknown	0.7m	n/a	Dark greenish grey clay with inclusions of rounded greenish blue igneous stones, coal, oyster shell, pot and butchered animal bone. Same as (006). Possible garden soil.	Above ditches [025 & 039], above (021 & 041) and cut by (019).
021	1	Deposit/Fill	unknown	0.4	2.7m	Firmly compact brown clay with organic inclusions and occasional stone, oyster shell, pot sherd and animal bone. Lower fill of ditch (025).	Fill of (025), below (006)/(020),
022	1	Deposit/Fill	unknown	0.4m	3m	Firmly compact brownish grey clay with charcoal flecks and occasional stone inclusion. Lower fill of (019)	Fill of (019), below (011)
023	1	Fill	unknown	0.4m	4m	Firmly compact grey silty clay with occasional inclusions of stone, coal, oyster shell, bone and pot. An upper fill of ditch [019]. Same as (007).	Upper fill of ditch [019].
024	1	Cut	0.4m	0.15m	unknown	Linear cut running north east-south west. Steep sides gradually breaking to a relatively flat base. Possible truncated base of linear drainage ditch with a sandy gravely fill (015).	Filled by (015), possibly truncated by [013]
025	1	Cut	unknown	1.6m	2.75m	Linear ditch cut with steeply sloping sides breaking gradually to a flat base. Appears to be aligned N-S before turning in an easterly direction towards the	Filled by (021), (006)/(020), (035), (041).

<i>Context No.</i>	<i>Trench</i>	<i>Type</i>	<i>Length (m)</i>	<i>Depth (m)</i>	<i>Width (m)</i>	<i>Description/Interpretation</i>	<i>Stratigraphy and/or phasing info</i>
						river.	
026	1	Deposit	unknown	0.24m	unknown	Firmly compact brown clay, rich in organics, with occasional stone, oyster shell, animal bone, and pot sherd.	Above natural clay (012), and below (018). Cut by [019]
027	1	Structure	1.8m	0.35m	1.8m	Concrete foundation pad, in the SW of trench.	Concrete pad.
028	1	Structure	1.8m	0.35m	1.8m	Concrete foundation pad, in the NW of trench.	Concrete pad.
029	1	Deposit/Fill	unknown	1.4m	7.2m	Loosely compact dark brown sandy silt. Backfill of previous trench, with terram lined base.	Fill of [030].
030	1	Cut	unknown	1.4m	7.2m	A linear cut with gently sloping sides and rounded base. Previous excavation trench.	Filled by (029).
031	1	Deposit/Fill	unknown	0.25m	0.8m	Firm light brownish grey clay. Possibly related to the construction of brick structure (008) and used to seal structure.	Clay bonding/waterproofing around brick structure [008].
032	1	Cut	unknown	0.45m	0.7m	Cut with vertical sides and irregular base. A modern disturbance around the upper part of brick structure (008)	Cuts (014). Filled by (002).
033	1	Fill	unknown	0.1m	1.6m	Bluish grey clay, possibly re-deposited natural, near the base of ditch [039].	Above (034), below (040). Fill of [039].
034	1	Fill	unknown	0.25m	1.4m	Firmly compact brown clay rich in grassy organic material with wood. Some animal bone present. Base fill of [039]	Fill of [039]. Below (033).
035	1	Fill	unknown	0.25m	1.9m	Brown clay, rich in organics, with some butchered animal bone. Basal fill of [025].	Fill of [025]. Below (021)
036	1	Cut	unknown	0.32m	0.9m	Possible linear cut with steep sides and relatively flat base. Aligned E-W. Truncated from above by [013]. Possible cut for drainage.	Filled by (017). Cut into (018).
037	1	Deposit/Fill	1.6m	0.17m	0.7m	Loose brown silt with well preserved wood and organic material and bluish green stone inclusions. Possible fill of tree bowl.	Below (006). Above (012)

<i>Context No.</i>	<i>Trench</i>	<i>Type</i>	<i>Length (m)</i>	<i>Depth (m)</i>	<i>Width (m)</i>	<i>Description/Interpretation</i>	<i>Stratigraphy and/or phasing info</i>
038	1	Structure	1.8m	0.35m	1.8m	Concrete foundation pad, in the NE of trench.	Concrete pad.
039	1	Cut	unknown	1.1m	2m	Linear ditch cut with an unclear side on the N, and truncated side in the S, which gradually break to a flat base.	Filled by (034), (033), (040). Cuts (041).
040	1	Fill	unknown	0.7m	c. 2.3m	Firmly compact greenish grey clay with charcoal flecks, occasional stone, butchered bone, iron nails and pot. An upper fill of [039].	Below (006). Above (033) and (034). Truncated by [030].
041	1	Fill	unknown	0.3m	1.3m	Greyish brown clay with charcoal flecks. An interface between (006)/ (020) and (021) in west facing section (DWG#004).	Below (006)/ (020). Above (021). Possible cut by [039].

Table 2: Drawings

<i>Drawing No.</i>	<i>Sheet No.</i>	<i>Context</i>	<i>Subject</i>	<i>Scale</i>
1	1	005	Mid excavation trench plan 1/2	1:20
1	2	006	Mid excavation trench plan 2/2	1:20
2	3	003-005, 007, 012-019, 024, 026, 027, 036	East facing section, drawing 1/4	1:10
2	4	003-005, 007, 010, 011, 013, 014, 019, 022	East facing section, drawing 2/4	1:10
2	5	001-006, 010, 019-021, 025, 028	East facing section, drawing 3/4	1:10
2	6	005, 019-021, 025	East facing section, drawing 4/4	1:10
3	7	002, 008, 009, 014, 031, 032	NW facing section of deposits and brick structure (008)	1:10
4	8	012, 020, 021, 025, 029, 030, 033, 035, 039, 041	West facing section, drawing 1/2	1:10
4	9	012, 029, 030	West facing section, drawing 2/2	1:10
5	10	034	Plan of grassy deposit (034)	1:20
6	11	002-005, 012, 020	Sample section of trench 2	1:10

Table 3: Small Finds & General Finds

<i>Small Find No</i>	<i>Context No</i>	<i>Trench</i>	<i>No of Pieces</i>	<i>Material</i>	<i>Description</i>
1	005	1	1	Pb.	Muscat ball
2	005	1	1	Leather & Metal	Possible scabbard chape
3	006	1	1	Au	Gold and sapphire ring
n/a	Unstratified	1	12	Ceramic	n/a
n/a	Unstratified	1	1	Fe.	n/a
n/a	003	1	1	Fe.	n/a
n/a	003	1	1	Shell	n/a
n/a	003	1	2	Clay Pipe	n/a
n/a	003	1	20	Ceramic	n/a
n/a	003	1	11	Glass	n/a
n/a	003	1	1	Leather	n/a
n/a	003	1	17	Bone	n/a
n/a	004	1	1	Slag	n/a
n/a	004	1	2	Glass	n/a
n/a	004	1	3	Ceramic	n/a
n/a	004	1	2	Bone	n/a
n/a	004	1	1	Wood	n/a
n/a	005	1	2 medium bags	Wood	n/a
n/a	005	1	1	Leather	n/a
n/a	005	1	3	Stone	n/a

<i>Small Find No</i>	<i>Context No</i>	<i>Trench</i>	<i>No of Pieces</i>	<i>Material</i>	<i>Description</i>
n/a	005	1	1	Clay Pipe	n/a
n/a	005	1	1	Tile	n/a
n/a	005	1	16	Ceramic	n/a
n/a	005	1	9	Glass	n/a
n/a	005	1	40	Bone	n/a
n/a	005	1	1	Mortar	n/a
n/a	005	1	6	Shell	n/a
n/a	005	1	1	Fe.	n/a
n/a	006	1	2	Coal	n/a
n/a	006	1	43	Bone	n/a
n/a	006	1	7	Fe.	n/a
n/a	007	1	1 medium bag	Wood	n/a
n/a	007	1	1	Leather	n/a
n/a	007	1	123	Bone	n/a
n/a	007	1	1	Mortar	n/a
n/a	007	1	2	Flint	n/a
n/a	007	1	16	Shell	n/a
n/a	007	1	45	Ceramic	n/a
n/a	007	1	7	Coal	n/a
n/a	007	1	4	Fe.	n/a
n/a	007	1	20	Wood	n/a
n/a	009	1	4	Bone	n/a
n/a	009	1	5	Fe.	n/a
n/a	009	1	1	Slag	n/a
n/a	009	1	1	Ceramic	n/a
n/a	009	1	2 medium bags	Wood	n/a
n/a	010	1	4	Shell	n/a
n/a	010	1	5	Ceramic	n/a
n/a	010	1	12	Bone	n/a
n/a	011	1	3	Shell	n/a
n/a	011	1	1	Fe.	n/a
n/a	011	1	17	Bone	n/a
n/a	011	1	3	Slate	n/a
n/a	011	1	4	Ceramic	n/a
n/a	011	1	1 medium bag	Wood	n/a
n/a	017	1	2	Ceramic	n/a
n/a	018	1	2	Ceramic	n/a
n/a	018	1	9	Bone	n/a
n/a	018	1	1 medium bag	Wood	n/a
n/a	020	1	1	Glass	n/a
n/a	020	1	5	Shell	n/a
n/a	020	1	8	Fe.	n/a
n/a	020	1	6	Coal	n/a
n/a	020	1	48	Ceramic	n/a
n/a	020	1	41	Bone	n/a

<i>Small Find No</i>	<i>Context No</i>	<i>Trench</i>	<i>No of Pieces</i>	<i>Material</i>	<i>Description</i>
n/a	020	1	1 medium bag	Wood	n/a
n/a	021	1	4 medium bags	Wood	n/a
n/a	021	1	4	Wood	n/a
n/a	021	1	1	Stone	n/a
n/a	021	1	23	Ceramic	n/a
n/a	021	1	4	Shell	n/a
n/a	021	1	3	Coal	n/a
n/a	021	1	22	Bone	n/a
n/a	021	1	1	Fe.	n/a
n/a	023	1	2	Ceramic	n/a
n/a	023	1	1 medium bag	Wood	n/a
n/a	025	1	2	Bone	n/a
n/a	026	1	3	Ceramic	n/a
n/a	026	1	4	Bone	n/a
n/a	026	1	1	Shell	n/a
n/a	029	1	2	Bone	n/a
n/a	029	1	2	Ceramic	n/a
n/a	034	1	1	Bone	n/a
n/a	035	1	1 medium bag	Wood	n/a
n/a	035	1	6	Bone	n/a
n/a	035	1	2	Ceramic	n/a
n/a	035	1	3	Wood	n/a

Table 4: Digital Photographs

*Context numbers only listed where deemed significant within each photo

<i>Photo No.</i>	<i>Context No.</i>	<i>Description</i>	<i>From (Compass)</i>
1	n/a	Condition of site on arrival, before stripping of site started	E
2	n/a	Condition of site on arrival, before stripping of site started	E
3	n/a	Condition of site on arrival, before stripping of site started	NE
4	n/a	Working shot showing stripped of topsoil	NE
5	n/a	Working shot showing stripped of topsoil	NE
6	n/a	Context (001) after day one stripping	E
7	n/a	Working shot of topsoil stripping	E
8	n/a	(001) once stripped showing West wall	NE
9	n/a	Site post excavation of (001)	NE
10	n/a	Site post excavation of (001)	NE
11	n/a	The east end of the site post strip	NE
12	n/a	West facing wall post strip	NW
13	n/a	Overview of the site showing waterlogged conditions	NE
14	n/a	Overview of the site showing waterlogged conditions	NE
15	n/a	Trench one waterlogged at the start of day 2	NW
16	n/a	Trench one waterlogged at the start of day 2	NW
17	n/a	Overview of the site showing waterlogged conditions	SW
18	n/a	Working shot showing the wet and waterlogged working	N

<i>Photo No.</i>	<i>Context No.</i>	<i>Description</i>	<i>From (Compass)</i>
		conditions on site	
19	n/a	Working shot showing the wet and waterlogged working conditions on site	NW
20	n/a	Working shot showing the wet and waterlogged working conditions on site	NW
21	n/a	Working shot showing the wet and waterlogged working conditions on site	E
22	n/a	Working shot showing the wet and waterlogged working conditions on site	W
23	n/a	Working shot	NW
24	n/a	Working shot	E
25	n/a	Working shot	SW
26	005	Northern extent of (005) exposed	N
27	005	Northern extent of (005) exposed	SE
28	005	Northern extent of (005) exposed	S
29	005	Northern extent of (005) exposed	NW
30	n/a	Working shot	N
31	n/a	Working shot	NW
32	n/a	Working shot	SW
33	n/a	Working shot	W
34	n/a	Extent of flooding on site overnight	N
35	n/a	Shot showing the extent of overnight flooding on site	NW
36	008	Uncovered brick drain and flooded trench	NW
37	008	Uncovered brick drain and flooded trench	SW
38	008	Uncovered brick drain and flooded trench	SW
39	n/a	Site at start of day showing overnight flooding	S
40	n/a	Site at start of day showing overnight flooding	NW
41	n/a	Site at start of day showing overnight flooding	NW
42	n/a	Site at start of day showing overnight flooding	SW
43	n/a	Site at start of day showing overnight flooding	S
44	n/a	Shot showing the sump dug at south end of trench	S
45	n/a	Shot showing the sump dug at south end of trench	NW
46	n/a	Shot showing the sump dug at south end of trench	N
47	n/a	Section collapse	NW
48	n/a	Trench 2 pre excavation showing flooding	NW
49	n/a	Section collapse	SW
50	006	Test pit through deposit (006)	NE
51	006	Test pit through deposit (006)	NE
52	006	Post excavation of sondage in north-eastern section of trench, base of sondage	NE
53	006	Post excavation of sondage north east section of trench, full section	NE
54	002 – 005, 039	Mid excavation shot of north east facing section	SW
55	002 – 005, 039	Mid excavation shot of north east facing section	NW
56	n/a	Extent of flooding on site	NW
57	n/a	Extent of flooding on site	S

<i>Photo No.</i>	<i>Context No.</i>	<i>Description</i>	<i>From (Compass)</i>
58	002 – 005, 039	Mid-excavation north east facing section Trench 1	N
59	039	Extent of trench flooded	N
60	002 – 005, 039	North side of section zoomed in with ranging pole	NE
61	002 – 005, 039	North side of section zoomed in	NE
62	002 – 005, 007, 011	Middle of section zoomed in 2/3	NE
63	002 – 005, 007, 011	Middle of section with ranging pole	NE
64	013, 014, 019	South end of section zoomed in 3/3	NE
65	019	South end of section	NE
66	002 – 005, 007, 011, 013, 014, 019	Angled view showing section in its entirety	S
67	002 – 005, 007, 011, 013, 014, 019	Angled view showing section in its entirety	S
68	013, 014, 019	South end of Section from a distance 1/3	NE
69	002 – 005, 007, 011	Middle of section from a distance 2/3	NE
70	002 – 006, 019	North end of section from a distance 3/3	NE
71	002 – 005, 007, 011, 013, 014, 019	Angled view of trench and section	N
72	002 – 005, 007, 011, 013, 014, 019	Angled view of trench and section	N
73	002 – 005, 007, 011, 013, 014, 019	Face on photo of eastern facing section wall	NE
74	002 – 005, 007, 011, 013, 014, 019	Face on photo of eastern facing section wall	NE
75	002 – 005, 007, 011, 013, 014, 019	North end of east facing Section	NE
76	013, 014, 019	South end of east facing Section	NE
77	003-007, 010, 011	Close up of north east of trench	NE
78	013, 014, 019	Close up of south end of section	SE
79	013, 014, 019	South end of trench in shadow	SE
80	013, 014, 019	South end of trench in shadow	SE
81	013, 014, 019	Angled shot of south end	SE
82	013, 014, 019	South end of section	SE
83	013, 014, 019	South end of section and trench	SE
84	n/a	Showing the extent of flooding	N
85	n/a	Showing the extent of flooding	NE

<i>Photo No.</i>	<i>Context No.</i>	<i>Description</i>	<i>From (Compass)</i>
86	n/a	Showing the extent of flooding	NE
87	n/a	Site at the end of the day	N
88	n/a	Beginning of section collapse and flooding of trench	NE
89	n/a	Beginning of section collapse	NE
90	n/a	Showing conditions of site, with spoil heap in proximity to trench	NE
91	n/a	Showing conditions of site, with spoil heap in proximity to trench	NE
92	n/a	Section at beginning of the day	NE
93	n/a	Close up of crack in section	NE
94	n/a	Close up of crack in section	NE
95	n/a	Showing extent of flooding in the trench	N
96	n/a	Shot showing entire section starting to collapse	NE
97	n/a	Trench after complete section collapse	NE
98	n/a	Trench after complete section collapse	NE
99	n/a	Section after trench cleaned out by digger	NE
100	n/a	Section after trench cleaned out by digger	NE
101	n/a	South end of section	SE
102	n/a	North end of section	NE
103	n/a	North end of section	NE
104	'025	North end of section	NE
105	'025	North end zoomed in	NE
106	004, 005, 020, 021, 025	North end of section up to concrete block	NE
107	004, 005, 020, 021, 025	North end of section zoomed out	NE
108	004, 005, 020, 021, 025	North end of section zoomed in	NE
109	004, 005, 020, 021, 025	North end of section zoomed out	NE
110	004, 005, 007, 010, 011, 022	Middle of section	NE
111	007, 010, 011, 013-015, 022	Middle of section zoomed in	NE
112	007, 010, 011, 013-015, 022	South end of section	SE
113	007, 010, 011, 013-015, 022, 019	South end of section zoomed in	SE
114	013-015, 024	South end of section	SE
115	n/a	Lengthways view of section	S
116	n/a	Lengthways view of section	S
117	007, 010, 011, 013-015, 022, 019	South end of trench	S
118	013-015, 024	Middle of section	S

<i>Photo No.</i>	<i>Context No.</i>	<i>Description</i>	<i>From (Compass)</i>
119	001-005, 007, 010, 011, 013, 016, 018, 019, 020, 021, 024	Middle of section	S
120	002-005, 007, 010, 011, 022, 019	North end of section	S
121	004, 005, 020, 021, 025	North end of section	S
122	n/a	Lengthways view trench	N
123	n/a	Lengthways view of trench	N
124	n/a	Lengthways view of trench	N
125	013-015, 024	South end of section	SE
126	001-005, 007, 010, 011, 013, 016, 018, 019, 020, 021, 024	Middle of section	NE
127	004, 005, 020, 021, 025	North end of section	NE
128	004, 005, 020, 021, 025	Close up of north end of section	NE
129	004, 005, 007, 010, 011, 022	Close up of middle of the section	NE
130	004, 005, 007, 010, 011, 022	Close up of middle of the section	NE
131	004, 005, 007, 010, 011, 022	Close up of middle of the section	NE
132	013-015, 024	Close up of south end of section	NE
133	n/a	Middle of section after second collapse	NE
134	n/a	Middle of section after second collapse	NE
135	n/a	Close up of middle of the section	NE
136	n/a	Lengthways view of collapse	NE
137	n/a	Close up view of section collapse	NE
138	n/a	Lengthways view of trench	NE
139	n/a	Lengthways view of trench	NE
140	n/a	Lengthways view of trench	NE
141	n/a	Extent of flooding on site from the weekend	N
142	n/a	Extent of flooding on site from the weekend	N
143	n/a	Water level in Trench 1	NW
144	n/a	Water level in Trench 1	NW
145	n/a	Water level in Trench 1	NW
146	n/a	Section collapse in south end of trench	SE
147	n/a	Water level in trench 1	SE
178	008	Exposed brick structure in south end of trench	SE
149	008	Exposed brick structure in south end of trench	SE
150	008	Close up of brick structure in south end of trench	SE

<i>Photo No.</i>	<i>Context No.</i>	<i>Description</i>	<i>From (Compass)</i>
151	008	Top of brick structure	SW
152	008	Top of brick structure	SW
153	008	Top of brick structure	SW
154	'008	Top of brick structure	SW
155	n/a	Working shot cleaning section at brick structure showing working conditions	SE
156	n/a	Working Shot of cleaning section at brick structure showing working conditions	SE
157	002, 008, 009, 014, 017, 031, 032	Cleaned section at brick structure	N
158	002, 008, 009, 014, 017, 031, 032	Cleaned section at brick structure	N
159	002, 008, 009, 014, 017, 031, 032	Cleaned section at brick structure	N
160	002, 008, 009, 014, 017, 031, 032	Showing section and brick structure	NE
161	002, 008, 009, 014, 017, 031, 032	Showing section and brick structure	NE
162	002, 008, 009, 014, 017, 031, 032	Showing section and brick structure	NE
163	002, 008, 009, 014, 017, 031, 032	Showing section and brick structure	NE
164	002, 008, 009, 014, 017, 031, 032	Showing section and brick structure	NE
165	002, 008, 009, 014, 017, 031, 032	Showing section and brick structure	NE
166	002, 008, 009, 014, 017, 031, 032	Showing section and brick structure	NE
167	035	Wood in situ from (035)	W
168	035	Wood in situ from (035)	W
169	034	Grassy deposit (034)	W
170	034	Grassy deposit (034)	W
171	034	Grassy deposit (034)	E
172	034	Grassy deposit (034)	N
173	020, 021, 025, 033, 034, 035,	North-west facing section, north end of trench	NW

<i>Photo No.</i>	<i>Context No.</i>	<i>Description</i>	<i>From (Compass)</i>
	039, 040, 041		
174	020, 021, 025, 033, 034, 035, 039, 040, 041	North-west facing section, north end of trench	NW
175	020, 021, 025, 033, 034, 035, 039, 040, 041	Angled shot of north-west facing section	SW
176	020, 021, 025, 033, 034, 035, 039, 040, 041	Angled shot of north-west facing section	SW
177	020, 021, 025, 033, 034, 035, 039, 040, 041	Angled shot of north-west facing section	SW
178	020, 021, 025, 033, 034, 035, 039, 040, 041	North-west facing section	NW
179	020, 021, 025, 033, 034, 035, 039, 040, 041	North-west facing section	NW
180	020, 021, 025, 033, 034, 035, 039, 040, 041	North-west facing section	NW
181	020, 021, 025, 033, 034, 035, 039, 040, 041	North-west Facing Section	NW
182	020, 021, 025, 033, 034, 035, 039, 040, 041	North-west facing section, north end of trench	NW
183	'025	Edge of ditch, north end	S
184	'025	Edge of ditch, north end	S
185	'025	Edge of ditch, north end	S
186	'025	Edge of ditch, north end	S
187	'025	Edge of ditch, north end	S
188	'025	Edge of ditch, north end	S
189	'025	Edge of ditch, north end	SW
190	n/a	Working shot in trench 1	NW
191	020, 021, 025, 033, 034, 035, 039, 040, 041	South end of north-west facing section	NW
192	020, 021, 025, 033, 034, 035, 039, 040, 041	South end of north-west facing section	NW
193	020, 021, 025, 033, 034, 035, 039, 040, 041	South end of north-west facing section	NW
194	020, 021, 025,	Lengthways view of section	S

<i>Photo No.</i>	<i>Context No.</i>	<i>Description</i>	<i>From (Compass)</i>
	033, 034, 035, 039, 040, 041		
195	n/a	Working shot of digger	NW
196	020, 021, 025, 033, 034, 035, 039, 040, 041	North-west facing section showing bottom of ditch	NW
197	020, 021, 025, 033, 034, 035, 039, 040, 041	North-west facing section showing bottom of ditch	NW
198	020, 021, 025, 033, 034, 035, 039, 040, 041	North-west facing section showing bottom of ditch	NW
199	020, 021, 025, 033, 034, 035, 039, 040, 041	North-west facing section showing bottom of ditch	NW
200	020, 021, 025, 033, 034, 035, 039, 040, 041	North-west facing section showing bottom of ditch	NW
201	020, 021, 025, 033, 034, 035, 039, 040, 041	North end of north-west facing section showing bottom of ditch	NW
202	020, 021, 025, 033, 034, 035, 039, 040, 041	North end of north-west facing section showing bottom of ditch	NW
203	020, 021, 025, 033, 034, 035, 039, 040, 041	North end of north-west facing section showing bottom of ditch	NW
204	020, 021, 025, 033, 034, 035, 039, 040, 041	North end of north-west facing Section	NW
205	020, 021, 025, 033, 034, 035, 039, 040, 041	North end of north-west facing Section	NW
206	020, 021, 025, 033, 034, 035, 039, 040, 041	North-west facing section in shadow	NW
207	020, 021, 025, 033, 034, 035, 039, 040, 041	North-west facing section in shadow	NW
208	020, 021, 025, 033, 034, 035, 039, 040, 041	North end of north-west facing section in shadow	NW
209	020, 021, 025, 033, 034, 035, 039, 040, 041	North end of north-west facing section in shadow	NW
210	020, 021, 025,	North end of north-west facing section in shadow	NW

<i>Photo No.</i>	<i>Context No.</i>	<i>Description</i>	<i>From (Compass)</i>
	033, 034, 035, 039, 040, 041		
211	020, 021, 025, 033, 034, 035, 039, 040, 041	Full section in shadow	NW
212	020, 021, 025, 033, 034, 035, 039, 040, 041	Full section in shadow	NW
213	020, 021, 025, 033, 034, 035, 039, 040, 041	Full section in shadow	NW
214	020, 021, 025, 033, 034, 035, 039, 040, 041	North end of section in shadow	NW
215	020, 021, 025, 033, 034, 035, 039, 040, 041	Lengthways view of full section	NW
216	020, 021, 025, 033, 034, 035, 039, 040, 041	Full section with south end exposed	NW
217	020, 021, 025, 033, 034, 035, 039, 040, 041	Full section with south end exposed	NW
218	020, 021, 025, 033, 034, 035, 039, 040, 041	Full section with south end exposed	NW
219	020, 021, 025, 033, 034, 035, 039, 040, 041	Full section with south end exposed	NW
220	020, 021, 025, 033, 034, 035, 039, 040, 041	North end of section	NW
221	020, 021, 025, 033, 034, 035, 039, 040, 041	Middle of section	W
222	020, 021, 025, 033, 034, 035, 039, 040, 041	Middle of section	W
223	020, 021, 025, 033, 034, 035, 039, 040, 041	South end of section	SW
224	020, 021, 025, 033, 034, 035, 039, 040, 041	Lengthways view of section	S
225	020, 021, 025, 033, 034, 035,	Lengthways view of section	S

<i>Photo No.</i>	<i>Context No.</i>	<i>Description</i>	<i>From (Compass)</i>
	039, 040, 041		
226	020, 021, 025, 033, 034, 035, 039, 040, 041	Lengthways view of Section	S
227	020, 021, 025, 033, 034, 035, 039, 040, 041	Lengthways view of section	S
228	020, 021, 025, 033, 034, 035, 039, 040, 041	Lengthways view of section	S
229	020, 021, 025, 033, 034, 035, 039, 040, 041	Lengthways view of Section	S
230	020, 021, 025, 033, 034, 035, 039, 040, 041	Lengthways view of section	S
231	'019	South End of trench	SW
232	'019	South End of trench	SW
233	'019	South end of trench	SW
234	020, 021, 025, 033, 034, 035, 039, 040, 041	Middle of section	SW
235	020, 021, 025, 033, 034, 035, 039, 040, 041	Middle of section	SW
236	019, 033, 039, 040	Middle of section	W
237	'019	South end of section	NW
238	'019	South end of section	NW
239	019, 033, 039, 040	Angled view of south end	NW
240	019, 033, 039, 040	Angled view of south end	NW
241	019, 033, 039, 040	Angled view of south end	NW
242	019, 033, 039, 040	South end of trench	W
243	019, 033, 039, 040	South end of trench	W
244	019, 033, 039, 040	South end of trench	W
245	020, 021, 025, 033, 034, 035, 039, 040, 041	North end showing position of kubiena boxes	NW
246	020, 021, 025, 033, 034, 035,	North end showing position of kubiena boxes	NW

<i>Photo No.</i>	<i>Context No.</i>	<i>Description</i>	<i>From (Compass)</i>
	039, 040, 041		
247	020, 021, 025, 033, 034, 035, 039, 040, 041	North end showing position of kubiena boxes	NW
248	020, 021, 025, 033, 034, 035, 039, 040, 041	North end showing position of kubiena boxes	NW
249	020, 021, 025, 033, 034, 035, 039, 040, 041	North end showing position of kubiena boxes	NW
250	020, 021, 025, 033, 034, 035, 039, 040, 041	North end showing position of kubiena boxes	NW
251	n/a	Flooded conditions of site after weekend	NW
252	n/a	Flooded conditions of site after weekend	NW
253	008, 013, 016-018, 026, 036	Southern end of north-east facing section of trench 1	NE
254	008, 013, 016-018, 026, 036	Southern end of north-east facing section of trench 1	SE
255	008, 013, 016-018, 026, 036	Southern end of north-east facing section of trench 1	SE
256	002, 008, 009, 014, 017, 031, 032	Southern end of trench and brick structure	N
257	n/a	Southern end of trench and brick structure	SW
258	n/a	Trench 1 backfilled	N
259	n/a	Working shot	E
260	n/a	Site partially re-instated	N
261	n/a	Site partially re-instated	N
262	n/a	Concrete floor and demolition material in north-western corner of site	NE
263	n/a	Concrete floor and demolition material in north-western corner of site	S
264	n/a	Trench 1 backfilled and site partially re-instated	N
265	n/a	Trench 1 backfilled and site partially re-instated	N
266	n/a	Pre excavation shot of trench 2	NE
267	n/a	Working shot	N
268	n/a	Working shot	NE
269	n/a	Working shot	NE
270	n/a	Working shot	W
271	n/a	Mid excavation shot of trench 2, western end	NW
272	n/a	Mid excavation shot of trench 2, western end	NW
273	n/a	Mid excavation shot of trench 2, western end	NW
274	n/a	Mid excavation shot of trench 2, western end	NW
275	n/a	Mid excavation shot of trench 2, western end	NW
276	n/a	Mid excavation shot of trench 2, western end	NW

<i>Photo No.</i>	<i>Context No.</i>	<i>Description</i>	<i>From (Compass)</i>
277	n/a	Mid excavation shot of trench 2, western end	NW
278	n/a	Mid excavation shot of trench 2, western end	NW
279	n/a	Mid excavation shot of trench 2, western end	NW
280	n/a	Mid excavation shot of trench 2, western end	NW
281	n/a	Mid excavation shot of trench 2, western end	NW
282	n/a	Mid excavation shot of trench 2, western end	NW
283	n/a	Mid excavation shot of trench 2, western end	NW
284	n/a	Mid excavation shot of trench 2, western end	NW
285	n/a	Mid excavation shot of trench 2, western end	NW
286	n/a	Mid excavation shot of trench 2, western end	NW
287	n/a	Mid excavation shot of trench 2, western end	NW
288	n/a	Mid excavation shot of trench 2, western end	NW
289	n/a	Mid excavation shot of trench 2, western end	NW
290	n/a	Mid excavation shot of trench 2, western end	NW
291	n/a	Mid excavation shot of trench 2, western end	NW
292	n/a	Mid excavation shot of trench 2, western end	NW
293	n/a	Mid excavation shot of trench 2, western end	NW
294	n/a	Mid excavation shot of trench 2, western end	NW
295	n/a	Mid excavation shot of trench 2, western end	NW
296	n/a	Mid excavation shot of trench 2, western end	NW
297	n/a	Mid excavation shot of trench 2, western end	NW
298	n/a	Mid excavation shot of trench 2, western end	NW
299	n/a	Mid excavation shot of trench 2, western end	NW
300	n/a	Post excavation shot of trench 2, western end	NW
301	n/a	Natural stone mound in trench 2, central section	NE
302	n/a	Natural stone mound in trench 2, central section	NE
303	n/a	Natural stone mound in trench 2, central section	NE
304	n/a	Natural stone mound in trench 2, central section	NE
305	n/a	South facing section, trench 2, central section	S
306	n/a	South facing section, trench 2, central section	S
307	n/a	South facing section, trench 2, central section	S
308	n/a	South facing section, trench 2, central section	S
309	n/a	South facing section, trench 2, central section	S
310	n/a	Mid excavation shot trench 2, central section	E
311	n/a	Mid excavation shot trench 2, central section	E
312	n/a	Mid excavation shot trench 2, central section	E
313	n/a	Mid excavation shot trench 2, central section	E
314	n/a	Mid excavation shot trench 2, central section	E
315	n/a	Mid excavation shot trench 2, central section	S
316	n/a	Mid excavation shot trench 2, central section	SW
317	n/a	Mid excavation shot trench 2, central section	S
318	n/a	Mid excavation shot trench 2, central section	E
319	n/a	Mid excavation shot trench 2, central section	E
320	n/a	Mid excavation shot trench 2, central section	SE
321	n/a	Mid excavation shot trench 2, central section	SE

<i>Photo No.</i>	<i>Context No.</i>	<i>Description</i>	<i>From (Compass)</i>
322	n/a	Post excavation shot trench 2, central section	S
323	n/a	Post excavation shot trench 2, central section	S
324	n/a	Post excavation shot trench 2, central section	S
325	n/a	Post excavation shot trench 2, central section	SE
326	n/a	Post excavation shot trench 2, central section	SE
327	n/a	Post excavation shot trench 2, central section	N
328	n/a	Post excavation shot trench 2, central section	N
329	n/a	Post excavation shot trench 2, central section	N
330	n/a	Post excavation shot trench 2, central section	N
331	002 – 005, 012, 020	Cleaned up section of trench 2	S
332	002 – 005, 012, 020	Cleaned up section of trench 2	S
333	037	Mid excavation shot of tree throw	N
334	037	Mid excavation shot of tree throw	E
335	037	Mid excavation shot of tree throw	N
336	037	Mid excavation shot of tree throw	N
337	037	Mid excavation shot of tree throw	N
338	037	Mid excavation shot of tree throw	N
339	037	Mid excavation shot of tree throw	N
340	037	Mid excavation shot of tree throw	E
341	037	Mid excavation shot of tree throw	E
342	037	Mid excavation shot of tree throw	E
343	037	Mid excavation shot of tree throw	E
344	n/a	Mid excavation shot of trench 2, eastern end	SE
345	n/a	Mid excavation shot of trench 2, eastern end	E
346	n/a	Mid excavation shot of trench 2, eastern end	E
347	n/a	Mid excavation shot of trench 2, eastern end	E
348	n/a	Mid excavation shot of trench 2, eastern end	E
349	n/a	Mid excavation shot of trench 2, eastern end	E
350	n/a	Mid excavation shot of trench 2, eastern end	E
351	n/a	Mid excavation shot of trench 2, eastern end	E
352	n/a	Mid excavation shot of trench 2, eastern end	E
353	n/a	Mid excavation shot of trench 2, eastern end	E
354	n/a	Mid excavation shot of trench 2, eastern end	E
355	n/a	Mid excavation shot of trench 2, eastern end	E
356	n/a	Mid excavation shot of trench 2, eastern end	E
357	n/a	Mid excavation shot of trench 2, eastern end	SE
358	n/a	Mid excavation shot of trench 2, eastern end	S
359	n/a	Mid excavation shot of trench 2, eastern end	E
360	n/a	Mid excavation shot of trench 2, eastern end	E
361	n/a	Mid excavation shot of trench 2, eastern end	E
362	n/a	Mid excavation shot of trench 2, eastern end	E
363	n/a	Mid excavation shot of trench 2, eastern end	E
364	n/a	Mid excavation shot of trench 2, eastern end	E

<i>Photo No.</i>	<i>Context No.</i>	<i>Description</i>	<i>From (Compass)</i>
365	n/a	Mid excavation shot of trench 2, eastern end	E
366	n/a	Mid excavation shot of trench 2, eastern end	E
367	n/a	Mid excavation shot of trench 2, eastern end	E
368	n/a	Mid excavation shot of trench 2, eastern end	E
369	n/a	Mid excavation shot of trench 2, eastern end	E
370	n/a	Post excavation shot of trench 2, eastern end	E
371	n/a	Post excavation shot of trench 2, eastern end	E
372	n/a	Mid excavation shot of trench 3	SE
373	n/a	Mid excavation shot of trench 3	N
374	n/a	Mid excavation shot of trench 3	N
375	n/a	Mid excavation shot of trench 3	N
376	n/a	Mid excavation shot of trench 3	N
377	n/a	Mid excavation shot of trench 3	N
378	n/a	Mid excavation shot of trench 3	N
379	035	Post excavation shot of trench 3	E
380	035	Post excavation shot of trench 3	E
381	035	Post excavation shot of trench 3	N
382	035	Post excavation shot of trench 3	N
383	035	Post excavation shot of trench 3	N
384	035	Post excavation shot of trench 3	NE
385	n/a	Large worked stone fragment recovered from deposit 005	N
386	n/a	Large worked stone fragment recovered from deposit 005	NE
387	n/a	Large worked stone fragment recovered from deposit 005	NW
388	n/a	Large worked stone fragment recovered from deposit 005	N
389	n/a	Large worked stone fragment recovered from deposit 005	E

Table 5: Sample List

<i>Sample No.</i>	<i>Context No.</i>	<i>% of deposit</i>	<i>Vol. (l)</i>	<i>No./Size Bucket</i>	<i>Reason for sampling</i>					<i>Application/ comments</i>
					<i>Pot</i>	<i>Lithic</i>	<i>Bone</i>	<i>Botanics</i>	<i>Other</i>	
1	004	<10	10	1	✓	✓	✓	✓		Routine sampling for artefact & environmental evidence
2	020	<10	10	1	✓	✓	✓	✓		Routine sampling for artefact & environmental evidence
3	021	<10	10	1	✓	✓	✓	✓		Routine sampling for artefact & environmental

Sample No.	Context No.	% of deposit	Vol. (l)	No./Size Bucket	Reason for sampling					Application/ comments
					Pot	Lithic	Bone	Botanics	Other	
										evidence
4	007	<10	10	1	✓	✓	✓	✓		Routine sampling for artefact & environmental evidence
5	022	<10	10	1	✓	✓	✓	✓		Routine sampling for artefact & environmental evidence
6	023	<10	10	1	✓	✓	✓	✓		Routine sampling for artefact & environmental evidence
7	018	<10	10	1	✓	✓	✓	✓		Routine sampling for artefact & environmental evidence
8	021	<10	10	1	✓	✓	✓	✓		Routine sampling for artefact & environmental evidence
9	034	<10	20	2	✓	✓	✓	✓		Routine sampling for artefact & environmental evidence
10	037	20	10	1	✓	✓	✓	✓		Routine sampling for artefact & environmental evidence
11	035	<10	10	1	✓	✓	✓	✓		Routine sampling for artefact & environmental evidence
12	026	<10	10	1	✓	✓	✓	✓		Routine sampling for artefact & environmental

Sample No.	Context No.	% of deposit	Vol. (l)	No./Size Bucket	Reason for sampling					Application/ comments
					Pot	Lithic	Bone	Botanics	Other	
										evidence
13	041/02 1	<10	n/a	1 small kubiana				✓		Sample from section DWG#004 - Tin A
14	021/03 5	<10	n/a	1 small kubiana				✓		Sample from section DWG#004 - Tin B
15	021/03 5	<10	n/a	1 small kubiana				✓		Sample from section DWG#004 - Tin C
16	033/03 4	<10	n/a	1 small kubiana				✓		Sample from section DWG#004 - Tin D
17	021/03 5	<10	n/a	1 large kubiana				✓		Base of ditch [025]
18	033/03 4	<10	n/a	1 large kubiana				✓		Base of ditch [039]

APPENDIX 2: Stage 1 Written Scheme of Investigation

11 Station Road, Stirling, FK8 2BY

Planning ref: 15/00672/CON

Archaeological Written Scheme of Investigation

Prepared by David Sneddon

1.0 Non-Technical Summary

This document sets out Northlight Heritage's Written Scheme of Investigation (WSI), on behalf of Gillian Leathley-Gibb for archaeological works relating to proposed development on land at 11 Station Road, Stirling, FK8 2BY. The archaeological work is taking place to satisfy a planning condition (Planning ref: 15/00672/CON).

This document establishes actions and products required to achieve Stage 1 of a potentially three-stage process, Stage 2 being any further work, including fieldwork arising from Stage 1, such as the development and implementation of a mitigation strategy to deal with any significant archaeology not yet identified, and Stage 3 being the further analysis of any materials recovered during the field work in either or both Stages 1 and 2 and/or the preparation of a final report on all works constituting preservation by record for publication, as appropriate.

2.0 Site Location and Description

The land proposed for development is at 11 Station Road, Stirling and is centred on NGR NS 7972, 9356. The site lies opposite Stirling Station near to the junction of Station Road and Goosecroft Road (Figure 1). It is bound to the south-west by the gardens of properties fronting onto Murray Place while the north-western side is bound by a lane accessing the rear of Murray Place.

3.0 Archaeological and Historical Background

The development site is located in the immediate vicinity of a former friary. Although the exact location and extent of it is not currently known historical sources note that the thirteenth century church of the Dominican Friars was demolished during the reformation in 1559. The supposed site of a Dominican Monastery is shown on the Ordnance Survey (OS) Town Plan of Stirling, published in 1858, to the rear of 80-82 Murray Place while, in more recent times, reappraisal of excavations undertaken in the early twentieth century and additional excavation undertaken in the 1990s have uncovered the suspected remains of the Friary walls within the gardens to the rear of 60-68 Murray place (Page & Page 1994). The discovery of skeletal remains, both articulated and disarticulated, have been reported in the gardens of 60-68 and 84 Murray Place suggesting that the general area to the rear of Murray place could correspond to the graveyard of the Medieval Friary while a stone drain, sump and possible Medieval cobbled surface recorded at 3 Station Road, bordering the garden of 60-68 Murray Place, could also be associated with the friary.

The early OS Town Plan of Stirling (published in 1858) shows a well in the grounds of the former Queen's Bank at the corner of Station Road and Murray Place while other wells have been reported in the basement of 16 Murray Place.

On the 1858 OS Town Plan of Stirling the development site itself appears to have been part of relatively formal gardens to the rear of 60-68 Murray Place while the OS 25 inch to the mile map surveyed in 1913 shows that a small building had been constructed in the western corner. This is also visible on the 1947 edition of the same

series.

Previous evaluation and a partially completed strip, map and sample excavation within the development site was undertaken in 2016 which revealed possible medieval and post medieval garden soils, peaty deposits and a large ditch running approximately north-east to south-west across the site. The ditch was shown to be up to 4.7 m in width and 1.25 m in depth. The multiple fills of the ditch, which showed signs of being re-cut, contained medieval and post-medieval pottery fragments, animal bone and oyster shell while the basal fill was highly organic.

Archaeological evaluation and subsequent excavation in 2015 at Station Square, located immediately north-west of the development site, revealed structural remains and deposits likely relating to the friary and medieval activity in Stirling (Will 2015).

4.0 Project Objectives

The project objectives are:

- to excavate and record four archaeological trenches across the previously identified ditch at four proposed pile locations;
- to establish the presence or absence of any archaeological remains which may be present on the site at each of the remaining pile locations;
- to determine the character, extent and significance of any archaeological deposits encountered;
- out with the location of the ditch, where ditch fills within the trenches will be fully excavated, and where preservation *in-situ* is not feasible, provide sufficient information to develop a stage 2 mitigation strategy to excavate and record any significant archaeological features or sites encountered to ensure preservation through record.

5.0 Methodology

5.1 Trenches over ditch

Four trenches each measuring approximately 5.5 m long by 2 m in width will be excavated perpendicular to the line of the previously uncovered ditch at the locations of piles 2, 8, 13 and 19 (Figure 2). Modern obstacles may result in slight variations to the trench positions while health and safety issues related to excavating around the boundary of the development area could result in trenches not being positioned exactly over the pile locations i.e. it will not be possible to excavate deep trenches abutting the site boundary to ensure adjacent public walkways and retaining wall are not undermined.

Previous archaeological evaluation and partial strip, map and sample excavation had revealed a 0.2 m to 0.5 m thick layer of mixed red blaes and rubble spread across the site representing a modern levelling layer. Beneath this, over the south-eastern half of the site, lay another likely modern levelling layer comprising clay, silt and rubble up to 0.3 m in depth. These modern layers within the four trenches will be excavated by mechanical excavator, using a toothless ditching bucket under direct archaeological instruction and supervision. Dependant on the overall depth of the trench, and the requirement for it to be stepped, excavation of these deposits is likely to be required in areas adjacent to the trenches. It is also possible that, due to the relatively small size of the overall development area and the likely requirement for stepping trenches, these modern deposits are removed completely from the area corresponding to the location of the ditch.

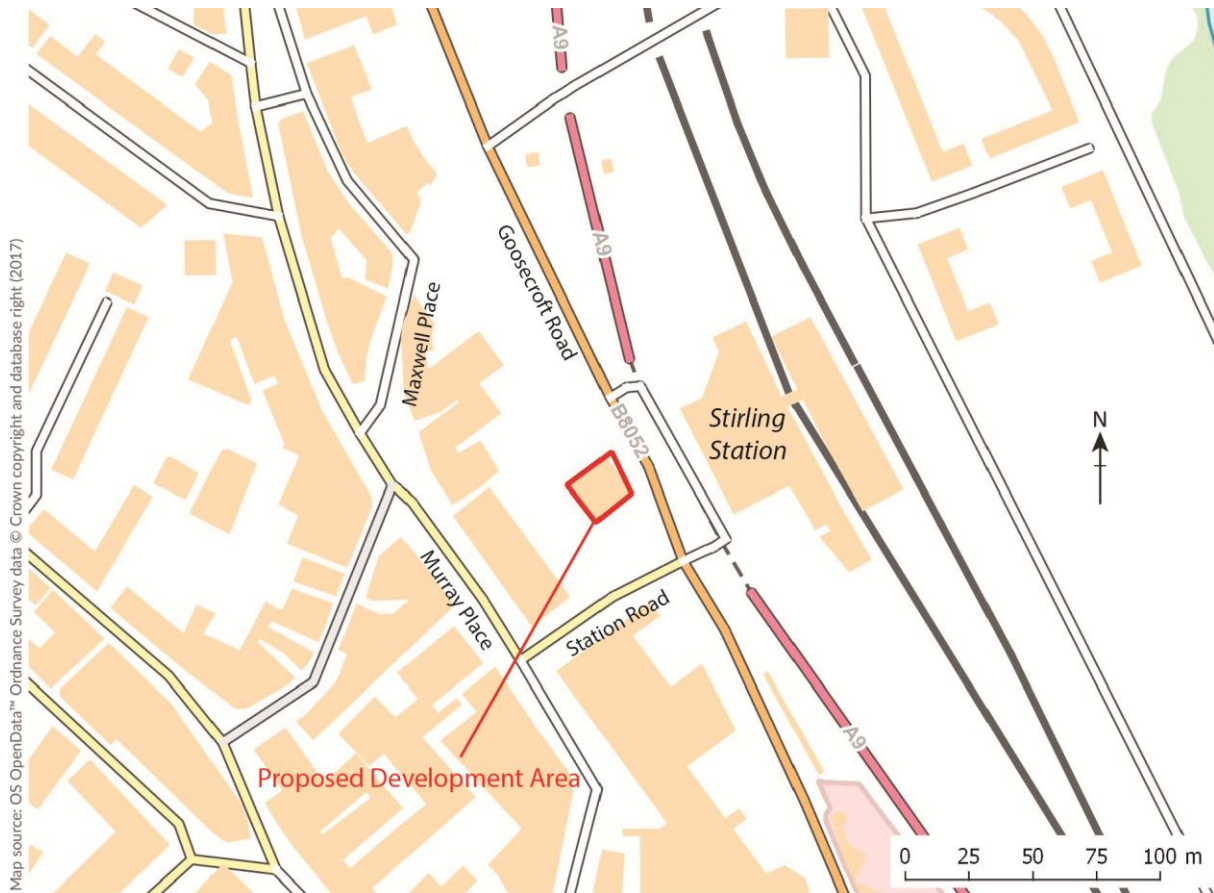


Figure 1: Site Location

Prior strip map and sample excavation over the south-eastern half of the site revealed some 1 m of grey/black silt/clay deposits which overlay the large ditch and contained small amounts of pottery, metal, clay pipe, animal bone and glass. Where encountered these silt/clay layers overlying the ditch will be removed in spits by mechanical excavator, using a toothless ditching bucket under direct archaeological instruction and supervision. Depending on the overall depth of the trench, and the requirement for it to be stepped, excavation of these deposits is likely to be required in areas adjacent to the trenches. This could amount to the majority of the grey/black silt/clay deposits being removed from above the ditch.

Parts of these trenches may include prior evaluation and strip, map and sample excavation trenches. Where possible the backfill of these trenches will be removed by machine under direct archaeological instruction.

All significant archaeological features lying below or within these layers that cannot be preserved *in-situ* will be fully excavated by hand. This will include all ditch fills and any related features.

The site will be secured at night although it may also be appropriate to clearly demarcate the individual trench edges within the secured area.

5.2 Trenches at remaining pile locations

A series of 2 m by 2 m trenches, or a variation thereof, will be excavated at each of the remaining pile locations (Figure 2). Modern obstacles may result in slight variations to the trench positions while health and safety issues related to excavating around the boundary of the development area could result in trenches not being

positioned exactly over the pile locations i.e. it will not be possible to excavate deep trenches abutting the site boundary to ensure adjacent public walkways and retaining wall are not undermined.

These will be excavated in controlled spits by mechanical excavator, using a toothless ditching bucket under direct archaeological supervision. If no significant archaeology is uncovered the trenches will be excavated down to the natural sterile subsoil.

Areas of potential archaeological interest within each trench will be cleaned by hand. Should archaeological remains be encountered during trenching operations, features and deposits will be recorded but not excavated, except insofar as excavation is necessary to determine the character, extent, quality, date and complexity of the features/deposits present.

In the event that archaeological features, including inhumations, are uncovered which are deemed to be of significance the trenches may have to be extended in order to investigate the broader surrounding area with the aim of establishing their extent and context.

Given the relatively small size of these trenches and the potential depth of deposits present, it is likely that they may have to be stepped to provide safe working conditions. This would likely involve the removal of modern and overburden deposits over a much larger area around the trenches.

5.3 *General Excavation & Recording*

The written record of all archaeological features, deposits and finds will be by means of conventional *pro forma* sheets. Scaled hand-drawn plans will also be made at 1:20 and sections at 1:10. High resolution digital images will be taken. By the close of the work the locations and dimensions of all trenches will be recorded in such a way as to tie them to the OS grid.

All archaeological finds will be dealt with by the on-site archaeologists. The general practice will be to bulk recover artefacts by context although if significant finds are encountered there may be a requirement for three-dimensional recording prior to up-lifting. Finds which are of particular sensitivity or importance may require specialist conservation assessment.

All archaeologically significant features fills and deposits will be sampled for artefactual and palaeo-environmental evidence. Where appropriate this will also include micromorphological sampling in order to address key issues relating to soil development at the site. Where well preserved and significant waterlogged deposits are present a programme of pollen analysis may be required.

Where particularly extensive, numerous or complex archaeological deposits or features are proven to be present the developer and Stirling Council Archaeologist will be informed and discussions, including a site meeting if deemed necessary and appropriate, will be held between all relevant parties to agree the most appropriate strategy. Where preservation *in situ* is not feasible and where full excavation is not possible within the confines of this stage of work it will generally comprise a need to develop a stage 2 mitigation strategy to excavate and record any significant archaeological features or sites to ensure preservation through record.

Stirling Council Archaeology Service, acting on behalf of the planning authority, will be the final judge of significance in any case and may require full excavation of features to be destroyed by the proposals.

This document details the methodology to be employed in implementing Stage 1. The detailed methodology to be employed during any Stage 2 mitigation works and/or Stage 3 post excavation analysis and publication, would, if required, be specified in *addenda* to this document, to be called *project designs* for any proposed

fieldwork at Stage 2, and *post- excavation research designs (PERDs)* for work required at Stage 3. These *addenda*, if required, will be submitted by the developer for the agreement of Stirling Council Archaeology Service, and prior to the commencement of any archaeological work, which may be specified in the *addenda* documents. In the case of *addenda* relating to Stage 2 works (*project designs*); these will be implemented in full before any development work proceeds in any relevant development phase. If a PERD is required it will encompass material recovered from previous phases of archaeological work on the site.

5.4 *Human Remains*

Should human remains be encountered, the local police, Stirling Council's Archaeology Service and the developer will be notified immediately and thereafter prescribed procedure for their treatment will be followed, in accordance with legal requirements.

5.5 *Project Monitoring*

Stirling Council Archaeology Service and the developer will be notified immediately of any unexpectedly significant or complex discoveries, or other unexpected occurrences which might significantly affect the archaeological work and/or the development. In that event, all finds and features will be left *in situ* until arrangements have been agreed for safeguarding or recording them.

An archaeological project manager will be appointed for all the works outlined above and the manager will be the first point of contact for any project-related liaison with Stirling Council Archaeology Service and the developer or the developer's agent for all formal logistical, administrative and financial aspects of the project.

It will be important to ensure that all formal communications, instructions and/or requests (including any proposed amendments to on-site strategies) are ultimately made in writing to the project manager, to ensure organisational, administrative and financial efficiency.

Any site visitors, including representatives of Stirling Council Archaeology Service will be required to conform to the health and safety regime in place during the fieldwork programme.

6.0 Reporting, Archive & Small Finds Arrangements

Following completion of the fieldwork, a report on the fieldwork will be prepared, outlining the main results and incorporating lists of all features, finds, samples, photographs and drawings. This report will be produced as an electronic report (and a desk-top published document where this is required). The report will also include recommendations for further mitigation measures appropriate to the remains encountered. Implementation of any recommendations offered would, however, only follow consultation with Stirling Council Archaeology Service.

The report will be prepared, in structural and textual content terms, to the standard of the traditional Data Structure Report (DSR) as defined by Historic Scotland, in their "Project Design, Implementation and Archiving" document (Historic Scotland Archaeological Procedure Paper 2, 1996). The report will provide "a structure or organisation to the primary records" of the fieldwork, forming "a basis for further work". It will be "essentially, an initial organisation on paper of the information retrieved from the site" and consist "of a narrative account of the contexts...discovered, including field interpretations and a set of lists. It is not intended for publication, but will itself be archived." A project archive will be prepared and made ready for submission within six months of the completion of all fieldwork or post-excavation work (as appropriate). The resultant site archive will be deposited with the National Monuments Records for Scotland.

A short report detailing the results will also be submitted for publication in *Discovery and Excavation in Scotland*

and to *OASIS*.

Copies of the DSR will be provided to Stirling Council Archaeology Service, the developer and to the National Monuments Record for Scotland. Further copies can be distributed to other recipients if requested and specified.

The results of this work will inform the need for further (Stage 2) fieldwork or further (Stage 3) analysis of materials/generation of a report for publication, the report will, on request, be followed by a costed assessment specifying any work deemed necessary in order to complete the project. Publication, where required, would normally be sought in a suitable academic journal. The post-excavation process is essential to bring a piece of archaeological work to completion.

The laws relating to Treasure Trove and *Bona Vacantia* in Scotland apply to all finds where the original owner cannot be identified. This includes all material recovered during archaeological fieldwork. Accordingly, all assemblages recovered from archaeological fieldwork are claimed automatically by the Crown and must be reported to the Scottish Archaeological Finds Allocation Panel through its secretariat, the Treasure Trove Unit. In the event of the discovery of small finds during the evaluation or any subsequent stages of work, a filled-out copy of the form "Declaration of an Archaeological Assemblage from Fieldwork" and two copies of the pertinent Data Structure Report will be submitted to the Panel at the conclusion of the fieldwork. The Panel will then be responsible for recommending to the Queen's and Lord Treasurer's Remembrancer (QLTR) which museum should be allocated the finds.

All artefacts will be stored temporarily by Northlight until a decision has been made by the Panel regarding the museum which will be allocated the finds for permanent curation. All finds will be transferred to the appropriate museum within six months of completion of the fieldwork, if no post-excavation work is required, or at the end of the latest finishing post-excavation programme.

In the event that unallocated finds recovered from the archaeological work or any later stages of work require to be removed from Scotland, for the purposes of post-excavation analysis, there is a legal requirement to obtain the consent of the QLTR, in the form of a loan agreement. Initially, an indication of intent would be registered with the Treasure Trove Secretariat at the National Museums of Scotland, after which formal consent would be applied for using the form "Application for authority to borrow unallocated Treasure Trove for research purposes". A consent form, signed by the QLTR and specifying conditions (such as the period during which finds may be held outside Scotland) would then be issued. Receipt of this signed consent form will be required before items may be removed from the country.

7.0 Timetable

The excavation will be undertaken during July and August 2017.

Any DSR to be submitted within 4 weeks of completion of any fieldwork

Any PERD, if required, to be submitted within 3 months of agreement of DSR with Stirling Council Archaeology Service.

Any final publication, if required, to be submitted within two years of agreement of PERD with Stirling Council Archaeology Service.

8.0 Staffing

Project Manager – David Sneddon

Project Director – Steven Black

9.0 Health and Safety

Prior to fieldwork commencing a risk assessment of the project will be undertaken. Northlight Heritage, as part of York Archaeological Trust, adheres to all standard Health and Safety regulations governing fieldwork projects.

Northlight Heritage also possesses appropriate third party/public liability insurance cover, proof of which may be supplied upon request.

10.0 References

Page and Page, E R and C 1994, *64 Murray Place (Stirling parish): Blackfriars Church', Discovery Excav Scot, 1994*, P11.

Will, R 2015, *Station Square, Stirling: Archaeological Watching Brief & Excavation*, Unpublished Data Structure Report, GUARD project 3884.

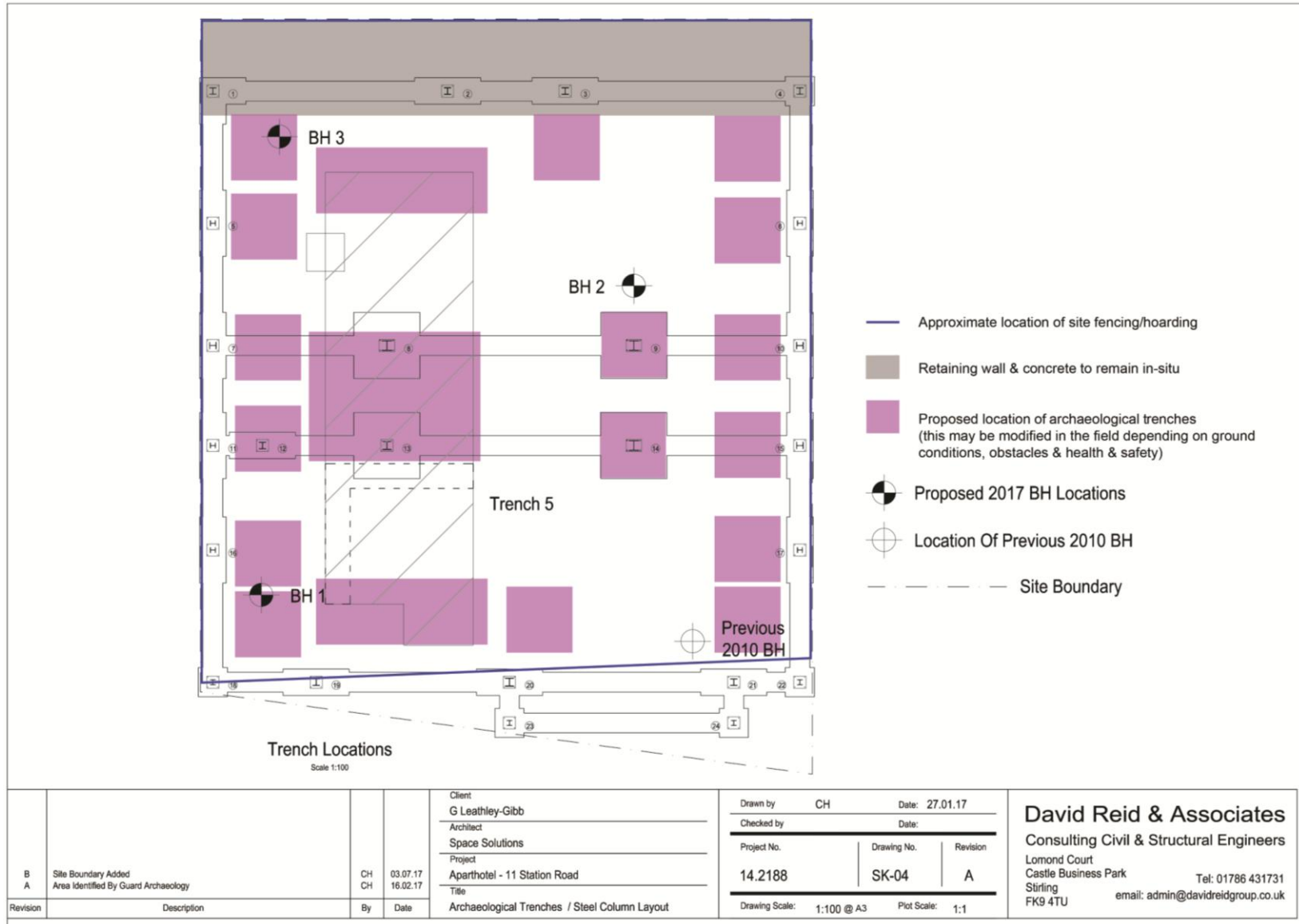


Figure 2: Proposed trench layout

APPENDIX 3: DES Entry

LOCAL AUTHORITY:	Stirling
PROJECT TITLE/SITE NAME:	11 Station Road, Stirling
PROJECT CODE:	1131
PARISH:	Stirling
NAME OF CONTRIBUTOR:	Steven Black
NAME OF ORGANISATION:	Northlight Heritage
TYPE(S) OF PROJECT:	Excavation
NMRS NO(S):	NS79SE 942
SITE/MONUMENT TYPE(S):	Three ditches (possibly late medieval/early post-medieval)
SIGNIFICANT FINDS:	Three relatively large ditches & varied material culture assemblage including a gold & sapphire ring
NGR (2 letters, 8 or 10 figures)	NS 79715, 93575
START DATE (this season)	3 rd July 2017
END DATE (this season)	29 th August 2017
PREVIOUS WORK (incl. DES ref.)	Evaluation by GUARD 2016 (DES Volume 17)
MAIN (NARRATIVE) DESCRIPTION: (May include information from other fields)	An archaeological excavation was undertaken at 11 Station Road, Stirling on behalf of Gillian Leathley-Gibb in relation to the proposed development of a site which currently sits derelict. The work was conducted between 3 rd July and 29 th August 2017. The excavation followed on from a previous unfinished phase of strip, map and sample excavation undertaken in 2016 which uncovered a large linear ditch, running in a broadly north-east to south-west direction. The current phase of works continued excavation of the previously identified ditch whilst also investigating the remainder of the development area. This showed that there were up to three ditches present in the southern part of the development area, all running broadly north-east to south-west although two showed signs of curving to the south. A variety of material culture was recovered including pottery, dressed stone, metal and animal bone which tentatively identified the ditches as late medieval and/or early post-medieval in date. No archaeological features were recovered from the northern part of the development area.
PROPOSED FUTURE WORK:	Post-excavation analysis & watching brief
CAPTION(S) FOR ILLUSTRS:	n/a
SPONSOR OR FUNDING BODY:	Gillian Leathley-Gibb
ADDRESS OF MAIN CONTRIBUTOR:	Northlight Heritage, Studio 406, South Block, 64 Osborne Street, Glasgow G1 5QH
EMAIL ADDRESS:	northlight@yorkat.co.uk
ARCHIVE LOCATION (intended/deposited)	National Monuments Record for Scotland (intended)