

Fig. 2. Location of catalogued sites, find spots and listed buildings (1:10 000)

© ASWYAS 2005.  
 Archaeological Services W Y A S  
 PO Box 30, Nephaw Lane South, Morley, LS27 0UG  
 Tel: 0113 383 7500 Fax: 0113 383 7501

Based on Ordnance Survey digital mapping with the permission of the controller of Her Majesty's Stationary Office.  
 © Crown Copyright.  
 Archaeological Services W Y A S: licence LA076406, 2005.

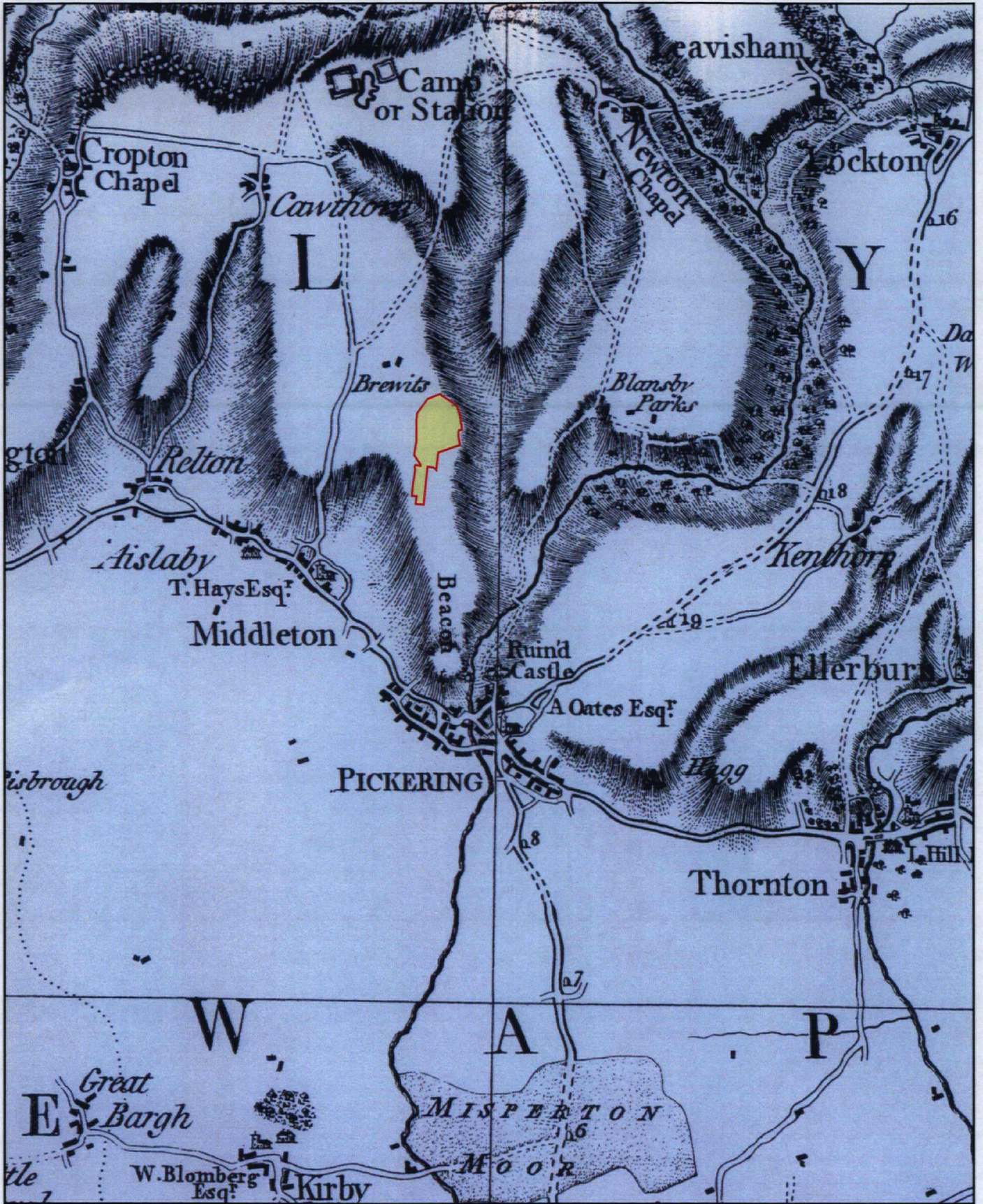


Fig. 3. Jefferys, T., 1775, Map of Yorkshire, showing the approximate location of the proposed extraction area, 1 inch to 1 mile (not to scale)

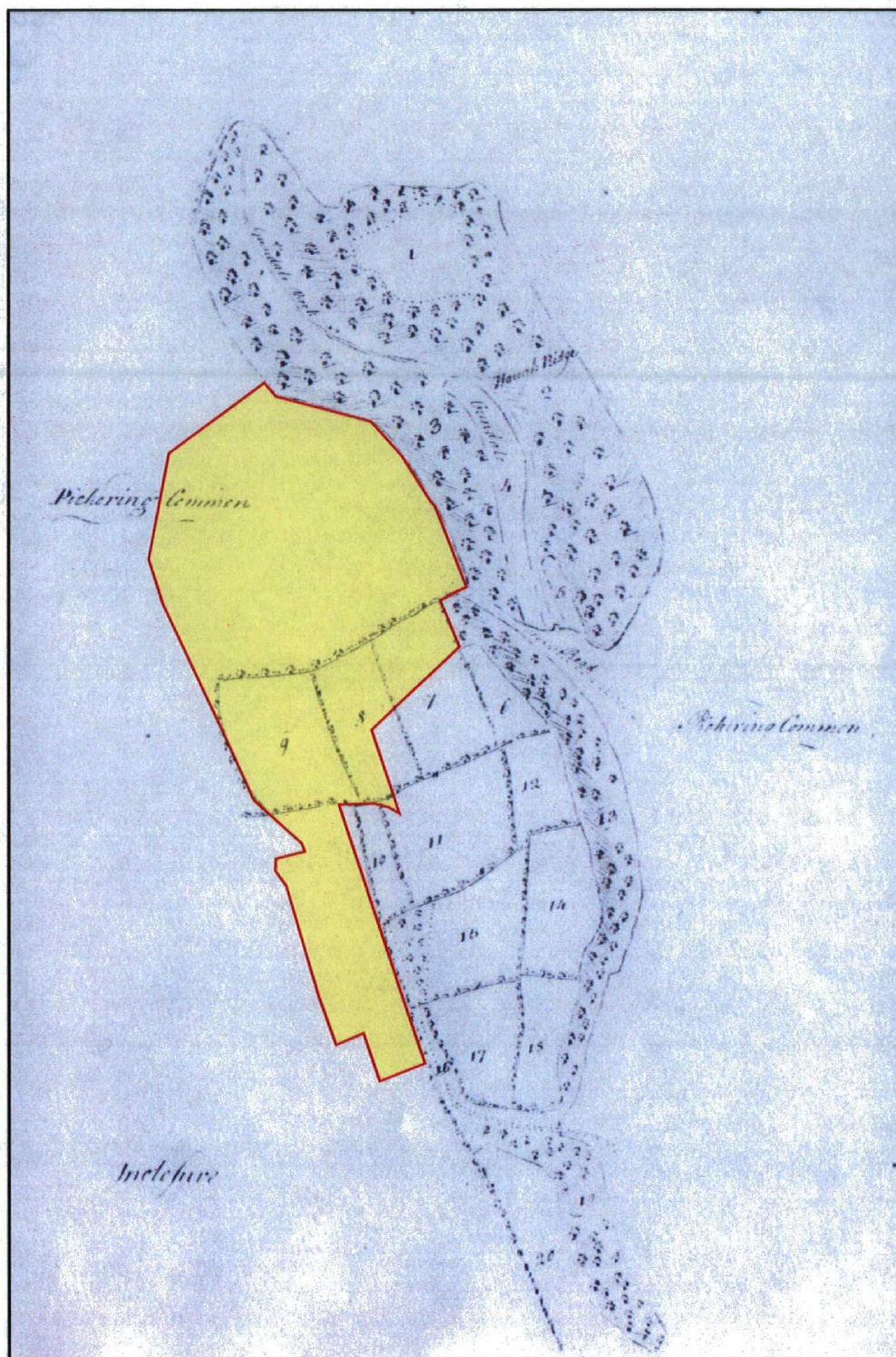


Fig. 4. Survey of the Pickering District, 1777, North Yorkshire Archives Ref: MIC 1205 Frame 1644

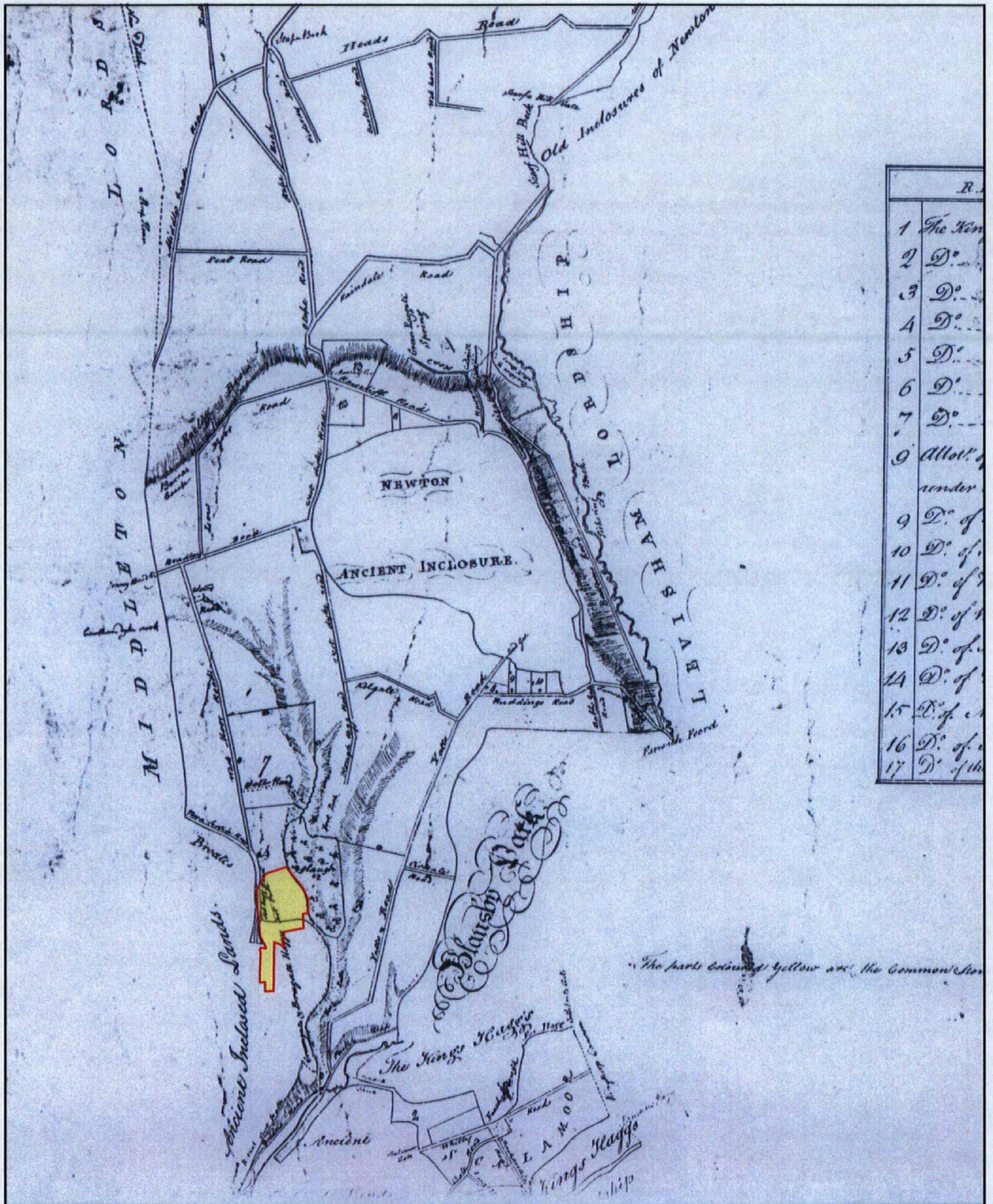


Fig. 5. Plan of the High Commons of Pickering and Newton with the Public and Private Roads, 1789, North Yorkshire Archives Ref: MIC 1540

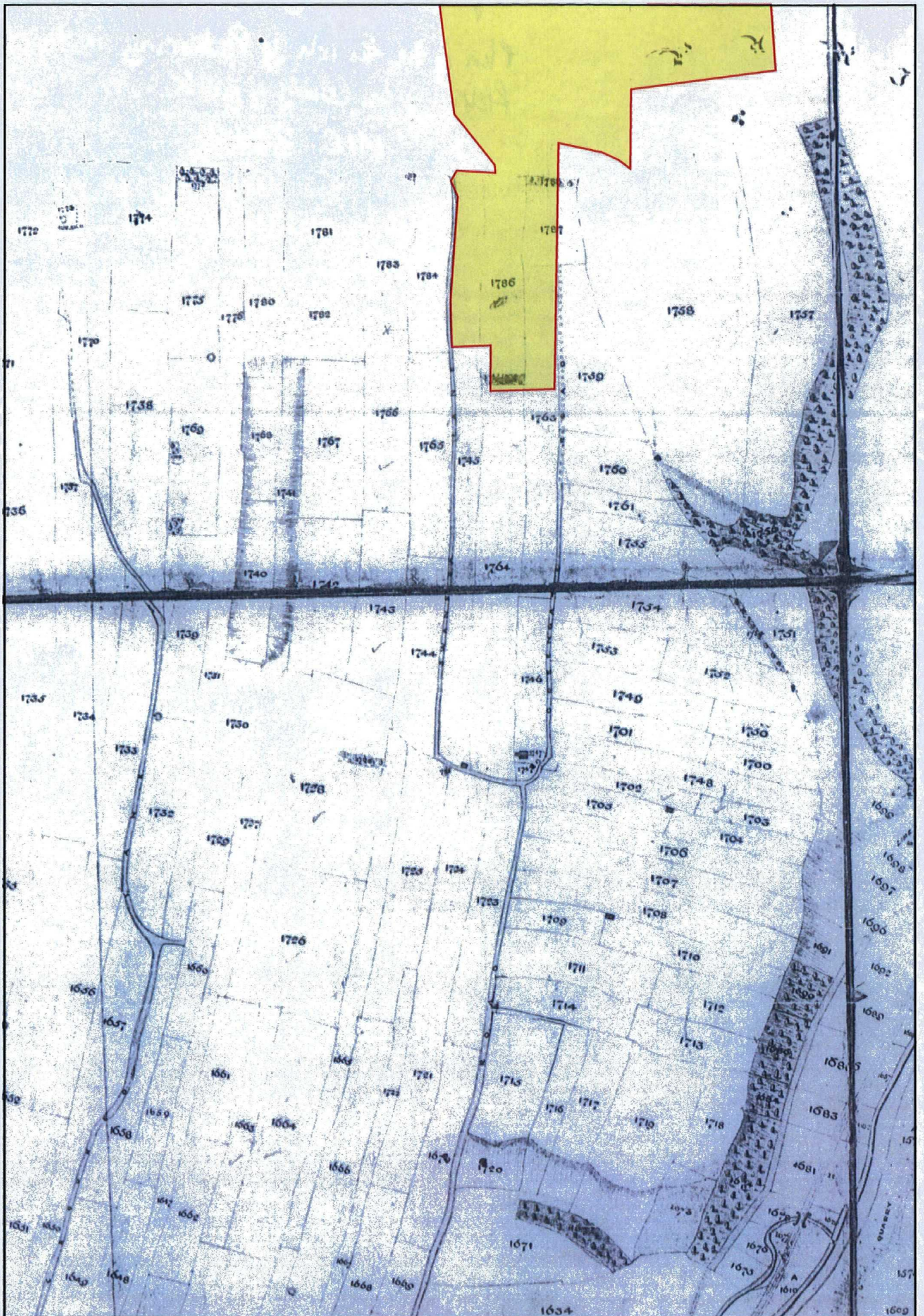


Fig. 6. Pickering Tithe Award Map, 1838, North Yorkshire Archives Ref: MIC 3442

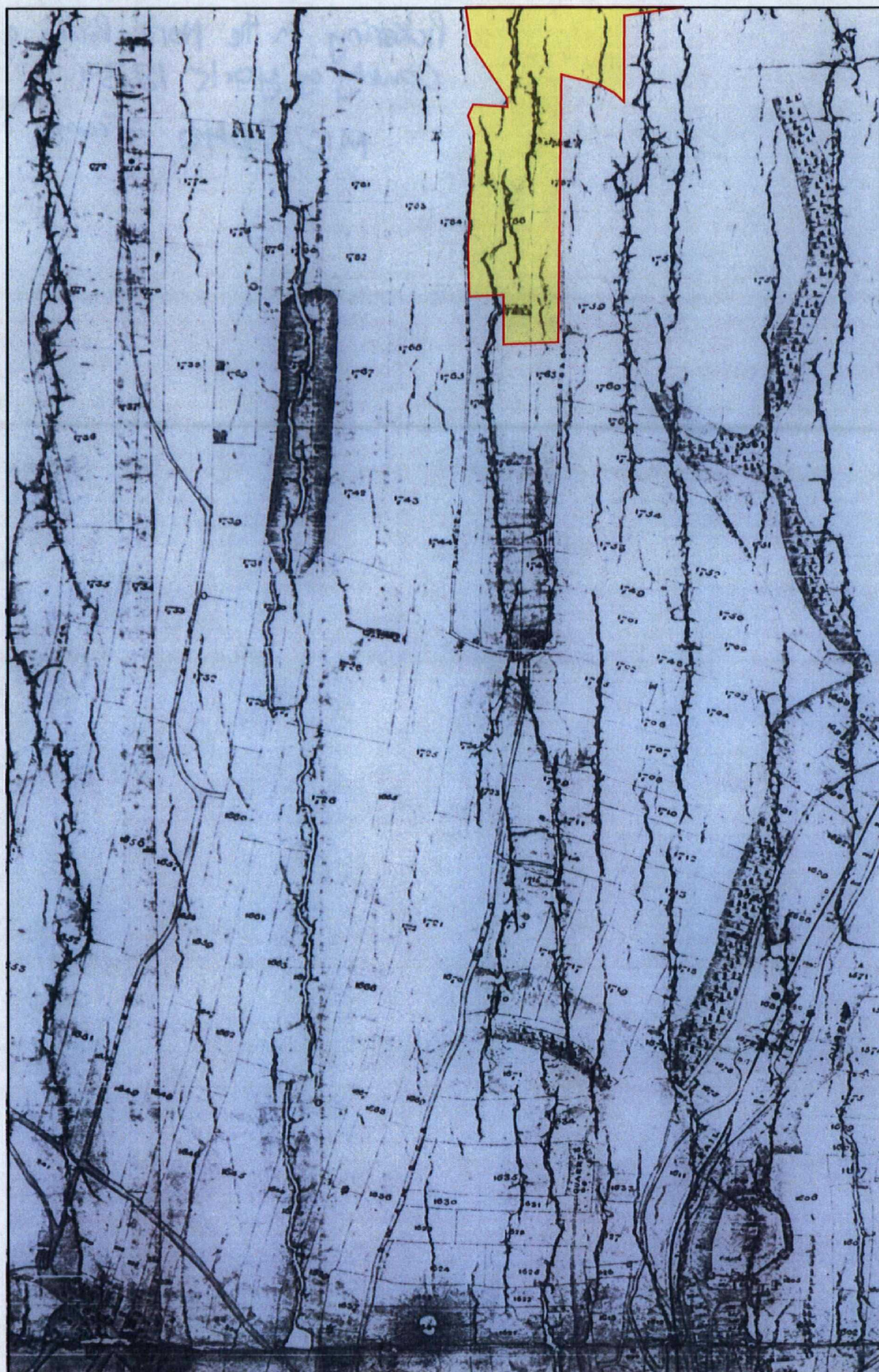


Fig. 7. Map of the Parish of Pickering, 1839, North Yorkshire Archives Ref: MIC 2046  
Frame 125



Figure 8. An extract from the O.S. Map of 1854, first edition, sheets 75 and 91, 6 inch to 1 mile.



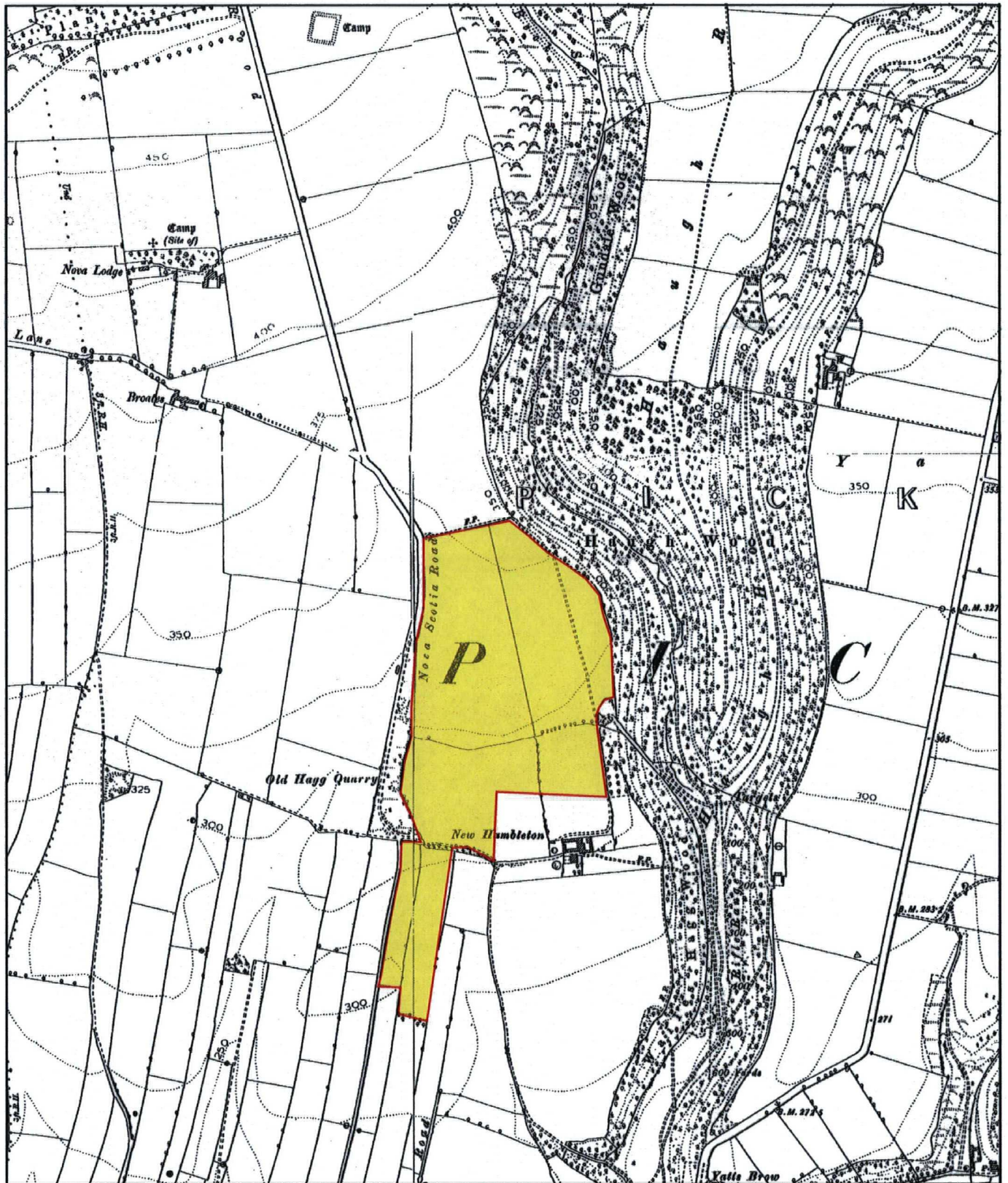


Figure 9. An extract from the O.S. Map of 1893, second edition, sheets 75SE and SW and 91NE and NW, 6 inch to 1 mile.

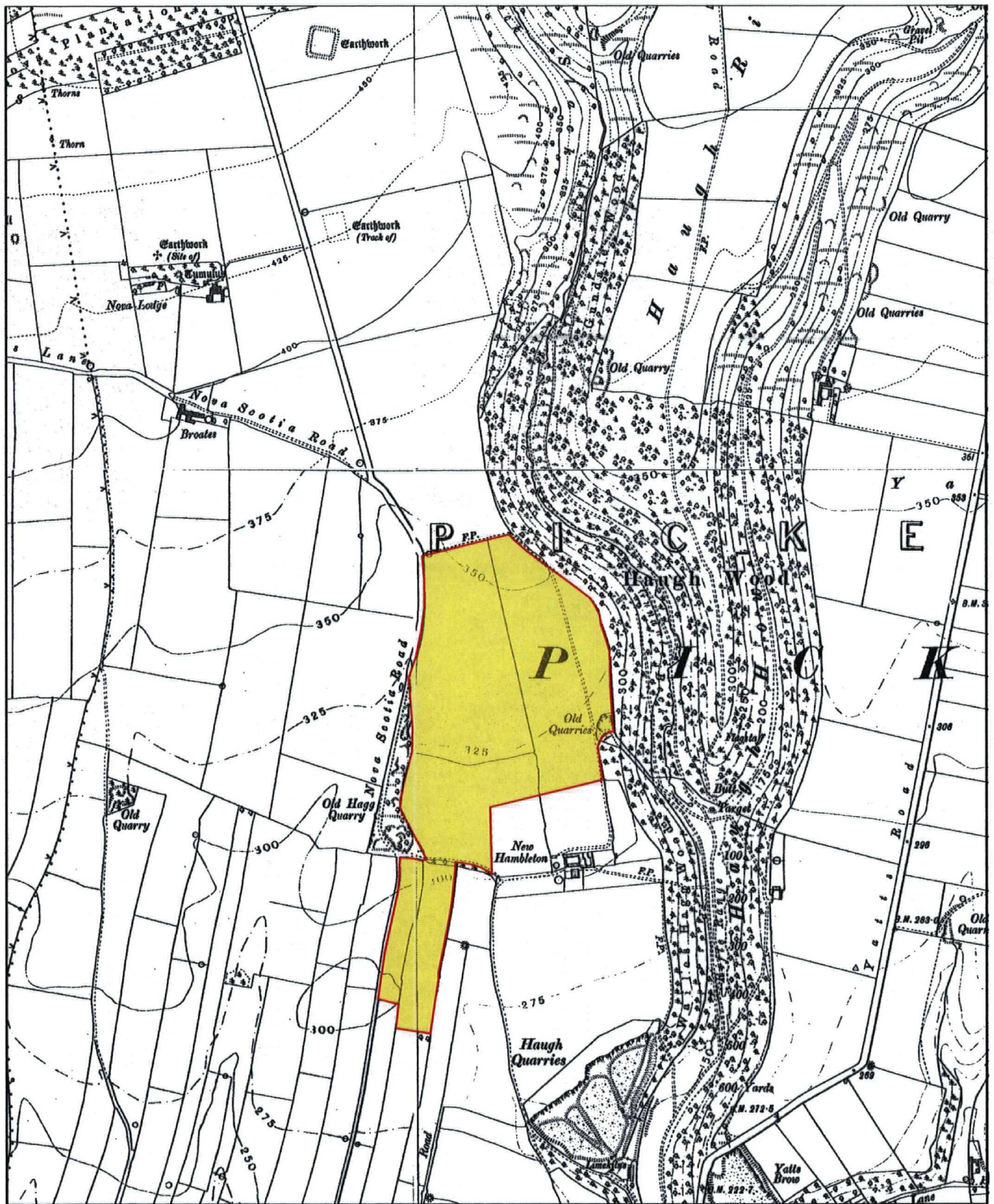


Figure. 10. An extract from the O.S. Map of 1914., sheets 75SE and SW and 91NE and NW, 6 inch to 1 mile.

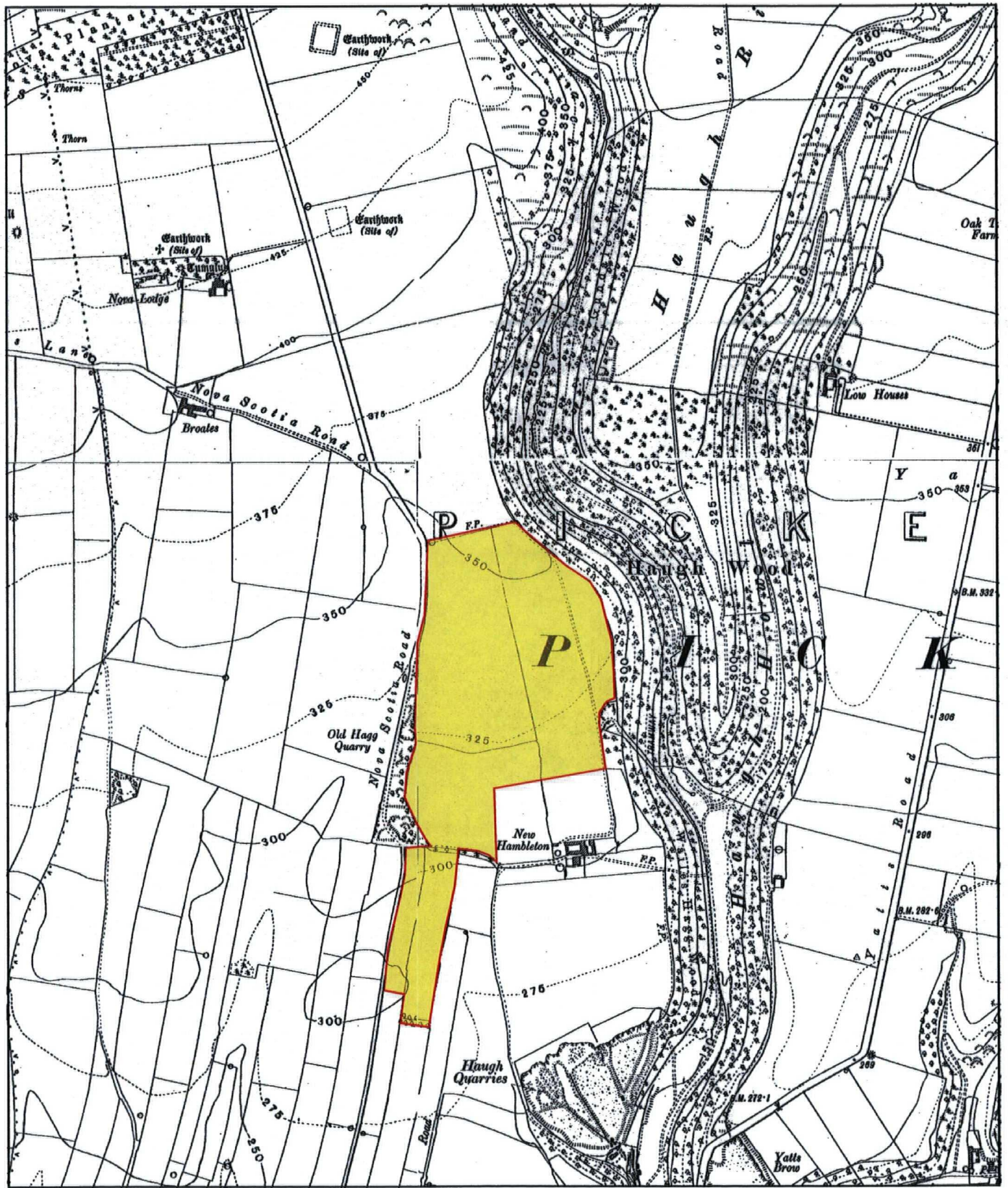


Figure. 11. An extract from the O.S. Map of 1930, sheets 75SE and SW and 91NE and NW, 6 inch to 1 mile.

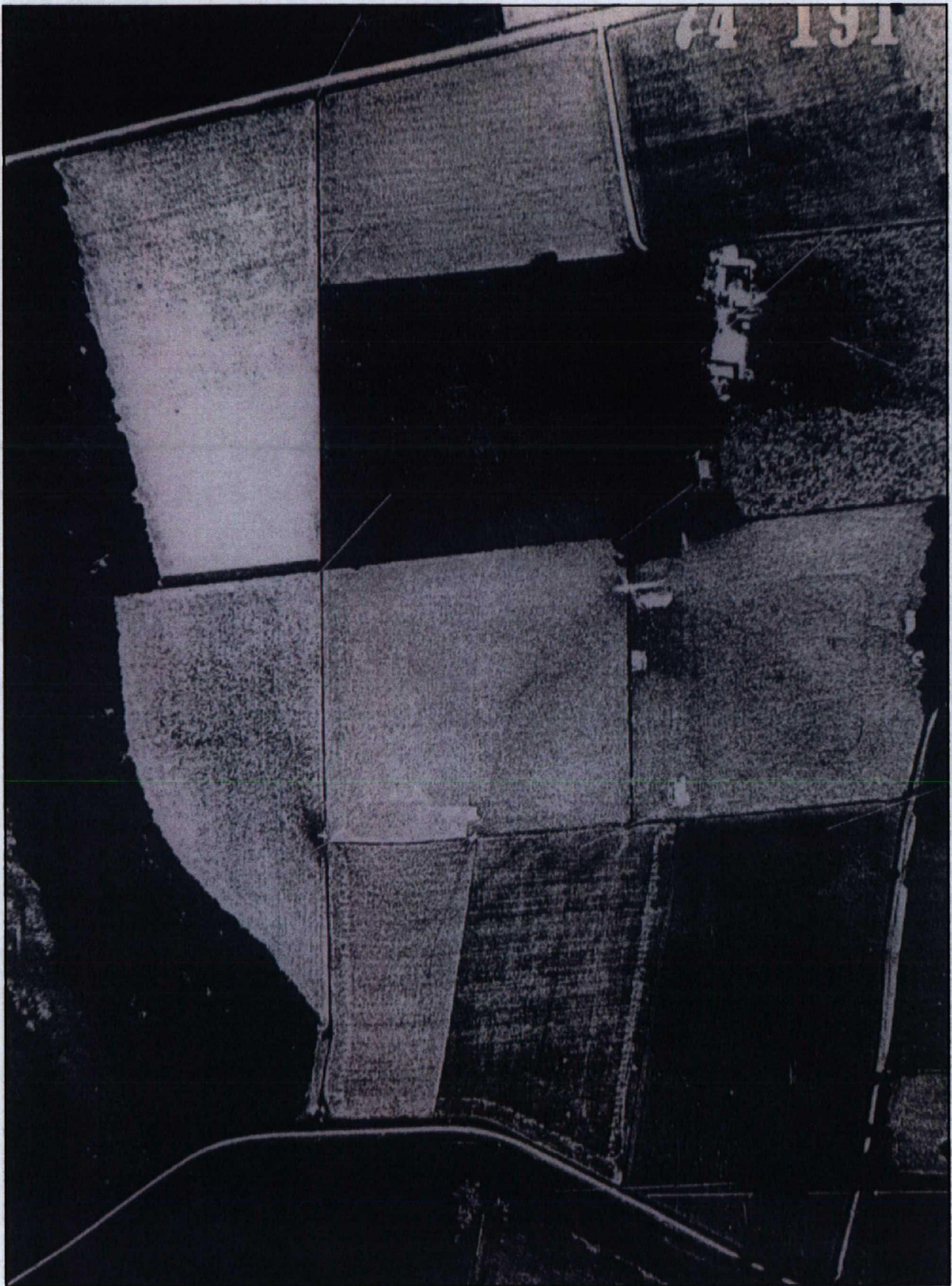


*Plate 1. Newbridge Quarry Extraction Area in 1972 (AP ANY 110/72/142), showing the proposed extraction area (Copyright North Yorkshire Heritage Unit)*

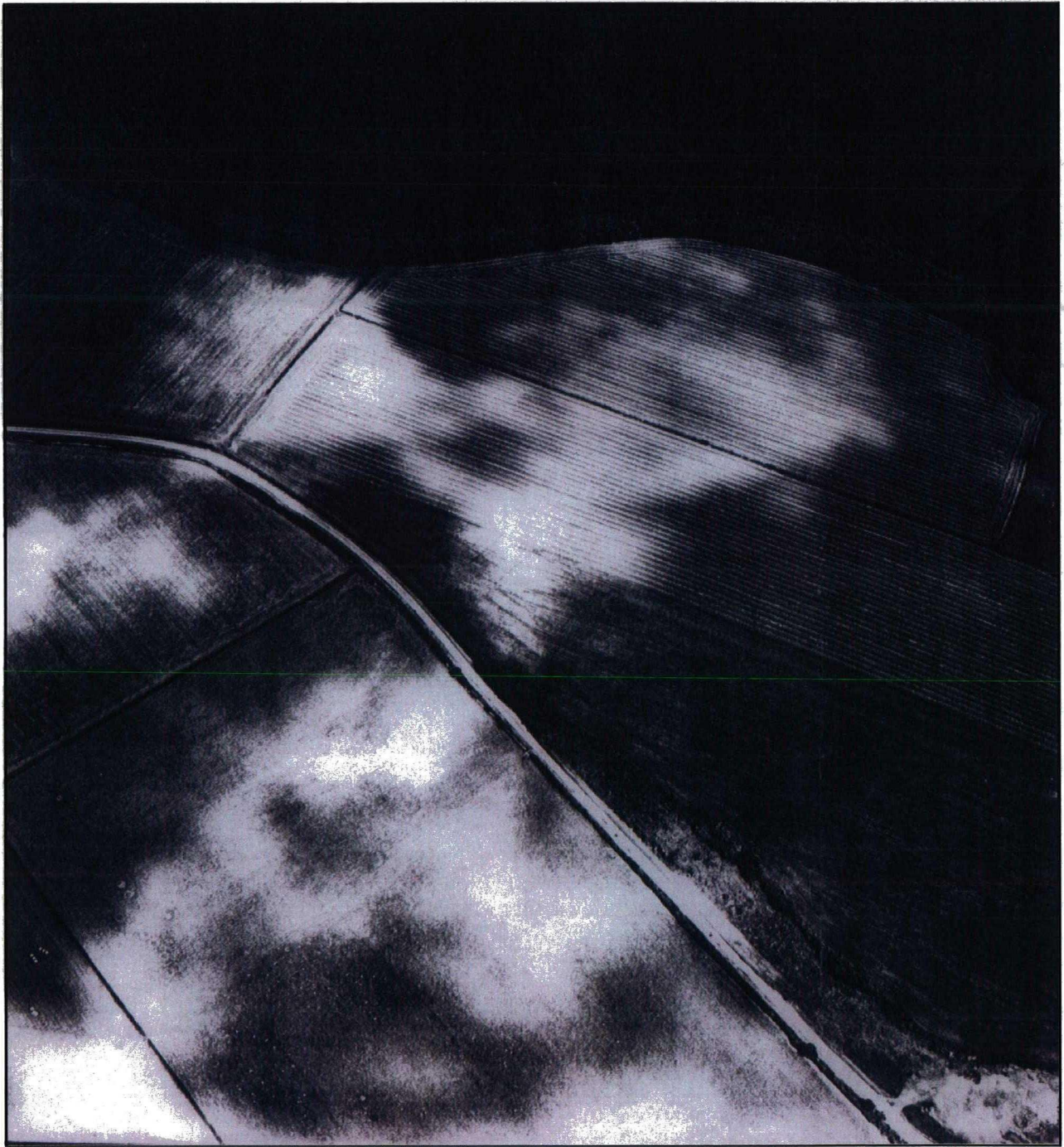


*Plate 2. Aerial photograph of archaeological features (AP CUC CMT 37), c.400m west of Proposed Extraction Area. Cat. nos 15, 18, 19 and 22 (Copyright Cambridge University)*

◁N



*Plate 3. Crop Mark Enclosure, c. 950m Northwest of the Proposed Extraction Area. Cat. No. 7  
(Copyright Ordnance Survey)*



*Plate 4. Aerial photograph of archaeological features within the proposed extraction area (AP NMR 17029/28), Cat. no. 70*