

Figure 1: Site location plan

COPYRIGHT



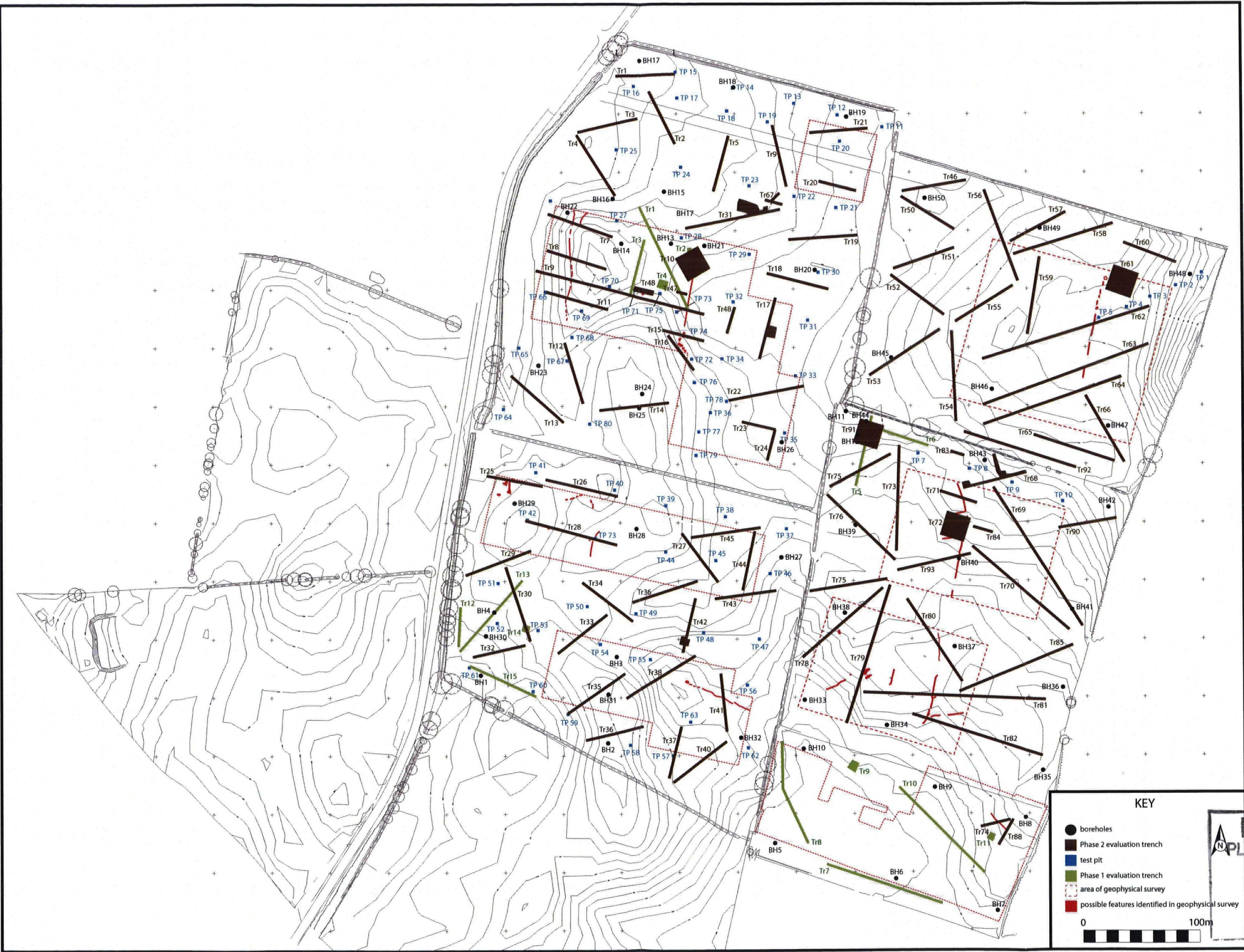
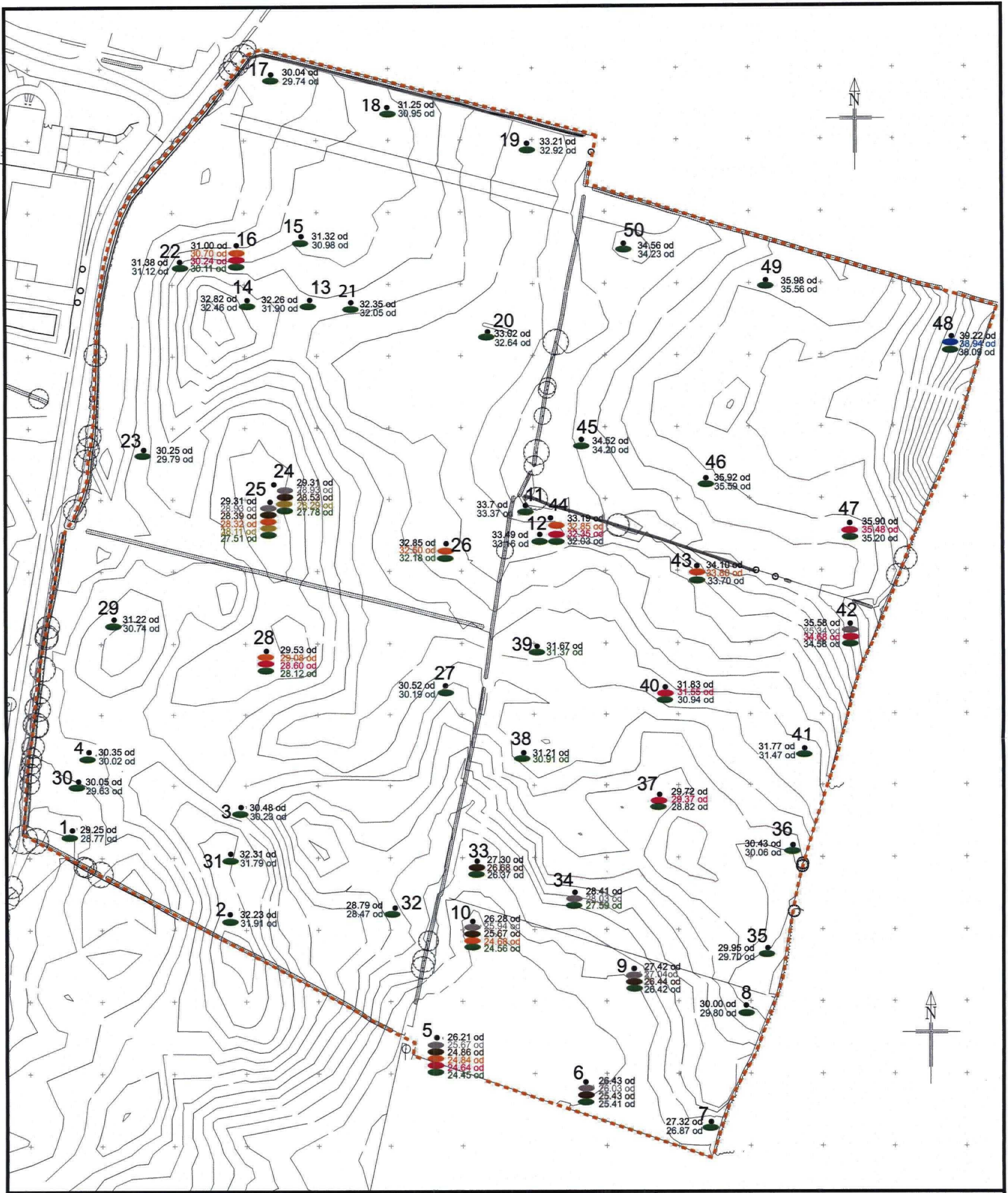


Figure 2: Site showing all Phase 1 and 2 works



KEY

- Borehole
- Grey sandy/silty clay
- Dark brown organic clay
- Sandy clay
- Peat
- Clayey sand/sand
- Gravel
- Glacial till
- Development Area



RECEIVED
 20 SEP 2006
 100 HILL
 SCARBOROUGH

COMPLIANT

Figure 3: Borehole survey

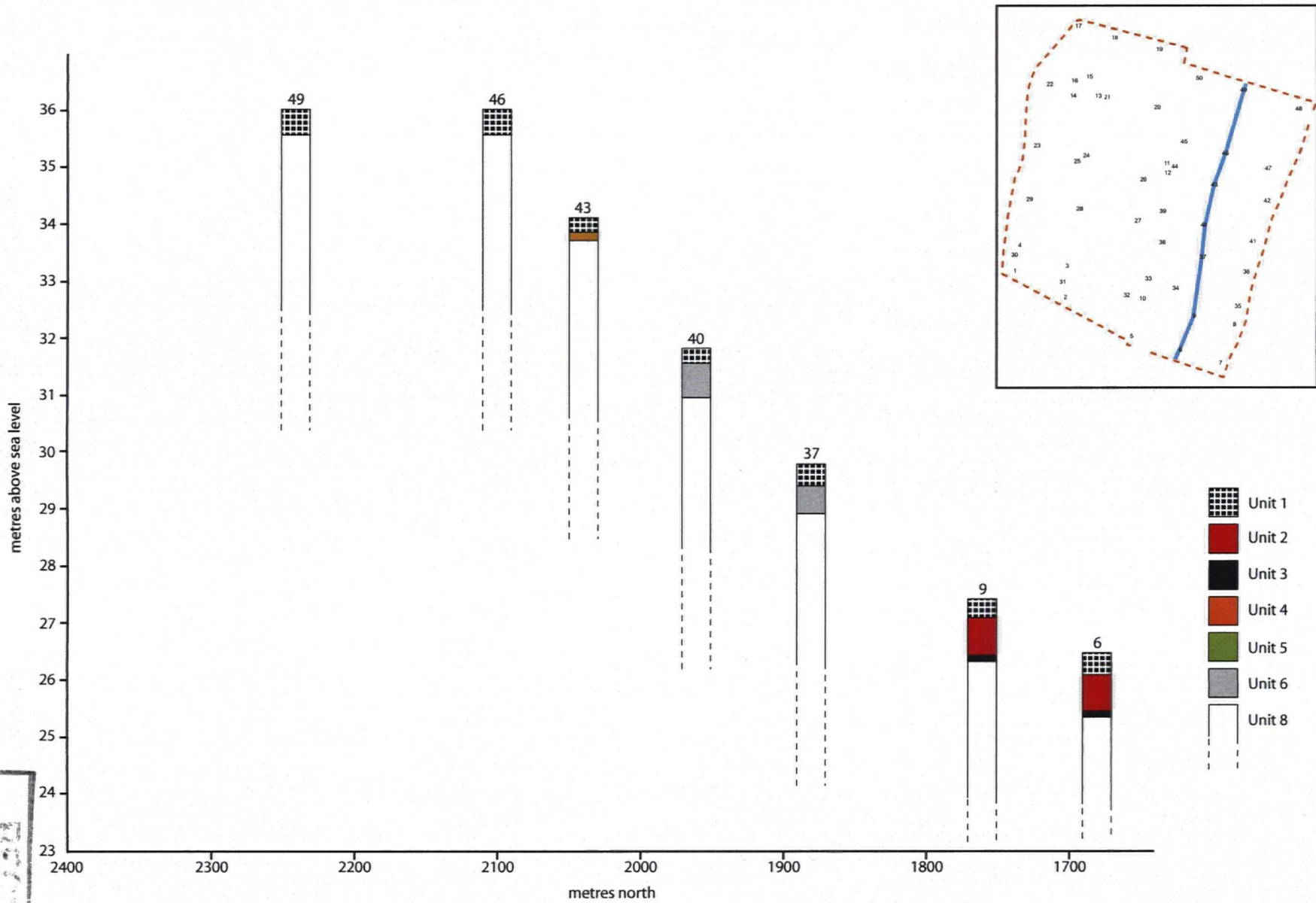


Figure 4: Section through boreholes 49-6

RECEIVED
 20 SEP 2006
 JOYCE FALL
 SCARBOROUGH

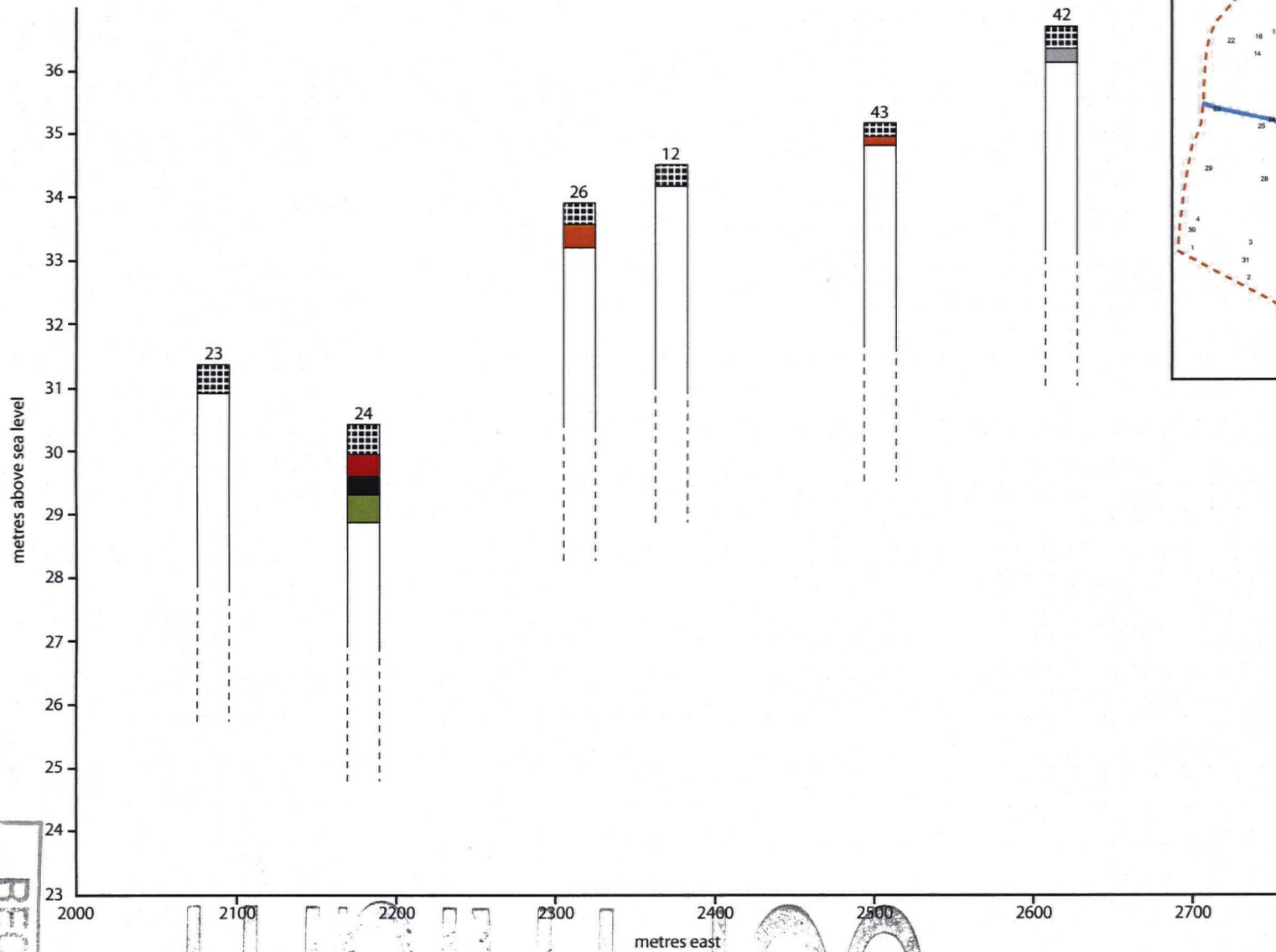
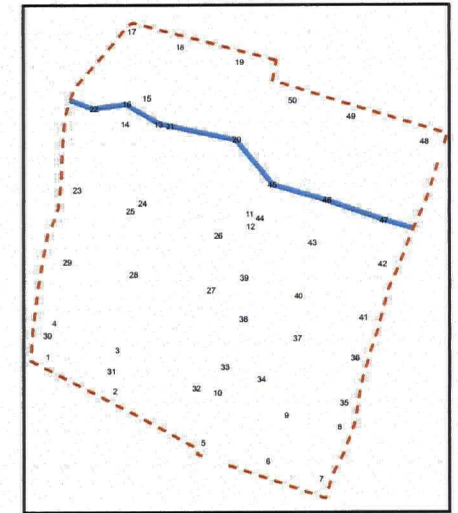
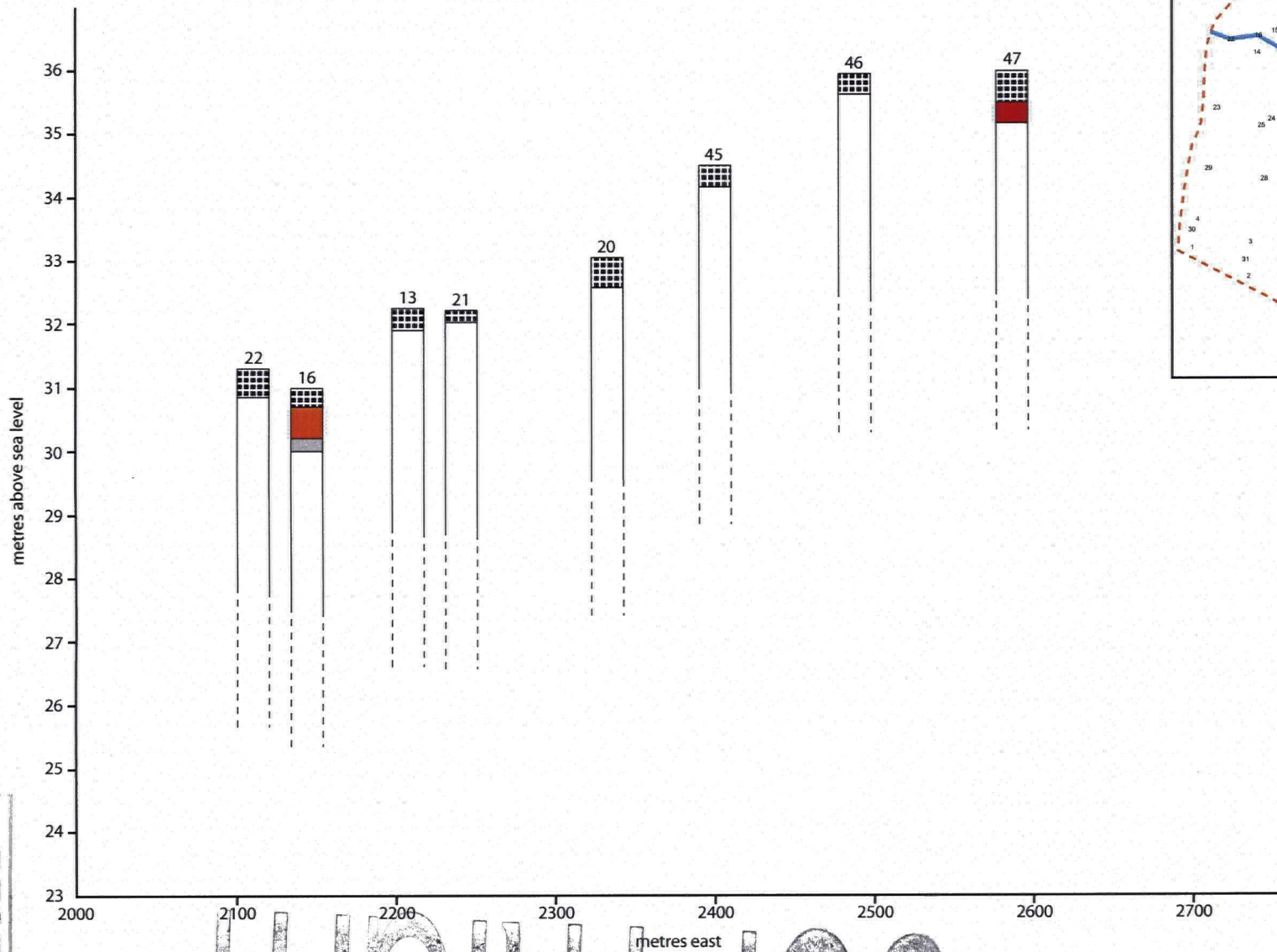


Figure 5: Section through boreholes 23-42

RECEIVED
PLANNING
TOWN HALL
SCARBOROUGH
20 SEP 2006



-  Unit 1
-  Unit 2
-  Unit 3
-  Unit 4
-  Unit 5
-  Unit 6
-  Unit 8

Figure 6: Section through boreholes 22-47

RECEIVED
PLANNING SERVICES

20 SEP 2006

TOWN HALL
SCARBOROUGH

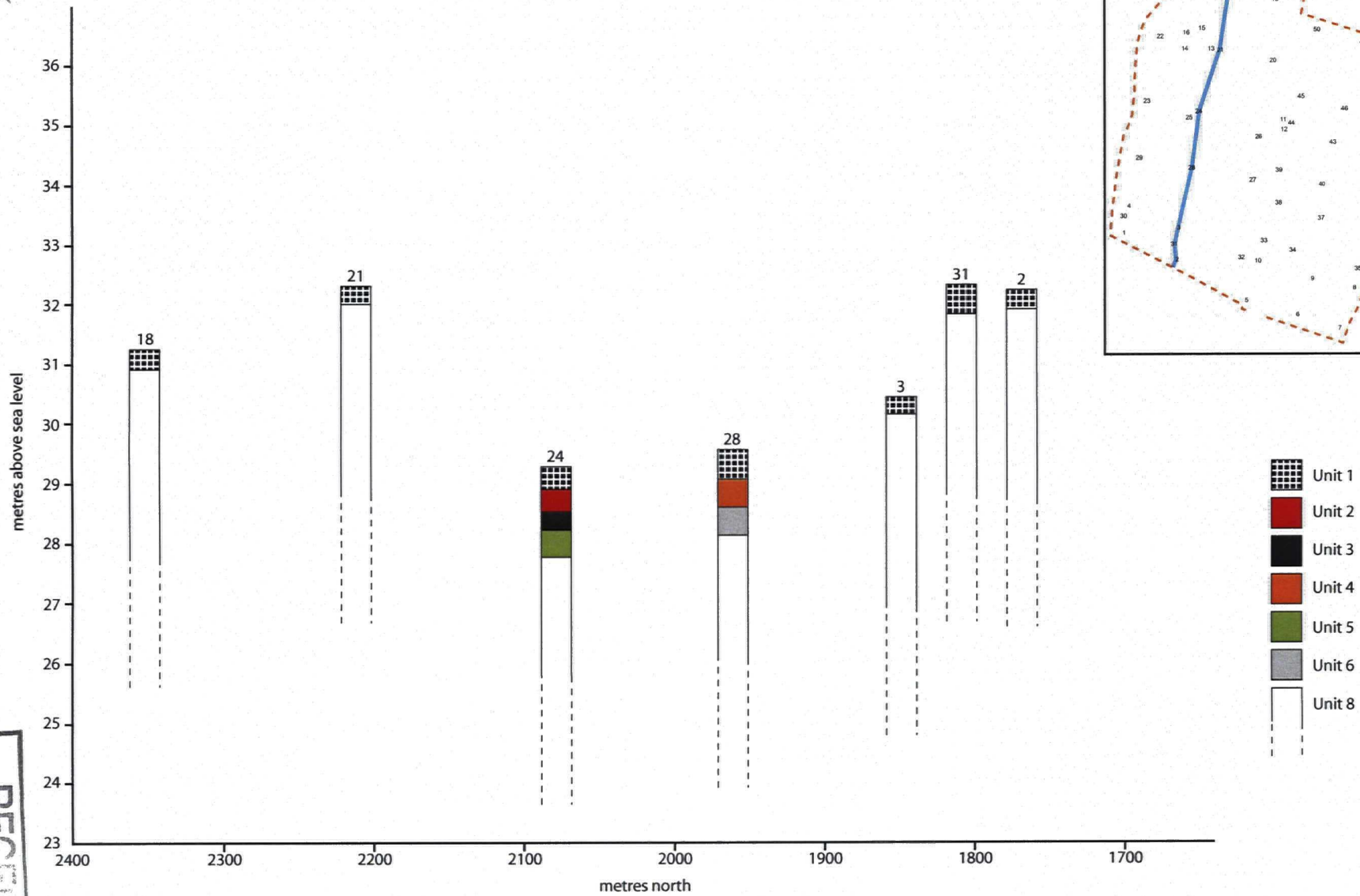


Figure 7: Section through boreholes 18-2

RECEIVED
 PLANNING
 20 SEP 2006
 TOMMY
 SCOTT



Figure 8: Glacial till contours

COPYRIGHT

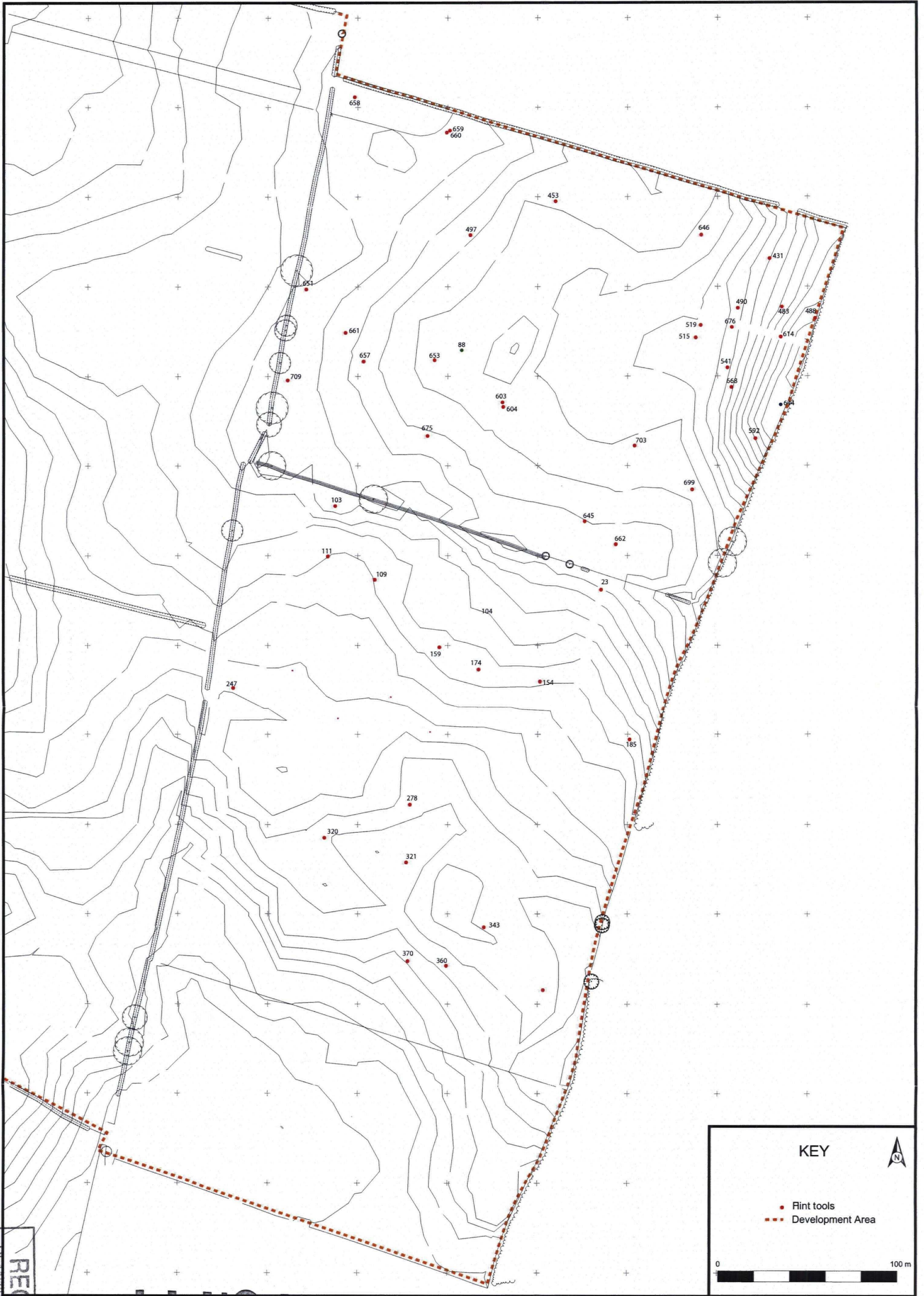


Figure 10: Lithic tools recovered by field-walking survey

RECEIVED
 PLANNING SERVICES
 20 SEP 2006
 TOWN HALL
 SCARBOROUGH

COPYRIGHT

COPYRIGHT

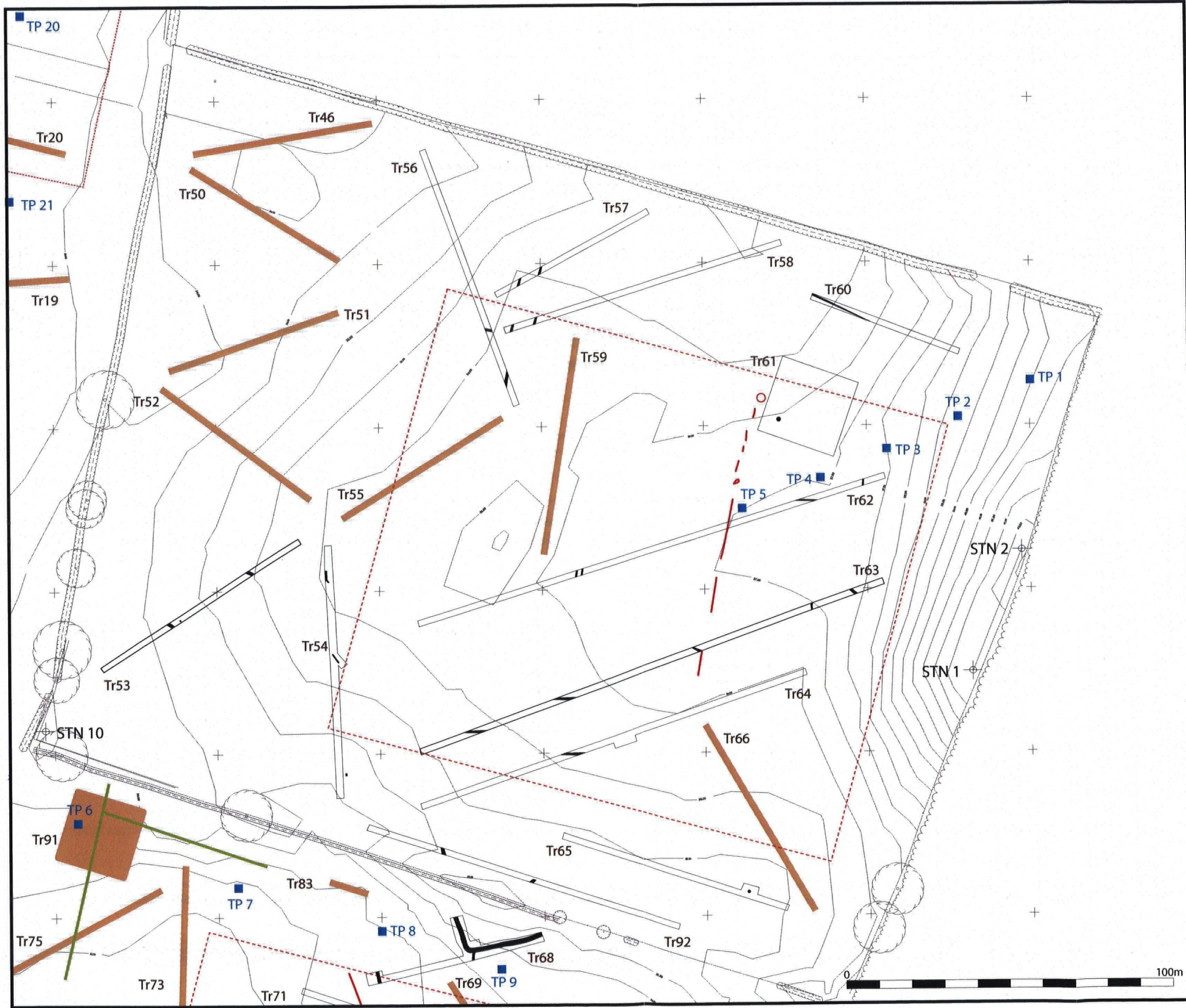


Figure 11: North east field showing trenches containing features

KEY

- evaluation trench containing features, Phase 2
- evaluation trench without features, Phase 2
- test pit
- previous evaluation trench, Phase 1
- area of geophysical survey
- possible features identified in geophysical survey

PLANNING SERVICES

20 SEP 2006

TOWN HALL
SCARBOROUGH

