

NYCC HER	
SNY	11282
ENY	3531-3541
CNY	
Parish	Linear - A19 (Roads)
Rec'd	1993

Shipton by Beningbrough Bypass

Archaeological Investigations

Volume 2

May 1993



**West Yorkshire
Archaeology Service**

© WYAS 1993

West Yorkshire Archaeology Service
14 St John's North, Wakefield WF1 3QA

WYAS R131; 13th May 1993



Contents

Maps

- Map 1: Land-use and Drainage
Map 2: Archaeological Evidence
-

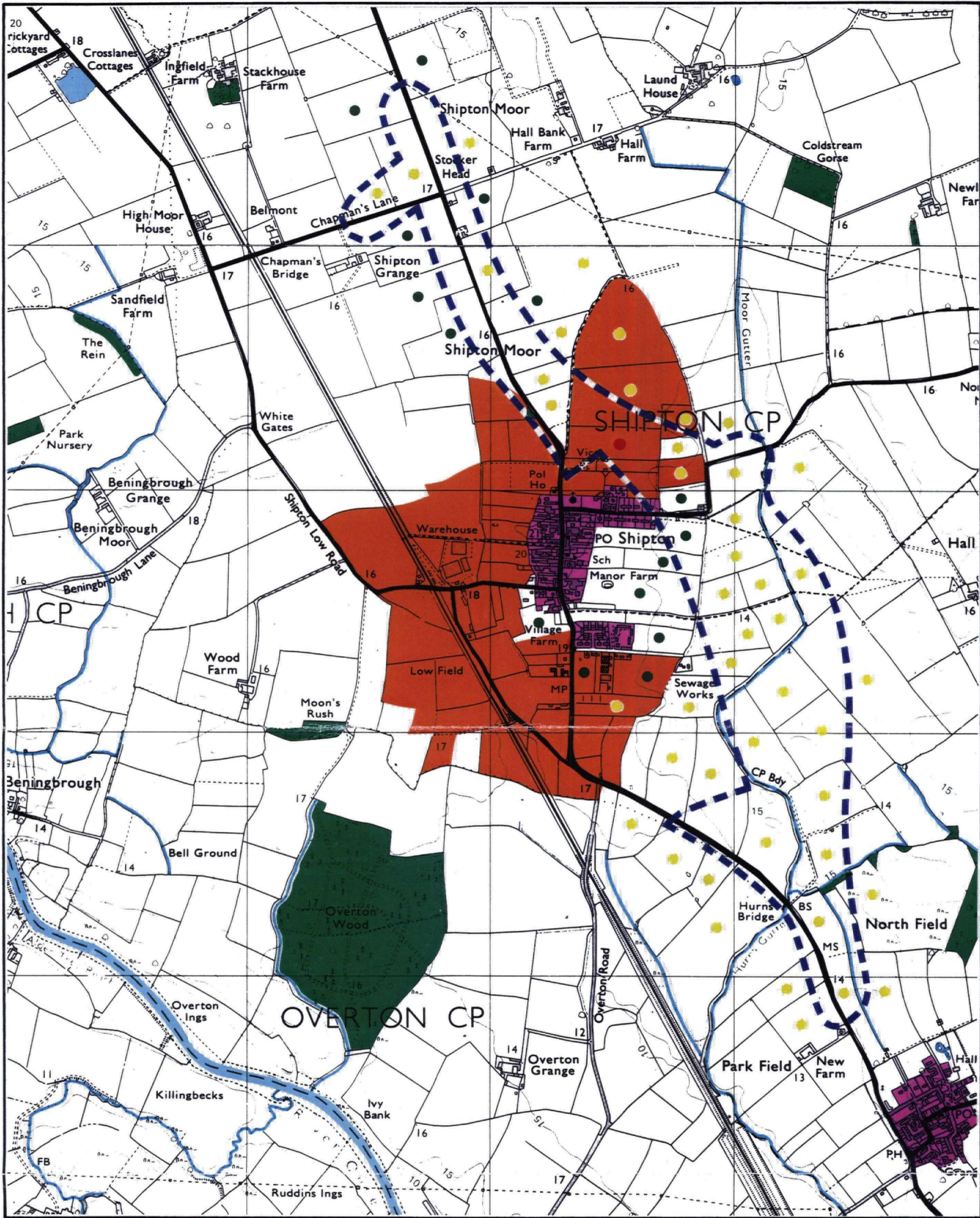
Figures

- Figure 1: Location of evaluation sites, also showing possible extent of early enclosure
Figure 2a: Grid location (Audby Field)
Figure 2b: Gradiometer data plots (Audby Field)
Figure 2c: Interpretation plots (Audby Field)
Figure 3a: Grid location (Cropmark site)
Figure 3b: Gradiometer data and interpretation plots (Cropmark site)
Figure 4a: Grid location (Roman road site)
Figure 4b: Resisitivity data plots (Roman road site)
Figure 4c: Interpretation plot (Roman road site)
-

Colour Plots

- Colour Plot 1: Audby Field: Magnetic susceptibility
Colour Plot 2: Fieldwalking results: Flints
Colour Plot 3: Fieldwalking results: Medieval Pottery Sherds
Colour Plot 4: Fieldwalking results: Weight of fired clay
Colour Plot 5: Fieldwalking results: Weight of tile (x10g)
-

MAPS

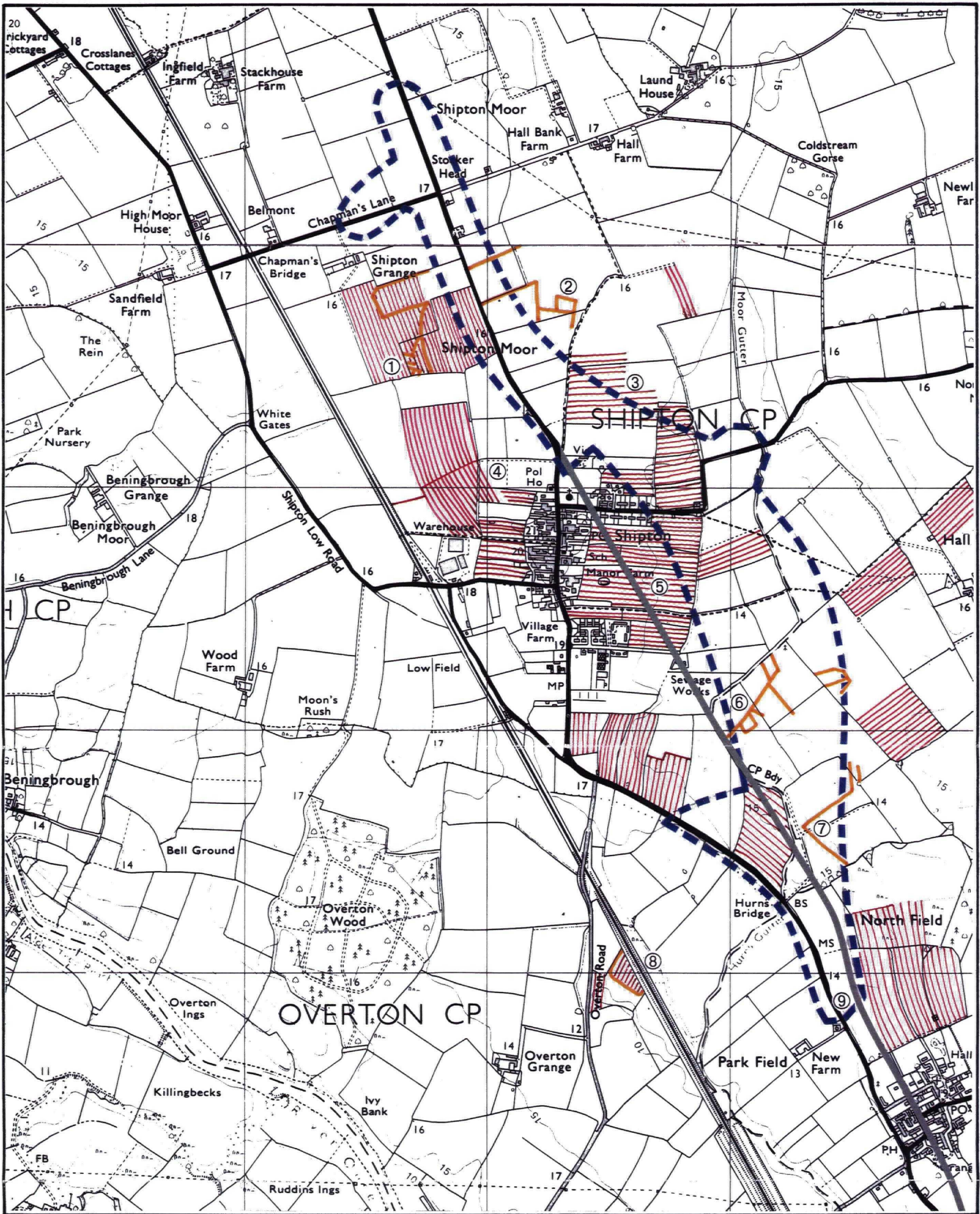






-  Drainage
-  Land enclosed under Act of 1815
-  Woodland — present day
-  Survey area boundary
-  Built-up areas
-  Grass/Pasture
-  Cereal Crop
-  Root Crop

Map 1.

Land-use and Drainage

SHIPTON BY-PASS: Preliminary Archaeological Assessment



-  Conjectured line of Roman Road
-  Ridge and Furrow
-  Survey area boundary
-  Cropmarks from Aerial photography

Map 2.
 Archaeological Evidence
 SHIPTON BY-PASS: Preliminary
 Archaeological Assessment

FIGURES

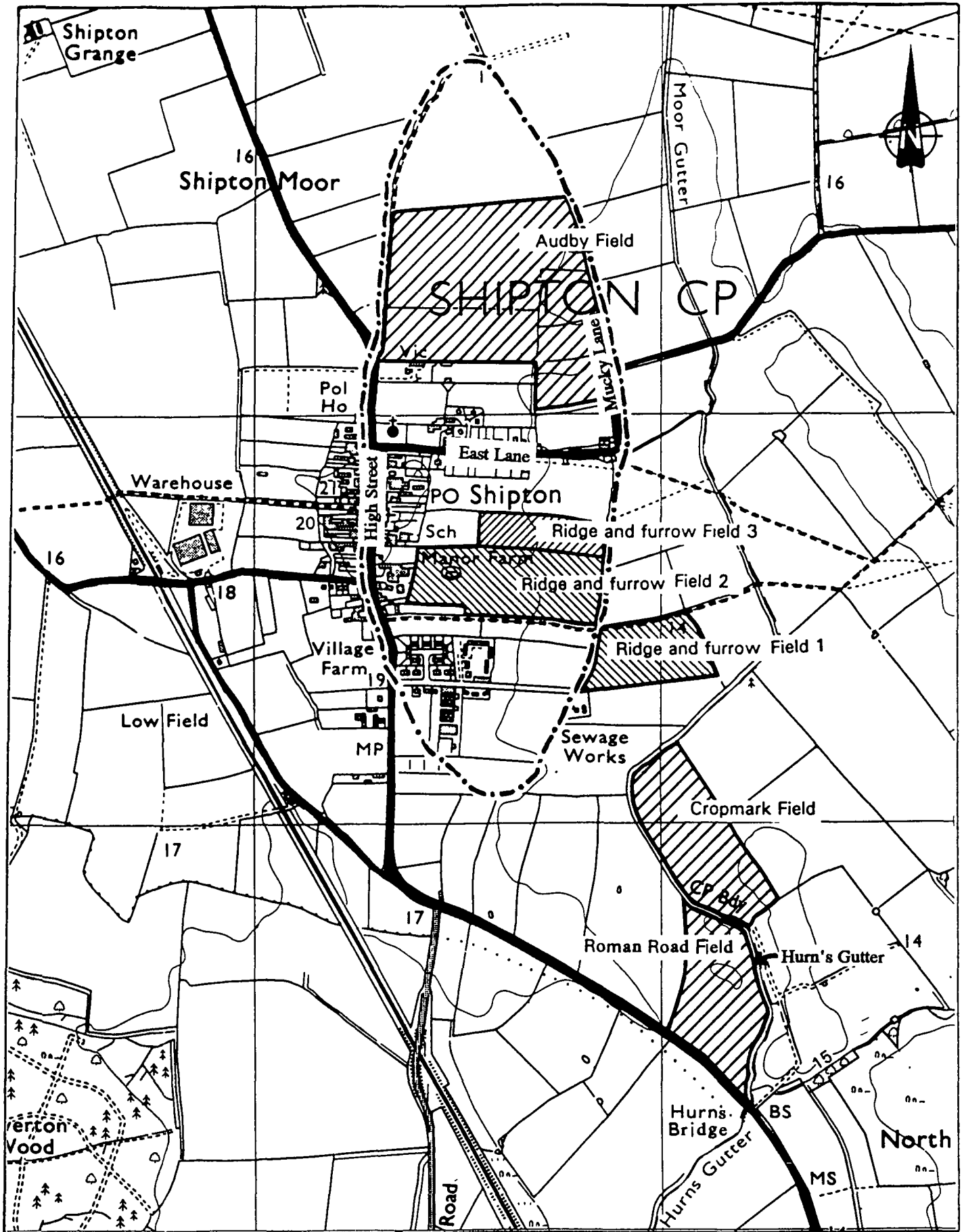


Figure 1: Location of evaluation sites, also showing possible extent of early enclosure

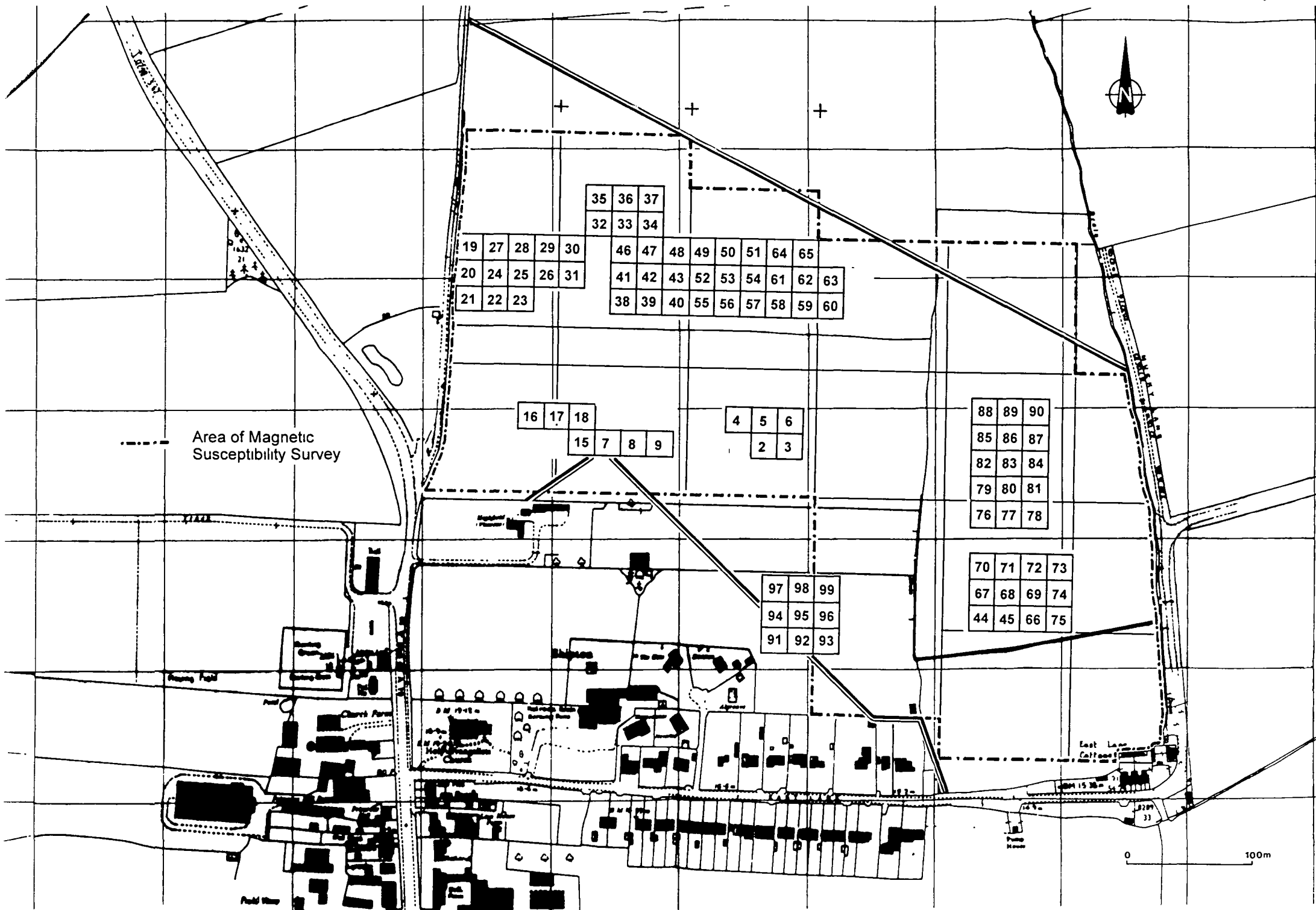


Figure 2a Grid location (Audby Field)

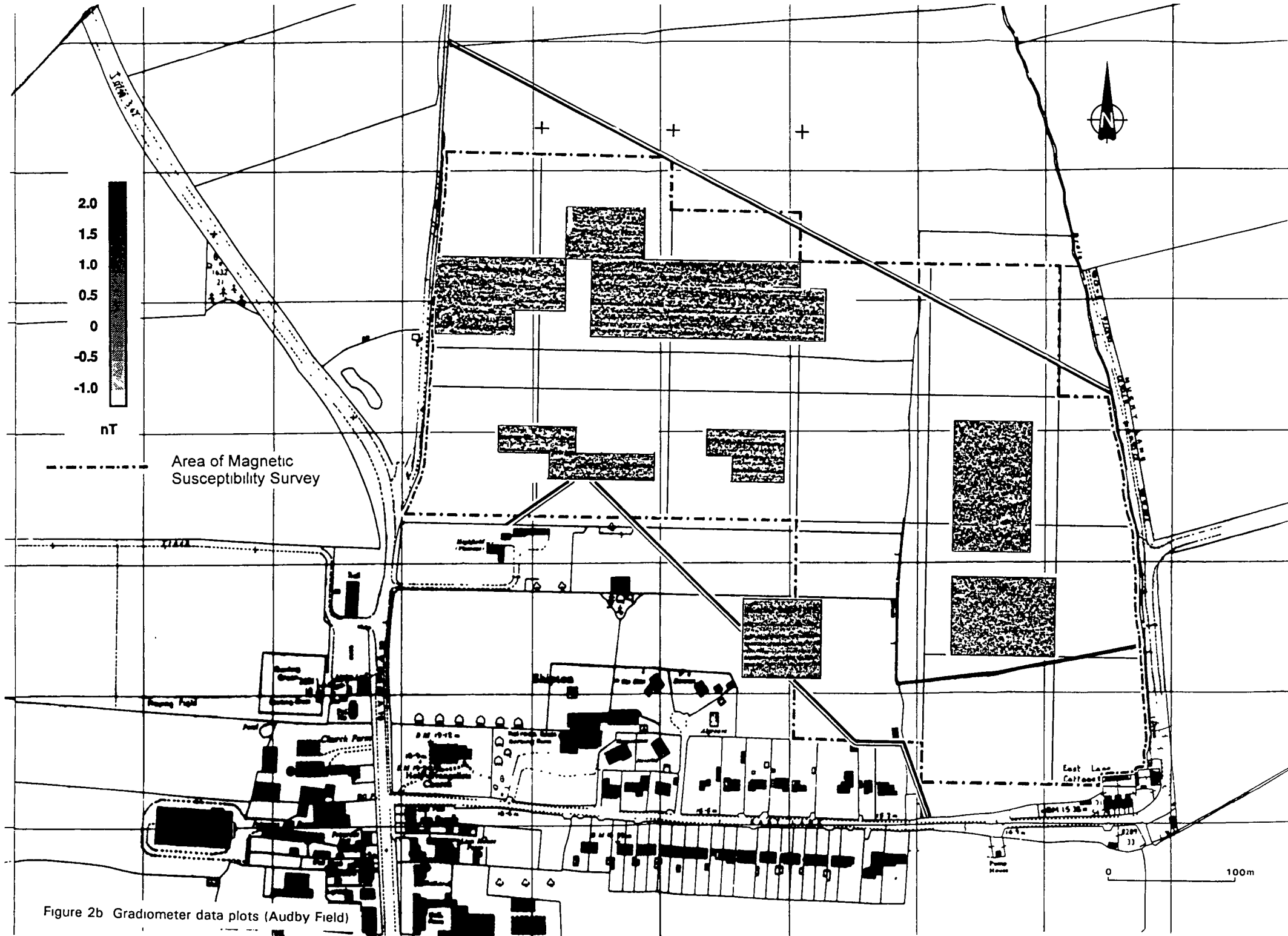


Figure 2b Gradiometer data plots (Audby Field)

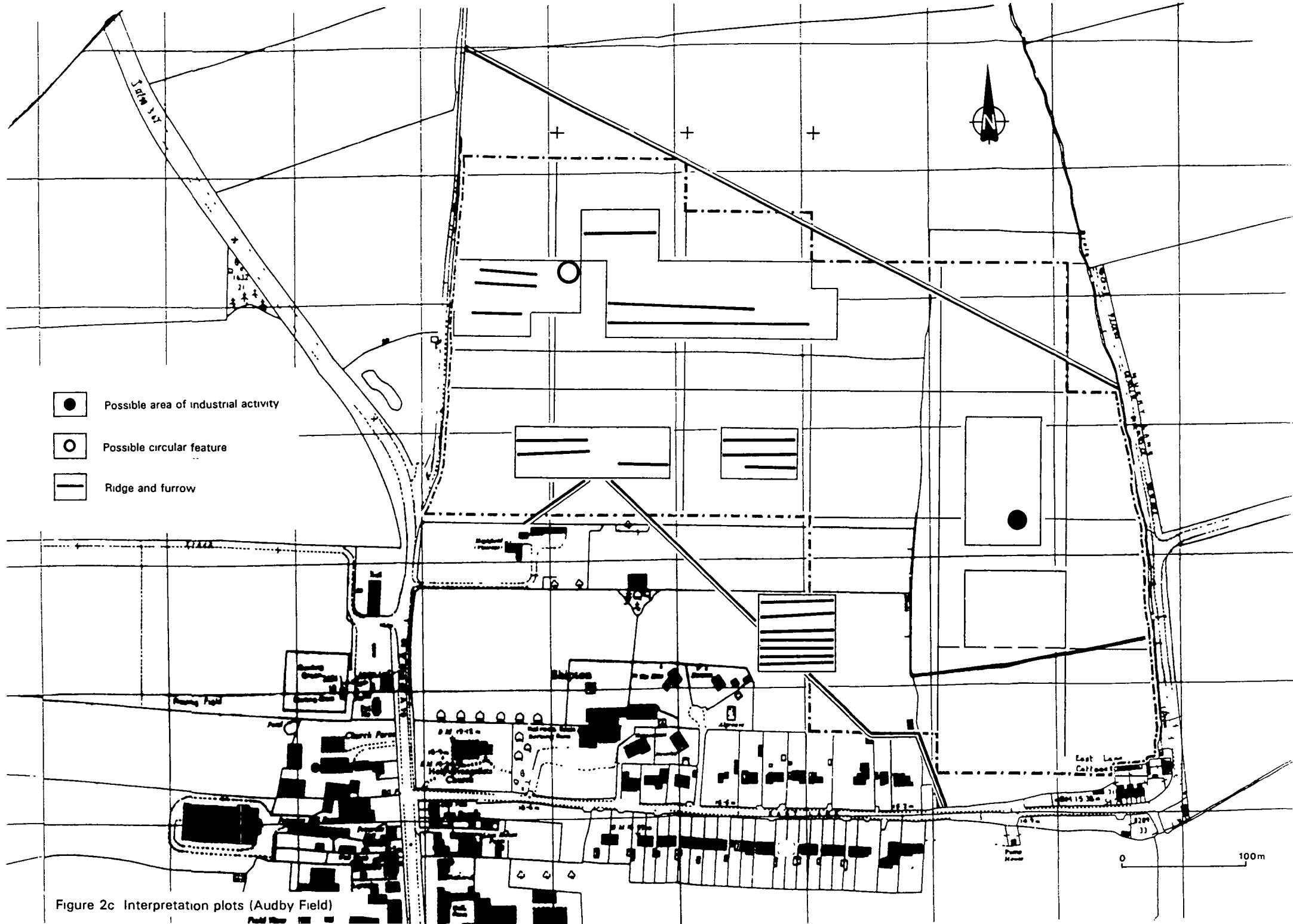


Figure 2c Interpretation plots (Audy Field)

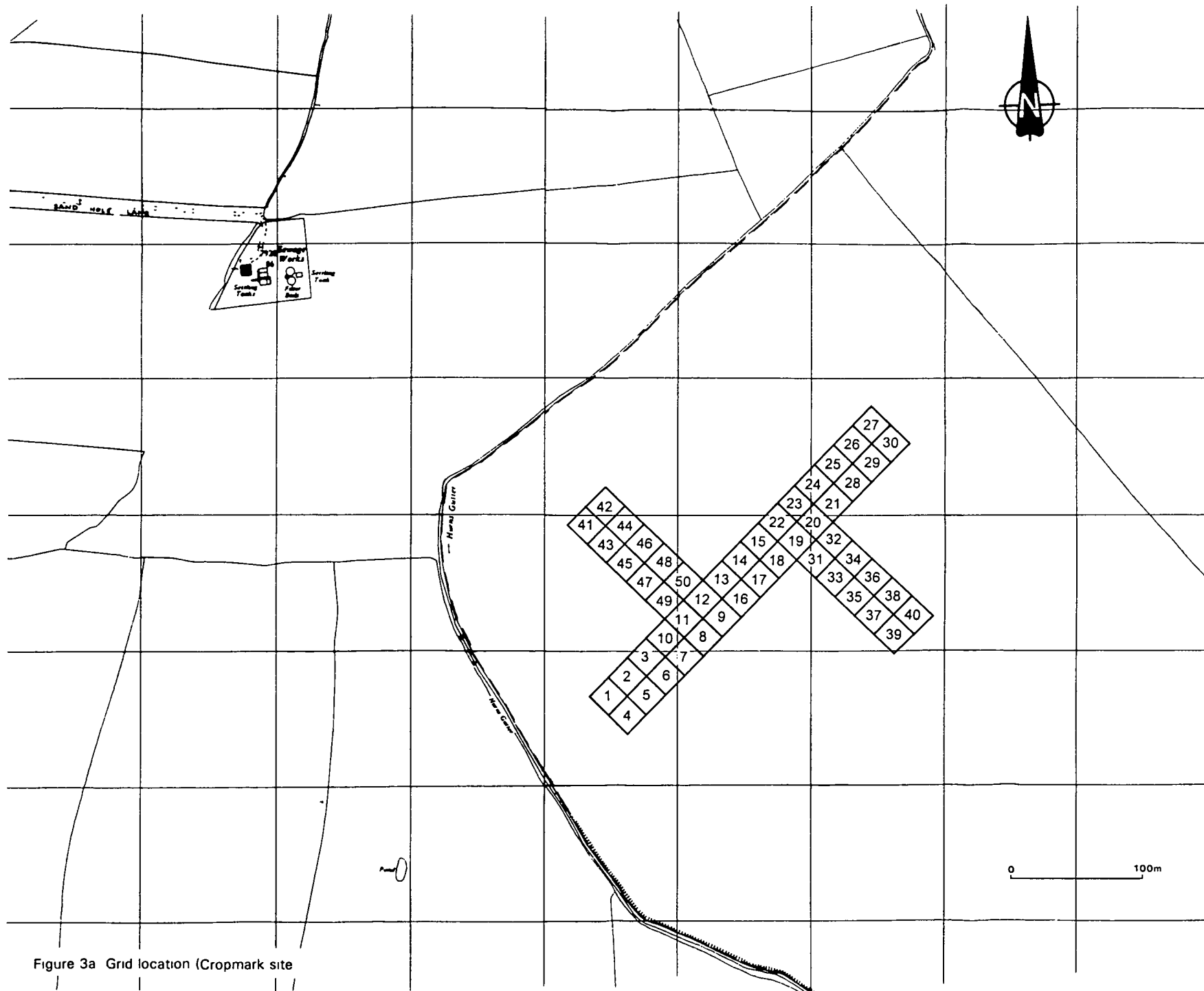


Figure 3a Grid location (Cropmark site)

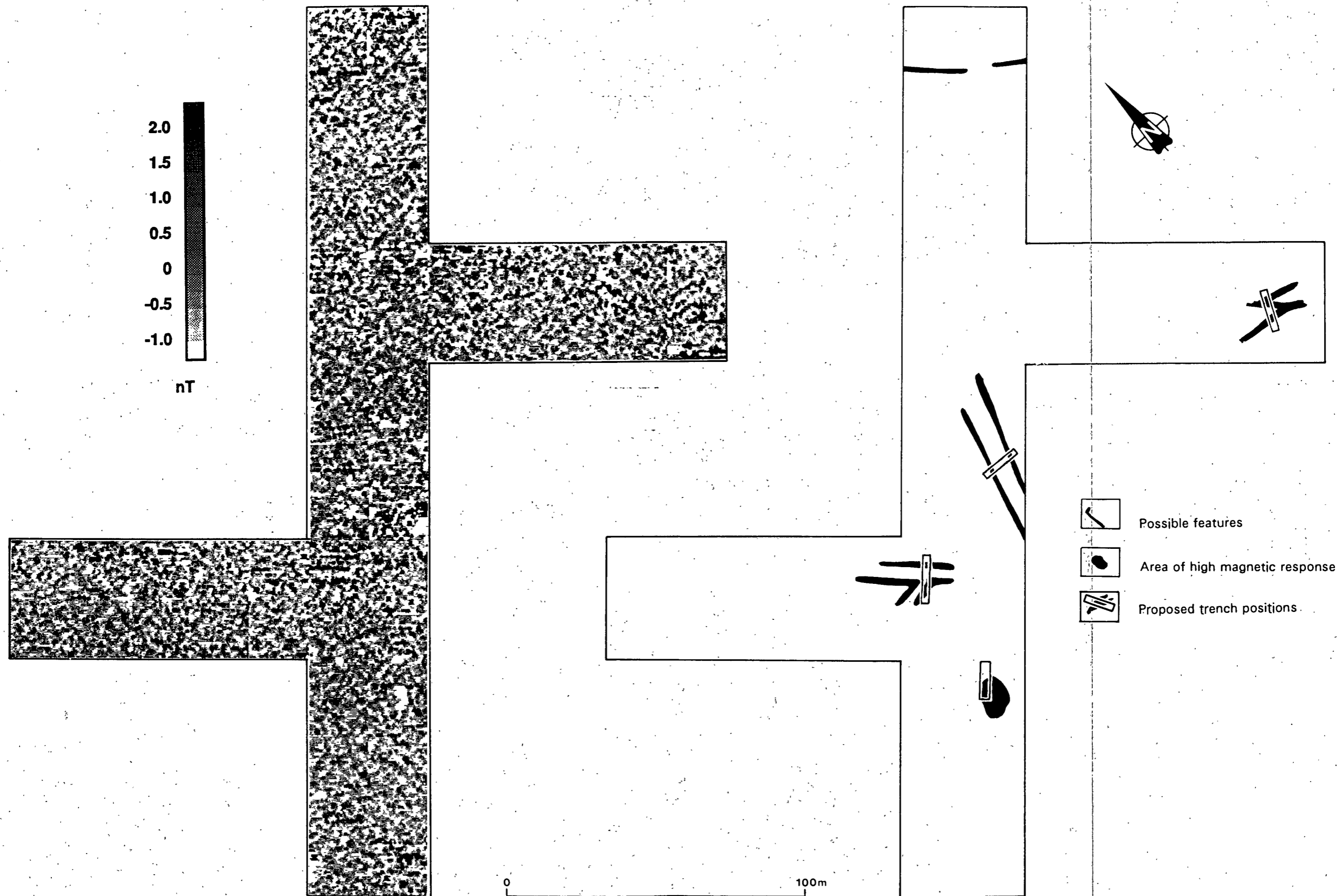


Figure 3b Gradiometer data and interpretation plots (Cropmark site)

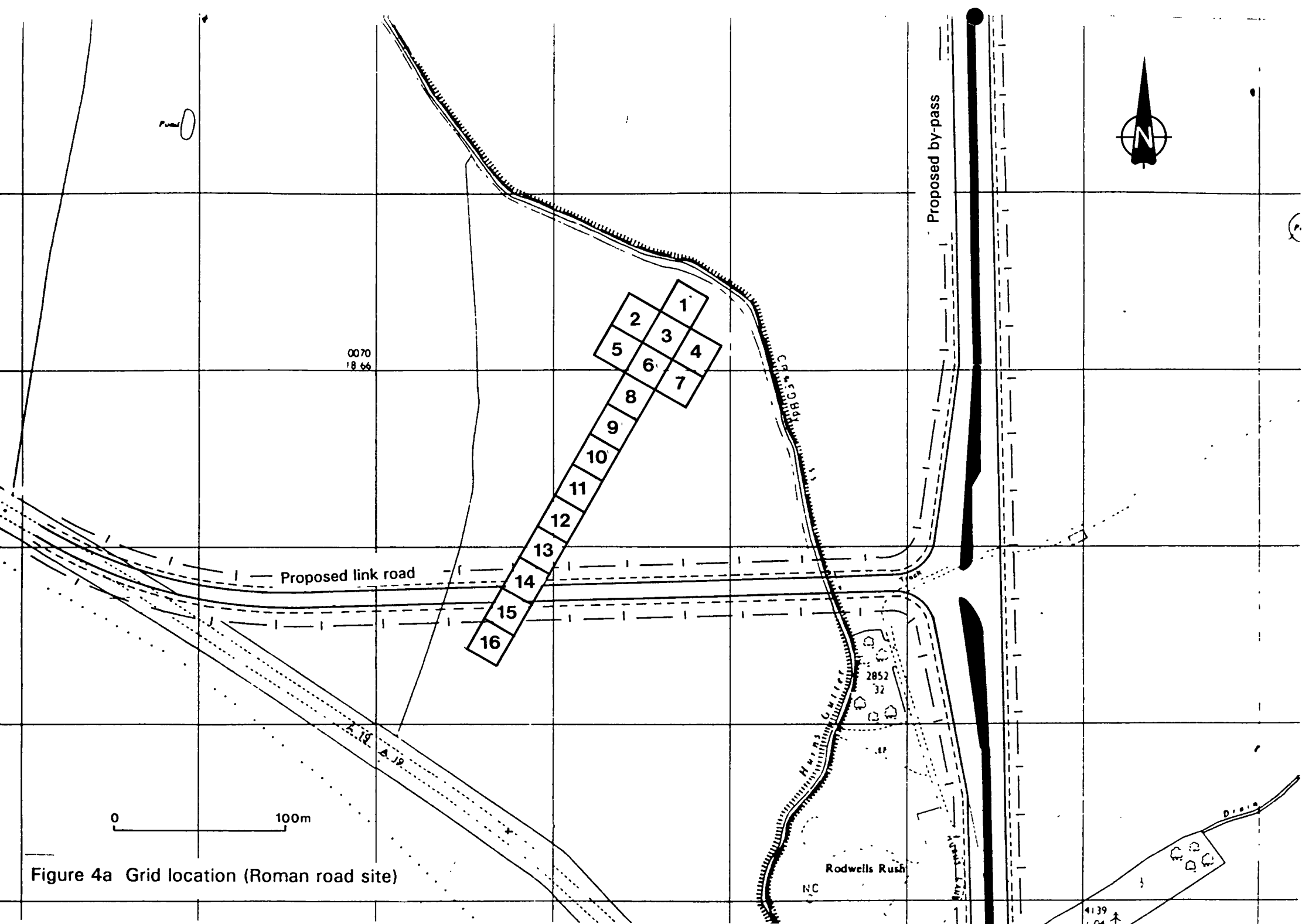


Figure 4a Grid location (Roman road site)

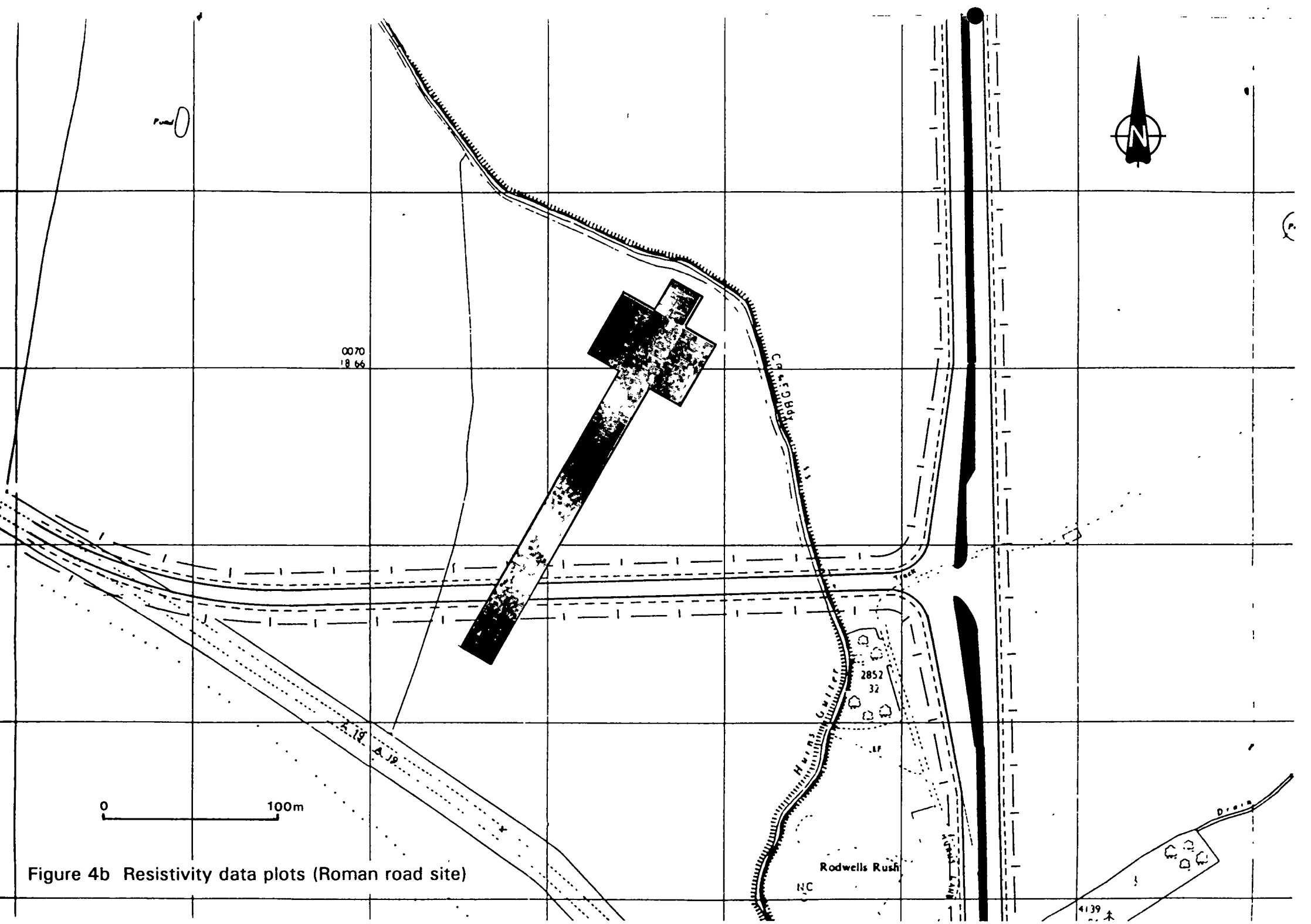


Figure 4b Resistivity data plots (Roman road site)

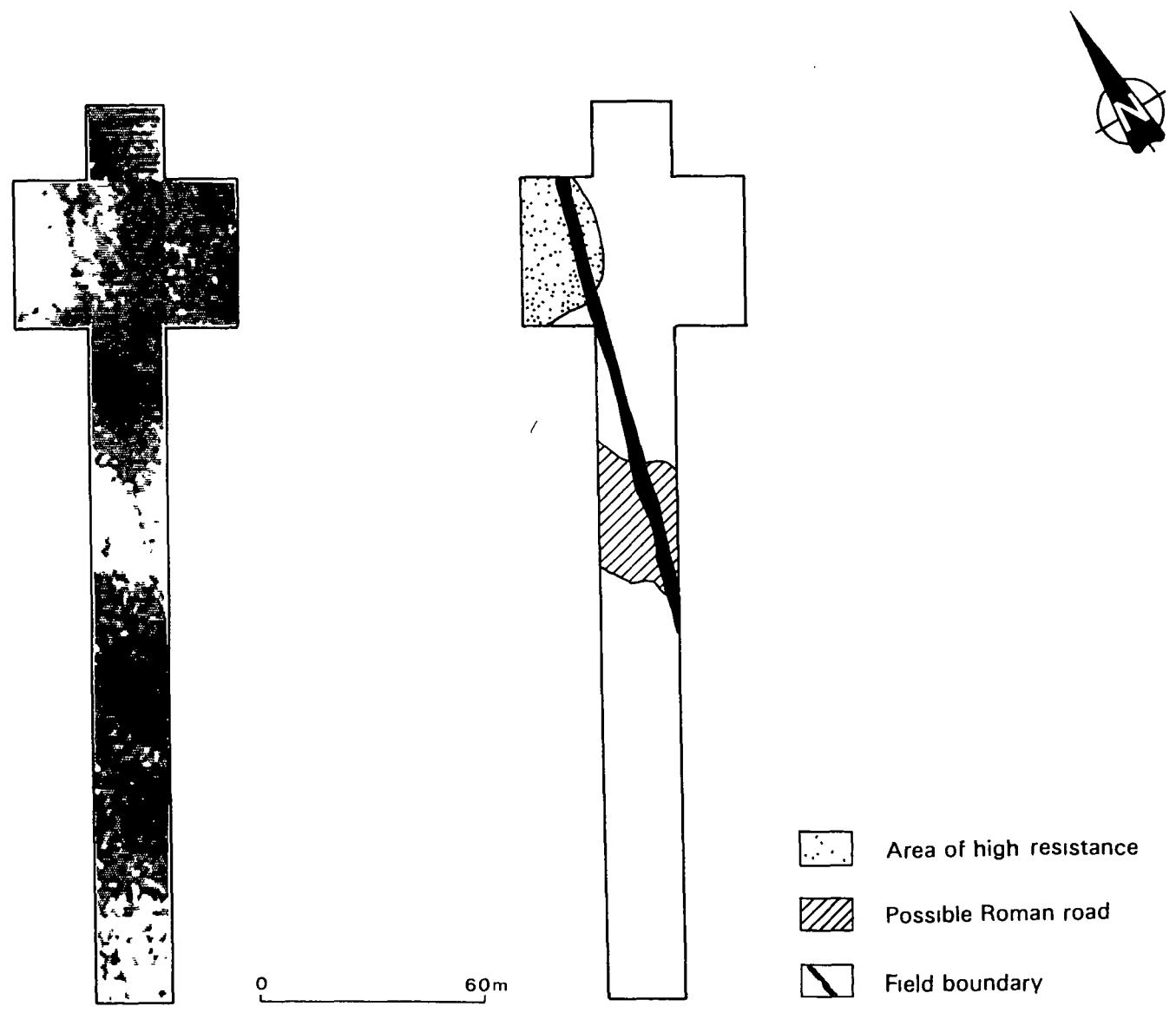


Figure 4c Interpretation plot (Roman road site)

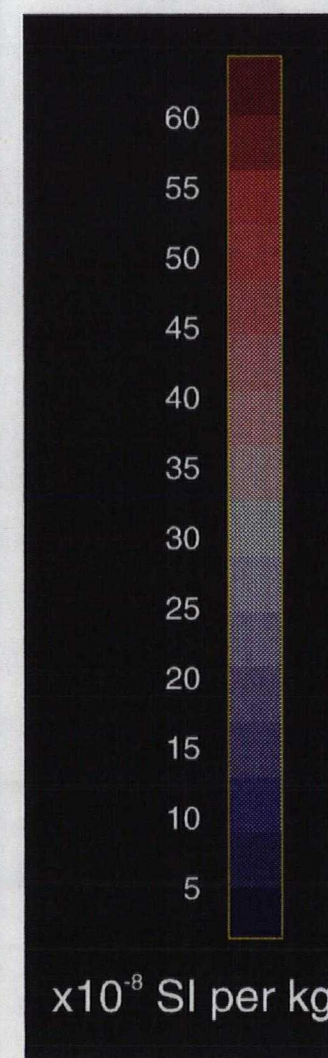
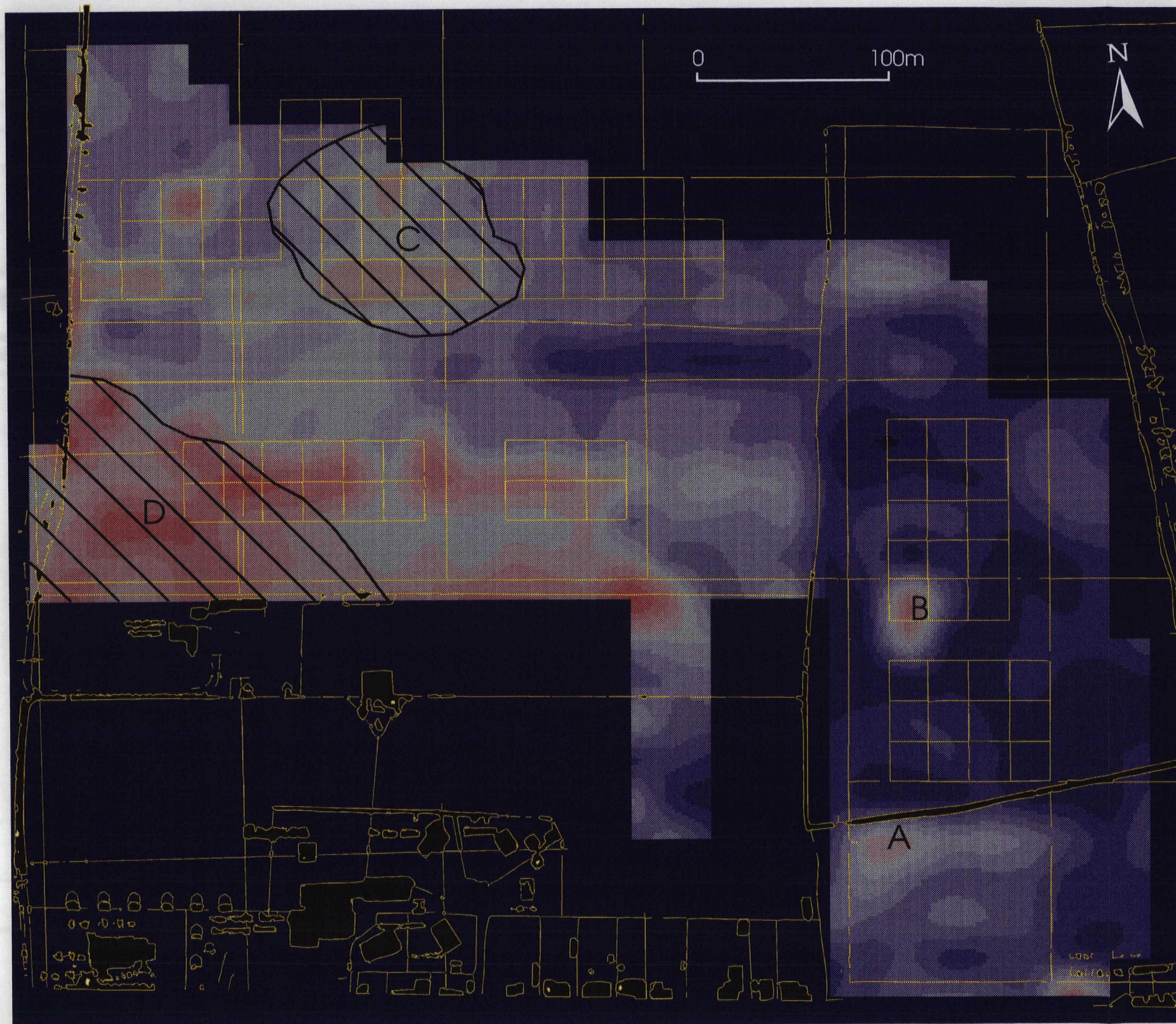
COLOUR PLOTS

A19 Shipton by
Beningbrough
Bypass

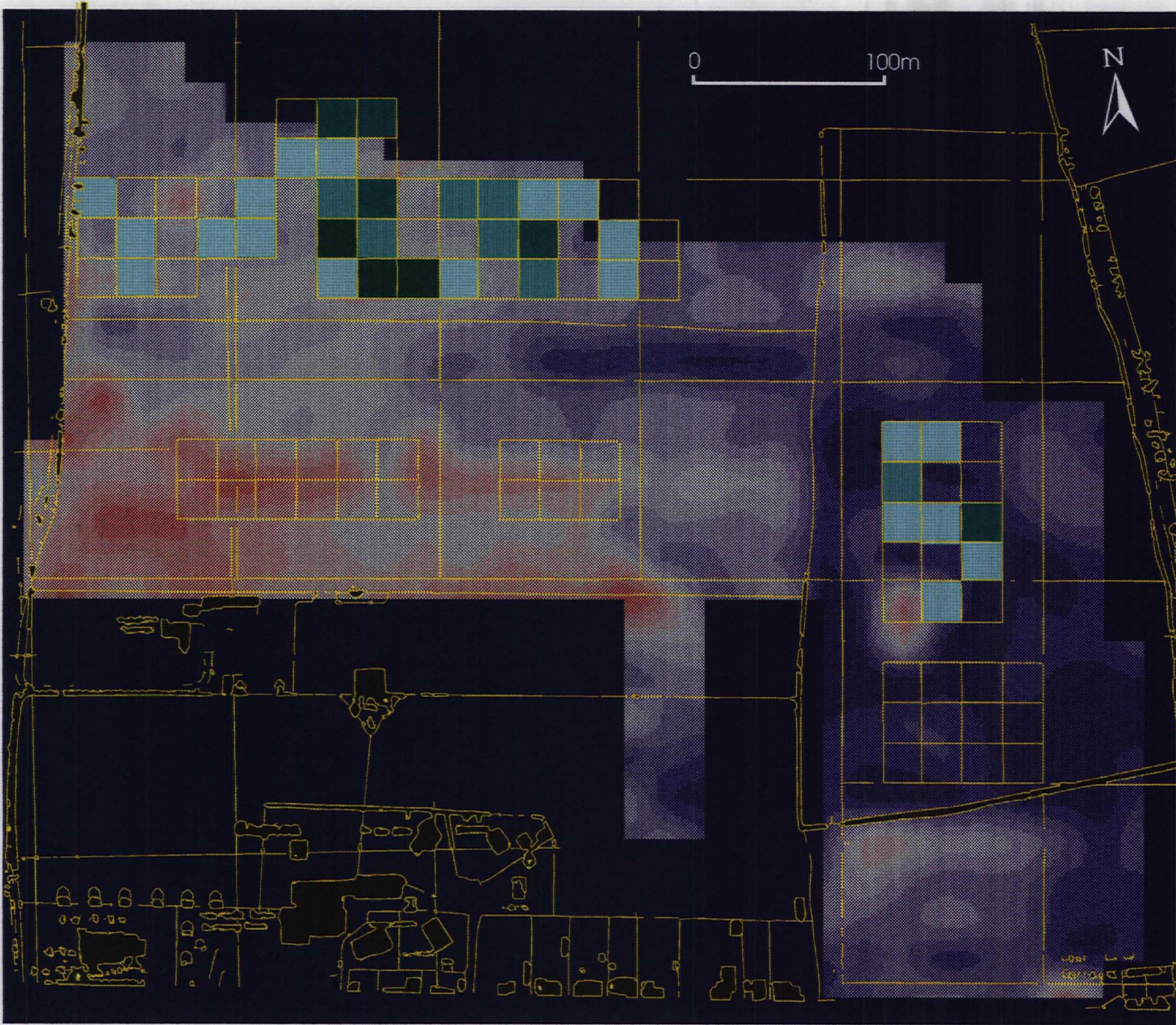
Colour Plot 1

AUDBY FIELD

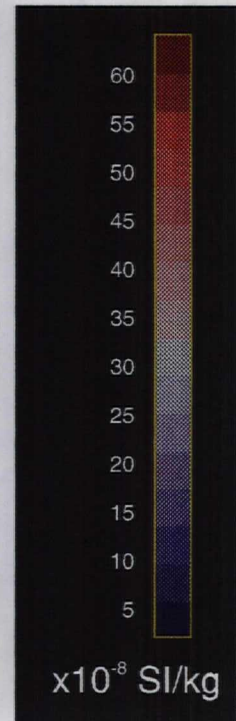
Magnetic
susceptibility



AUDBY FIELD
Colour Plot 2
Fieldwalking results



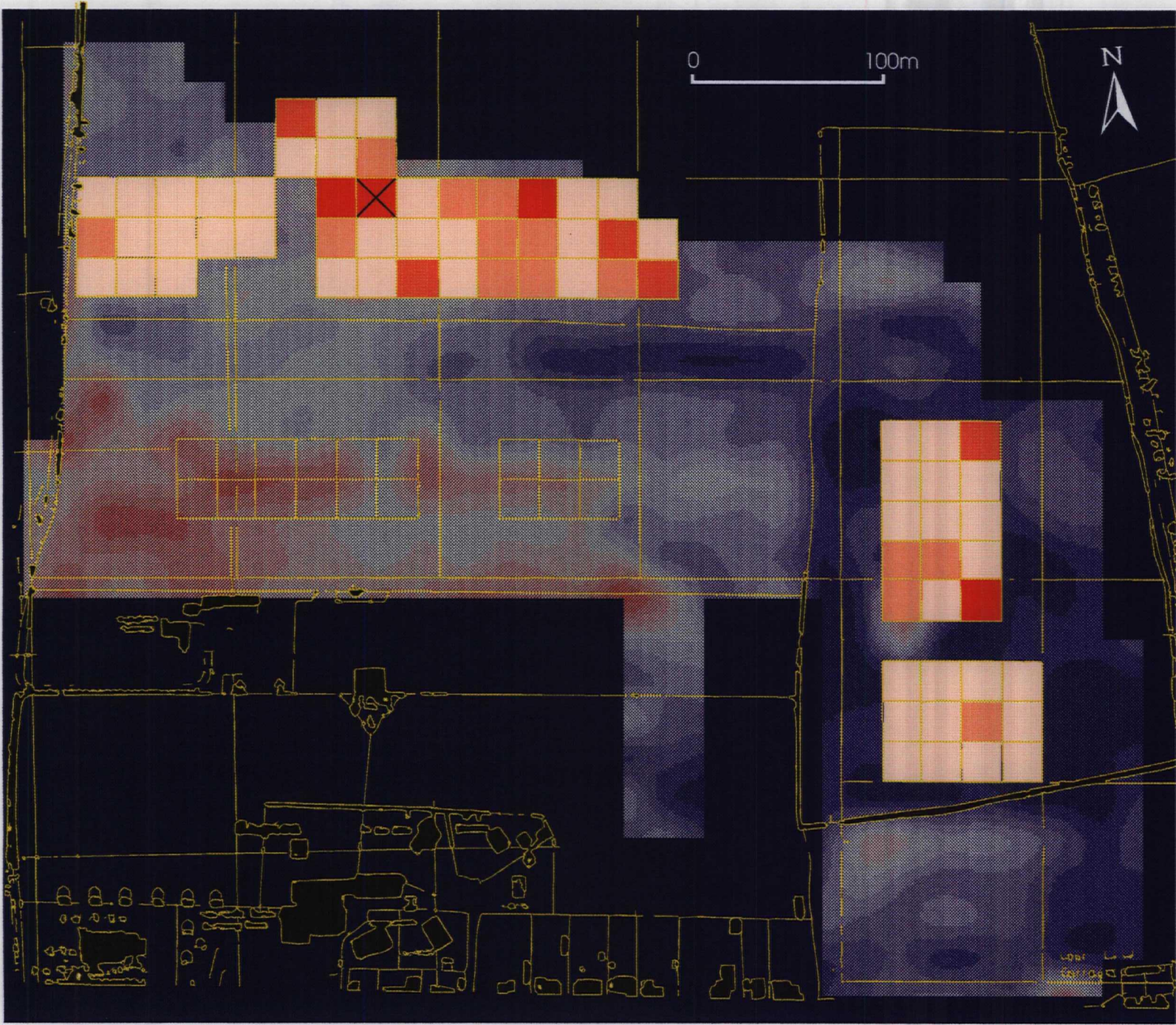
- Flints
- 1
 - 2
 - 3
 - 4



AUDBY FIELD
Colour Plot 3
Fieldwalking results



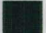

Medieval Pottery Sherds

- Less than 4
- 4 or 5
- 6 or 7
- greater than 7
- X Saxon



AUDBY FIELD
Colour Plot 5
Fieldwalking results

Weight of tile (x10g)

-  1 to 10
-  11 to 20
-  21 to 30
-  31 to 40

