

With Permission of the Controller
of Her Majesty's Stationery Office
© Crown Copyright
License No. AL50453A

Scale 1:25,000

KEY / NOTES

Site Boundary

MAP

Archaeological Consultancy Ltd.

TITLE: Site Location Map

SITE: LAND EAST OF SCALBY ROAD

Figure 1

Scale: 1:25,000

CLIENT: Scarborough R.U.F.C.

DRAWING REF.:

DRAWN BY: DK

APPROVED BY:

CHECKED BY:

REVISIONS:



With Permission of the Controller
of Her Majesty's Stationery Office
© Crown Copyright
License No. AL50453A

Scale 1:10,000

KEY / NOTES

Site Boundary

MAP

Archaeological Consultancy Ltd.

TITLE: Proposed Development Area

Figure 2

Scale: 1:10,000

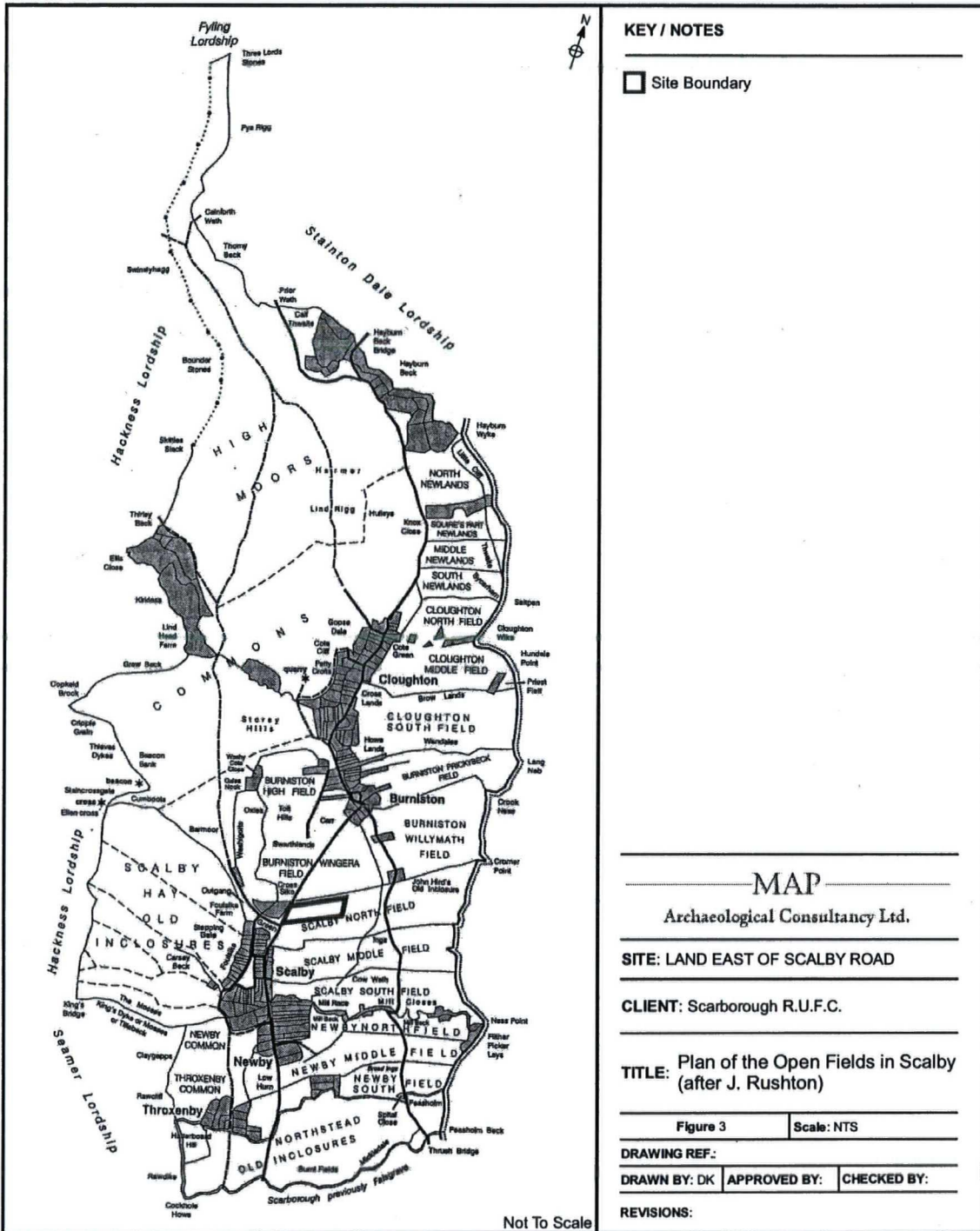
SITE: LAND EAST OF SCALBY ROAD

DRAWING REF.:

DRAWN BY: DK **APPROVED BY:** **CHECKED BY:**

CLIENT: Scarborough R.U.F.C.

REVISIONS:





With Permission of the Controller
 of Her Majesty's Stationery Office
 © Crown Copyright
 License No. AL50453A

Not To Scale

KEY / NOTES

Site Boundary

MAP

Archaeological Consultancy Ltd.

SITE: LAND EAST OF SCALBY ROAD

CLIENT: Scarborough R.U.F.C.

TITLE: Extract from the 1771 Enclosure
 Plan of the Manor of Scalby
 (NYCRO: NRRD BQ no 1. /SCA
 [MIC 289, 2234/420])

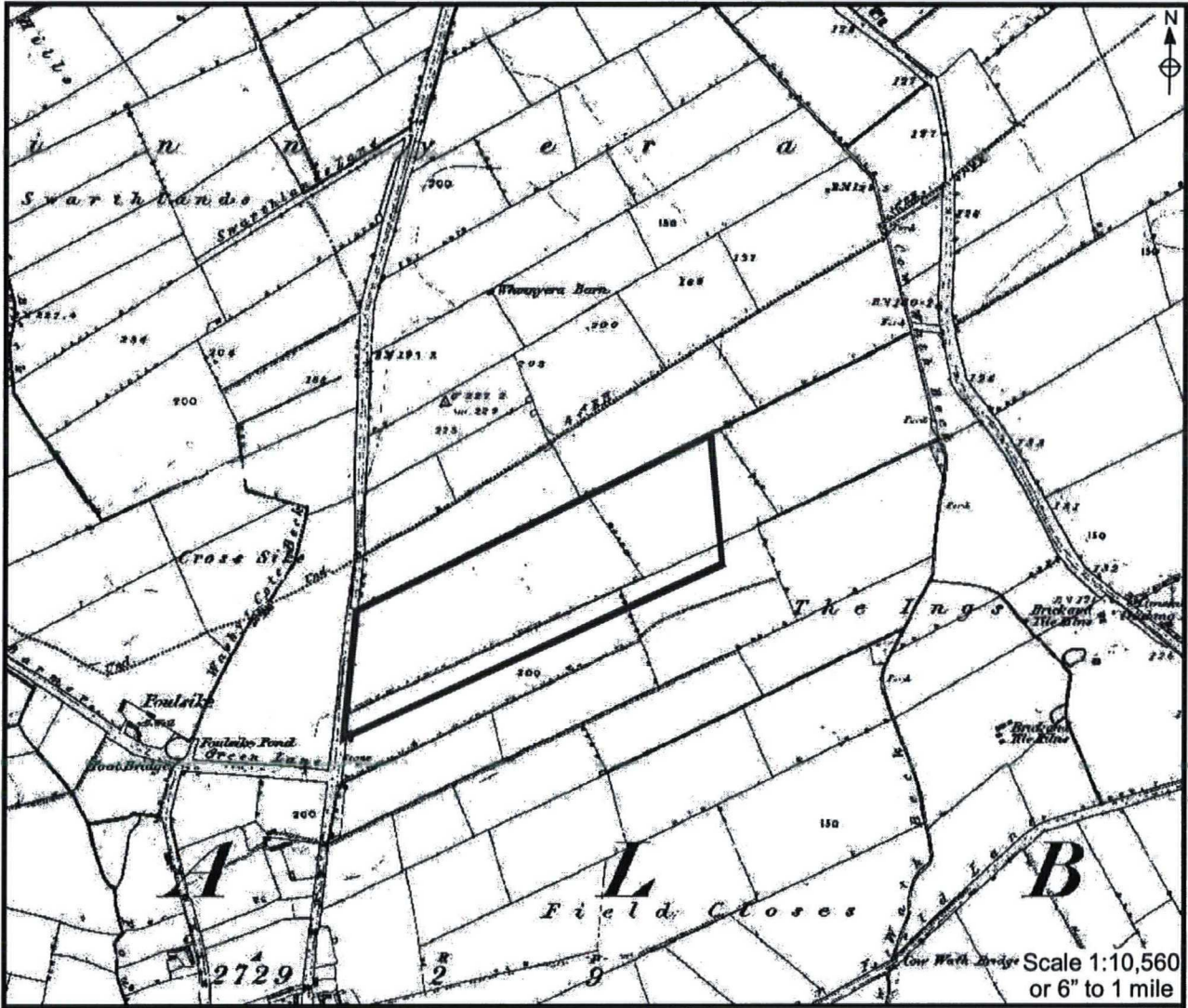
Figure 4

Scale: NTS

DRAWING REF.:

DRAWN BY: DK **APPROVED BY:** **CHECKED BY:**

REVISIONS:



Scale 1:10,560
or 6" to 1 mile

KEY / NOTES

Site Boundary

MAP

Archaeological Consultancy Ltd.

SITE: LAND EAST OF SCALBY ROAD

CLIENT: Scarborough R.U.F.C.

TITLE: Extract from the First Edition
Ordnance Survey Map, 1854

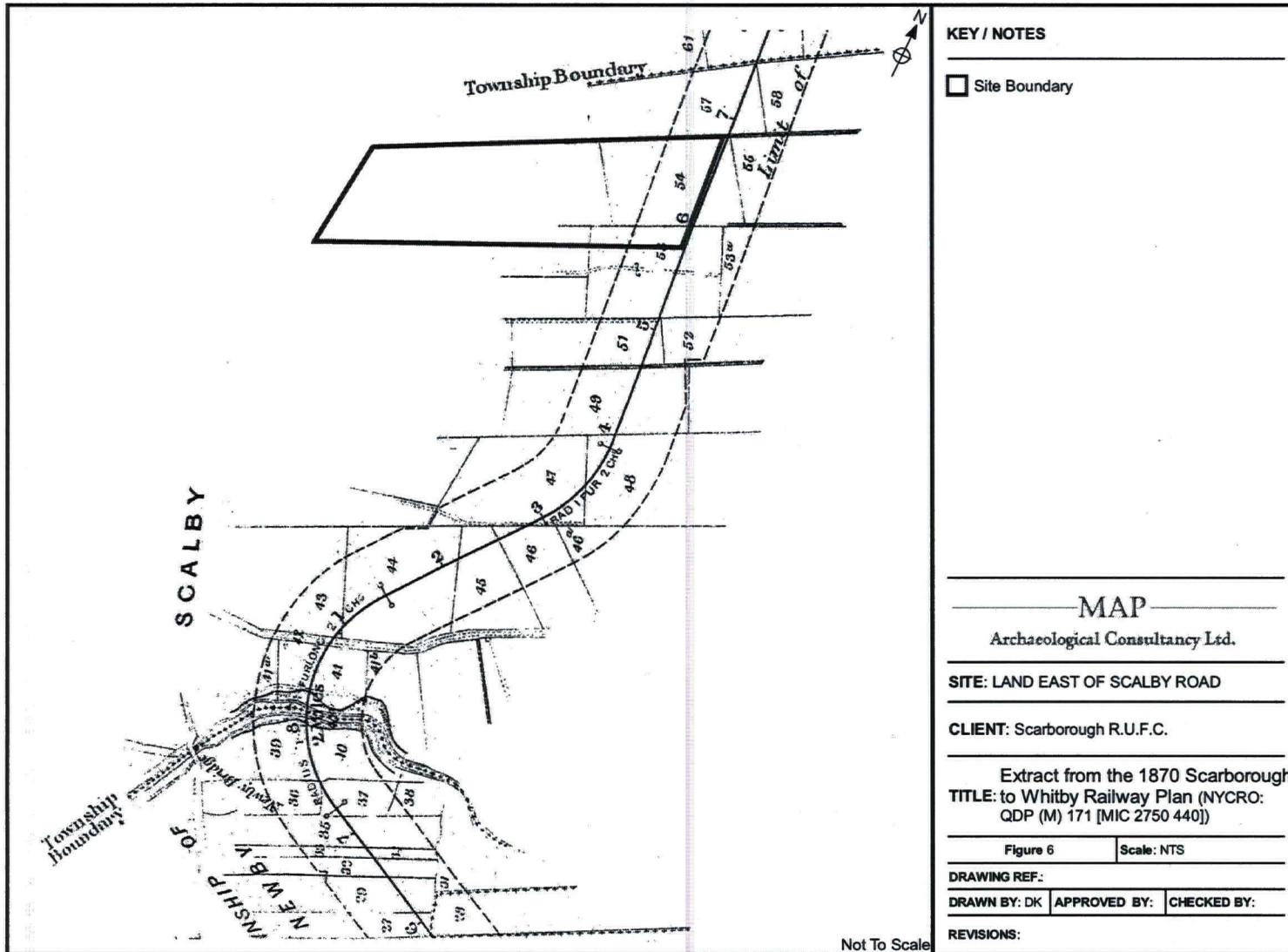
Figure 5

Scale: 1:10,560

DRAWING REF.:

DRAWN BY: DK APPROVED BY: CHECKED BY:

REVISIONS:



Not To Scale

KEY / NOTES

Site Boundary

MAP

Archaeological Consultancy Ltd.

SITE: LAND EAST OF SCALBY ROAD

CLIENT: Scarborough R.U.F.C.

Extract from the 1870 Scarborough
TITLE: to Whitby Railway Plan (NYCRO:
QDP (M) 171 [MIC 2750 440])

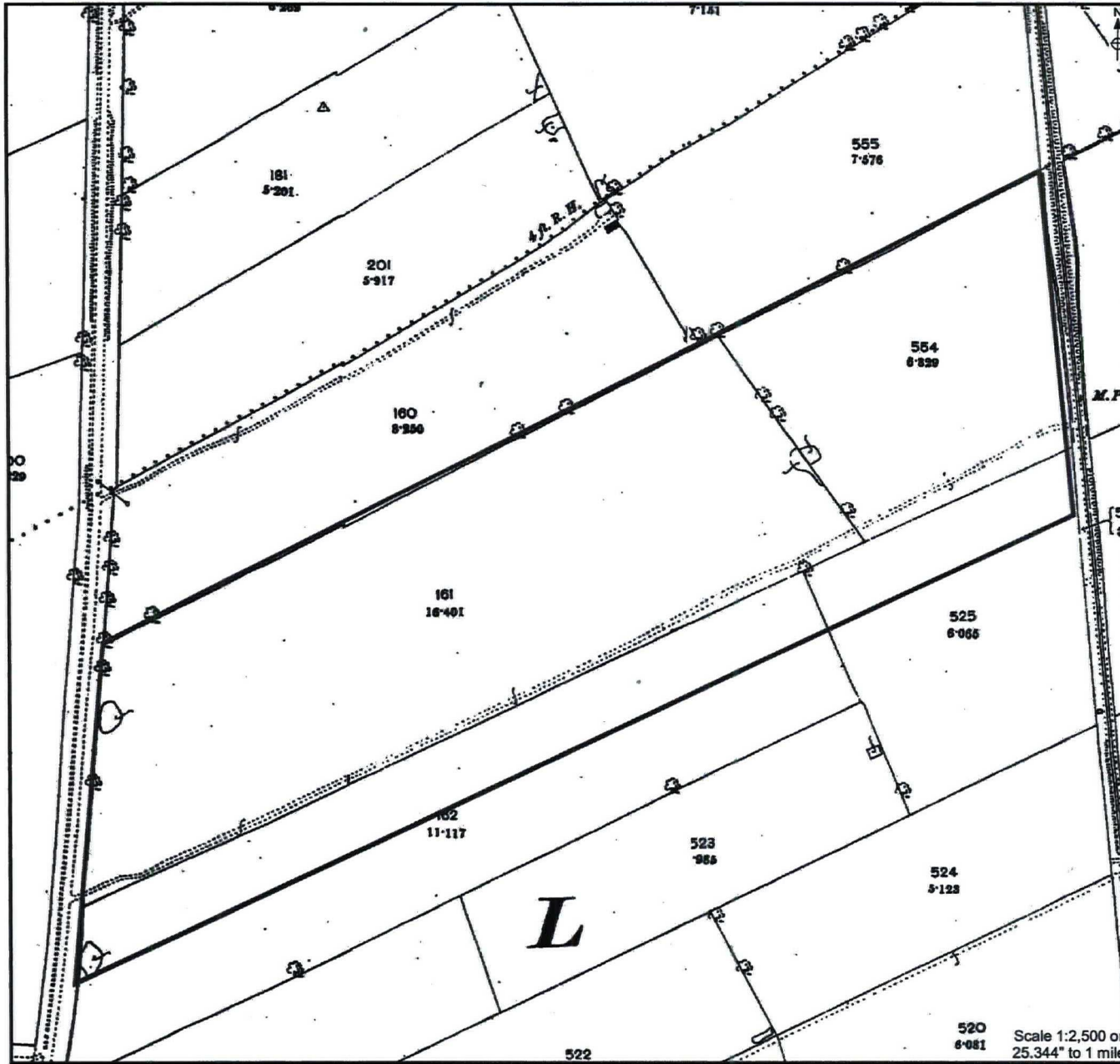
Figure 6

Scale: NTS

DRAWING REF.:

DRAWN BY: DK APPROVED BY: CHECKED BY:

REVISIONS:



KEY / NOTES

Site Boundary

MAP

Archaeological Consultancy Ltd.

SITE: LAND EAST OF SCALBY ROAD

CLIENT: Scarborough R.U.F.C.

TITLE: Extract from the 1890 Edition
Ordnance Survey Map

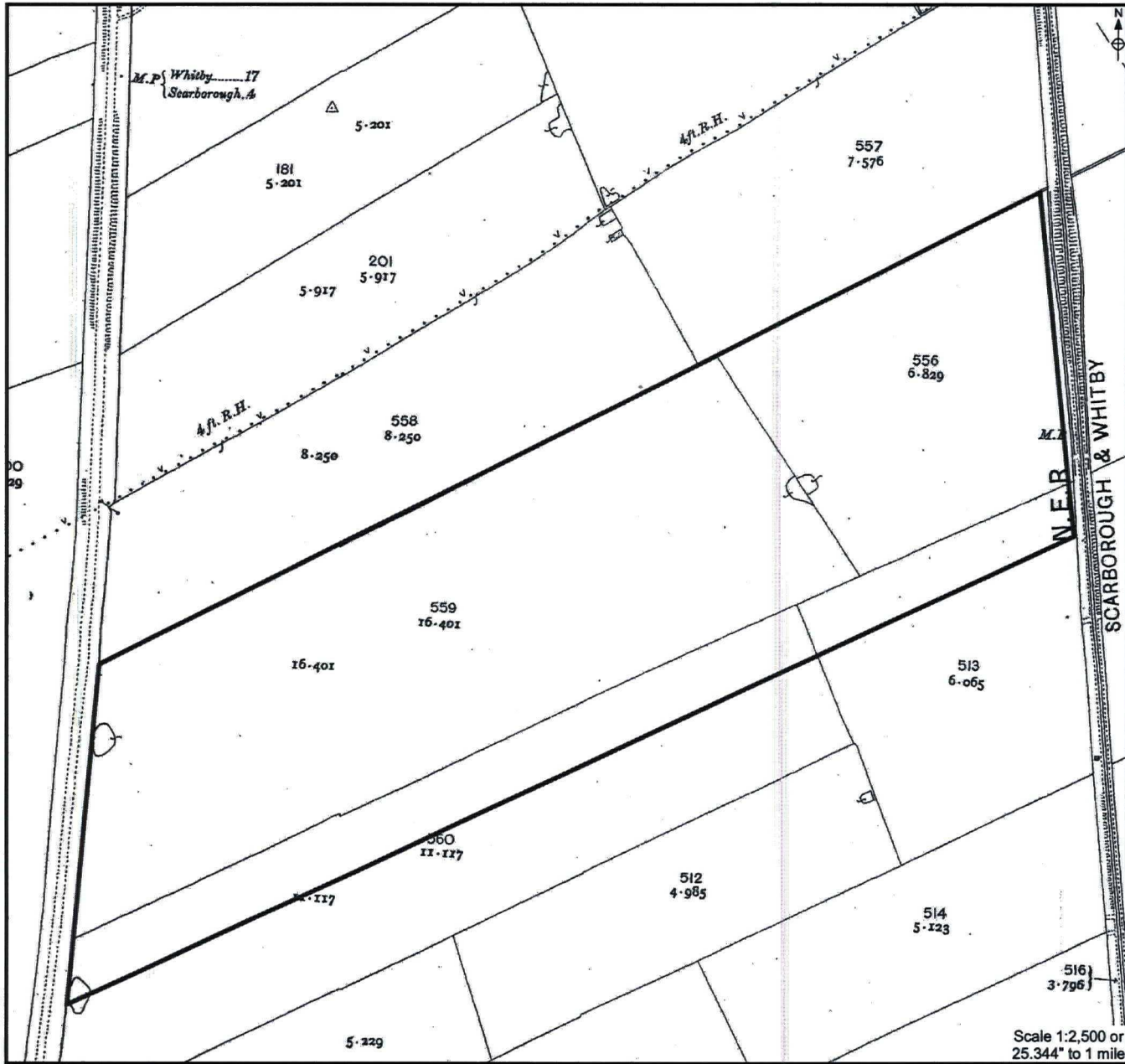
Figure 7 Scale: 1:2,500

DRAWING REF:

DRAWN BY: DK APPROVED BY: CHECKED BY:

REVISIONS:

Scale 1:2,500 or
25.344" to 1 mile



KEY / NOTES

Site Boundary

MAP
Archaeological Consultancy Ltd.

SITE: LAND EAST OF SCALBY ROAD

CLIENT: Scarborough R.U.F.C.

TITLE: Extract from the 1912 Edition
Ordnance Survey Map

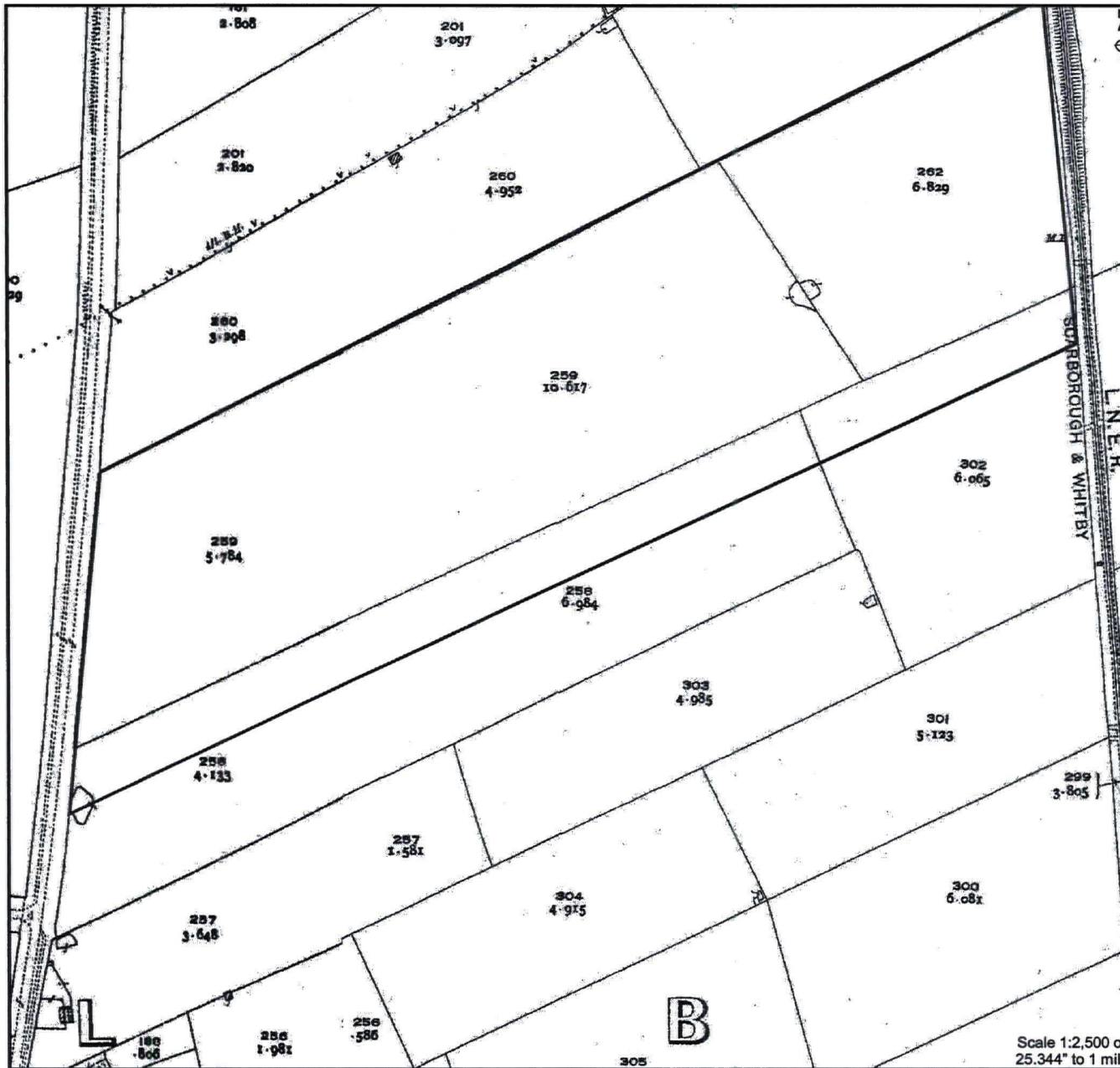
Figure 8 **Scale:** 1:2,500

DRAWING REF.:

DRAWN BY: DK **APPROVED BY:** **CHECKED BY:**

REVISIONS:

Scale 1:2,500 or
25.344" to 1 mile



KEY / NOTES

Site Boundary

MAP

Archaeological Consultancy Ltd.

SITE: LAND EAST OF SCALBY ROAD

CLIENT: Scarborough R.U.F.C.

TITLE: Extract from the 1928 Edition
Ordnance Survey Map

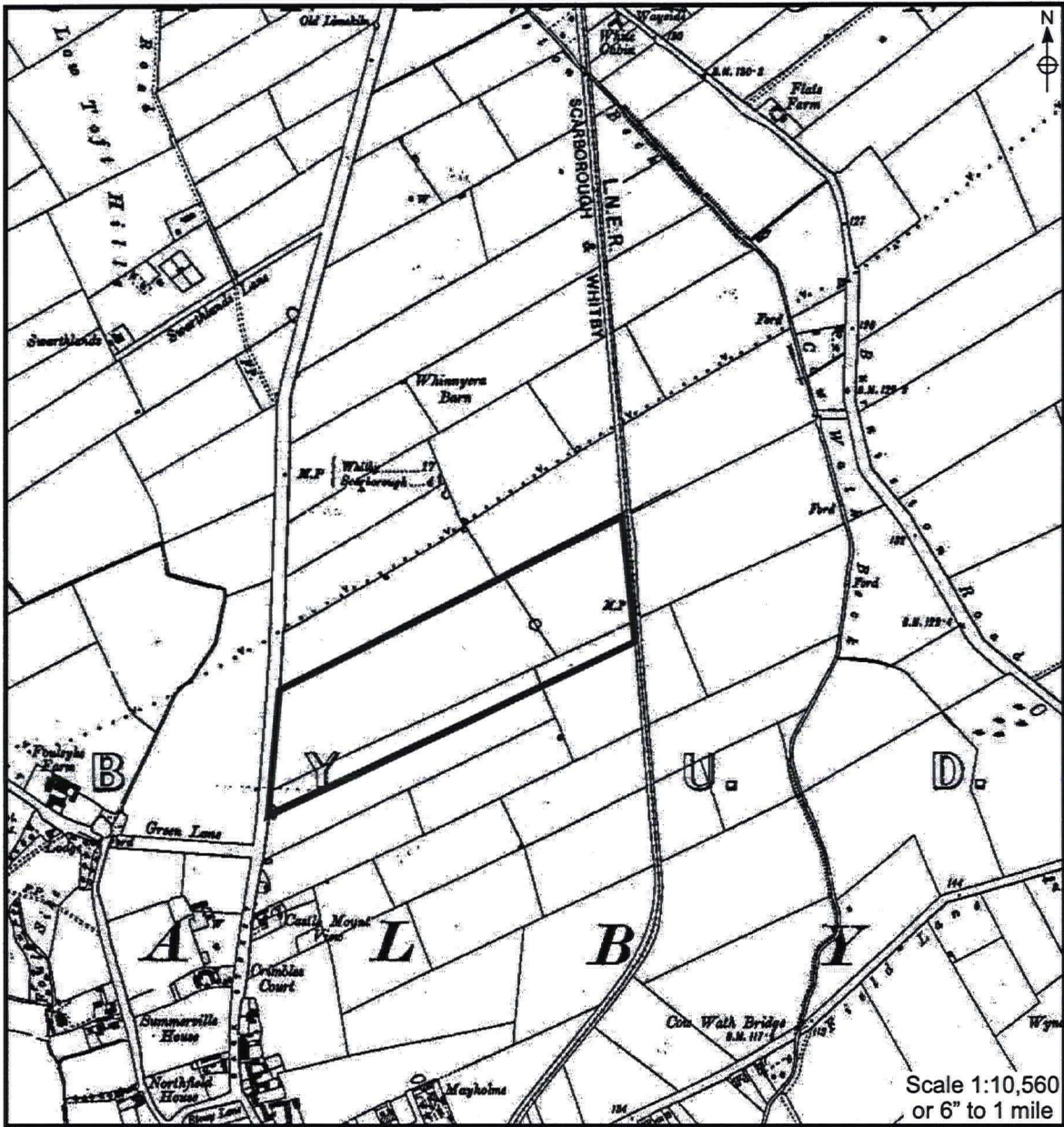
Figure 9

Scale: 1:2,500

DRAWING REF:

DRAWN BY: DK **APPROVED BY:** **CHECKED BY:**

REVISIONS:



KEY / NOTES

Site Boundary

MAP

Archaeological Consultancy Ltd.

SITE: LAND EAST OF SCALBY ROAD

CLIENT: Scarborough R.U.F.C.

TITLE: Extract from the 1930 Edition
Ordnance Survey Map

Figure 10

Scale: 1:10,560

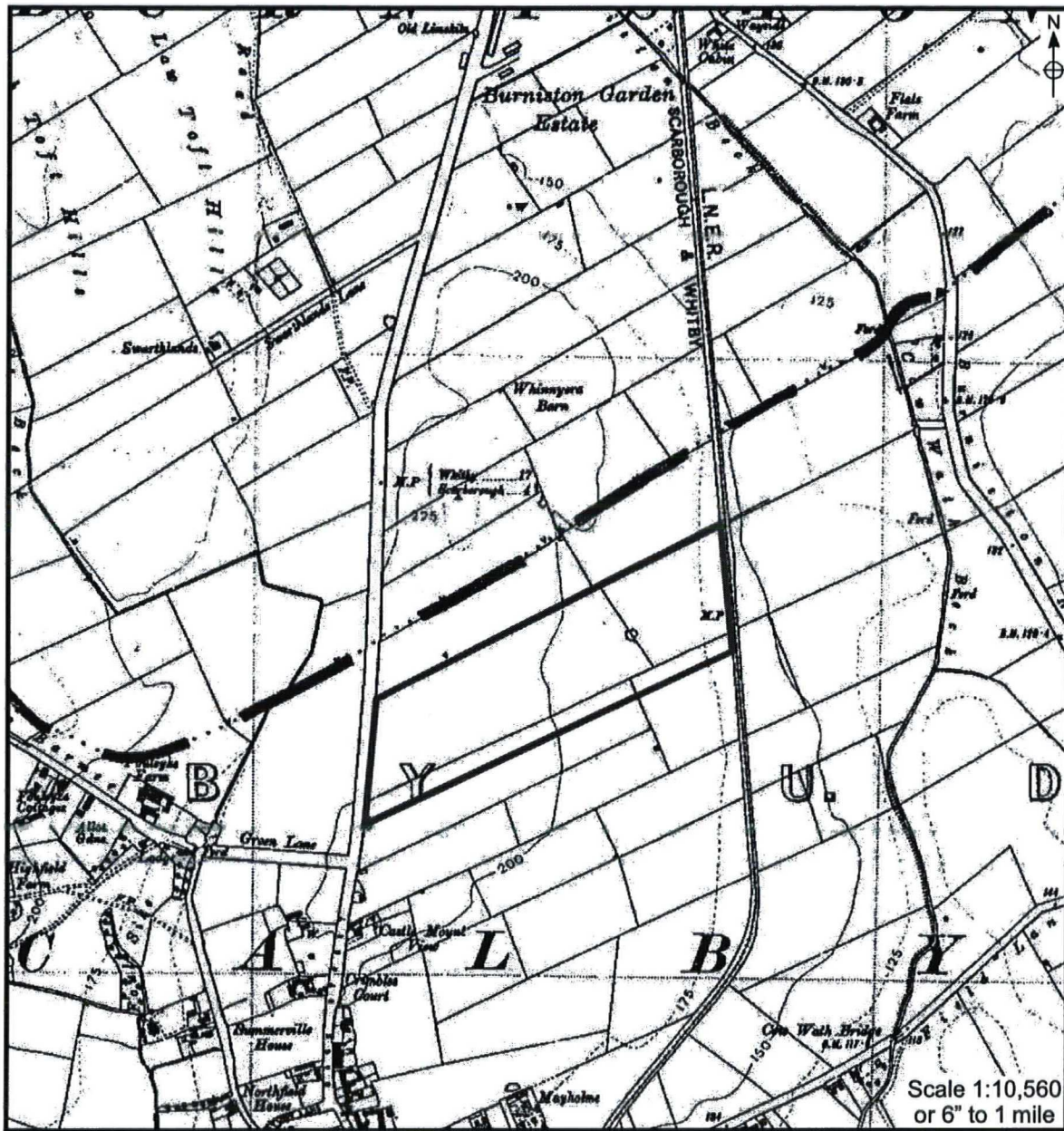
DRAWING REF.:

DRAWN BY: DK

APPROVED BY:

CHECKED BY:

REVISIONS:



KEY / NOTES

Site Boundary

MAP

Archaeological Consultancy Ltd.

SITE: LAND EAST OF SCALBY ROAD

CLIENT: Scarborough R.U.F.C.

TITLE: Extract from the 1938 Edition
Ordnance Survey Map

Figure 11

Scale: 1:10,560

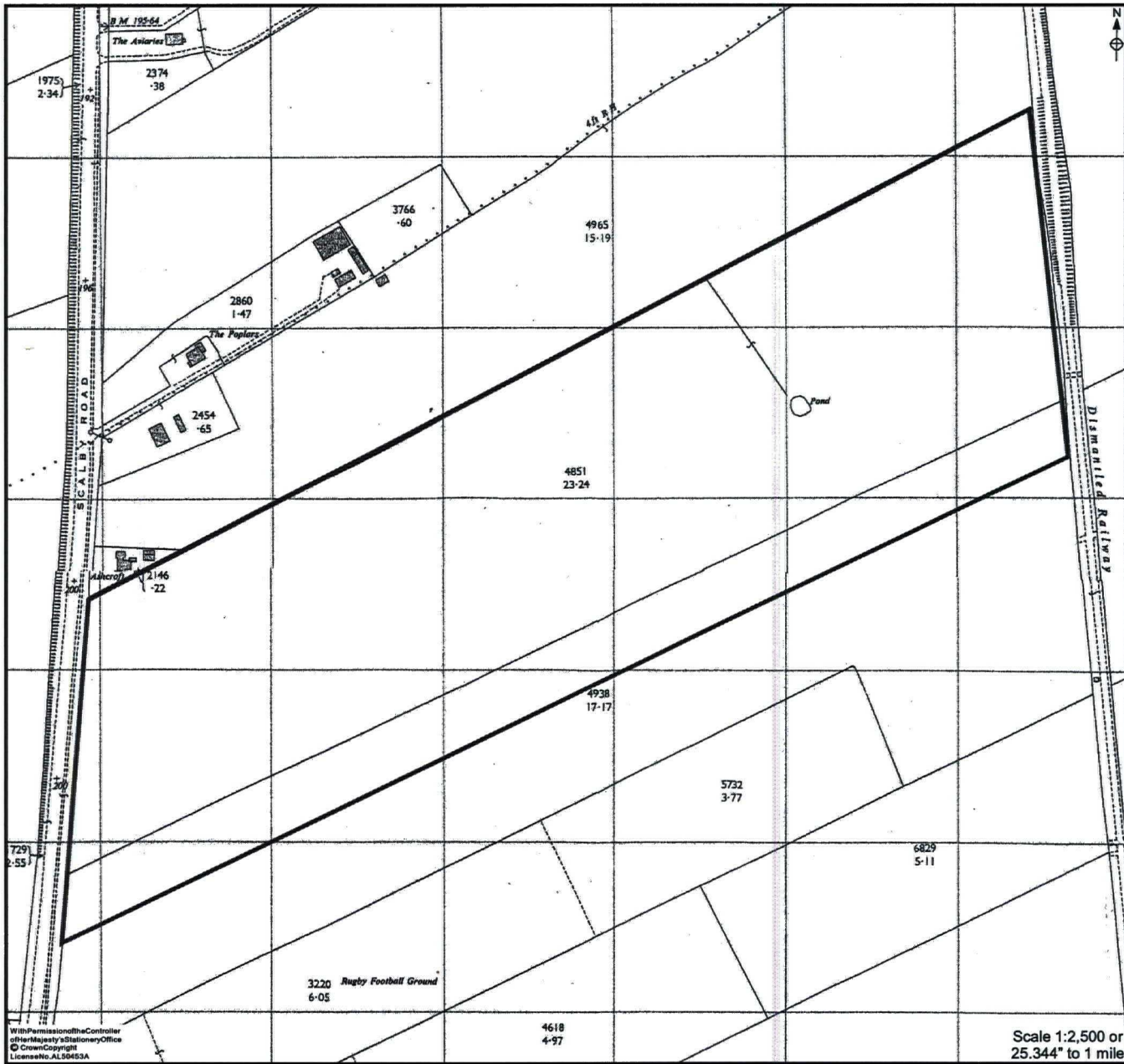
DRAWING REF.:

DRAWN BY: DK

APPROVED BY:

CHECKED BY:

REVISIONS:



KEY / NOTES

Site Boundary

MAP

Archaeological Consultancy Ltd.

SITE: LAND EAST OF SCALBY ROAD

CLIENT: Scarborough R.U.F.C.

TITLE: Extract from the 1969 Edition
Ordnance Survey Map

Figure 12 Scale: 1:2,500

DRAWING REF.:

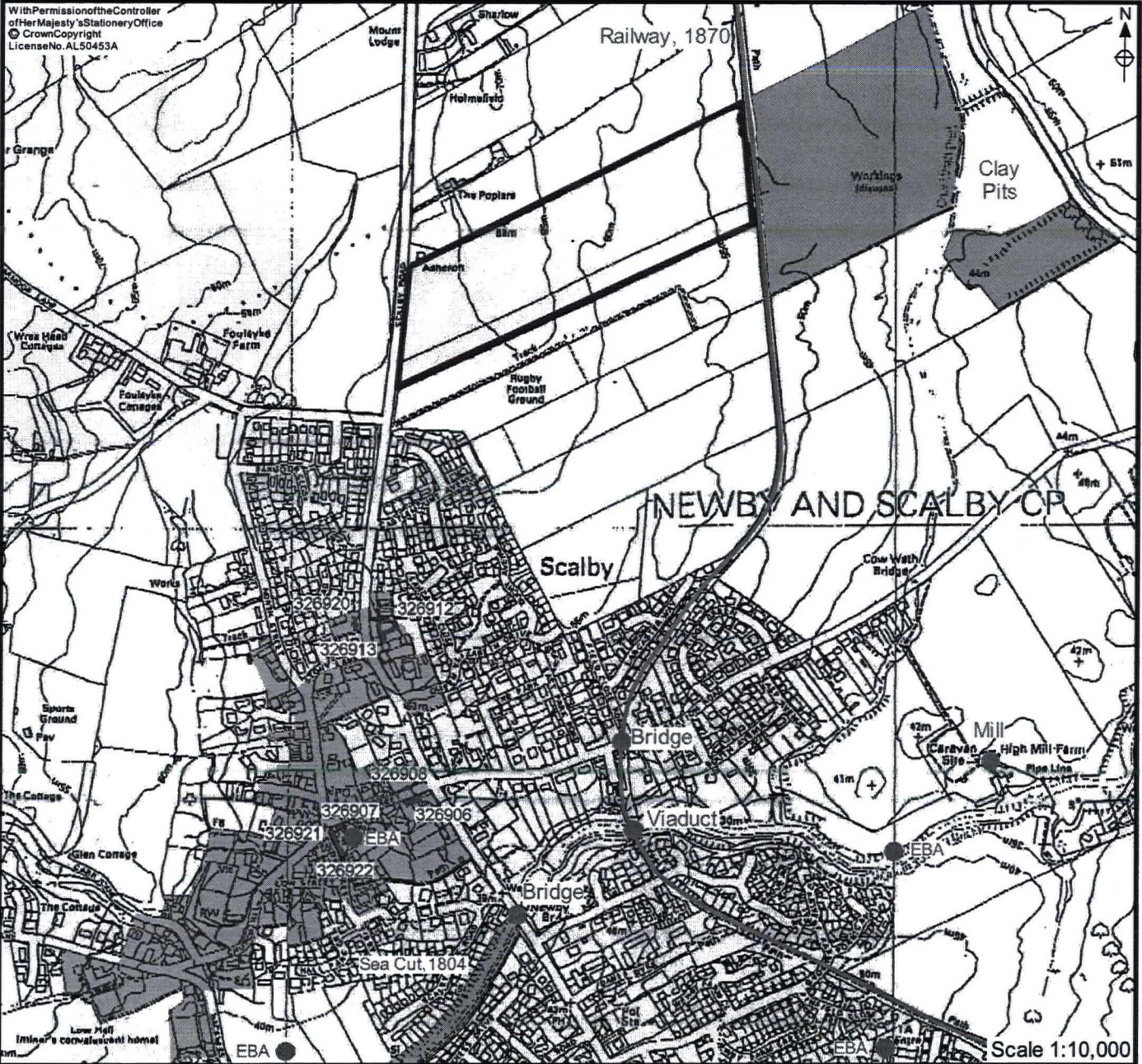
DRAWN BY: DK **APPROVED BY:** **CHECKED BY:**

REVISIONS:

With Permission of the Controller
of Her Majesty's Stationery Office
© Crown Copyright
License No. AL98453A

Scale 1:2,500 or
25.344" to 1 mile

With Permission of the Controller
of Her Majesty's Stationery Office
© Crown Copyright
License No. AL50453A



KEY / NOTES

- Site Boundary
- Conservation Area
- Sites of Importance
- Listed Buildings

MAP
Archaeological Consultancy Ltd.

SITE: LAND EAST OF SCALBY ROAD

CLIENT: Scarborough R.U.F.C.

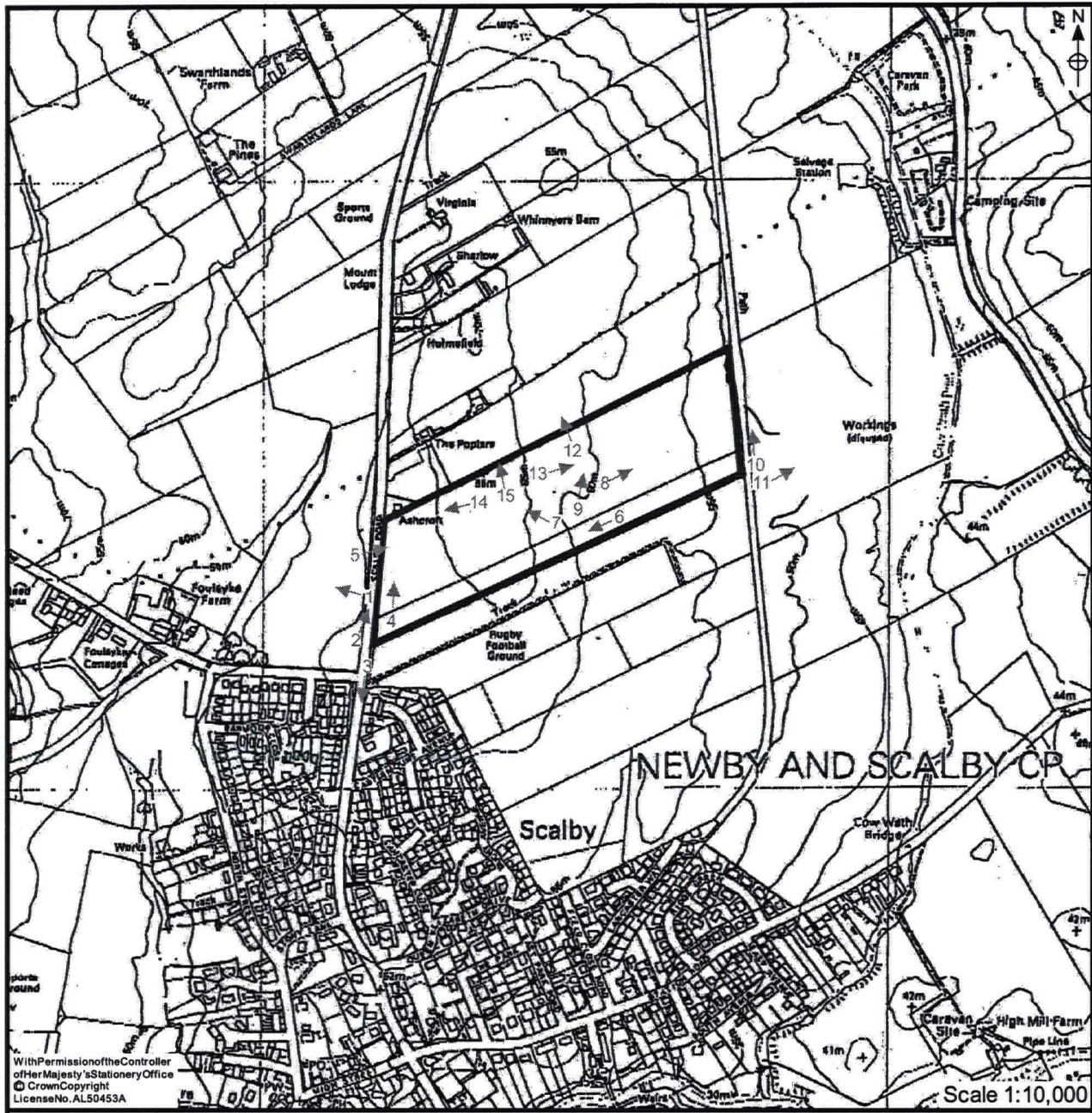
**TITLE: Plan of Conservation Area,
Archaeological Sites and Finds**

Figure 13 **Scale: 1:10,000**

DRAWING REF.:

DRAWN BY: DK **APPROVED BY:** **CHECKED BY:**

REVISIONS:



With Permission of the Controller
of Her Majesty's Stationery Office
© Crown Copyright
License No. AL50453A

Scale 1:10,000

KEY / NOTES

Site Boundary

MAP

Archaeological Consultancy Ltd.

SITE: LAND EAST OF SCALBY ROAD

CLIENT: Scarborough R.U.F.C.

TITLE: Location of Plates

Figure 14

Scale: 1:10,000

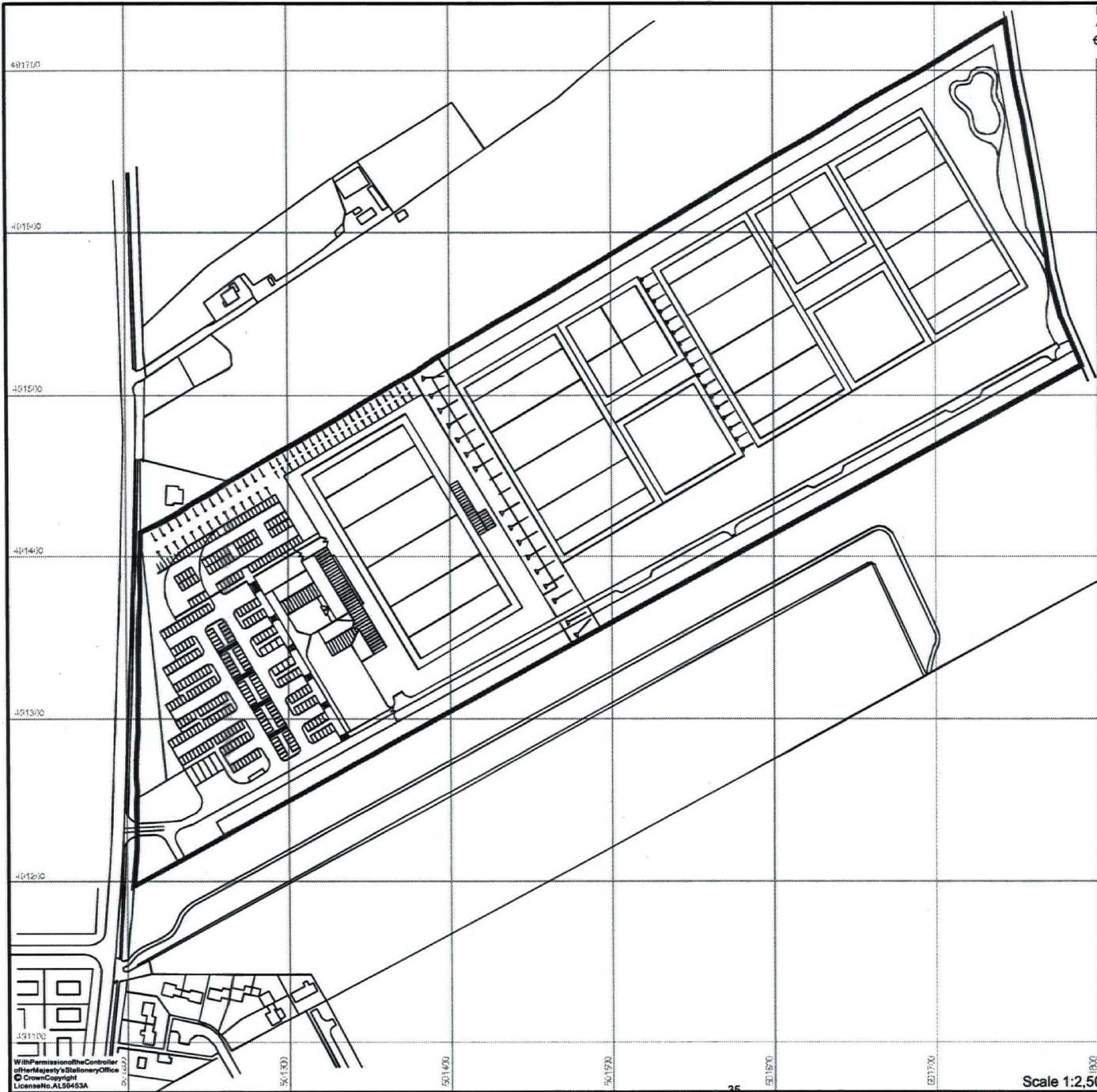
DRAWING REF.:

DRAWN BY: DK

APPROVED BY:

CHECKED BY:

REVISIONS:



KEY / NOTES

- Site Boundary
- Proposed Development Plan

MAP

Archaeological Consultancy Ltd.

SITE: LAND EAST OF SCALBY ROAD

CLIENT: Scarborough R.U.F.C.

TITLE: Site Development Plan

Figure 15 Scale: 1:2,500

DRAWING REF.:

DRAWN BY: DK **APPROVED BY:** **CHECKED BY:**

REVISIONS:

With Permission of the Controller
of Her Majesty's Stationery Office
© Crown Copyright
License No. AL59453A



Plate 1. View to the West of the Proposed Development Area. Facing West



Plate 2. View of Scalby Road. Facing North



Plate 3. View of Scalby Road. Facing South



Plate 4. View of Hedgerow on Western Boundary of Site. Facing North



Plate 5. View of Proposed Development Area from Scalby Road. Facing East



Plate 6. View of Hedgerow on the Southern Boundary of Northern Field. Facing West



Plate 7. View of Ashcroft. Facing North West



Plate 8. View of Northern Field. Facing East



Plate 9. View of Pond. Facing North East



Plate 10. View of Footpath along Old Railway Line. Facing North



Plate 11. View of Former Clay Pits, East of the Proposed Development Area. Facing East



Plate 12. View of Laid Hawthorn in North Hedge Boundary. Facing North



Plate 13. View of Proposed Development Area. Facing East



Plate 14. View of Proposed Development Area. Facing West



Plate 15. View of Burrows in Northern Hedge Boundary Bank. Facing North