



Plate 1. Northwest facing section (86), through pit 1272 (Area A)



Plate 2. Northeast facing section (91), through pit 1285 (Area A)

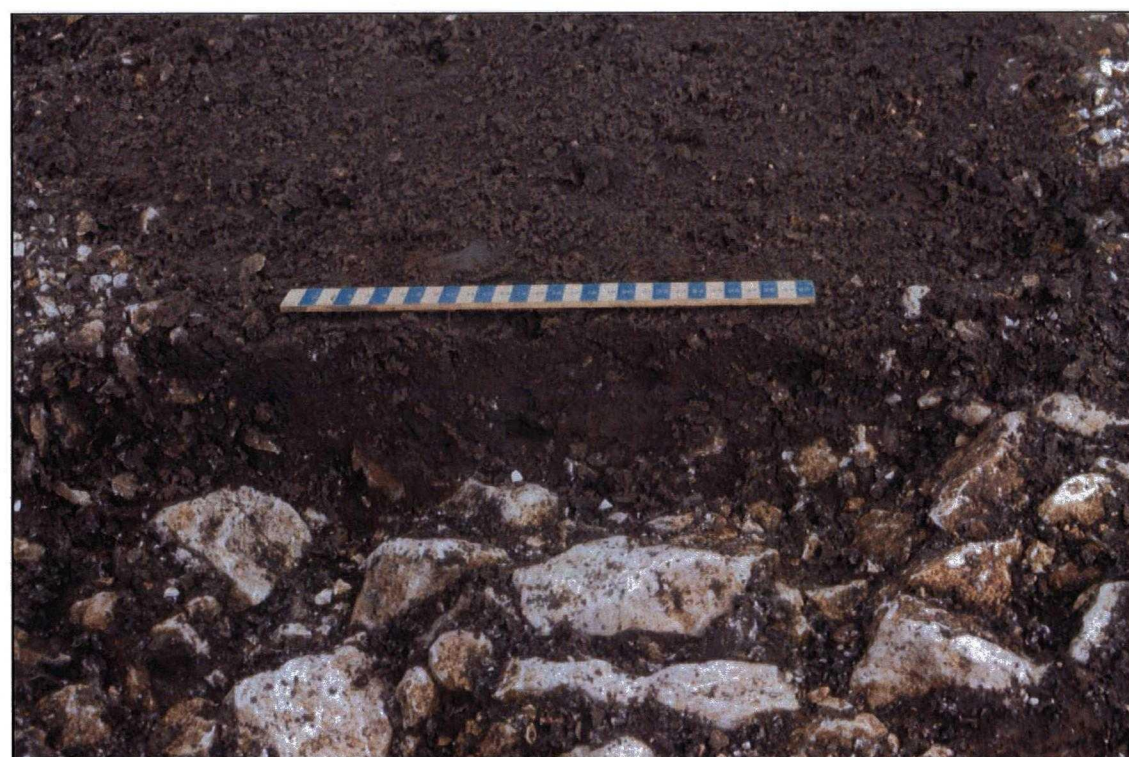


Plate 3. East facing section (109), through circular ditch 1337 (Area C)



Plate 4. South facing section (124), through circular ditch 1367 (Area C)



Plate 5. Northwest facing section (1), showing pit 1002 truncating ditch 1004 (Area B)



Plate 6. Southeast facing section (3) through ditch 1022 (Area B)



Plate 7. Northwest facing section (40), through ditches 1153, 1158, and 1241 (Area B)



Plate 8. Working shot taken during the excavation of the eastern Argham Dyke (ditch 1177-1402), looking southwest (Area B)

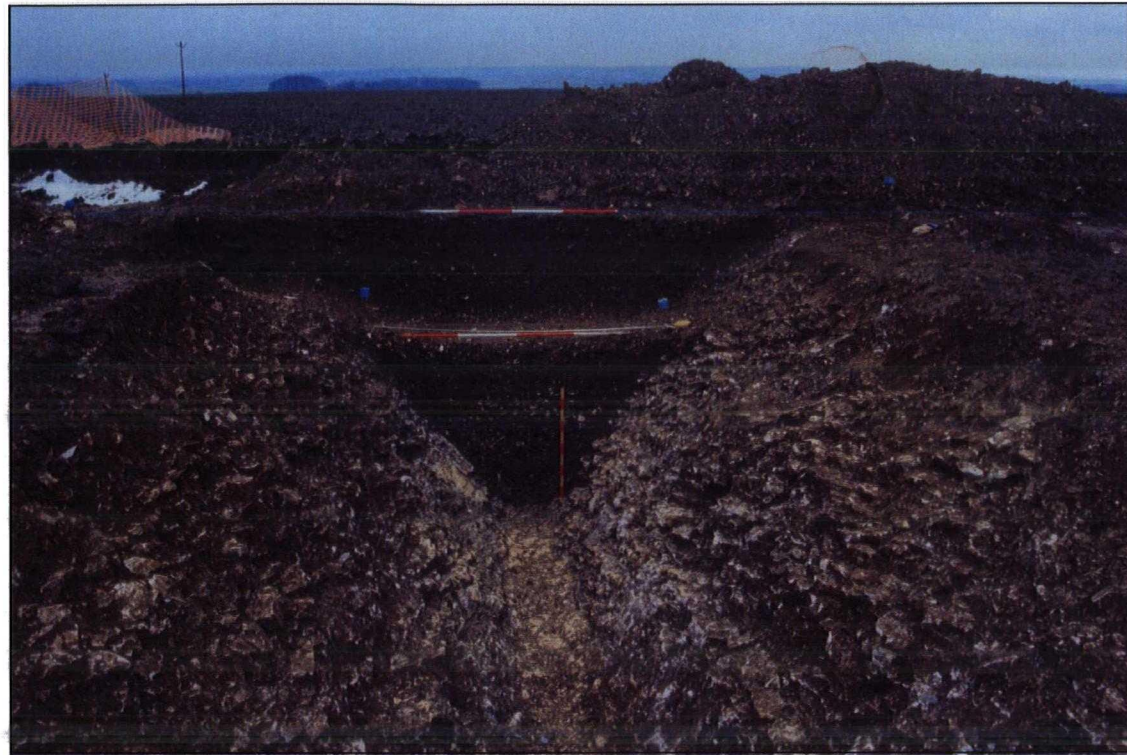


Plate 9. Northeast facing sections (58 a-b), through the eastern Argham Dyke (ditch 1177-1402), looking southwest (Area B)



Plate 10. Northeast facing sections (59 a-b), through the western Argham Dyke (ditch 1200-1403), looking southwest (Area B)

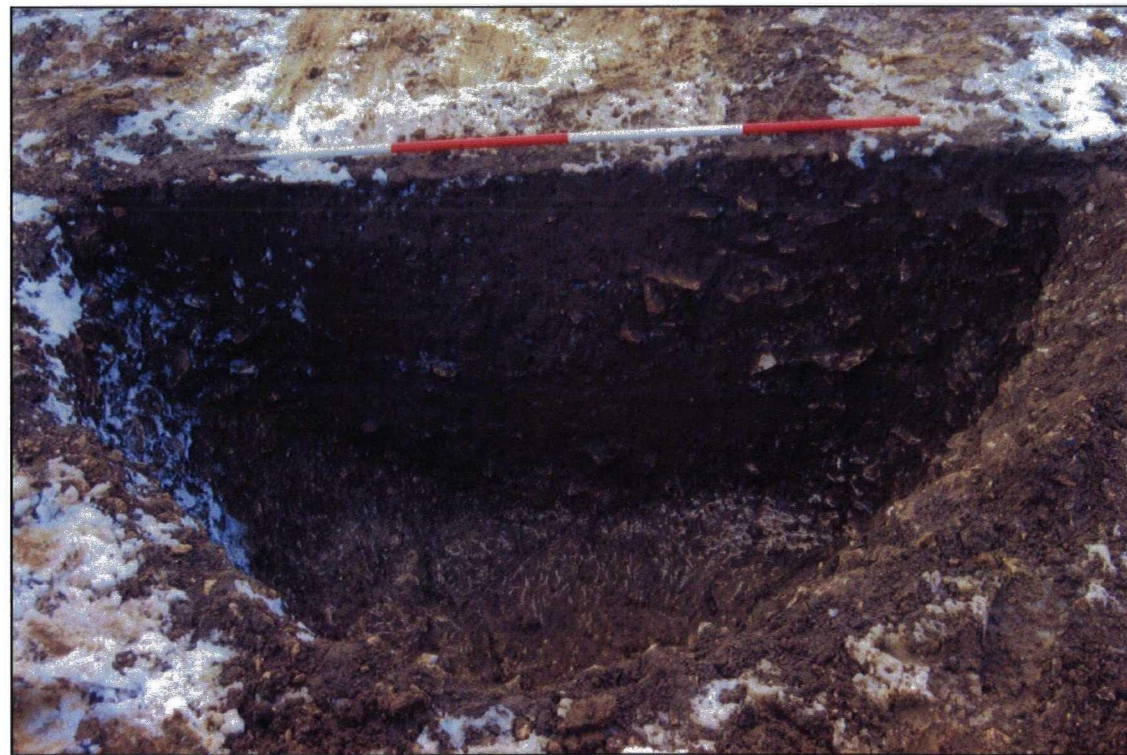


Plate 11. Southwest facing section (23), through quarry pit 1083 (Area B)

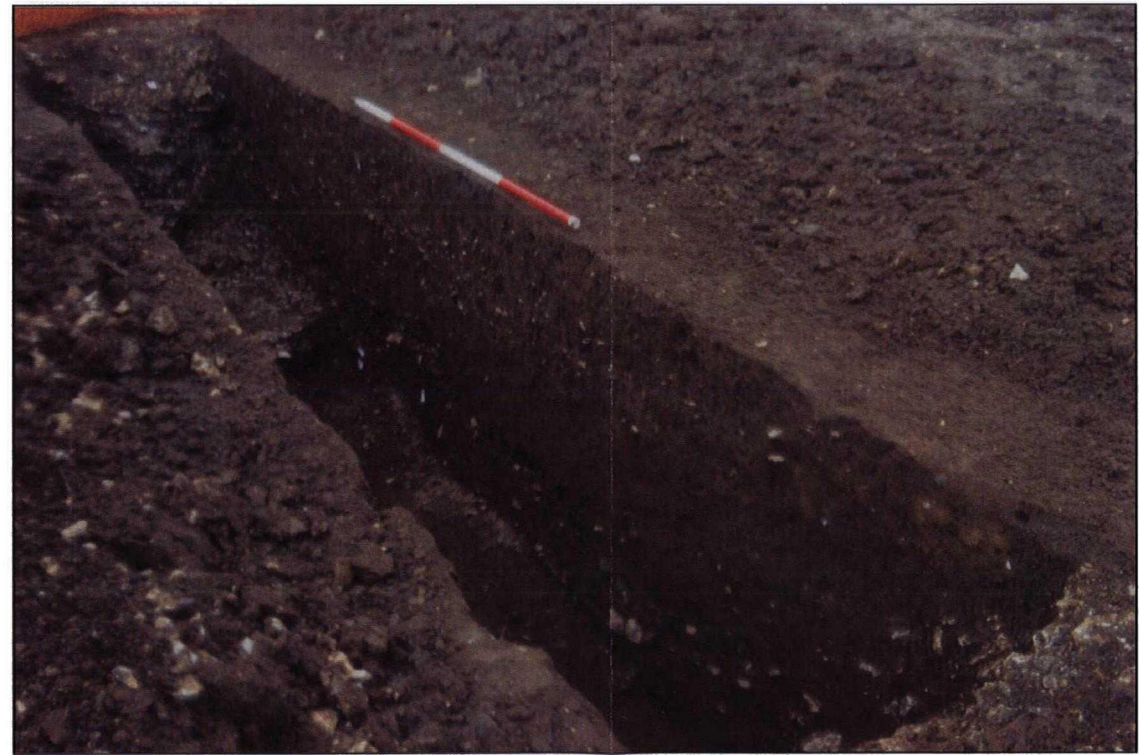


Plate 12. Northwest facing section (31), through quarry pit 1093 (Area B)



Plate 13. Pill box 1, looking south southwest (Area E)



Plate 14. Pill box 1, looking east southeast (Area E)



Plate 15. Pill box 2, looking east northeast (Area E)



Plate 16. Pill box 2, looking north northwest (Area E)



Plate 17. Trench D1, looking northwest



Plate 18. Trench D2, looking northwest



Plate 19. Stretch of the proposed A165 Bypass looking northwest (Areas F2, F3)



Plate 20. Working shot, after a snow storm looking southeast (Area B)



Plate 21. Quern stone found during the removal of topsoil in area B (unstratified)



Plate 22. Copper alloy button and loop fastener found in ditch 1030 (Area B)

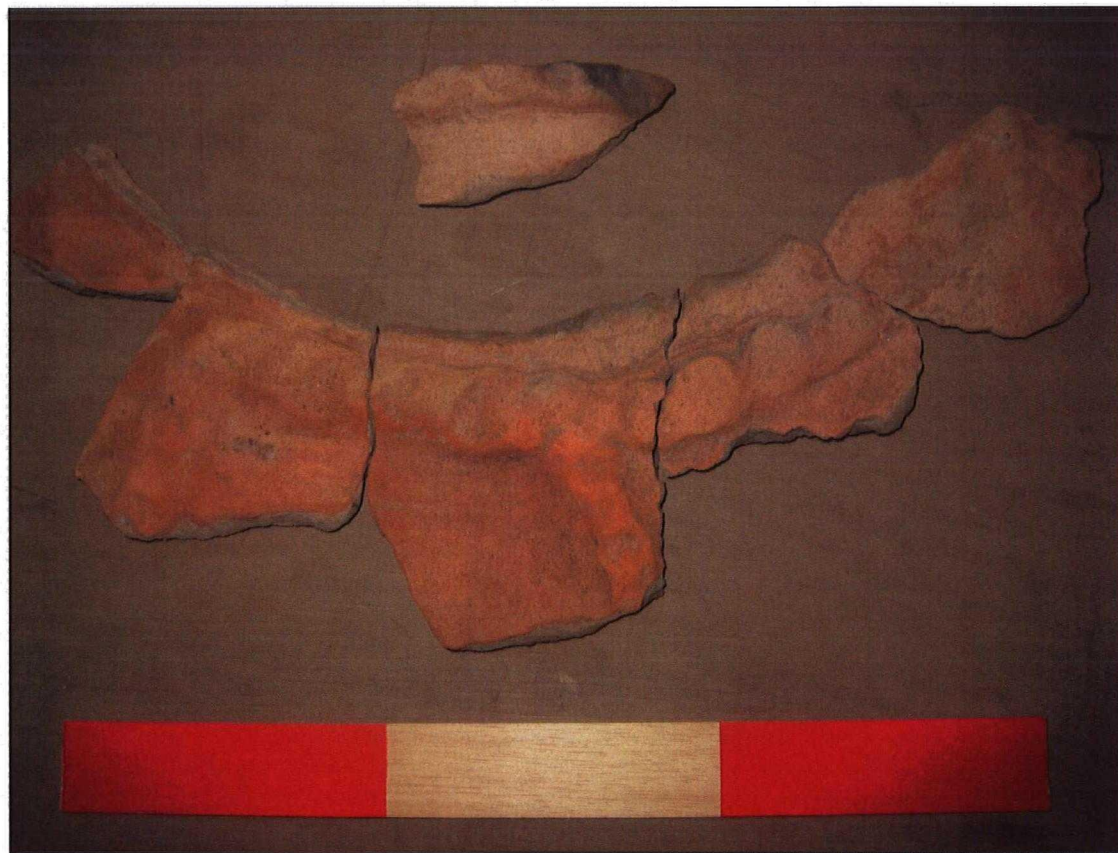


Plate 23. Decorated neck of large medieval vessel (5003) recovered during the watching brief in Area F2



Plate 24. Reconstructed body sherds of the large medieval vessel (5003)

**APPENDIX D:
FIGURES**

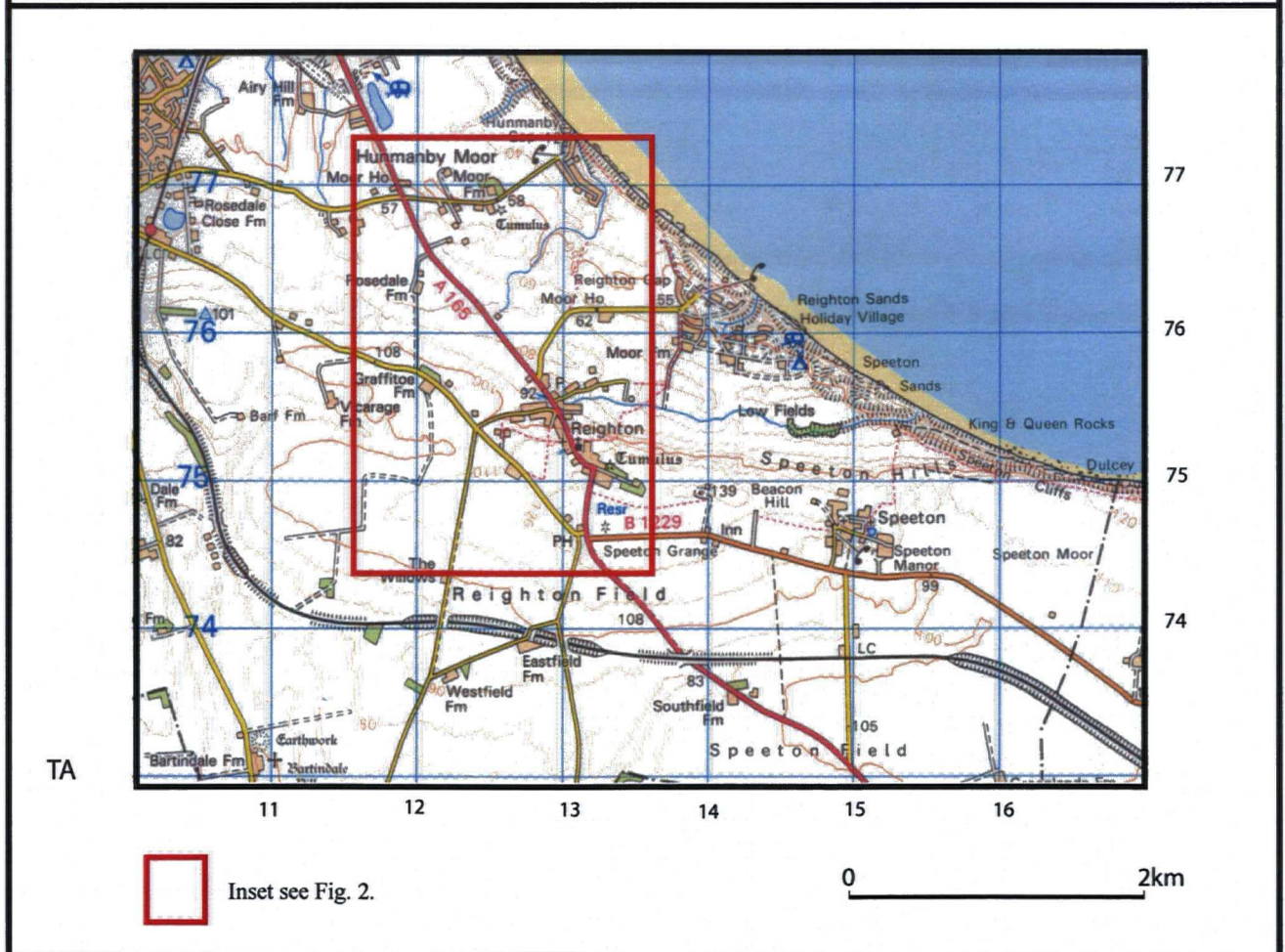
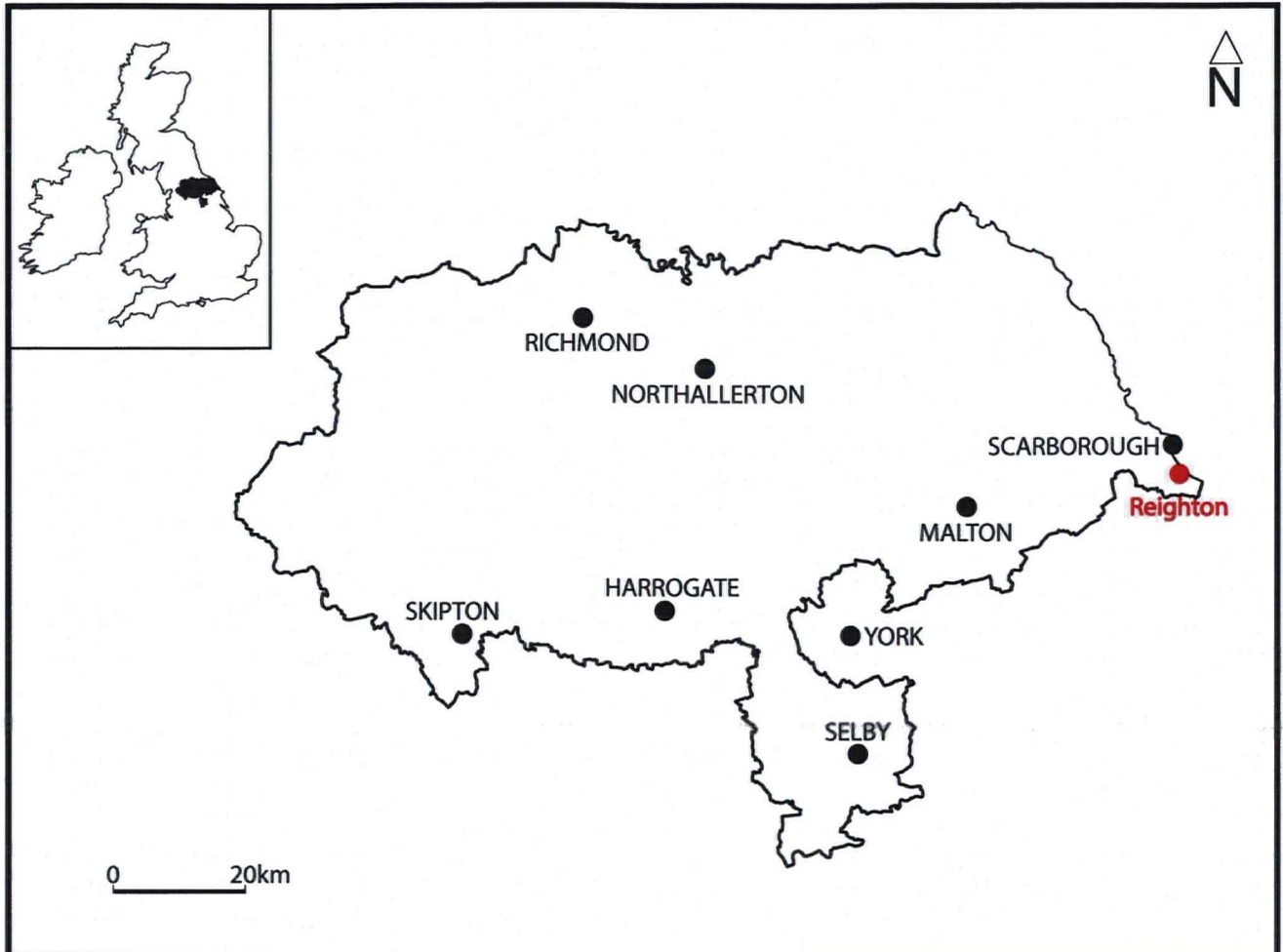
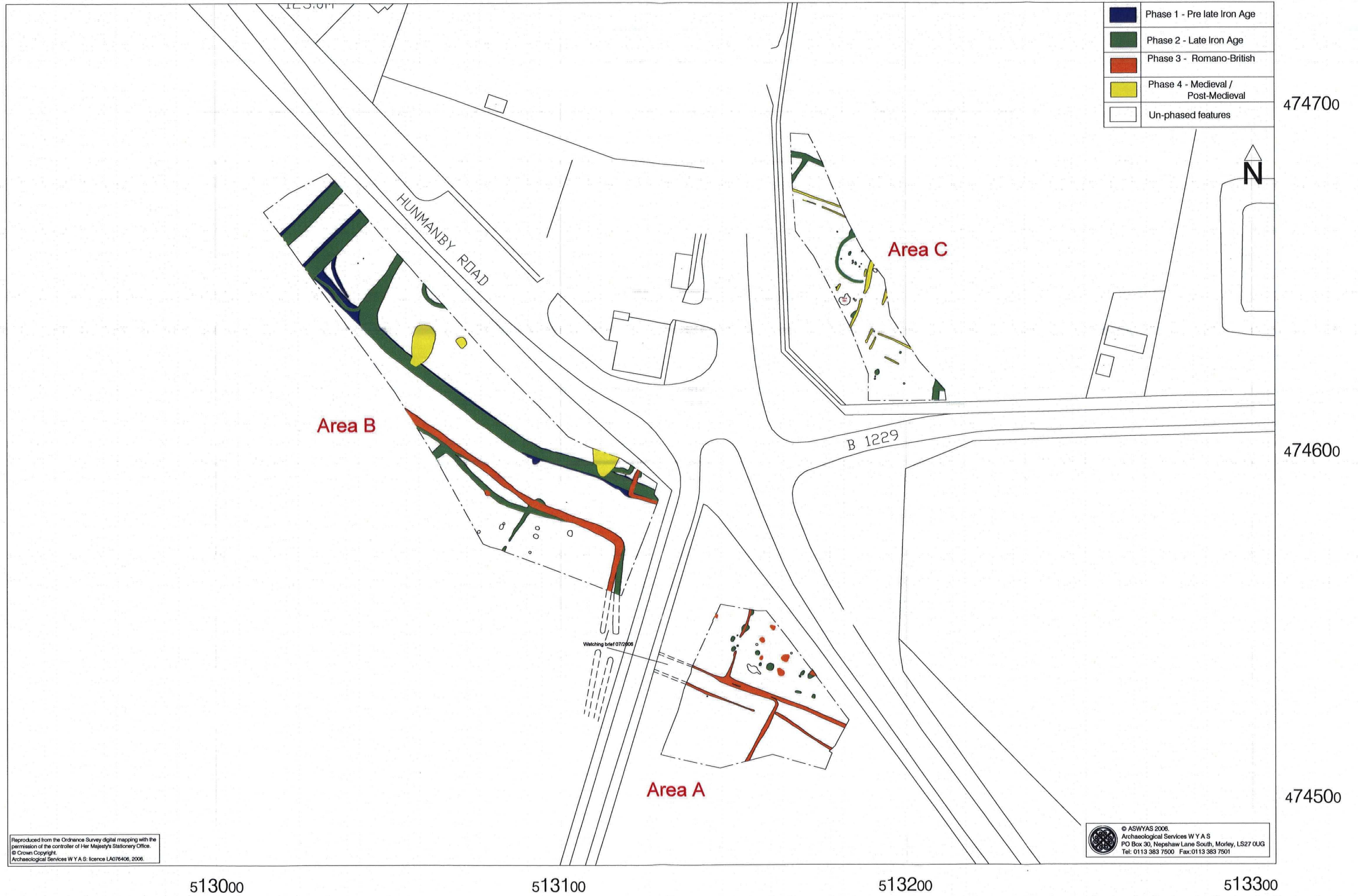


Fig. 1. Site location

Reproduced with the permission of the controller of Her Majesty's Stationery Office © Crown Copyright. Archaeological Services WYAS: licence LA076406, 2006.



Reproduced from the Ordnance Survey digital mapping with the permission of the controller of Her Majesty's Stationery Office.
 © Crown Copyright.
 Archaeological Services W Y A S: licence LA076406, 2006.

© ASWYAS 2006.
 Archaeological Services W Y A S
 PO Box 30, Nephaw Lane South, Morley, LS27 0UG
 Tel: 0113 383 7500 Fax: 0113 383 7501

Fig. 3. Location and phased plan of areas A, B, and C (1: 1000 scale)



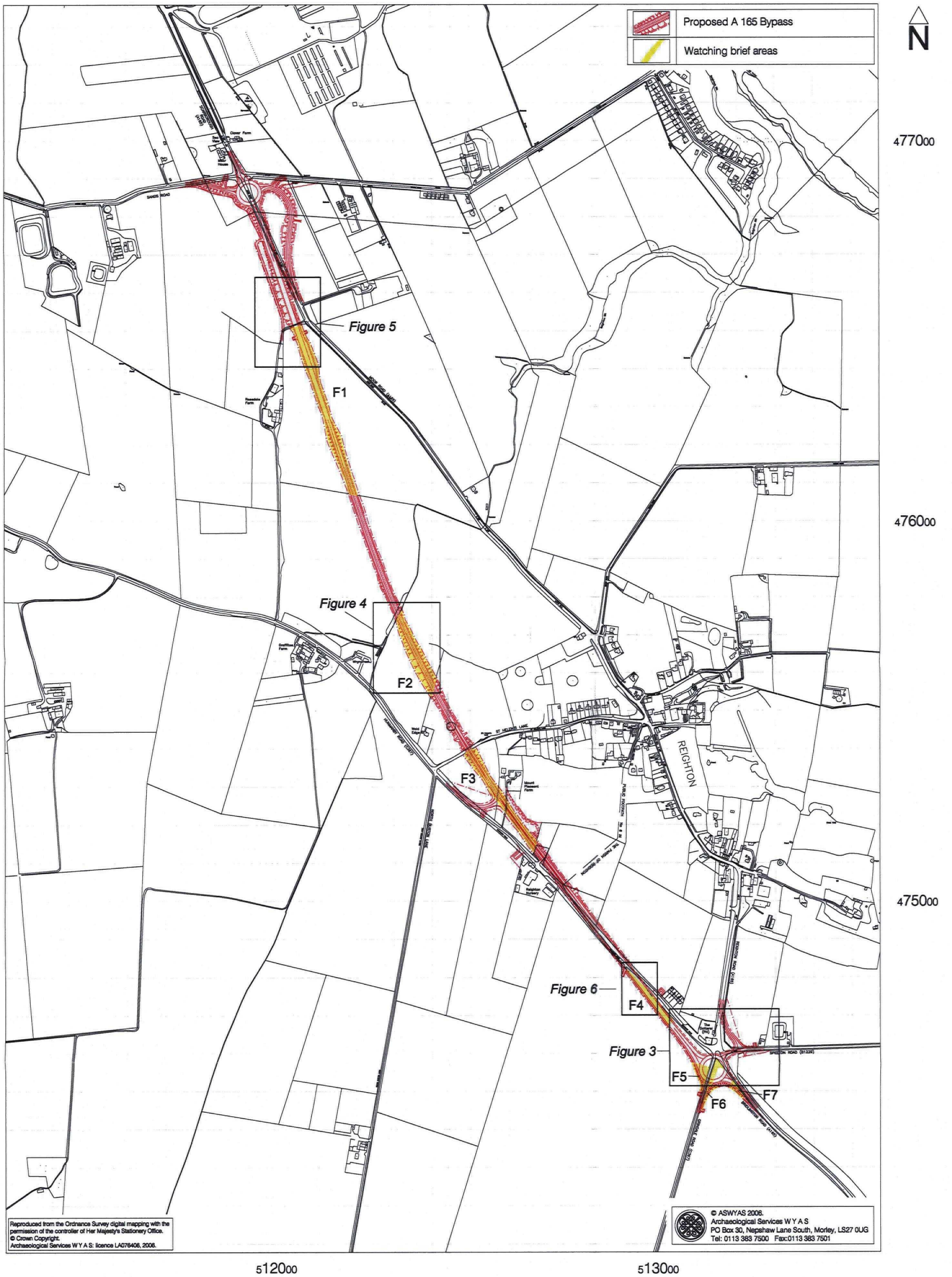


Fig. 2. Location of the proposed road (scale 1:10000)

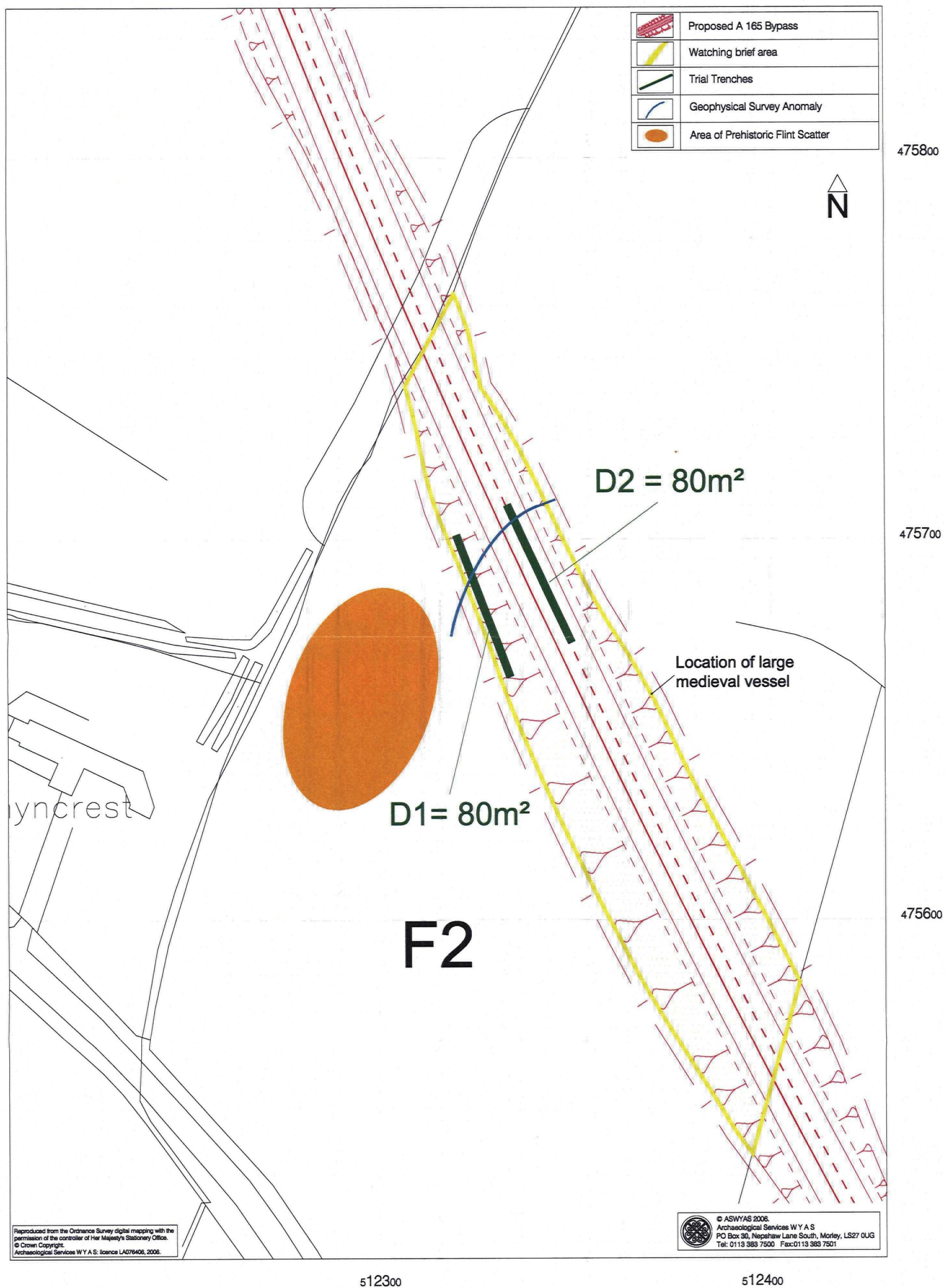


Fig. 4. Location of area D (scale 1:1000)

0 50m