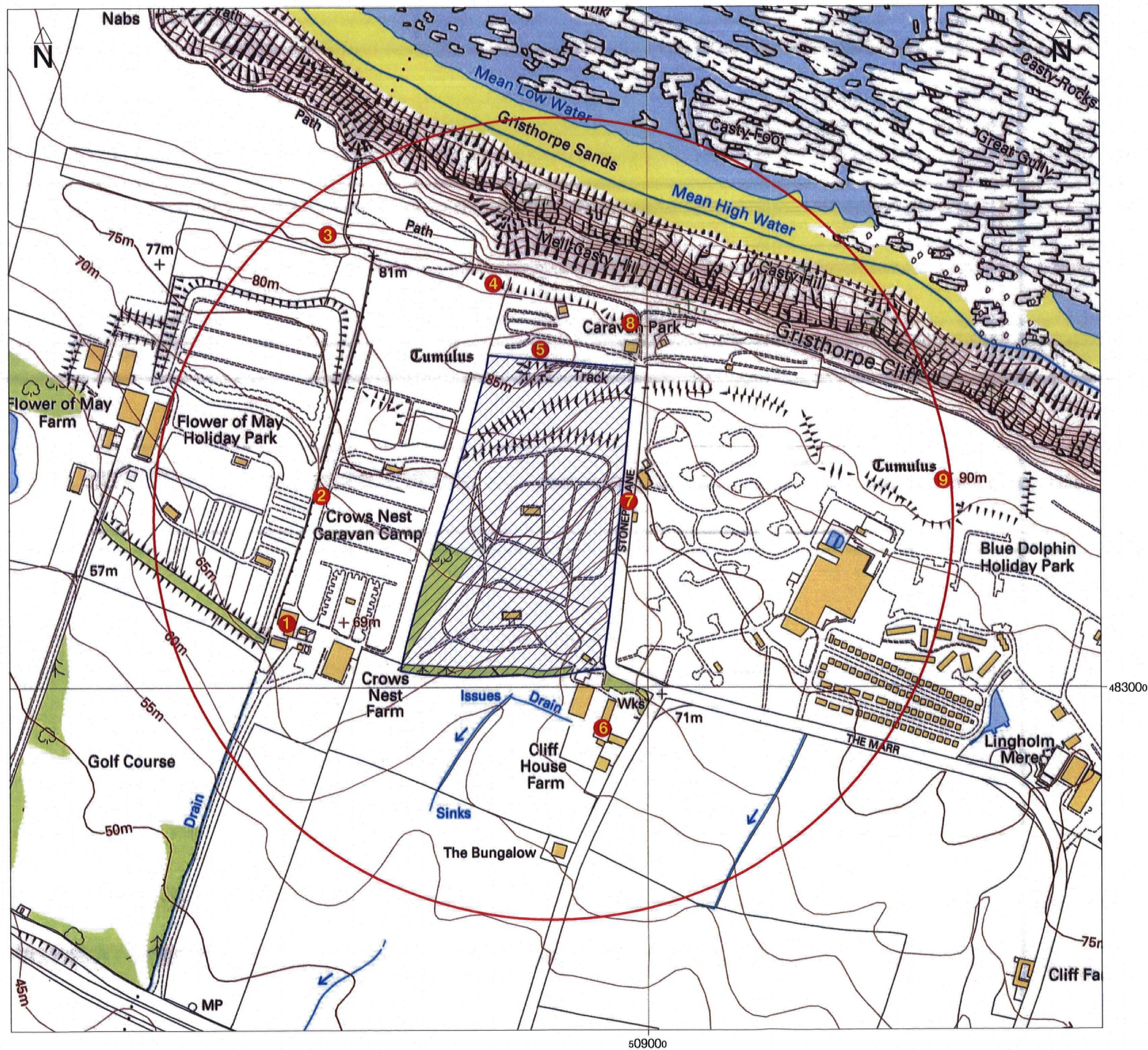


Fig. 1. Site location

Reproduced with the permission of the controller of Her Majesty's Stationery Office © Crown Copyright. Archaeological Services WYAS: licence LA076406, 2007.



	limit of study area
	catalogued archaeological feature
	proposed redevelopment area

© ASWYAS 2006.  
 Archaeological Services W Y A S  
 PO Box 30, Nephaw Lane South, Morley, LS27 0UG  
 Tel: 0113 383 7500 Fax: 0113 383 7501  
 Based on Ordnance Survey digital mapping with the permission of the controller of Her Majesty's Stationery Office.  
 © Crown Copyright.  
 Archaeological Services W Y A S: licence LA076406, 2006.

Fig. 2. Site location showing the study area and proposed redevelopment area with catalogue numbers (1:5000 scale)

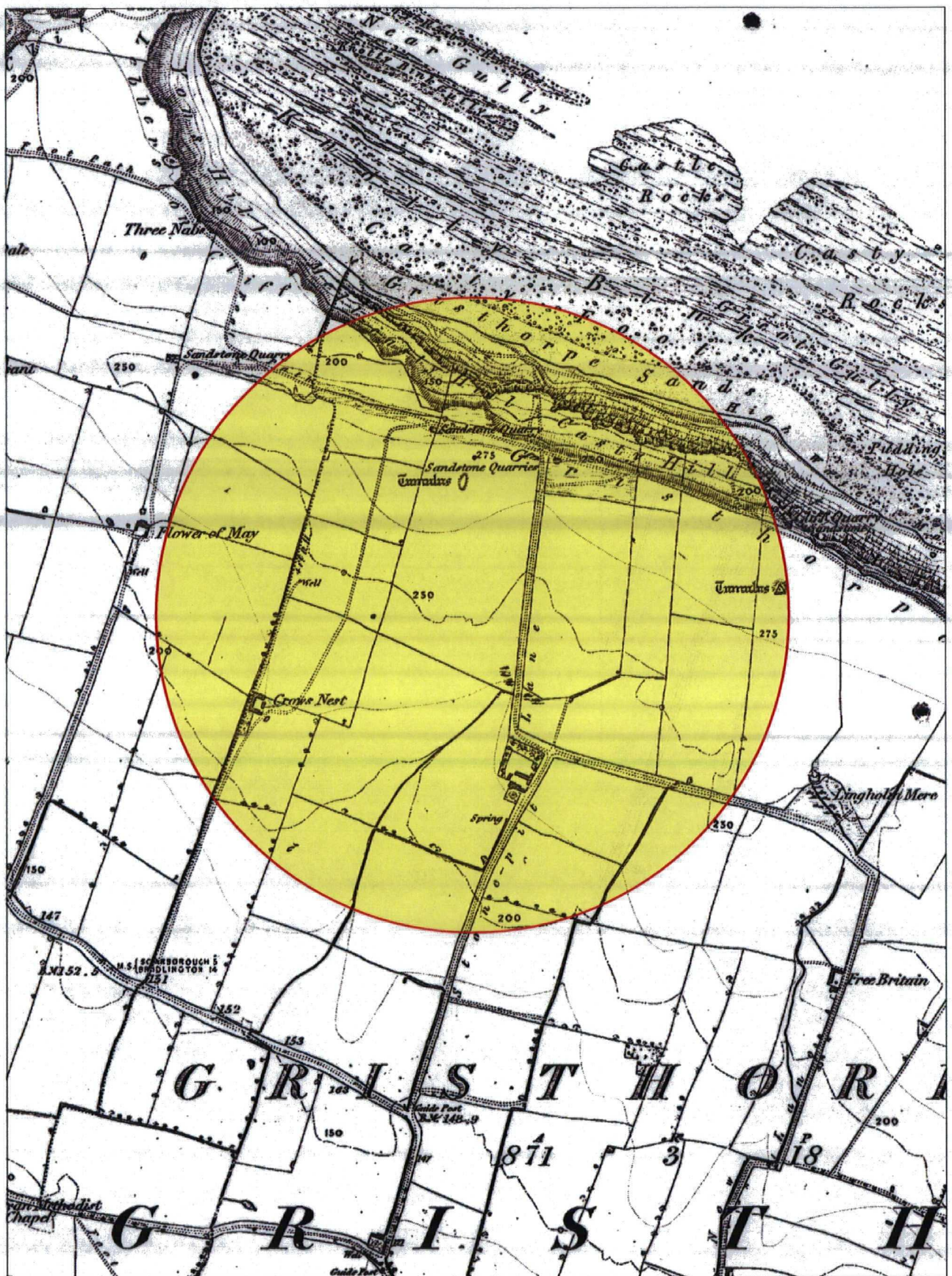


Fig. 3. Extract from the 1854 First Edition 6 inch Ordnance Survey map, with the study area highlighted (sheet 94)



Fig. 4. Combined extracts from the 1893 6 inch Ordnance Survey maps, with the study area highlighted (sheets 94SW and 94SE)

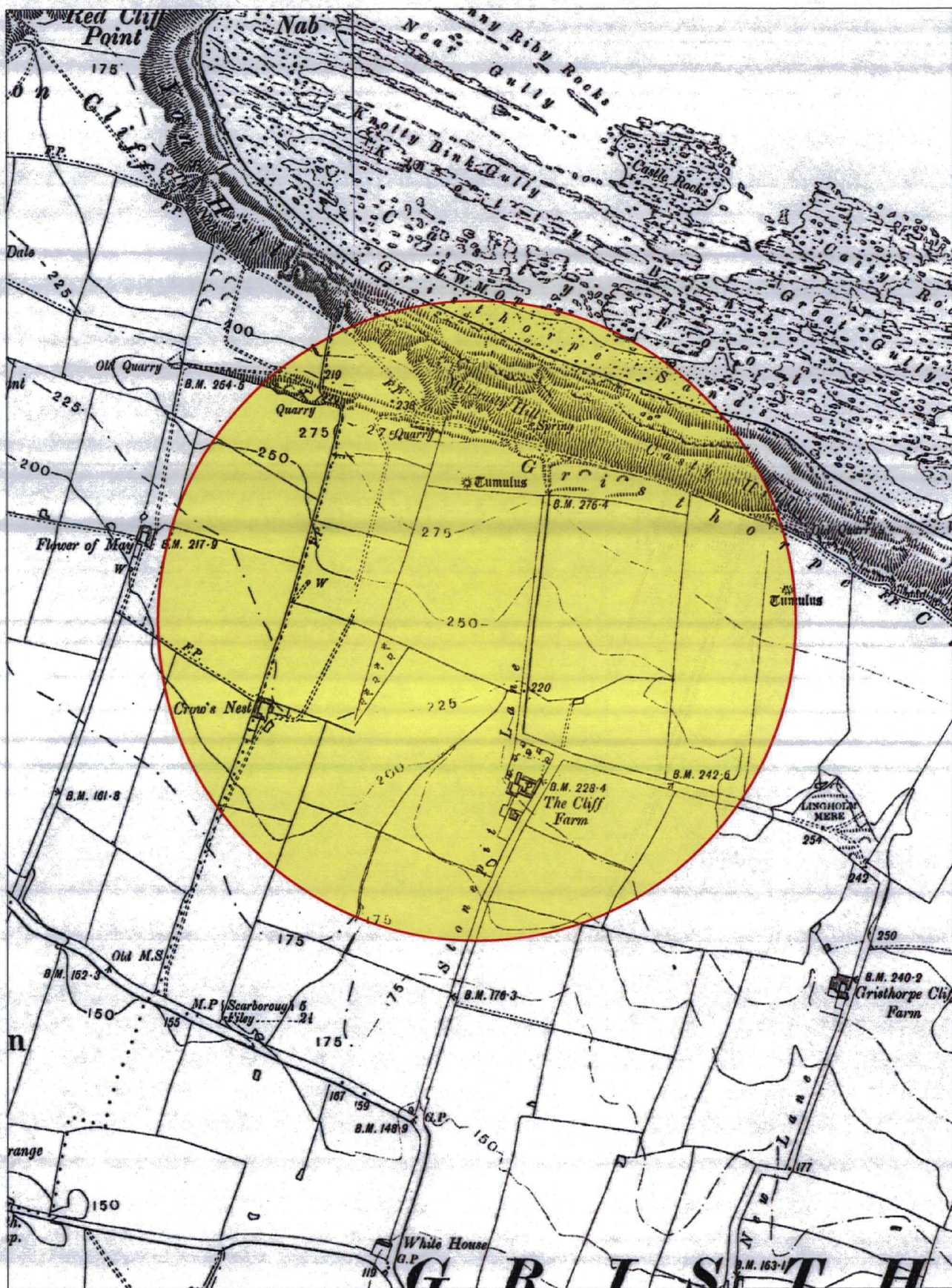


Fig. 5. Combined extracts from the 1912 and 1913 6 inch Ordnance Survey maps, with the study area highlighted (sheets 94SW and 94SE)

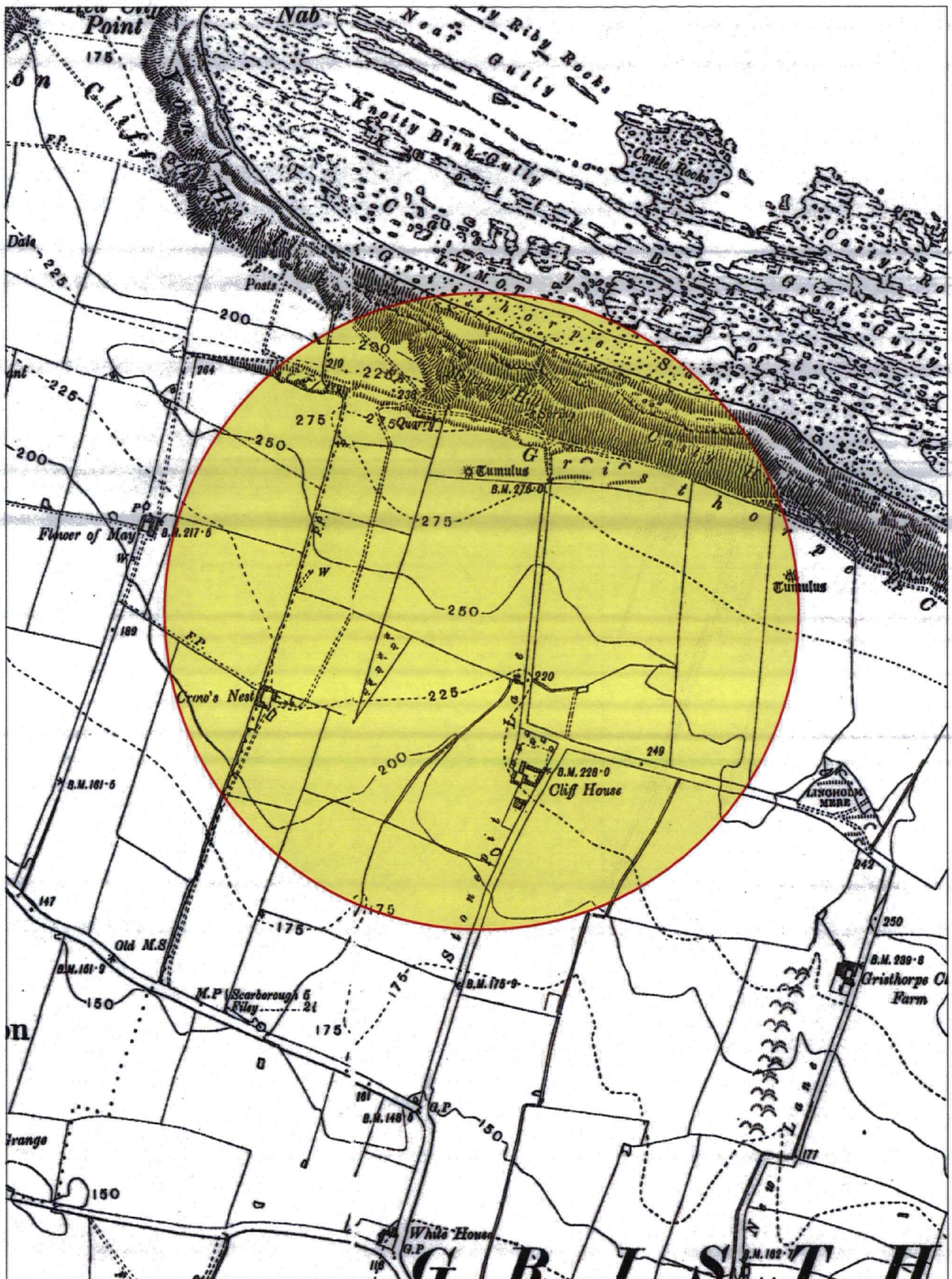


Fig. 6. Combined extracts from the 1929 6 inch Ordnance Survey maps, with the study area highlighted (sheets 94SW and 94SE)



*Plate 1. The proposed redevelopment area, looking south-east*



*Plate 2. The proposed redevelopment area, looking south-west*



*Plate 3. The proposed redevelopment area, looking north-west*

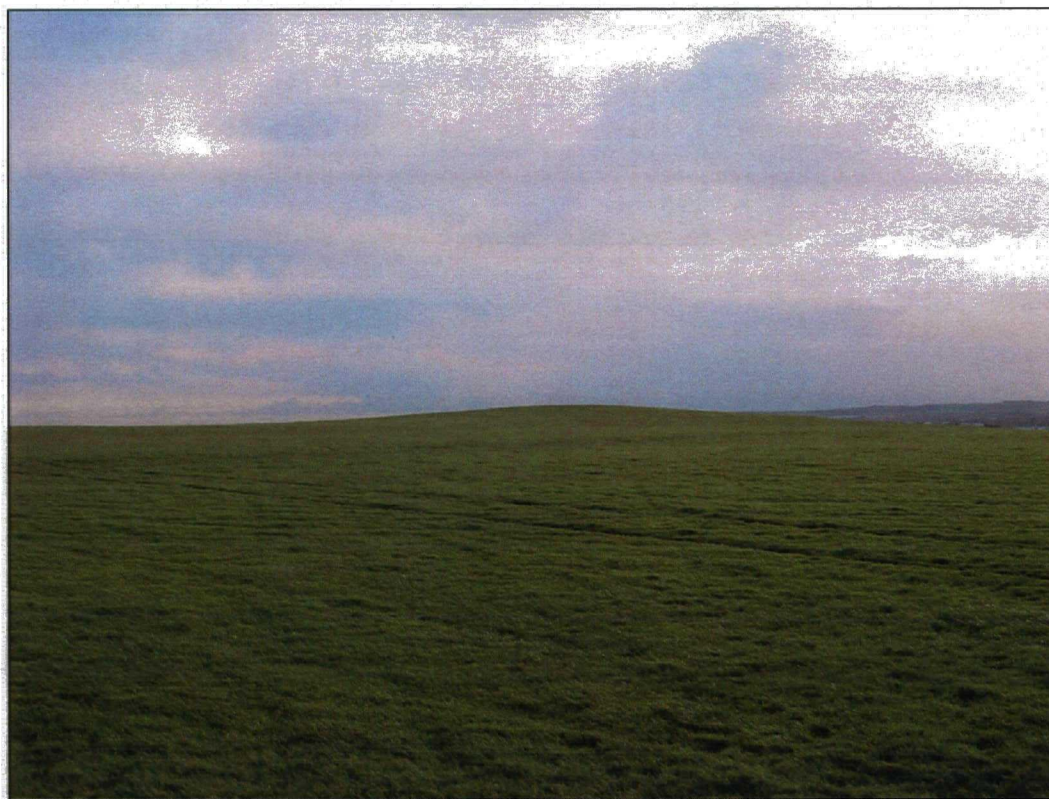


*Plate 4. Site of a former sandstone quarry, on the cliff side to the north of the proposed redevelopment area*





*Plate 5. The barrow on the east side of the Blue Dolphin Holiday Park, looking south*



*Plate 6. The barrow on the east side of the Blue Dolphin Holiday Park, looking south-east*