

Figure 1. Site Location

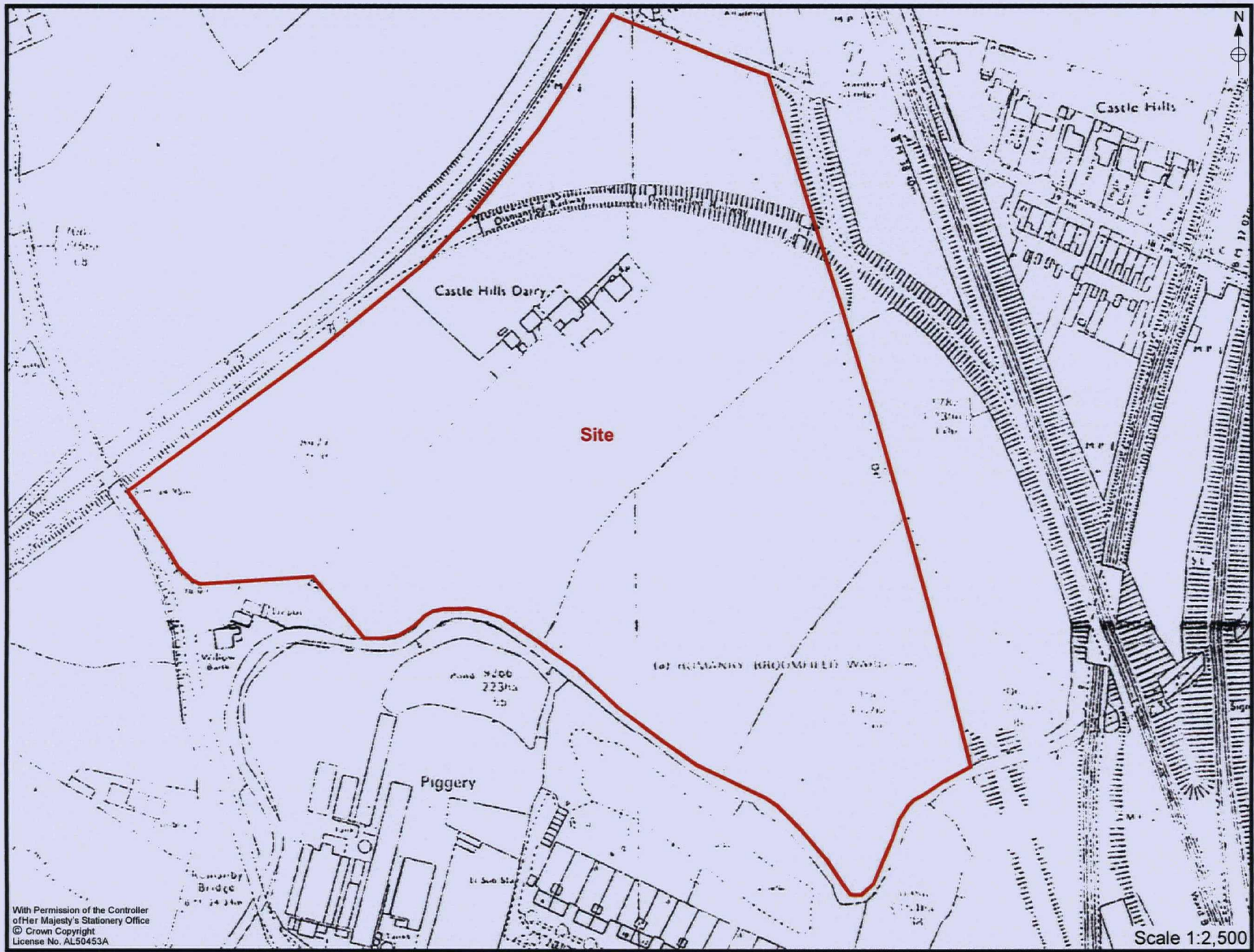


Figure 2. Area of Proposed Development

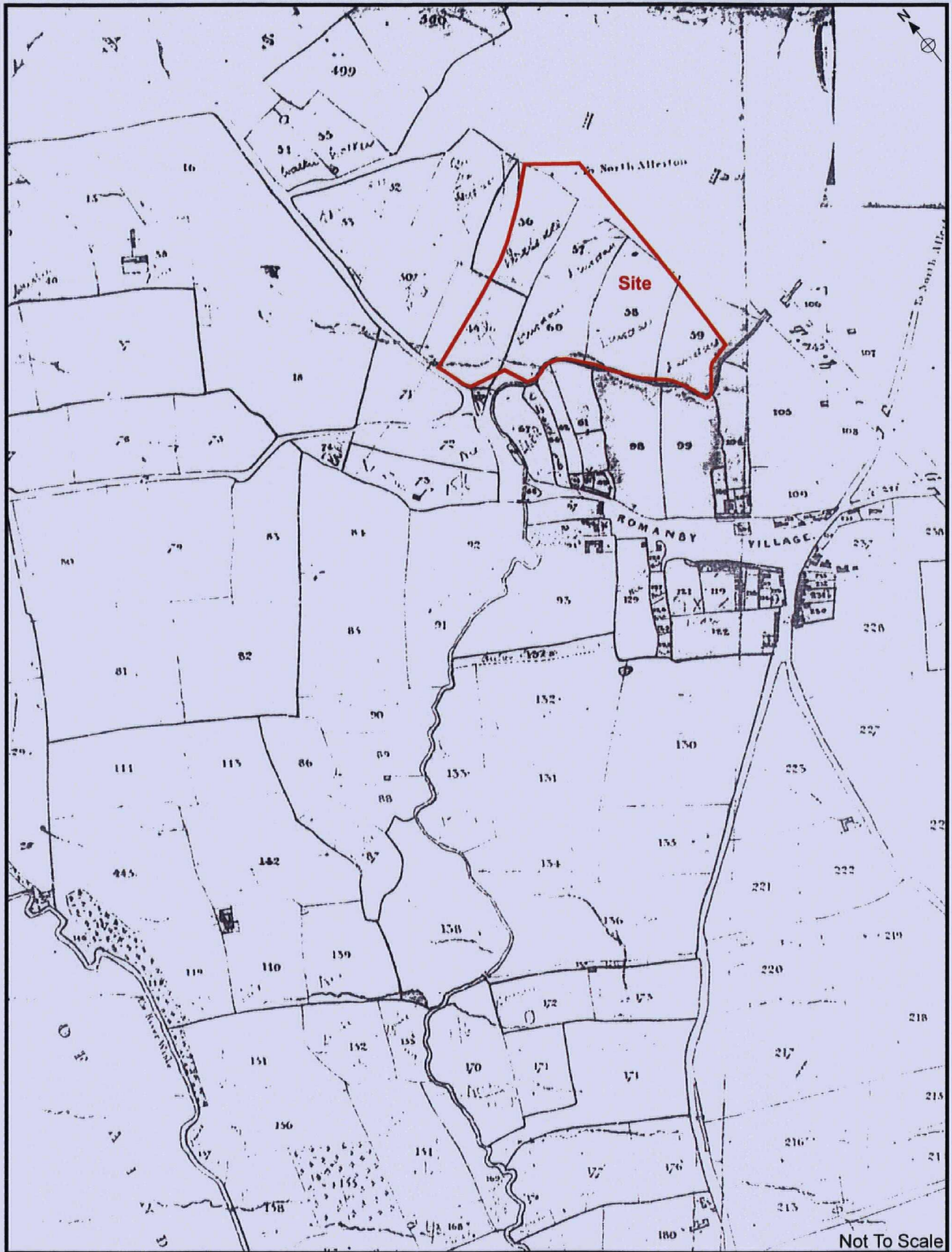


Figure 3. Extract from the 1839 Tithe Award Map for Romanby

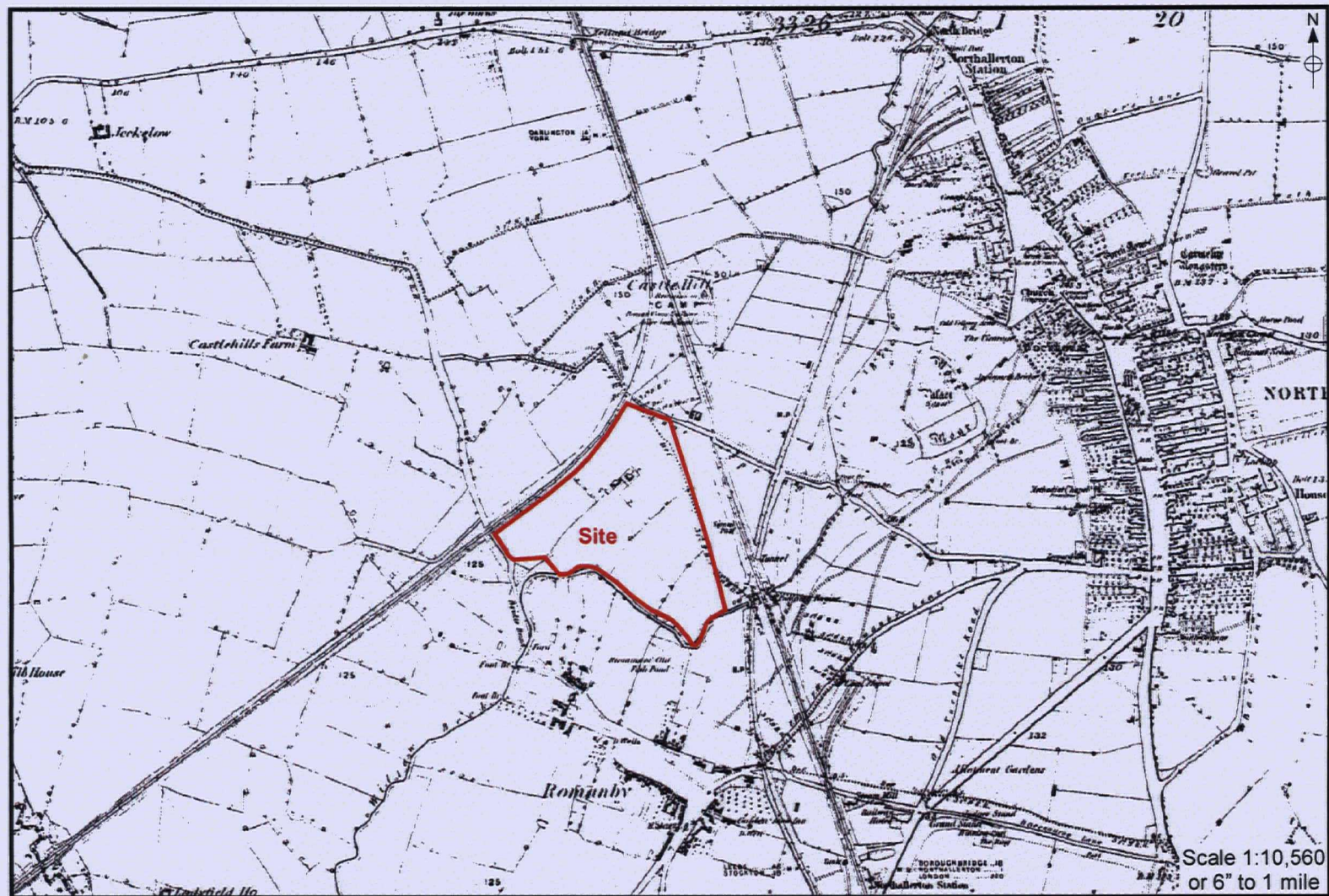


Figure 4. Extract from the 1857 First Edition Ordnance Survey Map

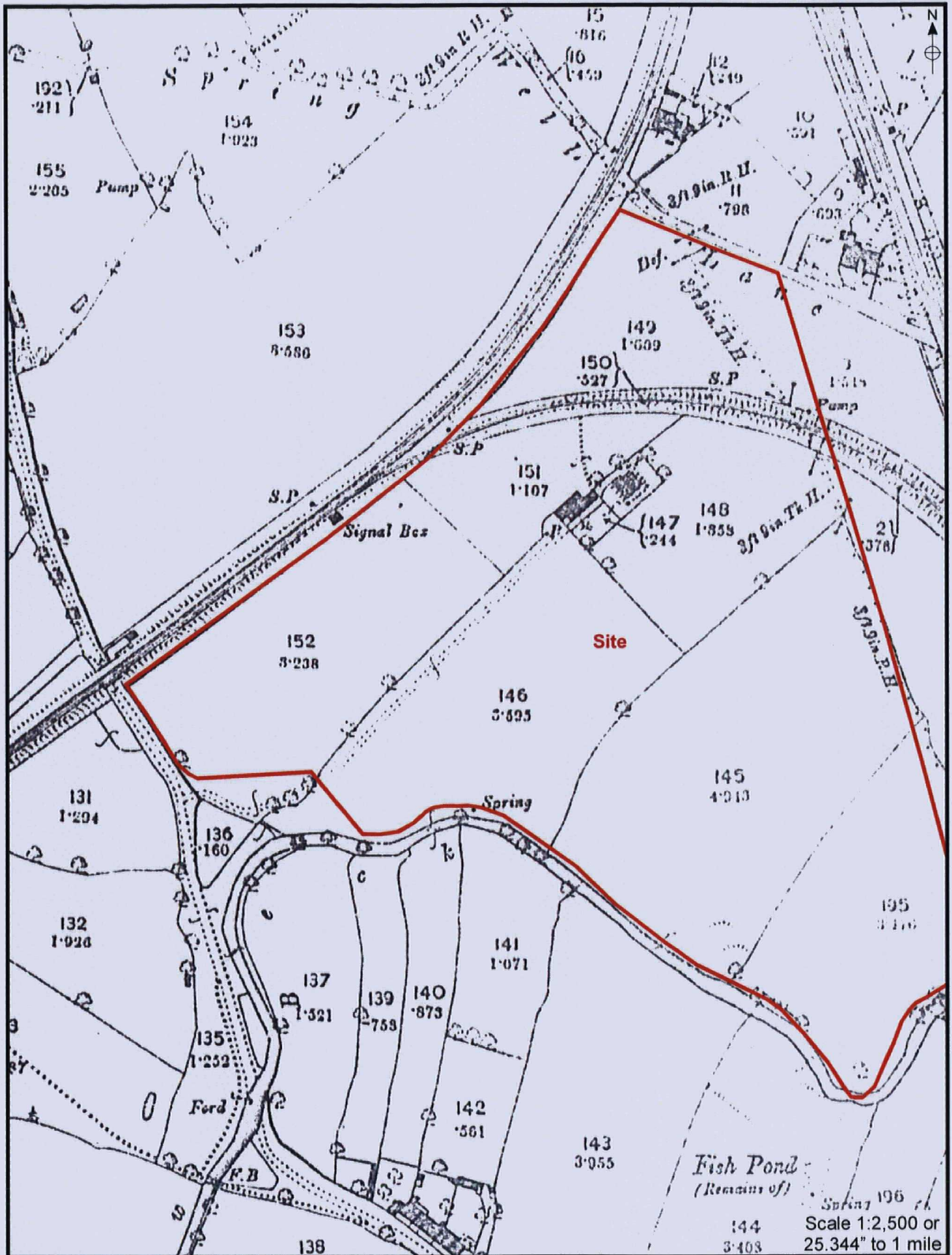


Figure 5. Extract from the 1893 Edition Ordnance Survey Map

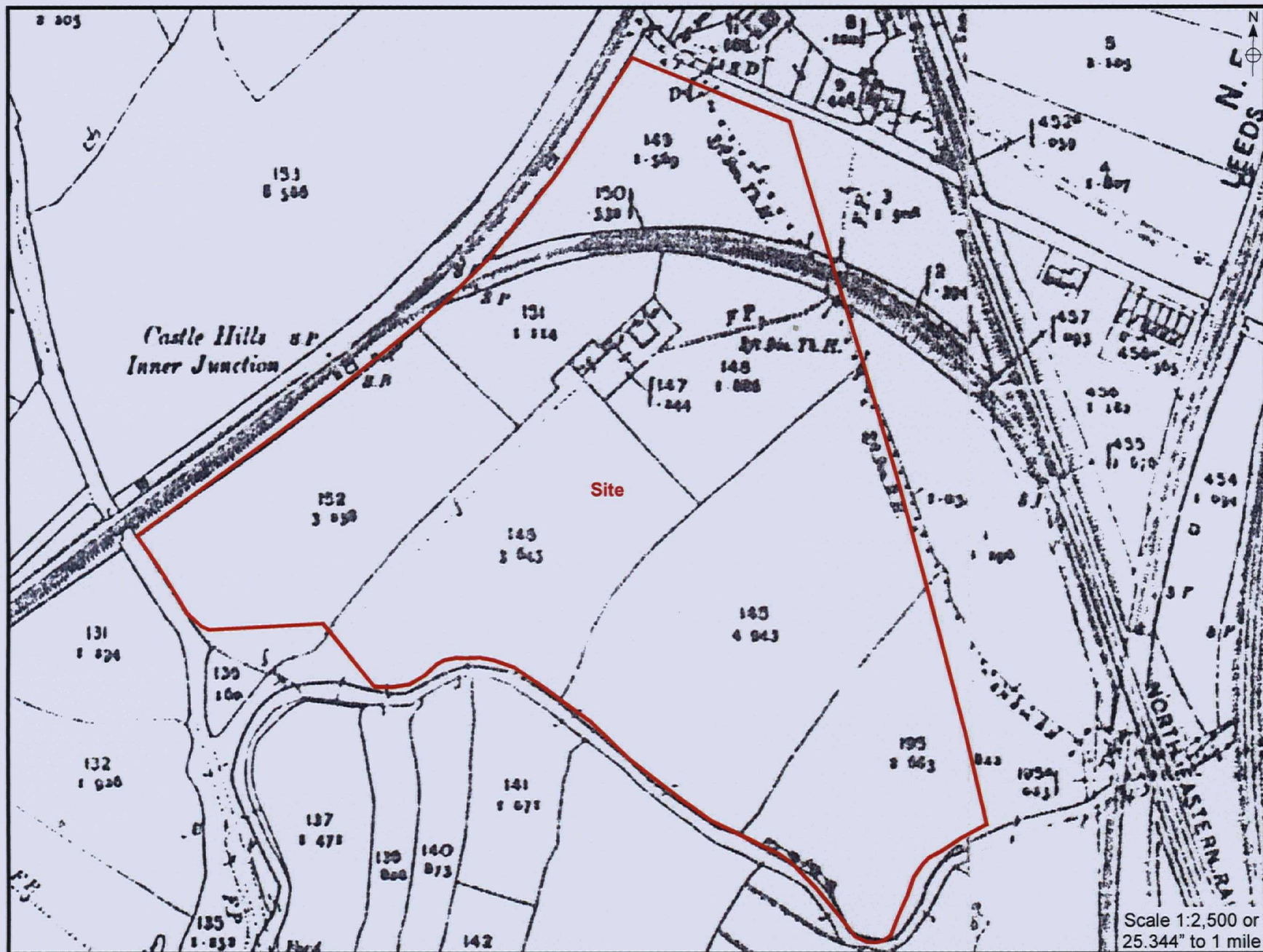


Figure 6. Extract from the 1913 Edition Ordnance Survey Map 32

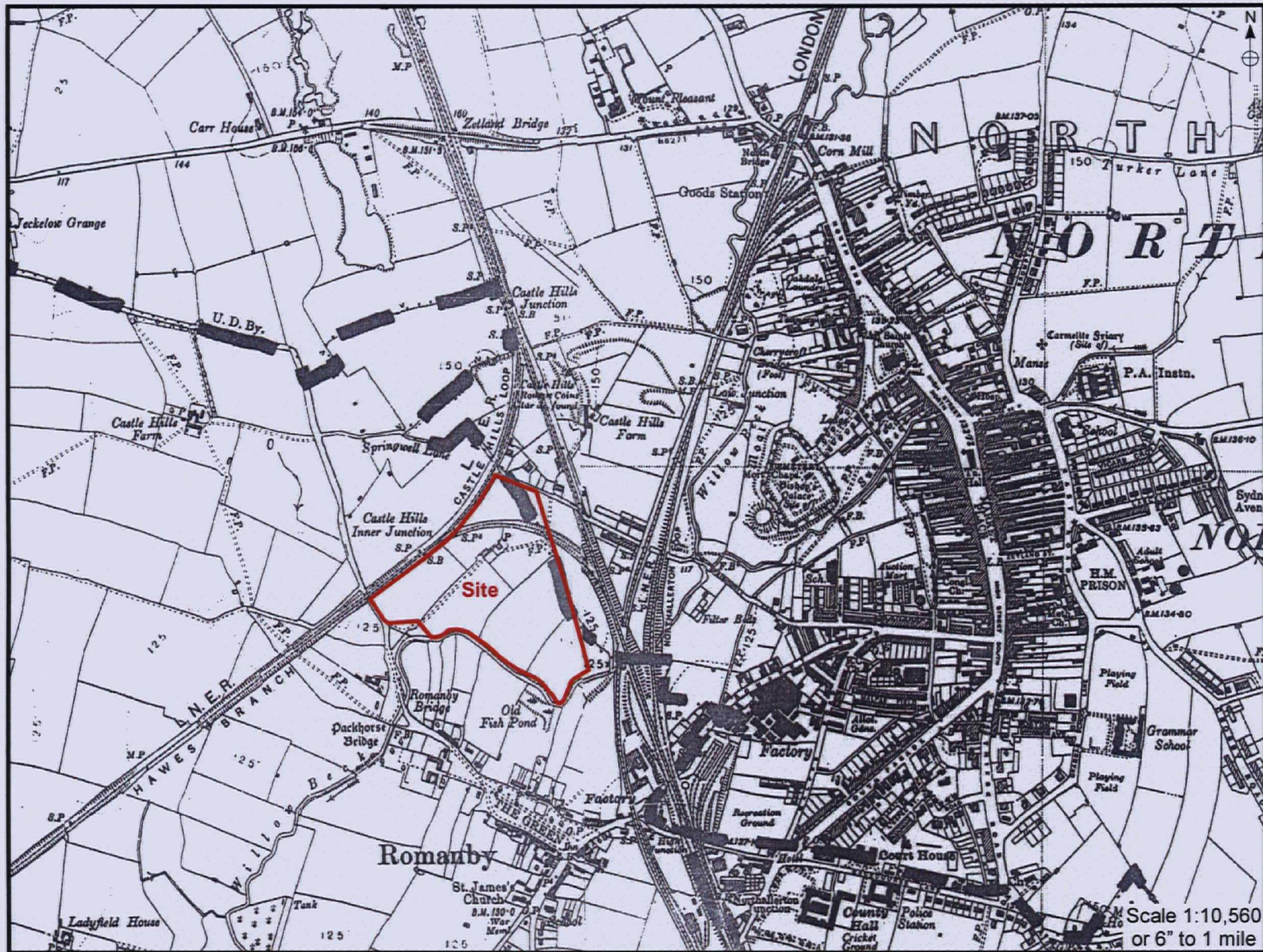


Figure 7. Extract from the 1930 and 1938 Editions Ordnance Survey Map



Figure 8. Extract from the 1958 Edition Ordnance Survey Map 34

MAP 02-03-07

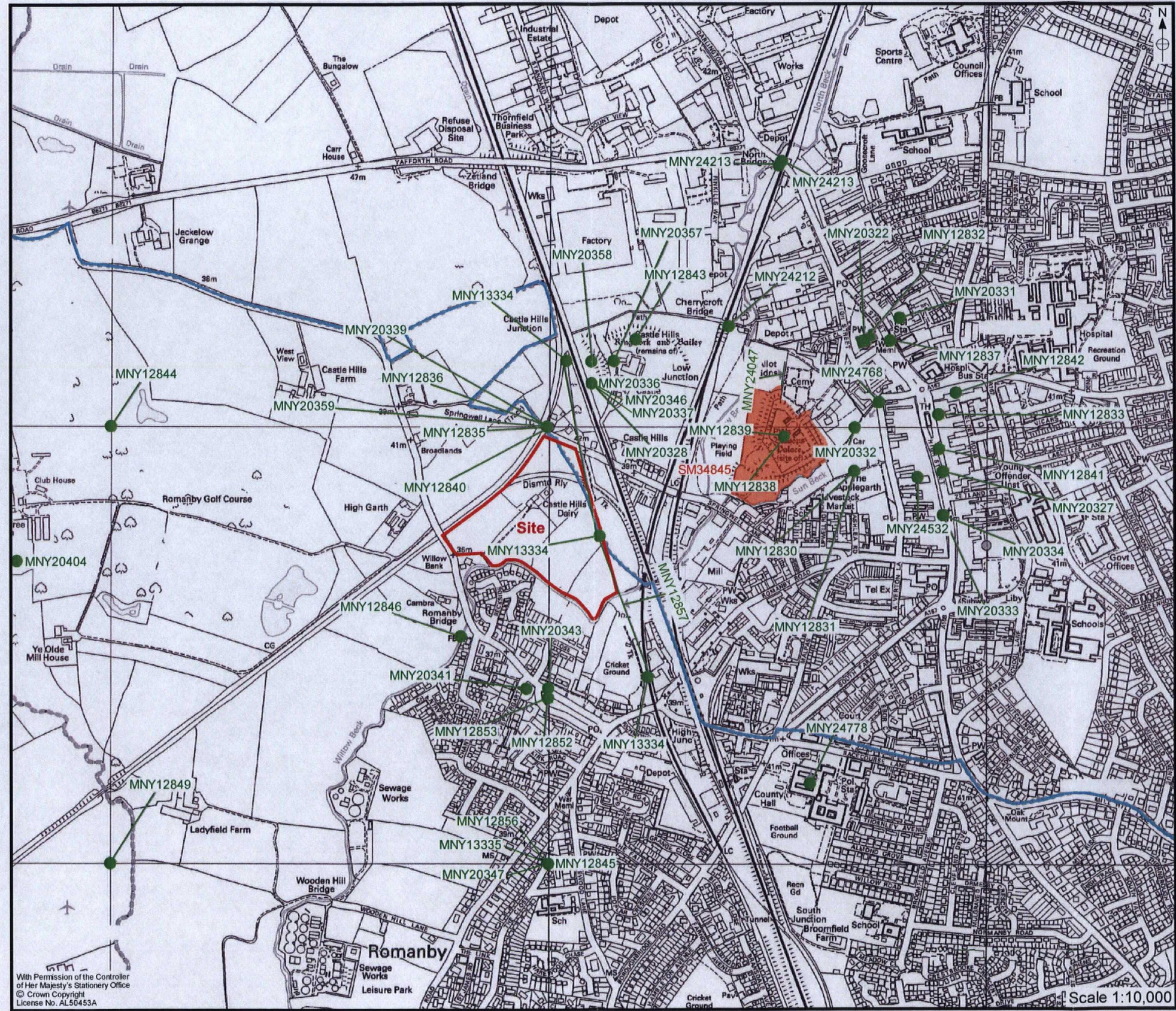
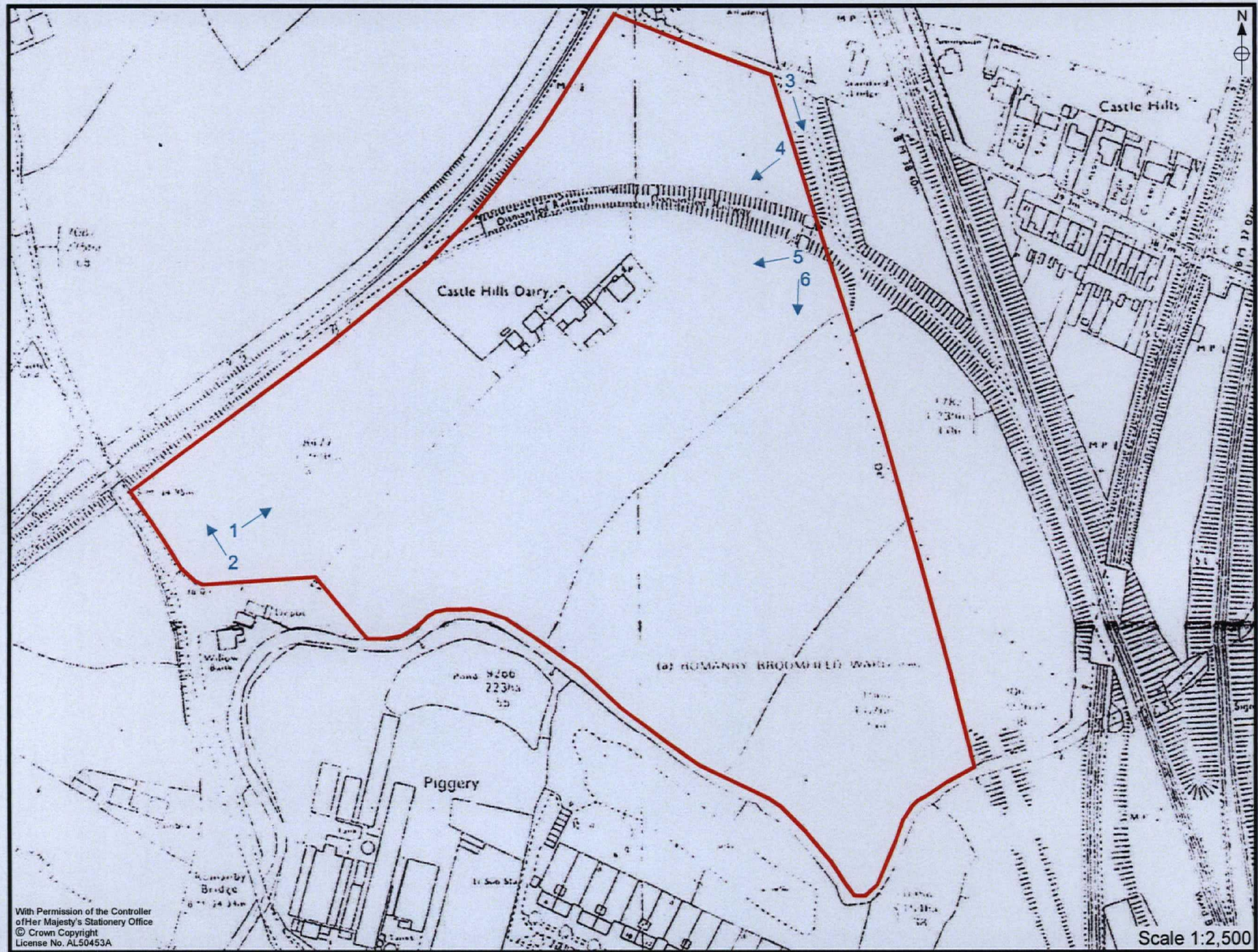


Figure 9. Sites of Historical and Archaeological Importance



With Permission of the Controller
of Her Majesty's Stationery Office
© Crown Copyright
License No. AL50453A

Scale 1:2,500

Figure 10. Location of Plates



Plate 1. View of Proposed Development Area. Facing North East



Plate 2. View of Proposed Development Area and Railway Line. Facing North



Plate 3. View of Dismantled Railway Line. Facing South



Plate 4. View of Castle Hills Dairy. Facing South West



Plate 5. View of Castle Hills Dairy. Facing West



Plate 6. View of Proposed Development Area. Facing South