

Fig. 1. Site location

Reproduced with the permission of the controller of Her Majesty's Stationery Office © Crown Copyright. Archaeological Services WYAS: licence LA076406, 2007.



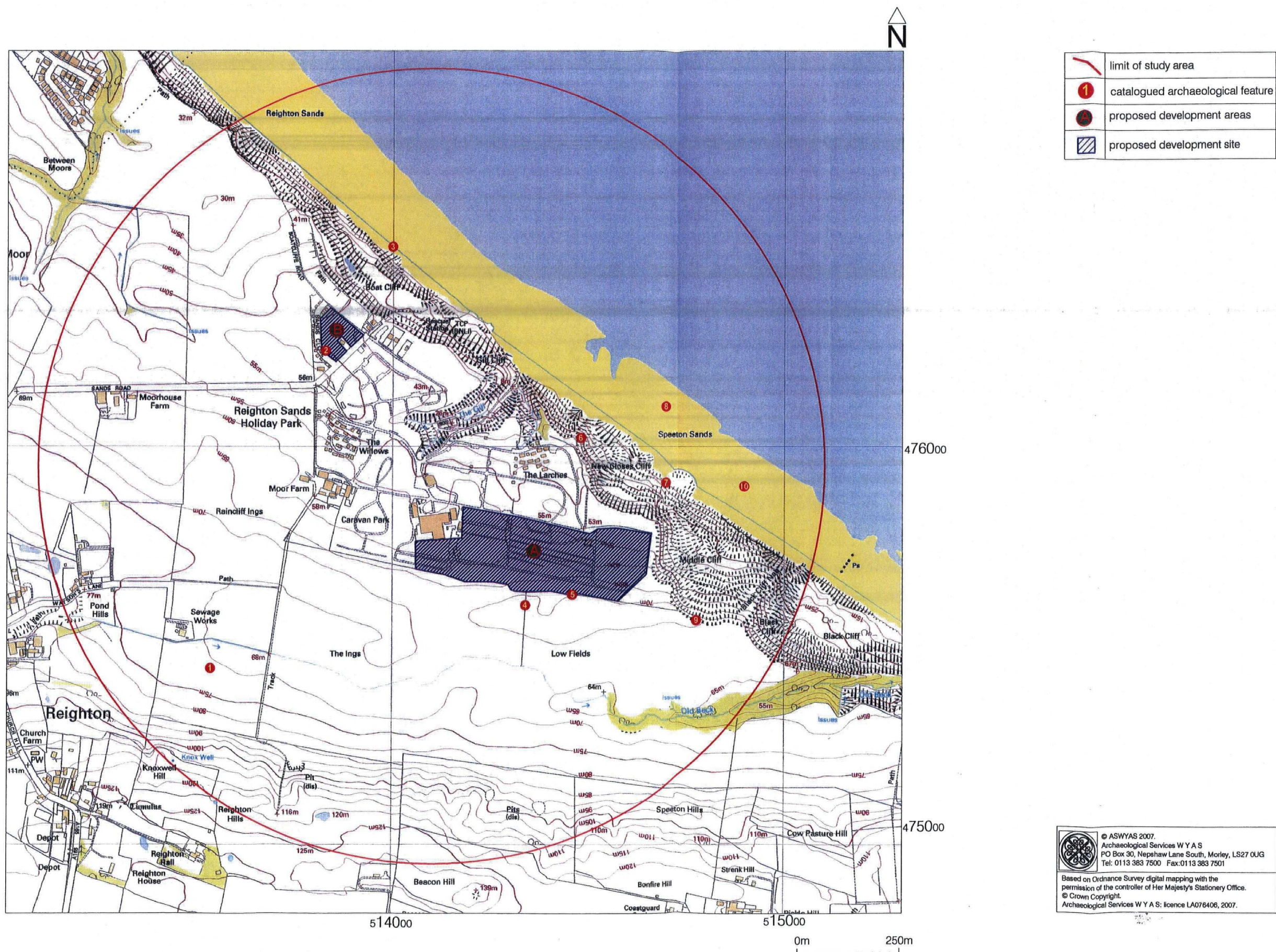


Fig. 2. Site location showing the study area and proposed development site with catalogue numbers (1:10000 scale @ A3)



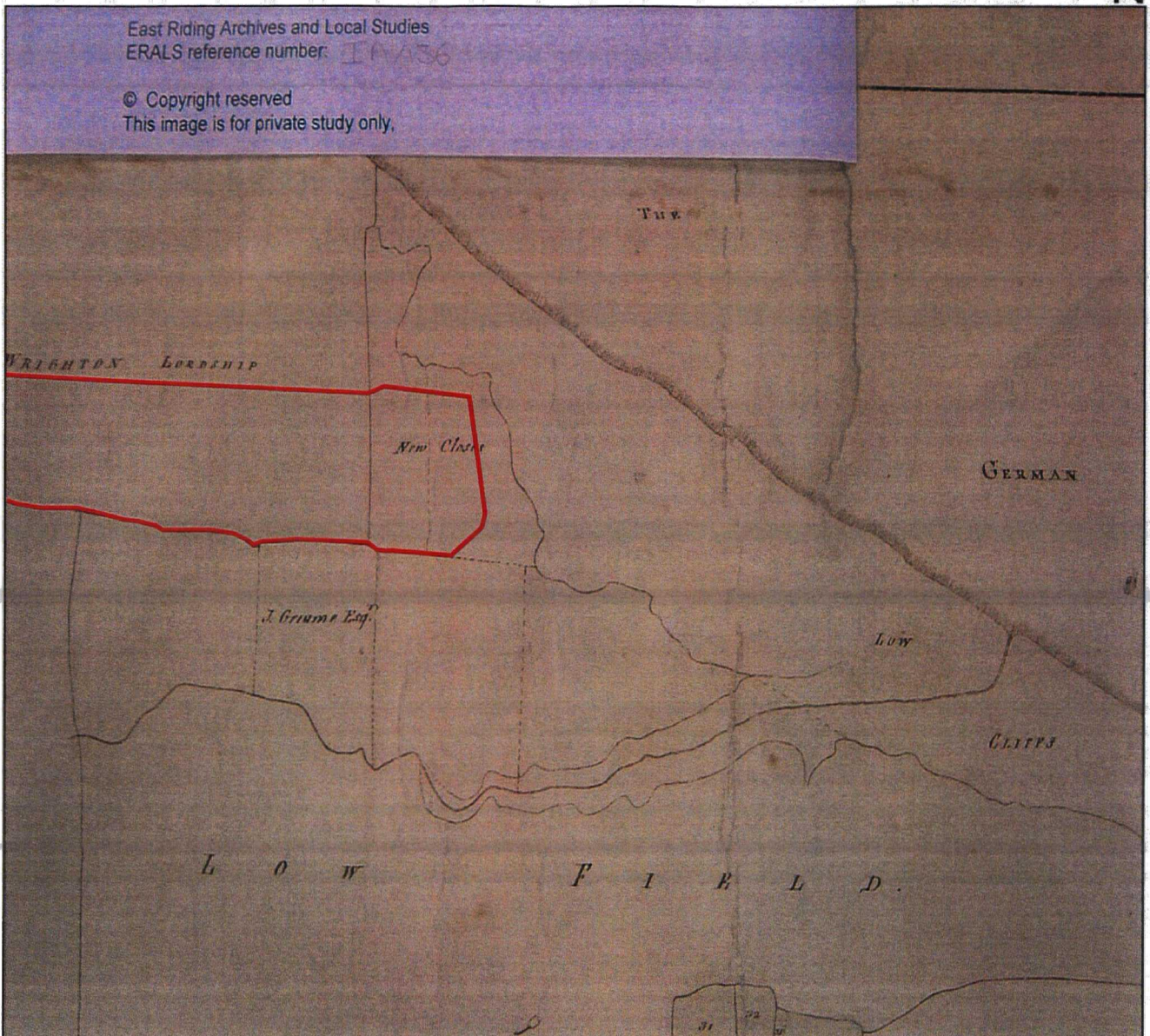


Fig. 3. Extract from the Enclosure map of Speeton, 1772, showing part of Area A of the proposed development site (not to scale)





Fig. 4. Extract from the Enclosure map of Reighton, 1820, showing part of Area A and Area B of the proposed development sites (not to scale)



East Riding Archives and Local Studies

ERALS reference number: OS/1/111

© Copyright reserved

This image is for private study only.



*Fig. 5. Extract from the 1st edition Ordnance Survey map, 1853 (6 inch to 1 mile), showing the proposed development sites (not to scale)*

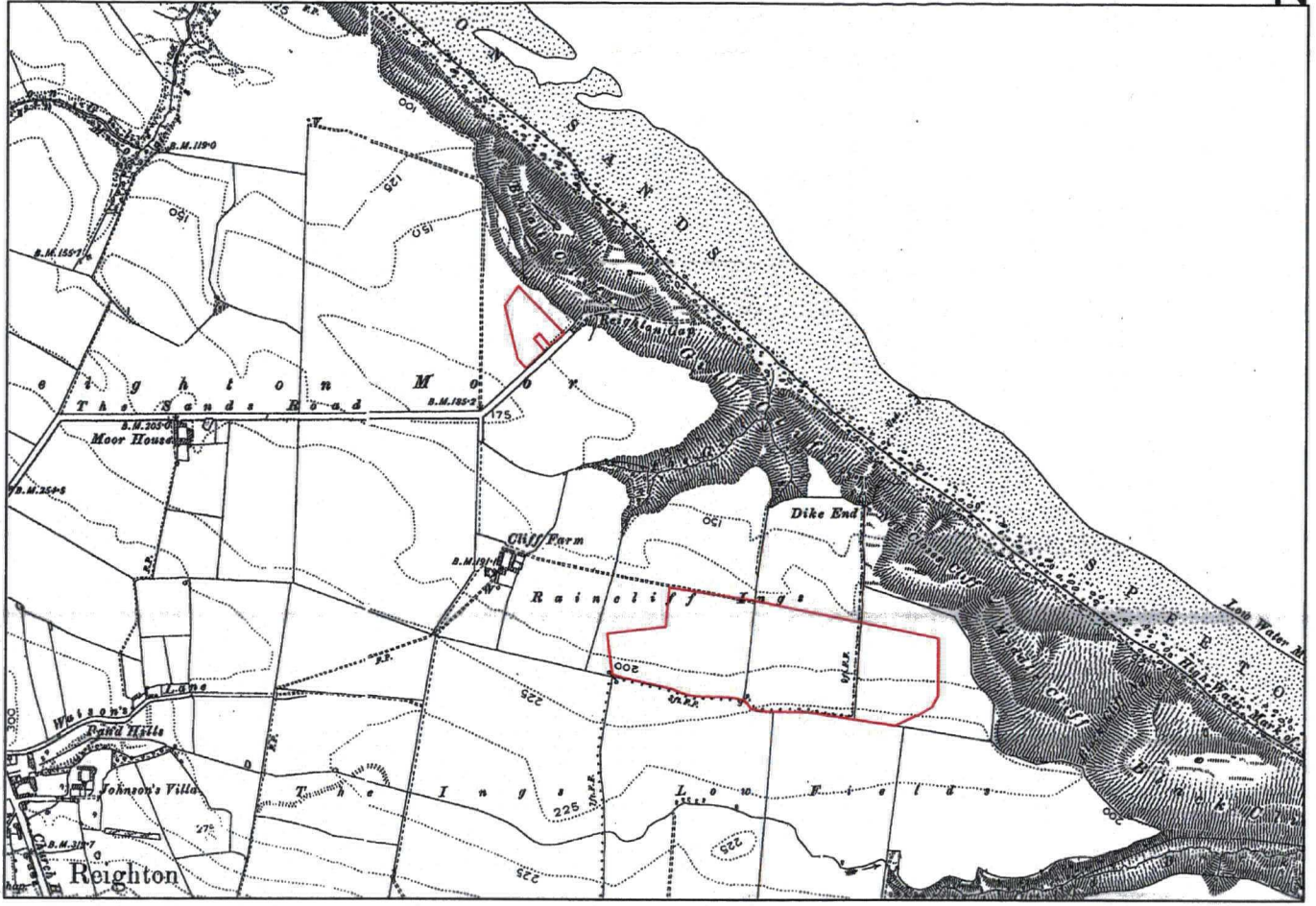


Fig. 6. Extract from the 2nd edition Ordnance Survey map, 1893 (6 inch to 1 mile), showing the proposed development sites (not to scale)





G E R M

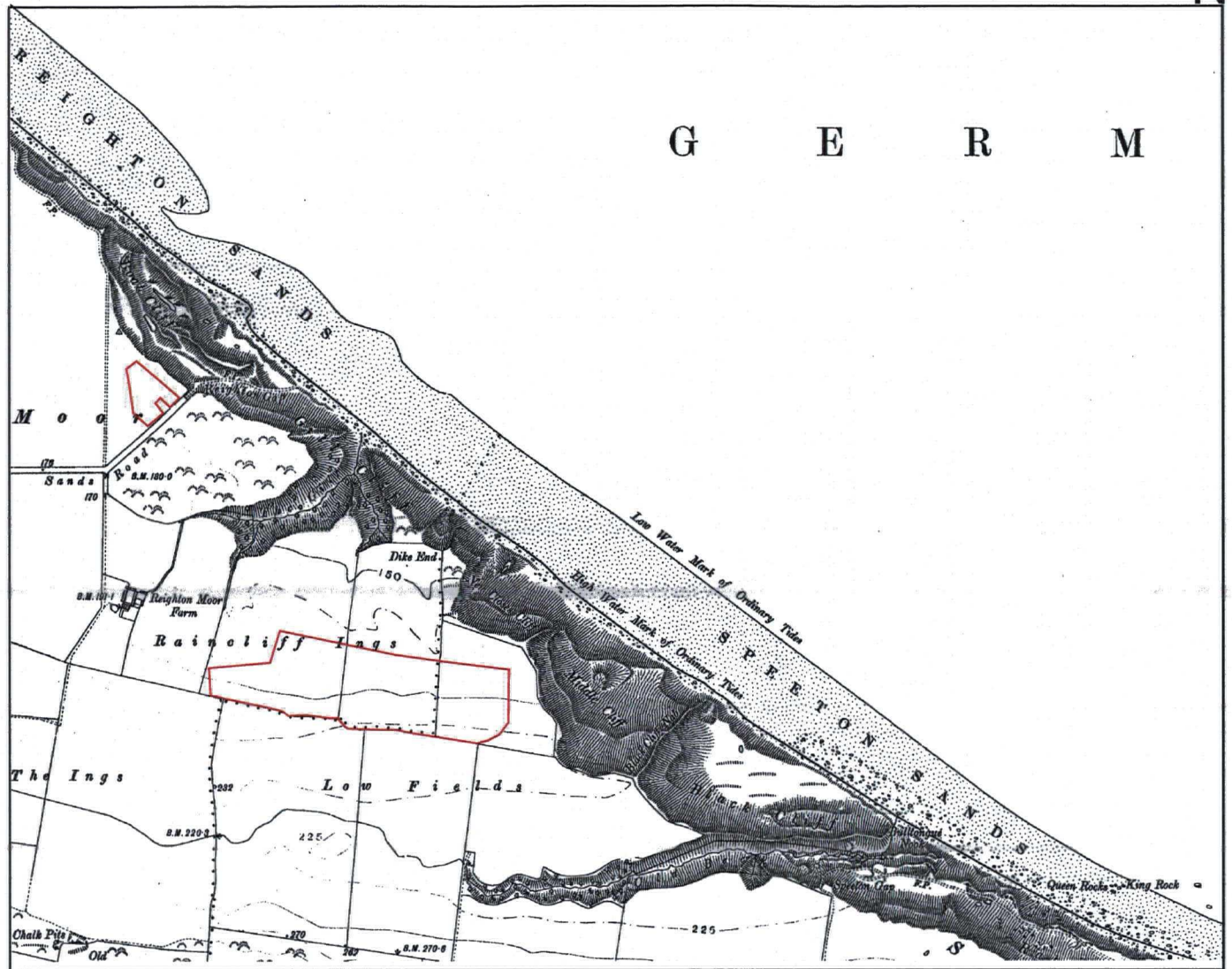


Fig. 7. Extract from the 3rd edition Ordnance Survey map, 1912 (6 inch to 1 mile), showing the proposed development sites (not to scale)

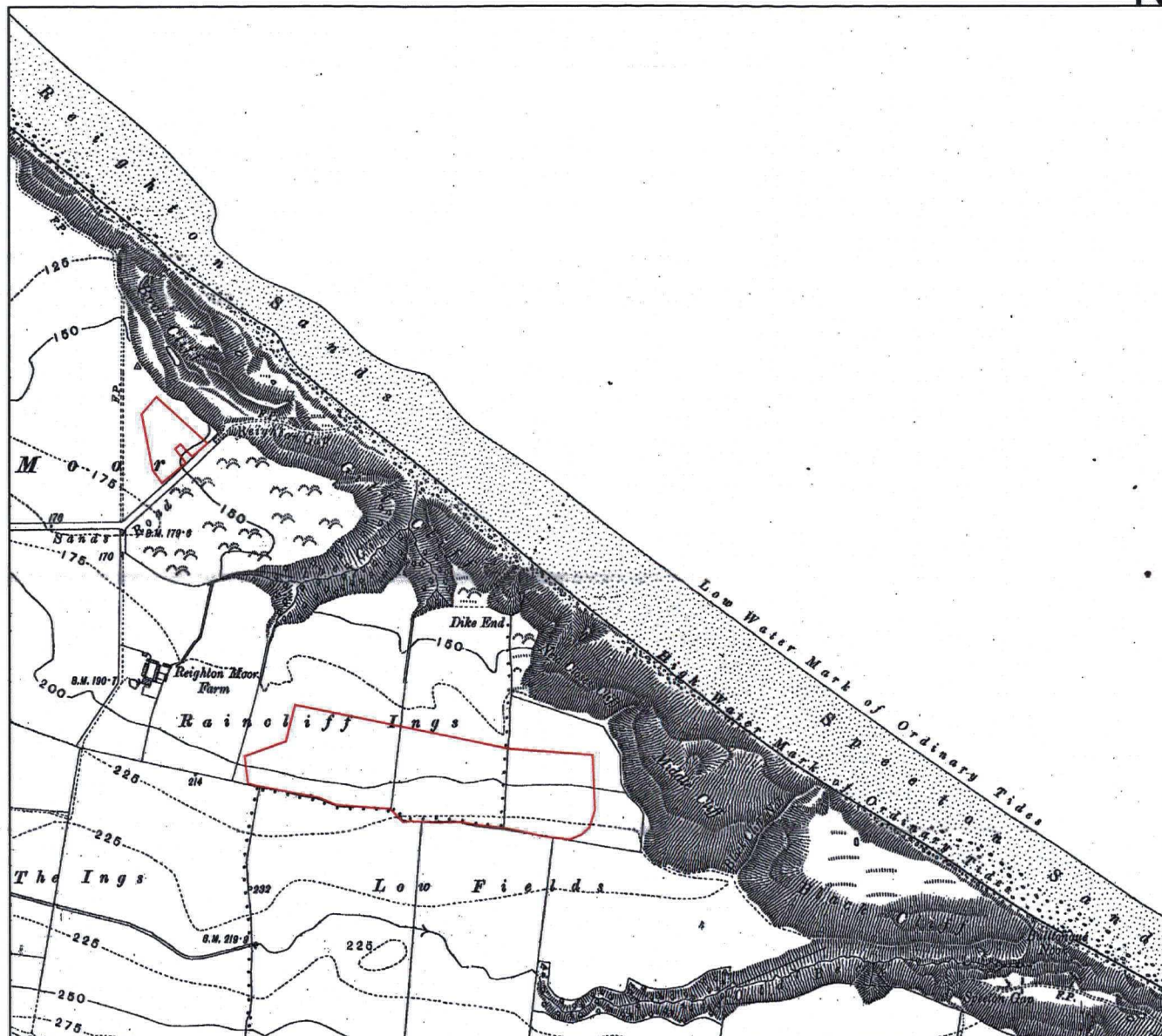


Fig. 8. Extract from 4th edition Ordnance Survey map, 1929 (6 inch to 1 mile), showing the proposed development sites (not to scale)





*Plate 1. View of Area A, looking north*





*Plate 2. View of former parish/field boundary (5) in Area A, looking north*





*Plate 3. View of pillbox (6) in Area A, looking north*





*Plate 4. View of pillbox (4), looking south of Area A*





*Plate 5. View of Area B, looking south*





*Plate 6. View of a possible former field boundary (2), looking north-west*