

Fingill Mill, Darley, North Yorkshire: An Archaeological Building Assessment

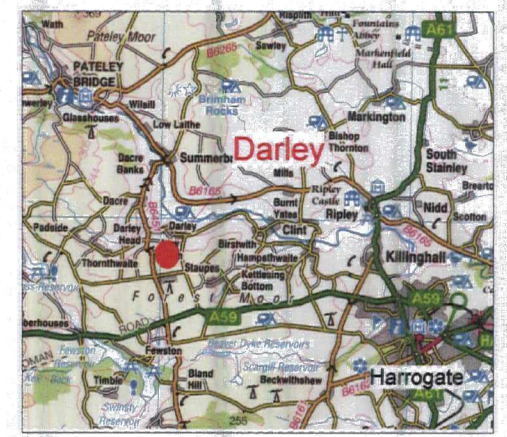
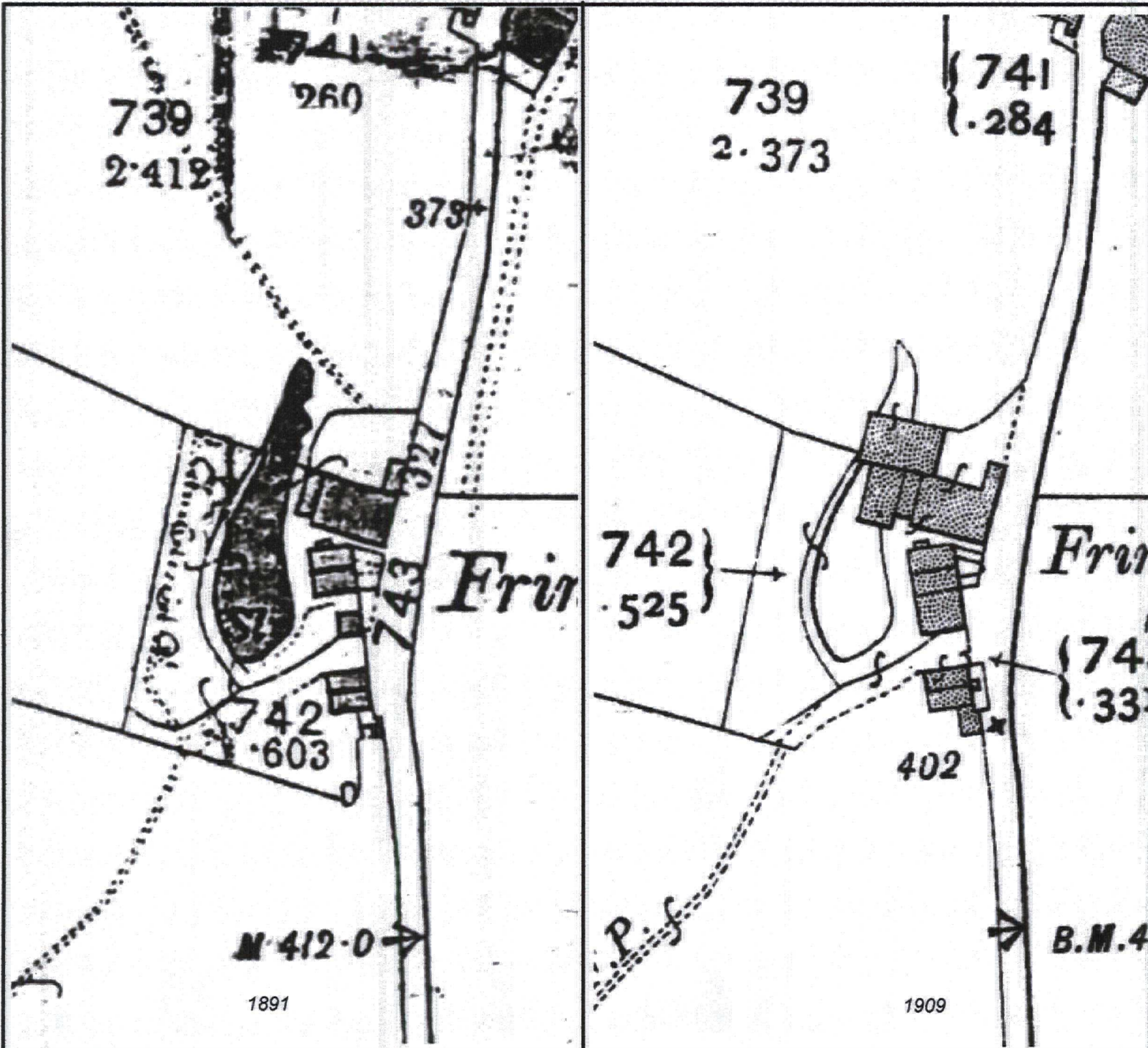


Figure 1: Location map

© Crown Copyright,
All rights reserved.
Licence Number 100045302



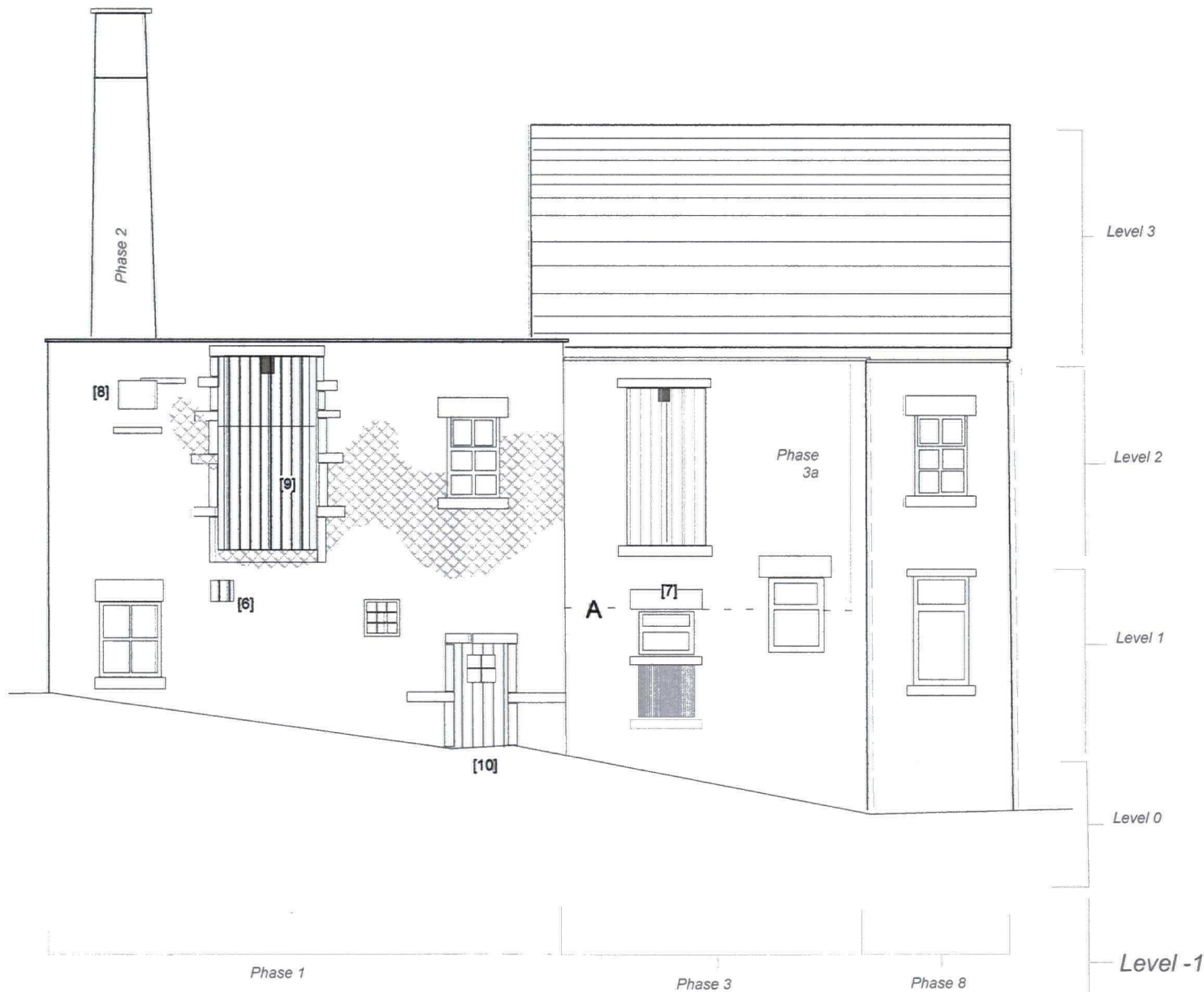
not to scale



Figure 2: Historic Maps

1st and 2nd Edition Ordnance Survey maps

Fringill Mill, Darley, North Yorkshire:
An Archaeological Building
Assessment



key

- [6] - through drive box
- [7] - date stone "1944"
- [8] - extraction ducts
- [9] - original loading door (heightened)
- [10] - original doorway

A - horizontal building line

 burnt/discoloured stone

 blocked opening

scale 1:100

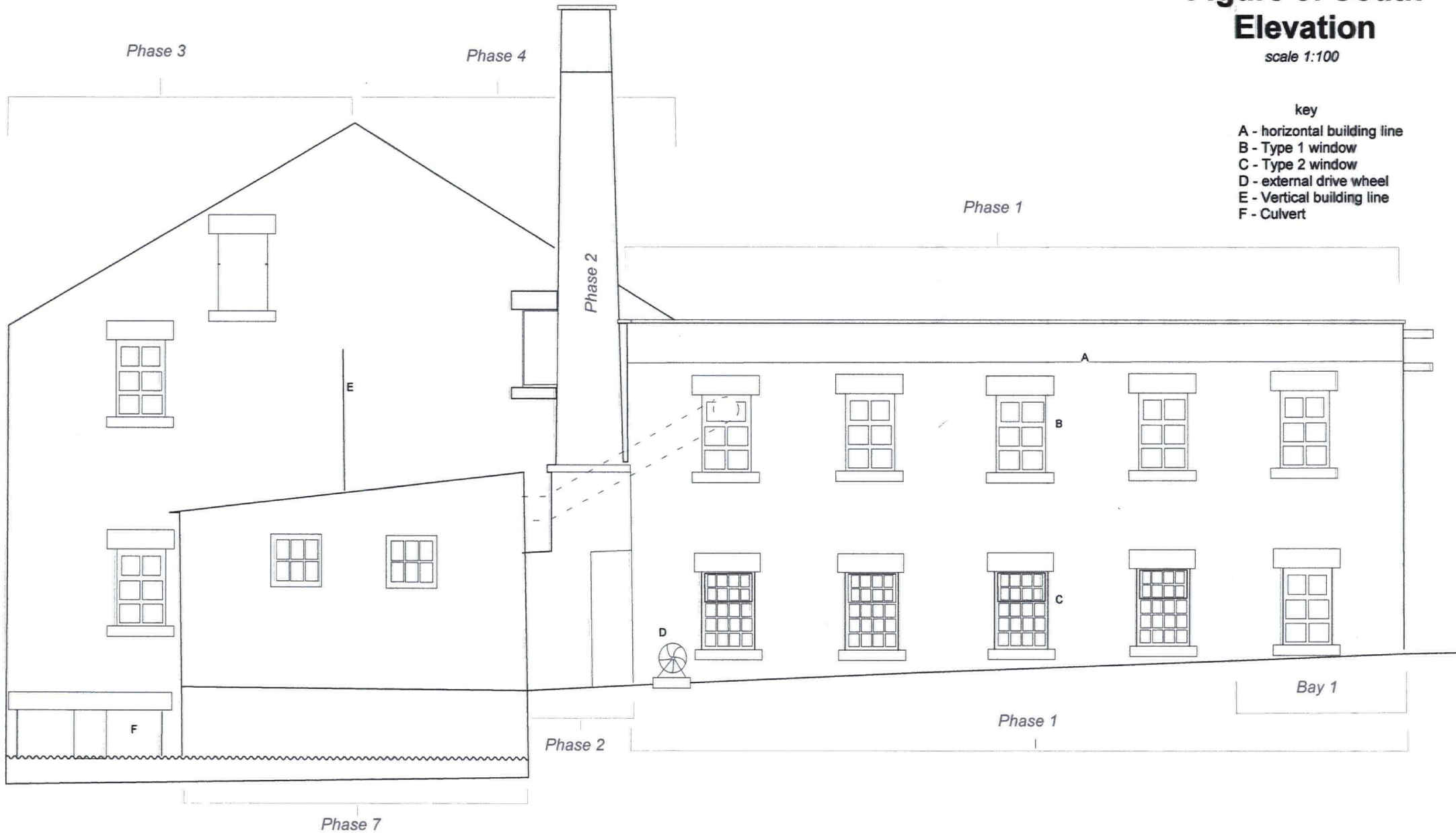
**Figure 4: East
Elevation**

Figure 5: South Elevation

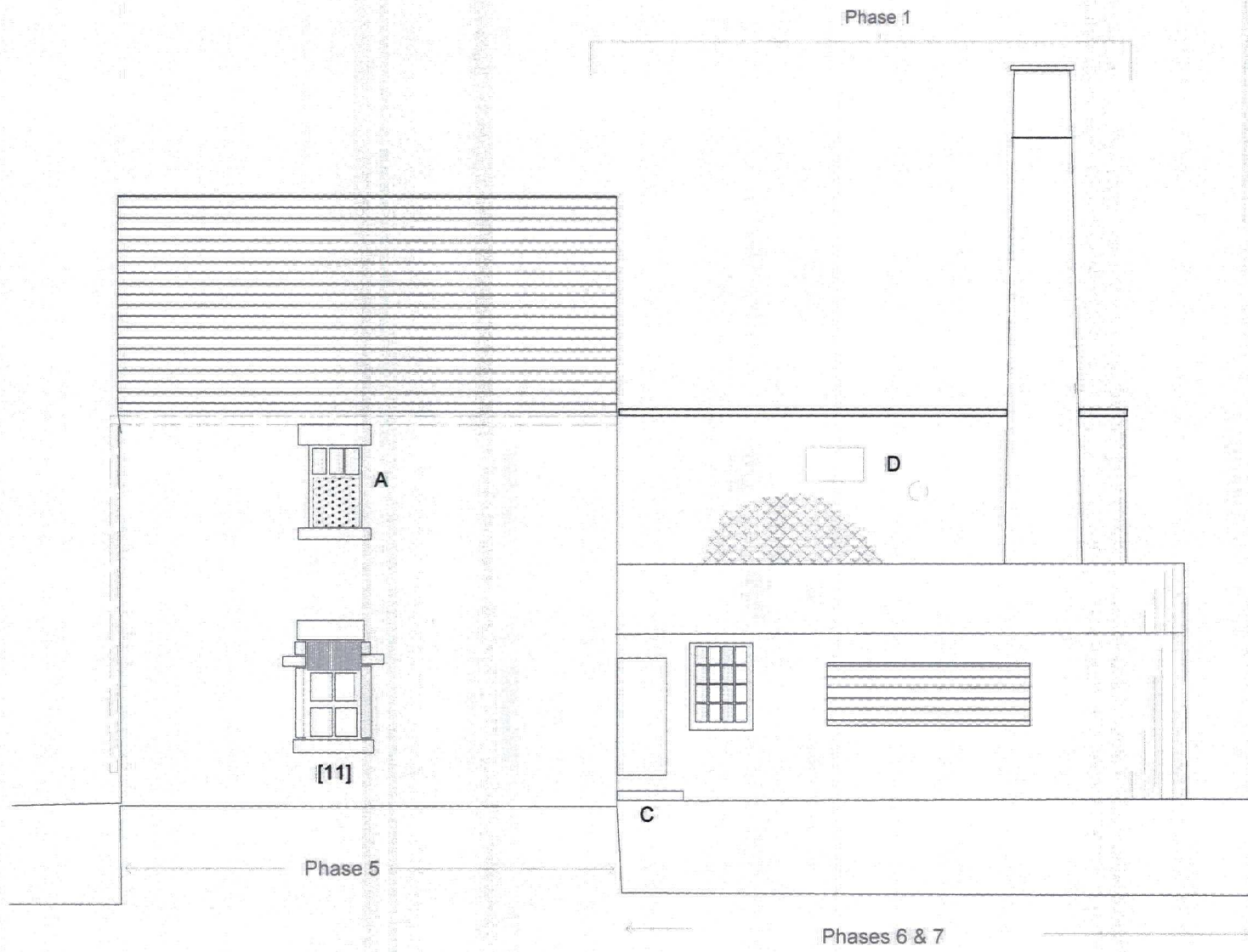
scale 1:100

key

- A - horizontal building line
- B - Type 1 window
- C - Type 2 window
- D - external drive wheel
- E - Vertical building line
- F - Culvert



Fringill Mill, Darley, North Yorkshire:
An Archaeological Building
Assessment



key

- A - Type 2 window
- B - Louvred ventilator
- C - walkway over the mill pond
- D - modern extractor ducts

[11] - window with interrupted
window jambs



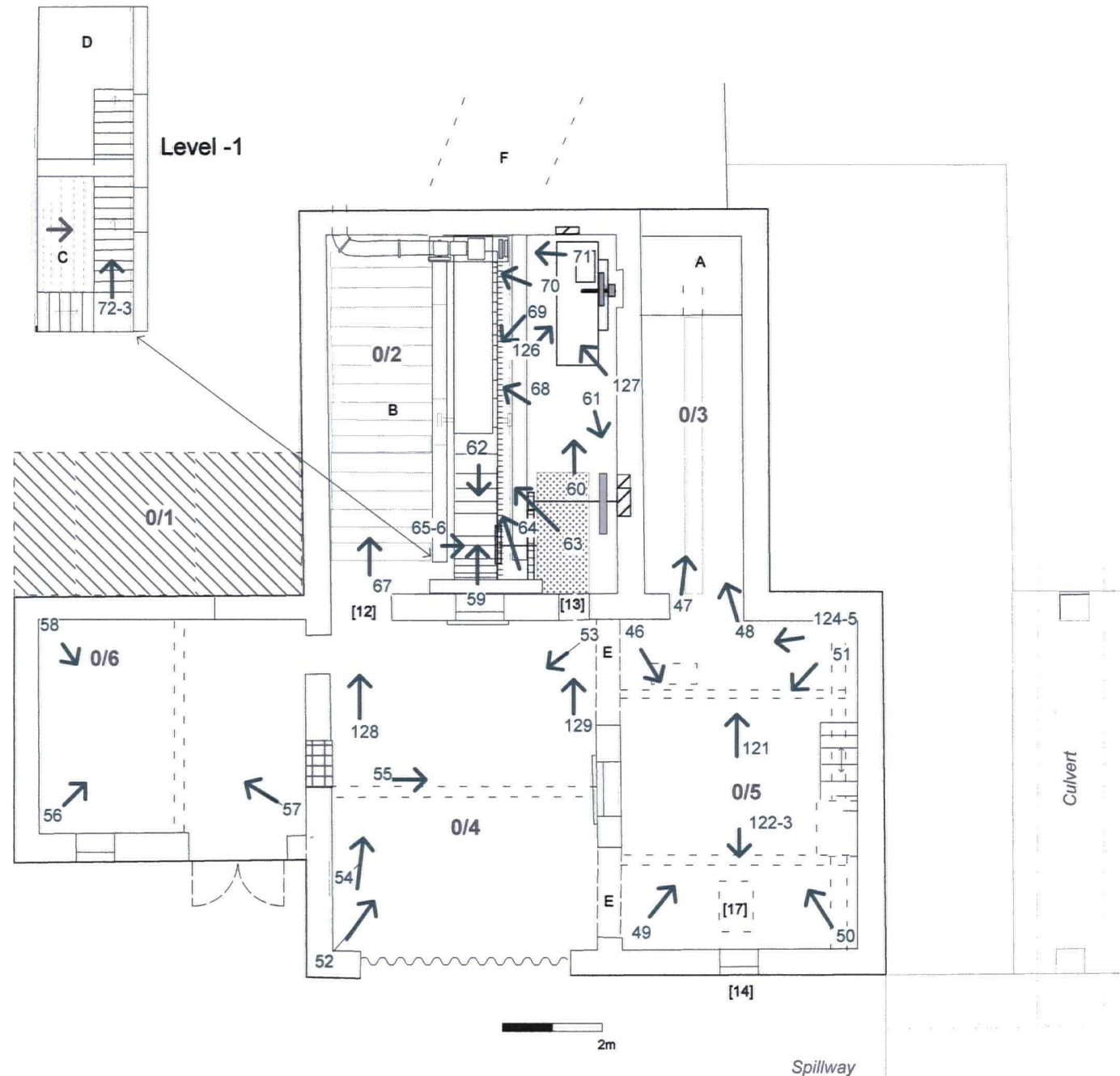
Area of discolouration/
burning



obscured/cover opening

**Figure 6: West
Elevation**

Fringill Mill, Darley, North Yorkshire: An Archaeological Building Assessment



key

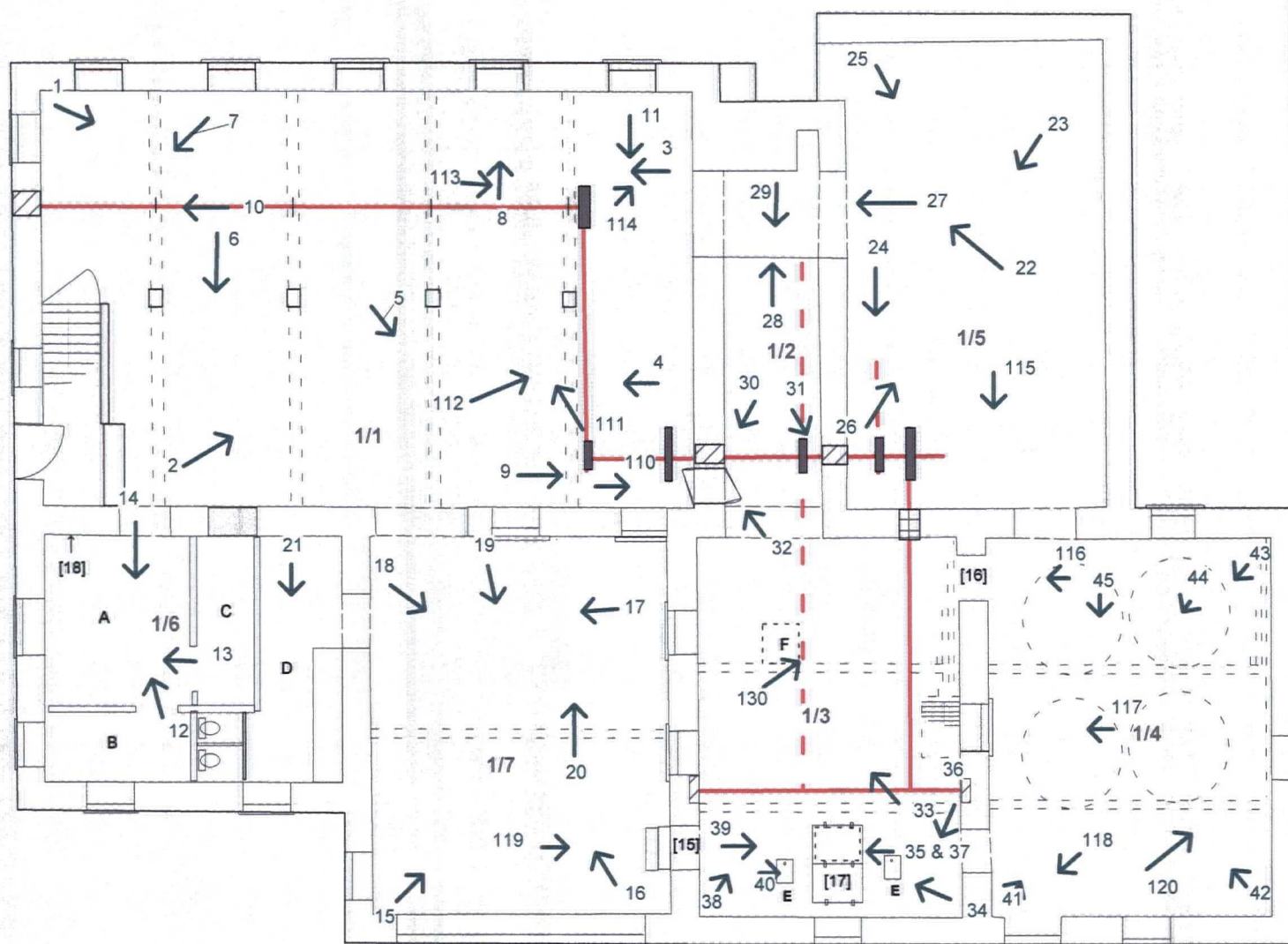
- | | | |
|------|--|--|
| 21 → | Photo position, direction and location No. | A - rectangular brick chimney base |
| 0/1 | level/room number | B - recessed timber |
| → | drive shafts | C - stepped/revetted stone work |
| ---→ | possible drive shafts | D - site of the vertical turbine |
| ▨ | bearing boxes | E - wagon doorway |
| ■ | in situ drive belt wheels | F - Probable location of the pentrough or earlier headrace |
| ▣ | blocked openings | [12] original doorway |
| ▤ | Probable location of basement storeroom | [13] inserted doorway |
| □ | raised timber floor above power transmission | |



not to scale

Figure 7: Floor Plans Levels -1 and 0

Fringill Mill, Darley, North Yorkshire:
An Archaeological Building
Assessment



key

- 21 → photo position, direction and location No.
- 0/1 level/room number
- drive shafts
- - - possible drive shafts
- ▨ bearing boxes
- in situ drive belt wheels
- ▧ blocked openings
- ▨ wooden floor
- - - reflective ceiling plan

- A - general Office
- B - managers Office
- C - annexed storeroom
- D - toilets
- E - trapdoors for vertical ropes
- F - Modern chute
- [15] - original loading door
- [16] - original doorway
- [17] - trap door
- [18] - inclined roof scar

not to scale



**Figure 8: Floor Plan
Level 1**

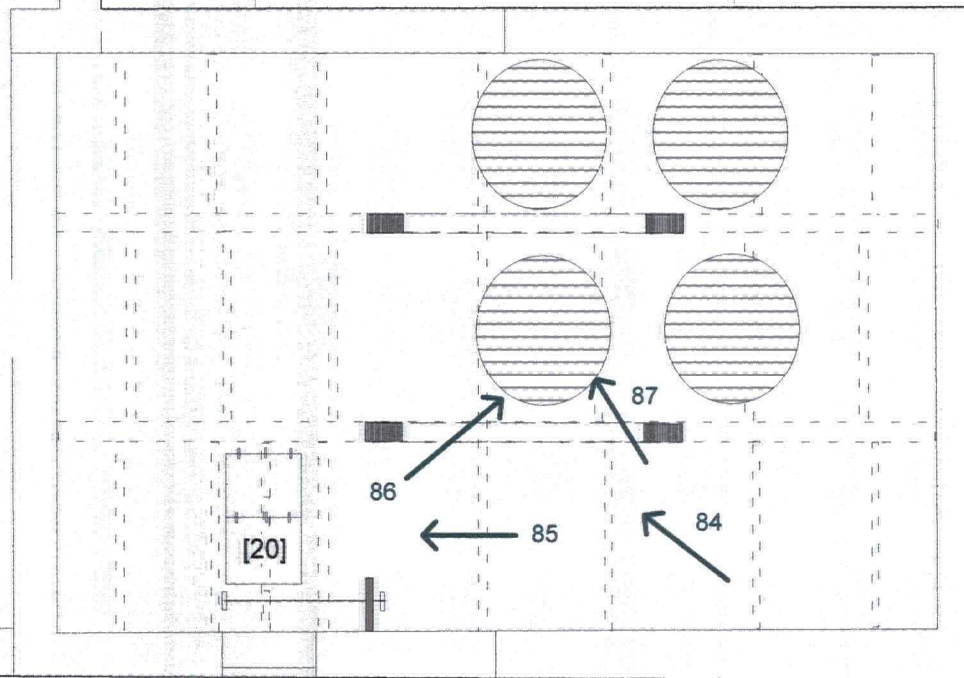
Fringill Mill, Darley, North Yorkshire:
An Archaeological Building
Assessment




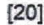

- 21 → Photo position, direction and location No.
- 0/1 level/room number
- drive shafts
- - - possible drive shafts
- ▨ bearing boxes
- ▣ probable bearing box with cast iron frame and location bolts
- ▧ blocked openings
- modern feed store
- - - reflective ceiling plan
- removed floor
- cast iron column (re-used)
- A - sliding hoist
B - removed firedoor (lies adjacent)
C - inserted loading door
D - skylights
- [9] Original, phase 1 loading door
[19] Trapdoor

**Figure 9: Floor Plan
Level 2**

Fringill Mill, Darley, North Yorkshire:
An Archaeological Building
Assessment



key

-  cross section of post
-  [20] trapdoor and adjacent hoist
-  removed floor for the four modern inserted silos

scale 1:100



**Figure 10: Level 3
Floor Plan**