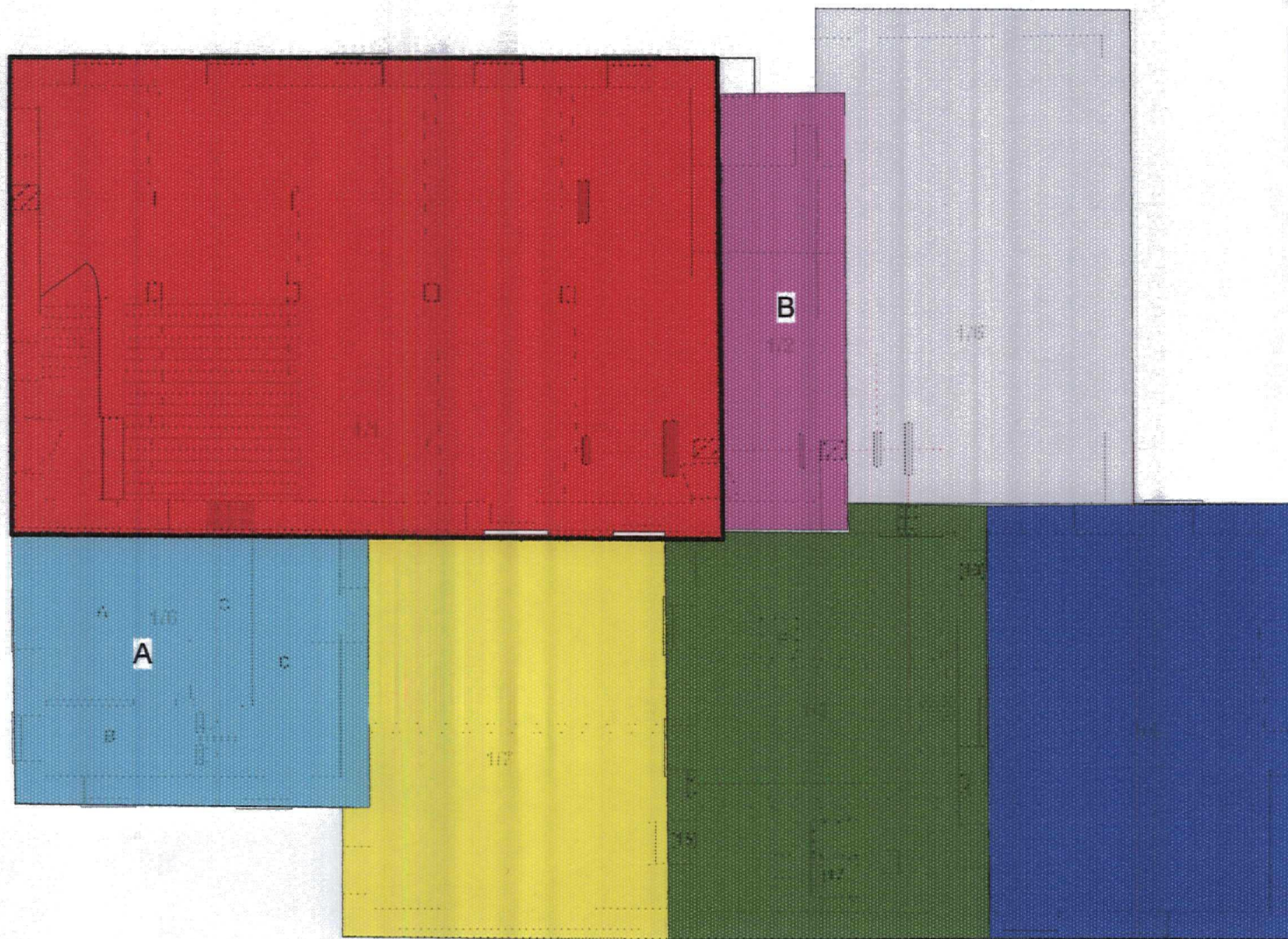


Fringill Mill, Darley, North Yorkshire: An Archaeological Building Assessment



Building Phases

- 1 - flax mill
- 2 - boiler house
- 2 - storey extension with 3rd storey the phase 3a addition
- 4 - corn mill
- 5 - corn mill extension
- 6/7 - shed
- 8 - modern infill extension

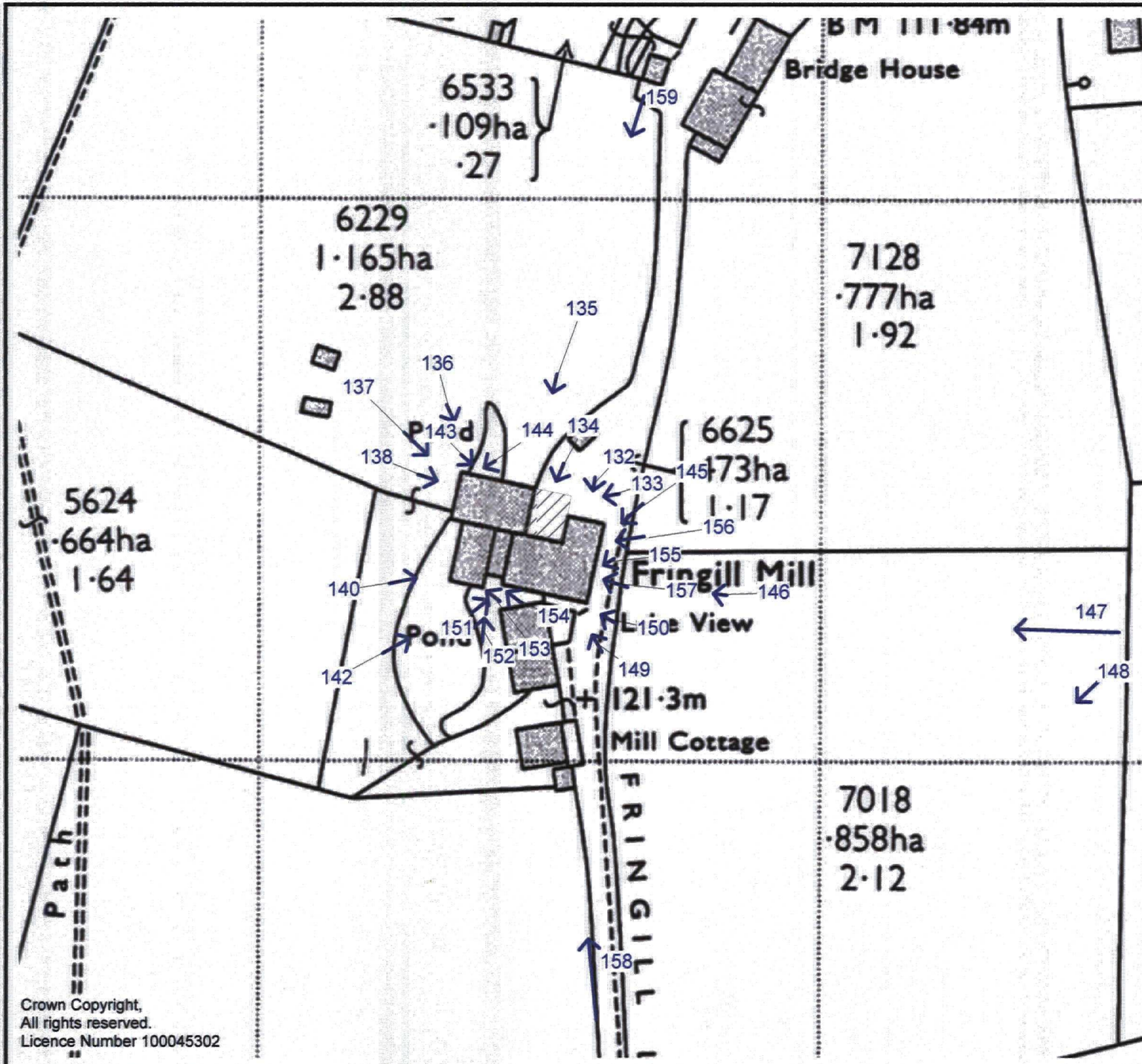
A - with phase 3a at level 2

B - boiler house re-roofed during Phase 7

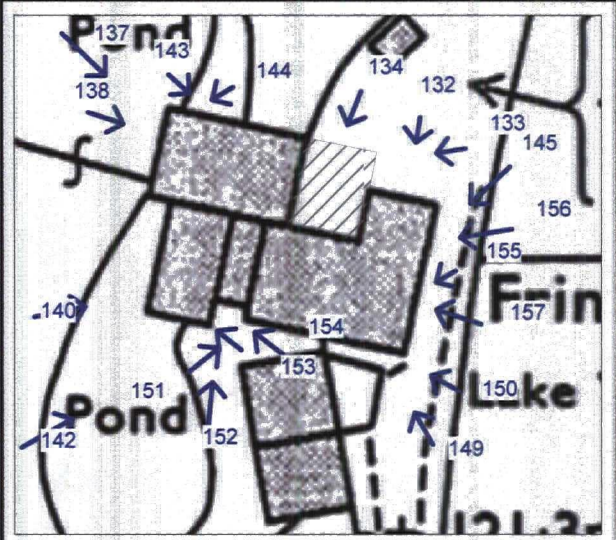
not to scale



Figure 11: Phase Plan



Fringill Mill, Darley, North Yorkshire:
An Archaeological Building Assessment



- ➔ External photograph location and direction
- ▨ Phase 8 extension



scale 1:1000

Figure 12: External Photographs

Crown Copyright,
All rights reserved.
Licence Number 100045302

PLATES



Plate 1, (159: 5/1) general view of Fringill Mill, from the north

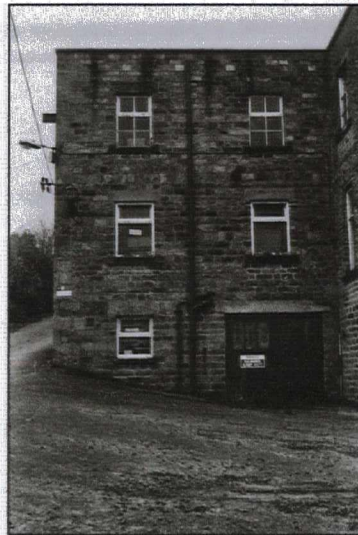


Plate 2 (132: 1/35-6) exterior, north elevation: general view of the 'Office' extension (Phase 3/3a) from the north



Plate 3 (134:1/31-2) exterior, north elevation: view of the phase 8 extension, from the north

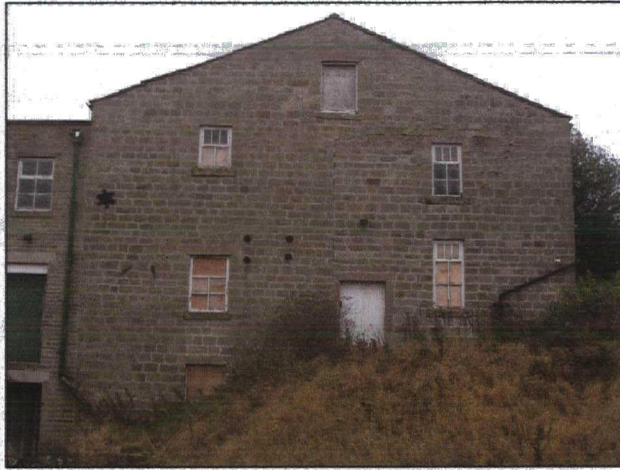


Plate 4 (135: 1/30) exterior, north elevation: general view of the phase 4 and 5 corn mill, from the north



Plate 5 (144: 1/18) exterior, north elevation: view of the culvert, from the north north-east



Plate 6 (143: 1/19) exterior, north elevation: view of the spillway at the foot of the phase 4 and 5 corn mill