



Plate 64 (16: 2/25) Room 1/7: general view, from the north-east



Plate 65 (20: 2/20) Room 1/7: view of the type 3 windows in the phase 1 'exterior' elevation = south wall, from the north

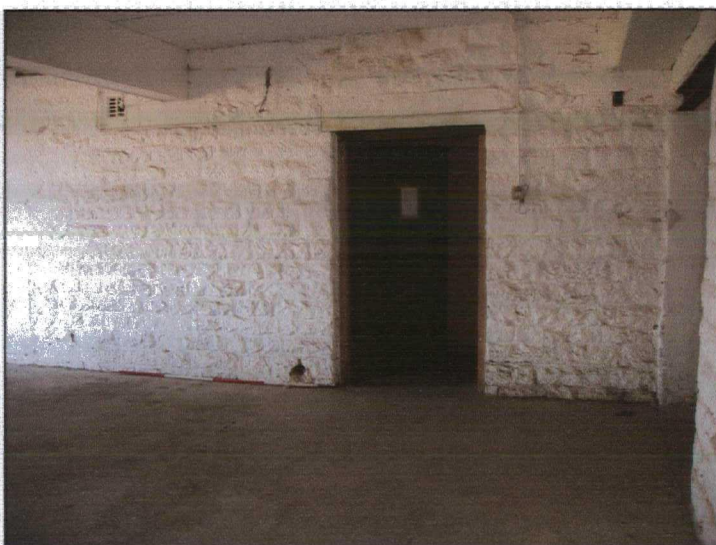


Plate 66 (17: 2/23-4) Room 1/7: general view, from the west



Plate 67 (75: 4/30) Room 2/1: general view towards the modern extractors, from the south-east



Plate 68 (76: 4/29) Room 2/1: general view, from the south-west



Plate 69 (99: 4/5) Room 2/1: general view, from the north-west



Plate 70 (100: 4/4) Room 2/1: view of the central triangular skylight, from the east



Plate 71 (101: 4/3) Room 2/1: view of the in situ sprinkler system with attached hose, from the north-east



Plate 72 (103: 4/1) Room 2/1: general view of the loading door, from the west



Plate 73 (78: 4/27) Room 2/2: general view of the additional loading door in the east wall, from the south-west



Plate 74 (77: 4/28) Room 2/2: general view with bearing box to the upper wall in the top of the wall that predates the sprinkler system, from the south-east



Plate 75 (106: 5/33) Room 2/5: general view, from the west



Plate 76 (90: 4/14) Room 2/3: view of the pulley with in situ belts, from the south-west

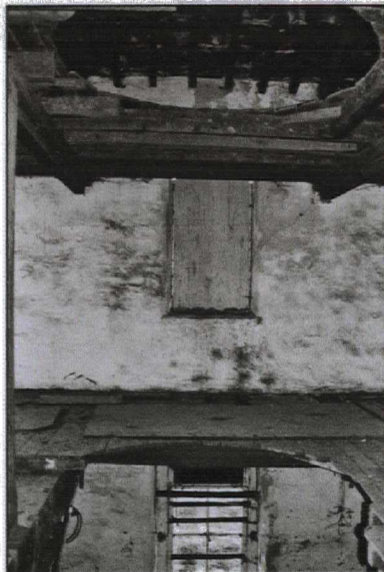


Plate 77 (93: 4/11) Room 2/4: sectional view of the two floors, from the north

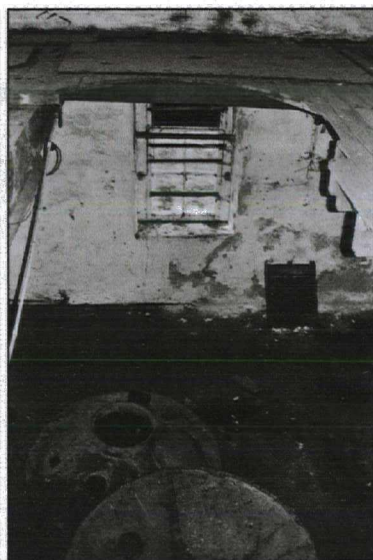


Plate 78 (94: 4/10) Room 2/4: sectional view towards level 1, from the north