



**Plate 1.** View of Site from Gargrave Road Entrance. Facing North West



**Plate 2.** Tree Plantation along Gargrave Road. Facing West

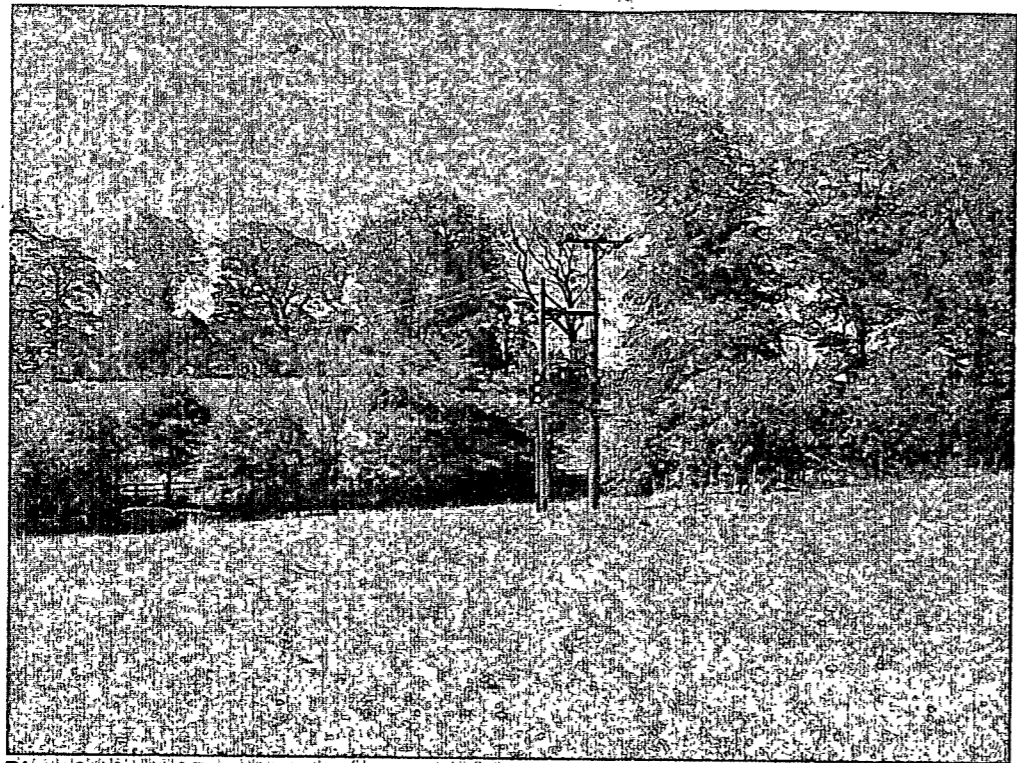


Plate 3. View of Power Line. Facing South

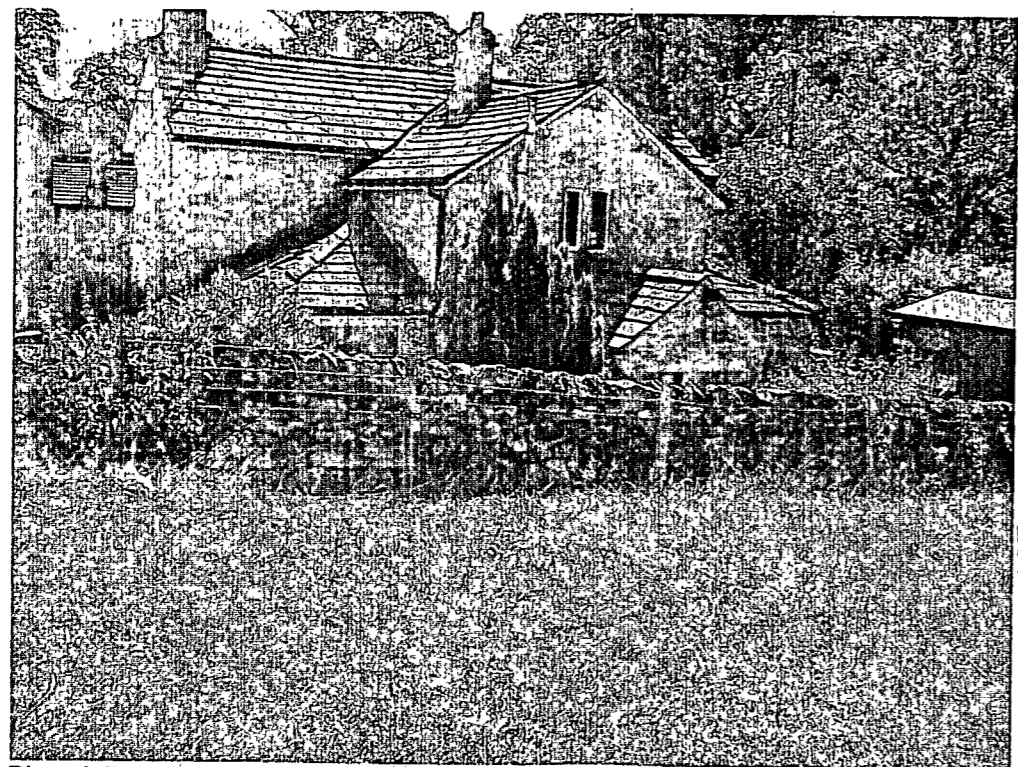


Plate 4. Boundary with Aireville Grange House. Facing East



Plate 5. Boundary with Woodland to East of Site. Facing East

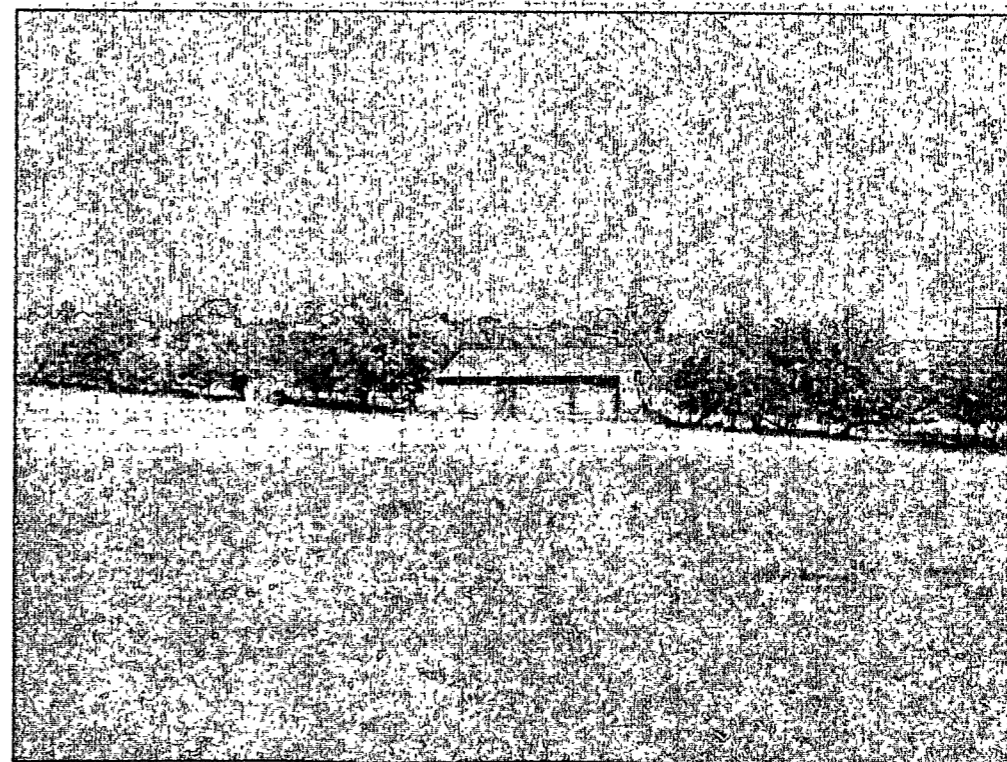


Plate 6. Northern Boundary of Site Showing Field Barn. Facing North

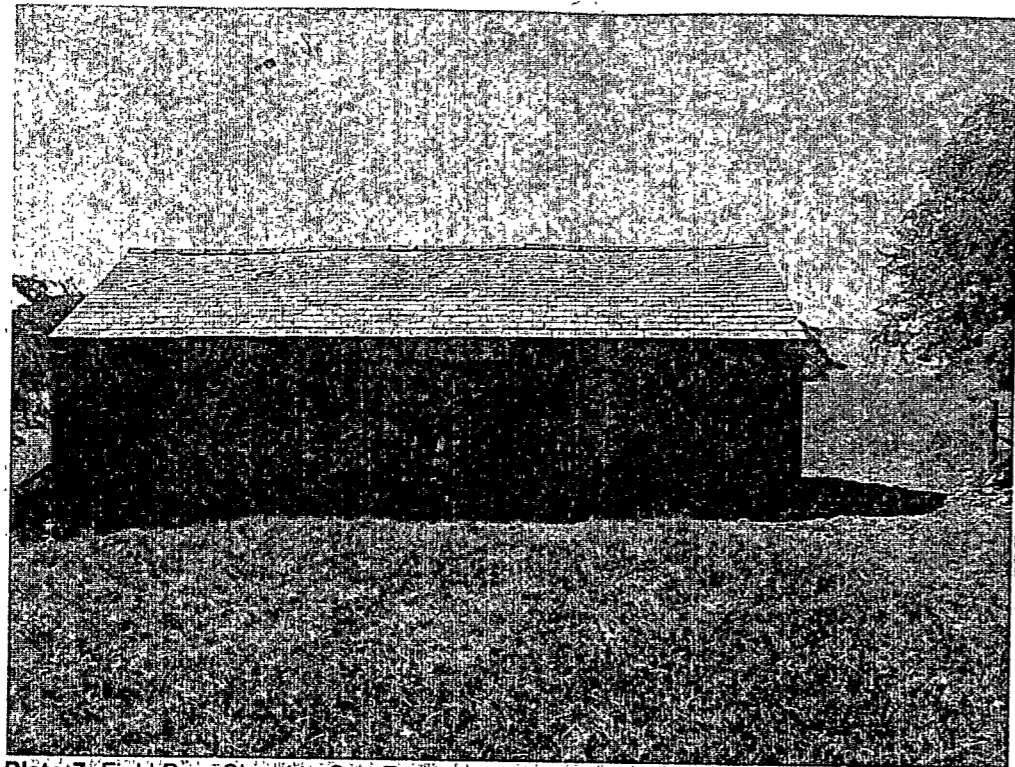


Plate 7. Field Barn Showing Cart Entrance. Facing South

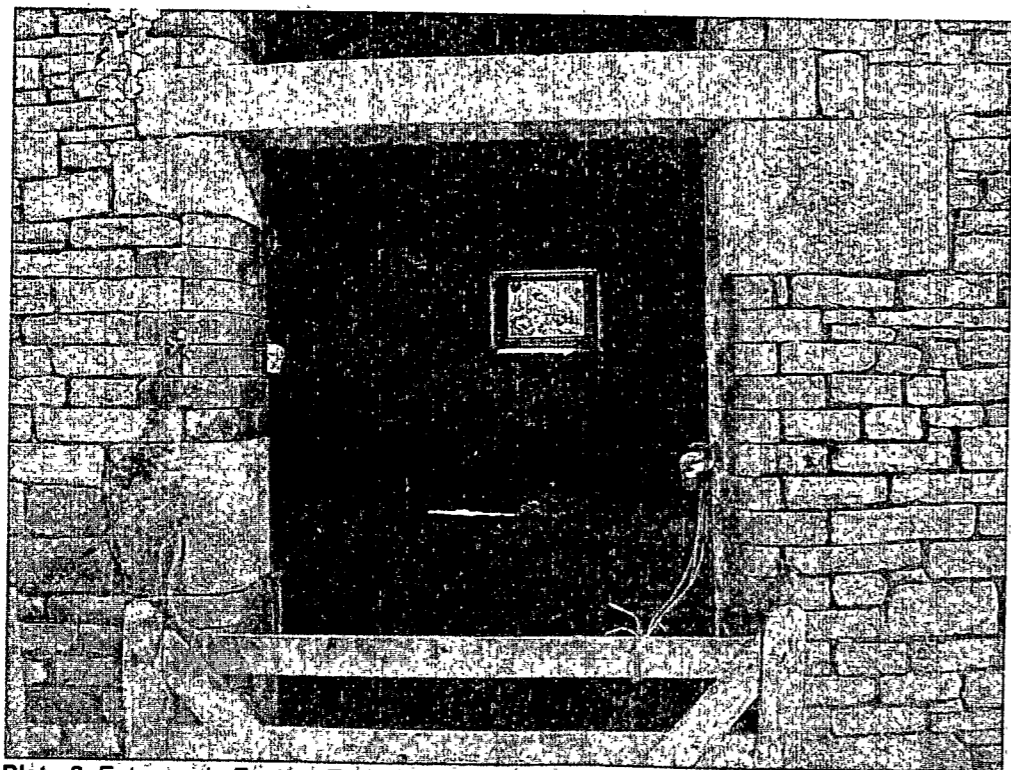


Plate 8. Entrance in Eastern End of Field Barn. Facing West



Plate 9. Western Boundary of Site. Facing West

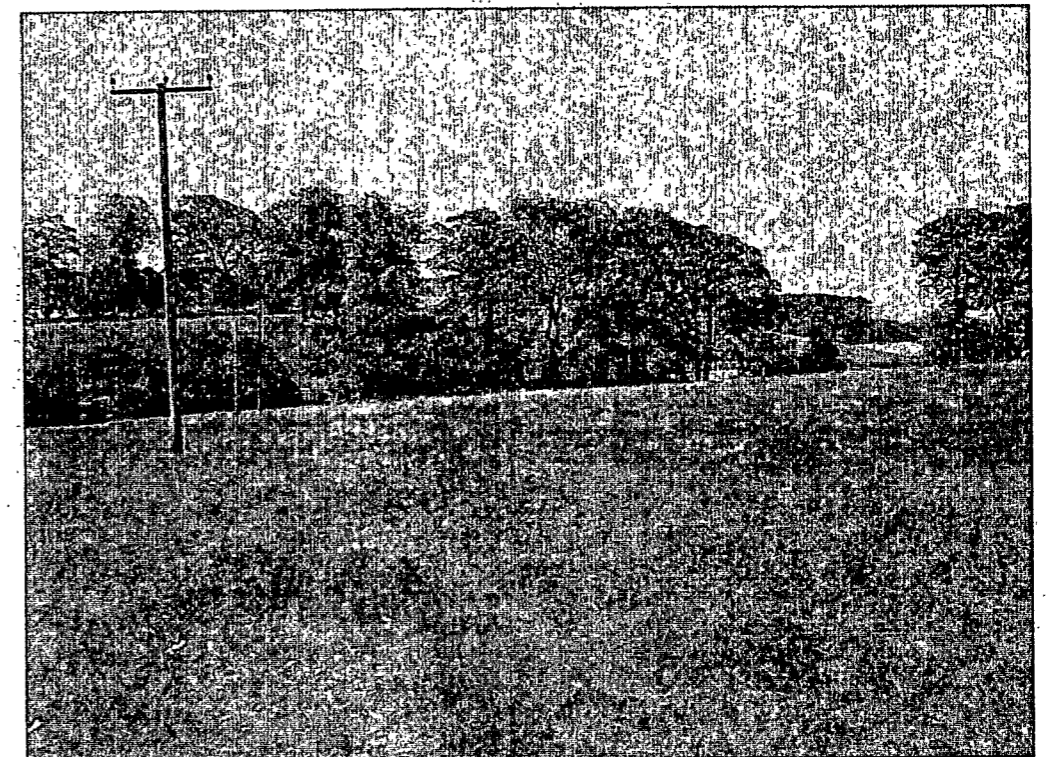


Plate 10. View of Site Showing Power Line. Facing South