

Figure 1. Site Location

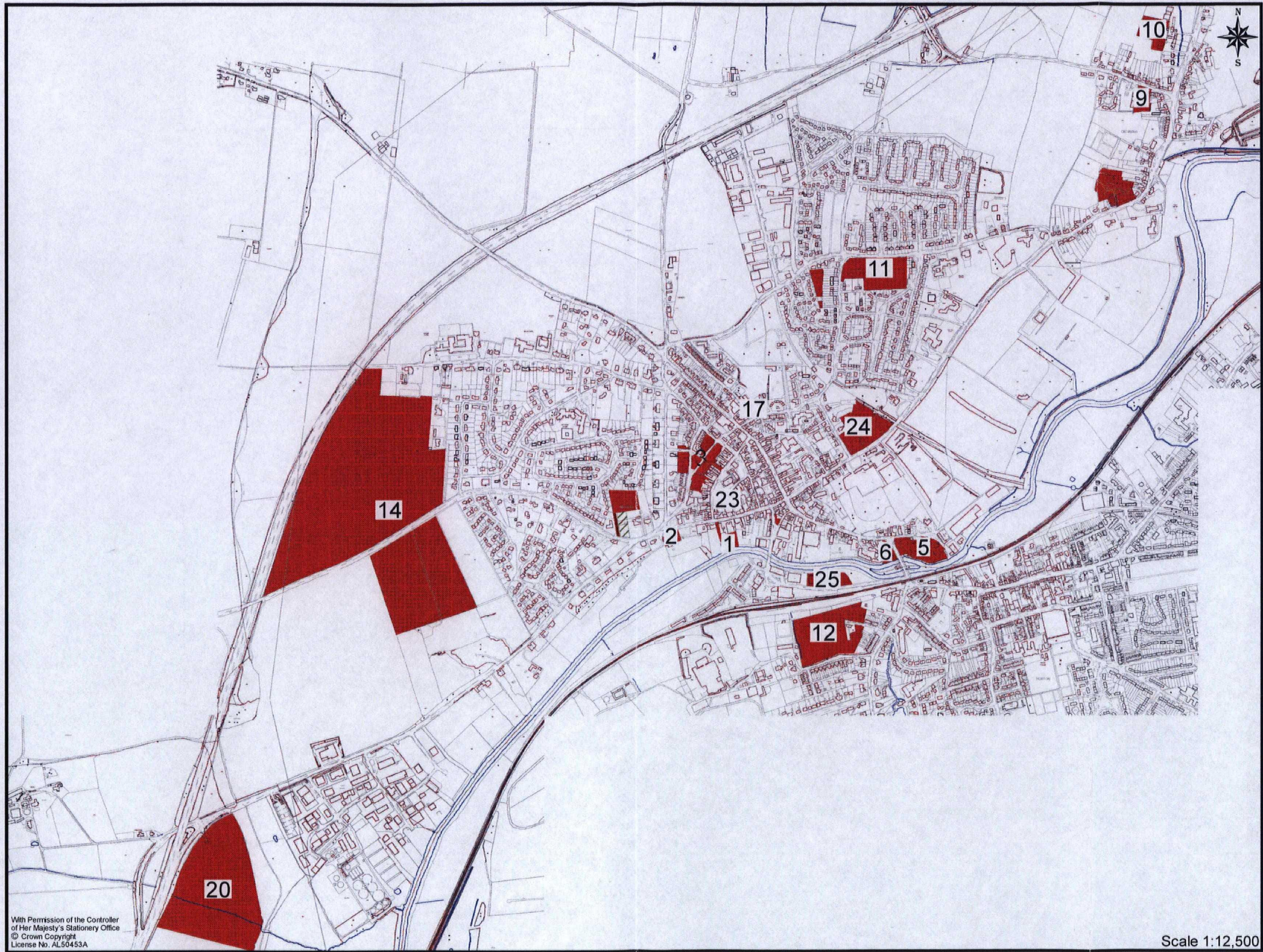
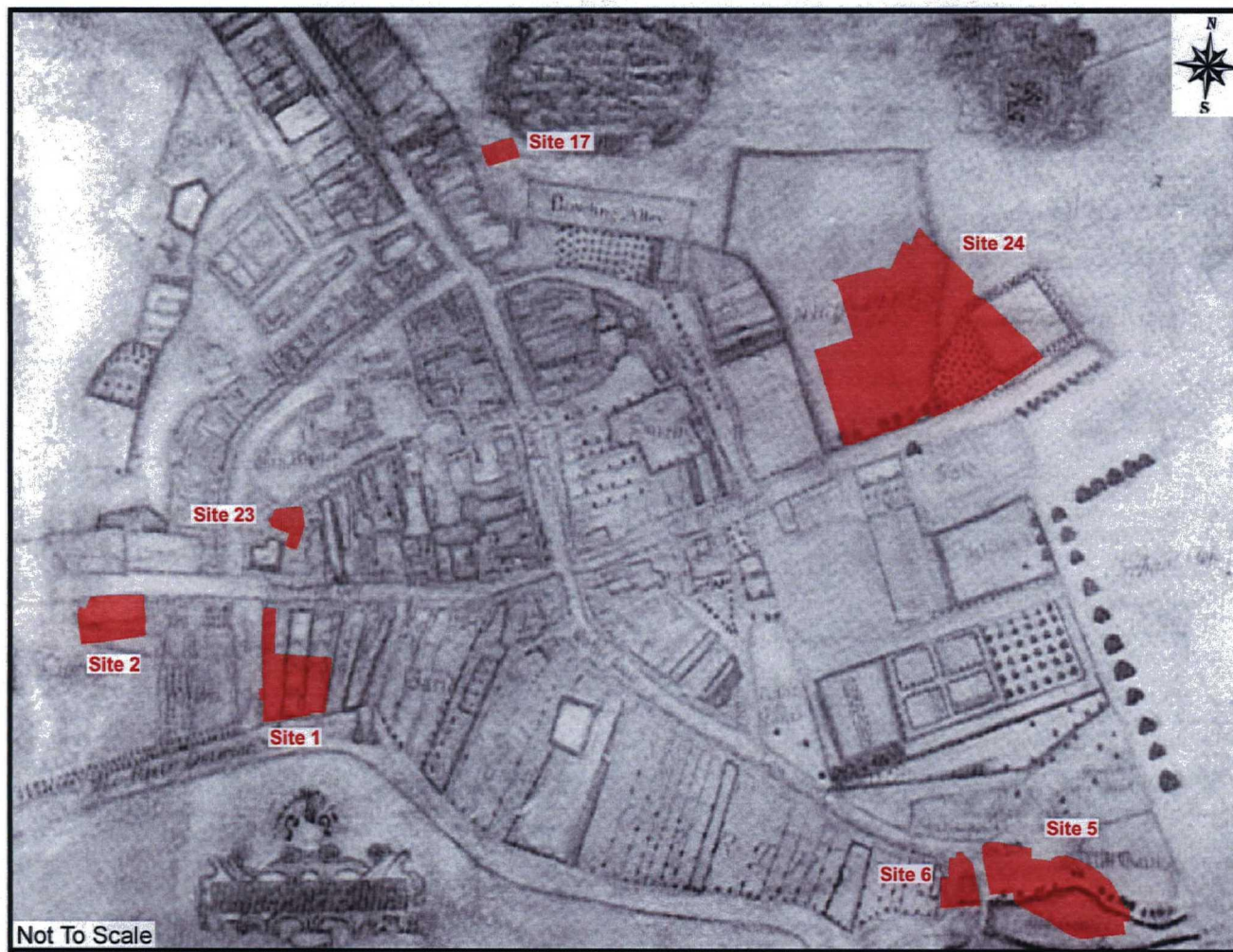


Figure 2. Potential Areas of Development



**Figure 3.** Joseph Dickinson's 1730 Plan of the *Burrow of New Malton*: Sites 1, 2, 5, 6, 17, 23 and 24

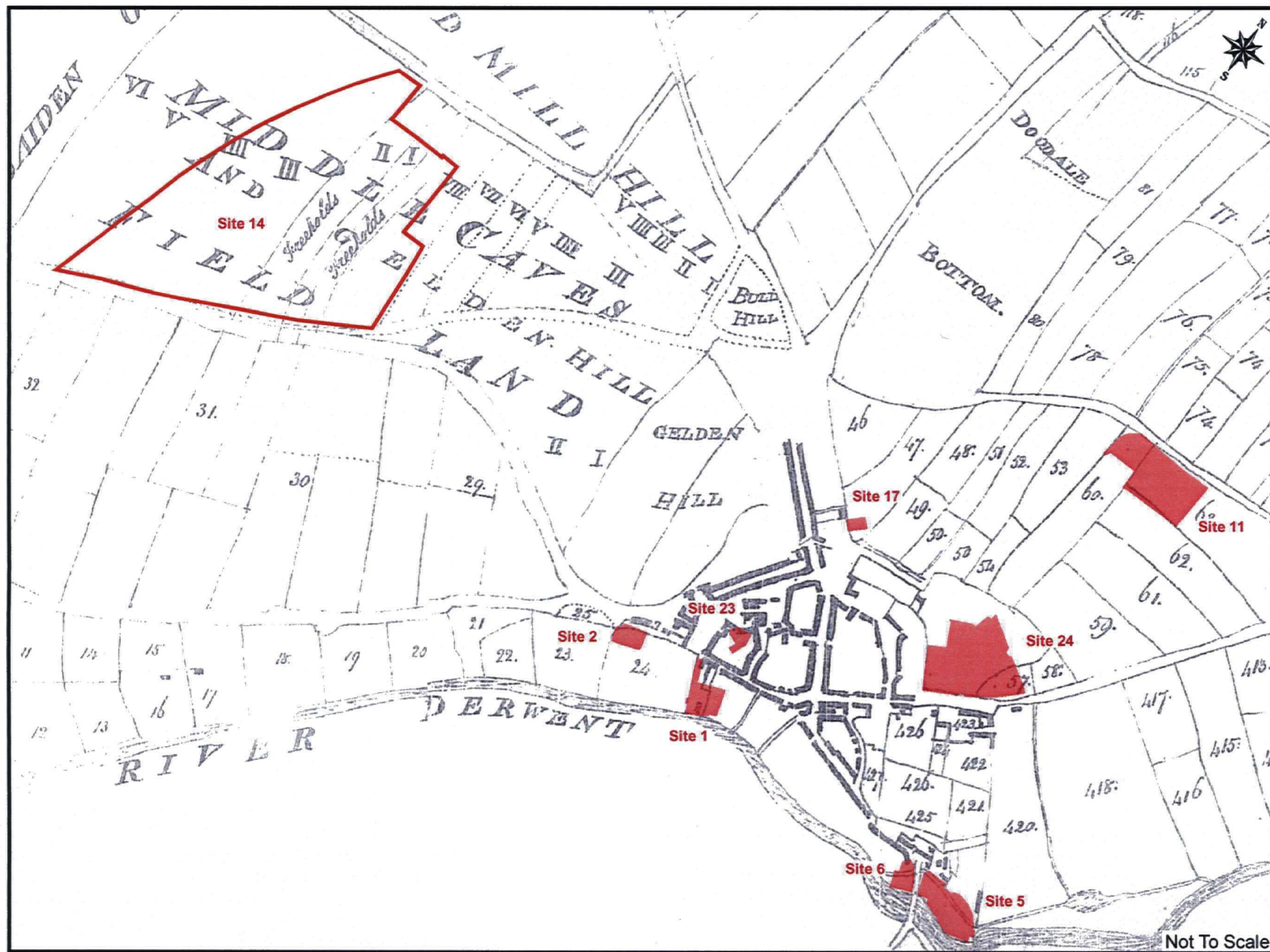


Figure 4. Extract from the 1770 Tithe Award Map for Malton: Sites 1, 2, 5, 6, 11, 14, 17, 23 and 24

MAP 04-07-07

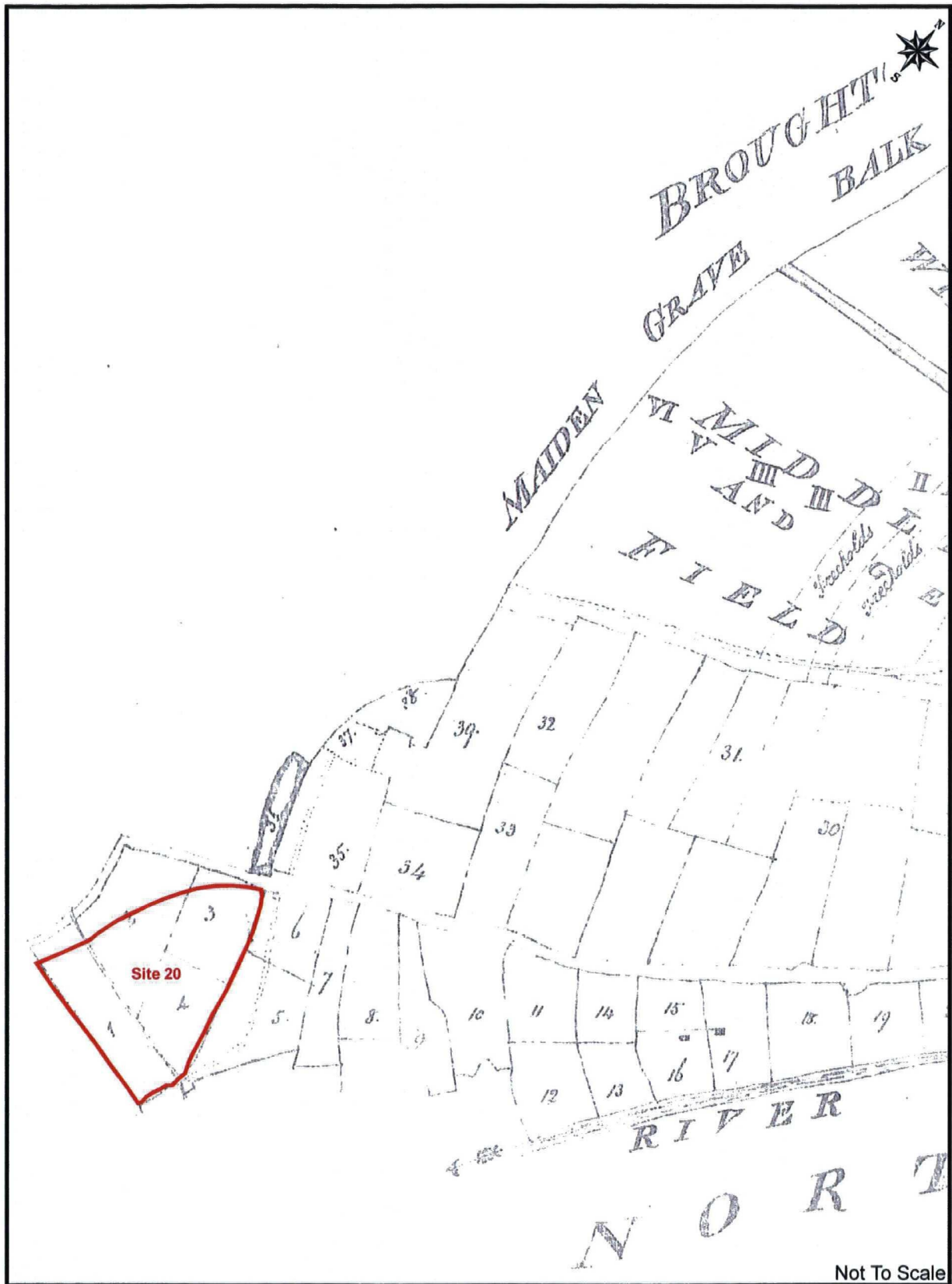


Figure 5. Extract from the 1770 Tithe Award Map for Malton: Site 20



Figure 6. Extract from a 1770 Map of the Town of Malton: Site 23



Figure 7. Extract from Ralph Burton's 1801 Map of Malton: Sites 1 and 2

MAP 04-07-07

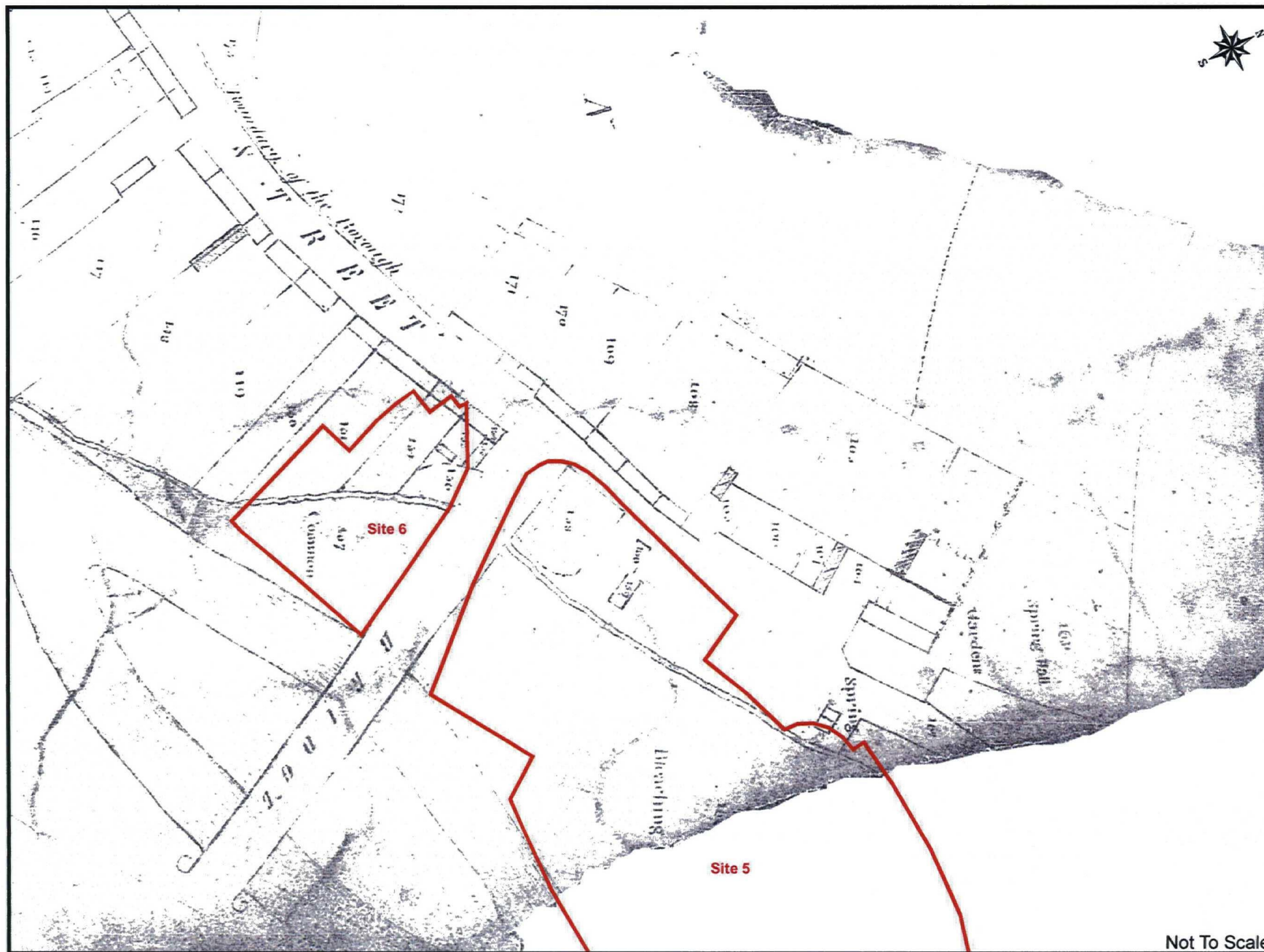


Figure 8. Extract from the Ralph Burton's 1801 Map of Malton: Sites 5 and 6

MAP 04-07-07



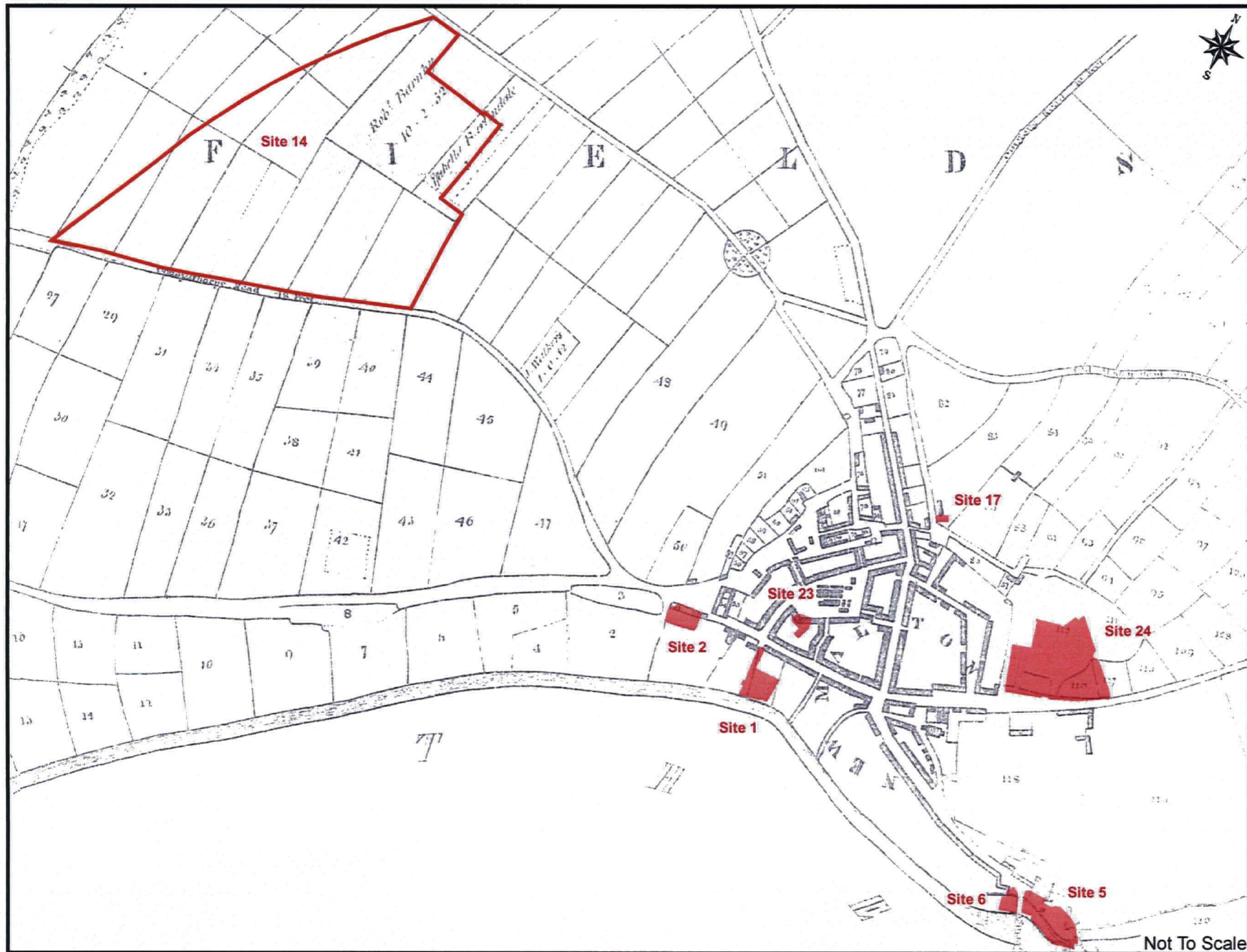
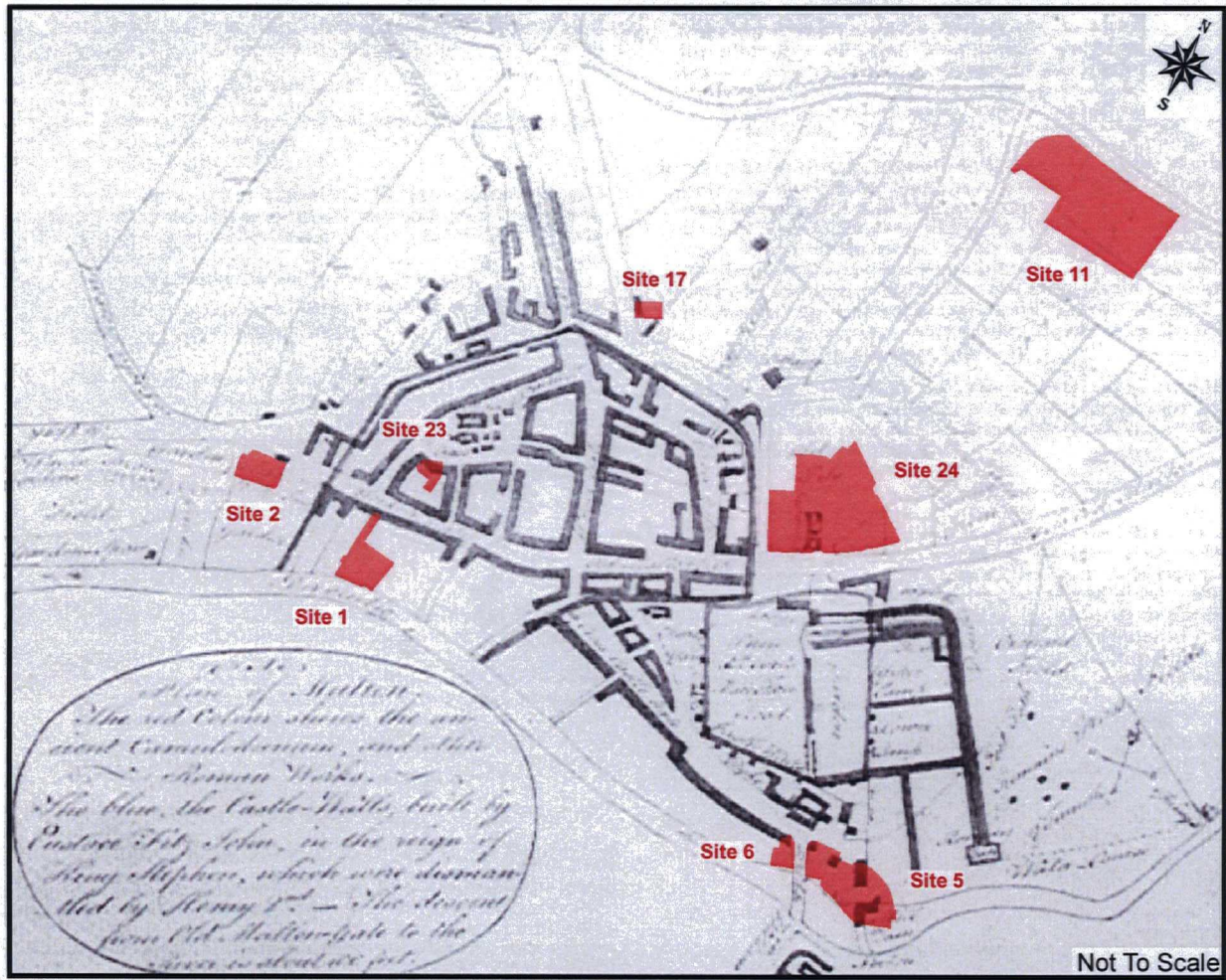


Figure 9. Extract from the 1805 Enclosure Award Map for Malton: Sites 1, 2, 5, 6, 14, 17, 23 and 24

MAP 04-07-07



Figure 10. Extract from the 1805 Enclosure Award Map for Malton: Sites 9 and 10



**Figure 11.** Thomas Hinderwell's 1825 Plan of Malton: Sites 1, 2, 5, 6, 11, 17, 23 and 24

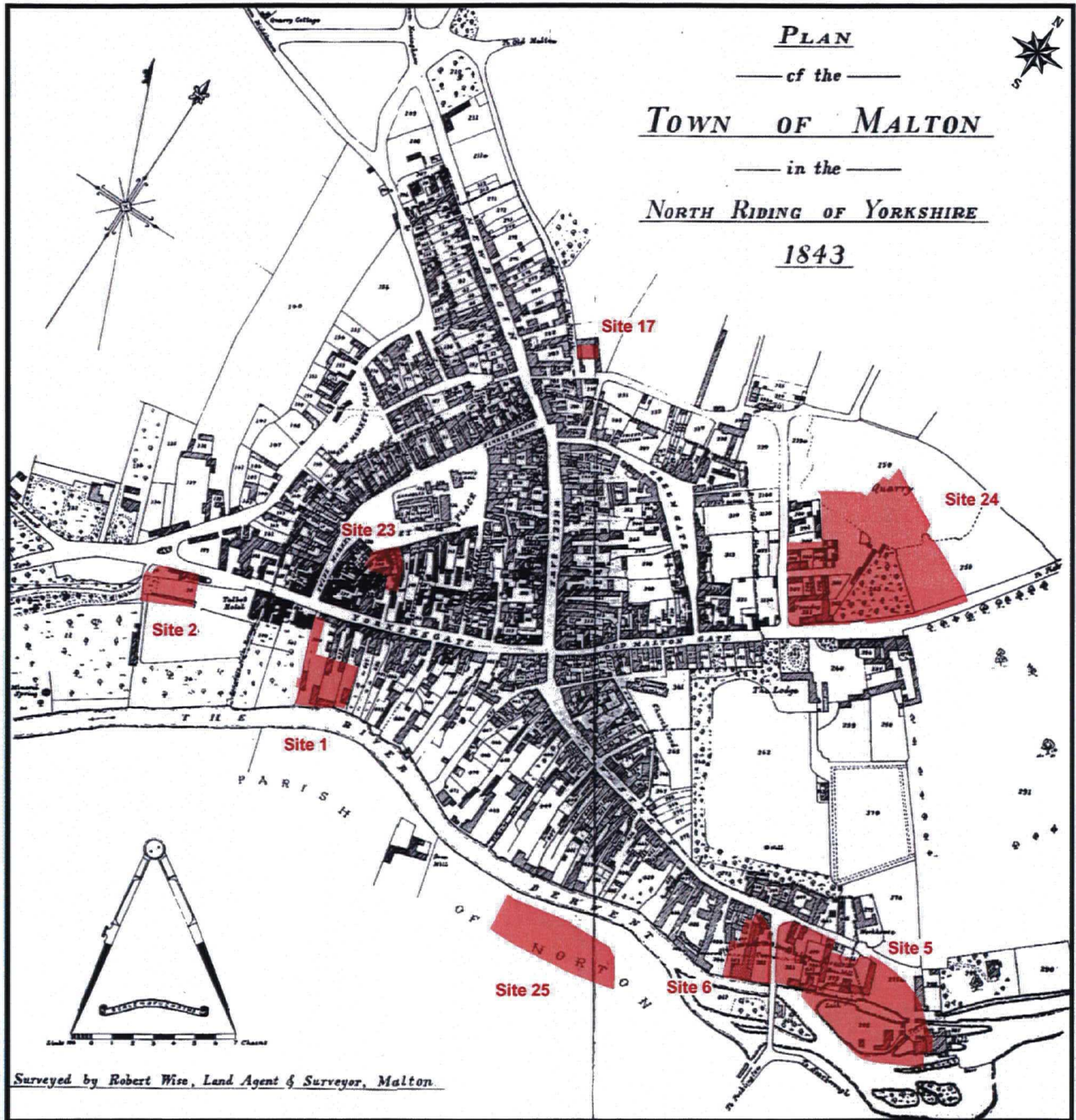


Figure 12. Robert Wise's 1843 Plan of the Town of Malton: Sites 1, 2, 5, 6, 17, 23, 24 and 25

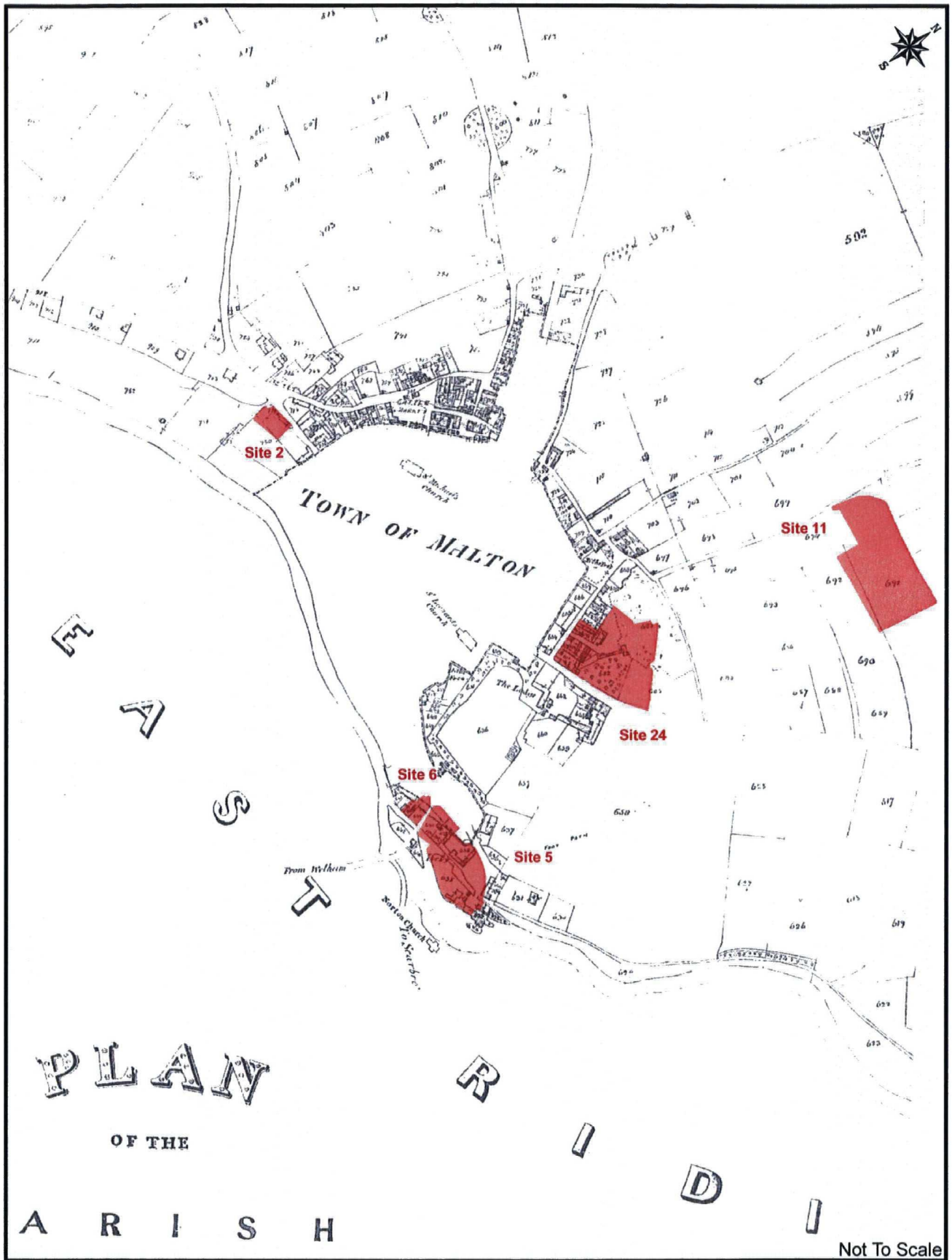


Figure 13. Extract from the 1844 Plan of the Parish of Malton: Sites 2, 5, 6, 11 and 24

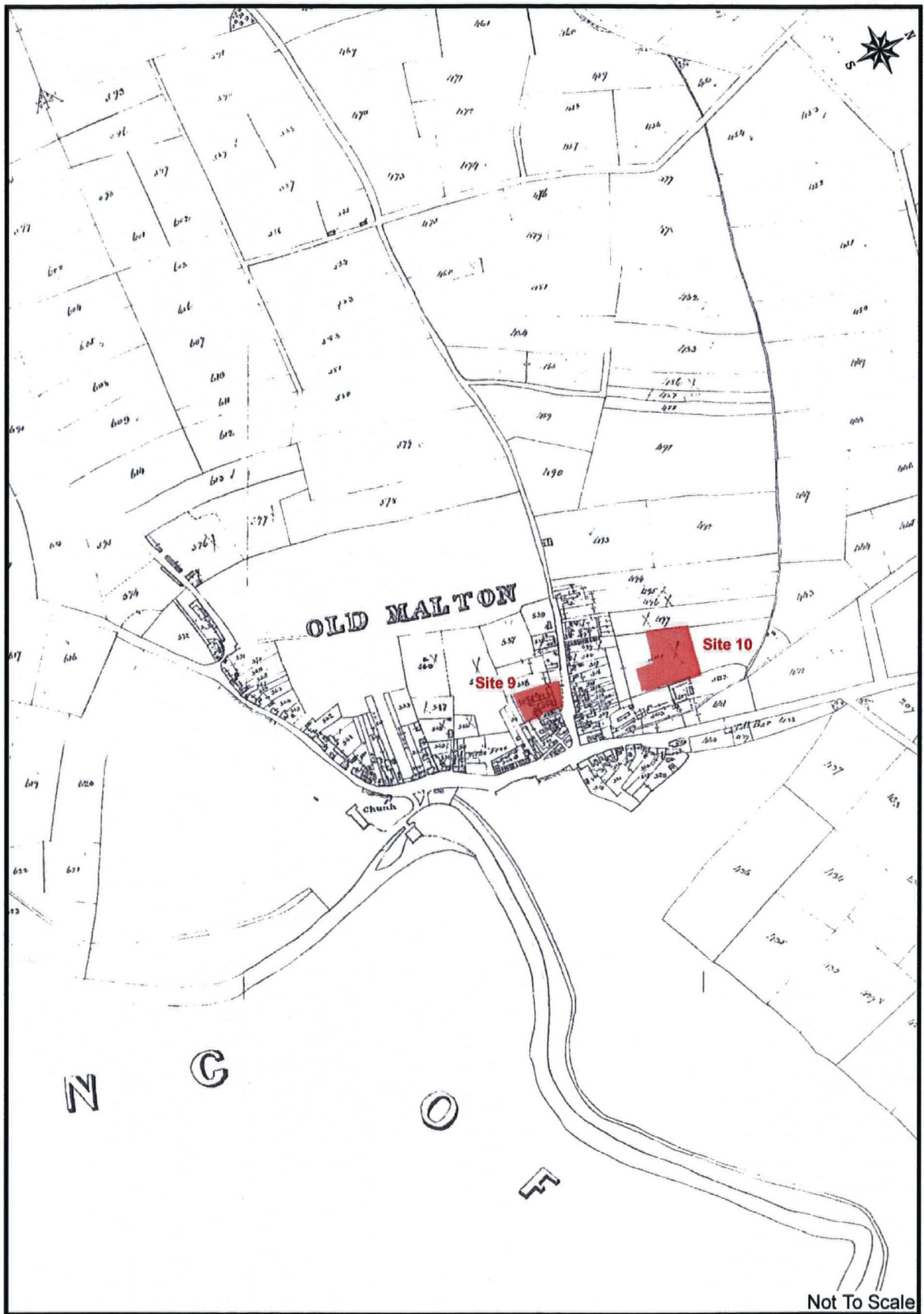


Figure 14. Extract from the 1844 *Plan of the Parish of Malton*: Sites 9 and 10

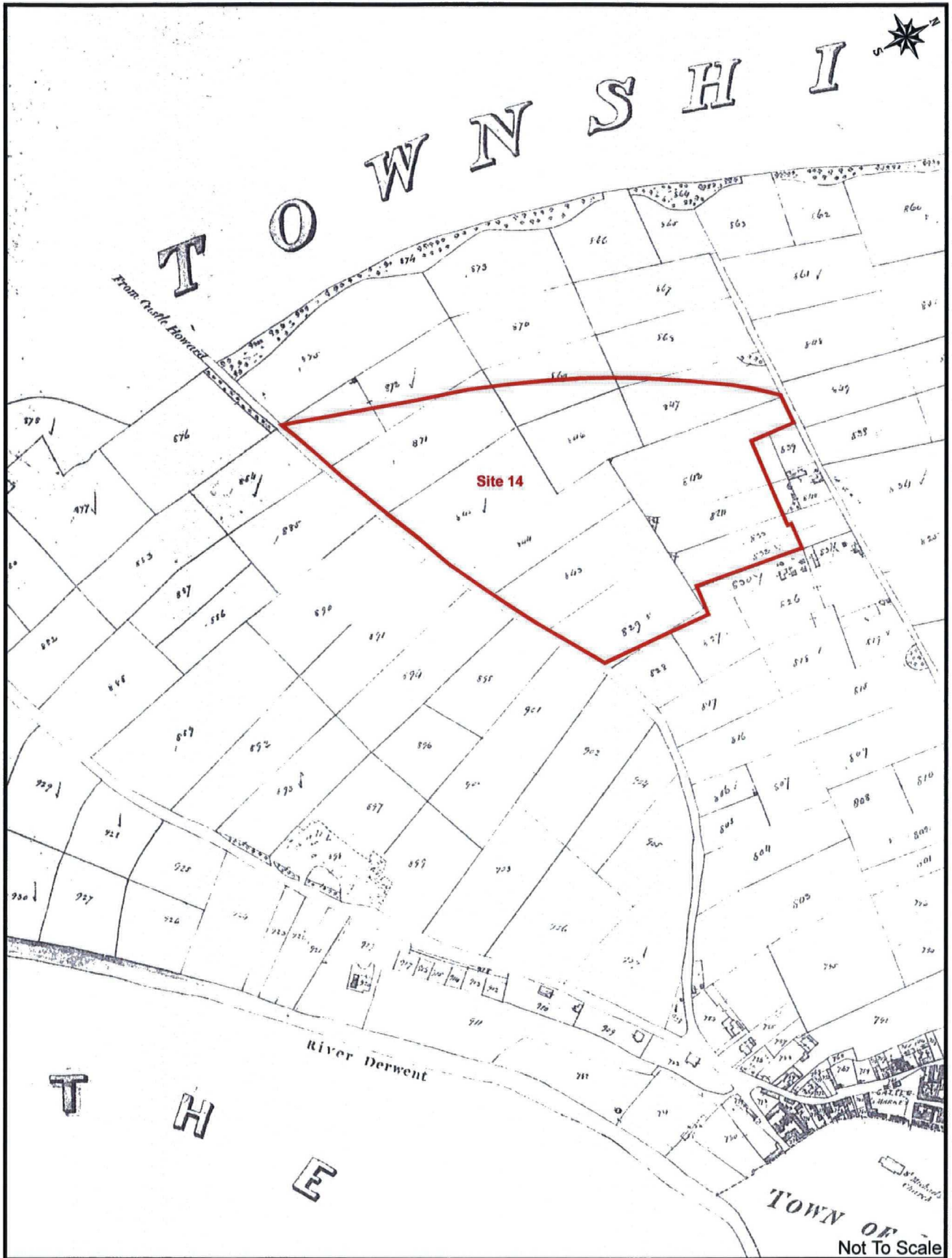


Figure 15. Extract from the 1844 Plan of the Parish of Malton: Site 14

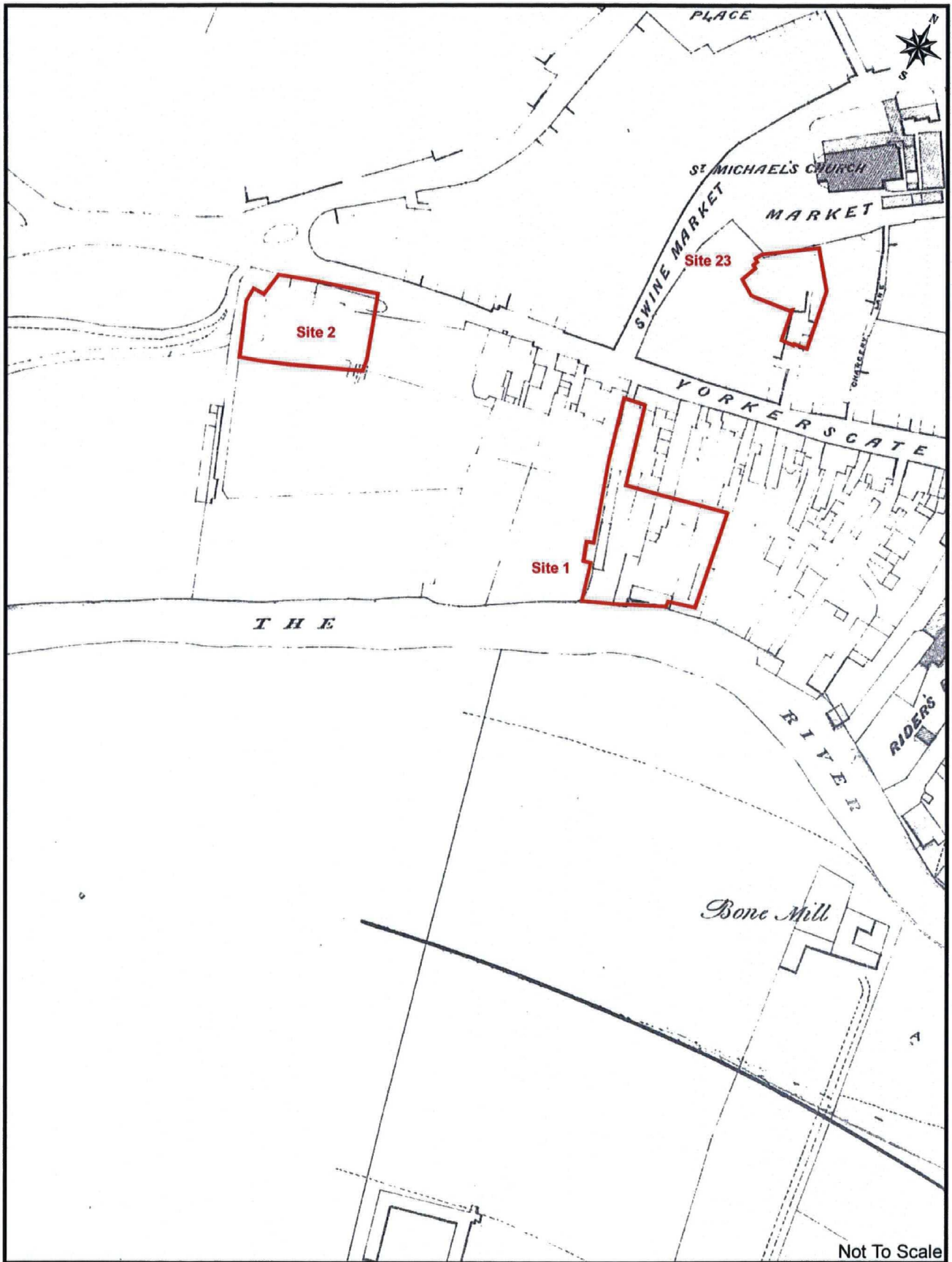


Figure 16. Extract from an 1844 Map of Malton: Sites 1, 2 and 23



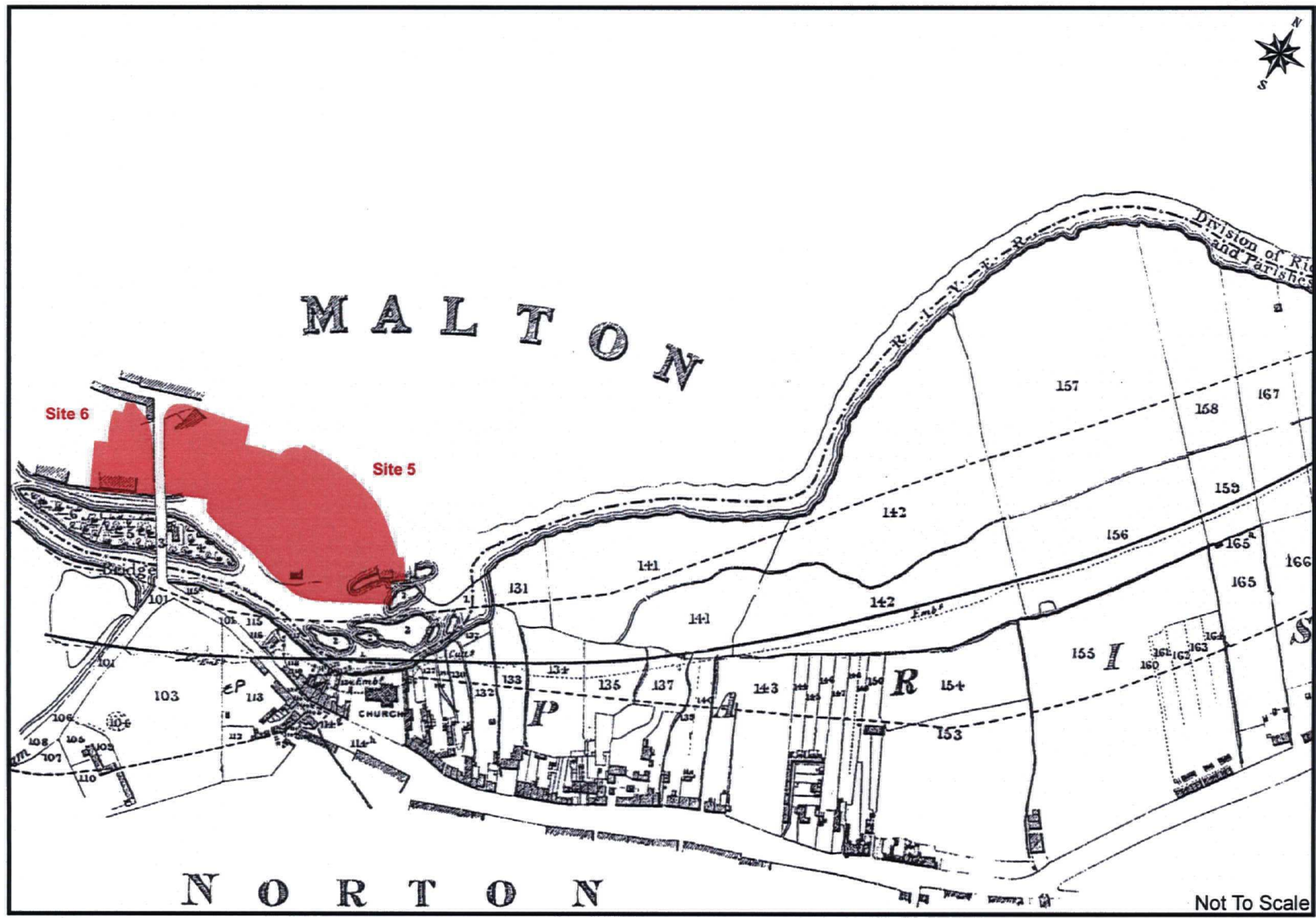


Figure 17. Extract from Map of Proposed Railway Route, circa 1845: Sites 5 and 6

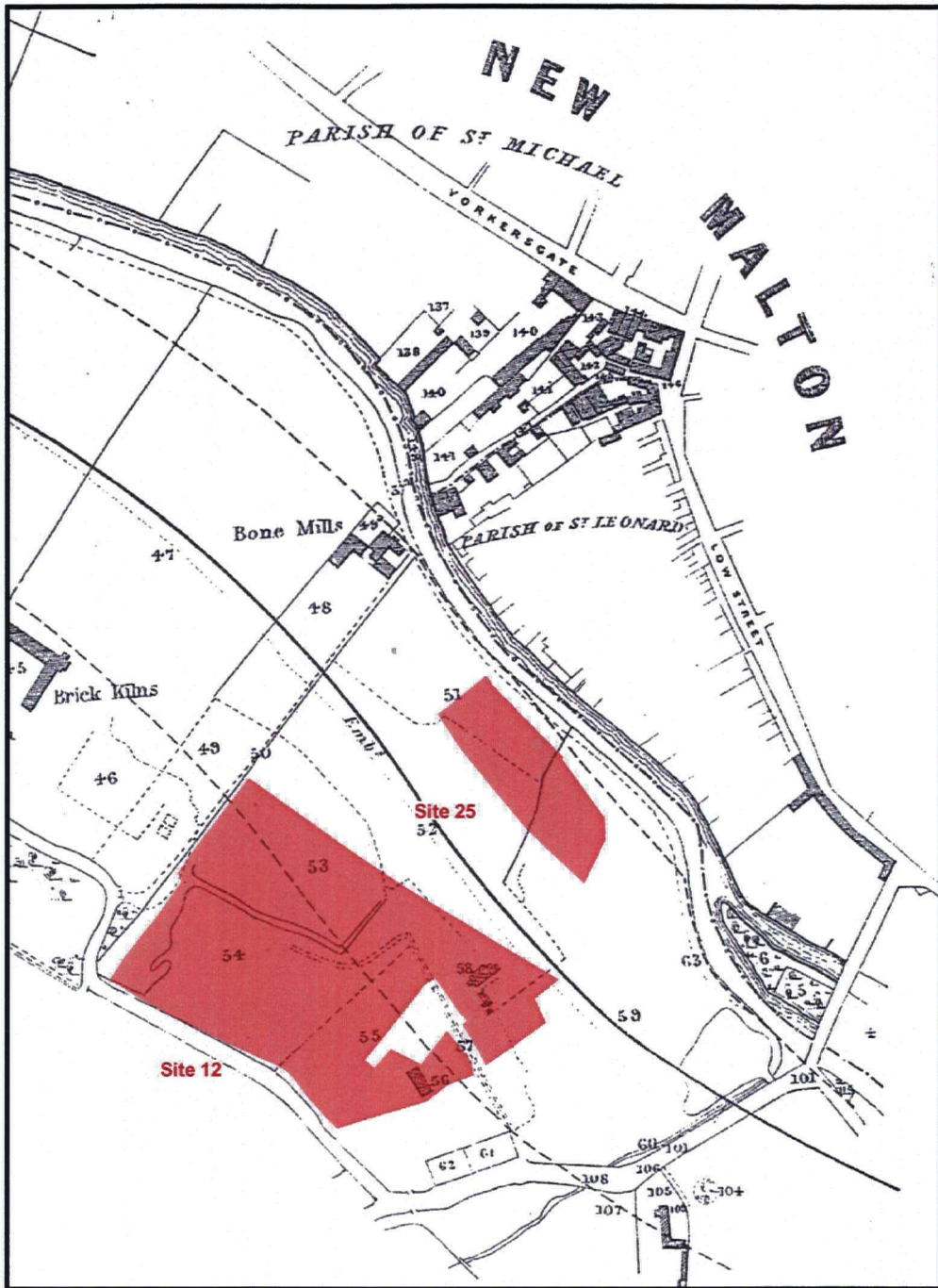


Figure 18. Extract from Map of Proposed Railway Route, circa 1845:  
Sites 12 and 25

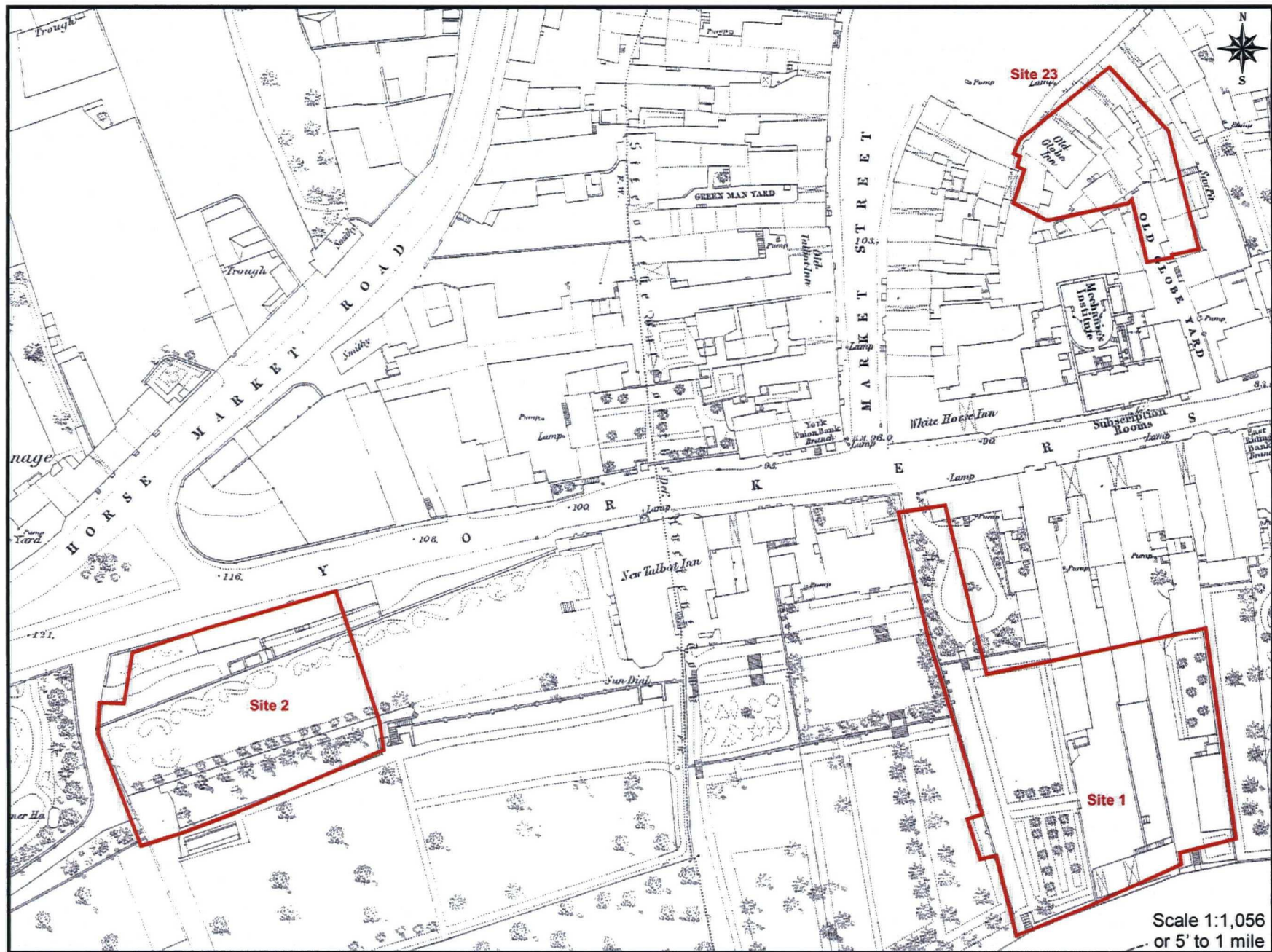


Figure 19. Extract from the 1853 First Edition Town Series Ordnance Survey Map: Sites 1, 2 and 23

MAP 04-07-07



Figure 20. Extract from the 1853 First Edition Town Series Ordnance Survey Map: Site 11

MAP 04-07-07