

Figure 21. Extract from the 1853 First Edition Town Series Ordnance Survey Map: Site 12



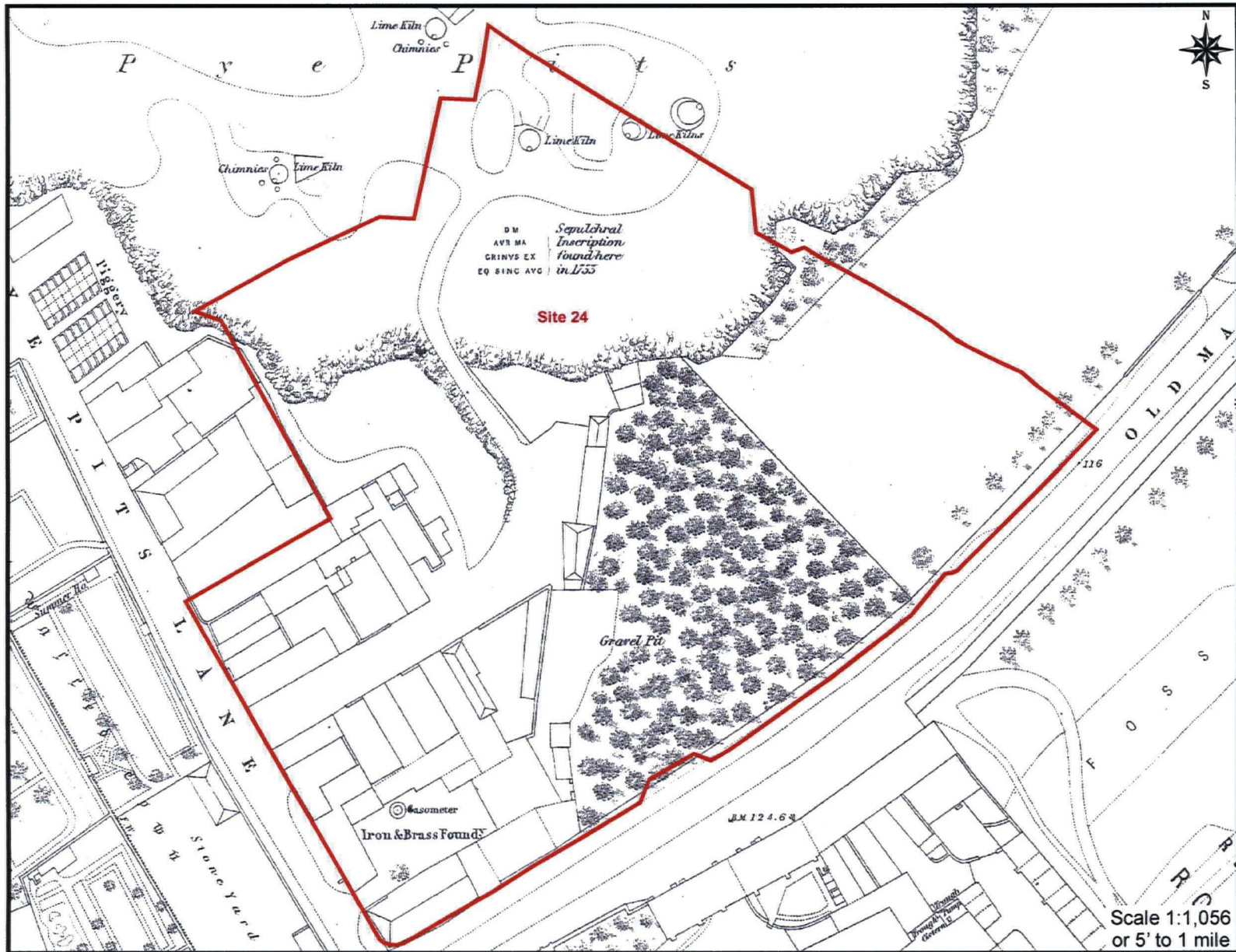


Figure 23. Extract from the 1853 First Edition Town Series Ordnance Survey Map: Site 24

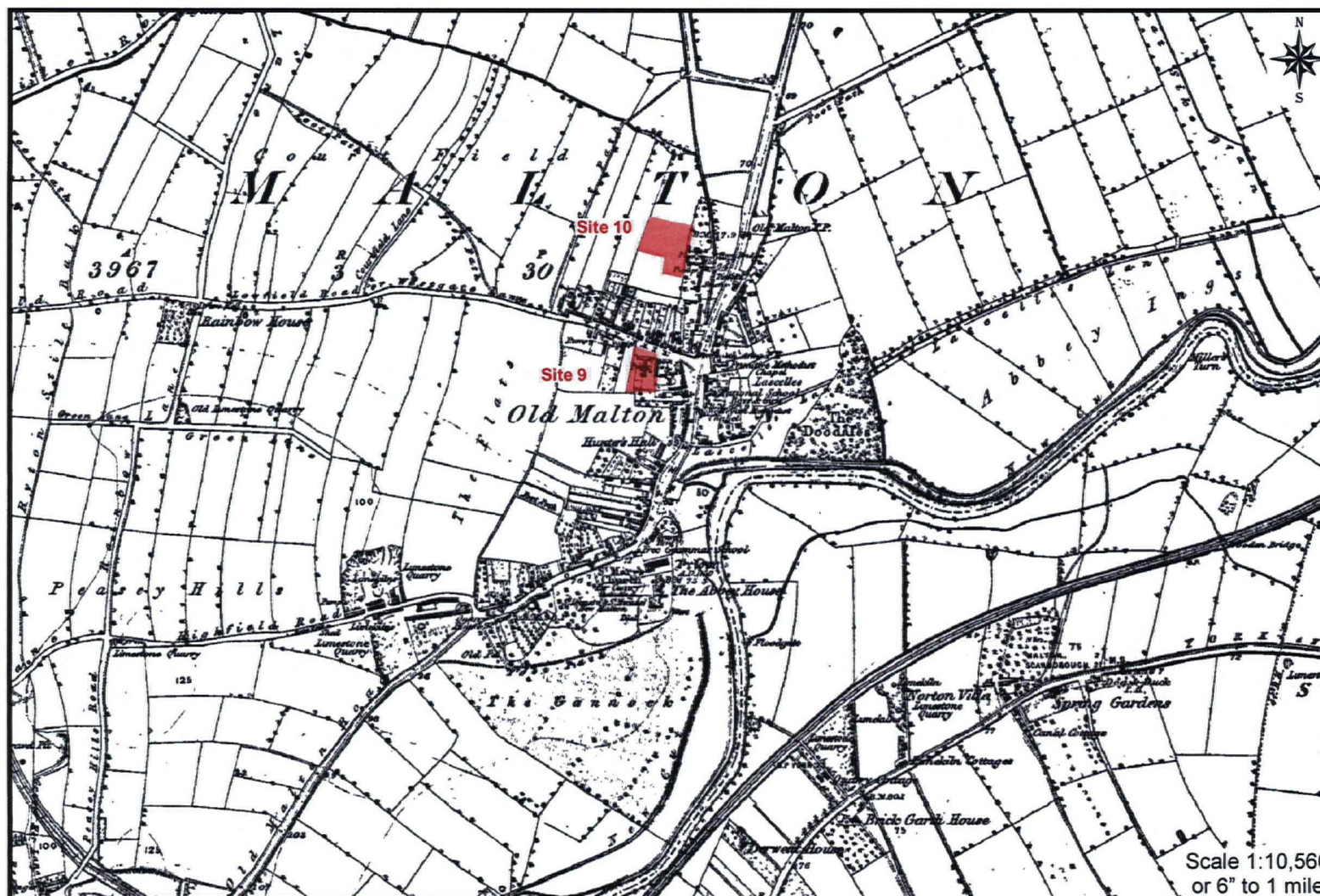


Figure 24. Extract from the 1854 First Edition Country Series Ordnance Survey Map: Sites 9 and 10

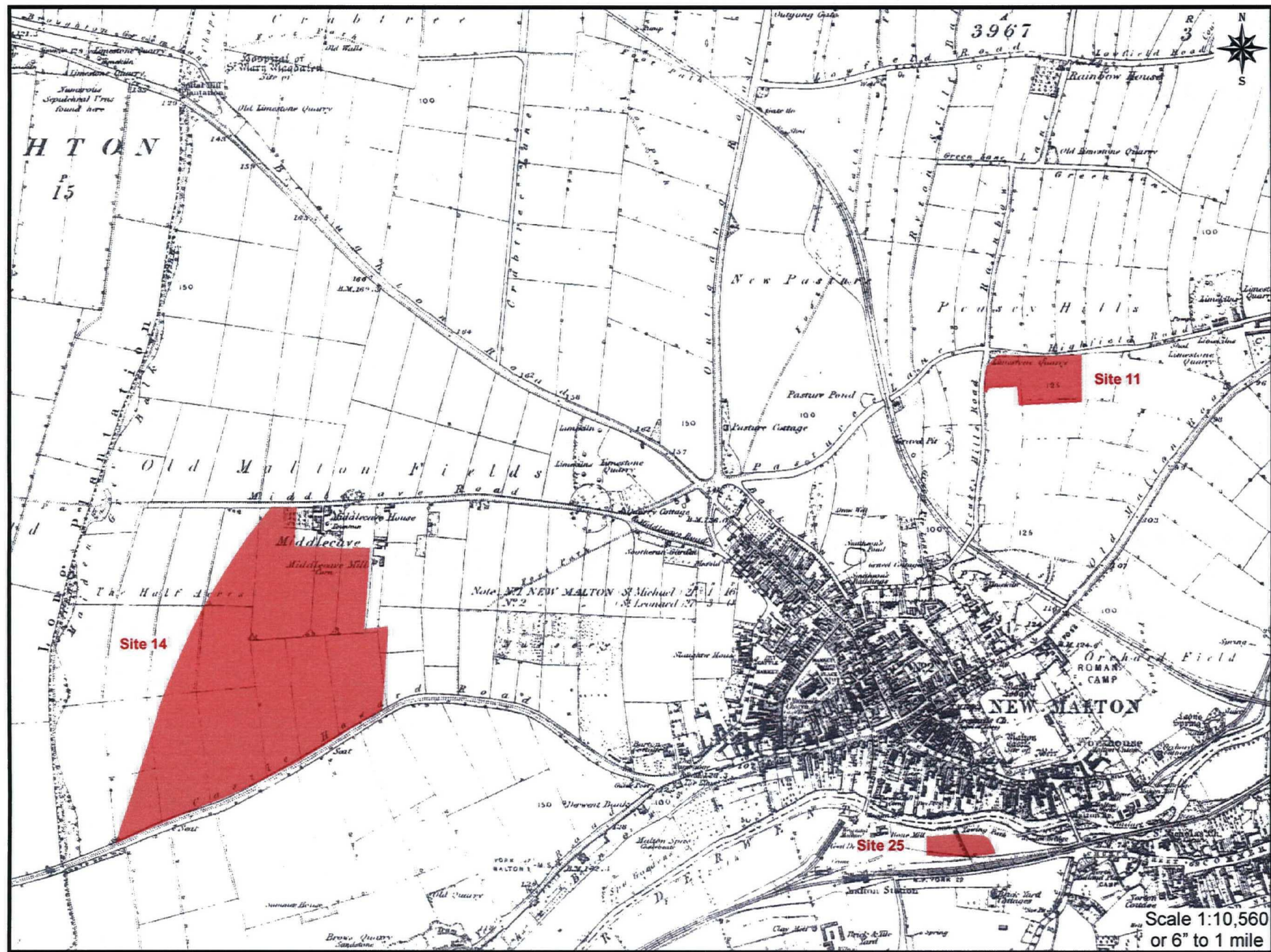


Figure 25. Extract from the 1854 First Edition County Series Ordnance Survey Map: Sites 11, 14 and 25

MAP 04-07-07

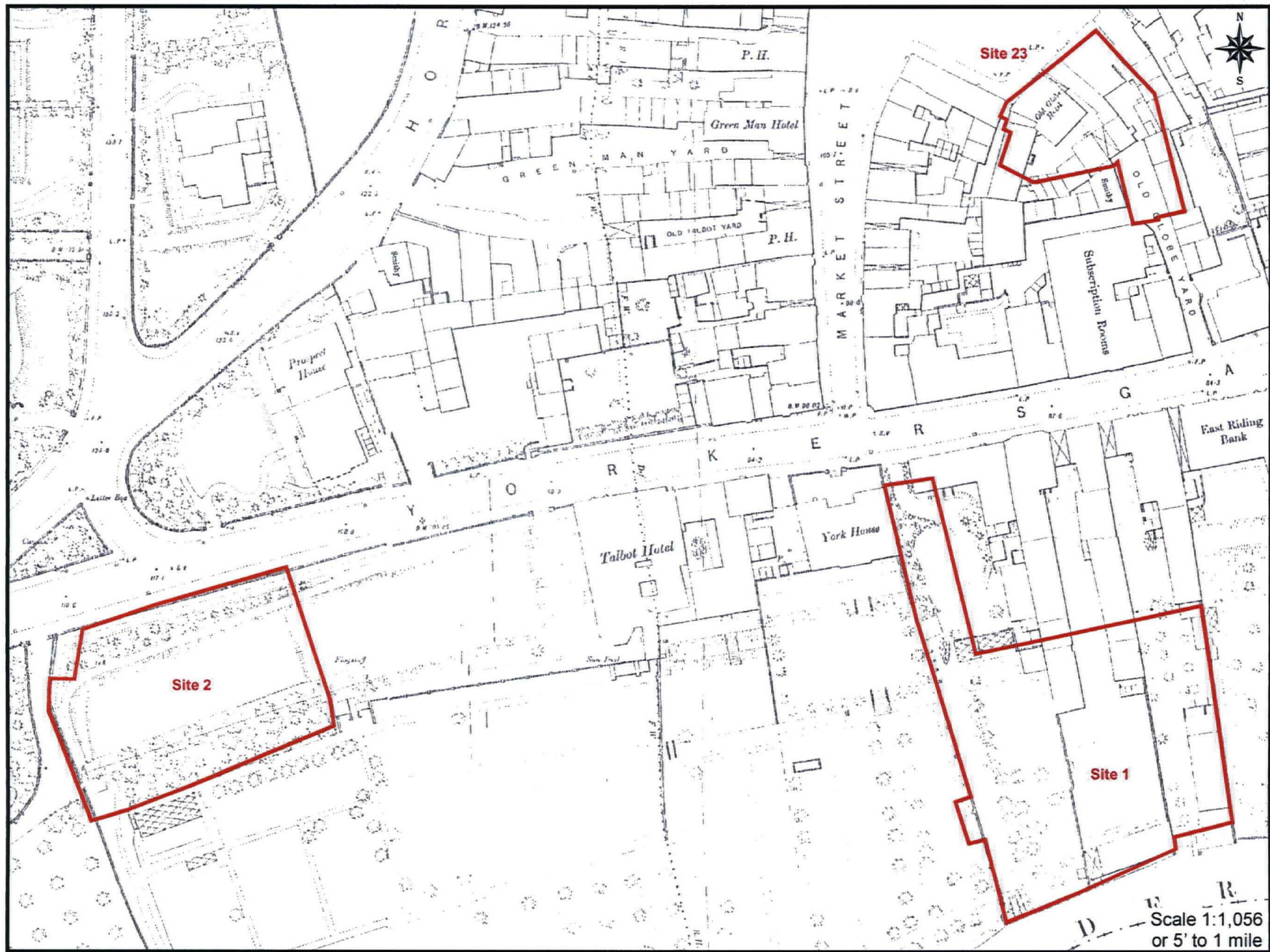


Figure 26. Extract from the 1891 Second Edition Town Series Ordnance Survey Map: Sites 1, 2 and 23

MAP 04-07-07

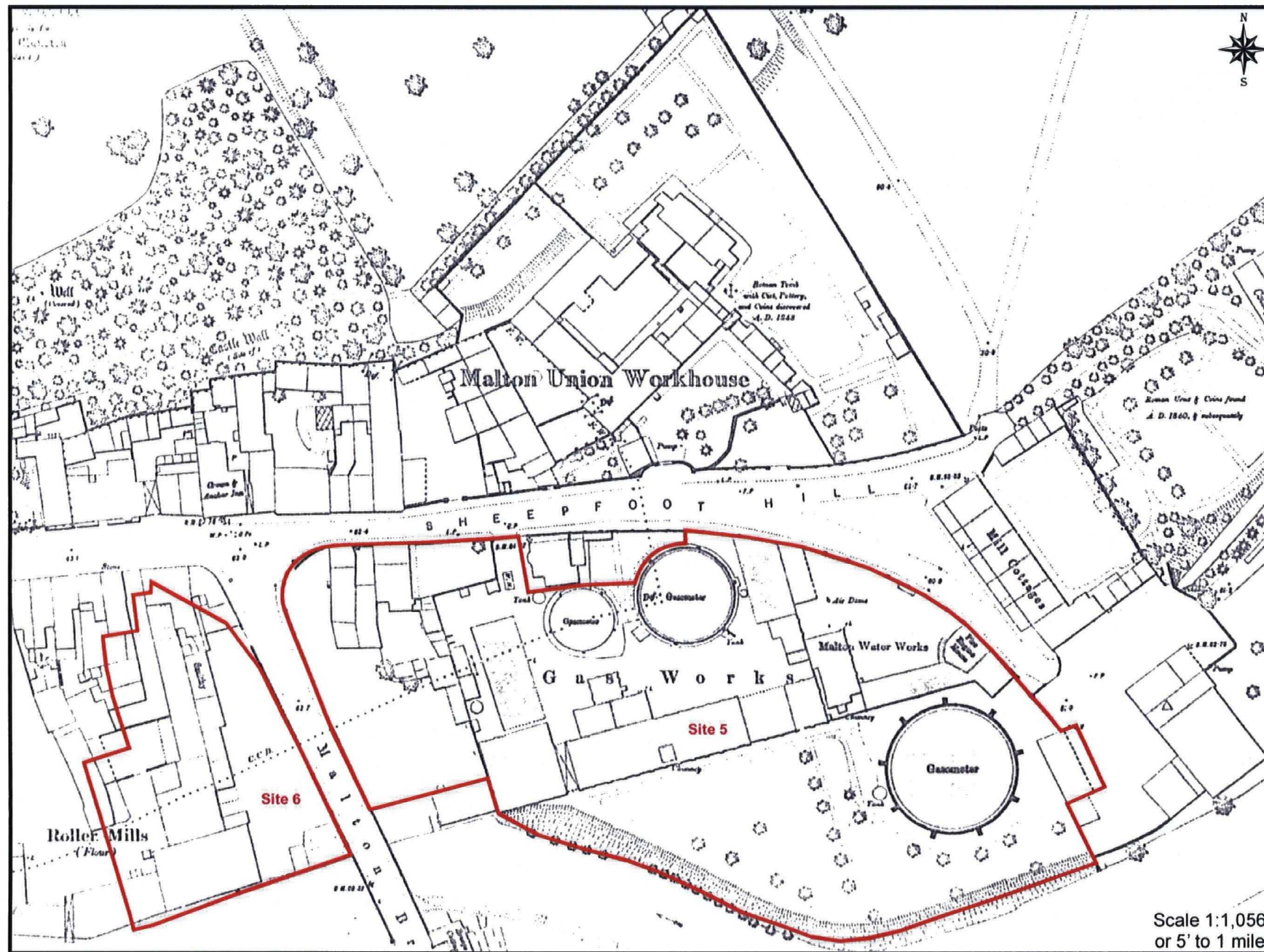


Figure 27. Extract from the 1891 Second Edition Town Series Ordnance Survey Map: Sites 5 and 6

Scale 1:1,056  
or 5' to 1 mile

MAP 04-07-07

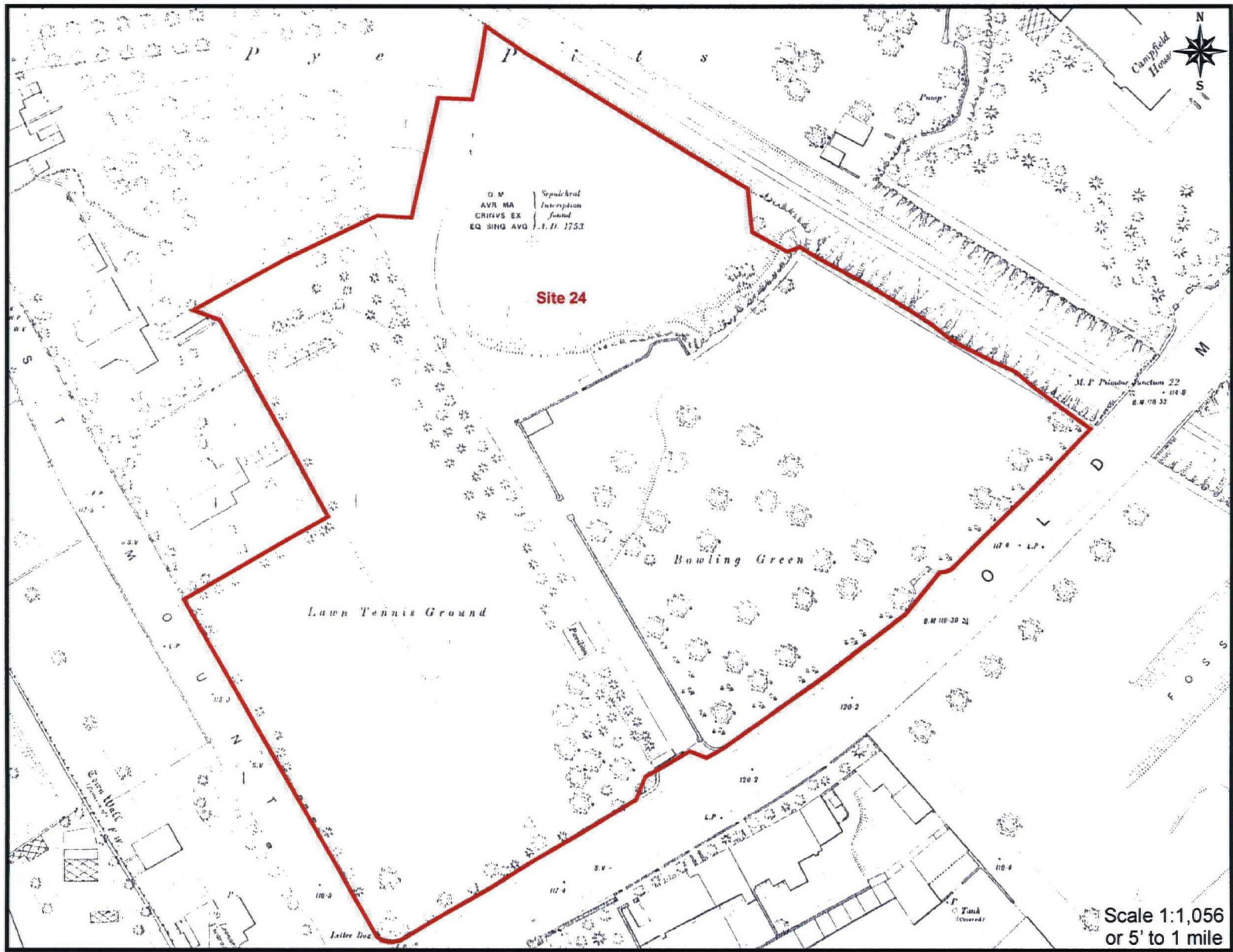


Figure 28. Extract from the 1891 Second Edition Town Series Ordnance Survey Map: Site 24



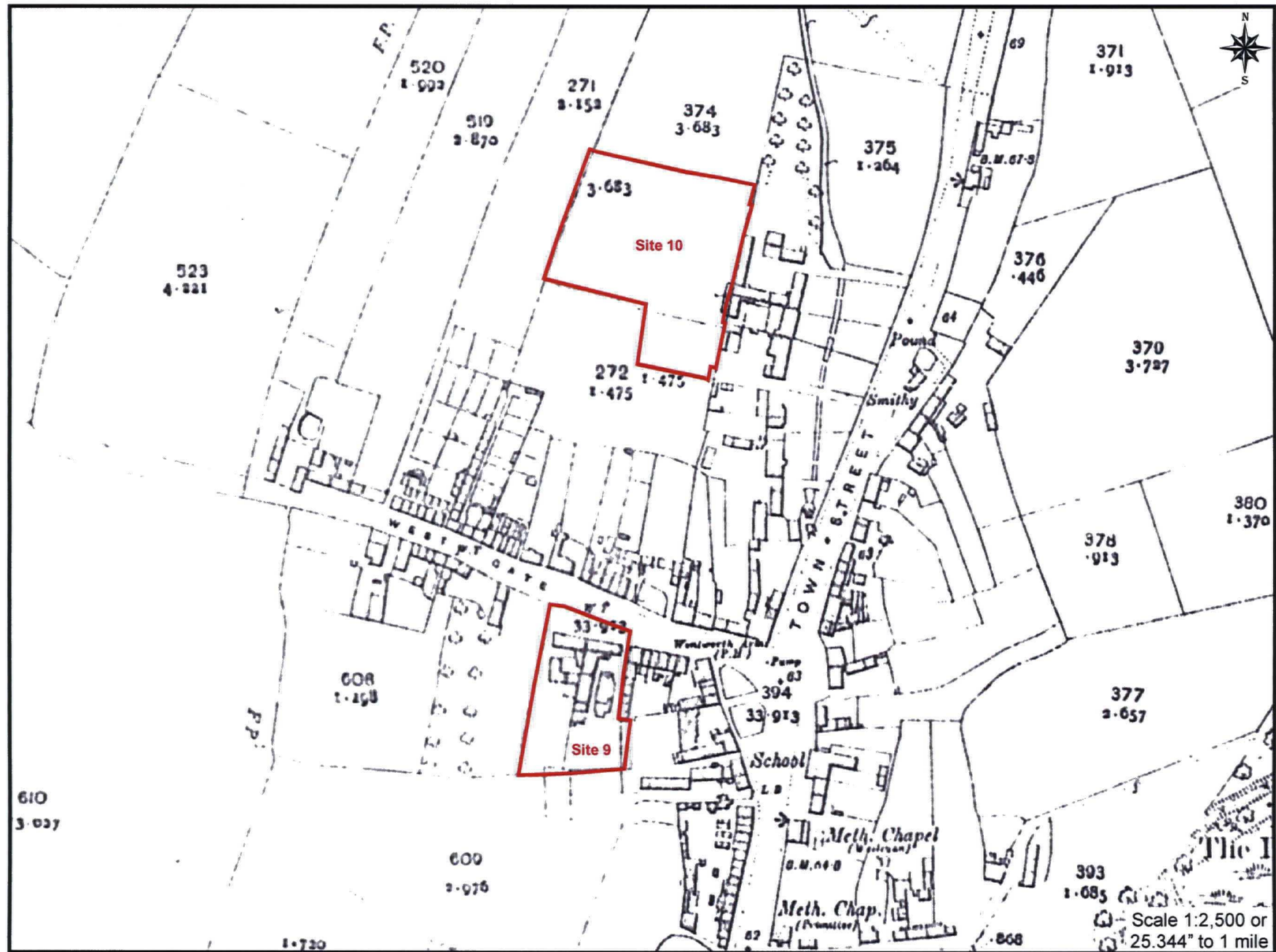


Figure 29. Extract from the 1911 and 1912 Editions Ordnance Survey Maps: Sites 9 and 10

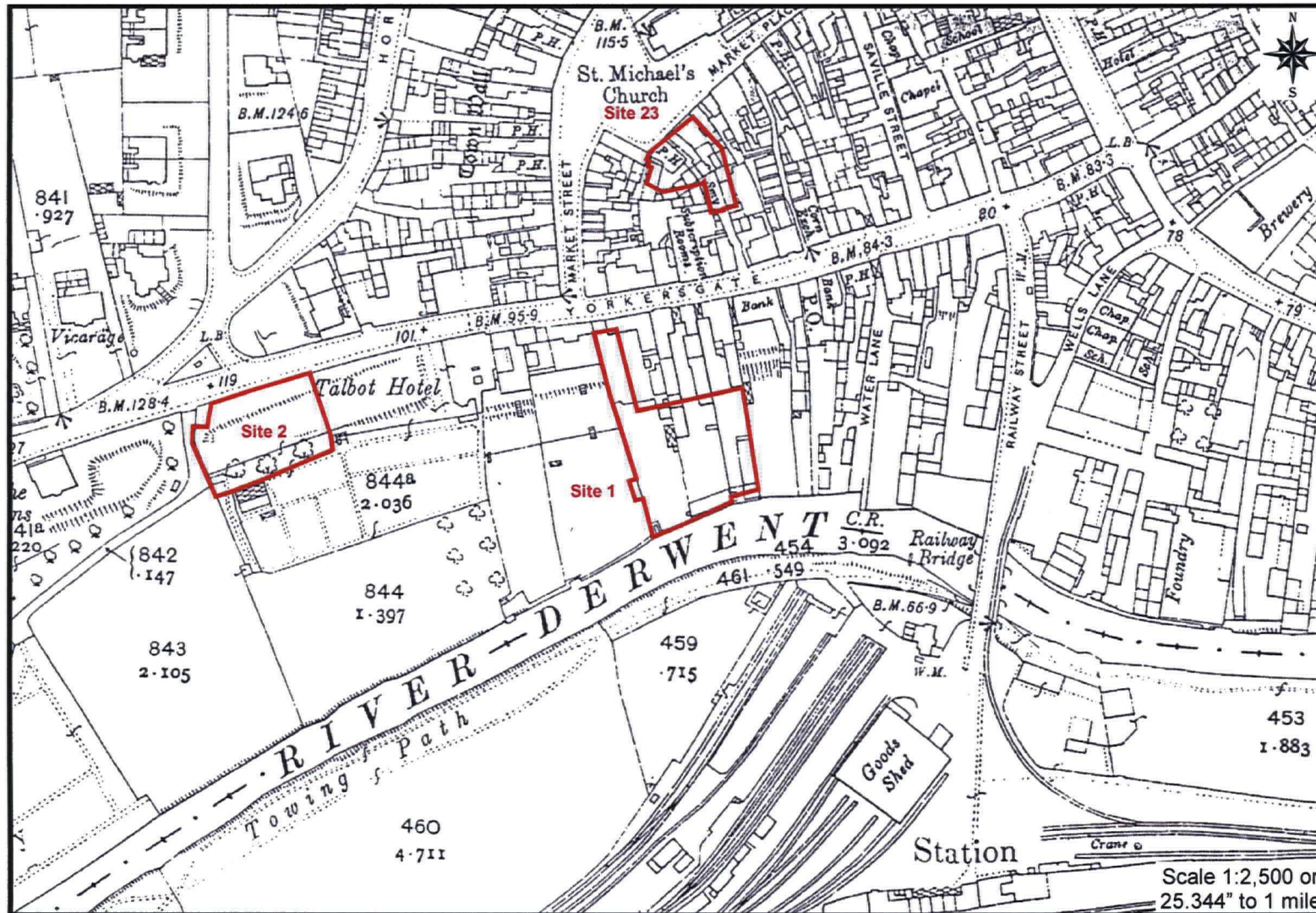


Figure 30. Extract from the 1911 Edition Ordnance Survey Map: Sites 1, 2 and 23

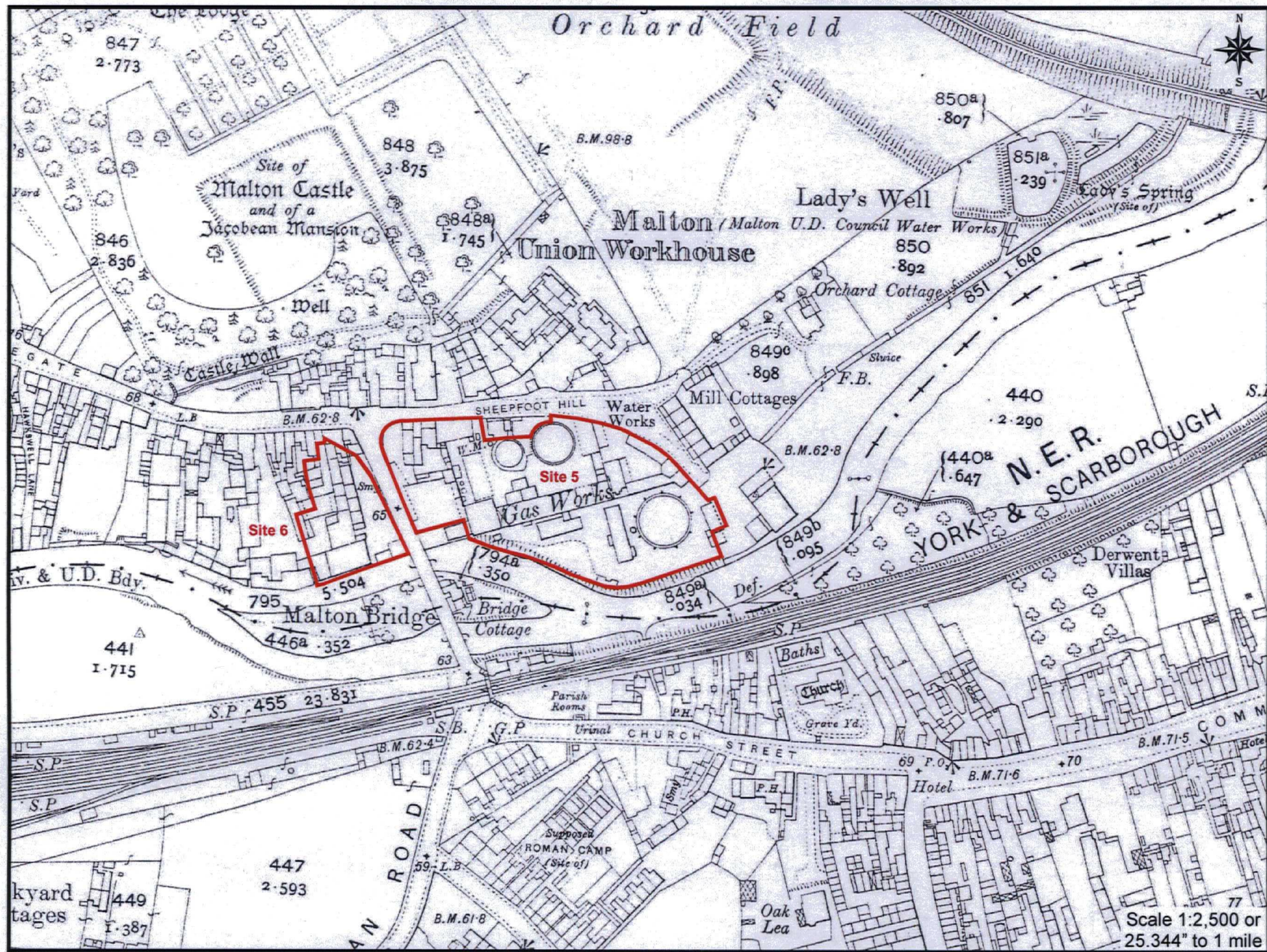


Figure 31. Extract from the 1911 Edition Ordnance Survey Map Sites 5 and 6





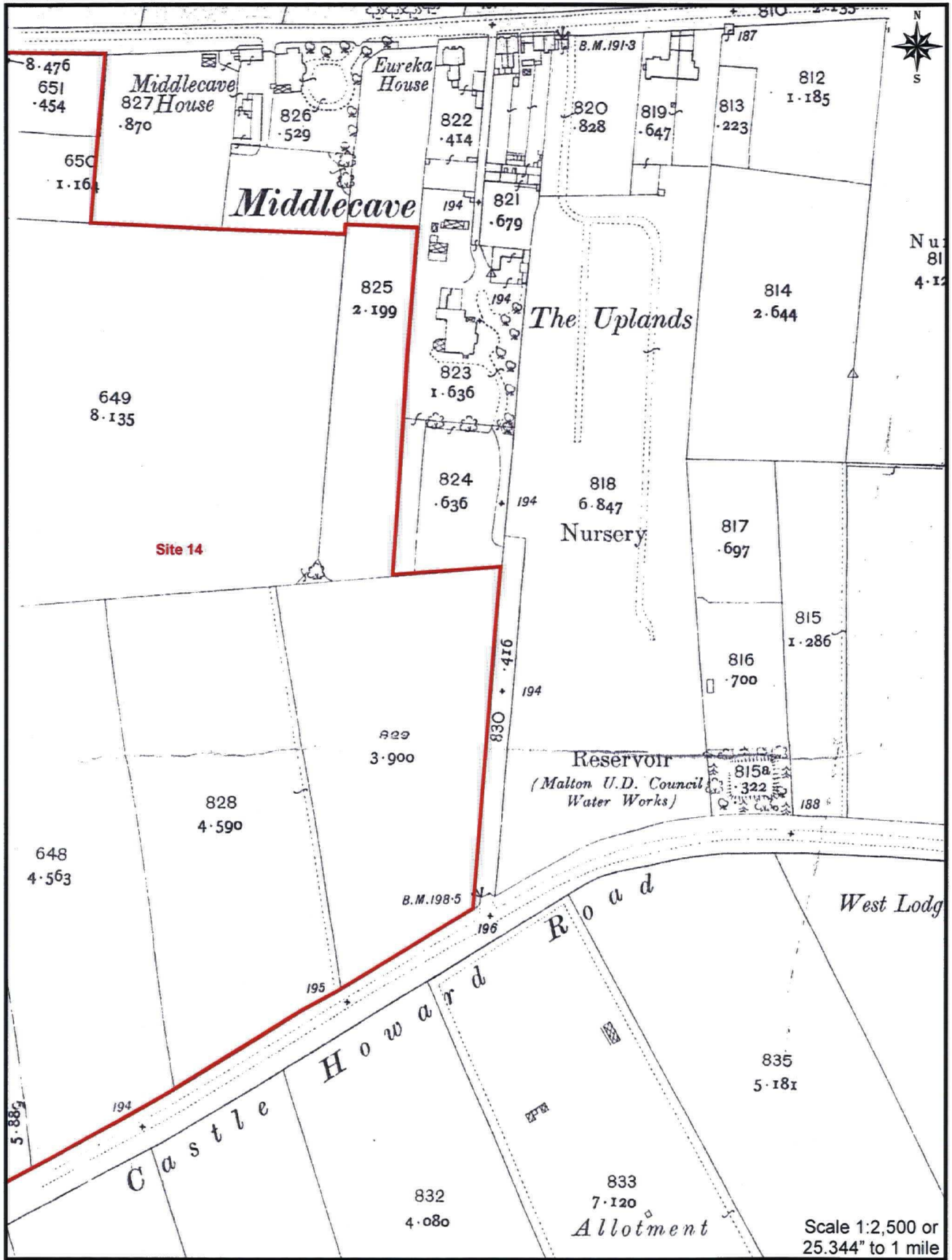


Figure 34. Extract from the 1911 Edition Ordnance Survey Map: Site 14

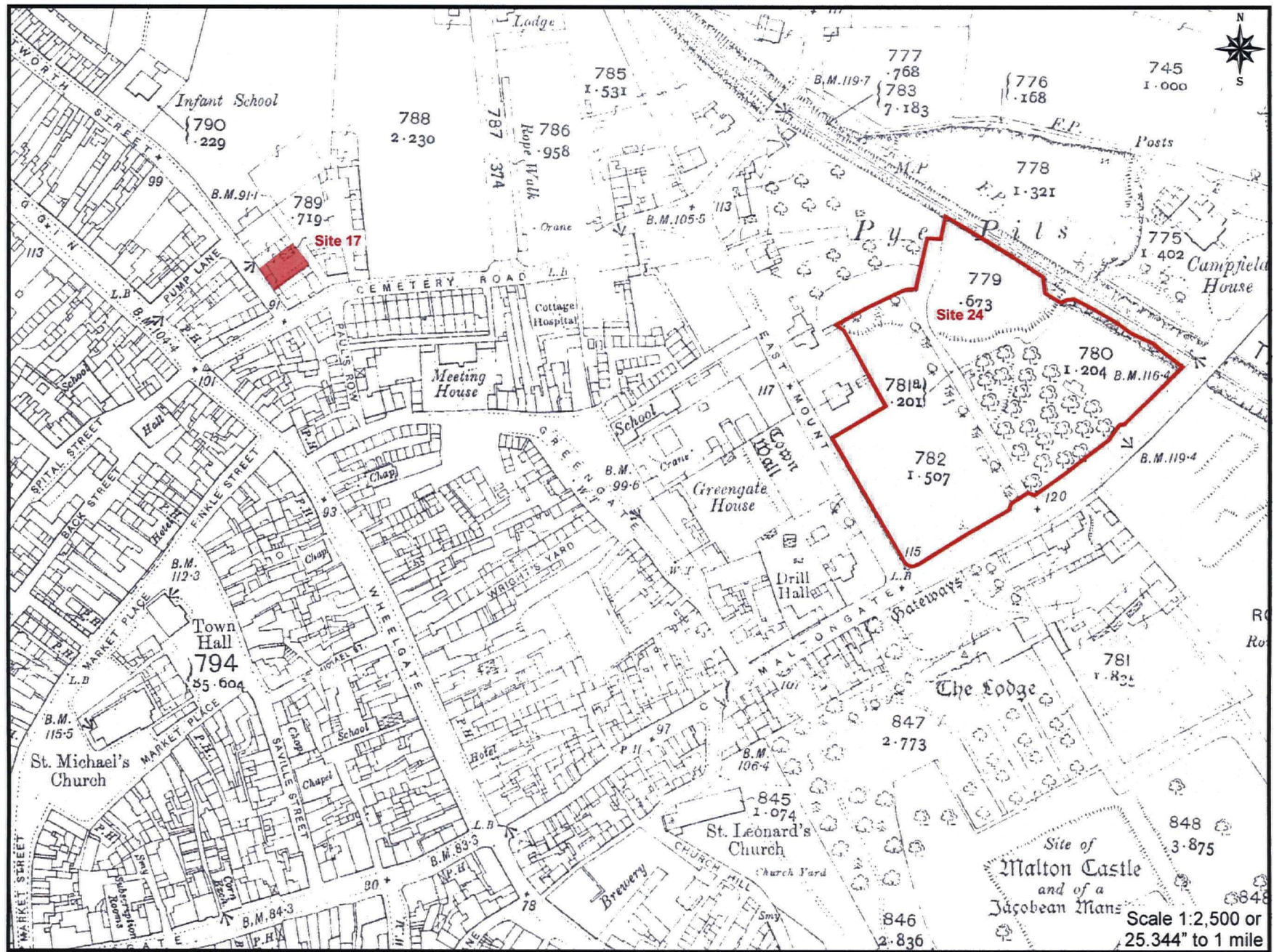


Figure 35. Extract from the 1911 Edition Ordnance Survey Map Sites 17 and 24

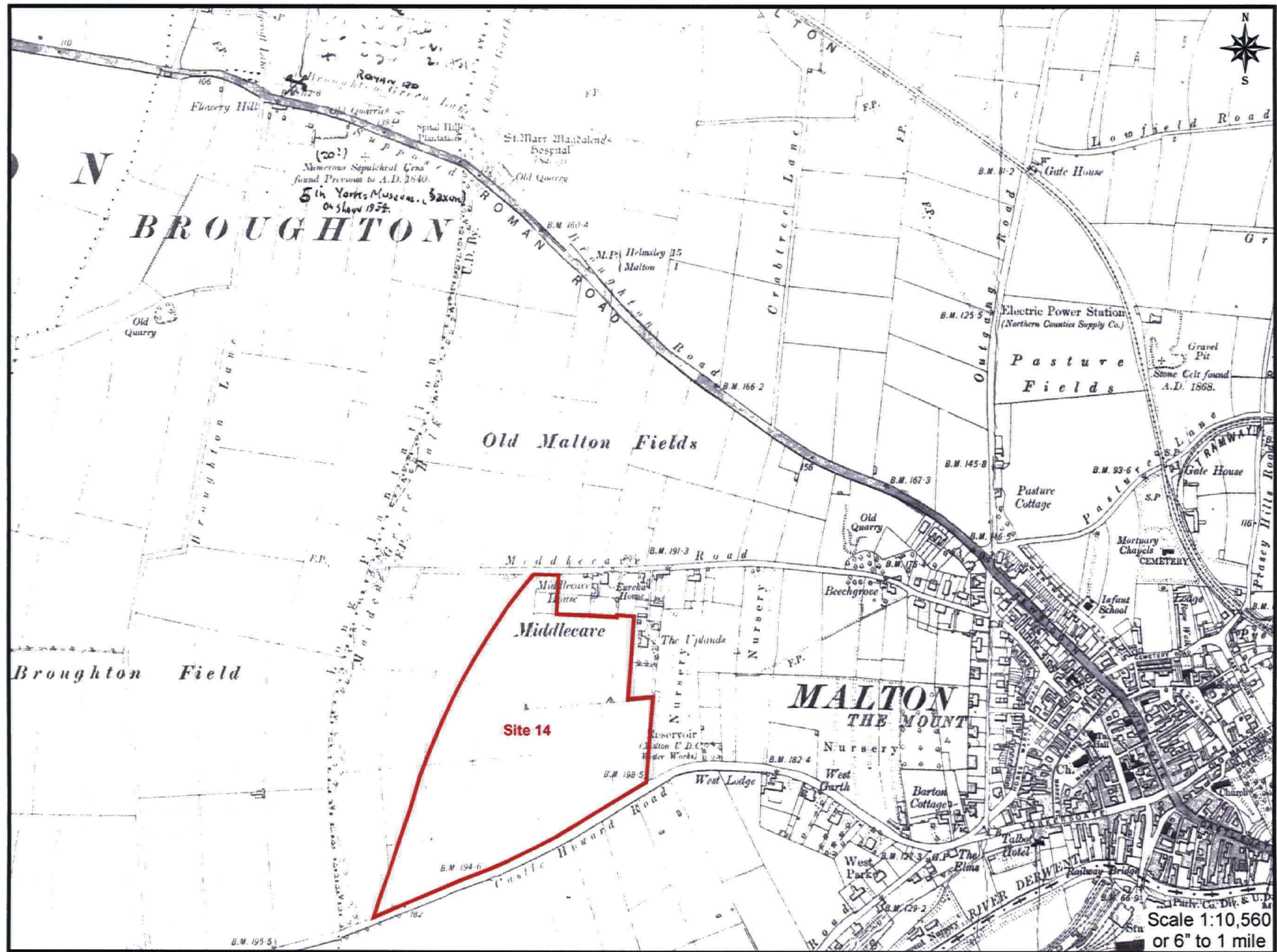


Figure 36. Extract from the 1913 Edition Ordnance Survey Map<sup>2</sup> Site 14



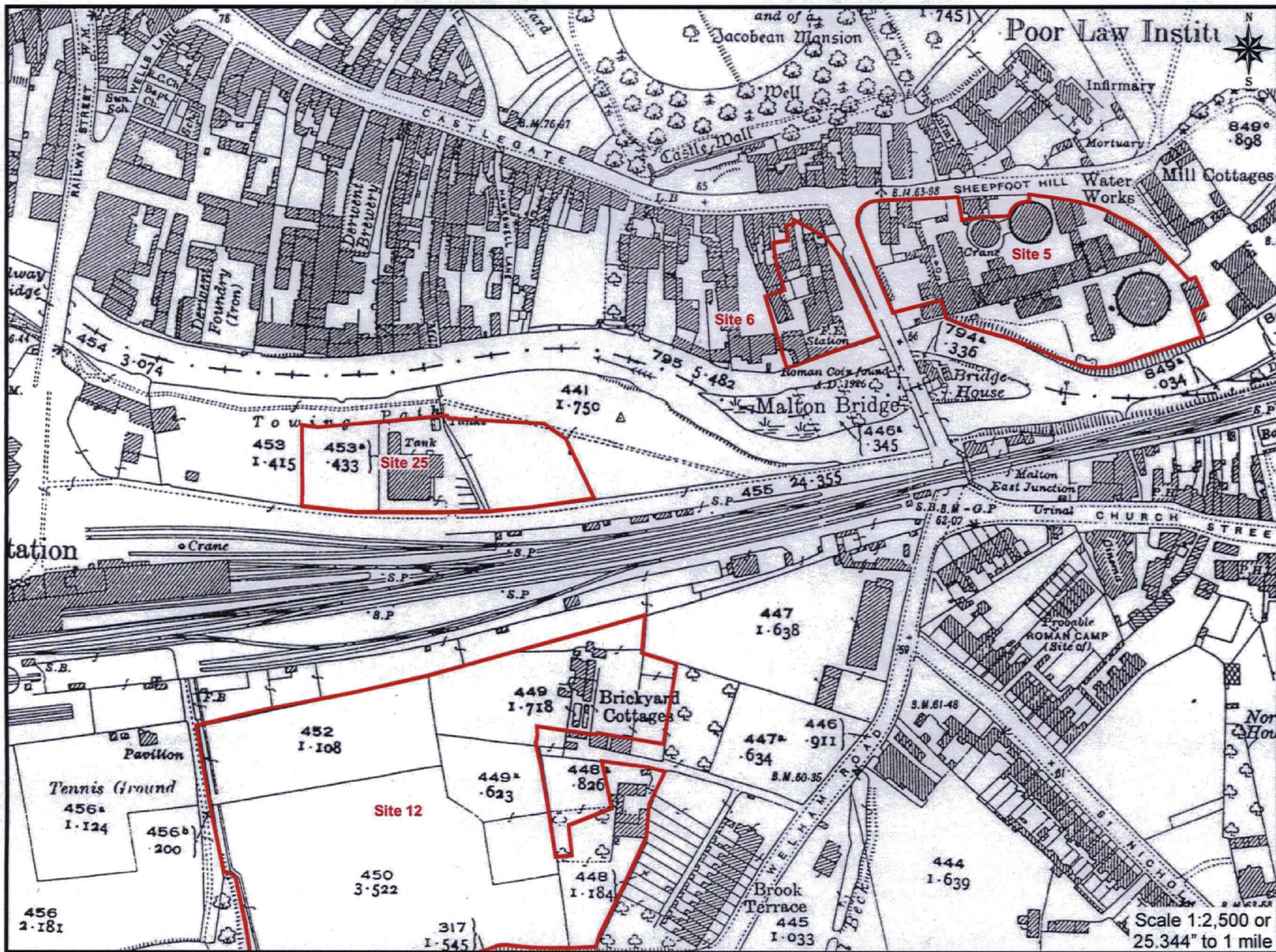


Figure 37. Extract from the 1924 Edition Ordnance Survey Map 23 Sites 5, 6, 12 and 25

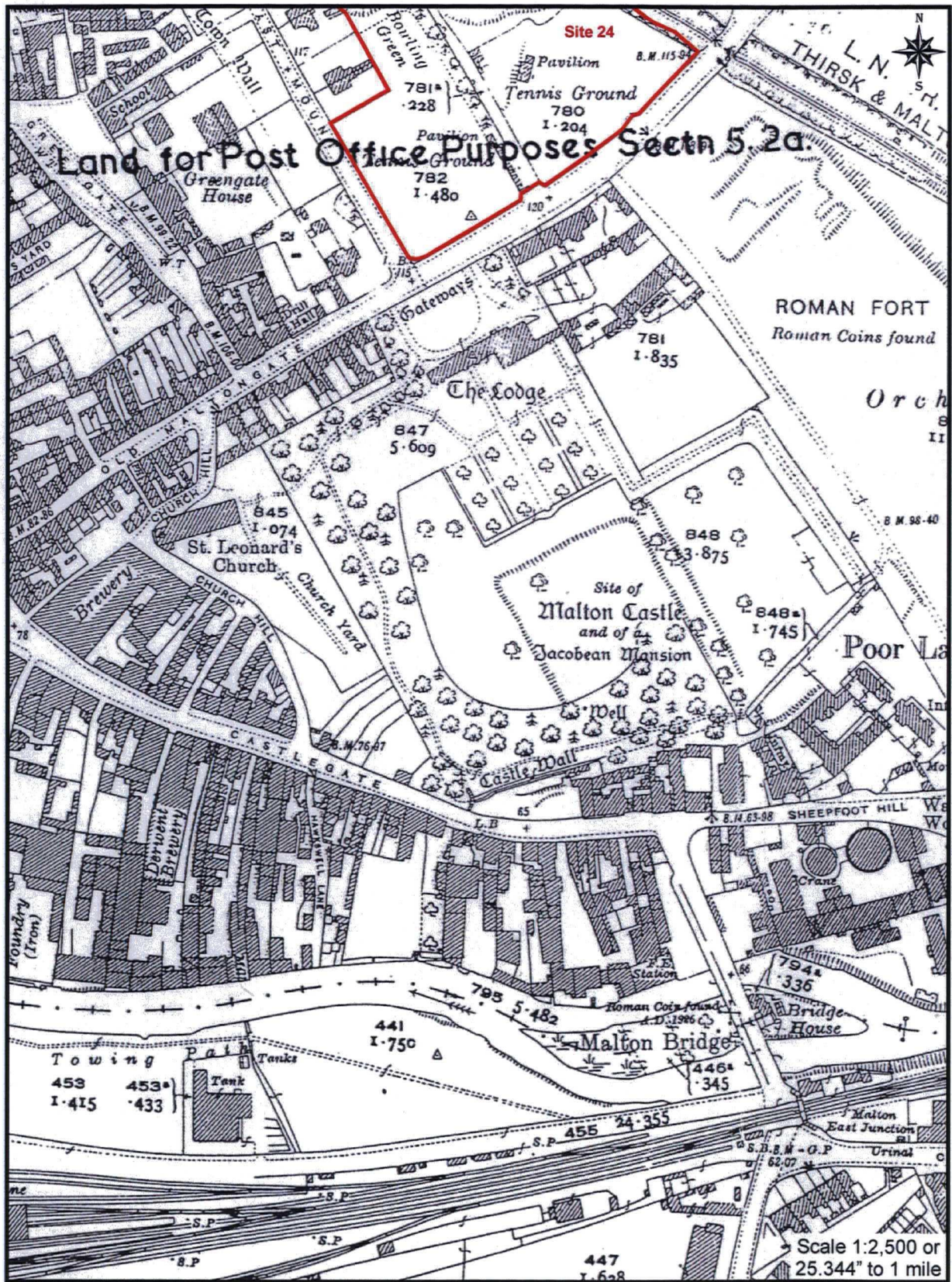


Figure 38. Extract from the 1924 Edition Ordnance Survey Map: Site 24

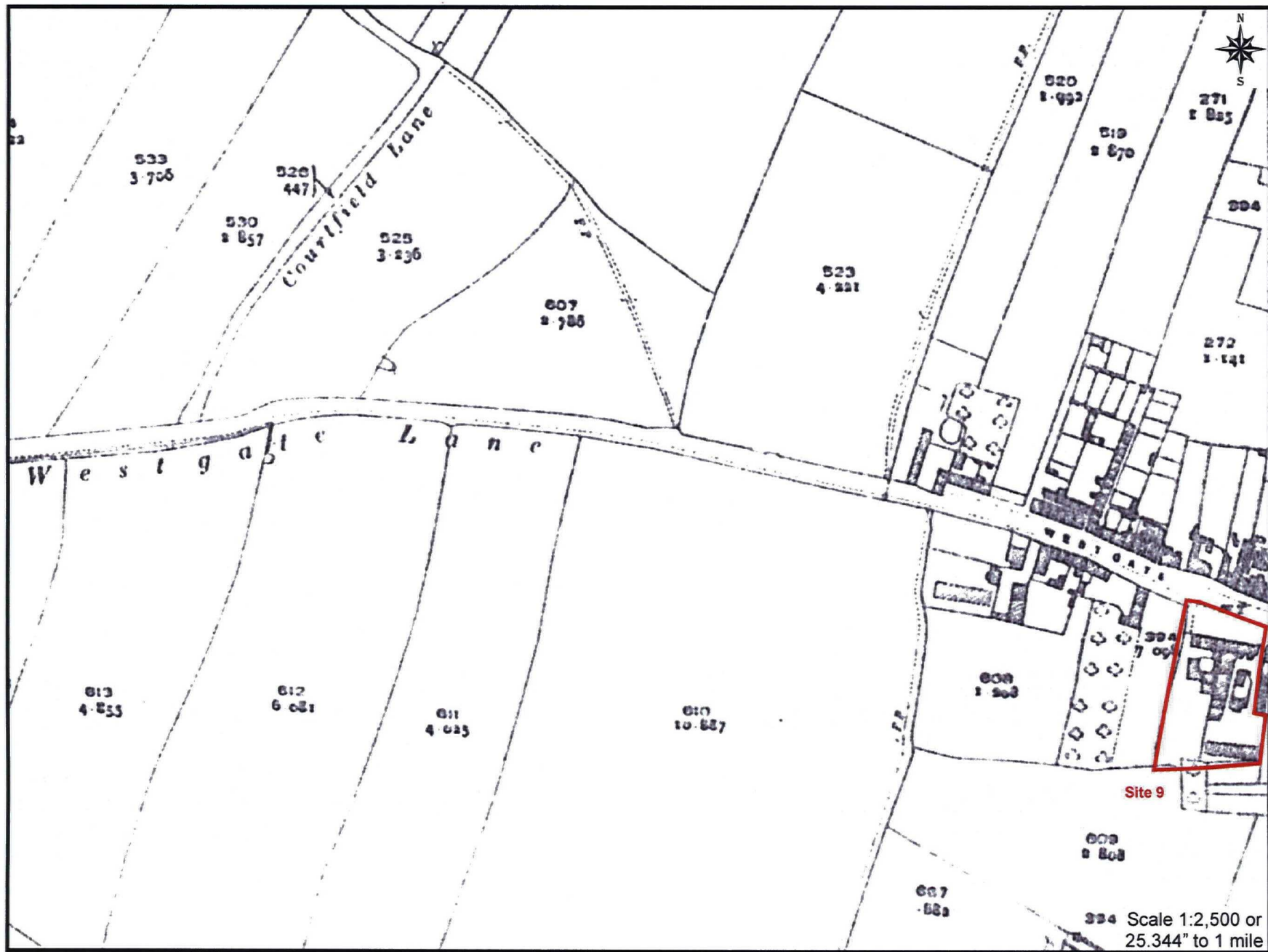


Figure 39. Extract from the 1928 Edition Ordnance Survey Map<sup>75</sup>Site 9

MAP 04-07-07

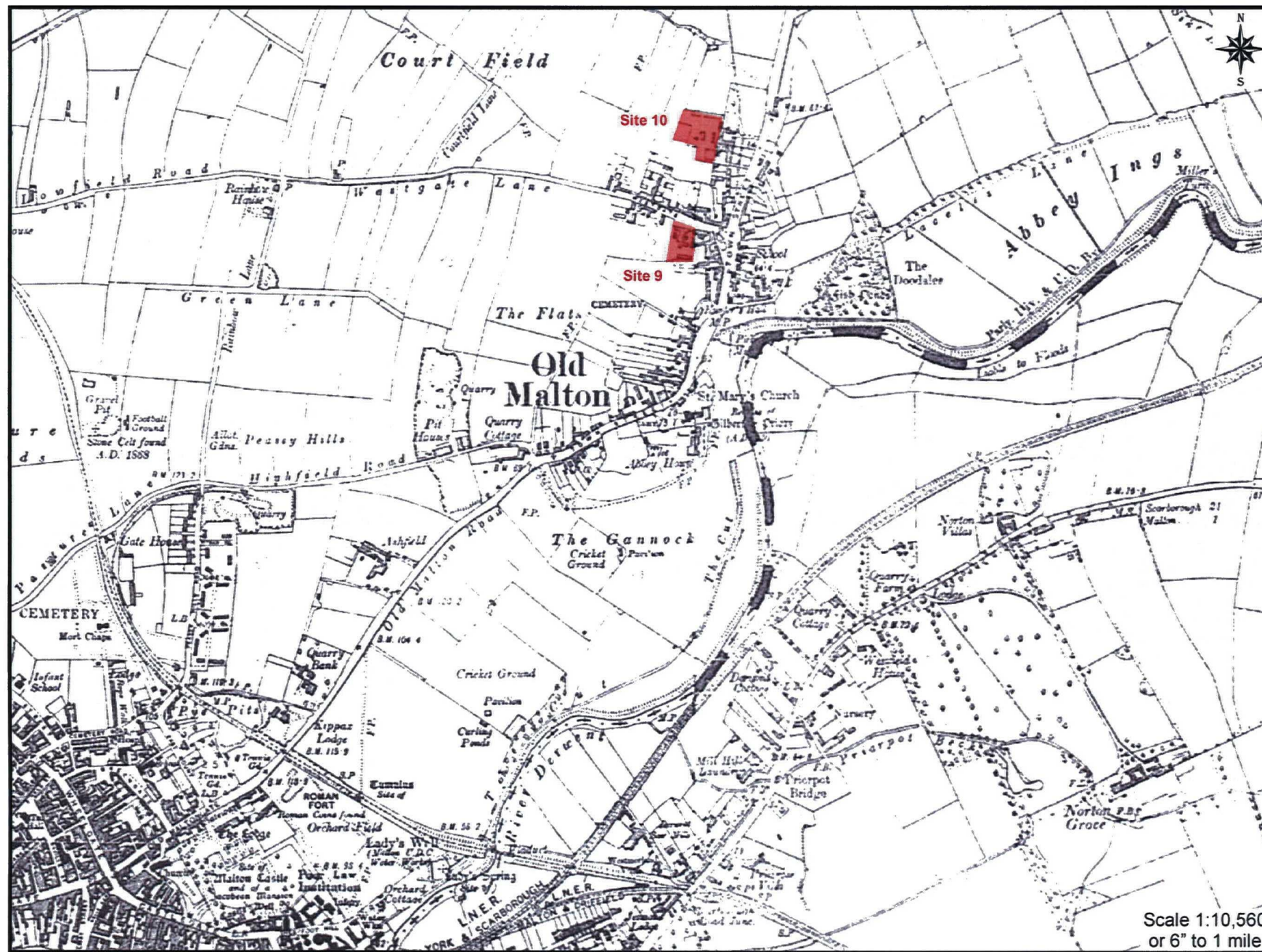


Figure 40. Extract from the 1929 Edition Ordnance Survey Map<sup>76</sup>Sites 9 and 10

Scale 1:10,560  
or 6" to 1 mile

MAP 04-07-07