

Figure 41. Extract from the 1929 Edition Ordnance Survey Map 7 Site 14

MAP 04-07-07



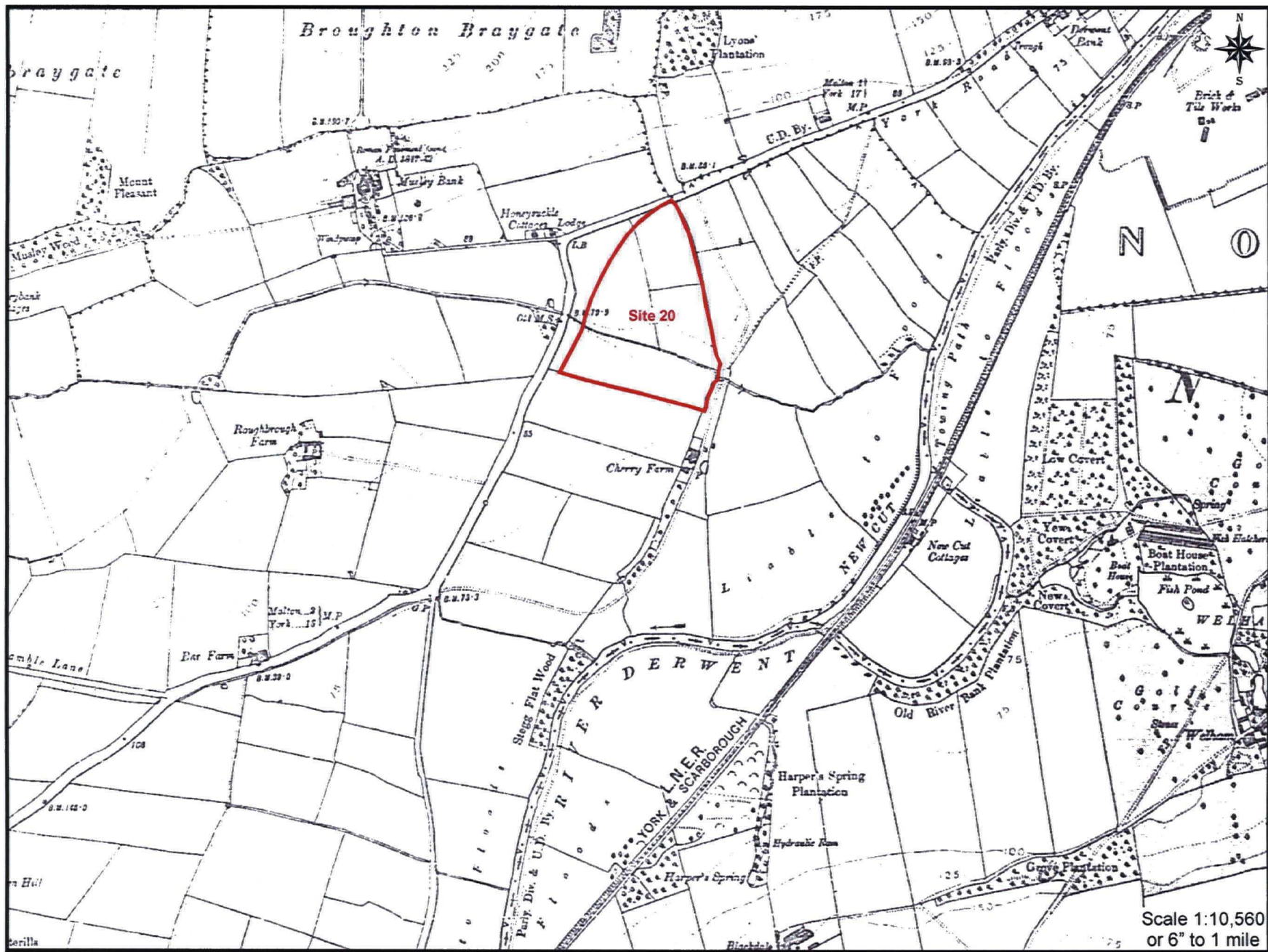


Figure 42. Extract from the 1929 Edition Ordnance Survey Map<sup>78</sup> Site 20



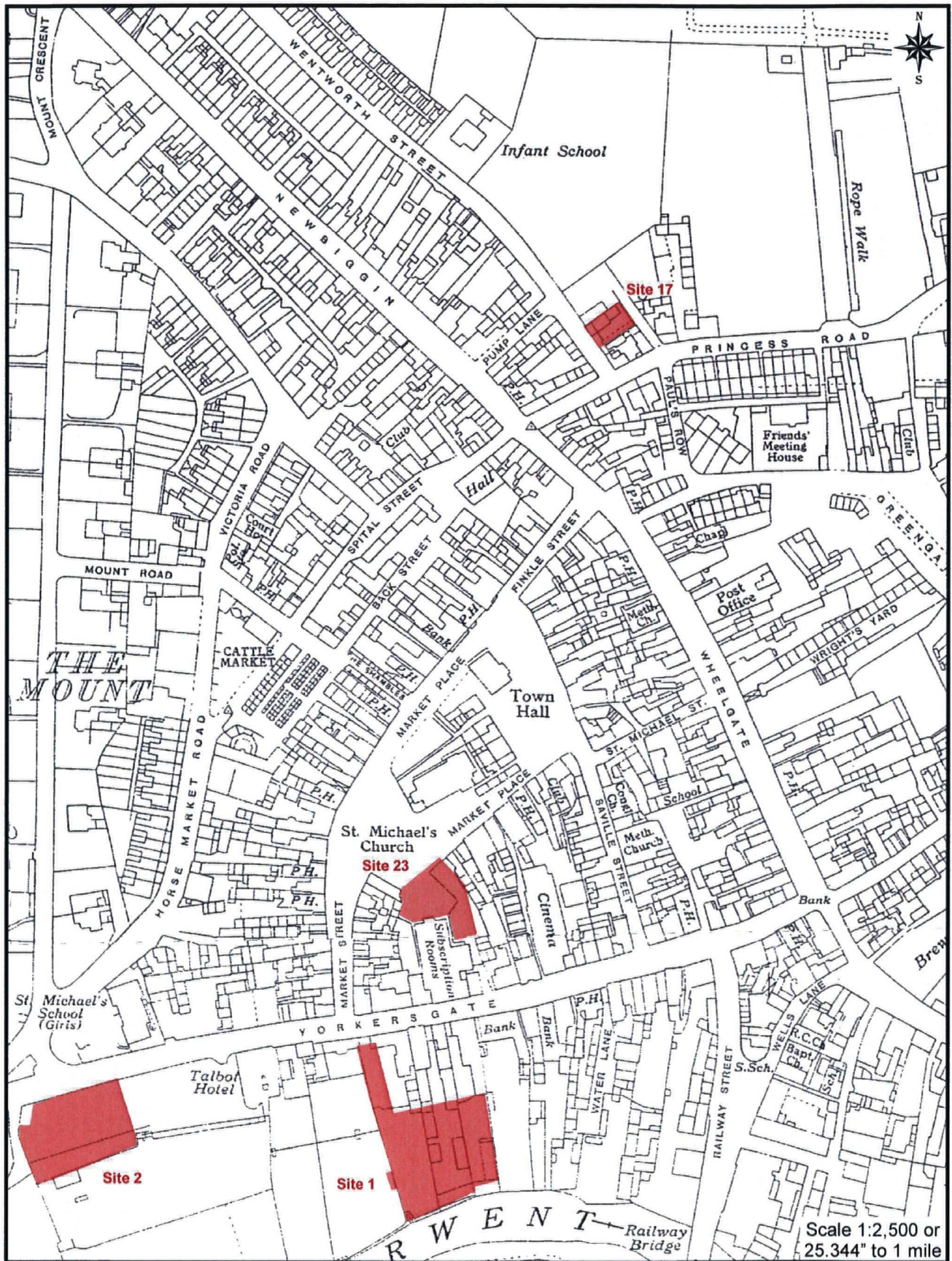


Figure 43. Extract from the 1938 Edition Ordnance Survey Map: Sites 1, 2, 17 and 23



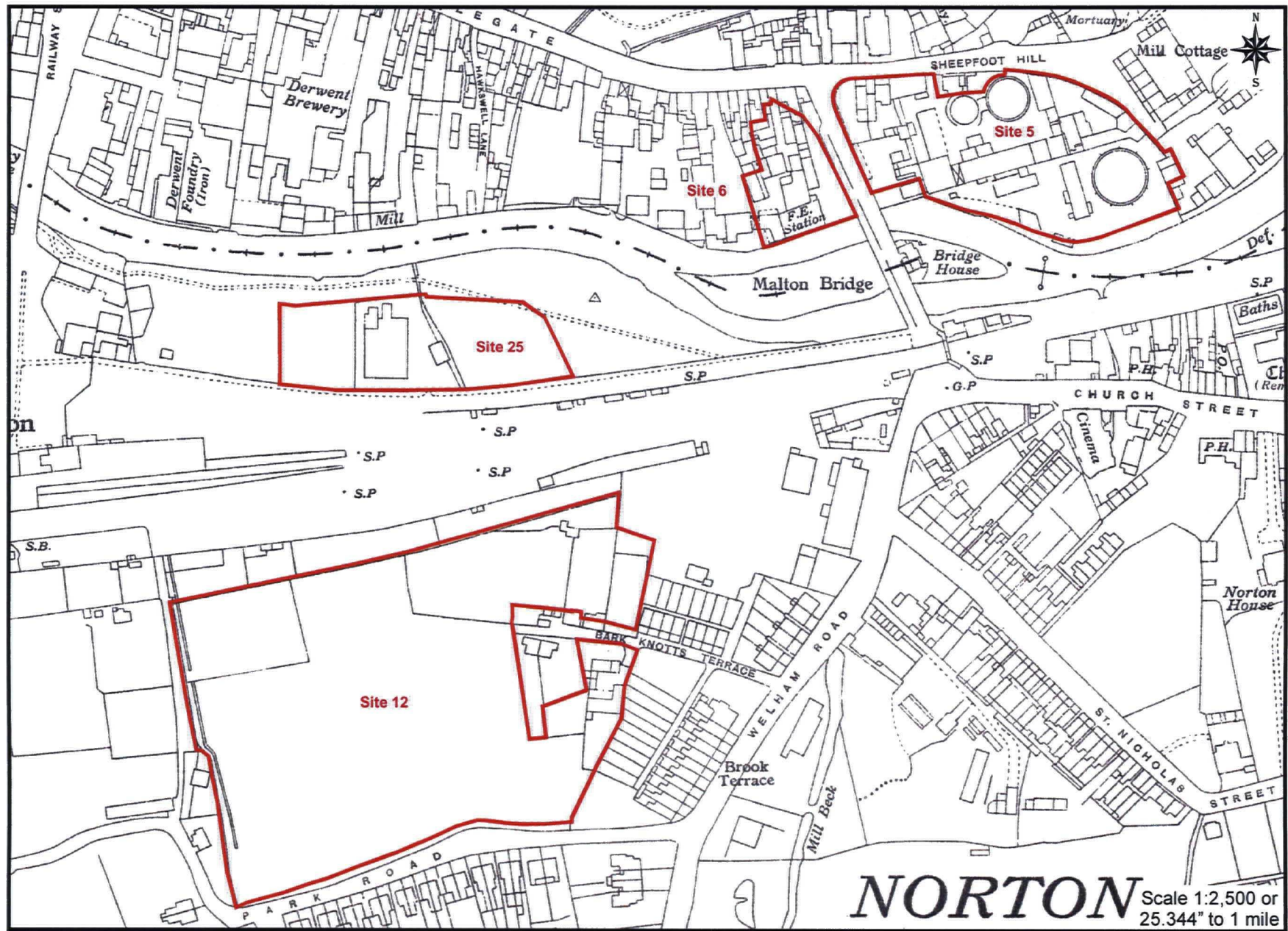


Figure 44. Extract from the 1938 Edition Ordnance Survey Map: Sites 5, 6, 12 and 25





Figure 45. Extract from the 1938 Edition Ordnance Survey Map<sup>81</sup>Sites 9 and 10

MAP 04-07-07



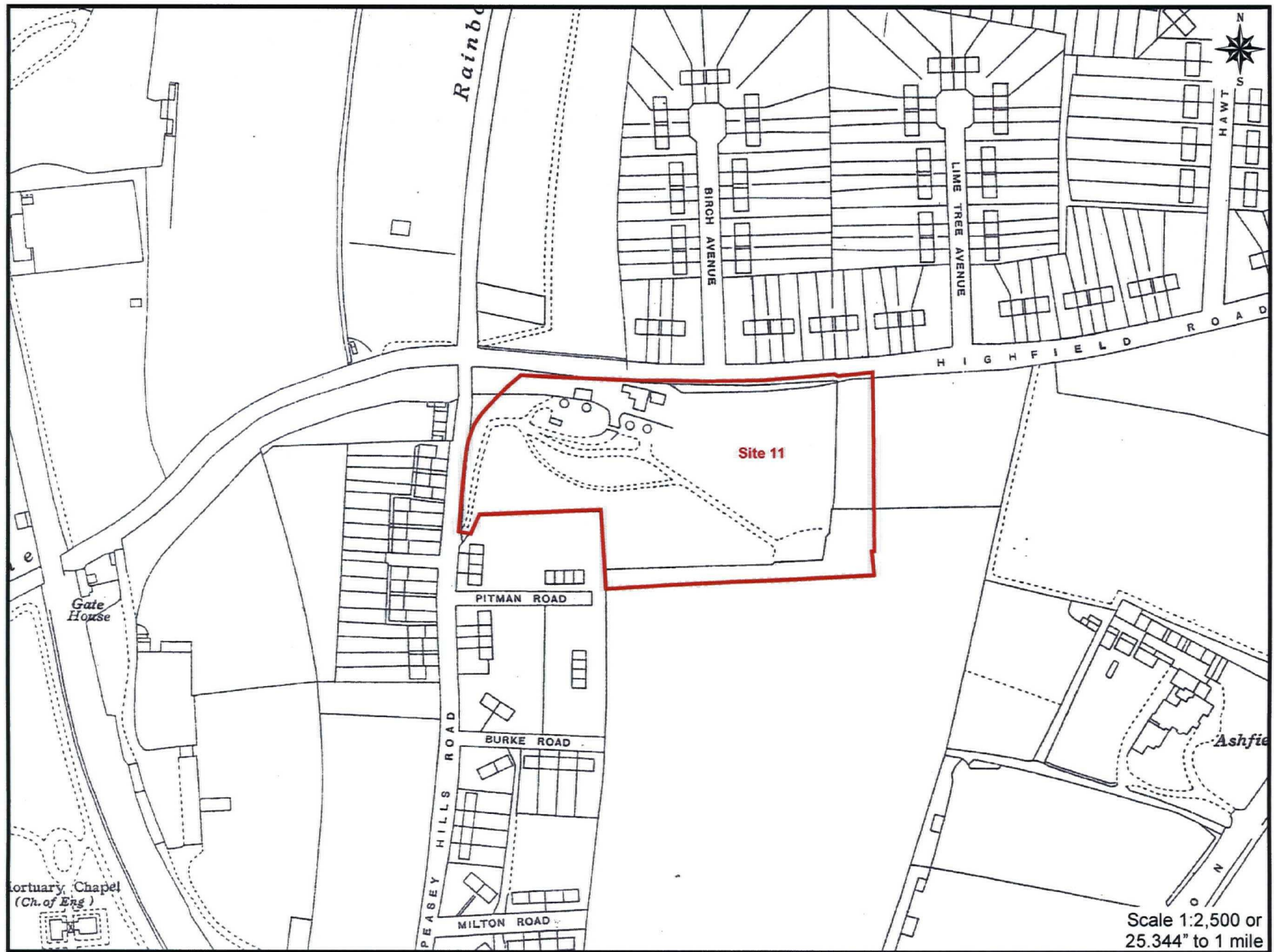


Figure 46. Extract from the 1938 Edition Ordnance Survey Map<sup>2</sup> Site 11

MAP 04-07-07



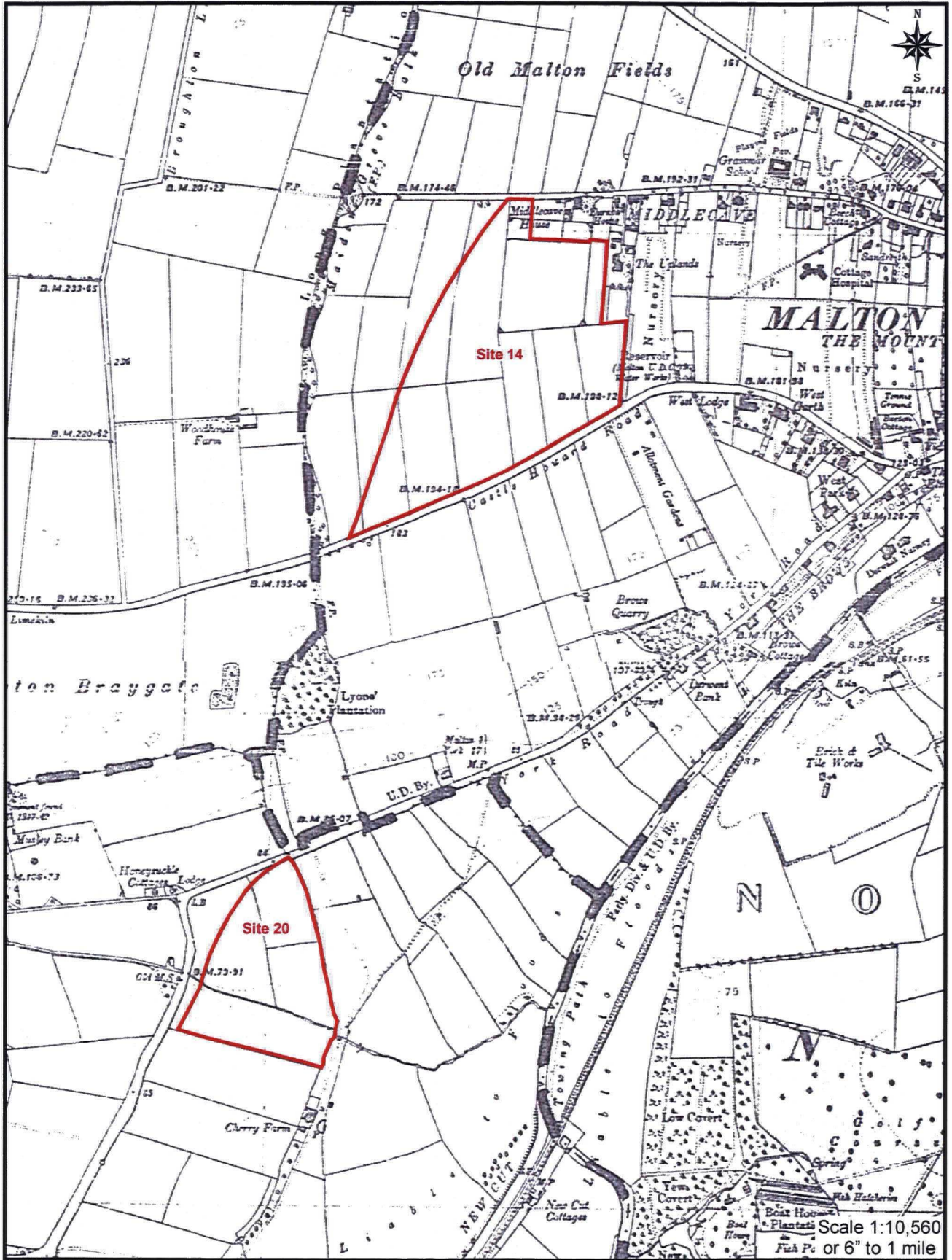


Figure 47. Extract from the 1938 Edition Ordnance Survey Map: Sites 14 and 20



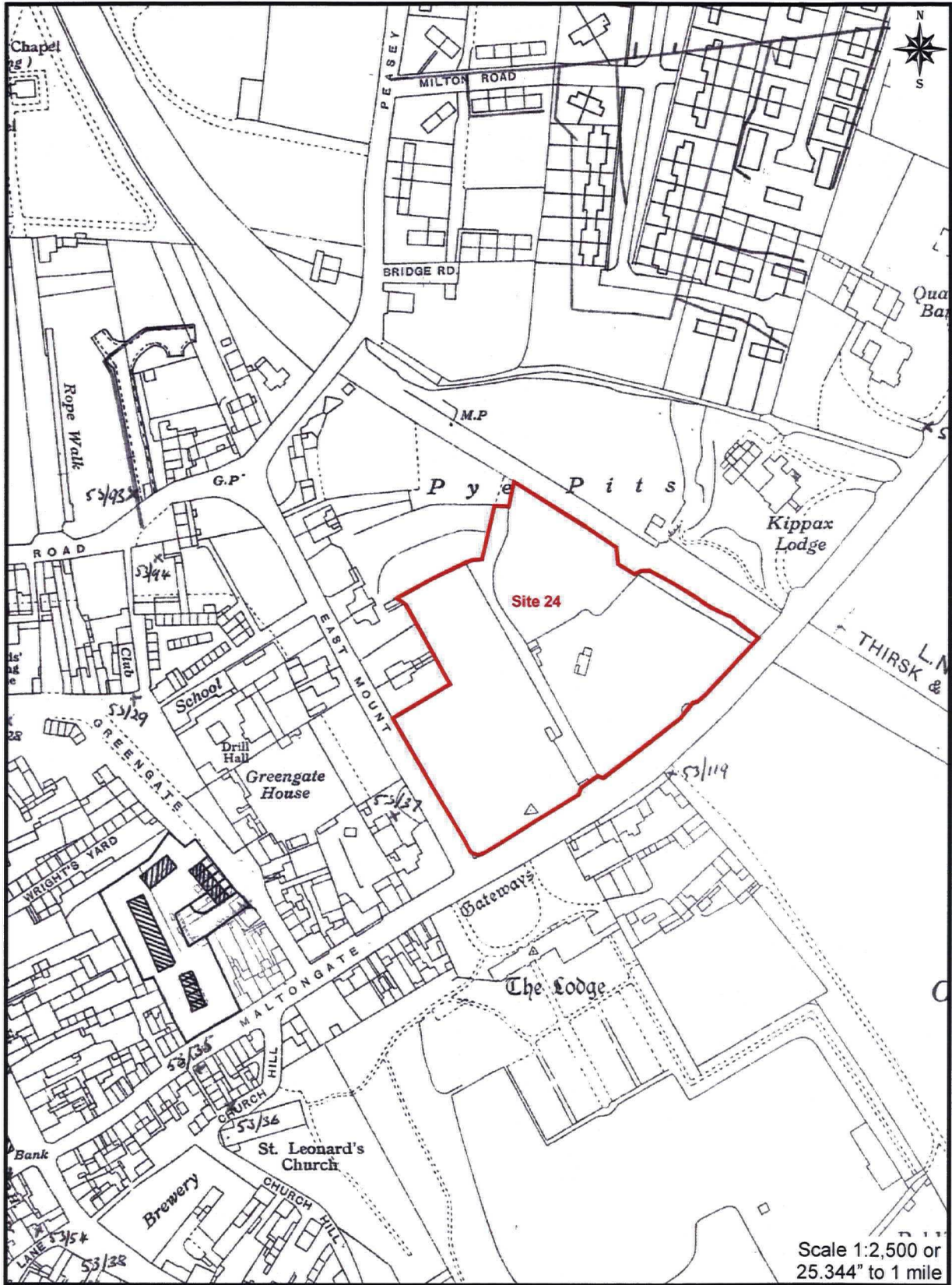


Figure 48. Extract from the 1938 Edition Ordnance Survey Map: Site 24



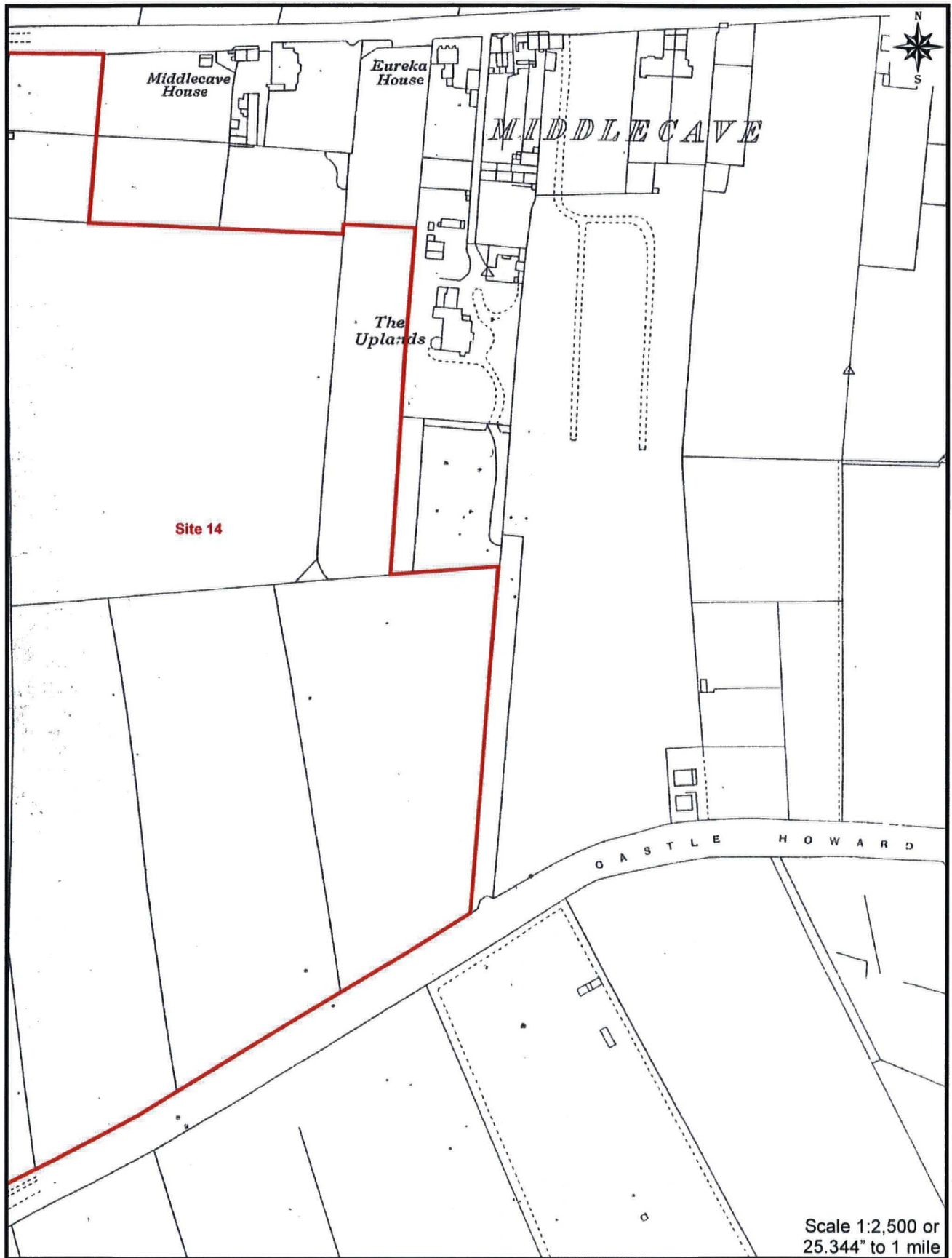


Figure 49. Extract from the 1938 Edition Ordnance Survey Map: Site 14



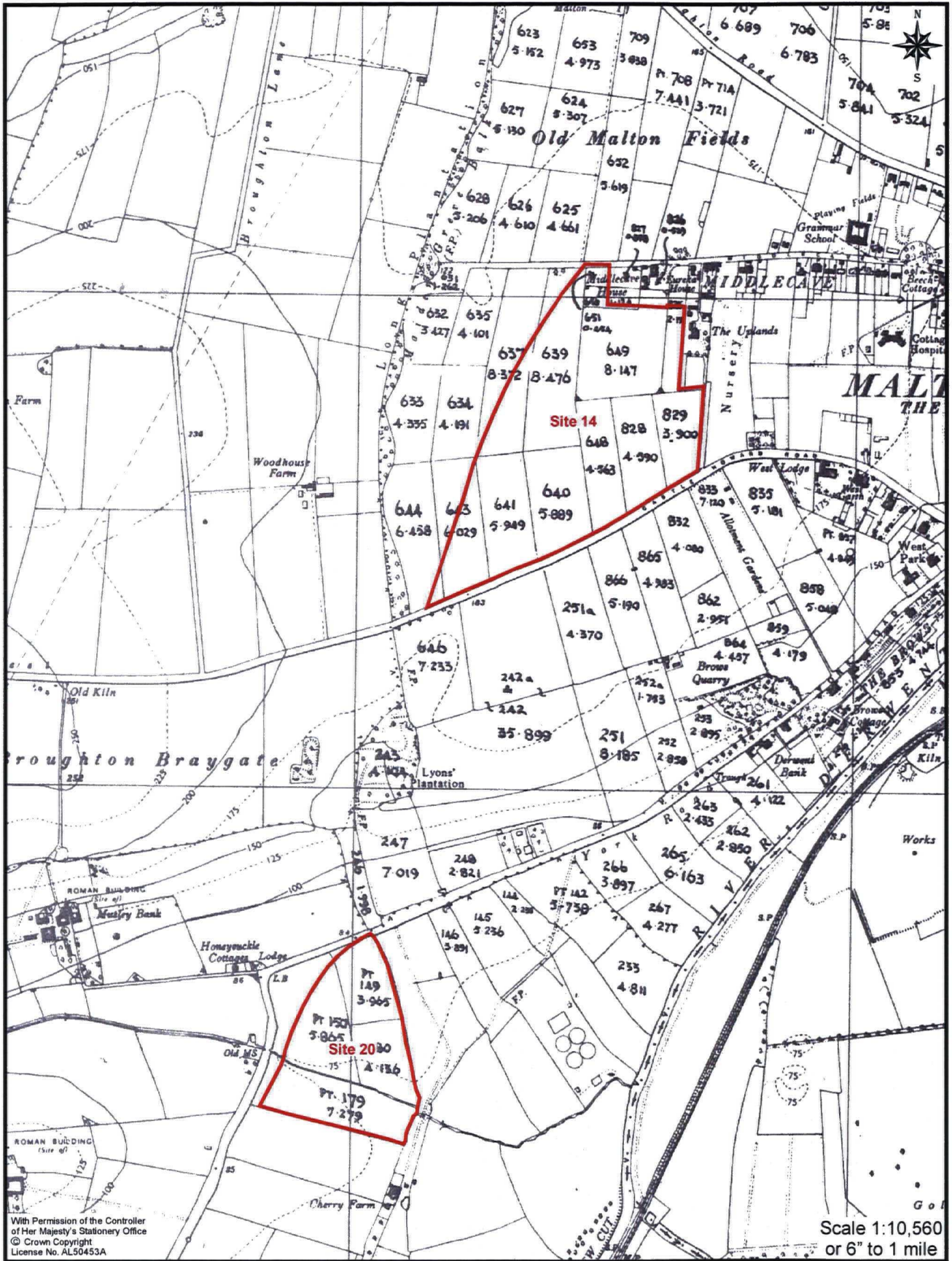


Figure 50. Extract from the 1958 Edition Ordnance Survey Map: Sites 14 and 20





Figure 51. Extract from the 1958 Edition Ordnance Survey Map: Sites 24 and 25



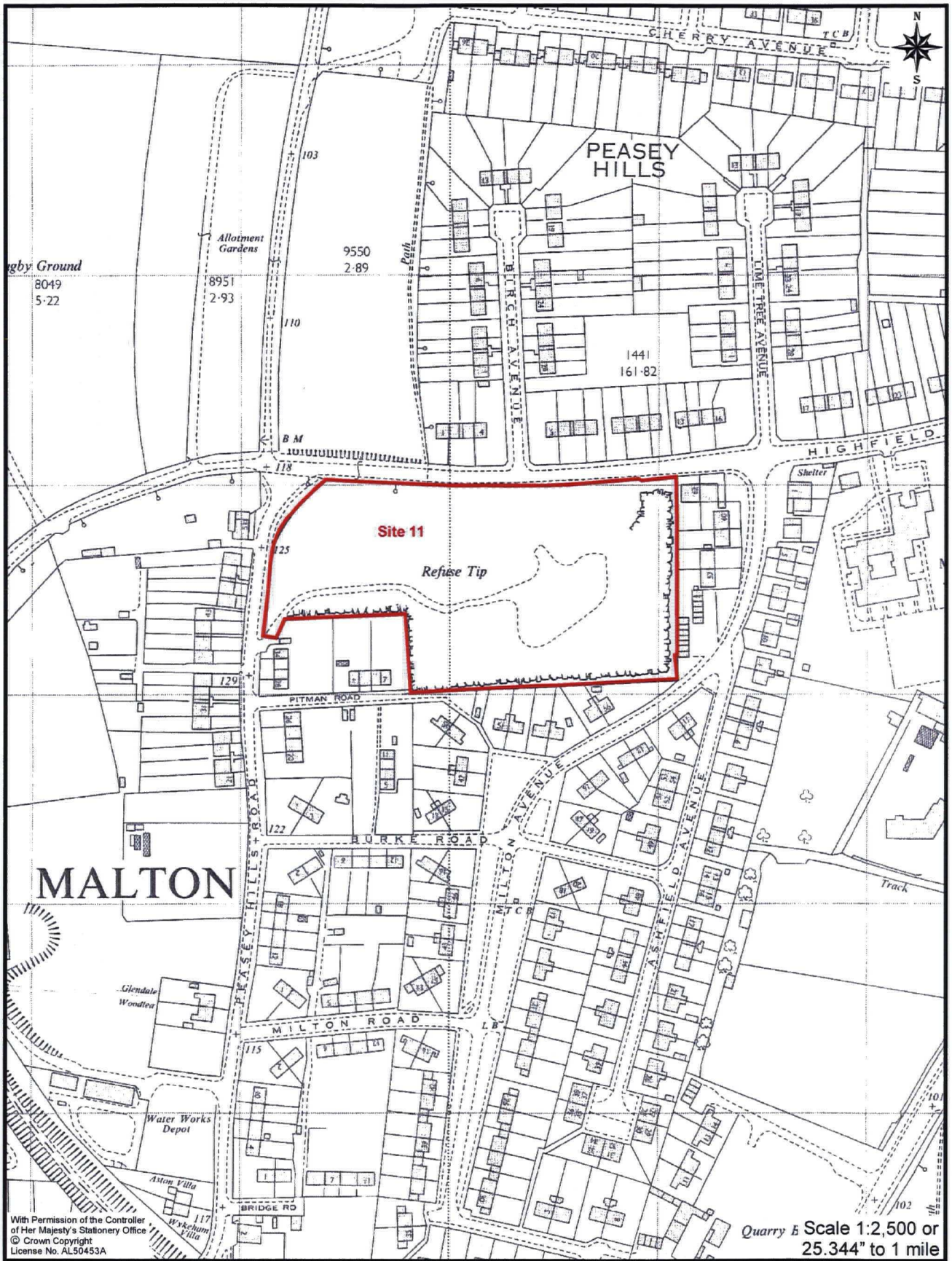


Figure 52. Extract from the 1969 Edition Ordnance Survey Map: Site 11



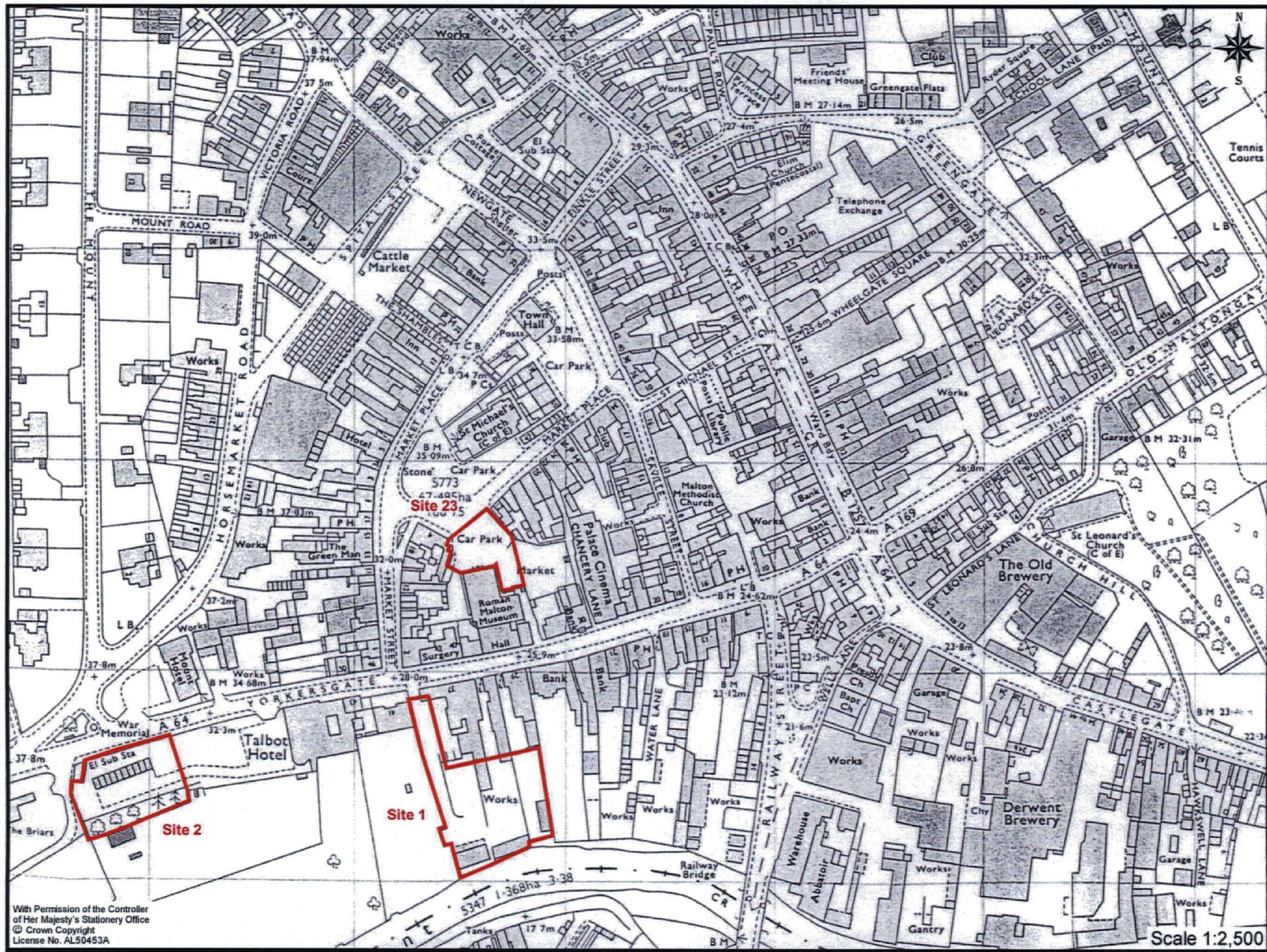


Figure 53. Extract from the 1970 Edition Ordnance Survey Map<sup>89</sup> Sites 1, 2 and 23

MAP 04-07-07



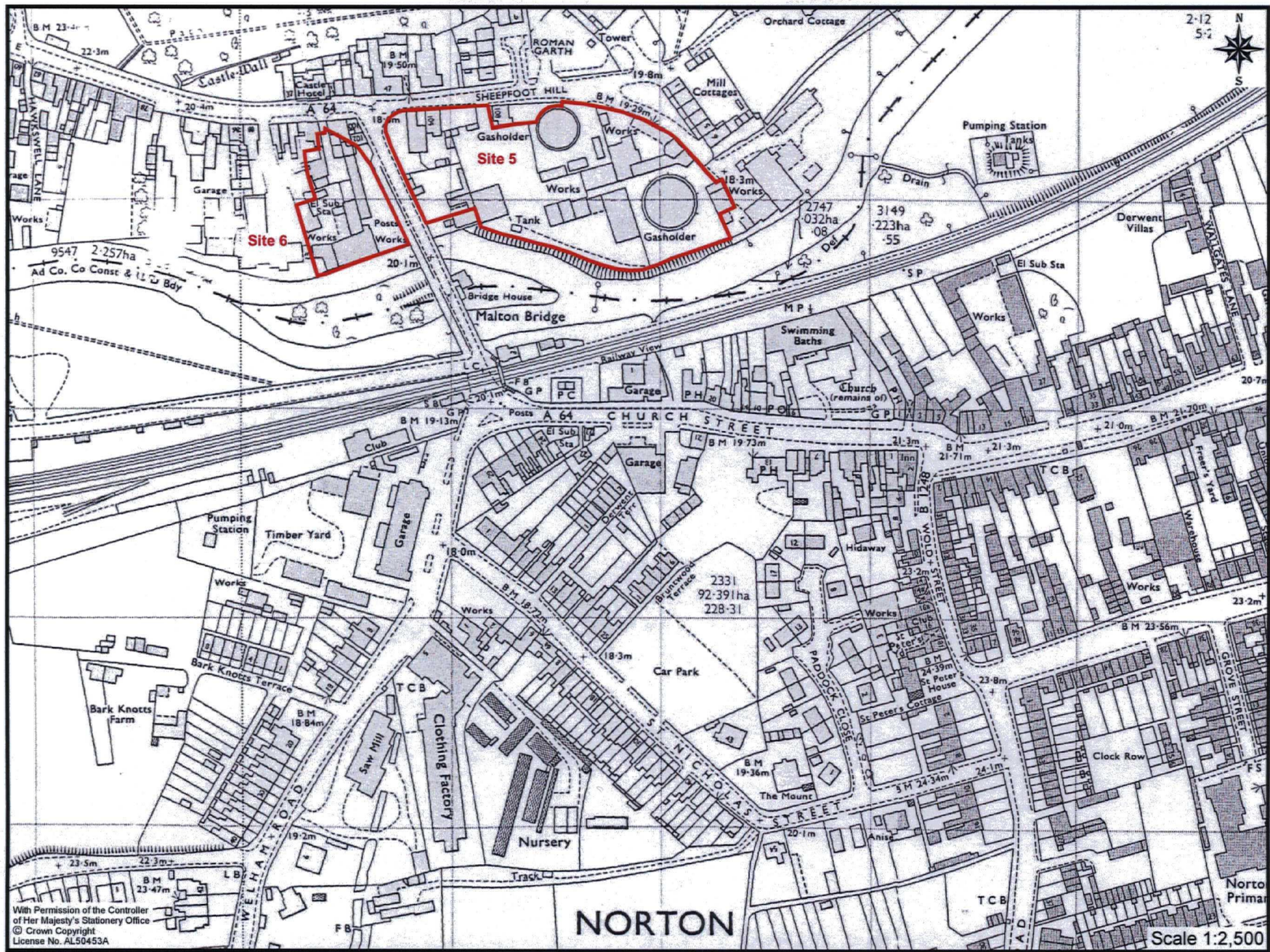


Figure 54. Extract from the 1970 Edition Ordnance Survey Map<sup>90</sup>Sites 5 and 6

MAP 04-07-07



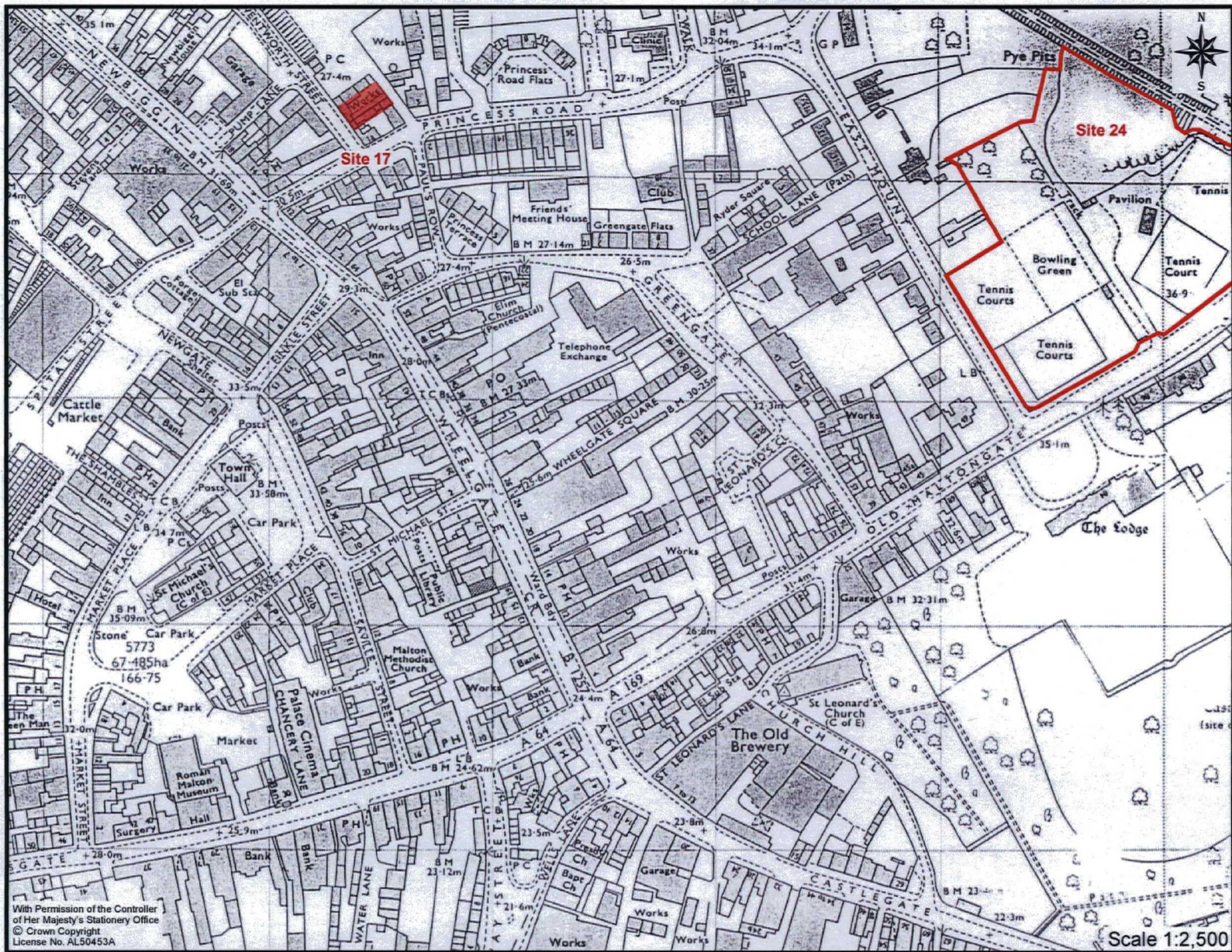


Figure 55. Extract from the 1970 Edition Ordnance Survey Map: Sites 17 and 24



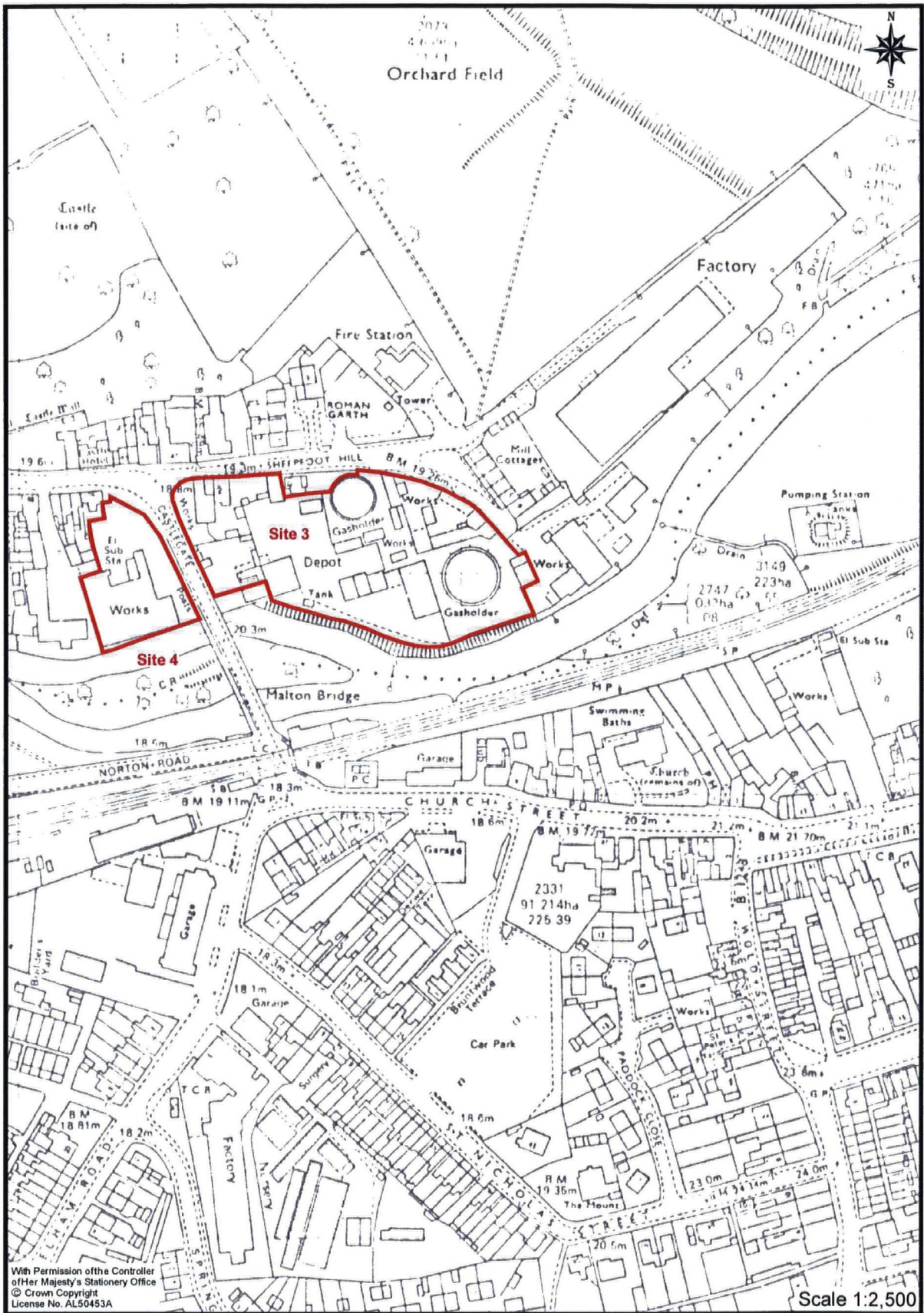


Figure 56. Extract from the 1983 Edition Ordnance Survey Map: Sites 3 and 4



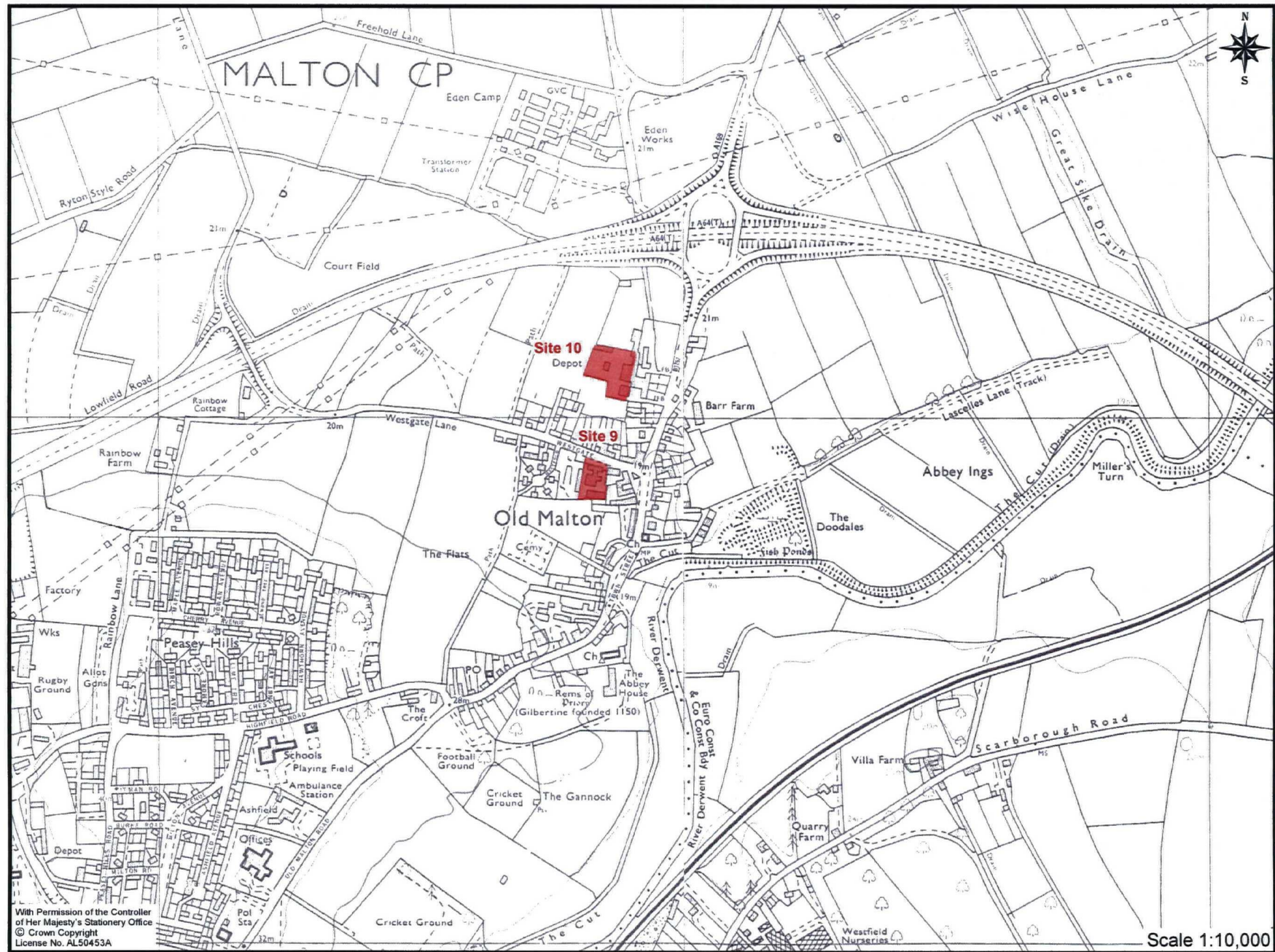


Figure 57. Extract from the 1983 Edition Ordnance Survey Map<sup>93</sup> Sites 9 and 10



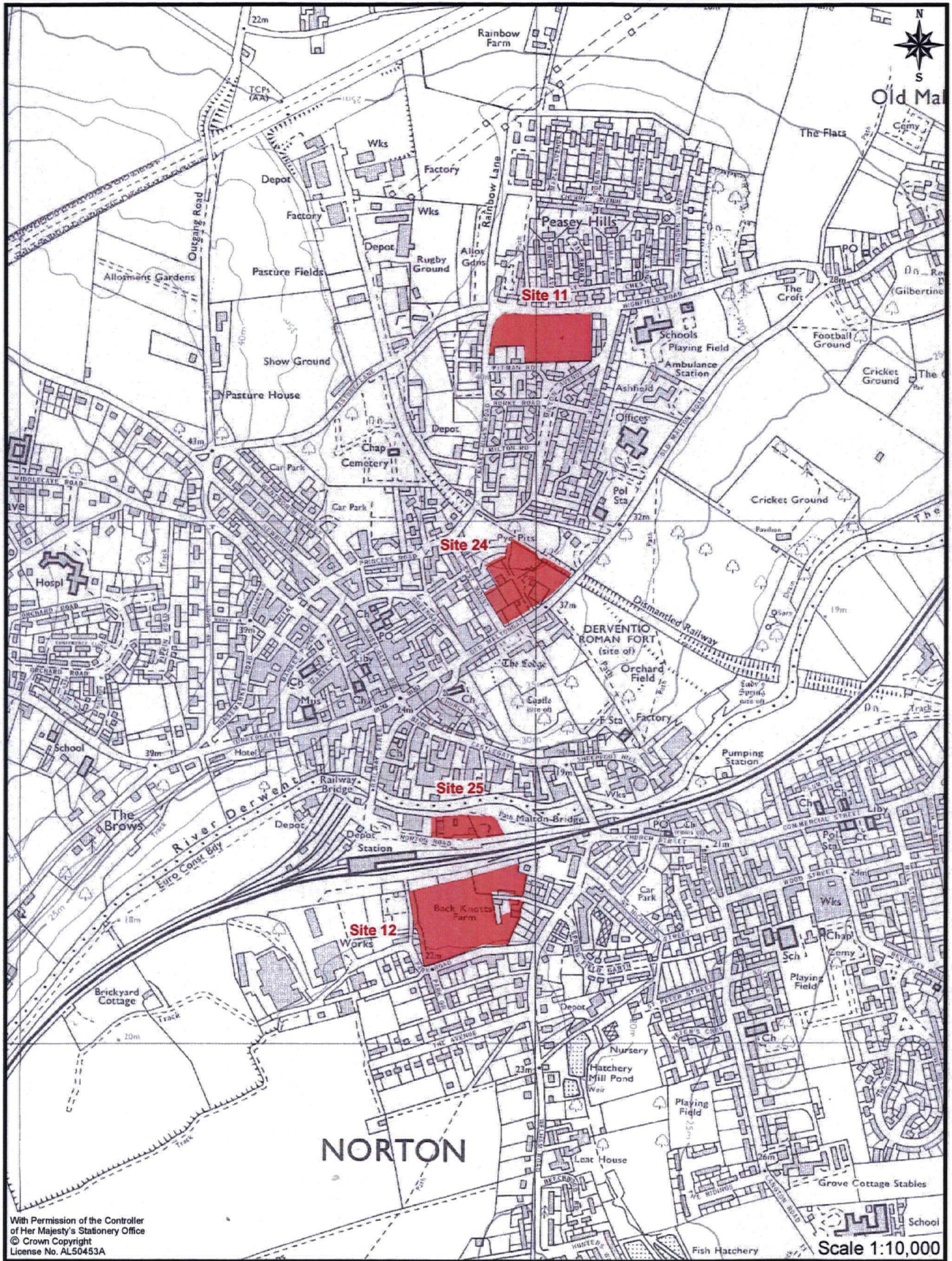


Figure 58. Extract from the 1983 Edition Ordnance Survey Map: Sites 11, 12, 24 and 25



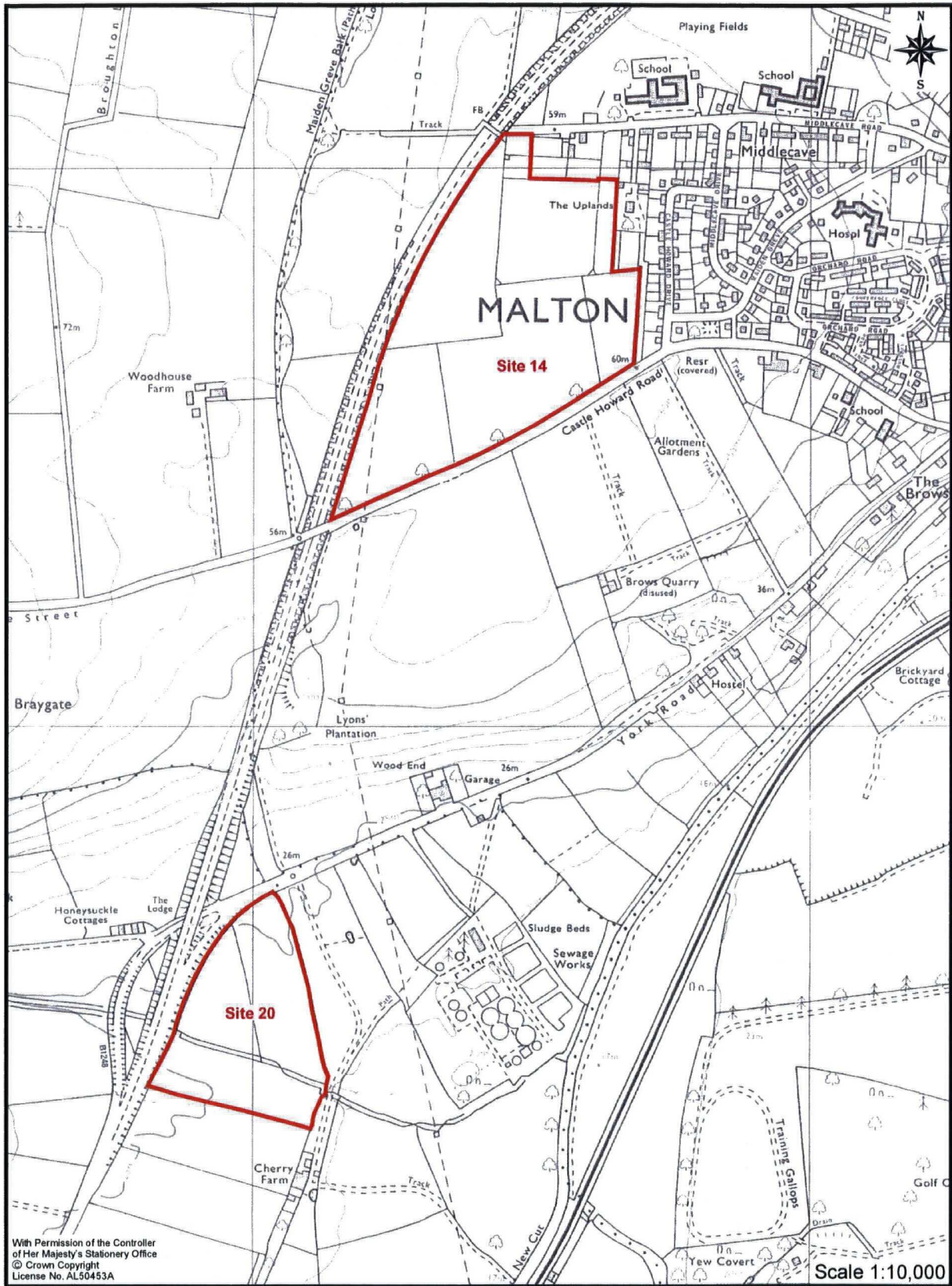


Figure 59. Extract from the 1983 Edition Ordnance Survey Map: Sites 14 and 20



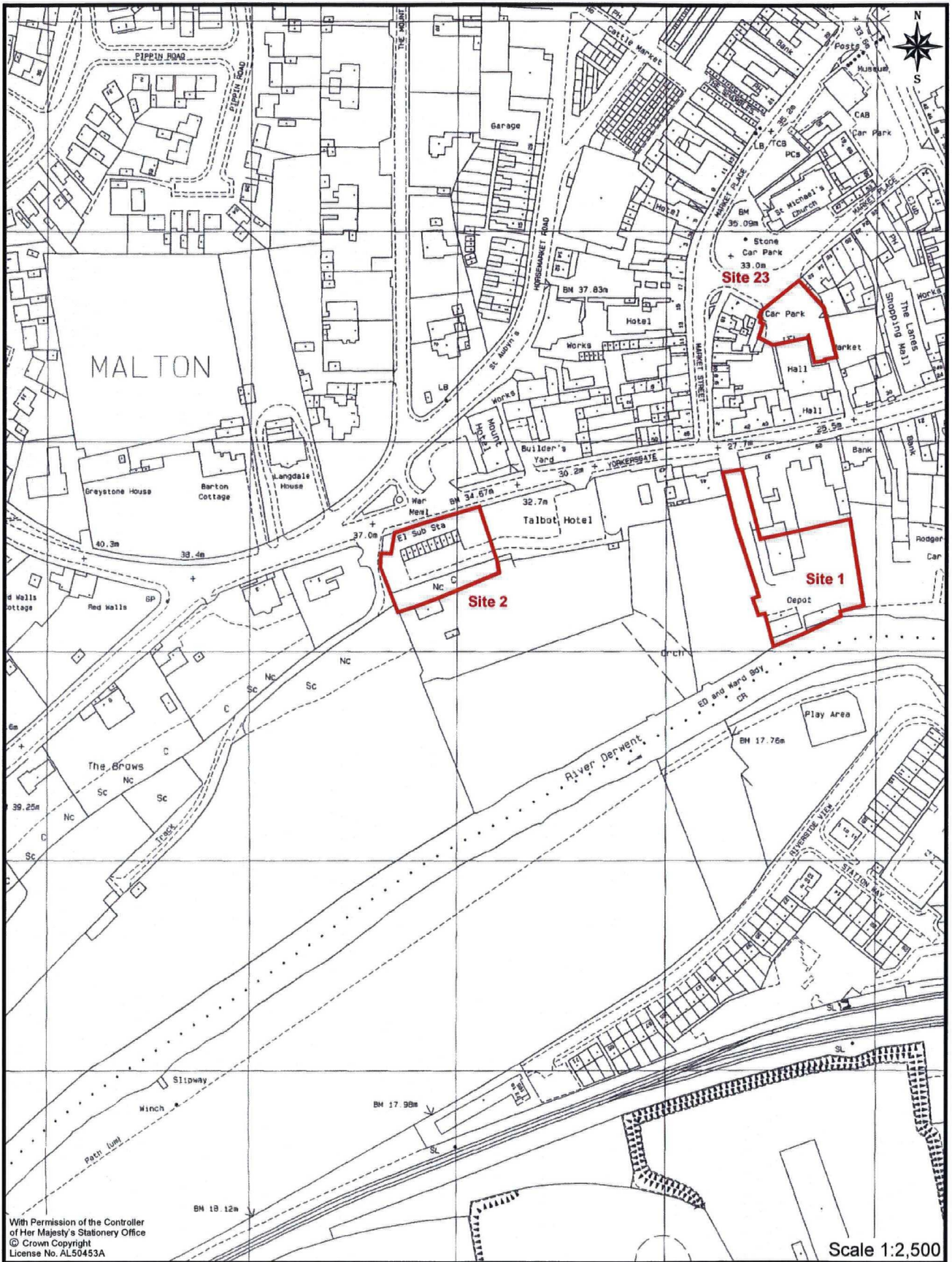


Figure 60. Extract from the 1999 Edition Ordnance Survey Map: Sites 1, 2 and 23