

Fig. 1. Site location

Reproduced with the permission of the controller of Her Majesty's Stationery Office © Crown Copyright. Archaeological Services WYAS: licence LA076406, 2007.

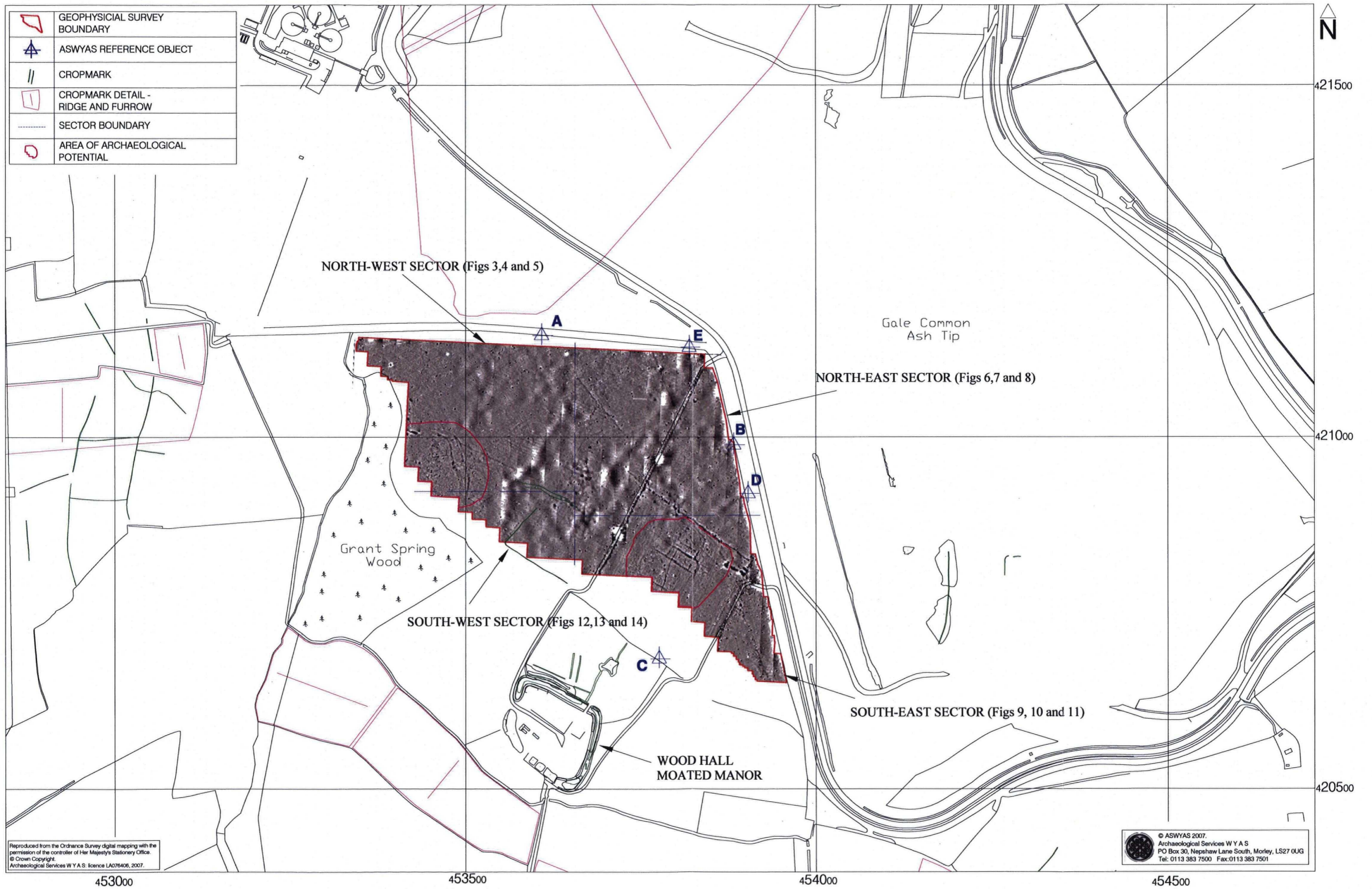


Fig. 2. Site location showing greyscale magnetometer data and cropmark detail (1:5000 @ A3)

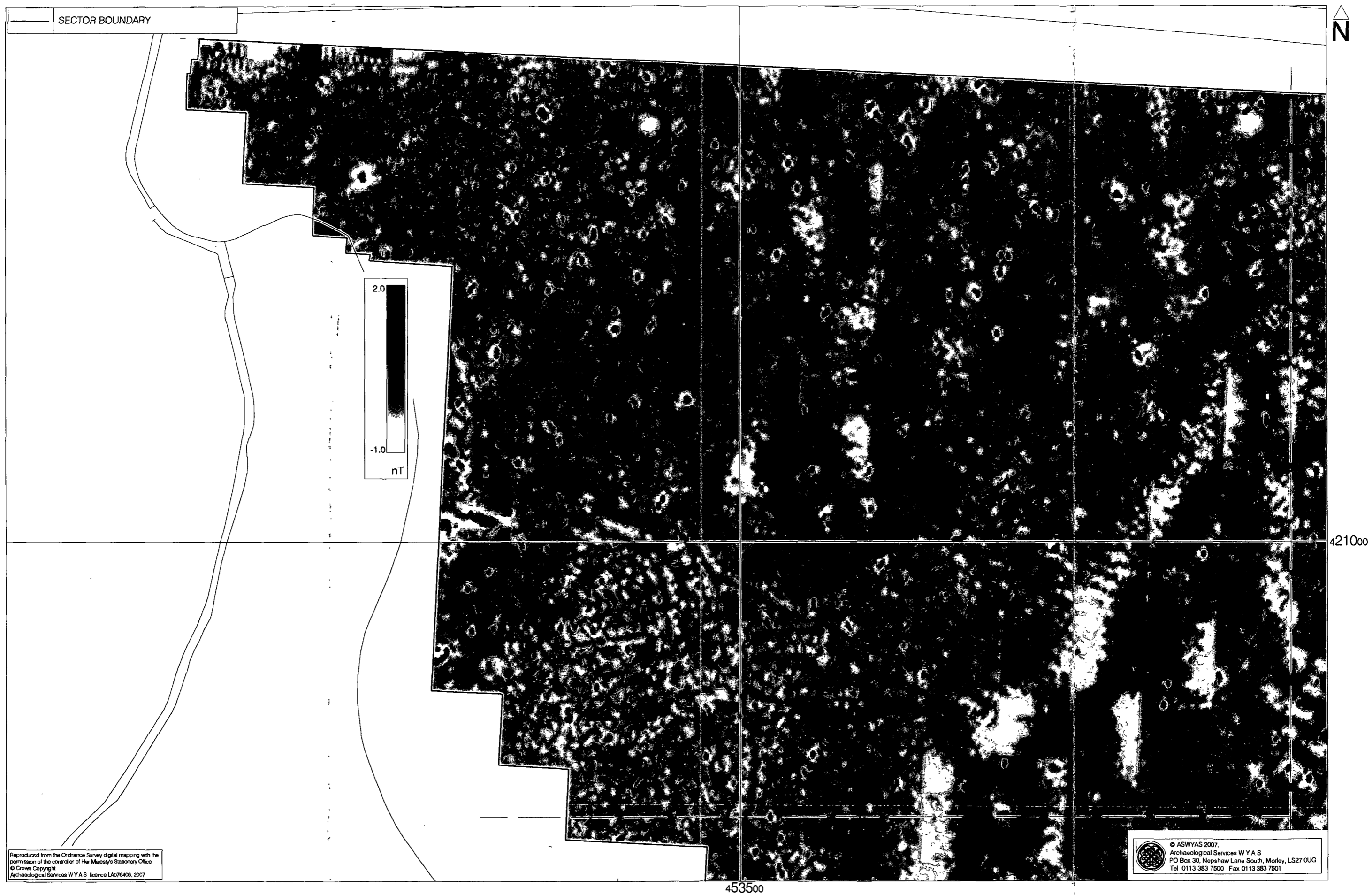


Fig. 3. Processed greyscale magnetometer data; north-west sector (1:1000 @ A3)

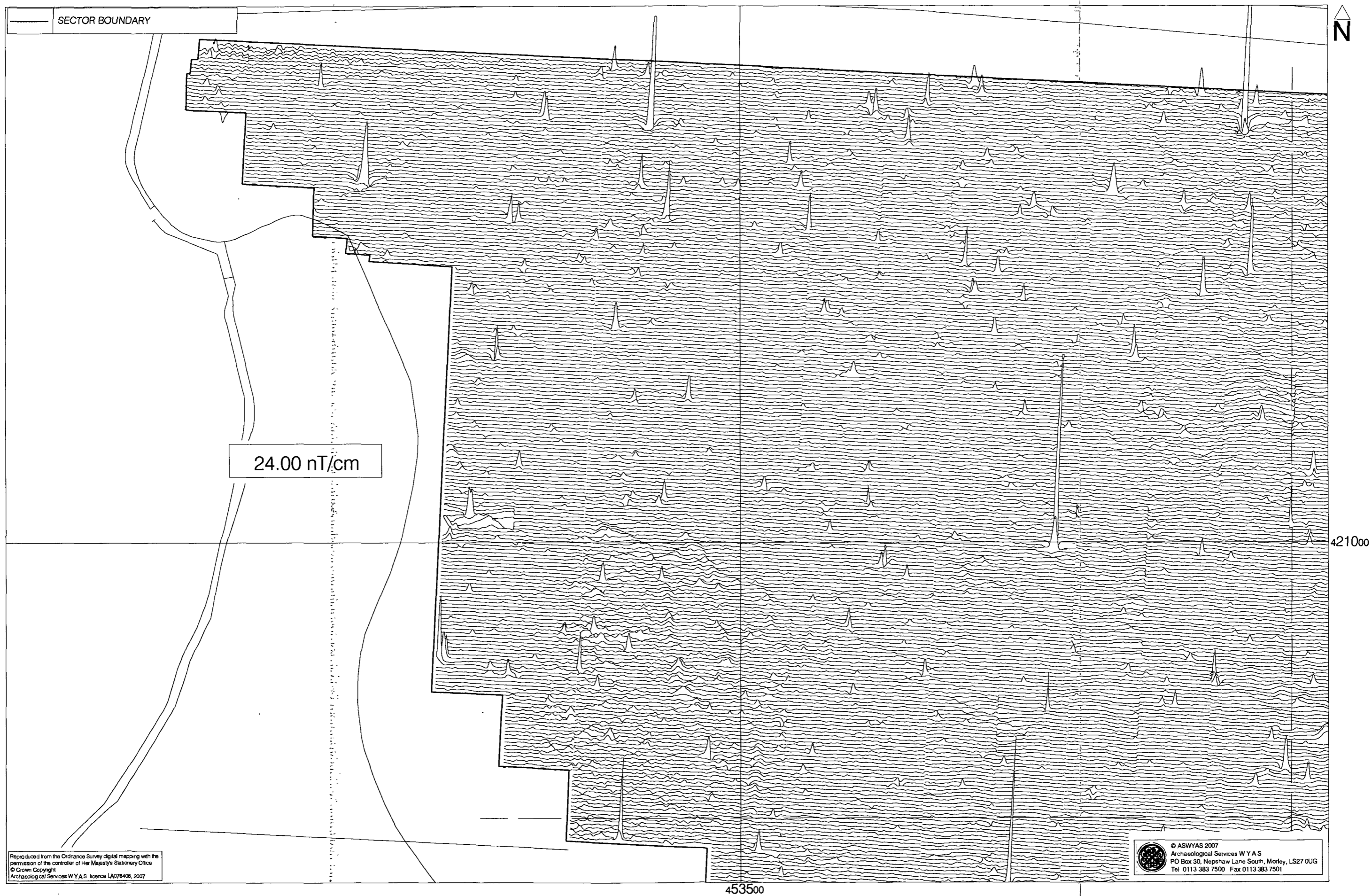
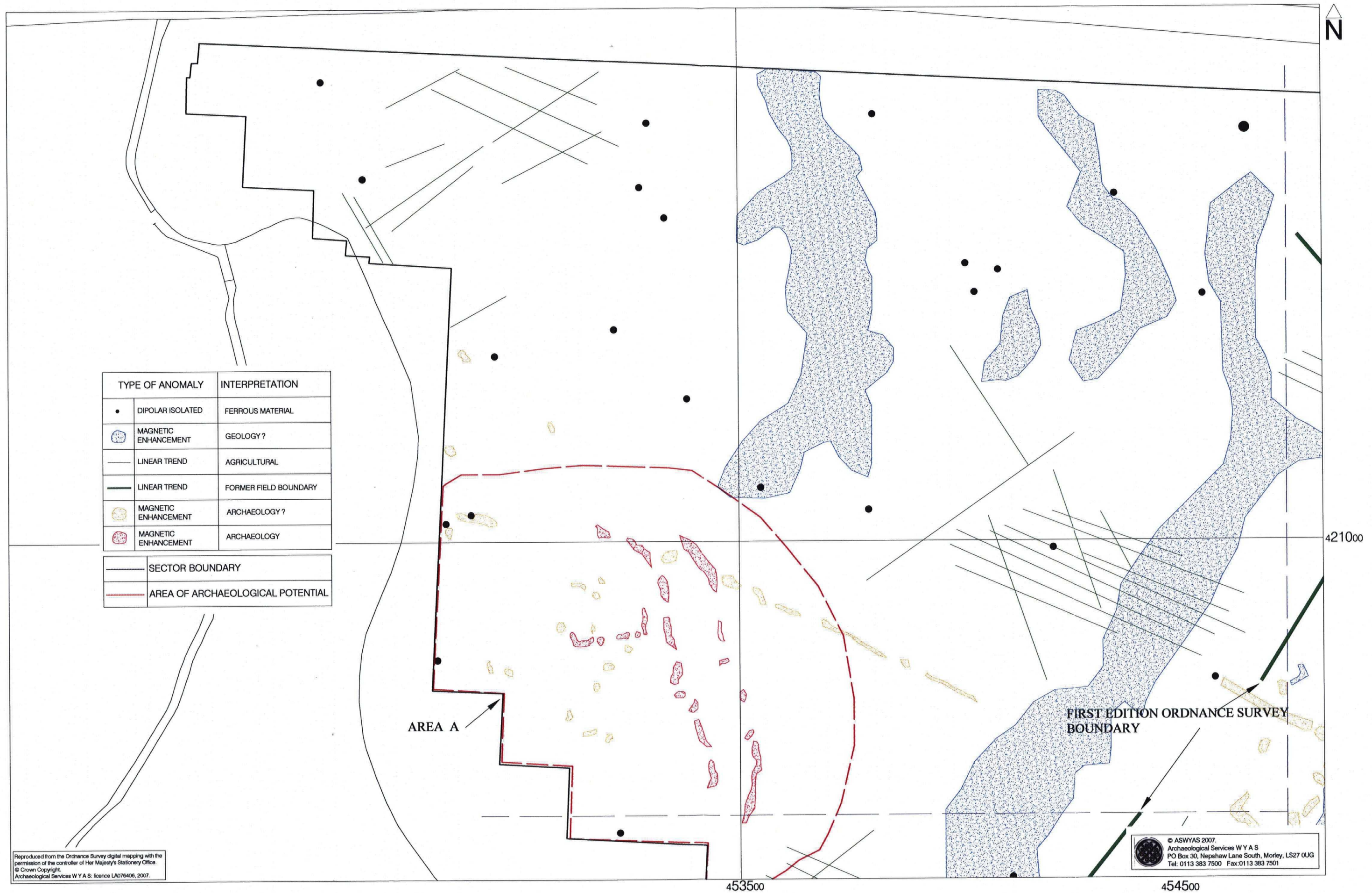


Fig. 4. XY trace plot of unprocessed magnetometer data; north-west sector (1:1000 @ A3)



Reproduced from the Ordnance Survey digital mapping with the permission of the controller of Her Majesty's Stationery Office.
 © Crown Copyright.
 Archaeological Services W Y A S: licence LA076406, 2007.

© ASWYAS 2007.
 Archaeological Services W Y A S
 PO Box 30, Nephaw Lane South, Morley, LS27 0UG
 Tel: 0113 383 7500 Fax: 0113 383 7501

Fig. 5. Interpretation of magnetometer data; north-west sector (1:1000 @ A3)

0 50m

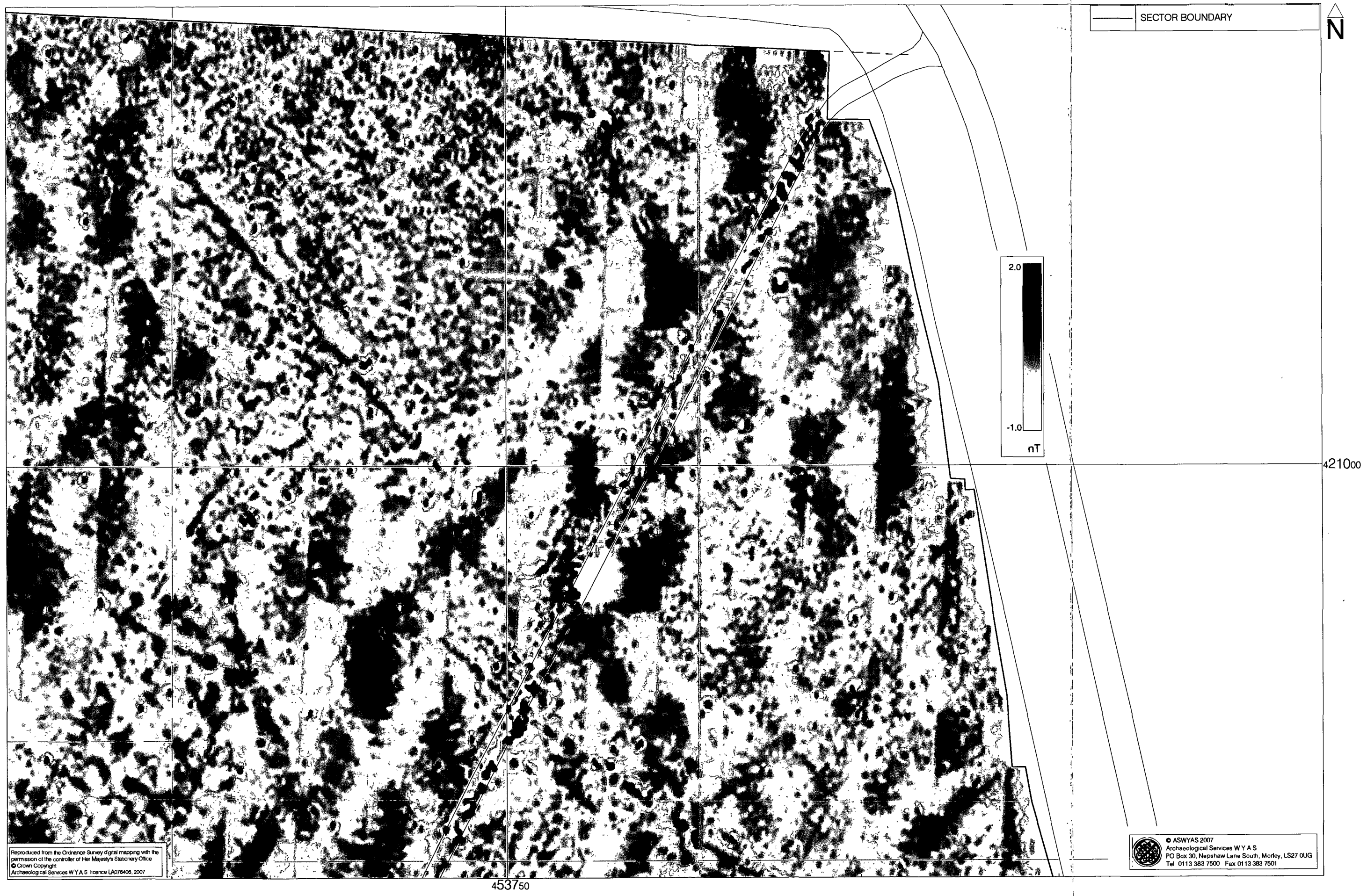


Fig. 6. Processed greyscale magnetometer data; north-east sector (1:1000 @ A3)

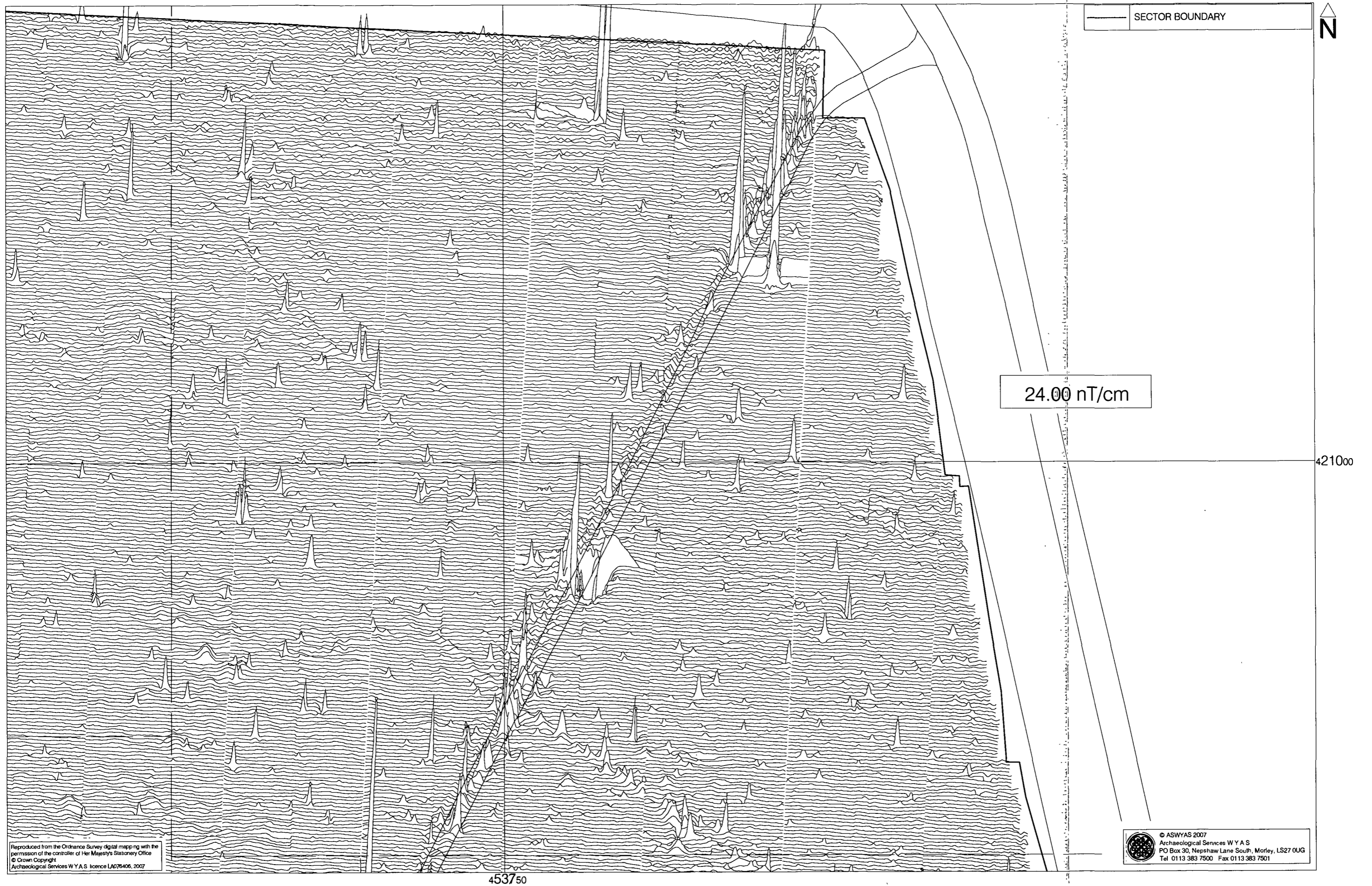
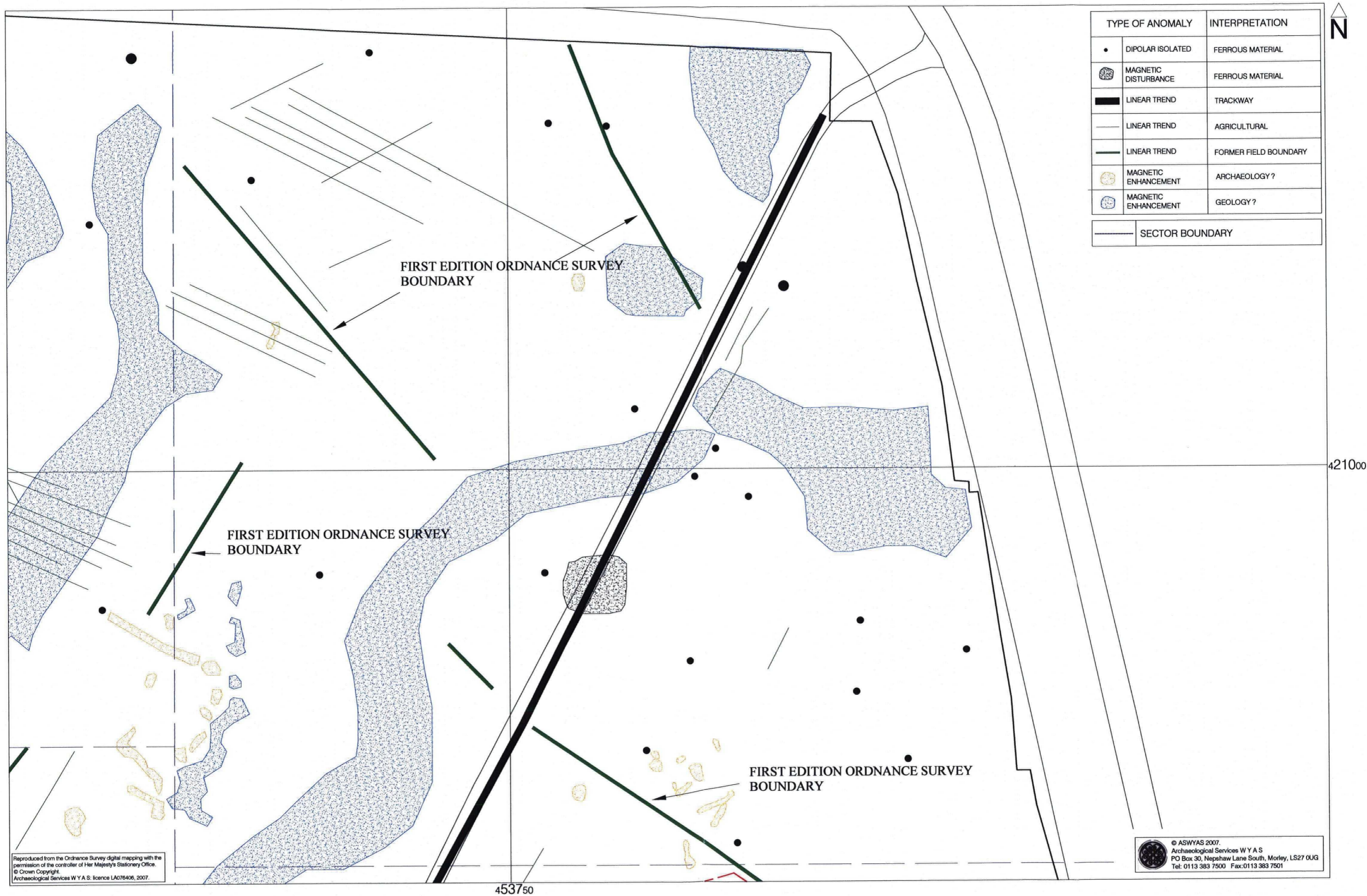


Fig. 7. XY trace plot of unprocessed magnetometer data; north-east sector (1:1000 @ A3)



Reproduced from the Ordnance Survey digital mapping with the permission of the controller of Her Majesty's Stationery Office.
 © Crown Copyright.
 Archaeological Services W Y A S. Licence LA076406, 2007.

© ASWYAS 2007.
 Archaeological Services W Y A S
 PO Box 30, Nephaw Lane South, Morley, LS27 0UG
 Tel: 0113 383 7500 Fax: 0113 383 7501

Fig. 8. Interpretation of magnetometer data; north-east sector (1:1000 @ A3)

0 50m



Fig. 9. Processed greyscale magnetometer data; south-east sector (1:1000 @ A3)