

Figure 1. Site Location.



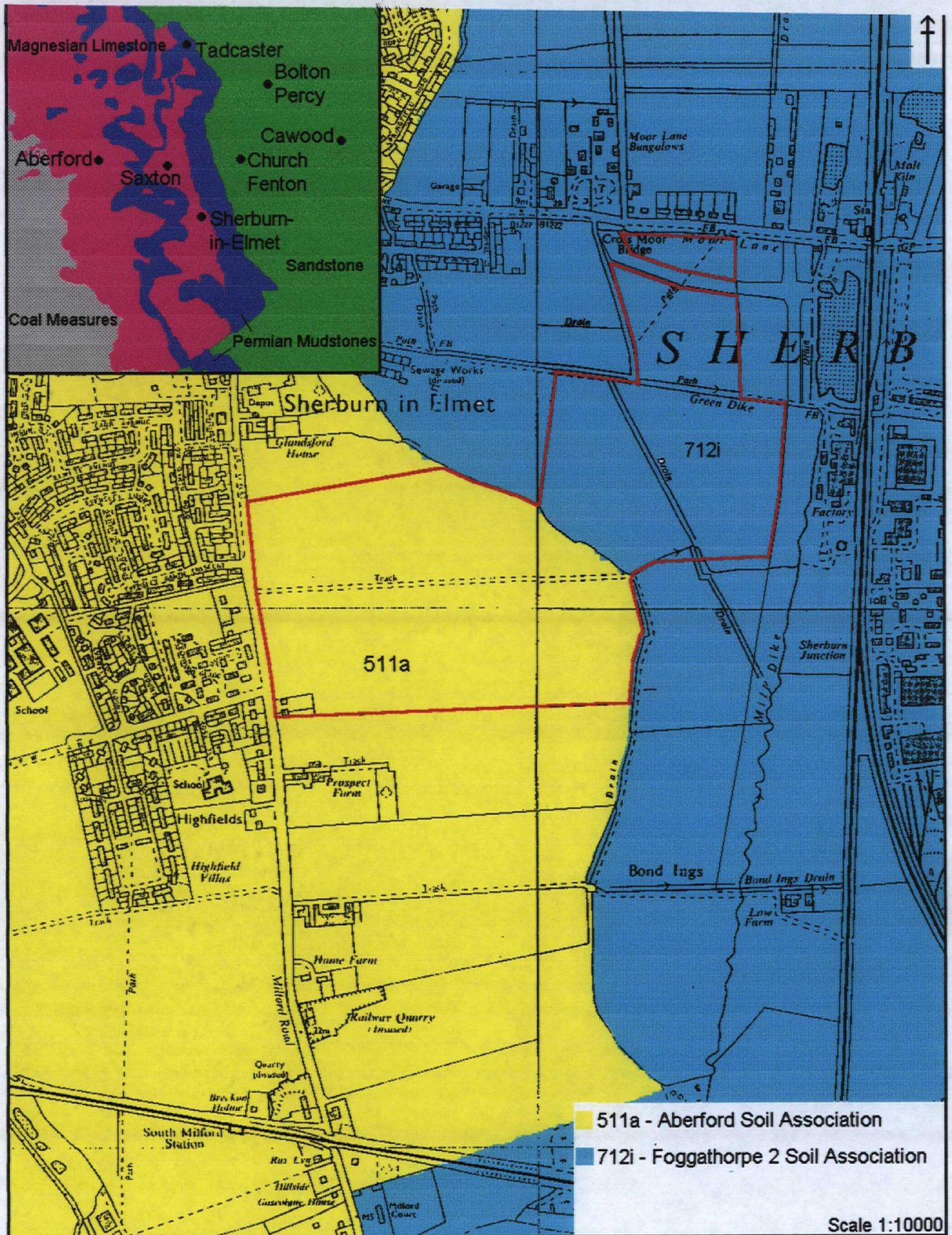


Figure 2. Solid and Drift Geology.



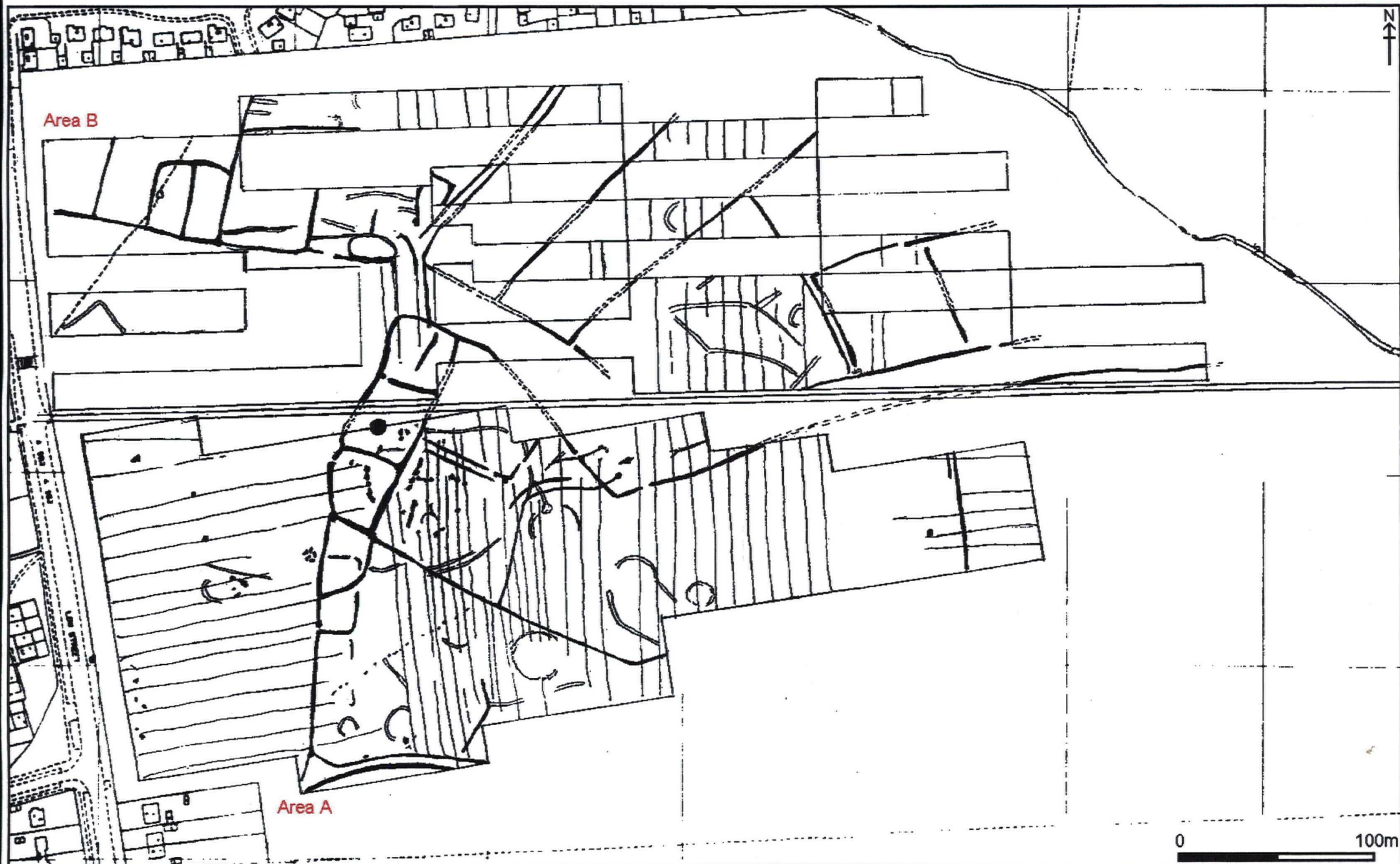


Figure 3. Geophysical Survey.

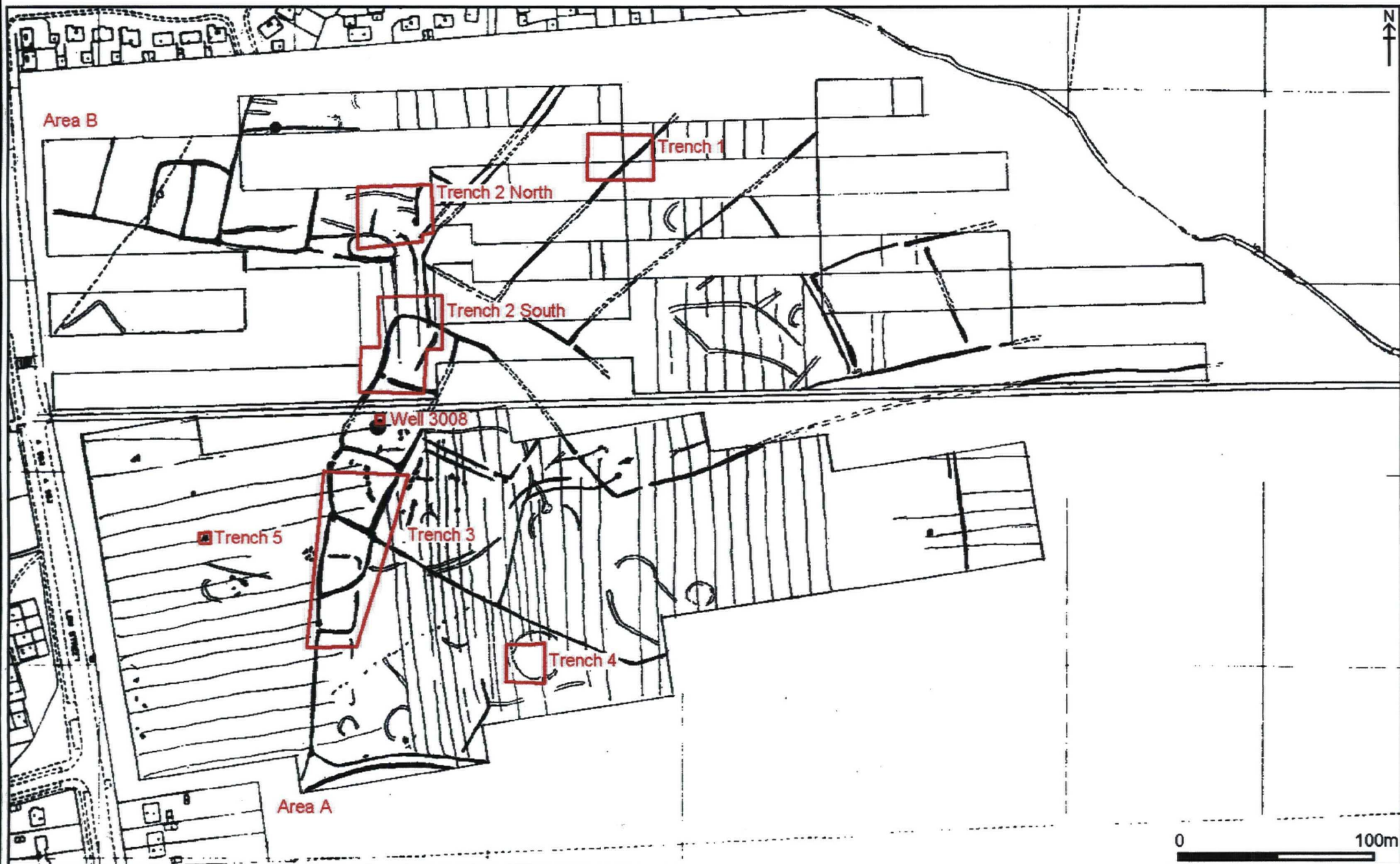


Figure 4. Trench Location.



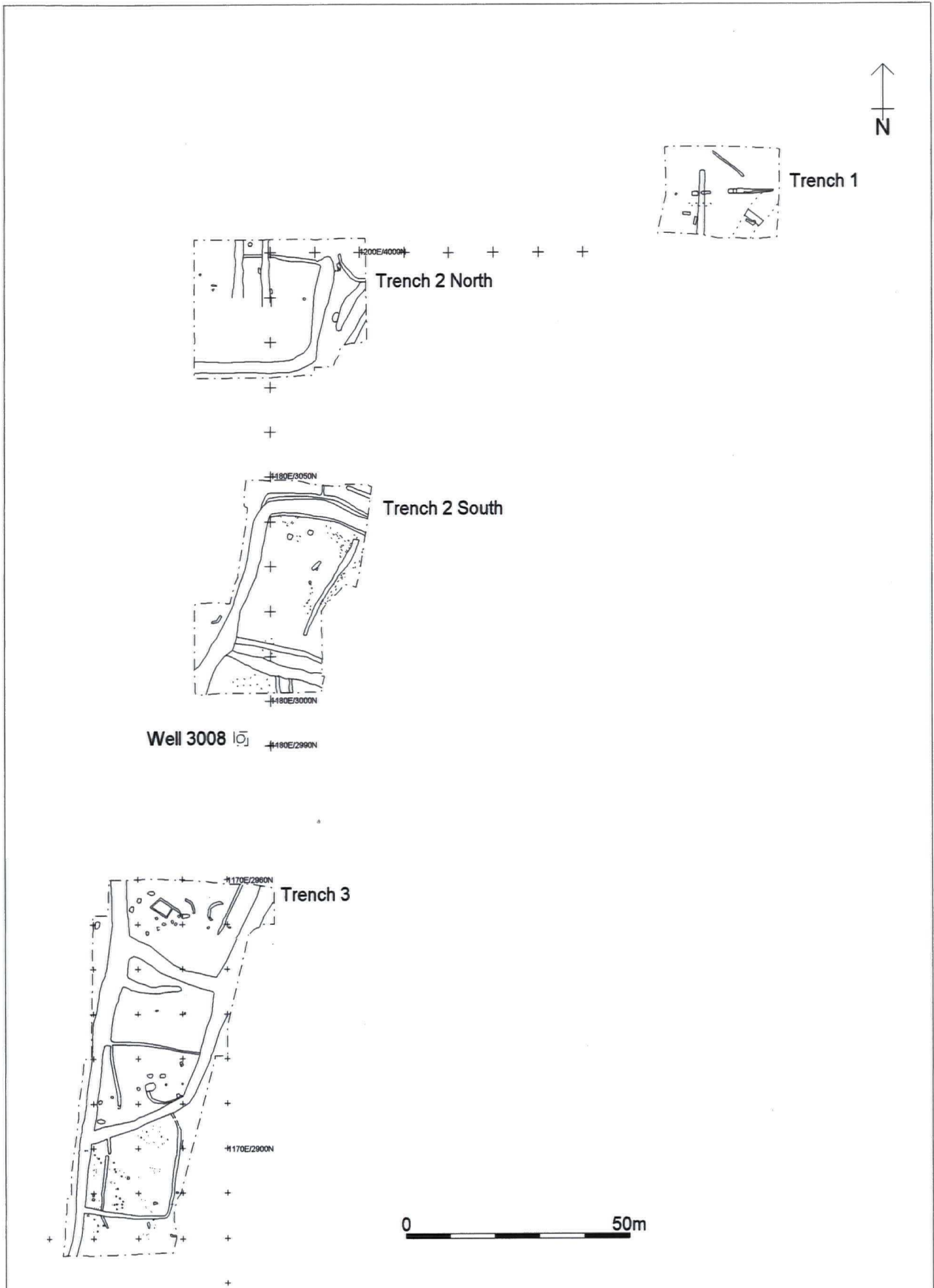


Figure 5. Site Plan.



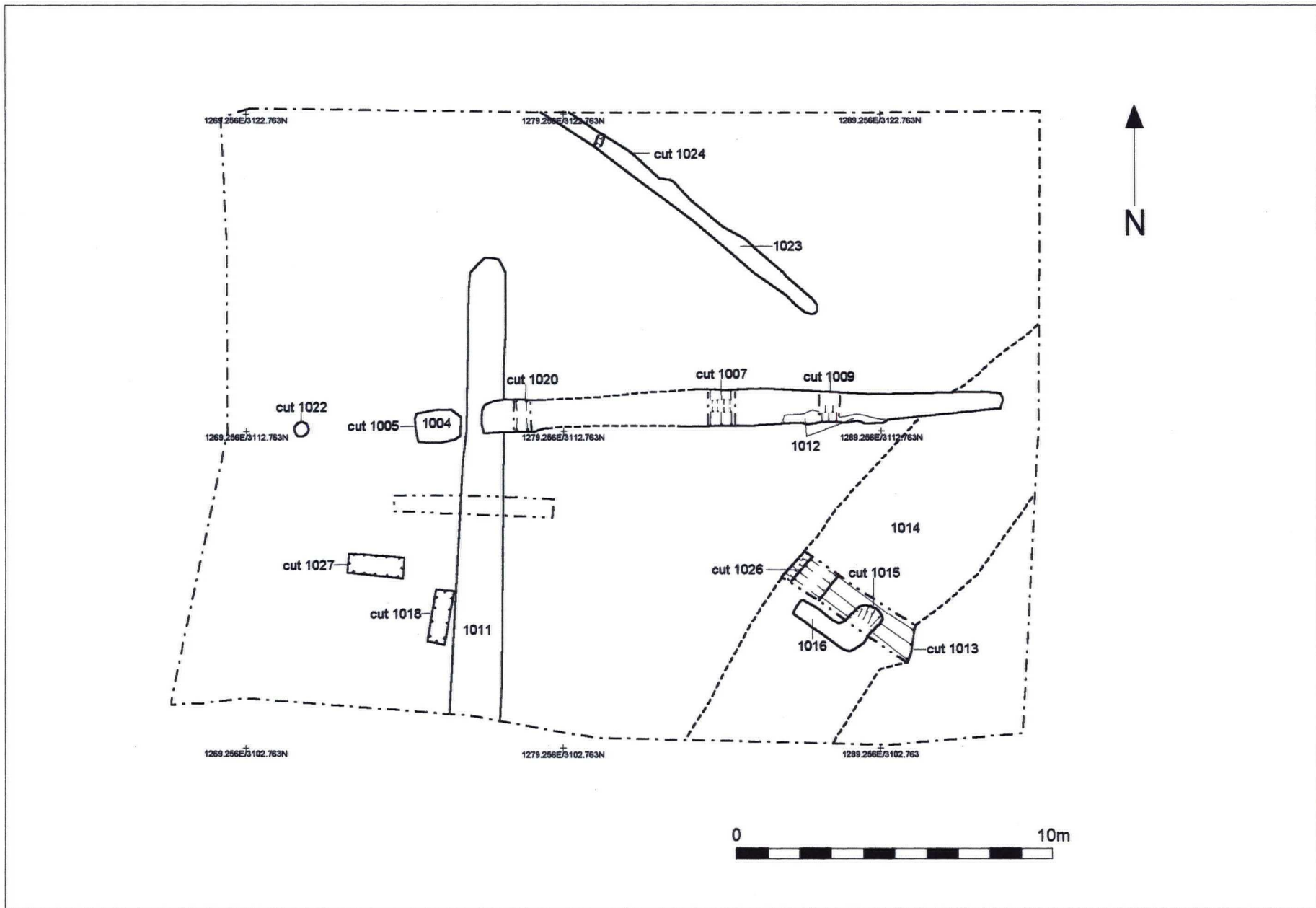


Figure 6. Trench 1. Feature plan.



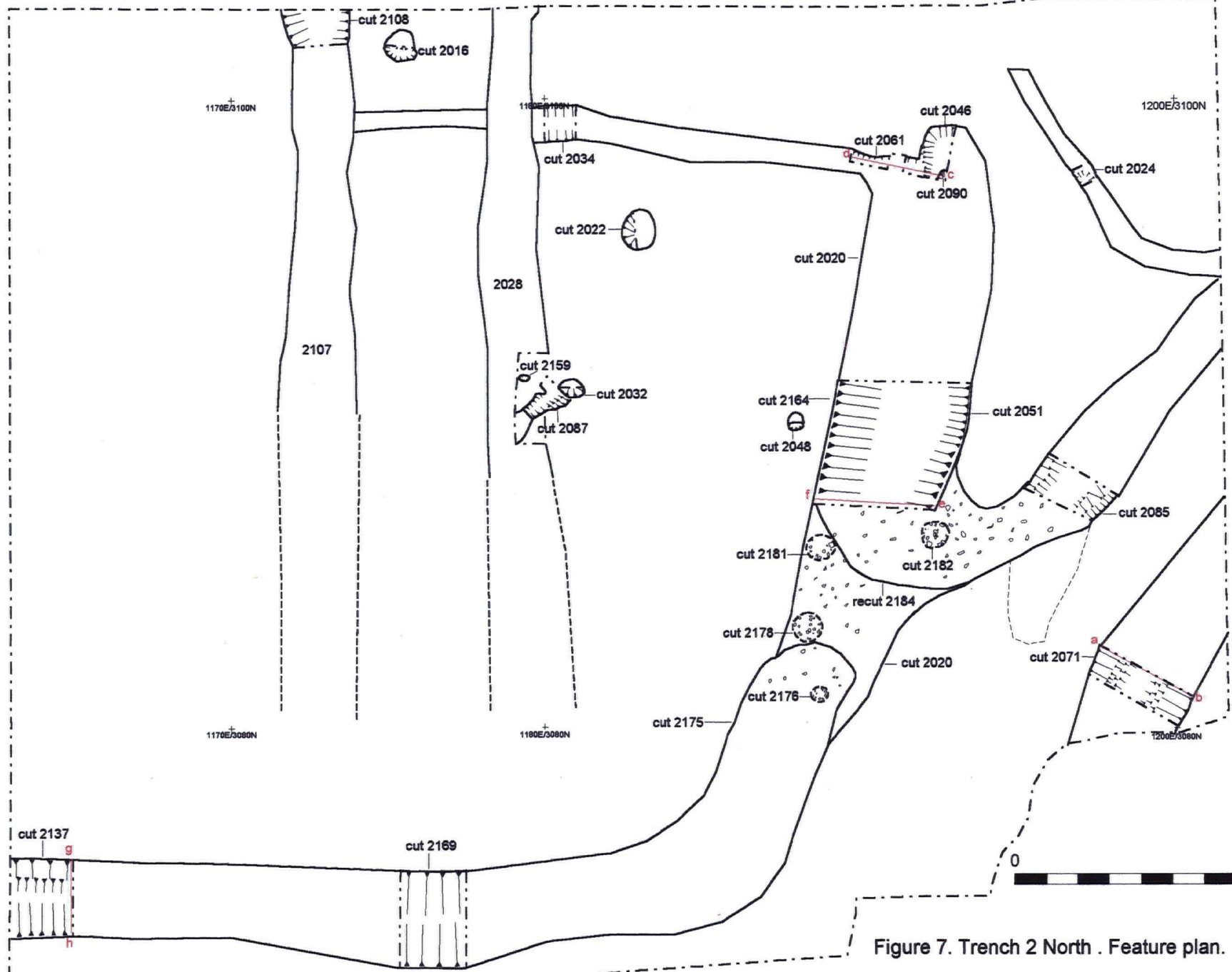


Figure 7. Trench 2 North . Feature plan.



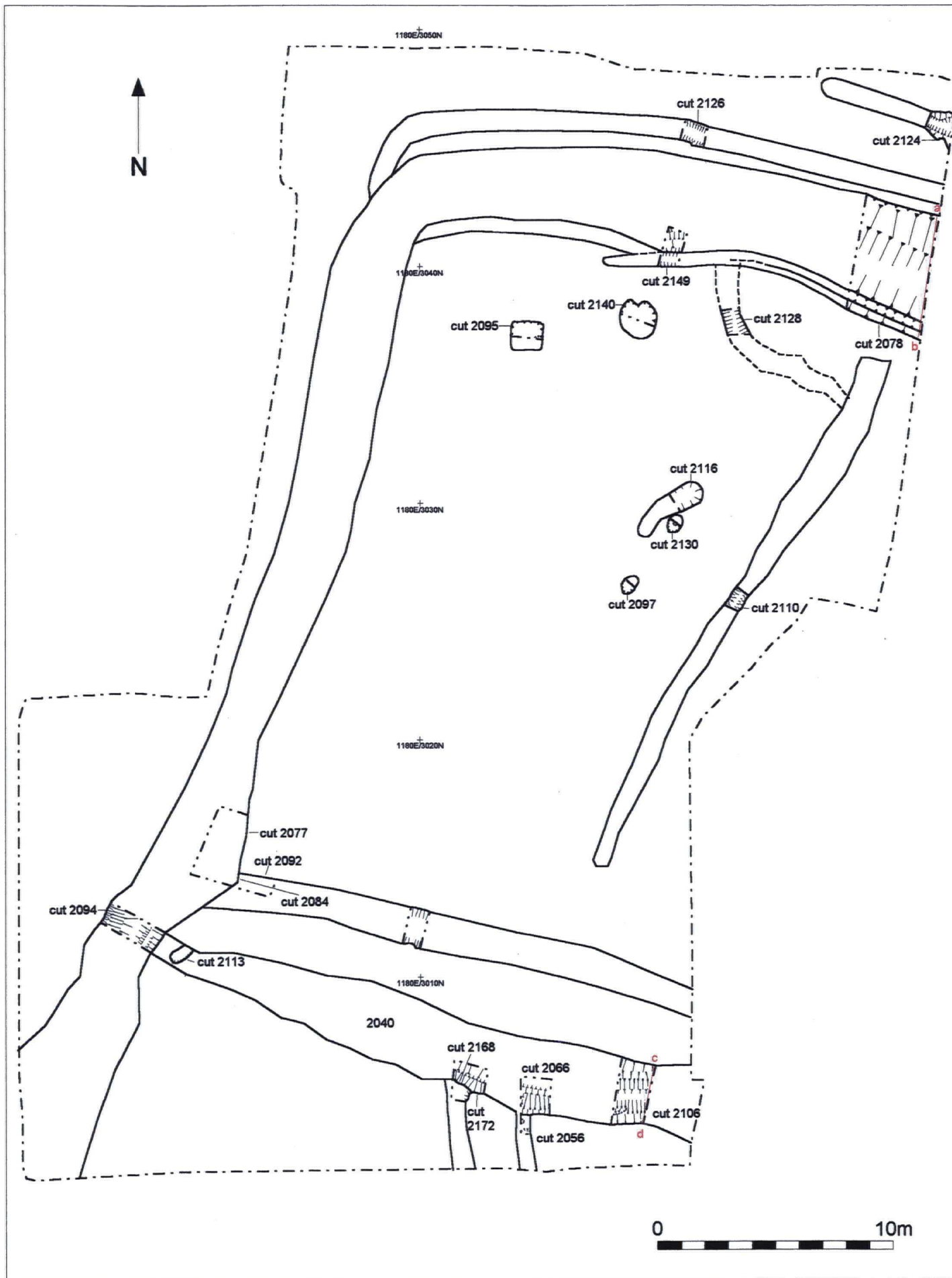


Figure 8. Trench 2 South. Feature plan.

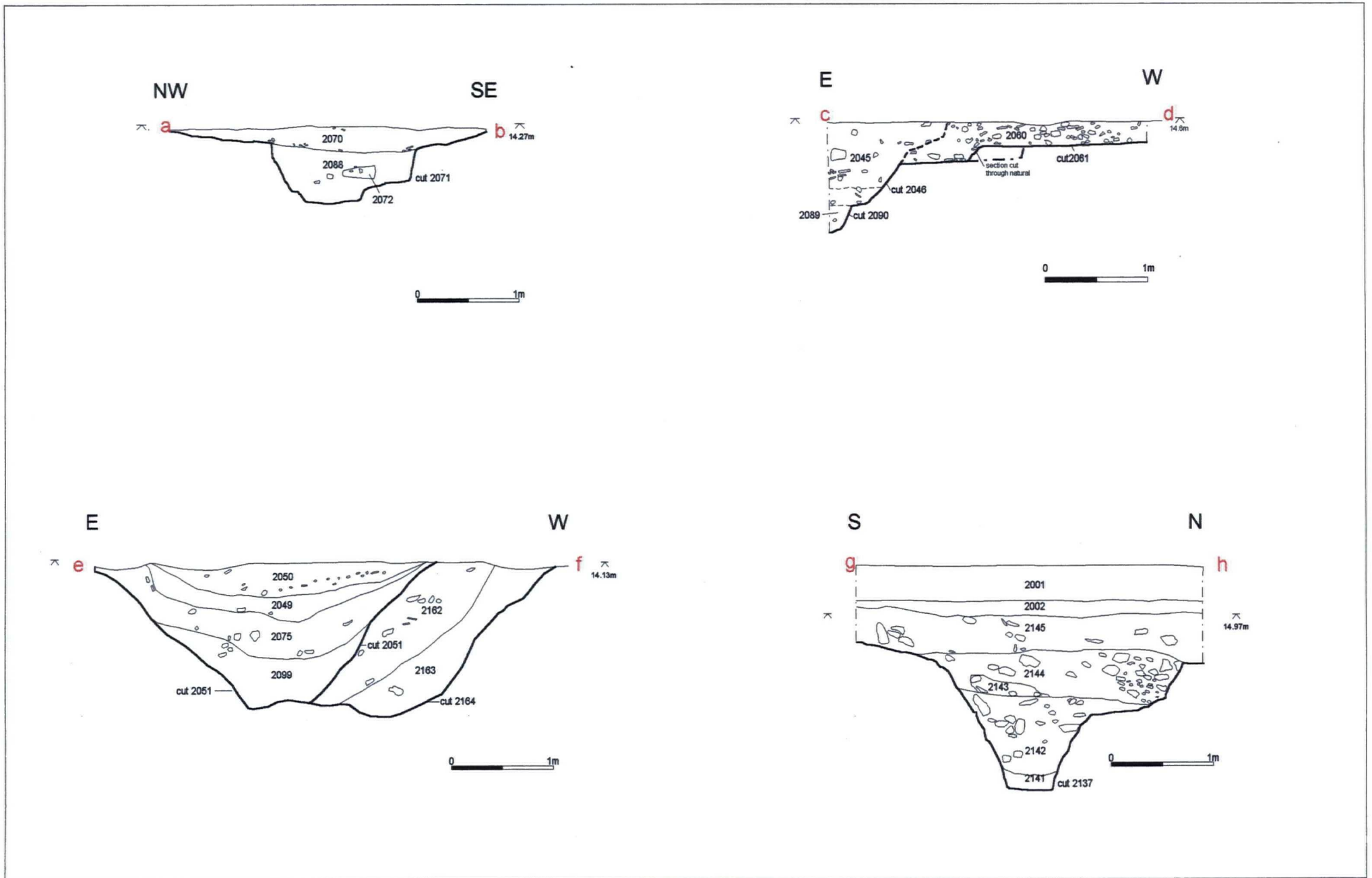


Figure 9. Trench 2 North sections.



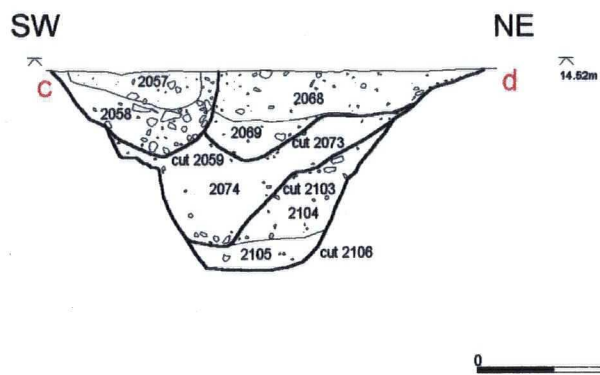
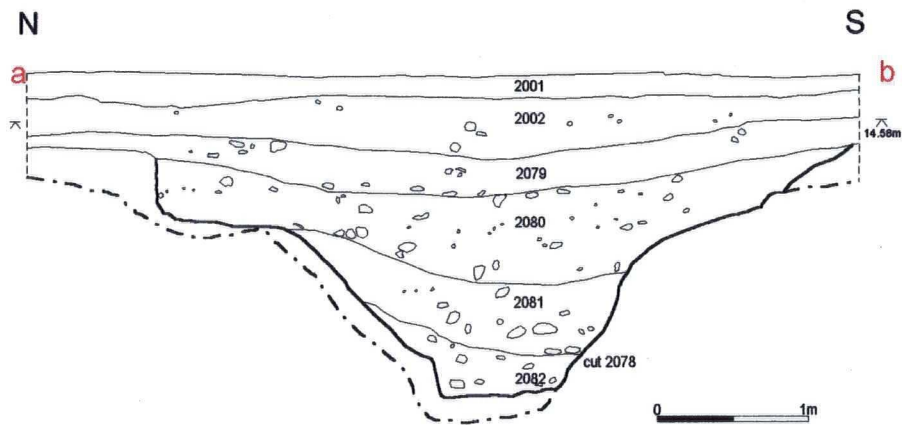


Figure 10. Trench 2 South sections.

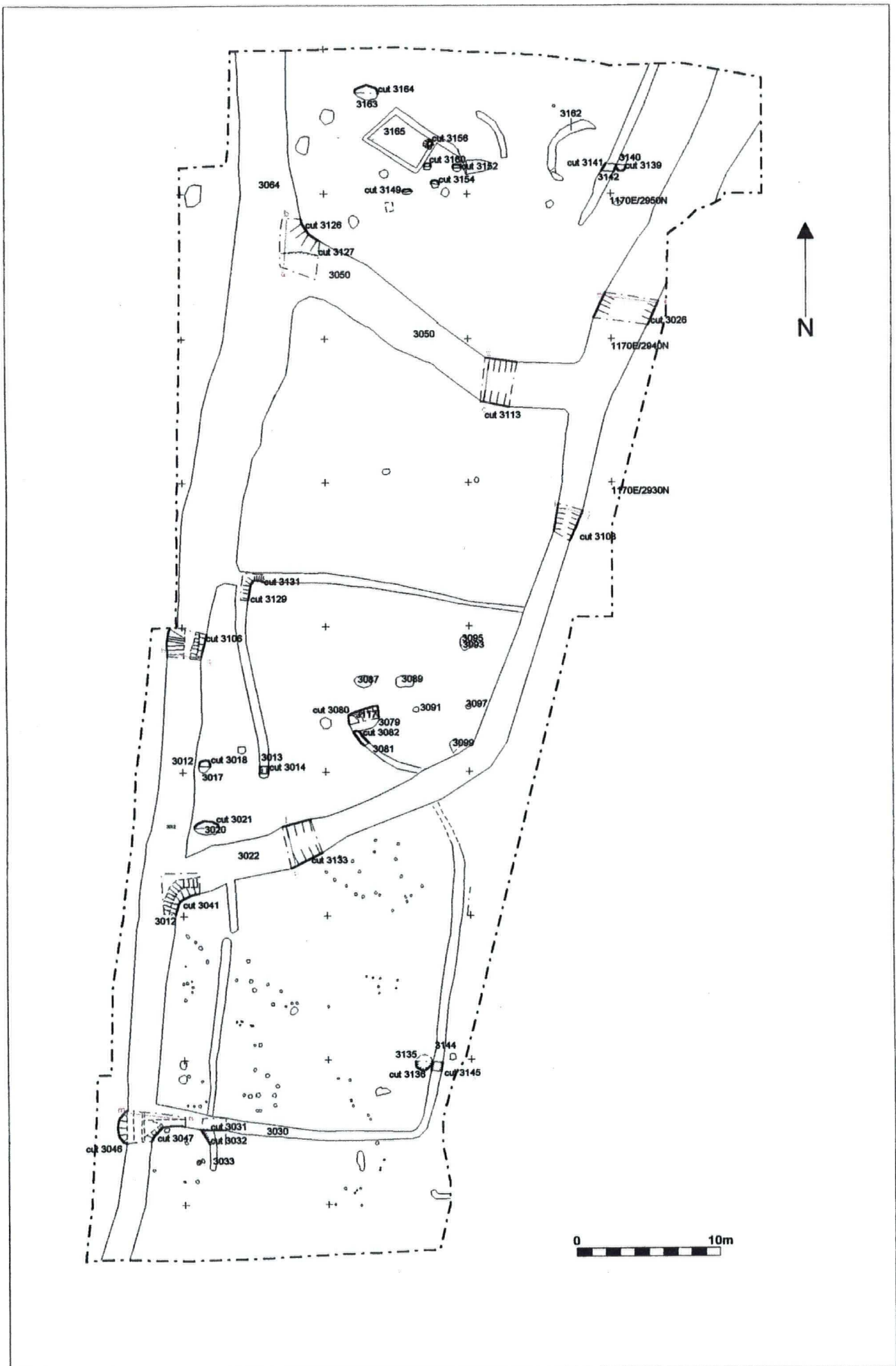


Figure 11. Trench 3 plan.



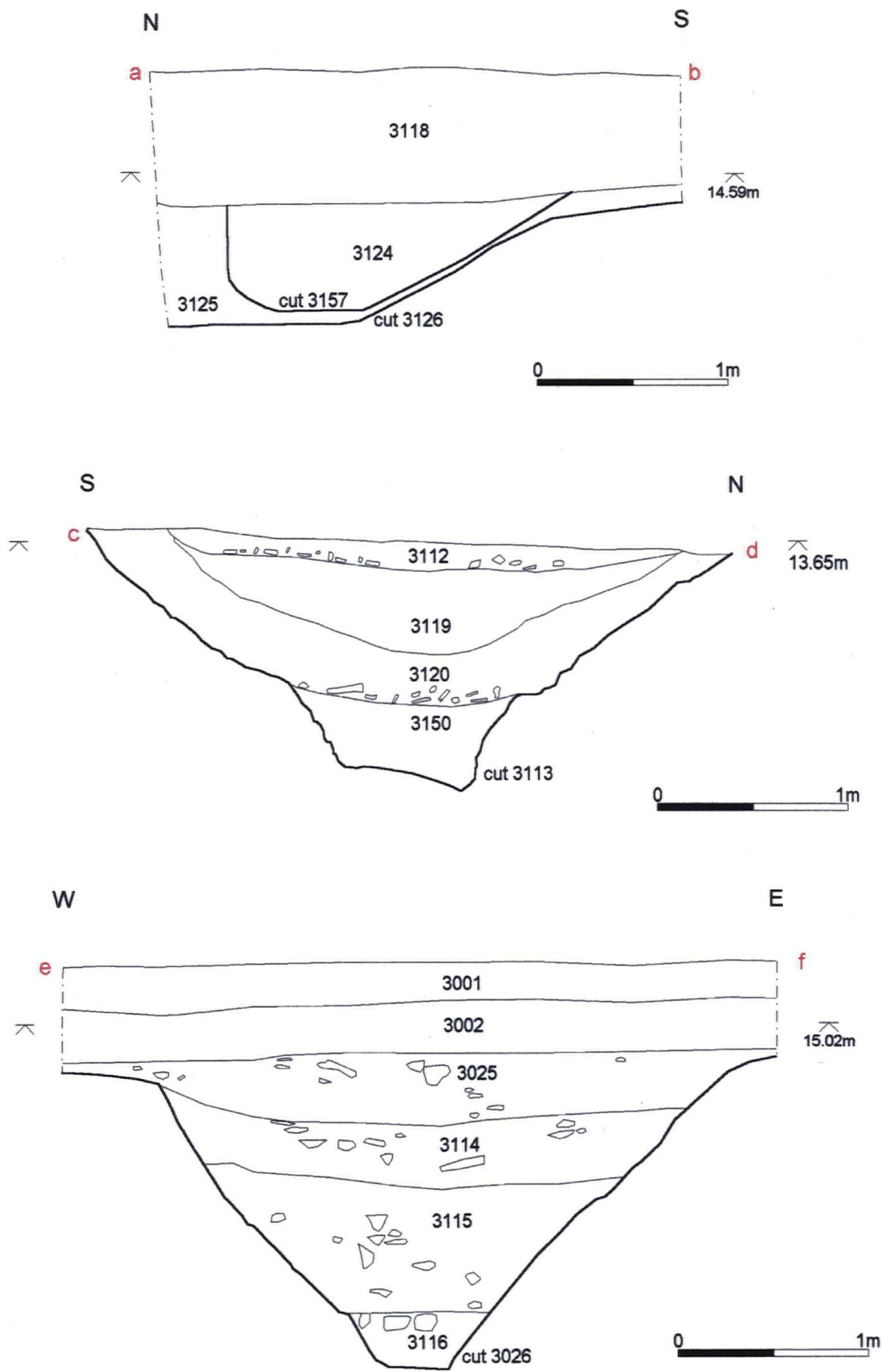


Figure 12. Trench 3 sections.

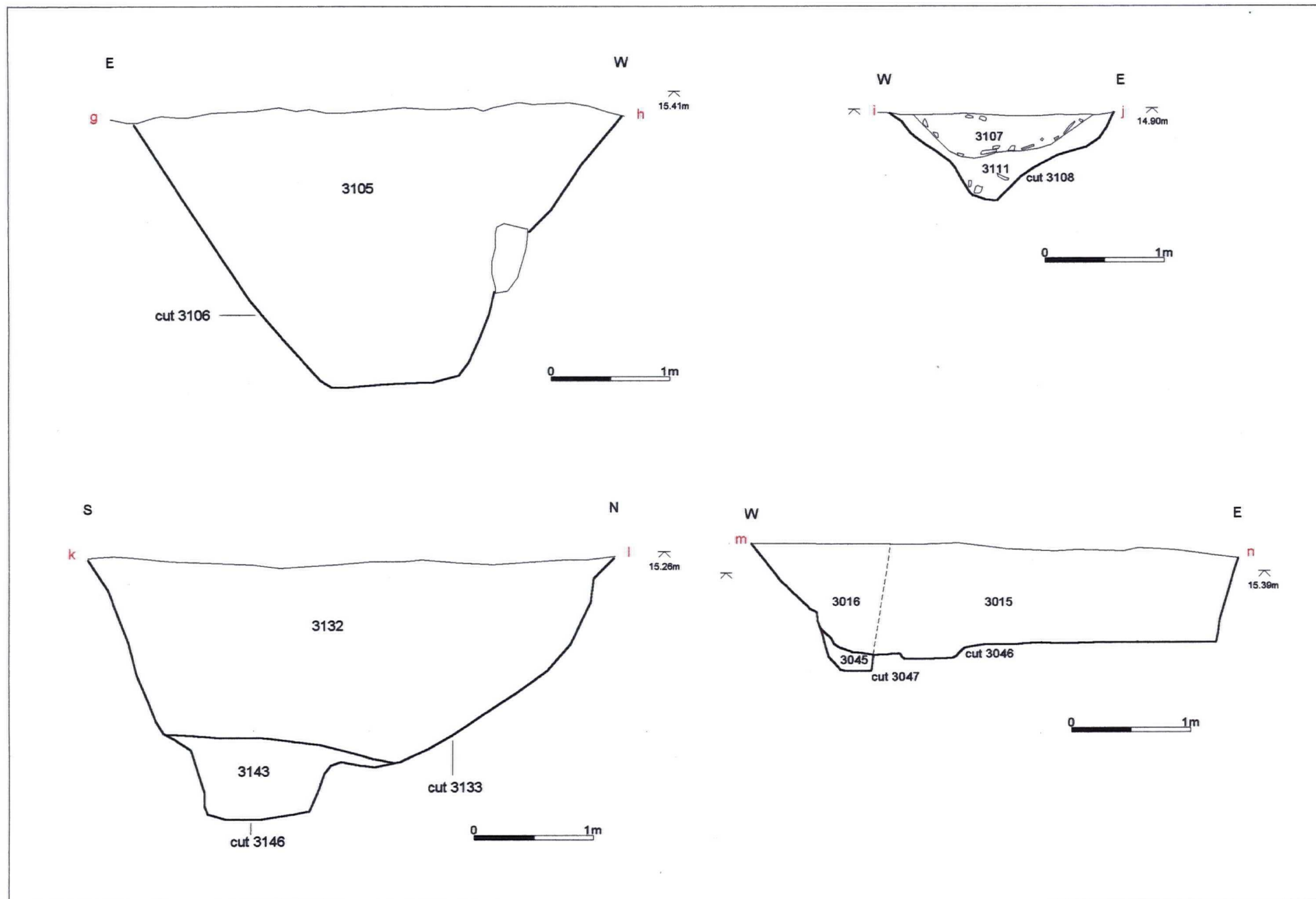


Figure 13. Trench 3 sections.



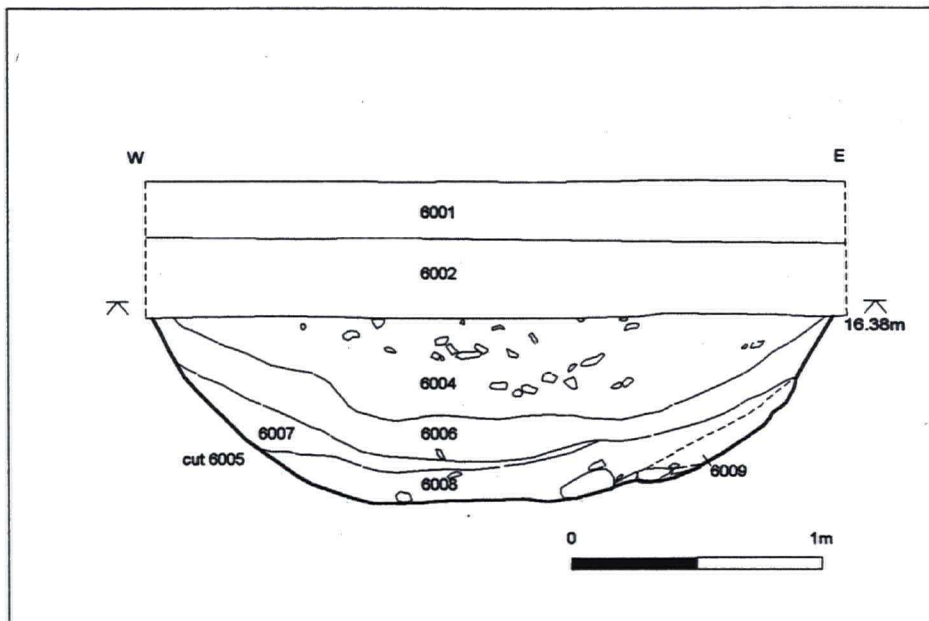


Figure 14. Trench 5. Feature 5005. South Facing Section



Plate 1.  
Trench 1. Ditch 1026.



Plate 2.  
Trench 1. Hedgerow 1007. Facing West.



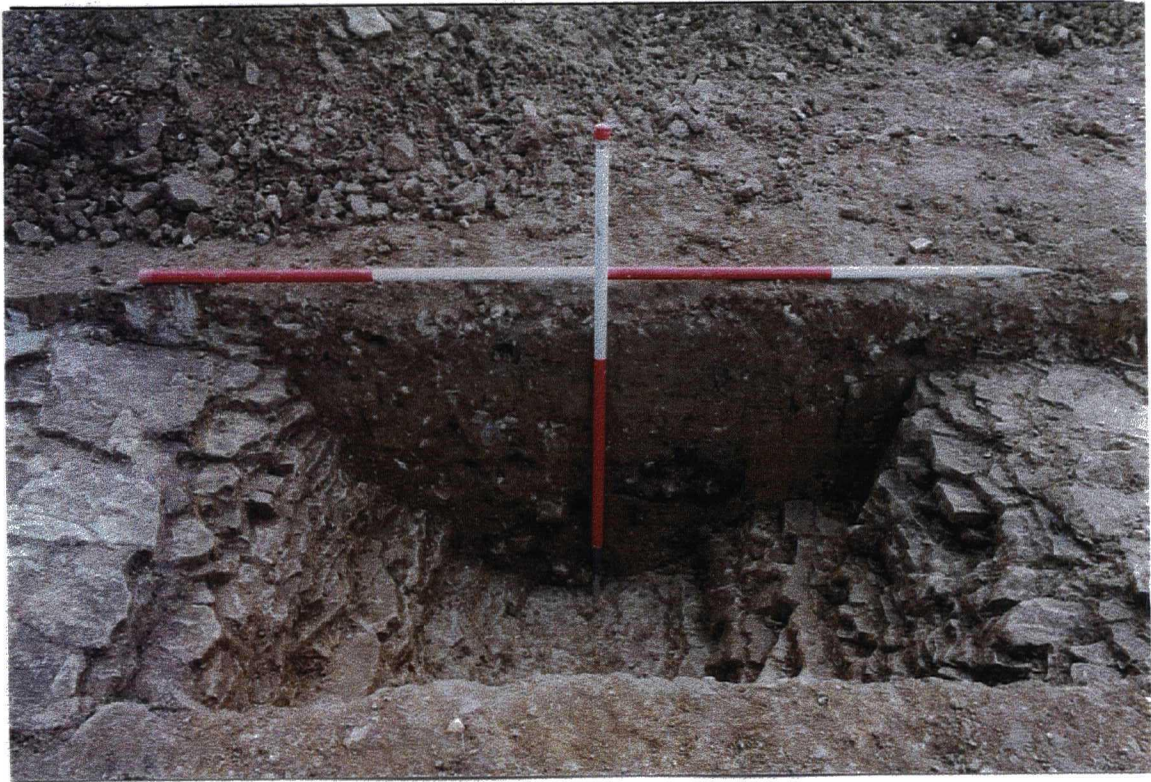


Plate 3  
Trench 2 (North). Ditch 2071. Facing North East.



Plate 4  
Trench 2 (North). North East Corner. Facing North.





Plate 5  
Trench 2 (North). Ditch 2085. Facing North East.



Plate 6.  
Trench 2 (South). Ditch 2078. Facing East.





Plate 7.  
Trench 2 (South). Ditches 2059, 2075, 2103, 2106. Facing East.

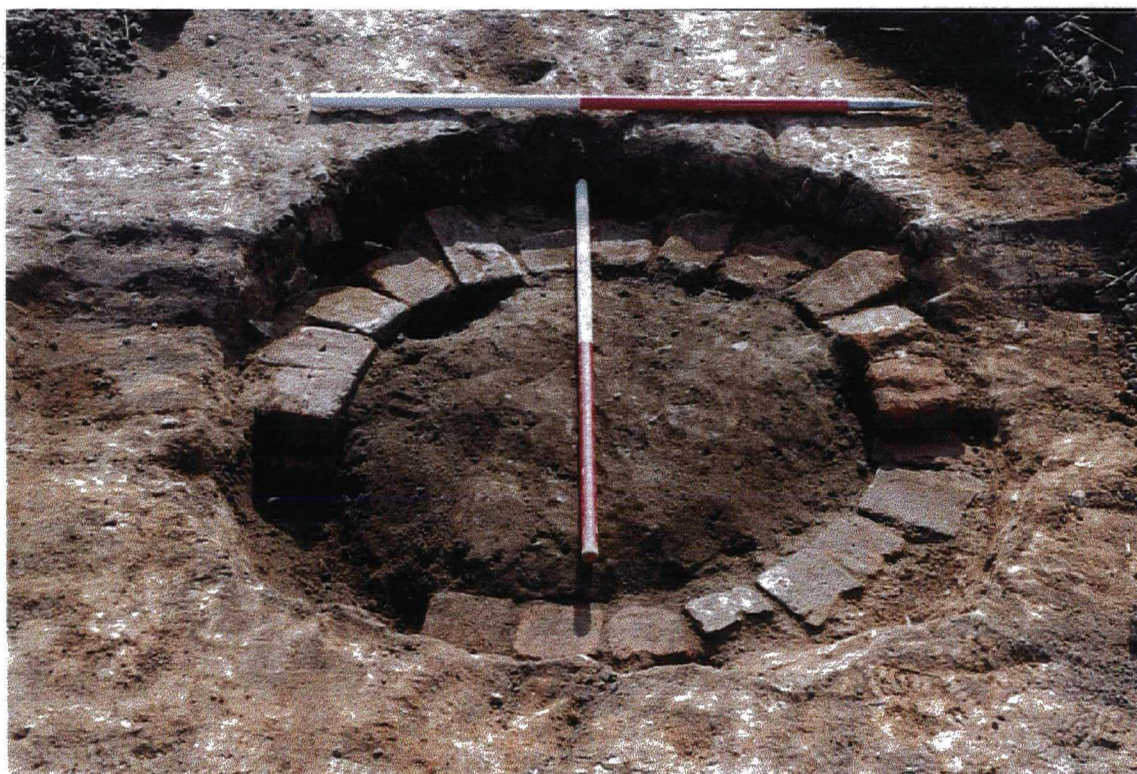


Plate 8.  
Trench 3. Well 3008 Pre-ex. Facing East.



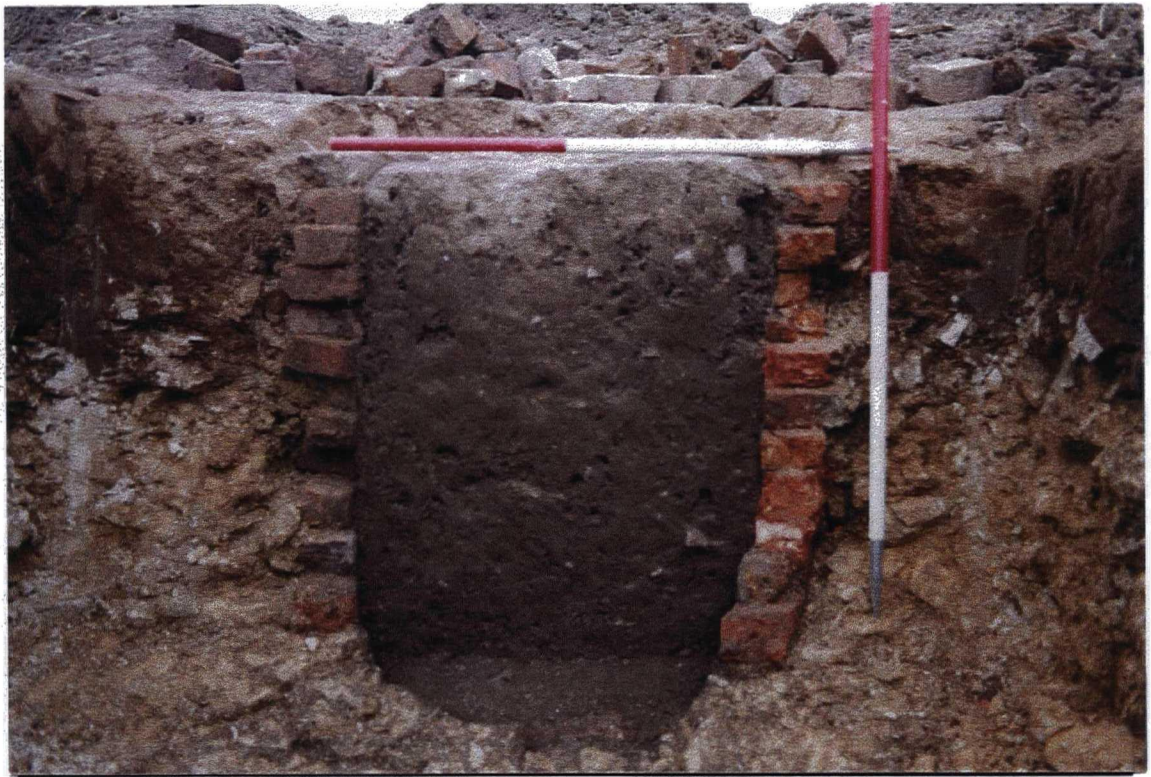


Plate 9.  
Trench 3. Well 3008 section. Facing North.



Plate 10.  
Trench 3. General view 3082. Facing South.





Plate 11.  
Trench 3. Ditches 3126 & 3127. Facing East.

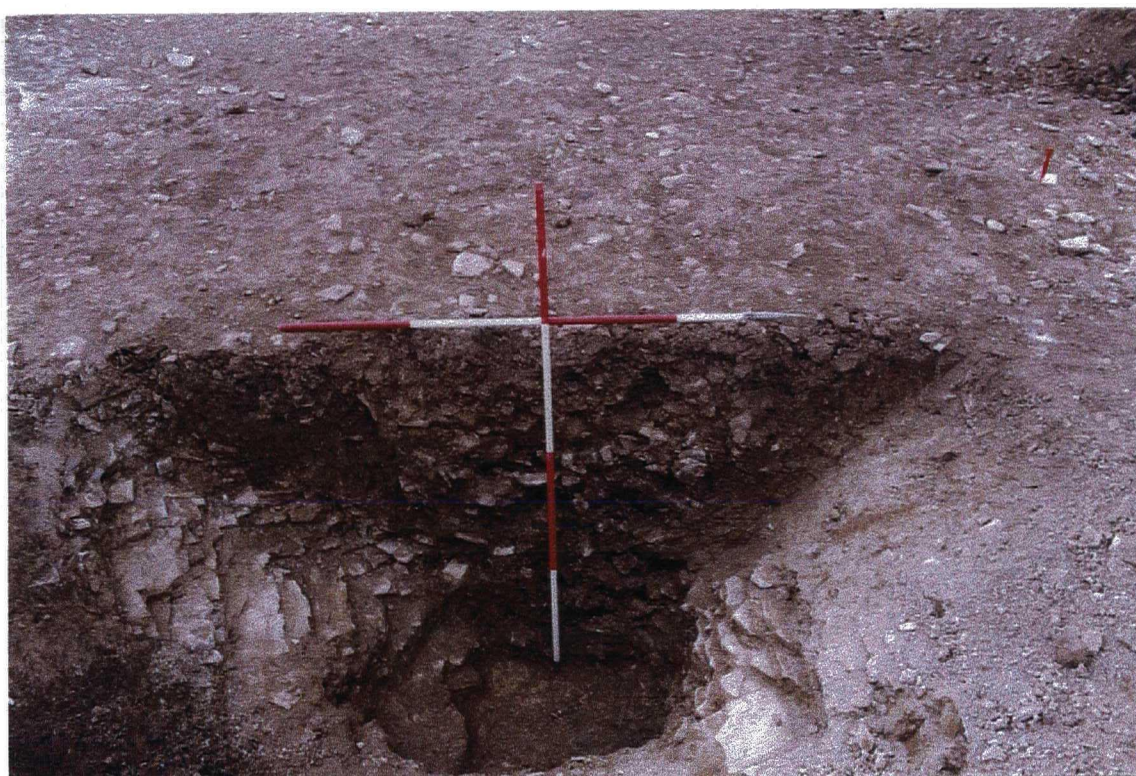


Plate 12.  
Trench 3. Ditch 3133. Facing West.



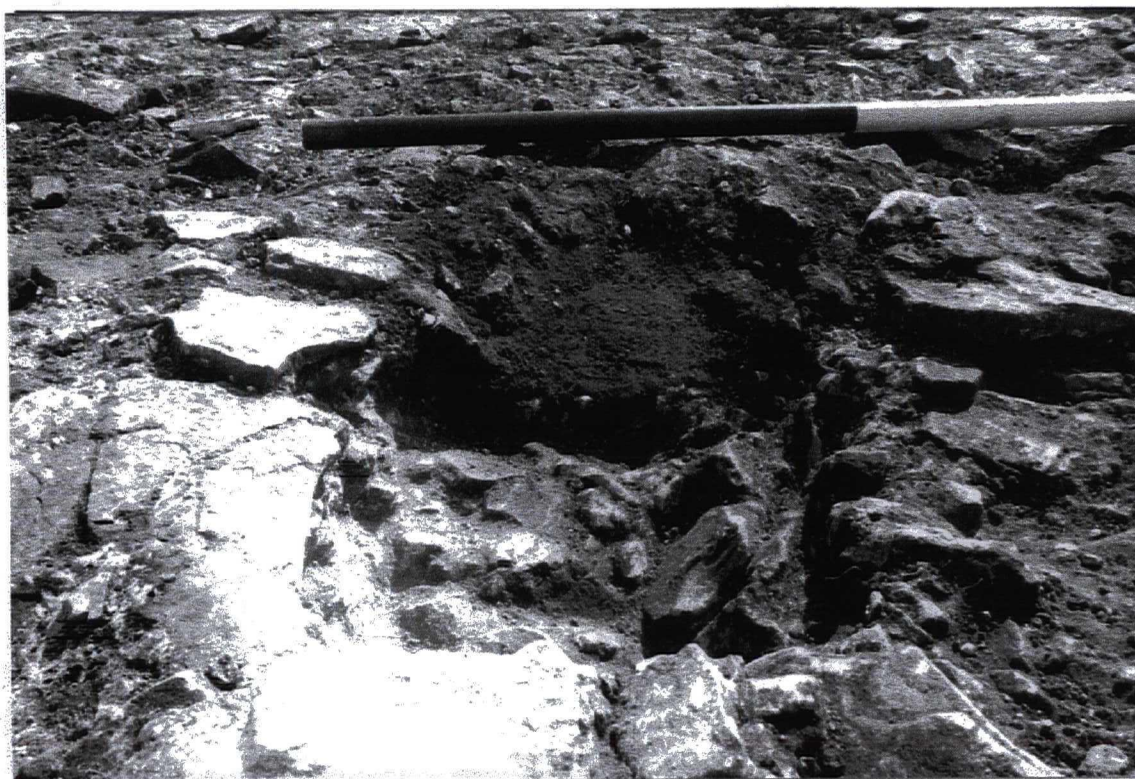


Plate 13.  
Trench 3. Within Building 3155/6. Facing East.



Plate 14.  
Trench 3. Ditch 3133. Facing West.



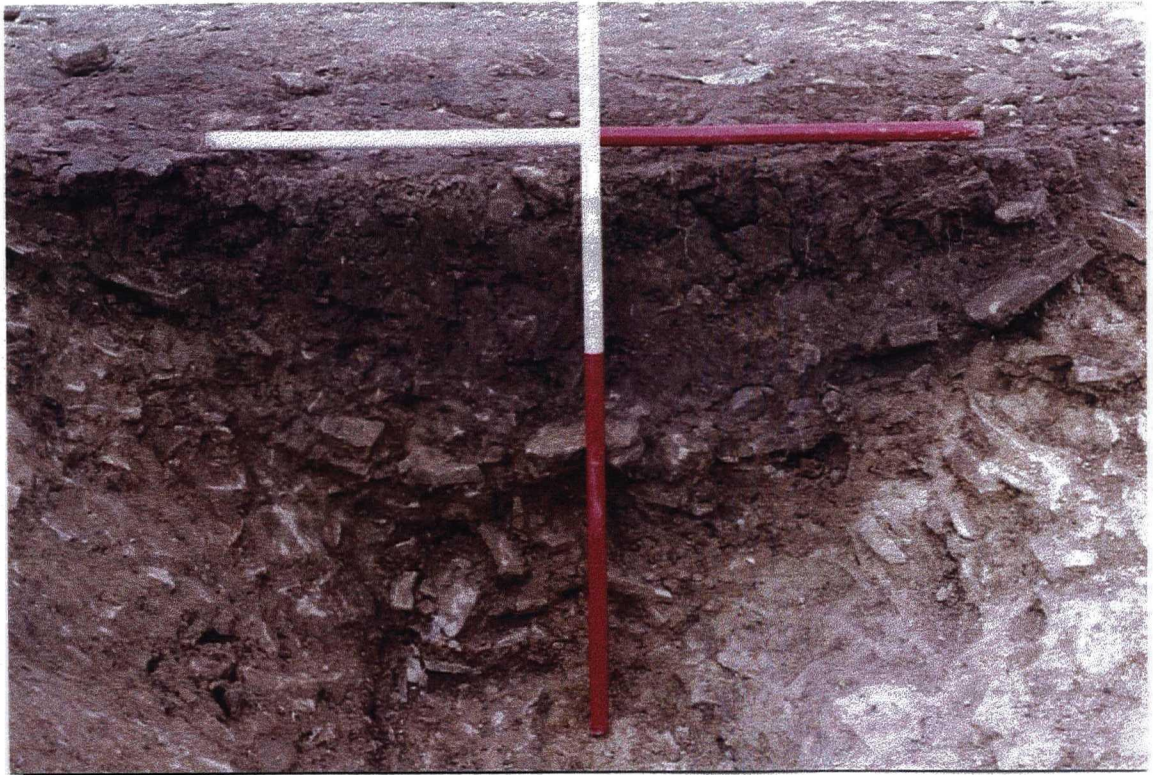


Plate 15.  
Trench 3. Ditches 3108 = 3039. Facing North.



Plate 16.  
Trench 3. Ditch 3039. Finds in fill 3040. Facing North.





Plate 17.  
Trench 3. Ditches 3012 & 3022. Facing East.



Plate 18.  
Trench 3. General view of South West corner. Ditches 3032, 3046 & 3047. Facing East.



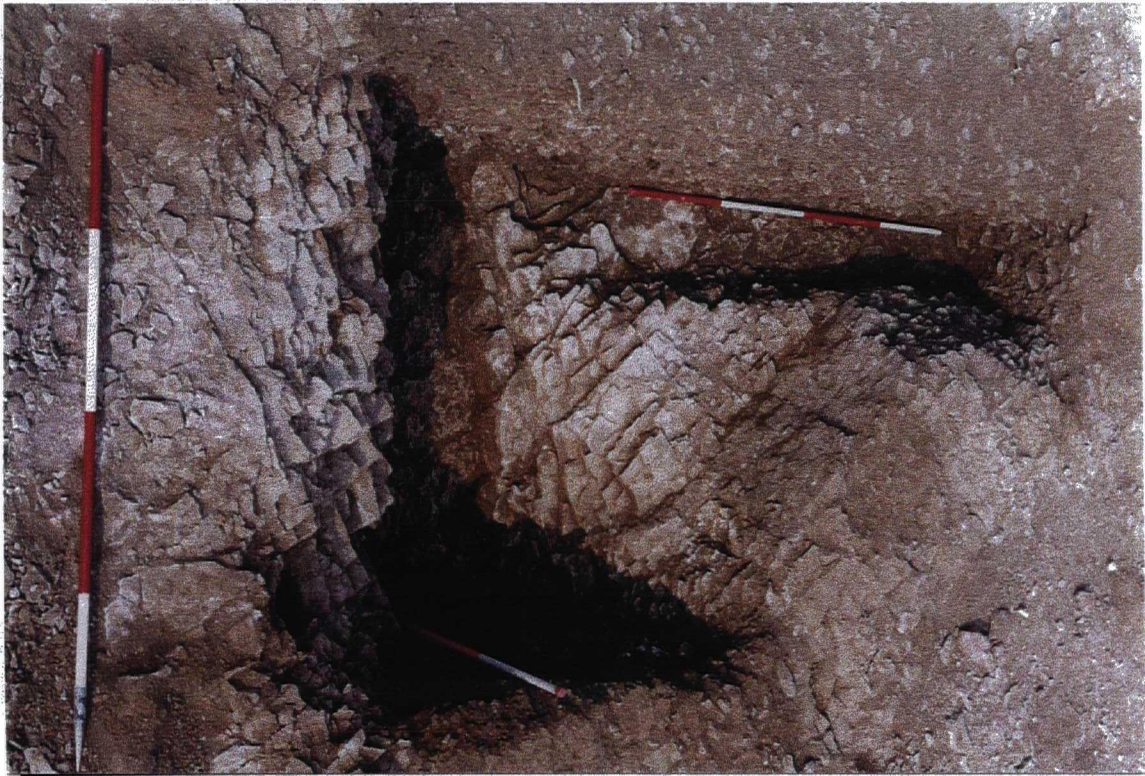


Plate 19.  
Trench 3. Ditches 3046 & 3047. Facing North.



Plate 20.  
Trench 3. Ditches 3030 & 3032. Facing East.



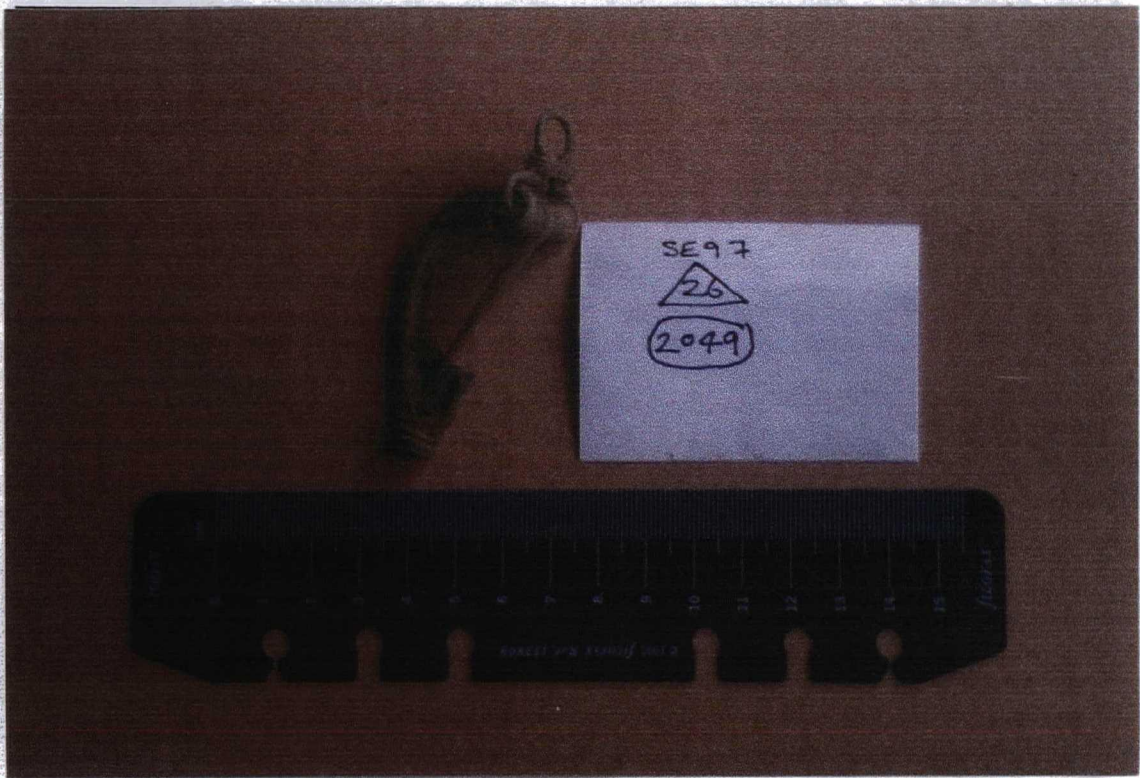


Plate 21.  
Trench 2. Ditch 2051. Fill 2049. Small find 26. Copper alloy Roman brooch.

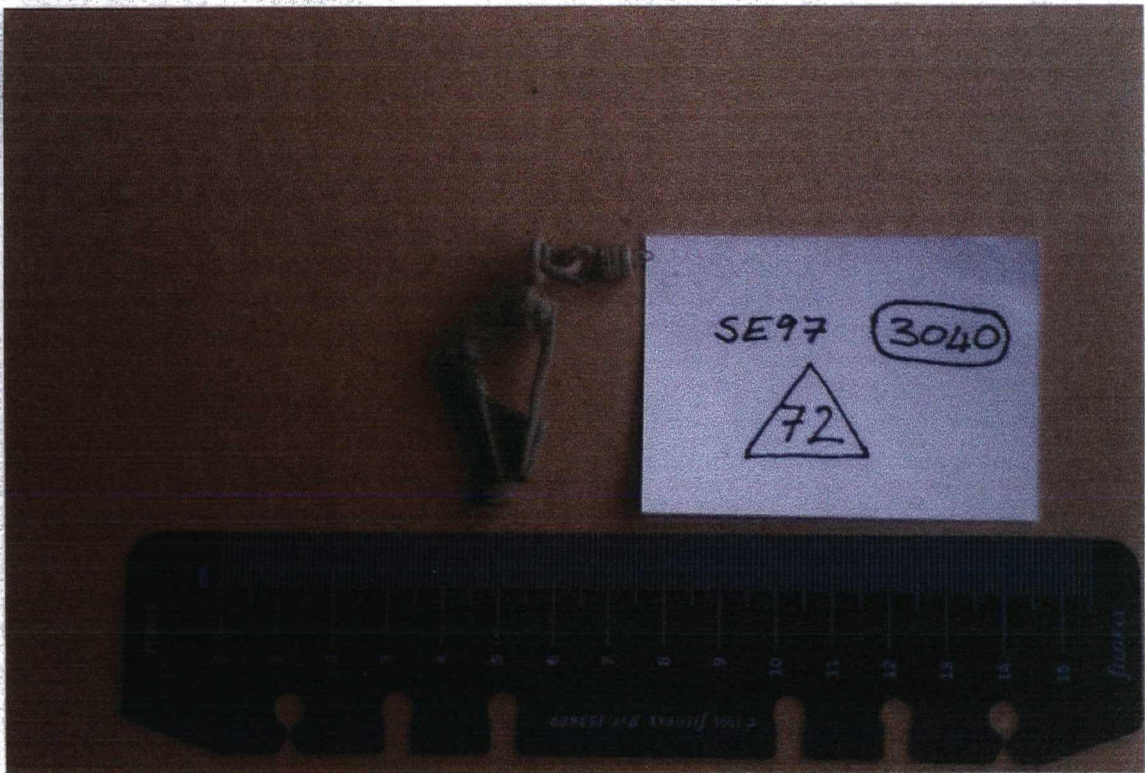


Plate 22.  
Trench 3. Ditch 3039. Fill 3040. Small find 72. Roman brooch.



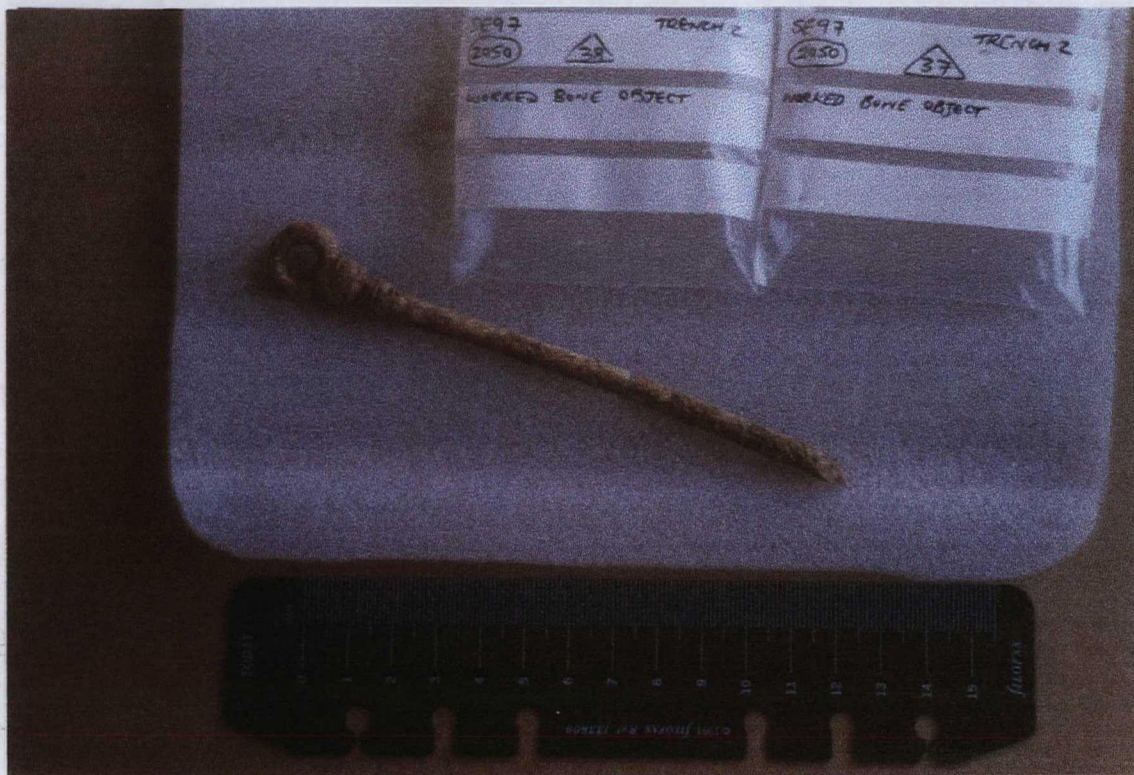


Plate 23.  
Trench 2. Ditch 2051. Fill 2050. Small finds 37 & 38. Worked bone.

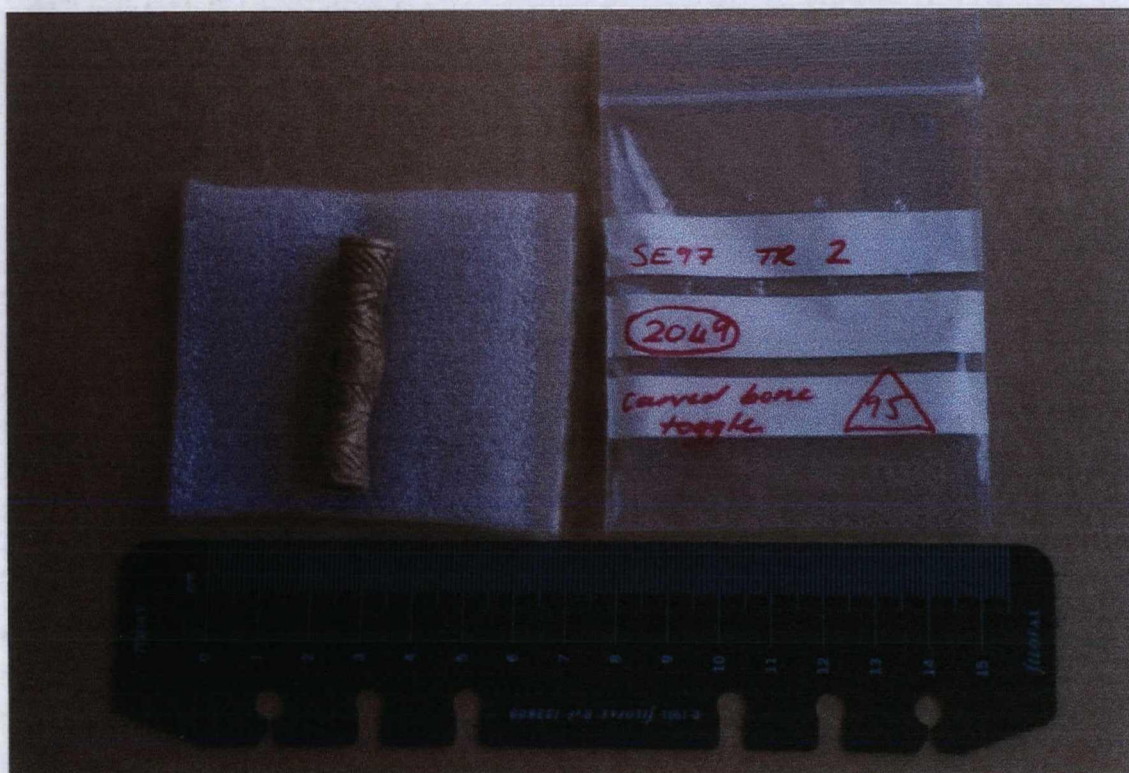


Plate 24.  
Trench 2. Ditch 2051. Fill 2049. Small find 95. Decorated bone toggle.