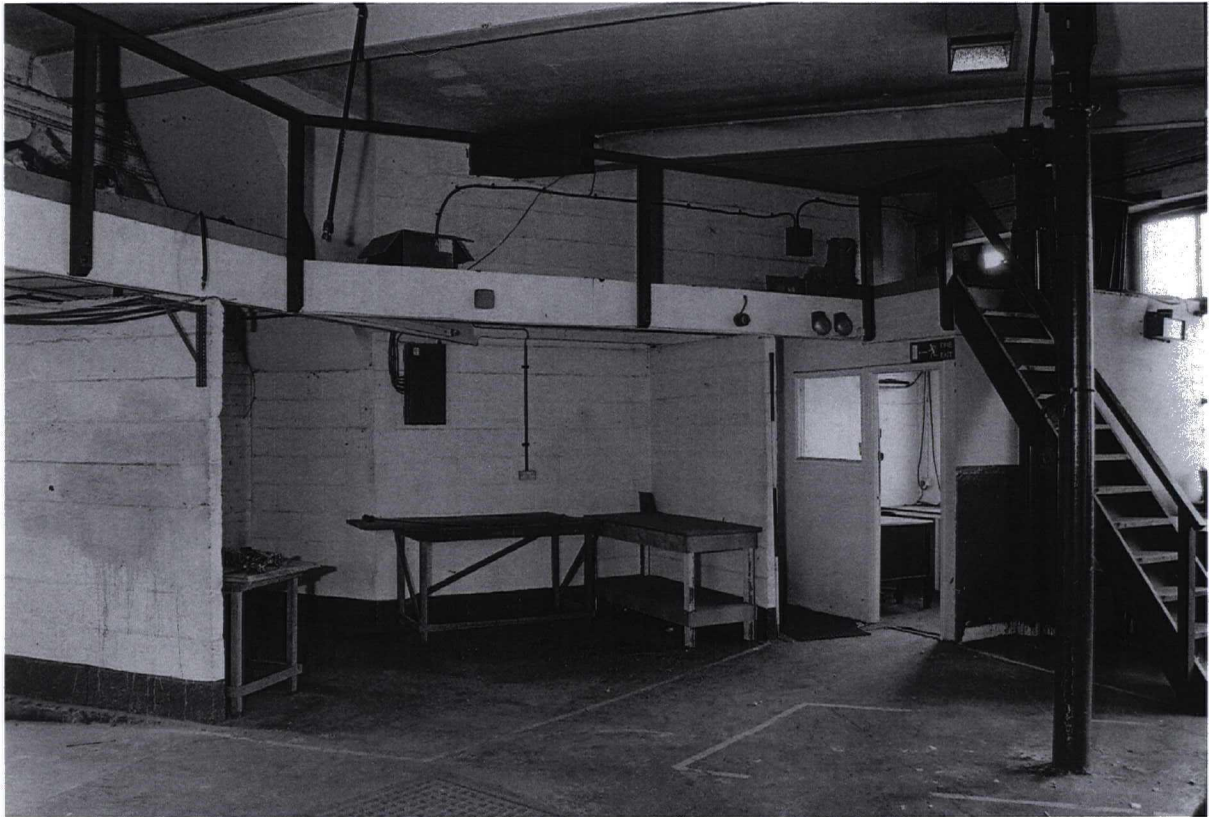


Photograph 35 9985/25 NW  
View showing cast-iron columns and a steel stanchion



Photograph 36 9985/28 SE  
Cast-iron columns and a small mezzanine floor



Photograph 37 9985/24 S  
Wooden stair leading up to the later mezzanine floor



Photograph 38 9985/27 SW  
A cast-iron column in the foreground and a pair of two-over-four, top-opening, case-  
ment windows beyond



Photograph 39 9985/22 W  
Large double loading doors



Photograph 40 9985/23 W  
A view of the loading bay



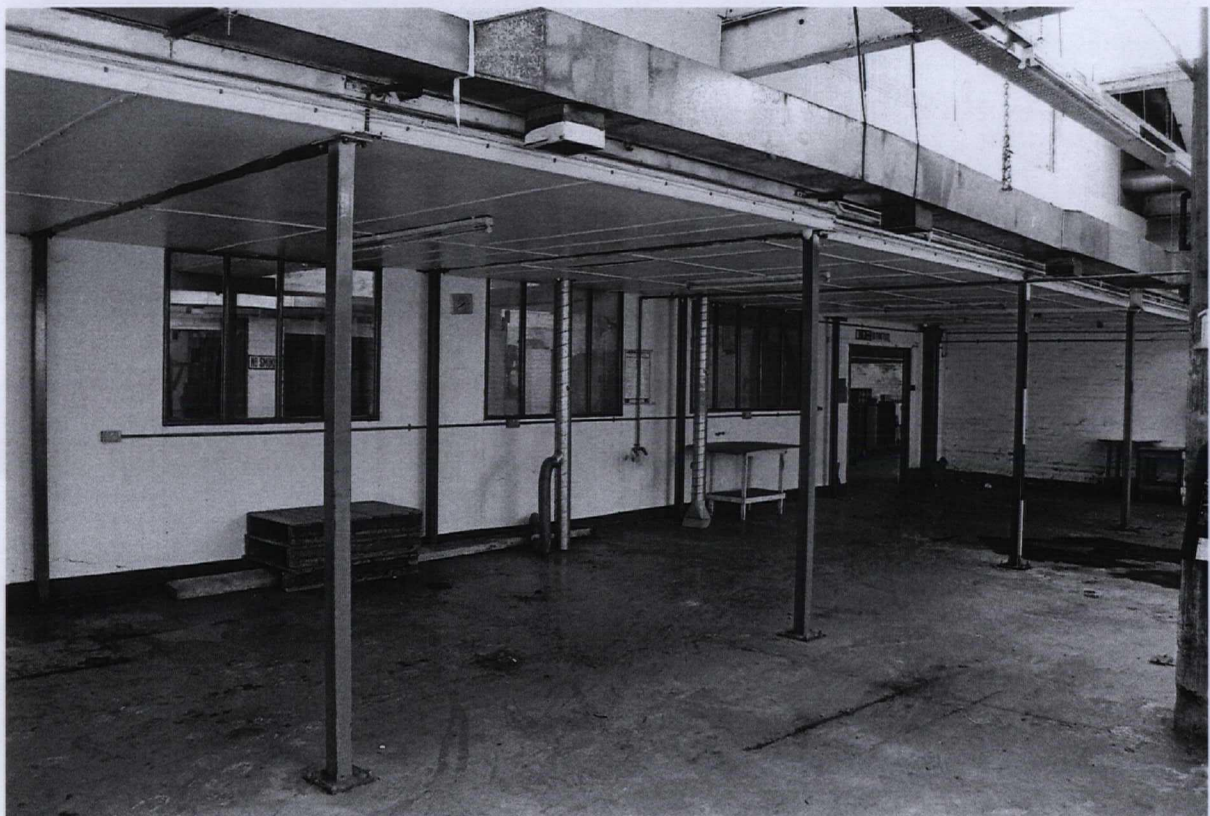
Photograph 41                      W  
Partition wall to the side of the loading bay



Photograph 42    9985/21    E  
A mezzanine floor supported on a row of brick columns



Photograph 43 9985/5 W  
A blocked opening, possibly a wall box



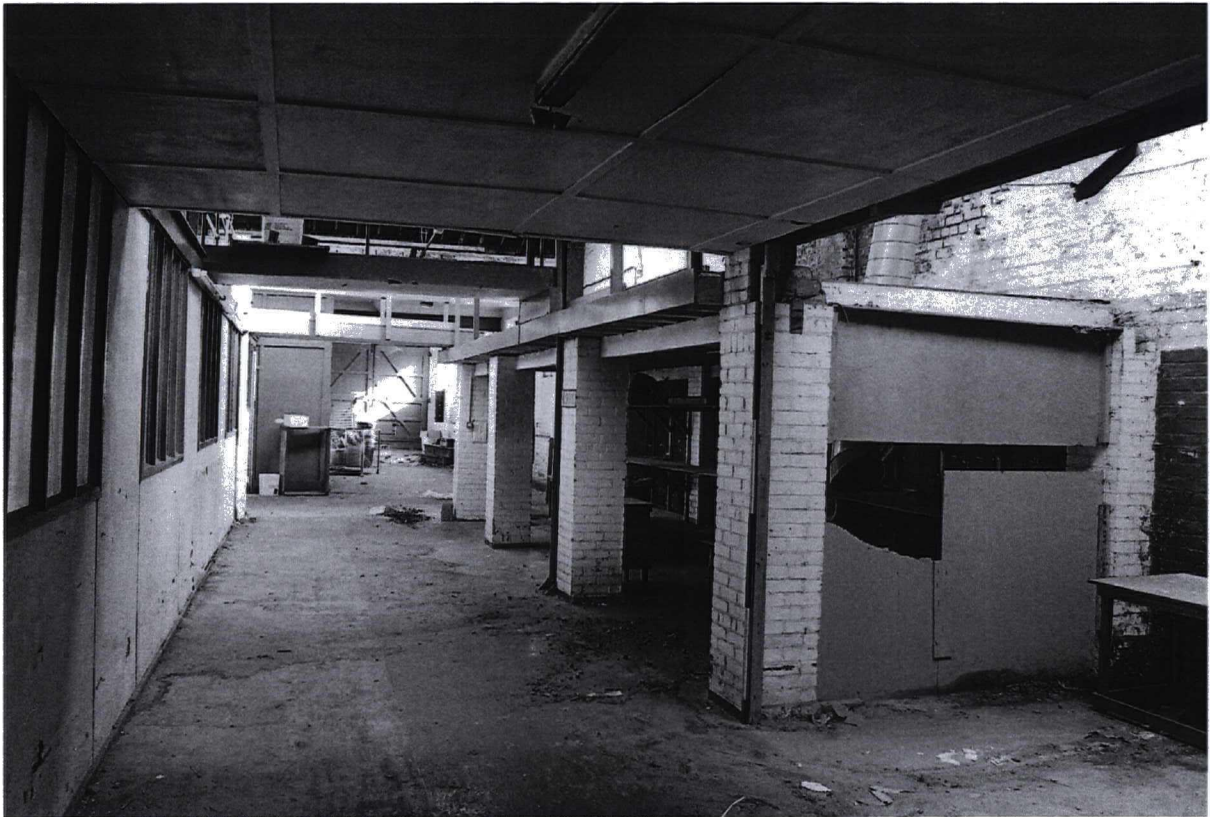
Photograph 44 9983/25 NE  
Mezzanine storage area supported on a steel framework



Photograph 45 9983/24 S  
Bolted steel roof trusses



Photograph 46 9983/23 SW  
General internal view showing steel, 'T' section stanchions and the ventilation system



Photograph 47 9983/22 W

Mezzanine supported on brick columns with a part-glazed partition to the side

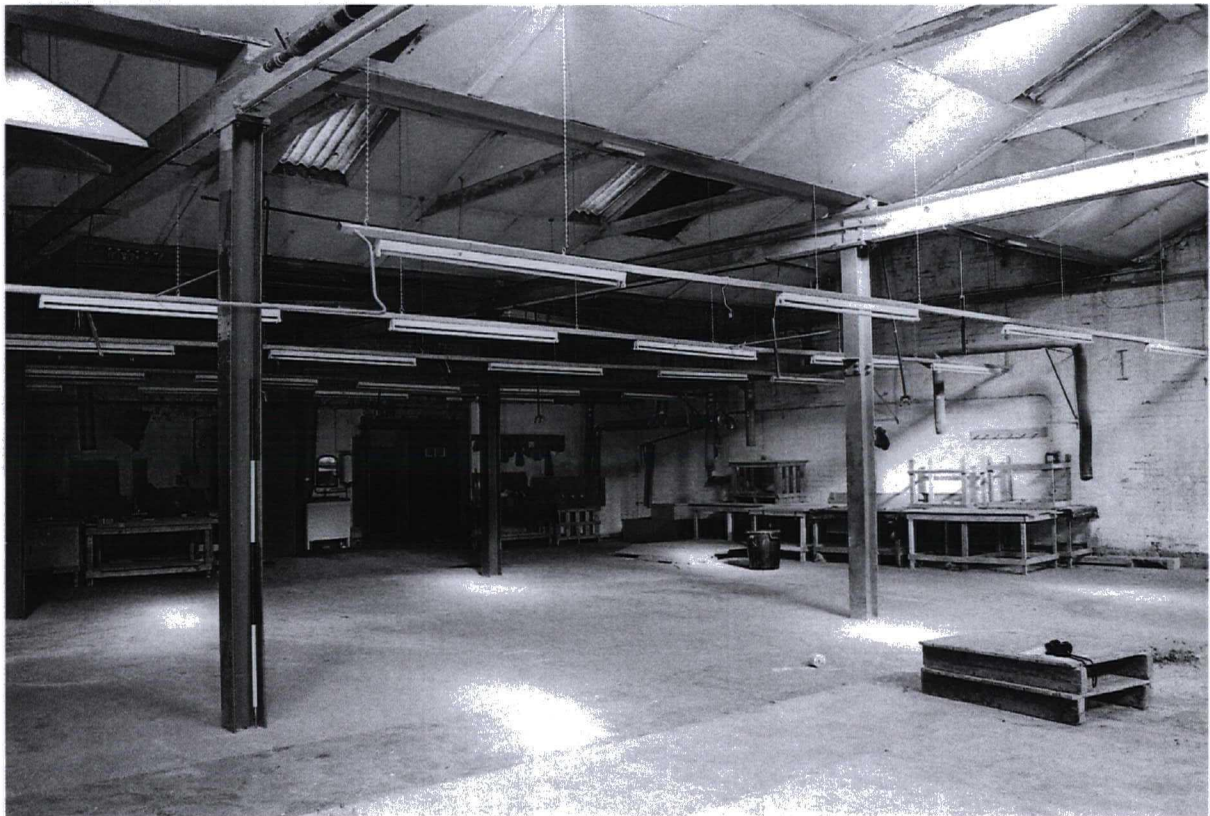


Photograph 48 9983/9 W

A cast-iron column set on a raised stone plinth. The column features a single bolting face for a drive shaft hanger and is supporting a steel, 'I' section beam

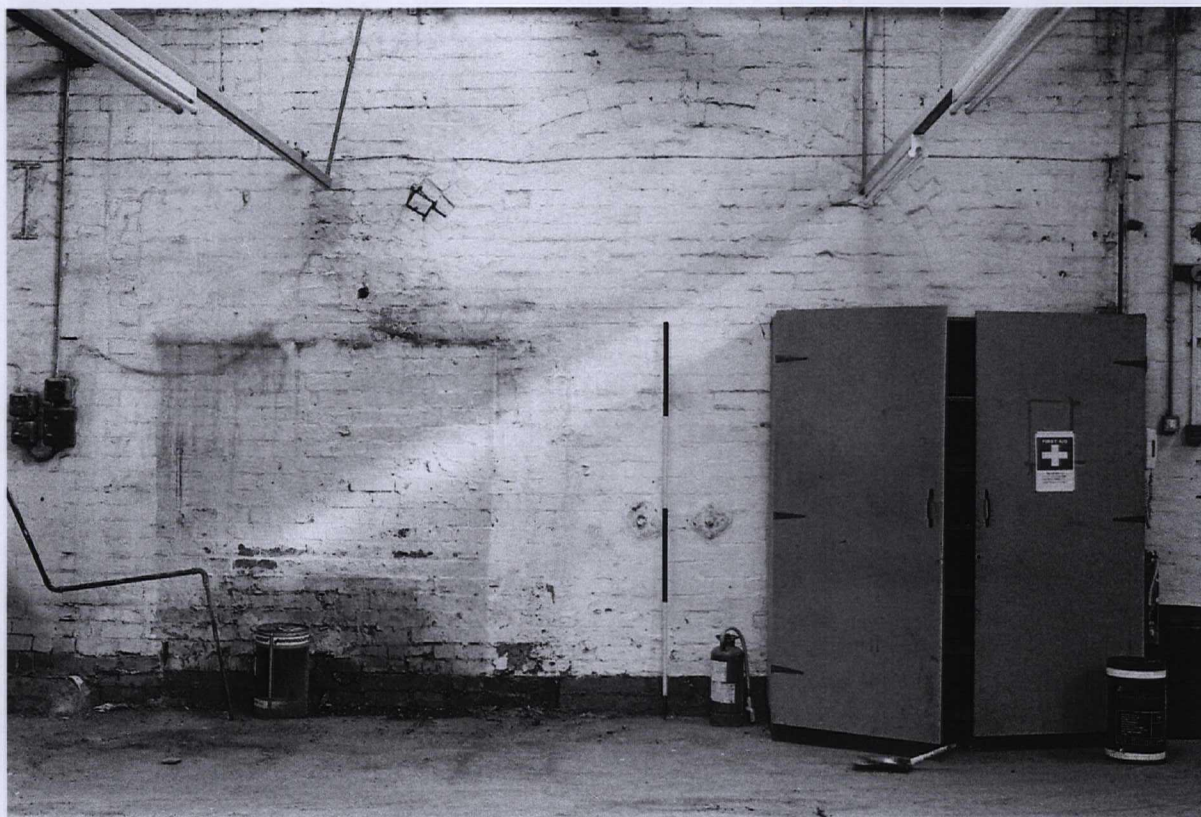


Photograph 49 9983/14 NW  
Mezzanine store supported on steel stanchions



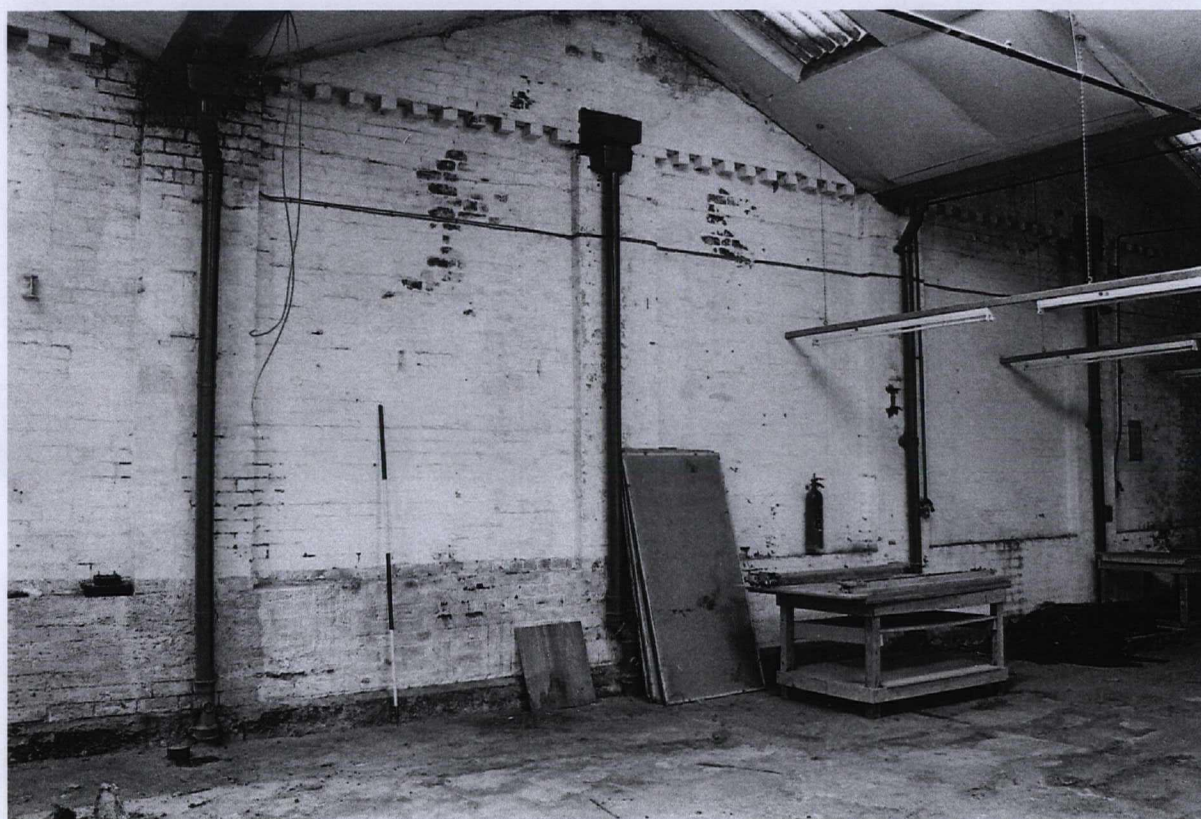
Photograph 50 9983/12 SW  
Steel stanchions supporting steel beams





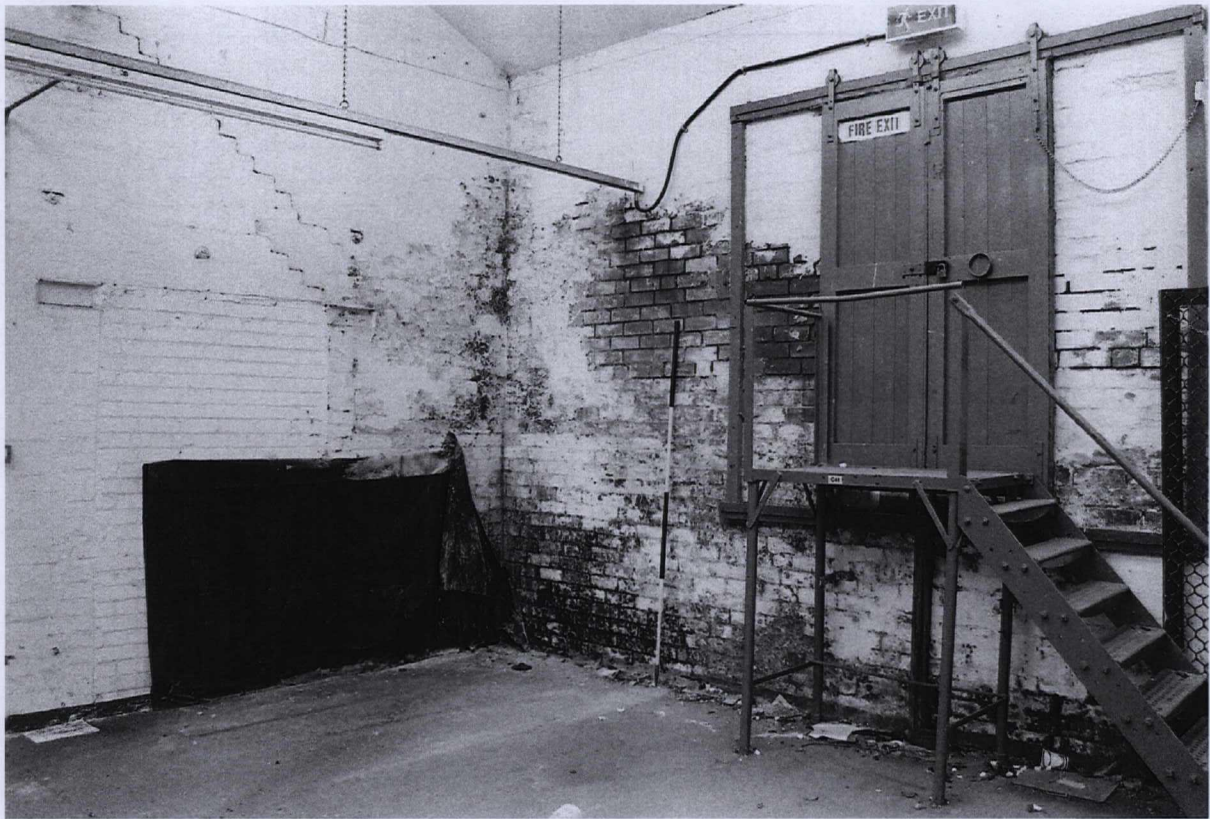
Photograph 51 9983/10 W

A small bricked-up opening truncating a previously bricked-up, segmental-arched opening. Note the twin passers plates



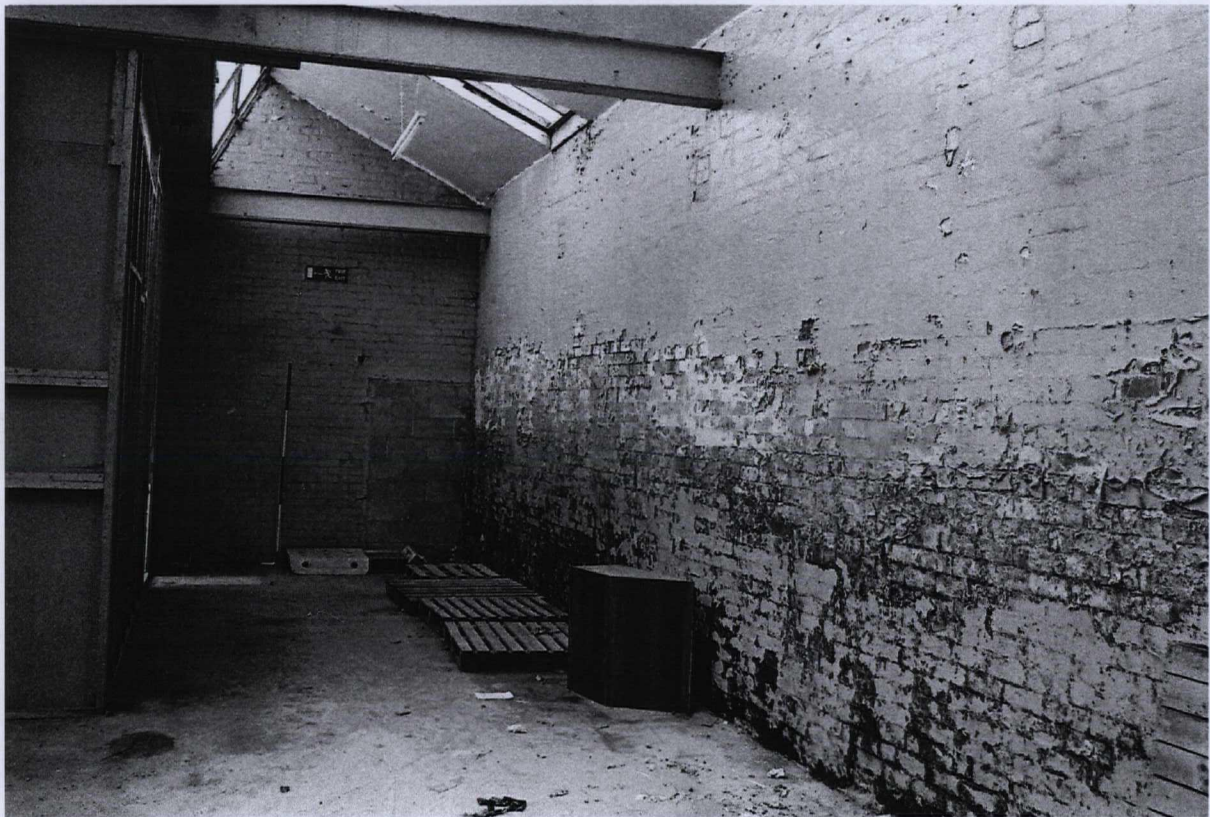
Photograph 52 9983/11 NE

Cast-iron fall pipes draining the valley gutters



Photograph 53 9983/4 NW

Brick-blocked opening to the left with raised fire door to the right

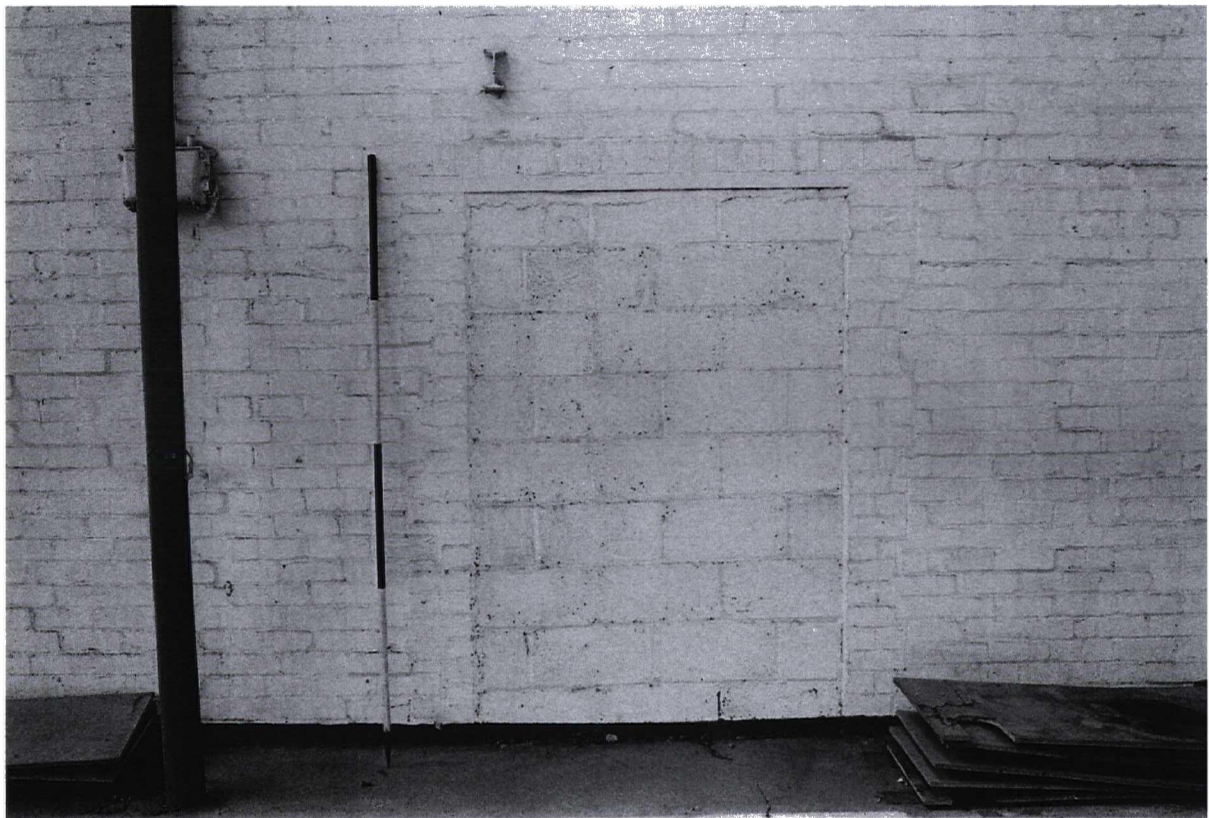


Photograph 54 9984/37 W

Breeze-block blocked door in an earlier brick wall



Photograph 55 9983/1 S  
General view showing cast-iron columns supporting steel beams



Photograph 56 9984/35 W  
Breeze-block blocked doorway



Photograph 57 9984/30 E  
Cast-iron column supporting steel beams



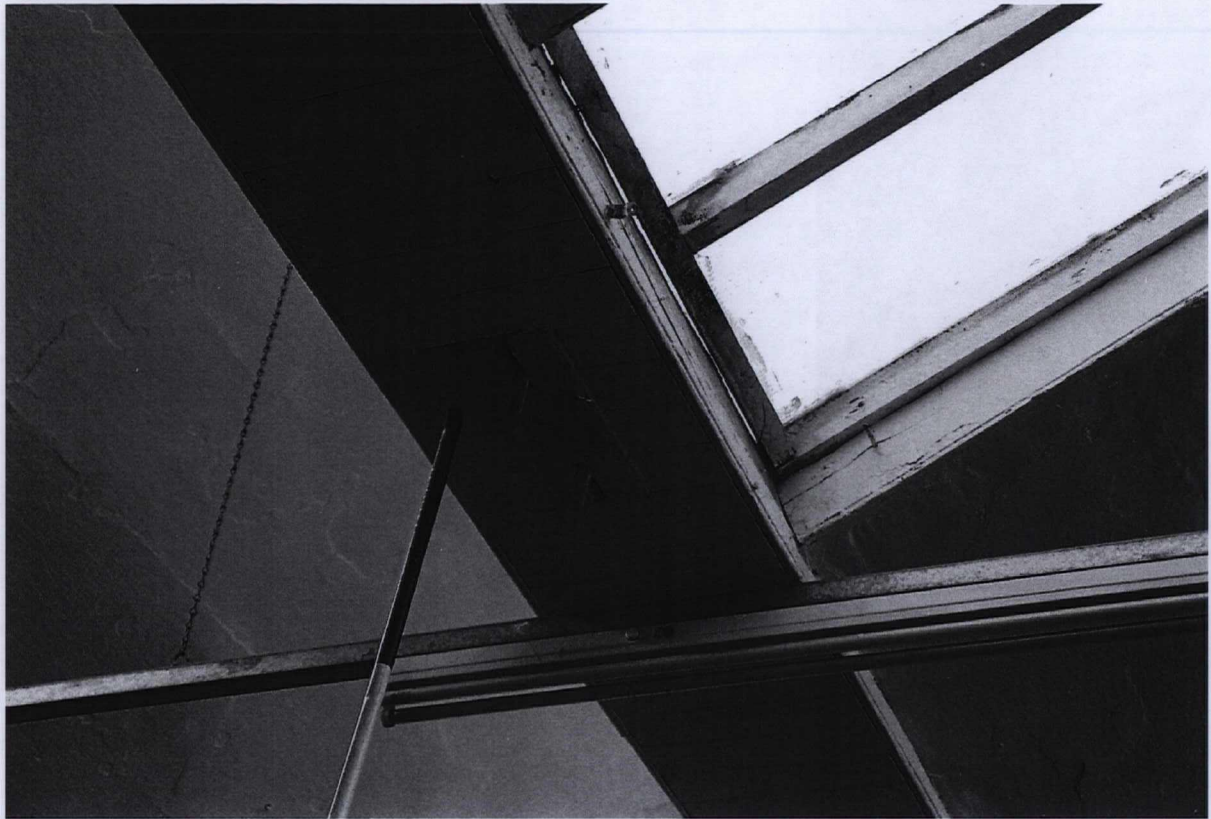
Photograph 58 9984/29 NE  
Breeze-block wall dividing the adjacent property



Photograph 59 9984/28 S  
A blocked, segmental arched, opening with a later doorway installed



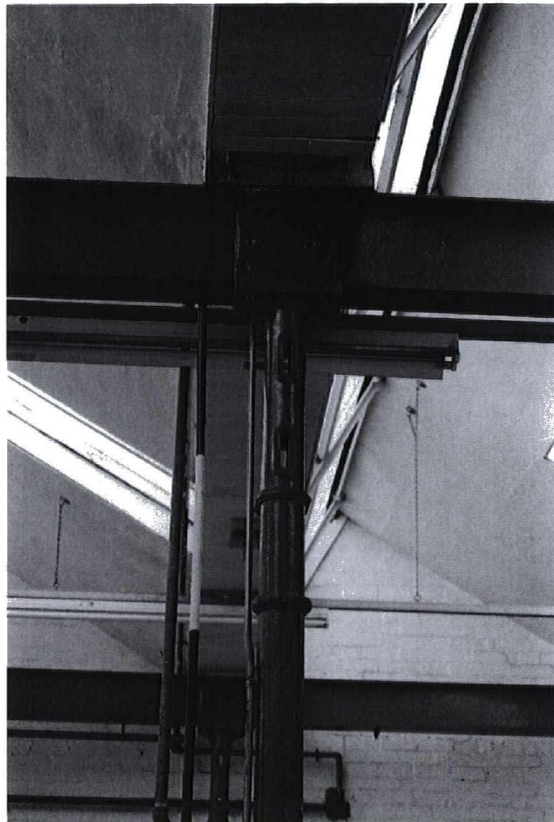
Photograph 60 9983/3 NW  
General view showing cast-iron columns and a later partitioned wall



Photograph 61 9984/32 NW  
Former position of a drive shaft hanger



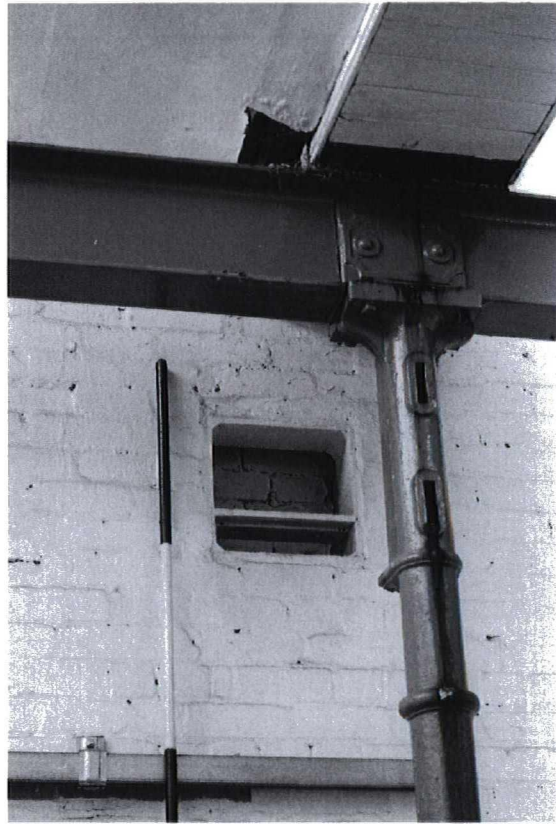
Photograph 62 9984/36 N  
View showing cast-iron columns and roof-lights. Note the internal partition on the left



Photograph 63 9984/31 W  
Detail of a column head



Photograph 64 9984/34 S  
View showing two small doorways and a large, segmental-arched, blocked opening



Photograph 65 9984/33 NW  
Blocked cast-iron wall box

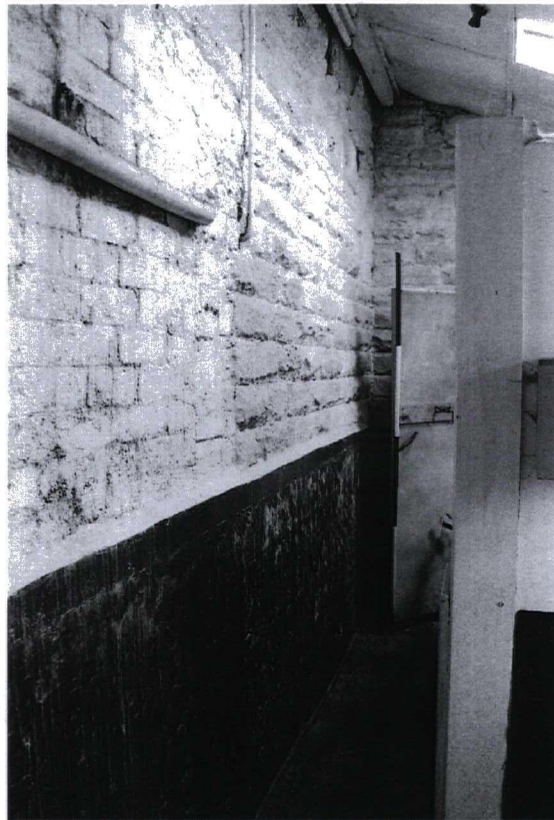


Photograph 66 9983/5 N  
Partitioned area of a former open shed

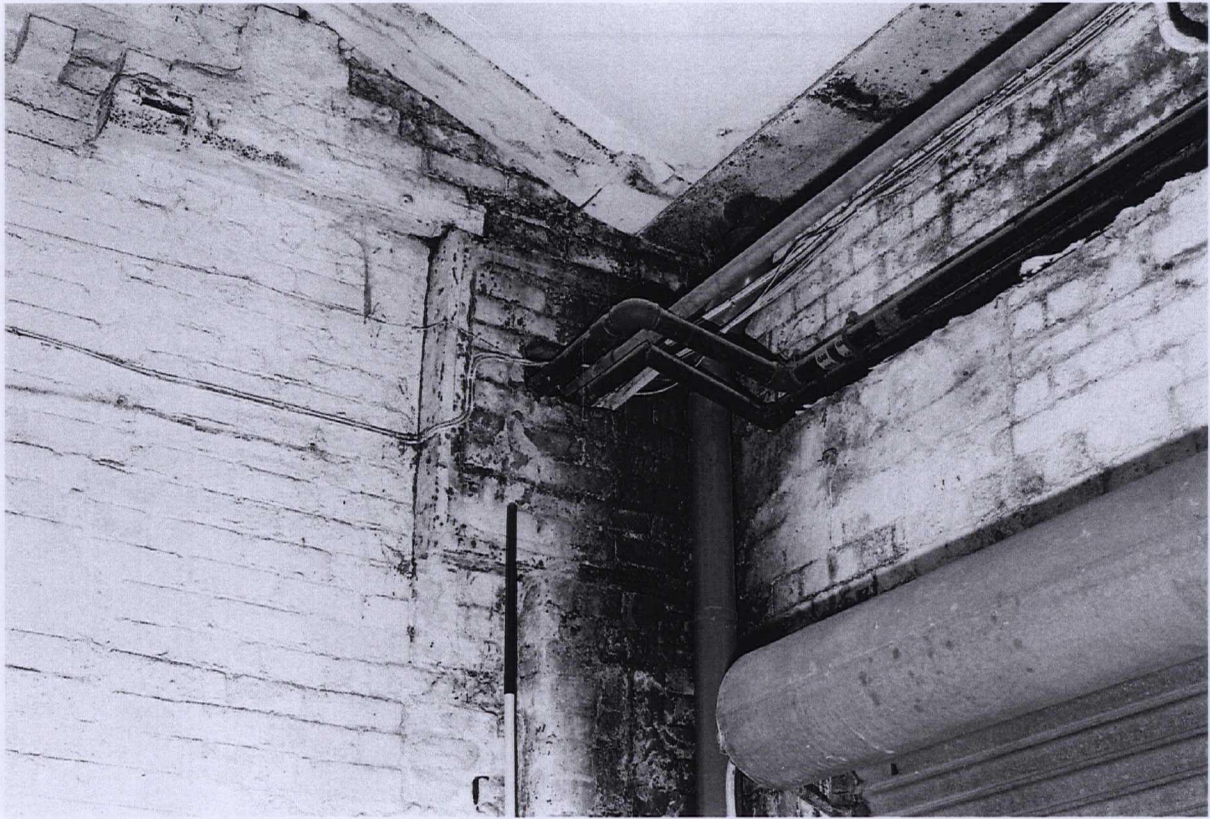




Photograph 67 9983/6 SW  
Large double door with a smaller door set within



Photograph 68 9983/2 E  
Interior of a later toilet block



Photograph 69 9983/18 E  
Large brick-blocked cast-iron wall-box



Photograph 70 9983/17 SE  
A cast-iron bracket supporting the side gutter