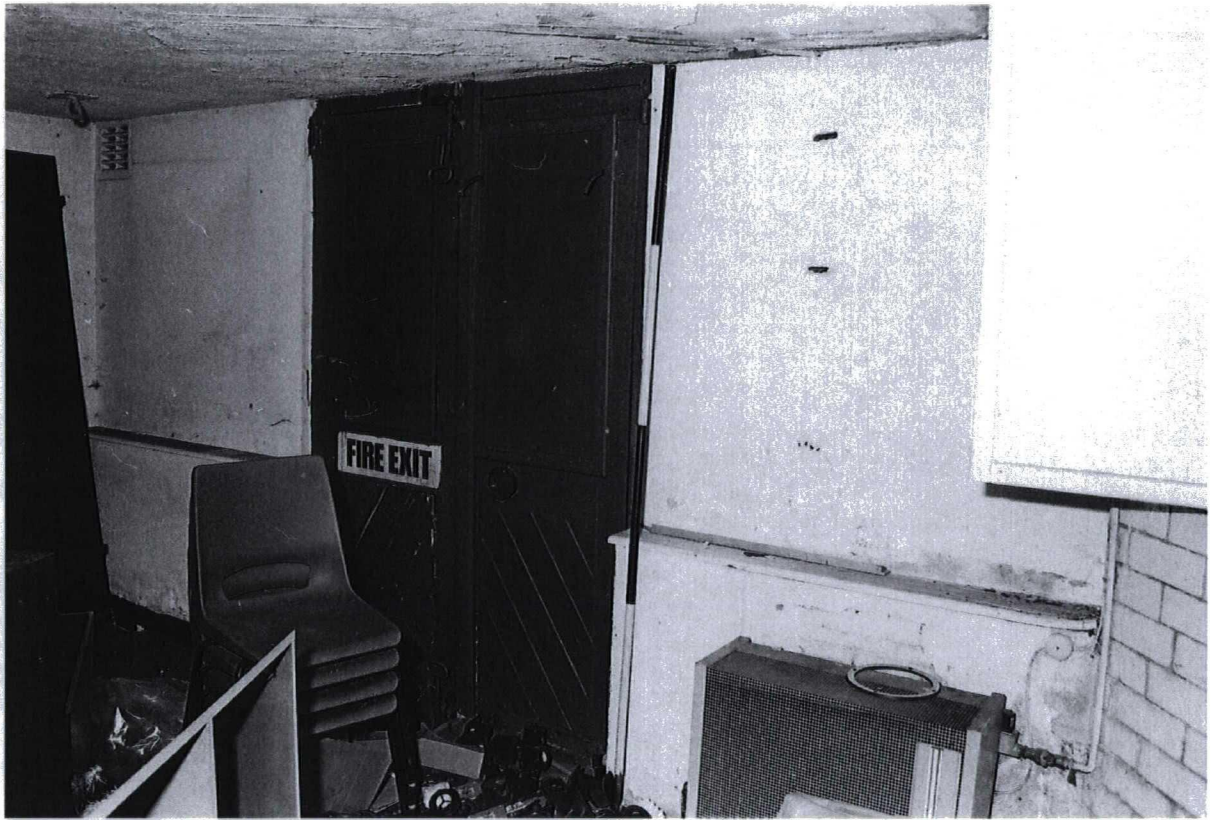




Photograph 71 9983/36 SE
Large side-opening fire door with later breeze-block store room



Photograph 72 9985/29 NW
Concrete machine bed



Photograph 73 9983/32 S
A double-doored fire exit



Photograph 74 9983/31 N
Former office with hidden stair



Photograph 75 9983/28 S
Wooden stairs leading to the first floor



Photograph 76 9983/27 W
Stone stairways leading to the male/female toilets



Photograph 77 9983/26 E
Cast stanchion with 'Y' shaped head



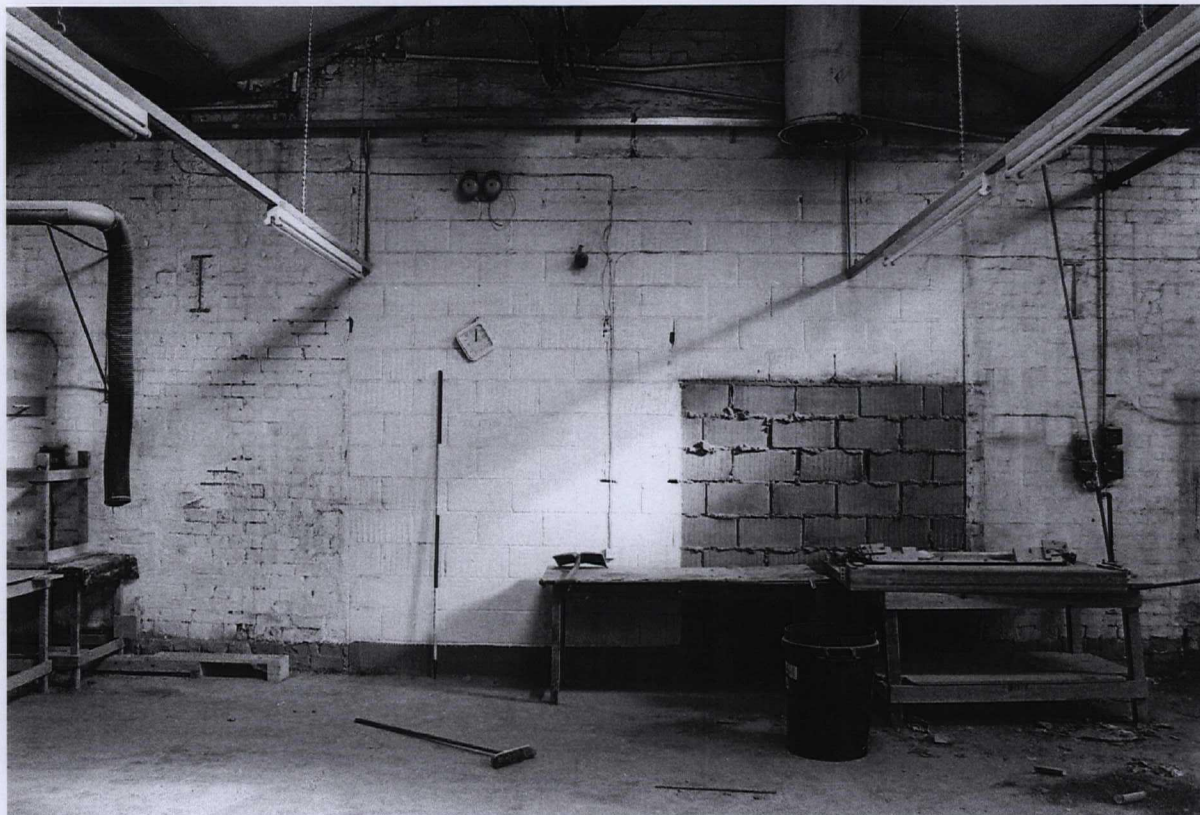
Photograph 78 9983/19 N
Former position of a drive shaft hanger



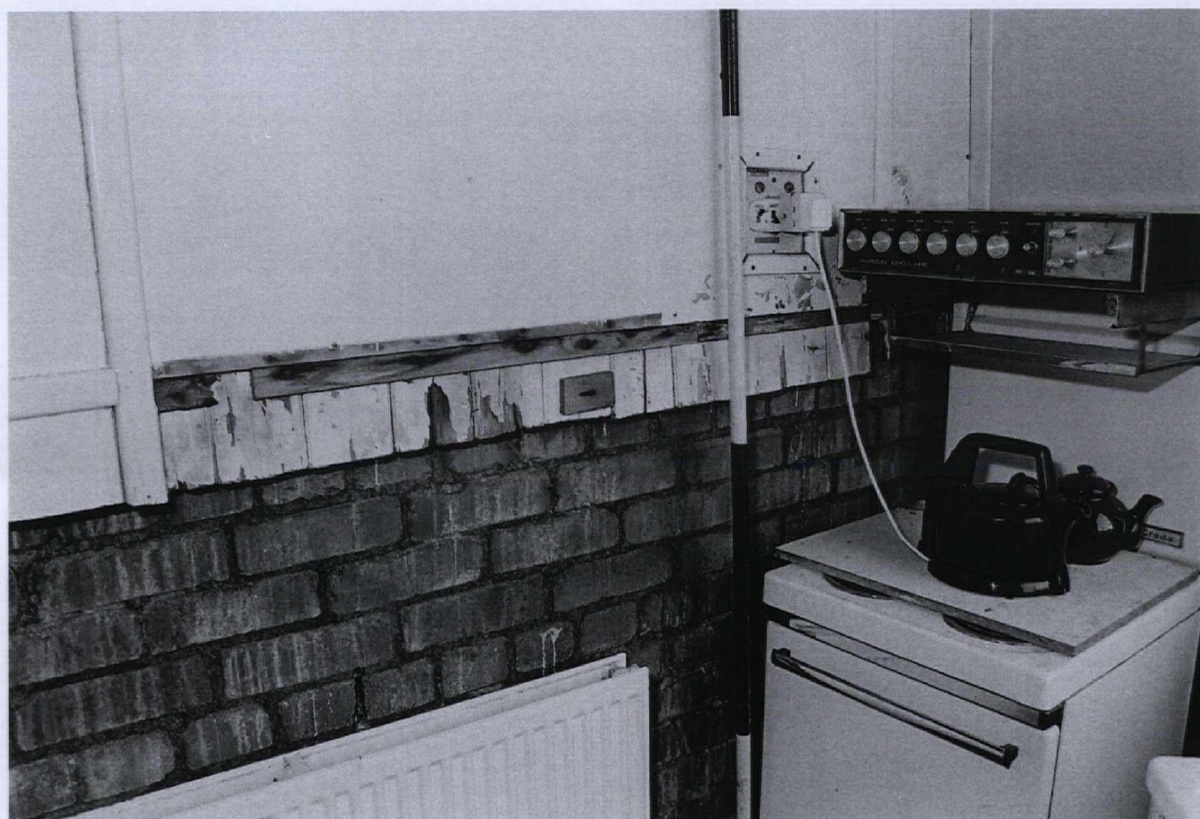
Photograph 79 9983/16 S
View showing steel stanchions supporting riveted, steel, 'I' section beams



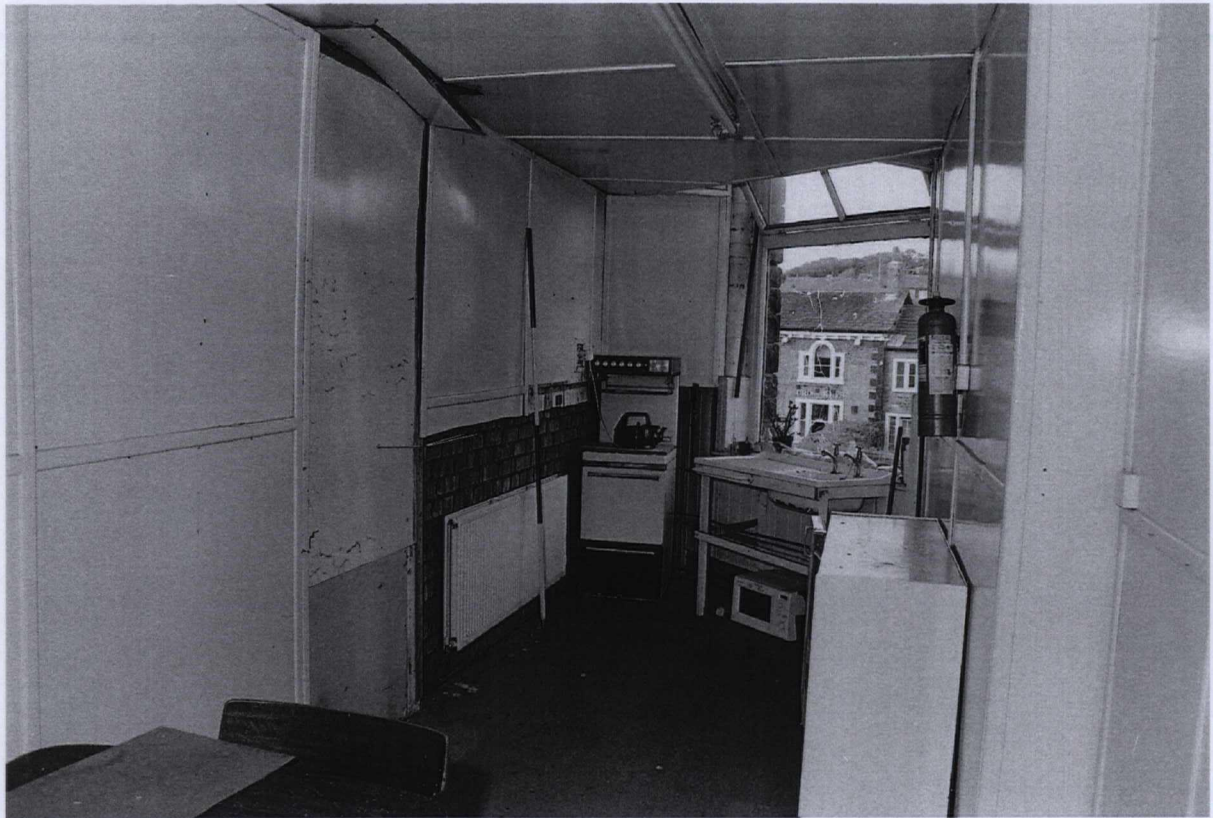
Photograph 80 9983/21 W
Roof trusses and supporting detail



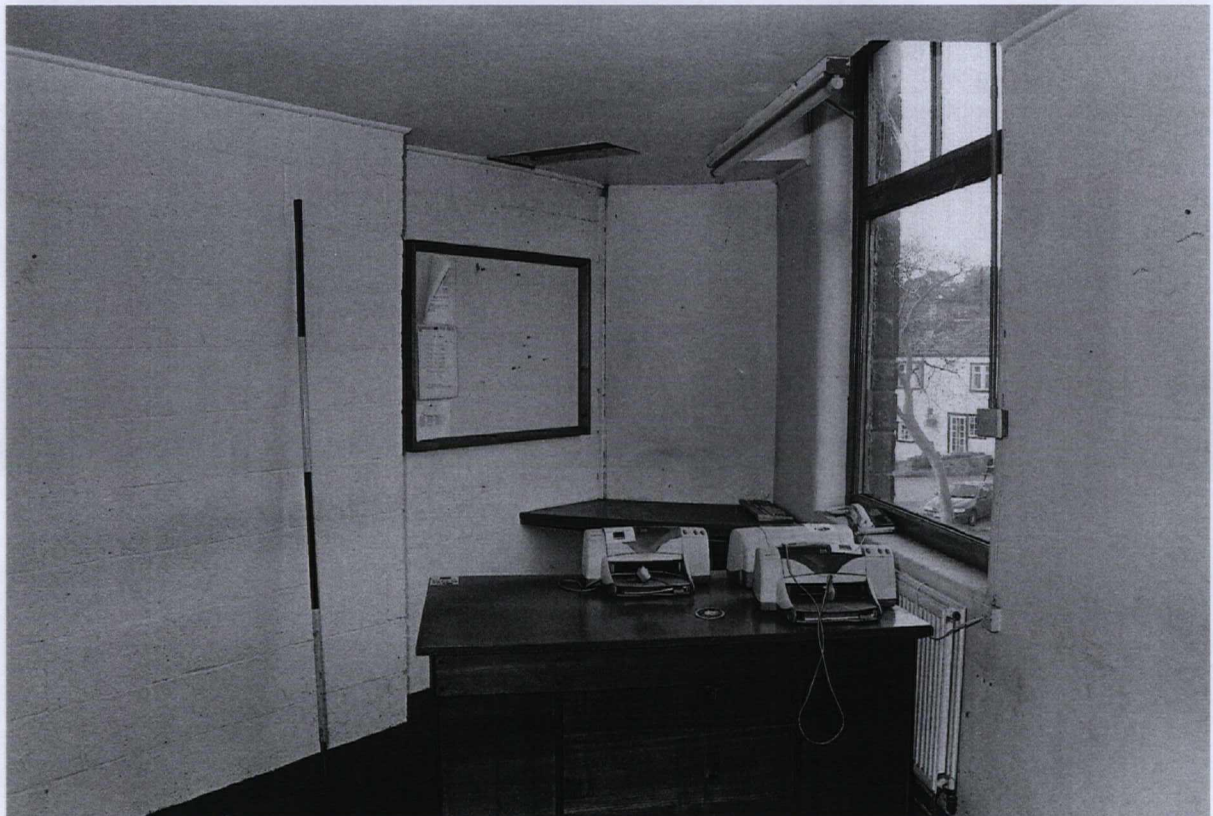
Photograph 81 9983/13 W
Large breeze-block blocked opening within the earlier brick wall



Photograph 82 9985/12 SE
A corner of the first-floor area showing a brick wall



Photograph 83 9985/13 S
View of the same area with an external window



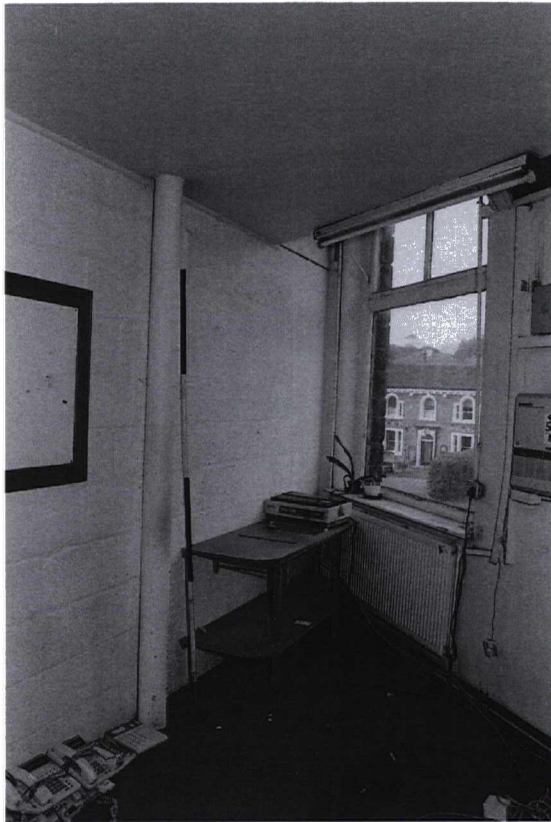
Photograph 84 9985/11 SE
View of a modern office area showing the changes to the original layout



Photograph 85 9985/14 SW
Two doorways within an internal partition



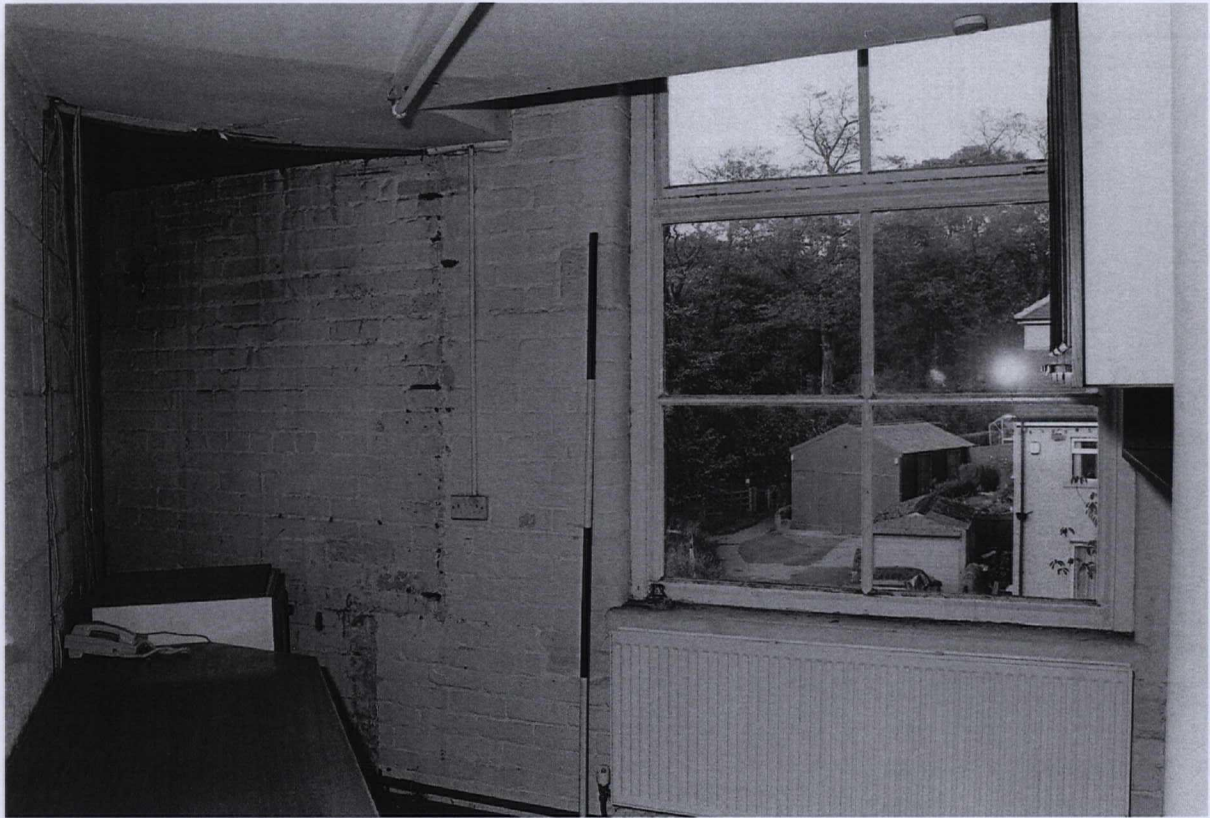
Photograph 86 9985/9 NW
A cast-iron column encased in modern office partitions



Photograph 87 9985/10 SE
A cast-iron column encased in modern office partitions



Photograph 88 9985/8 SW
A two-over-three top-opening casement window



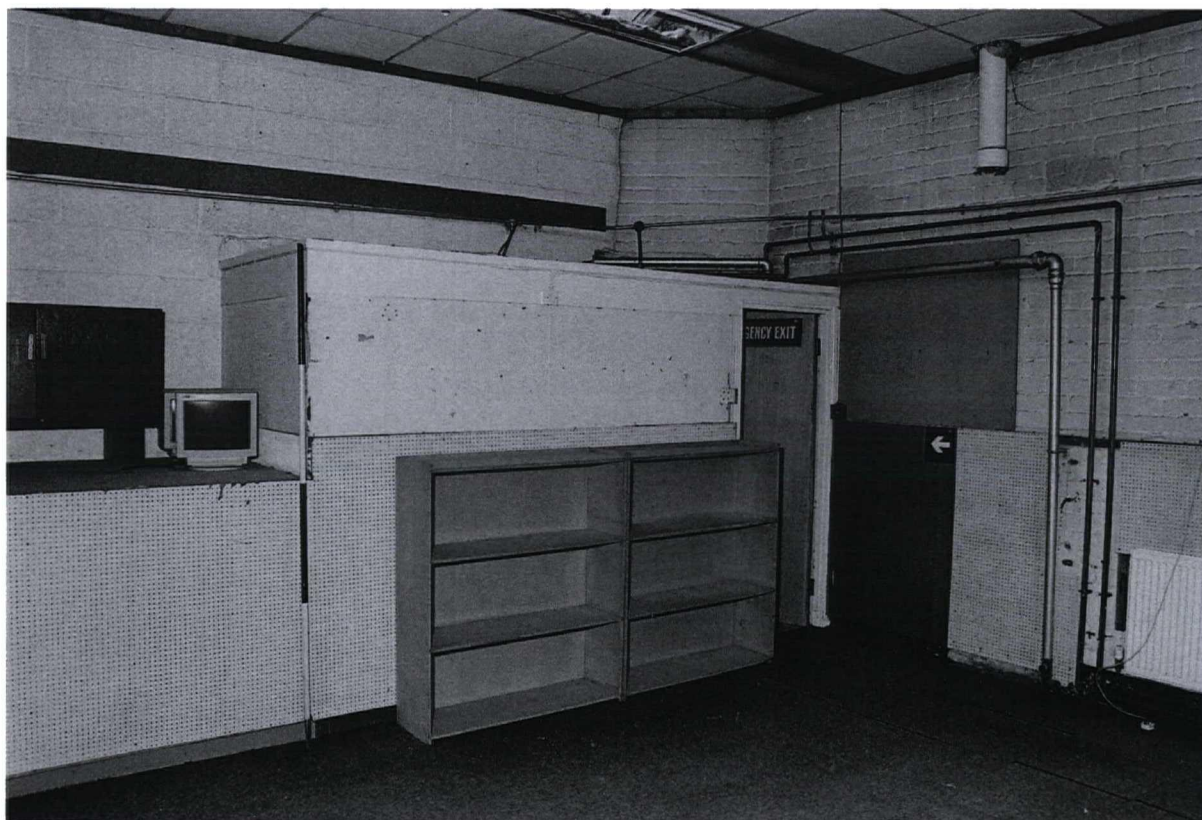
Photograph 89 9985/7 SW
A two-over-four top opening casement window



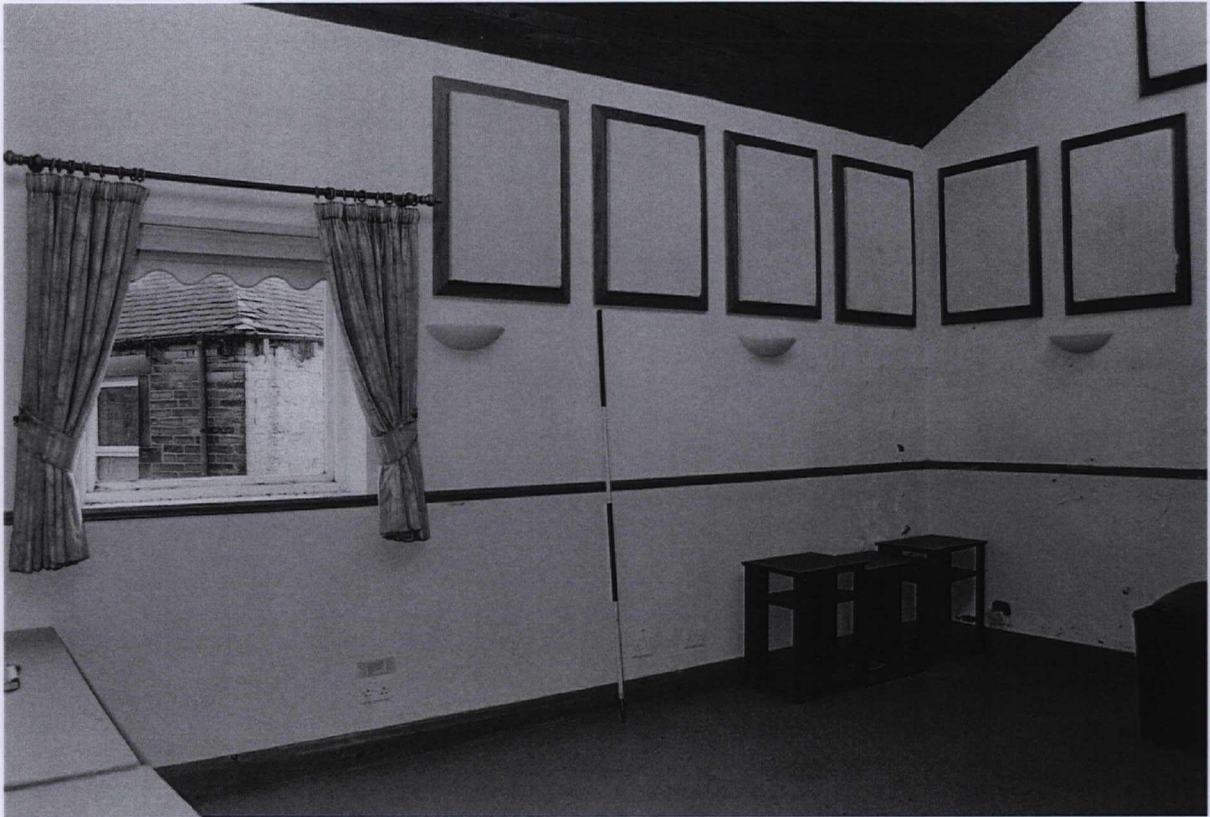
Photograph 90 9985/6 SW
Detail of a casement window



Photograph 91 9985/18 NE
A pair of double side-opening casement windows



Photograph 92 9985/19 SW
An internal, wooden substructure



Photograph 93 9985/16 NE
Internal decoration including rectangular panelling and a dado rail



Photograph 94 9985/15 SW
Lift doors



Photograph 95 9985/17 NW
General view of a modern office space

Bibliography

Giles, C., and Goodall, I.H., 1992, *Yorkshire Textile Mills 1770-1930*

<http://www.skiptonweb.co.uk/history/mills.asp>

<http://www.rowleycollection.co.uk/photo.asp>

Kelly, 1881, *Directory of the West Riding of Yorkshire*

Kelly, 1908, *Directory of the West Riding of Yorkshire*

Kelly, 1917, *Directory of the West Riding of Yorkshire*

Kelly, 1920, *Directory of the West Riding of Yorkshire*

Kelly, 1927, *Directory of the West Riding of Yorkshire*

Post Office, 1861, *Directory of the West Riding of Yorkshire*

White, W., 1894, *Directory of the City of Leeds followed by a trades directory of the whole of the clothing district*

Cartographic Sources

Ordnance Survey, 1854, County Series 6 inch map sheet Yorkshire 168 (Surveyed 1850)

Ordnance Survey, 1909, County Series 25 inch map sheet Yorkshire 168.5 (Re-Surveyed 1889-90, Revised 1907)

Ordnance Survey, 1946, County Series 25 inch map sheet Yorkshire 168.5 (Re-Surveyed 1889-90, Revised 1938)

SNY12005

Figure 6 not scanned, see main report