

PLATE 6



Trial Hole No.2, the recently excavated geological test pit.

PLATE 7



Trial Hole No.2, the profile of a medieval ditch, as revealed in the south facing section of the excavation.

SITE NAME 4 FISHERGATE RIPON AREA 2 YEAR 1993
 CONTEXT 2009 COORDS 31190/71320 LEVEL 38. / 312
 TYPE LAYER SHAPE TRIANGULAR PROFILE ---
 LONG 240 cm WIDE 200 cm DEEP/HIGH ---

METHOD HAND/TRAPEZ CONDITIONS DRY / GOOD LIGHT
 SOIL SAND COLOUR ORANGE PINK MUNSELL 2.5YR 5/6

INCLUSIONS ---

DESCRIPTION A SUBSTANTIAL LAYER OF WELL COMPACTED, FINE SAND WITH NO INCLUSIONS. THE LAYER WAS REDUCED TO 180 cm BENEATH THE PRESENT GROUND LEVEL, WITHIN THE GEOLOGICAL TEST PIT, CUT 2003. NO VARIATIONS WERE NOTED WITHIN THE LAYER. NO FINDS WERE RECOVERED FROM THIS LAYER. THE LAYER HAD BEEN CUT BY 2008, 2003, 2005.

CONTEXT 2 N

BELOW 2004 SEALED BY ---

SAME AS 3016, 1032 PART OF ---

BUTTS --- GROUPED WITH ---

ABOVE --- SEALS ---

CUTS --- CUT BY 2008, 2003, 2005

FILL OF --- FILLED BY ---

POT N METAL N BONE N STONE N FLINT N ORGANIC N OTHER N SAMPLE N

CLASS/INTERPRETATION NATURAL SURFACE GEOLOGY.

PLAN NOS 8, / FIG N° 14, 15 SECTION NOS 17 / FIG N° 16

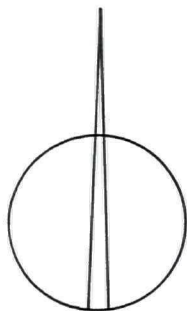
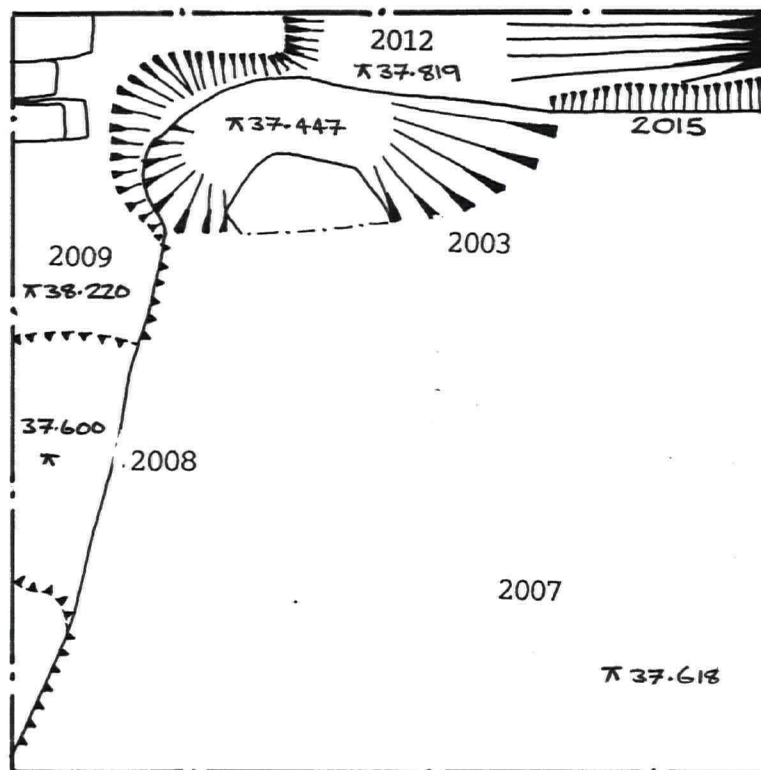
PHOTOS 1/29-30 2/1-4

DUG BY G.K. SUPERVISOR KJC DATED 130893

FIGURE 15

TRIAL HOLE NO.2: PLAN

4 FISHERGATE
RIPON
AUGUST 1993



Scale 1:20



Metres

ARCHAEOLOGICAL WATCHING BRIEF - CONTEXT SHEET 1

SITE NAME 4 FISHERGATE, Ripon. AREA 2 YEAR 1993
 CONTEXT 2010 COORDS 31190, 71320 LEVEL 38, 739
 TYPE LAYER SHAPE SUB RECTANGULAR PROFILE —
 LONG 200 cm WIDE 20 cm DEEP/HIGH 26 cm

METHOD HAND/SHOVEL CONDITIONS DRY / GOOD LIGHT
 SOIL ILTY SAND LOAM COLOUR BLUE BLACK MUNSELL 2.5YR 2.5/0

INCLUSIONS ROOT, WATER WORN PEBBLE,

DESCRIPTION A LAYER OF FRIABLE LOAM, GARDEN SOIL WITH A RELATIVELY HIGH QUANTITY OF ROOT INCLUSION ASSOCIATED WITH THE OVERGROWN NATURE OF THE YARD. THE LAYER WAS ONLY IDENTIFIED WITHIN THE SOUTH FACING SECTION OF THE TRIAL HOLE, WHERE THE LAYER BUTTS TO THE YARD SURFACE 200

CONTEXT 2..N

BELOW SEALED BY
 SAME AS PART OF
 BUTTS 2000 GROUPED WITH
 ABOVE 2004 SEALS
 CUTS CUT BY
 FILL OF FILLED BY

POT ..N METAL ..N BONE ..N STONE ..N FLINT ..N ORGANIC ..N OTHER ..N SAMPLE ..N

CLASS/INTERPRETATION A LAYER TOPSOIL, IDENTIFIED TO THE IMMEDIATE NORTH OF THE TRIAL HOLE.

PLAN NOS SECTION NOS 17 / FIG N° 16

PHOTOS — 2/1-4

DUG BY G.K. SUPERVISOR K.J.C DATED 13/08 93

ARCHAEOLOGICAL WATCHING BRIEF - CONTEXT SHEET 1

SITE NAME 4 FISHERGATE, RIPON AREA 2 YEAR 1993
 CONTEXT 2011 COORDS 31190, 71320 LEVEL 38.566
 TYPE LAYER SHAPE SQUARE PROFILE —
 LONG 200cm WIDE 200cm DEEP/HIGH 17cm

METHOD HAND/TROWEL CONDITIONS DRY / OVERCAST
 SOIL SAND COLOUR ORANGE MUNSELL 2.5YR5/6

INCLUSIONS MORTAR FLECKING, WATER WORN PEBBLE

DESCRIPTION A WELL COMPACTED LAYER OF ORANGE SAND, WITH A LOW QUANTITY OF INCLUSIONS. THE SURFACE IS RELATIVELY LEVEL THE LAYER HAS BEEN DISCOLOURED IN PLACES BY THE EXPOSURE OF THIS LAYER TO 2002.

CONTEXT 2 N

BELOW 2004, 2002 SEALED BY

SAME AS PART OF

BUTTS GROUPED WITH

ABOVE 2007, 2012 SEALS 2013

CUTS CUT BY 2003, 2005

FILL OF FILLED BY

POT N METAL N BONE N STONE N FLINT N ORGANIC N OTHER N SAMPLE N

CLASS/INTERPRETATION A SUBSTANTIAL LAYER OF SAND, ~~AND~~ COMPACTED FOR THE BEDDING OF THE BRICK YARD SURFACE 2004

PLAN NOS 7 / FIG N° 13 SECTION NOS 17 / FIG N° 16

PHOTOS 1/18-22

DUG BY G.K. SUPERVISOR K.J.C. DATED 12/03/93

SITE NAME 4 FISHERGATE, RIPON AREA 2 YEAR 1993
 CONTEXT 2012 COORDS 31190 71320 LEVEL /
 TYPE FILL SHAPE — PROFILE U SHAPE
 LONG — WIDE 148 cm DEEP/HIGH 69 cm

METHOD HAND/SHOVEL CONDITIONS DRY / GOOD LIGHT
 SOIL SANDY SILT COLOUR MEDIUM BROWN MUNSELL 5YR 4/3

INCLUSIONS WATER WORN PEBBLE, WATER WORN COBBLE, LIME, CHARCOAL

DESCRIPTION THE SINGLE FILL OF A BROAD U SHAPED CUT, 2008 THE FILL CONTAINS A RELATIVELY HIGH QUANTITY OF INCLUSIONS WITH A CONCENTRATION OF WATER WORN COBBLES TO THE BASE OF THE DEPOSIT. THE FILL ALSO CONTAINS A LENS OF LIME. THE

CONTEXT 2 N

BELOW 2011, 2013 SEALED BY

SAME AS PART OF

BUTTS GROUPED WITH

ABOVE SEALS

CUTS CUT BY 2014, 2003, 2015

FILL OF 2008 FILLED BY

POT N METAL N BONE N STONE N FLINT N ORGANIC N OTHER N SAMPLE N

CLASS/INTERPRETATION THE SINGLE FILL OF A BROAD DITCH LIKE CUT.

PLAN NOS 16 / FIG NO 15 SECTION NOS 17 / FIG NO 16, 15

PHOTOS 2/15-4

DUG BY G.K. SUPERVISOR KJC DATED 13 08 93

ARCHAEOLOGICAL WATCHING BRIEF - CONTEXT SHEET 1

SITE NAME 4 FISHERGATE, RIBON AREA Z YEAR 1993
 CONTEXT 2013 COORDS 3119071320 LEVEL 38.1219
 TYPE FILL SHAPE — PROFILE U SHAPE
 LONG — WIDE 145cm DEEP/HIGH 33cm

METHOD HAND/SHOVEL CONDITIONS DRY/GOOD LIGHT

SOIL SILTY CLAYEY LOAM COLOUR LIGHT GREY BROWN MUNSELL 10YR 4/2

INCLUSIONS WATER WORN PEBBLES, LIME, CHARCOAL, WATER WORN COBBLE

DESCRIPTION THE WELL COMPACTED SINGLE FILL OF A SHALLOW U SHAPED CUT, CONTEXT 2014. THE FILL WAS ONLY IDENTIFIED WITHIN THE SOUTH FACING SECTION OF THE TRIAZ HOLE, HAVING BEING CUT AND RECENTLY DISTURBED BY THE GEOLOGICAL TEST PIT, CONTEXT 2003

CONTEXT 2...N

BELOW ~~2011~~ SEALED BY 2011

SAME AS PART OF

BUTTS GROUPED WITH

ABOVE 2012 SEALS

CUTS CUT BY 2003

FILL OF 2014 FILLED BY

POT N... METAL N... BONE N... STONE N... FLINT N... ORGANIC N... OTHER N... SAMPLE N...

CLASS/INTERPRETATION THE FILL OF A SECONDARY CUT WITHIN AN EARLIER LARGER 'DITCH' LIKE CUT.

PLAN NOS SECTION NOS 17/FIG. N° 16

PHOTOS 2/1-4

DUG BY G.K. SUPERVISOR RJC DATED 13 08 93

ARCHAEOLOGICAL WATCHING BRIEF - CONTEXT SHEET 1

SITE NAME 4, FISHERGATE, RIPON AREA 2 YEAR 1993
 CONTEXT 2014 COORDS 31190, 71320 LEVEL 38. / 219
 TYPE CUT SHAPE — PROFILE SHALLOW U
 LONG — WIDE 145cm DEEP/HIGH 33cm
 METHOD HAND/SHOVEL CONDITIONS DRY / GOOD LIGHT
 SOIL — COLOUR — MUNSELL —

INCLUSIONS —
 DESCRIPTION A SHALLOW U SHAPED CUT, CUT INTO THE UPPER LEVEL OF THE FILL OF AN EARLIER 'DITCH' LIKE CUT, 2008 THE FEATURE WAS IDENTIFIED IN ONLY THE SOUTH FACING SECTION OF THE TRIAL HOLE, HAVING BEEN CUT AND DISTURBED BY THE EXCAVATION OF THE GEOLOGICAL TEST PIT, 2003

CONTEXT 2 N

BELOW SEALED BY
 SAME AS PART OF
 BUTTS GROUPED WITH
 ABOVE SEALS
 CUTS 2012 CUT BY 2003
 FILL OF FILLED BY 2013

POT N METAL N BONE N STONE N FLINT N ORGANIC N OTHER N SAMPLE N

CLASS/INTERPRETATION A SHALLOW U SHAPED CUT, A POSSIBLE RE CUT OF AN EARLIER AND LARGER DITCH LIKE CUT.

PLAN NOS — SECTION NOS 17 / FIG NO 16
 PHOTOS 2/1-4

DUG BY G.K. SUPERVISOR K.J.C. DATED 130893

ARCHAEOLOGICAL WATCHING BRIEF - CONTEXT SHEET 1

SITE NAME 4 FISHERGATE, RIPON AREA 2 YEAR 1993
 CONTEXT 2015 COORDS 3.1190 / 7.1320 LEVEL 37. / 720
 TYPE CUT SHAPE LINEAR PROFILE —
 LONG 28 cm. WIDE — DEEP/HIGH 15 cm
 METHOD Hand/Trowel CONDITIONS Dry / GOOD LIGHT
 SOIL — COLOUR — MUNSELL —

INCLUSIONS —

DESCRIPTION A SHORT LENGTH OF THIS CUT WAS IDENTIFIED IN THE NORTH EASTERN CORNER OF THE TRIAL HOLE, THE CUT HAD BEEN DISTURBED AND CUT BY THE RECENT GEOLOGICAL TEST PIT 2003. THIS DISTURBANCE HAD OBLITERATED THE RELATIONSHIP BETWEEN THIS CUT AND THE "DITCH" LIKE CUT 2008, BUT IT IS SUSPECTED THAT IT POST DATES THE EARLIER CUT.

CONTEXT 2.N

BELOW — SEALED BY —
 SAME AS — PART OF —
 BUTTS — GROUPED WITH —
 ABOVE — SEALS —
 CUTS 2008, 2012 CUT BY 2003,
 FILL OF — FILLED BY 2007

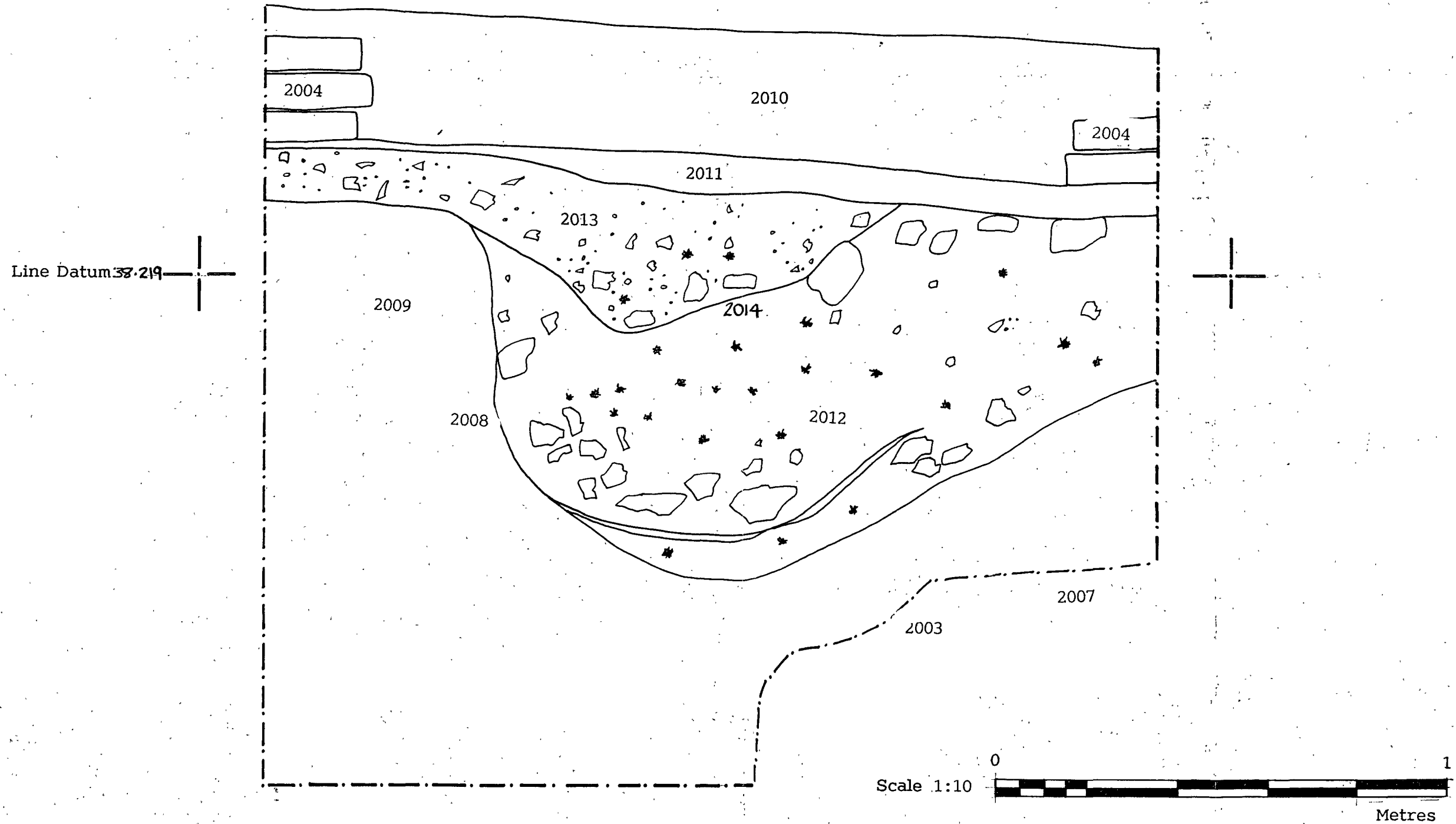
POT N METAL N BONE N STONE N FLINT N ORGANIC N OTHER N SAMPLE N

CLASS/INTERPRETATION THE FULL EXTENT, FORM AND CHARACTER OF THIS CUT COULD NOT BE DETERMINED FROM THESE EXCAVATIONS.

PLAN NOS 16 / FIG N° 15 SECTION NOS £
 PHOTOS 2/1-4

DUG BY G.K. SUPERVISOR K.J.C DATED 13/08/93

4 FISHERGATE
RIPON
AUGUST 1993



TRIAL HOLE NO 3

Type:	Trial Hole:Hand Excavated
Planform:	Rectangular
Length:	200 cm
Width:	100 cm
Depth:	160 cm
Area:	2 sq m
NGR:	SE 31190 71320
Context Nos:	3000 - 3018
Fig Nos:	2, 17 - 21
Plate Nos:	8 - 9

ARCHAEOLOGICAL WATCHING BRIEF - CONTEXT SHEET 1

SITE NAME 4 FISHERGATE, RIPON. AREA 3 YEAR 1993
 CONTEXT 3000 COORDS 31190, 71320 LEVEL 39. 082
 TYPE LAYER SHAPE RECTANGULAR PROFILE _____
 LONG 200cm WIDE 100cm DEEP/HIGH 9cm

METHOD HAND/SPADE CONDITIONS DRY/GOOD LIGHT
 SOIL LOAM. COLOUR DARK BROWN MUNSELL 2.5YR 2.5/0

INCLUSIONS ROOTS, BRICK FRAGMENTS, WATER WORN PEBBLES.

DESCRIPTION A LAYER OF FRIABLE LOAM, GARDEN SOIL, WITH
 A RELATIVELY HIGH QUANTUM OF ROOT INCLUSION, ASSOCIATED
 WITH THE OVERGROWN NATURE OF THE YARD. THE LAYER
 UNBUCATES SLIGHTLY.

CONTEXT 2 N

BELOW _____ SEALED BY _____

SAME AS _____ PART OF _____

BUTTS 3001 GROUPED WITH _____

ABOVE 3002, 3006, 3005 SEALS _____

CUTS _____ CUT BY _____

FILL OF _____ FILLED BY _____

POT N METAL N BONE N STONE N FLINT N ORGANIC N OTHER N SAMPLE N

CLASS/INTERPRETATION A LAYER OF TOP SOIL, FORMING THE
 BORDERS OF A FORMER YARD GARDEN.

PLAN NOS _____ SECTION NOS 18 / FIG NO 21

PHOTOS 1/31

DUG BY GK SUPERVISOR KSC DATED 13 08 93

ARCHAEOLOGICAL WATCHING BRIEF - CONTEXT SHEET 1

SITE NAME 4 FISHERGATE, RIPON. AREA 3 YEAR 1993
 CONTEXT 3001 COORDS 31190, 71320 LEVEL 39, 056
 TYPE 4000 STRUCTURAL SHAPE RECTANGULAR PROFILE —
 LONG — WIDE — DEEP/HIGH 11 cm.
 METHOD HAND CONDITIONS DRY / GOOD LIGHT
 SOIL — COLOUR — MUNSELL —

INCLUSIONS —
 DESCRIPTION A PAVED YARD AREA TO THE REAR OF 4 FISHERGATE
THE PAVED AREA OF SANDSTONE, YORKSHIRE PAVING STONES IS
BUTTED BY THE TOP SOIL OF PREVIOUSLY CULTIVATED
BORDERS.

CONTEXT 2 N

BELOW — SEALED BY —
 SAME AS 1000, 2000 PART OF —
 BUTTS 3000 GROUPED WITH —
 ABOVE — SEALS —
 CUTS — CUT BY —
 FILL OF — FILLED BY —

POT N METAL N BONE N STONE N FLINT N ORGANIC N OTHER N SAMPLE N

CLASS/INTERPRETATION —

PLAN NOS 10 SECTION NOS 18 / FIG NO 21
 PHOTOS 1/31

DUG BY G.K. SUPERVISOR KSC DATED 13/08/93

ARCHAEOLOGICAL WATCHING BRIEF - CONTEXT SHEET 1

SITE NAME 4 FISHERGATE, RIPON AREA 3 YEAR 1993
 CONTEXT 3002 COORDS 31190/71320 LEVEL 38-1932
 TYPE STRUCTURES SHAPE LINEAR PROFILE —
 LONG 100cm WIDE 23cm DEEP/HIGH 5cm
 METHOD HAND/TROWEL CONDITIONS DRY / GOOD LIGHT
 SOIL — COLOUR — MUNSELL —

INCLUSIONS —

DESCRIPTION A LINEAR ARRANGEMENT OF HAND MADE CLAMP BRICKS,
ONE DEEP.
SET SIDE BY SIDE, ALIGNED LENGTHWAYS NORTH SOUTH. THE
ALIGNMENT OF BRICKS IS EAST/WEST. THE SURFACE OF THE
BRICKS ARE ENCRUSTED WITH A PINK YELLOW MORTAR. THE
STRUCTURE IS CONTAINED WITH A CONSTRUCTION TRENCH, 3003
AND IS SURROUNDED BY ^{ITS} FILL 3004.
THE STRUCTURE LIES DIRECTLY BENEATH THE ^{NORTHERN} EDGE OF THE PAVED YARD
3001.

CONTEXT 2 .N

BELOW 3001, 3000 SEALED BY —
 SAME AS — PART OF —
 BUTTS 3004 GROUPED WITH 3006
 ABOVE — SEALS —
 CUTS — CUT BY —
 FILL OF 3003 FILLED BY —

POT .N METAL .N BONE .N STONE .N FLINT .N ORGANIC .N OTHER .N SAMPLE .N

CLASS/INTERPRETATION AN INSUBSTANTIAL BRICK FOUNDATION, ASSOCIATED
WITH WHAT IS SUSPECTED TO BE A BRICK YARD PARTITION WALL 19TH

PLAN NOS 10 / FIG N° 17. SECTION NOS 18 / FIG N° 21

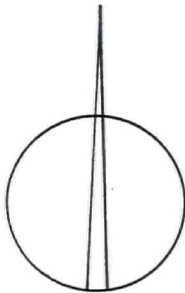
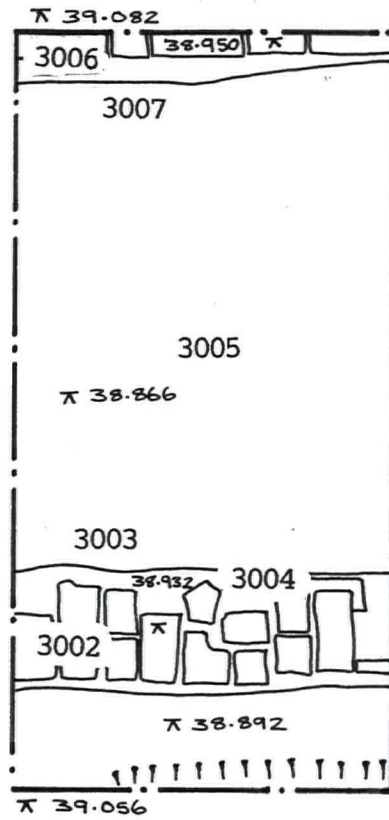
PHOTOS 1/31

DUG BY GTK. SUPERVISOR KJC DATED 13/08/93

FIGURE 17

TRIAL HOLE NO.3: PLAN

4 FISHERGATE
RIPON
AUGUST 1993



ARCHAEOLOGICAL WATCHING BRIEF - CONTEXT SHEET 1

SITE NAME 4 FISHERGATE, R10N AREA 3 YEAR 1993
 CONTEXT 3003 COORDS 31190, 71320 LEVEL 38.1932
 TYPE CUT SHAPE LINEAR PROFILE SHALLOW U
 LONG 100cm WIDE 40cm DEEP/HIGH 6cm

METHOD HAND/TROWEL CONDITIONS DRY / GOOD LIGHT
 SOIL — COLOUR — MUNSELL —

INCLUSIONS —

DESCRIPTION A LINEAR CUT, WITH A SHALLOW PROFILE, EXCAVATED INTO THE LAYER OF SAND 300S, TO CONTAIN THE BRICK WALL FOUNDATIONS 3002.

CONTEXT 2 N

BELOW 3000 SEALED BY
 SAME AS PART OF
 BUTTS GROUPED WITH
 ABOVE SEALS
 CUTS 3005 CUT BY
 FILL OF FILLED BY 3004, 3002

POT N METAL N BONE N STONE N FLINT N ORGANIC N OTHER N SAMPLE N

CLASS/INTERPRETATION A CONSTRUCTION TRENCH FOR THE INSUBSTANTIAL BRICK FOUNDATIONS OF A YARD WALL.

PLAN NOS 10 / FIG N° 17 SECTION NOS 18 / FIG N° 21
 PHOTOS 1/31

DUG BY GK SUPERVISOR KJC DATED 13 08 93

ARCHAEOLOGICAL WATCHING BRIEF - CONTEXT SHEET 1

SITE NAME 4 FISHGATE, RIPON. AREA 3 YEAR 1993
 CONTEXT 3004 COORDS 31190/71320 LEVEL 38.1932
 TYPE FILL SHAPE LINEAR PROFILE SHALLOW U
 LONG 100 cm WIDE 40 cm DEEP/HIGH 6 cm
 METHOD HAND/TROWEL CONDITIONS DRY / GOOD LIGHT
 SOIL SAND COLOUR DARK GREY BROWN MUNSELL 10YR 5/3

INCLUSIONS ROOT.

DESCRIPTION THE SAND FILL OF A CONSTRUCTION TRENCH ASSOCIATED WITH THE BRICK WALL FOUNDATIONS. 3002. THE FILL CONTAINS A RELATIVELY HIGH QUANTITY OF TREE ROOT. THE FILL CONTAINED NO FINDS.

CONTEXT 2 N

BELOW 3000 3001 SEALED BY
 SAME AS PART OF
 BUTTS 3002 GROUPED WITH
 ABOVE SEALS
 CUTS CUT BY
 FILL OF 3003 FILLED BY

POT N METAL N BONE N STONE N FLINT N ORGANIC N OTHER N SAMPLE N

CLASS/INTERPRETATION THE FILL OF A CONSTRUCTION TRENCH ASSOCIATED WITH THE BRICK WALL FOUNDATIONS. 3002.

PLAN NOS 10 / FIG N° 17 SECTION NOS 18 / FIG N° 21

PHOTOS 1/31

DUG BY GK. SUPERVISOR KJC DATED 13/08/93

ARCHAEOLOGICAL WATCHING BRIEF - CONTEXT SHEET 1

SITE NAME 4 FISHERGATE, R10N. AREA 3 YEAR 1993
 CONTEXT 3005 COORDS 31190 71320 LEVEL 38.1866
 TYPE LAYER SHAPE RECTANGULAR PROFILE —
 LONG 110cm WIDE 100cm DEEP/HIGH 60cm

METHOD HAND/TROWEL CONDITIONS DRY/GOOD LIGHT

SOIL SAND COLOUR ORANGE PINK MUNSELL 5YR 5/6

INCLUSIONS LIME FLECKING; WATER WORN PEBBLES, BRICK FRAGMENTS.

DESCRIPTION A LAYER OF SAND WITH A LOW QUANTITY OF INCLUSIONS
THE LAYER IS RELATIVELY LEVEL. THE LAYER HAS BEEN
CUT AND DISTURBED BY THE CONSTRUCTION TRENCHES FOR THE
TWO BRICK WALL FOUNDATIONS 3002, 3006. THE LAYER
ALSO CONTAINED SUPERFICIAL LENSES OF LIME AND FRAGMENTS OF
MAGNESIUM LIMESTONE.

CONTEXT 2 N

BELOW 3000 SEALED BY

SAME AS PART OF

BUTTS GROUPED WITH

ABOVE 3012 SEALS

CUTS CUT BY 3003, 300

FILL OF FILLED BY

POT Y METAL N BONE Y STONE N FLINT N ORGANIC N OTHER Y SAMPLE N

CLASS/INTERPRETATION A RELATIVELY SUBSTANTIAL LAYER OF RED SAND,
MAKING UP GROUND LEVEL TO THE REAR OF 4 FISHERGATE.

PLAN NOS 10 / FIG N° 17 SECTION NOS 18 / FIG N° 21

PHOTOS 1/31

DUG BY GK SUPERVISOR KJC DATED 13 08 93

ARCHAEOLOGICAL WATCHING BRIEF - CONTEXT SHEET 1

SITE NAME 4 FISHERGATE, RIPON. AREA 3 YEAR 1993
 CONTEXT 3006 COORDS 31190/71320 LEVEL 38.950
 TYPE STRUCTURE SHAPE LINEAR PROFILE —
 LONG 100cm WIDE 12cm DEEP/HIGH 34cm
 METHOD HAND/TROWEL CONDITIONS DRY / GOOD LIGHT
 SOIL — COLOUR — MUNSELL —

INCLUSIONS —

DESCRIPTION A LINEAR ARRANGEMENT OF HAND MADE CLAMP BRICKS SET END TO END, FLAT SIDE UP ON AN EAST WEST ALIGNMENT. THE STRUCTURE IS CONTAINED WITHIN A CONSTRUCTION TRENCH 3007 AND IS SURROUNDED BY ITS FILL 3008. THE STRUCTURE WOULD APPEAR TO BE OF A SIMILAR FORM AND SIZE AND ALIGNMENT TO THOSE FOUNDATIONS TO THE IMMEDIATE SOUTH 3002. THE FULL EXTENT OF THE STRUCTURE WAS NOT IDENTIFIED AS IT PASSED BENEATH THE EXCAVATION EDGE.

CONTEXT 2 N

BELOW 3000 SEALED BY —
 SAME AS — PART OF —
 BUTTS 3006 GROUPED WITH 3002
 ABOVE — SEALS —
 CUTS — CUT BY —
 FILL OF 3007 FILLED BY —

POT N METAL N BONE N STONE N FLINT N ORGANIC N OTHER N SAMPLE N

CLASS/INTERPRETATION AN INSUBSTANTIAL BRICK FOUNDATION, ASSOCIATED WITH WHAT IS SUSPECTED TO BE A BRICK YARD PARTITION WALL.

PLAN NOS 10 / FIG NO 17 SECTION NOS 18 / FIG NO 21

PHOTOS 1/31

DUG BY GK SUPERVISOR KJC DATED 13/8/93

ARCHAEOLOGICAL WATCHING BRIEF - CONTEXT SHEET 1

SITE NAME 4 FISHERGATE, RIBN. AREA 3 YEAR 1993
 CONTEXT 3007 COORDS 31190, 71320 LEVEL 38.950
 TYPE CUT SHAPE LINEAR PROFILE —
 LONG 100 cm. WIDE — DEEP/HIGH 36 cm
 METHOD HAND/TROWEL CONDITIONS DRY / GOOD LIGHT.
 SOIL — COLOUR — MUNSELL —

INCLUSIONS —
 DESCRIPTION A LINEAR CUT

CONTEXT 2 N.

BELOW 3000 SEALED BY —
 SAME AS — PART OF —
 BUTTS — GROUPED WITH —
 ABOVE — SEALS —
 CUTS 3005 CUT BY —
 FILL OF — FILLED BY 3008, 3006

POT N METAL N BONE N STONE N FLINT N ORGANIC N OTHER N SAMPLE N

CLASS/INTERPRETATION A CONSTRUCTION TRENCH FOR THE INSUBSTANTIAL BRICK FOUNDATIONS OF A YARD WALL.

PLAN NOS 10 / FIG N° 17 SECTION NOS 18 / FIG N° 21
 PHOTOS 1/31

DUG BY GK. SUPERVISOR KJC DATED 13/08/93

ARCHAEOLOGICAL WATCHING BRIEF - CONTEXT SHEET 1

SITE NAME 4 FISHERGATE, RIPON. AREA 3. YEAR 1993
 CONTEXT 3008 COORDS 31190, 71320 LEVEL 38.1950
 TYPE FILL SHAPE LINEAR PROFILE —
 LONG 100cm WIDE — DEEP/HIGH 36cm
 METHOD HAND/TROWEL CONDITIONS DRY/GOOD LIGHT
 SOIL SAND COLOUR LIGHT BROWN MUNSELL 7.5 YR/S/2

INCLUSIONS LIME FLECKING
 DESCRIPTION A SAND FILL OF THE CONSTRUCTION TRENCH CUT
3007, ASSOCIATED WITH THE BRICK WALL FOUNDATIONS
3006. THE FILL CONTAINED A VERY LOW QUANTITY OF
INCLUSIONS. THE FULL EXTENT OF THE FILL WAS NOT
IDENTIFIED AS IT PASSED BENEATH THE EXCAVATION EDGE.

CONTEXT 2 N

BELOW 3000 SEALED BY —
 SAME AS — PART OF —
 BUTTS 3006 GROUPED WITH —
 ABOVE — SEALS —
 CUTS — CUT BY —
 FILL OF 3007 FILLED BY —

POT N METAL N BONE N STONE N FLINT N ORGANIC N OTHER N SAMPLE N

CLASS/INTERPRETATION THE BACKFILL OF A CONSTRUCTION TRENCH FOR
A 19TH CENTURY BRICK WALL.

PLAN NOS 10 / FIG N° 17 SECTION NOS 18 / FIG N° 21
 PHOTOS 1/31

DUG BY GK SUPERVISOR RJC DATED 130893

ARCHAEOLOGICAL WATCHING BRIEF - CONTEXT SHEET 1

SITE NAME 4 FATHERGATE, RIPON AREA 3 YEAR 1993
 CONTEXT 3009 COORDS 31190, 71320 LEVEL 38.1, 827
 TYPE STRUCTURE SHAPE LINEAR PROFILE _____
 LONG 100 cm WIDE 16 cm Ø DEEP/HIGH 16 cm Ø
 METHOD HAND/NOVEL CONDITIONS Dry / GOOD LIGHT
 SOIL _____ COLOUR _____ MUNSELL _____

INCLUSIONS _____
 DESCRIPTION A CERAMIC FOUL WATER DRAIN WITH A 16cm DIAMETER
THE DRAIN. THE DRAIN IS CONTAINED WITHIN A NARROW TRENCH
3010 AND SURROUNDED BY THE PRIMARY AND SINGLE FILL
3011.

CONTEXT 2 N

BELOW _____ SEALED BY _____
 SAME AS 1010 PART OF _____
 BUTTS 3011 GROUPED WITH _____
 ABOVE _____ SEALS _____
 CUTS _____ CUT BY _____
 FILL OF 3010 FILLED BY _____

POT N METAL N BONE N STONE N FLINT N ORGANIC N OTHER N SAMPLE N

CLASS/INTERPRETATION A 20TH CENTURY CERAMIC FOUL WATER DRAIN
(DISUSED) ALIGNED WEST SOUTH WEST. THE SAME AS 1010

PLAN NOS 11 / FIG N° 18 SECTION NOS 18 / FIG N° 21
 PHOTOS 1/32 - 36

DUG BY GK SUPERVISOR KJC DATED 130893

ARCHAEOLOGICAL WATCHING BRIEF - CONTEXT SHEET 1

SITE NAME 4 FISHERGATE, RIPON AREA 3 YEAR 1993
 CONTEXT 3010 COORDS 31190, 71320 LEVEL 38.827
 TYPE CUT SHAPE LINEAR PROFILE U SHAPE
 LONG 100cm WIDE — DEEP/HIGH 28cm
 METHOD HAND/TROWEL CONDITIONS DRY / GOOD LIGHT
 SOIL — COLOUR — MUNSELL —

INCLUSIONS —
 DESCRIPTION A CONSTRUCTION TRENCH FOR THE 20TH CENTURY CERAMIC FOUR WATER DRAIN. THE WIDTH OF THE CUT COULD NOT BE ASCERTAINED AS IT PASSED BEYOND THE EXCAVATION EDGE.

CONTEXT 2 N

BELOW — SEALED BY —
 SAME AS — PART OF —
 BUTTS — GROUPED WITH —
 ABOVE — SEALS —
 CUTS 3005 CUT BY —
 FILL OF — FILLED BY 3011, 3009

POT N METAL N BONE N STONE N FLINT N ORGANIC N OTHER N SAMPLE N

CLASS/INTERPRETATION A CONSTRUCTION TRENCH FOR A 20TH CENTURY CERAMIC FOUR WATER DRAIN.

PLAN N^{OS} — SECTION N^{OS} 18 / FIG N° 21
 PHOTOS 1 / 32-36

DUG BY G.K. SUPERVISOR KJC DATED 13/08/93

ARCHAEOLOGICAL WATCHING BRIEF - CONTEXT SHEET 1

SITE NAME 4 FISHERGATE, RIPON. AREA 3 YEAR 1993
 CONTEXT ~~2100/NA~~ 3011 COORDS 31190, 71320 LEVEL 38.1, 827
 TYPE Fill. SHAPE — PROFILE —
 LONG 100 cm. WIDE — DEEP/HIGH 28 cm.
 METHOD Hand/trowel CONDITIONS Dry / GOOD LIGHT.
 SOIL SAND COLOUR BLACK BROWN MUNSELL 10R 3/1

INCLUSIONS —
 DESCRIPTION A SAND FILL OF THE CONSTRUCTION TRENCH FOR THE 20TH CENTURY FOUR WATER DRAIN. THE PROFILE AND WIDTH OF THE FILL COULD NOT BE ASCERTAINED AS IT PASSED BENEATH THE EXCAVATION EDGE.

CONTEXT 2 N

BELOW — SEALED BY —
 SAME AS — PART OF —
 BUTTS 3019 GROUPED WITH —
 ABOVE — SEALS —
 CUTS — CUT BY —
 FILL OF 3010 FILLED BY —

POT N METAL N BONE N STONE N FLINT N ORGANIC N OTHER N SAMPLE N

CLASS/INTERPRETATION THE PRIMARY AND SINGLE FILL OF THE CONSTRUCTION TRENCH 3010.

PLAN N^{OS} — SECTION N^{OS} 18 / FIG N^O 21

PHOTOS 1/32-36

DUG BY GK. SUPERVISOR KJC DATED 130893.

ARCHAEOLOGICAL WATCHING BRIEF - CONTEXT SHEET 1

SITE NAME 4 FISHERGATE, RIPON. AREA 3 YEAR 1993
 CONTEXT 3012 COORDS 31190/71320 LEVEL 38.1423
 TYPE LAYER SHAPE RECTANGULAR PROFILE _____
 LONG 100cm. WIDE 200cm DEEP/HIGH 20cm
 METHOD HAND/TROWEL SAND. CONDITIONS DRY/GOOD LIGHT
 SOIL _____ COLOUR YELLOW BROWN MUNSELL 2.5Y 5/4

INCLUSIONS WATER WORN PEBBLES, LIME FECKING, CHARCOAL FECKING.
 DESCRIPTION A LAYER OF SAND, WELL COMPACTED. THE LAYER HAS A
 RELATIVELY HIGH QUANTITY OF INCLUSIONS, THE LAYER SLOPES
 GENTLY FROM THE SSE TO THE NORTH. IN THE NORTH
 EAST CORNER OF THE TRENCH HOLE THE LAYER FALLS AWAY MORE
 STEEPLY; IT DOES NOT APPEAR TO HAVE BEEN CUT, AND IS
 SEALED BY 3005. THE LAYER CONTAINS TRACES OF IRON PANNING.
 AT ITS INTERFACE WITH 3013 A SMALL QUANTITY OF PETRIFIED BONE WAS
 RECOVERED.

CONTEXT 2 N

BELOW 3005 SEALED BY _____
 SAME AS _____ PART OF _____
 BUTTS _____ GROUPED WITH _____
 ABOVE 3013, 3014. SEALS _____
 CUTS _____ CUT BY _____
 FILL OF _____ FILLED BY _____

POT 7 METAL N BONE X STONE N FLINT N ORGANIC N OTHER N SAMPLE N

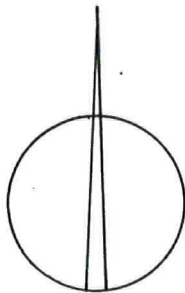
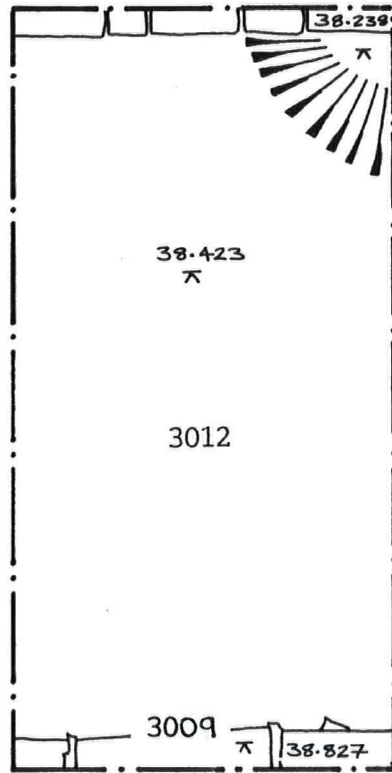
CLASS/INTERPRETATION A RELATIVELY THIN LAYER OF COMPACTED SAND.

PLAN NOS 11 / FIG N° 18 SECTION NOS 18 / FIG N° 21

PHOTOS 1/32 -

DUG BY G.K. SUPERVISOR KJC DATED 140893

4 FISHERGATE
RIPON
AUGUST 1993



Scale 1:20



Metres

ARCHAEOLOGICAL WATCHING BRIEF - CONTEXT SHEET 1

SITE NAME 4 FISHERGATE, RIPON. AREA 3 YEAR 1993

CONTEXT 3013 COORDS 31190, 71320 LEVEL 38.1305

TYPE LAYER SHAPE RECTANGULAR PROFILE

LONG 100cm WIDE 200cm DEEP/HIGH 8cm

METHOD HAND/TROWEL CONDITIONS Dry / GOOD LIGHT.

SOIL SAND/CLAY COLOUR GREY BROWN MUNSELL 5YR 4/2

INCLUSIONS WATER WORN COBBLES, PEBBLES, MAGNESIAN LIMESTONE FRAGMENTS

DESCRIPTION A LAYER OF SANDY ^{cm} WITH A 85% INCLUSION OF WATER

WORN COBBLES / PEBBLES AND THE OCCASIONAL FRAGMENT OF MAGNESIAN

LIMESTONE, MEASURING UP TO 24cm IN SIZE. THE INCLUSIONS ARE

WELL CONTACTED INTO THE SAND, PROVIDING A RELATIVELY LEVEL

SURFACE THAT FALLS VERY GENTLY FROM THE SSE TO THE NORTH

CONTEXT 2 N.

BELOW 3012 SEALED BY

SAME AS PART OF

BUTTS GROUPED WITH

ABOVE 3014 SEALS

CUTS CUT BY

FILL OF FILLED BY

POT N METAL N BONE 7 STONE N FLINT N ORGANIC N OTHER N SAMPLE N

CLASS/INTERPRETATION A POSSIBLE ROUGHLY LATED COBBLE AND

MAGNESIAN LIMESTONE ^{FLOOR} SURFACE.

PLAN NOS 12 / FIG N° 19 SECTION NOS 18 / FIG N° 21

PHOTOS 1/33, 34

DUG BY G.K. SUPERVISOR KJC DATED 14/8/93