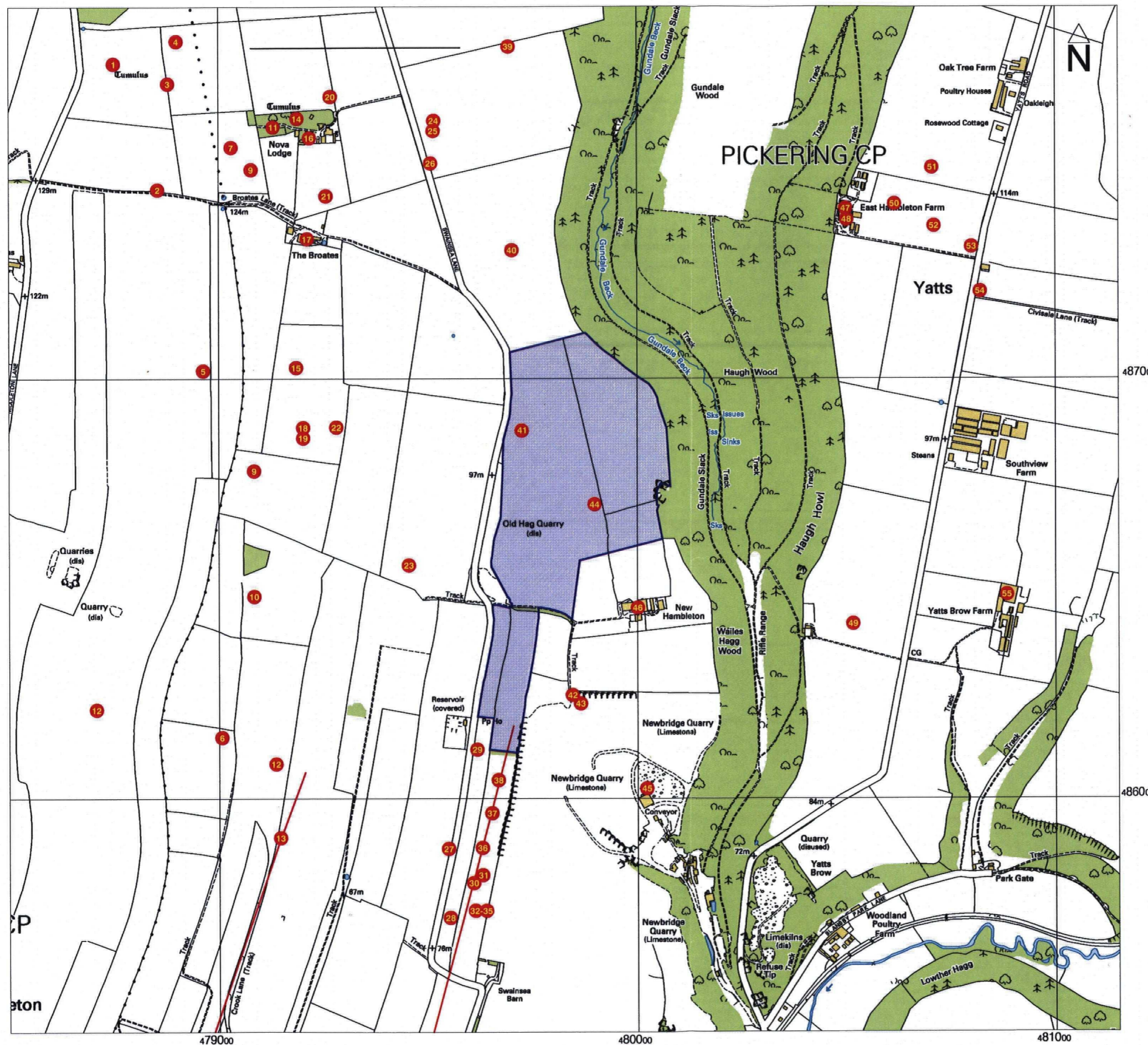


Fig. 1. Site Location

Reproduced with the permission of the controller of Her Majesty's Stationery Office © Crown Copyright. West Yorkshire Archaeology Service: licence LA076406, 2005.



	Area of proposed quarry extension
	Catalogued archaeological site or find
	Approximate line of trackway

0 500m

© ASWYAS 2008.
 Archaeological Services W Y A S
 PO Box 30, Nepehaw Lane South, Morley, LS27 0UG
 Tel: 0113 383 7500 Fax: 0113 383 7501

Based on Ordnance Survey digital mapping with the permission of the controller of Her Majesty's Stationery Office.
 © Crown Copyright.
 Archaeological Services W Y A S: licence LA076406, 2008.

Fig. 2. Location of catalogued archaeological sites and find spots (1:10 000)

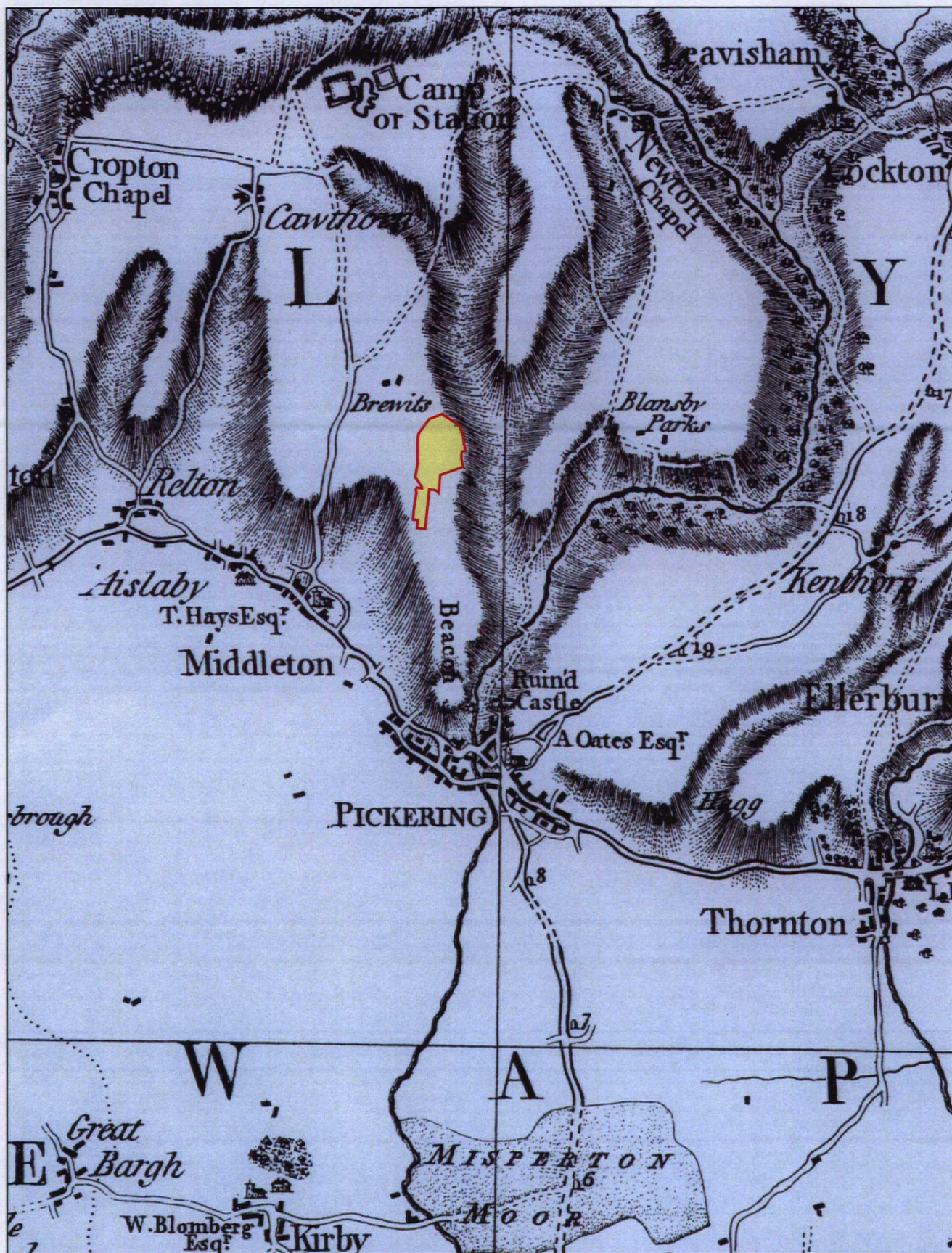


Fig. 3. Jefferys, T., 1775, Map of Yorkshire, showing the approximate location of the proposed extraction area, 1 inch to 1 mile (not to scale)

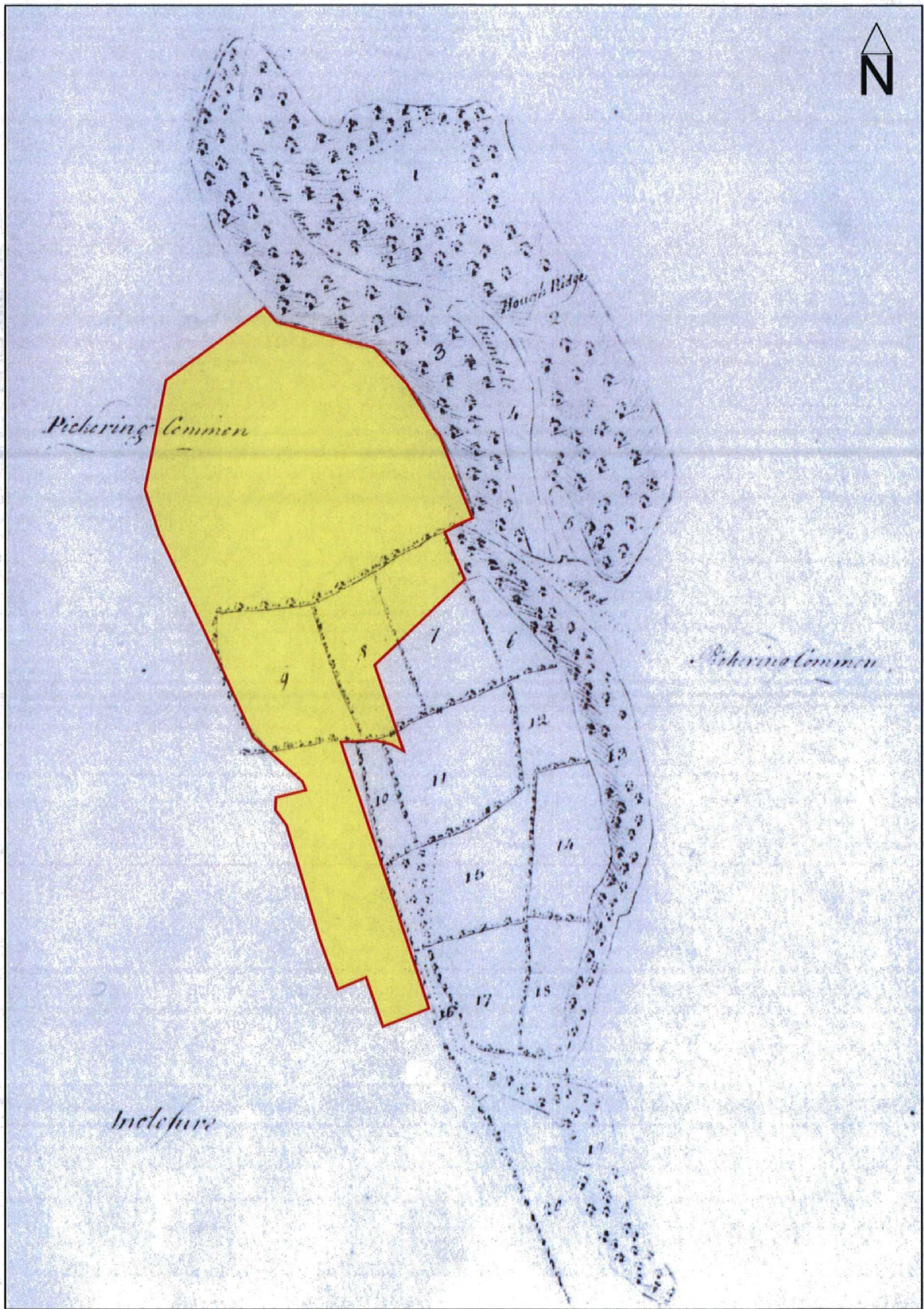


Fig. 4. Survey of the Pickering District, 1777, North Yorkshire Archives Ref: MIC 1205 Frame 1644



Fig. 5. Plan of the High Commons of Pickering and Newton with the Public and Private Roads, 1789, North Yorkshire Archives Ref: MIC 1540

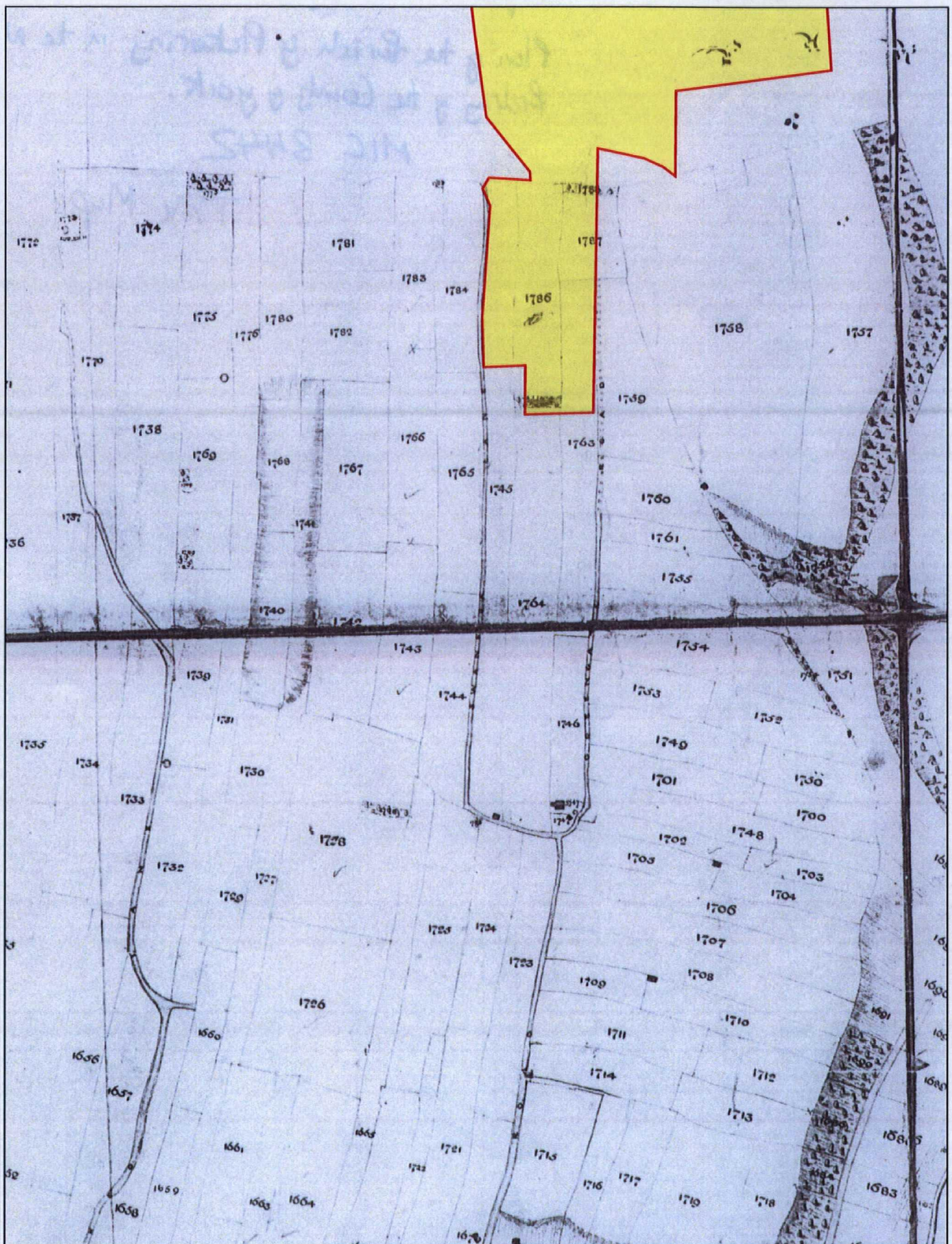


Fig. 6. Pickering Tithe Award Map, 1838, North Yorkshire Archives Ref: MIC 3442

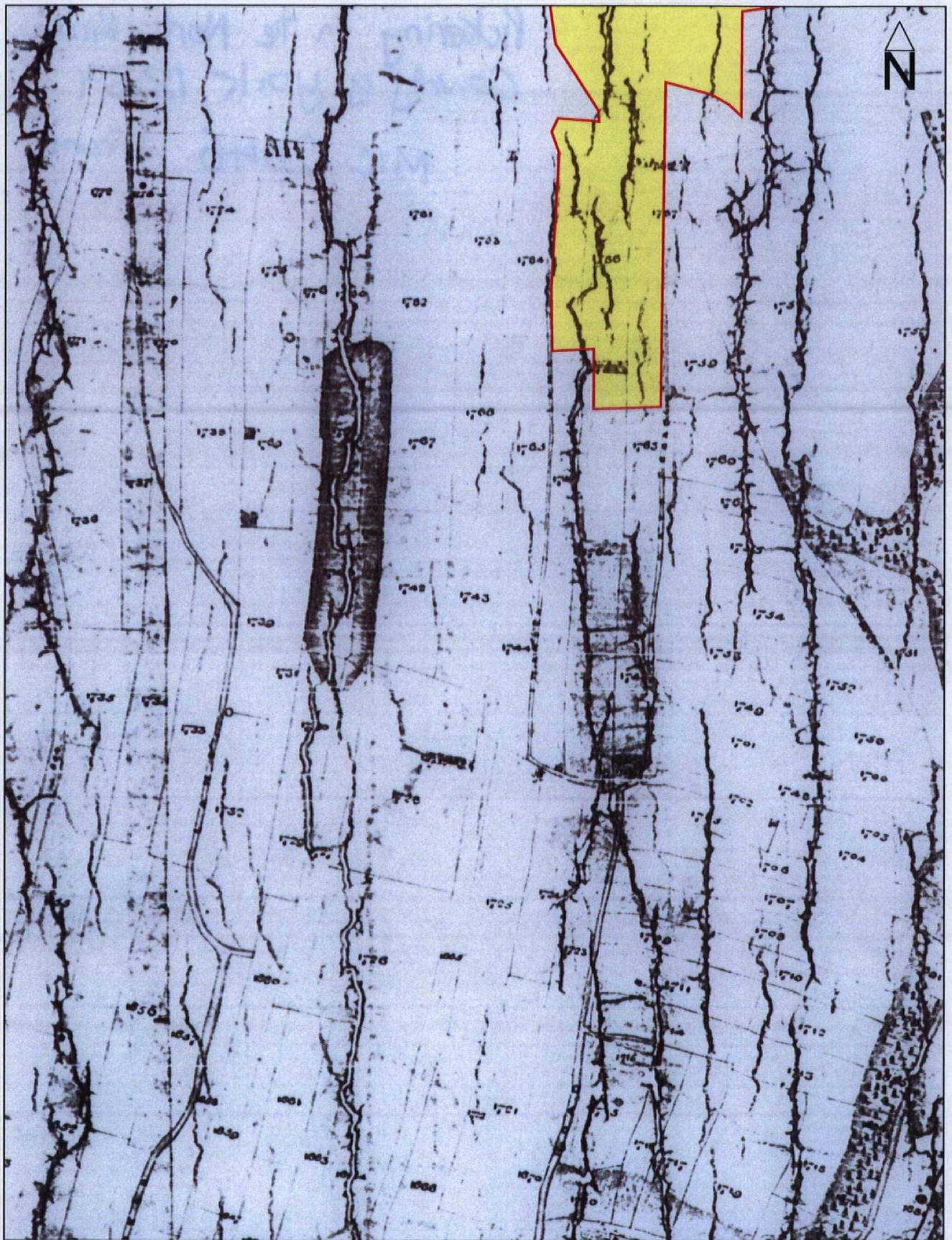


Fig. 7. Map of the Parish of Pickering, 1839, North Yorkshire Archives Ref: MIC 2046 Frame 125



Fig. 8. An extract from the O.S. Map of 1854, first edition, sheets 75 and 91, 6 inch to 1 mile

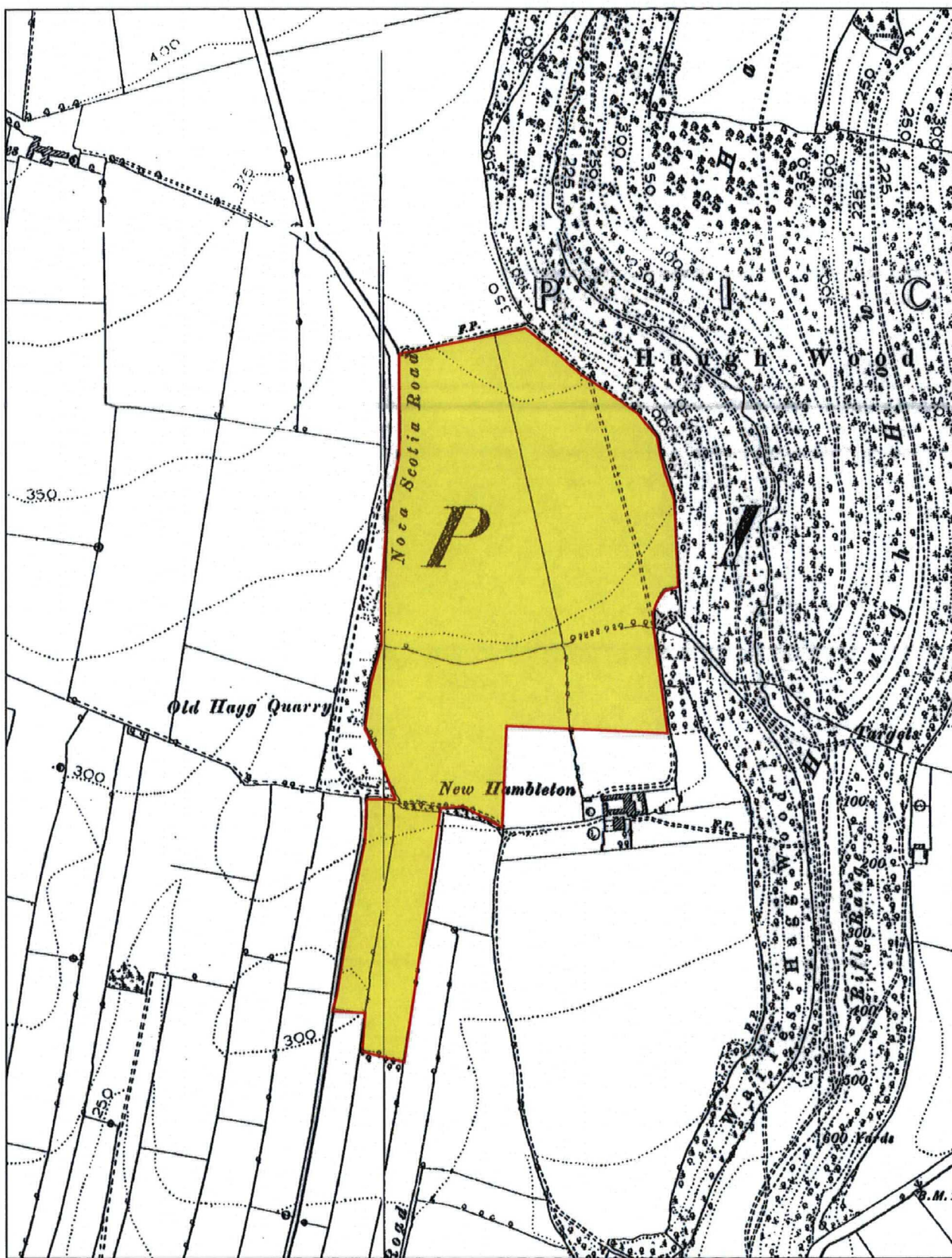


Fig. 9. An extract from the O.S. Map of 1893, second edition, sheets 75SE and SW and 91NE and NW, 6 inch to 1 mile

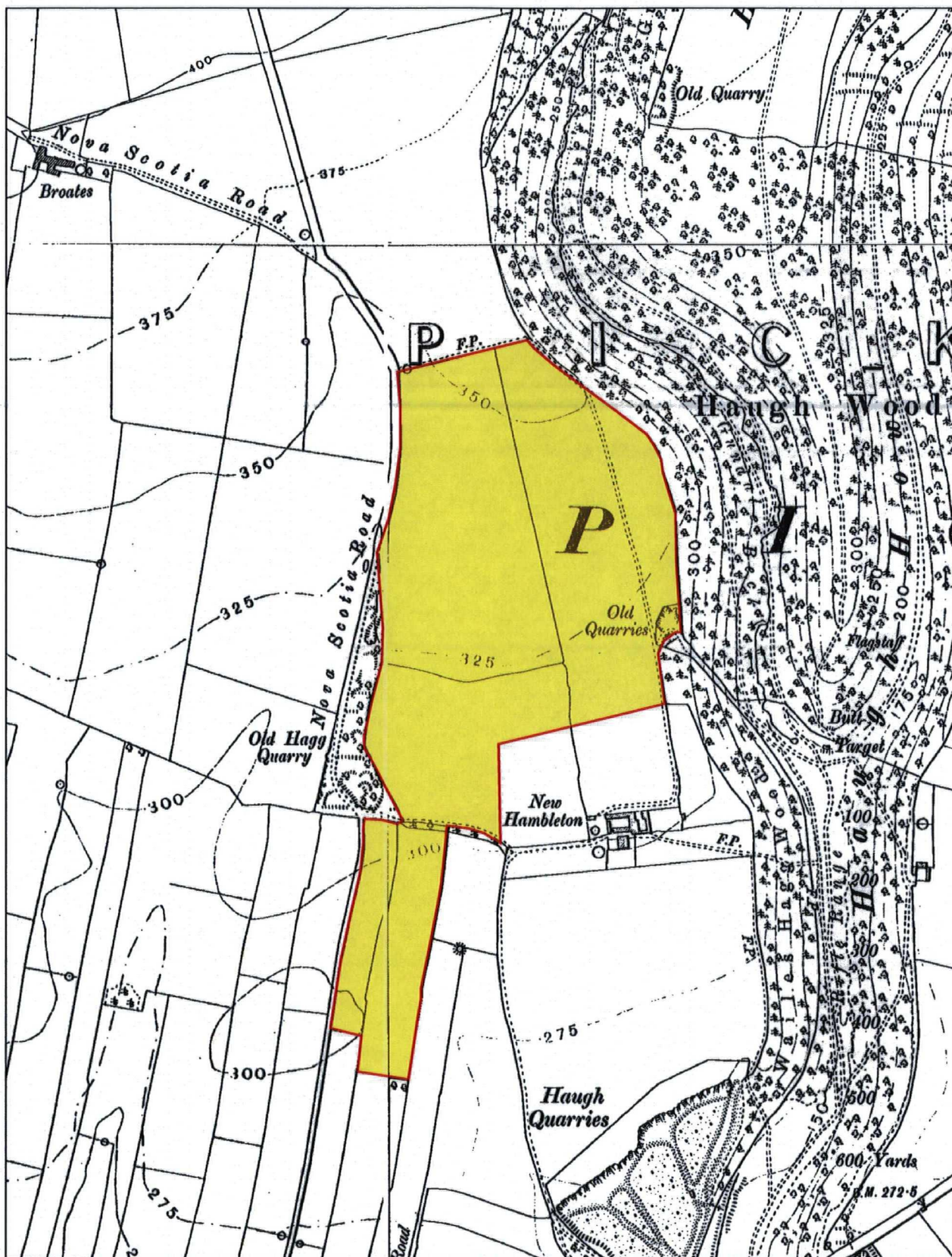


Fig. 10. An extract from the O.S. Map of 1914, sheets 75SE and SW and 91NE and NW, 6 inch to 1 mile

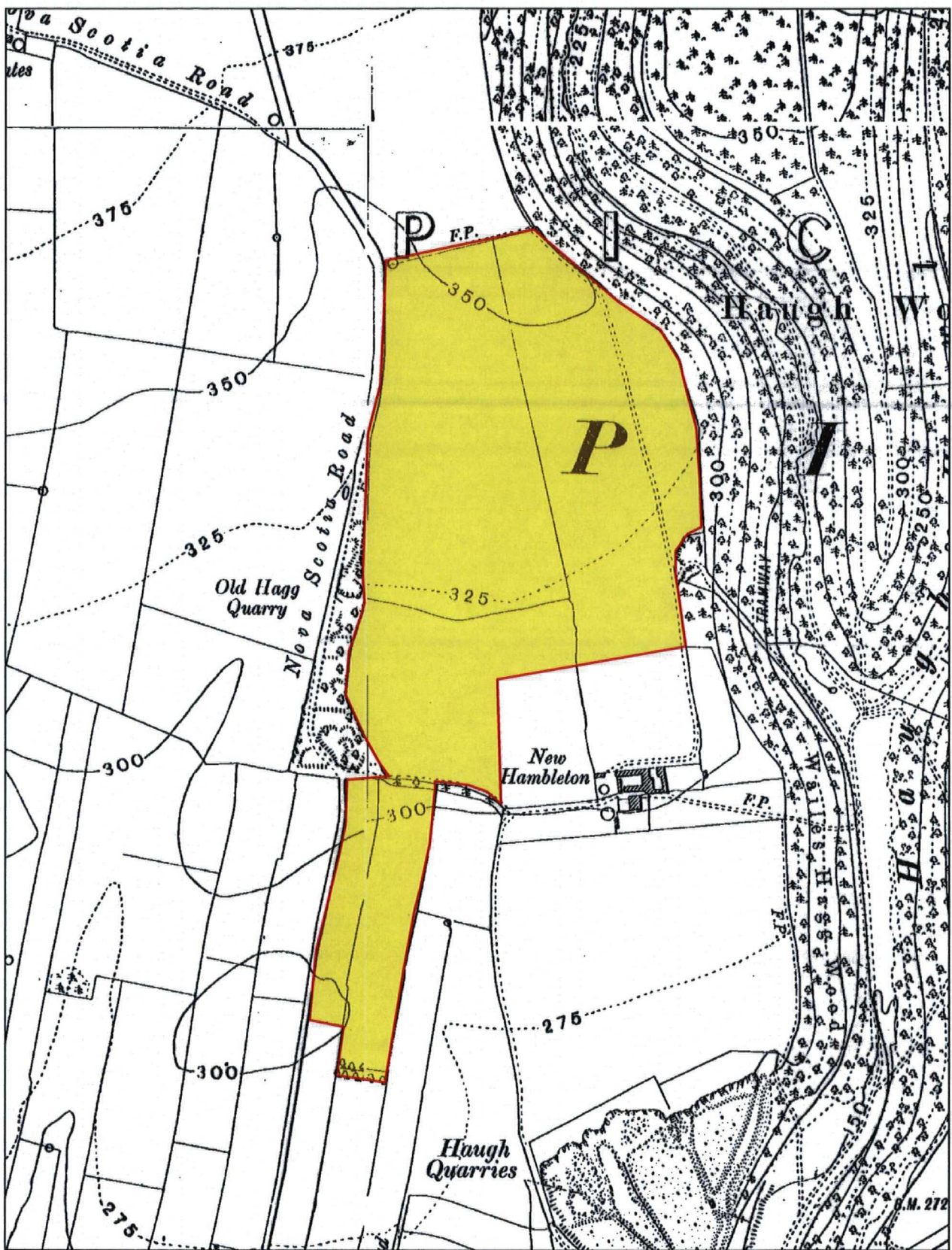


Fig. 11. An extract from the O.S. Map of 1930, sheets 75SE and SW and 91NE and NW, 6 inch to 1 mile

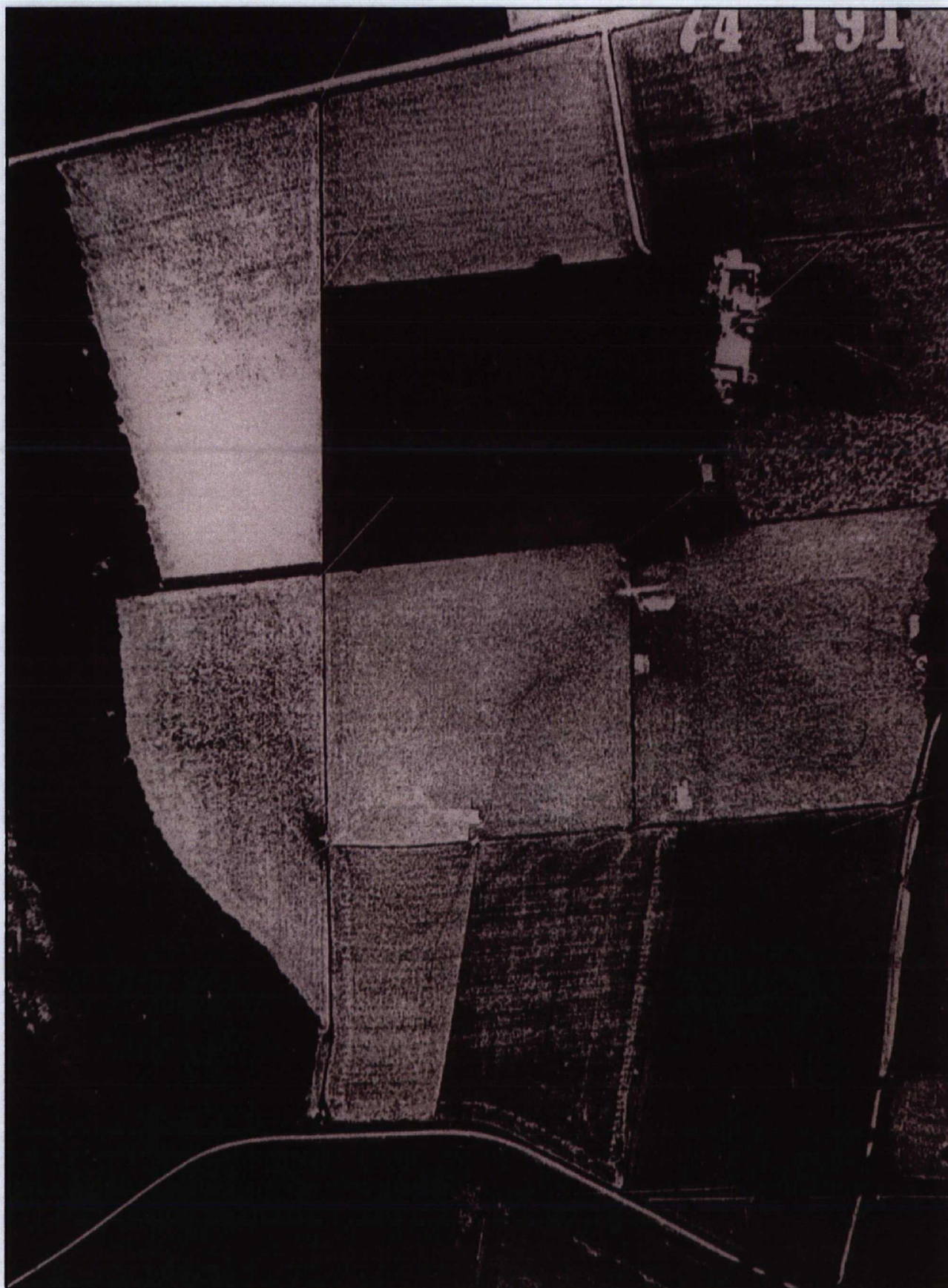


Plate 1. Newbridge Quarry Extraction Area in 1972 (AP ANY 110/72/142), showing the proposed extraction area (Copyright North Yorkshire Heritage Unit)



Plate 2. Aerial photograph of archaeological features (AP CUC CMT 37), c.400m west of Proposed Extraction Area. Cat. nos 15, 18, 19 and 22 (Copyright Cambridge University)

◁N



*Plate 3. Crop Mark Enclosure, c. 950m Northwest of the Proposed Extraction Area. Cat. No. 7
(Copyright Ordnance Survey)*

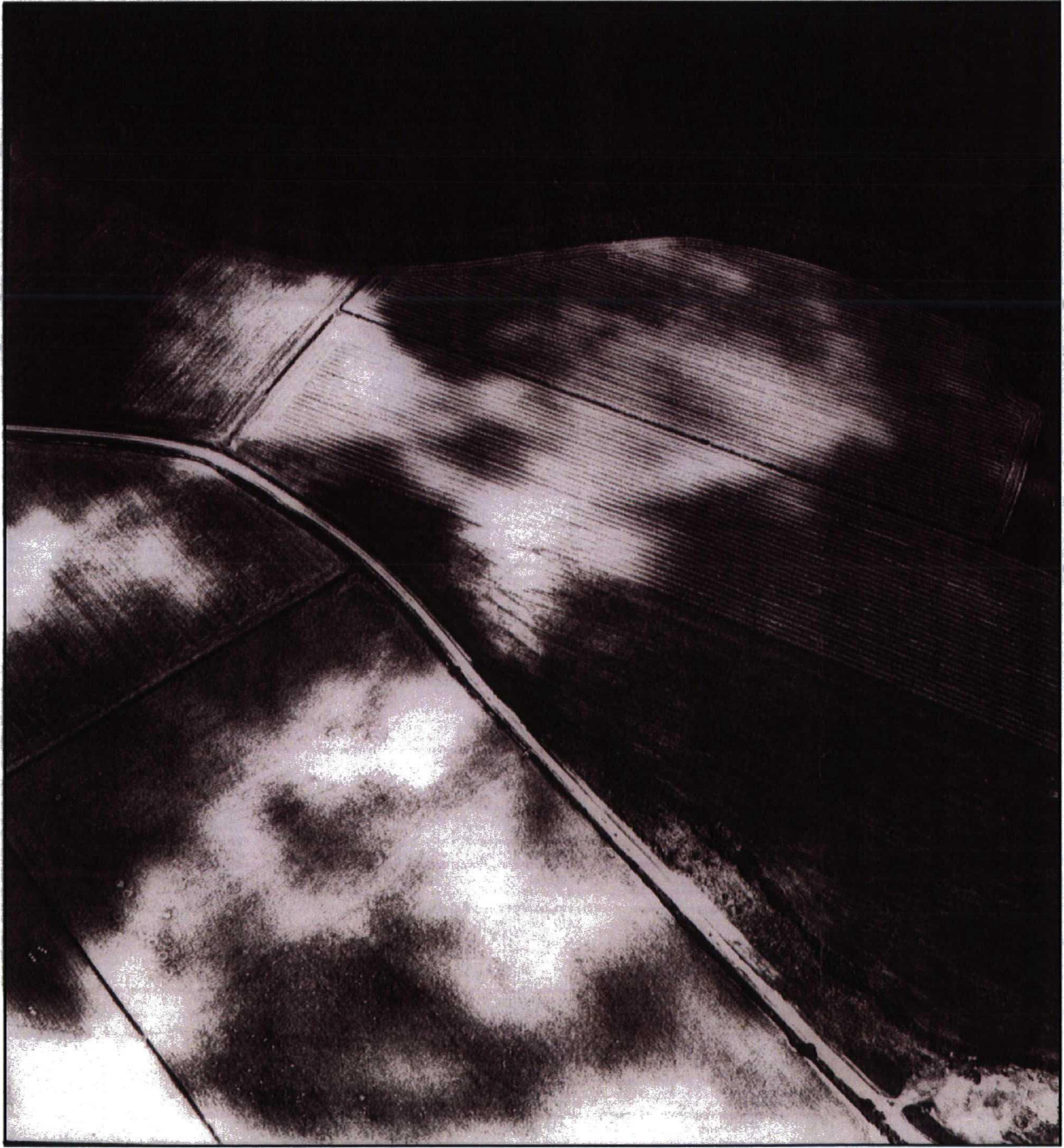


Plate 4. Aerial photograph of archaeological features within the proposed extraction area (AP NMR 17029/28), Cat. no. 70