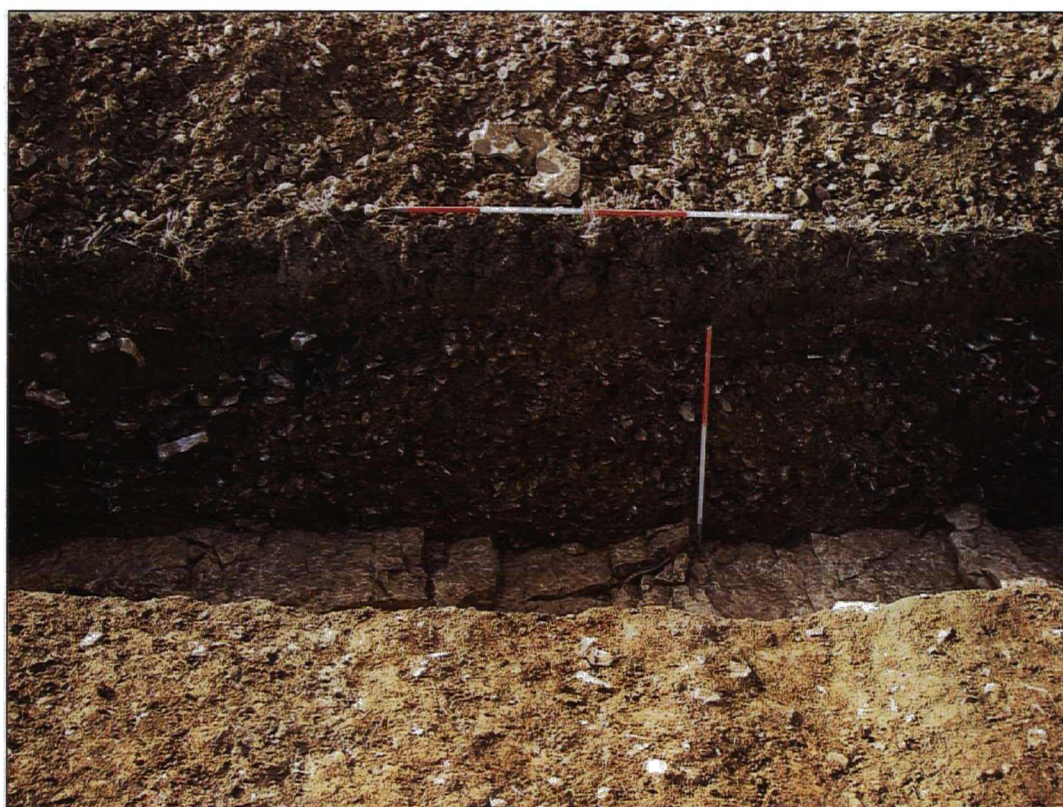




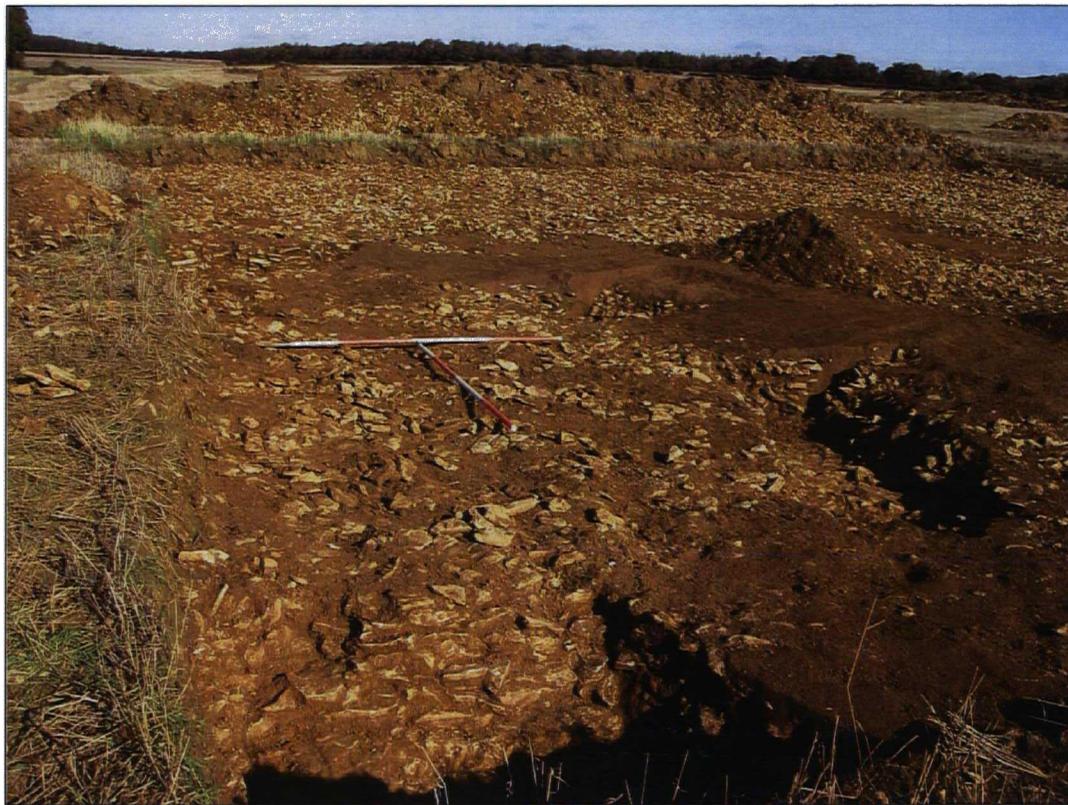
*Plate 21. Trench 18, showing Ditch 212 within Feature 216, looking west*



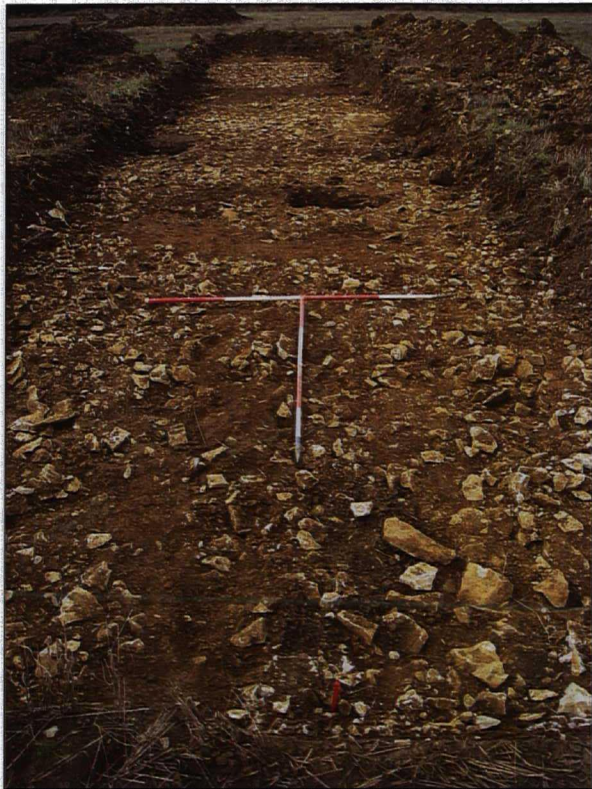
*Plate 22. Trench 18 showing large central mound of redeposited limestone 213, looking west*



*Plate 23. Trench 18 showing the east facing section of Feature 216.*



*Plate 24. Trench 19 showing excavated Ring-Gully section 293, looking north*



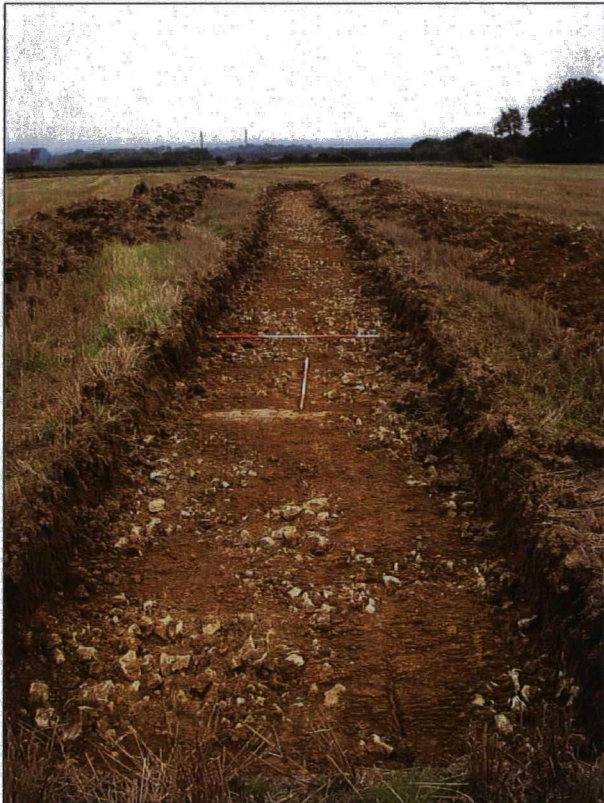
*Plate 25. Trench 20 showing Pit 232 and Ditch 106, looking west*



*Plate 26. Trench 21 northern area, showing Ditch 112, Pits 288 and 306, Gullies 260 and 264 and Postholes 266 and 286, looking east*



*Plate 27. Trench 22, looking east*



*Plate 28. Trench 23, looking south*



*Plate 29. Trench 24, looking east*



*Plate 30. Trench 25, looking south*



*Plate 31. Trench 26 showing Pit 272 and Postholes 274, 277, 301, 303 and 305, looking south*



*Plate 32. Trench 27 showing Trackway Gullies 146 and 148, looking north*



*Plate 33. Trench 28 showing Gully 242, looking north-east*



*Plate 34. Trench 29, looking south*



*Plate 35. Trench 30, looking east*



*Plate 36. Trench 31, looking east*





*Plate 37. Trench 32, looking south*



*Plate 38. Trench 33 showing Feature 152 and 155, looking south*