

**ARCUS Key**

- Turbine location
- Turbine ellipse
- ADS/Cropmark site
- HER site
- Listed building
- Modern features
- Possible archaeology

**Key to NMP conventions**

- Ditch
- Bank
- Buildings/Stone walls
- Large cut feature e.g. quarry
- Levelled Ridge & Furrow
- Extant Ridge & Furrow
- Large Area Feature
- Railway/tramway

0 500m

Reproduced by permission of Ordnance Survey data on behalf of HMSO. © Crown Copyright 2008. All rights reserved. Ordnance Survey Licence number 50228A.

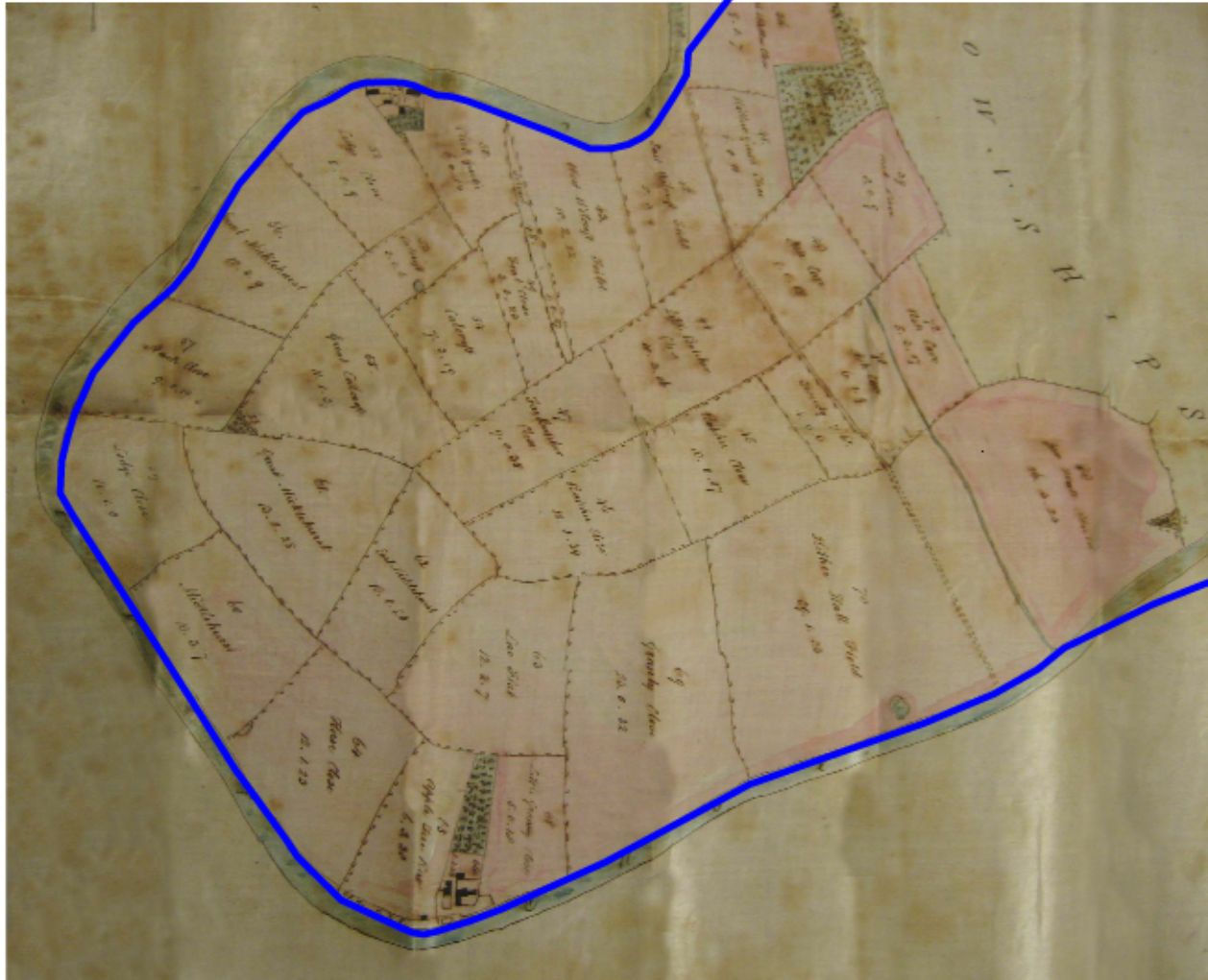
**ARCUS**  
 Unit 16, Riverside Block,  
 Sheaf Bank Business Park,  
 Prospect Road, Sheffield S2 3BN  
 www.arcus-group.shef.ac.uk  
 Tel: 0114 2235100  
 Fax: 0114 2234540

**Project:**  
**Cleek Hall Wind-Farm, Selby**

**Title:**  
**Location of known archaeological sites**

Scale	Date
1:12000	December 2008
NGR	Drawn
SE 6456 3040	CS
Project No.	Figure No.
1245	8.2





L:\References\1828 Cleek Hall\BANCAL\BANCAL.dwg - Seed List - 26/07/2008 09:40:18 - Plot no. 26/07/2008 10:02:44 - By: Ryan Harbridge

'Reproduced from DDTR/136 @ERALS'



Unit R5, Riverside Block  
Sheaf Bank Business Park  
Prospect Road, Sheffield S2 3BN  
www.arcusgroup.sheff.ac.uk  
Tel: 0114 2225106  
Fax: 0114 2224346

Project:  
**Cleek Hall Wind-Farm, Selby**

Title:  
**1828 plan of Turnham Hall estate**

Scale  
1:10000

NGR  
SE 6456 3040

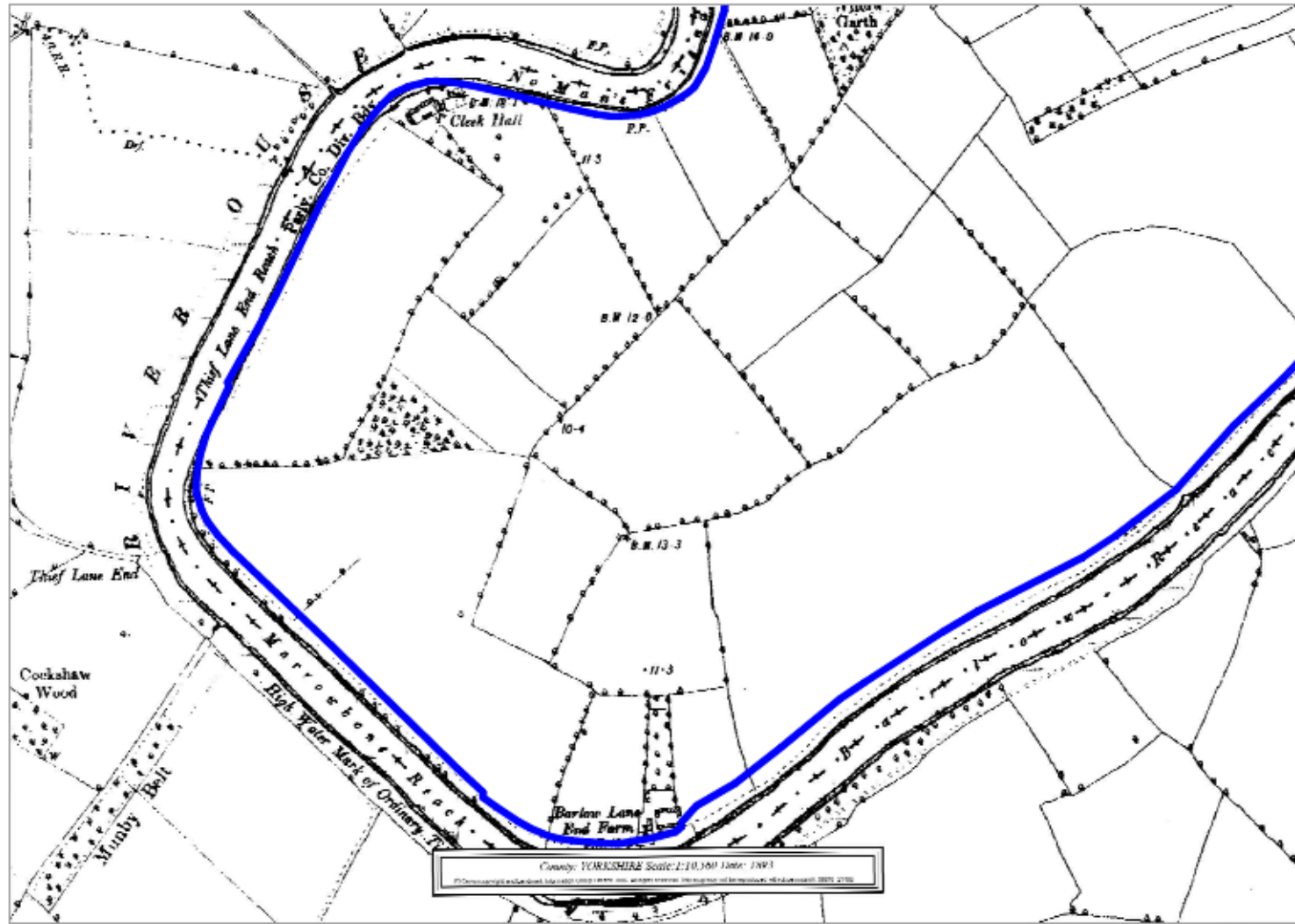
Project No.  
**1245**

Date  
December 2008

Drawn  
CS

Figure No.  
**8.4**





County: YORKSHIRE Scale: 1:10,000 Date: 1893  
© Crown Copyright and the Controller of Her Majesty's Stationery Office. All Rights Reserved. Ordnance Survey, 2003. 2100

L:\Renewables\4-0105 Cleek Hall\BACAL\26072008\221 OS Map\26072008 10:05:05 By: Ryan Harbridge

Reproduced from the Ordnance Survey's 1893 6 Inch: 1 mile OS map sheet Yorkshire 221'



Unit 16, Riverside Block  
 Sheaf Bank Business Park  
 Prospect Road, Sheffield S2 2BN  
 www.arcusgroup.shef.ac.uk  
 Tel: 0114 2225106  
 Fax: 0114 2224346

Project:  
**Cleck Hall Wind-Farm, Selby**

Title:  
**1893 OS map**

Scale:  
 1:10000

NGR:  
 SE 6456 3040

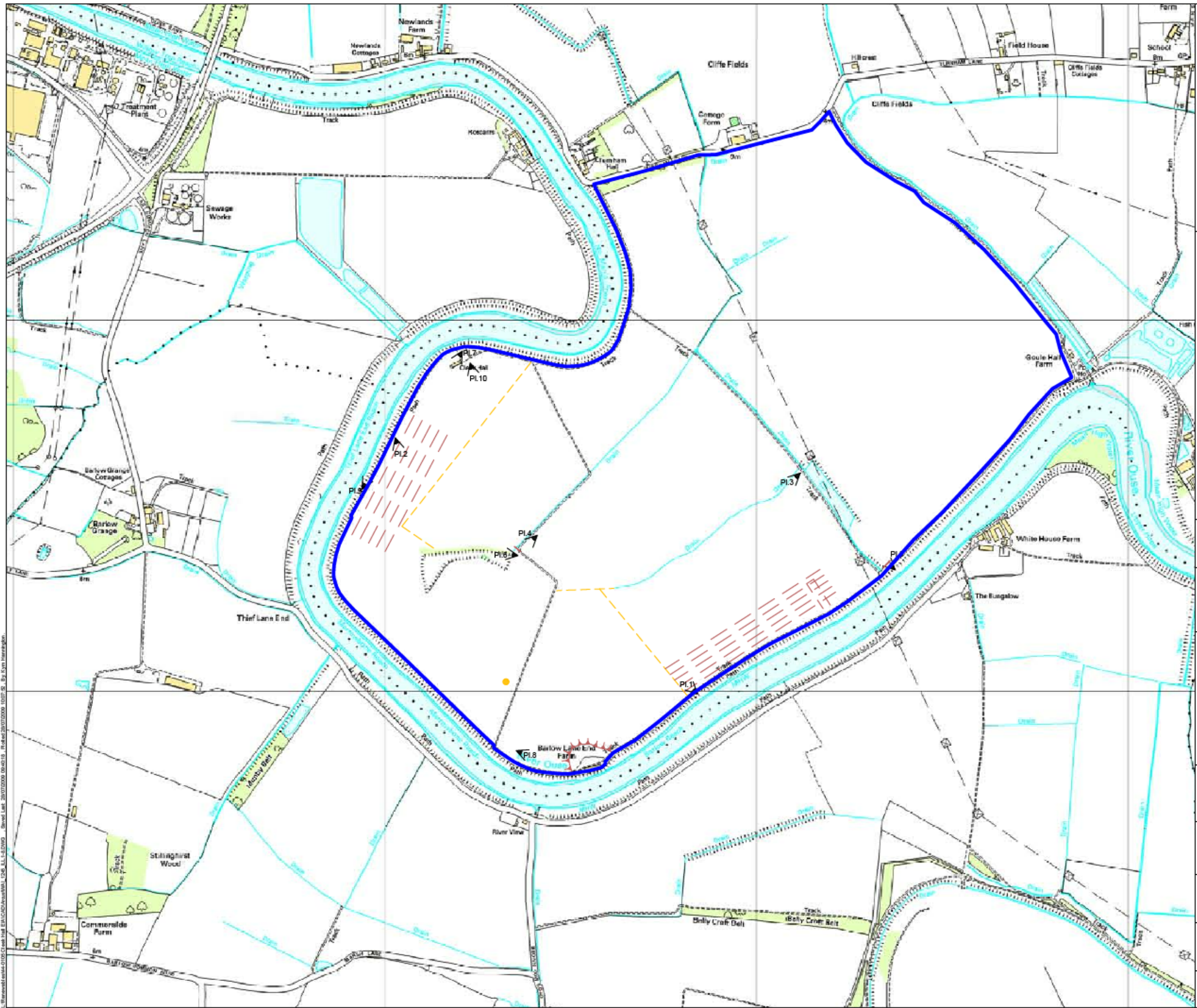
Project No.  
**1245**

Date:  
 December 2008

Drawn:  
 CS

Figure No.  
**8.6**





**ARCUS Key**

- - - - - Modern features
- / / / / / Possible archaeology
- ▶ Photo viewpoint
- Site boundary

0  500m

Reproduced by permission of  
Ordnance Survey data on behalf of HMSO.  
© Crown Copyright 2008. All rights reserved.  
Ordnance Survey Licence number 50228A.

**ARCUS**

Unit R6, Riverside Block,  
Sheaf Basin Business Park,  
Prospect Road, Sheffield S2 3BN  
www.arcus-group.shef.ac.uk  
Tel: 0114 2235100  
Fax: 0114 2234540

N  
↑

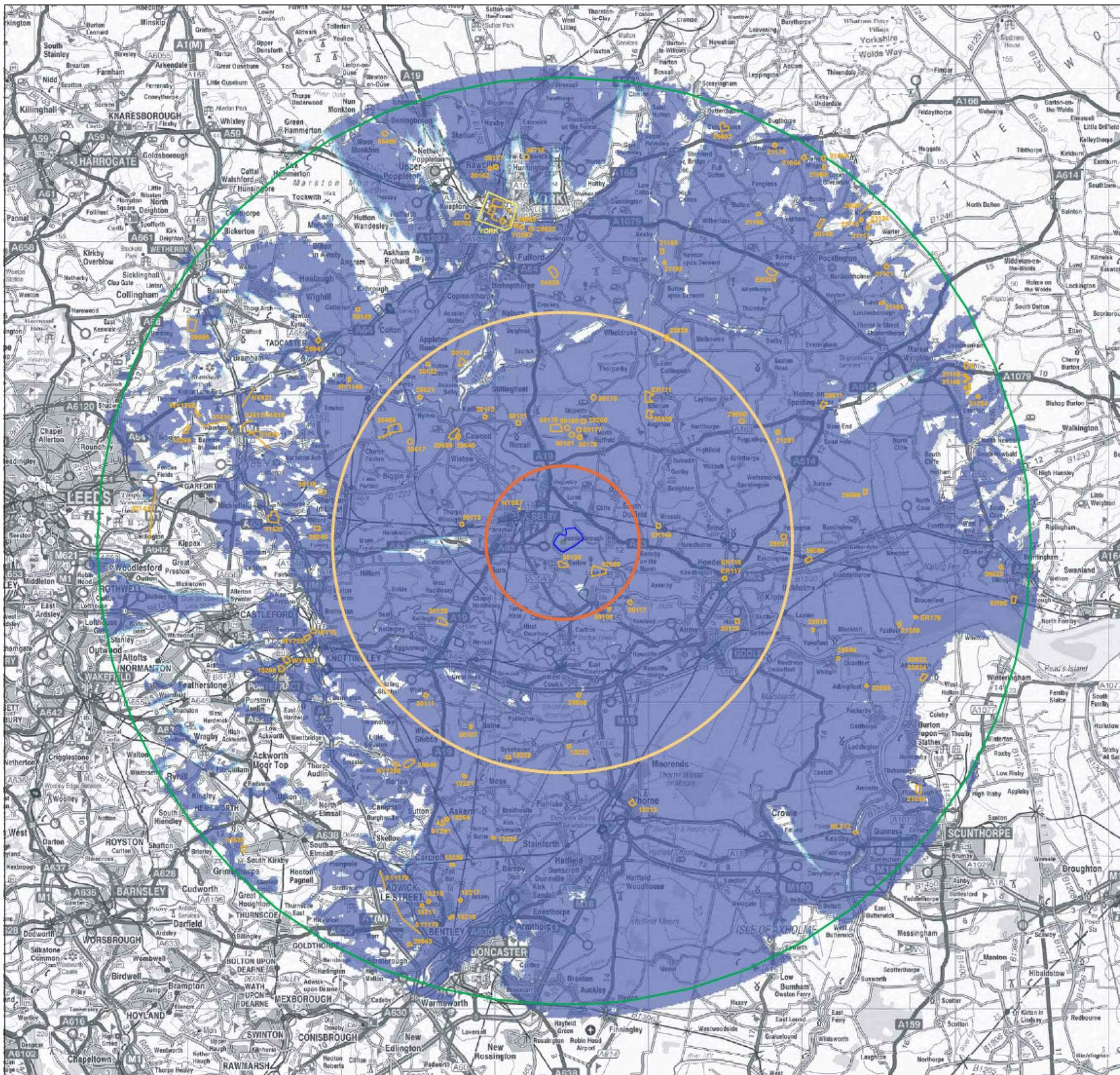
Project:  
**Cleek Hall Wind-Farm, Selby**

Title:  
**Site plan showing photo viewpoints**

Scale	Date
1:10000	December 2008
NGR	Drawn
SE 6456 3040	CS
Project No.	Figure No.
<b>1245</b>	<b>8.8</b>

Ordnance Survey data reproduced by permission of HMSO. © Crown Copyright 2008. All rights reserved. Ordnance Survey Licence number 50228A.





**Key:**

- Scheduled Ancient Monument
- Site Boundary
- 5km Site Buffer
- 15km Site Buffer
- 30km Site Buffer
- 1 turbine potentially visible
- 2 turbines potentially visible
- 3 turbines potentially visible
- 4 turbines potentially visible
- 5 turbines potentially visible



Reproduced by permission of Ordnance Survey on behalf of HMSO. © Crown copyright 2009. All rights reserved. Ordnance Survey Licence No. AL50228A.

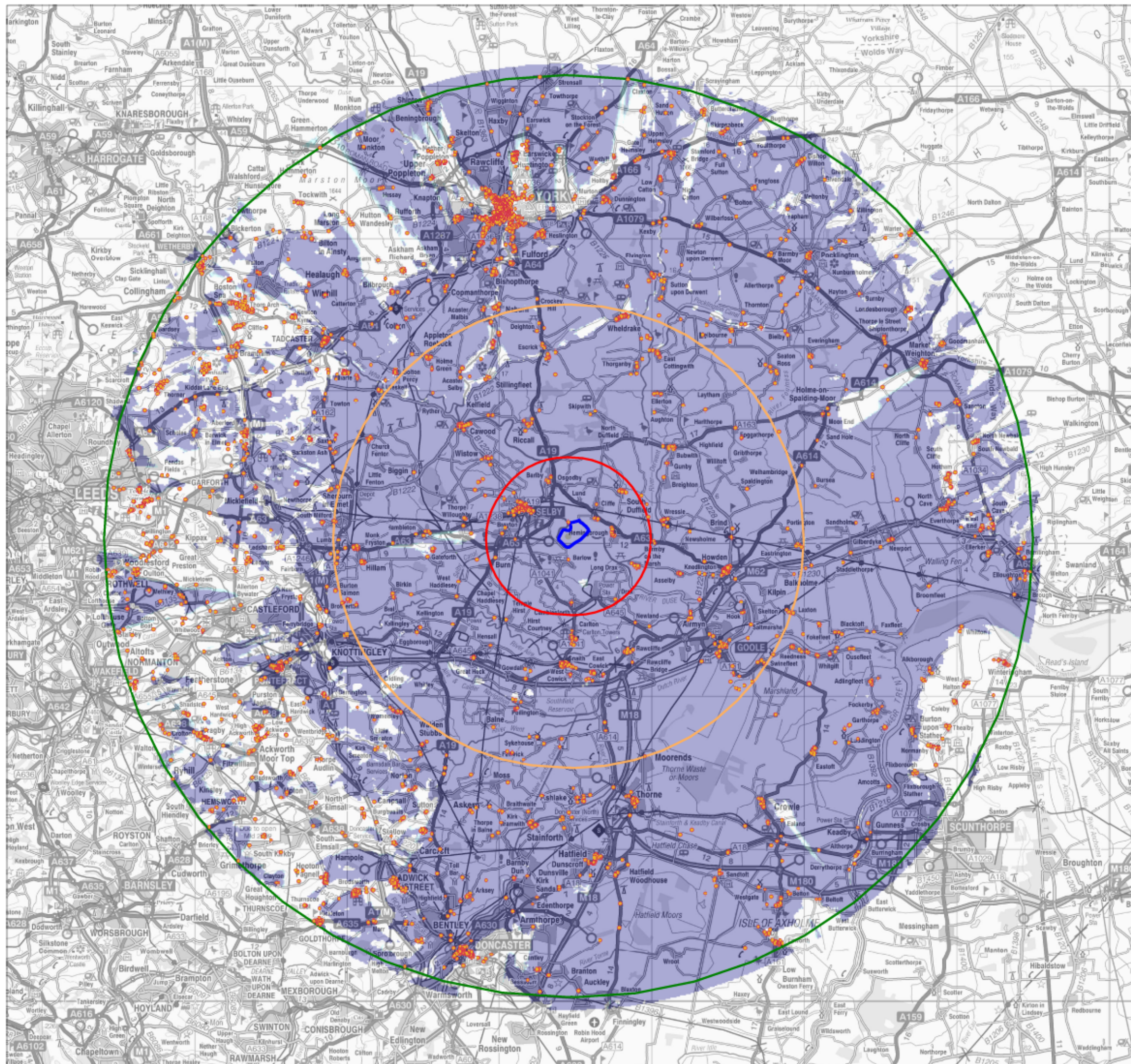
**ARCUS**  
 Unit R6, Riverside Block  
 Sheaf Bank Business Park  
 Prospect Road, Sheffield, S2 3EN  
 www.arcus.group.sheffield.ac.uk  
 Tel: 0114 2225108  
 Fax: 0114 2224346



**Project**  
 Cleek Hall Wind-Farm, Selby

**Title**  
 Location of Scheduled Ancient Monuments within 30km ZTV

<b>Scale</b> 1:250,000@A3	<b>Date</b> June 2009
<b>NGR</b> SE 6456 3040	<b>Drawn</b> R. May
<b>Project No.</b> 1245	<b>Figure No.</b> 8.9



Key:

- Listed building
- Site Boundary
- 5km Site Buffer
- 15km Site Buffer
- 30km Site Buffer
- 1 turbine potentially visible
- 2 turbines potentially visible
- 3 turbines potentially visible
- 4 turbines potentially visible
- 5 turbines potentially visible



Reproduced by permission of Ordnance Survey on behalf of HMSO. © Crown copyright 2009. All rights reserved. Ordnance Survey Licence No. AL50228A.

**ARCUS**  
 Unit R6, Riverside Block  
 Sheaf Bank Business Park  
 Prospect Road, Sheffield, S2 3EN  
 www.arcus.group.sheffield.ac.uk  
 Tel: 0114 2225106  
 Fax: 0114 2224346



**Project**  
**Cleek Hall Wind-Farm, Selby**

**Title**  
**Location of listed buildings within 30km ZTV**

Scale	1:250,000@A3	Date	June 2009
NGR	SE 6456 3040	Drawn	R. May
Project No.	<b>1245</b>	Figure No.	<b>8.10</b>