

APPENDIX 1

Context Listing

WESTFIELD NURSERIES, NORTON 03-06-09

| Context Number | Type | Description |
|----------------|---------|---|
| 1000 | Deposit | 10YR 3/2. Loamy Silt. Mod Compact Loamy Silt. Topsoil |
| 1001 | Deposit | 10YR 4/2. Plastic Clay Silt. Linear Fill |
| 1002 | Cut | Linear Feature |
| 1003 | Cut | 10YR 4/2. Compact Clay Silt. Linear Fill |
| 1004 | Cut | Linear Feature |
| 1005 | Cut | 10YR 5/3. Compact/Friable Sandy Silt. Linear Fill |
| 1006 | Cut | Linear Cut |
| 1007 | Deposit | 10YR 4/2. Compact Sandy Silt. Dump/Spread of Kiln Debris |
| 1008 | Deposit | 10YR 4/3. Plastic Sandy Clay. Deposit containing frequent CBM, Brick and Tile Fragments |
| 1009 | Deposit | 10YR 4/4. Plastic Sandy Clay. Deposit located at North End of Trench 1 |
| 1010 | Deposit | 10YR 5/4. Compact Clay Silt. Linear Dump |
| 1011 | Deposit | 10YR 3/1. Hard Loose Coal. Dump/Spread of Fuel Residue |
| 1012 | Fill | 10YR 4/2. Compact Clay Silt. Field Drain or Service Pipe |
| 1013 | Deposit | 10YR 4/2. Compact Clay Silt. Dump of Brick Rubble, Built up over South Side of Clamp |
| 1014 | Deposit | 10YR 3/1. Friable Loose Coal. Fuel Residue from Firing |
| 1015 | Deposit | 10YR 4/4. Compact Friable Sandy Silt. Dump of Subsoil |
| 1016 | Deposit | 5YR 5/6. Compact Friable Clay. In Situ Burning |
| 1017 | Deposit | 10YR 4/2. Loose Friable Clay Silt. Linear Spread of CBM |
| 1018 | Deposit | 7.5YR 4/3. Friable Sandy Silt. Dumping |
| 1019 | Deposit | 10YR 6/6. Plastic Clay Silt. Subsoil |
| 1020 | Fill | 10YR 4/2. Loose Clay Silt. Modern Field Drain Fill |
| 1021 | Deposit | 10YR 5/6. Hard Friable Clay. In Situ Burning |
| 1022 | Deposit | Mixed Deposit |
| 1023 | Deposit | 10YR 4/2. Plastic Clay Silt. Deposit of Bricks |
| | | |
| 2000 | Deposit | 10YR 3/2 Friable Clay Loam. Topsoil |
| 2001 | Deposit | 10YR 4/2. Friable Loose, Silty Clay Loam. 20th Century Dumping |
| 2002 | Deposit | 5YR 6/1. Plastic Clay. Natural |
| | | |
| 3000 | Deposit | 10YR 3/2. Friable Clay Loam. Modern Topsoil |
| 3001 | Deposit | Mid 20th Century Dumping |
| | | |
| 4000 | Deposit | 10YR 3/3. Friable sandy Loam. Topsoil |

| | | |
|------|---------|---|
| 4001 | Deposit | 10YR 4/4. Friable Silty Sand. Subsoil |
| 4002 | Deposit | 10YR 5/4. Friable Clayey Sand. CBM Dump in edge of Quarry Pit |
| 4003 | Deposit | 10YR 5/6. Friable Clayey Sand. Quarry Fill |
| 4004 | Deposit | 10YR 4/6. Friable Silty Sand. Silt Lense in Quarry 4012 |
| 4005 | Deposit | 10YR 5/4. Friable Sand. Dumped Material in Quarry 4012 |
| 4006 | Deposit | 10YR 5/6 - 6/6. Plastic Sand. Dump Material in 4012 |
| 4007 | Deposit | 10YR 5/6. Friable Sand. Dump in Quarry 4012 |
| 4008 | Deposit | 10YR 6/6. Plastic Clay. Dumped Material |
| 4009 | Deposit | 10YR 3/3. Plastic Clay. Clay Dump in Quarry 4012 |
| 4010 | Deposit | 10YR 5/4. Plastic Silty Sand. Dumped Material in 4012 |
| 4011 | Deposit | 10YR 4/8. Friable Silty Sand |
| 4012 | Cut | Quarry Pit |
| | | |
| 5000 | Deposit | 10YR 3/2. Friable Sandy Loam. Topsoil |
| 5001 | Deposit | Subsoil |
| 5002 | Deposit | Natural |
| | | |
| 6000 | Deposit | 10YR 3/2. Plastic Clay Loam. Modern Turfsoil |
| 6001 | Deposit | 10YR 4/1. Plastic Silty Clay. Subsoil Deposit |
| 6002 | Deposit | 10YR. Compact Sandy Silt. Ditch Fill |
| 6003 | Cut | Linear Cut Segment in West Part of Trench 6 |
| 6004 | Deposit | 5YR 4/4. Friable Silty Sand. Area of in Situ Scorching or Burning |
| 6005 | Deposit | Dump of Kiln Debris |
| | | |
| 7000 | Deposit | 10YR 3/2. Friable Silty Loam. Topsoil |
| 7001 | Deposit | 10YR 5/4. Plastic Silty Clay. Dumping |
| 7002 | Deposit | 10YR 3/1. Friable Clay Silt. Dumping of Debris from Clamp Kilns |
| 7003 | Deposit | 10YR 5/4. Plastic Silty Clay. Dumping |
| 7004 | Deposit | 10YR 4/1. Compact Clay. Dump of Clay used in Brick Making |
| 7005 | Deposit | 10YR 6/6. Compact Silty Sand. Redeposited Natural Sand |
| 7006 | Deposit | 10YR 5/4. Plastic Silty Clay. Continuation of Linear Feature seen in Trench |
| 7007 | Deposit | 5YR 4/4. Friable Silty Clay. Scorching In Situ |
| 7008 | Deposit | 10YR 4/2. Friable Clay Silt. Distinct Dump into Linear Cut |
| 7009 | Deposit | 10YR 5/6. Very Compact Silty Sandy Clay. Compacted Mixed Deposit |
| 7010 | Cut | Cut of Linear Feature |
| 7011 | Deposit | 10YR 6/4. Compact Sandy Clay. Fill of 7012 Cut by Later Feature 7010 |
| 7012 | Cut | Cut of Service Trench |
| 7013 | Deposit | 2.5YR 4/4. Friable Sand. Dump |
| 7014 | Deposit | 10YR 3/6. Friable Sand. Levelled Dump |
| 7015 | Deposit | 7.5YR 5/2. Plastic Sandy Clay. Stand Still Horizon |
| 7016 | Deposit | 10YR 5/6. Plastic Clayey Sand. Levelling / Dump Deposit |
| 7017 | Deposit | 7.5YR 5/2. Friable Sand. Stand Still Horizon |

| | | |
|------|---------|--|
| 7018 | Deposit | 10YR 5/8. Friable Sand. Contaminated Natural Sand |
| 7019 | Deposit | 10YR 4/6. Friable Sand. Mixed Material |
| 7020 | Deposit | 10YR 3/6. Plastic Silty Clayey Sand. Dumped Material |
| 7021 | Deposit | 10YR 3/3. Soapey Silt Clayey Sand. Dump Deposit 7023 |
| 7022 | Deposit | 10YR 4/4. Soapey Silty Clayey Sand. Natural |
| 7023 | Cut | Backfilled Quarry Pit |
| 7024 | Deposit | 10YR 4/2. Silty Clay Sand. Secondary Fill of Cut 7010 |
| 7025 | Deposit | 5YR 3/3. Compact Sand. Scorched Deposit |
| 7026 | Deposit | 10YR 5/6. Friable Silty Sandy Clay. Dumped Deposit |
| 7027 | Deposit | 10YR 6/3. Fairly Soft Mixed Sand and Clay. Sandy Deposit with CBM |
| | | |
| 8000 | Deposit | 10YR 3/2. Clay Loam. Topsoil |
| 8001 | Deposit | Mid 20 Century Dumping |
| | | |
| 9000 | Deposit | Grey. Friable Sandy Clay Loam. Topsoil |
| 9001 | Deposit | Pale Grey Brown. Friable Silty Sand. Subsoil |
| 9002 | Deposit | 10YR 6/4. Friable Silty Sandy Clay. Top Fill of 9004 with Finds of Modern - Late Post medieval Brick, Tile and Glass Fragments |
| 9003 | Deposit | 10YR 6/3. Friable Silty Sand. Fill of Service Trench |
| 9004 | Cut | Cut of Service Trench |
| 9005 | Deposit | 2.5YR 5/6 Red. Fairly Compact Sand. Scorched/reddened Sand In Situ Burning at the base of Clamp Kiln |
| 9006 | Deposit | 10YR 5/6. Loose Friable Silty Sand. Fill of Linear Feature |
| 9007 | Cut | Fairly Recent Linear Feature |
| 9008 | Deposit | Dumping into Pit |
| 9009 | Cut | Large Pit |
| 9010 | Deposit | 2.5YR. Compacted Sand. Black Scorched Compacted Sand Forming Base of possible Clamp Kiln |
| 9011 | Deposit | 2.5YR 3/3. Fairly Soft Sand. Lowest of 3 Scorched Deposits within apparent Cut 9013 |
| 9012 | Deposit | 10YR 5/4. Soft Sand. Primary Fill of Brick Kiln Cut 9013 |
| 9013 | Cut | Cut at Base of Brick Kiln |
| 9014 | Deposit | 10YR 5/6. Friable Medium Sand. Dumping |
| 9015 | Deposit | 10YR 5/2. Friable Sandy Silt. Dumping of Topsoil |
| 9016 | Deposit | 10YR 5/6. Friable Medium Fine Sand. Dumping into Pit |
| 9017 | Deposit | 10YR 5/3. Friable Silty Sand. Dump of Topsoil and Broken Tile Fragments |
| 9018 | Deposit | 10YR 5/6. Friable Medium Sand. Dumping into Pit |
| 9019 | Deposit | 10YR 5/3. Friable Sandy Silt. Dump of Topsoil |
| 9020 | Deposit | 10YR 5/6. Friable Medium Silty Sand. Dumping into Pit |
| 9021 | Deposit | Dump of Waste CBM Fragments |
| 9022 | Deposit | 10YR 5/4. Friable Medium Sand. Earliest Dump into Large Pit |
| 9023 | Cut | Large Pit. Possibly for Clay or Sand extraction |

| | | |
|-------|-----------|---|
| 10000 | Deposit | 10YR 3/2. Friable Clay Loam. Topsoil |
| 10001 | Deposit | 10YR 4/2. Clayey Loam. 1950's Dumping of Domestic Debris |
| | | |
| 11000 | Deposit | 10YR 3/2. Friable Clay Loam. Topsoil |
| 11001 | Deposit | Mid 20th Century Dumping |
| | | |
| 12000 | Deposit | 10YR 3/2. Plastic Compact Silty Clay. Topsoil |
| 12001 | Deposit | 10YR 5/4. Medium Friable Coarse Sand. Dumping of Redeposited Natural into Space E of Wall 12003 |
| 12002 | Deposit | 5YR 5/6 - 7.5YR 6/4. Friable Medium Sand. Dumping of Burnt Waste |
| 12003 | Structure | Blocking Wall |
| 12004 | Structure | Structure. Repair to Wall After Deposition of 12002 |
| 12005 | Deposit | 10YR 5/1. Compact Plastic Clay. Clay Along North Edge of Wall |
| 12006 | Deposit | 10YR 3/2. Plastic Loamy Clay. Robbing of part of Wall Represented by |
| 12007 | Structure | East Edge of Wall in Final Phase |
| 12008 | Deposit | 10YR 8/2. Friable Sandy Mortar. Fill of Foundation Trench |
| 12009 | Cut | Foundation Trench |
| 12010 | Structure | Brick Wall |
| 12011 | Deposit | 10YR 5/1. Compact Plastic Clay. Fill of Post Setting |
| 12012 | Cut | Posthole |
| 12013 | Structure | Brick Wall |
| 12014 | Deposit | 10YR 3/2. Friable Loamy Clay. Modern Field Drain Fill |
| 12015 | Structure | Brick Built Steps |
| 12016 | Structure | Brick Built Steps |
| 12017 | Structure | Floor (Of Sunken structure) |

APPENDIX 2

Finds Catalogue

Westfield Nurseries, Norton 03.06.09

Evaluation Trench 1

| Context | Type | Total | Description | Weight | Spot date |
|---------|---------------------------|-------|--|--------------|----------------------|
| 1001 | Ceramic Building Material | 8 | 8 tile fragments | 3095 | ? |
| 1003 | Ceramic Building Material | 4 | 2 brick fragments tile fragments | 2 1471 | 18th |
| 1005 | Ceramic Building Material | 9 | 2 brick fragments tile fragments | 7 1823 | ?18th |
| 1009 | Ceramic Building Material | 21 | 6 brick fragments tile fragments | 15 20335 | Early/mid 18th |
| 1010 | Ceramic Building Material | 19 | 12 brick fragments tile fragments | 7 8920 | Late 17th/early 18th |
| 1013 | Ceramic Building Material | 5 | 5 brick fragments | 4800 | Early/mid 18th |
| 1015 | Ceramic Building Material | 4 | 1 brick fragment tile fragments | 3 726 | ? |
| 1017 | Ceramic Building Material | 36 | 6 tile fragments (retained - 30 discarded) | 1990 (+6010) | Early/mid 18th |
| 1018 | Ceramic Building Material | 21 | 20 brick fragments tile fragment | 1 16642 | Early/mid 18th |

Evaluation Trench 2

| Context | Type | Total | Description | Weight | Spot date |
|---------|-------|-------|--|--------|-----------|
| 2001 | Glass | 2 | Pop bottle. Clear glass. Screw top - 2 threads(cap - Clarkes Ltd, Scarbro). 2 seams. Embossed WILKINSON MALTON | 1116 | 20th |
| | | | Milk bottle. Clear glass. 2 seams. Rim broken. Blue transfer. Only part clear Ex.....M DIARY MALTON. Base FCC .1 Z | | 20th |

| | | | | | |
|--|---------|---|---|-----|--|
| | Pottery | 1 | Stone ware bottle. F.J. ROWELL AXMINSTER | 536 | |
| | Metal | 1 | Water bottle - WWII edition | 446 | |

Evaluation Trench 4

| Context | Type | Total | Description | Weight | Spot date |
|---------|---------------------------------|-------|--|------------|----------------------|
| 4002 | Ceramic Building Material | 19 | 15 brick fragments tile fragments | 4 15870 | late 17th |
| | Glass | 1 | Wine bottle. Dark green glass rim fragment. | 4 | |
| 4005 | Ceramic Building Material | 7 | 7 brick fragments | 338 | ?18th |
| 4007 | Ceramic Building Material | 4 | 1 brick fragment tile fragments | 3 3479 | late 17th/early 18th |
| 4009 | Ceramic Building Material | 5 | 5 brick fragments | 1950 | late 17th/early 18th |
| 4010 | Ceramic Building Material | 8 | 8 brick fragments | 1070 | late 17th/early 18th |

Evaluation Trench 6

| Context | Type | Total | Description | Weight | Spot date |
|---------|---------------------------------|-------|-------------------------------------|------------|-----------|
| 6002 | Ceramic Building Material | 6 | 3 brick fragments tile fragments | 3 3730 | late 19th |
| 6005 | Ceramic Building Material | 17 | 5 brick fragments tile fragments | 12 4685 | late 19th |

Evaluation Trench 7

| Context | Type | Total | Description | Weight | Spot date |
|--------------|---------------------------------|-------|---------------------------------------|-----------|------------------|
| 7002 West | Ceramic Building Material | 21 | 19 brick fragments tile fragments | 2 4595 | Early - mid 18th |
| 7002 East | Ceramic Building Material | 7 | 3 brick fragments 4 tile fragments | 2470 | Early 18th |
| | Ceramic Building Material | 1 | 1 brick waster | 940 | |

| | | | | | |
|------|---------------------------|----|---|------|----------------|
| 7009 | Ceramic Building Material | 21 | 21 brick fragments | 3817 | Early/mid 18th |
| | Pottery | 5 | 1 rim sherd body sherds 3 1 base sherds | 20 | |

| | | | | | |
|------|---------------------------|---|-------------------------------------|-----------|------|
| 7011 | Ceramic Building Material | 8 | 6 brick fragments tile fragments | 2 1763 | 19th |
|------|---------------------------|---|-------------------------------------|-----------|------|

| | | | | | |
|------|---------------------------|----|---|-----------|------|
| 7019 | Ceramic Building Material | 15 | 11 brick fragments tile fragments | 4 4075 | 18th |
| | Clay Pipe | 1 | Bowl & stem | 8 | |
| | Metal | 1 | Iron nail - square head rectangular shank | 68 | |

| | | | | | |
|------|---------------------------|----|--------------------------------------|-----------|-----------|
| 7020 | Ceramic Building Material | 21 | 14 brick fragments tile fragments | 7 5547 | Late 18th |
|------|---------------------------|----|--------------------------------------|-----------|-----------|

| | | | | | |
|------|---------------------------|---|-------------------|-----|--------------------|
| 7027 | Ceramic Building Material | 4 | 4 brick fragments | 930 | late 17/early 18th |
|------|---------------------------|---|-------------------|-----|--------------------|

Evaluation Trench 9

| Context | Type | Total | Description | Weight | Spot date |
|---------|---------------------------|-------|-------------------------------------|-----------|-----------|
| 9002 | Ceramic Building Material | 10 | 5 brick fragments tile fragments | 5 1928 | 19th |

| | | | | | |
|------|---------------------------|---|------------------------------------|----------|-----------|
| 9003 | Ceramic Building Material | 3 | 1 brick fragment tile fragments | 2 350 | 19th/20th |
|------|---------------------------|---|------------------------------------|----------|-----------|

| | | | | | |
|------|---------------------------|---|-----------------------------------|----------|------|
| 9006 | Ceramic Building Material | 2 | 1 brick fragment tile fragment | 1 832 | 17th |
|------|---------------------------|---|-----------------------------------|----------|------|

| | | | | | |
|------|---------------------------|---|-------------------|------|----------------------|
| 9008 | Ceramic Building Material | 3 | 3 brick fragments | 1360 | late 17th/early 18th |
|------|---------------------------|---|-------------------|------|----------------------|

| | | | | | |
|------|---------------------------|---|-------------------|-----|----------------------|
| 9010 | Ceramic Building Material | 2 | 2 brick fragments | 336 | late 17th/early 18th |
|------|---------------------------|---|-------------------|-----|----------------------|

| | | | | | |
|------|---------------------------|----|-------------------|------|------|
| 9017 | Ceramic Building Material | 11 | 11 tile fragments | 5575 | 18th |
| | Pottery | 2 | body sherds | 6 | |

| | | | | | |
|------|---------------------------|---|------------------|----|--|
| 9018 | Ceramic Building Material | 1 | 1 brick fragment | 20 | |
|------|---------------------------|---|------------------|----|--|

| | | | | | |
|------|---------------------------|---|------------------------------------|-----------|----------------------|
| 9021 | Ceramic Building Material | 5 | 4 brick fragments tile fragment | 1 2411 | late 17th/early 18th |
|------|---------------------------|---|------------------------------------|-----------|----------------------|

Evaluation Trench 10

| Context | Type | Total | Description | Weight | Spot date |
|---------|---------|-------|---|--------|-----------|
| 10001 | Glass | 1 | Bottle. Crown top. 2 seams, embossed HOPE & ANCHOR BREWERIES LTD. Brown Glass. Base 937 G | 426 | 20th |
| | Pottery | 1 | Coronation Mug. June 2nd 1953. Biltens of England | 220 | mid 20th |

Evaluation Trench 11

| Context | Type | Total | Description | Weight | Spot date |
|---------|---------|-------|---|--------|-----------|
| 11001 | Glass | 1 | Milk bottle. Clear glass. 2 seams. Black transfer.NEYNOTTS DIARY NORTON. Base U883 C2 UGB | 302 | mid 20th |
| | Ceramic | 2 | Rack. | 84 | 20th |
| | | | GPO equipment cover | 668 | |

Evaluation Trench 12

| Context | Type | Total | Description | Weight | Spot date |
|---------|---------------------------|-------|-------------------------|--------|-----------|
| 12001 | Ceramic Building Material | 1 | 1 tile fragment | 24 | ? |
| 12003 | Ceramic Building Material | 1 | 1 complete brick - BS 3 | 1525 | 19th |
| 12004 | Ceramic Building Material | 1 | 1 complete brick - BS 1 | 825 | 19th |
| 12011 | Ceramic Building Material | 1 | 1 brick fragment | 446 | late 19th |

APPENDIX 3

Archive Listing

WESTFIELD NURSERIES, NORTON 03-06-09

| Drawing Number | Scale | Description |
|----------------|-------|---|
| 1 | 1:20 | Plan of Linear Segment Cut 6002/6003 |
| 2 | 1:20 | Plan of Deposit 6004 |
| 3 | 1:20 | Plan of Deposit 6005 |
| 4 | 1:50 | Location Plan Trench 6 |
| 5 | 1:20 | South Facing Section Trench 6 |
| 6 | 1:20 | Trench 12 Plan Square 0/0 |
| 7 | 1:20 | Trench 12 Plan Square 0/5 |
| 8 | 1:20 | Trench 12 Plan Square 5/0 |
| 9 | 1:20 | Trench 12 Plan Square 5/5 |
| 10 | 1:10 | Trench 12 South East Facing Section |
| 11 | 1:10 | South Facing Section 12009 |
| 12 | 1:20 | Plan of Brick Structures 12015, 12016, 12017, 12010 and 12003 |
| 13 | 1:10 | West Facing Elevation of Brick Steps 12015 and 12016 |
| 14 | 1:10 | East Facing Elevation of Wall 12003 |
| 15 | 1:10 | South Facing Elevation of Wall 12010 |
| 16 | 1:20 | North Facing Section of Trench 12 |
| 17 | 1:10 | North East Facing Section 9004 & 9013 |
| 18 | 1:20 | Plan of Service Trench & Brick Kiln Base 9004, 9005 and 9013 |
| 19 | 1:20 | Plan of Brick Kiln Base 9005, 9010, 9011 and 9013 |
| 20 | 1:20 | Plan of Brick Kiln Base 9005, 9010, 9011 and 9013 |
| 21 | 1:20 | Linear 9004 |
| 22 | 1:20 | Linear 9004 |
| 23 | 1:20 | Linear 9004 |
| 24 | 1:20 | Plan of Linears 9006 & 9009 |
| 25 | 1:20 | Plan of Linears 9007 & 9009 |
| 26 | 1:20 | Plan of Trench 9 |
| 27 | 1:20 | Plan of Trench 9 |
| 28 | 1:20 | Plan of Trench 9 |
| 29 | 1:10 | West Facing Section of Large Pit 9023 |
| 30 | 1:20 | Plan of Cut 9023 |
| 31 | 1:20 | Sondage through 9014 |
| 32 | 1:10 | North West Facing Section 9007 |
| 33 | 1:10 | North East Facing Section 9007 & 9009 |
| 34 | 1:10 | West Facing Section Contexts 7000-7005 |
| 35 | 1:50 | Plan of South East Part of Trench 7 |
| 36 | 1:20 | Plan of Western Half of Trench 4 |
| 37 | 1:20 | Plan of Eastern Half of Trench 4 |
| 38 | 1:20 | Section Through Quarry 4012 |
| 39 | 1:20 | Section Through Quarry 4012 North Facing Section |
| 40 | 1:20 | Section Through Quarry Trench 5 Facing West |

| | | |
|----|------|--|
| 41 | 1:20 | Plan of Trench 5 North |
| 42 | 1:50 | Plan of North East Part of Trench 7 |
| 43 | 1:50 | Plan of North West Part of Trench 7 |
| 44 | 1:50 | Plan of South West Part of Trench 7 |
| 45 | 1:10 | South Facing Section North West Corner of Trench 7 |
| 46 | 1:10 | South Facing Section Feature 7010 |
| 47 | 1:10 | South East Facing Section, Service Trench 7012 |
| 48 | 1:10 | South West Facing Section, Intersection 7010 & 7012 |
| 49 | 1:20 | Plan 7009 & 7010 |
| 50 | 1:20 | Trench 5 South |
| 51 | 1:10 | North Facing Section Linear Cut 1006 |
| 52 | 1:10 | South Facing Section of Linears 1002 and 1004 |
| 53 | 1:50 | Plan of Linears 1002 and 1004 |
| 54 | 1:50 | Plan of Linear Fills 1001 and 1003 |
| 55 | 1:50 | Plan of Linear & Dump 1005/1006 and 1007 |
| 56 | 1:50 | Plan Trench 1 Square 110/210 |
| 57 | 1:50 | Plan Trench 1 Square 110/220 |
| 58 | 1:50 | Plan Trench 1 Square 100/200 and Deposits |
| 59 | 1:50 | Plan Trench 1 Square 100/210 and Deposits |
| 60 | 1:50 | Plan Trench 1 Square 100/220 and Deposits |
| 61 | 1:20 | Trench 1 :Plan of Box Section at Northern End of Site |
| 62 | 1:10 | Trench 1 East Facing Section |
| 63 | 1:20 | East Facing Trench Section 1015, 1016, 1017, 1018, 1019 & 1020 |

APPENDIX 4

Photographic Listing

WESTFIELD NURSERIES 03-06-09

Type: B & W

Film Number: 1114

| Date | No | Description | Facing |
|-----------|----|-------------------------|--------|
| 6/15/2009 | 1 | Identifier | |
| 6/15/2009 | 14 | Trench 2 | North |
| 6/15/2009 | 15 | Trench 2 Section | West |
| 6/15/2009 | 16 | Trench 8 | North |
| 6/15/2009 | 17 | Trench 8 Section | West |
| 6/16/2009 | 18 | Trench 10 | North |
| 6/16/2009 | 19 | Trench 10 Section | West |
| 6/16/2009 | 20 | Trench 11 East | North |
| 6/16/2009 | 21 | Trench 11 East Section | West |
| 6/16/2009 | 22 | Trench 11 North | West |
| 6/16/2009 | 23 | Trench 11 North Section | North |
| 6/16/2009 | 24 | Trench 3 | North |
| 6/16/2009 | 25 | Trench 3 Section | West |
| 6/16/2009 | 26 | Trench 4 | East |
| 6/16/2009 | 27 | Trench 4 | West |
| 6/19/2009 | 28 | Trench 1 | West |
| 6/19/2009 | 29 | Trench 6 | East |
| 6/22/2009 | 30 | Linear | North |
| 6/22/2009 | 31 | Linear | North |
| 6/22/2009 | 32 | Burnt Area | South |
| 6/22/2009 | 33 | Burnt Area | South |
| 6/22/2009 | 34 | Deposit | West |
| 6/22/2009 | 35 | Deposit | West |
| 6/24/2009 | 36 | Trench 12 Structure | West |
| 6/24/2009 | 37 | Trench 12 Structure | West |

Type: COLOUR SLIDE

Film Number: 1115

| Date | No | Description | Facing |
|-----------|----|------------------|--------|
| 6/15/2009 | 1 | Identifier | |
| 6/15/2009 | 14 | Trench 2 | North |
| 6/15/2009 | 15 | Trench 2 Section | West |
| 6/15/2009 | 16 | Trench 8 | North |
| 6/15/2009 | 17 | Trench 8 Section | West |

| | | | |
|-----------|----|-------------------------|-------|
| 6/16/2009 | 18 | Trench 10 | North |
| 6/16/2009 | 19 | Trench 10 Section | West |
| 6/16/2009 | 20 | Trench 11 East | North |
| 6/16/2009 | 21 | Trench 11 East Section | West |
| 6/16/2009 | 22 | Trench 11 North | West |
| 6/16/2009 | 23 | Trench 11 North Section | North |
| 6/16/2009 | 24 | Trench 3 | North |
| 6/16/2009 | 25 | Trench 3 Section | West |
| 6/16/2009 | 26 | Trench 4 | East |
| 6/16/2009 | 27 | Trench 4 | West |
| 6/19/2009 | 28 | Trench 1 | West |
| 6/19/2009 | 29 | Trench 6 | East |
| 6/22/2009 | 30 | Linear | North |
| 6/22/2009 | 31 | Linear | North |
| 6/22/2009 | 32 | Burnt Area | South |
| 6/22/2009 | 33 | Burnt Area | South |
| 6/22/2009 | 34 | Deposit | West |
| 6/22/2009 | 35 | Deposit | West |
| 6/24/2009 | 36 | Trench 12 Structure | West |
| 6/24/2009 | 37 | Trench 12 Structure | West |

Type: B & W

Film Number: 1118

| Date | No | Description | Facing |
|-----------|----|---------------------------------------|-----------|
| 6/24/2009 | 1 | Identifier | |
| 6/24/2009 | 2 | Trench 12 After Cleaning | NorthWest |
| 6/24/2009 | 3 | Trench 12 After Cleaning | NorthWest |
| 6/24/2009 | 4 | Trench 12 After Cleaning | SouthWest |
| 6/24/2009 | 5 | Trench 12 After Cleaning | SouthWest |
| 6/24/2009 | 6 | Trench 12 Mortar Foundation | North |
| 6/24/2009 | 7 | Trench 12 Mortar Foundation | North |
| 6/25/2009 | 8 | Trench 12 Post Setting | NorthWest |
| 6/25/2009 | 9 | Trench 12 Post Setting | NorthWest |
| 6/25/2009 | 10 | Trench 12 Mortar Footing | North |
| 6/25/2009 | 11 | Trench 12 Mortar Footing | North |
| 6/25/2009 | 12 | Walls Showing After removal of 12001 | West |
| 6/25/2009 | 13 | Walls Showing After removal of 12001 | West |
| 6/25/2009 | 14 | Walls Revealed After removal of 12001 | North |
| 6/25/2009 | 15 | Walls Revealed After removal of 12001 | North |
| 6/29/2009 | 16 | Trench 9 After Cleaning | NorthWest |
| 6/29/2009 | 17 | Trench 9 After Cleaning | NorthWest |
| 6/29/2009 | 18 | Trench 9 Burnt Area | West |
| 6/29/2009 | 19 | Trench 9 Burnt Area | West |
| 6/29/2009 | 20 | Trench 9 After Cleaning | SouthWest |
| 6/29/2009 | 21 | Trench 9 After Cleaning | SouthWest |

| | | | |
|-----------|----|---|-----------|
| 6/29/2009 | 22 | Trench 7 After Cleaning | North |
| 6/29/2009 | 23 | Trench 7 After Cleaning | North |
| 6/29/2009 | 24 | Trench 7 After Cleaning | NorthEast |
| 6/29/2009 | 25 | Trench 7 After Cleaning | NorthEast |
| 6/30/2009 | 26 | Trench 4 Section through Sand Quarry | East |
| 6/30/2009 | 27 | Trench 4 Section through Sand Quarry | West |
| 6/30/2009 | 28 | Trench 4 Section through Quarry West | East |
| 6/30/2009 | 29 | Trench 4 Section through Quarry | South |
| 6/30/2009 | 30 | Trench 9 Service Trench 9004 | NorthEast |
| 6/30/2009 | 31 | Trench 9 Service Trench 9004 | NorthEast |
| 6/30/2009 | 32 | Intersection of Linears | SouthWest |
| 6/30/2009 | 33 | Intersection of Linears | SouthWest |
| 7/1/2009 | 34 | Service Trench 9004 and Burnt Deposits 9005 | NorthEast |
| 7/1/2009 | 35 | Service Trench 9004 and Burnt Deposits 9005 | NorthEast |
| 7/1/2009 | 36 | Trench 5 After Cleaning | South |
| 7/1/2009 | 37 | Trench 5 After Cleaning | South |

Type: COLOUR SLIDE

Film Number: 1125

| Date | No | Description | Facing |
|-------------|-----------|---------------------------------------|---------------|
| 6/24/2009 | 1 | Identifier | |
| 6/24/2009 | 2 | Trench 12 After Cleaning | NorthWest |
| 6/24/2009 | 3 | Trench 12 After Cleaning | NorthWest |
| 6/24/2009 | 4 | Trench 12 After Cleaning | SouthWest |
| 6/24/2009 | 5 | Trench 12 After Cleaning | SouthWest |
| 6/24/2009 | 6 | Trench 12 Mortar Foundation | North |
| 6/24/2009 | 7 | Trench 12 Mortar Foundation | North |
| 6/25/2009 | 8 | Trench 12 Post Setting | NorthWest |
| 6/25/2009 | 9 | Trench 12 Post Setting | NorthWest |
| 6/25/2009 | 10 | Trench 12 Mortar Footing | North |
| 6/25/2009 | 11 | Trench 12 Mortar Footing | North |
| 6/25/2009 | 12 | Walls Showing After removal of 12001 | West |
| 6/25/2009 | 13 | Walls Showing After removal of 12001 | West |
| 6/25/2009 | 14 | Walls Revealed After removal of 12001 | North |
| 6/25/2009 | 15 | Walls Revealed After removal of 12001 | North |
| 6/29/2009 | 16 | Trench 9 After Cleaning | NorthWest |
| 6/29/2009 | 17 | Trench 9 After Cleaning | NorthWest |
| 6/29/2009 | 18 | Trench 9 Burnt Area | West |
| 6/29/2009 | 19 | Trench 9 Burnt Area | West |
| 6/29/2009 | 20 | Trench 9 After Cleaning | SouthWest |
| 6/29/2009 | 21 | Trench 9 After Cleaning | SouthWest |
| 6/29/2009 | 22 | Trench 7 After Cleaning | North |
| 6/29/2009 | 23 | Trench 7 After Cleaning | North |
| 6/29/2009 | 24 | Trench 7 After Cleaning | NorthEast |
| 6/29/2009 | 25 | Trench 7 After Cleaning | NorthEast |

| | | | |
|-----------|----|---|-----------|
| 6/30/2009 | 26 | Trench 4 Section through Sand Quarry | East |
| 6/30/2009 | 27 | Trench 4 Section through Sand Quarry | West |
| 6/30/2009 | 28 | Trench 4 Section through Quarry West | East |
| 6/30/2009 | 29 | Trench 4 Section through Quarry | South |
| 6/30/2009 | 30 | Trench 9 Service Trench 9004 | NorthEast |
| 6/30/2009 | 31 | Trench 9 Service Trench 9004 | NorthEast |
| 6/30/2009 | 32 | Intersection of Linears | SouthWest |
| 6/30/2009 | 33 | Intersection of Linears | SouthWest |
| 7/1/2009 | 34 | Service Trench 9004 and Burnt Deposits 9005 | NorthEast |
| 7/1/2009 | 35 | Service Trench 9004 and Burnt Deposits 9005 | NorthEast |
| 7/1/2009 | 36 | Trench 5 After Cleaning | South |
| 7/1/2009 | 37 | Trench 5 After Cleaning | South |

Type: DIGITAL

| Date | No | Description | Facing |
|-------------|-----------|------------------------------------|----------------|
| 6/15/2009 | 1 | Trench 2 | North |
| 6/15/2009 | 2 | Trench 2 Section | West |
| 6/15/2009 | 3 | Trench 8 | North |
| 6/15/2009 | 4 | Trench 8 Section | West |
| 6/16/2009 | 5 | Trench 10 | West |
| 6/16/2009 | 6 | Trench 10 Section | North |
| 6/16/2009 | 7 | Trench 11 East | North |
| 6/16/2009 | 8 | Trench 11 East Section | West |
| 6/16/2009 | 9 | Trench 11 North | West |
| 6/16/2009 | 10 | Trench 11 North Section | North |
| 6/16/2009 | 11 | Trench 3 | North |
| 6/16/2009 | 12 | Trench 3 Section | West |
| 6/16/2009 | 13 | Trench 4 | East |
| 6/16/2009 | 14 | Trench 4 | West |
| 6/19/2009 | 15 | Trench 6 | West |
| 6/19/2009 | 16 | Trench 6 | East |
| 6/22/2009 | 17 | Linear | North |
| 6/22/2009 | 18 | Burnt Area | North |
| 6/22/2009 | 19 | Deposit | West |
| 6/22/2009 | 20 | Trench 12 Structure | West |
| 6/22/2009 | 21 | Trench 12 Structure After Cleaning | NorthWest |
| 6/22/2009 | 22 | Trench 12 Structure After Cleaning | NorthNorthWest |
| 6/24/2009 | 23 | Trench 12 Structure After Cleaning | SouthWest |
| 6/24/2009 | 24 | Trench 12 Mortar Foundation | North |
| 6/25/2009 | 25 | Trench 12 Post Setting | NorthWest |
| 6/25/2009 | 26 | Trench 12 Mortar Footing | North |
| 6/25/2009 | 27 | Trench 12 After Removal 12001 | West |
| 6/29/2009 | 28 | Trench 9 After Cleaning | NorthWest |

| | | | |
|-----------|----|---|-----------|
| 6/29/2009 | 29 | Trench 9 Burnt Area | West |
| 6/29/2009 | 30 | Trench 9 After Cleaning | SouthWest |
| 6/29/2009 | 31 | Trench 7 After Cleaning | North |
| 6/29/2009 | 32 | Trench 7 After Cleaning | NorthEast |
| 6/30/2009 | 33 | Trench 4 Section through Sand Quarry | East |
| 6/30/2009 | 34 | Trench 4 Section through Sand Quarry | East |
| 6/30/2009 | 35 | Trench 4 Section through Sand Quarry | East |
| 6/30/2009 | 36 | West Facing Section Trench 4 | East |
| 6/30/2009 | 37 | West Facing Section Trench 4 | East |
| 6/30/2009 | 38 | West Facing Section Trench 4 | East |
| 6/30/2009 | 39 | West Facing Section Trench 4 | East |
| 6/30/2009 | 40 | West Facing Section Trench 4 | East |
| 6/30/2009 | 41 | North Facing Section Trench 4 | South |
| 6/30/2009 | 42 | East Facing Section Trench 4 | West |
| 6/30/2009 | 43 | Trench 9 Service Trench 9004 | NorthEast |
| 6/30/2009 | 44 | Trench 9 Service Trench 9004 | NorthEast |
| 6/30/2009 | 45 | Linear Intersection | SouthWest |
| 6/30/2009 | 46 | Service Trench 90043 Burnt Deposit 9005 | NorthEast |
| 6/30/2009 | 47 | Service Trench 90043 Burnt Deposit 9005 | NorthEast |
| 7/1/2009 | 48 | Trench 5 After Cleaning | South |
| 7/1/2009 | 49 | Trench 5 After Cleaning | North |
| 7/2/2009 | 50 | Large Cut | NorthEast |
| 7/2/2009 | 51 | Large Cut | NorthEast |

Type: B & W

Film Number: 1123

| Date | No | Description | Facing |
|----------|----|--|-----------|
| 7/1/2009 | 1 | Trench 5 After Cleaning | South |
| 7/1/2009 | 2 | Trench 5 After Cleaning | South |
| 7/1/2009 | 3 | Large Cut | NorthEast |
| 7/1/2009 | 4 | Large Cut | NorthEast |
| 7/1/2009 | 5 | Large Cut | NorthEast |
| 7/1/2009 | 6 | Large Cut | NorthEast |
| 7/6/2009 | 7 | Trench 7 Deposits at North-East Corner of Trench | East |
| 7/6/2009 | 8 | Trench 7 Deposits at North-East Corner of Trench | East |
| 7/6/2009 | 9 | Trench 7 Deposits at North-West Corner of Trench | North |
| 7/6/2009 | 10 | Trench 7 Deposits at North-West Corner of Trench | West |
| 7/6/2009 | 11 | Cut 7010 & Deposit 7009 | South |
| 7/6/2009 | 12 | Cut 7010 & Deposit 7009 | South |
| 7/6/2009 | 13 | Service Trench 7012 | NorthEast |
| 7/6/2009 | 14 | Service Trench 7012 | NorthEast |
| 7/6/2009 | 15 | CBM Filled Linears | North |
| 7/8/2009 | 16 | CBM Filled Linears | North |
| 7/8/2009 | 17 | Linear Box Section | South |
| 7/8/2009 | 18 | Linear Box Section | South |

| | | | |
|-----------|----|--|-----------|
| 7/8/2009 | 19 | Section through 1010 & 1011 | North |
| 7/8/2009 | 20 | Post Removal of Deposits 1008 & 1009 (sondage) | North |
| 7/8/2009 | 21 | Post Removal of Deposits 1008 & 1009 (sondage) | North |
| 7/8/2009 | 22 | Rubble Spread and Deposit | NorthWest |
| 7/11/2009 | 23 | Rubble Spread and Deposit | NorthWest |
| 7/11/2009 | 24 | Post Removal of 1018 & 1019 | South |

Type: Col Slide

Film Number:

| Date | No | Description | Facing |
|-------------|-----------|--|---------------|
| 7/1/2009 | 1 | Trench 5 After Cleaning | South |
| 7/1/2009 | 2 | Trench 5 After Cleaning | South |
| 7/1/2009 | 3 | Large Cut | NorthEast |
| 7/1/2009 | 4 | Large Cut | NorthEast |
| 7/1/2009 | 5 | Large Cut | NorthEast |
| 7/1/2009 | 6 | Large Cut | NorthEast |
| 7/6/2009 | 7 | Trench 7 Deposits at North-East Corner of Trench | East |
| 7/6/2009 | 8 | Trench 7 Deposits at North-East Corner of Trench | East |
| 7/6/2009 | 9 | Trench 7 Deposits at North-West Corner of Trench | North |
| 7/6/2009 | 10 | Trench 7 Deposits at North-West Corner of Trench | West |
| 7/6/2009 | 11 | Cut 7010 & Deposit 7009 | South |
| 7/6/2009 | 12 | Cut 7010 & Deposit 7009 | South |
| 7/6/2009 | 13 | Linear Feature 7012 | NorthEast |
| 7/6/2009 | 14 | Linear Feature 7012 | NorthEast |
| 7/6/2009 | 15 | CBM Filled Linears | North |
| 7/8/2009 | 16 | CBM Filled Linears | North |
| 7/8/2009 | 17 | Linear Box Section | South |
| 7/8/2009 | 18 | Linear Box Section | South |
| 7/8/2009 | 19 | Section through 1010 & 1011 | North |
| 7/8/2009 | 20 | Post Removal of Deposits 1008 & 1009 (sondage) | North |
| 7/8/2009 | 21 | Post Removal of Deposits 1008 & 1009 (sondage) | North |
| 7/8/2009 | 22 | Rubble Spread and Deposit | NorthWest |
| 7/11/2009 | 23 | Rubble Spread and Deposit | NorthWest |
| 7/11/2009 | 24 | Post Removal of 1018 & 1019 | South |

Type: DIGITAL

| Date | No | Description | Facing |
|-------------|-----------|--|---------------|
| 7/6/2009 | 1 | Trench 7 Deposits at North-East Corner of Trench | East |
| 7/6/2009 | 2 | Trench 7 Deposits at North-West Corner of Trench | North |
| 7/6/2009 | 3 | Trench 7 Deposits at North-West Corner of Trench | West |
| 7/6/2009 | 4 | Cut 7010 & Deposit 7009 | South |
| 7/6/2009 | 5 | Cut 7010 & Deposit 7009 | South |
| 7/6/2009 | 6 | Linear Feature 7012 | NorthEast |
| 7/6/2009 | 7 | Linear Feature 7012 | NorthEast |
| 7/6/2009 | 8 | Detail of Bricks within 7009 | West |

| | | | |
|-----------|----|--|-----------|
| 7/6/2009 | 9 | Detail of Bricks within 7009 | West |
| 7/8/2009 | 10 | CBM Filled Linears | North |
| 7/8/2009 | 11 | Linear Box Section | South |
| 7/8/2009 | 12 | Tiles within Deposit 1009 | North |
| 7/8/2009 | 13 | Tiles within Deposit 1009 | North |
| 7/8/2009 | 14 | Section through 1010 & 1011 | North |
| 7/8/2009 | 15 | Section through 1010 & 1011 | South |
| 7/8/2009 | 16 | Post Removal of Deposits 1008 & 1009 | NorthWest |
| 7/8/2009 | 17 | Post Removal of Deposits 1008 & 1009 | South |
| 7/8/2009 | 18 | Post Removal of Deposits 1008 & 1009 | South |
| 7/8/2009 | 19 | Post Removal of Deposits 1008 & 1009 | South |
| 7/10/2009 | 20 | Rubble Spread & Deposit | NorthWest |
| 7/10/2009 | 21 | Post Removal of Deposits 1018 & 1019 | South |
| 7/10/2009 | 22 | Brick Surface 1013 | West |
| 7/10/2009 | 23 | Detail of Surface 1016 | West |
| 7/10/2009 | 24 | Post Removal of 1019 | West |
| 7/10/2009 | 25 | Post Removal of 1019 North End Sondage | West |
| 7/10/2009 | 26 | Post Removal of 1017 | West |
| 7/10/2009 | 27 | West Facing Section 1017 | East |
| 7/10/2009 | 28 | Post Removal 1018 & 1019 | North |

APPENDIX 5

Westfield Nurseries, Norton
03.06.09

Ceramic Building Materials

Introduction

A large sample of material was submitted for investigation from 33 contexts and weighing over 132kg. This material comprised of fragmentary bricks and pan and plain tiles (roof tile). There was also an example of a decorative brick.

Comments

Brick: All of the bricks were handmade, and predominantly fragmentary, however, complete examples were recovered from a structure in Evaluation Trench 12.

The assemblage is of great importance as it has allowed the study of a 'rural' brick making industry in this part of North Yorkshire which according to cartographic and trade directory information was of late 19th century date, however the assemblage shows that the manufacture of bricks and tile commenced on the site in the late 17th/early 18th century and continued through into the early 20th century.

The assemblage illustrates the development of hand made brick manufacture from the earliest examples in the assemblage in Evaluation Trenches 1, 4, 7 and 9 (Contexts 1010, 4002, 4007, 4009, 4010, 7027, 9008, 9010 and 9021) to the latest in Evaluation Trenches 6 and 9 (Contexts 6002, 6005, 9002 and 9003).

The manufacturing process for both bricks and tiles commences with the "winning" (or extracting) of the clay usually close to the manufacturing site. The preparation of the clay involved the grinding of the clay into a powder to remove stones and reduce the size of organic inclusions. The material was then placed in a soaking pit. This tempering step is also known "pugging" and from the mid 1800's horse drawn pug mills were employed.

The changes in the fabric of the bricks reflect the better processing of the clay and refinement of the inclusions. Limestone is the most common inclusion observed in the recovered assemblage both in brick and tile examples, however, the occurrence of coal is also high and this reflects a common trend of including fuel within the product so as to increase the efficiency of the firing process. A number examples showed that organic matter had also been included as represented by voids in the fabric of the brick and tile.

The clay when taken from the soaking pit or pug mill was then ready for moulding. Four sided rectangular wooden moulds with no base or lid were used to form the bricks. Moulds were placed either directly on the ground or on the brick makers table. Bricks made on the ground are known as "place"

bricks and are of a pre 19th century date examples of this kind of brick were found at the Westfield site as illustrated by examples with vegetation impressions from Contexts 1003 and 4007. In addition there are examples of the development of the brick makers art – where a table was used; a layer of sand coated the table to prevent the base of the mould from sticking; a number of such examples where the underside of the brick still has the fired sand impressions were observed in the assemblage with examples from Contexts 7020 and 9002. Removal of the brick from the mould was aided by the sand 'slop mould' process of which numerous examples were observed within the assemblage (Contexts 1018, 4005 & 7002). With the development of the "kick" on the brick makers table (stock board), thrown clay into the mould could be forced into the corners giving better/sharper edges to the brick without the need for finger pressing. The kick could be inscribed with the name of the brick maker thus identifying the product source. Of particular note is the presence in Context 7011 of an example of an early frog mark. OnlyON survives with a rivet mark.

To remove the excess clay from the top of the mould a stick was used and a number of bow marks have been recorded (Contexts 1018, 4002 & 9002). Finger finishing was noted on a brick from Context 7009. The presence of wire cut marks on a brick from Context 6002 places this example at the end of the hand made process.

The current lack of flue or kiln structures on the site argue for the use of clamp kilns. A clamp kiln was a temporary structure constructed of unfired or green bricks which could be dismantled after firing and which could be erected close to the clay source/preparation areas. A number of bricks exhibit exposure to intense heat and the warped nature and vitrification of some may represent vestiges of the outer wall of the clamp kiln (Context 1009).

Stacking marks were seen on a number of examples (eg 'herringbone' from Contexts 1003, 6002 & 9008; "horizontal" from Contexts 4010, 7020 & 12003; "vertical" from Contexts 1013 and 7002 East; with an example from Context 9021 showing both vertical and horizontal marks. This information sheds light on the setting pattern being used for the firing of the bricks in the kilns and thus elucidates the burning characteristics of the bricks.

The human side of manufacturing process is illustrated by finger and thumb prints on the bricks (Contexts 1018, 4002 & 7009). Animal paw prints on examples from 1013 and 4002 occurred while the bricks were "drying out" prior to firing.

Of note were a number of tally marks observed from bricks in Contexts 4002 – two vertical incised lines and an incised "Y"; and 9002 – two sub circular impressions. These denote firing quotas.

An unusual feature of the Westfield bricks was the employment of a pale yellow slip on bricks predominantly of an 18th century date. This trend was probably to meet local demand for a paler brick than the local clays could provide.

A single example of a decorative brick was recovered from Context 6005.

Pantile : There were two fabrics present in this sample a fine pink/red fabric and a coarser yellow fabric. Pan tile began to be used in Britain during the 17th century and came into common usage by the 18th century. The examples in the sample illustrate the development of the art of tile making from hand made examples through to the evidence of mechanisation, in both the method of manufacture and refining of the clay; as with the brick assemblage the examples recovered predominantly date from the 18th century.

Tile : The plain tile assemblage varied in colour from light reds to yellow and changes little in form. It is not as prolific as brick in the excavated contexts but this could reflect zonal preference on the site for manufacture or more likely that the brick was in higher demand.

Recommendations

After matching with the MAP ceramic building materials fabric collection, much of the undiagnostic pieces could be discarded. However particular good examples of the manufacturing process should be retained and a type series developed for use in any future excavation work at the site.

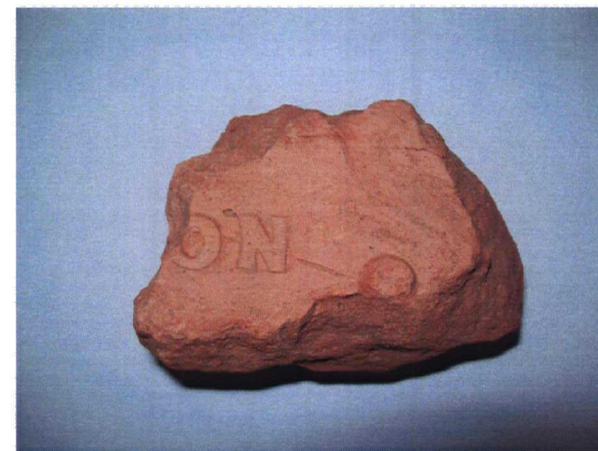
Anne E Finney
17.7.09



An example of a 'Place' brick. Vegetation impressions indicating that the brick was made on the ground. Context 7009.



Example of a slop moulded brick. The brick was formed on a sand coated table to prevent sticking. Context 7002



Example of an early frog moulded brick. Context 7011



Example of wires used to remove the excess clay from the mould. Context 6002



Example of a bow mark produced when excess clay was removed from the mould. Context 4002



Example of 2 bricks fused together, possibly part of a kiln wall. Context 1009



Example of 2 bricks fused together, possibly part of a kiln wall. Context 1009



Example of 'herringbone' stacking marks. Context 1003



Example of 'vertical' stacking mark. Context 7002 East



Example of 'horizontal' stacking mark.
Context 9021



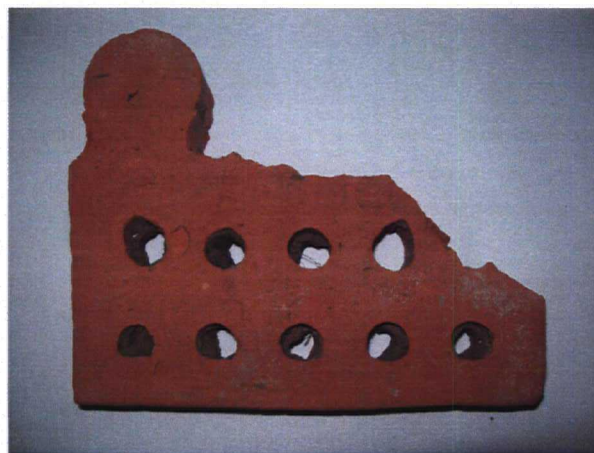
Animal paw print in green brick prior to firing.
Context 9003



Example of slip on brick, the manufacturers
attempt to hide the true colour of the brick.
Context 9021



Example of slip on brick, the manufacturers attempt to hide the true colour of the brick.
Context 9021



Example of a decorative brick. Context 6005



Example of a waste brick, a possible attempt at an early frogged brick. Context 7009