



Plate 25. Rectangular dressed stone block found in rubble fill. Scale 0.5m.



Plate 26. General view of Room 5 before works, looking north-west, scales 2m.



Plate 27. Room 5 after works, looking north-west. Scales 1&2m.



Plate 28. Sub-circular depression to east of Room 5, possible further room or structure, looking south-east. Scales 2m.

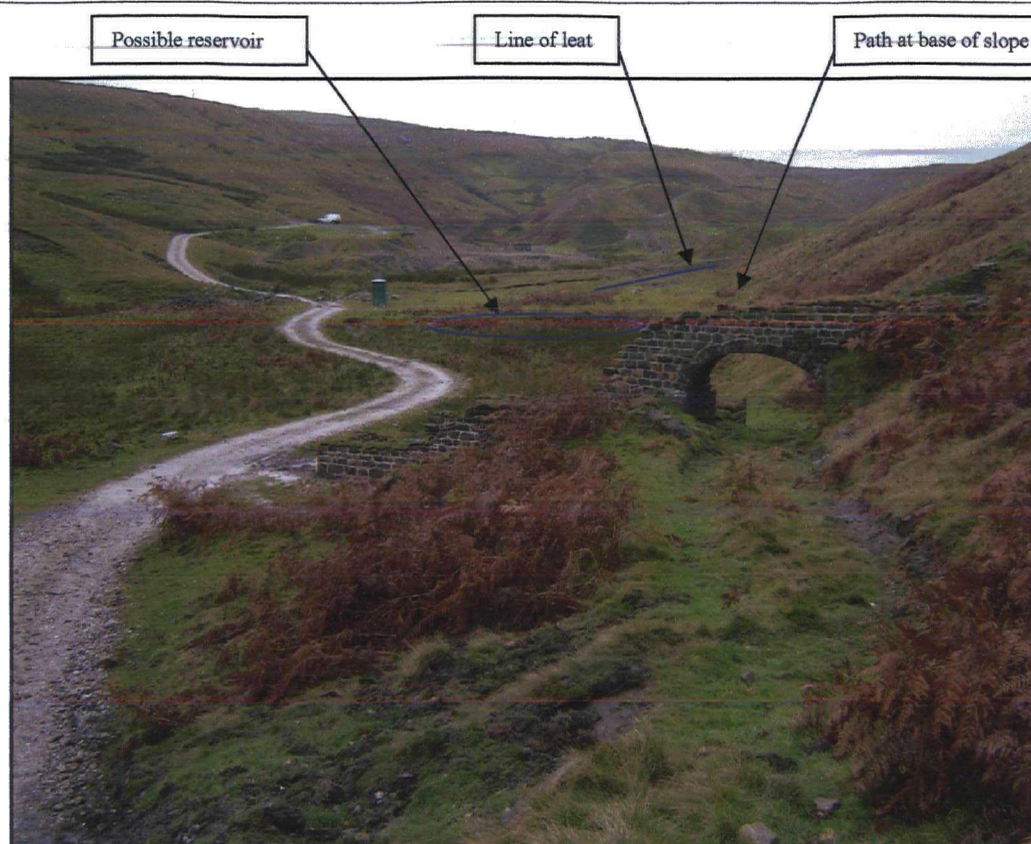


Plate 29. Looking west showing area of darker vegetation which possibly marks a reservoir of some form.



Plate 30a. Providence Smelt Mill from the east (Clough 1980)

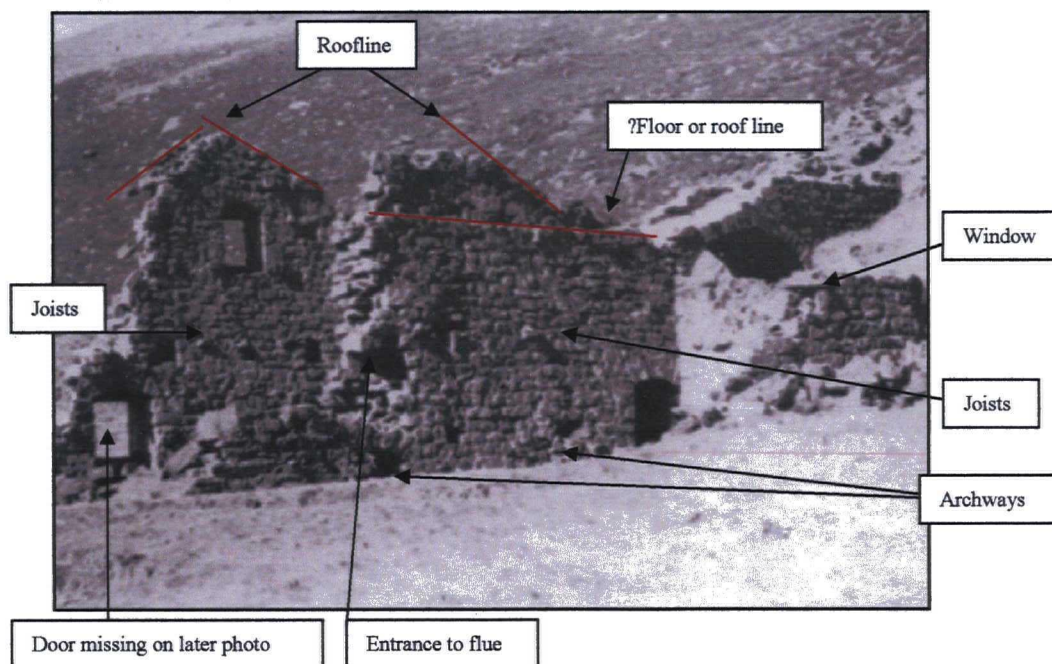


Plate 30b. Providence Smelt Mill from the east with annotations (Clough 1980)



Plate 31a (Y). Providence Smelt Mill from the west (Clough 1980)

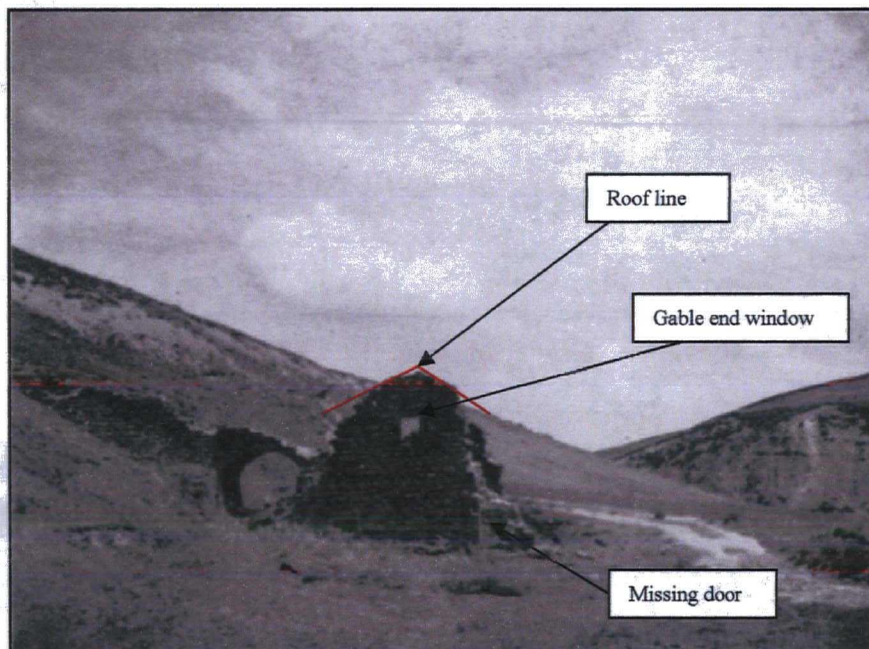


Plate 31b (Y). Providence Smelt Mill from the west with annotations (Clough 1980)



Plate 32. Providence Smelt Mill Flue (M Roe, 2003)

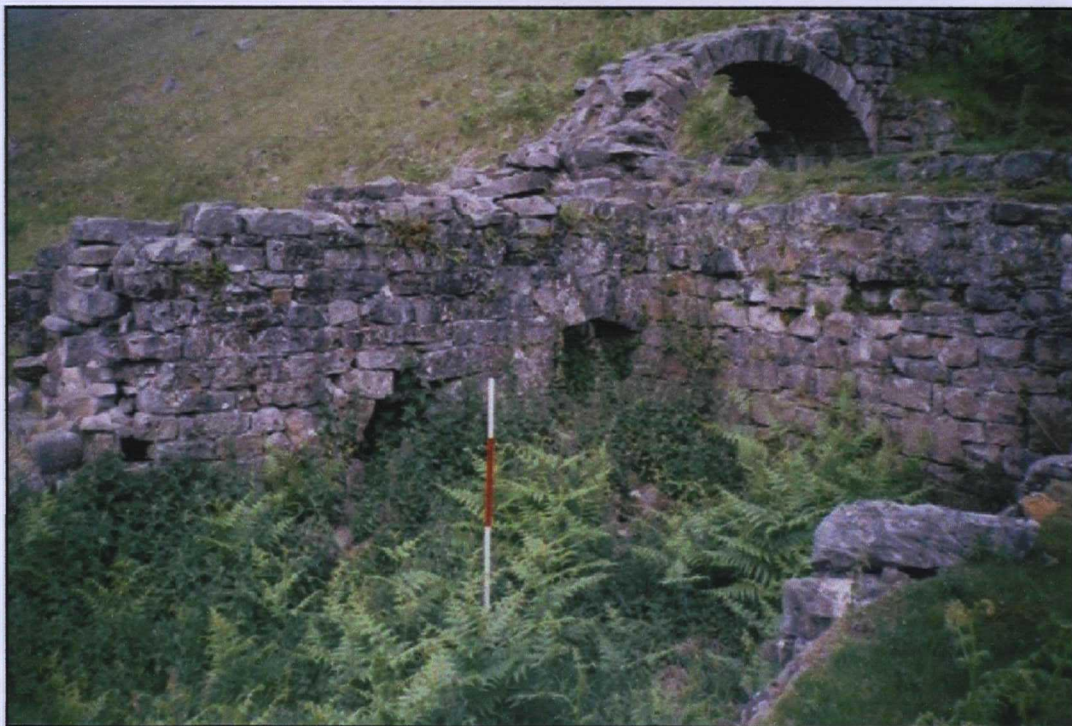


Plate 33. Providence Smelt Mill interior Room 5 (M Roe, 2003)