



Fig. 13. XY trace plot of unprocessed magnetometer data; Block 7 and Block 8 (1:1000 @ A3)

TYPE OF ANOMALY		INTERPRETATION
•	DIPOLAR ISOLATED	FERROUS MATERIAL
■	MAGNETIC DISTURBANCE	FERROUS MATERIAL
■	MAGNETIC ENHANCEMENT	GEOLOGY
—	LINEAR TREND	AGRICULTURAL?



Reproduced from the Ordnance Survey mapping with the permission of the Controller of Her Majesty's Stationery Office. © Crown Copyright. Unauthorised reproduction infringes Crown copyright and may lead to prosecution or civil proceedings. Wakefield Metropolitan District Council licence 100019674, 2010.

© ASWYAS 2010.
Archaeological Services WYAS
PO Box 30, Nephaw Lane South, Morley, LS27 0UG
Tel: 0113 383 7500 Fax: 0113 383 7501

Fig. 14. Interpretation of magnetometer data; Block 7 and Block 8 (1:1000 @ A3)

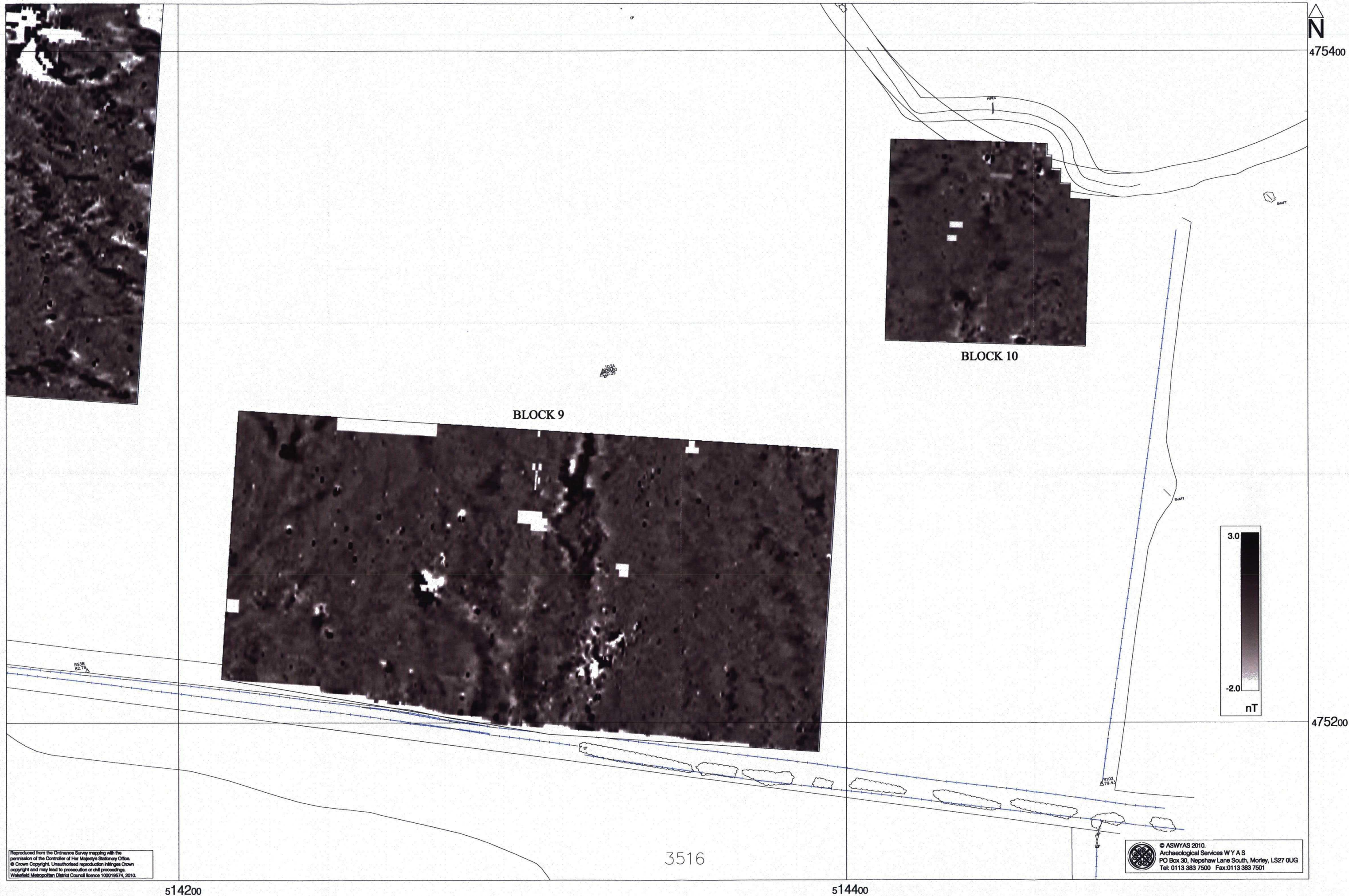


Fig. 15. Processed greyscale magnetometer data; Block 9 and Block 10 (1:1000 @ A3)



Fig. 16. XY trace plot of unprocessed magnetometer data; Block 9 and Block 10 (1:1000 @ A3)

TYPE OF ANOMALY		INTERPRETATION
•	DIPOLAR ISOLATED	FERROUS MATERIAL
●	MAGNETIC DISTURBANCE	FERROUS MATERIAL
■	MAGNETIC ENHANCEMENT	GEOLOGY
—	LINEAR TREND	AGRICULTURAL?

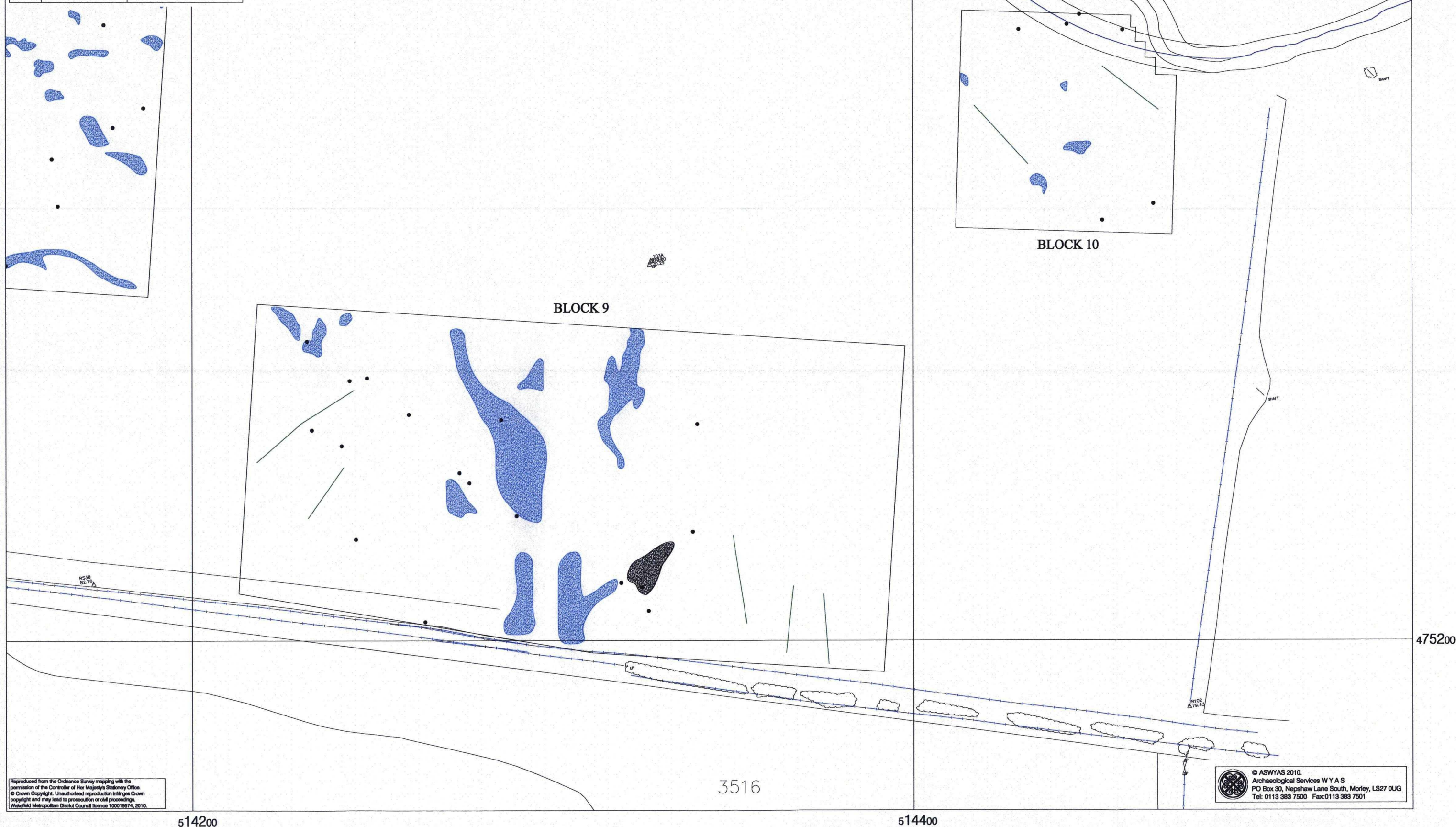


Fig. 17. Interpretation of magnetometer data; Block 9 and Block 10 (1:1000 @ A3)

0 50m

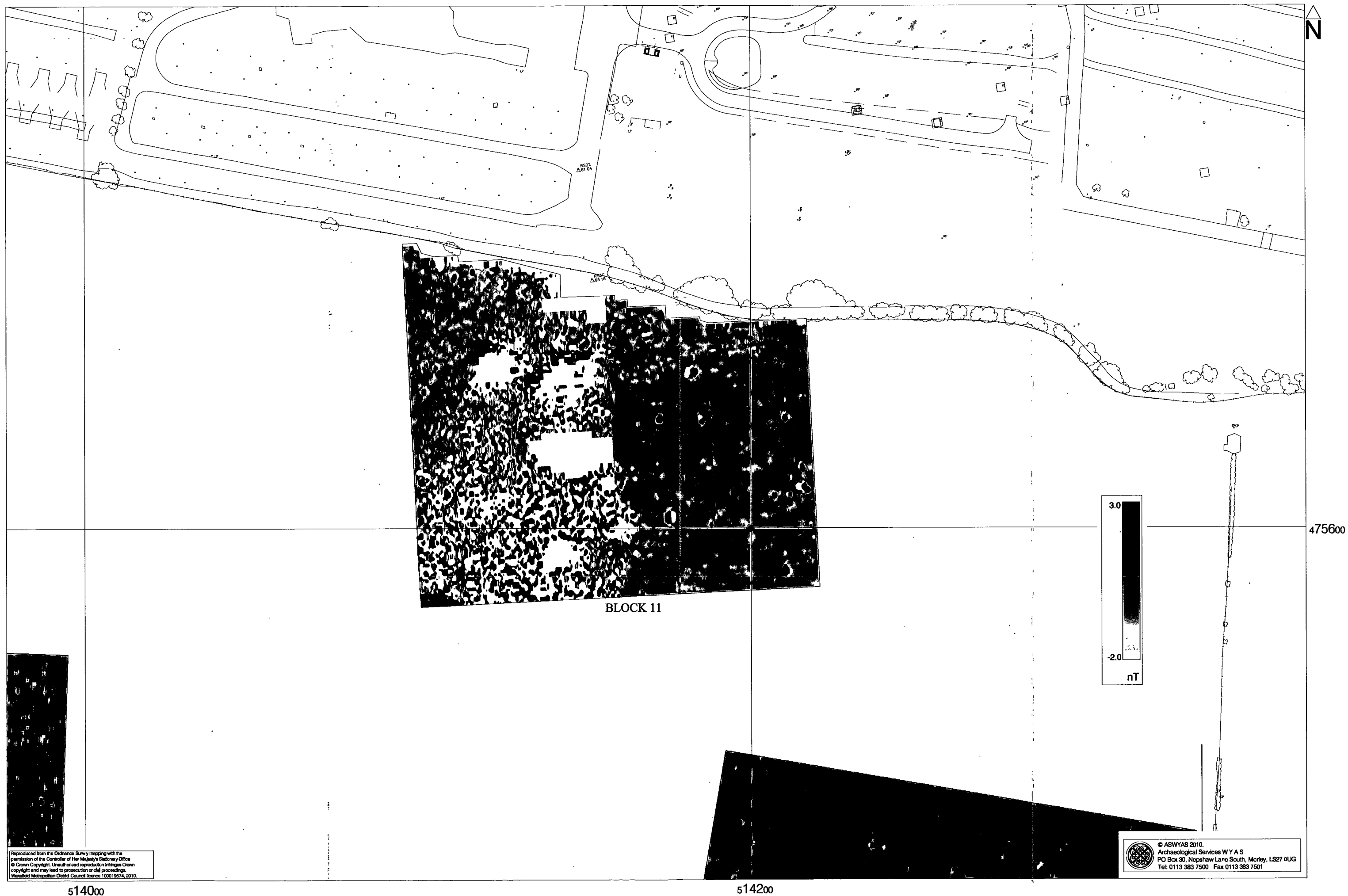


Fig. 18. Processed greyscale magnetometer data; Block 11 (1:1000 @ A3)

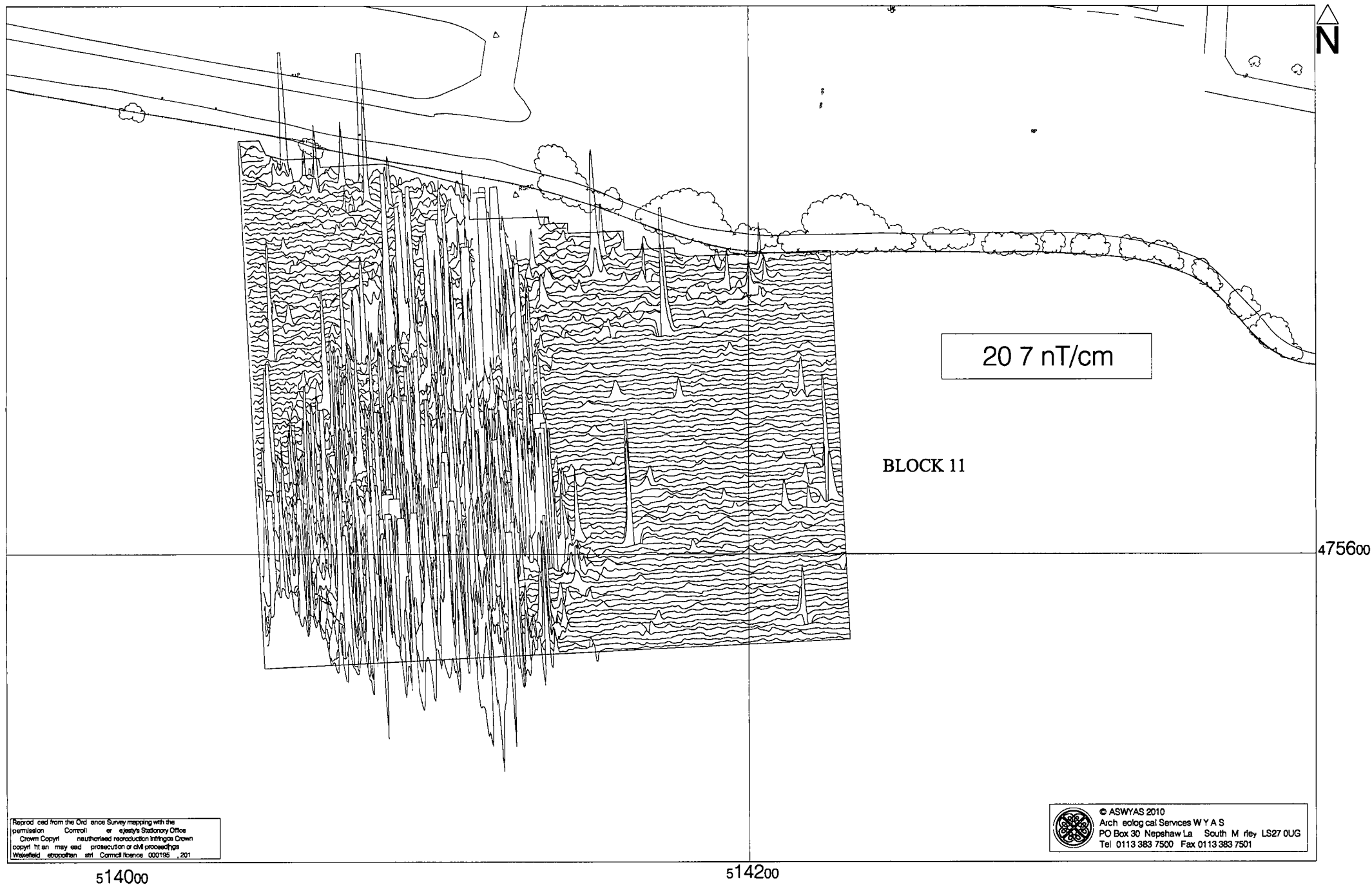


Fig. 19 XY trace plot of unprocessed magnetometer data Block 11 (1 1000 @ A4)

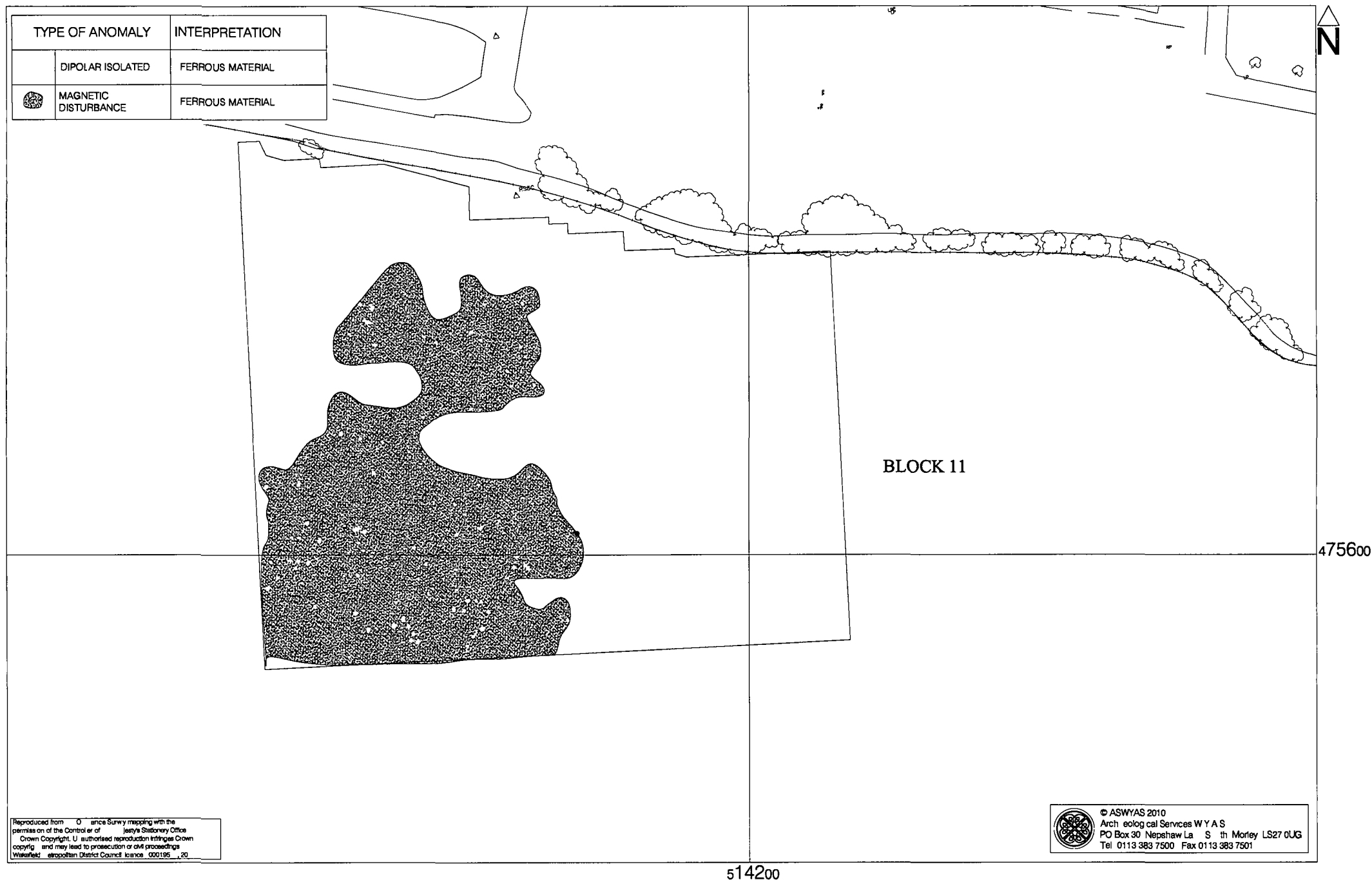


Fig 20 Interpretation of magnetometer data Block 11 (1 1000 @ A4)

Appendix 1 Magnetic survey - technical information

Magnetic Susceptibility and Soil Magnetism

Iron makes up about 6% of the Earth's crust and is mostly present in soils and rocks as minerals such as magnetite and haemetite. These minerals have a weak, measurable magnetic property termed magnetic susceptibility. Human activities can redistribute these minerals and change (enhance) others into more magnetic forms so that by measuring the magnetic susceptibility of the topsoil, areas where human occupation or settlement has occurred can be identified by virtue of the attendant increase (enhancement) in magnetic susceptibility. If the enhanced material subsequently comes to fill features such as ditches or pits, localised isolated and linear magnetic anomalies can result whose presence can be detected by a magnetometer (fluxgate gradiometer).

In general, it is the contrast between the magnetic susceptibility of deposits filling cut features such as ditches or pits and the magnetic susceptibility of topsoils, subsoils and rocks into which these features have been cut, which causes the most recognisable responses. This is primarily because there is a tendency for magnetic ferrous compounds to become concentrated in the topsoil, thereby making it more magnetic than the subsoil or the bedrock. Linear features cut into the subsoil or geology such as ditches that have been silted up or have been backfilled with topsoil will therefore usually produce a positive magnetic response relative to the background soil levels. Discrete features such as pits can also be detected. The magnetic susceptibility of a soil can also be enhanced by the application of heat and the fermentation and bacterial effects associated with rubbish decomposition. The area of enhancement is usually quite large, mainly due to the tendency of discard areas to extend beyond the limit of the occupation site itself and spreading by the plough. An advantage of magnetic susceptibility over magnetometry is that a certain amount of occupational activity will cause the same proportional change in susceptibility, however weakly magnetic is the soil, and so does not depend on the magnetic contrast between the topsoil and deeper layers. Susceptibility survey is therefore able to detect areas of occupation even in the absence of cut features. On the other hand, susceptibility survey is more vulnerable to the masking effects of layers of colluvium and alluvium as the technique using the Bartington system can generally only measure variation in the first 0.15m of ploughsoil.

Types of Magnetic Anomaly

In the majority of instances, anomalies are termed 'positive'. This means that they have a positive magnetic value relative to the magnetic background on any given site. However, some features can manifest themselves as 'negative' anomalies, that, conversely, means that the response is negative relative to the mean magnetic background.

Where it is not possible to give a probable cause of an observed anomaly, a '?' is appended.

It should be noted that anomalies interpreted as modern in origin might be caused by features that are present in the topsoil or upper layers of the subsoil. Removal of soil to an archaeological or natural layer can therefore remove the feature causing the anomaly.

The types of response mentioned above can be divided into five main categories that are used in the graphical interpretation of the magnetic data.

Isolated dipolar anomalies (iron spikes)

These responses are typically caused by ferrous material either on the surface or in the topsoil. They cause a rapid variation in the magnetic response giving a characteristic 'spiky' trace. Although ferrous archaeological artefacts could produce this type of response, unless there is supporting evidence for an archaeological interpretation, little emphasis is normally given to such anomalies, as modern ferrous objects are common on rural sites, often being present as a consequence of manuring.

Areas of magnetic disturbance

These responses can have several causes, often being associated with burnt material, such as slag waste or brick rubble or other strongly magnetised/fired material. Ferrous structures such as pylons, mesh or barbed wire fencing and buried pipes can also cause the same disturbed response. A modern origin is usually assumed unless there is other supporting information.

Linear trend

This is usually a weak or broad linear anomaly of unknown cause or date. These anomalies are often caused by agricultural activity, either ploughing or land drains being a common cause.

Areas of magnetic enhancement/positive isolated anomalies

Areas of enhanced response are characterised by a general increase in the magnetic background over a localised area, whilst discrete anomalies are manifest by an increased response (sometimes only visible on an XY trace plot) on two or three successive traverses. In neither instance is there the intense dipolar response characteristic exhibited by an area of magnetic disturbance or of an 'iron spike' anomaly (see above). These anomalies can be caused by infilled discrete archaeological features such as pits or post holes or by kilns. They can also be caused by pedological variations or by natural infilled features on certain geologies. Ferrous material in the subsoil can also give a similar response. It can often therefore be very difficult to establish an anthropogenic origin without intensive investigation or other supporting information.

Linear and curvilinear anomalies

Such anomalies have a variety of origins. They may be caused by agricultural practice (recent ploughing trends, earlier ridge and furrow regimes or land drains), natural geomorphological features such as palaeochannels or by infilled archaeological ditches.

Methodology **Magnetic Susceptibility Survey**

There are two methods of measuring the magnetic susceptibility of a soil sample. The first involves the measurement of a given volume of soil which will include any air and moisture that lies within the sample and is termed volume specific susceptibility. This method results in a bulk value that is not necessarily fully representative of the constituent components of the sample. For field surveys a Bartington MS2 meter with MS2D field loop is used due to its speed and simplicity. The second technique overcomes this potential problem by taking into account both the volume and mass of a sample and is termed mass specific susceptibility. However, mass specific readings cannot be taken in the field where the bulk properties of a soil are usually unknown and so volume specific readings must be taken. Whilst these values are not fully representative they do allow general comparisons across a site and give a broad indication of susceptibility changes. This is usually enough to assess the susceptibility of a site and evaluate whether enhancement has occurred.

Methodology **Gradiometer Survey**

There are two main methods of using the fluxgate gradiometer for commercial evaluations. The first of these is referred to as **magnetic scanning** and requires the operator to visually identify anomalous responses on the instrument display panel whilst covering the site in widely spaced traverses typically 10m apart. The instrument logger is not used and there is therefore no data collection. Once anomalous responses are identified they are marked in the field with bamboo canes and approximately located on a base plan. This method is usually employed as a means of selecting areas for detailed survey when only a percentage sample of the whole site is to be subject to detailed survey.

The disadvantages of magnetic scanning are that features that produce weak anomalies (less than 2nT) are unlikely to stand out from the magnetic background and so will be difficult to detect. The coarse sampling interval means that discrete features or linear features that are parallel or broadly oblique to the direction of traverse may not be detected. If linear features are suspected in a site then the traverse direction should be perpendicular (or as close as is possible within the physical constraints of the site) to the orientation of the suspected features. The possible drawbacks mentioned above mean that a negative scanning result should be validated by sample detailed magnetic survey (see below).

The second method is referred to as **detailed survey** and employs the use of a sample trigger to automatically take readings at predetermined points typically at 0.25m intervals on zig zag traverses 1m apart. These readings are stored in the memory of the instrument and are later dumped to computer for processing and interpretation. Detailed survey allows the visualisation of weaker anomalies that may not have been detected by magnetic scanning.

During this survey a Bartington Grad601 magnetic gradiometer was used taking readings on the 0-1nT range at 0.25m intervals on zig zag traverses 1m apart within 30m by 30m square

grids. The instrument was checked for electronic and mechanical drift at a common point and calibrated as necessary. The drift from zero was not logged.

Data Processing and Presentation

The detailed gradiometer data has been presented in this report in XY trace and greyscale formats. In the former format the data shown is raw with no processing other than grid biasing having been done. The data in the greyscale images has been interpolated and selectively filtered to remove the effects of drift in instrument calibration and other artificial data constructs and to maximise the clarity and interpretability of the archaeological anomalies.

An XY plot presents the data logged on each traverse as a single line with each successive traverse incremented on the Y axis to produce a stacked plot. A hidden line algorithm has been employed to block out lines behind major spikes and the data has been clipped. The main advantage of this display option is that the full range of data can be viewed dependent on the clip so that the shape of individual anomalies can be discerned and potentially archaeological anomalies differentiated from iron spikes. Geoplot 3 software was used to create the XY trace plots.

Geoplot 3 software was used to interpolate the data so that 3600 readings were obtained for each 30m by 30m grid. The same program was used to produce the greyscale images. All greyscale plots are displayed using a linear incremental scale.

Appendix 2 Survey location information

The site grid was laid out using a Geodimeter 600s total station theodolite and tied in to the comers of buildings and other pemianent landscape features and to temporary reference points (survey marker stakes) that were established and left in place following completion of the fieldwork for accurate geo referencing The locations of the temporary reference points are shown on Figure 2 and the Ordnance Survey grid co ordinates tabulated below The intemal accuracy of the survey grid relative to these markers is better than 0.05m The survey grids were then superimposed onto a map base provided by the client as a best fit to produce the displayed block locations Overall there was a good correlation between the local survey and the digital map base and it is estimated that the average best fit error is better than ±1.5m However it should be noted that Ordnance Survey co ordinates for 1:2500 map data have an error of ±1.9m at 95% confidence This potential error must be considered if co ordinates are measured off for relocation purposes

Station	Easting	Northing
A	513719.8839	475641.0882
B	513696.6047	475485.9164
C	513674.7055	475336.8791
D	513691.3997	475260.4256
F	514064.7596	475410.8470
F	514327.7501	475303.5985
G	514337.4131	475494.1239
H	514190.0534	475477.0889
I	514027.9101	475549.6714

'Archaeological Services WYAS cannot accept responsibility for errors of fact or opinion resulting from data supplied by a third party'

Appendix 3 Geophysical archive

The geophysical archive comprises

- an archive disk containing compressed (WinZip 8) files of the raw data report text (Microsoft Word 2000) and graphics files (Adobe Illustrator CS2 and AutoCAD 2008) files
- a full copy of the report

At present the archive is held by Archaeological Services WYAS although it is anticipated that it may eventually be lodged with the Archaeology Data Service (ADS) Brief details may also be forwarded for inclusion on the English Heritage Geophysical Survey Database after the contents of the report are deemed to be in the public domain (i.e. available for consultation in the relevant Historic Environment Record)

Bibliography

- David A N Linford P Linford and L Martin 2008 *Geophysical Survey in Archaeological Field Evaluation Research and Professional Services Guidelines (2nd edition)* English Heritage
- Gaffney C Gater J and Ovenden S 2002 *The Use of Geophysical Techniques in Archaeological Evaluations* IFA Technical Paper No 6
- Pollington M 2007 *Reighton Sands Golf Course Reighton North Yorkshire Archaeological Desk-based Assessment* ASWYAS report no 1736