

MAP

Archaeological Consultancy Ltd.

SITE: Kirby Misperton, North Yorkshire

CLIENT: Viking UK Gas Ltd

TITLE: Site Location.

Figure 1.

Scale: 1:25,000

DRAWING REF.:

DRAWN BY: TWS

REVISIONS:

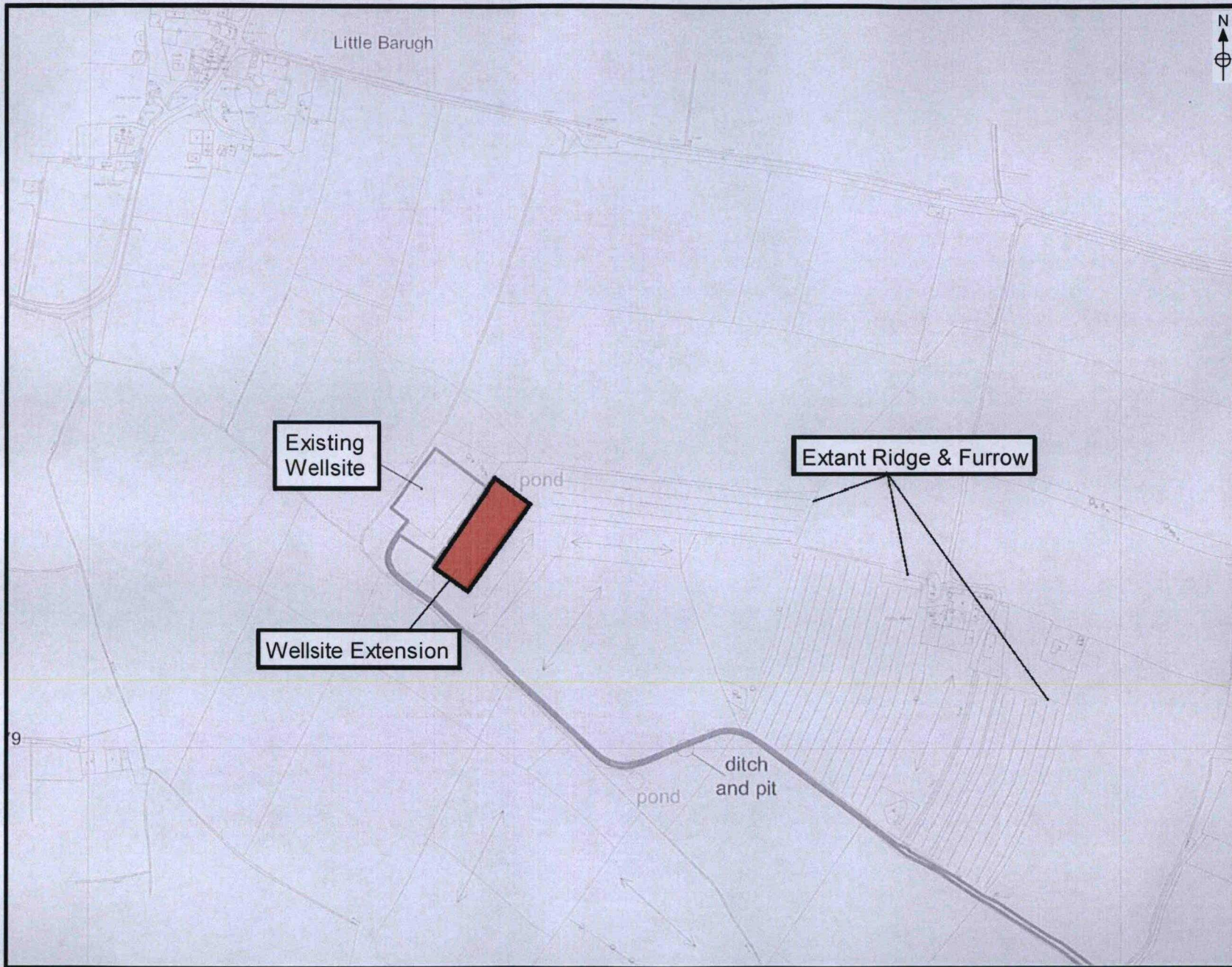


Figure 2 - Area Of Watching Brief



Plate 1. Pre-excavation View. Facing North-east.



Plate 2. Detail of natural clay. Facing North-east.



Plate 3. Drainage trench. Facing North-east.



Plate 4. Ground surface following removal of bund. Facing South-west.



Plate 5. Stripping of site and natural surface. Facing North.



Plate 6. Post-excavation View. Facing North.