

RECEIVED

18 April 2012

DEVELOPMENT MANAGEMENT

MAP
ARCHAEOLOGICAL PRACTICE Ltd.

Low Street
Sherburn in Elmet
North Yorkshire
Phase 2

SE 5023 3326

MAP 5.07.2012

Desk Based Assessment

**MAP
ARCHAEOLOGICAL PRACTICE LTD**



**Low Street
Sherburn in Elmet
North Yorkshire**

**PHASE 2
Residential Development**

Desk Based Assessment

SE 49800 33000

MAP 5.07.2012

Report Prepared By 	Report Authorised By 
Date: 28 th March 2012	Date: 28 th March 2012

**Low Street
Sherburn in Elmet
North Yorkshire**

**PHASE 2
Residential Development**

Desk Based Assessment

SE 49800 33000

Contents	Page
Figure List	2
Non Technical Summary	4
1. Introduction	5
2. Site Description	5
3. Planning Background	6
4. Aims and Objectives	7
5. Methodology	7
6. Policy Context	9
7. Significant Criteria	10
8. Results	12
9. Assessment of Potential Effects	38
10. References and Bibliography	43
11. List of Contributors	46

Figure List	Page
1. Site Location. Scale 1:25,000.	47
2. Proposed Development Phases 2 and 3 with Archaeological Evaluation Areas A-D. Scale 1:6,000.	48
3. Drift Geology and Soils. Scale 1:7,500.	49
4. Monuments on the North Yorkshire HER. Scale 1:12,500.	50
5. Events on the North Yorkshire HER. Scale 1:10,000.	51
6. Designations of the North Yorkshire HER. Scale 12,500.	52
7. Historic Landscape Characterisation. Scale 1:20,000.	53
8. Charter Boundaries in the Medieval Period.	54
9. Enclosure Award Map for Sherburn-in-Elmet, 1770.	55
10. 1824 Estate Map transcribed on the 1850 Edition Ordnance Survey Map. Scale 1:10,560.	56
11. Extract from the 1853 First Edition Ordnance Survey Map. Scale 1:10,560.	57
12. Extract from the 1908 Edition Ordnance Survey Map. Scale 1:10,560.	58
13. Extract from the 1950 Edition Ordnance Survey Map. Scale 1:10,560.	59
14. Extract from the 1967 Edition Ordnance Survey Map. Scale 1:10,000.	60
15. Extract from the 1985 Edition Ordnance Survey Map. Scale 1:10,000.	61
16. Mineral Rights – Coal (c. 1937). Scale 1:10,560.	62
17. Aerial Photographic Cropmarks. Scale 1:25,000.	63
18. Earthwork Survey (MAP 1997). Scale 1:10,560.	64
19. Hedgerow Survey (MAP 1997). Scale 1:10,560.	65

20.	Area A: Intensive Fieldwalking: Flint Artefacts. Scale 1:5,000.	66
21.	Area A: Intensive Fieldwalking: Roman Pottery. Scale 1:5,000.	67
22.	Area A: Intensive Fieldwalking: Medieval Pottery. Scale 1:5,000.	68
23.	Area A: Intensive Fieldwalking: Post-medieval Pottery. Scale 1:5,000.	69
24.	Area A: Intensive Fieldwalking: Modern Pottery. Scale 1:5,000.	70
25.	Geophysical Survey Results: Archaeological Features. Scale 1:5,000.	71
26.	Archaeological Evaluation Trial Trenches. Scale 1:5,000.	72
27.	Engineering Test-pits. Scale 1:5,000.	73
28.	Development Masterplan.	74

**Low Street
Sherburn in Elmet
North Yorkshire**

**PHASE 2
Residential Development**

Desk Based Assessment

SE 49800 33000

Non Technical Summary

This report has been prepared by MAP Archaeological Practice Ltd under instruction from Dacres Commercial acting on behalf of Persimmon Homes and Redrow Homes, to provide a Desk Based Assessment assessing the Historical and Archaeological background and the impact of the Proposed Phase 2 Residential Development at Low street, Sherburn In Elmet in order to provide a description of the significance of the heritage assets affected and the contribution of their setting to that significance, as required by National Planning Policy Framework March 2012.

The Site of the Proposed Works is agricultural land. The proposed works will involve the construction of 498 residential dwellings, access roads, footpaths, open space and the planting of screening trees.

There are no Scheduled Monuments, Registered Battlefields, Listed Buildings within the Proposed Development Area. The Proposed Development Area is described as "Modern Improved Fields derived from the Parliamentary Enclosure of Sherburn" on the North Yorkshire Historic Landscape Characterisation. There are two known monuments on the North Yorkshire Historic Environment Record, both Aerial Photographic Cropmark described as a field system and a trackway. Archaeological Evaluation Work was undertaken between 1997 and 2002 comprised Intensive Fieldwalking, Earthwork Survey, Hedgerow Survey, Geophysical Survey and Archaeological Trial Trenching. The Trial Trenching

uncovered evidence of the Iron Age/Roman-British field system, Medieval, Post-medieval and Modern archaeological features.

1. Introduction

1.1 This Desk-based Assessment was commissioned under instruction from Dacres Commercial, acting on behalf of the Persimmon Homes and Redrow Homes, and was undertaken by MAP Archaeological Practice Ltd for a Proposed Phase 2 Residential Development at Low Street, Sherburn-in-Elmet, North Yorkshire (SE 49800 33000: Fig. 1).

1.2 Archaeological, Historical and Architectural remains are protected by means of Statutory Instruments (including Scheduled Ancient Monument Legislation, Listed Buildings, Designated Conservation Area, National Planning Policy Framework (March 2012).

1.3 There are no Scheduled Ancient Monuments, Listed Buildings or Registered Battlefields within the Proposed Development Area.

1.4 All work was funded by Persimmon Homes and Redrow Homes.

1.5 All Maps within this report have been reproduced from the Ordnance Survey with the permission of the Controller of Her Majesty's Stationery Office, Crown Copyright, Licence No. AL50453A.

2. Site Description

2.1 The Proposed Development Area (Phases 2 and 3: Fig.1 & 12.2) comprises 28 ha, and stands at heights of between 28m A.O.D. and 32m A.O.D. The Phase 2 Development Area is c. 21 hectares in area. The site is located on the south eastern edge of the settlement of Sherburn in Elmet ('Sherburn'). Sherburn is located approximately 25km to the south west of York, 12km due west of Selby and 10km south of Tadcaster on the A162. (Fig.1).

- 2.2 The Proposed Development Area is on soils of the Aberford Soil Association (511a) shallow, locally brashy, well drained calcareous fine loamy soils over limestone of the Permian, Jurassic and Eocene periods (Fig. 3). In the East of the site are slowly permeable seasonally waterlogged stoneless clayey and fine loamy clays of the Foggathorpe 2 Soil Association (712i) overlying glaciolacustrine clay (Mackney et al 1983).
- 2.3 The Proposed Development Area, has been divided for the purpose of this report (Fig. 2). Phase 2 consists 498 dwellings (Areas A and B) .
- 2.4 The eastern boundary is defined by an existing drainage ditch, with a bridged access to the neighbouring fields. To the south are isolated dwellings and farm buildings in a flat open landscape. Large arable fields are bounded by low sparse but well maintained hedgerows and open drainage ditches. To the west, the site has a 370m long frontage onto Low Street, which links Sherburn with South Milford to the south. The western boundary is marked by a low, well maintained field hedgerow with mature trees. To the north the site is bordered by the rear gardens of a relatively modern residential development. To the north-east is the Phase 3 Proposed Development which is bordered to the north by the recently constructed Phase 1 Moor Lane Development (comprising 193 dwellings) which was granted planning permission in 2006).

3. Planning Background

- 3.1 The Phase 1 Development on Moor Lane was granted planning permission in 2006 and has been constructed to the north-east of the Proposed Phase 2 Application Area.
- 3.2 The Phase 2 Outline Planning Application (2011/0893/EIA) for 498 dwellings was refused in February 2012. The current application is for the Phase II

development of 498 dwelling with an additional planning application for Phase 3 (Circa 80-100 houses and link road).

4. Aims and Objectives

4.1 The Cultural Heritage Assessment has been prepared in accordance with best practice guidelines issued by the Institute of Field Archaeologists Standard and Guidance for archaeological desk-based assessment, 3.2.7 (IFA 2001). Consultation has also been undertaken with North Yorkshire County Heritage Services to ensure appropriate mitigation can be proposed.

4.2 An assessment is required that will (1) consider the likely survival of buried archaeological deposits on the site, the likely significance of such deposits and the impact on them of the proposal and (2) assess the historic interest of the standing buildings and their contribution to the area's historic character and will consider the impact of the development proposal.

4.3 The aim of the Heritage Statement is to:

- Identify recorded features of historical and archaeological significance within the study area
- Establish the potential for hitherto unrecorded and unknown sites
- Assess the relative importance of the sites
- Assess the likely impact of the proposed development on the sites
- Make recommendations to mitigate any impact of the development on the sites

5. Methodology

5.1 The following organisations were researched or consulted: -

- I. National Archives;
- II. National Monument Register;

- III. North Yorkshire Record Office;
- IV. North Yorkshire Historic Environment Register; and,
- V. West Yorkshire Archives.

5.2 Extensive consultation has also been undertaken with North Yorkshire County Heritage Services. The Heritage unit have approved the mitigation proposed based on the results of the staged evaluation.

5.3 The following data sources were utilised for assessment:

- I. North Yorkshire Historic Environment Record (HER) entries for 1km around the site;
- II. National Monuments Record;
- III. Listed Building/Conservation records;
- IV. Aerial Photographs;
- V. Scheduled Monuments List;
- VI. English Heritage Register of Historic Parks and Gardens and Register of Battlefields;
- VII. Visual inspection of the site;
- VIII. Plans and maps of the site and its environs, including historical pictorial and surveyed maps and including pre- and post war Ordnance Surveys up to the present day;
- IX. Place and street name evidence;
- X. Trade and Business Directories;
- XI. Historical documents and photographs; and
- XII. Appropriate archaeological and historical journals and books.

6. Policy Context

6.1 Archaeological, Historical and Architectural remains are protected by means of Statutory Instruments (including Scheduled Ancient Monument Legislation, National Planning Policy Framework (March 2012) and by the Selby Local Plan.

6.2 National Planning Policy Framework – 12. Conserving and enhancing the historic environment

6.2.1 NPPF -12 sets out the Government's objectives for the historic environment and rationale for its conservation. It recognises the unique place the historic environment holds in England's cultural heritage and the multiple ways it supports and contributes to the economy, society and daily life. The NPPF also identifies the historic environment as a non-renewable resource. Its fragile and finite nature is a particularly important consideration in planning. Conserving this resource for future generations accords with the principles of sustainable development. Government places a priority on its conservation and has set out tests to ensure that any damage or loss is permitted only where it is properly justified.

6.3 Selby Local Plan (SHB/1B)

6.3.1 The Selby Local Plan states that *"Land off Low Street, Sherburn-in-Elmet, as defined on the Inset Proposals Map, is allocated for residential development in Phase 2 of the Plan in accordance with Policy H2"*. The Proposals must make provision for ten separate items including:

"8) An appropriate archaeological evaluation of the site prior to submission of a planning application".

7. Significant Criteria

7.1 The principal aims of the Heritage Assessment are:-

- I. To identify known cultural heritage and archaeological sites within or in the vicinity of the proposed development;
- II. To identify areas within the application boundary with the potential to contain any previously unrecorded archaeological remains;
- III. To assess the physical and visual effects of the proposed development upon historic buildings or archaeological sites and their settings;
- IV. To propose appropriate mitigation measures which could be built into the development proposals to avoid, reduce or remedy any potential adverse effects identified; and,
- V. To assess the acceptability of the development proposals with respect to cultural heritage and archaeology in relation to local plan policies and national planning guidance.

7.2 Criteria of Sensitivity

7.2.1 The criteria of sensitivity has been assessed in accordance with the following principles:

Table 1: Criteria of Sensitivity

Sensitivity	Type of Heritage Asset
Very High	World Heritage Sites – sites of universal value, importance and significance
High	Designated Heritage Assets as defined in NPPF such as Scheduled Monument, Listed Building, Protected Wreck Site, Registered Park and Garden, Registered Battlefield or Conservation Area
Medium	Undesignated Heritage Sites, such as listed on the County Historical Environment Register
Low	Sites or Buildings which may have some potential interest or significance but which have not been identified by the Local Authority
Negligible	Buildings or sites of no architectural, historical, aesthetic or communal significance

7.3 Significance of Impacts

7.3.1 The significance of impacts has been assessed in accordance with the following principles:

Table 2: Significance of Impacts

Magnitude	Factors in the assessment
Substantial	<p>Very significant impact.</p> <p><i>Adverse Impact-</i> when the development proposals would destroy or significantly compromise the integrity of a regionally or nationally important archaeological site or historic building and mitigation could not remove or modify such effects.</p> <p><i>Beneficial Impact-</i> The proposals would result in effects that improve the historic landscape character and the quality of the archaeological record by detailed recording and increased interpretation and public dissemination.</p>
Moderate	<p>Significant impact.</p> <p><i>Adverse Impact-</i> development proposals would partially damage or compromise but not destroy the integrity of a regional or national important archaeological site or historic building. Adequate mitigation measures can be specified. Impact on the setting of sites, buildings and historic landscapes which would diminish the character, appearance and understanding.</p> <p><i>Beneficial Impact-</i> The proposals would result in effects that fit very well with the historic landscape character enabling the restoration of valued characteristic features.</p>
Minor	<p>Slight impact.</p> <p><i>Adverse Impact-</i> Integrity of regional and national important sites not substantially compromised. Locally significant sites and historic buildings could be destroyed or substantially compromised. However, substantial mitigation measures can be specified.</p> <p><i>Beneficial Impact-</i> The proposals would result in effects that improve the archaeological understanding of the quality and character of the site.</p>
Negligible	<p>Very slight impact.</p> <p>The proposals would have no effect on archaeological sites, historic buildings or historic landscapes.</p>

7.3.2 The significance of effects are summarised below:-

Table 3: Significance of Effects

Sensitivity Impact	Very High	High	Medium	Low	Negligible
Substantial	Substantial	Substantial	Moderate	Minor	Minor
Moderate	Substantial	Substantial	Minor	Minor	Negligible
Minor	Moderate	Moderate	Negligible	Negligible	Negligible
Negligible	Minor	Minor	Negligible	Negligible	Negligible

8. Results

- 8.1 Sherburn is located in the District of Selby in the County of North Yorkshire, which was formerly in the Wapentake of Barkston-Ash in the West Riding of the County of York. There are no listed buildings or scheduled ancient monuments within the Proposed Development Area. There are nine known sites listed on the North Yorkshire Historic Environment Record (HER) within the Development Area, including four relating the Archaeological Evaluations already undertaken for the site.**
- 8.2 Within 1km of the site there are one hundred and eleven sites listed on the North Yorkshire HER including five Listed Buildings. Details of the HER are summarised in Table 12.4, 12.5 and 12.6. Sites are given an individual Historic Environment Record (HER) number and grid reference. The HER Sites are noted as Monuments (MNY numbers), Events (ENY numbers), Designated Sites (DNY numbers) and Historic Landscape Characterisation Sites (HNY numbers). The location of sites is indicated on Figures 4-7.**
- 8.3 There is one scheduled monument listed within 1km of the site (Monument No. 30118, formerly NY564). This heritage asset and its setting will not be affected by the proposed development.**
- 8.4 Extensive archaeological fieldwork has previously been undertaken on the Proposed Development Area.**
- 8.5 A comprehensive evaluation was undertaken by MAP on the proposed development site in 1997. This programme included Field Walking (Area A), Geophysical Survey (Areas A-D) and Trial Trenching (Areas A-D).**

8.6 Aerial Photographic information for the site illustrates the intensity of the activity on the landscape adjacent to the development site; this is even further accentuated by the number and variety of artefacts and archaeological sites, which exist within the site's environs (Figs. 6 & 17).

Table 4. Archaeological Sites on the North Yorkshire Historic Environment Record within the Proposed Application Area

HER Ref. No.	Grid Ref.	Description	Period
Low Street Evaluation ENY11 ENY780 ENY859 ENY4137	SE 50230 33260	Archaeological Evaluation undertaken between 1997 and 2002 including Desk Based Assessment, Fieldwalking, Magnetometer Survey and Archaeological Evaluation Trenches (MAP & Tony Pacitto)	Roman, Medieval, Post-medieval and Modern
MNY10165	SE 496 328	Aerial Photographic Cropmark – Field System	Undated
MNY10166	SE 496 328	Aerial Photographic Cropmark – Trackway	Undated
MNY16719	SE 4963 3294	Trackway	Undated
MNY17156	SE 502 323	Trackway	Undated
HNY5762	SE 488 325	Historic Landscape Characterisation - Modern Improved Fields derived from the Parliamentary Enclosure of Sherburn. 177,81HA	20 th century

Table 5 Archaeological Sites within 1km of the Proposed Application Area identified on the North Yorkshire Historic Environment Record

HER Ref. No.	Grid Ref.	Description	Period
Site of King Aethelstan's Palace, north of All Saints' Church, Church Hill, Sherburn-in-Elmet Monument No. 30118 (NY564); DNY494 MNY10139; MNY10140; MNY10141'	SE 48851 33616	The monument, known as Hall Garth, consists of a number of earthworks, including building platforms, wall lines, ditches, terraces and small quarrying scoops. It is identified as the site of the palace built on land given by King Aethelstan to the Archbishopric of York. The monument lies on a north-facing hillside, the crest of which is occupied by	Anglo-Saxon & Medieval

MNY10142; MNY10143; MNY10144		<p>the parish church. Athelstan was the first king to have control over all of the English after overthrowing the Scandinavian kingdom of York in 927. In 937 he defeated an alliance of Scots and Scandinavians at the Battle of Brunanburh and as thanks for this victory he gave the manors at Sherburn and Cawood to the Archbishop of York. The manor house or palace at Sherburn was a high status site and was subsequently used as a hunting lodge by the Archbishops. There is documentary evidence that there was a wealthy Saxon church associated with the palace and the Domesday Book shows no drop in income for the manor, unlike most other areas of Yorkshire. The Saxon church was replaced c.1100 by a larger church which still stands immediately to the south of the monument, but the palace had fallen into ruin by 1361 when the then Archbishop, John Thoresby, ordered its demolition. The stone from the palace was then used in the building of the choir at York Minster.</p> <p>SCHEDULED ANCIENT MONUMENT</p>	
MNY10132	SE 4915 3360	<p>Sherburn-in-Elmet – Place-name meaning 'bright, clear stream'. Dates from at least the 9th century. A major Religious centre in the kingdom of Elmet. A manuscript dated to 1030AD shows manor controlled a large area. Held by the Archbishop's of York before and after the conquest. Church with 10th century origins.</p>	Anglo-Saxon & Medieval
MNY10150 DNY13582	SE 4935 3377	<p>Former School and Hospital founded by Robert Hungate, now a school. Grade II Listed Building</p>	Post-medieval-Modern
ENY 201 ENY202	SE 4953 3350	The Spinney, Sherburn in Elmet	

		Desk Based Assessment and Trial Evaluation Trenches (MAP 2000)	
MNY24520 ENY3086	SE 49520 33488	The Spinney, Sherburn-in-Elmet – Archaeological Excavations uncovered Neolithic, Iron Age, Roman, Medieval and Post-medieval Remains. (YAT 2005)	Prehistoric, Roman, Medieval & Post-medieval
MNY24138	SE 50 33	Parish Record for Sherburn-in-Elmet 8058	Anglo-Saxon & Medieval
MNY10145	SE 489 339	Aerial Photographic Cropmark – Trackway	Undated
MNY10138 MNY16731 MNY16732	SE 487 335	2 Saxon Architectural Stone Cross Fragments – cemented together	Anglo-Saxon
MNY10278	SE 50 34	Saxon Ring found in field between Aberford and Sherburn – engraved with "EATHELSWITH REGINA"	Anglo-Saxon
MNY10137 MNY16733	SE 488 334	Chapel of St. Mary's and the Holy Angels located in south-east corner of All Saints Churchyard – 13 th to early 16 th century AD	Medieval
MNY10167	SE 493 329	Windmill/Cornmill still in operation in 1845-8	Post-medieval
MNY10283	SE 507 329	Sherburn in Elmet Aircraft Factory (1818-1945)	Modern
MNY26838	SE 486 335	Protected Military Remains: Aircraft crash site, Halifax, Serial number W7806, at Sherburn-in-Elmet (24 th August 1943)	Modern
MNY30670	SE 50 34	Protected Military Remains: Aircraft crash Site, Mosquito, Serial number RL257, at Sherburn-in-Elmet (20 th May 1950)	Modern
MNY10148	SE 4934 3359	Windmill/Cornmill visible on 1907 Ordnance Survey Map.	Post-medieval
MNY16734	SE 4958 3398	Roman Coin found at Meadow View, Sherburn-in-Elmet	Roman
MNY25408 ENY4134	SE 49910 33354	Earthworks – Medieval Ploughing (Ridge and Furrow) east of Sherburn – NAA/GSB 1997/8	Medieval
MNY10338	SE 5014 3412	Aerial Photographic Cropmark – Ditch/Pit Alignment	Undated
MNY10341	SE 502 323	Aerial Photographic Cropmark – possible enclosures and trackway	Undated
MNY10351	SE 51501 34734	Canal West Section of Bishop's Dyke (14 th century)	Medieval

MNY10173	SE 486 331	Aerial Photographic Cropmark – ring ditch (very near edge of recent quarry)	Undated
MNY25214 ENY3953	SE 49390 33572	Medieval Ditch found during an Archaeological Watching Brief, south of 28 Low Street by Fern Archaeology in November 2007.	Medieval
MNY25409 ENY4139	SE 49956 33315	Undated ditches identified during geophysics and trial excavation at Fairfield Link – GSB 1997 and NAA 1998.	Undated
MNY10147	SE 4896 3389	Aerial Photographic Cropmark – ring ditch/barrow	Prehistoric
MNY23579 ENY1446	SE 48965 33405	2 Roman Sarcophagi found during development at Garden Lane, Sherburn-in-Elmet. Map Archaeological Consultancy in 1997.	Roman
MNY10133	SE 487 331	Aerial Photographic Cropmark – Ditch and enclosure	Undated
MNY24933	SE 486 333	19 th or 20 th century Well found during Watching Brief at Church Hill, Sherburn-in-Elmet in 2007 by Humber Field Archaeology	Post-medieval/ Modern
MNY10149	SE 4937 3365	Sherburn Methodist Church – Wesleyan Association Chapel	Post-medieval
MNY10172	SE 489 322	Aerial Photographic Cropmark – Trackway	Undated
MNY10156	SE 498 344	Aerial Photographic Cropmark – Drainage Ditch	Undated
MNY23524 ENY475 ENY725	SE 49192 33662	19 th century well found during an Archaeological Evaluation at Corble's Garage, Kirkgate, Sherburn-in-Elmet by Tony Sumpter Archaeology in 2002	Post-medieval
MNY10199	SE 50 34	Mill mentioned in the entry for Sherburn-in-Elmet in the Domesday Book as part of the Archbishop of York's Manor	Anglo-Saxon/ Medieval
MNY24472 ENY2839	SE 48987 33458	Field boundary at Land adjacent to 29 Church Hill, Sherburn-in-Elmet during a Watching Brief in 2005 by WYAS	Undated (Medieval)
MNY10169	SE 494 322	Aerial Photographic Cropmark – Geological Marks	Undated
MNY17155	SE 5029 3318	Earthwork - bank north-west of Sherburn Junction	Undated (Medieval)
MNY17157	SE 503 323	Enclosure south-west of Low Farm	Undated

MNY17152	SE 5027 3355	Rectangular enclosures south of Moor Lane	Undated
MNY16794	SE 4983 3383	Trackway	Undated
MNY16783	SE 493 326	Enclosure	Undated
MNY16781	SE 499 320	Enclosure	Undated
MNY16782	SE 499 320	Trackway	Undated
MNY16784	SE 490 325	Ditch	Undated
MNY16796	SE 4897 3389	Ring Ditch	Prehistoric
MNY16795	SE 4904 3388	Ditch	Undated
MNY26517 DNY16870	SE 51 33	Protected Military Remains Aircraft Crash Site Magister P2393	Modern
MNY27004 DNY17351	SE 51 33	Protected Military Remains Aircraft Crash Site Albemarle V1762	Modern
MNY30670 DNY17551	SE 50 34	Protected Military Remains Aircraft Crash Site Mosquito RL257	Modern
MNY30680 DNY17561	SE 51 33	Protected Military Remains Aircraft Crash Site Chipmunk WB661	Modern
MNY36017	SE 493 337	English Civil War Battle at Sherburn in Elmet 15 th October 1645	Post-medieval
MNY36019	SE 493 337	English Civil War Skirmish at Sherburn in Elmet 12 th /13 th December 1642	Post-medieval
ENY1920	SE 49396 33595	Archaeological Watching Brief on Land between 22-26 Low Street, Sherburn in Elmet by Tony Sumpter Archaeology in 2003	
ENY1956	SE 49220 33680	Written Scheme of Investigation for a Building Recording at Hall Garth Farm, Kirkgate, Sherburn in Elmet. Tony Sumpter Archaeology 2003	
ENY2071	SE 49214 33614	Notification of commencement of a Watching Brief in 2004 at Hall Garth Farm, Kirkgate, Sherburn in Elmet (Tony Sumpter Archaeology)	
ENY 1964 ENY 1965	SE 49512 33596	Land at Pasture View, Sherburn in Elmet Written Scheme o Investigation and Archaeological Evaluation by Trial Trenching (MAP 2003)	
ENY2345	SE 50418 33040	A162 Sherburn in Elmet Bypass Desk Based Assessment (NYCC 1989)	

ENY 3096	SE 4926 3374	Squires Coffee Bar, 6 Kirkgate, Sherburn in Elmet – Watching Brief Daniel Hull Archaeology 2005	
ENY3917	SE 50411 33484	Land north of Green Dike, Sherburn in Elmet Magnetometer Survey by WYAS 2006	
ENY3918	SE 50302 33681	Notification of Commencement – Watching Brief on Land off Moor Lane Sherburn in Elmet (MAP 2007)	
ENY4132	SE 49917 33386	Fairfield Link, Sherburn in Elmet - Desk Based Assessment (YAT 1997)	
ENY4133	SE 49900 33341	Fairfield Link, Sherburn in Elmet - Magnetometer Survey (GSB 1997)	
ENY4134	SE 49896 33331	Fairfield Link, Sherburn in Elmet – Trial Trenching (NAA 1998)	
ENY4356	SE 49392 33656	Sherburn in Elmet Renaissance Project – Desk Based Assessment (Golder Associates 2000)	
ENY5574	SE 49497 33745	Specification for a Watching Brief at Thornton Funeral Directors, 12 Moor Lane Sherburn in Elmet (Dearne Valley Archaeological Services 2010)	
HNY5154	SE 477 372	Historic Landscape Characterisation – Modern Improved Field based on Enclosed Fields with large degree of boundary loss 3970.81 Ha	Modern
HNY5331	SE 504 354	Historic Landscape Characterisation – Sherburn Award Parliamentary Enclosure (late 18 th century) 627.62 Ha	Post-medieval
HNY5761	SE 488 325	Historic Landscape Characterisation – Modern Strip of Broad Leaf Plantation 2.80 Ha	Modern
HNY5777	SE 493 334	Historic Landscape Characterisation – Settlement of Sherburn – nucleated Village 141.94 Ha	Anglo-Saxon, Medieval, Post-medieval, Modern
HNY6374	SE 504 326	Historic Landscape Characterisation – Unknown Planned Enclosure of medium sized irregular fields	Post-medieval

		104.70 Ha	
HNY6497	SE 487 332	Historic Landscape Characterisation – Unknown Planned Enclosure of medium sized regular fields 45.09 Ha	Post-medieval
HNY 6657	SE 490 345	Historic Landscape Characterisation – Unknown Planned Enclosure of small regular fields 11.70 Ha	Post-medieval

8.7 Aerial Photographic Cropmarks

8.7.1 A variety of undated Aerial Photographic Cropmarks and Landscape Features have been noted on the HER within the Proposed Development Area and within one kilometre (Figs.4, 5 & 17).

8.7.2 A field system and three trackways are noted within the Proposed Development Area (MNY10165, MNY10166, MNY16719 and MNY17156).

8.7.3 Eighteen other Aerial Photographic Cropmarks in Sherburn have been interpreted as Geological Marks (MNY10169), Trackways (MNY10145, MNY10172, MNY16794, MNY16782), Ditches (MNY10156, MNY16784, MNY16795), Pit Alignments (MNY10338), Enclosures (MNY10341, MNY10133, MNY17157, MNY17152, MNY16781, MNY16783) and Ring Ditches (MNY10173, MNY10147).

8.8 Neolithic/Bronze Age

8.8.1 Fieldwalking of the Application area produced a flint assemblage consisting of waste material and tools evenly distributed across the area (Fig. 20) and were of a predominantly Late Neolithic – Early Bronze Age date and included both arrowheads and a fragment of a polished axe (MAP 1997b). The presence of arrow heads and possible axe flakes may be indicative of environmental factors such as deforestation.

8.8.2 Spot Find, a barb and tanged arrowhead, found during hoeing (Bramley pers comm).

8.8.3 Excavations at the Spinney uncovered Neolithic Remains (MNY24520; ENY3086).

Potential: Medium

Significance: Local to Regional

8.9 Iron Age

8.9.1 An Iron Age Ring ditch (MNY 16796) is noted within 1km of the Application Area. Iron Age Features were uncovered during excavations at the Spinney (MNY24520; ENY3086).

8.9.2 Trial Trenching on the Application Area in 1998 revealed extensive evidence for an Iron Age settlement (MAP 1998). Similar sites have been located along the Magnesian Limestone Ridge consisting of small rectangular fields, enclosures and associated settlement. The presence of a rare silver coin suggests that the site was associated with high status occupancy.

Potential: High

Significance: Regional – Excavation will enhance the understanding of the Heritage Asset, which at the present time is being damaged by agricultural activity.

8.10 Roman

8.10.1 In December 1996, a residential development site in Garden Lane, Sherburn (Figs. 4-6: MNY 23579, ENY1446) lead to the chance discovery of an inhumation burial with associated stone sarcophagus (MAP 1997a). Further excavation on the site recovered a second sarcophagus burial. Although no dating evidence was recovered during the excavation, the materials and form of the two sarcophagi suggested a Roman date. The use of plaster in Burial 2 and possibly Burial 1 in the treatment of the body is seen as an indicator of high

status. The majority of plaster burials occur in stone or lead coffins, the earliest securely dated examples in Britain are of Third century with stone coffins becoming more common in the fourth century. Roman Features were uncovered during excavations at the Spinney (MNY24520, ENY3086).

- 8.10.2 The Roman Period was represented by a small number of pottery sherds (Fig. 21) during MAP's (1997b) field walking programme in Area A.
- 8.10.3 Geophysical Survey of Areas A & B in April 1997 (Pacitto 1997a) indicated a series of enclosures, some with internal features and others with associated trackways (Fig. 25). The survey also located numerous circular anomalies ranging from pit like features to possible hut circles. The concentration of features appeared to dissipate towards the east.
- 8.10.4 Trial Trenching in Areas A & B consisted of five trenches and were sampled excavated. Trench 1 was located in an area where the geophysical survey had detected three anomalies with high magnetic readings, the nature of which suggested that it might be related to an unexploded bomb or wreckage from a crashed aircraft. Excavation showed that the features responsible for the high readings were a back filled telegraph pole.
- 8.10.5 Trench 2 divided into a northern and southern area concentrated on the relationship of ditch intersections in Trench 2 north, and the interior of an enclosure in Trench 2 south. Excavation showed activity both of Iron Age and Romano-British date, as represented by pottery. Excavation in Trench 2 south also produced an assemblage of Prehistoric and Romano British finds.

8.10.6 Trench 3 provided the opportunity to evaluate an area of enclosures aligned north south with internal features. In addition to pits and postholes, a curvilinear feature and a robbed out building were recorded. Finds included Romano British pottery, quern fragments, animal bone, burnt clay and burnt stone representing substantial occupation activity.

8.10.7 Trench 4 located to investigate a large circular geophysical anomaly produced only evidence of geological features and a medieval field boundary.

8.10.8 Trench 5 located over a large circular anomaly produced evidence for a undated deposit of burnt material. The Roman small finds were predominantly first to second century personal ornaments in good condition suggesting deliberate deposition rather than casual loss. It has been suggested that many of the small finds found at this site derived from ritual deposition possibly associated with marking boundaries. As the majority of the ornaments came from the ditches any future work on the site would need to examine the evidence to support this supposition.

8.10.9 Spot finds, representing artefacts located by chance, consist of a Roman coin of Vespasian Dupondius (Fig. 4: MNY 16734) and a small number of Roman coins found during metal detecting.

Potential: High

Significance: Regional – Excavation will enhance the understanding of the Heritage Asset, which at the present time is being damaged by agricultural activity.

8.11 Anglo-Saxon/Anglo-Scandinavian

8.11.1 The village/town (MNY 10132) and parish name of Sherburn is derived from the Anglo-Saxon 'SCIR BURNAN (900), SCIREBURNAN

(972) meaning 'clear stream' (Smith 1961), perhaps a reference to any one of the dikes which occur to the south and east of the village. Although the place name is Anglo-Saxon in form it is without any of the elements which would indicate early Anglian Settlement (Long 1993).

- 8.11.2 The survival of Elmet until the early Seventh century as a Celtic, and by then Christian Kingdom is attested by Bede (Sherley-Price 1955)
- 8.11.3 In 937, Athelstan was made King of England and after the Battle of Brunanburh he gave the manor of Sherburn to the See of York.
- 8.11.4 Pre-Conquest charters are rare and the information they provide on land holdings in this period is very important. In the Sherburn Charter a grant of twenty hides at Sherburn was made in 963 by King Edgar to a nobleman described in the charter as the venerable Aeslac. It has been suggested that the Sherburn Estate may have been lost or forfeited in this period and that the grant by Edgar to Aeslac was a move to return the land to the Church (Long 1993). The boundaries of the hides are described as enclosing a compact area with detached portions of land in a number of surrounding vills. Seven out of the nine identified detached portions named are on the limestone ridge and this area was part of the kingdom of Elmet which developed after the withdrawal of Roman authority. Sherburn was the centre, or caput, of a large estate and its soke. The boundaries of the Estate are described and it has been interpreted that the southern boundary of the holding was Mill Dike, the western boundary following the present A656, the northern boundary the Roman Ridge road (which is the boundary between the Wapentakes of Barkston Ash and Skyrack) and the eastern boundary as Bragdale. This interpretation means that the development area lies immediately to the east of the pre-Conquest Estate (Fig. 8).

8.11.5 To the north of the church stands Hall Garth, a Scheduled Ancient Monument and associated earthwork features (Figs. 4 & 6 : Monument No.30118 (NY564), DNY494, MNY10139 - MNY10144). Hall Garth is the putative site for King Athelstan's Palace. The earthworks which survive in Hall Garth are characteristic of a Type A4(?) moated site with no moat on the uphill side (Le Patourel 1973). The moat contained service buildings and dovecote. The residence was in decay in the Fourteenth century and in 1340 was valued at 3s 4d. In 1363 the fabric of the buildings provided some of the stone that was granted for the fabric of York Minster (Surtees Soc. 1858). Hall Garth therefore accommodated an ecclesiastical residence well into the Fourteenth century.

8.11.6 Spot Finds include an engraved ring with "EATHELWITH REGINA" (Fig. 4: MNY 10278), and fragments of a stone cross of Anglian date found close to the church (Fig. 4: MNY10138, MNY16731 & MNY16732).

Potential: Low

Significance: Low

8.12 Medieval

8.12.1 In the Domesday Survey 'Scireburne' is recorded as "with its berewicks there are, for the King's geld, four score carucates of land, in which sixty ploughs may be. This manor was, and is, in the demesne of the Archbishop of York. In it, he has now seven ploughs in the demesne, and thirty villains and eight bordars with ten ploughs and a half, and six sokemen and fifteen bordars having six ploughs and a half. Two churches are there and two priests with one border having one plough. One mill rendering ten shillings. In the whole manor, three hundred and fifty acres of meadow. Wood, pasturable, eight leugae in length and three leugae in breadth, and underwood, four leugae and one in breadth. Plain, (or champaign), land five league in length and two and one quarenteen in breadth.

- 8.12.2 Of this land, the Archbishop's knights have fifty-two carucates, where they have in the demesne sixteen ploughs and sixty villanes and seventy-five bordars having thirty-four ploughs. Of the same land, one thane has five carucates and one bovate, where he has two sokemen and six, villanes and eighteen bordars having seven ploughs. Of the same land, two clerks have six carucates, where they have in the demesne two ploughs and a half, and five villanes and five bordars having four ploughs. Of the same land, the Abbat of Salebi (Selby) has seven carucates.
- 8.12.3 The manor, was worth thirty-four pounds and six shillings; now, the same, and is in Barchestone Wap" - Barkston Ash wapentake (Skaife 1895).
- 8.12.4 In 1223, a charter was granted for a market to be held weekly on a Wednesday and in 1238 a further charter granted a annual fair to be held on the 13th/14th of September.
- 8.12.5 In 1318 Robert the Bruce attacked Sherburn and in 1322 Sherburn was raided after the Battle of Myton by the Scots and the Manor House was destroyed. In September 1321 rebels led by Thomas of Lancaster swore to fight until Hugh de Spencer was removed from power. The rebels met at All Saints Church, Sherburn, but they were defeated and beheaded at Pontefract by Edward II.
- 8.12.6 The Church of All Saints is located at one of the highest points in the village (Fig. 4: MNY10135, Grade I Listed Building). The church is not constructed in one build and displays architectural features from the Twelfth to the Nineteenth centuries. The nave is a Norman rebuild dated to the first half of the Twelfth century, the chancel, tower and aisle are of Thirteenth / Fifteenth century date with later additions. More noteworthy is that the church is mentioned in an

early 10th century manuscript which records an inventory of goods for the church as two 'Christ books', two roods, two service books, three other books, a chalice and dish and various vestments, four hand bells and six hanging bells (Minster Library). Additional evidence for an earlier church is provided by the discovery in 1948 by the Rev. G W Lane of a fragment of an Anglian cross in the Vicarage garden (See Para 3.29). The plant decoration depicted on the cross places the piece in the Ninth /Tenth century.

8.12.7 At the south-east corner of the church was the Chapel of St Mary's and the Holy Angels (Fig. 4: MNY10137, MNY 16733). This building was mentioned in the early Thirteenth century and was still in existence in 1502.

8.12.8 The Hall Garth site is not the only moated site in close proximity to Sherburn. To the east of the development site is Rest Park (Fig. 8). Originally a Type A2 (d) moated site this was destroyed in 1963. The site has been identified as the Archbishop of York's medieval manor of Rest. Rest was situated in the manor and parish of Sherburn and for administrative purposes was part of the barony of Sherburn. As the importance of the Hall Garth site declined, the palace at Cawood increased and it is at the time when the Hall Garth site is abandoned that Rest Park is first recorded in the ecclesiastical records. Despite the pre-eminence of Cawood it was to Sherburn that Rest Park was appurtenant. The Rest Park estate was only finally sold by the ecclesiastical commissioners in the Twentieth century.

8.12.9 To the south of Rest Park and south-east of the development site is another moated complex known as Ragged Shaw (Fig. 8). A small Type A1 (a) moat this has been destroyed and now only exists as a crop mark feature. The enclosure map names the site as Reygate Shaw, presumably a reference to the previous owners, the Reygate family, who were important in the Fourteenth century.

8.12.10 During the course of the Cartographic and the Walk Over Surveys a number of earthworks were observed and recorded. These included three dikes, one enclosure, and a hedge bank (Fig. 18).

8.12.11 The presence of dikes around Sherburn play an important role in the development of the landscape. Predominantly used for drainage, a function which was also employed in the past, there is good evidence to show that drainage was not their only function. The northern boundary to the development area is formed by a single dike known as Bishops Dyke (MNY 10351: Figs. 8 and 18). At the time of the survey the part of Bishops Dyke which falls within the survey area had nettle and grass covered sides with the occasional small elderberry bush. The sides had an approximately 60 degree slope and a water covered base. The present form of the dike is likely to be the result of periodic cleaning out of silt accumulation.

8.12.12 An assessment of the Dike was made in 1980. *"The Bishop Dyke is an artificial channel which runs from the banks of the River Ouse at Cawood to Sherburn-in-Elmet, first in south-westerly direction for about three and a half miles and then, making a wide sweep, due east as far as the beginning of the town of Sherburn, where it makes a sharp turn to the North. The canal is generally very straight in direction and has a uniform width of about 16ft.....The surface of the water appears to have a uniform gradient from Cawood to Sherburn, which is sufficient to maintain a rapid flow. Its water derives from the lake at Barkston, which is fed by a spring known as the 'Scarthingwell' and from certain other minor streams and springs which flow down from limestone hills between Barkston and Sherburn.....From Sherburn eastwards for several miles the channel is above ground level and the natural drainage is by independent system of dikes and streams which feed into Selby Dam"* (Miller & Gee 1983, 167-8).

- 8.12.13** *Bishop Dyke Road, which is the main road from the bridge at Cawood to Sherburn is for the greater part of its length a raised causeway and it seems to have been constructed at the same time as the formation of the Bishop Dyke” (ibid).*
- 8.12.14** *The Bishop Dyke and Bishop Dyke road are major engineering works (MNY10351). One purpose may have been to bring the spring water from the hills around Sherburn and Cawood to feed the mill, to supply the moats and possibly as a water supply for the town and castle” (in Cawood), “but it also has all the appearance of having been built as a transport canal” (ibid).*
- 8.12.15** **To the west of Sherburn is Huddlestone Quarry. In 1385, the Dean and Chapter of York took the lease on this quarry and from this date used the stone for their building projects until the mid Sixteenth century (Surtees Soc 1859). Initially it would appear that the stone, once quarried was carried to Cawood by cart (Y.P.R. 37) and to accommodate further transport a quay was constructed at Cawood in 1421-2 (Y.F.R. 40). A reference in 1457 (Y.F.R. 69) indicates that the road was still in use as in this year it needed to be repaired. By 1498 and again in 1504 the documentary references suggest that the canal was in use, and references continue until 1519.**
- 8.12.16** **The possibility that the dyke was used as a means of transport cannot be dismissed but equally it is possible that the watercourse acted as a main drain for the whole complex of quarries around Sherburn, all of which were situated within the Archbishop’s Barony.**
- 8.12.17** **An Earthwork (Fig. 18) representing a small enclosure aligned east to west and measuring 40m by 20m was located north of Bishop’s Dyke. There is another enclosure to the north (which was either preserved or destroyed during the construction of the new section of the B1222**

- it was agreed between the Archaeology Section and the Highways section of NYCC that the road was to be built up and no excavation was to take place) and a further example to the south-west (outside of the survey area) and one to the north-west (destroyed by recent housing).

8.12.18 The earthwork, known as Green Dyke (Figs. 8 and 18), represents a dyke aligned east-west and on a very similar alignment to Bishops Dyke. Bordered to the south by the surveyed hedgerow (Fig. 19) there is a parallel dyke to the south bordered to the north by another surveyed Hedgerow. At the time of the survey both of the dykes held water and had sloping sides of 60 degrees covered in the main with grass and nettles. The western limit of the dyke (close to the recent housing) had been culverted.

8.12.19 Immediately to the south and at a point outside of the survey joining with Green Dike is a further dyke. Whereas Bishop and Green Dikes are characteristically straight, this Earthwork/Dyke appears to meander. The dyke is not recorded by name on any of the available maps but its importance is illustrated as the dyke forms the eastern boundary of the Township of Sherburn (Figs..8 & 18).

8.12.20 Surviving documentary evidence indicates that wool was being produced and sold in the Fourteenth century and that wool and flax were in produced in the Fifteenth and Sixteenth centuries.

8.12.21 A medieval ditch was found during an Archaeological Watching Brief at 28 Low Street (Figs. 4 & 5: MNY25214, ENY3953). Medieval ploughing (Ridge and Furrow) and associated ditches were found during the evaluation at Fairfield Link, east of Sherburn (MNY25408, MNY25409, ENY4134 & ENY 4139). Two other sites in Sherburn have been provisionally dated to the Medieval period including afield

boundary at 29 Church Hill (MNY24472, ENY2839) and an earthwork north-west of Sherburn Junction (MNY17155).

Potential: Low

Significance: Low - Local

8.13 Post-medieval

8.13.1 The suppression of the monasteries in the Sixteenth century created an enormous land bank, many of the old monastic lands were gifted or sold to loyal servants of the crown, as appears to have happened in Sherburn. On the 6th of February in the 36th year of Henry VIII's reign (1545) the manor of Sherburn passed to the crown from the authority of the Archbishop Holgate. William Hungate was at the court of King Henry and in 1545 he purchased the manor of Sherburn. The Hungate family continued to hold the Estate until 1608 when the land was confiscated and granted to Ralph Baldwin and then to John Lumby in 1609. The Estates were returned to the Hungates under Charles I. The Hungates were staunch Royalists and even financed Charles I to the sum of £300 in 1642. Sir Francis Hungate was killed at the Battle of Chester in 1643 fighting for the Royalist cause.

8.13.2 During the Civil War Lord Digby was captured near Aberford, and there was a series of Civil War skirmishes before the battle at Sherburn (MNY36017, MNY36019). 'On Monday, the 23rd of January 1643 he (Fairfax) marched from Bradford with six troops of horse and three dragoons under Sir Henry Forester and 1000 infantry with 2000 clubmen under his command to assault Leeds, then occupied by Sir William Saville..... On the 25th of January intelligence reached Fairfax that the Earl of Newcastle had that day concentrated his scattered forces at Sherburn whence he marched to York with 36 columns, two pieces of canon and 45 baggage wagons the object to meet ammunition brought by the Queen' (Wheater 1882).

- 8.13.3** Fairfax seized Sherburn and the Estate was confiscated by Parliament from the Hungates, although in 1656 Robert Hungate endowed a school and hospital at Sherburn (Fig. 4: MNY10150, DNY13582 – a Grade II Listed Building). The Estate was restored to the family during the restoration in 1662. Estates continued in the Hungate family until 1749 when Mary Hungate daughter of Sir Francis and sister of Sir Phillip and Sir Charles inherited the Estates. Mary Hungate was married to Sir Edward Gascoigne and in turn the estate then passed to the Gascoigne family. Edward Gascoigne died in 1749 and the land passed to his son Sir Thomas. On his death to Richard Olivier who was married to Thomas Gascoigne's step daughter and he took the name Gascoigne. Land continued with this line until 1938, when parcels of land were sold off and Area A and B came into possession of the Bramley Family.
- 8.13.4** Documentary sources are limited in providing information for the arrangement of common fields and meadows in the medieval period. Little physical evidence survives for the practice of open field farming in the development area and there is no surface evidence for ridge and furrow.
- 8.13.5** There is no Tithe Map for Sherburn-in-Elmet because the land had been held in the past by the Church.
- 8.13.6** The common arable fields, meadows, pasture grounds, commons and waste lands were enclosed in March 1770 (HNY5762).
- 8.13.7** On the 28th/29th of March 1770 the Enclosure Award for Sherburn-in-Elmet (Fig.9) valued the Estate at £3099 2 shillings and 6 pence. The field boundaries within the majority of the survey area appear to be regimental and are therefore probably associated with Parliamentary Enclosure. The land owners are recorded as William Barber, Sir Thomas Gascoigne, Bacon Morritt and John Baker.

- 8.13.8** Documentary references to field names (Fig. 10) based on the Estate Map of 1824 illustrates a variety of names with Low Field and Willow Tree Close the two most common. Low Field is a direct reference to the topographic location of the land in comparison with the higher land to the north. The Willow Tree Closes probably refer to Willows growing on the edges of the fields close to the dikes. Bond and Warning most probably refer to the name of the tenants.
- 8.13.9** The First Edition Ordnance Survey map c. 1850 (Fig. 11) shows a series of rectangular fields. Only one field is named, that being Warning Pasture. A malt kiln is depicted to the west of the site along with the site of Sherburn Wind Mill (MNY 10148).
- 8.13.10** By 1908, the Ordnance Survey map (Fig. 12) illustrate the presence of a trackway and two earthwork features to the north of Green Dyke. The field boundaries shown on the 1967 map still existed for the site at the time of the survey, the only variances are the changes to boundaries to the east with the creation of the Sherburn Bypass (Fig.14).
- 8.13.11** The environs of Sherburn-in-Elmet are currently characterised by agricultural activity, gypsum extraction and coal mining, however other past industries included mills, kilns, brick and tile works, the railway, and stone quarrying.
- 8.13.12** Within the village of Sherburn and to the west of the development area are the sites of three mills. A mill is mentioned in Domesday on the Archbishop of York's Manor at Sherburn (Fig. 4 – MNY 10199 : Scaife 1896), a mill was still in use in 1845-48 (Fig. 4 - MNY10167) and a windmill/cornmill (Fig. 4: MNY10148).

- 8.13.13 Associated with the mills are malting kilns (Fig. 12), one of which is recorded to the west of the development site on the 1950 First edition Ordnance Survey Map (Fig. 10) and one to the north. Maltings, consisting of a drying floor, sprouting floor and steeping tank, varied greatly in size and the majority of examples are recorded in towns (Crossley 1974). Whether the Sherburn maltings supplied the village or were involved in the Tadcaster brewing industry is not established.
- 8.13.14 To the north-east of Moor Lane are the ponds from a redundant brick works (Fig. 12). The location of this small scale industry away from the centre of the village reflects the change in geology from limestone to sands/clays. The earliest cartographic evidence for these works is the 1908 Ordnance Survey map.
- 8.13.15 To the east of the site is the Sheffield to York railway line (Fig. 12) and to the south is the Leeds to Hull line, both constructed in the Nineteenth century.
- 8.13.16 The presence of good quality limestone close to the surface explains the number of quarries to the south of the site. One of the quarries is called "Railway Quarry" suggesting that it was excavated during the construction of the railway in the Nineteenth century.
- 8.13.17 The limestone ridge which runs through the western portion of the site is also characterised by a number of water pumps, one of which lies just to the north of the site (Fig. 11) and one immediately to the south of the track which divides Areas A and B.
- 8.13.18 Situated to the east of the site is Gascoigne Wood mine, the main storage point for the Selby Coalfield. Records for the proposed development area show that the mineral rights for the site and surrounding areas were documented in the early 1930's. When the land was sold by the Gascoigne Estate, mineral rights were shared

between the Manorial Rights and the Micklefield Coal Company (Fig. 16).

- 8.13.19 The pottery assemblage from the post-medieval to the modern period found during the programme of field walking (MAP 1997b) increased in quantities indicating that the western part of Area A had been under cultivation longer than the eastern (Figs. 23 & 24). In addition a small quantity of slate, slag, a limestone roof tile, a quern fragment, glass and clay marbles and a small number of Iron objects (horse shoe fragments and nails) were recorded.
- 8.13.20 Evaluation of the area north of Moor Lane D, through Desk-based Assessment (YAT 1997), Geophysical Survey (GSB 1997) and Trial Trenching (NAA 1998), also illustrated the lack of activity away from the limestone ridge. Only vestigial ridge and furrow were recorded (MNY 25409).
- 8.13.21 Geophysical survey of Areas C and D in February 2000 (Pacitto: NY11 2000) located a pattern of superimposed field drainage systems although no recognisable archaeological features were apparent, the alignment of features in the south western corner of the area may indicate other activity.
- 8.13.22 An archaeological evaluation at Corble's Garage, Kirkgate in January 2002, located an stone lined well (Figs. 4 & 5: MNY 23524, ENY725) associated with the former Early Nineteenth century cottages on the street frontage but no signs of earlier occupation and relatively undisturbed deposits to the south of the development plot, suggesting that the core of medieval and earlier settlement does not extend to this area of Sherburn-in-Elmet (Sumpter 2002).
- 8.13.23 A Watching Brief during the excavation of sixty-eight testpits, fifteen sample windows and eighteen boreholes (Fig. 27) in May 2002 failed

to record any archaeological features. However care was taken to avoid the sensitive areas as shown by the Geophysical Survey and Trial Trenching (MAP 2002).

8.13.24 A Field boundary (MNY 24472) at land adjacent to 29 Church Hill, Sherburn-in-Elmet was uncovered during a Watching Brief in 2005 by WYAS.

8.13.25 A Nineteenth or Twentieth century well (MNY 24933) was also uncovered during a Watching Brief at Church Hill in 2007 by Humber Field Archaeology.

8.13.26 A number of undated earthworks including banks, enclosures, trackways and ditches are listed on the HER within 1 km of the Proposed Application Area.

8.13.27 Watching Brief was undertaken between 2007 and 2010 on land adjacent to Moor lane on behalf of Persimmon but no archaeological deposits were encountered. (MAP, 2010)

Potential: Low

Significance: Low - Local

8.14 Listed Buildings

Table 6. Listed Buildings within 1km of the Proposed Development Area (noted on Heritage Gateway)

Name	Grid Ref.	Description	Grade
Church of All Saints Church Hill, Sherburn-in-Elmet. MNY10135	SE 48806 33525	Church. C12 nave and north aisle, C13 chancel with C14 south aisle and extension to north aisle, C15 south aisle chapel, and later additions and alterations including C16 clerestory, north aisle windows and heightening of tower. East end restored in 1857 by Anthony Salvin and C19 vestry. Magnesian limestone	I

		ashlar. 2-stage west tower, 4-bay aisled-nave (with fifth bay embracing tower), south porch, south chapel, 2-bay chancel with north vestry.	
4 Finkle Hill, Sherburn-in-Elmet MNY31144 ENY5170	SE 49377 33760	Pair of houses, now shops. C17 origins with early C19 rebuilding and mid -late C20 additions and alterations. Magnesian limestone ashlar with ashlar dressings and Welsh slate roof. 3 storeys, 3 bays. Plinth to right. Pair of central entrances, that to left now plate glass window, that to right a 6-fielded-panel door under fanlight with radial glazing bar, each within moulded architrave and with joint frieze and hood.	II
Churchyard Cross, 3m east of South Porch at All Saints Church, Church Hill, Sherburn-in- Elmet	SE 48110 33515	Cross. Probable C17 base with earlier crosshead. Magnesian limestone. Approximately 1 metre high. Truncated shaft with decorated wheel head and portion of carved base of a stone cross.	II
The Village Centre, Finkle Street, Sherburn-in-Elmet MNY10150	SE 49351 33766	Grammar School, now Village Hall. 1619 with later additions and alterations. Founded under the will of Robert Hungate. Magnesian limestone, now largely cement rendered, with Welsh slate roof. U-shaped on plan with infill to rear. 2 storeys. In process of alteration and demolition to rear at time of resurvey.	II
63 and 65 Kirkgate, Sherburn-in-Elmet MNY31147 ENY5171	SE 48980 33608	Farmhouse now house. C16, C17 with C19 and C20 alterations. Coursed rubble with ashlar dressings. Pantile roof with a single gable and a single ridge brick stacks. Quoins 2 storey. Interior has 2 large chimneys, that to the east gable wall has large inglenook fireplace with ressummer now partially blocked, the central chimney has 2 inglenook fireplaces, a larger one to the east with bressummer and salt cupboard, to the south of this chimney a stone winder staircase, no longer in use. 2 complete stud partitions survive on the ground floor, with chamfered beams.	II

8.14.1 There are five Listed Buildings within the village of Sherburn (Fig. 6), ranging in date from the Ninth to Seventeenth century. The earliest structure listed is a decorated Churchyard Cross (Grade II) made of magnesian limestone, standing c. 1 metre in height. The cross is located in the church yard of All Saints Church. The church is a Grade I Listed Building with a Twelfth century nave and north aisle, Thirteenth century chancel with Fourteenth century south aisle and extension to the south aisle, Fifteenth century south aisle and chapel and a Sixteenth century clerestory, north aisle and alterations to the tower. The former Grammar School, now village hall situated on Finkle Hill is a Grade II Listed Building built in 1619. Also Grade II listed is No. 4 Finkle Hill a house, currently used as a shop with Seventeenth century origins and Nineteenth and Twentieth century additions and 63-65 Kirkgate a former farmhouse of Sixteenth/Seventeenth century date with Nineteenth and Twentieth century additions.

8.14.2 There are no standing buildings on site. All of the Listed Buildings are situated to the north of proposed development site and at distances of over 500m (measurements taken from the north-western corner of the site adjacent to Low Street) and shielded from the development by post war housing and therefore there will be negligible visual intrusion on them and their setting.

8.15 Site Walkover

8.15.1 The site was visited on the morning of Friday 23rd March 2012. Large arable fields are bounded by low sparse but well maintained hedgerows and open drainage ditches. The eastern boundary is defined by an existing drainage ditch, with a bridged access to the neighbouring fields. To the south are isolated dwellings and farm buildings in a flat open landscape.

8.16 Potential for Unrecorded Sites

8.16.1 The potential for unrecorded sites is moderate to high due to the extensive nature of the archaeological deposits uncovered during the Archaeological Evaluation undertaken between 1997-2003.

8.17 Evidence of Previous Disturbance

8.17.1 There is no evidence for previous disturbance in the area other than that associated with the use of the site as paddocks and for agriculture.

9. Assessment of Potential Effects

9.1 The Sherburn landscape consists of a of an Iron Age settlement that may have continued into the Roman period. The later field system created by parliamentary enclosure in the eighteenth century still survives. Although post-medieval farming may have removed some traces of archaeological deposits this assessment, as well as the Trial Trenching, has shown that the potential for archaeological deposits to have survived below ground is high. The construction and operational phases of the development without appropriate mitigation would have a major effect on the overall historical integrity of the landscape.

9.2 Potential Effects

9.2.1 The Constructional and Operational Phases of the development will have a major effect on the overall historical integrity of the landscape. This landscape consists of a field system created by Parliamentary Enclosure in the Eighteenth century.

9.2.2 Listed Buildings are located over 0.5km for the site and are shielded from the development by post-War housing and therefore there will be negligible visual intrusion on them.

9.2.3 The categories of development which will affect the archaeological resource are the construction of the roads, service trenches, house foundations and landscaping. Major impacts are foreseen during the development of the road systems, service provision house foundations and landscaping. The effects of the development on the hydrology of the site are negligible to the archaeological resource. The effect of vibration on the archaeological resource is felt to be negligible as the archaeological deposits exist below ground and are stable. Dust and noise would not pose any threat to the archaeological resource. The potential for damage to archaeological remains needs to be considered with direct reference to the following site subdivisions:

- **Land Adjacent to Low Street (Areas A & B)**

9.3 During Construction

9.3.1 This area forms the main western access into the development from Low Street but will also contains high-density residential development. Evaluation revealed significant archaeological features of Prehistoric and Romano-British date exist in this area of the site.

9.3.2 Coverage varied from between 0.45m (Trench 5) and 0.80m (Trench 2) before natural deposits were encountered.

9.3.3 Known Primary Impacts in this area would derive from the construction of the road and associated services, in addition to the construction of individual residential properties. Construction of the roads and houses will cause significant disturbance/destruction of significant archaeological deposits/features, therefore without mitigation the impact is major.

9.4 After Completion

- 9.4.1** Potential effects upon the archaeological remains after completion of the Proposed Development would be negligible.

9.5 Proposed Mitigation

- 9.5.1** The Mitigation measures proposed relate to both layout and design of the development within the most archaeologically sensitive areas.

- 9.5.2** The post Enclosure landscape will be lost along with the evidence for earlier utilisation of the land. The mitigation strategies suggested will provide preservation by record of the archaeological resource in those areas where development will have the greatest impact. The loss of the archaeological resource is balanced by the beneficial effects of the addition to the knowledge and understanding of settlement and utilisation of the land in the Prehistoric and Romano-British periods and enable a more holistic approach to the historic landscape occupation of the limestone ridge in this area of Yorkshire.

9.6 During Construction

- 9.6.1** As the proposed development will have a direct impact on the archaeological resource in this area, it has been agreed with the Heritage Unit at North Yorkshire County Council that Preservation by Record is the preferred option. A detailed specification will need to be agreed in advance of development to enable the detailed excavation of environmental and archaeological deposits through preservation by record. This would involve Open Area excavation in advance of development of Area A and B, post-excavation analysis and Publication. Community participation would be encouraged with open days whilst the excavations were being undertaken and liaison with local schools to offer access to the archaeology, talks and displays.

9.7 After Completion

9.7.1 As all archaeology will have been dealt with before the construction phase there will be no mitigation after completion of the project and therefore the effect would be negligible.

9.7.2 The mitigation put forward will have created a detailed enough archive record of all archaeological deposits by means of recording, analysis and publication.

9.8 Residual Effects

9.8.1 Residual effects relate to any archaeological sensitive areas that would remain after mitigation.

9.9 During Construction

9.9.1 The residual impact to archaeological remains will be negligible as archaeological deposits in the five different areas of the site would have been already recorded and been dealt with by the proposed Mitigation strategies.

9.10 After Completion

9.10.1 There will be no residual effects on the archaeological remains after completion.

Table 7. Summary of the Predicted effects on the proposed development on the relevant receptors in relation to cultural heritage and archaeology during the construction phase

Receptor	Probability	Effect	Significance	Duration of Impact	Permanence
Construction Phase					
Damage and loss to archaeological remains	Likely	Moderate	Not significant	Short term	Permanent
Damage or Loss to nearly Listed Buildings	Unlikely	Negligible	Not significant	Short-term	Temporary

Damage or loss to historic landscape and setting	Unlikely	Negligible	Not significant	Short-term	Temporary
--	----------	------------	-----------------	------------	-----------

Table 8. Summary of the Predicted residual effects on the proposed development on the relevant receptors in relation to cultural heritage and archaeology during the operational phase

Receptor	Probability	Effect	Significance	Duration of Impact	Permanence
Operational Phase					
Damage and loss to archaeological remains	Unlikely	Negligible	Not significant	Long-term	Permanent
Damage or Loss to nearly Listed Buildings	Unlikely	Negligible	Not significant	Long-term	Permanent
Damage or loss to historic landscape and setting	Unlikely	Negligible	Not significant	Long-term	Permanent

Key	Probability	Effect	Significance	Duration	Permanence
	Certain	Major	Significant	Long-term	Permanent
	Likely	Moderate	Not significant	Medium-term	Temporary
	Possible	Minor		Short-term	
	Unlikely	Negligible			

Table 9. Implementation of Incorporated Mitigation and Monitoring Proposals

Environmental Measure/Monitoring Proposal	Actioned By	Compliance Mechanism
Archaeological Excavation, Recording Brief on all groundworks	Redrow Homes and Persimmon Homes	By Planning Condition

10. References

Primary

North Yorkshire Heritage and Environment Section - Historic Environment Register

Listed Buildings Register (www.imagesofengland.org.uk)

National Monuments Register (www.pastscape.org.uk)

North Yorkshire Record Office

West Yorkshire Record Office

North Yorkshire County Council Heritage Unit

Borthwick Institute, York University

Central Library, York

York Minster Library

Gascoigne Family Records: West Riding Archives – Leeds: GC/M3

Minister's Accounts, Barony of Sherburn: West Riding Archives – Leeds: GCM/3/206

Plan of the Township of Sherburn by John Power. 1824 (West Riding Archives – Leeds)

Enclosure Award (West Riding Archives – Leeds) AC 1249

First Edition Ordnance Survey Map c.1850 Sheet 220

Ordnance Survey Map, 1908. Scale 6" to 1 mile. Sheet 220 NW

Ordnance Survey County Series Map, 1908. Scale 25" to 1 mile Sheets 220.1-2, 5-6.

Ordnance Survey Map c.1950. Scale 1:10560 Sheets 43 NW & 53 SW

Ordnance Survey Map c.1967. Scale 1:10560 Sheets 43 NW & 53 SW

Ordnance Survey Map c.1980. Scale 1:10000 Sheets 43 NW & 53 SW

- MAP (1998) Low Street, Sherburn-in-Elmet, North Yorkshire. Archaeological Sample Excavation. Area A & B. Unpublished.
- MAP (2000) The Spinney, Low Street, Sherburn-in-Elmet, North Yorkshire. Desk-based Assessment & Archaeological Evaluation. Unpublished.
- MAP (2002 a) Low Street, Sherburn. Residential Expansion. Environmental Impact Assessment. Unpublished.
- MAP (2002b) Low Street, Sherburn-in-Elmet, North Yorkshire. Proposed Housing Development. Desk-based Assessment. Unpublished.
- MAP (2010) Moor Lane, Sherburn In Elmet, North Yorkshire. Archaeological Watching Brief
- Miller, J.S & Gee E.A. 1983 'The Bishop Dyke and Huddlestone Quarry.' YAJ. Vol. 55, p.167-169.
- NAA. 1998 Fairfield Link, Sherburn-in-Elmet. An Archaeological Evaluation. NAA 98/48.
- Pacitto, A.L. 1997a. Low Street, Sherburn-in-Elmet, North Yorkshire. Geophysical Survey Areas A & B.
- Pacitto, A.L. 1997b. Low Street, Sherburn-in-Elmet, North Yorkshire. Geophysical Survey Areas C & D.
- Pacitto, A.L. 1997c. Low Street, Sherburn-in-Elmet, North Yorkshire. Geophysical Survey Area E.
- Pevsner, N. 1966. The Buildings of England: West Riding.
- Riley, D. 1973. Aerial Reconnaissance in the West Riding: Magnesian Limestone Country. YAJ. Vol. 43.

- Savage, A. 1982. Anglo-Saxon Chronicles, Phillip and Longman.
- Skaife, R.H. 1895. 'Domesday Book of Yorkshire' YAJ Vol. 13, p. 321-489.
- Smith, A.H. 1961 The Placenames of the West Riding.
- Sumpster, A. 2002. Corble's Garage, Kirkgate. Sherburn-in-Elmet, North Yorkshire. Archaeological Evaluation.
- Surtees Society. 1859.
- Thirsk, J. 1961. Agrarian History of England and Wales, Volume 4. Cambridge.
- Wheater. 1882. History of the Parishes of Sherburn and Cawood.
- WYAS. 2005. 29 Church Hill, Sherburn-in-Elmet, North Yorkshire. Archaeological Evaluation.
- YAT. 1997. Fairfield Link, Sherburn-in-Elmet, North Yorkshire. Desktop Study. Field Report No.13.
- YFR 40. York Fabric Rolls.
- YFR 69. York Fabric Rolls.

11. List of Contributors

Desk Based Assessment by Paula Ware and Kelly Hunter

Site Walkover by Paula Ware and Kelly Hunter

Report by Paula Ware and Kelly Hunter

Edited by Paul Ware

Drawings by Kelly Hunter

Plates, Administration, Filing, Copying and Binding by Sophie Langford



With Permission of the Controller
of Her Majesty's Stationery Office
© Crown Copyright
License No. AL50453A

MAP
Archaeological Practice Ltd.

SITE: Low Street, Sherburn-in-Elmet

CLIENT: Persimmon Homes & Redrow Homes.

TITLE: Site Location.

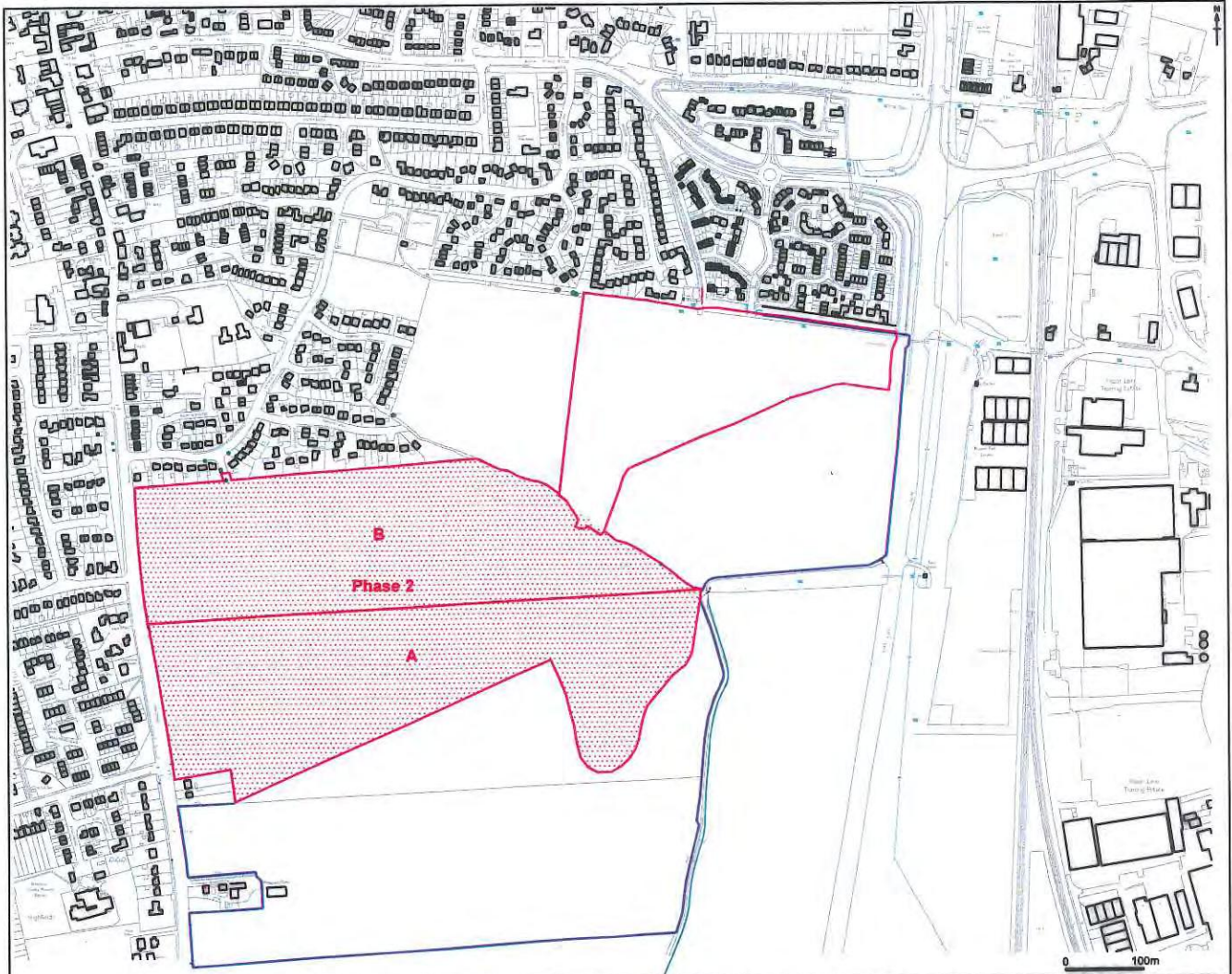
Figure 1.

Scale: 1:50,000

DRAWING REF.:

DRAWN BY: KCH

REVISIONS:



MAP
Archaeological Practice Ltd.

SITE: Low Street, Sherburn-in-Elmet

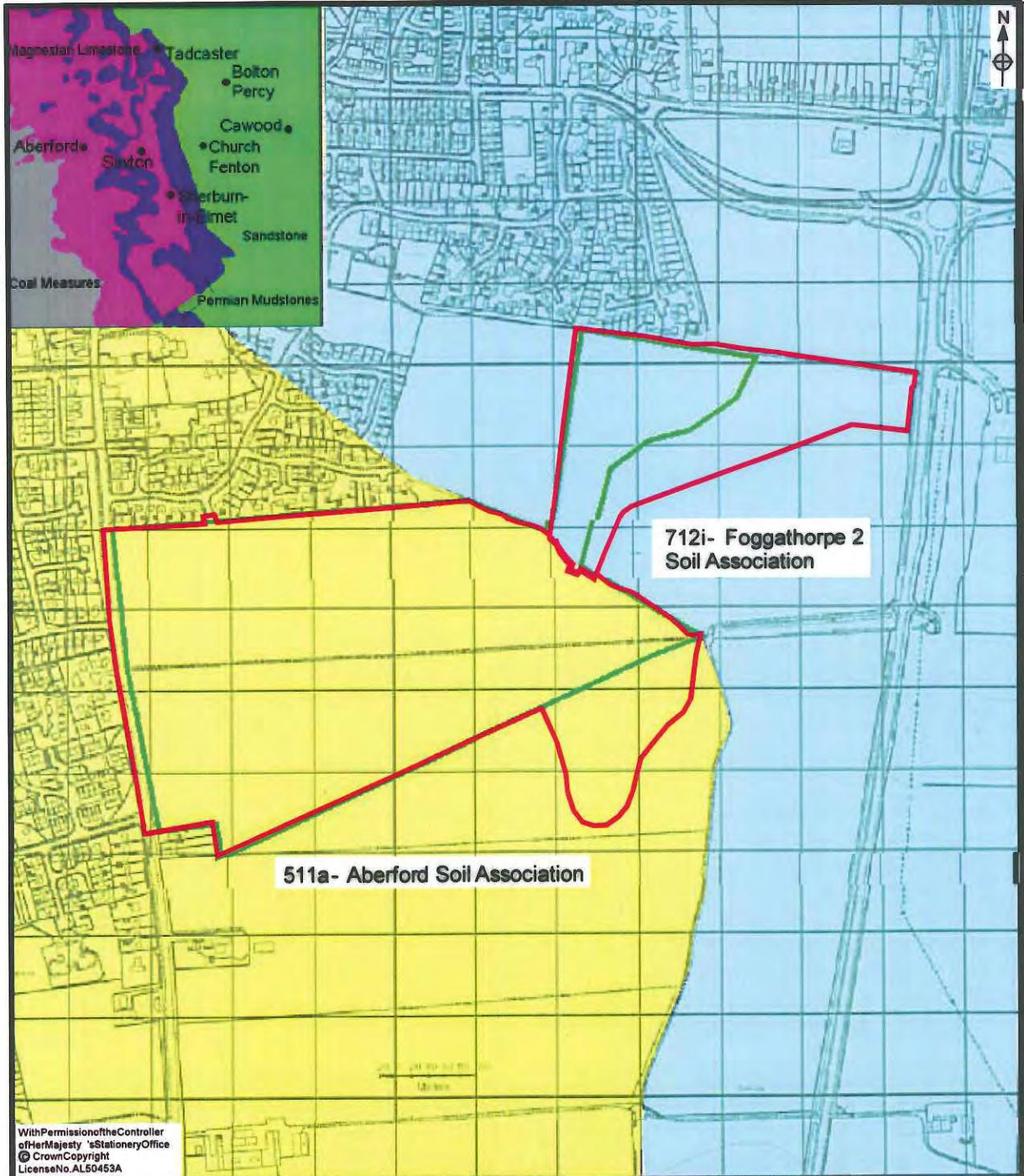
CLIENT: Persimmon Homes & Redrow Homes

TITLE: Development Phase 2 with Archaeological Evaluation Areas A and B.

FIGURE: 2. SCALE: 1:6,000

DRAWN BY: KCH

REVISION: March 2012



With Permission of the Controller
of Her Majesty's Stationery Office
© Crown Copyright
License No. AL50453A

MAP
Archaeological Practice Ltd.

SITE: Low Street, Sherburn-in-Elmet

CLIENT: Persimmon Homes & Redrow Homes.

TITLE: Drift Geology & Soils.

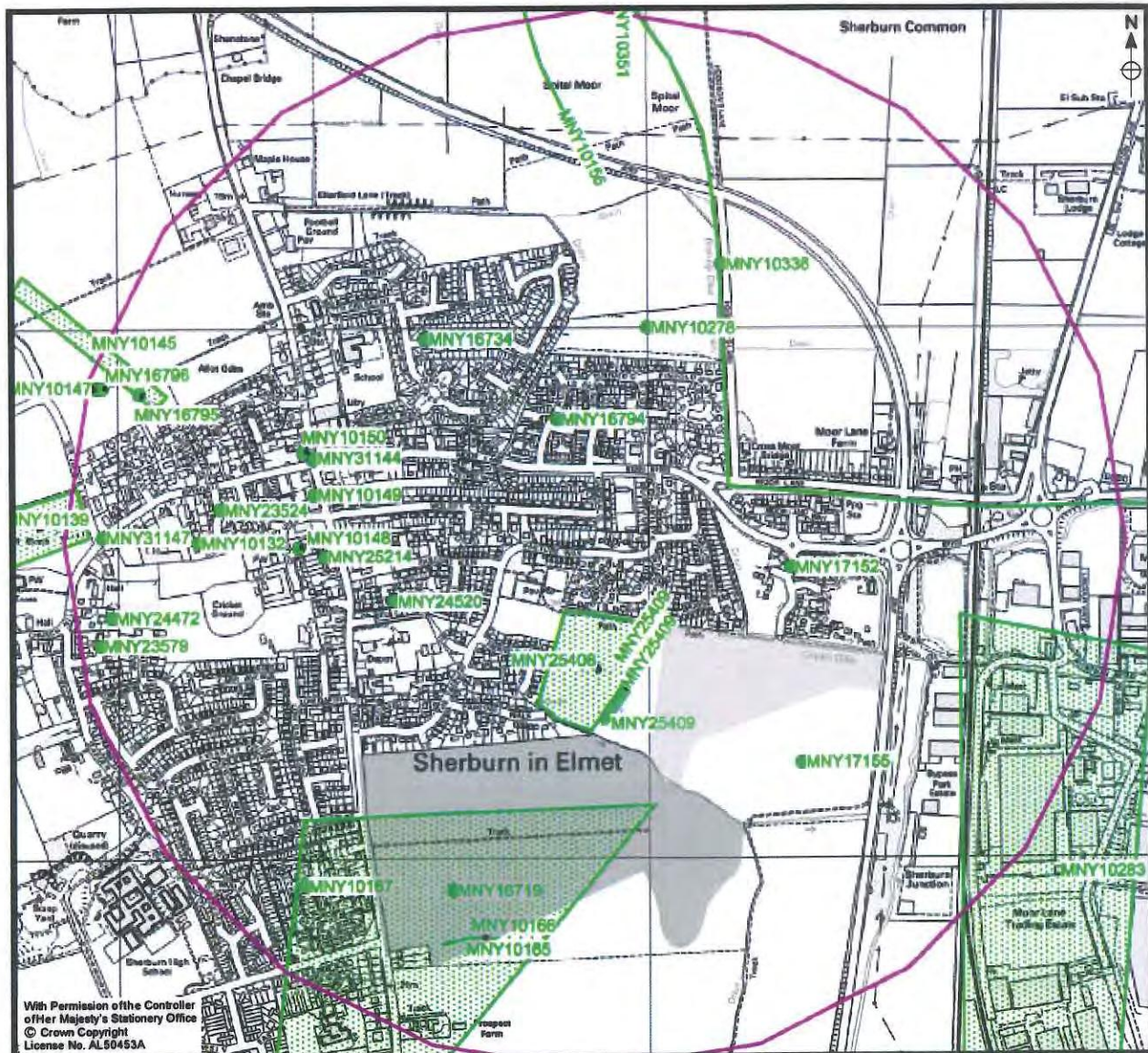
Figure 3.

Scale: 1:7,500

DRAWING REF.:

DRAWN BY: KCH

REVISIONS:



MAP
Archaeological Practice Ltd.

SITE: Low Street, Sherburn-in-Elmet

CLIENT: Persimmon Homes & Redrow Homes.

TITLE: Monuments on the North Yorkshire HER.

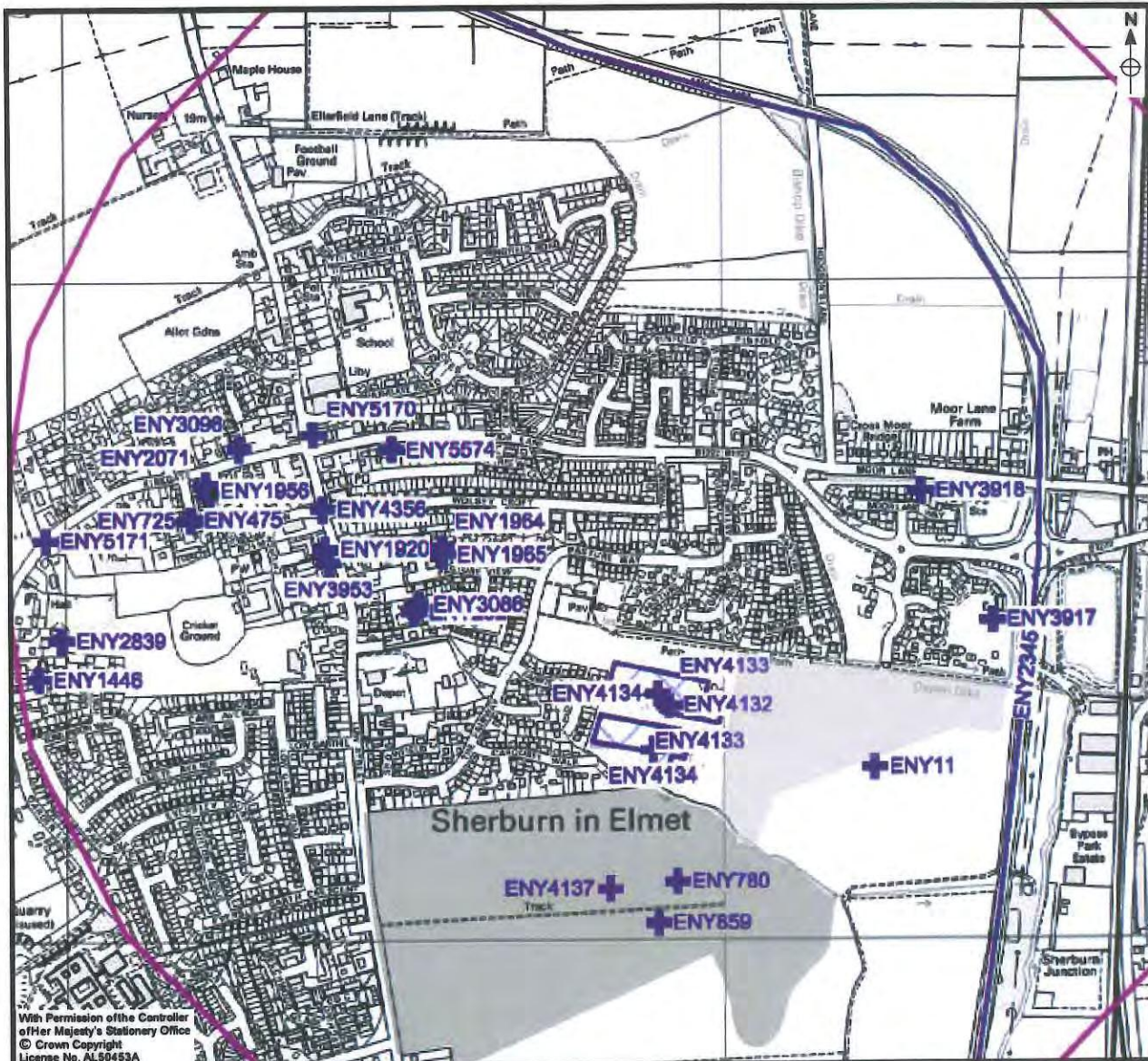
Figure 4.

Scale: 1:12,500

DRAWING REF: NYCC HER

DRAWN BY: KCH

REVISIONS:



With Permission of the Controller
of Her Majesty's Stationery Office
© Crown Copyright
License No. AL50453A

MAP

Archaeological Practice Ltd.

SITE: Low Street, Sherburn-in-Elmet

CLIENT: Persimmon Homes & Redrow Homes.

TITLE: Events on the North Yorkshire
HER.

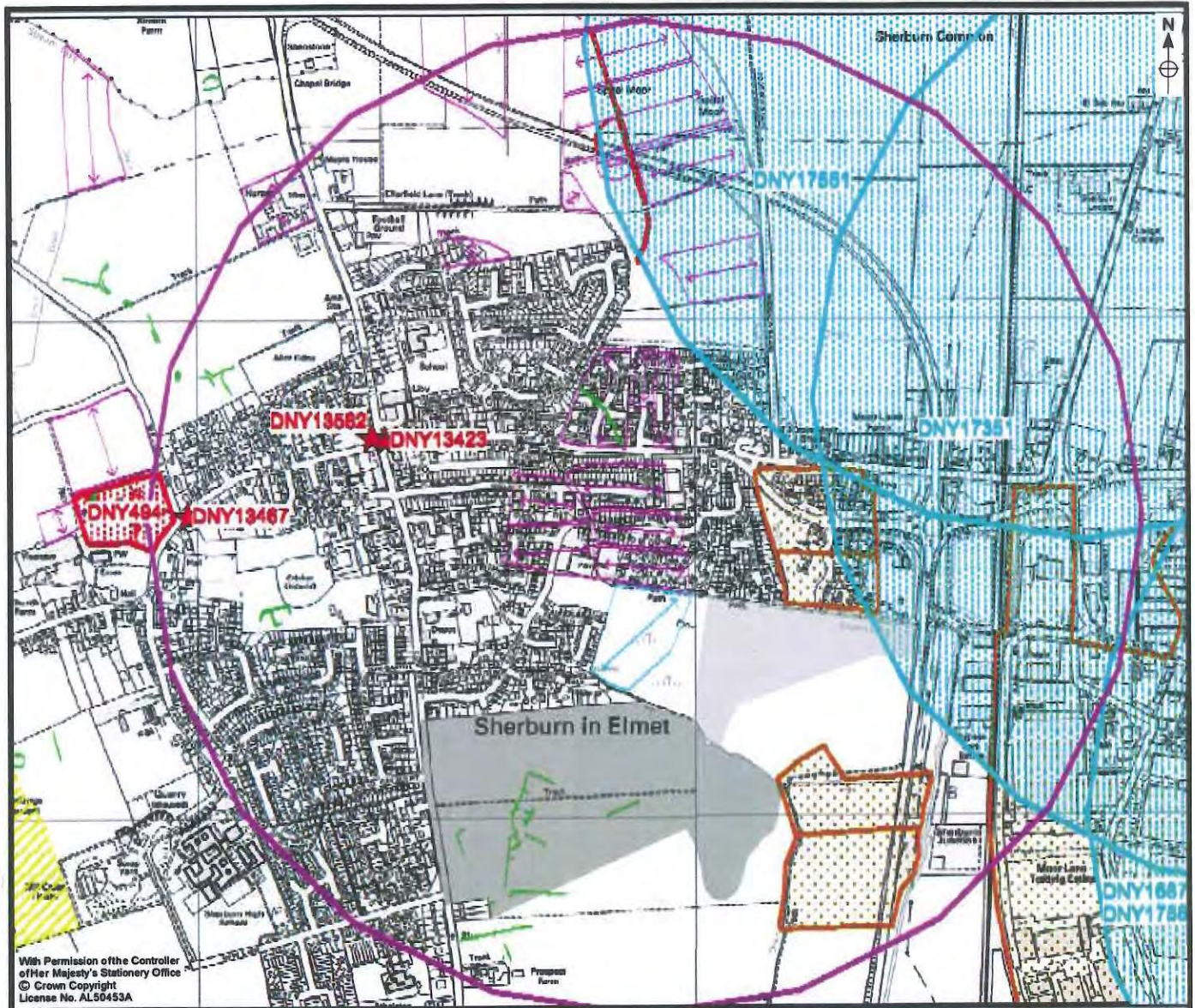
Figure 5.

Scale: 1:10,000

DRAWING REF.: NYCC HER

DRAWN BY: KCH

REVISIONS:



MAP
Archaeological Practice Ltd.

SITE: Low Street, Sherburn-in-Elmet

CLIENT: Persimmon Homes & Redrow Homes.

TITLE: Designations on the North Yorkshire HER.

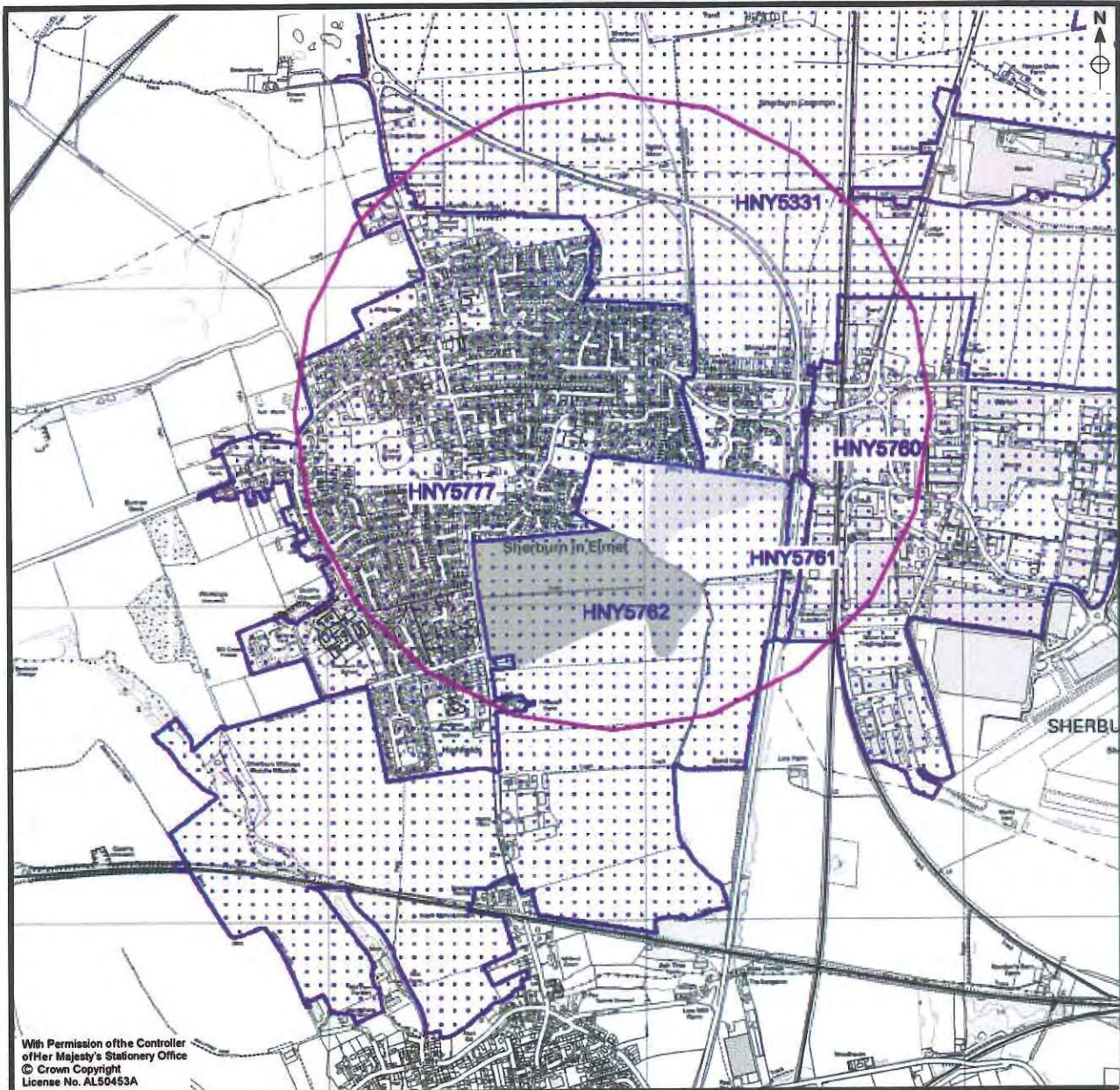
Figure 6.

Scale: 1:12,500

DRAWING REF.: NYCC HER

DRAWN BY: KCH

REVISIONS:



With Permission of the Controller
of Her Majesty's Stationery Office
© Crown Copyright
License No. AL50453A

MAP
Archaeological Practice Ltd.

SITE: Low Street, Sherburn-in-Elmet

CLIENT: Persimmon Homes & Redrow Homes.

TITLE: Historic Landscape
Characterisation.

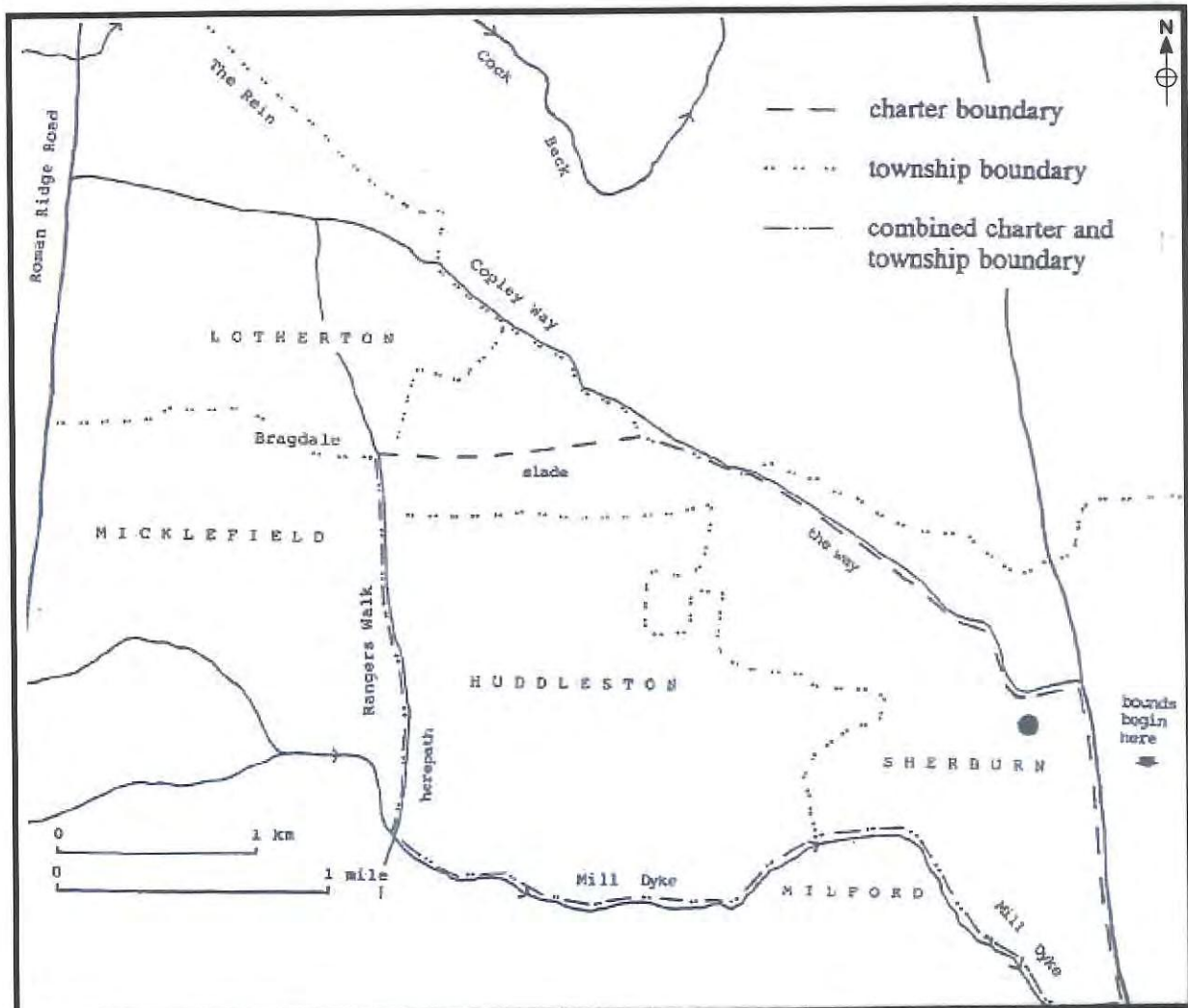
Figure 7.

Scale: 1:20,000

DRAWING REF.: NYCC HER

DRAWN BY: KCH

REVISIONS:



MAP
Archaeological Practice Ltd.

SITE: Low Street, Sherburn-in-Elmet

CLIENT: Persimmon Homes & Redrow Homes.

TITLE: Charter Boundaries in the Medieval Period.

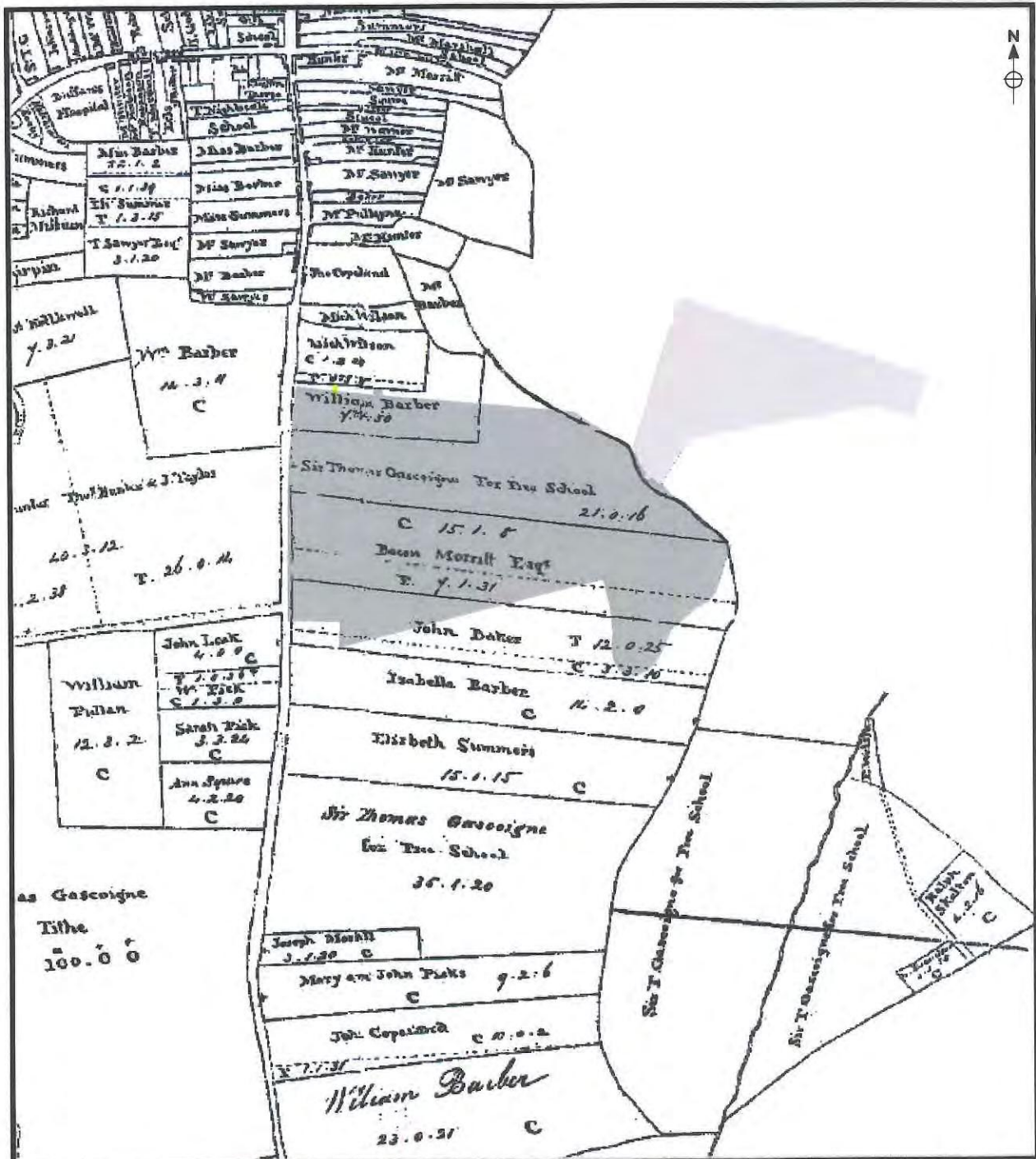
Figure 8.

Not to Scale

DRAWING REF.:

DRAWN BY: KCH

REVISIONS:



MAP
Archaeological Practice Ltd.

SITE: Low Street, Sherburn-in-Elmet

CLIENT: Persimmon Homes & Redrow Homes.

TITLE: Enclosure Award Map for Sherburn-in-Elmet, 1770.

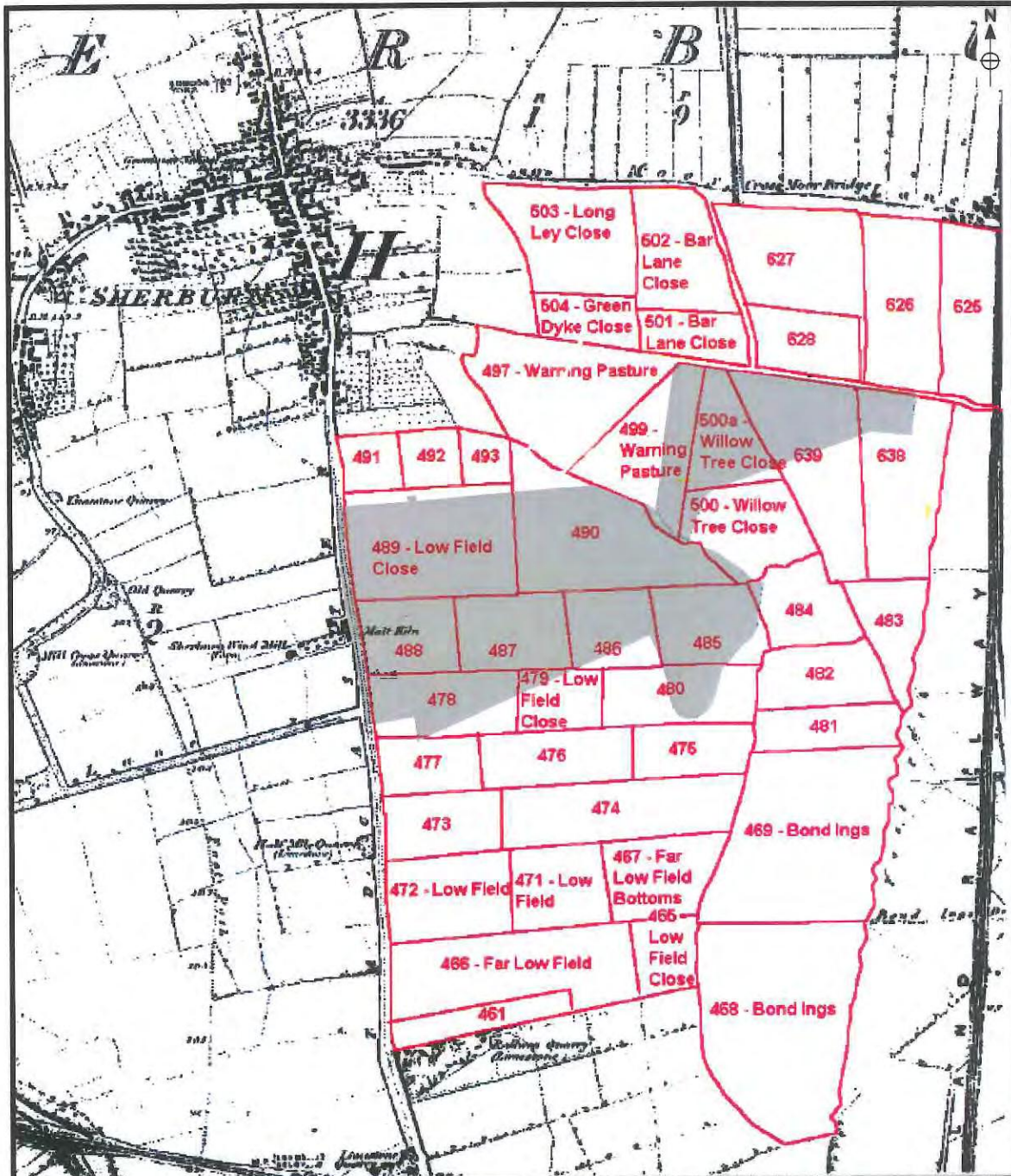
Figure 9.

Not to Scale

DRAWING REF.:

DRAWN BY: KCH

REVISIONS:



MAP
Archaeological Practice Ltd.

SITE: Low Street, Sherburn-in-Elmet

CLIENT: Persimmon Homes & Redrow Homes.

TITLE: 1824 Estate Map transcribed on the 1850 Ordnance Survey Map.

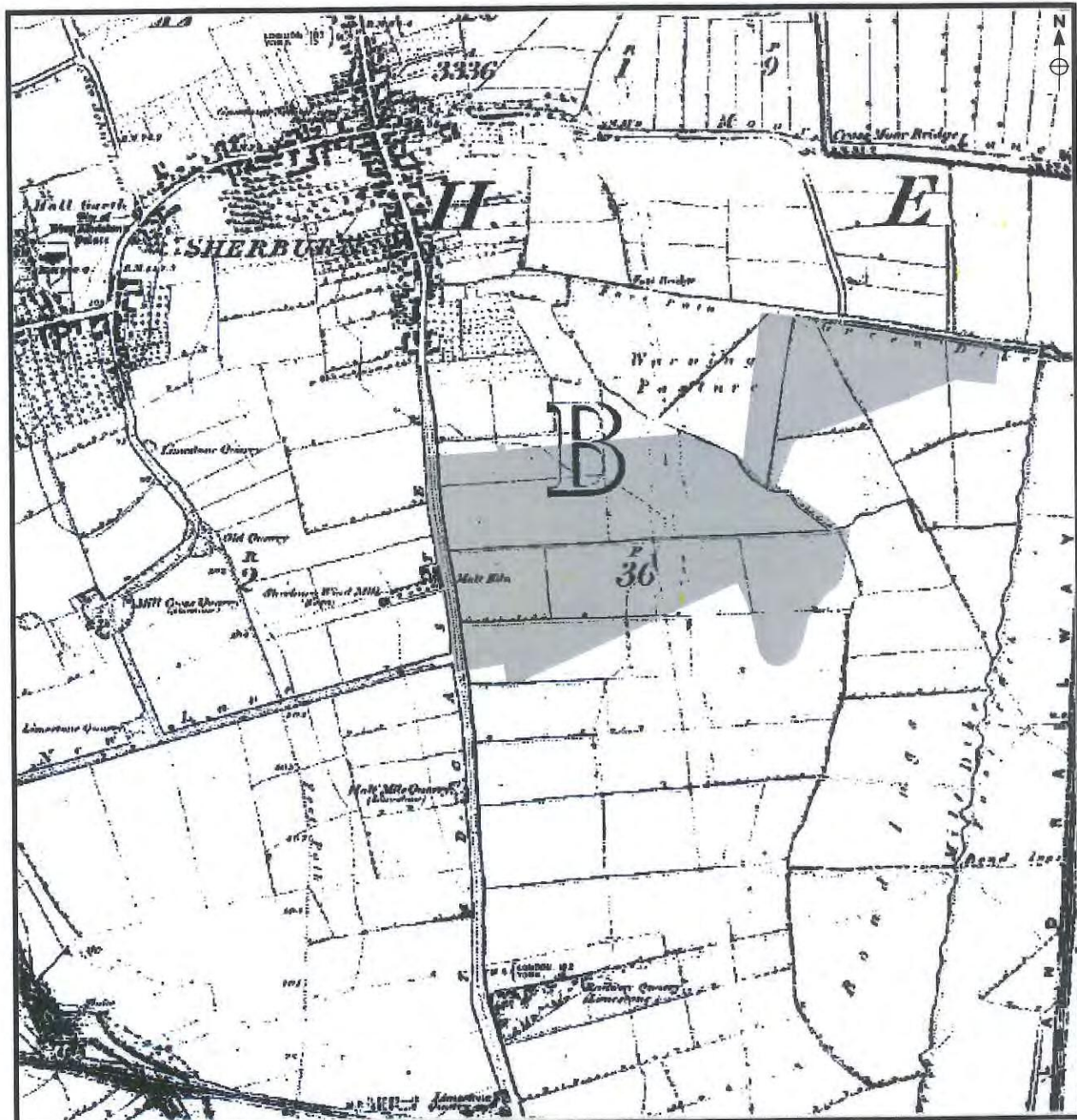
Figure 10.

Scale: 1:10,560

DRAWING REF.:

DRAWN BY: KCH

REVISIONS:



MAP
Archaeological Practice Ltd.

SITE: Low Street, Sherburn-in-Elmet

CLIENT: Persimmon Homes & Redrow Homes.

TITLE: Extract from the 1850 First Edition Ordnance Survey Map.

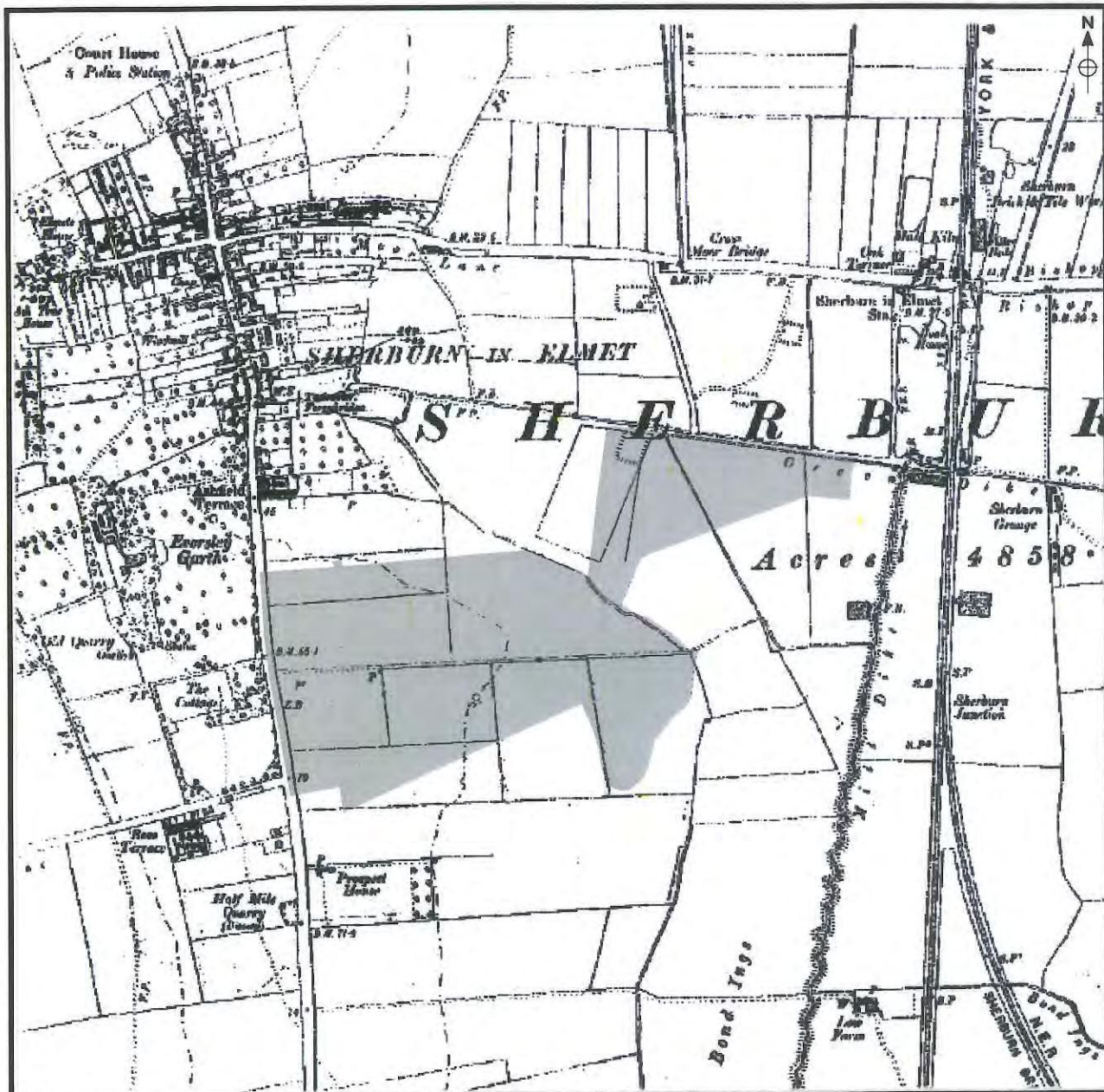
Figure 11.

Scale: 1:10,560

DRAWING REF.:

DRAWN BY: KCH

REVISIONS:



MAP

Archaeological Practice Ltd.

SITE: Low Street, Sherburn-in-Elmet

CLIENT: Persimmon Homes & Redrow Homes.

TITLE: Extract from the 1908 Edition
Ordnance Survey Map.

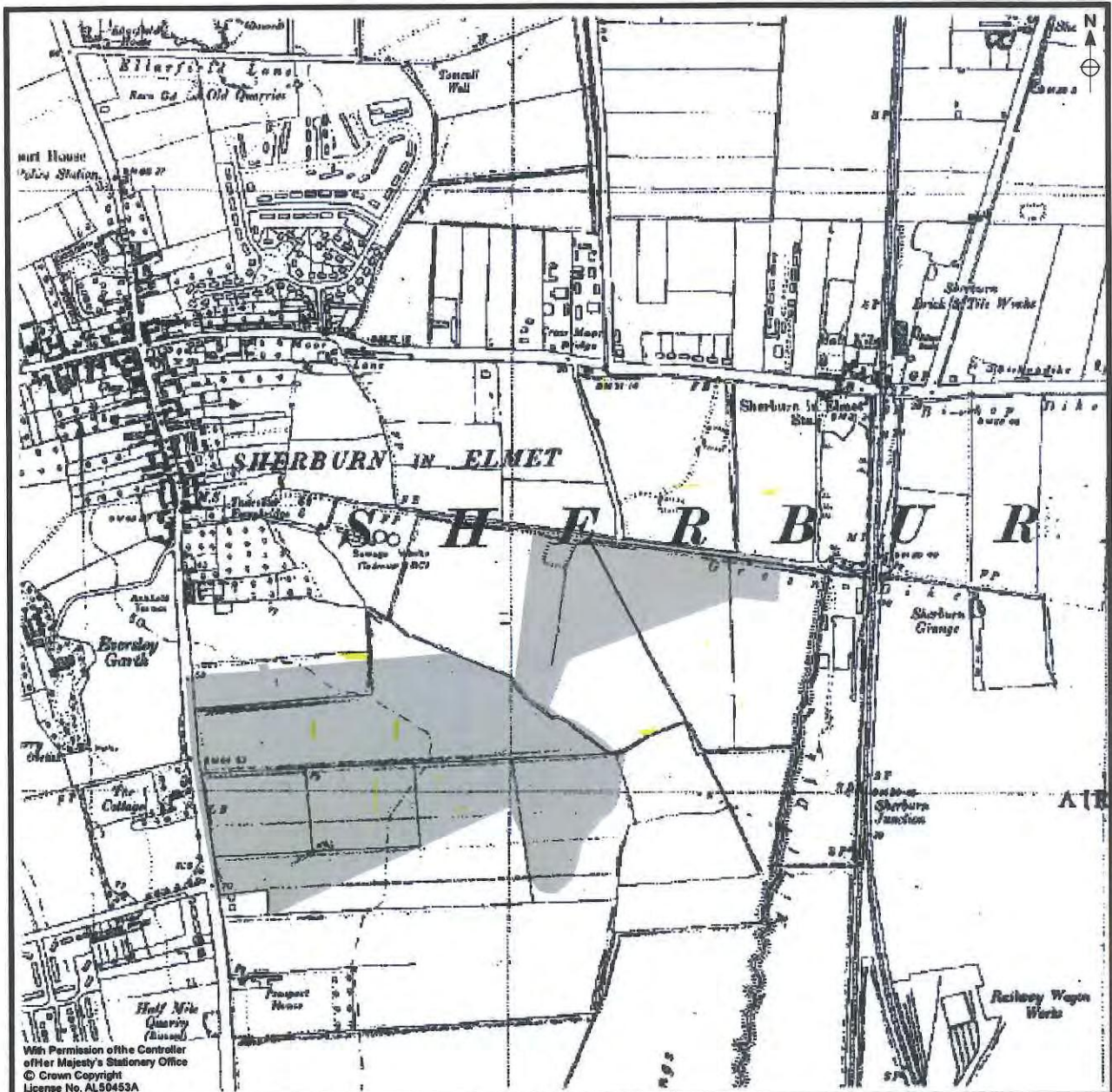
Figure 12.

Scale: 1:10,560

DRAWING REF.:

DRAWN BY: KCH

REVISIONS:



MAP
Archaeological Practice Ltd.

SITE: Low Street, Sherburn-in-Elmet

CLIENT: Persimmon Homes & Redrow Homes.

TITLE: Extract from the 1950 Edition
 Ordnance Survey Map.

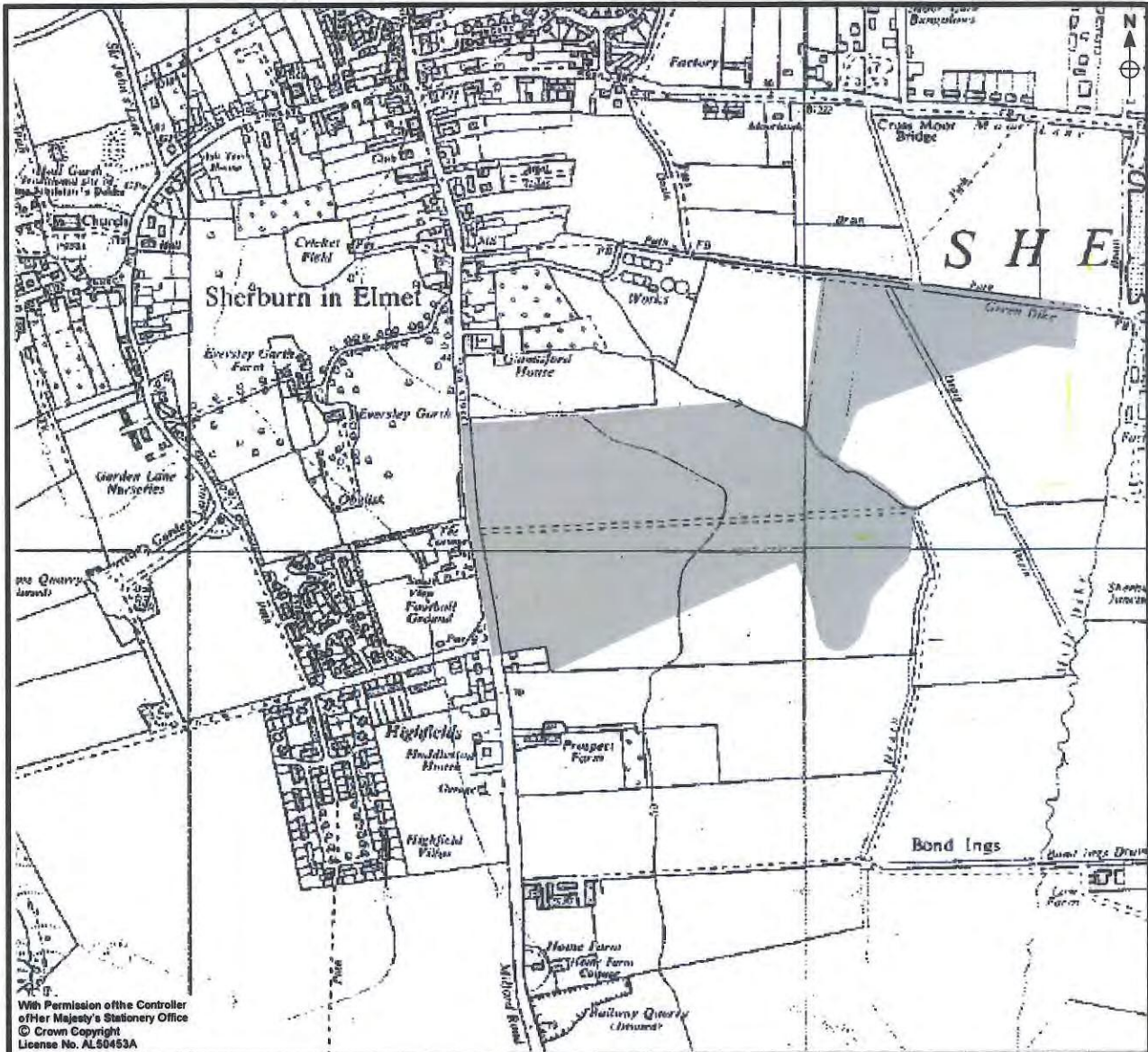
Figure 13.

Scale: 1:10,560

DRAWING REF.:

DRAWN BY: KCH

REVISIONS:



With Permission of the Controller
of Her Majesty's Stationery Office
© Crown Copyright
License No. AL30453A

MAP

Archaeological Practice Ltd.

SITE: Low Street, Sherburn-in-Elmet

CLIENT: Persimmon Homes & Redrow Homes.

TITLE: Extract from the 1967 Edition
Ordnance Survey Map.

Figure 14.

Scale: 1:10,000

DRAWING REF.:

DRAWN BY: KCH

REVISIONS:



MAP
 Archaeological Practice Ltd.

SITE: Low Street, Sherburn-in-Elmet

CLIENT: Persimmon Homes & Redrow Homes.

TITLE: Extract from the 1985 Edition Ordnance Survey Map.

Figure 15.

Scale: 1:10,000

DRAWING REF.:

DRAWN BY: KCH

REVISIONS:



MAP

Archaeological Practice Ltd.

SITE: Low Street, Sherburn-in-Elmet

CLIENT: Persimmon Homes & Redrow Homes.

TITLE: Mineral Rights - Coal (c. 1937)..

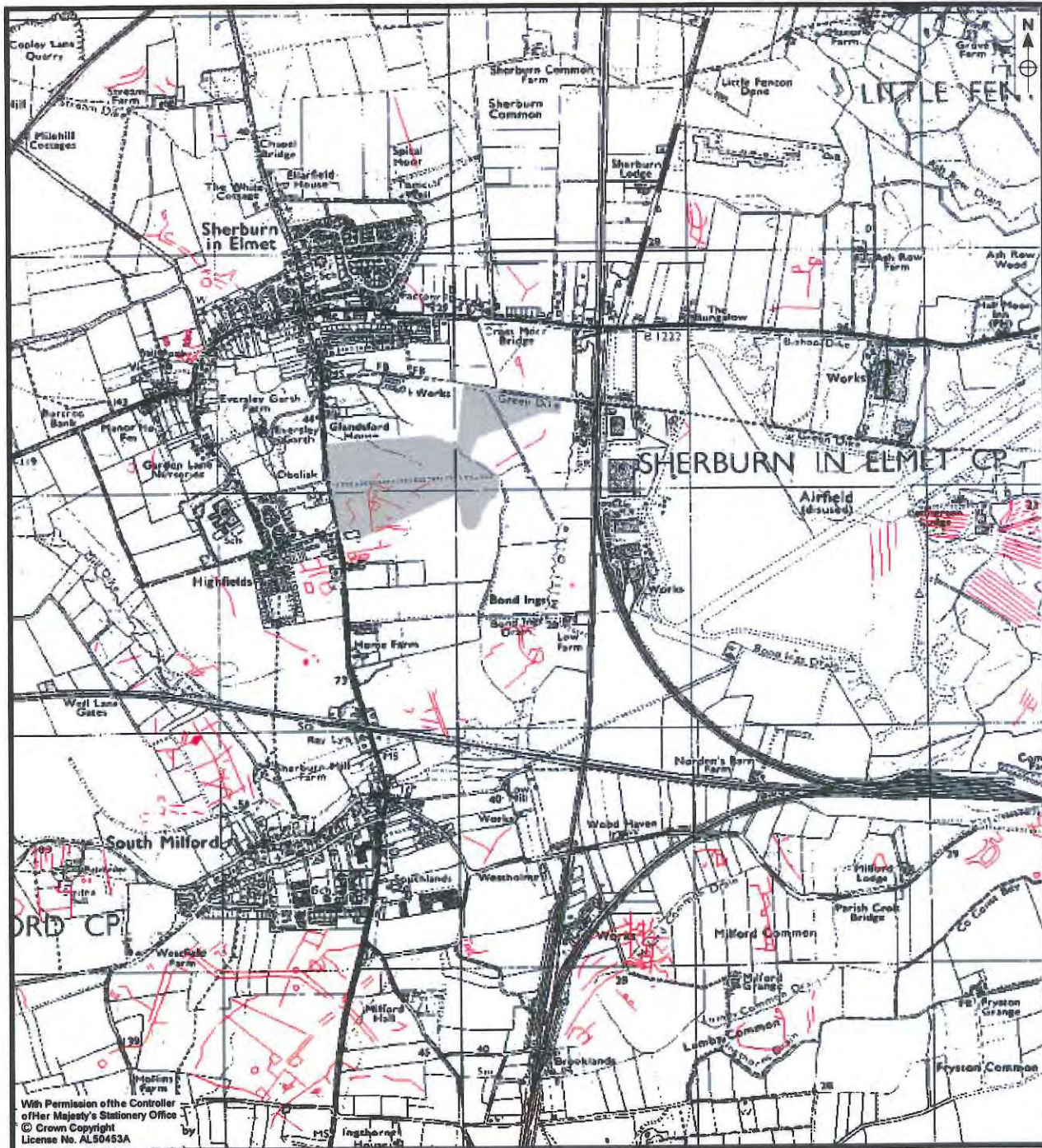
Figure 16.

Scale: 1:10,560

DRAWING REF.:

DRAWN BY: KCH

REVISIONS:



With Permission of the Controller
 of Her Majesty's Stationary Office
 © Crown Copyright
 License No. AL50453A

MAP
Archaeological Practice Ltd.

SITE: Low Street, Sherburn-in-Elmet

CLIENT: Persimmon Homes & Redrow Homes.

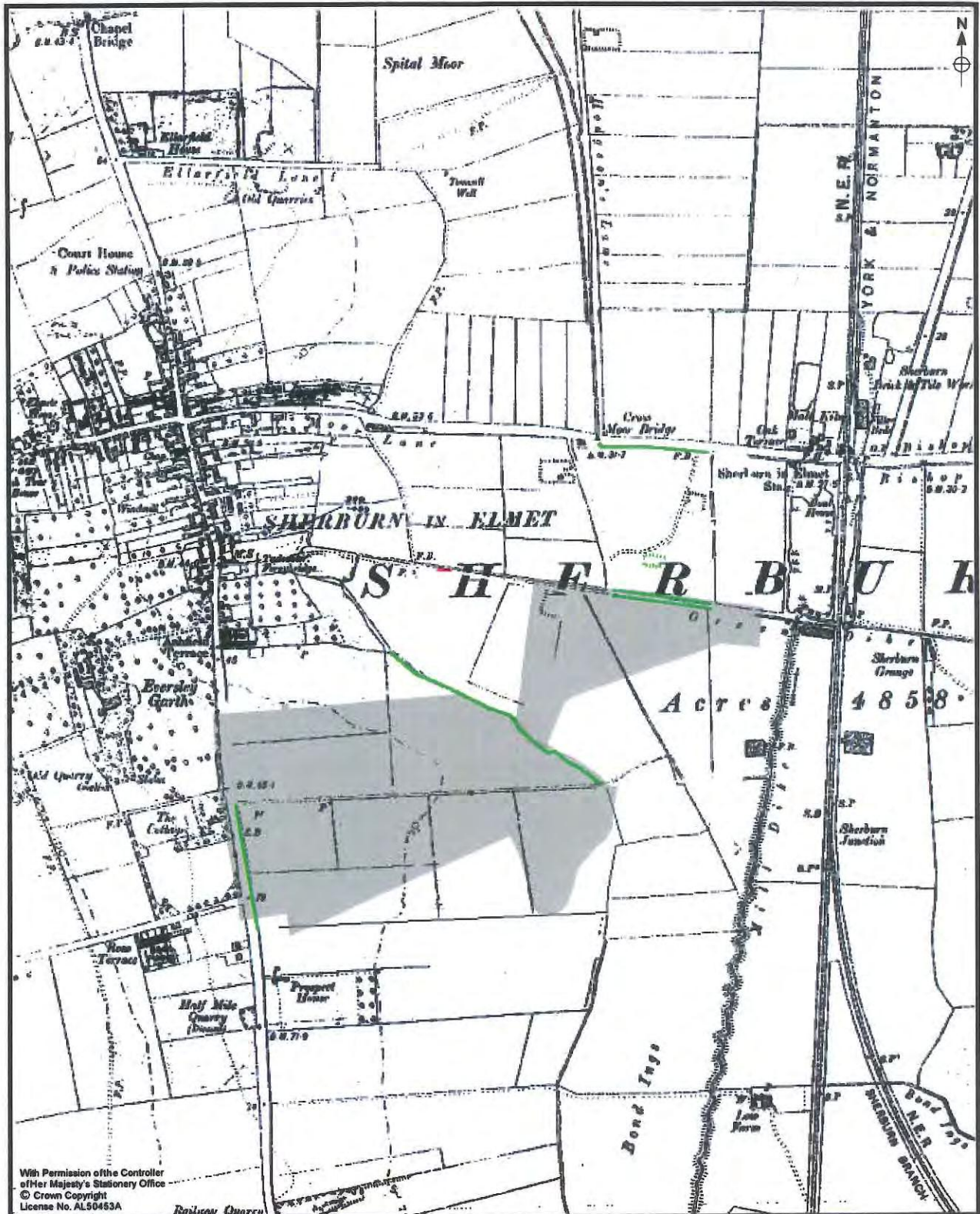
TITLE: Aerial Photographic Cropmarks.

Figure 17. **Scale:** 1:25,000

DRAWING REF.:

DRAWN BY: KCH

REVISIONS:



With Permission of the Controller
of Her Majesty's Stationery Office
© Crown Copyright
License No. AL50453A

MAP
Archaeological Practice Ltd.

SITE: Low Street, Sherburn-in-Elmet

CLIENT: Persimmon Homes & Redrow Homes.

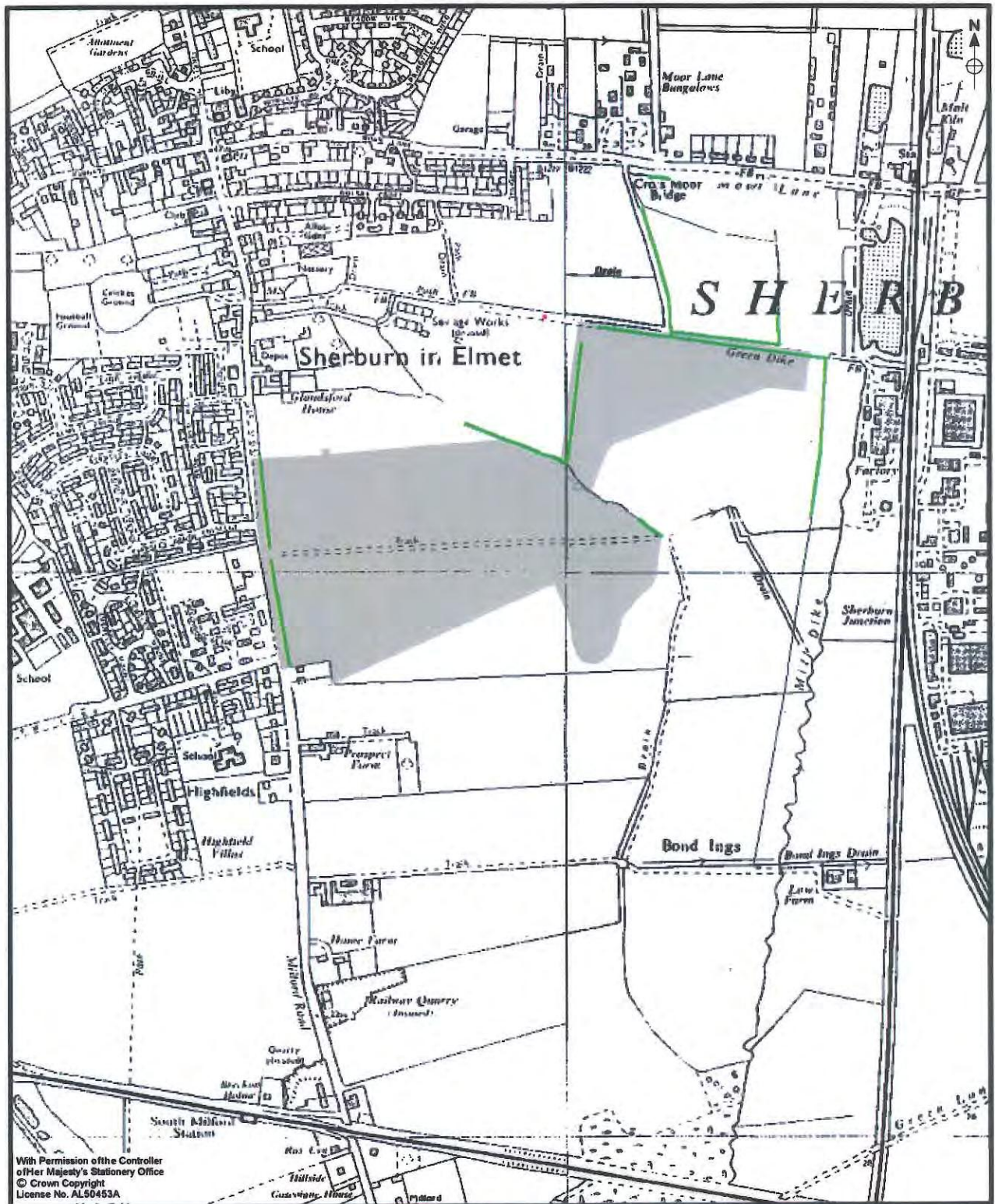
TITLE: Earthwork Survey (MAP 1997).

Figure 18. Scale: 1:10,560

DRAWING REF.:

DRAWN BY: KCH

REVISIONS:



With Permission of the Controller
of Her Majesty's Stationery Office
© Crown Copyright
License No. AL50453A

MAP
Archaeological Practice Ltd.

SITE: Low Street, Sherburn-in-Elmet

CLIENT: Persimmon Homes & Redrow Homes.

TITLE: Hedgerow Survey (MAP 1997).

Figure 19.

Scale: 1:10,000

DRAWING REF.:

DRAWN BY: KCH

REVISIONS:



MAP
Archaeological Practice Ltd.

SITE: Low Street, Sherburn-in-Elmet

CLIENT: Persimmon Homes & Redrow Homes

TITLE: Area A Intensive Fieldwalking: Flint Artefacts

FIGURE: 20

SCALE: 1:5,000

DRAWN BY: KCH

REVISION: March 2012



MAP
Archaeological Practice Ltd.

SITE: Low Street, Sherburn-in-Elmet

CLIENT: Persimmon Homes & Redrow Homes

TITLE: Area A Intensive Fieldwalking: Roman Pottery

FIGURE: 21.

SCALE: 1:5,000

DRAWN BY: KCH

REVISION: March 2012



MAP
Archaeological Practice Ltd.

SITE: Low Street, Sherburn-in-Elmet

CLIENT: Persimmon Homes & Redrow Homes

TITLE: Area A Intensive Fieldwalking: Medieval Pottery

FIGURE: 22.

SCALE: 1:5,000

DRAWN BY: KCH

REVISION: March 2012



MAP
Archaeological Practice Ltd.

SITE: Low Street, Sherburn-in-Elmet

CLIENT: Persimmon Homes & Redrow Homes

TITLE: Area A Intensive Fieldwalking: Post-medieval Pottery

FIGURE: 23.

SCALE: 1:5,000

DRAWN BY: KCH

REVISION: March 2012



MAP
Archaeological Practice Ltd.

SITE: Low Street, Sherburn-in-Elmet

CLIENT: Persimmon Homes & Redrow Homes

TITLE: Area A Intensive Fieldwalking: Modern Pottery

FIGURE: 24.

SCALE: 1:5,000

DRAWN BY: KCH

REVISION: March 2012



MAP
Archaeological Practice Ltd.

SITE: Low Street, Sherburn-in-Elmet

CLIENT: Persimmon Homes & Redrow Homes

TITLE: Geophysical Survey Results: Archaeological Features

FIGURE: 25.

SCALE: 1:5,000

DRAWN BY: KCH

REVISION: March 2012



MAP
Archaeological Practice Ltd.

SITE: Low Street, Sherburn-in-Elmet

CLIENT: Persimmon Homes & Redrow Homes

TITLE: Archaeological Evaluation Trench Location.

FIGURE: 26.

SCALE: 1:5,000

DRAWN BY: KCH

REVISION: March 2012



MAP
Archaeological Practice Ltd.

SITE: Low Street, Sherburn-in-Elmet

CLIENT: Persimmon Homes & Redrow Homes

TITLE: Geotechnical Testpit Locations

FIGURE: 27.

SCALE: 1:5,000

DRAWN BY: KCH

REVISION: March 2012



**LOW STREET, SHERBURN-IN-ELMET
PROPOSED RESIDENTIAL DEVELOPMENT - MARCH 2012**

<p>MAP Archaeological Practice Ltd.</p>	
<p>SITE: Low Street, Sherburn-in-Elmet</p>	
<p>CLIENT: Persimmon Homes & Redrow Homes.</p>	
<p>TITLE: Phase 2 and 3 Composite Masterplan (March 2012)</p>	<p>Scale: 1:5,000</p>
<p>Figure 28.</p>	
<p>DRAWING REF:</p>	
<p>DRAWN BY: KCH</p>	
<p>REVISIONS:</p>	