



Plate 1.
General view of Building 1, facing south-east.

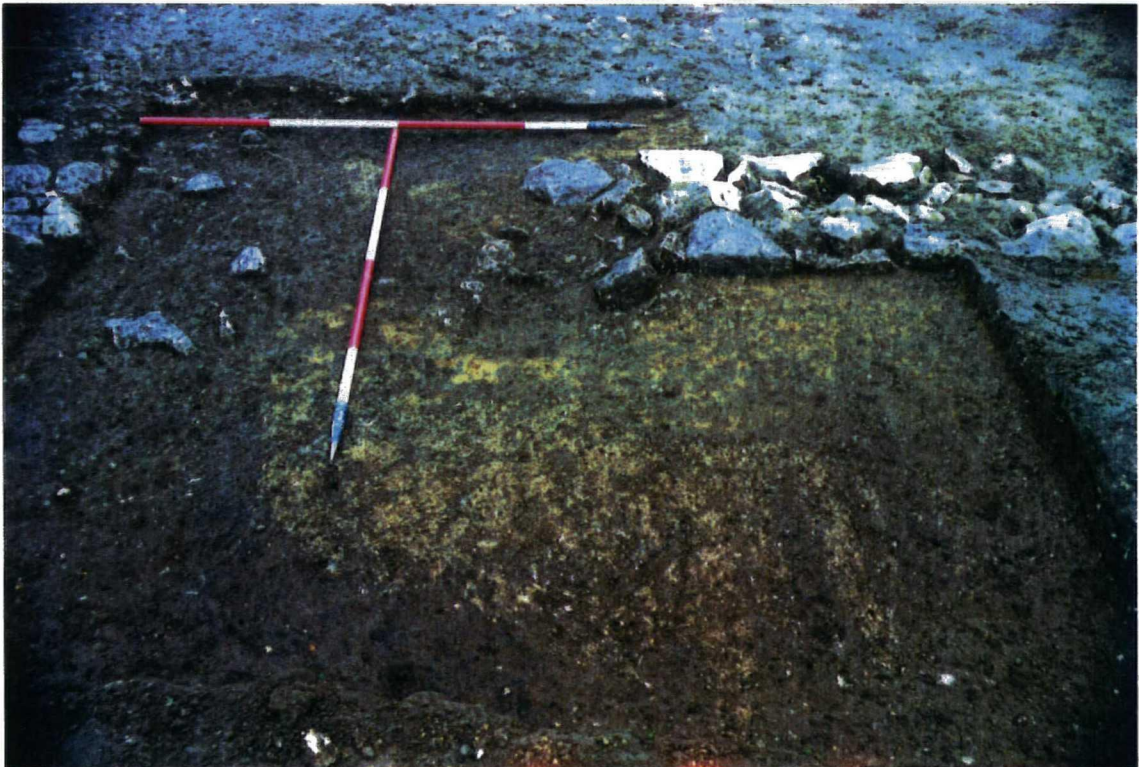


Plate 2.
Building 1, entrance and east wall, facing west-south-west.



Plate 3.
General view of Buildings 1 and 2, facing south-east.



Plate 4.
General view of Building 3, facing south-east.



Plate 5.
General view of the Roman Road, facing east.



Plate 6.
View of ditch segments, cuts 178 and 188, facing north-west.



Plate 7.
View of cremated bone, context 117, and pottery vessel, context 118, facing north.



Plate 8.
View of cremated bone, context 154, and pottery vessel, context 155, facing north.



Plate 9.
Copper alloy brooch in situ.

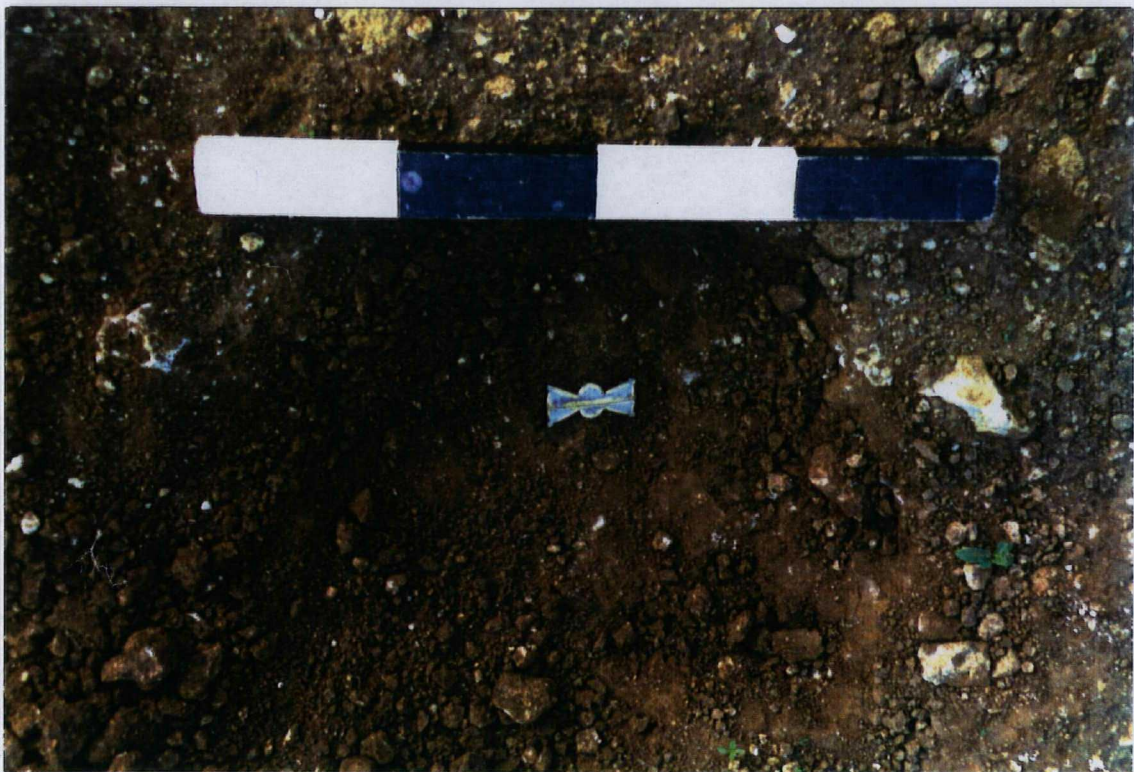


Plate 10.
Silver and gold belt fitting in situ.

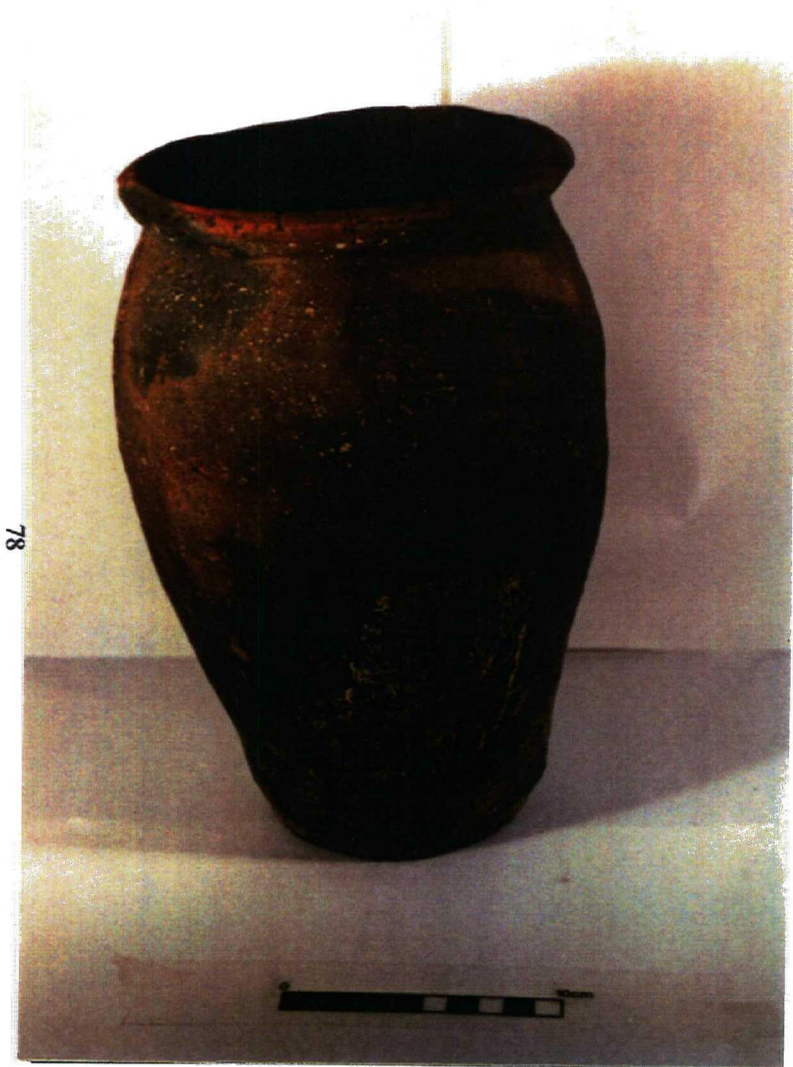


Plate 11.
Cremation pottery vessel, context 155.



Plate 12.
Cremation pottery vessel, context 118.

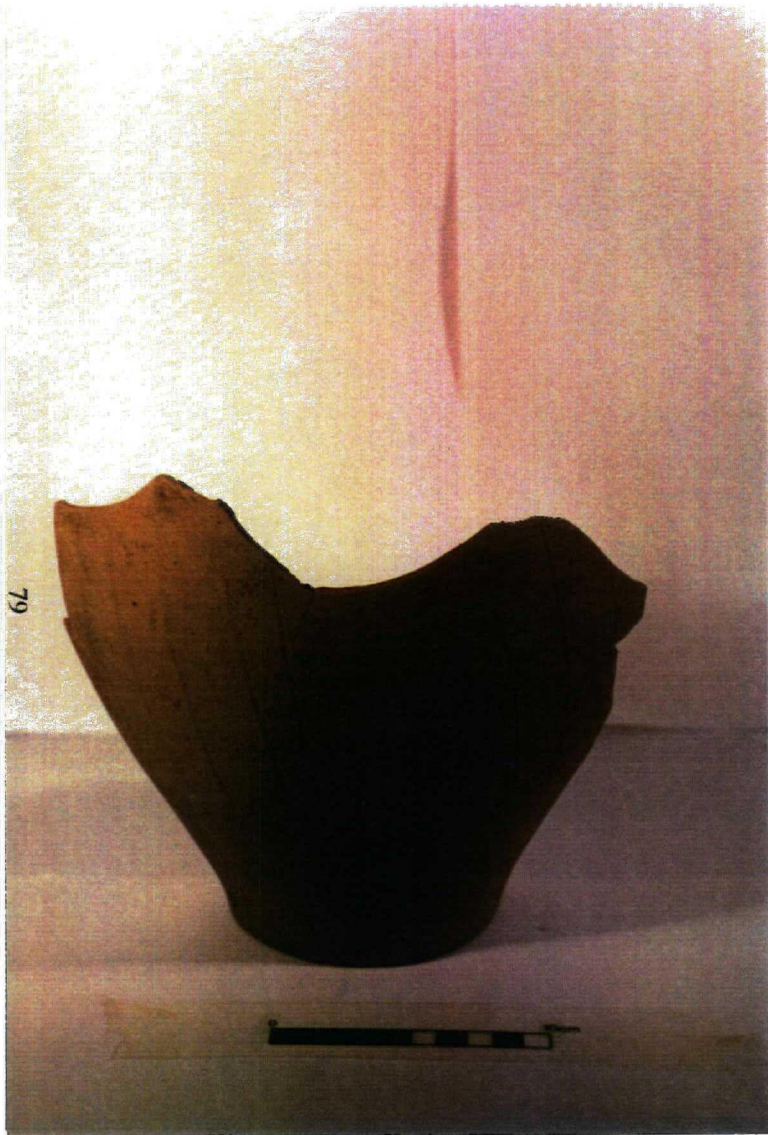


Plate 13.
Cremation pottery vessel, context 170.



Plate 14.
Cremation pottery vessel, context 127.