

Fig 1 Lawkland Location map



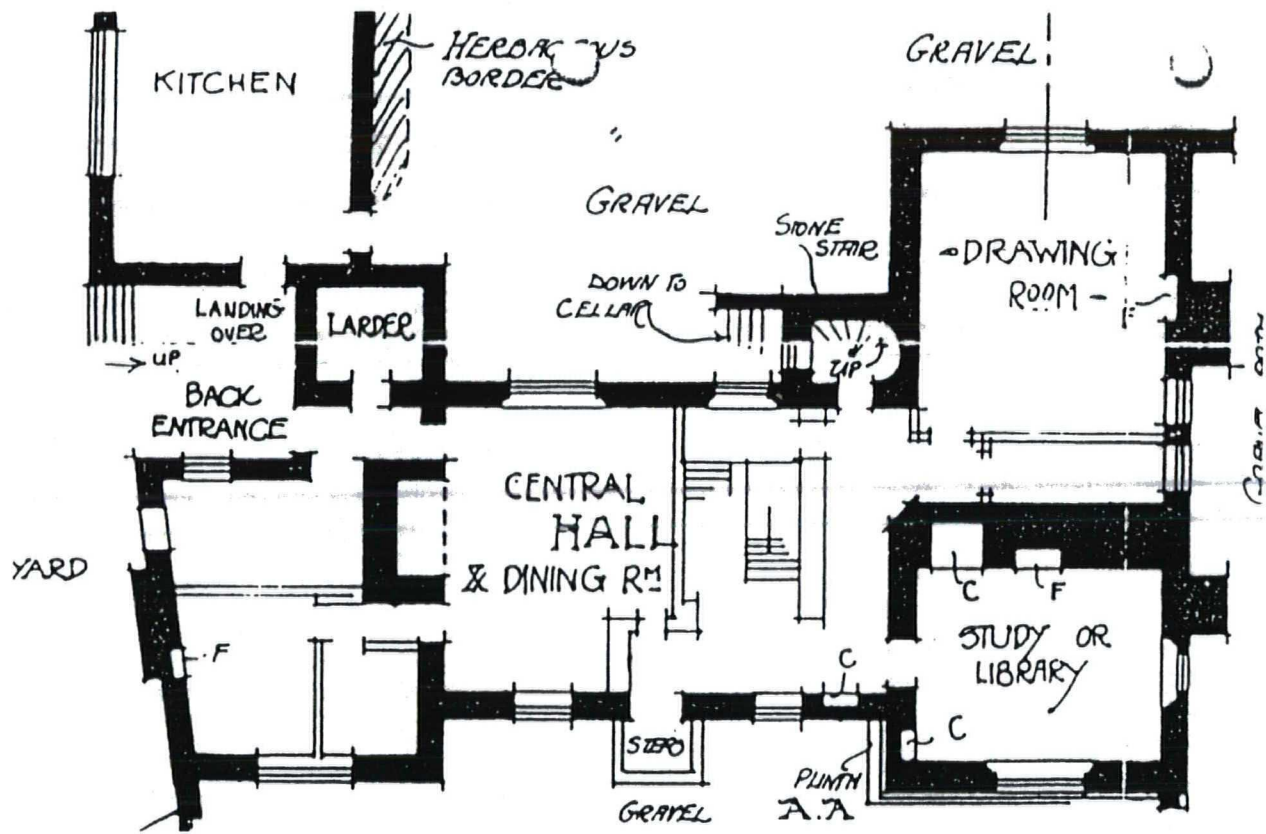
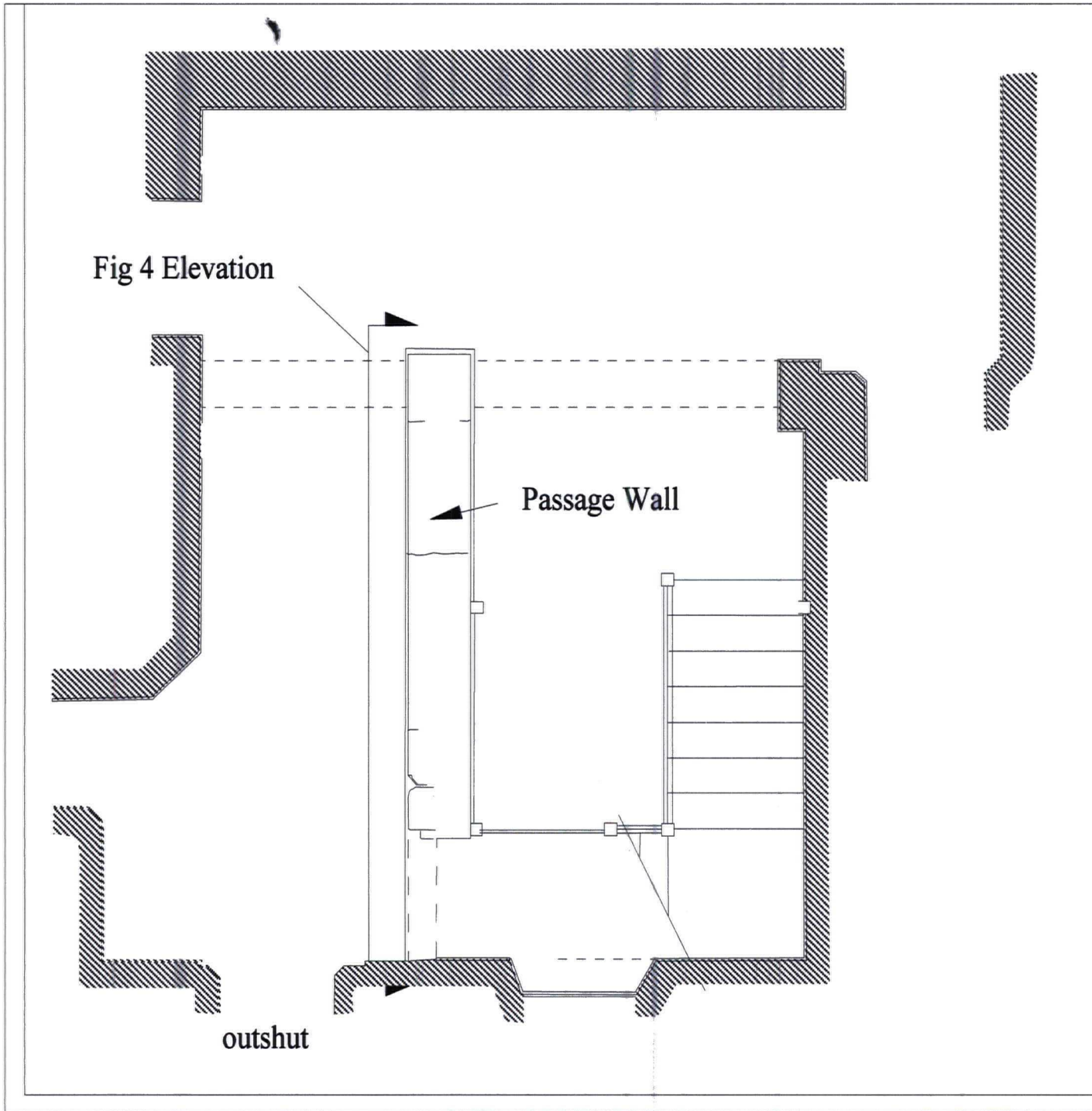


Fig 2. Plan of Lawkland Hall



LAWKLAND HALL  
Settle  
North Yorks.

PLAN NAME:

PLAN OF THE STAIR  
HALLWAY

COMMISSIONED BY:

Mason Gillibrand  
Architects

FIGURE 3

Base plan provided by Mason  
Gillibrand (Architects)



SCALE 1:50 (A4)

DRAWN BY: JQ

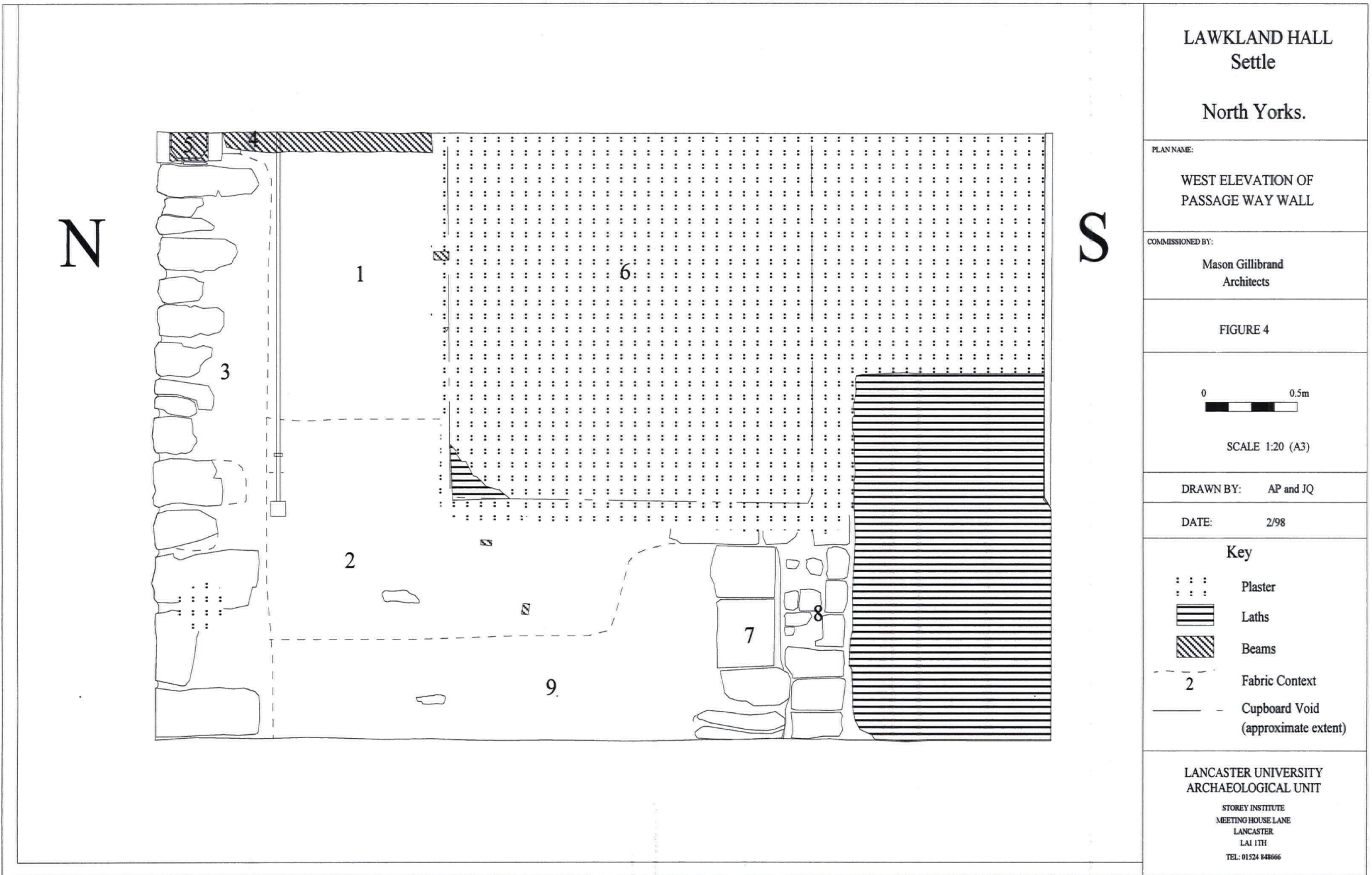
DATE: 2/98

LANCASTER UNIVERSITY  
ARCHAEOLOGICAL UNIT

STOREY INSTITUTE  
MEETING HOUSE LANE  
LANCASTER  
LA1 1TH

TEL: 01524 848666

Fig 3 Plan of Stair Hallway



LAWKLAND HALL  
Settle

North Yorks.

PLAN NAME:

WEST ELEVATION OF  
PASSAGE WAY WALL

COMMISSIONED BY:

Mason Gillibrand  
Architects

FIGURE 4








SCALE 1:20 (A3)

DRAWN BY: AP and JQ

DATE: 2/98

Key

-  Plaster
-  Laths
-  Beams
-  Fabric Context
-  Cupboard Void  
(approximate extent)

LANCASTER UNIVERSITY  
ARCHAEOLOGICAL UNIT

STOREY INSTITUTE  
MEETING HOUSE LANE  
LANCASTER  
LA1 1TH  
TEL: 01524 848666

Fig 4 West Elevation of Passage Way Wall





Plate 1 Lawkland Hall Northern Facade



Plate 2 West Face of Passageway Wall – oblique view



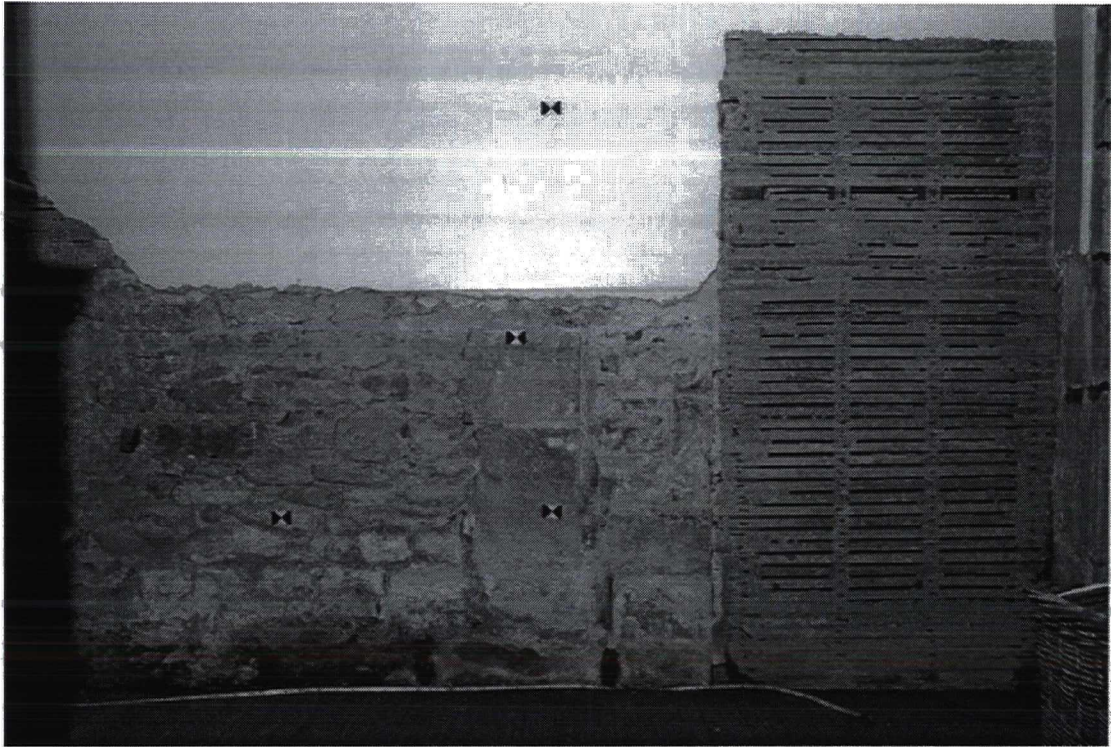


Plate 3 West Face of Passageway Wall showing truncated door jamb



Plate 4 West Face of Passageway Wall – ceiling timbers at the north end of the wall





Plate 5 East Face of Passageway Wall Following Removal of Wall Finishes