

the insertion of several service trenches, has not completely truncated archaeological deposits. Any further trenching within Castle Yard west of the toilet block should therefore be monitored.

2.5 Finds Assessment

Context

u/s	one slipware sherd, late 17th to early 18th century .
007	one tin glazed earthenware sherd, 19th to 20th century.
203	one tobacco pipe stem fragment, 19th century.
204	one fragment of daub, one piece of modern glass.
207	two sherds, 19th century.
217	one small brick fragment
	one tobacco pipe stem fragment, 19th century.
	one slipware sherd late 17th to early 19th century.
	one piece of bone
	one post-medieval redware sherd, c. 18th to 19th century.
	one blackware sherd, 18th to 19th century.
	one slipware sherd, c. 18th century.
	two small fragments of tile
317	one tin glazed earthenware sherd, 19th to 20th century.

3. Discussion and Conclusions

The cable trenches in Knaresborough have provided a brief glimpse of the deposits beneath the thoroughfares associated with the medieval town centre. The majority have been heavily disturbed and truncated by modern service trenches and resurfacing of the roads with tarmac. The only surviving archaeology to be observed appears to be post-medieval in date and is situated outside the public toilets in Castle Yard. Here, several ditches containing 18th and 19th century material, possibly indicating the latest backfilling of features either associated with the moat or burgage plots close to the eastern side of the moat were identified. A possible pit in Cheapside was unfortunately undated. Other deposits recorded appeared to be 19th century in date associated with the upper portion of Brewerton Street, including the remains of a brick wall and a cement floor, possibly associated with an outbuilding prior to the street's construction in the 19th century. Unfortunately the material recovered, though useful in shedding light on the truncation and disturbance of deposits and the preservation of certain later features in areas such as Castle Yard, sheds no light on the medieval town, all deposits and truncation processes being related to post-medieval and modern activities.

4. Archaeological Implications

Monitoring should continue in Castle Yard and Market Place in an attempt to determine the extent and nature of the post-medieval truncation of archaeological deposits.

Any work within the Ancient Monument itself is prohibited without Scheduled Monument Consent and we would advise that the cable trenches planned for the Museum at Castle Court House in the Castle Grounds and therefore within the archaeologically protected area should not be carried out without first obtaining Scheduled Monument Consent.

5. List of Sources

Jennings, B. (ed) (1970) *A History of Harrogate and Knaresborough*, Huddersfield.

Kellett, A. (1991) *King John in Knaresborough: The first Known Royal Maundy*; in *Yorkshire Archaeological Journal*, vol. 62, pp 69-90.

Stockwell, M. (1993) *Rear of 14 High Street, Knaresborough, N. Yorkshire*, York Archaeological Trust, York.

York Archaeological Trust (1996) *Context Recording Manual*, York.

6. List of Contributors

Watching Brief and Report

Neil Macnab
Mike Andrews

Editor

David Brinklow

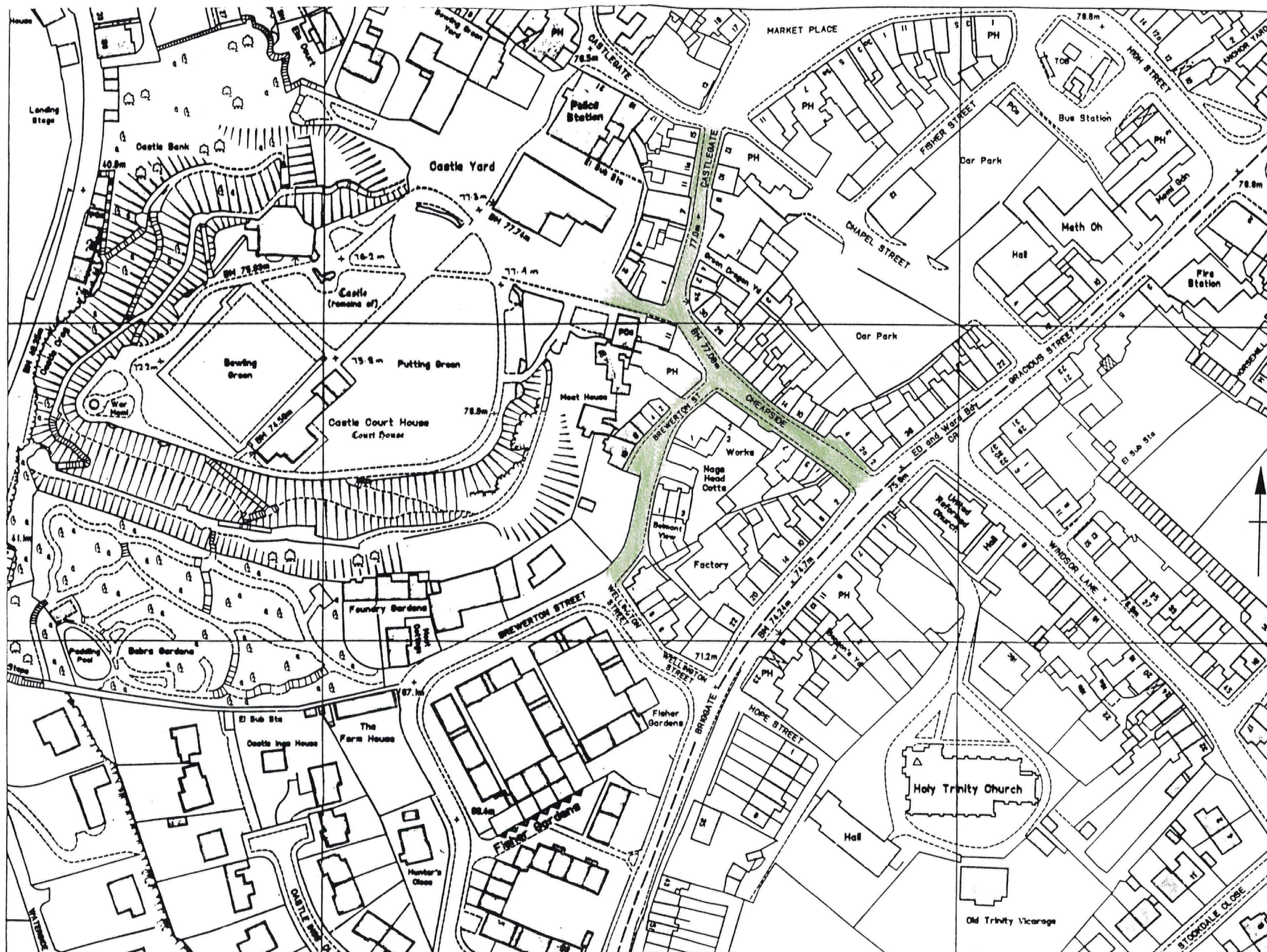


Fig. 1 Site Location Plan