

Figure 10. Land divisions, c.1850. First Edition Ordnance Survey Map.







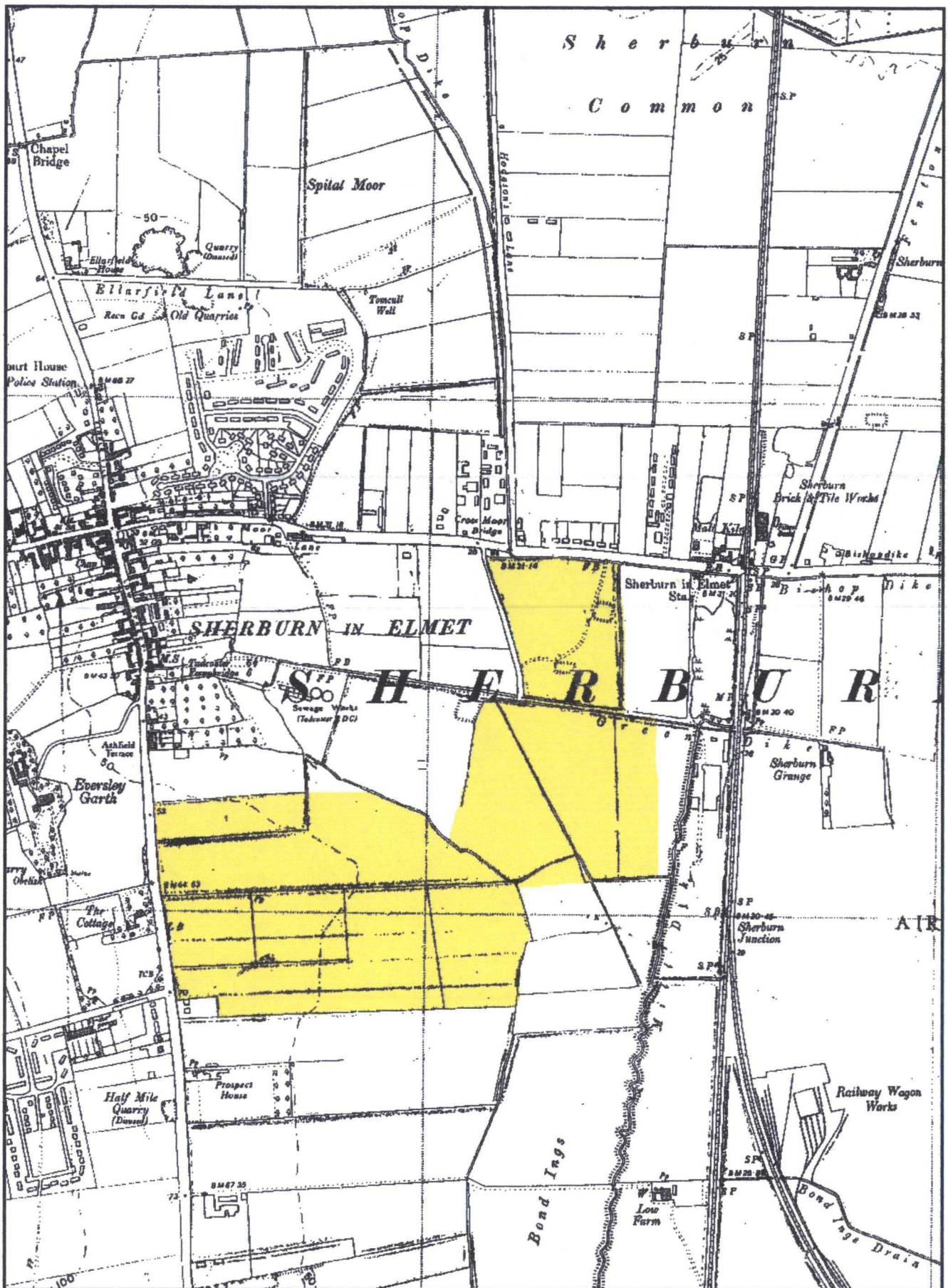


Figure 12. Land divisions, c. 1950. Ordnance Survey 1:10560 Map.



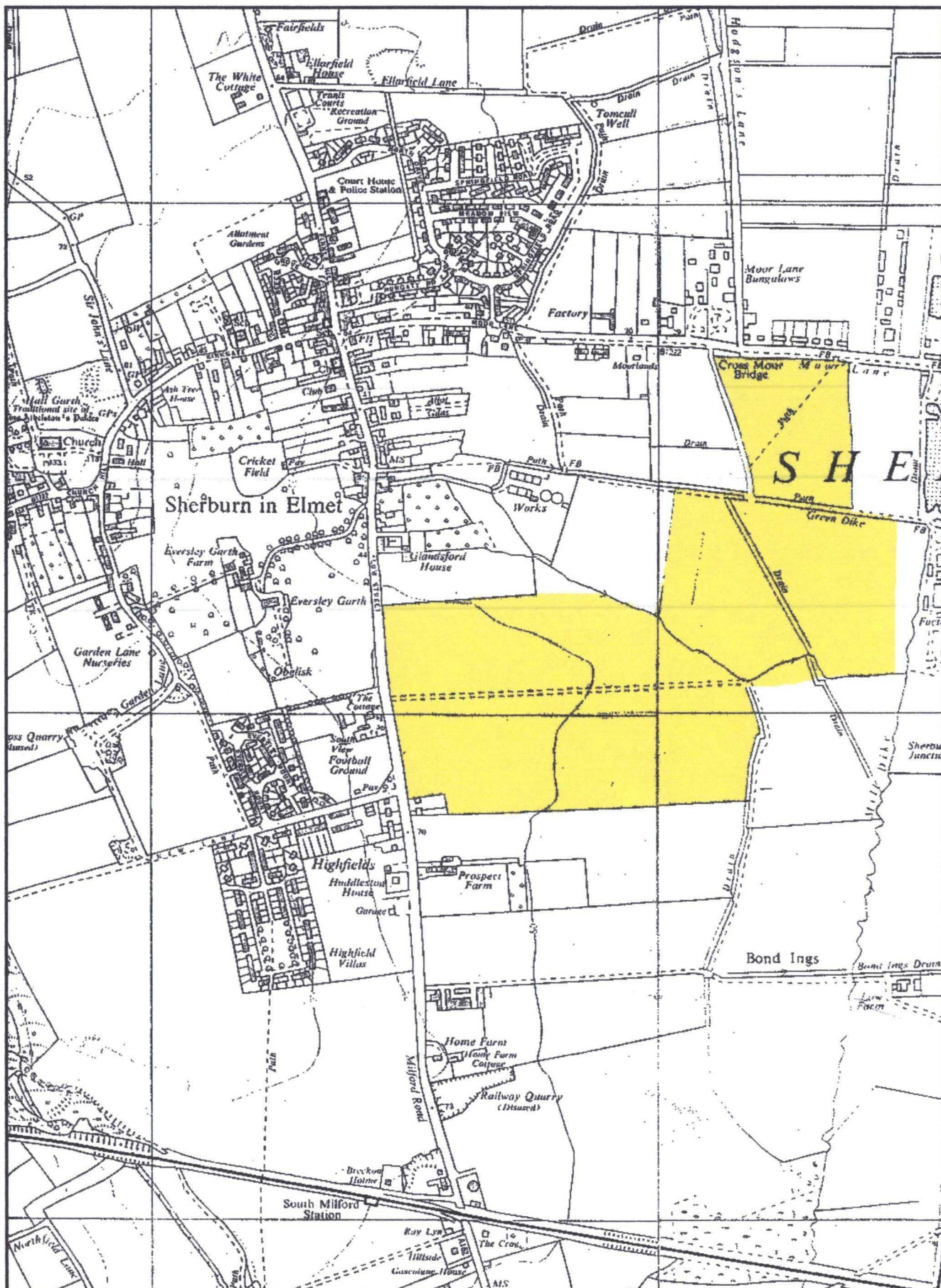


Figure 13. Land divisions, c. 1967. Ordnance Survey 1:10560 Map.



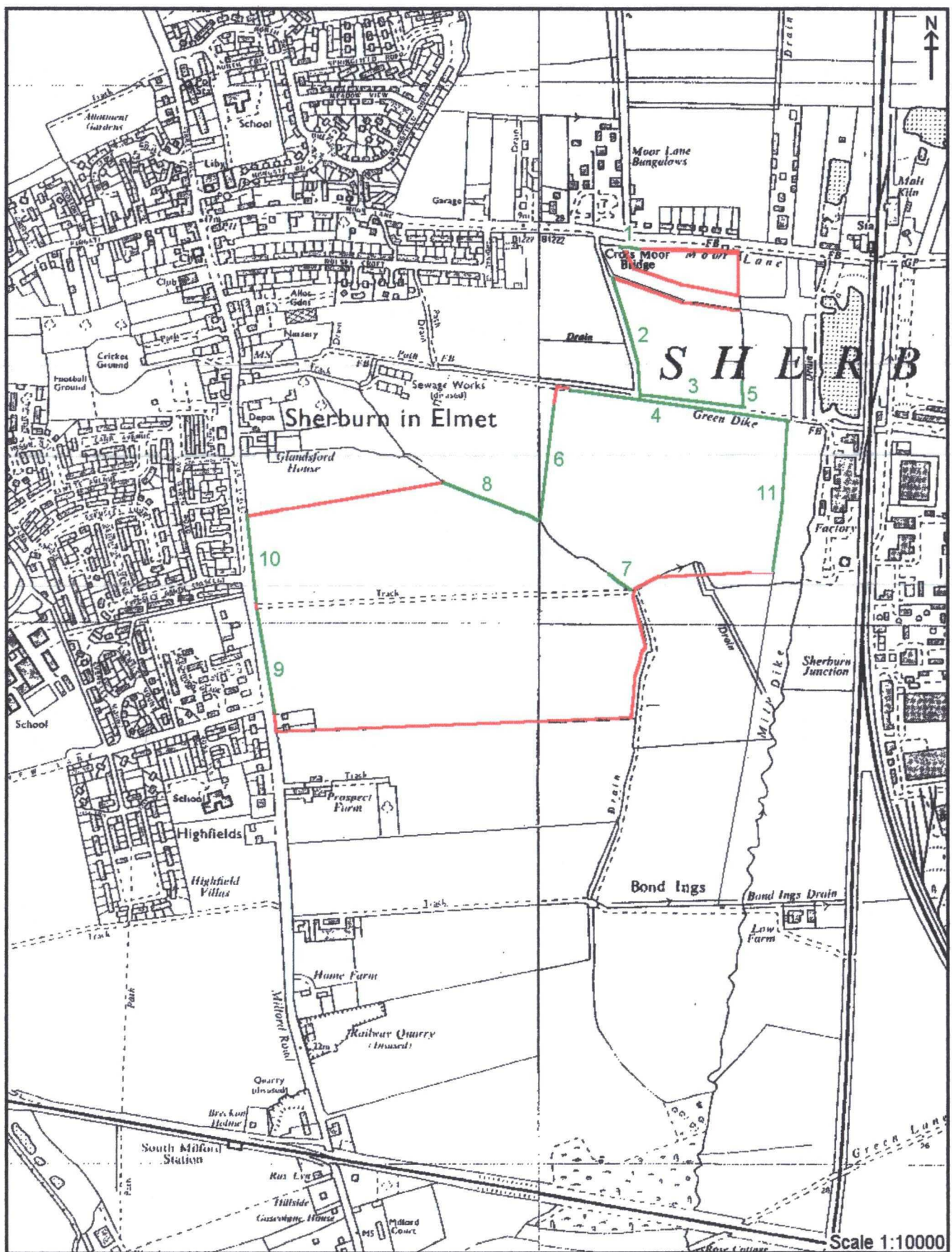


Figure 14. Hedge survey location plan.



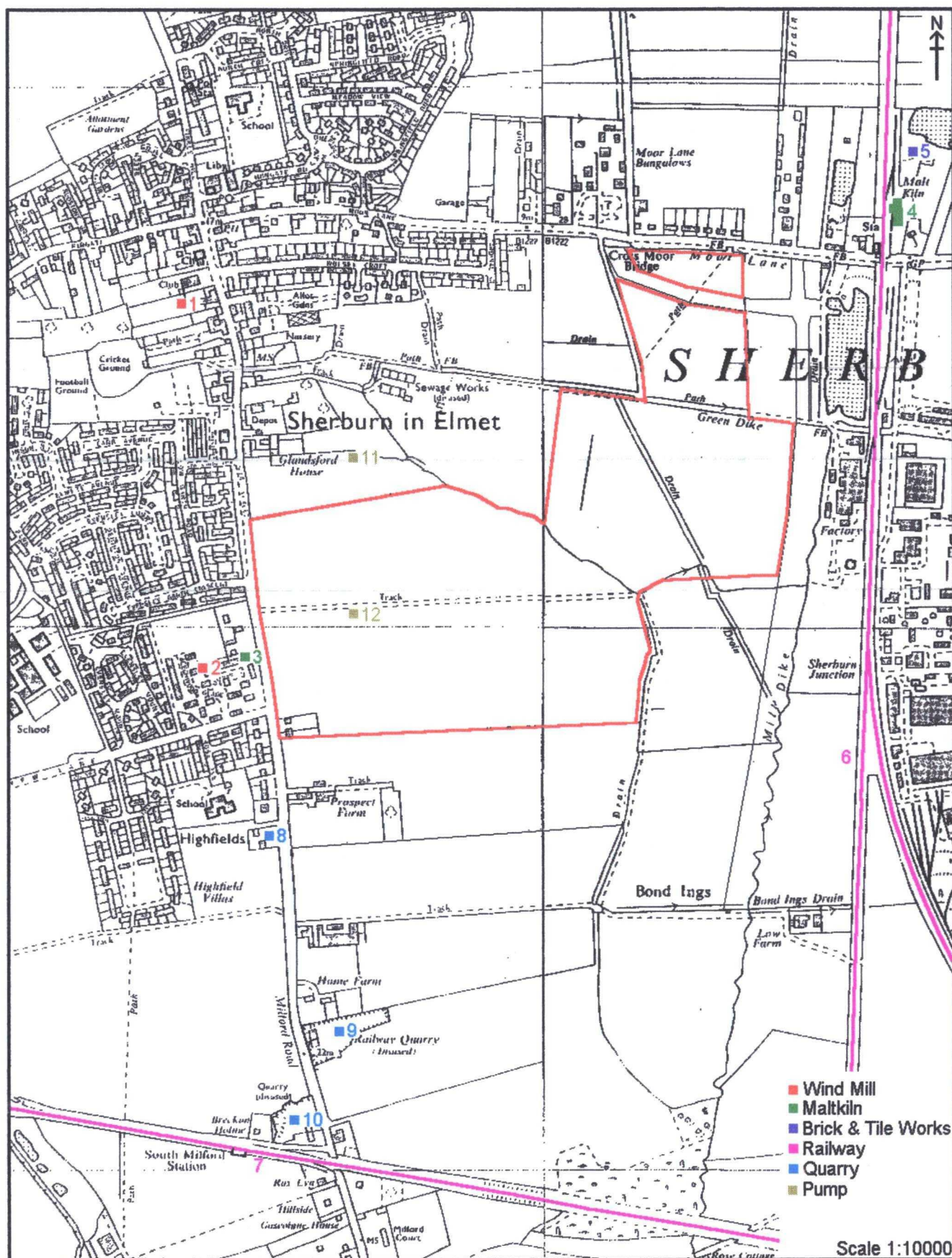


Figure 15. Industrial sites.



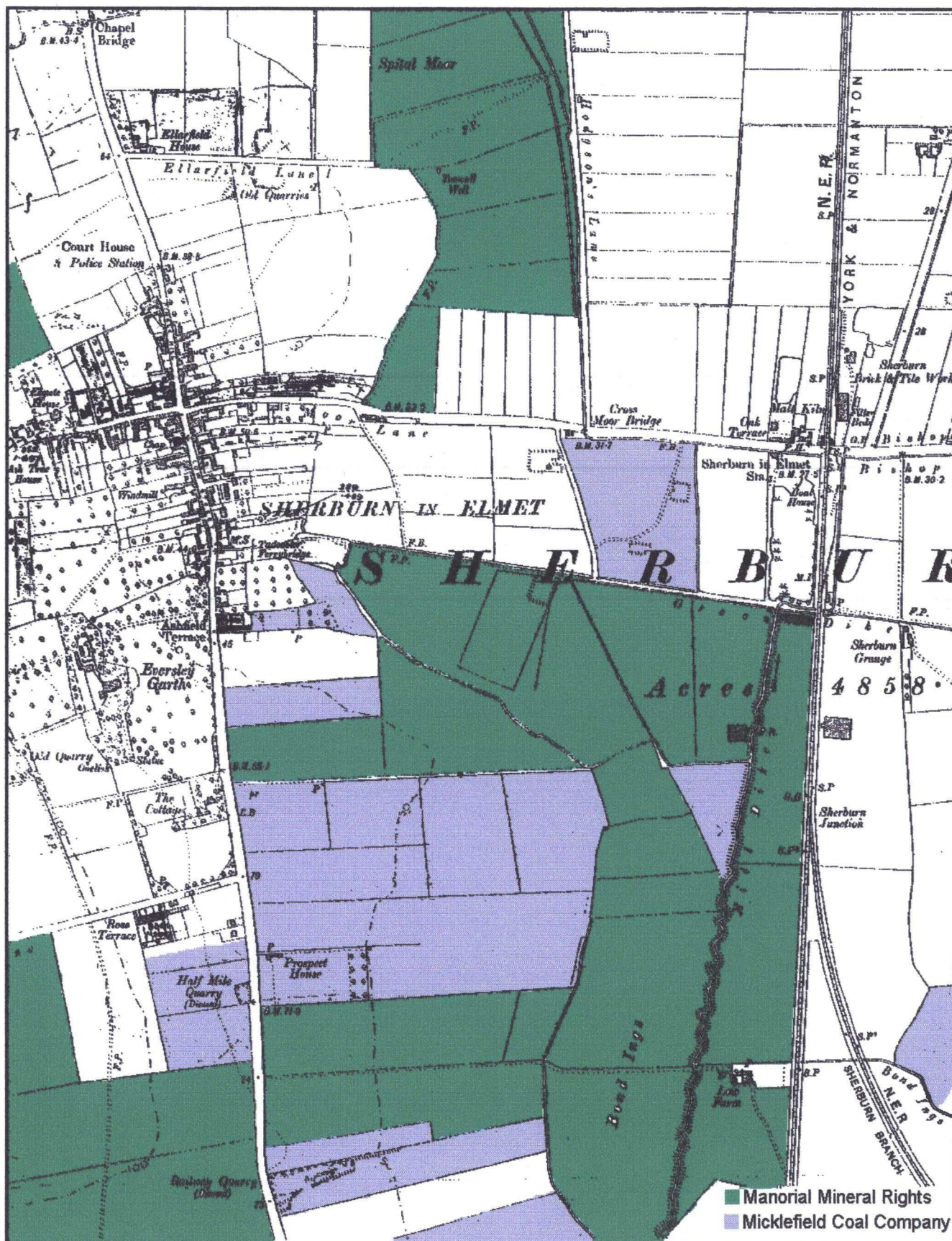


Figure 16. Mineral Rights - Coal (c. 1937).









Plate 1.  
General view of Areas A, B and D. Facing west.



Plate 2.  
Genral view of Area C. Facing east.





**Plate 3.**  
**General view of Area D. Facing south-east.**



**Plate 4**  
**General view of Area E. Facing south-west.**





Plate 5  
View of Bishops Dike. Facing east.



Plate 6.  
View of dike separating Areas B and D. Facing east.



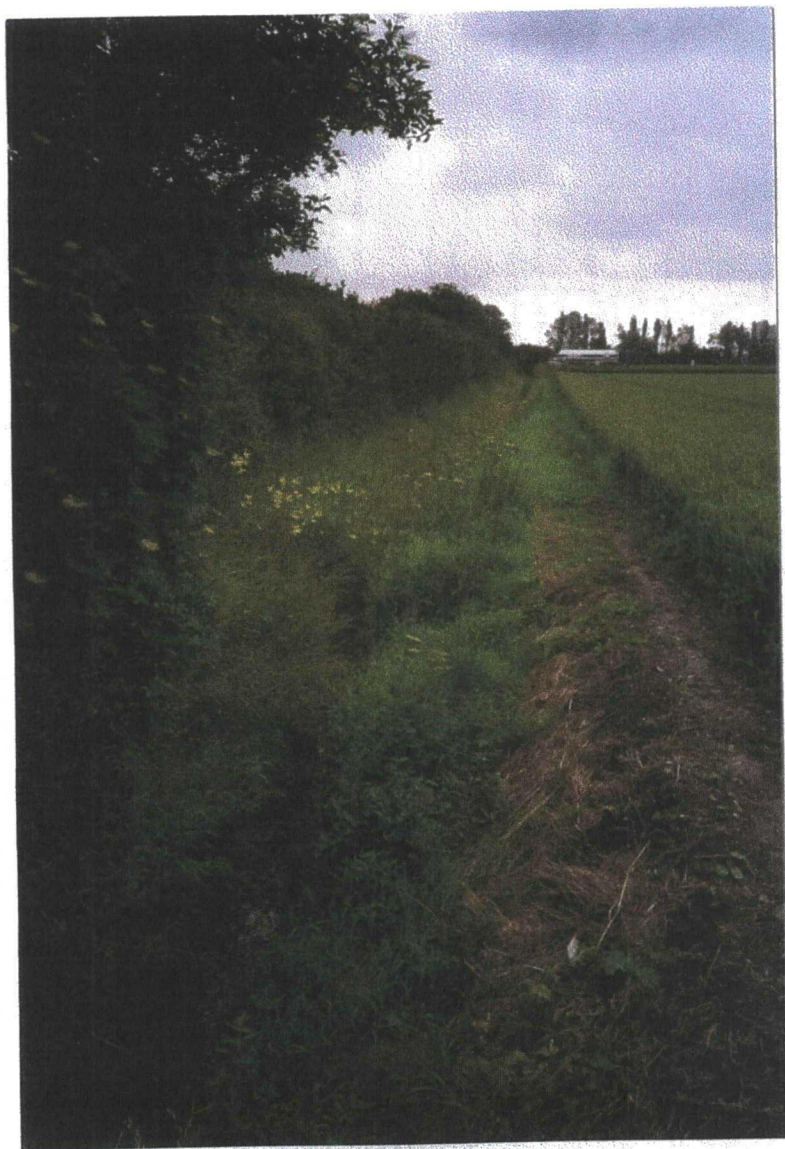


Plate 7.  
View of Green Dike. Facing east.



Plate 8.  
View of modern dike running into Mill Dike. Facing east.