

Figure 1: Location of road improvements

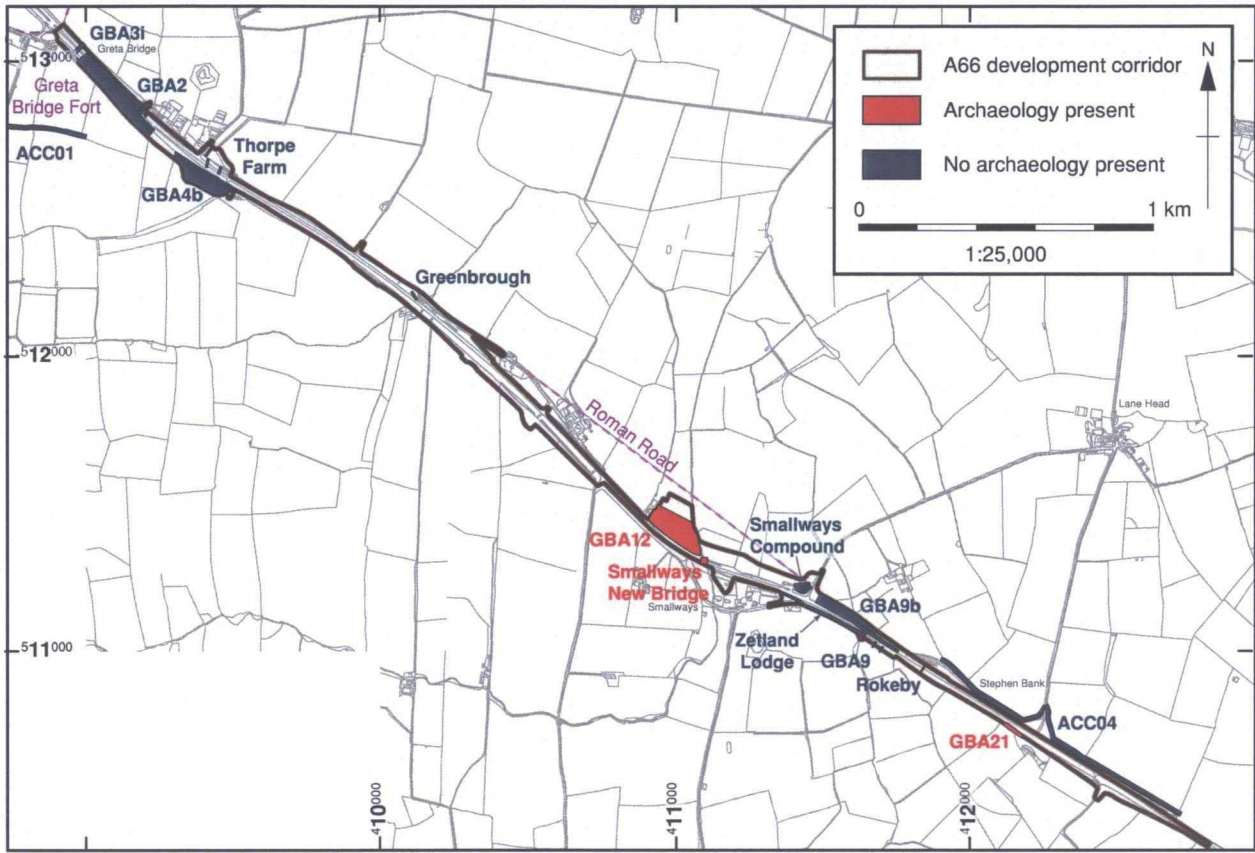


Figure 2: A66 development route (north), Greta Bridge to Stephen Bank

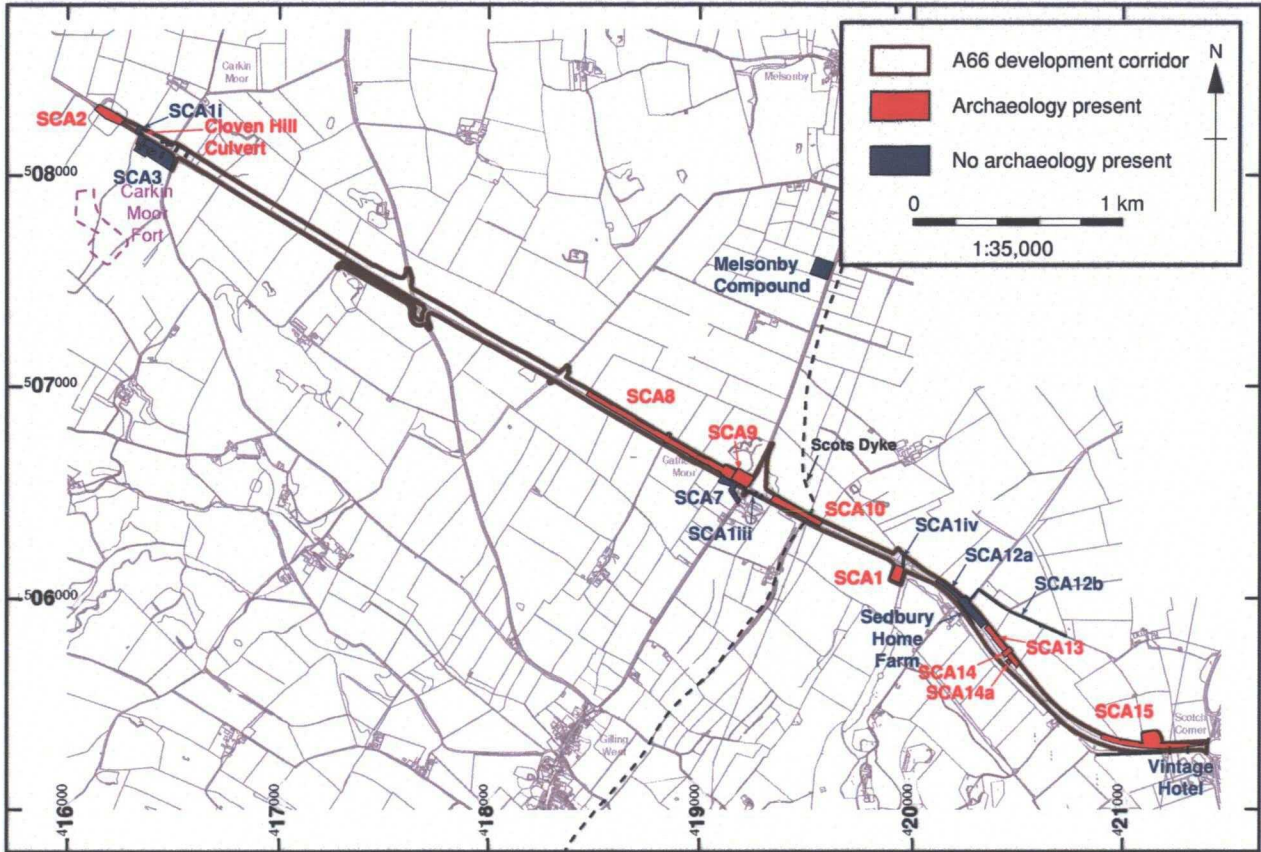


Figure 3: A66 development route (south), between Carkin Moor and Scotch Corner



Figure 4: Geological map of the study area

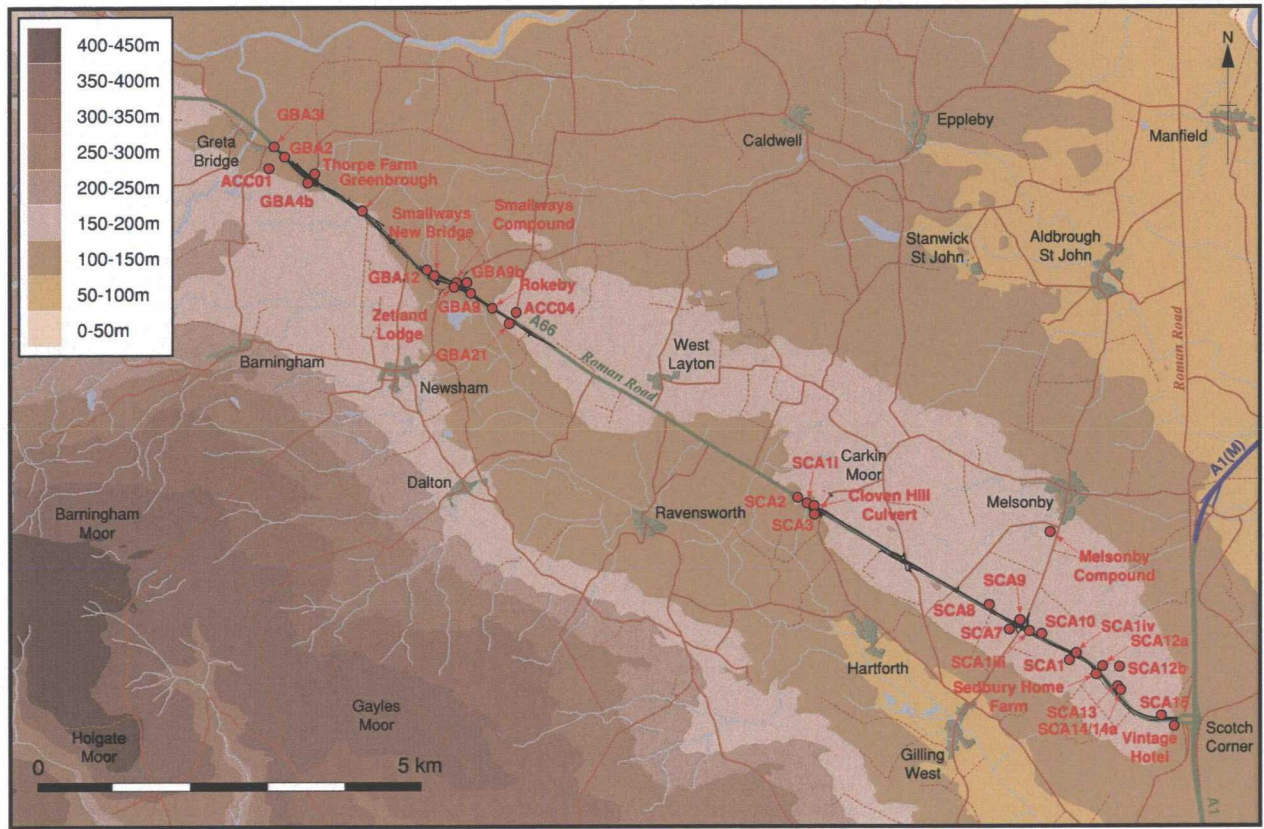


Figure 5: Location of all sites investigated

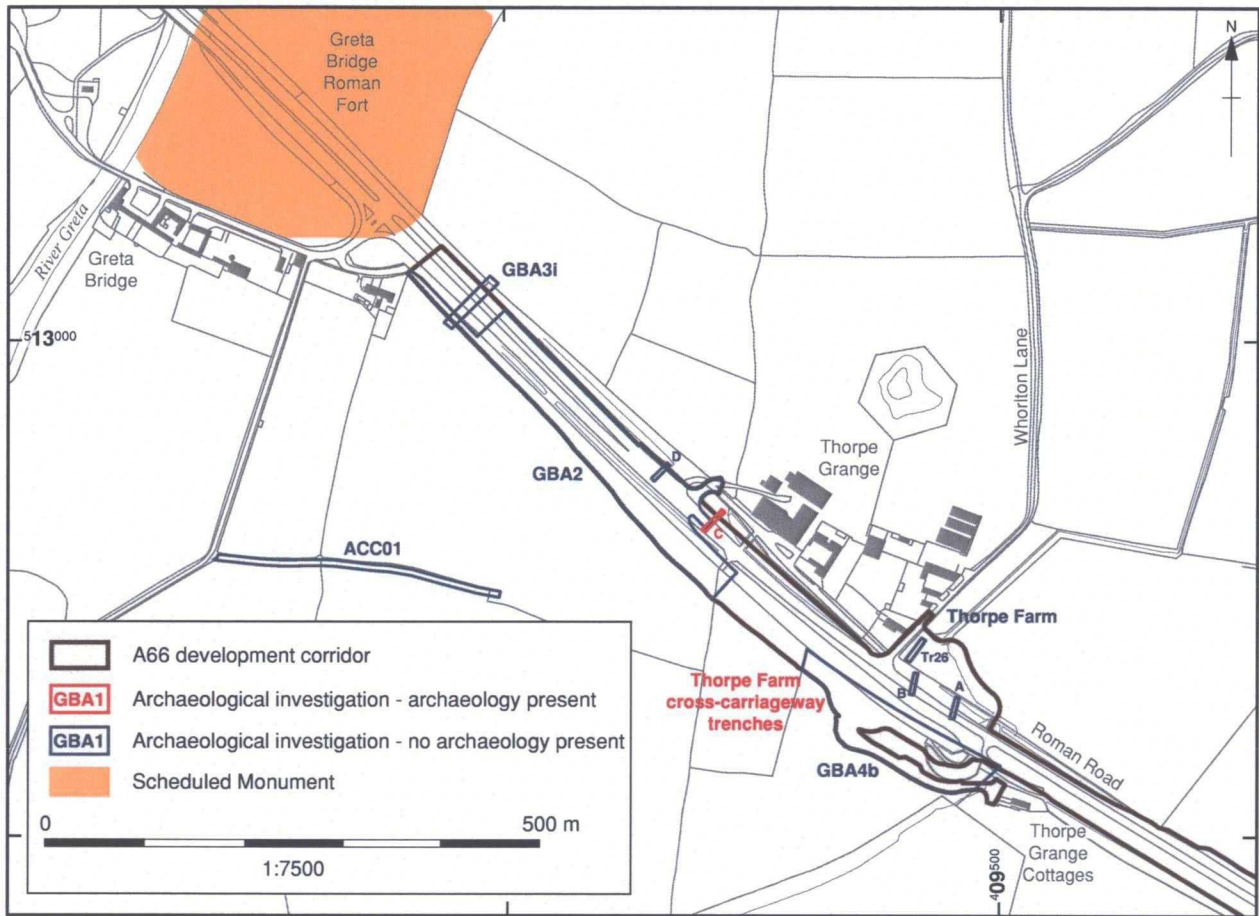


Figure 6: Site locations, Greta Bridge to Thorpe Farm

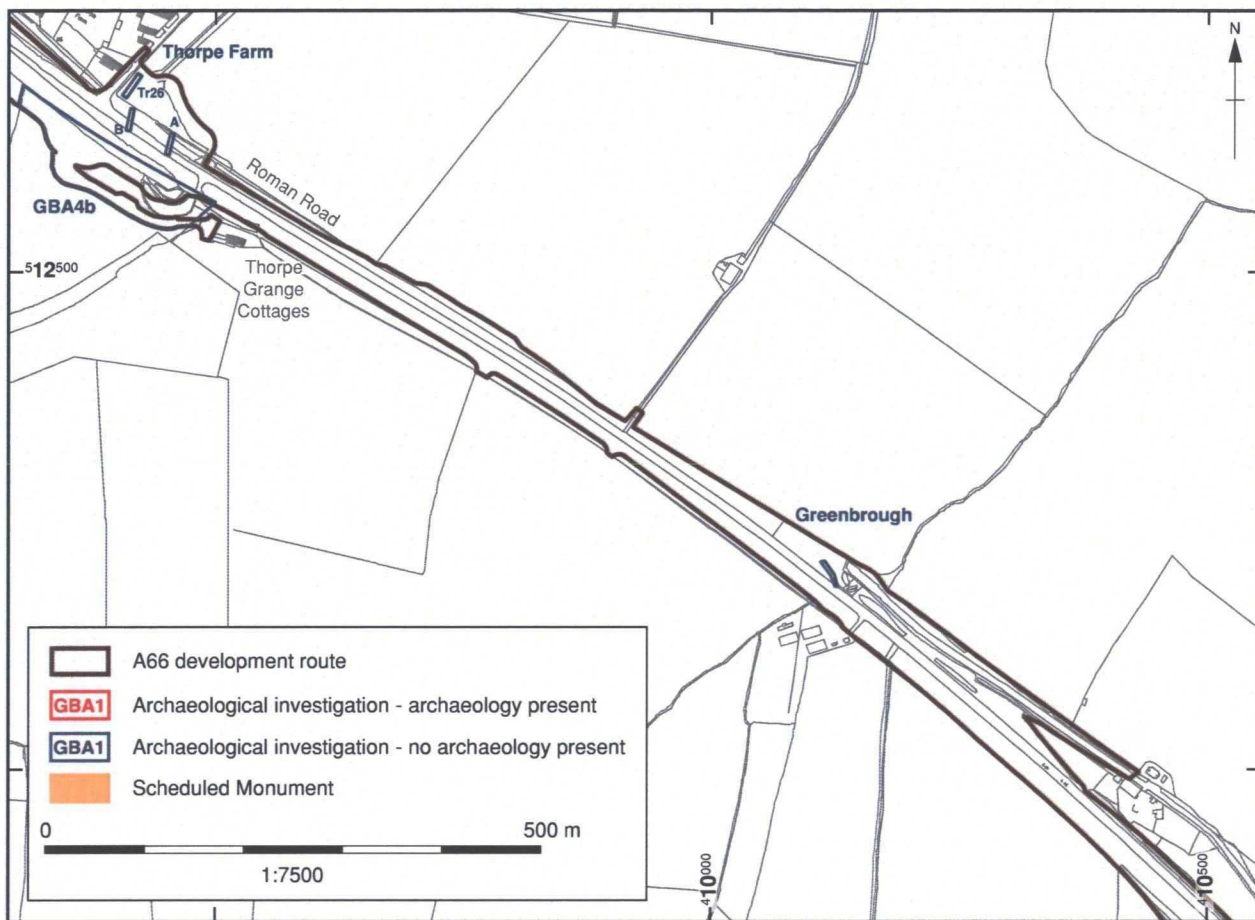


Figure 7: Site locations, Thorpe Farm to Greenbrough

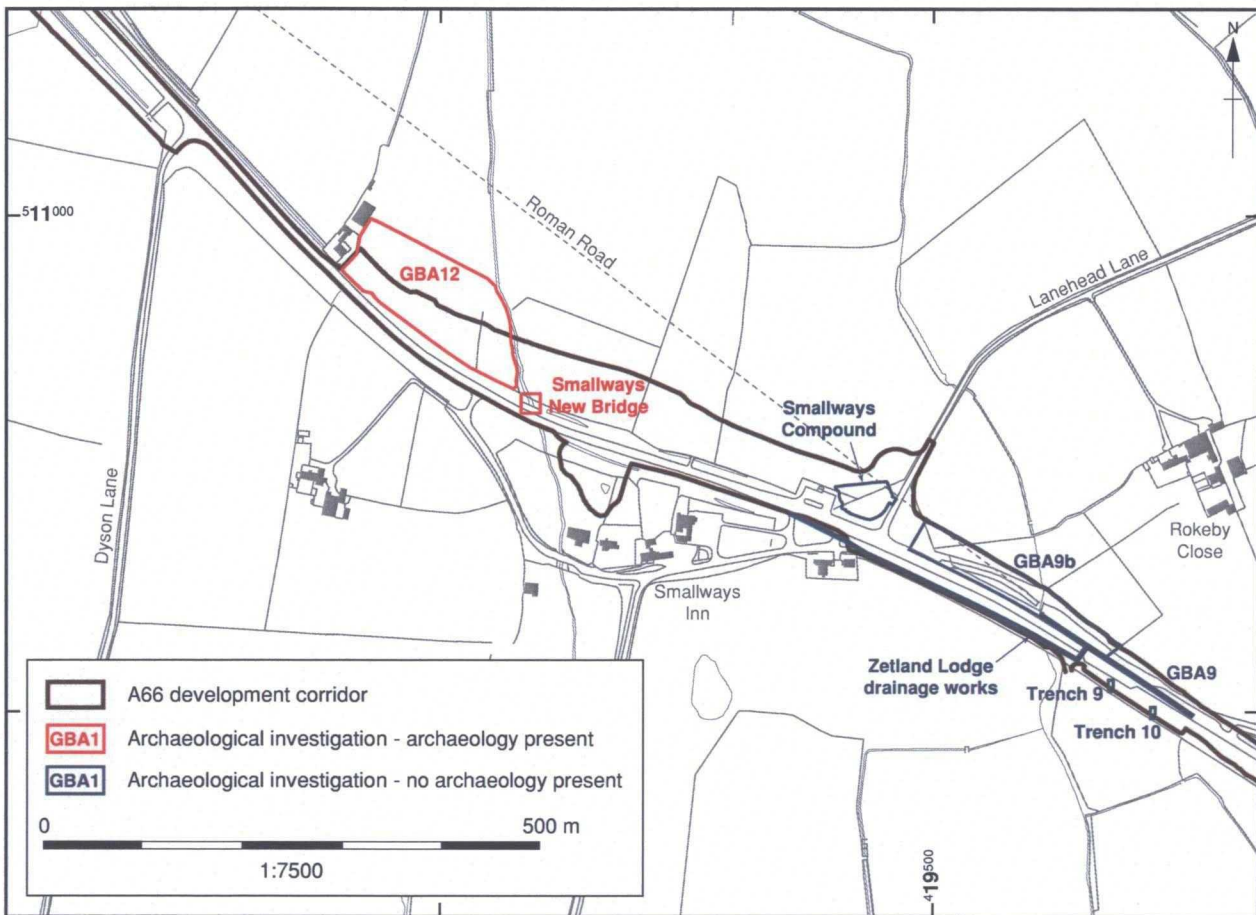


Figure 8: Site locations, Smallways Inn/Zetland Lodge area



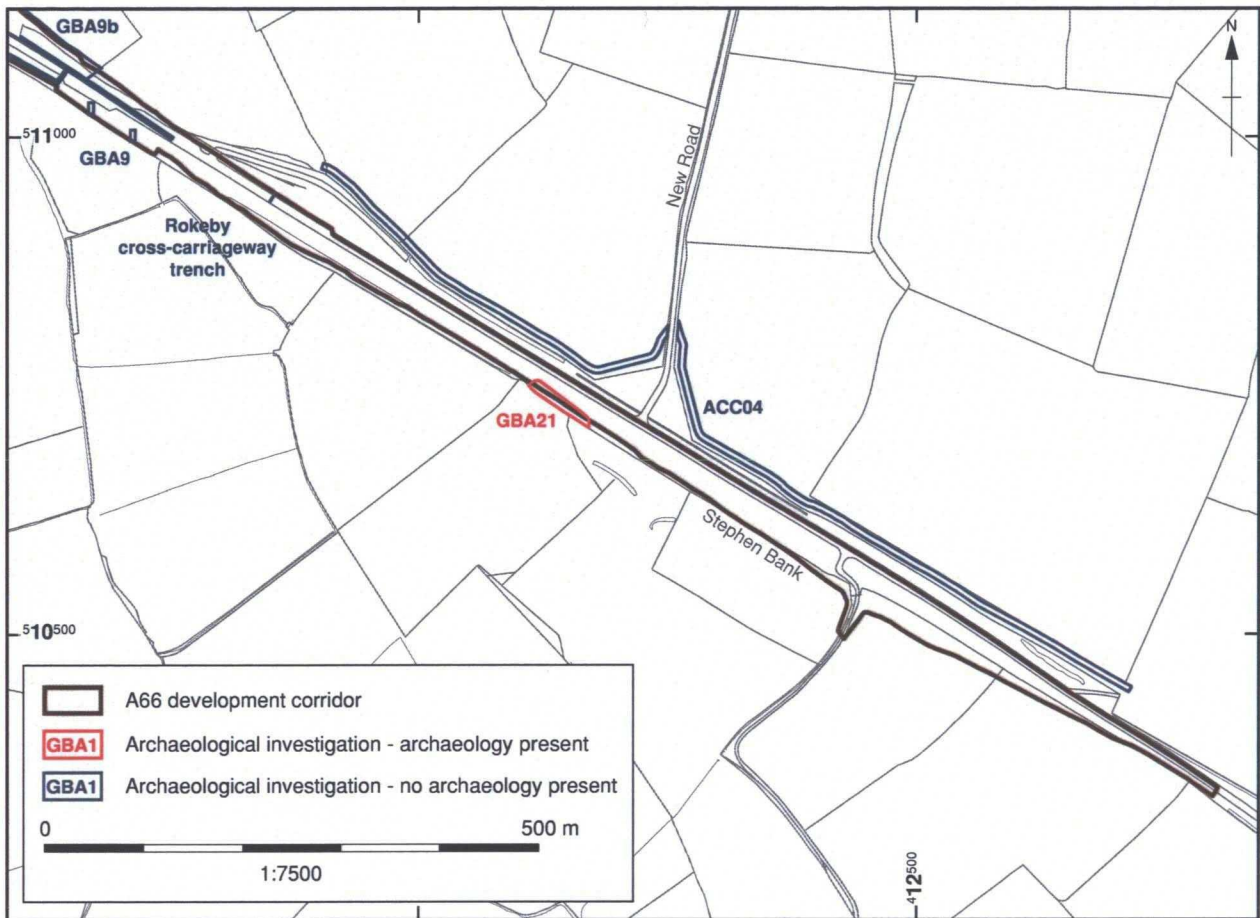


Figure 9: Site locations, Rokeby to Stephen Bank

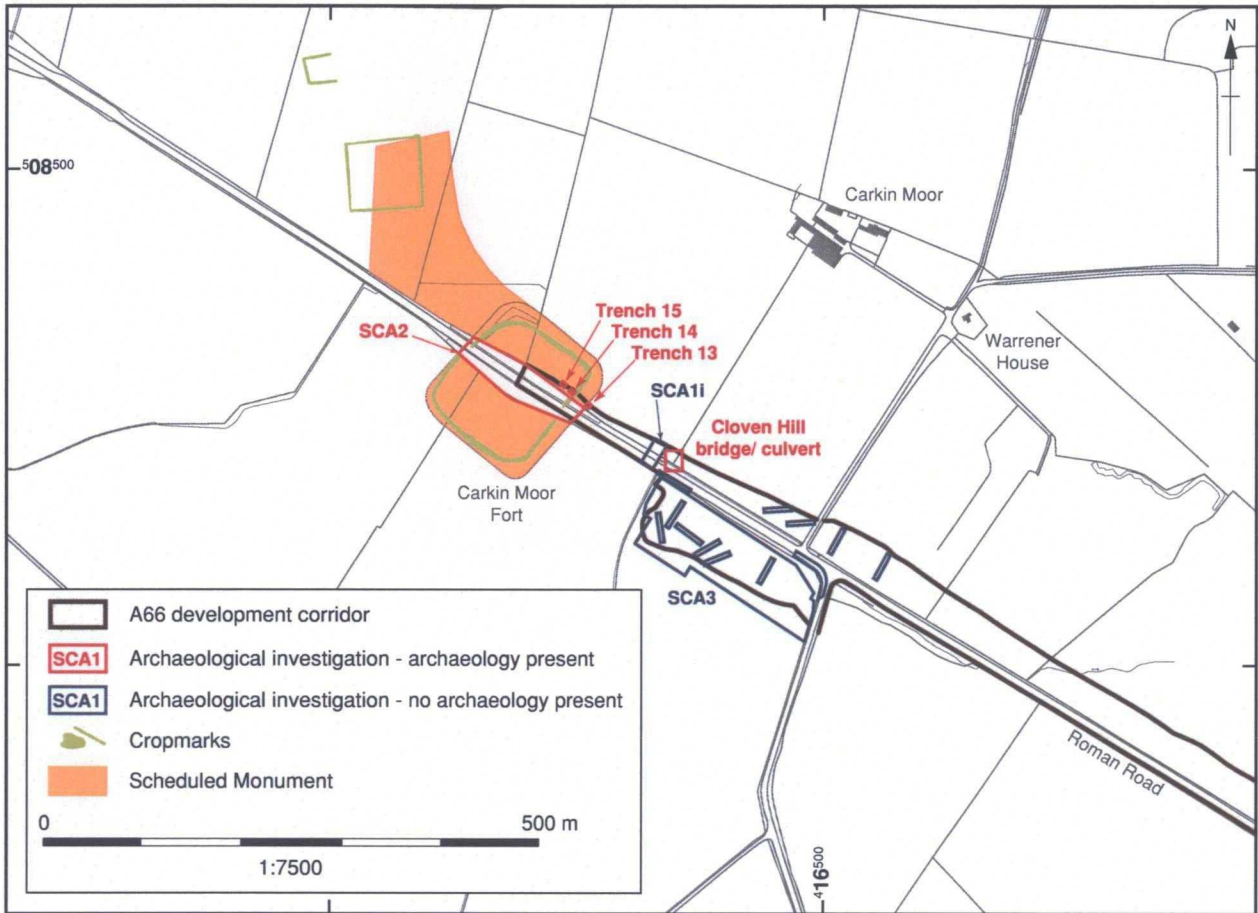


Figure 10: Site locations, Carkin Moor area

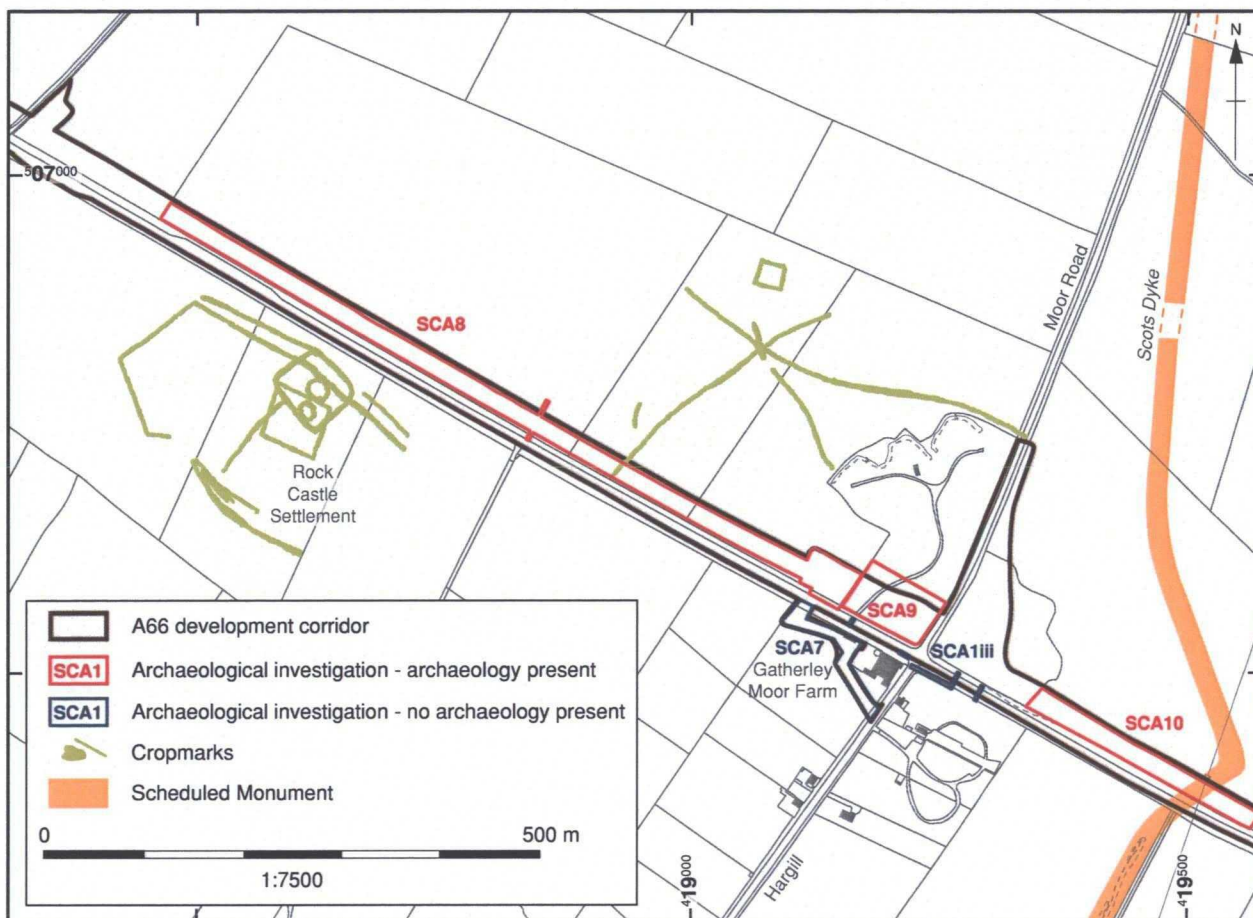


Figure 11: Site locations, Gatherley Moor area

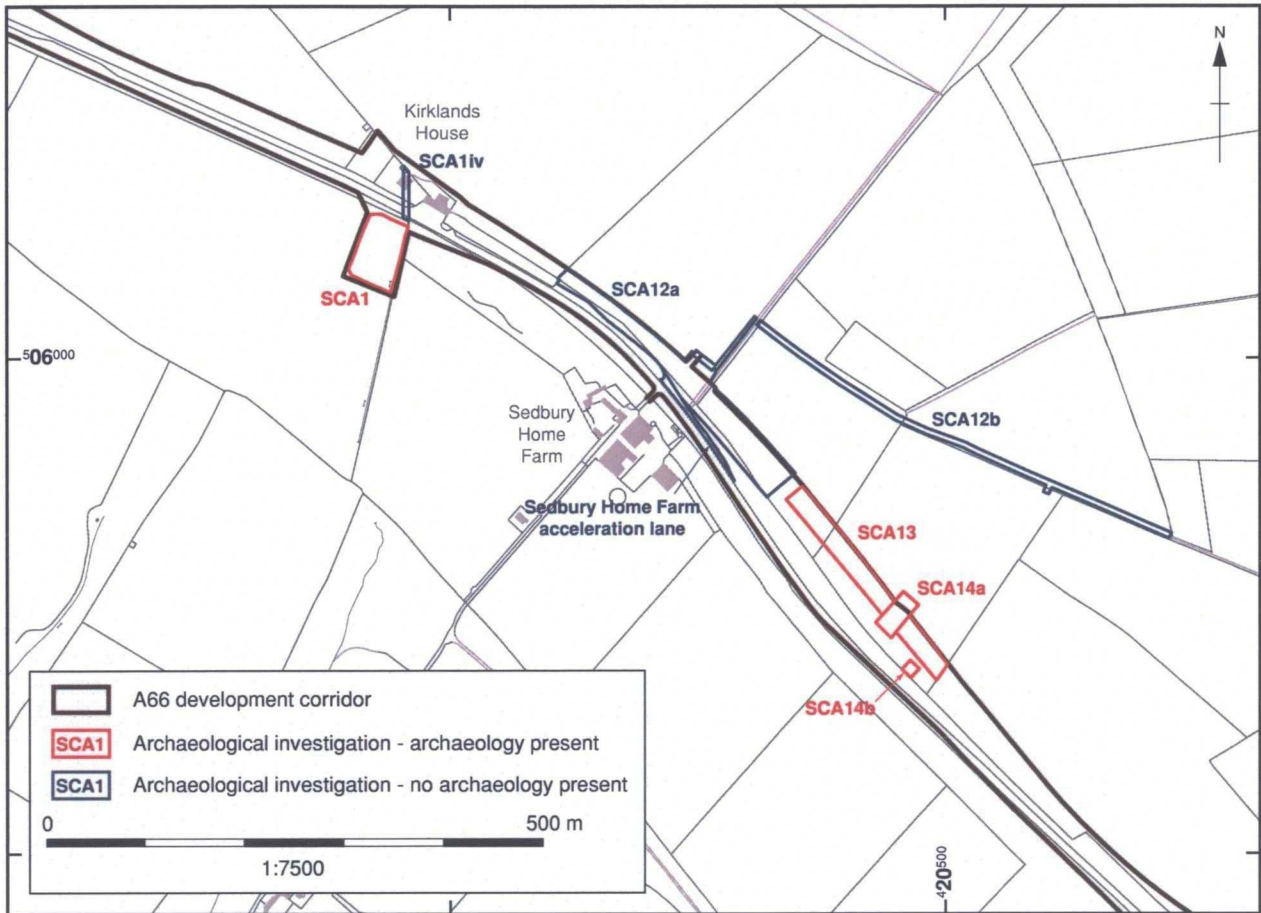


Figure 12: Site locations, Kirklands House and Sedbury Home Farm area

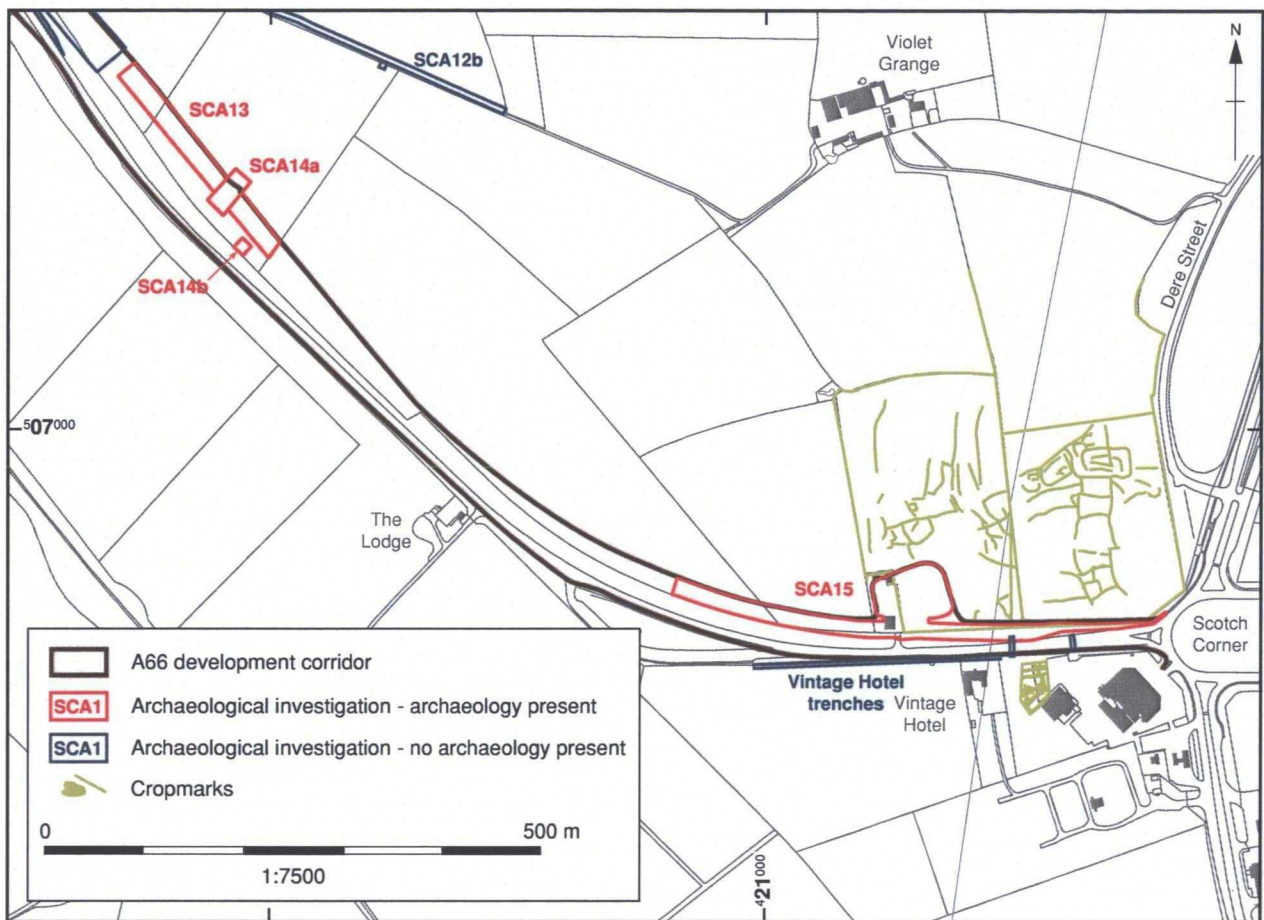


Figure 13: Site locations, Scotch Corner area

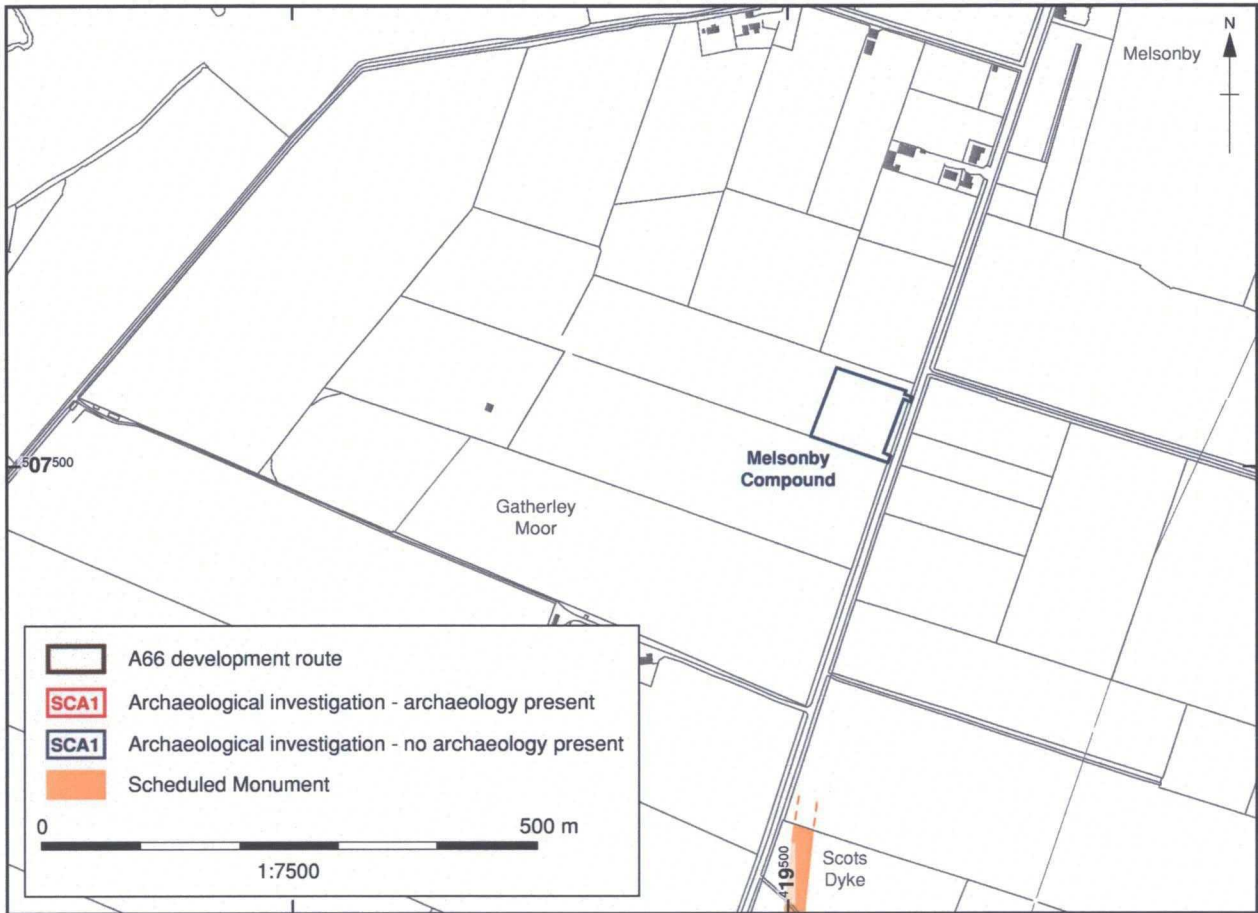


Figure 14: Site location, Melsonby Compound

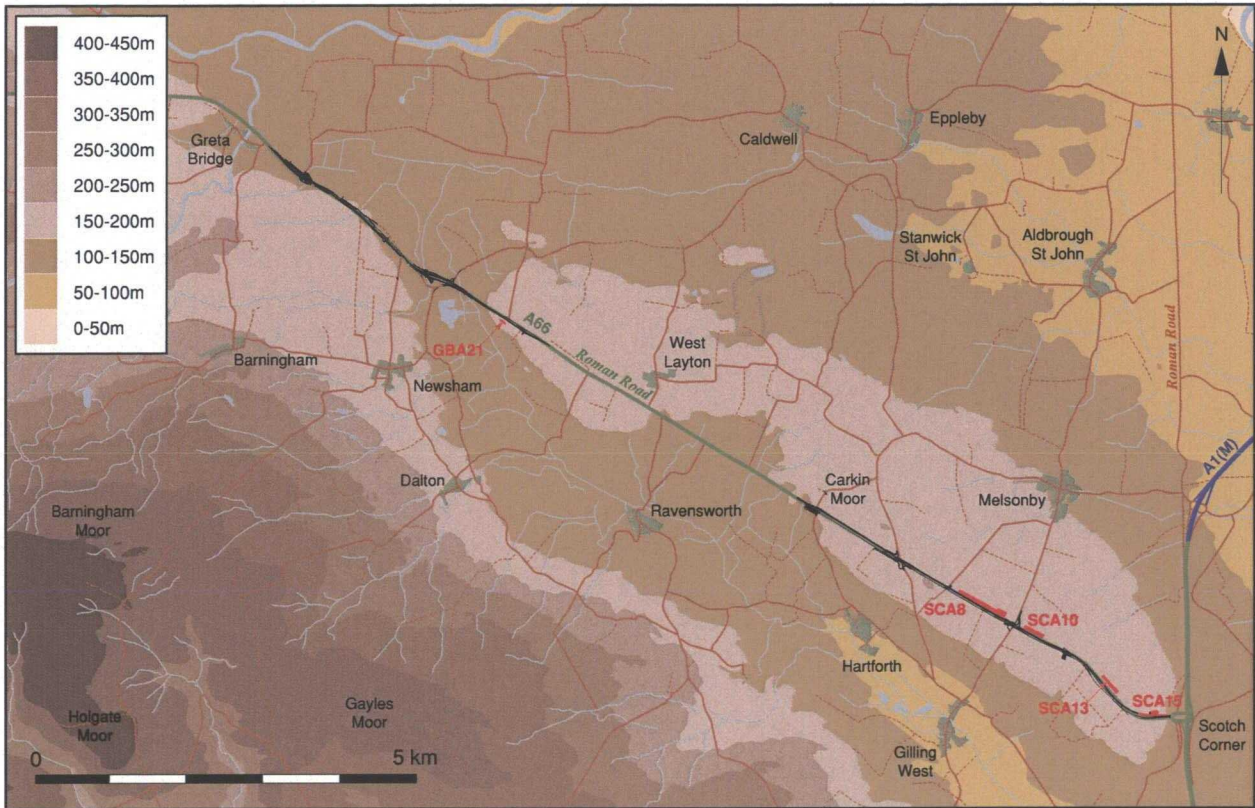


Figure 15: Location of early prehistoric sites

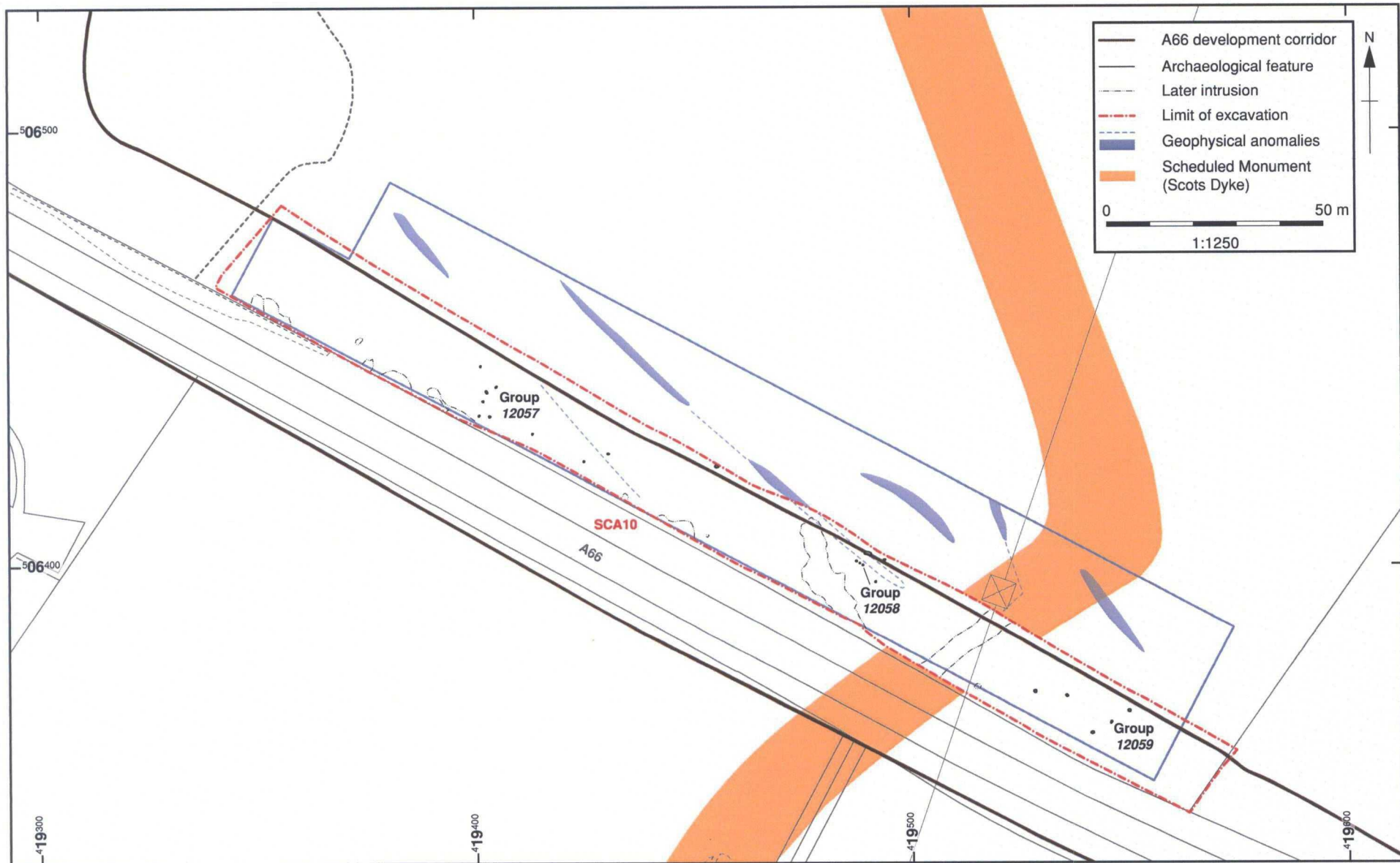


Figure 16: SCA10: location of feature groups 12057, 12058 and 12059



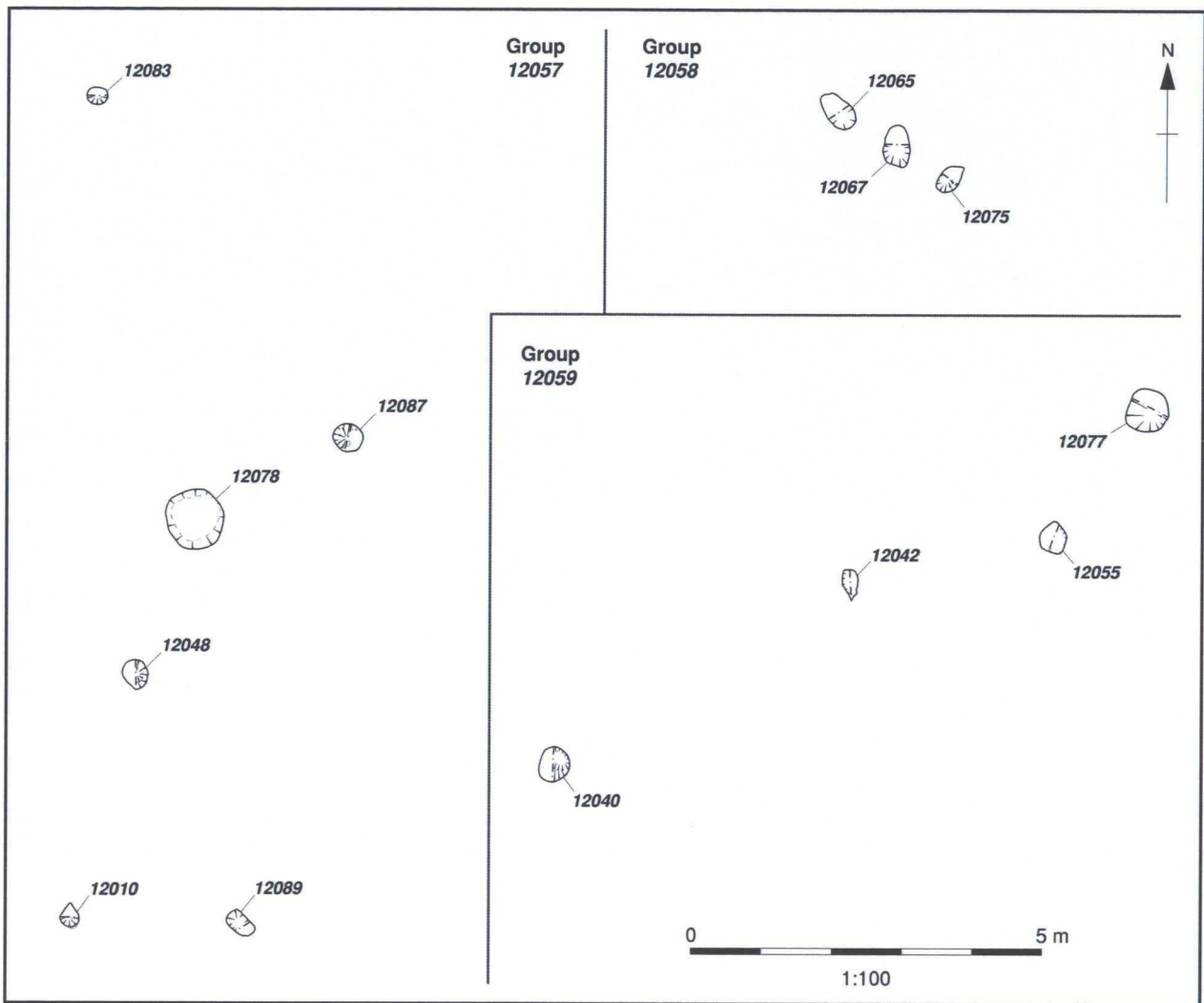


Figure 17: SCA10: detail of feature groups 12057, 12058 and 12059

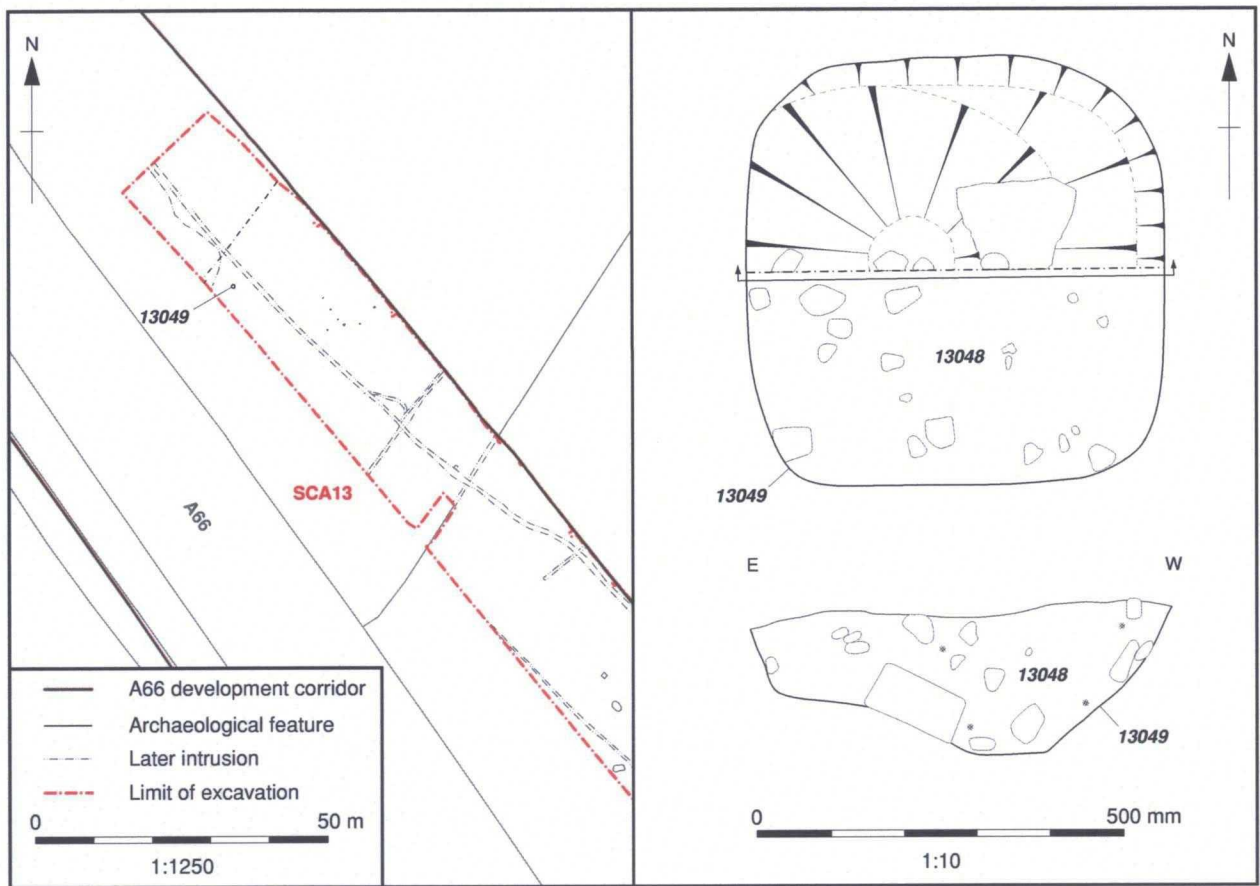


Figure 18: SCA13: location, plan and section of early Bronze Age pit 13049

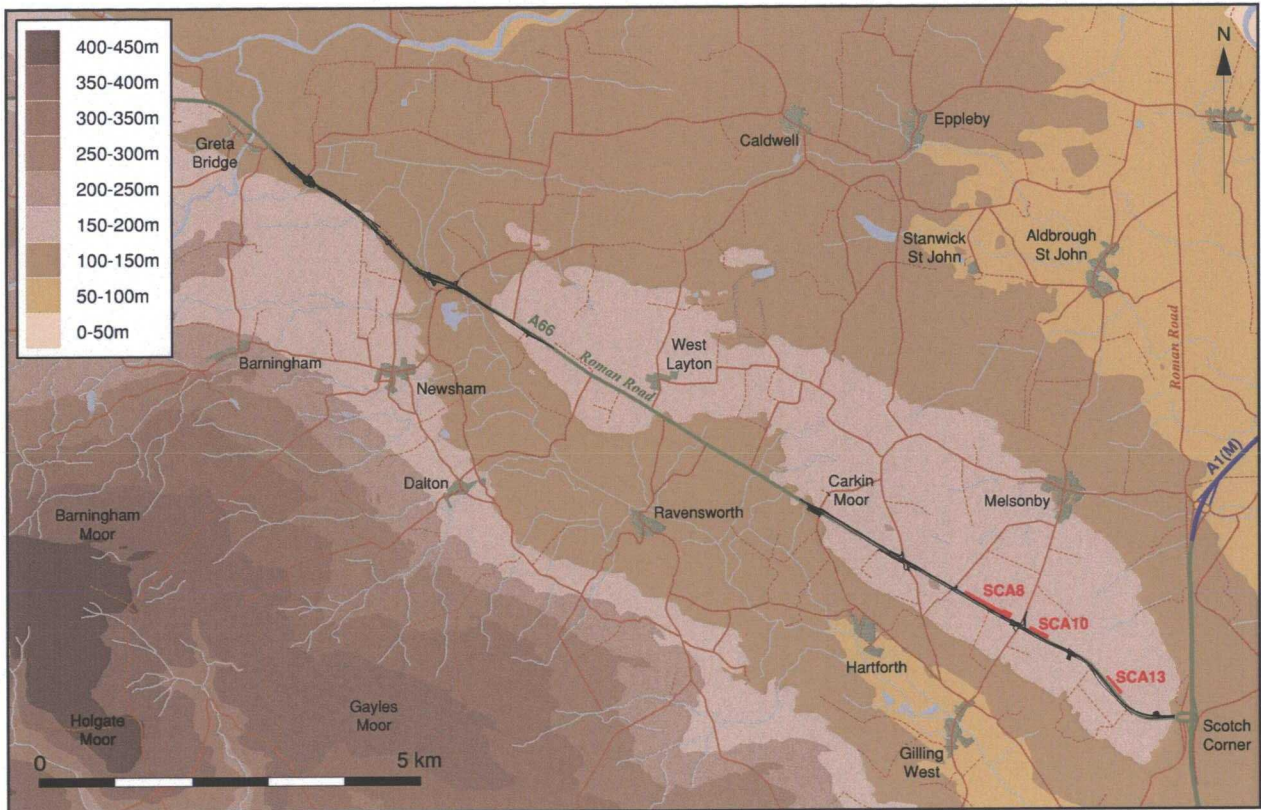


Figure 19: Location of Iron Age sites

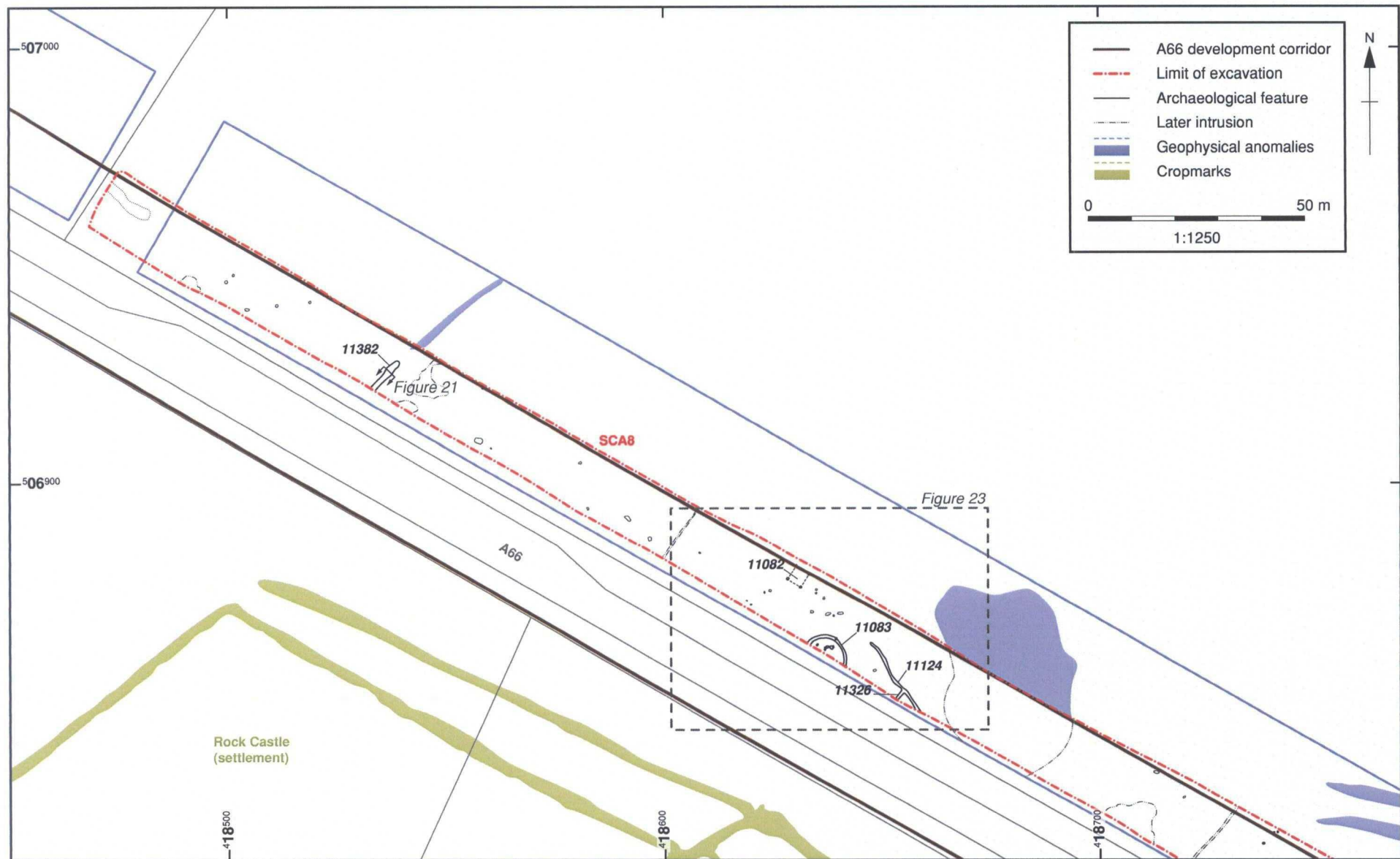


Figure 20: SCA8: location of Iron Age features in the western part of the site

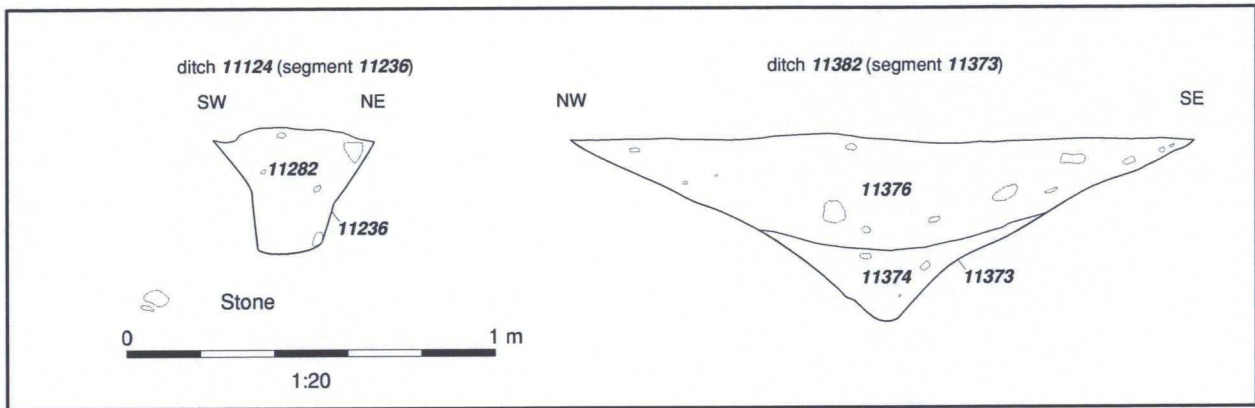


Figure 21: SCA8: sections of ditches 11124 and 11382

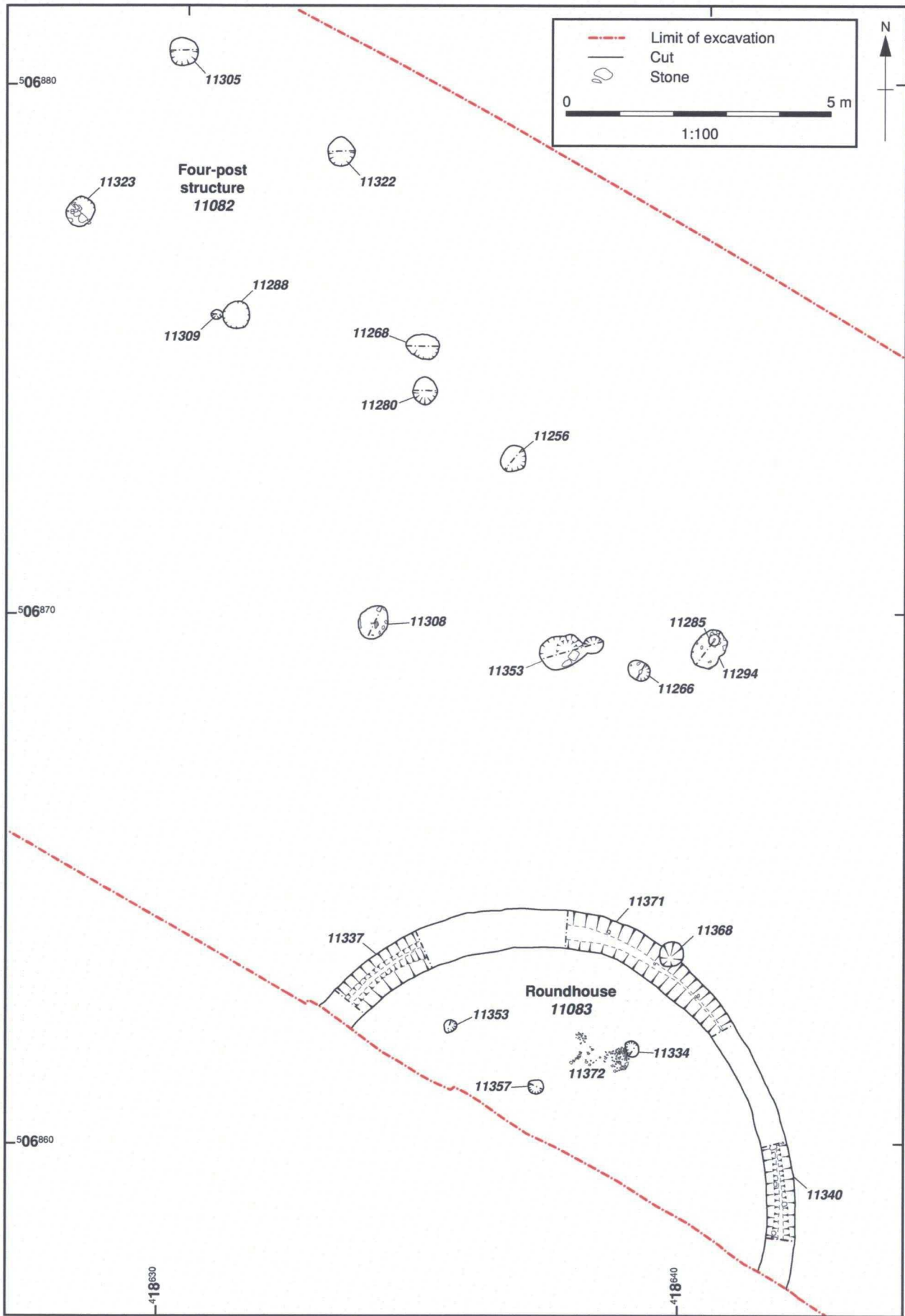


Figure 22: SCA8: roundhouse 11083 and four-post structure 11082

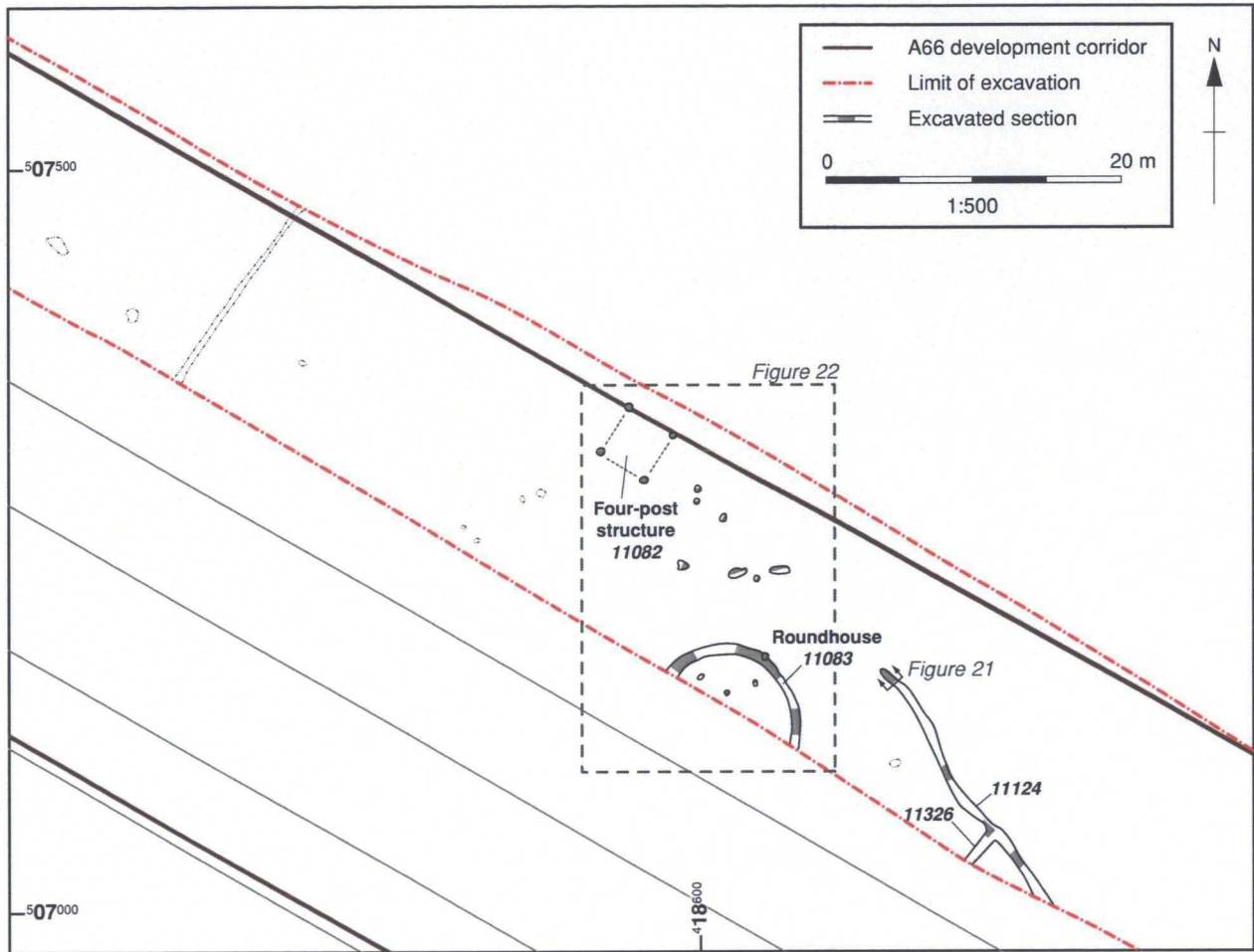


Figure 23: SCA8: Iron Age features in the central-western part of the site

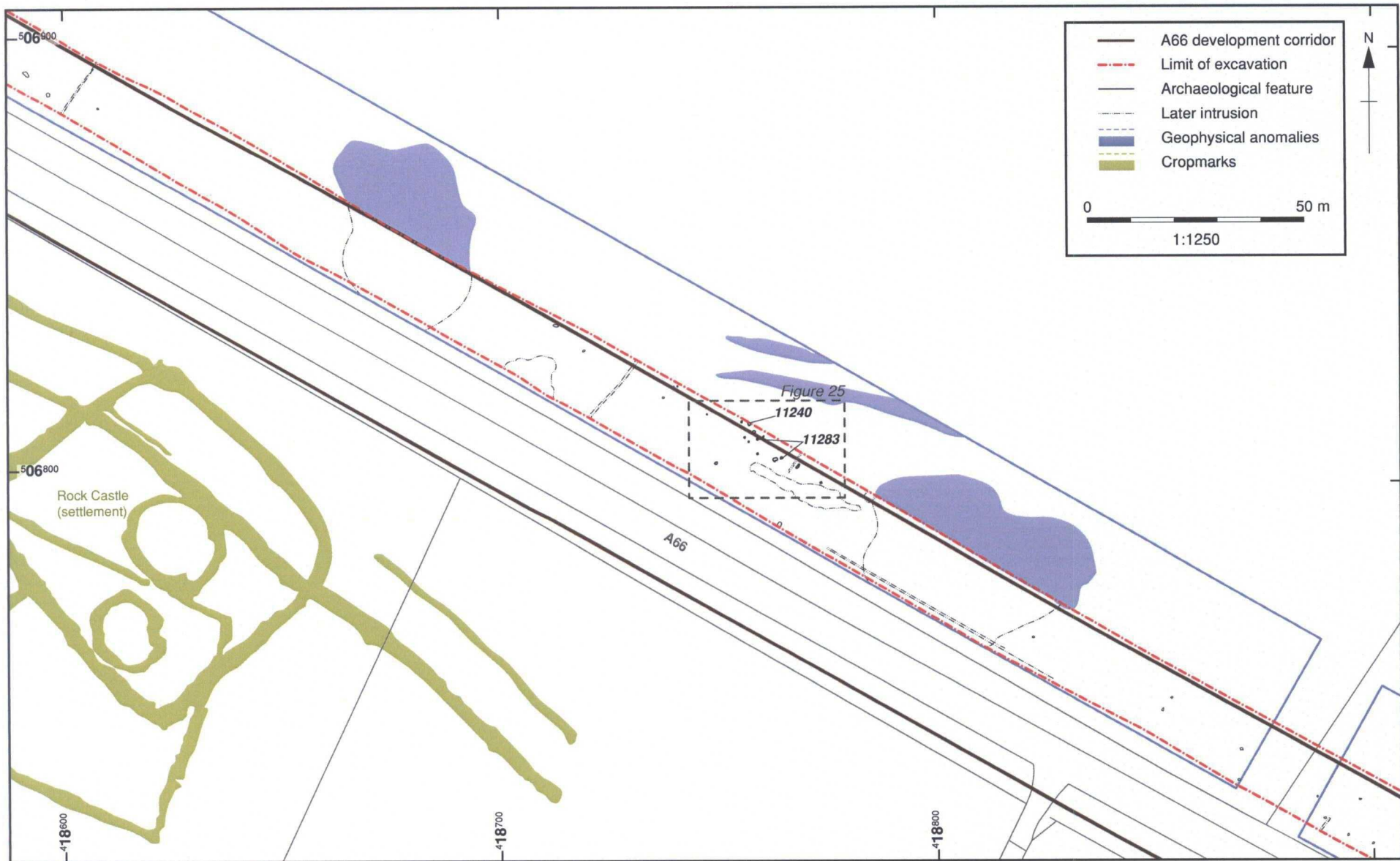


Figure 24: SCA8: location of Iron Age features in the central-eastern part of the site



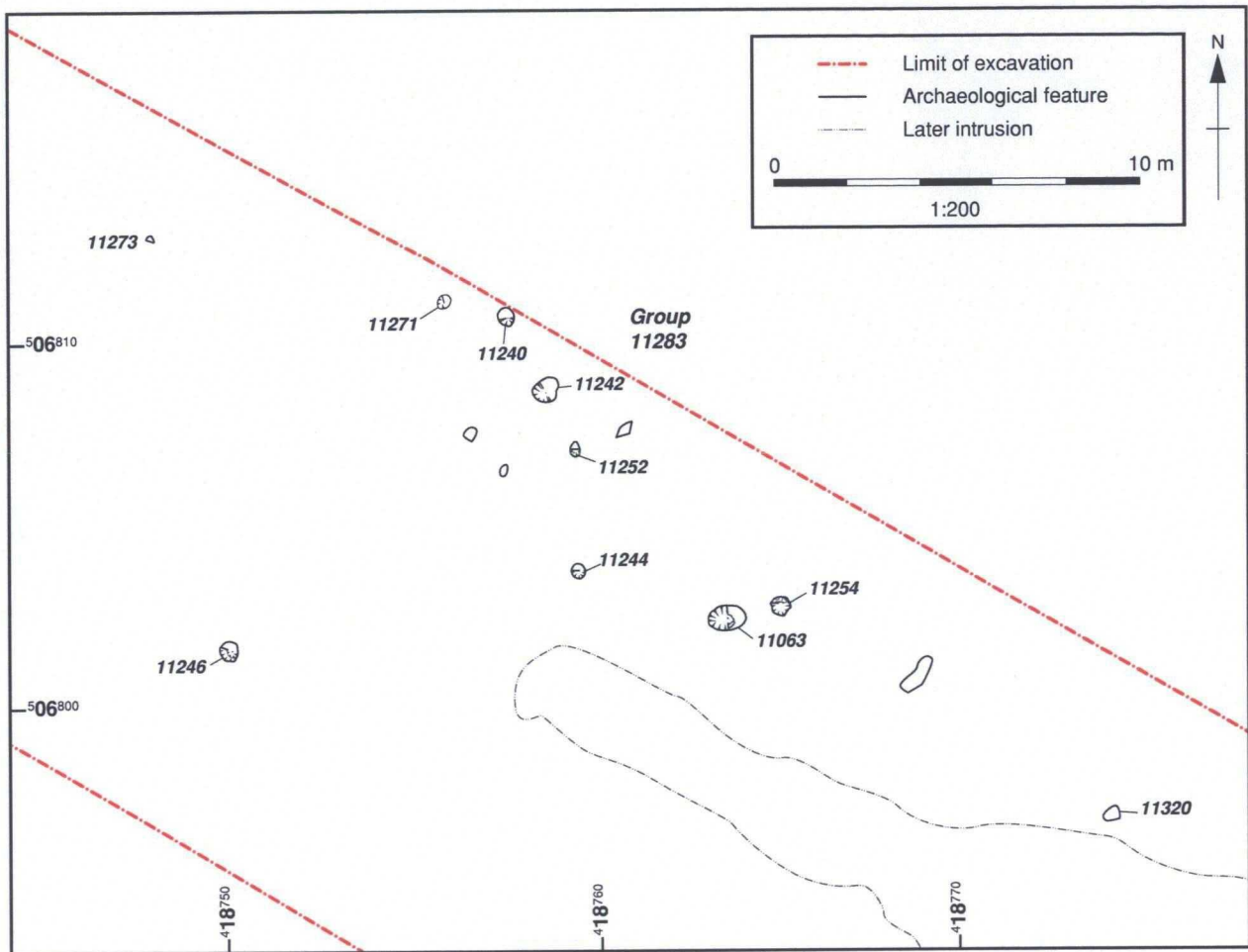


Figure 25: SCA8: potential Iron Age features in the central-eastern part of the site (feature group 11283)