

SELBY ABBEY CHURCH OF ENGLAND PRIMARY SCHOOL

SELBY, NORTH YORKSHIRE

PHOTOGRAPHIC BUILDING SURVEY



JB Archaeological Services

On behalf of

Jacobs

September 2013

John Buglass Archaeological Services
Rosebank
Newby Wiske
North Yorkshire
DL7 9EX

01609 773764
07903 867 160

johnbuglass@yahoo.com
www.jbasarchaeology.co.uk

Contents

	<i>Summary</i>	
1.0	Introduction	2
2.0	Background	2
	Historical Background	
	Topography and Land Use	
3.0	Aims and Objectives	3
4.0	Methodology	3
5.0	Results	3
	1858 National School	5
	School Masters House	5
	School Mistresses House	8
	Main School Building	13
	1897 Harper Memorial	15
	1890-1900 Additions	16
	1933-4 Senior School	18
	1927 Infant School	20
	Setting	23
6.0	Discussion and Conclusion	25
	References	25
	Acknowledgments	25
	Appendix I Digital Photograph Catalogue	26
	Appendix II Black and White Photograph Catalogue	31

Illustrations

Front Cover: School Masters House

Figures

Figure 1 Site Location

Figure 2 Plan showing the site lay out

Figure 3 Selby Abbey School Masters House showing number & direction of photographs

Figure 4 Selby Abbey Infant School showing number & direction of photographs

Figure 5 Selby Abbey School Mistresses House showing number & direction of photographs

Figure 6 Selby Abbey School Senior Classrooms showing number & direction of photographs

Figure 7 Selby Abbey National School showing number & direction of photographs

Figure 8 Setting of Selby Abbey School showing number & direction of photographs

Plates

- Plate 1. Part of the School Masters House of the 1858 National School showing original construction materials, looking north-east, looking NE
- Plate 2. Interior of classroom in South Range with only modern features, looking ESE
- Plate 3. School Masters House, looking north-east
- Plate 4. Typical interior of administration room, looking north-east
- Plate 5. Blocked openings on the eastern side of the School Masters House
- Plate 6. School Masters House, looking north-west
- Plate 7. Exterior view of School Mistresses House, looking south-east
- Plate 8. Door in main bedroom with original lock and coat hook, looking south-west
- Plate 9. Original lock on main bedroom door, note decorative chamfer on door panels
- Plate 10. Possible original coat hook on back of main bedroom door
- Plate 11. Detail of later window fittings. Lounge window, looking WNW
- Plate 12. Detail of ?original window fitting. Dining room window, looking WNW
- Plate 13. Inside of back door to house, looking ESE
- Plate 14. Detail of the bottom of the stairs showing newel post and spindles
- Plate 15. Detail showing copper alloy connection plates for handrail of banisters
- Plate 16. Northern elevation of main school building, looking south-west
- Plate 17. Eastern elevation of main school building, looking north-west
- Plate 18. Southern elevation of main school building, looking north
- Plate 19. South range of the main school buildings, showing the glazed partition between the south and west Ranges
- Plate 20. Interior of Harper Memorial Hall, looking west
- Plate 21. Detail of dedication plaque at western end
- Plate 22. Northern addition to main building, looking south-west
- Plate 23. Eastern addition to main building, looking west
- Plate 24. Original cast iron radiator, looking south
- Plate 25. Moulded architrave in main hall
- Plate 26. Eastern elevation of the Seniors Classrooms, looking west
- Plate 27. Interior of classroom on eastern side of block, showing surviving wooden panelling, door and remains of built in cupboards
- Plate 28. Detail of an original built in wooden cupboard in one of the classrooms
- Plate 29. Southern elevation of the Infant School, looking north-east
- Plate 30. Typical classroom in the Infant School
- Plate 31. Internal glazing at eastern end of building
- Plate 32. Nos 46-72 New Land, Grade II Mid 19th century housing to the south-west of the school (Asset 13)
- Plate 33. 1866 Congregational Chapel to the north-west of the school (Asset 3)
- Plate 34. View towards senior classrooms with modern building on right hand side

SELBY ABBEY CHURCH OF ENGLAND PRIMARY SCHOOL

SELBY, NORTH YORKSHIRE

PHOTOGRAPHIC BUILDING SURVEY

Summary

As part of the planning process for the refurbishment and expansion of Selby Abbey Church of England Primary School a systematic photographic survey was undertaken of the school complex (Planning Ref. NY/2013/0075/FUL). The survey was undertaken to provide a visual record of the building as it existed before any alterations. The school lies near the centre of Selby 250m to the south-west of the abbey in Selby civil parish in Selby District (NGR SE 61380 32189).

It was not possible to complete a total photographic record of all aspects of all of the buildings due to both the presence of the pre-school club in part of one of the buildings and the small size of many of the rooms. The small size of some of the rooms prevented any meaningful images being taken. Overall the record made showed that much of the original and many of the early features of the interior of the school had been removed over the intervening 150 years since the schools original construction. Those features that survived included some window and door frames, cast iron radiators, wooden cupboards, and timber panelling.

SELBY ABBEY CHURCH OF ENGLAND PRIMARY SCHOOL

SELBY, NORTH YORKSHIRE

PHOTOGRAPHIC BUILDING SURVEY

1.0 INTRODUCTION

- 1.1 This report presents the results of a photographic survey on Selby Abbey Church of England Primary School, Selby, North Yorkshire. The survey was undertaken in order to fulfil one of the planning conditions which was to provide mitigation in the form of a visual record of the building, to a previously agreed written scheme of investigation, as it existed before any alterations were made (Planning Ref. NY/2013/0075/FUL). The school lies on the eastern side of New Lane near the centre of Selby and *c.*250m to the south-west of the abbey. The site is in Selby civil parish of Selby District (NGR SE 61380 32189) (Figures 1 & 2).
- 1.2 The survey was undertaken by JB Archaeological Services (JBAS) on behalf of Jacobs on the 22nd July 2013.

2.0 BACKGROUND

Historic Background

- 2.1 The earliest known activity in Selby dates from the Roman period though its extent and nature is still being researched. Post-Roman and early medieval activity has been attested to since the late 19th century (Jacobs, 2013, 10). The place name for Selby is first recorded in *c.*1030 as *Seleby* and then as *Salebi* in the Domesday Book of 1086. The name is derived from the Old English *sele* or Old Scandinavian *selja* meaning ‘farmstead or village near (a copse of) willow-trees’ (Mills, 1998, 305), with the abbey being established in the 1060/70s. From then onwards the town and abbey steadily develop as a centre of regional importance. For fuller details of the history of Selby see Jacobs, 2013.
- 2.2 Selby Abbey School was established as part of the National School Movement in 1857 on a grant of a parcel of land from Lord Londesborough on the eastern side of New Lane. The school opened in January the following year, providing places for 350 boys, girls and infants, and separate houses for the school master and school mistress, all designed in the Tudor style. The layout of the original National School is shown on the 1891 Ordnance Survey Town Plan of Selby which shows the T-shaped school building, flanked by projecting schoolhouses to the northeast and southeast, surrounded by playgrounds with a dividing wall to segregate male and female pupils (Jacobs, 2013, 12).

- 2.3 The school then developed over the first part of the 20th century which resulted in the construction of the infant school in 1927 and a further set of classrooms along the New Lane frontage being built in 1933-4. For fuller details of the development of the school see Jacobs, 2013.

Topography and Land-use

- 2.4 The school lies at a height of c.5mOD in an area of level ground. The site is surrounded by a mixture of retail and residential buildings.

3.0 AIMS AND OBJECTIVES

- 3.1 The objective of the photographic recording was to compile a photographic record of the building. The specific aims were to:

- Record the condition of the building at the current point in time and to
- Record any historic features that may survive.

4.0 METHODOLOGY

- 4.1 The photographic recording was undertaken using a 35mm analogue Single Lens Reflex camera with black and white print film (Ilford XP2 ASA400) and colour digital photography at 14 megapixel resolution.
- 4.2 The recording consisted of general views of the school buildings and their setting along with its external appearance (both at right angles and obliquely). A record of the overall appearance of the interior of the school building and individual rooms was also made along with detail of any relevant structural or decorative detail.

5.0 RESULTS

- 5.1 Overall it was possible to create a thorough record of the various school buildings showing the current condition and usage. There was an exception in two areas where recording was not permitted (shown on Figure 2). The first of these was due to the presence of the pre-school group in the eastern end of the Infants School. This group was in the premises everyday so access would not be possible during any weekday. It was also pointed out by the school staff that that part of the school was to be unaffected by the refurbishment works. The second area was the room at the north-western end of the Infants School where a meeting was being held all day on the day of the survey. In addition to this due to the failure of the flash gun for the black and white camera the poorly light downstairs of the School Masters and Mistresses Houses was only recorded by digital photography.

- 5.2 The recording showed that although the majority of the external appearance of the buildings appeared to be much as it was when the various phases were built (Plate 1) the internal fixtures and fittings had been largely lost over time (Plate 2). This loss of detail is due to various improvements made to the school over time such as the installation of electric lighting through to modern computer networks.



Plate 1. Part of the School Masters House of the 1858 National School showing original construction materials, looking north-east



Plate 2. Interior of classroom in South Range with only modern features, looking ESE

1858 National School (*Figure 3*)

- 5.3 The National School is a brick built, single story structure with sandstone detailing around the doors and windows under a grey slate roof. The original building consisted of three ranges (North, South and West) along with the two storey School Masters and Mistresses Houses in the Tudor style. See Jacobs, 2013 for full details of the schools history, construction dates and stylistic details. The former School Masters house (Plates 1 & 3) is currently in use as an administration block (Plate 4).



Plate 3. School Masters House, looking north-east

The School Masters House (*Figure 7*)

- 5.4 The larger size of the School Masters House can be seen to reflect the hierarchy between the male and female teachers. Externally the eastern elevation can be seen to retain evidence for two blocked window openings which now correspond with the staff toilets. Apart from this the external appearance of the building is large unaltered (Plate 6).
- 5.5 As already mentioned above the internal details of the building have largely been lost to the various refurbishments carried out over the last 150 years (Plate 4). The following original/early details surviving were noted:

- Moulded cornice in the most southerly of the rooms in the School Masters House
- Some wooden windows and moulded architrave
- A surviving panelled door in the school master's house located on the first floor, at the entrance to the southern-most room



Plate 4. Typical interior of administration room, note cornice, looking north-east



Plate 5. Blocked openings on the eastern elevation of the School Masters House



Plate 6. School Masters House, looking north-west

The School Mistresses House (Figure 5)

- 5.6 Of all the buildings in the complex the former School Mistresses House retained the most original or early features and fittings (Plate 7). Within the house all of the original or early internal doors and moulded architraves – including the main bedroom cupboard door – (Plate 8) survived with locks (Plate 9) and one coat hook in the main bedroom (Plate 10) which may be original. The majority of the windows appear to date from a later refurbishment (Plate 11) but the one in the dining room could be original (Plate 12).
- 5.7 The other sole surviving original feature was the wooden banisters with diamond shaped spindles and turned newel posts (Plate 14). Evidence for the construction of the banisters can be seen in a small rectangular copper alloy plate used to connect the sections of hand rail (Plates 15). None of the fireplaces survived and externally the boot scraper was in a very poor condition.



Plate 7. Exterior view of School Mistresses House, looking south-east



Plate 8. Door in main bedroom with original lock and coat hook, looking south-west



Plate 9. Original lock on main bedroom door, note decorative chamfer on door panels



Plate 10. Original coat hook on back of main bedroom door



Plate 11. Detail of later window fittings. Lounge window, looking WNW



Plate 12. Detail of ?original window fitting. Dining room window, looking WNW



Plate 13. Inside of back door to house, looking ESE



Plate 14. Detail of the bottom of the stairs showing newel post and spindles



Plate 15. Detail showing copper alloy connection plates for handrail of banisters

Main School Building (Figures 4 & 5)

- 5.8 Apart from the widespread replacement of windows with modern uPVC double glazed units the majority of the exterior of the main building remains largely unchanged (Plates 16-18). Although the original wooden windows have largely been replaced there were only two openings which had lost their original configuration of stone transoms. An example of one of these can be seen in the eastern elevation (Plate 17). Internally the historic layout of the National School remains visible, despite later subdivision and alteration. The school rooms for girls, boys and infants were located to the west, south and north respectively and were each originally formed by a single large space, which may have been divided with curtains when required. The current classroom layout dates largely from the later 19th century when timber and glass partitions were inserted to create smaller classrooms, some of which survive today. Survival of historic fixtures and fittings within the school is limited to original sash and casement windows, memorial stones of late 19th century date, timber-glazed classroom partitions and a door with gothic hinges in the north range (Jacobs, 2013, 17).
- 5.9 Internally as with the School Masters House successive refurbishments have removed most of the original features. A later 19th century feature which has survived are the glazing panels between the South Range and the West Range (Plate 19) and the South Range and the Staff Room. The surviving radiators in this section appear to be from a refurbishment of the early 20th century.



Plate 16. Northern elevation of main school building, looking south-west



Plate 17. Eastern elevation of main school building, looking north-west



Plate 18. Southern elevation of main school building, looking north



Plate 19. South range of the main school buildings, showing the glazed partition between the south and west Ranges

1897 Harper Memorial (*Figure 5*)

- 5.10 Within this single large room the only feature of interest was the commemoration plaque for the establishing of the school (Plate 21), all other features appear to have been replaced over time. In addition there are a number of blocked mullion windows (Honeywell, 2013, *pers comm*).



Plate 20. Interior of Harper Memorial Hall, looking west

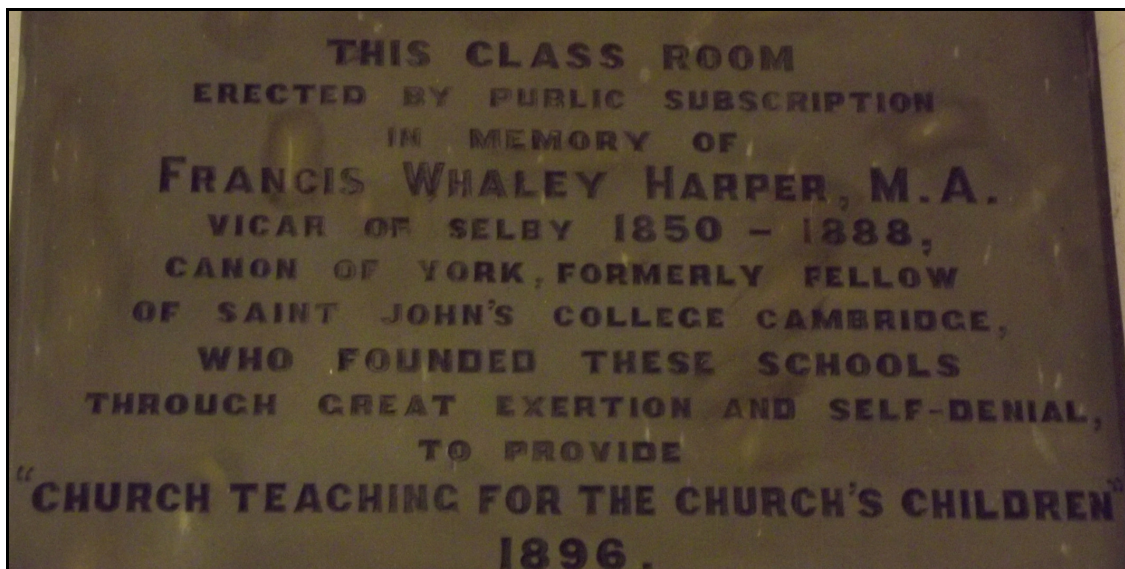


Plate 21. Detail of dedication plaque at western end

1890-1900 Additions (*Figure 4*)

- 5.11 As with the other parts of the school these two modest additions remain largely unchanged externally but internally of wholly modern character. The small

building to the north of the main school (Plate 22) is used as a boiler room whilst the addition to the east is a kitchen storeroom (Plate 23).



Plate 22. Northern addition to main building, looking south-west



Plate 23. Eastern addition to main building, looking west

1933-4 Senior Classroom Extension (*Figure 6*)

- 5.12 The school building was extended again in 1933-1934 with the construction of a new range of classrooms for senior pupils (Plate 24). This range is located in front of the Harper Memorial classroom and now forms the elevation to New Lane. This is a single-storey red brick range, with a central corridor flanked by classrooms to either side which are illuminated by large windows along the external elevations. As with the other buildings the majority of the windows are modern replacements (Plate 24) and most internal features have been lost. Those features which survived were the classroom doors, wooden tongue and groove panelling below the waist level and built in wooden cupboards (Plates 25 & 26), though the cupboard doors have been lost.



Plate 24. Eastern elevation of the Seniors Classrooms, looking west



Plate 25. Interior of classroom on eastern side of block, showing surviving wooden panelling, door and remains of built in cupboards



Plate 26. Detail of an original built in wooden cupboard in one of the classrooms

1927 Infants School (*Figure 7*)

- 5.13 The Selby Abbey Infant School was opened in 1927 to provide additional onsite accommodation for the school's infant department. This is a single-storey red brick building with slate roof, with tall segmental-headed windows lining the south, east and west elevations, all of which contain modern uPVC fittings. In plan, the building is formed by a central hall flanked by corridors to the east, west and south, with classrooms arranged around the outside of the corridors, all of which are separately roofed. A small separately roofed block with a substantial tall chimney stack is located to the northwest of the hall which is likely to have originally held the offices for the Infant School. Internally, the hall retains cornicing and a picture rail and some classrooms retain part-glazed doors; however overall little remains of original fixtures and fittings (Jacobs, 2013, 19 *et seq*). Externally it could be seen that the nature of this block was the same as the main school building. That is externally little changed from its construction apart from the replacement of the windows (Plate 27) but internally almost devoid of original features (Plate 28) and many of the class rooms have had dividing walls removed to create larger internal spaces.



Plate 27. Southern elevation of the Infant School, looking north-east

- 5.14 A few original features do survive and include elements of internal glazing (Plate 29) which would allow light into the hallway and ventilation in to the inner

rooms. Some cast iron radiators (Plate 30) and the moulded cornice around the top of the main hall (Plate 31).



Plate 28. Typical classroom in the Infant School



Plate 29. Internal glazing at eastern end of building



Plate 30. Original cast iron radiator, looking south



Plate 31. Moulded cornice in main hall

Setting (*Figure 8*)

- 5.15 The school lies within Selby Town Conservation Area which is composed of a mixture of historic (Plates 32 & 33) and modern buildings (Plate 34). The surviving historic buildings are concentrated on the western side of the school and as a group provide a good example of the 19th century streetscape. However, the area to the south and east of the school has seen much re-development and is mainly composed of modern retail or service outlets.



Plate 32. Nos 46-72 New Lane, Grade II Mid 19th century housing to the south-west of the school (Asset 13)



Plate 33. 1866 Congregational Chapel to the north-west of the school (Asset 3)



Plate 34. View towards senior classrooms with modern building on right hand side

6.0 DISCUSSION and CONCLUSION

- 6.1 As can be seen from the results of the recording described above the external appearance of the various school buildings are largely unchanged with the most significant alteration being the widespread replacement of the windows. However, internally most of the original fixtures and fittings appear to have been lost over time and only a few radiators, internal glazing and various mouldings surviving to show earlier configurations. The one exception to this is the School Mistresses House where apart from the fireplaces most of the internal detail survives in a good condition.

References

- English Heritage, 2006, *Understanding Historic Buildings; A Guide to Good Recording Practice*
- Institute of Field Archaeologists, 2001a
Standard and Guidance for an Archaeological Investigation and Recording of Standing Buildings or Structures (September 1995, revised September 2008)
- Jacobs (2013) *Selby Abbey Church of England School Future Expansion. Heritage Statement*. Unpublished Consultants Report.
- Mills AD (1998) *Dictionary of English Place-names*. Oxford University Press. Oxford.
- Morris RW (1982) *Yorkshire Through Place Names*. David and Charles. London.

Acknowledgements

I would like to thank Paul Cockerill of Jacobs for inviting me to undertake the project, Rob McNaught, Sandra Honeywell and Johnny Dempsey all of Jacobs for supplying the various documentation and lastly thanks to Jim Fraser for annotating the various site plans.

APPENDIX 1

Site	Selby Abbey Church of England Primary School	Film Number	Film Type	Pixels
		1	Digital	14m
Frame	Facing	Description	Who/Date	
1	NE	Infant's Block, interior of classroom	JB 22/07/13	
2	SE	Infant's Block, interior of classroom	JB 22/07/13	
3	NW	Infant's Block, interior of classroom	JB 22/07/13	
4	W	Infants block, detail of interior glazing	JB 22/07/13	
5	S	Detail of internal doorframe/glazing	JB 22/07/13	
6	SW	Infant's Block, interior of classroom	JB 22/07/13	
7	SW	Infants block, interior of classroom	JB 22/07/13	
8	E	Infants block, interior of classroom	JB 22/07/13	
9	S	Infants block, detail of cast iron radiator	JB 22/07/13	
10	NE	Infants block, interior of Hall	JB 22/07/13	
11	NE	Infants block, interior of Hall	JB 22/07/13	
12	Up	Infants block, detail of moulding in Hall	JB 22/07/13	
13	Up	Infants block, detail of moulding in Hall	JB 22/07/13	
14	NW	Infants block, interior of Hall	JB 22/07/13	
15	SE	Infants block, interior of classroom	JB 22/07/13	
16	SW	Infants block, interior of classroom	JB 22/07/13	
17	NE	Infants block, interior of classroom	JB 22/07/13	
18	N	Infants block, access corridor	JB 22/07/13	
19	W	Infants block, interior of store/classroom	JB 22/07/13	
20	W	Infants block, interior of toilet	JB 22/07/13	
21	W	Infants block, interior of storeroom	JB 22/07/13	
22	W	Infants block, access corridor	JB 22/07/13	
23	E	Exterior Infant School, main entrance	JB 22/07/13	
24	SE	Exterior Infant School, southeast corner	JB 22/07/13	
25	NE	Exterior Infant School, main entrance	JB 22/07/13	
26	SE	Exterior Infant School, west elevation	JB 22/07/13	
27	S	Exterior Infant School, north elevation	JB 22/07/13	
28	NE	Exterior Infant School, south elevation	JB 22/07/13	
29	NW	Exterior of School Master's House	JB 22/07/13	
30	W	Detail of stone and brick arch on S end Master's Ho.	JB 22/07/13	
31	W	Exterior of School Master's House, east elevation	JB 22/07/13	
32	W	Exterior of School Master's House, east elevation	JB 22/07/13	
33	NW	Exterior of main school with altered window, east elevation	JB 22/07/13	
34	NW	School and 1890/1900 addition, east elevation	JB 22/07/13	
35	NW	School, Master's House and Senior Classrooms	JB 22/07/13	
36	NW	School, Master's House and Senior Classrooms	JB 22/07/13	
37	NW	School and Senior Classrooms, east elevation	JB 22/07/13	
38	NE	Exterior of School Master's House.	JB 22/07/13	
39	E	Detail of stone and brick arch on south end of west	JB 22/07/13	

Frame	Facing	Description	Who/Date
		elevation of Master's House.	
40	N	Central part of 1858 school, south elevation, with Master's House to right	JB 22/07/13
41	N	Western end of main school, south elevation	JB 22/07/13
42	NE	Master's House	JB 22/07/13
43	NE	Western end of main school	JB 22/07/13
44	NW	Junction of Harper Memorial classroom and Senior Classrooms	JB 22/07/13
45	SE	Senior Classrooms showing blocked opening	JB 22/07/13
46	NW	Southern elevation of Senior Classrooms	JB 22/07/13
47	NE	Main school, Master's House and Infants School	JB 22/07/13
48	W	Eastern end of 1890/1900 addition, now kitchen stores	JB 22/07/13
49	SE	1890/1900 addition and School Mistress' House	JB 22/07/13
50	E	Exterior of School Mistress' House, east elevation	JB 22/07/13
51	SE	Exterior of School Mistress' House, east elevation	JB 22/07/13
52	SE	Exterior of School Mistress' House, east elevation	JB 22/07/13
53	SE	Exterior of School Mistress' House & main school, north elevation	JB 22/07/13
54	SE	Exterior of main school with 1890/1900 addition, north elevation	JB 22/07/13
55	SE	Exterior of School Mistress' House, elevation west	JB 22/07/13
56	S	Exterior of main school with 1890/1900 addition, north elevation	JB 22/07/13
57	SE	Exterior of main school with Senior Classrooms , north elevation	JB 22/07/13
58	S	North elevation of Harper Memorial classroom	JB 22/07/13
59	SE	Harper Memorial classroom junction with Senior Classrooms, north elevation	JB 22/07/13
60	SW	Junction of Harper Memorial classroom with main school, north elevation	JB 22/07/13
61	SW	Harper Memorial classroom, north elevation	JB 22/07/13
62	S	Eastern elevation of Senior Classrooms	JB 22/07/13
63	E	School Sign	JB 22/07/13
64	SE	Eastern elevation of Senior Classrooms	JB 22/07/13
65	NE	Eastern elevation of Senior Classrooms	JB 22/07/13
66	NE	Former surface air raid shelter, Asset 7	JB 22/07/13
67	N	View north along New Lane	JB 22/07/13
68	NW	St Marks Square (Nos 42-76), New Lane (Asset 13)	JB 22/07/13
69	NW	Church of St James (Asset 10)	JB 22/07/13
70	N	View up north along New Lane, school to right	JB 22/07/13
71	W	Detail of carved lion on house opposite school	JB 22/07/13
72	SW	House with lion statue & Standerling Hall (Asset 14)	JB 22/07/13
73	W	Standerling Hall (Asset 14)	JB 22/07/13
74	NW	30-40 New Lane (Asset 4)	JB 22/07/13
75	NW	1866 Congregational Chapel and House (Asset 3)	JB 22/07/13

Frame	Facing	Description	Who/Date
76	SW	House with lion statue & Standerling Hall (Asset 14)	JB 22/07/13
77	SW	1866 Congregational Chapel and House (Asset 3)	JB 22/07/13
78	SE	Former Magistrates Court (Asset 5)	JB 22/07/13
79	SE	Former Magistrates Court (Asset 5)	JB 22/07/13
80	E	Ground floor interior of School Master's House, note architrave	JB 22/07/13
81	NE	Interior of School Master's House, ground floor	JB 22/07/13
82	N	Interior of School Master's House, ground floor	JB 22/07/13
83	SE	Interior of School Master's House, ground floor	JB 22/07/13
84	S	Interior of School Master's House, ground floor	JB 22/07/13
85	ESE	Interior of School Master's House, ground floor	JB 22/07/13
86	Up	Interior of School Master's House, ground floor	JB 22/07/13
87	S	Interior of School Master's House, ground floor	JB 22/07/13
88	NW	Interior of South Range, 1858 school building	JB 22/07/13
89	SE	Interior of South Range, 1858 school building	JB 22/07/13
90	S	Cast iron radiator in South Range, 1858 school building	JB 22/07/13
91	NE	Interior of classroom, North Range, 1858 school building	JB 22/07/13
92	NE	Detail of glazing in classroom, North Range, 1858 school building	JB 22/07/13
93	W	Harper Memorial classroom, interior	JB 22/07/13
94	NW	Interior of classroom, north end West Range, 1858 school building	JB 22/07/13
95	SE	Interior of classroom, south end West Range, 1858 school building	JB 22/07/13
96	E	Original glazing at eastern side of West Range, 1858 school building	JB 22/07/13
97	SE	Interior Harper Memorial classroom	JB 22/07/13
98	NW	Interior of classroom, Senior Classrooms	JB 22/07/13
99	NW	Interior of classroom, Senior Classrooms	JB 22/07/13
100	SE	Interior of classroom, Senior Classrooms	JB 22/07/13
101	NE	Detail of panelling in Senior Classroom	JB 22/07/13
102	S	Main corridor of Senior Classrooms	JB 22/07/13
103	SE	Interior of classroom, Senior Classrooms	JB 22/07/13
104	NW	Interior of classroom, Senior Classrooms	JB 22/07/13
105	SE	Interior of classroom, Senior Classrooms	JB 22/07/13
106	NE	Interior of classroom, Senior Classrooms	JB 22/07/13
107	SW	Interior of classroom, Senior Classrooms	JB 22/07/13
108	W	Detail of cupboard in Senior Classroom	JB 22/07/13
109	SE	Interior of classroom, Senior Classrooms	JB 22/07/13
110	S	Interior of classroom, Senior Classrooms	JB 22/07/13
111	E	Interior of staff room	JB 22/07/13
112	W	Interior of staff room	JB 22/07/13
113	SE	Interior of office in School Master's House, first floor	JB 22/07/13
114	SE	Interior of office in School Master's House, first floor	JB 22/07/13
115	E	Kitchen in North Range, 1858 school building	JB 22/07/13

Frame	Facing	Description	Who/Date
116	N	Detail of Gothick style door from original building	JB 22/07/13
117	S	Detail of dedication plaque for Harper Memorial classroom	JB 22/07/13
118	S	Detail of dedication plaque for Harper Memorial classroom	JB 22/07/13
119	W	Detail of main bedroom window, school mistress' house, first floor	JB 22/07/13
120	SE	Cupboard in main bedroom, school mistress' house, first floor	JB 22/07/13
121	SE	Cupboard in main bedroom, door shut, school mistress' house, first floor	JB 22/07/13
122	W	Detail of lock, school mistress' house, first floor	JB 22/07/13
123	S	Bedroom door, school mistress' house, first floor	JB 22/07/13
124	Up	Detail of coat hook on bedroom door, school mistress' house, first floor	JB 22/07/13
125	Down	Detail of lock on bedroom door, school mistress' house, first floor	JB 22/07/13
126	NE	Main bedroom, school mistress' house, first floor	JB 22/07/13
127	E	Top of banisters, school mistress' house, first floor	JB 22/07/13
128	Up	Detail of door frame moulding, school mistress' house, first floor	JB 22/07/13
129	S	Second bedroom	JB 22/07/13
130	Down	Detail of bathroom door lock	JB 22/07/13
131	S	Bathroom, school mistress' house, first floor	JB 22/07/13
132	NE	Top of stairs, school mistress' house, first floor	JB 22/07/13
133	W	Detail of window catches, school mistress' house, ground floor	JB 22/07/13
134	NE	Lounge, school mistress' house, ground floor	JB 22/07/13
135	E	Fireplace in lounge, school mistress' house, ground floor	JB 22/07/13
136	S	Detail of bottom of stairs, school mistress' house, ground floor	JB 22/07/13
137	S	Dining room, school mistress' house, ground floor	JB 22/07/13
138	W	Detail of window catch in dining room, school mistress' house, ground floor	JB 22/07/13
139	S	Kitchen, school mistress' house, ground floor	JB 22/07/13
140	N	Larder under stairs, school mistress' house, ground floor	JB 22/07/13
141	E	Back of kitchen door to outside, school mistress' house, ground floor	JB 22/07/13
142	W	Back of front door, school mistress' house, ground floor	JB 22/07/13
143	Down	Detail of copper alloy connector on handrail, school mistress' house, first floor	JB 22/07/13
144	Down	Detail of copper alloy connector on handrail, school mistress' house, first floor	JB 22/07/13
145	E	Toilet, school mistress' house, first floor	JB 22/07/13
146	E	Front doorway, school mistress' house, ground floor	JB 22/07/13

Frame	Facing	Description	Who/Date
147	Down	Remains of boot scraper, school mistress' house	JB 22/07/13
148	W	Blocked passageway on Master's House	JB 22/07/13
149	NW	Central part of South Range, 1858 school building, south elevation	JB 22/07/13
150	NE	Master's House joining to school, west elevation	JB 22/07/13
151	NW	Southern end of West Range	JB 22/07/13
152	NE	Master House, west elevation	JB 22/07/13
153	S	View along New Lane	JB 09/09/13
154	E	View along north side of former Magistrates Court	JB 09/09/13
155	E	View along north side of survey area	JB 09/09/13
156	NE	View of northern boundary of survey area towards shops	JB 09/09/13
157	N	View along New Lane	JB 09/09/13
158	SW	View of rear of former Magistrates Court	JB 09/09/13
159	S	View across car park to north side of Main School Building	JB 09/09/13
160	SW	View across car park to north side of Main School Building and former Magistrates Court	JB 09/09/13
161	S	View across car park to north side of Infants School Building	JB 09/09/13
162	SE	View across car park to rear of Morrison's Supermarket	JB 09/09/13
163	SW	View across car park to north side of Infants School Building and former Magistrates Court	JB 09/09/13
164	S	View parallel to Morrison's and to north side of Infants School	JB 09/09/13
165	NW	View towards rear of shops along northern boundary of study area	JB 09/09/13
166	W	View across car park to eastern end of Main School Building	JB 09/09/13
167	SW	Eastern end of Main School Building and north side of Infants School	JB 09/09/13
168	S	View parallel to Morrison's showing north side of Infants School	JB 09/09/13
169	N	View parallel to Morrison's showing east side of Infants School	JB 09/09/13
170	W	Southern side of Infants School	JB 09/09/13
171	SW	Southern side of Infants School and playing field to the south of the school	JB 09/09/13
172	N	View parallel to Morrison's showing east side of Infants School	JB 09/09/13
173	NW	Southern side of Infants School	JB 09/09/13
174	W	Playing field to south of school	JB 09/09/13
175	N	Eastern end of the southern side of the Infants School	JB 09/09/13
176	N	View across part of playing field to southern side of Infants School	JB 09/09/13
177	NW	View across part of playing field to southern side of	JB 09/09/13

Frame	Facing	Description	Who/Date
178	NE	Infants and Main School buildings View across part of playing field to eastern side of Infants School	JB 09/09/13
179	N	View across part of playing field to southern side of Infants and Main School buildings and Senior Block	JB 09/09/13
180	NW	View across part of playing field to southern side of Senior Block and Main School buildings	JB 09/09/13
181	NE	View across part of playing field to southern side of Infants School	JB 09/09/13

Site	Selby Abbey Church of England Primary School	Film Number	1	Film Type	Black & White print	ASA	400
Ref No on plans	Frame	Facing	Description			Who/Date	
			<i>Frames 1A to 10A different project</i>				
1	11A	NE	Infant's Block, interior of classroom			JB 22/07/13	
2	12A	SE	Infants block, interior of classroom			JB 22/07/13	
3	13A	NW	Infants block, interior of classroom			JB 22/07/13	
4	14A	W	Infants block, detail of interior glazing			JB 22/07/13	
5	15A	S	Infants block, detail of internal doorframe/glazing			JB 22/07/13	
6	16A	SW	Infants block, interior of classroom			JB 22/07/13	
7	17A	SW	Infants block, interior of classroom			JB 22/07/13	
8	18A	S	Infants block, detail of cast iron radiator			JB 22/07/13	
9	19A	NE	Infants block, interior of Hall			JB 22/07/13	
10	20A	Up	Infants block, detail of moulding in Hall			JB 22/07/13	
11	21A	NW	Infants block, interior of Hall			JB 22/07/13	
12	22A	SE	Infants block, interior of classroom			JB 22/07/13	
13	23A	SW	Infants block, interior of classroom			JB 22/07/13	
14	24A	NE	Infants block, interior of classroom			JB 22/07/13	
15	25A	N	Infants block, access corridor			JB 22/07/13	
16	26A	W	Infants block, interior of store/classroom			JB 22/07/13	
17	27A	W	Infants block, interior of toilet			JB 22/07/13	
18	28A	W	Infants block, interior of storeroom			JB 22/07/13	
19	29A	W	Infants block, access corridor			JB 22/07/13	
20	30A	E	Exterior Infant School, main entrance			JB 22/07/13	
21	31A	SE	Exterior Infant School, west elevation			JB 22/07/13	
22	32A	NE	Exterior Infant School, southeast corner			JB 22/07/13	
23	33A	SE	Exterior Infant School, west elevation			JB 22/07/13	
24	34A	S	Exterior Infant School, north elevation			JB 22/07/13	
25	35A	NE	Exterior Infant School, south elevation			JB 22/07/13	
26	36A	NW	Exterior of School Master's House			JB 22/07/13	

Site	Selby Abbey Church of England Primary School		Film Number	2	Film Type	Black & White print	ASA	400
Ref No on plans	Frame	Facing	Description		Who/Date			
28	0	W	Exterior of School Master's House, east elevation		JB 22/07/13			
29	1	W	Exterior of School Master's House, east elevation		JB 22/07/13			
30	2	W	Exterior of School Master's House, east elevation		JB 22/07/13			
31	3	NW	Exterior of main school with altered window, east elevation		JB 22/07/13			
32	4	NW	School and 1890/1900 addition, east elevation		JB 22/07/13			
33	5	NW	School, Master's House and Senior Classrooms		JB 22/07/13			
34	6	NW	School, Master's House and Senior Classrooms		JB 22/07/13			
35	7	NE	Exterior of School Master's House, west elevation		JB 22/07/13			
36	8	E	Detail of stone and brick arch on south end of west elevation of Master's house.		JB 22/07/13			
37	9	N	Central part of 1858 school, south elevation, with Master's House to right		JB 22/07/13			
38	10	N	Central part of 1858 school, south elevation, with Master's House to right		JB 22/07/13			
39	11	N	Western end of main school, south elevation		JB 22/07/13			
40	12	NE	Master's House, west elevation		JB 22/07/13			
41	13	NE	Western end of main school		JB 22/07/13			
42	14	NW	Junction of Harper Memorial classroom and Senior Classrooms, south elevation		JB 22/07/13			
43	15	SE	Senior Classrooms showing blocked opening		JB 22/07/13			
44	16	NW	Southern elevation of Senior Classrooms		JB 22/07/13			
45	17	NE	Main school, Master's House and Infants School, south elevation		JB 22/07/13			
46	18	W	East elevation of 1890/1900 addition, kitchen store		JB 22/07/13			
47	19	W	East elevation of 1890/1900 addition, kitchen store		JB 22/07/13			
48	20	SE	1890/1900 addition and School Mistress' House, east elevation		JB 22/07/13			
49	21	SE	Exterior of School Mistress' House, east elevation		JB 22/07/13			
50	22	SE	Exterior of School Mistress' House, east elevation		JB 22/07/13			
51	23	W	Exterior of Mistress' House & 1890/1900		JB 22/07/13			

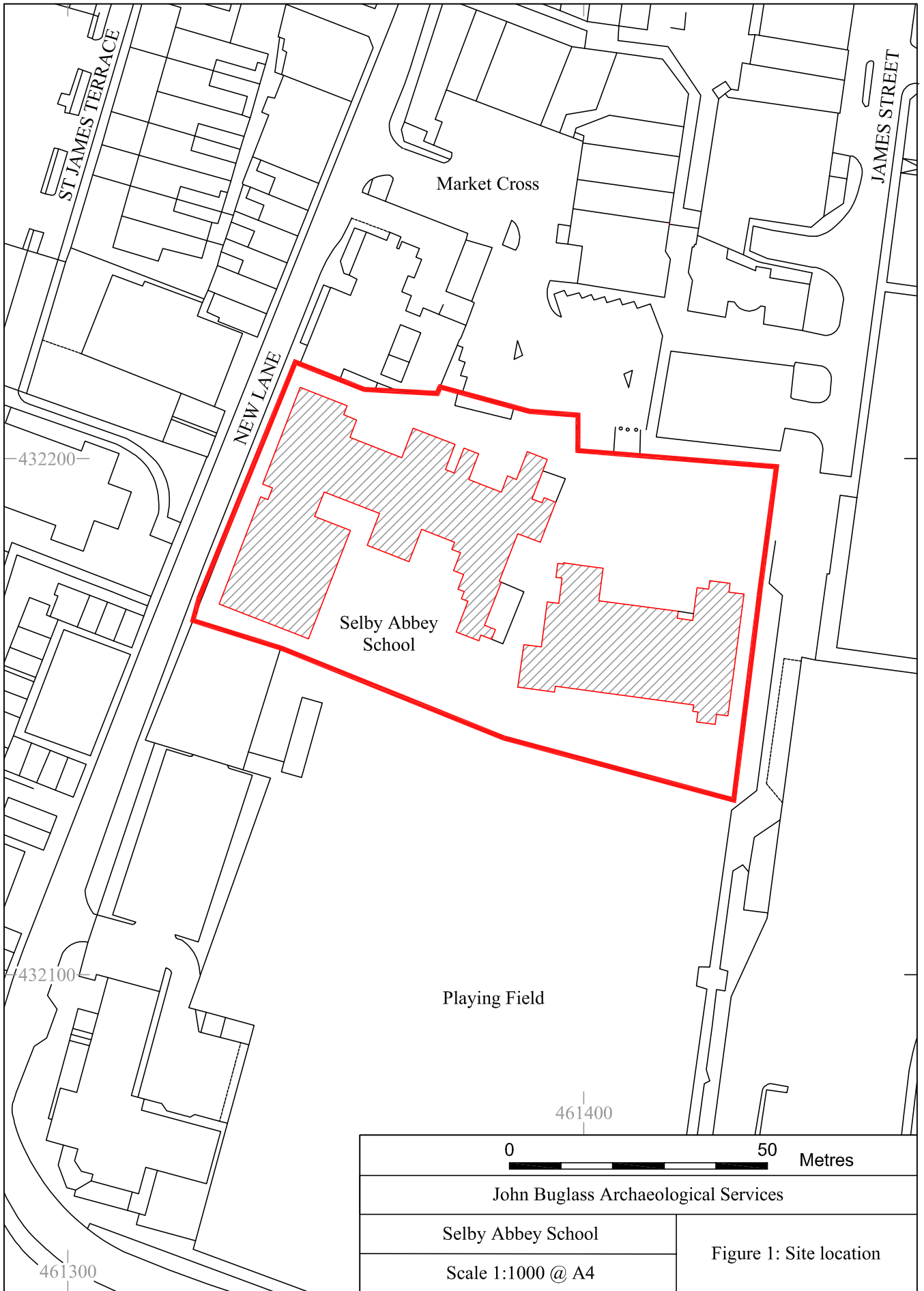
			extension, east elevation	
52	24	SE	Exterior of School Mistress' House & main school, north elevation	JB 22/07/13
53	25	SE	Exterior of main school with 1890/1900 addition (boiler house), north elevation	JB 22/07/13
54	26	SE	Exterior of main school with 1890/1900 addition (boiler house), north elevation	JB 22/07/13
55	27	SE	Exterior of School Mistress' House, west elevation	JB 22/07/13
56	28	S	Exterior of main school with 1890/1900 addition (boiler house)	JB 22/07/13
57	29	SE	Junction of Harper Memorial classroom with Senior Classrooms, north elevation	JB 22/07/13
58	30	SW	Junction of Harper Memorial classroom with main school, north elevation	JB 22/07/13
59	31	SW	Junction of Harper Memorial classroom with main school, north elevation	JB 22/07/13
60	32	SE	Northern west corner of Senior Classrooms	JB 22/07/13
61	33	SE	Eastern elevation of Senior Classrooms	JB 22/07/13
62	34	NE	Eastern elevation of Senior Classrooms	JB 22/07/13
63	35	NW	St Marks Square (Nos 42-76), New Lane (Asset 13)	JB 22/07/13
64	36	N	View north along New Lane	JB 22/07/13
65	37	NW	Church of St James (Asset 10)	JB 22/07/13

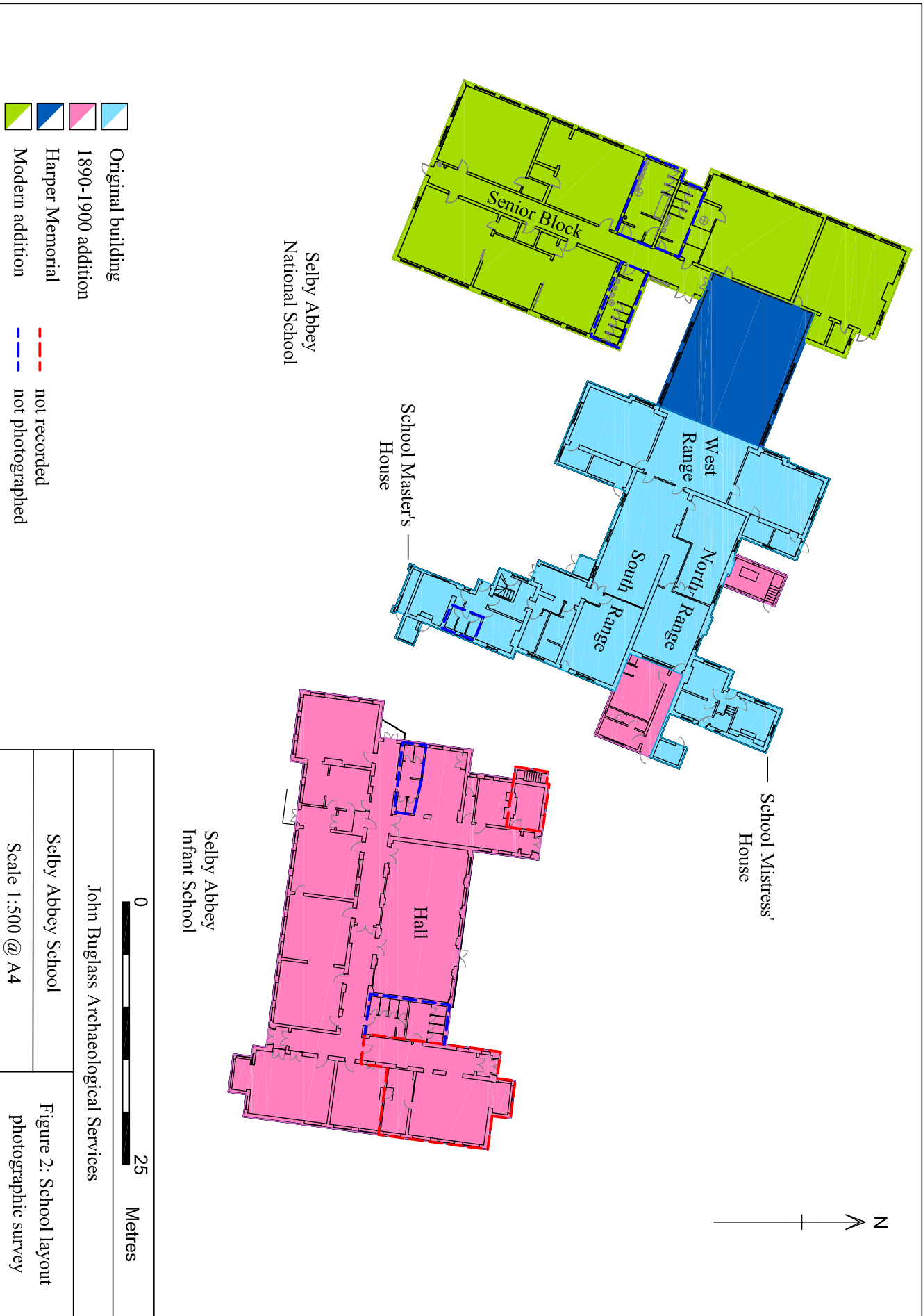
Site	Selby Abbey Church of England Primary School		Film Number	3	Film Type	Black & White print	ASA	400
Ref No on plans	Frame	Facing	Description		Who/Date			
66	0	N	Loading shot along New Lane		JB 22/07/13			
67	1	N	View up north along New Lane, school to right		JB 22/07/13			
68	2	SW	House with lion statue & Stander Hall (Asset 14)		JB 22/07/13			
69	3	W	Stander Hall (Asset 14)		JB 22/07/13			
70	4	NW	30-40 New Lane (Asset 4)		JB 22/07/13			
71	5	SW	1866 Congregational Chapel and House (Asset 3)		JB 22/07/13			
72	6	SE	Former Magistrates Court (Asset 5)		JB 22/07/13			
73	7	NE	Former surface air raid shelter, Asset 7		JB 22/07/13			
74	8	NW	Interior of South Range, 1858 school building		JB 22/07/13			
75	9	S	Cast iron radiator in South Range, 1858 school building		JB 22/07/13			
76	10	SE	Interior of South Range, 1858 school building		JB 22/07/13			
77	11	NE	Interior of classroom, North Range, 1858 school building		JB 22/07/13			
78	12	NW	Interior of classroom, north end West Range, 1858 school building		JB 22/07/13			
79	13	W	Harper Memorial classroom, interior		JB 22/07/13			
80	14	SE	Interior of classroom, south end West Range, 1858 school building		JB 22/07/13			
81	15	E	Original glazing at eastern side of West Range, 1858 school building		JB 22/07/13			
82	16	NW	Interior of classroom, Senior Classrooms		JB 22/07/13			
83	17	SE	Interior of classroom, Senior Classrooms		JB 22/07/13			
84	18	S	Main corridor of Senior Classrooms		JB 22/07/13			
85	19	SW	Interior of classroom, Senior Classrooms		JB 22/07/13			
86	20	SW	Interior of classroom, Senior Classrooms		JB 22/07/13			
87	21	NE	Interior of classroom, Senior Classrooms		JB 22/07/13			
88	22	W	Detail of cupboard in Senior Classroom		JB 22/07/13			
89	23	W	Interior of staff room, 1858 school building		JB 22/07/13			
90	24	E	Kitchen in North Range, 1858 school building		JB 22/07/13			
91	25	N	Detail of Gothick style door from , 1858 school building		JB 22/07/13			
92	26	NE	Main bedroom, school mistress' house, first floor		JB 22/07/13			
93	27	SE	Cupboard in main bedroom, door shut, school mistress' house, first floor		JB 22/07/13			
94	28	SE	Cupboard in main bedroom, school mistress'		JB 22/07/13			

			house, first floor	
95	29	S	Bedroom door, school mistress' house, first floor	JB 22/07/13
96	30	Up	Detail of coat hook on bedroom door, school mistress' house, first floor	JB 22/07/13
97	31	W	Detail of main bedroom window, school mistress' house, first floor	JB 22/07/13
98	32	S	Second bedroom, school mistress' house, first floor	JB 22/07/13
99	33	S	Bathroom, school mistress' house, first floor	JB 22/07/13
100	34	Down	Detail of bathroom door lock, school mistress' house, first floor	JB 22/07/13
101	35	E	Top of banisters, school mistress' house, first floor	JB 22/07/13
102	36	NE	Top of stairs, school mistress' house, first floor	JB 22/07/13
103	37	S	Detail of bottom of stairs, school mistress' house, first floor	JB 22/07/13
104	38	Down	Detail of copper alloy connector on handrail, school mistress' house, first floor	JB 22/07/13

Site	Selby Abbey Church of England Primary School		Film Number	Film Type	ASA
			4	Black & White print	400
Ref No on plans	Frame	Facing	Description	Who/Date	
105	0A	S	View along New Lane	JB 09/09/13	
106	1A	E	View along north side of former Magistrates Court	JB 09/09/13	
107	2A	E	View along north side of survey area	JB 09/09/13	
108	3A	NE	View of northern boundary of survey area towards shops	JB 09/09/13	
109	4A	N	View along New Lane	JB 09/09/13	
110	5A	SW	View of rear of former Magistrates Court	JB 09/09/13	
111	6A	S	View across car park to north side of Main School Building	JB 09/09/13	
112	7A	SW	View across car park to north side of Main School Building and former Magistrates Court	JB 09/09/13	
113	8A	S	View across car park to north side of Infants School Building	JB 09/09/13	
114	9A	SE	View across car park to rear of Morrison's Supermarket	JB 09/09/13	
115	10A	SW	View across car park to north side of Infants School Building and former Magistrates Court	JB 09/09/13	
116	11A	S	View parallel to Morrison's and to north side of Infants School	JB 09/09/13	
117	12A	NW	View towards rear of shops along northern boundary of study area	JB 09/09/13	
118	13A	W	View across car park to eastern end of Main School Building	JB 09/09/13	
119	14A	SW	Eastern end of Main School Building and north side of Infants School	JB 09/09/13	
120	15A	S	View parallel to Morrison's showing north side of Infants School	JB 09/09/13	
121	16A	N	View parallel to Morrison's showing east side of Infants School	JB 09/09/13	
122	17A	W	Southern side of Infants School	JB 09/09/13	
123	18A	SW	Southern side of Infants School and playing field to the south of the school	JB 09/09/13	
124	19A	N	View parallel to Morrison's showing east side of Infants School	JB 09/09/13	
125	20A	NW	Southern side of Infants School	JB 09/09/13	
126	21A	W	Playing field to south of school	JB 09/09/13	
127	22A	N	Eastern end of the southern side of the Infants School	JB 09/09/13	

128	23A	N	View across part of playing field to southern side of Infants School	JB 09/09/13
129	24A	NW	View across part of playing field to southern side of Infants and Main School buildings	JB 09/09/13
130	25A	NE	View across part of playing field to eastern side of Infants School	JB 09/09/13
131	26A	N	View across part of playing field to southern side of Infants and Main School buildings and Senior Block	JB 09/09/13
132	27A	NW	View across part of playing field to southern side of Senior Block and Main School buildings	JB 09/09/13
133	28A	NE	View across part of playing field to southern side of Infants School	JB 09/09/13





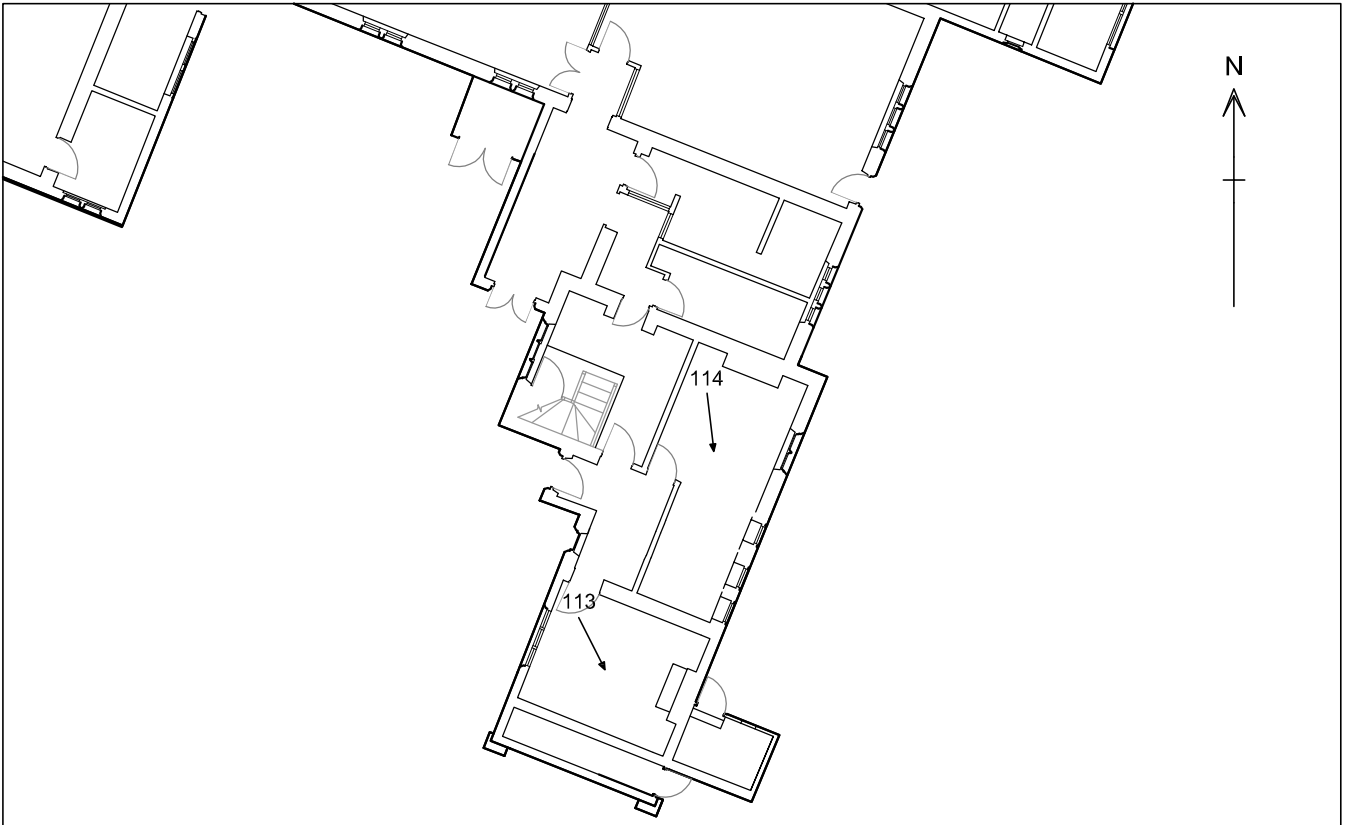


Fig 3a: First Floor

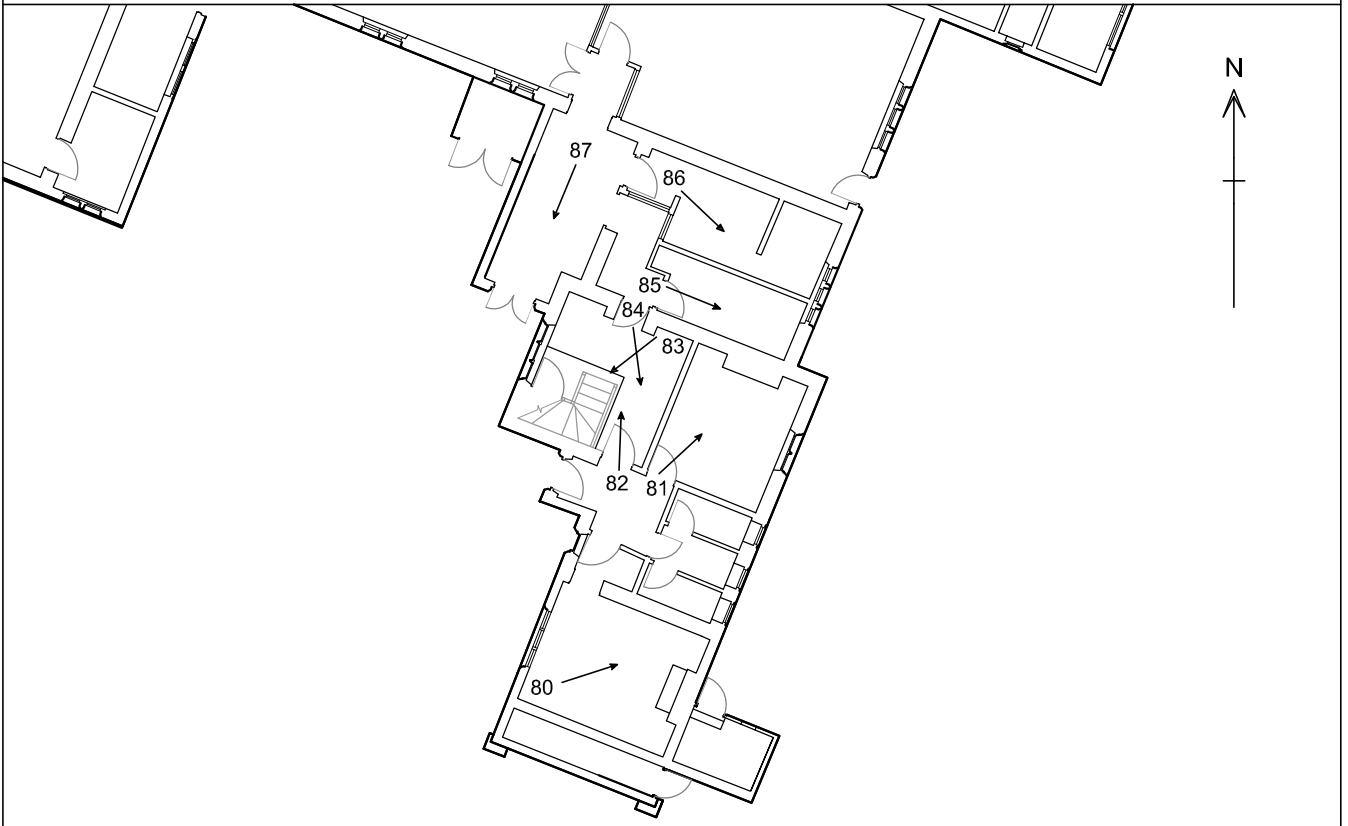


Fig 3b: Ground Floor



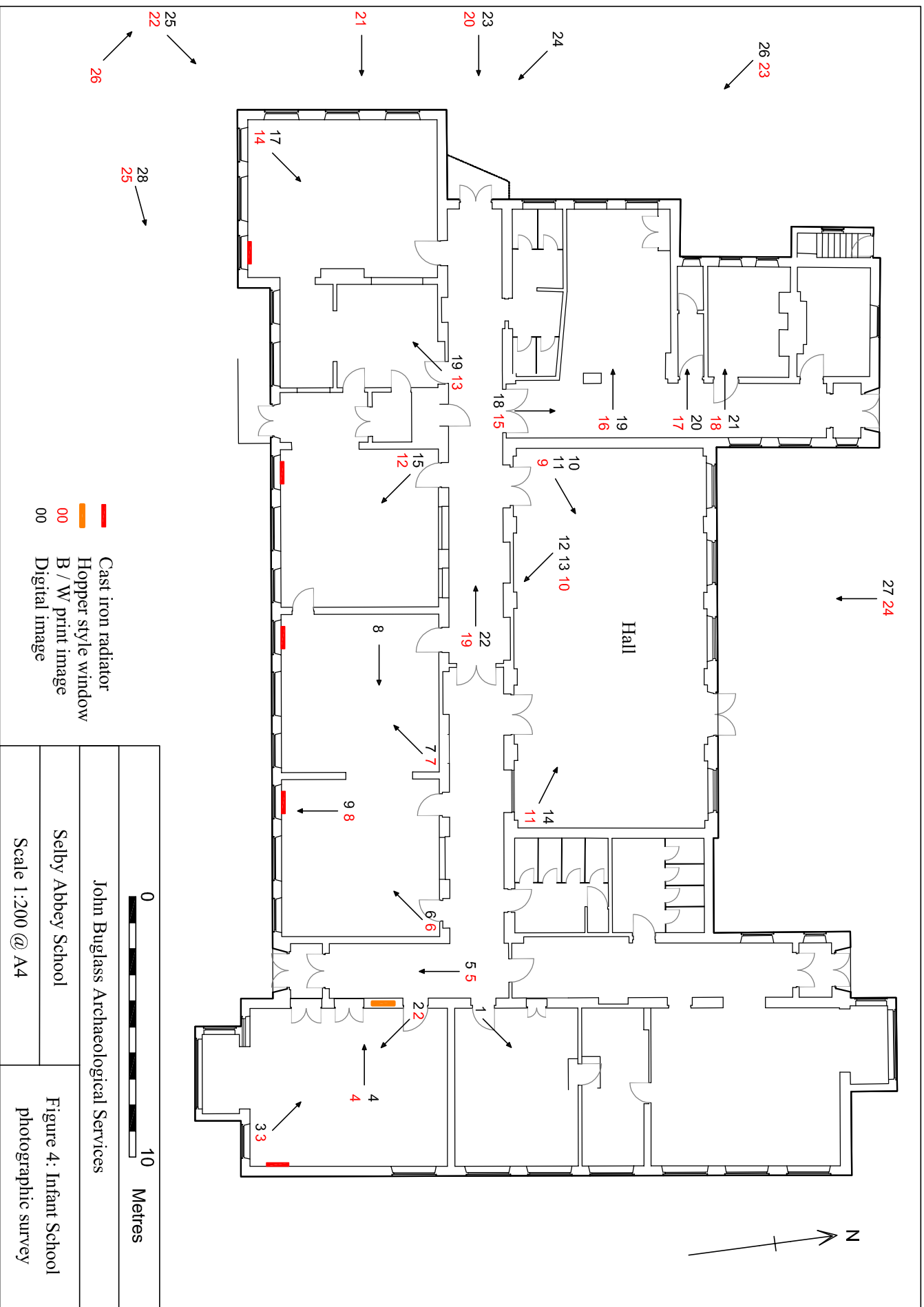
John Buglass Archaeological Services

Selby Abbey School

Scale 1:200 @ A4

Figure 3: School Master's House, photographic survey

00 B / W print image
00 Digital image



- Cast iron radiator
- Hopper style window
- 00 B / W print image
- 00 Digital image

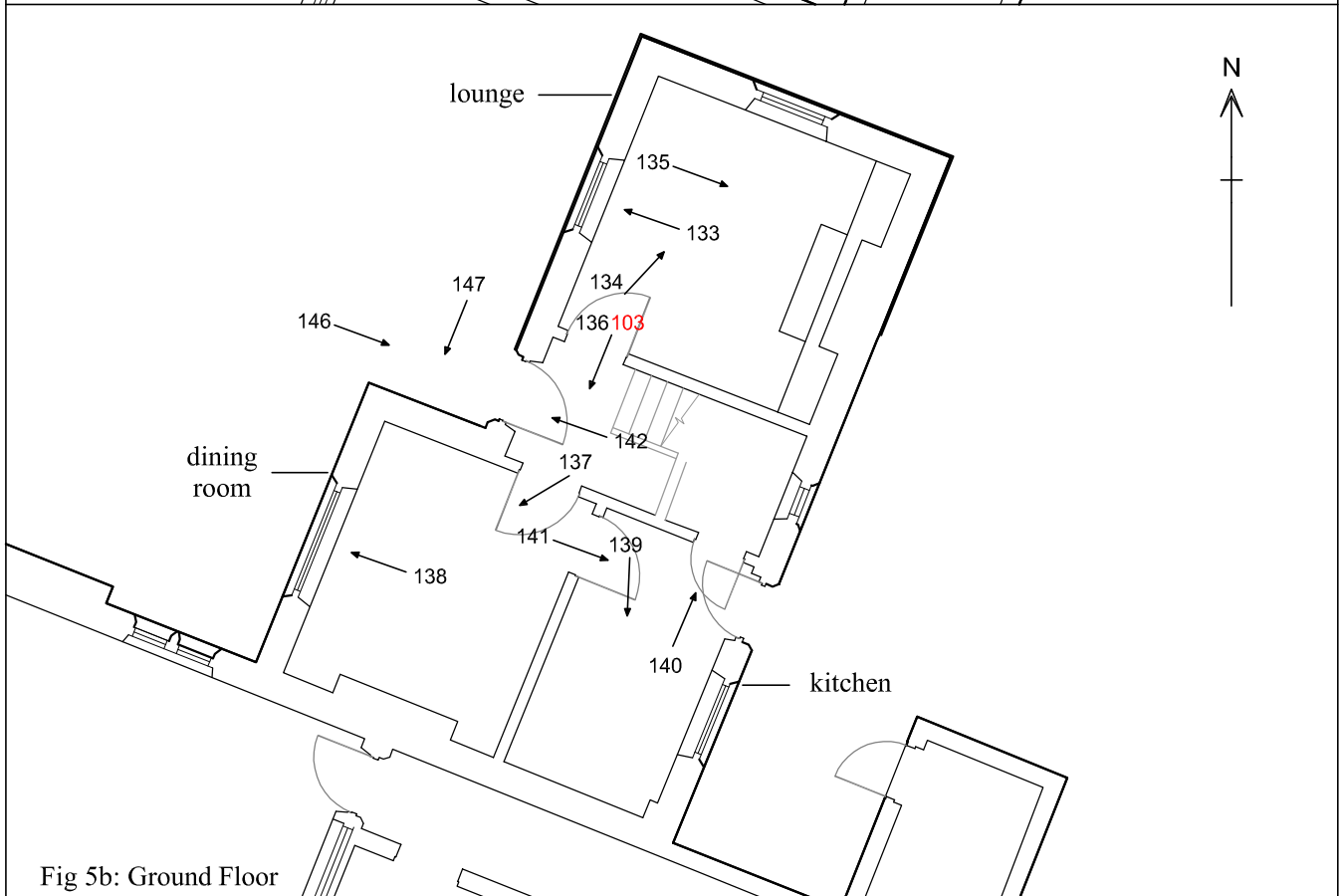
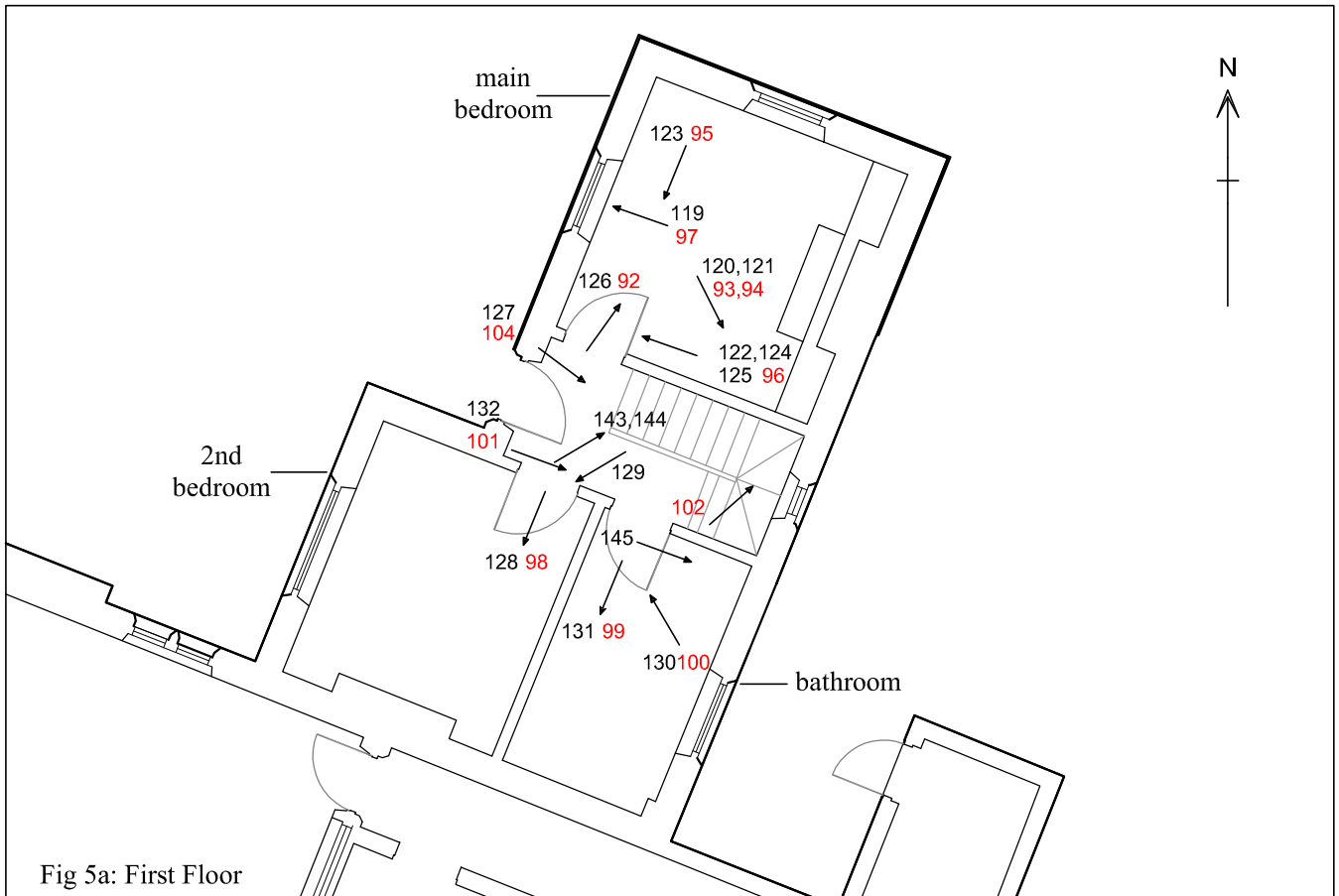
0 10 Metres

John Buglass Archaeological Services

Selby Abbey School

Scale 1:200 @ A4

Figure 4: Infant School photographic survey



0 5 Metres

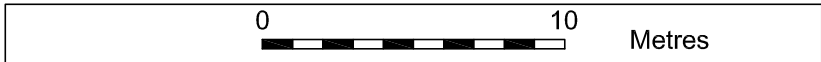
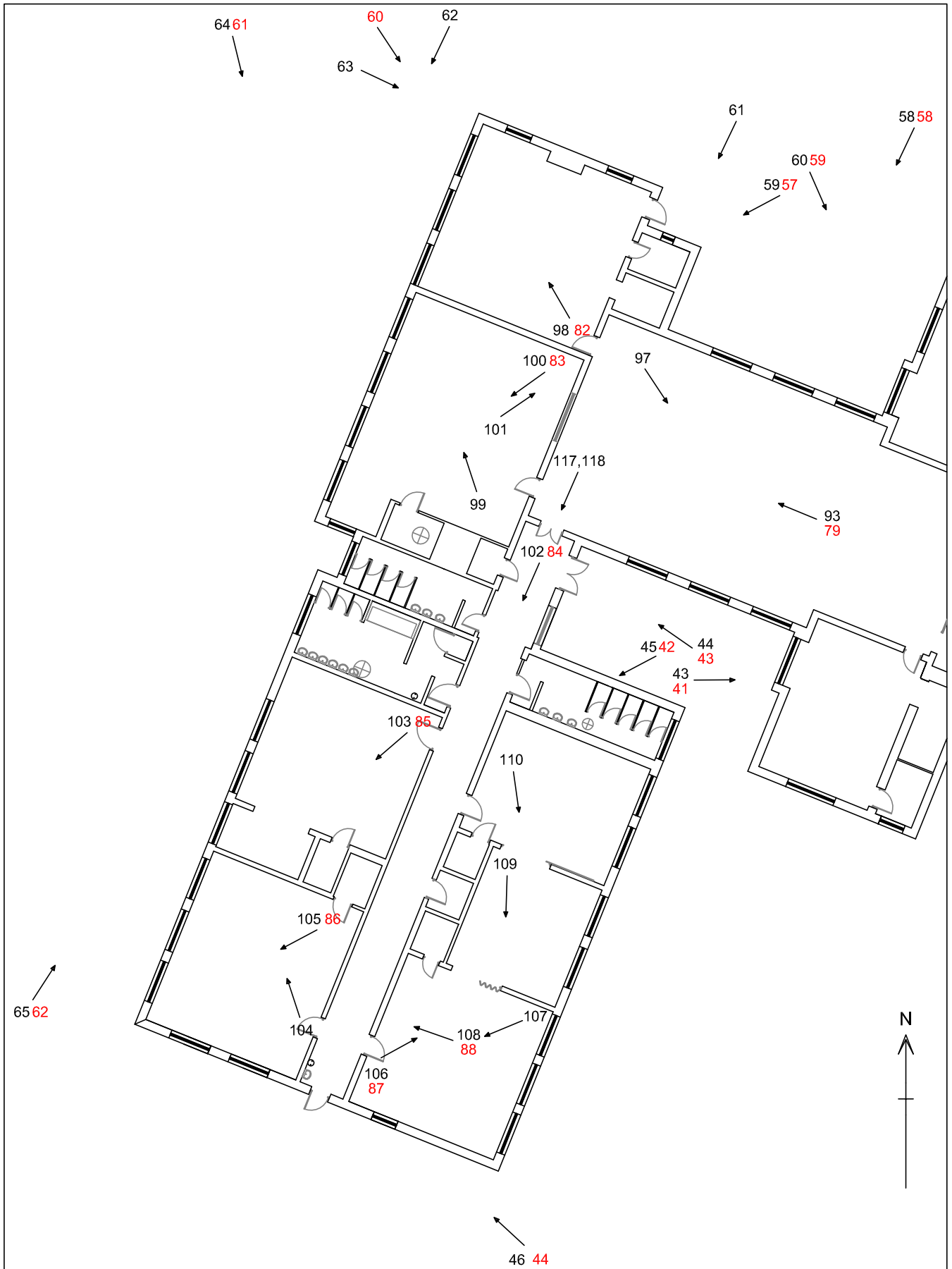
John Buglass Archaeological Services

Selby Abbey School

Scale 1:100 @ A4

Figure 5: School Mistress' House, photographic survey

00 B / W print image
00 Digital image



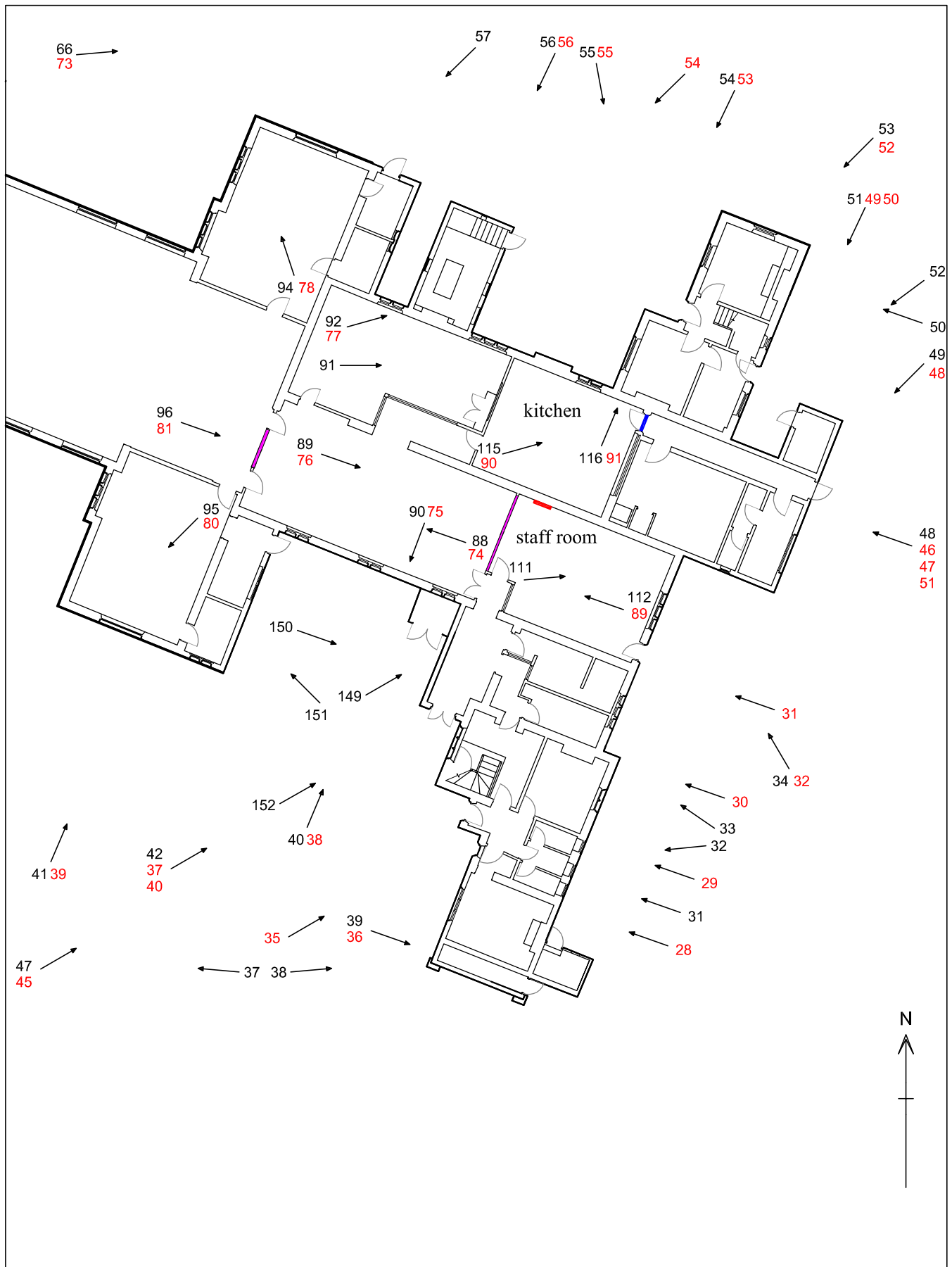
John Buglass Archaeological Services

Selby Abbey School

Scale 1:250 @ A4

Figure 6: Senior Classrooms photographic survey

00 B / W print image
00 Digital image



- Cast iron radiator
- Original glazing
- Gothic door
- 00 B / W print image
- 00 Digital image

0

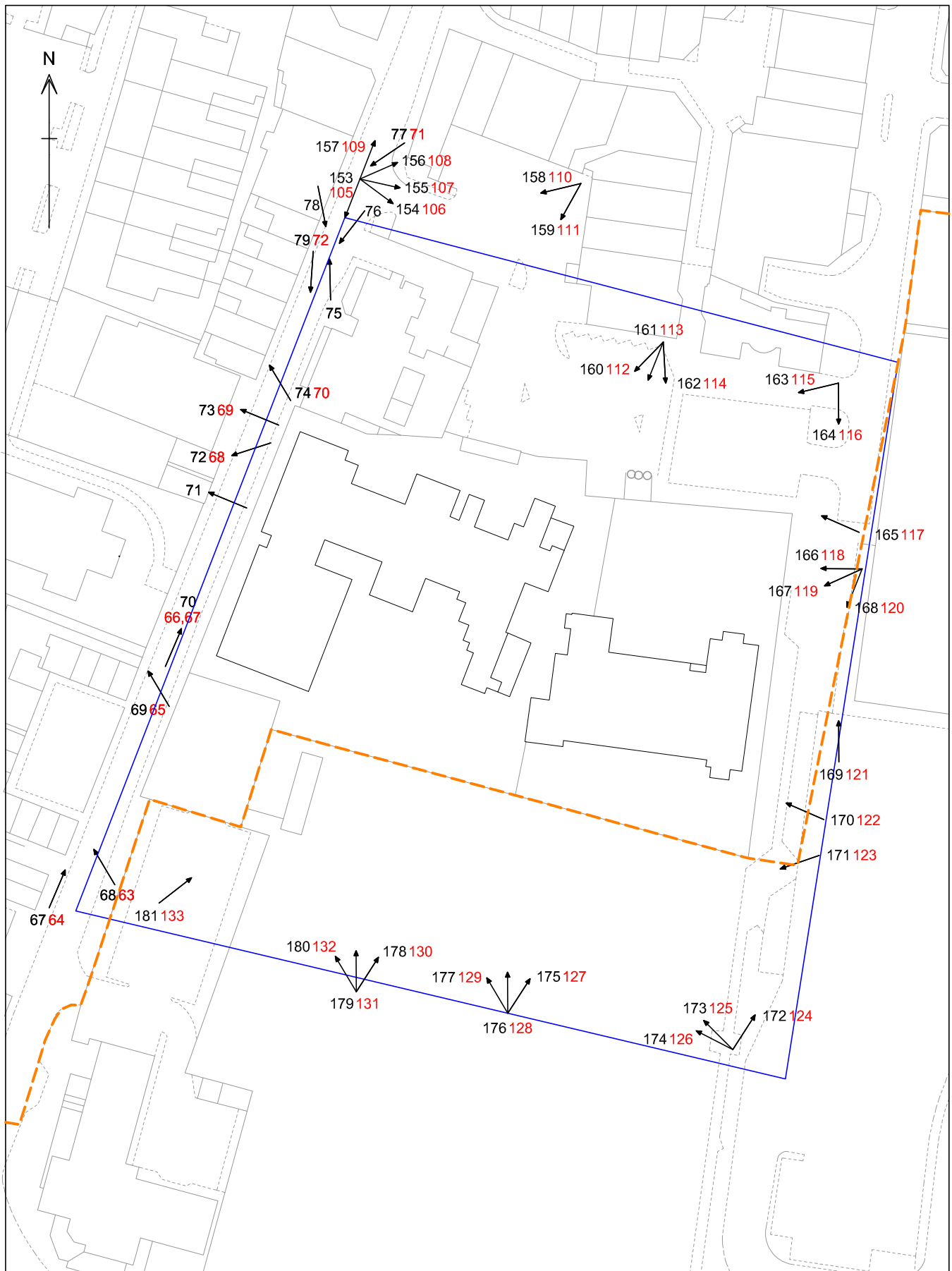
 10 Metres

John Buglass Archaeological Services

Selby Abbey School

Scale 1:250

Figure 7: National School
photographic survey



0 50 Metres

John Buglass Archaeological Services

Selby Abbey School

Scale 1:1000 @ A4

Figure 8: Conservation Area photographic survey

- Photographic survey area
- - - Conservation boundary
- 00 B / W print image
- 00 Digital image