



Plate 20. Tr 42, timber structure 4219/4226



Plate 21. Tr 42, timber piles 4222 and beams 4213/4214





*Plate 22. Timber beam and stone surface to the west of tr 42.*





*Plate 23. Tr 42, paved floor 4211*



*Plate 24. Architectural fragments retrieved from 4211.*





Plate 25. Tr 40, north retaining wall beneath road bridge.



Plate 26. Collapsing arched underside of the road bridge.





*Plate 27. Tr 20, wall 2025*





Plate 28. Tr 20, cobbles 2014 and 2016, kerb 2015 and surface 2013

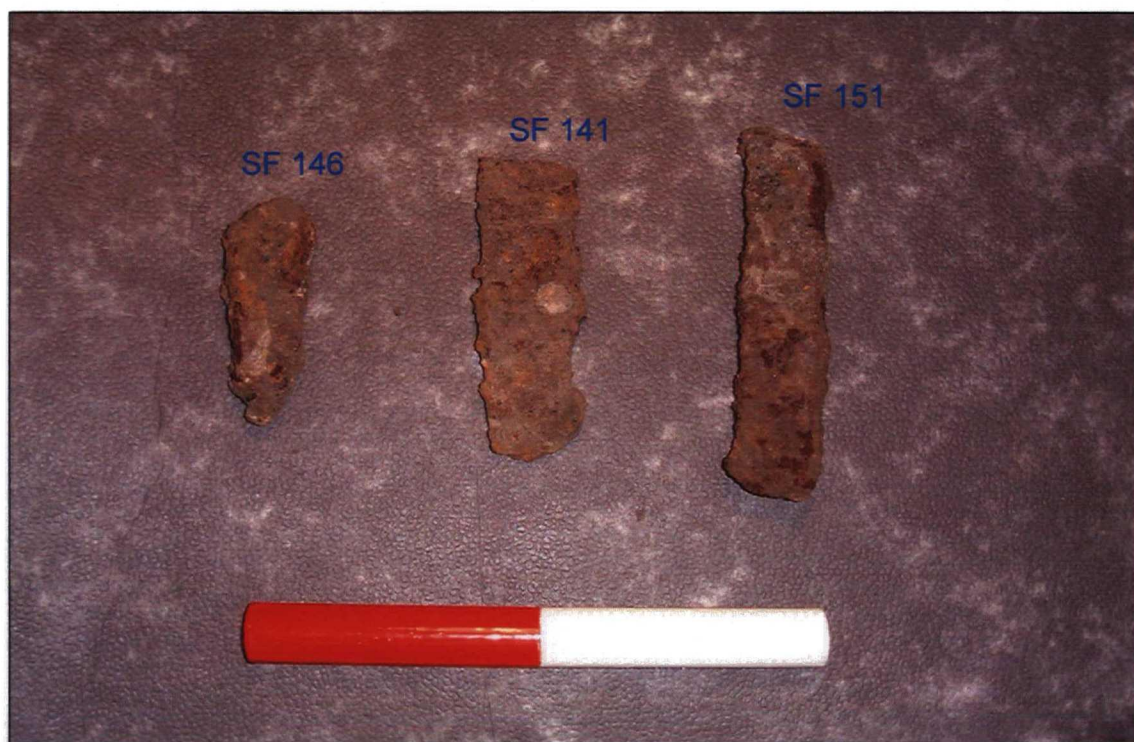


Plate 29. Ferrous SF Nos. 141, 146, 151





Plate 30. Lead window comes, SF Nos. 43, 129, 130.

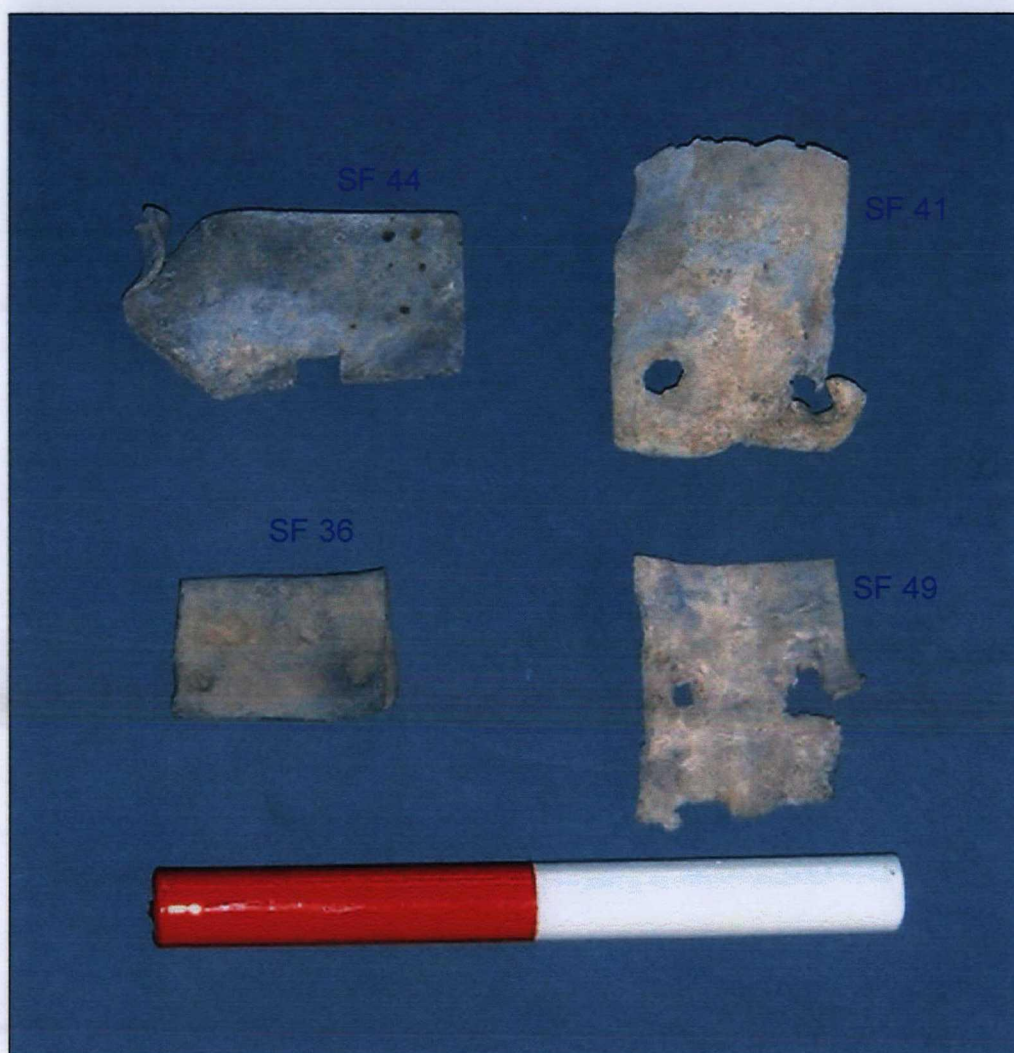


Plate 31. Lead sheet, SF Nos. 36, 41, 44, 49.





Plate 32. Copper alloy and tin, SF Nos. 2, 33, 48



Plate 33. Leather SF Nos. 8, 169