



ARCHAEOLOGICAL
SERVICES
WYAS

**East Moor Pipeline
North Yorkshire**

Geophysical Survey

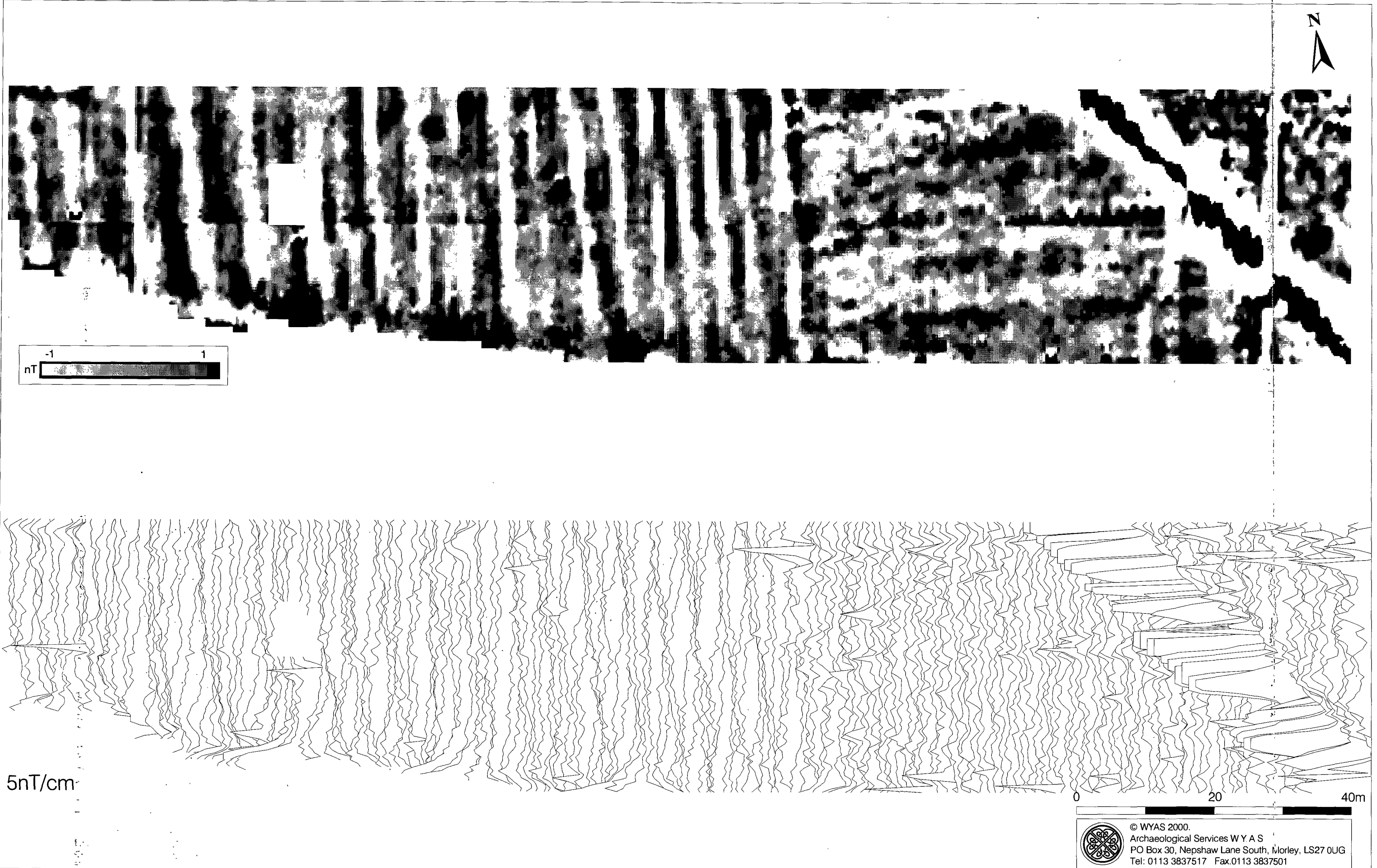
Volume II

June 2000

Report No. 809

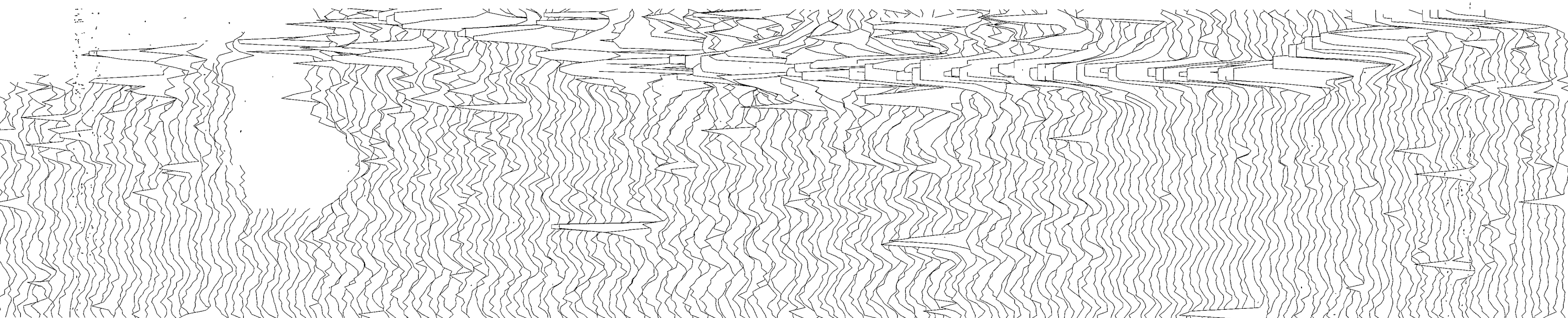
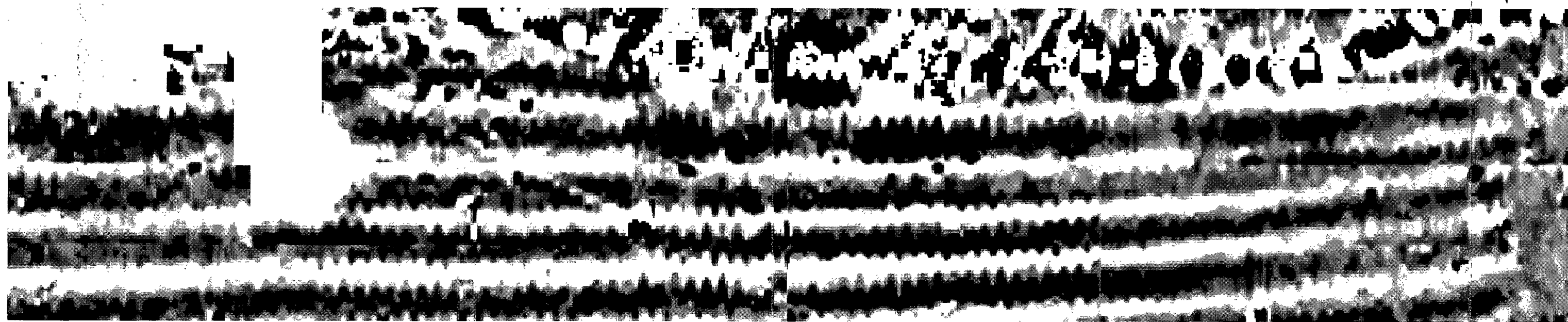
CLIENT
Northern Archaeological Associates

NYCC HER	
SNY	548
ENY	¹²⁹ 3329-3334
CNY	1649/1709
Parish	3097
Rec'd	04/08/2000



Greyscale (top) and X-Y trace plot (bottom) of gradiometer data; Site 2 (1:500)

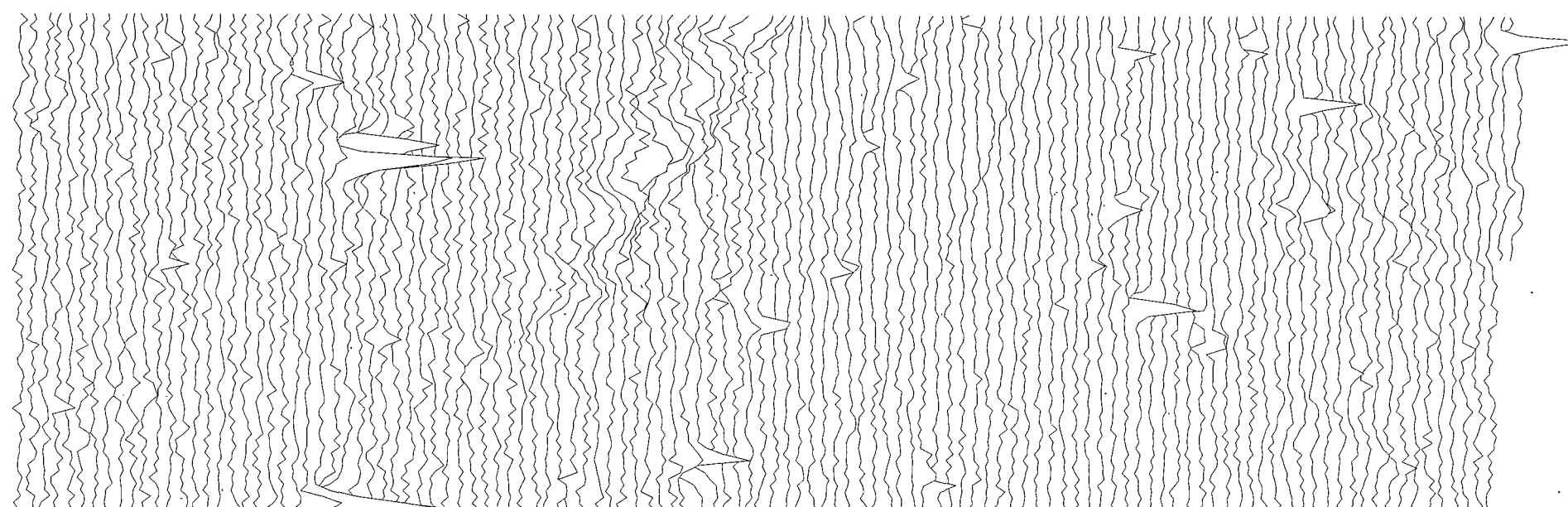
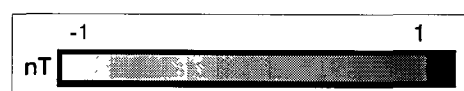
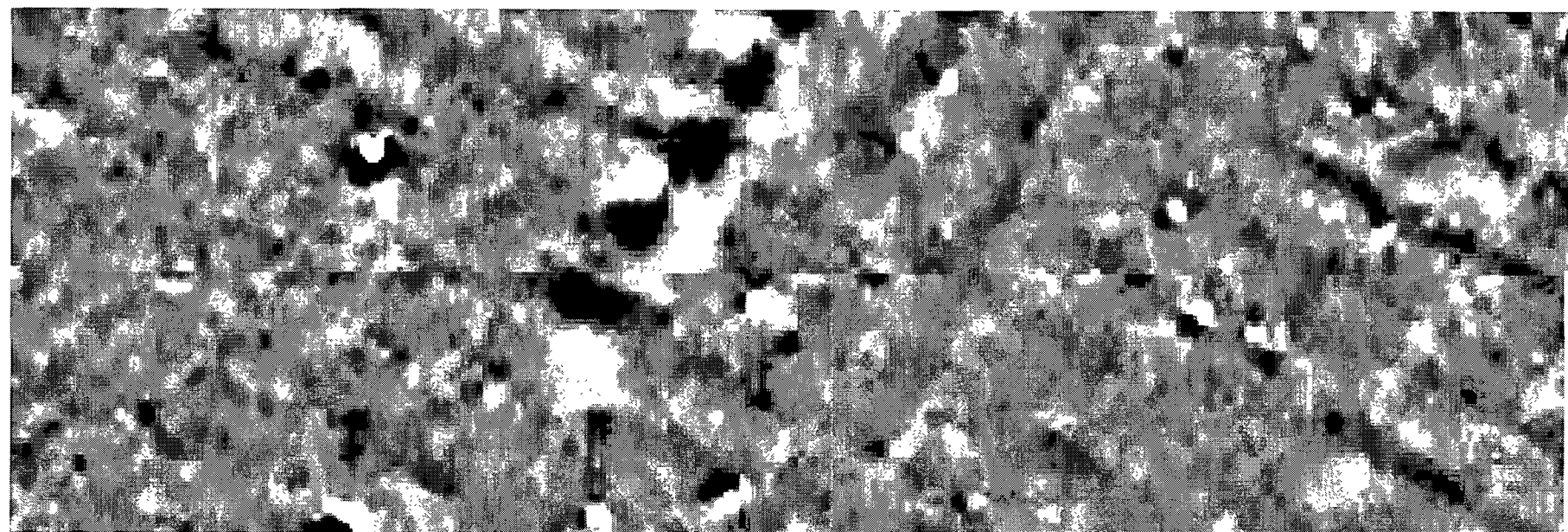
© WYAS 2000.
Archaeological Services W.Y.A.S.
PO Box 30, Nepshaw Lane South, Morley, LS27 0UG
Tel: 0113 3837517 Fax: 0113 3837501



5nT/cm

© WYAS 2000.
Archaeological Services WYAS
PO Box 30, Nepshaw Lane South, Morley, LS27 0UG
Tel. 0113 3837517 Fax: 0113 3837501

Greyscale (top) and X-Y trace plot (bottom) of gradiometer data; Site 9A (1:500)



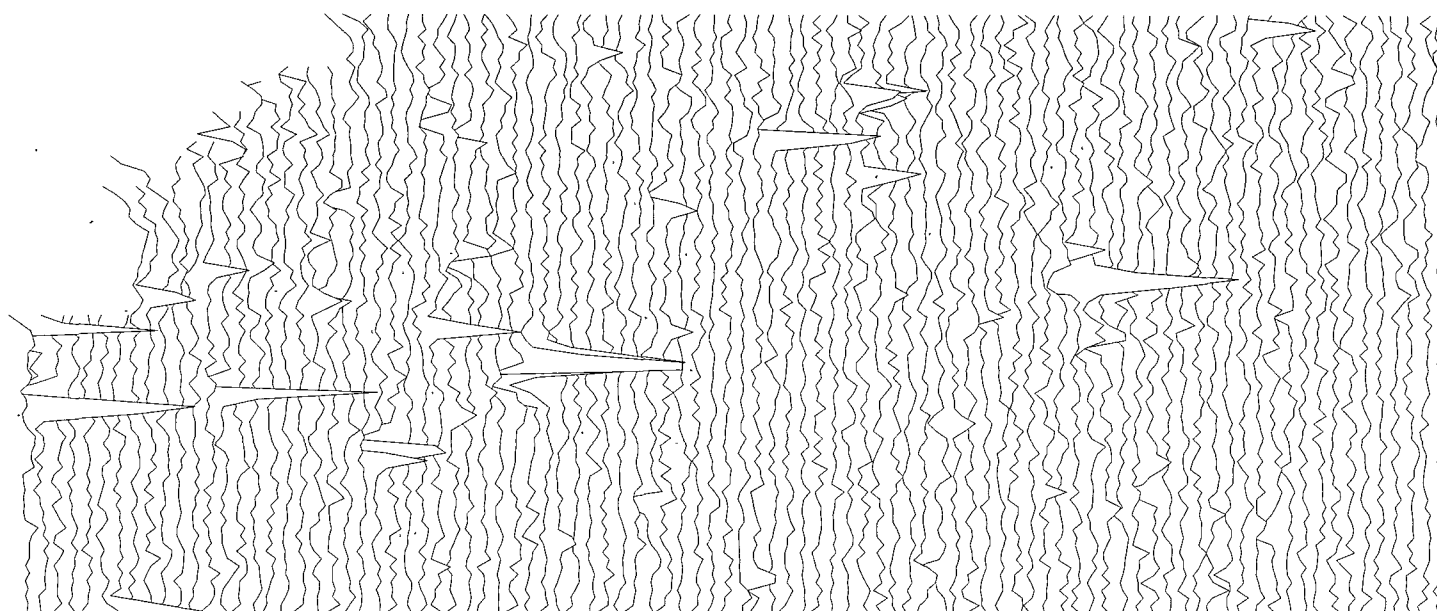
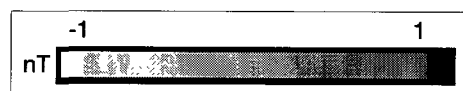
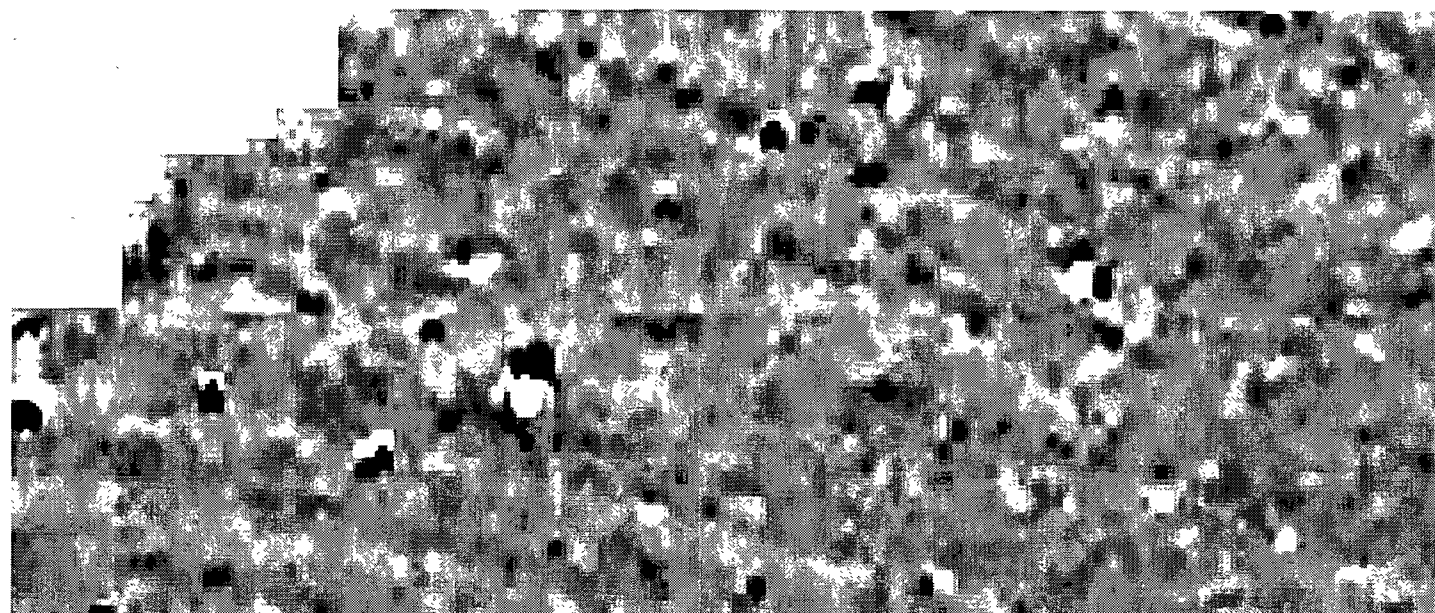
5nT/cm

0 20 40m



© WYAS 2000
 Archaeological Services W.Y.A.S
 PO Box 30, Nepshaw Lane South, Morley, LS27 0UG
 Tel. 0113 3837517 Fax:0113 3837501

Greyscale (top) and X-Y trace plot (bottom) of gradiometer data; Site 9B, north-eastern end (1:500)



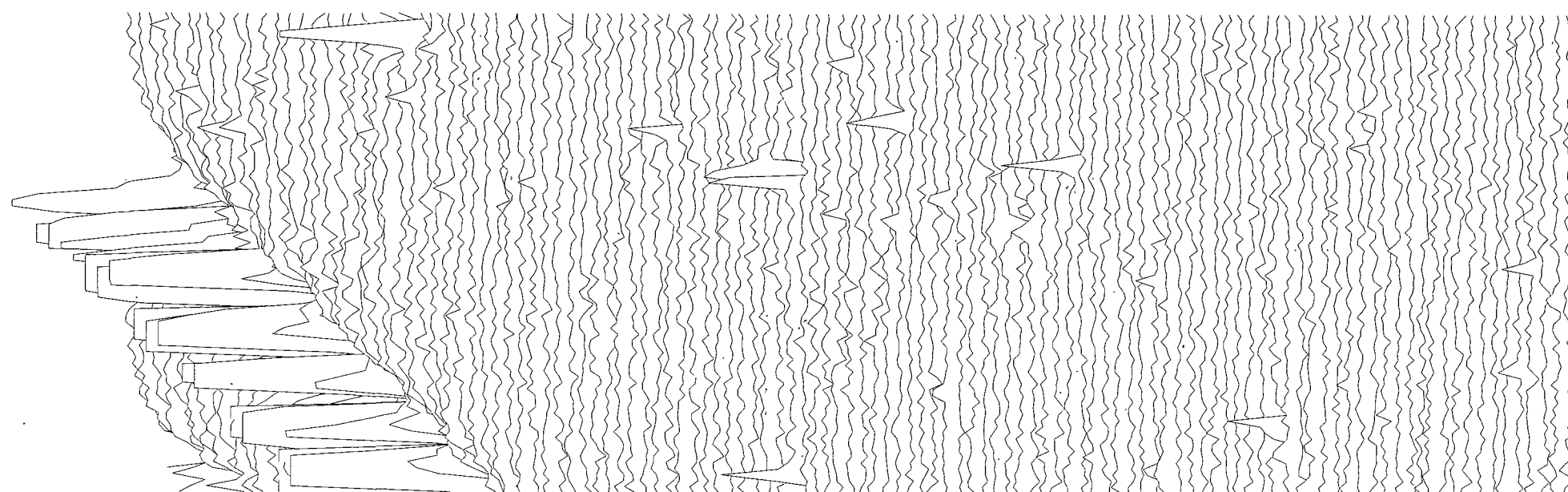
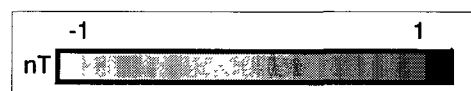
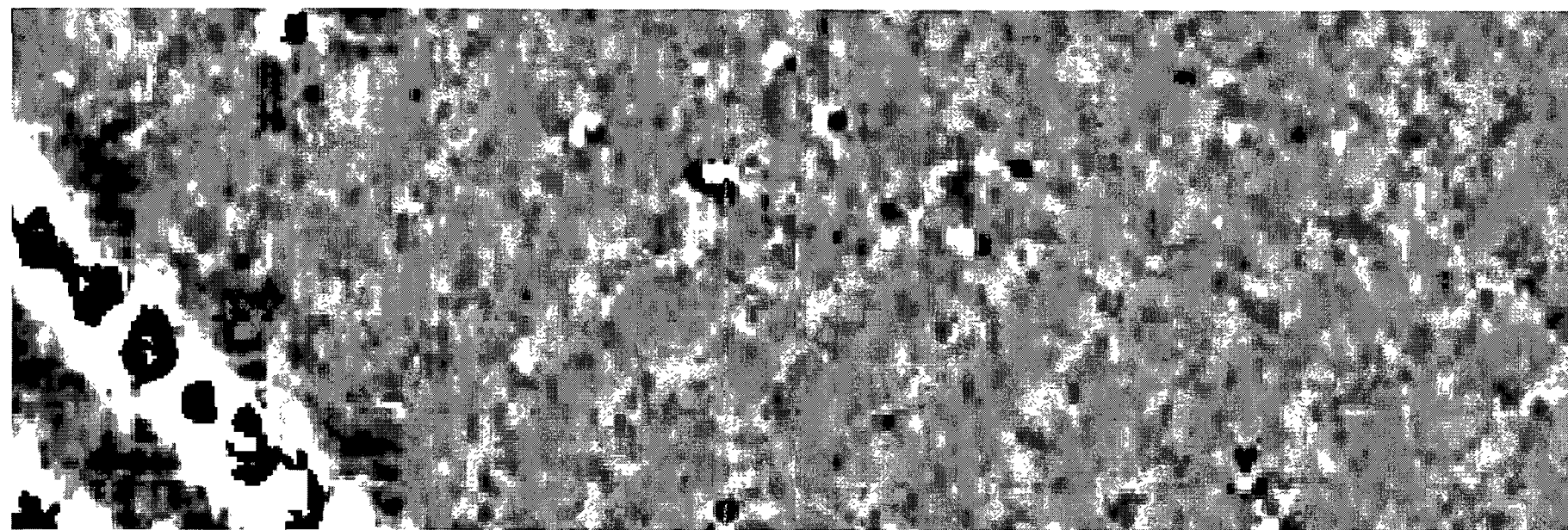
5nT/cm

0 20 40m



© WYAS 2000.
Archaeological Services W Y A S
PO Box 30, Nepshaw Lane South, Morley, LS27 0UG
Tel: 0113 3837517 Fax: 0113 3837501

Greyscale (top) and X-Y trace plot (bottom) of gradiometer data; Site 9B, south-western end (1:500)



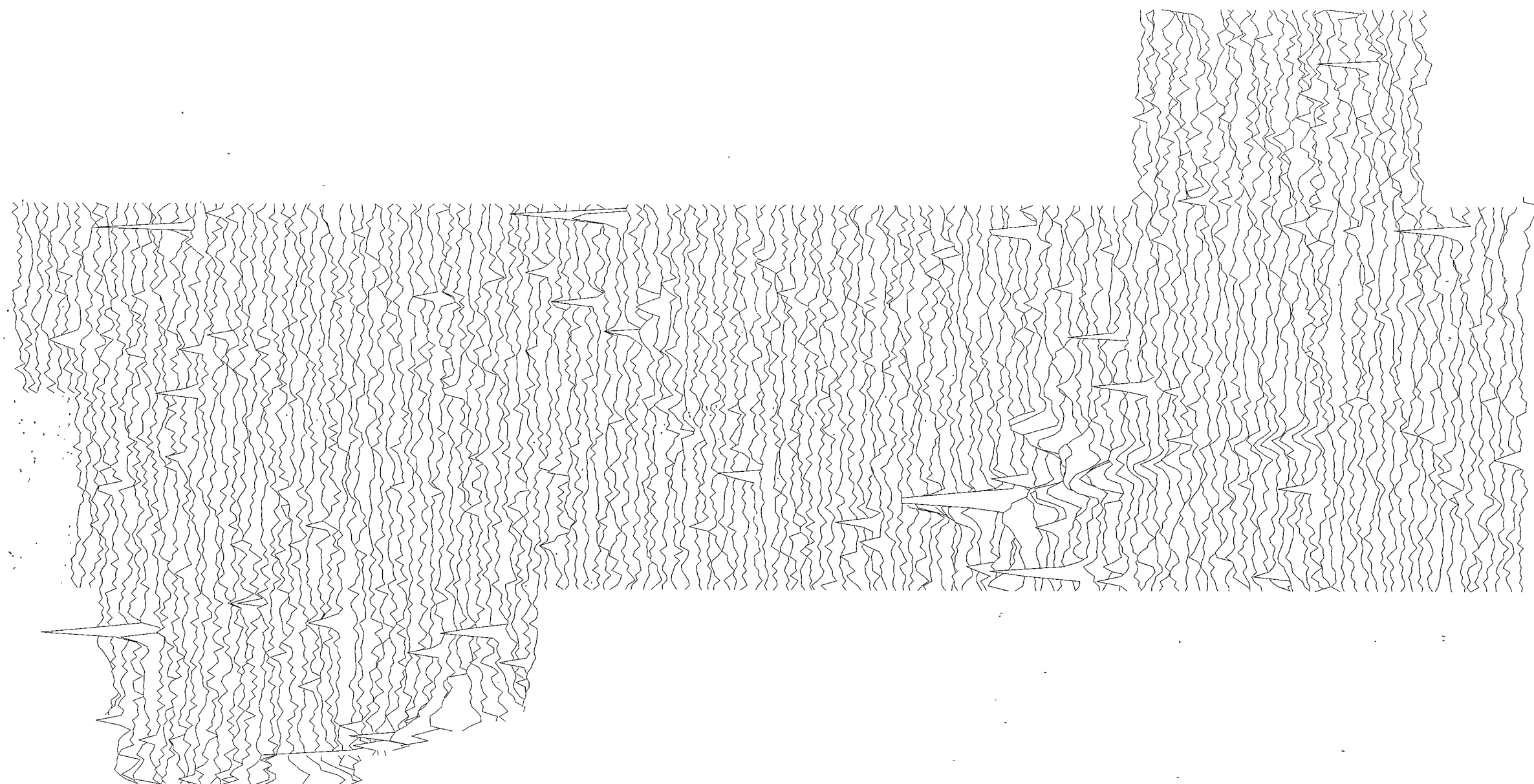
5nT/cm

0 20 40m



© WYAS 2000.
Archaeological Services W Y A S
PO Box 30, Nepshaw Lane South, Morley, LS27 0UG
Tel: 0113 3837517 Fax: 0113 3837501

Greyscale (top) and X-Y traceplot (bottom) of gradiometer data; Site 10, north-western end (1:500)

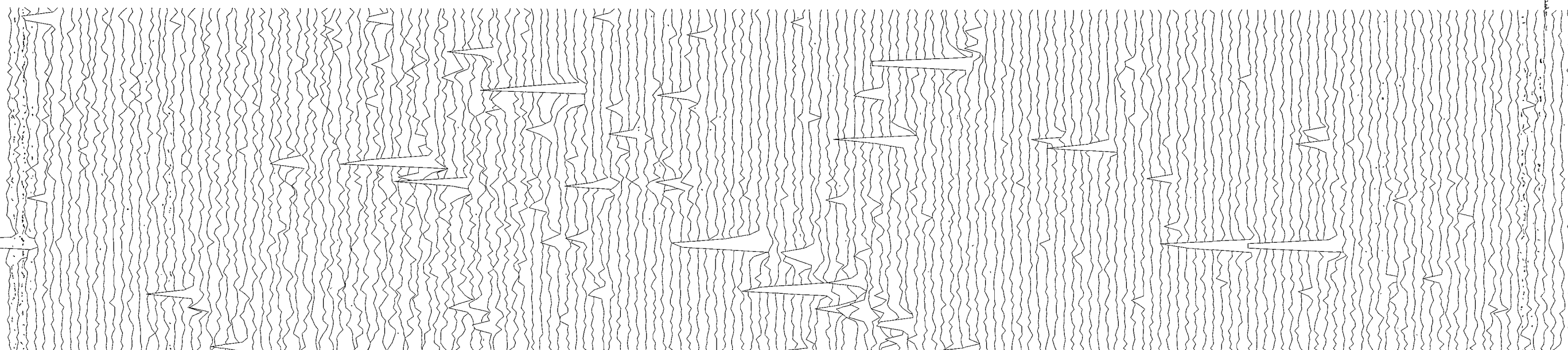
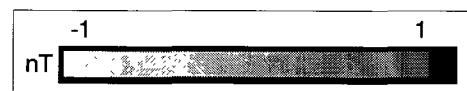
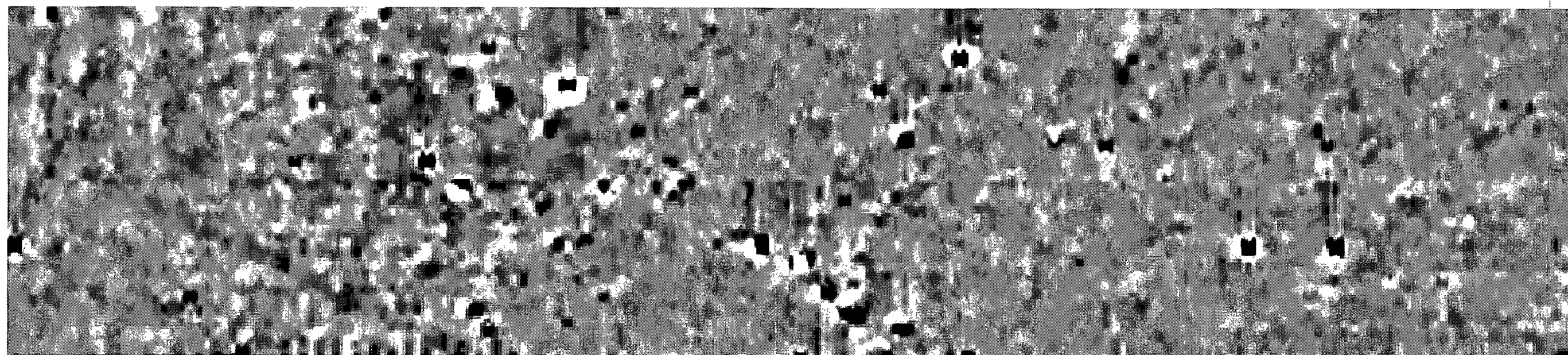


5nT/cm

0 20 40m



© WYAS 2000.
Archaeological Services W.Y.A.S.
PO Box 30, Nepshaw Lane South, Morley, LS27 0UG
Tel: 0113 3837517 Fax: 0113 3837501



5nT/cm

0 20 40m



© WYAS 2000
Archaeological Services W Y A S
PO Box 30, Nepshaw Lane South, Morley, LS27 0UG
Tel: 0113 3837517 Fax: 0113 3837501

Greyscale (top) and X-Y trace plot (bottom) of gradiometer data; Site 10, south-eastern end (1:500)