

Figure 1. Site Location.

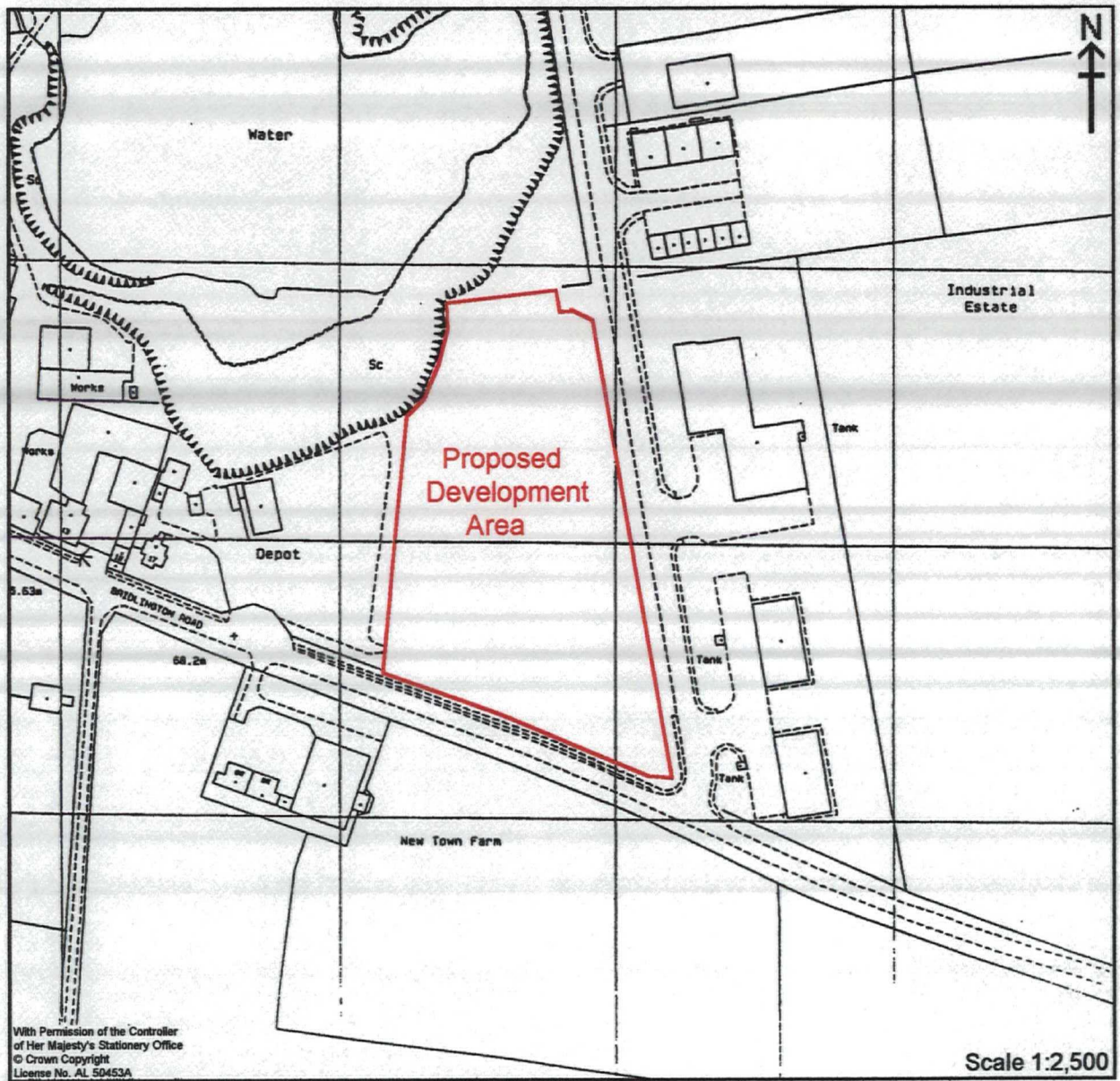


Figure 2. Proposed Development Area.

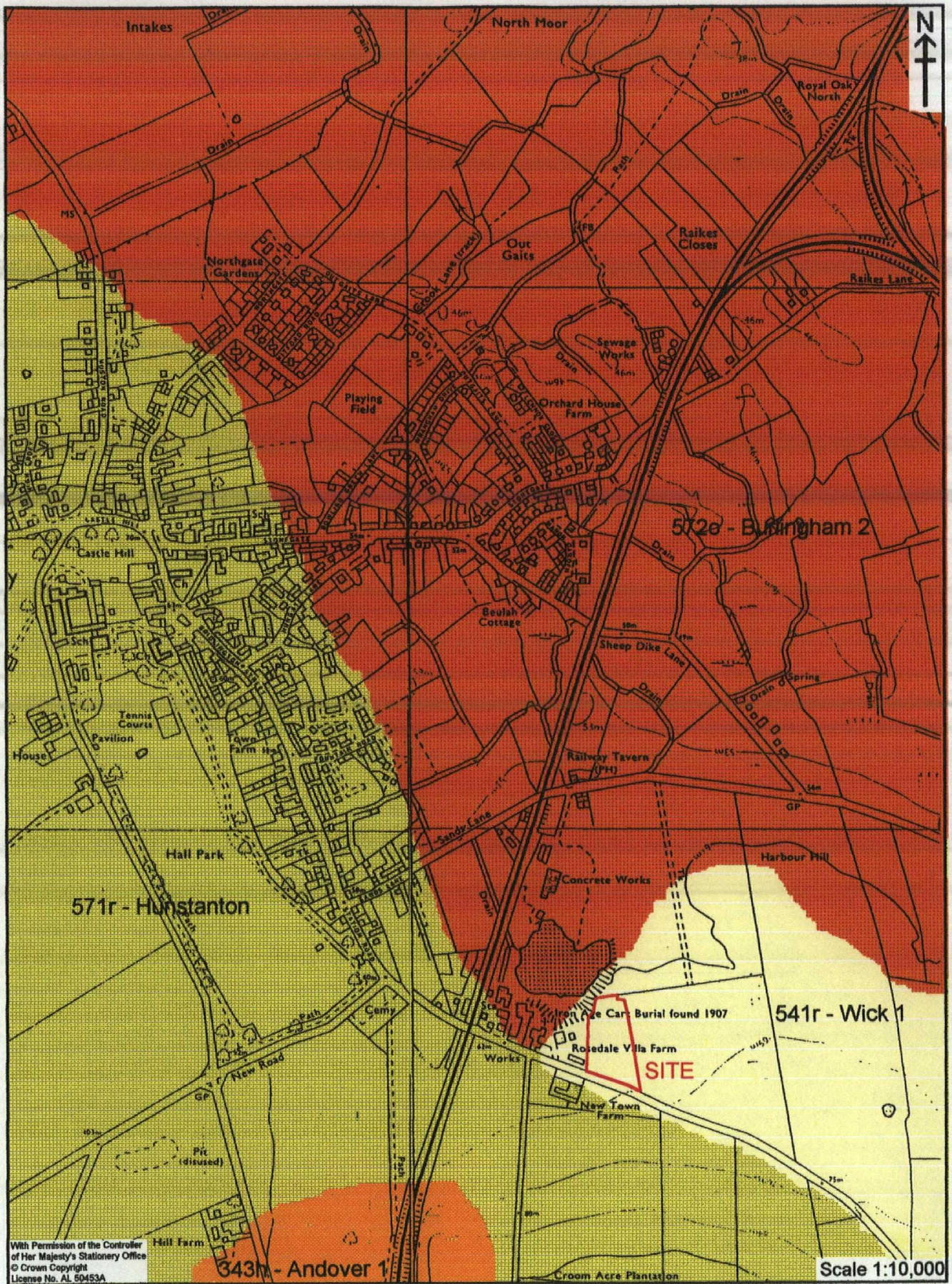


Figure 3. Geological Soil Map.

Machney et al 1983 Sheet 1

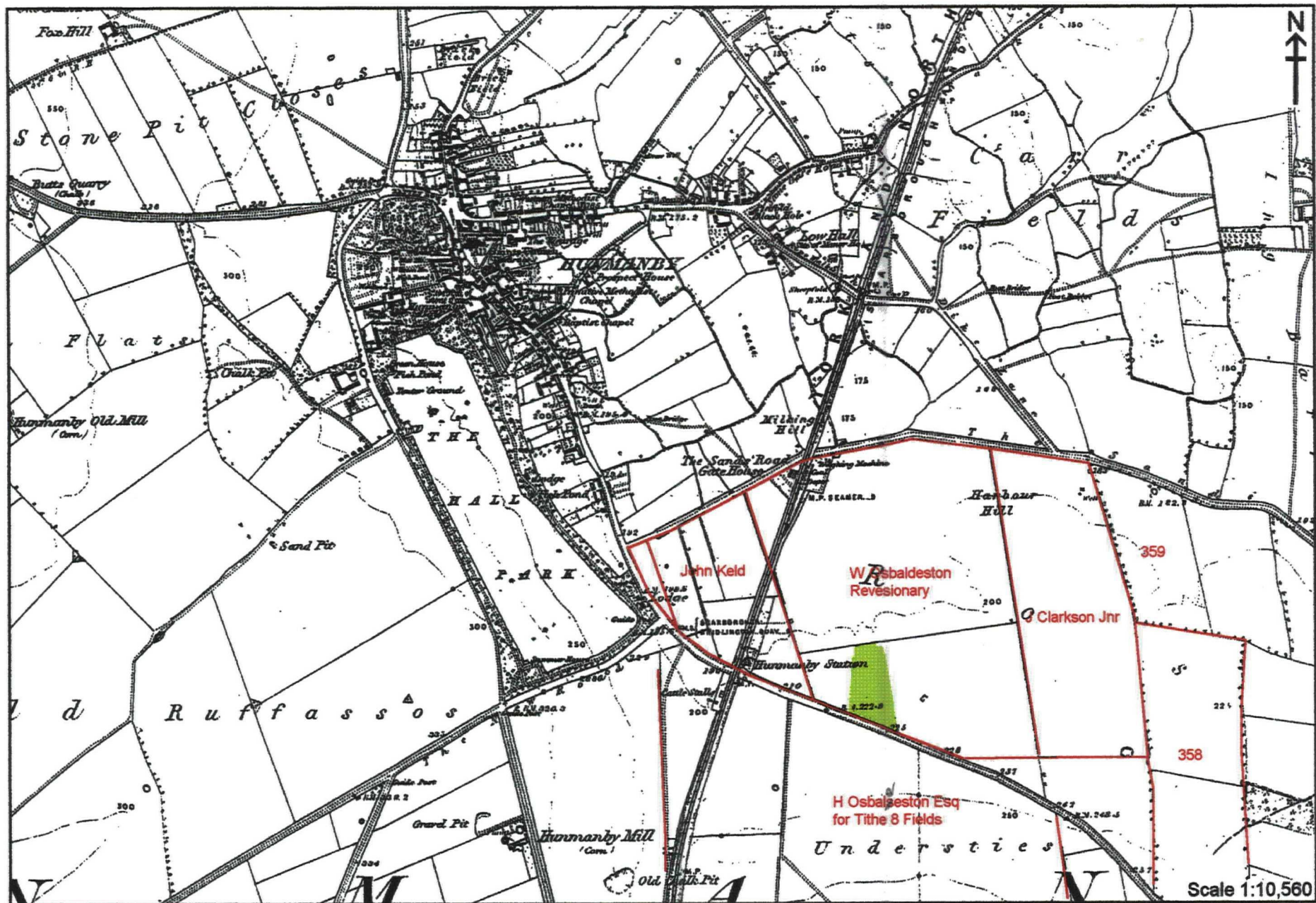


Figure 4. Enclosure Award Plan, 1809.



Figure 5. Extract from the First Edition Ordnance Survey Map, 1849-50.

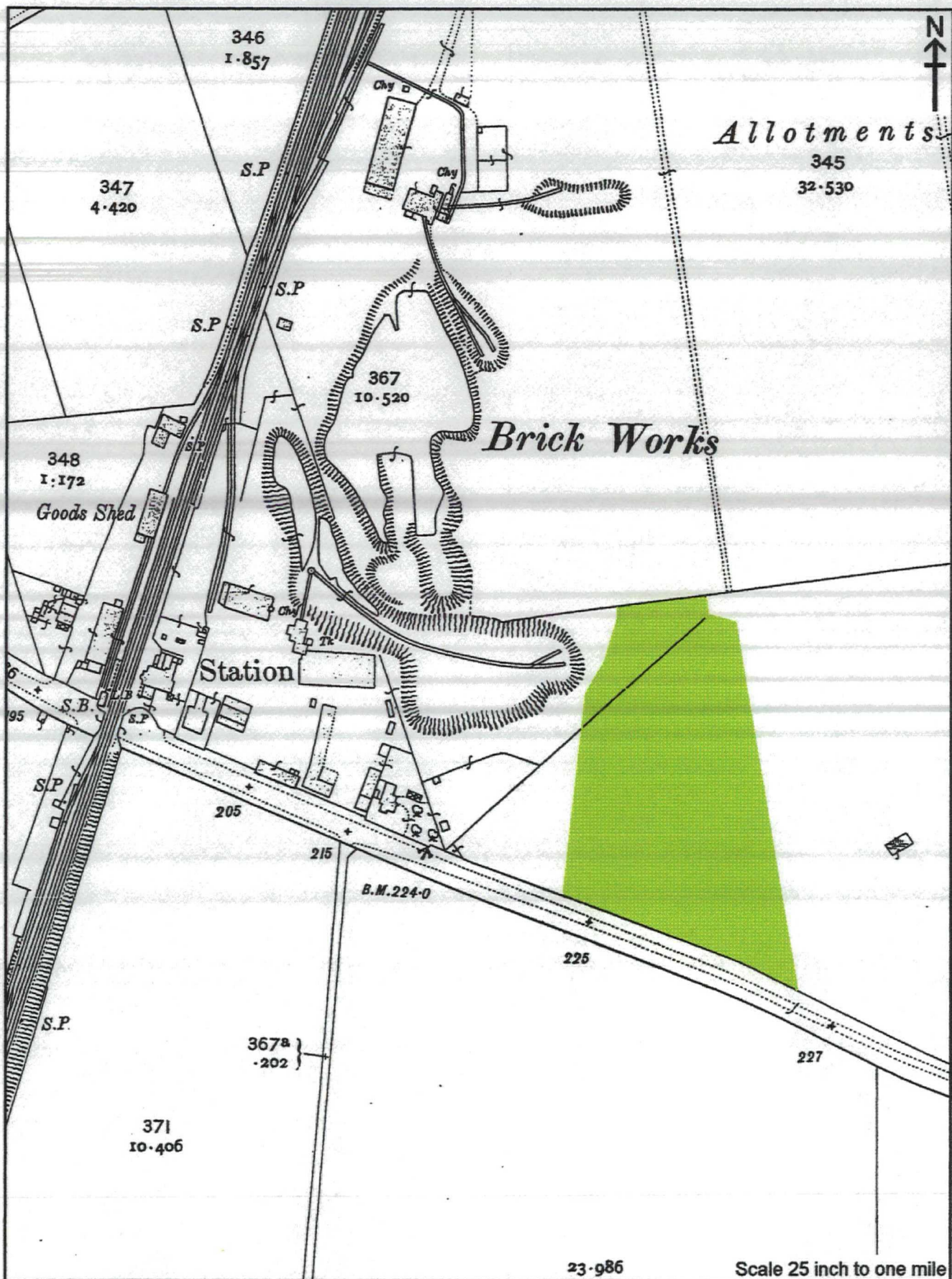


Figure 6. Extract from the Ordnance Survey County Series Map, 1911.

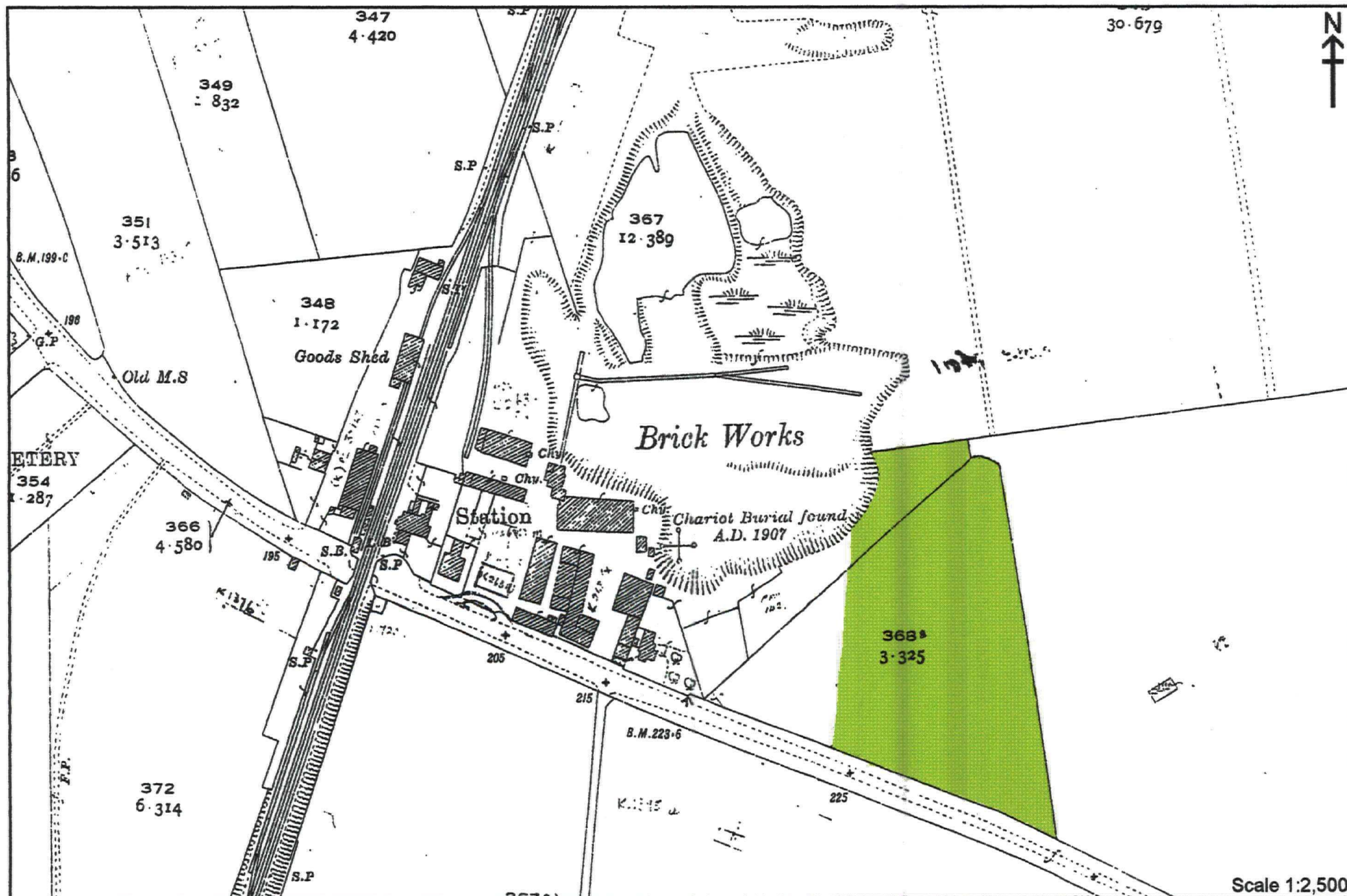


Figure 7. Extract from the Ordnance Survey Map, 1928.



With Permission of the Controller  
 of Her Majesty's Stationery Office  
 © Crown Copyright  
 License No. A1 50653A

Figure 8. Extract from the Ordnance Survey Map, 1958.

Scale 1:10,560



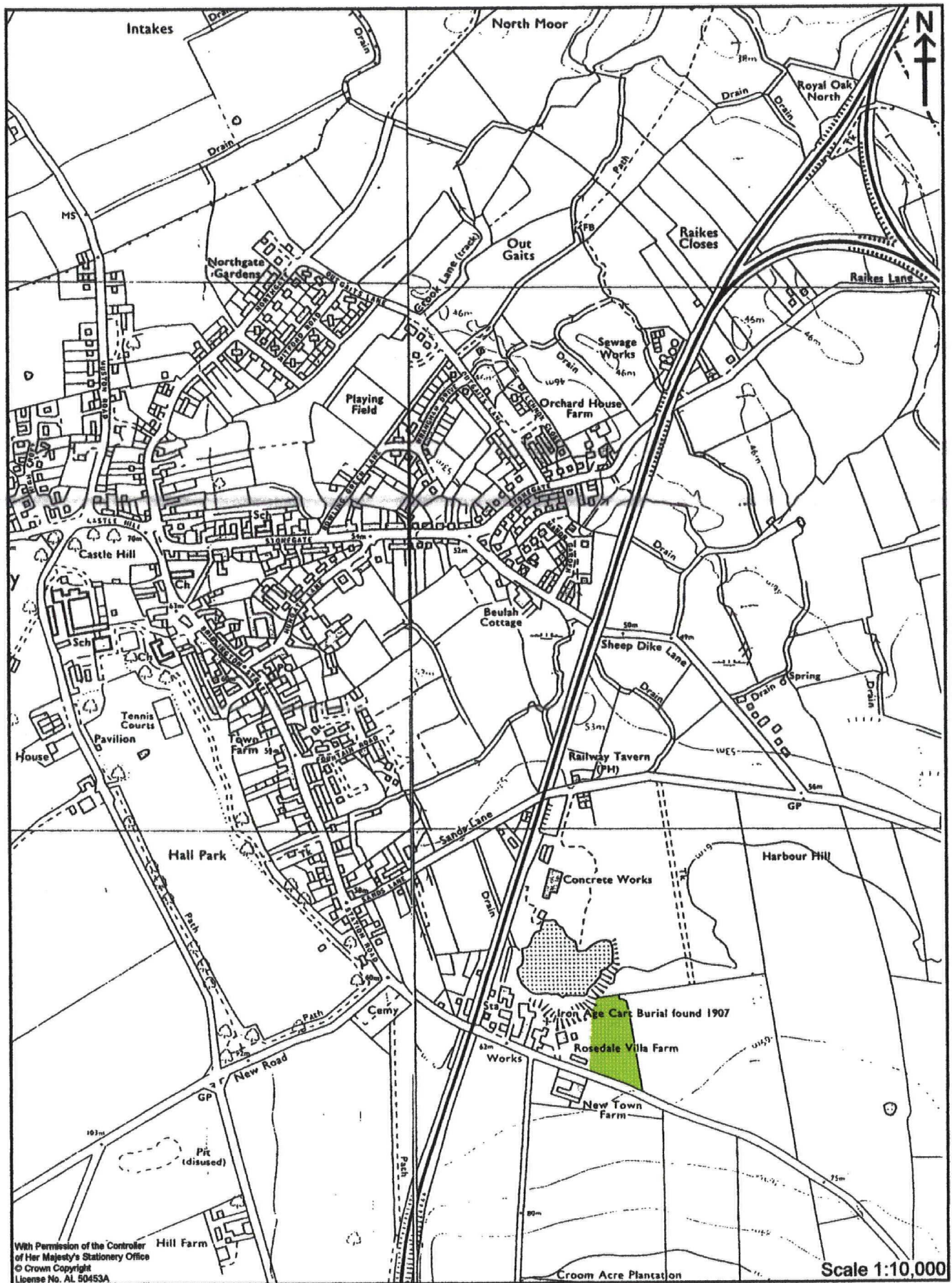


Figure 9. Extract from the Ordnance Survey Map, 1973.

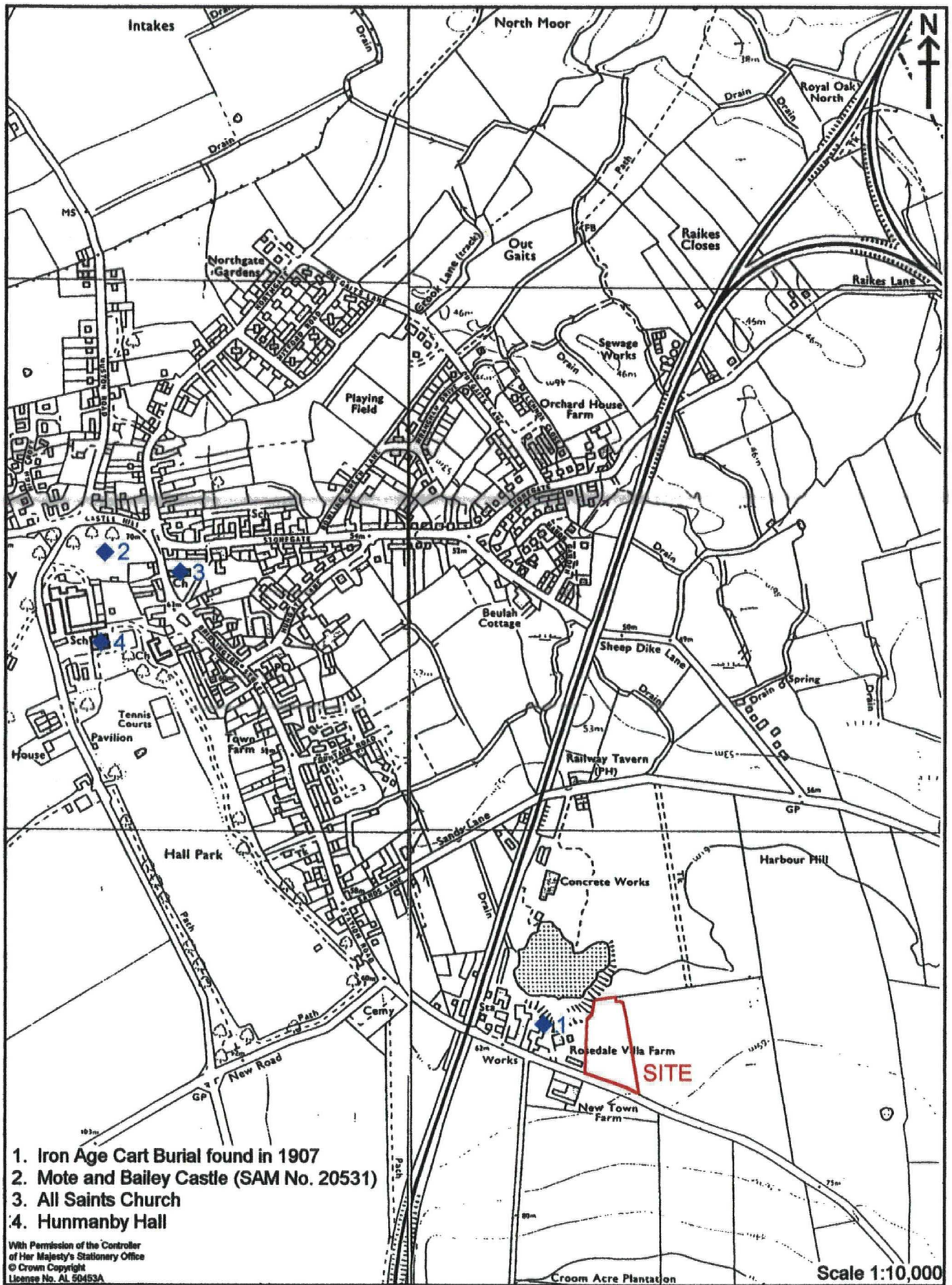


Figure 10. Archaeological Sites.

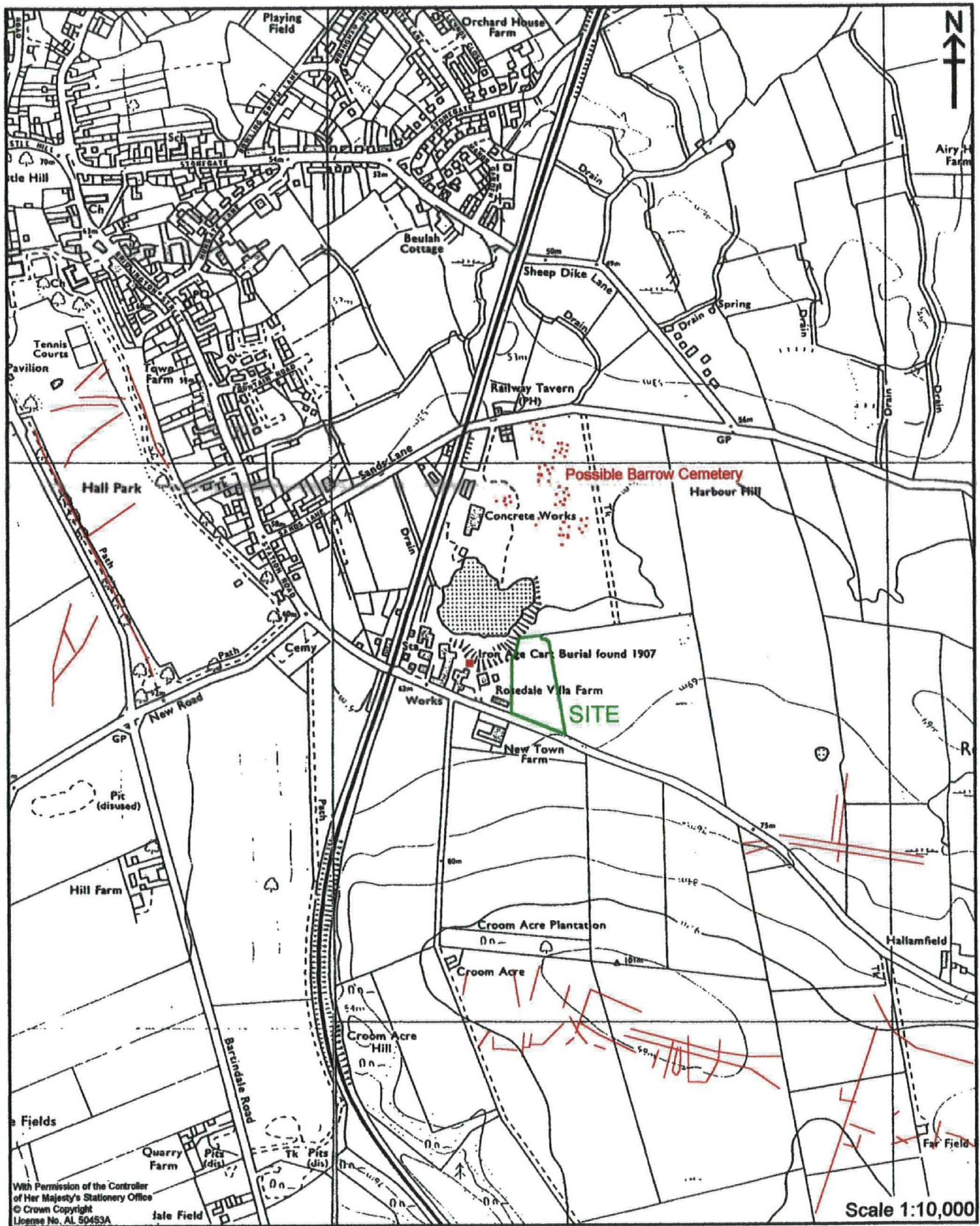


Figure 11. Aerial Photographic Coverage.

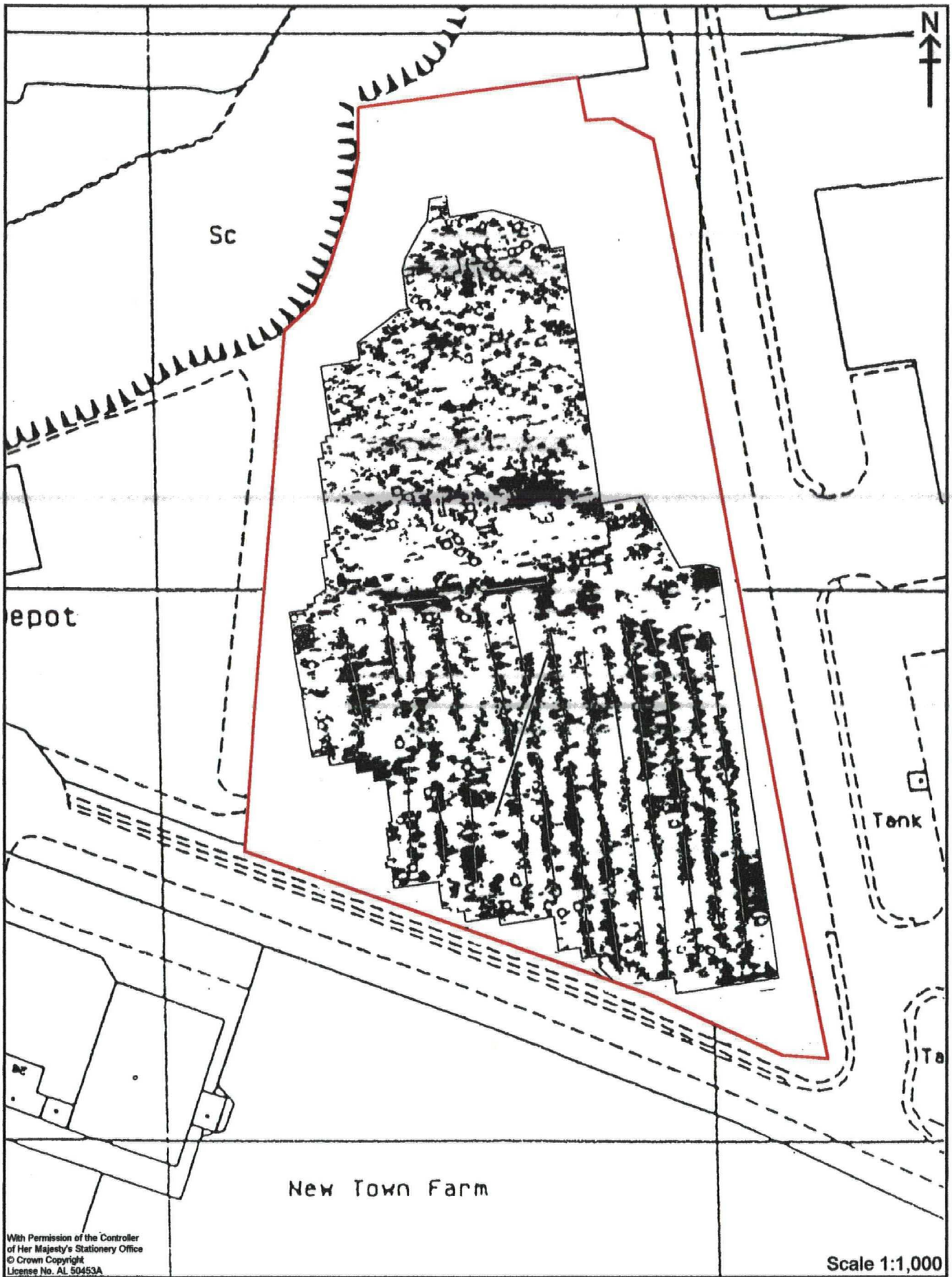


Figure 12. Geophysical Survey Results.

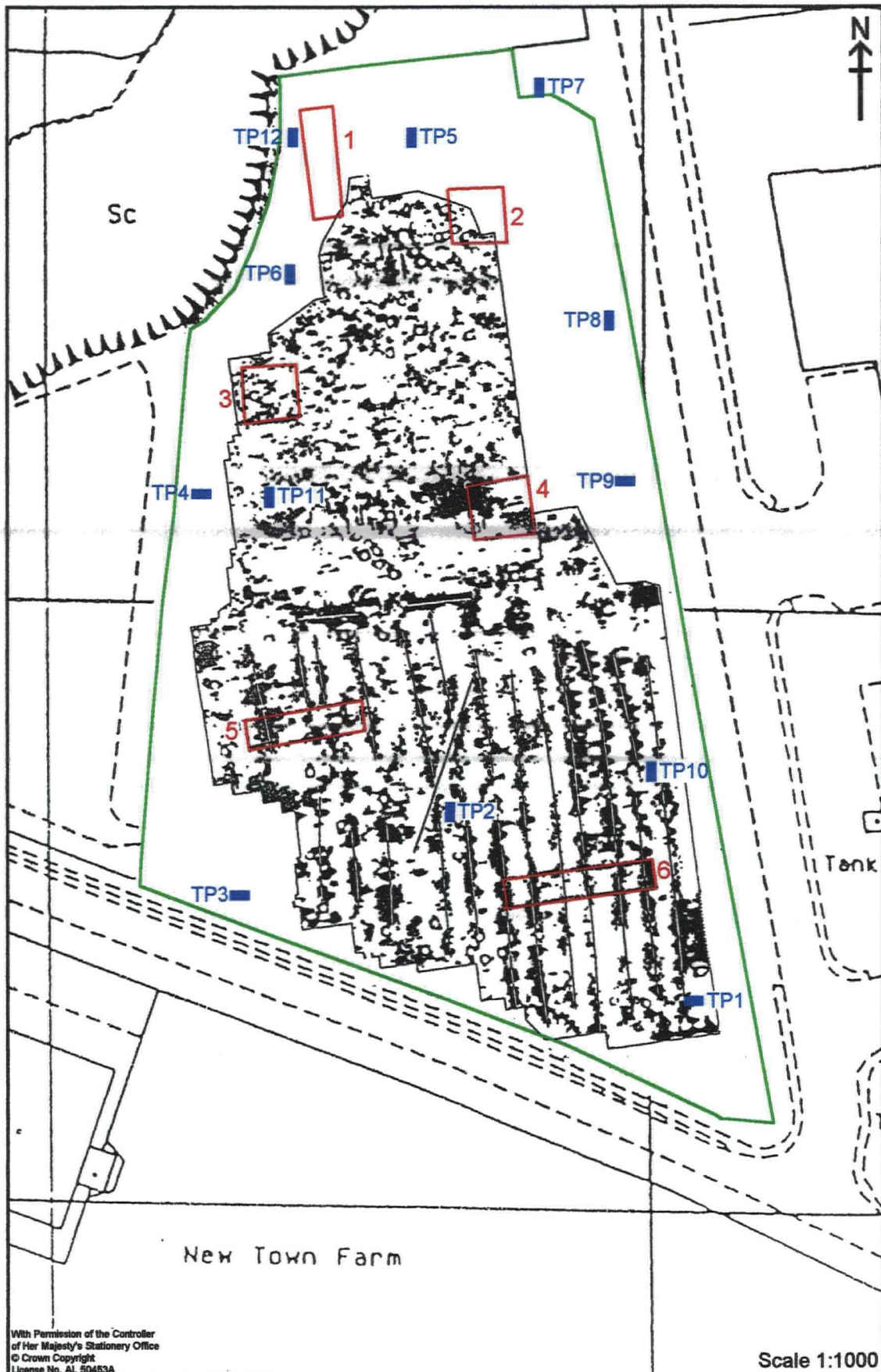


Figure 13. Trial Trench and Testpit Location Plan.

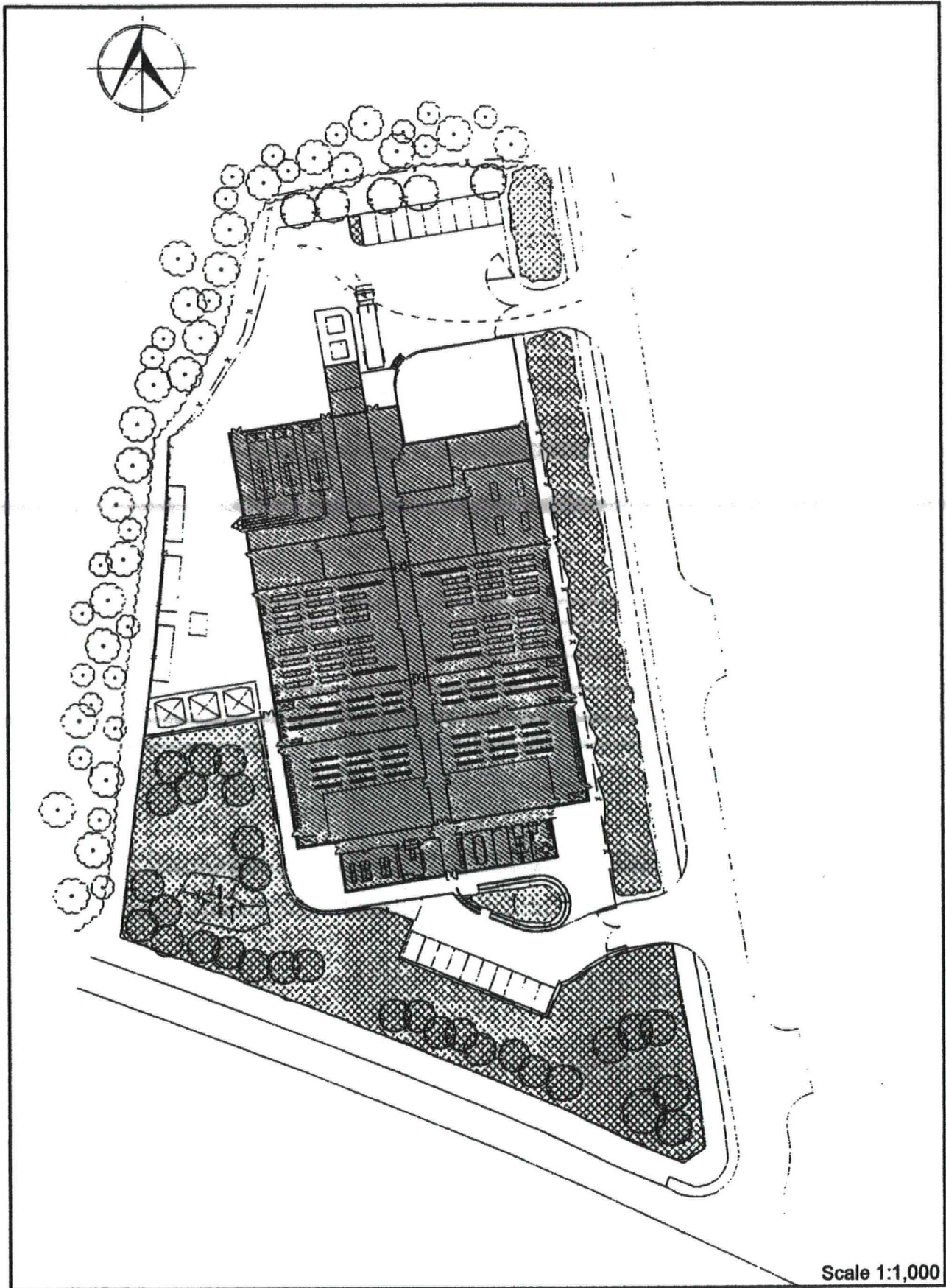


Figure 14. Proposed Development Plan.

## APPENDIX 1

### Context Listing

Context No.	Description
-------------	-------------

#### Trench 1

1001	Deposit, 10 YR 4/2, sandy loam; modern topsoil
1002	Deposit, 10 YR 4/6, sl. sandy silt; hillwash
1003	Deposit, 10 YR 5/6, gravelly sand; 10 YR 3/2, clay loam; natural

#### Trench 2

2001	Deposit, 10 YR 3/2, clay loam; modern topsoil
2002	Deposit, 10 YR 6/3, clay; 10 YR 3/1 peat; natural

#### Trench 3

3001	Deposit, 10 YR 3/2, clay loam; modern topsoil
3002	Deposit, 10 YR 4/1, silty clay; hillwash
3003	Deposit, 10 YR 3/1, clay; natural

#### Trench 4

4001	Deposit, 10 YR 3/2, clay loam; modern topsoil
4002	Modern field drains
4003	Deposit, 10 YR 5/3, silty clay; hillwash
4004	Deposit, 10 YR 6/4, sl. silty clay

#### Trench 5

5001	Deposit, 10 YR 3/2, sandy loam; modern topsoil
5002	Deposit, 10 YR 3/4, sandy silt; hillwash
5003	Deposit, 10 YR 4/6, gravel in silty sand matrix; natural

#### Trench 6

6001	Deposit, 10 YR 3/2, silty loam; modern topsoil
6002	Deposit, 10 YR 4/3, clay silt; hillwash
6003	Deposit, 10 YR 5/4, sandy silt with 20% gravel and cobbles; natural

## APPENDIX 2

### Finds Catalogue

Context No.	Category	Description
1002	Flint	1 flake. Percussion bulb. Cortex remnant. Dark grey flint.
3002	Flint	5 flakes. Primary flakes. 1 cortex remnant. Mottled brown flint.
6001	Flint	1 thumbnail scraper. Damage to left and right laterals. Cortex remnant. Mottled grey flint. Partial secondary working to distal.
6002	Flint	4 flakes. 1 with percussion bulb. 3 brown flint; 1 mottled grey. 1 core rejuvenation flake with cortex remnant. Mottled brown flint.



## APPENDIX 3

### Archive Summary

18 completed context forms, completed and checked for consistency

## APPENDIX 4

### Photographic Listing

(The following shots were taken in colour print format only)

- 1-4. General Views of the site prior to excavation.

(The following shots were taken in monochrome and colour print, and colour transparency formats)

- 5-6. Trench 1. General shot after cleaning. Facing north  
7-8. Trench 3. General shot after cleaning. Facing north-west  
9-10. Trench 5. General shot after cleaning. Facing west  
11-12. Trench 6. General shot after cleaning. Facing west  
13-14. Trench 4, western half. General shot after cleaning. Facing north-west  
15-16. Trench 4, eastern half. General shot after cleaning. Facing south  
17-18. Trench 2. General shot after cleaning. Facing south