



Plate 1. Aerial View of Wath Quarry. Facing East.



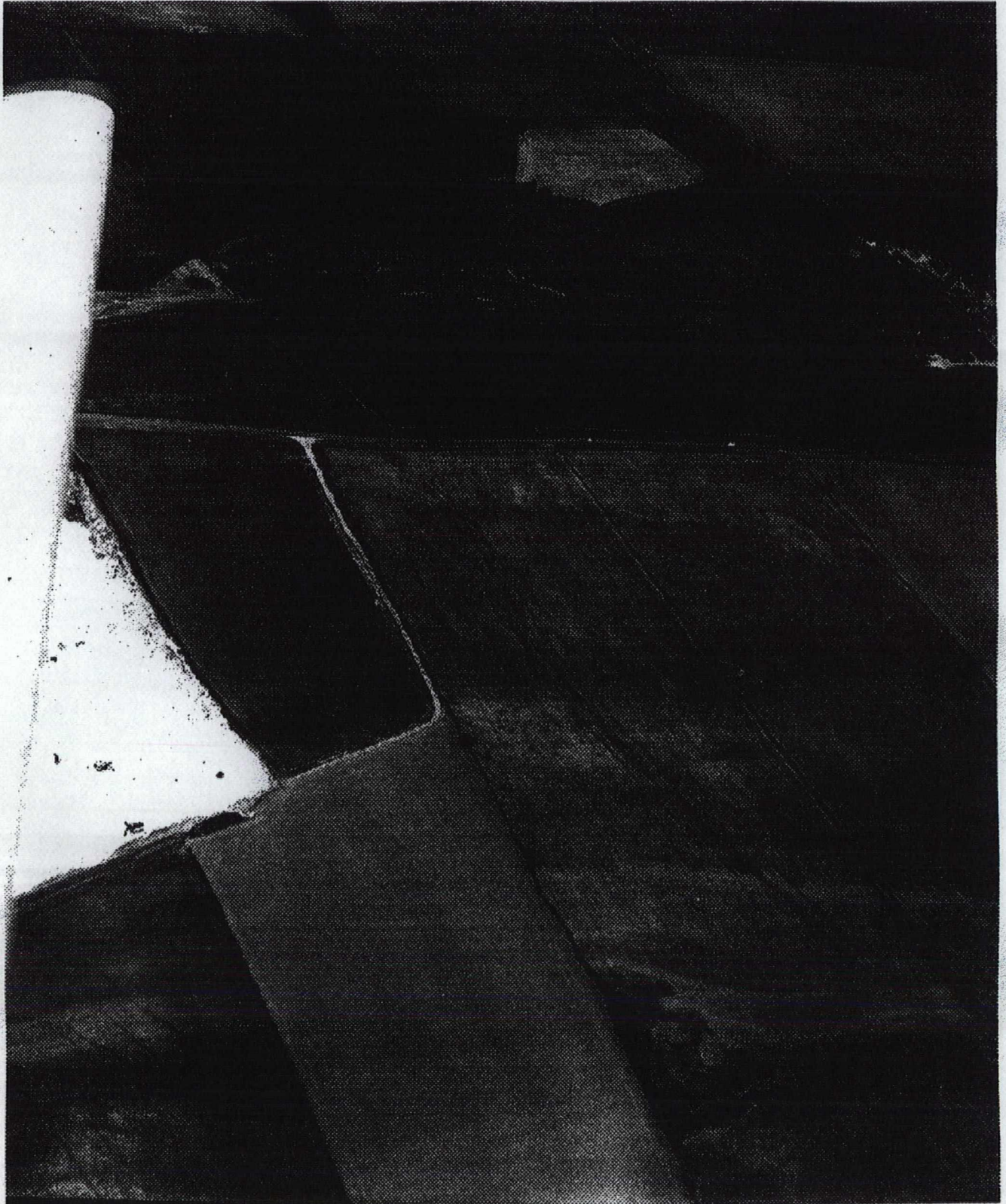


Plate 2. Aerial Photograph of Wath Quarry. Facing North-east.



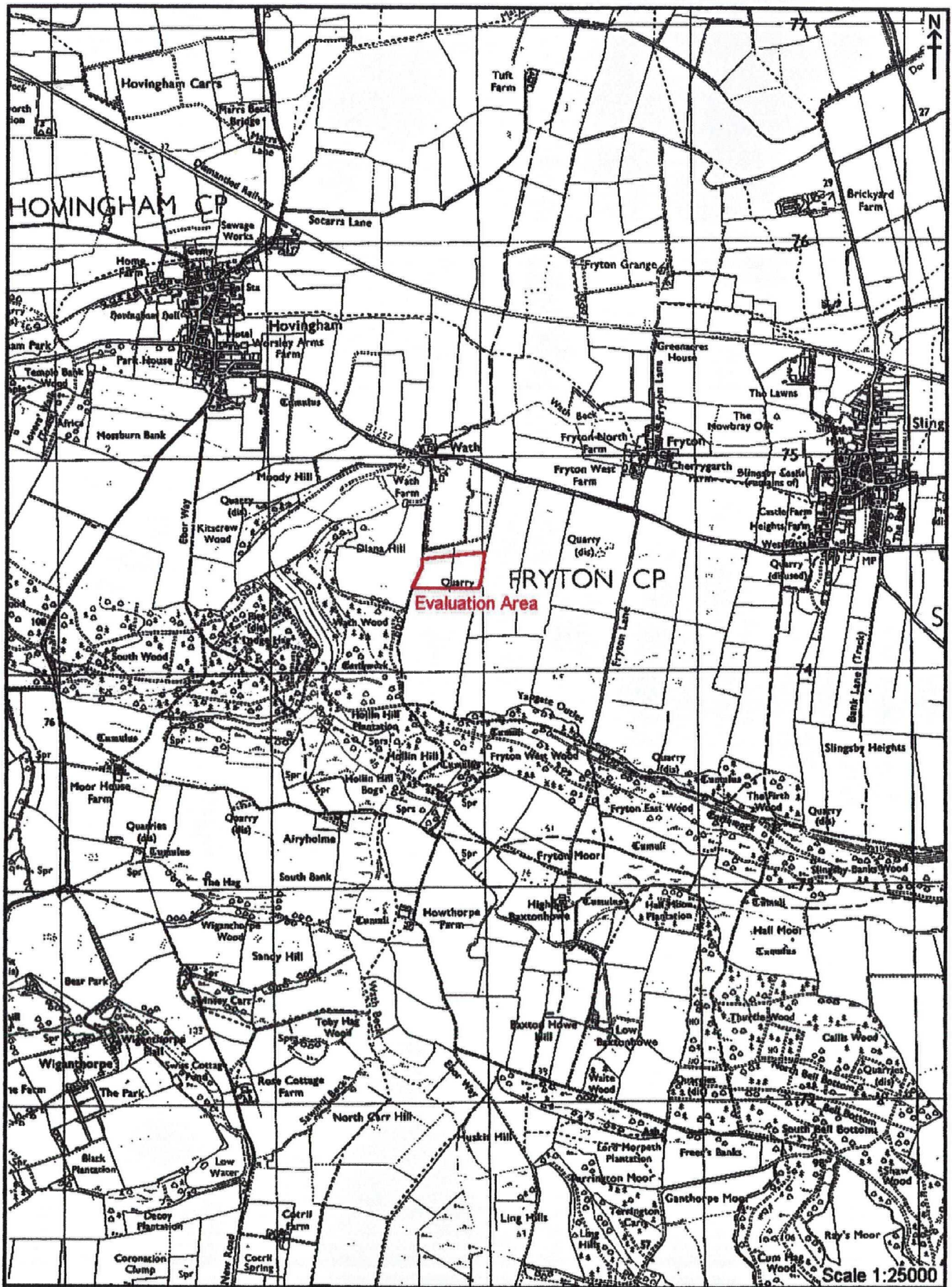


Figure 1. Site Location.



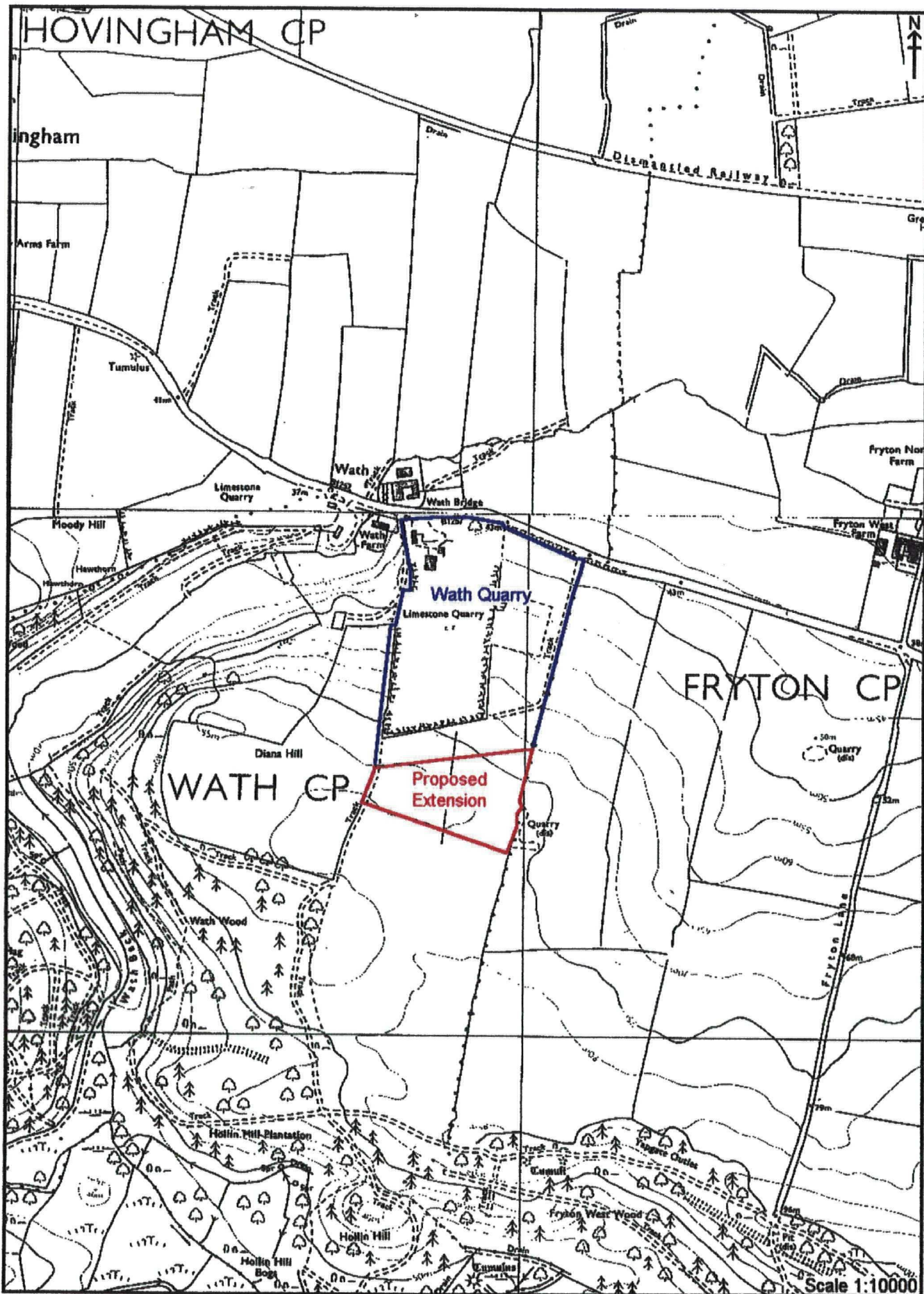


Figure 2. Wath Quarry and Proposed Extension Area.



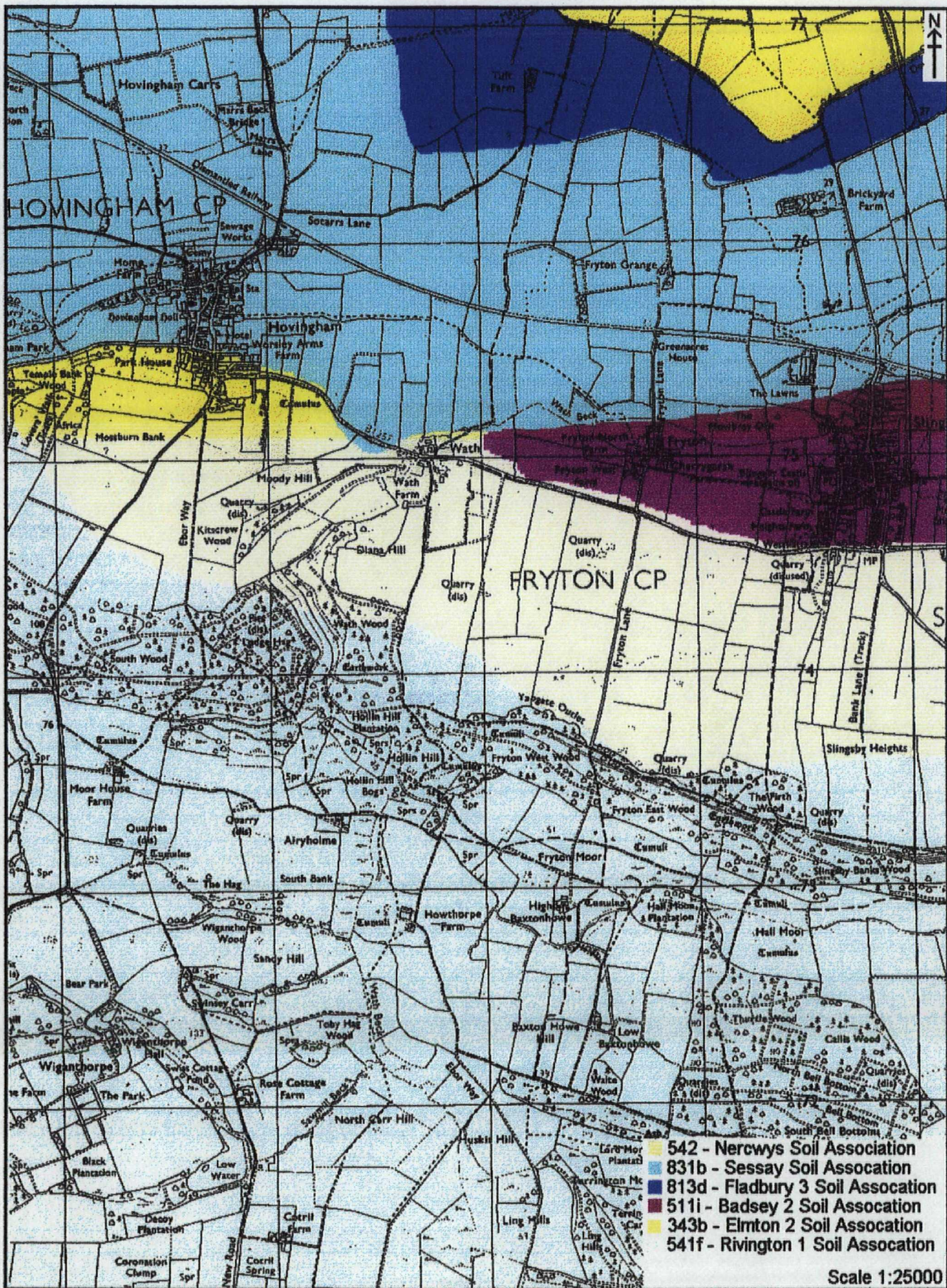


Figure 3. Geological Soils Map.



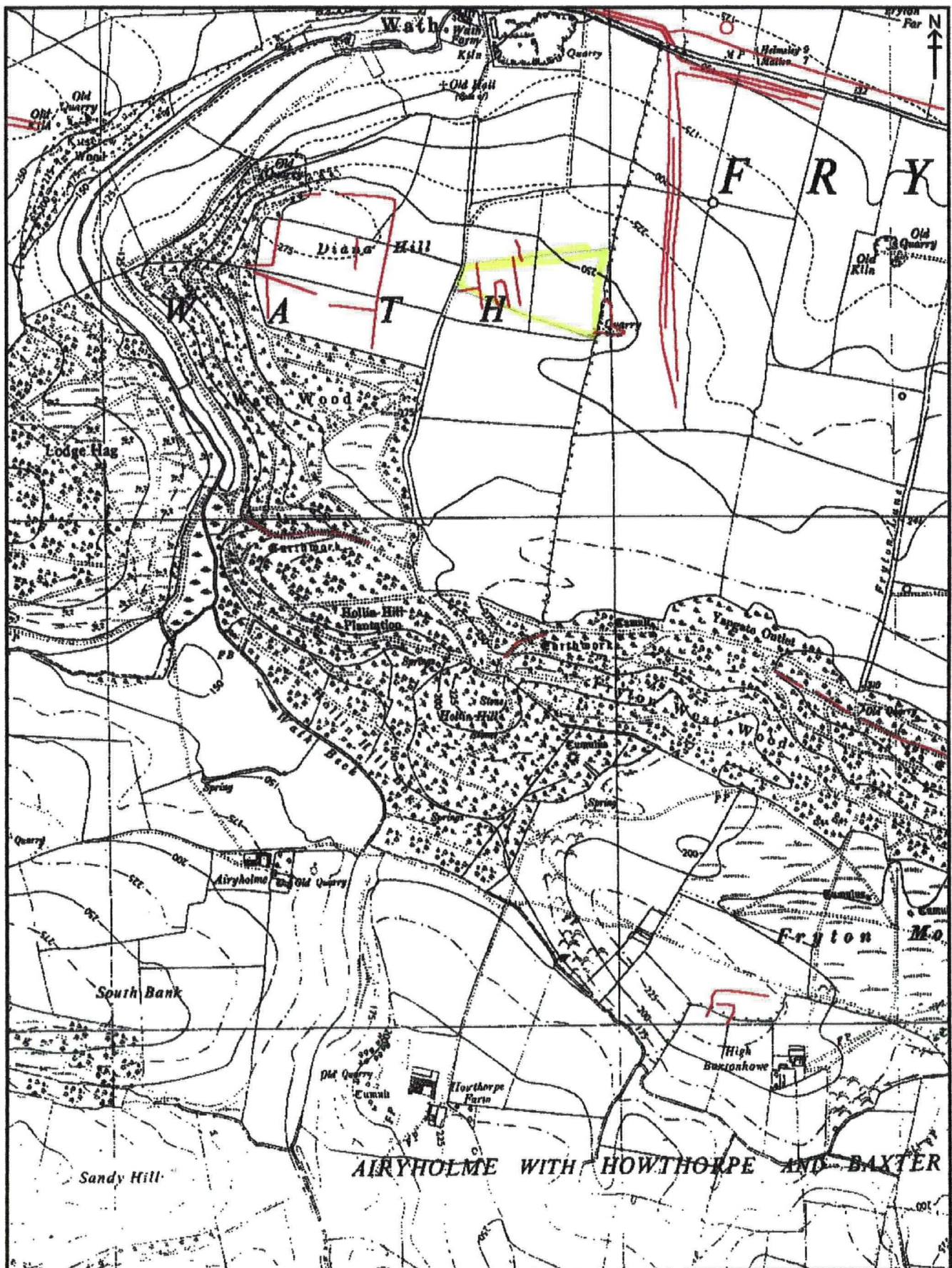


Figure 4. Aerial Photographic Data.



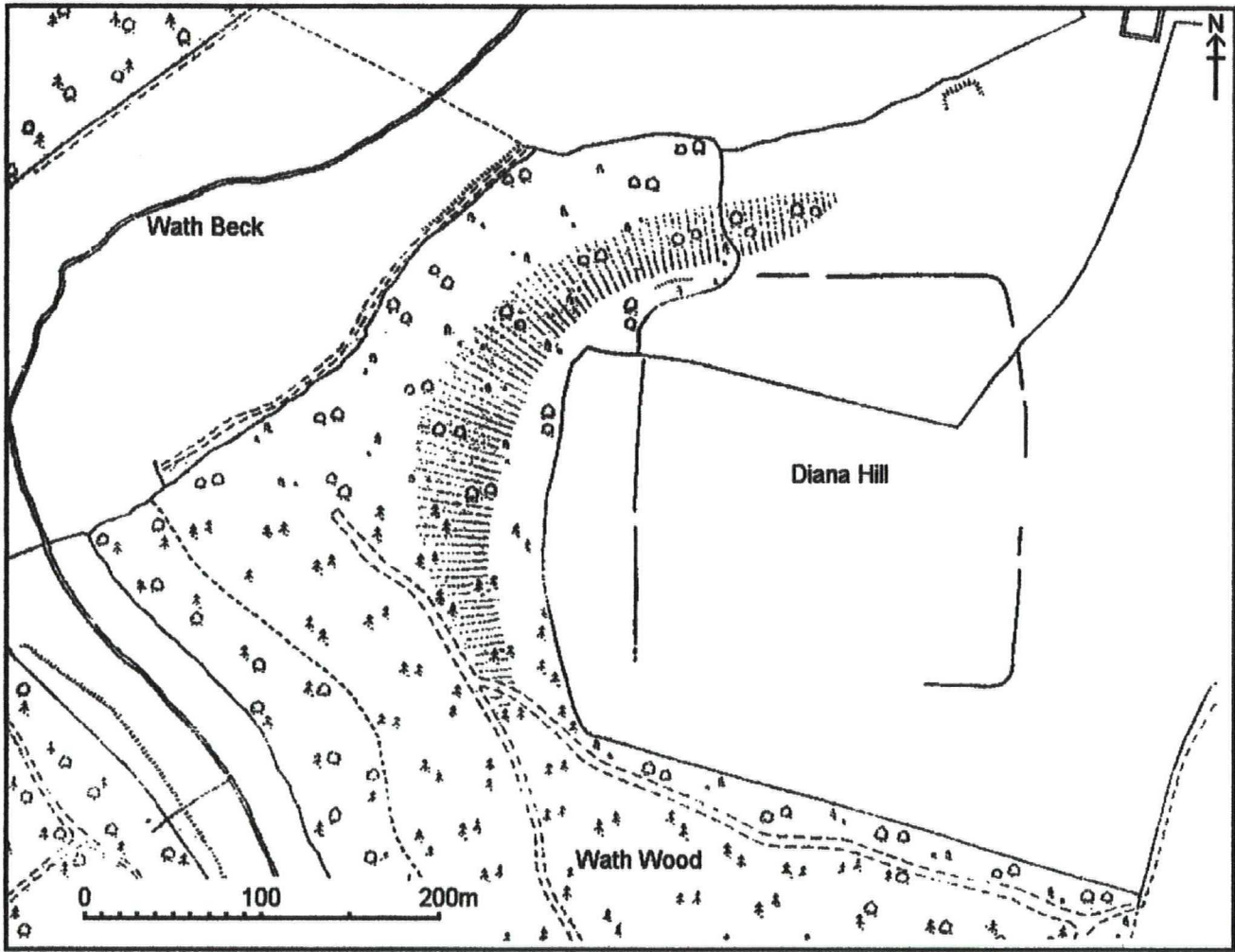


Figure 5. Plan of Roman Camp.



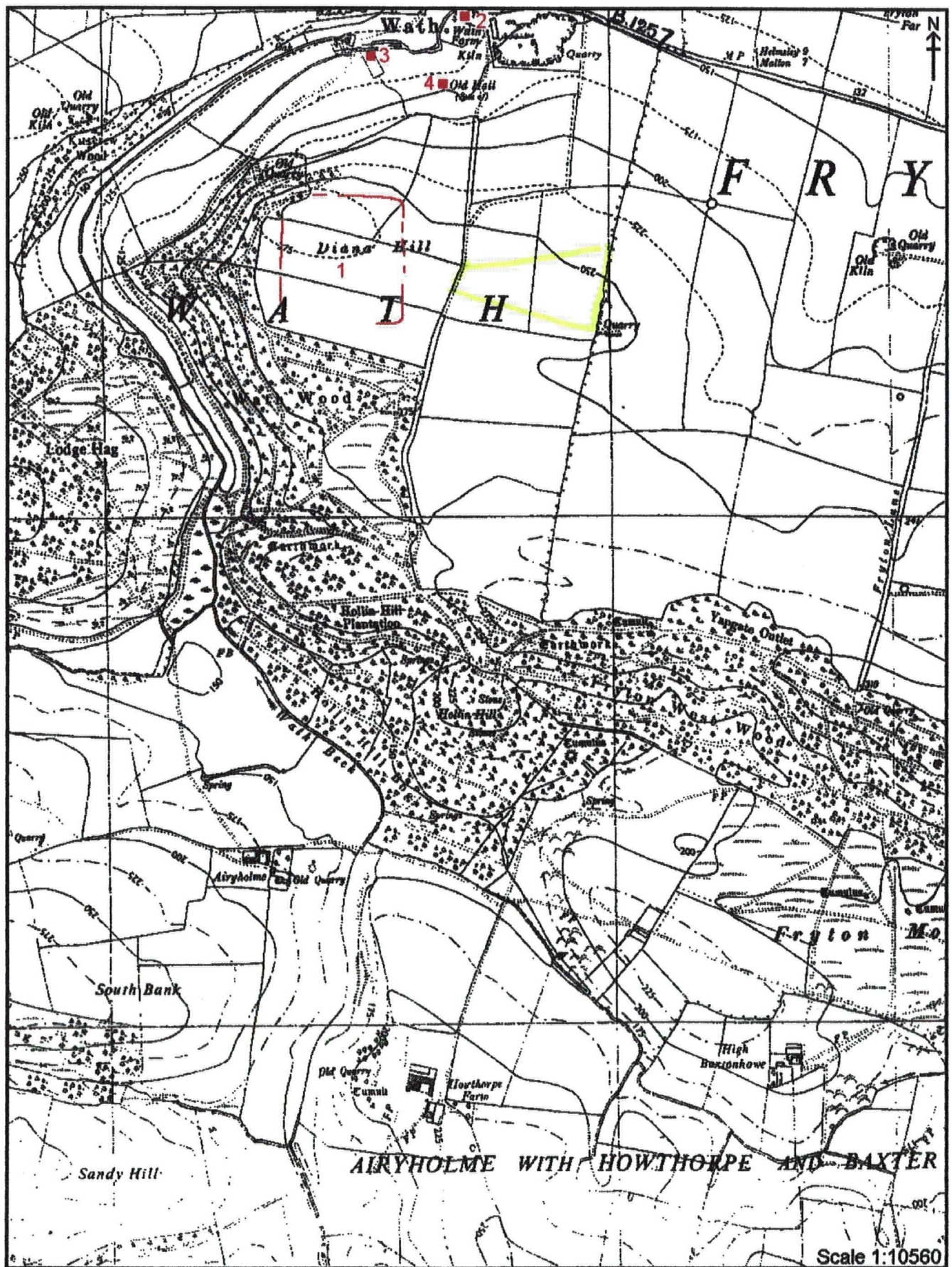


Figure 6. Archaeological Sites.



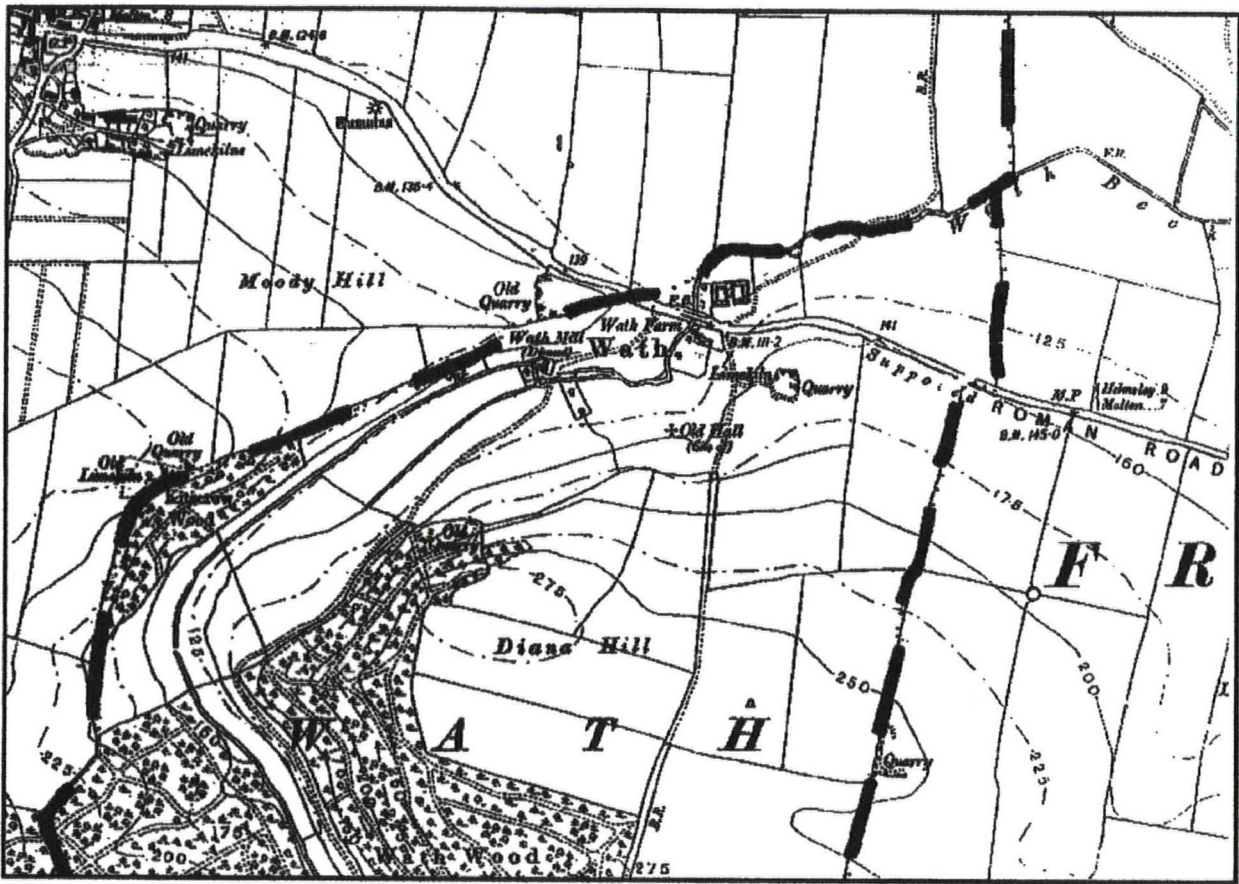


Figure 7. Land Divisions, c. 1858.

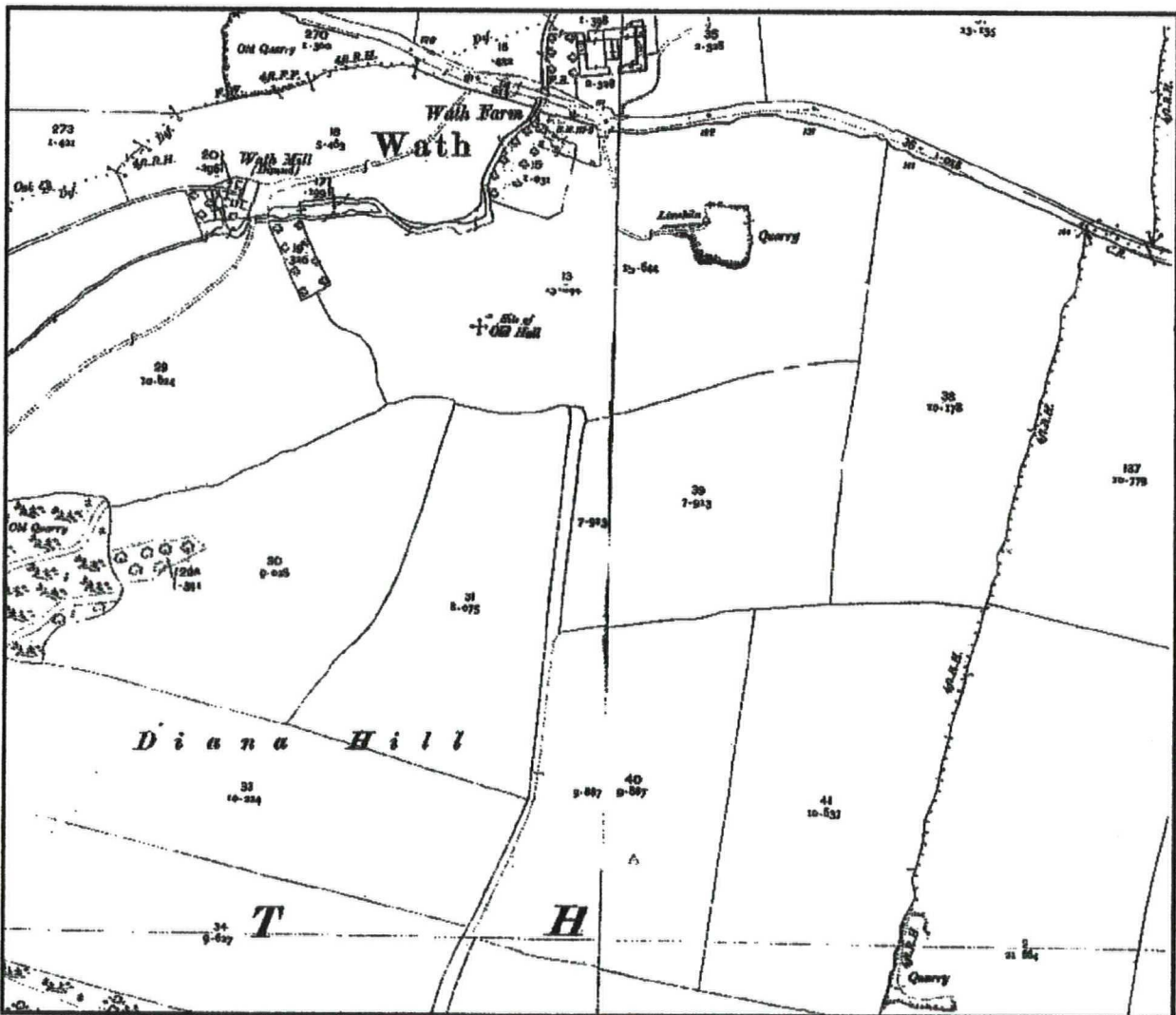


Figure 8. Land Divisions, c. 1911.



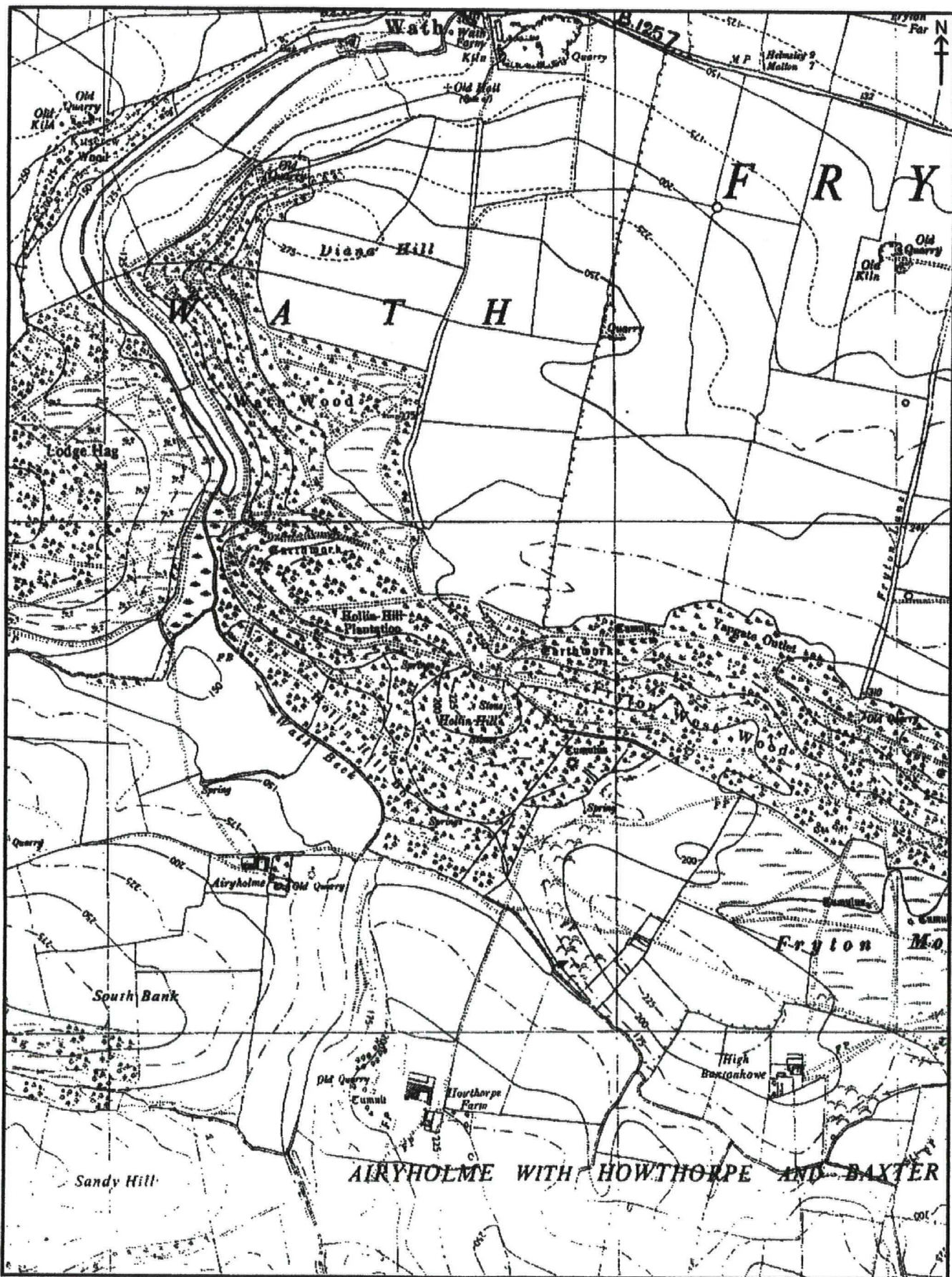


Figure 9. Land Divisions, c. 1958.



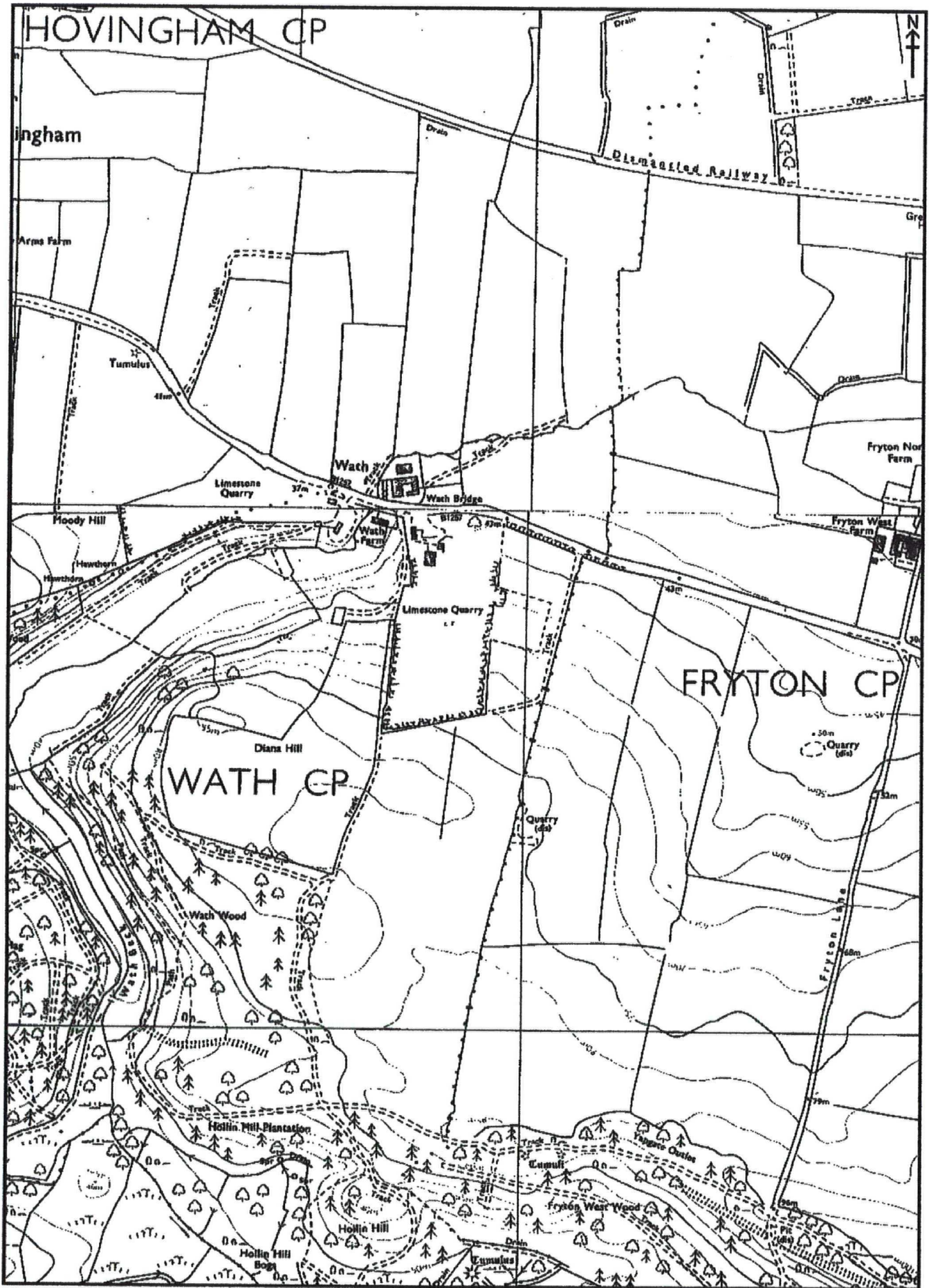


Figure 10. Land Divisions, c. 1981.