

Fig. 21. Interpretation of gradiometer data; Block L

0 50m

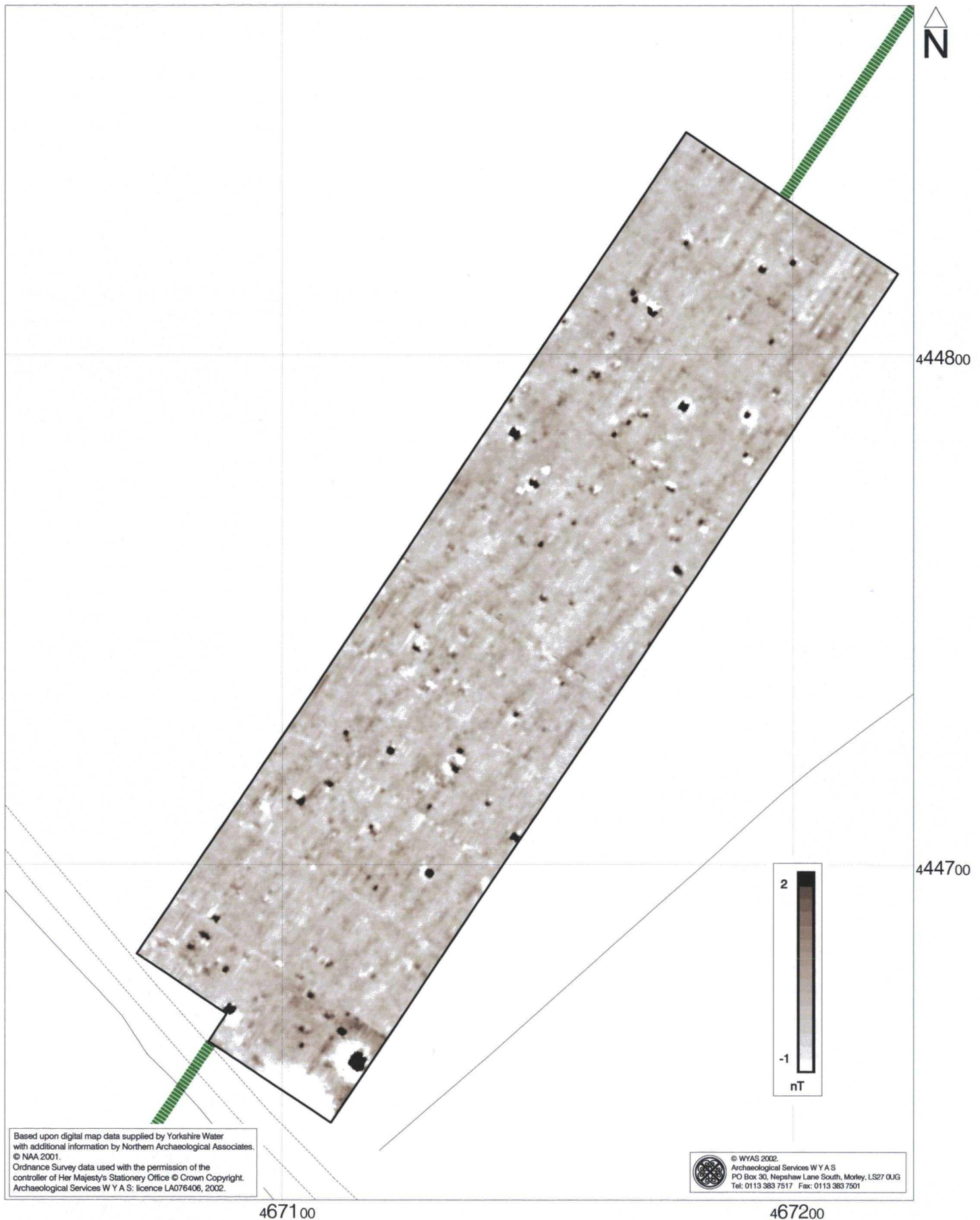


Fig. 22. Greyscale gradiometer data; Block M

0 50m

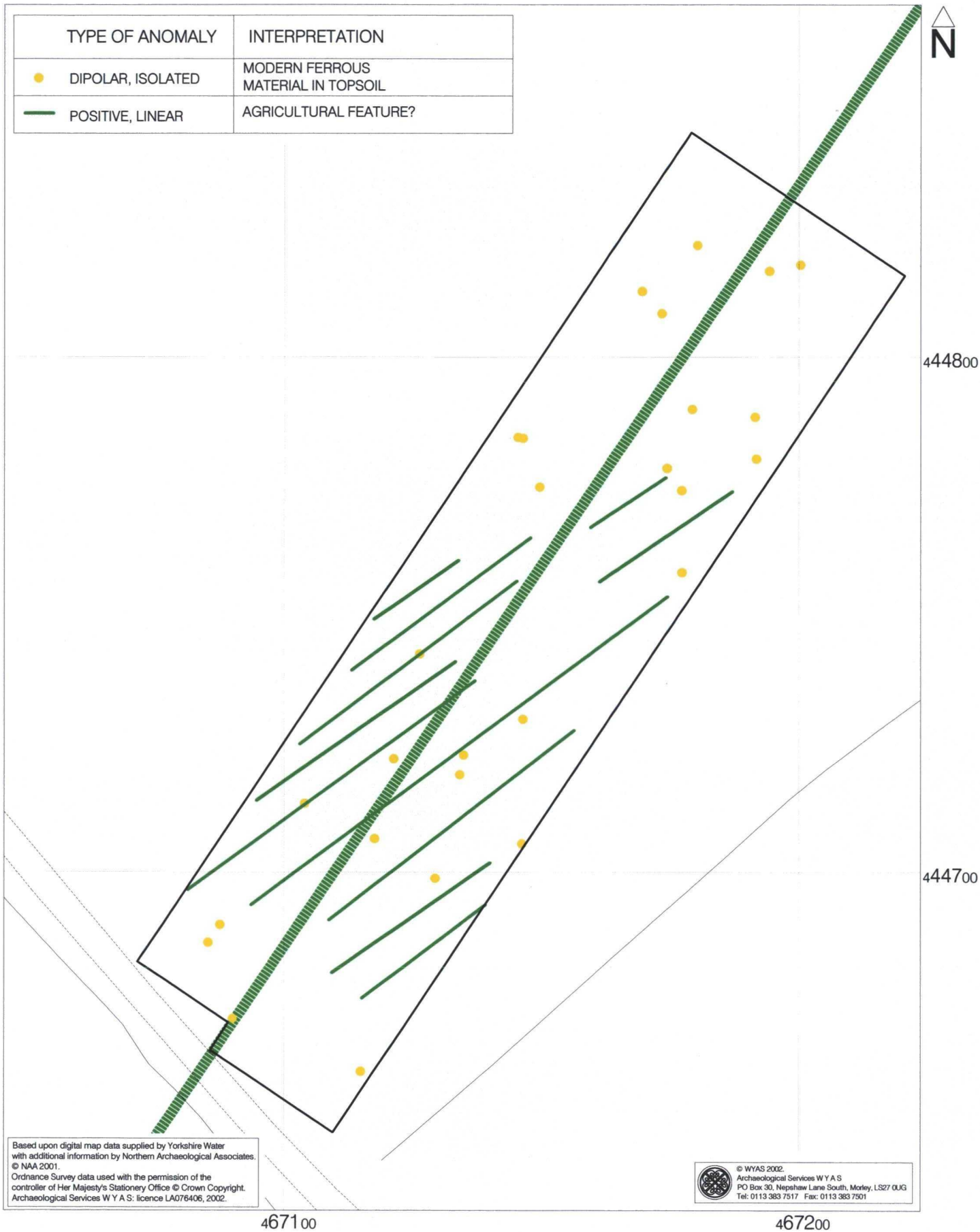


Fig. 23. Interpretation of gradiometer data; Block M

0 50m

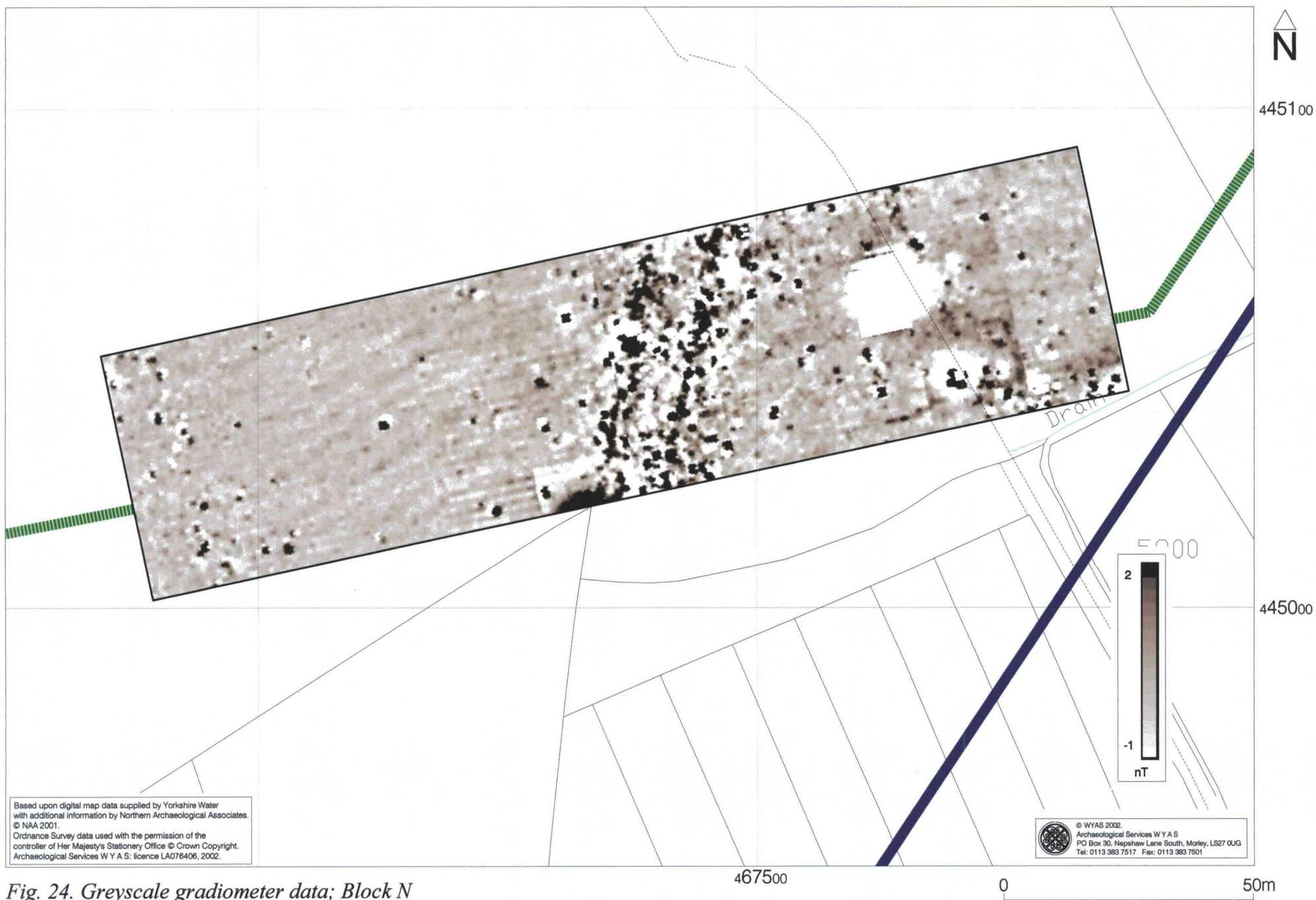
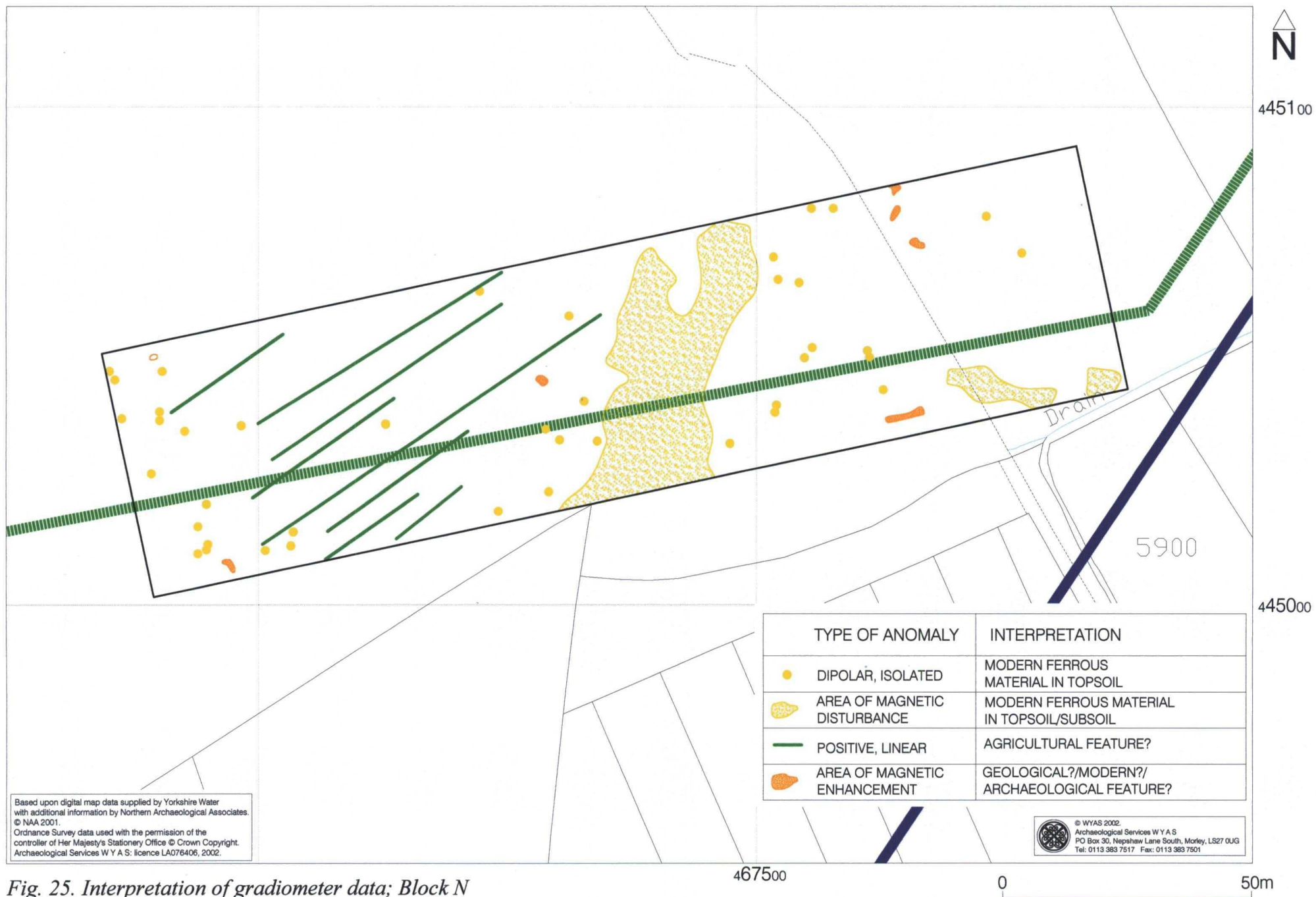


Fig. 24. Greyscale gradiometer data; Block N



TYPE OF ANOMALY	INTERPRETATION
● DIPOLAR, ISOLATED	MODERN FERROUS MATERIAL IN TOPSOIL
■ AREA OF MAGNETIC DISTURBANCE	MODERN FERROUS MATERIAL IN TOPSOIL/SUBSOIL
— POSITIVE, LINEAR	AGRICULTURAL FEATURE?
■ AREA OF MAGNETIC ENHANCEMENT	GEOLOGICAL?/MODERN?/ARCHAEOLOGICAL FEATURE?

Based upon digital map data supplied by Yorkshire Water with additional information by Northern Archaeological Associates. © NAA 2001. Ordnance Survey data used with the permission of the controller of Her Majesty's Stationery Office © Crown Copyright. Archaeological Services W Y A S: licence LA076406, 2002.

© WYAS 2002. Archaeological Services W Y A S PO Box 30, Nepsaw Lane South, Morley, LS27 0UG Tel: 0113 383 7517 Fax: 0113 383 7501

Fig. 25. Interpretation of gradiometer data; Block N

467500

0 50m

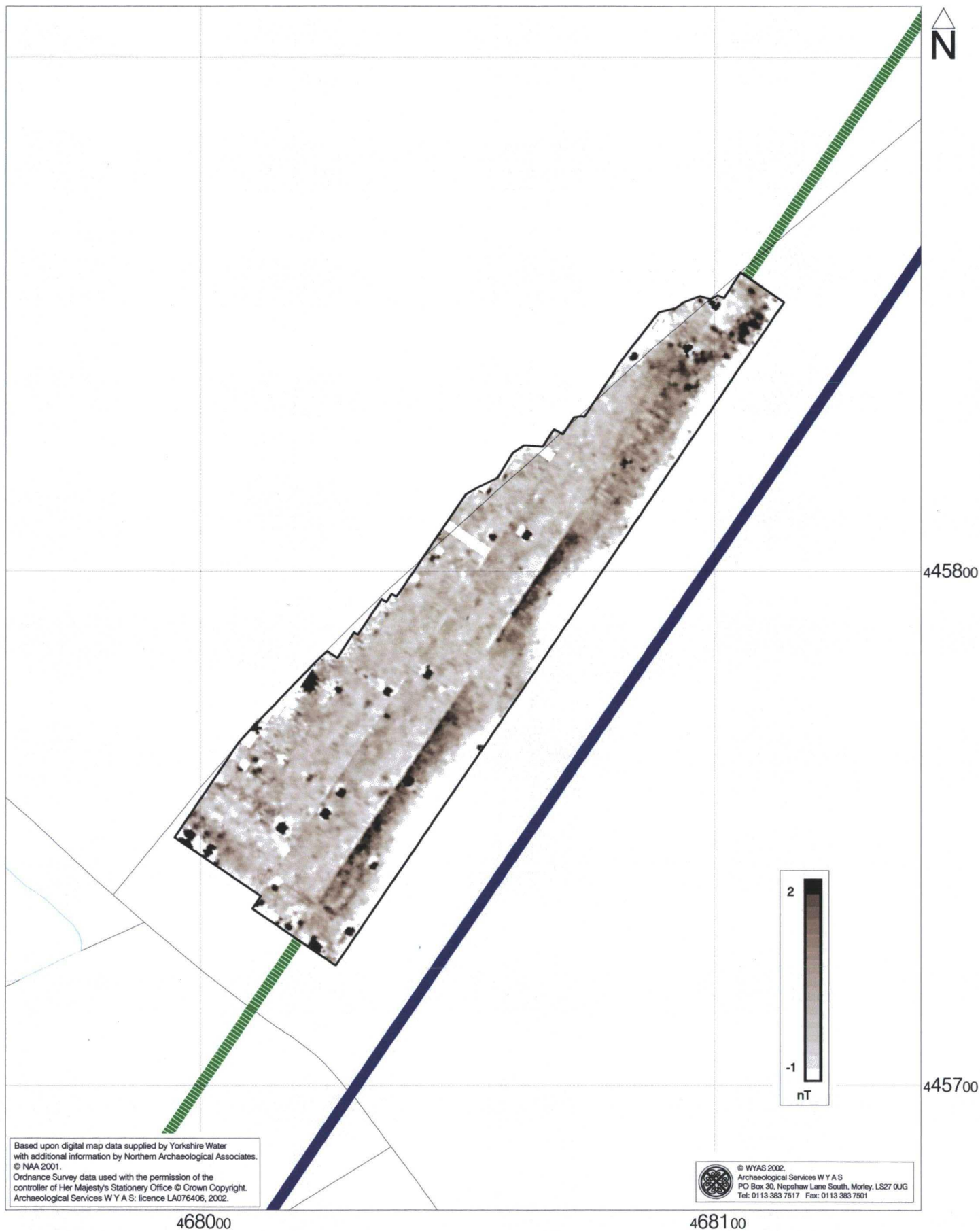


Fig. 26. Greyscale gradiometer data; Block O

0 50m

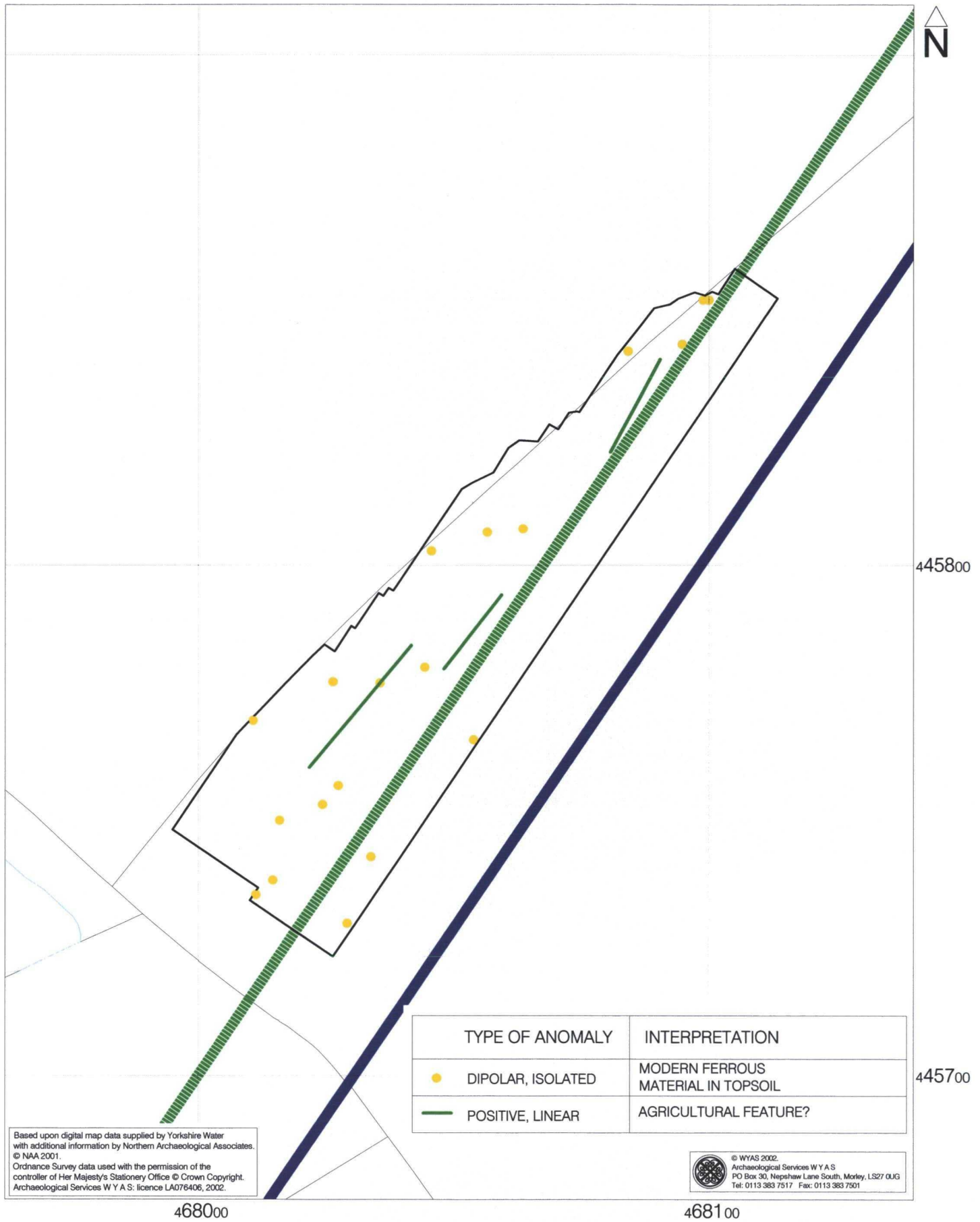
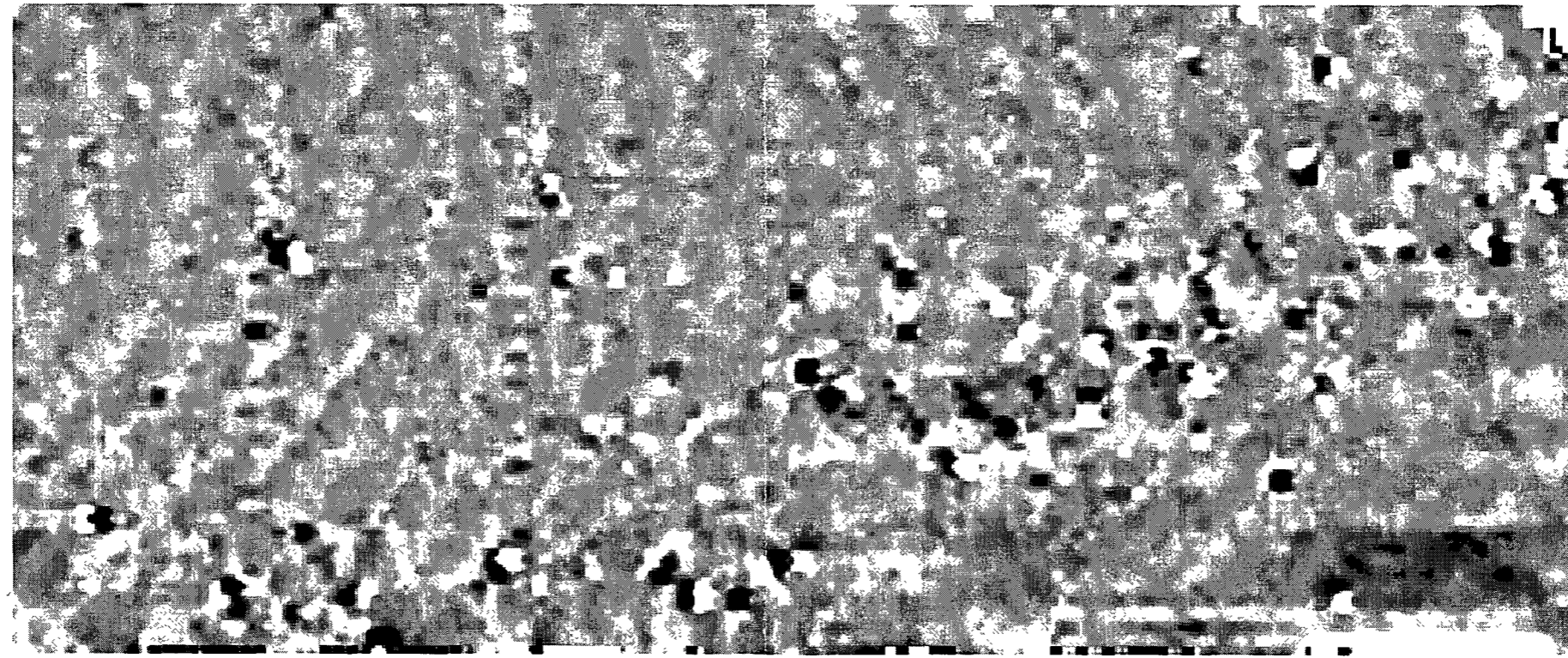
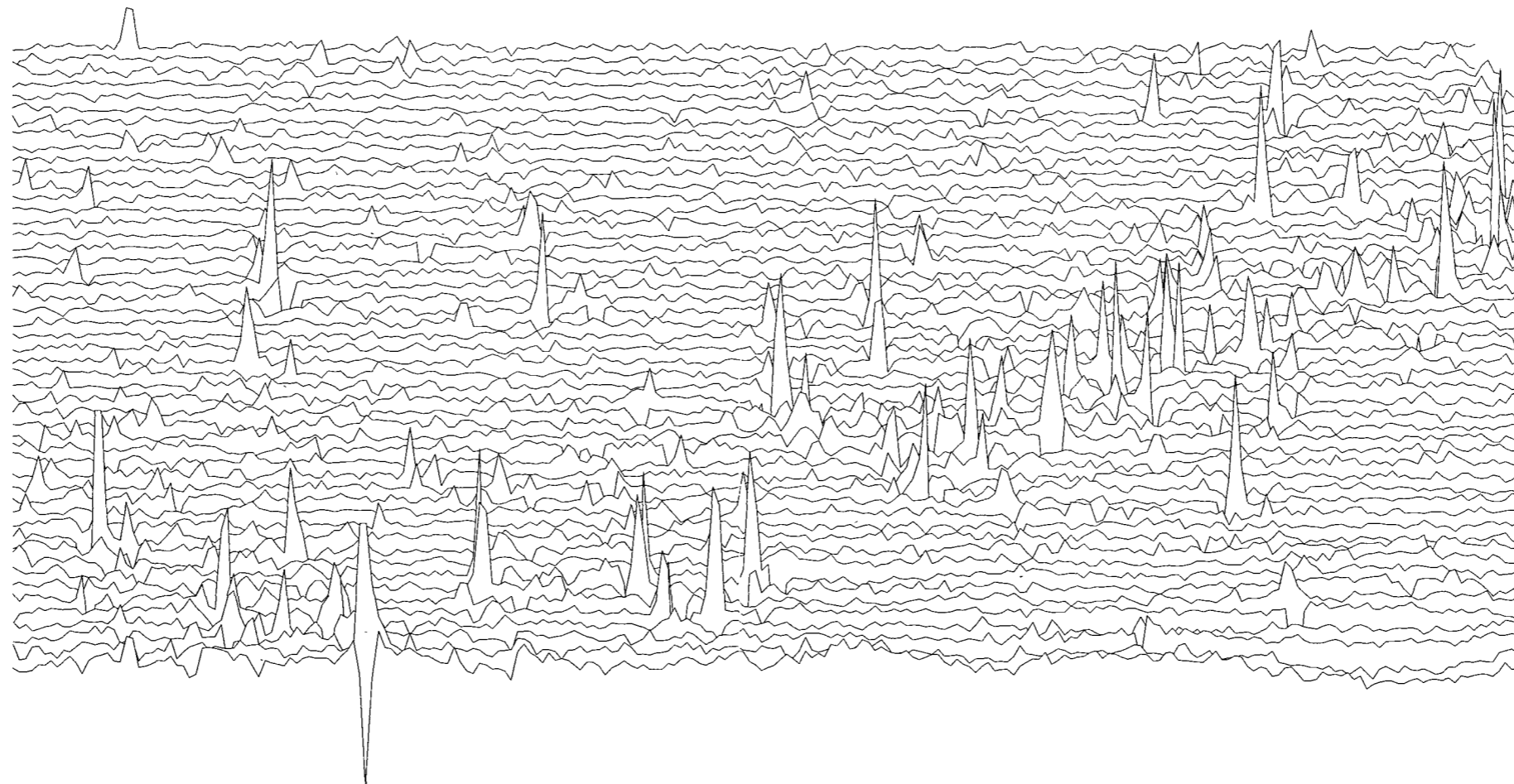
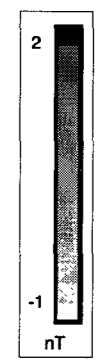


Fig. 27. Interpretation of gradiometer data; Block O

0 50m



5.0nT/cm



© WYAS 2002
Archaeological Services WYAS
PO Box 30, Nepshaw Lane South, Morley, LS27 0UG
Tel 0113 383 7515 Fax 0113 383 7501

0 20m

Fig. 28. Greyscale and X-Y trace plot of gradiometer data; Block A

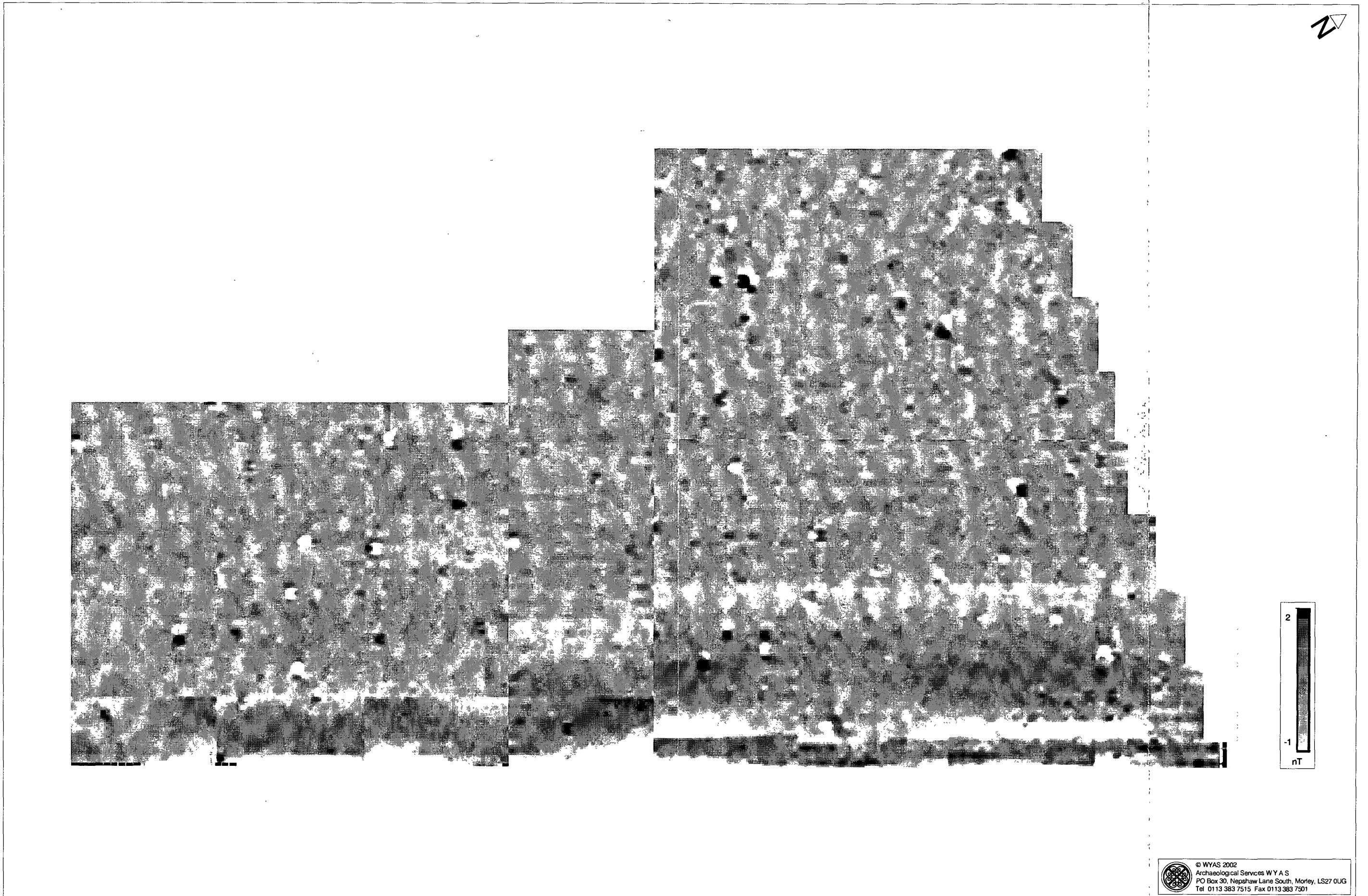


Fig. 29. Greyscale gradiometer data; Blocks B and C

© WYAS 2002
Archaeological Services WY A S
PO Box 30, Nepshaw Lane South, Morley, LS27 0UG
Tel 0113 383 7515 Fax 0113 383 7501

0 20m



Fig. 30. X-Y trace plot of gradiometer data; Blocks B and C