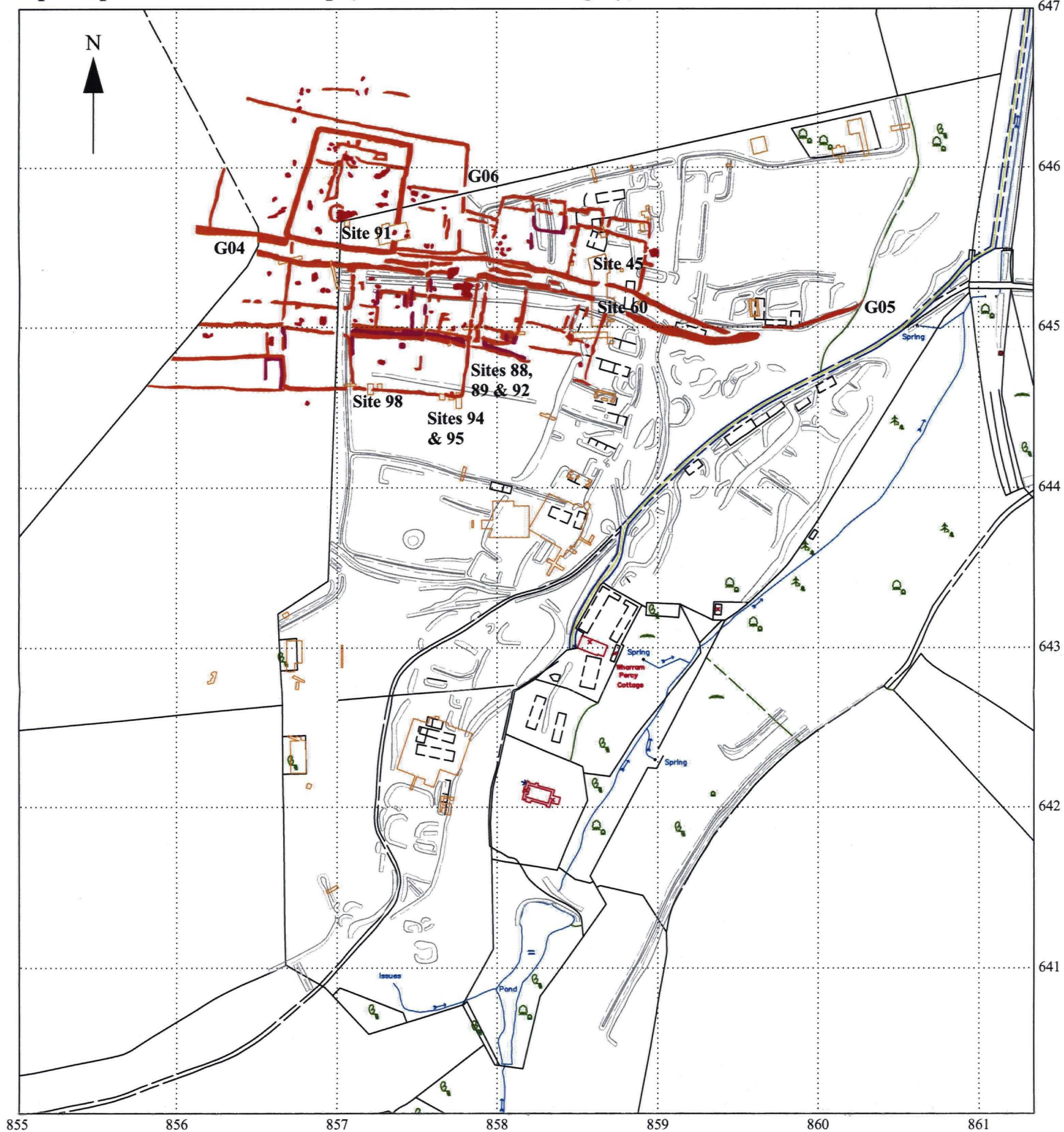


Figure 8: WHARRAM PERCY, NORTH YORKSHIRE. Interpretation of potential Iron Age and Roman anomalies detected in magnetometer survey, September 2002, superimposed on location map (earthworks shown in grey).

SE8564



Key

Anomalies likely to be caused by:

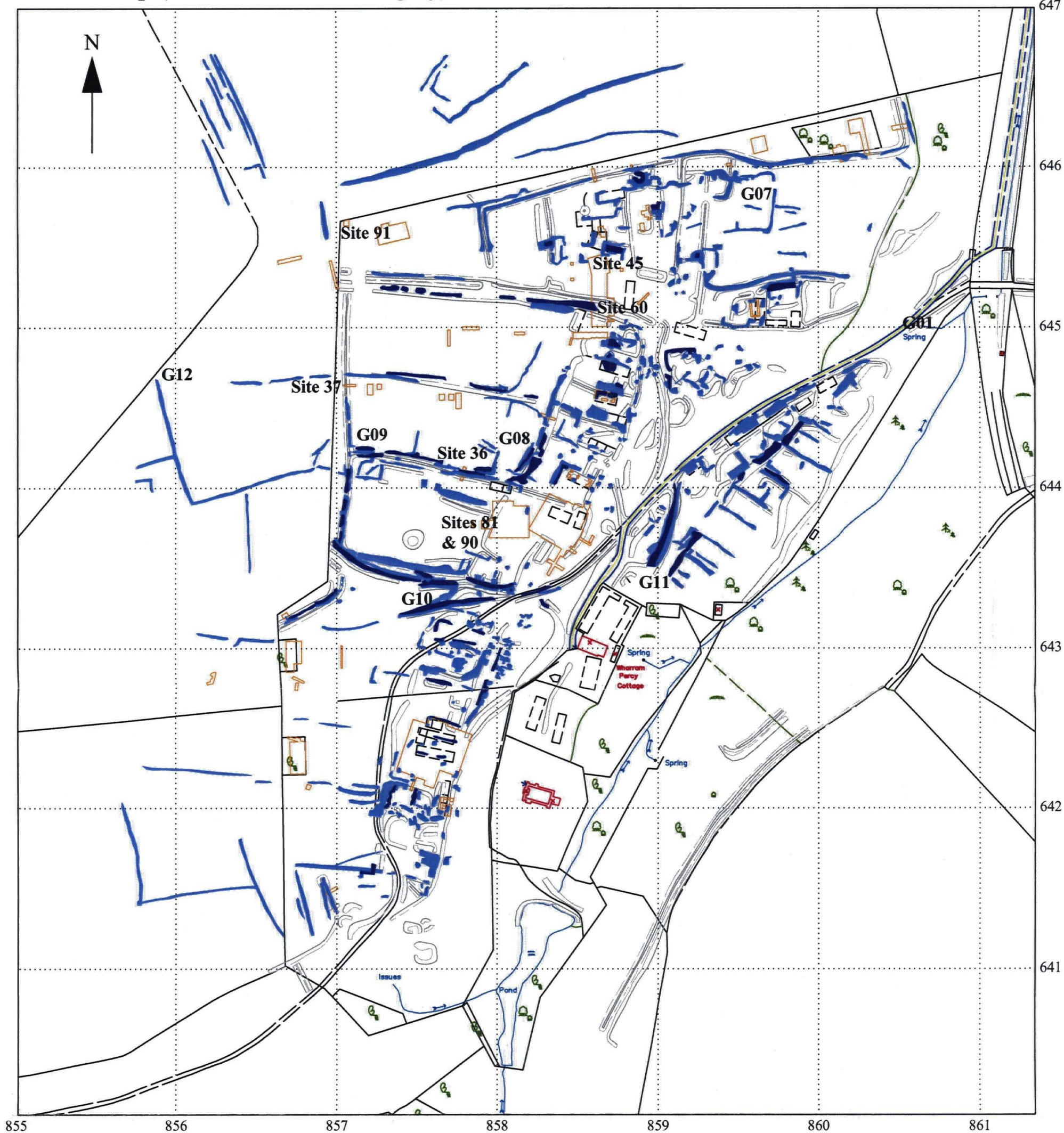
- Discrete pit-type features.
- Linear ditch-type features.
- Features of low magnetisation (eg: stone).
- Boundary of excavation trenches.
- G04**
Site 98 Annotations referred to in text.

This map is reproduced from the OS map by English Heritage with the permission of Ordnance Survey on behalf of The Controller of Her Majesty's Stationery Office, © Crown Copyright. All rights reserved. Unauthorised reproduction infringes Crown Copyright and may lead to prosecution or civil proceedings. Licence Number: GD030859G.

0 90m
1:2500

Figure 9: WHARRAM PERCY, NORTH YORKSHIRE. Interpretation of potential Medieval anomalies detected in magnetometer survey, September 2002, superimposed on location map (earthworks shown in grey).

SE8564



Key

Anomalies likely to be caused by:

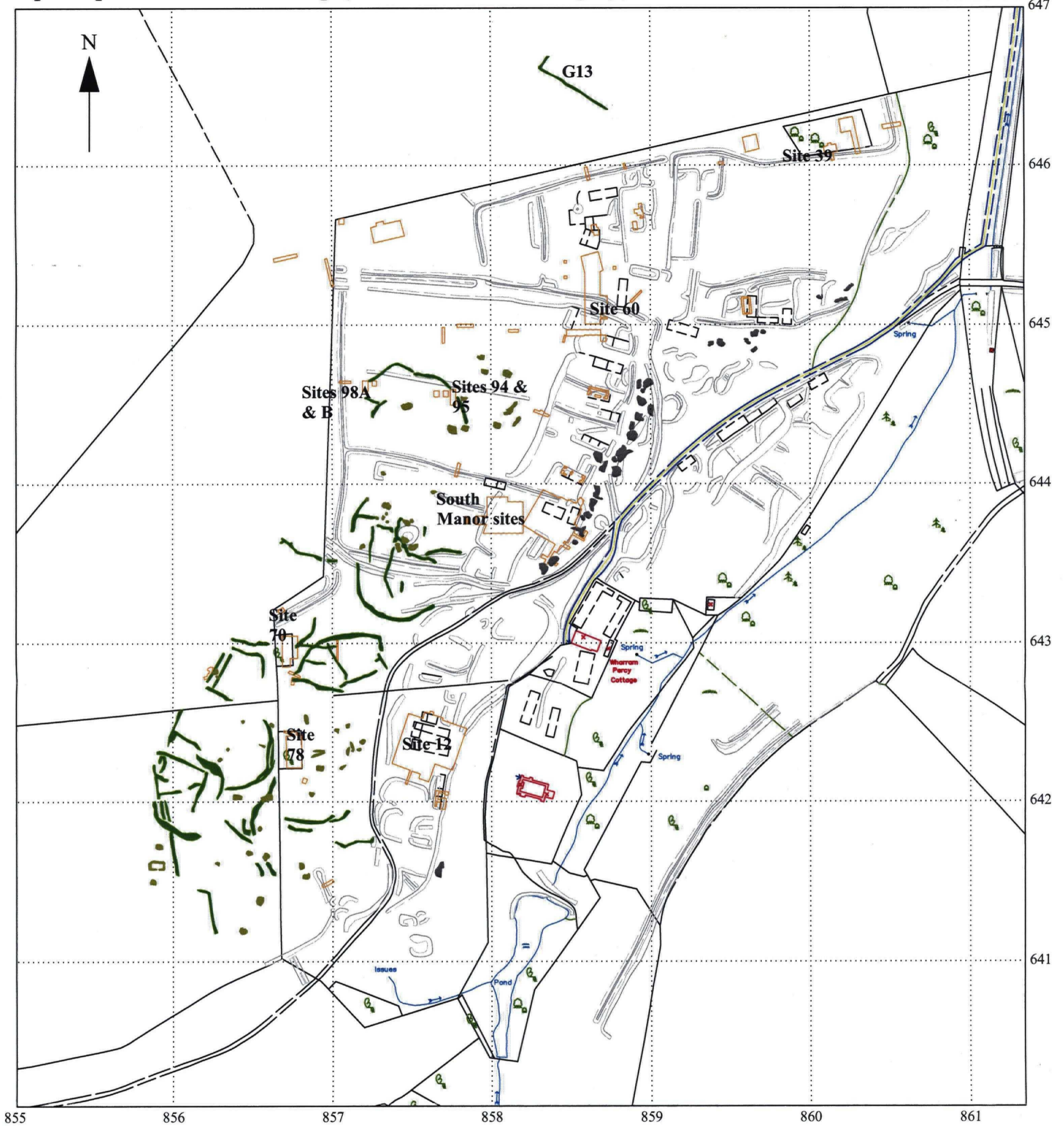
- | | | | |
|---|--|---|----------------------------------|
|  | Linear or discrete features of high magnetic susceptibility. |  | Boundary of excavation trenches. |
|  | Features of low magnetic susceptibility. | G04
Site 98 | Annotations referred to in text. |

This map is reproduced from the OS map by English Heritage with the permission of Ordnance Survey on behalf of The Controller of Her Majesty's Stationery Office, © Crown Copyright. All rights reserved. Unauthorised reproduction infringes Crown Copyright and may lead to prosecution or civil proceedings. Licence Number: GD030859G.

0  90m
1:2500

Figure 10: WHARRAM PERCY, NORTH YORKSHIRE. Interpretation of other potential archaeological anomalies detected in magnetometer survey, September 2002, superimposed on location map (earthworks shown in grey).

SE8564



Key

Anomalies likely to be caused by:

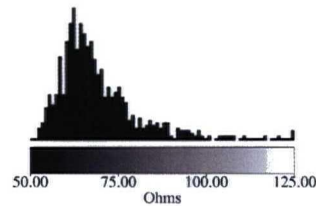
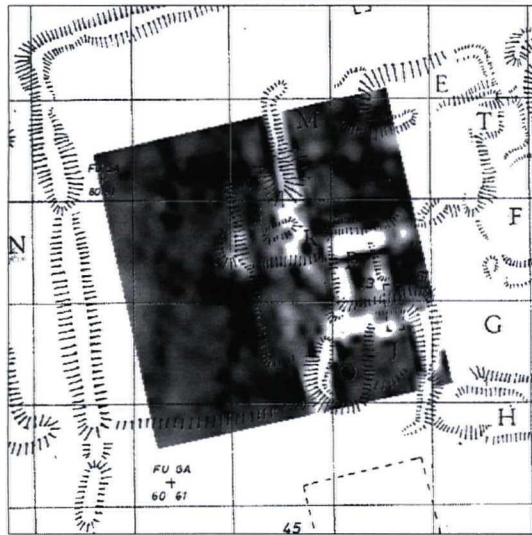
- | | | | |
|---|--|---|----------------------------------|
|  | Linear features of high magnetic susceptibility. |  | Boundary of excavation trenches. |
|  | Discrete features of high magnetic susceptibility. | G13 | Annotations referred to in text. |
|  | Quarrying. | Site 98 | |

This map is reproduced from the OS map by English Heritage with the permission of Ordnance Survey on behalf of The Controller of Her Majesty's Stationery Office, © Crown Copyright. All rights reserved. Unauthorised reproduction infringes Crown Copyright and may lead to prosecution or civil proceedings. Licence Number: GD030859G.

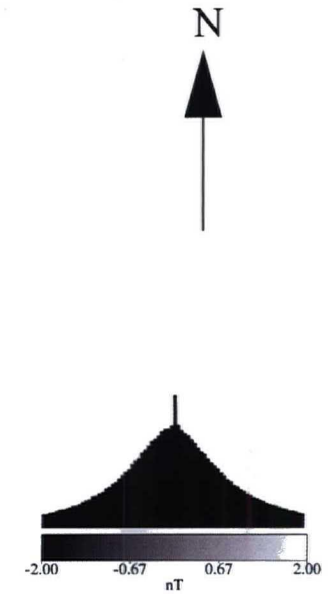
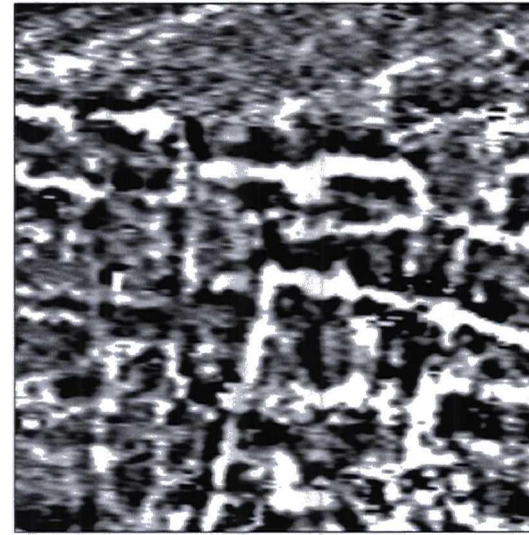
0  90m
1:2500

Figure 11: Comparison of the 1984 earth resistance survey from the North Manor area with magnetometer results and earthwork survey.

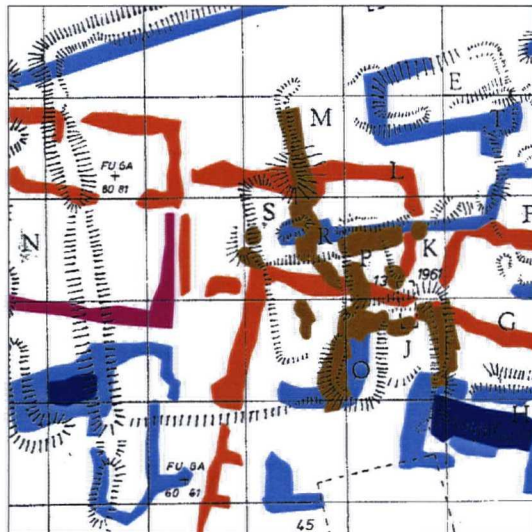
a) Earth resistance results, overlaid on earthwork hachure survey.






b) Magnetometer survey of the same area.

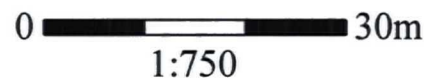


c) Interpretation of geophysical anomalies.



Key

-  Magnetic anomalies likely to be caused by Iron Age and Roman features.
-  Magnetic anomalies likely to be caused by Medieval features.
-  High resistance anomalies, likely to be caused by buried masonry.



Earthworks hachure map based upon the survey of R. T. Porter, G. L. Worsley and W. J. Hopkins.

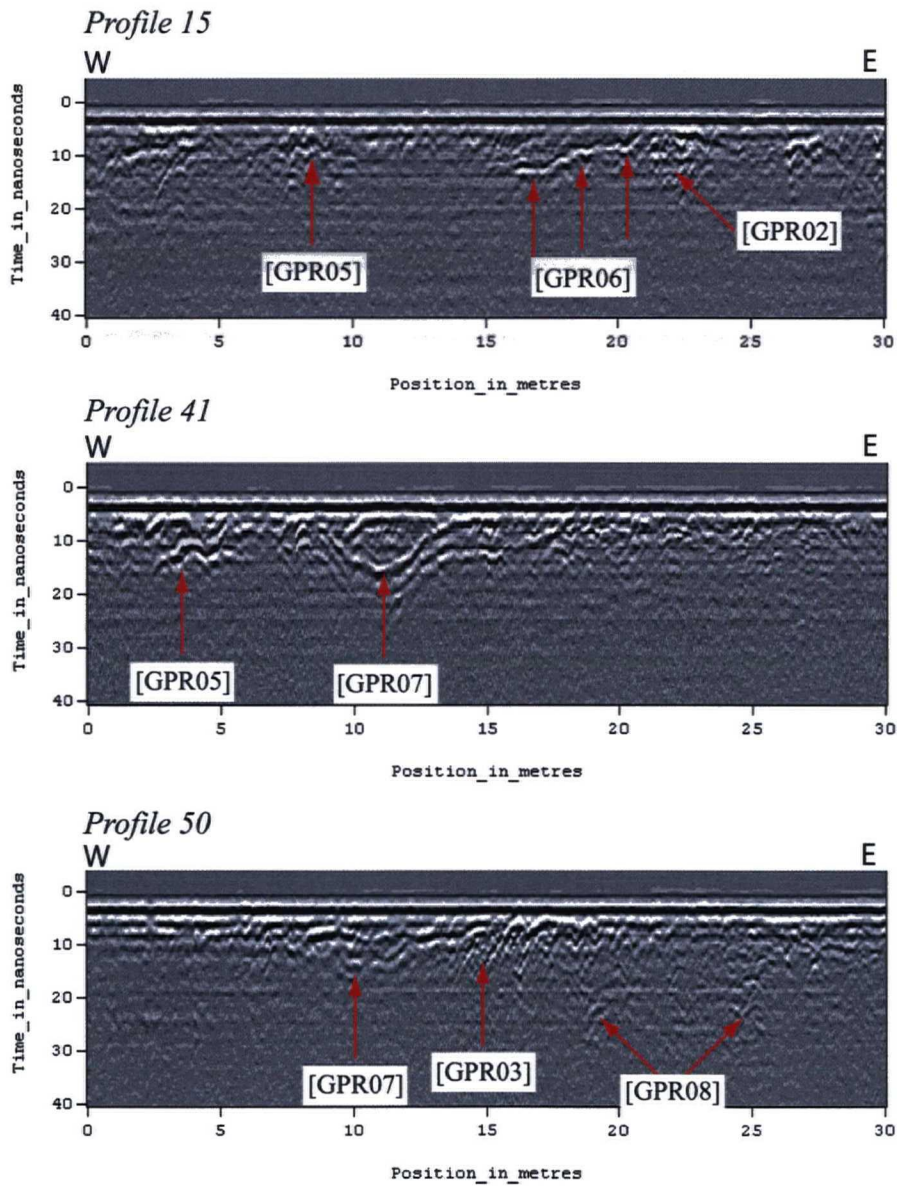
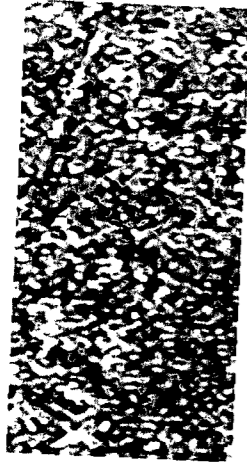


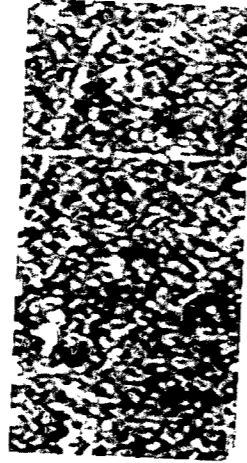
Figure 12; WHARRAM PERCY, NORTH YORKSHIRE, Representative profiles from the trial GPR survey indicating significant anomalies found in the amplitude timeslices (Figure 13) discussed in the accompanying text (Appendix 3).

Figure 13: WHARRAM PERCY, NORTH YORKSHIRE. Amplitude time slices produced from the trial ground penetrating radar survey, September 2002.

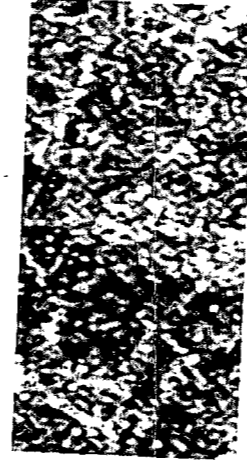
0 - 1.5ns (0.0 - 0.11m)



1.5 - 3.0ns (0.11 - 0.21m)



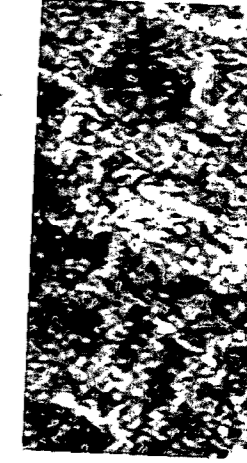
3.0 - 4.5ns (0.21 - 0.32m)



4.5 - 6.0ns (0.32 - 0.43m)



6.0 - 7.5ns (0.43 - 0.54m)



7.5 - 9.0ns (0.54 - 0.64m)



9.0 - 10.5ns (0.64 - 0.75m)



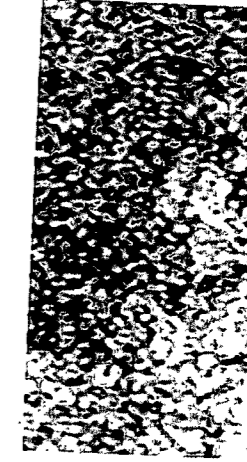
10.5 - 12.0ns (0.75 - 0.86m)



12.0 - 13.5ns (0.86 - 0.96m)



13.5 - 15.0ns (0.96 - 1.07m)



15.0 - 16.5ns (1.07 - 1.18m)



16.5 - 18.0ns (1.18 - 1.29m)



18.0 - 19.5ns (1.29 - 1.39m)



19.5 - 21.0ns (1.39 - 1.5m)

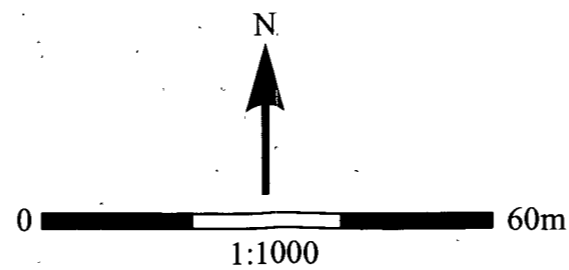
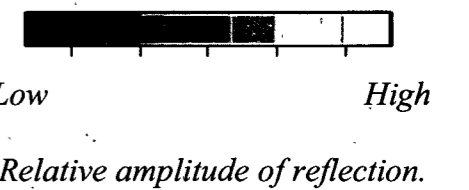


Figure 14: WHARRAM PERCY, NORTH YORKSHIRE.
 Summary of significant ground penetrating radar anomalies.

