

Figure 1. Site Location.



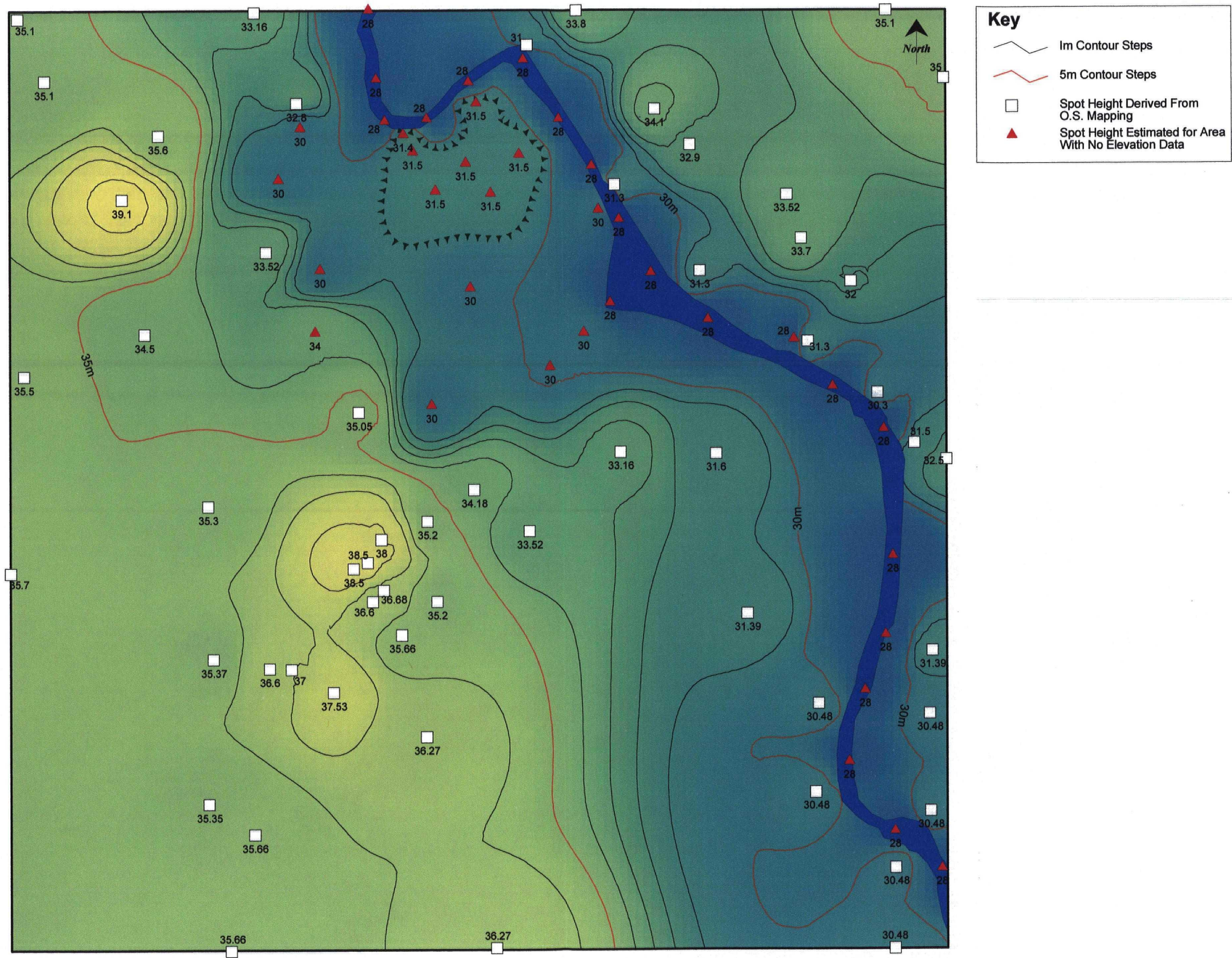
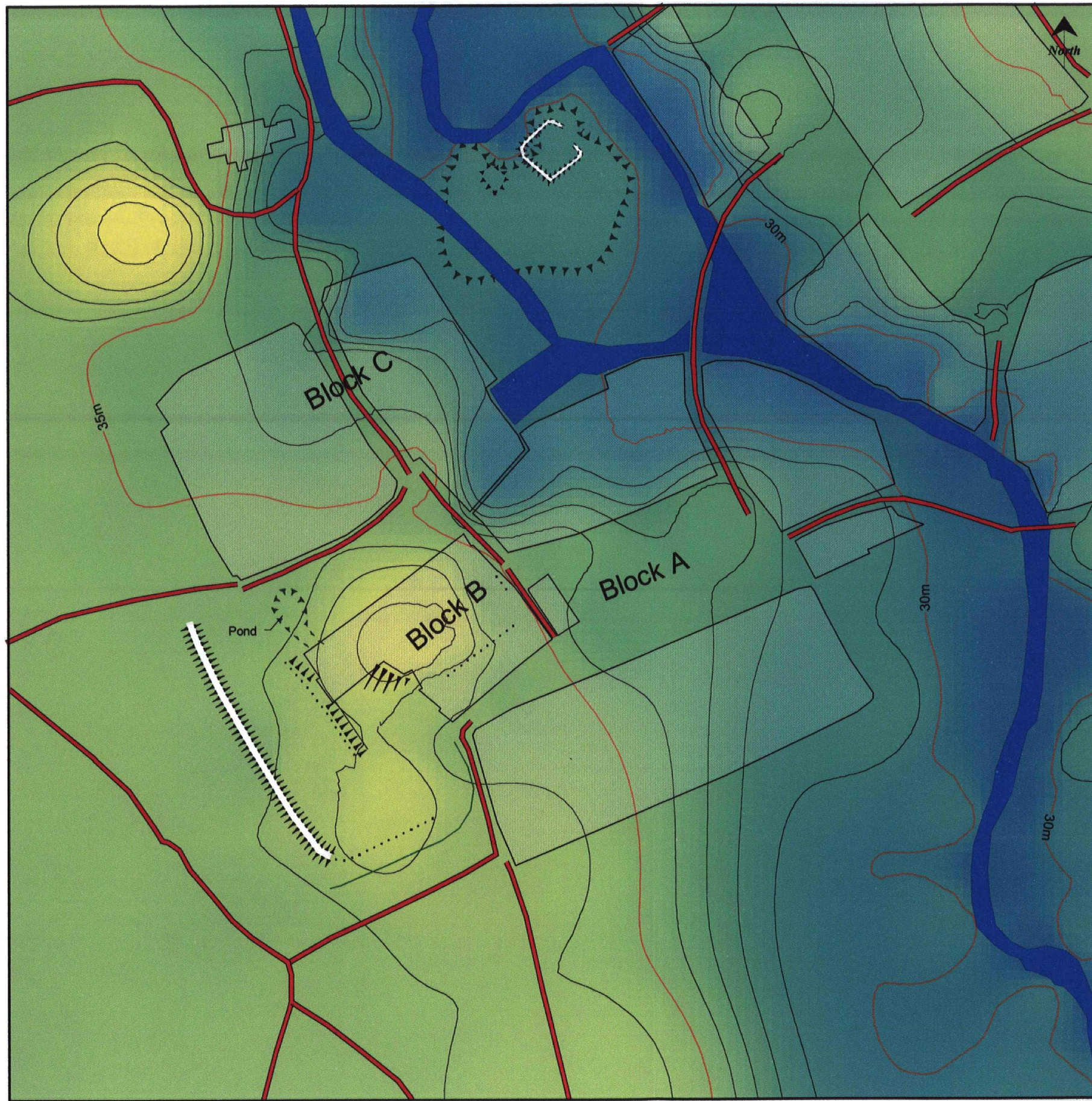




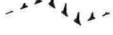

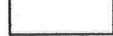


Figure 2. Topographical Map of Study Area





**Key**

-  1m Contour Steps
-  5m Contour Steps
-  Roads and Lanes
-  Embanked Earthworks (Derived from O.S. Mapping)
-  Sloped Earthworks (Derived from O.S. Mapping)
-  Projected Line of Earthworks and Archaeological Features
-  Urban Development Blocks

SE 426 818



Figure 3. Plan of Urban Structures



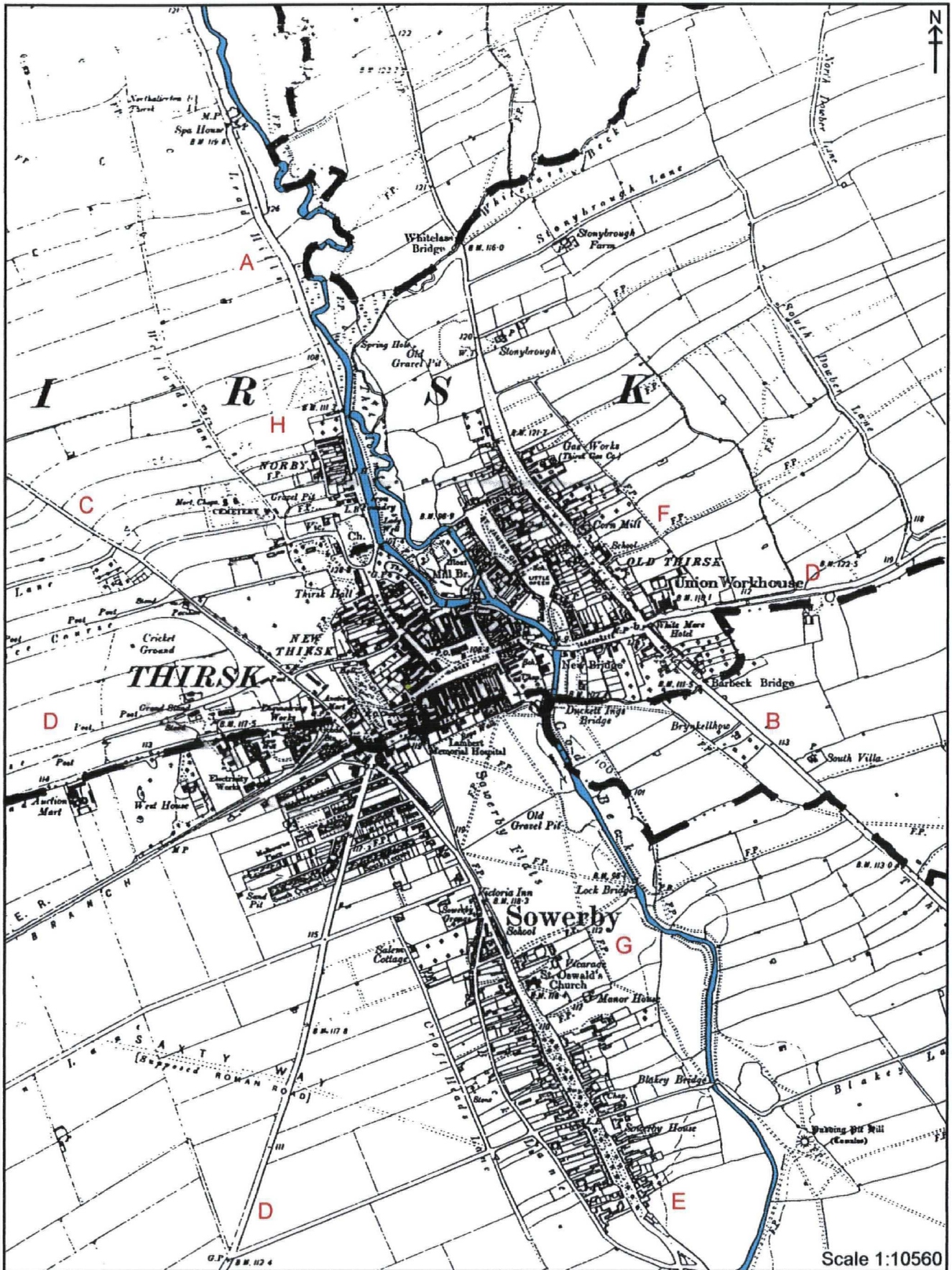


Figure 4. Plan of Topographical Features A to H.



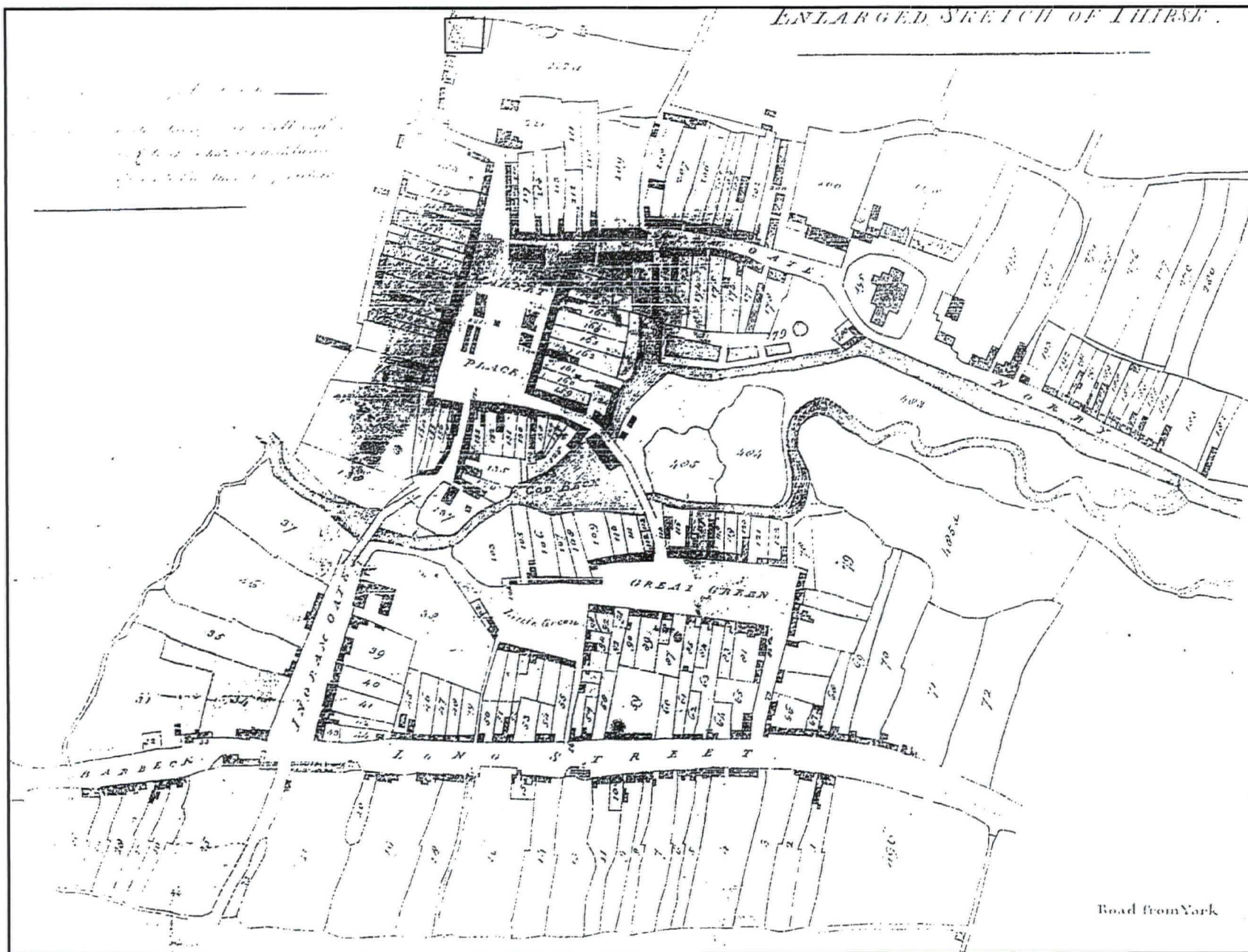


Figure 5. Extract from a 1796 Plan of Thirsk.



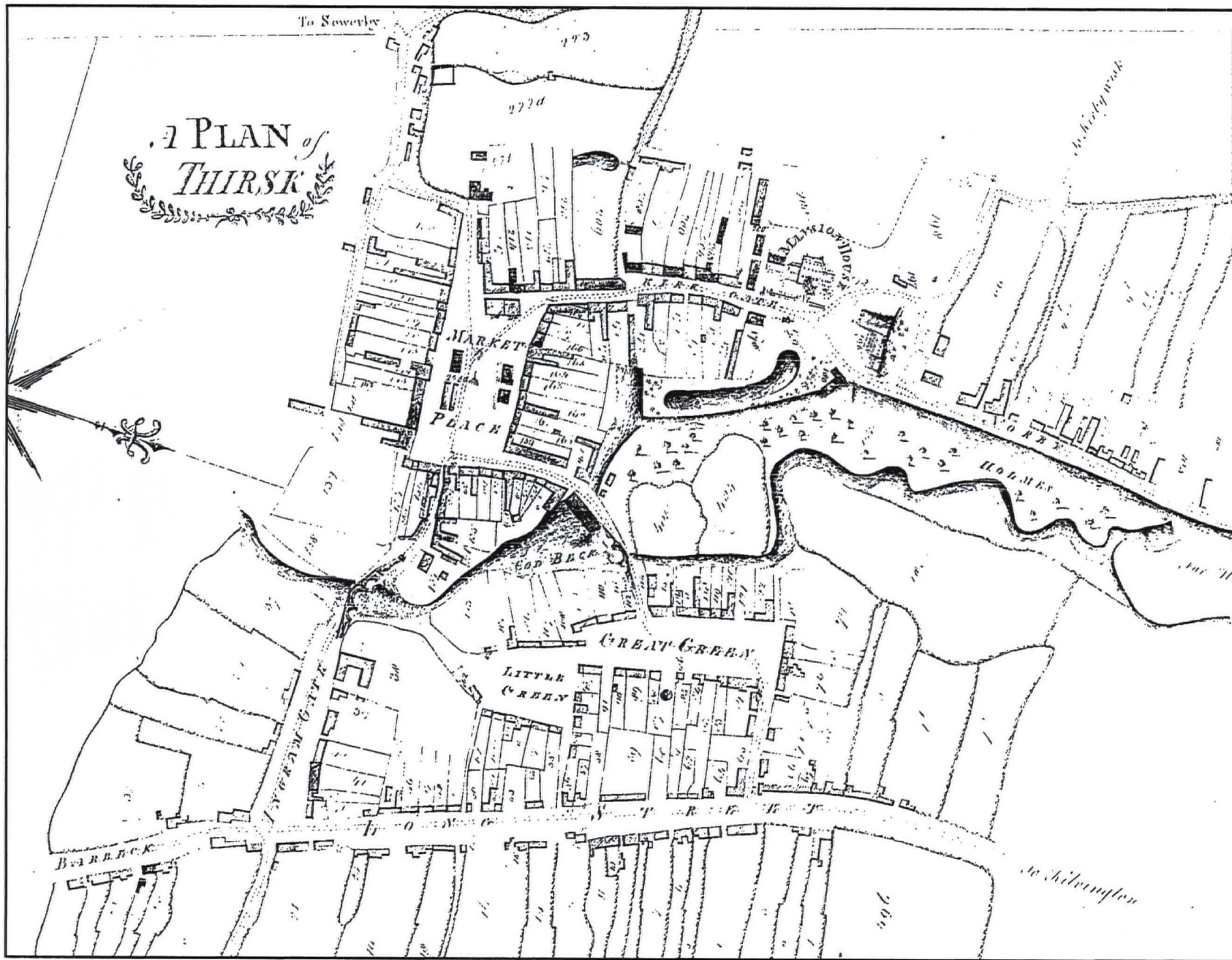


Figure 6. Extract from an 1803 Plan of Thirsk.





Figure 7. Extract from an 1843 Plan of Thirsk.



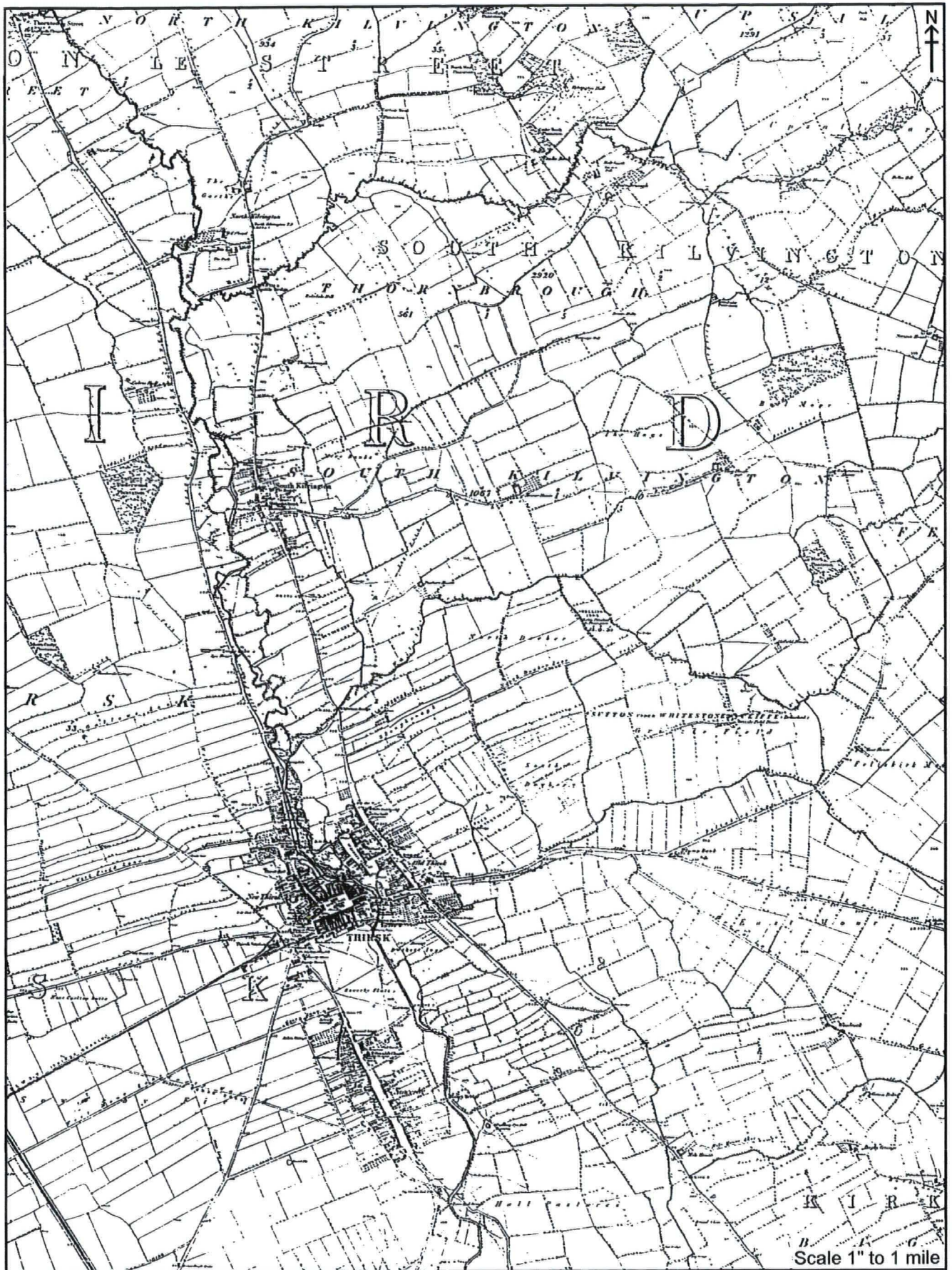


Figure 8. Extract from the 1856 Ordnance Survey First Edition Map.



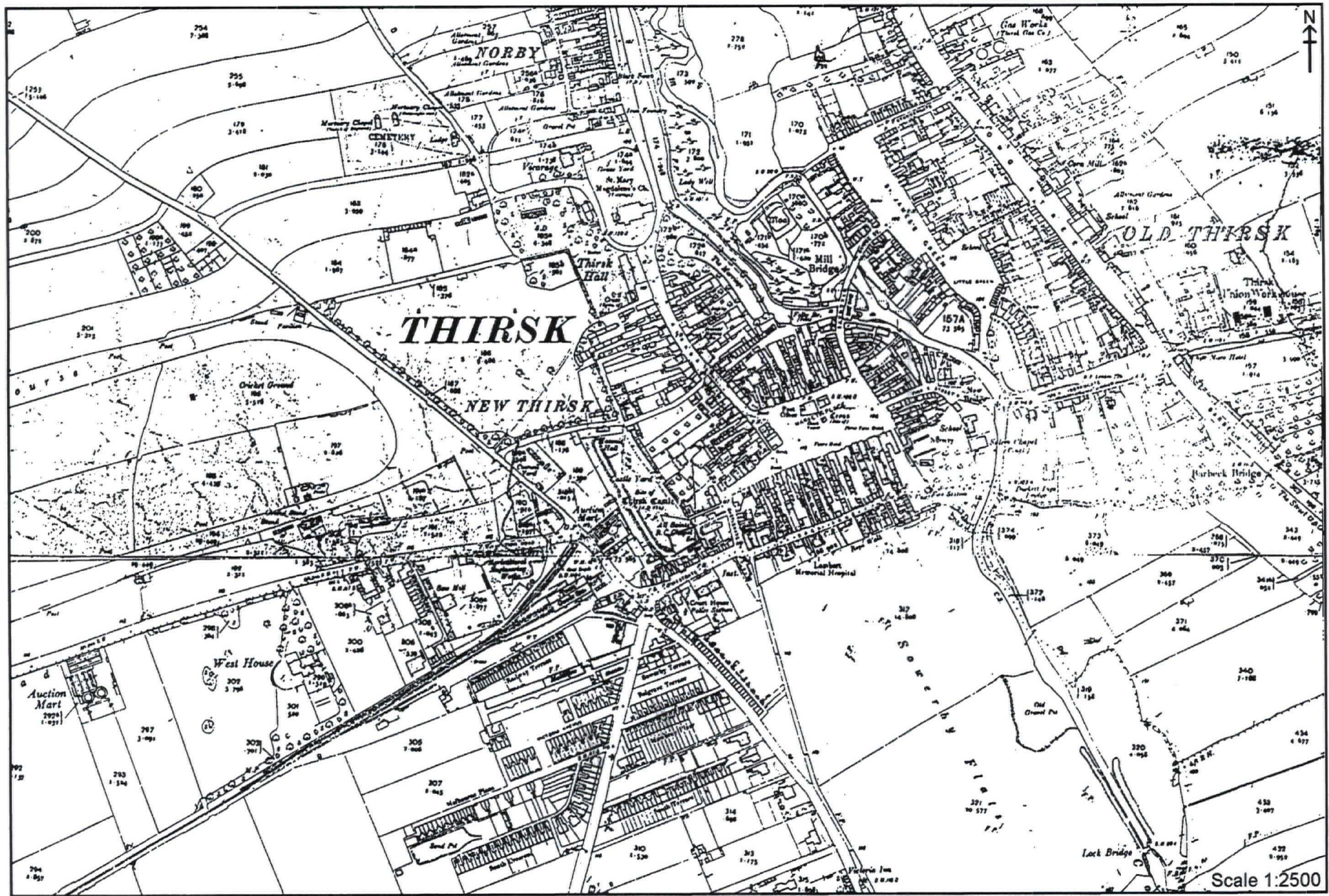


Figure 9. Extract from the 1912 Ordnance Survey County Series Map.





Figure 10. Extract from the 1914 Ordnance Survey Map.





Figure 11. Extract from the 1972 Ordnance Survey Map.





Plate 3. General view of site and Castle Garth. Facing south-east



Plate 4. General view of site and Castle Garth. Facing south-west





Plate 1. General view of site. Facing north



Plate 2. General view of site and Castle Garth. Facing south