



Figure 1. Site Location

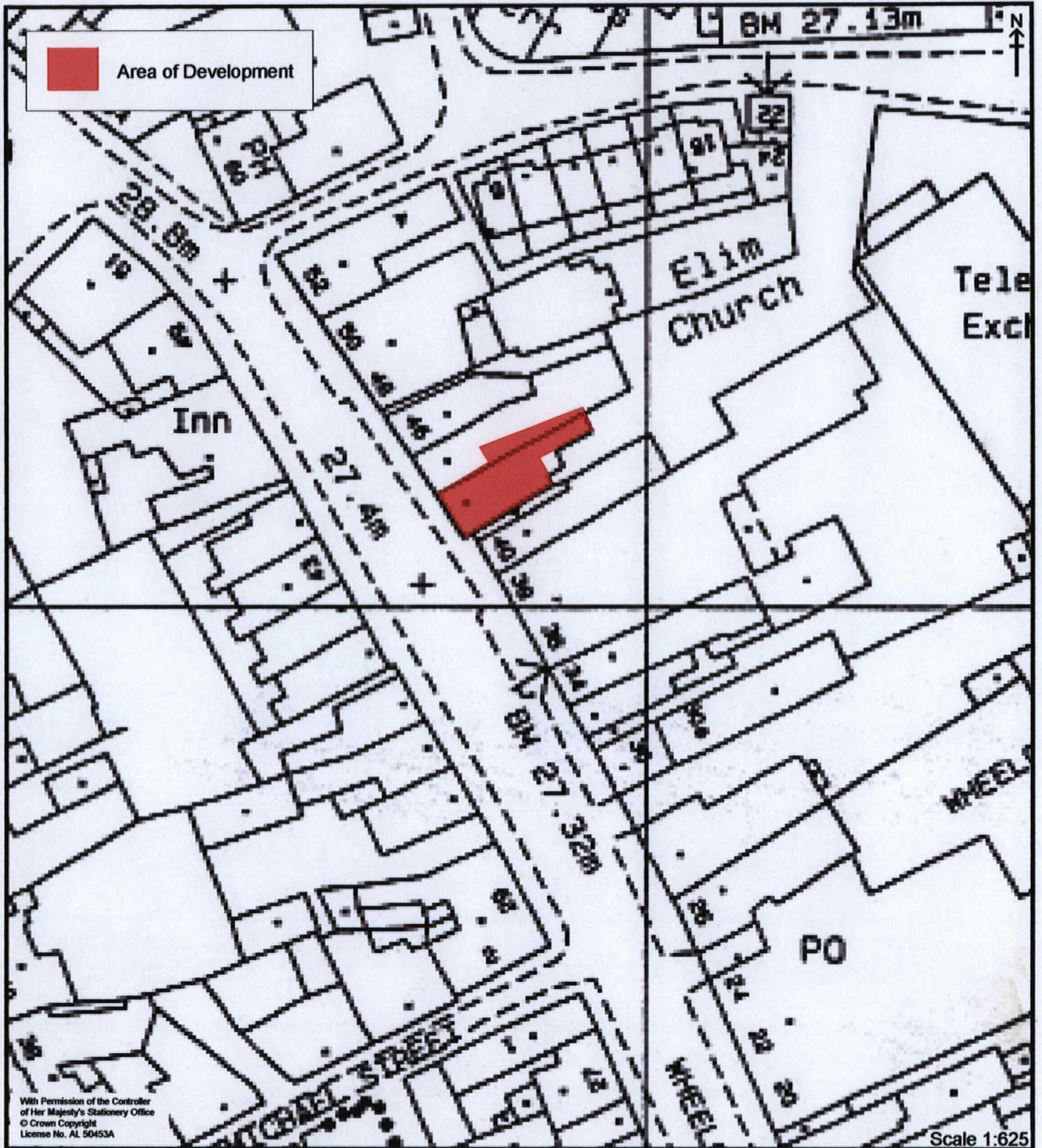


Figure 2. Proposed Development Area



Figure 3. Plan of the "Burrow of New Malton" by Joseph Dickinson, 1730

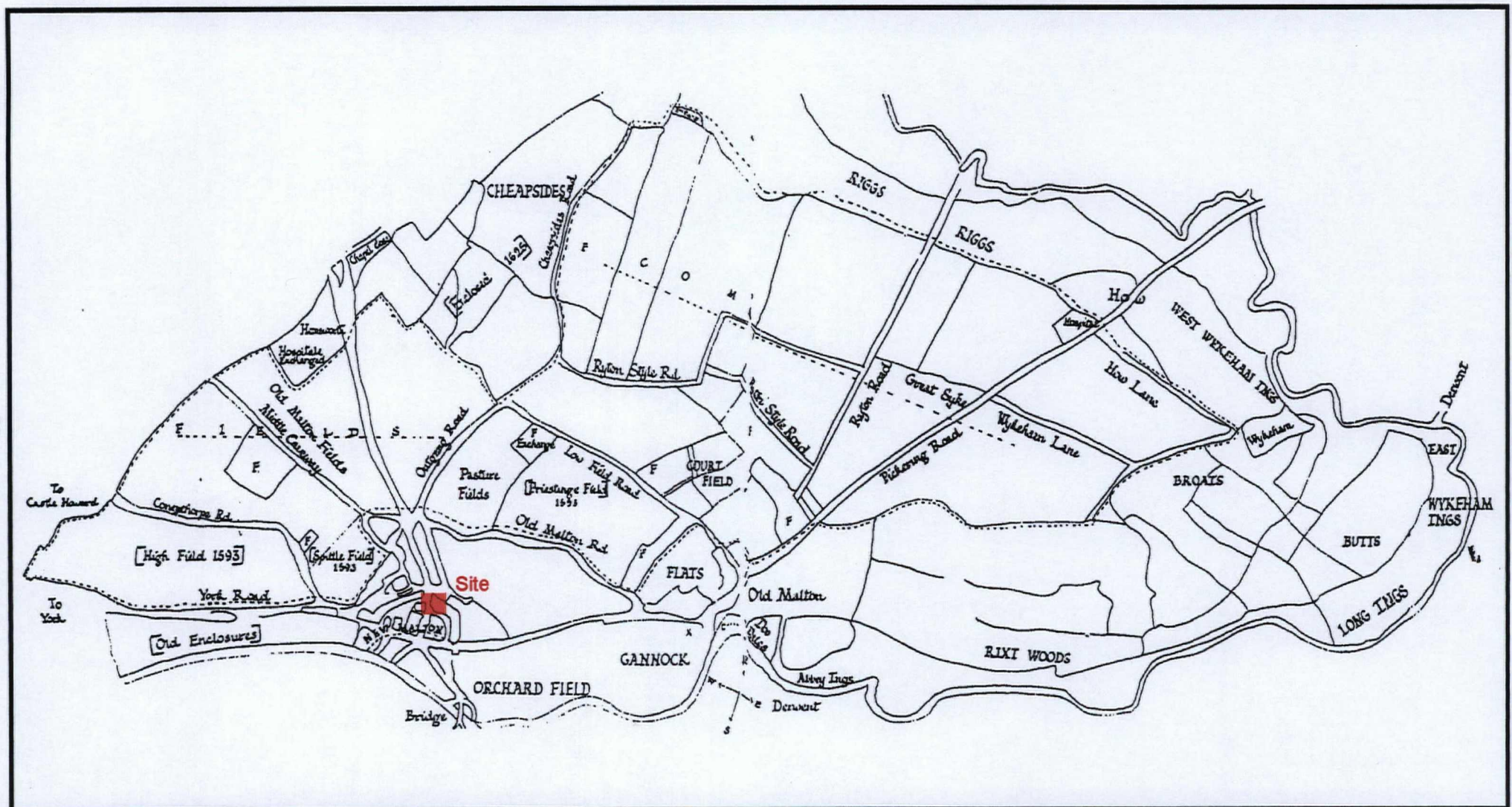


Figure 4. Plan of the Parish and Manor of Malton, 1795-1800



Figure 5. Plan of Malton from Thomas Hinderwell's Manuscripts, 1825

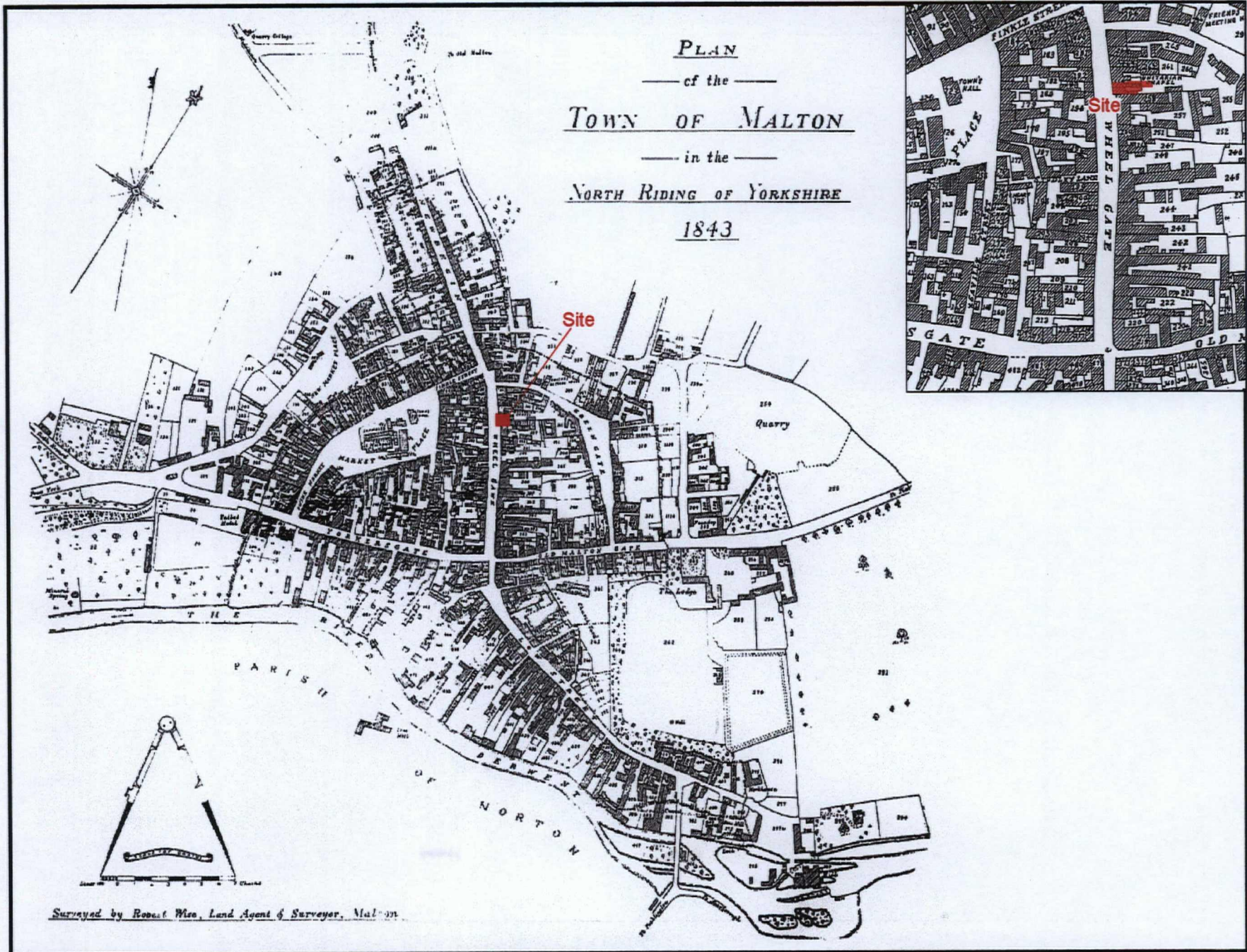


Figure 6. Robert Wise's Survey of Malton, 1843

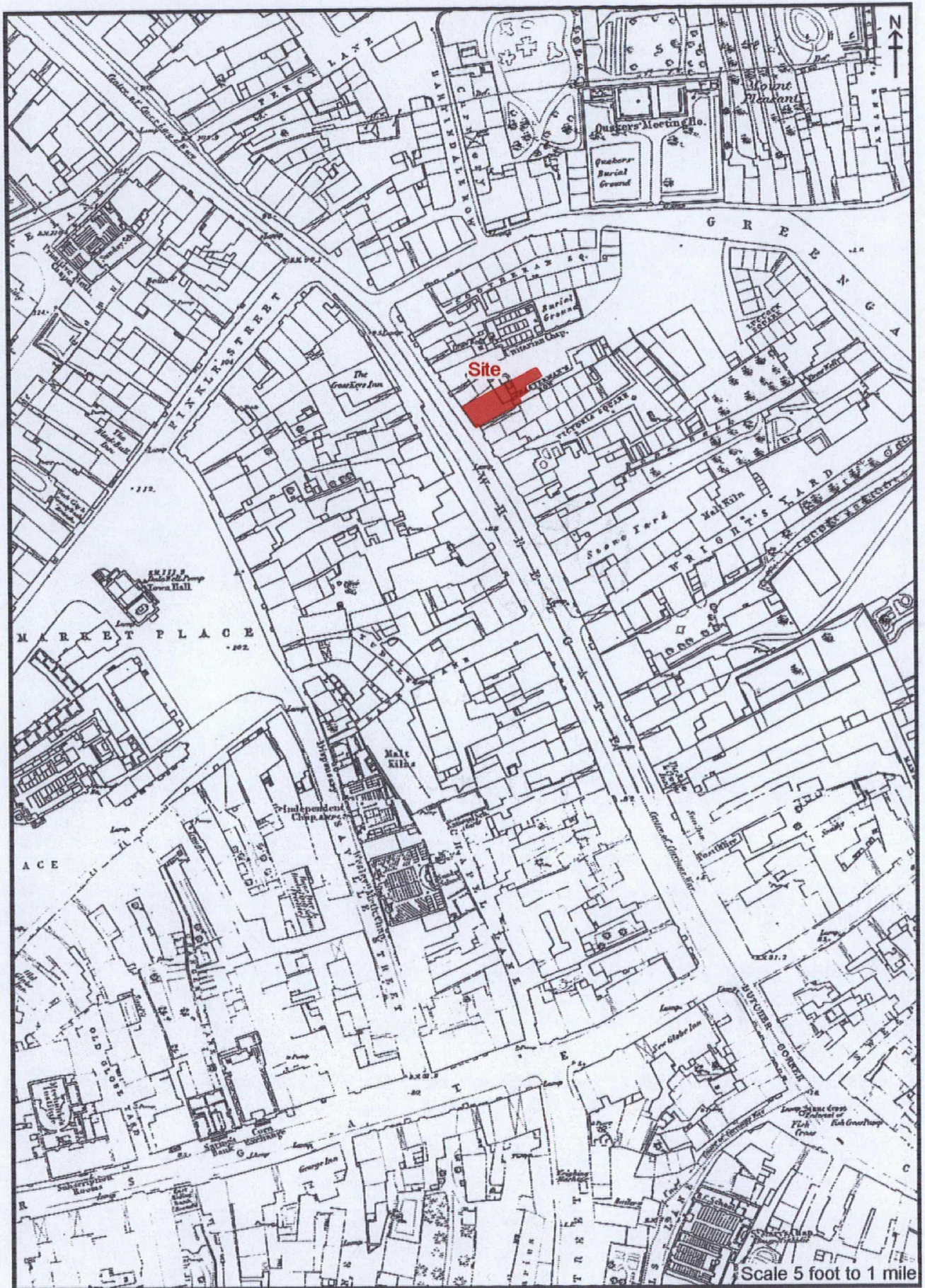


Figure 7. Extract from the First Edition Town Series Ordnance Survey Map, 1853

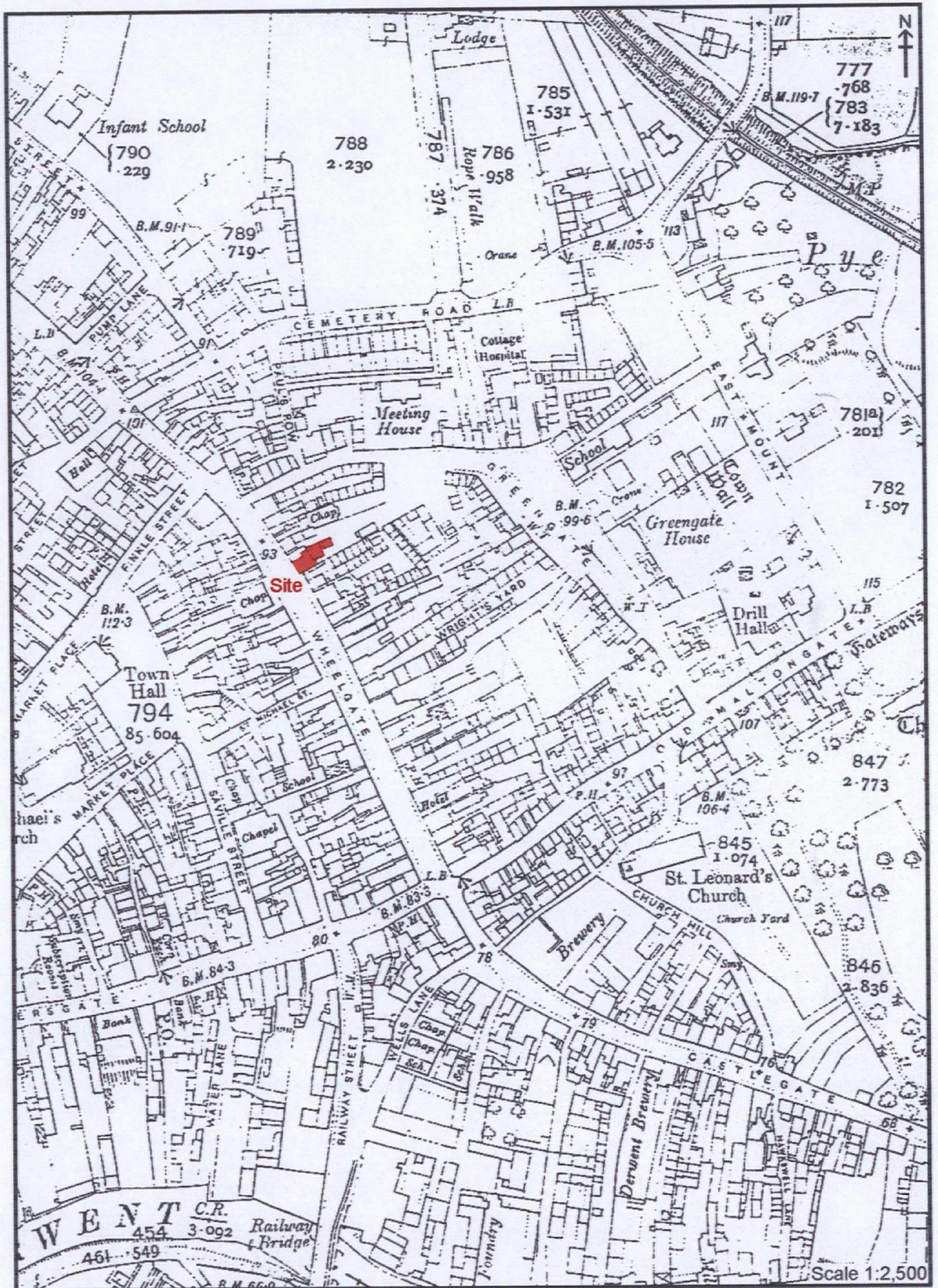


Figure 8. Extract from the Second Edition County Series Ordnance Survey Map, 1911



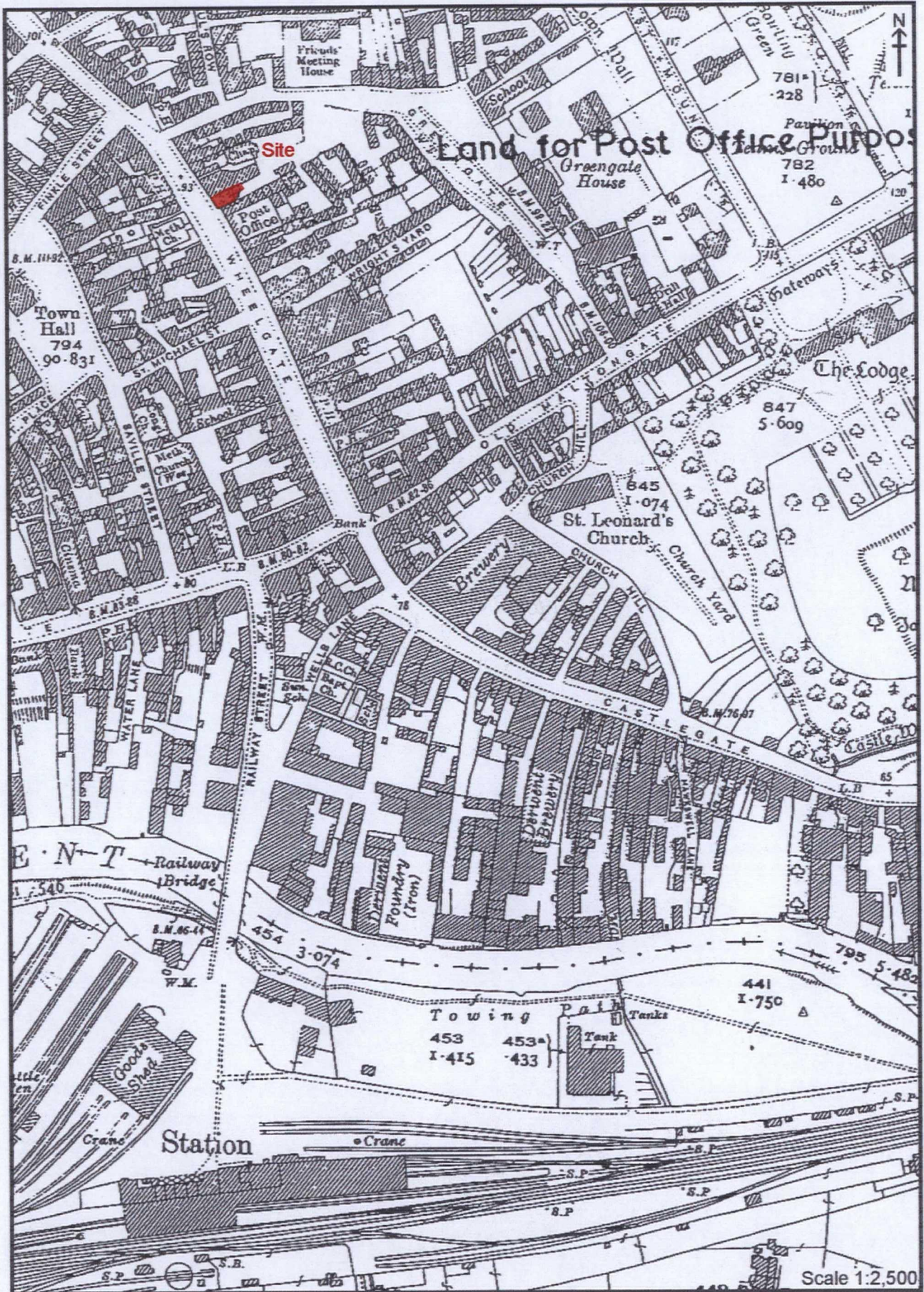


Figure 9. Extract from 1924 Edition Ordnance Survey Map



Figure 10. Extract from 1943 Edition Ordnance Survey Map

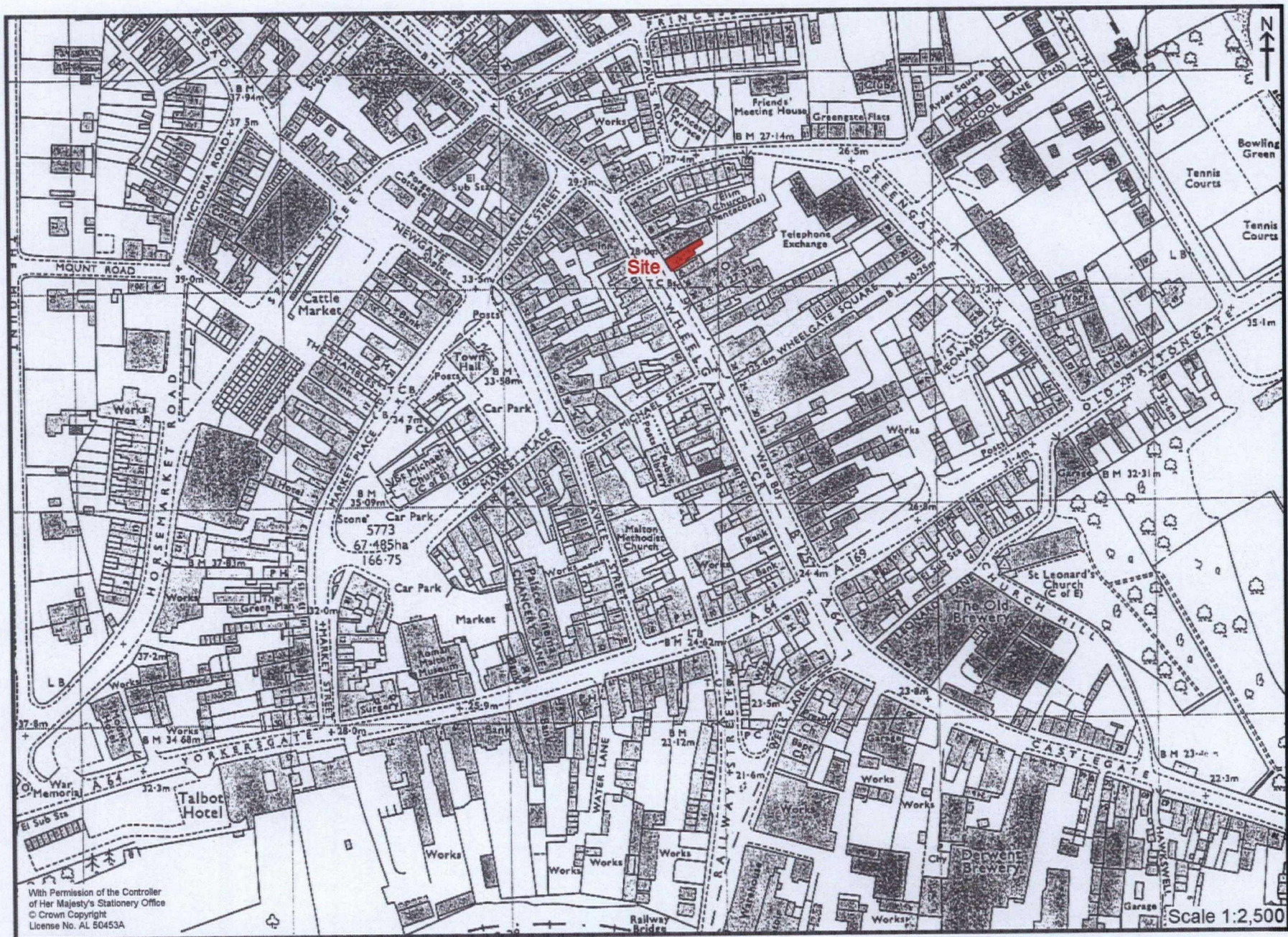


Figure 11. Extract from 1970 Ordnance Survey Map



Figure 12. Extract from 1999 Edition Ordnance Survey Map

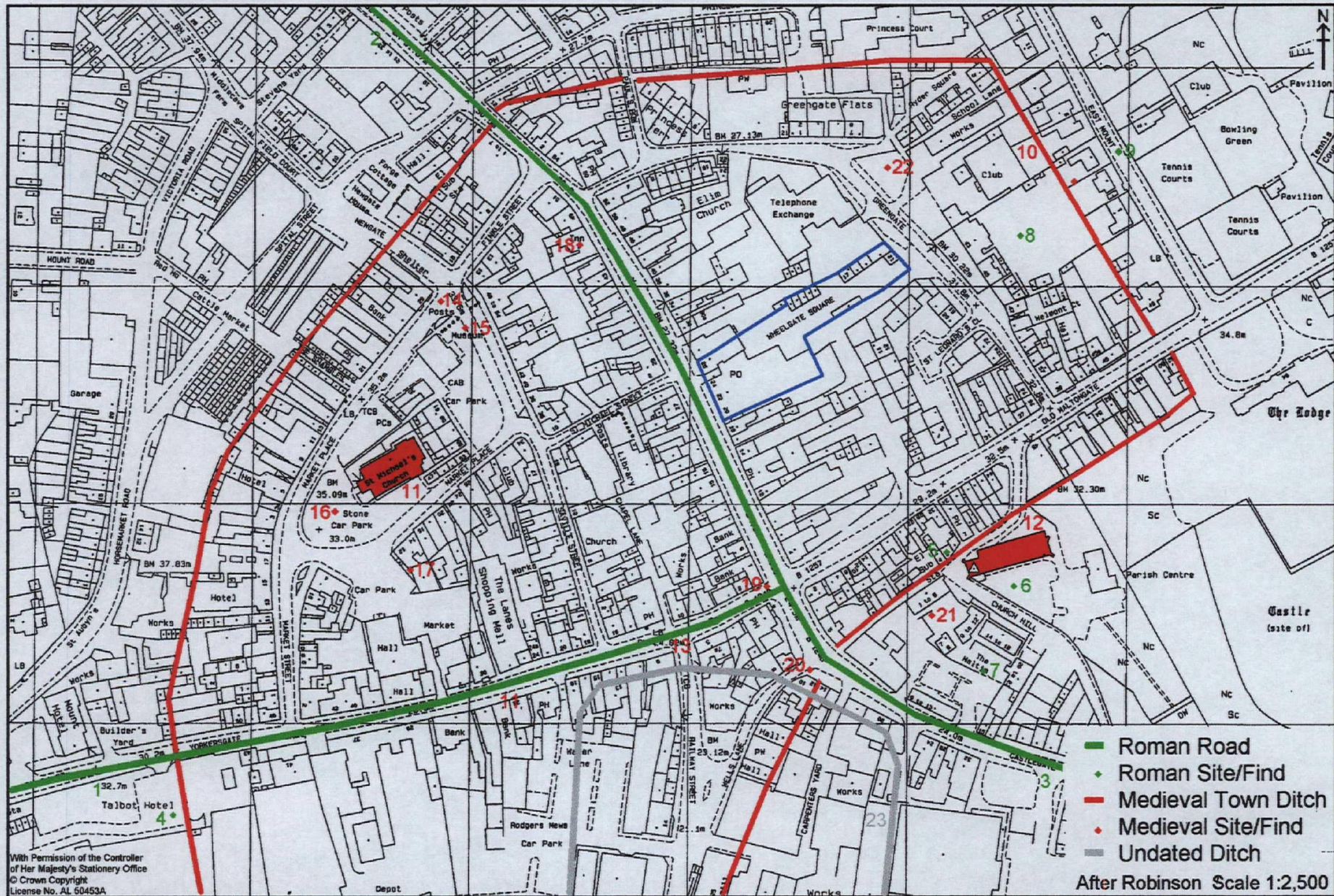


Figure 13. Plan of the Known Archaeological Sites and Finds.

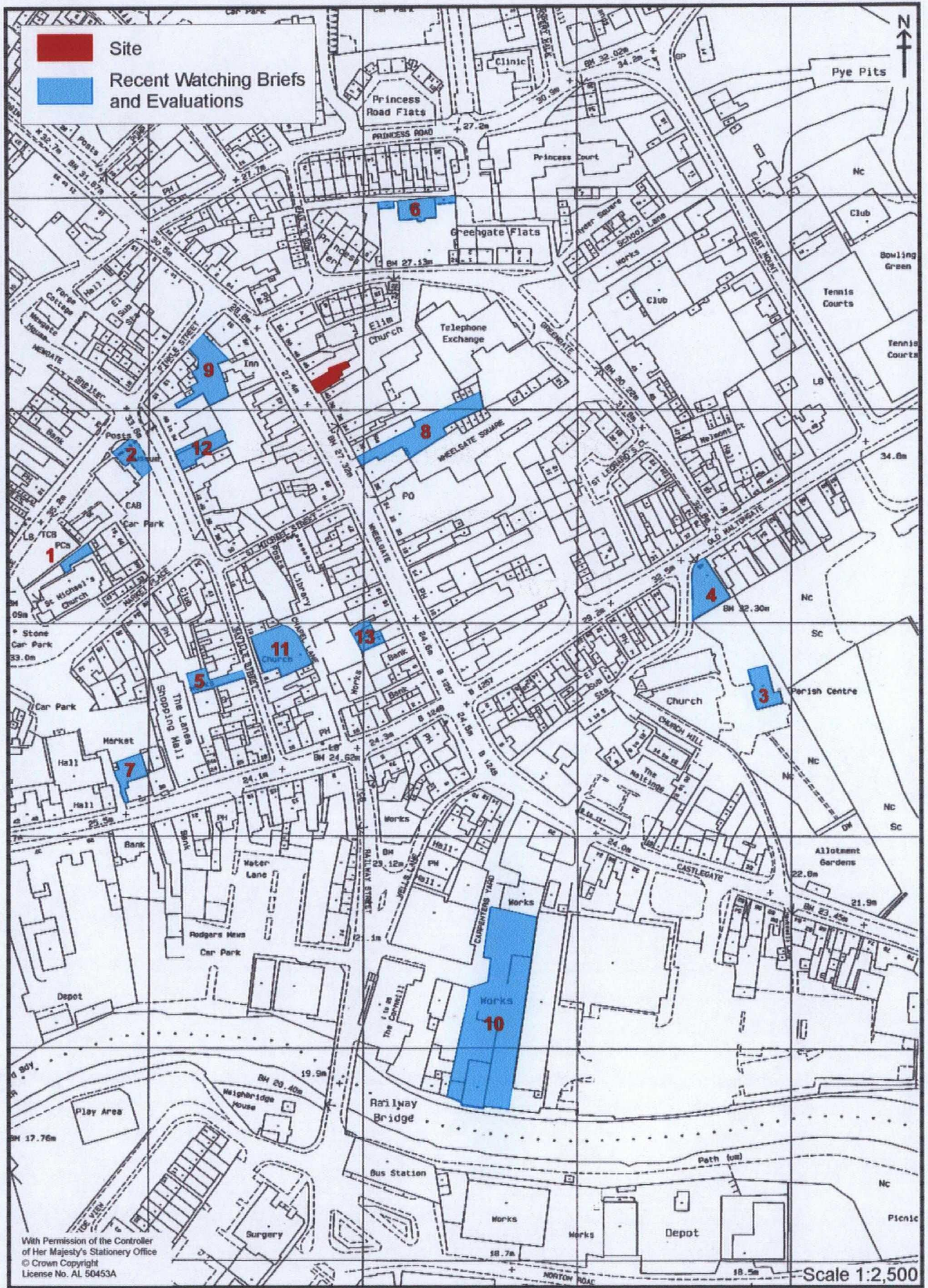


Figure 14. Plan of Recent Archaeological Evaluations and Watching Briefs

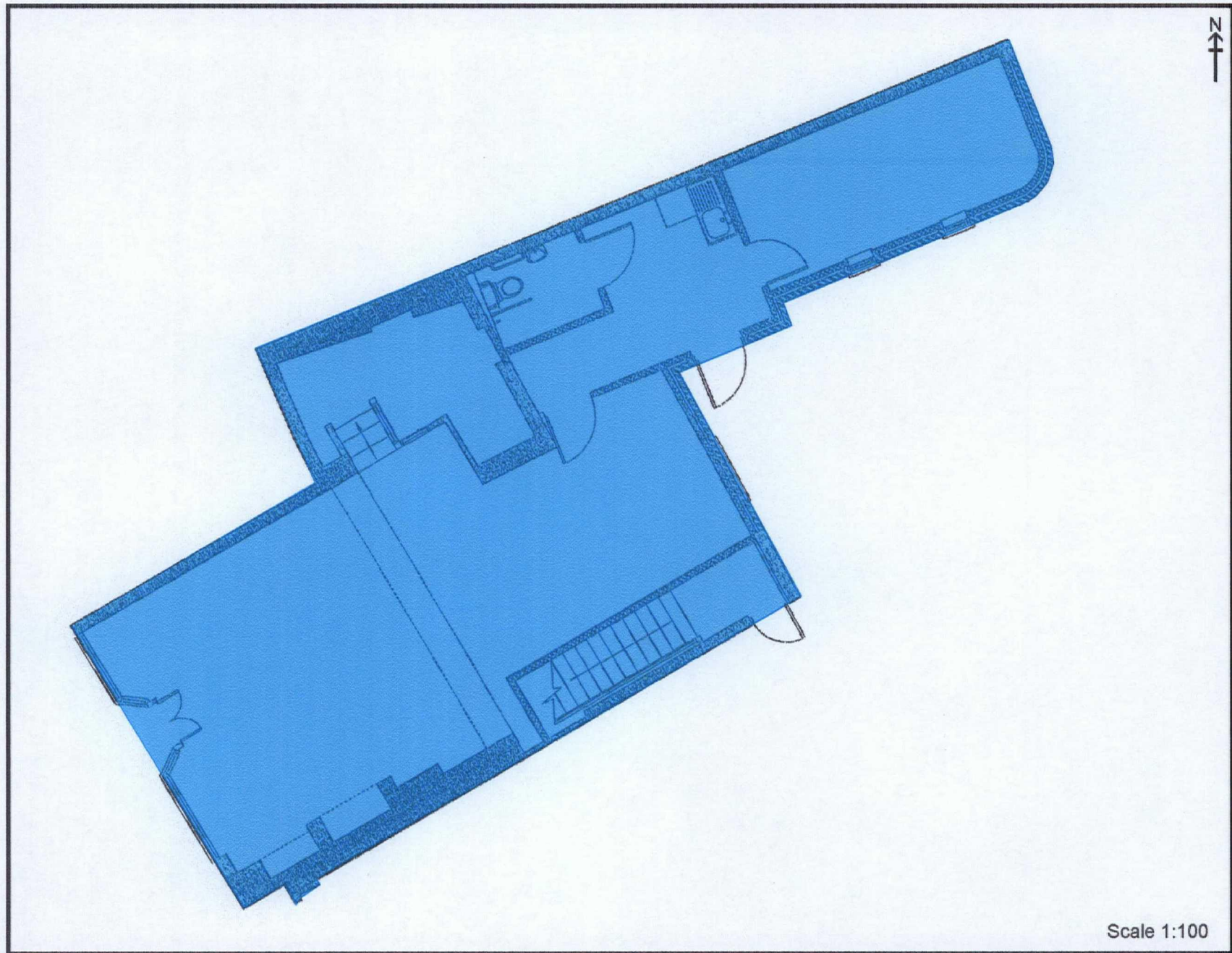


Figure 15. Proposed Development Layout

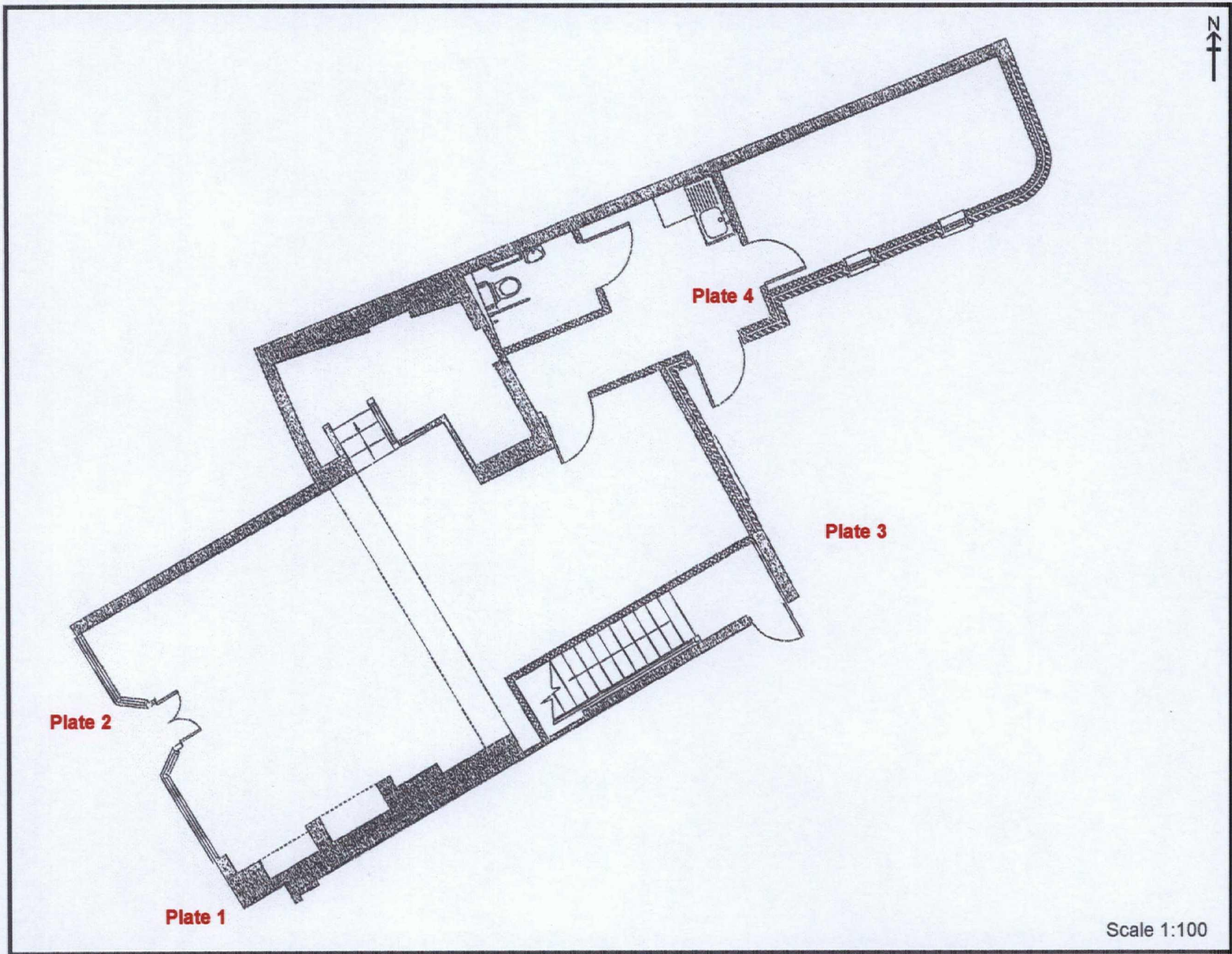


Figure 16. Location of Plates 1 to 4



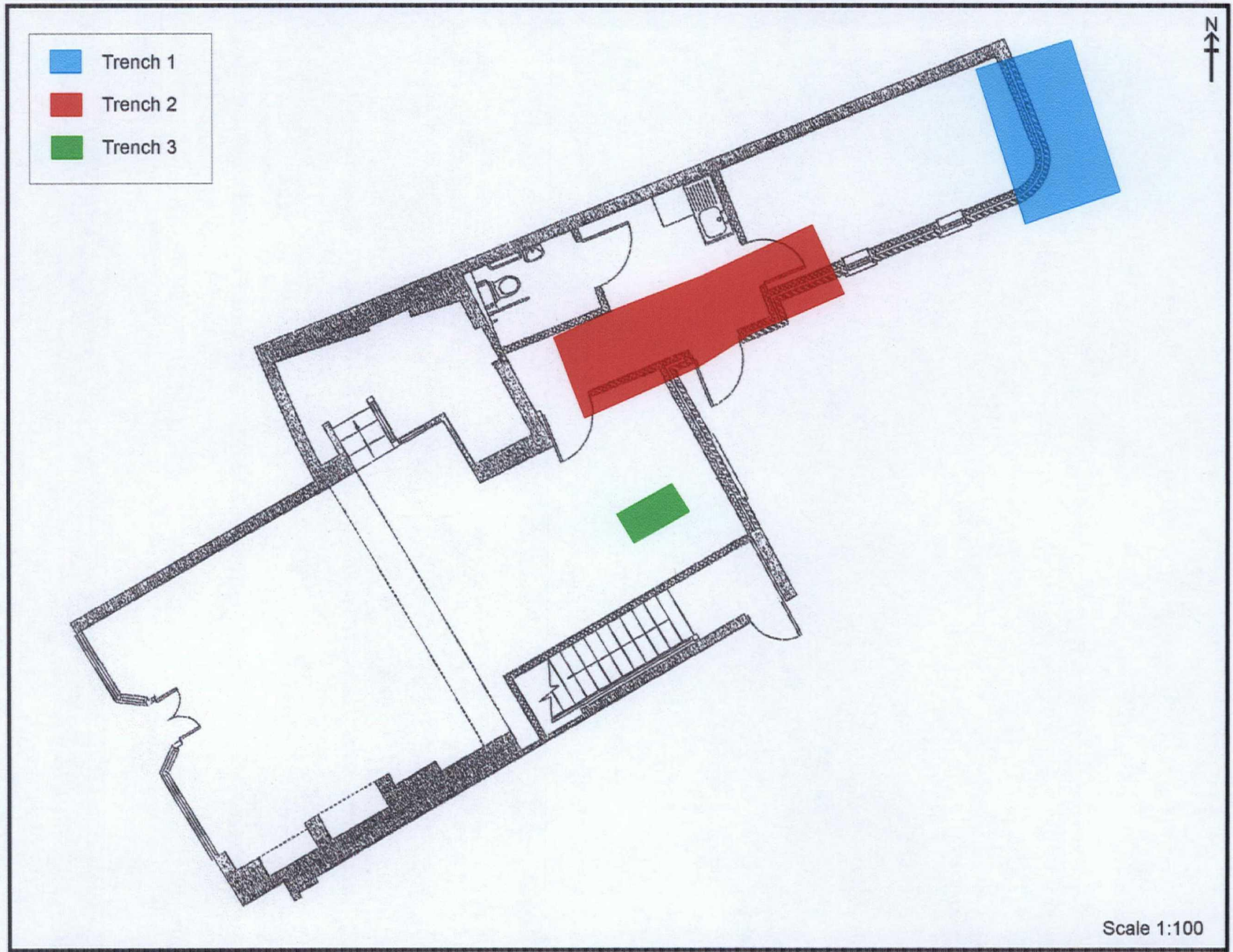


Figure 17. Trench Location Plan

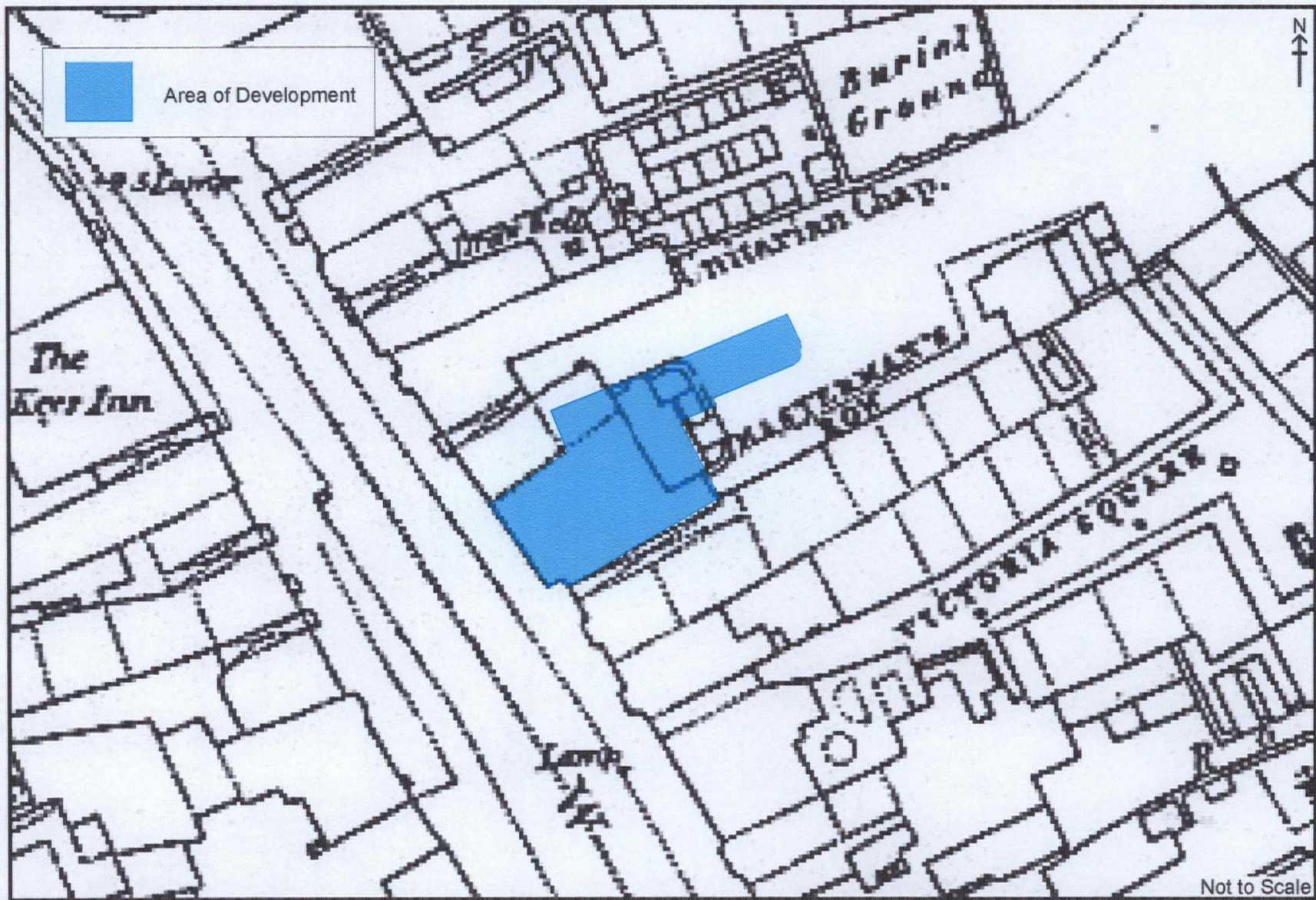


Figure 18. Enlarged extract from Ordnance Survey First edition, 1853. Original Scale Five Feet to One Mile

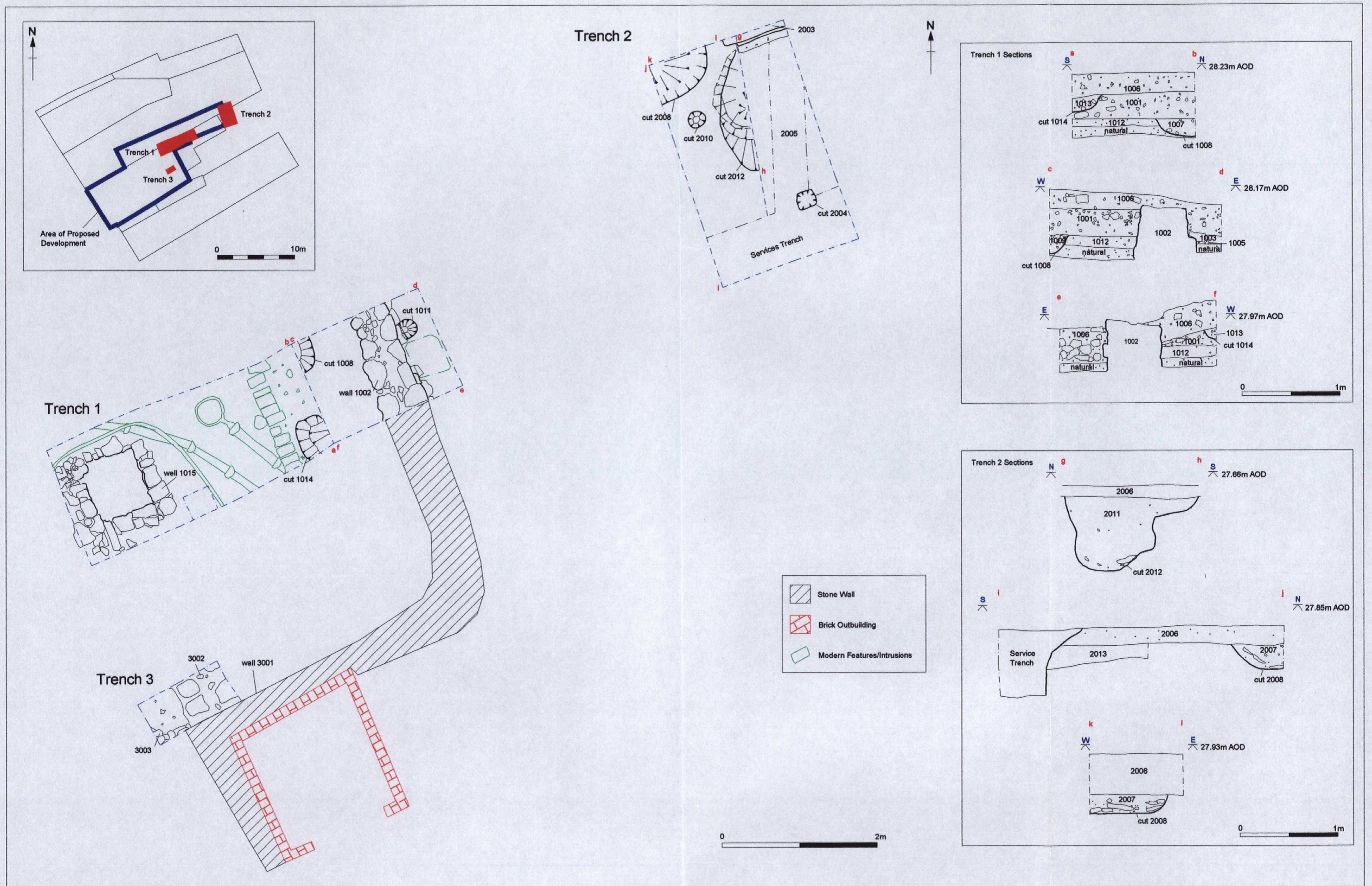


Figure 19. Plan and sections of Trenches 1-3 Features