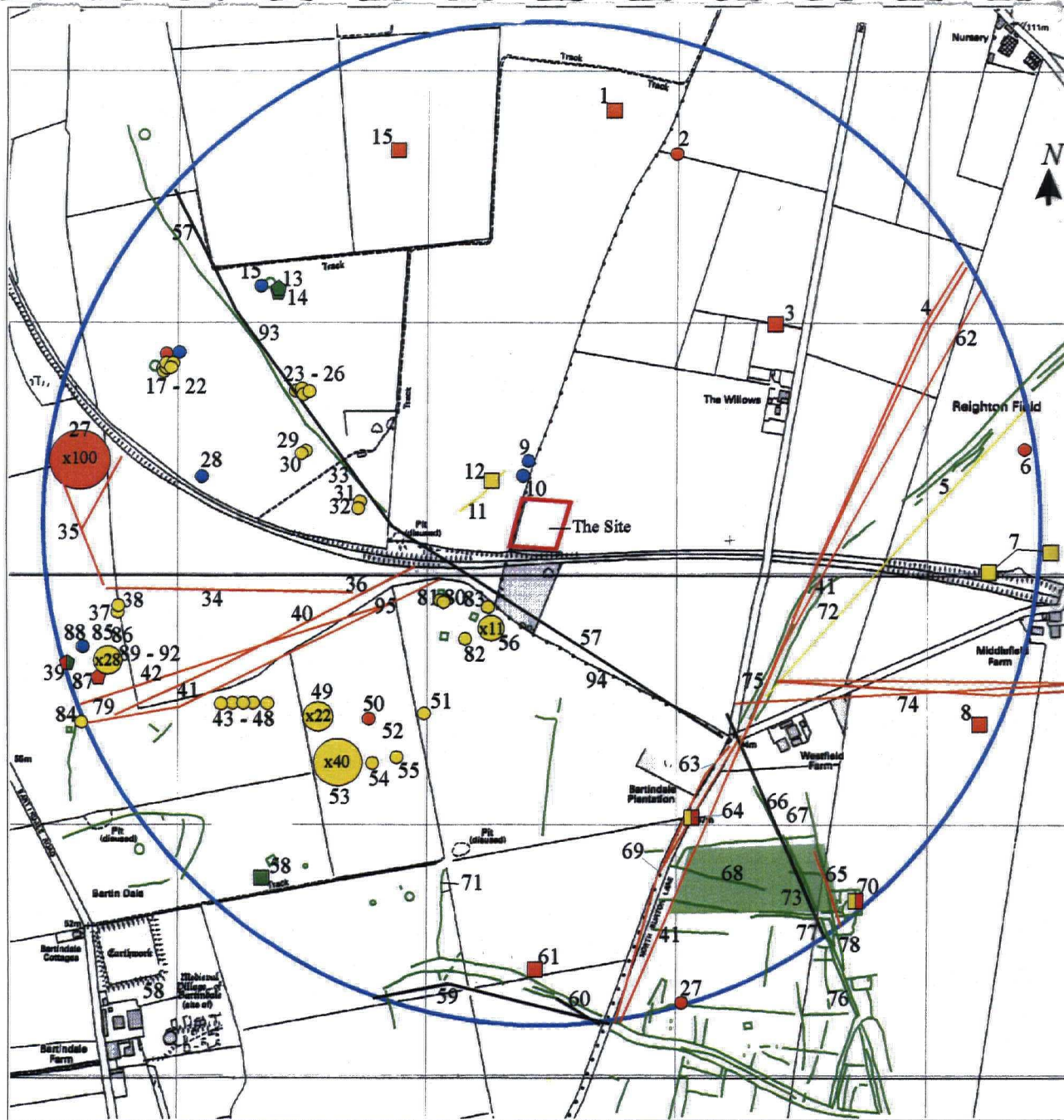


Figure 1: Site location at scale 1:25,000. The site is outlined in red.
(OS Copyright License No. A1 515 21 A0001)

Appendix 1: Colour Plates



Plate 1: General view of site taken from north-east corner, looking south-west. Hedge boundary on right hand side of picture corresponds with parish boundary



Funerary Monuments

- Iron Age
- Bronze Age
- Prehistoric

Settlement/ Agriculture

- Medieval/post-medieval
- Romano-British
- Iron Age
- Prehistoric

Other Features

- ◆ Medieval/post-medieval
- ◆ Romano-British
- ◆ Prehistoric

Boundary Features

- Iron Age
- Prehistoric
- Undated

Figure 2: The site is outlined in red and cropmarks are shown in green. Study area is defined by a blue circle. See accompanying key for SMR entries. At scale 1:10,000



Figure 3: Extract from 1st edition Ordnance Survey Map (dated 1851-1854).
The proposed development site is outlined in red.

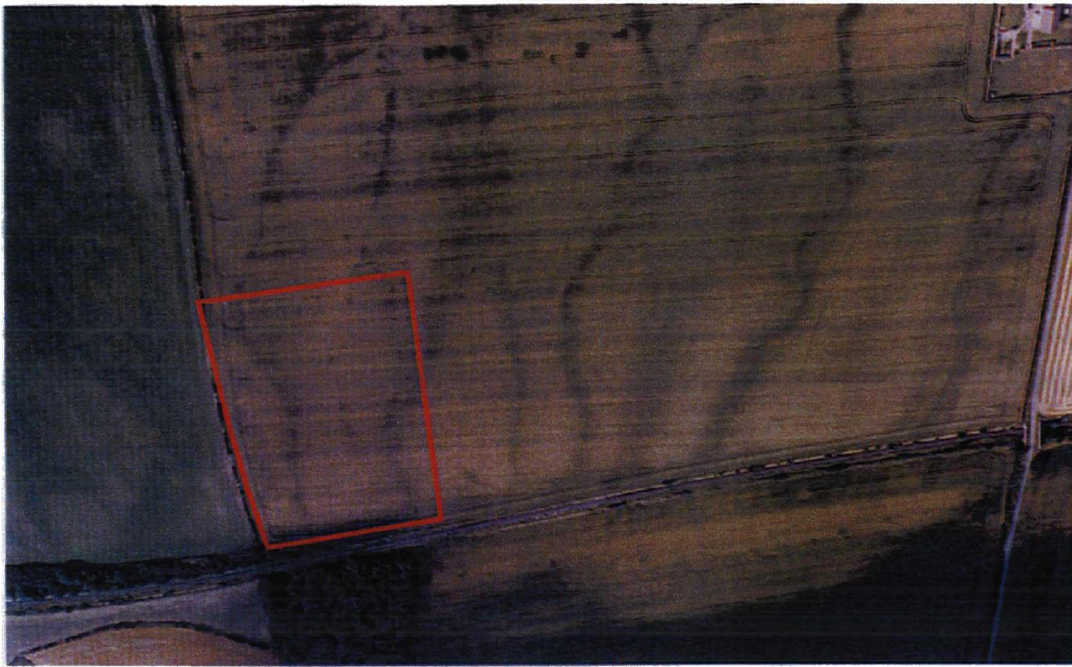


Fig. 4 : Aerial Photograph of proposed development area (outlined in red), with north at the top of the page. Note cropmark anomalies running north-north-east - south-south-west across the field. (Ref.:NMR 12549/32. Index No. TA 1174/22)



Fig. 5 : Aerial photograph of proposed development area (outlined in red), with north towards the top of the picture. (Ref.: Film No. OS/69046 Frame No. 049)

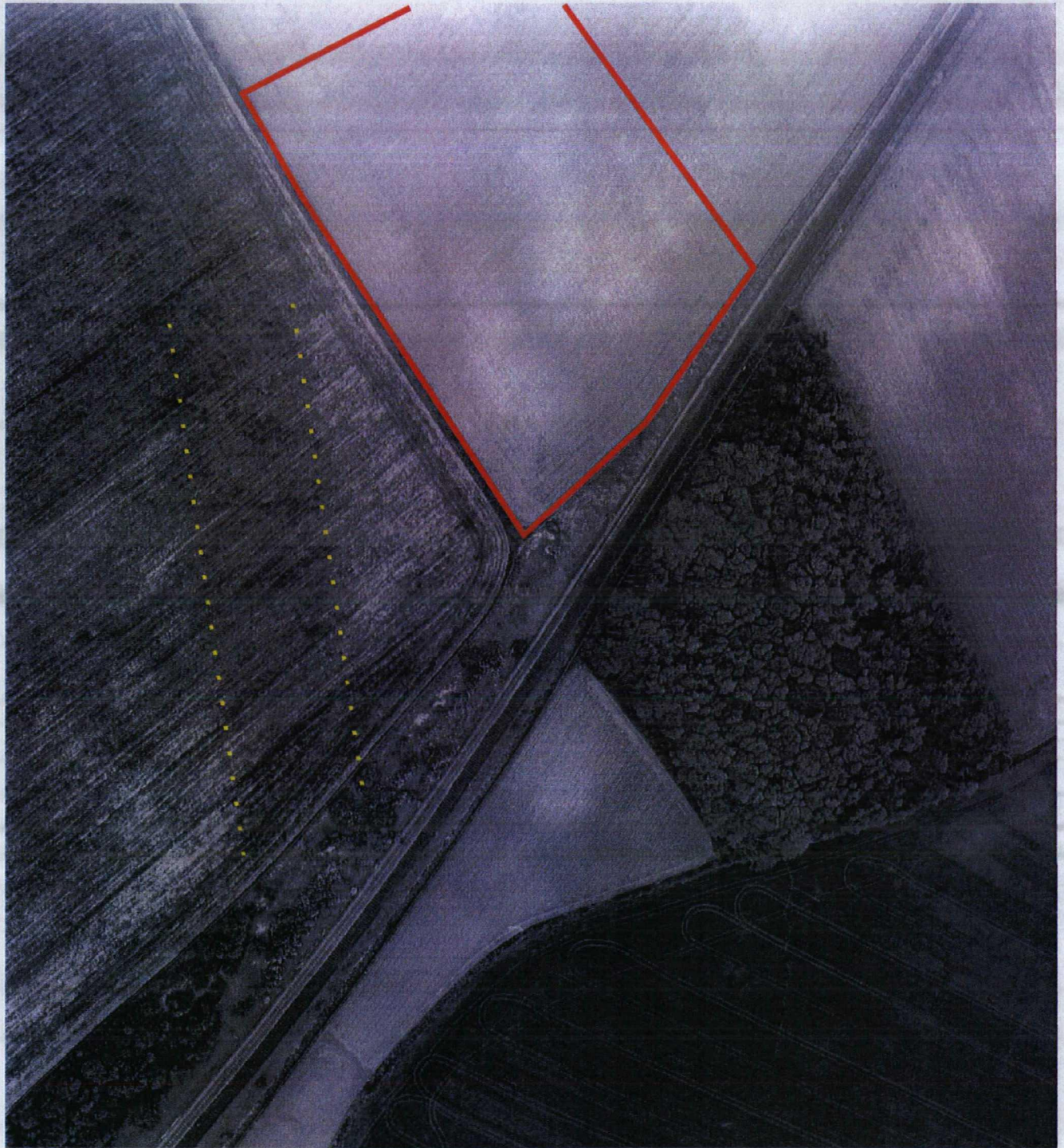


Figure 6: Aerial photograph of proposed development area (outlined in red). With north towards the north-west corner of the photograph. Note potential cropmark anomaly (outlined in yellow) running north-east- south-west to the south-west of the proposed development area.
(Ref: NMR 486/273. Index No TA 1173/6)

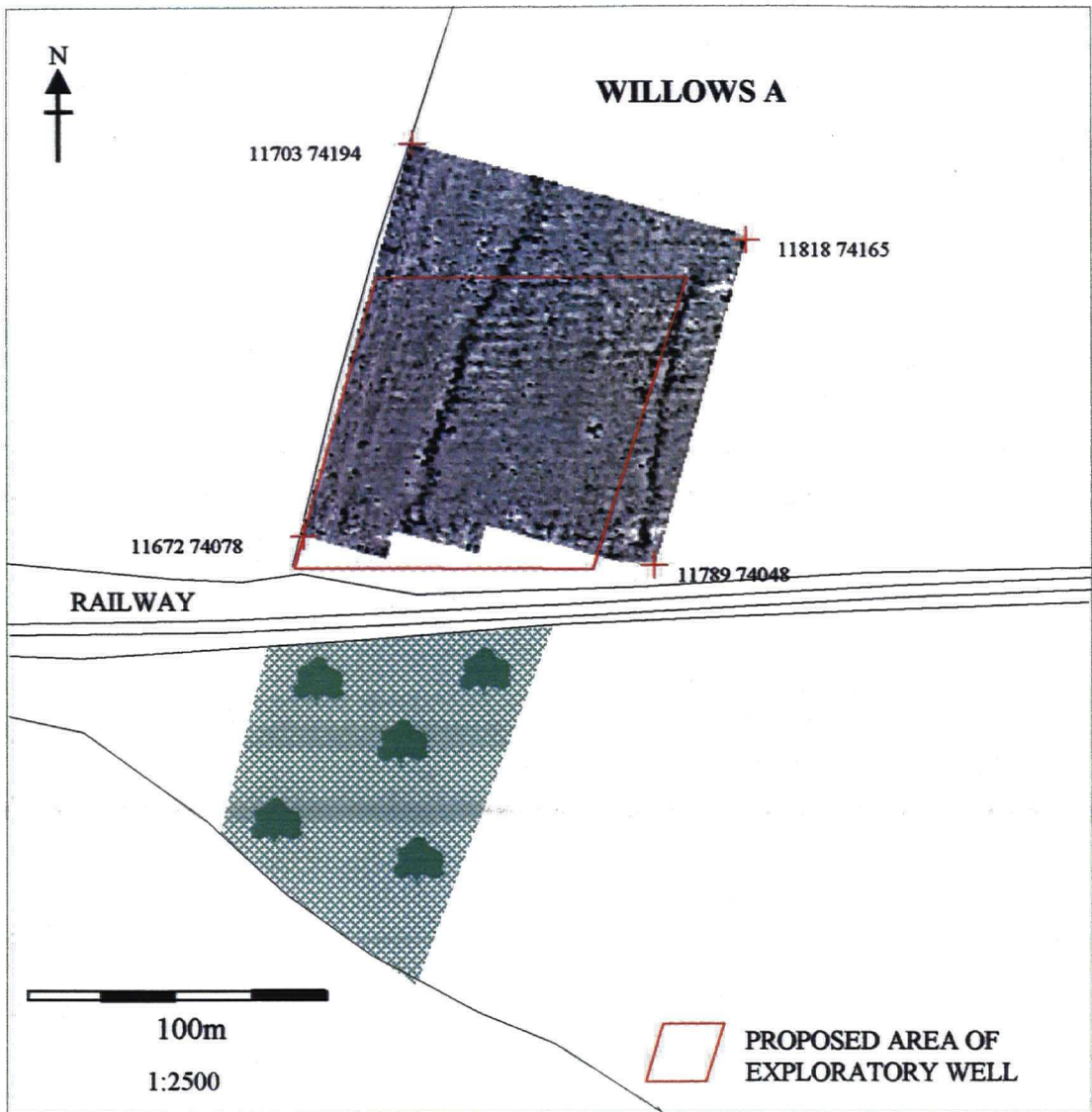
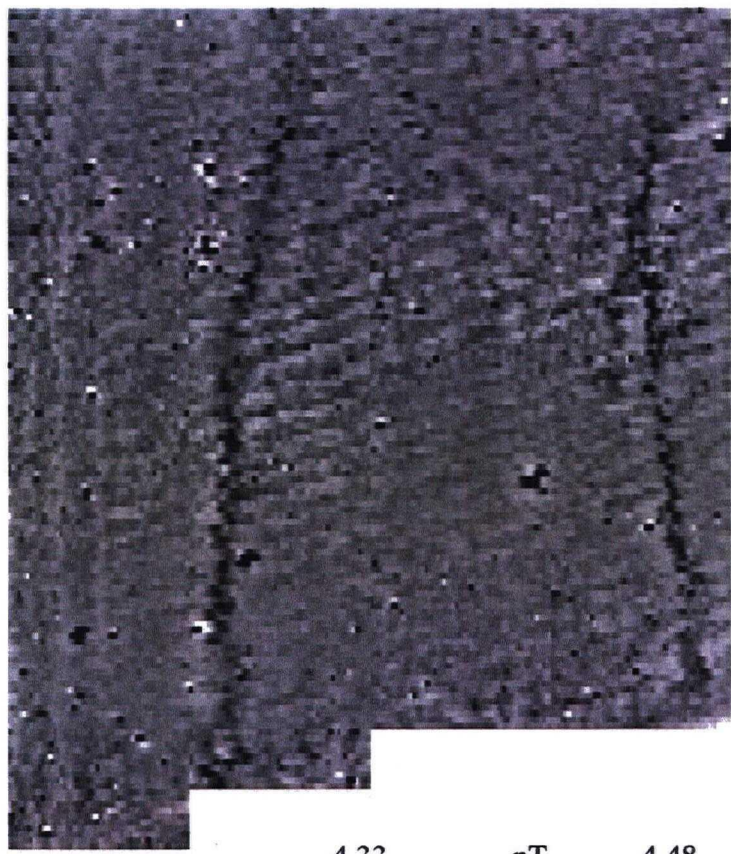


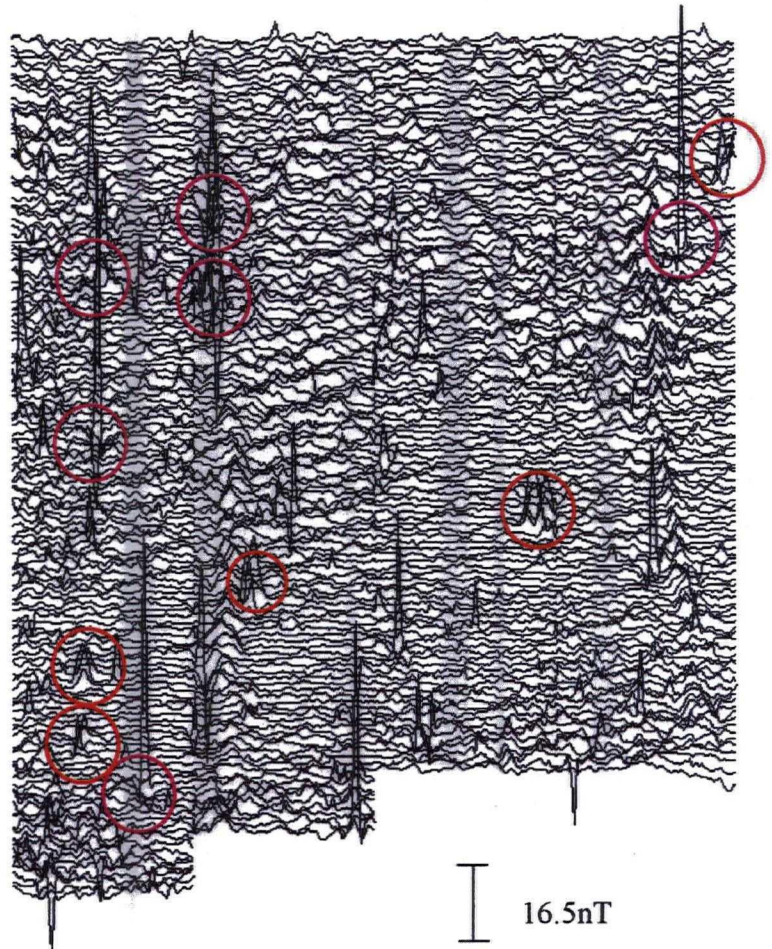
Fig. 7: Location of survey 1:2500

WILLOWS A



-4.33 nT 4.48

UNCLIPPED DATA



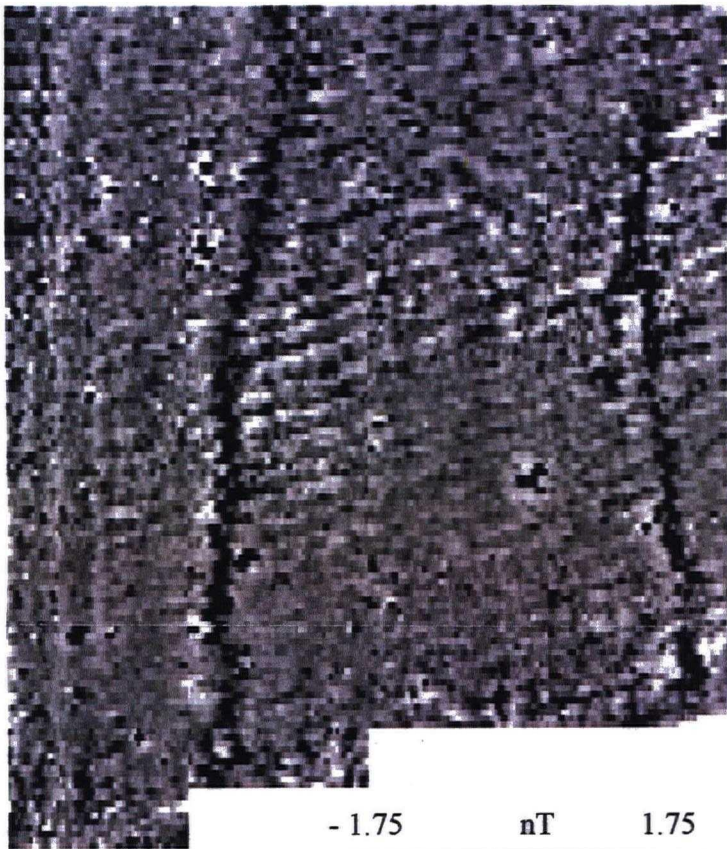
16.5nT

TRACE PLOT OF UNCLIPPED DATA (SHOWING EXAMPLES OF DISCRETE ANOMALIES)



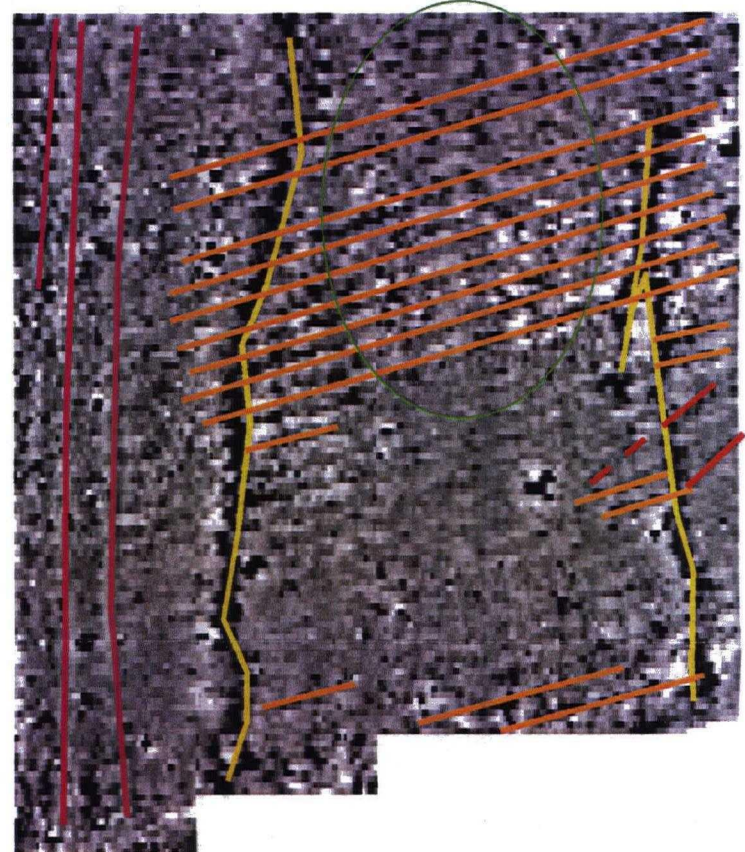
60m

N



-1.75 nT 1.75

GREYSCALE IMAGE OF ENHANCED DATA



INTERPRETIVE IMAGE

Fig 8: Greyscale and trace plots of raw and enhanced data with interpretive plan 1:1250