

NYCC HER	
SNY	8729
ENY	2327
CNY	
Parish	6064
Rec'd	

**YORK ARCHAEOLOGICAL TRUST
for Excavation and Research Ltd.**

PROJECT REPORT 1990.5000

LOCATION: Sutton Farm, Aldborough

GRID REF: SE 40626657

6064.

CLIENT: Messrs E & M.R. Craggs & Sons

Sutton Farm, Aldborough 1990.5000 NGR SE 40626657

Sutton Farm lies in the north-west quarter of the Roman town of Aldborough (Isurium). Scheduled monument consent was obtained by the land owner to construct a new silage clamp, effluent drain and slurry lagoon, with the requirement that an archaeologist be in attendance as the work proceeded.

The perimeter drain 19/04/90

A perimeter drain trench was excavated to a depth of 0.45m on the four sides of a new silage clamp platform which was 13.5m x 21m. Limestone hardcore had previously been spread across the area and the trench only penetrated through this material on its western side where dark slightly organic soil was uncovered, disturbed by dumps of modern farm rubbish. No archaeological deposits were uncovered.

Effluent Delivery drain 19/04/90

From the south-west corner of the perimeter drain a 30m long trench was excavated for a delivery drain ending in a manhole pit. This trench was excavated to a depth of 0.90m, the top 0.60m consisting of dark silty soil interspersed with modern farm rubbish. Beneath this was a 0.20m thick band of red sandstone blocks many having disintegrated to sand, possibly resulting from occupation of the area in the Roman period. In the middle of the length of trench a band of large cobbles occurred in place of and slightly deeper than the red sandstone. At the base of the trench beneath the sandstone was a slightly more sandy loam. No other archaeological remains were found.

Interceptor pit 21/06/90

A pit 3.0m x 3.2m and 2.40m deep was excavated partly by machine, adjacent to the slurry lagoon and delivery drain. Modern rubble survived to a depth of 0.30m. Beneath the rubble was a trench cut running east west and filled with loamy soil apparently of modern origin. Silty loam was found beneath the rubble over the rest of the trench and containing some animal bone. At a depth of 0.60m was a similar layer of disintegrating red sandstone blocks and sand to that found in the effluent delivery drain trench, possibly resulting from Roman building demolition or occupation. A lower layer of sandstone blocks and sand up to 1.0m thick was separated from this upper layer by a 0.10m thick layer of brown silty loam. Two pieces of painted wall plaster (presumably Roman) and a piece of 2nd century Samian pottery were found in this layer of sandstone. To the west side of the pit the base of this layer of red sandstone also contained pieces of yellow sandstone also disintegrating to sand. Beneath this was another layer of dark silty loam containing many animal bones. The lowest deposit in this pit was yellow sand which may be the natural sub-soil.

It would appear that in this pit up to 2.4m of deposits lie above the natural sub-soil of which 1.9m possibly represent Roman occupation. Although no evidence for structures was found it is possible that in the post Roman period many of the earlier buildings were demolished resulting in these bands of sandstone blocks.

Slurry lagoon

A large foundation trench was excavated for a new slurry lagoon to the north of the interceptor pit. It was excavated to a maximum depth of 0.50m through loamy soil, the base just cutting through the top band of red sandstone found over the rest of the site. No archaeological features were found.

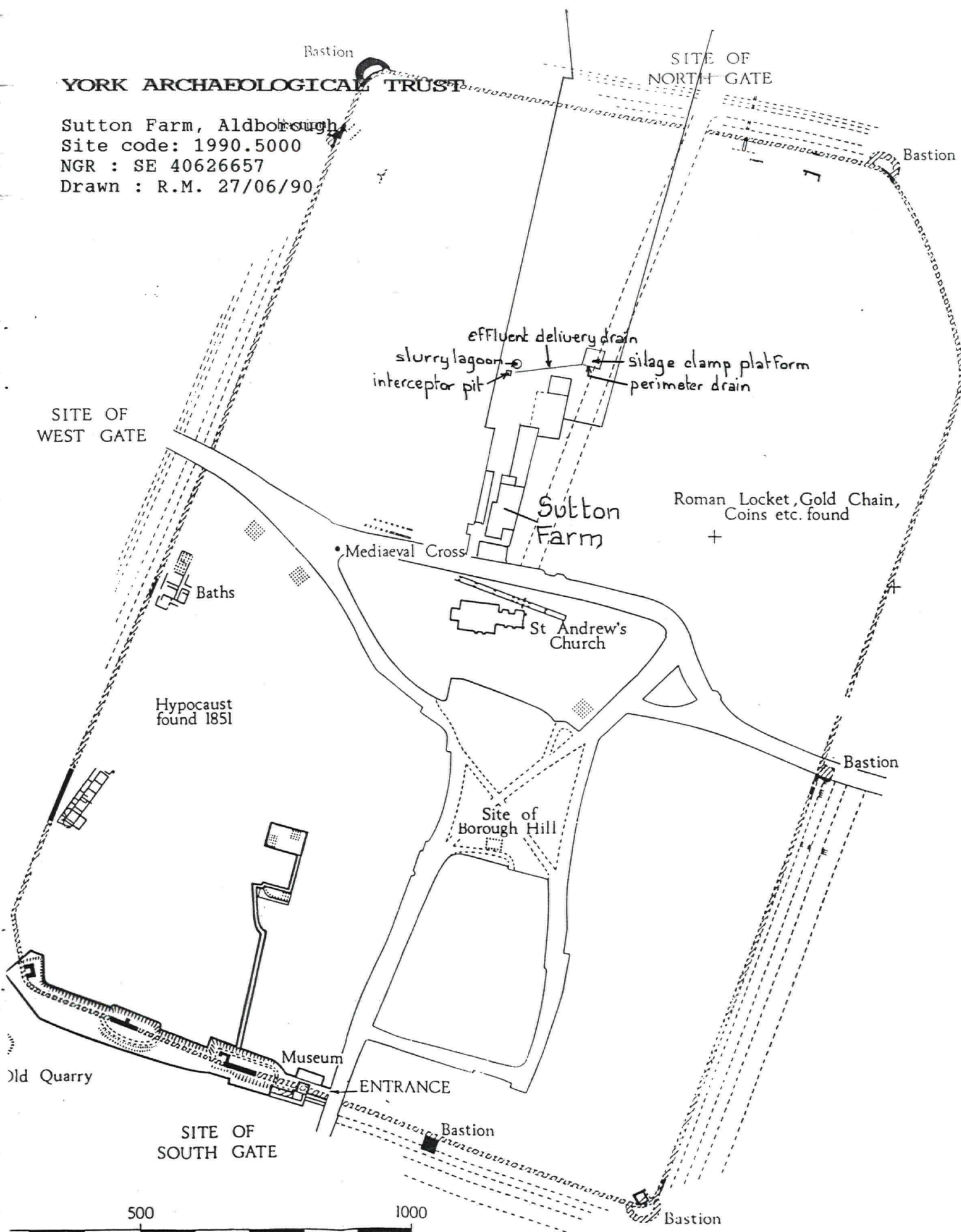
YORK ARCHAEOLOGICAL TRUST

Sutton Farm, Aldborough

Site code: 1990.5000

NGR : SE 40626657

Drawn : R.M. 27/06/90



500

1000

SCALE OF FEET

0

100

200

SCALE OF METRES

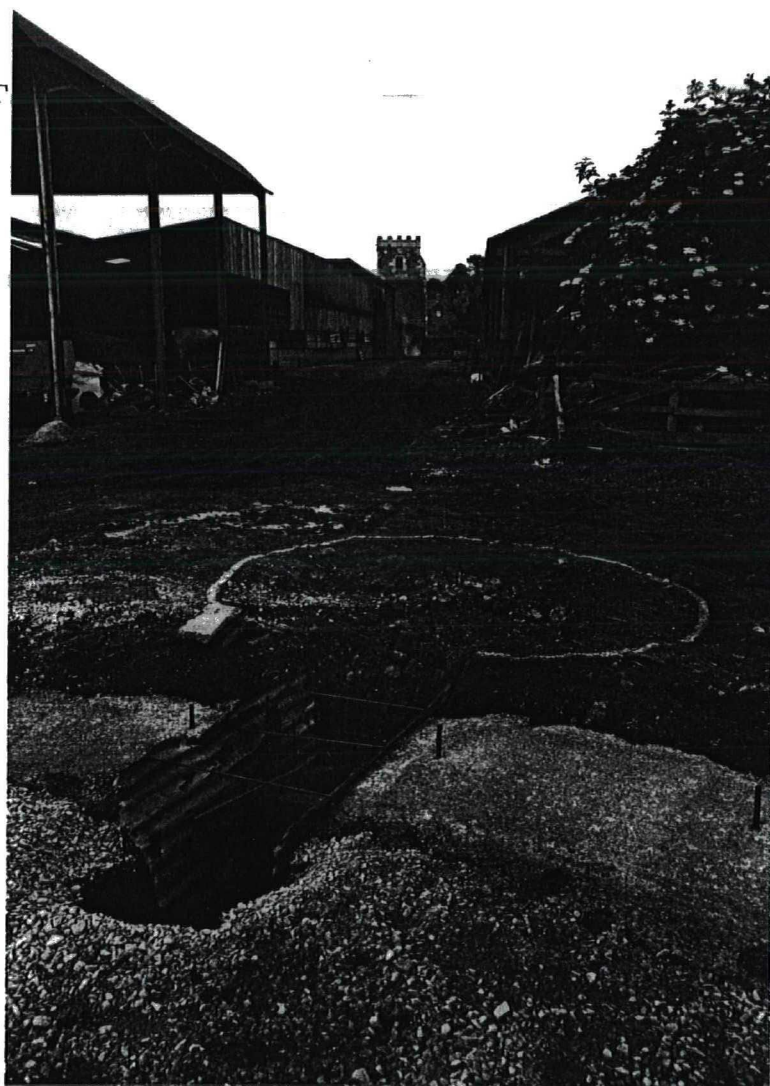
YORK ARCHAEOLOGICAL TRUST

Sutton Farm, Aldborough.

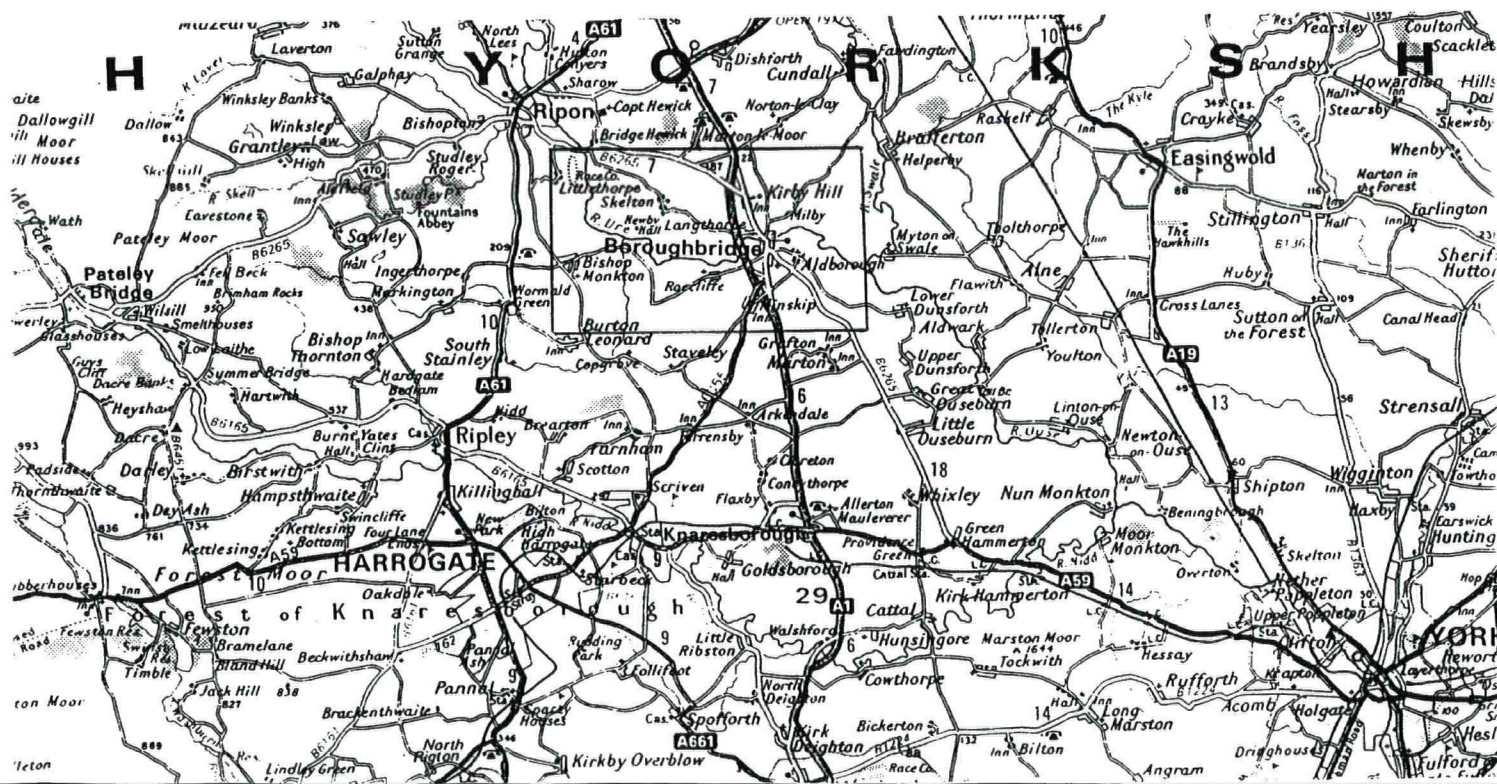
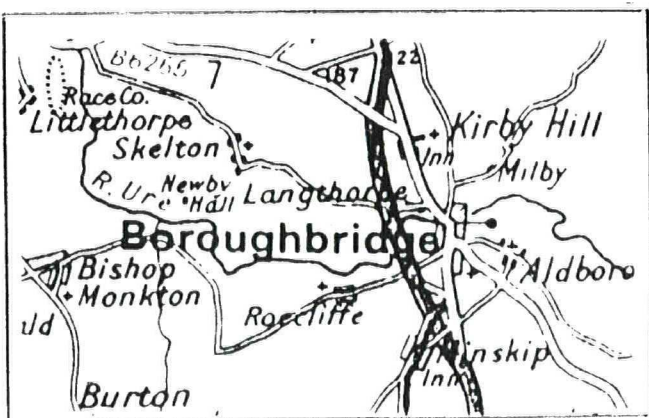
Site code: 1990.5000

NGR : SE 40626657

Drawn : R.M. 27/06/90



99999 00243.



YORK ARCHAEOLOGICAL TRUST

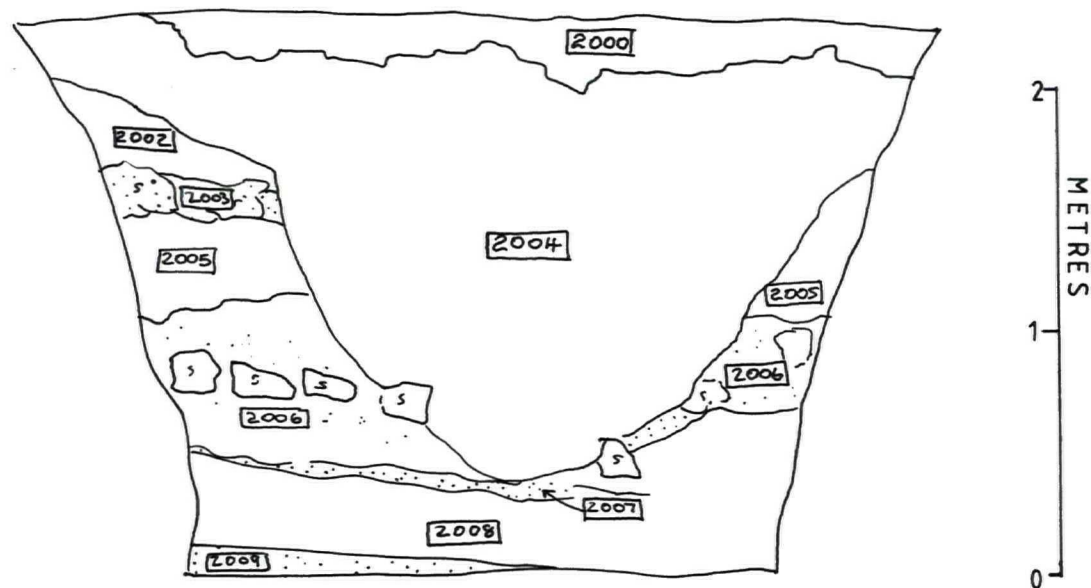
Sutton Farm, Aldborough.

Site code: 1990.5000

NGR: SE 40626657

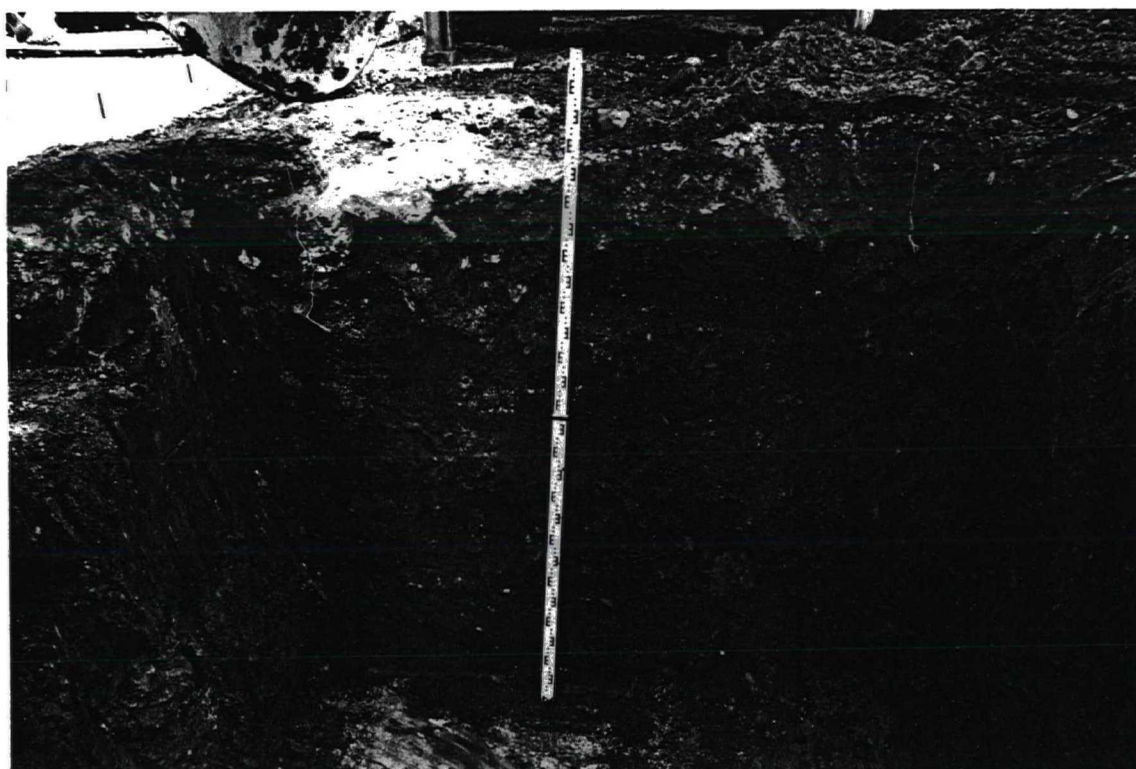
Drawn: R.M. 27/6/90

Interceptor pit, west facing section



- 2000 Modern building rubble
2002 Brown friable silty loam
2003 Red sandstone and sand
2004 Loamy fill of cut
2005 Red sandstone blocks and sand
2006 Red sandstone blocks and sand
2007 Yellow sandstone and sand
2008 Dark silty loam
2009 Yellow sand, natural

99999 00245



YORK ARCHAEOLOGICAL TRUST

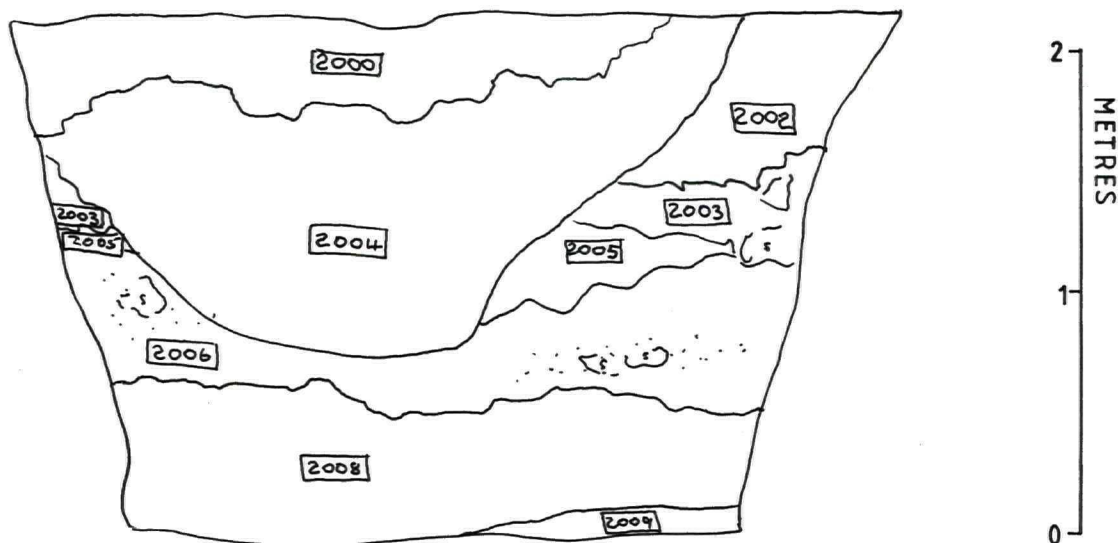
Sutton Farm, Aldborough.

Site code: 1990.5000

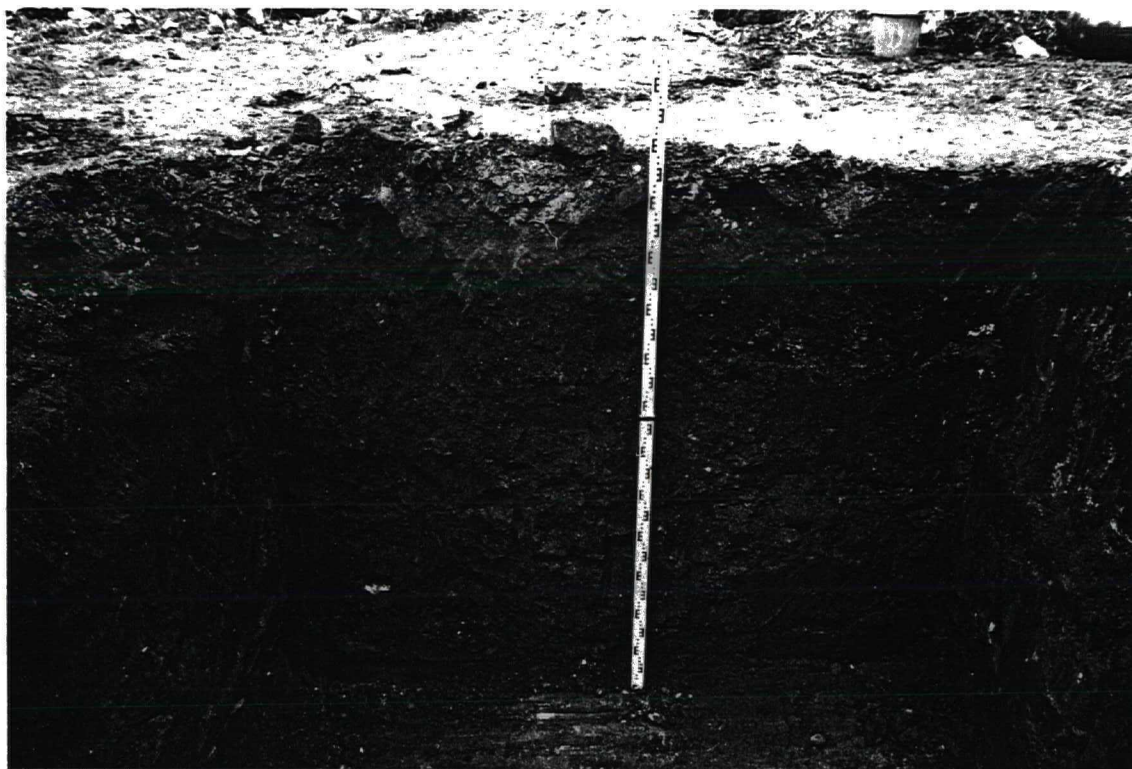
NGR: SE 40626657

Drawn: R.M. 27/6/90

Interceptor pit, east facing section



- 2000 Modern building rubble
- 2002 Brown friable silty loam
- 2003 Red sandstone and sand
- 2004 Loamy fill of cut
- 2005 Brown friable silty loam
- 2006 Red sandstone blocks and sand
- 2008 Dark silty loam
- 2009 Yellow sand, natural



YORK ARCHAEOLOGICAL TRUST

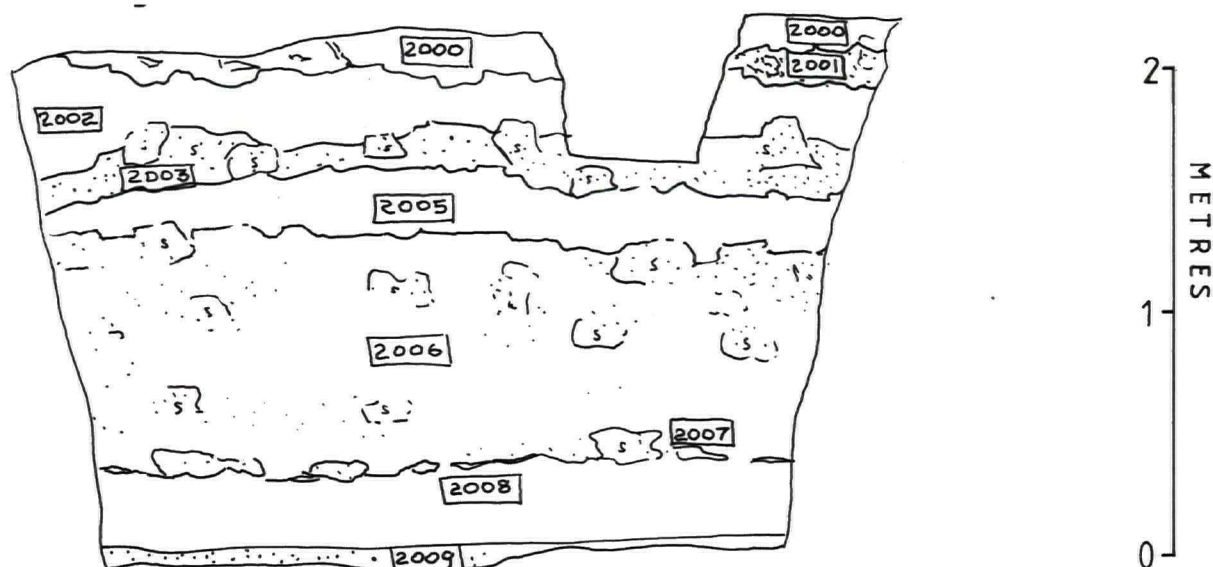
Sutton Farm, Aldborough.

Site code: 1990.5000

NGR: SE 40626657

Drawn: R.M. 27/6/90

Interceptor pit, south facing section



- 2000 Modern building rubble
- 2001 Limestone hardcore
- 2002 Brown friable silty loam
- 2003 Red sandstone and sand
- 2005 Brown friable silty loam
- 2006 Red sandstone blocks and sand
- 2007 Yellow sandstone and sand
- 2008 Dark silty loam
- 2009 Yellow sand, natural

