

Plate 1.
Trench 1. Before excavation. Facing east.

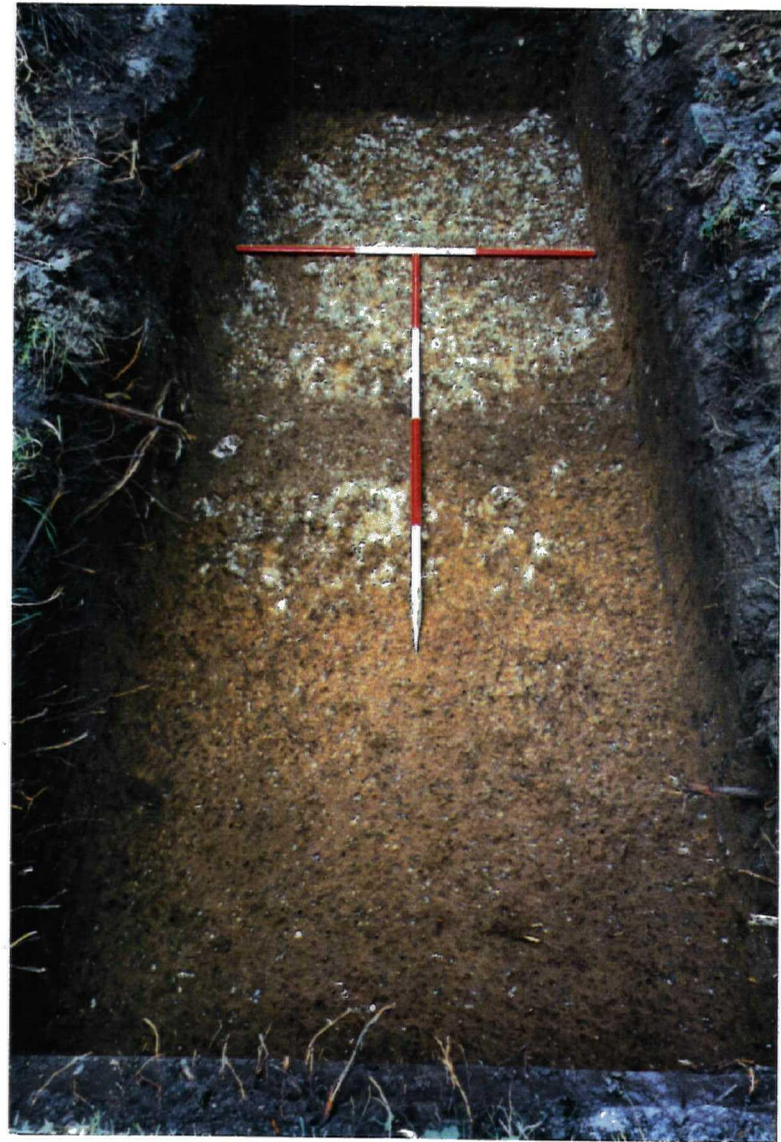


Plate 2.
Trench 2. Before excavation. Facing south.



Plate 3.
Trench 3. Before excavation. Facing west.



Plate 4.
Trench 4. Before excavation. Facing east.



Plate 5.
Trench 5 Before Excavation, Facing West.



Plate 6.
Trench 6 After Excavation, Facing South.

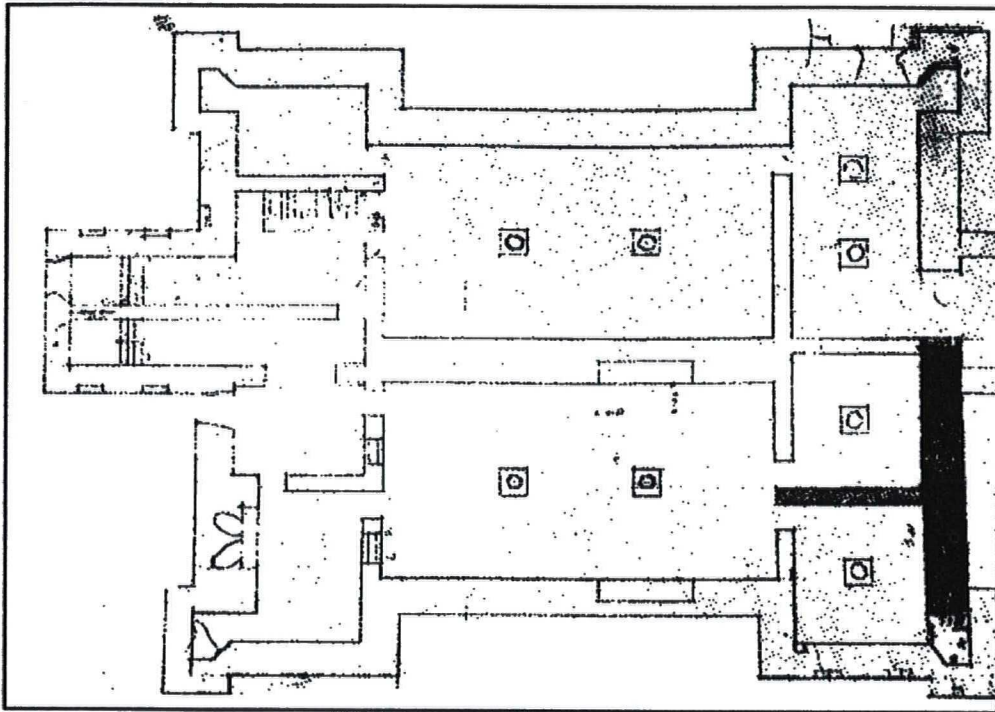


Plate 7.
The Basement Plan of Slingsby, from a drawing of c. 1700.

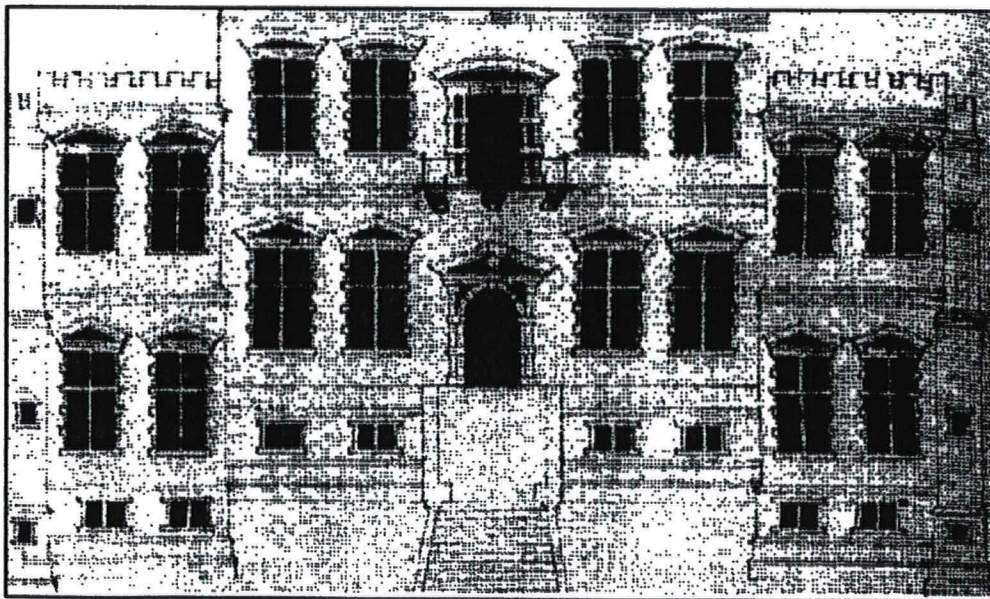


Plate 8.
John Smythson's Plan for Slingsby Castle, North Yorkshire, c. 1630 (III/12 (I)).