



Plate 1. Area 1- Footpath after removal of surfacing. Facing south.



Plate 2. Area 1- North-western branch of path at finished excavation level. Facing north-west.



Plate 3. Skeleton 1043. Facing west.



Plate 4. Skeleton 1043, showing *in situ* coffin fittings. Facing west.



Plate 5. Skeleton 1011. Facing west.

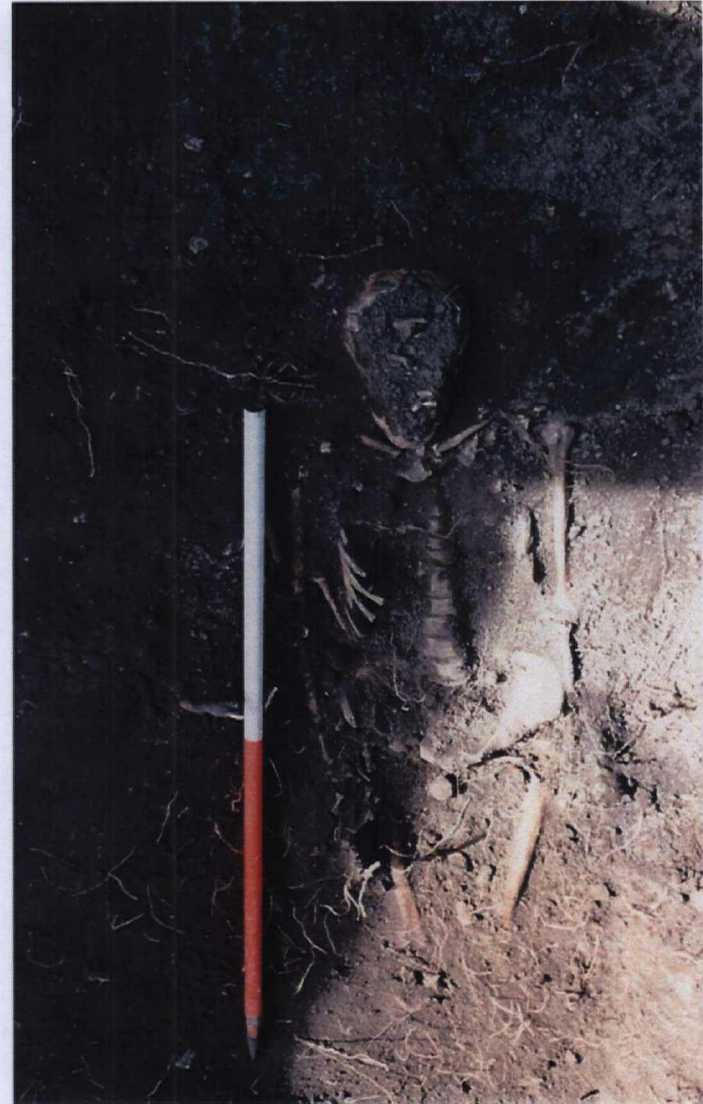


Plate 6. Skeleton 1012. Facing west.



Plate 7. Skeleton 1005 under excavation. Facing east.

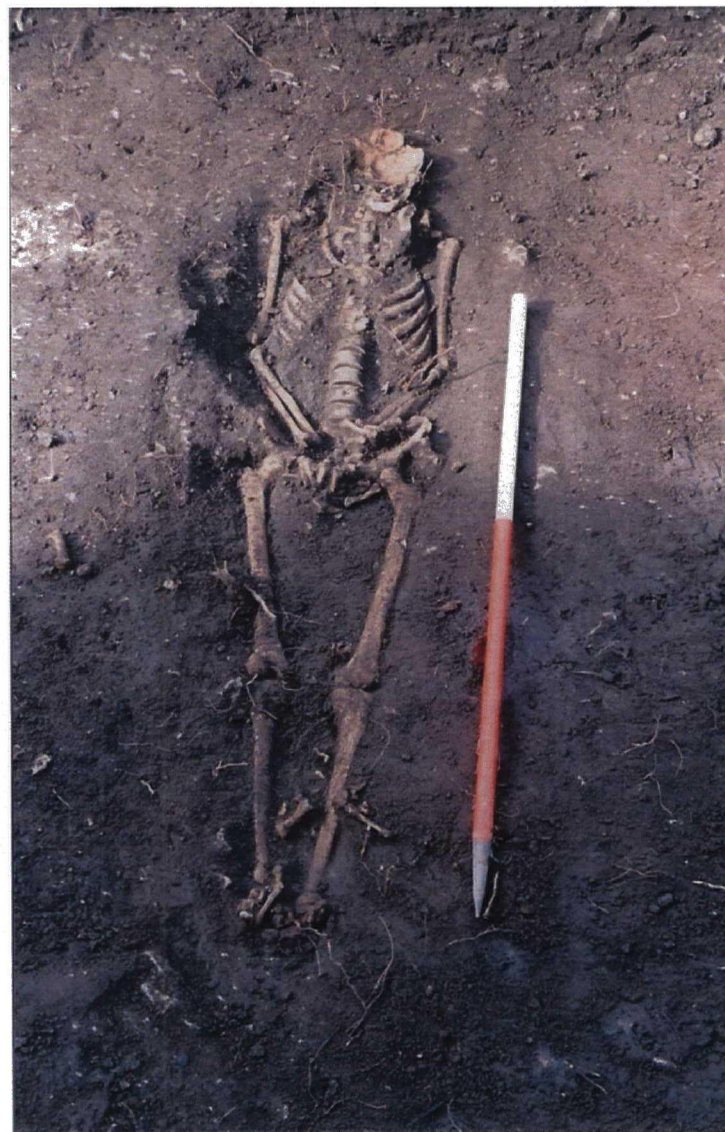


Plate 8. Skeleton 1005. Facing west.



Plate 9. Working shot of Area 2 under excavation. Facing south-west.



Plate 10. Area 2 showing Wall 1029 (rear), Wall 1036 (middle) and Walls 1037 and 1039 (foreground) Facing south-west.



Plate 11. Graffito on Wall 1029. Facing north



Plate 12. Flue 1031 truncating Wall 1036. Facing west.



Plate 13. Re-used gravestone 1020. Facing north.



Plate 14. Area 2 showing final excavation level. Facing south-west.



Plate 15. Shot of reburial Pit, facing south

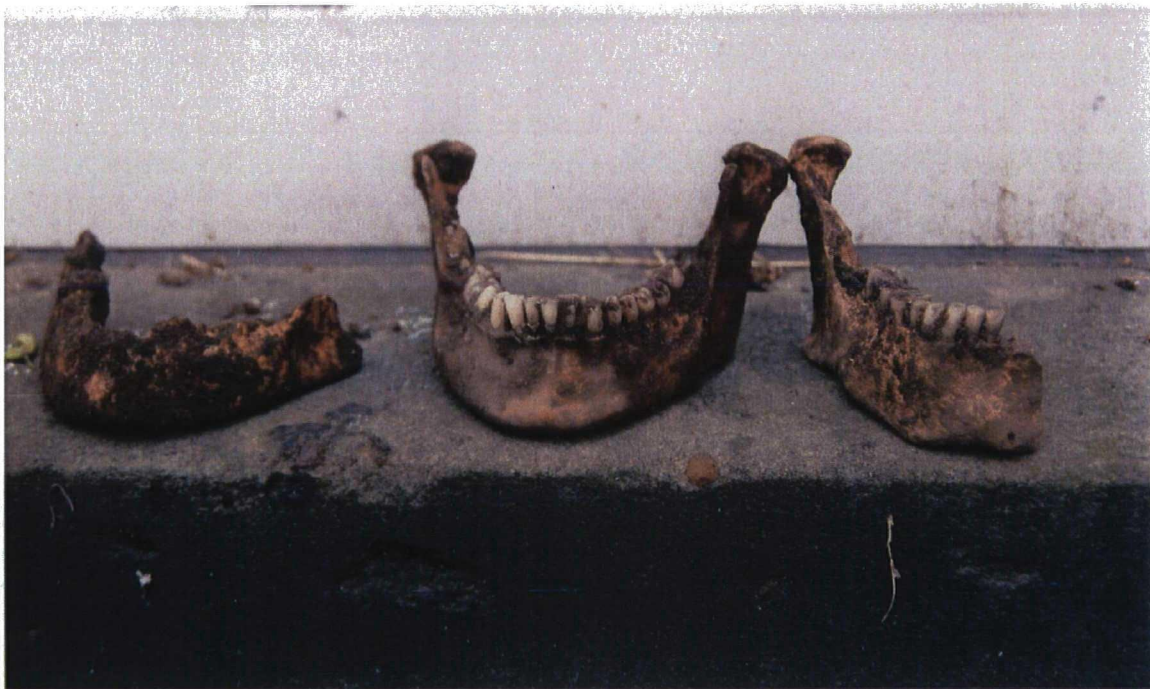


Plate 16. Some of the human remains from context 2003