

Figure 7. Earthwork Survey Sites.

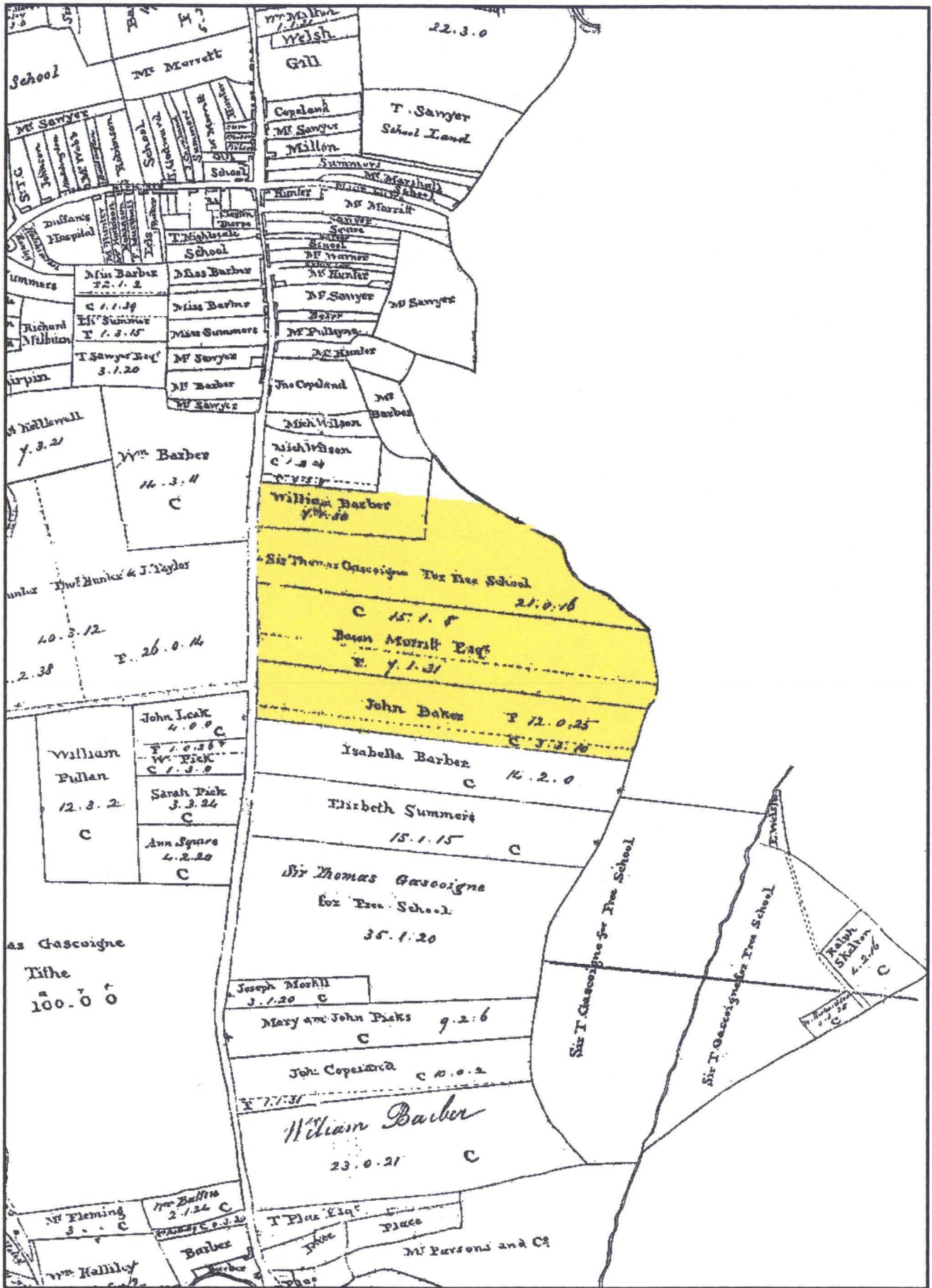


Figure 8. 1770 Enclosure map for Sherburn-in-Elmet.

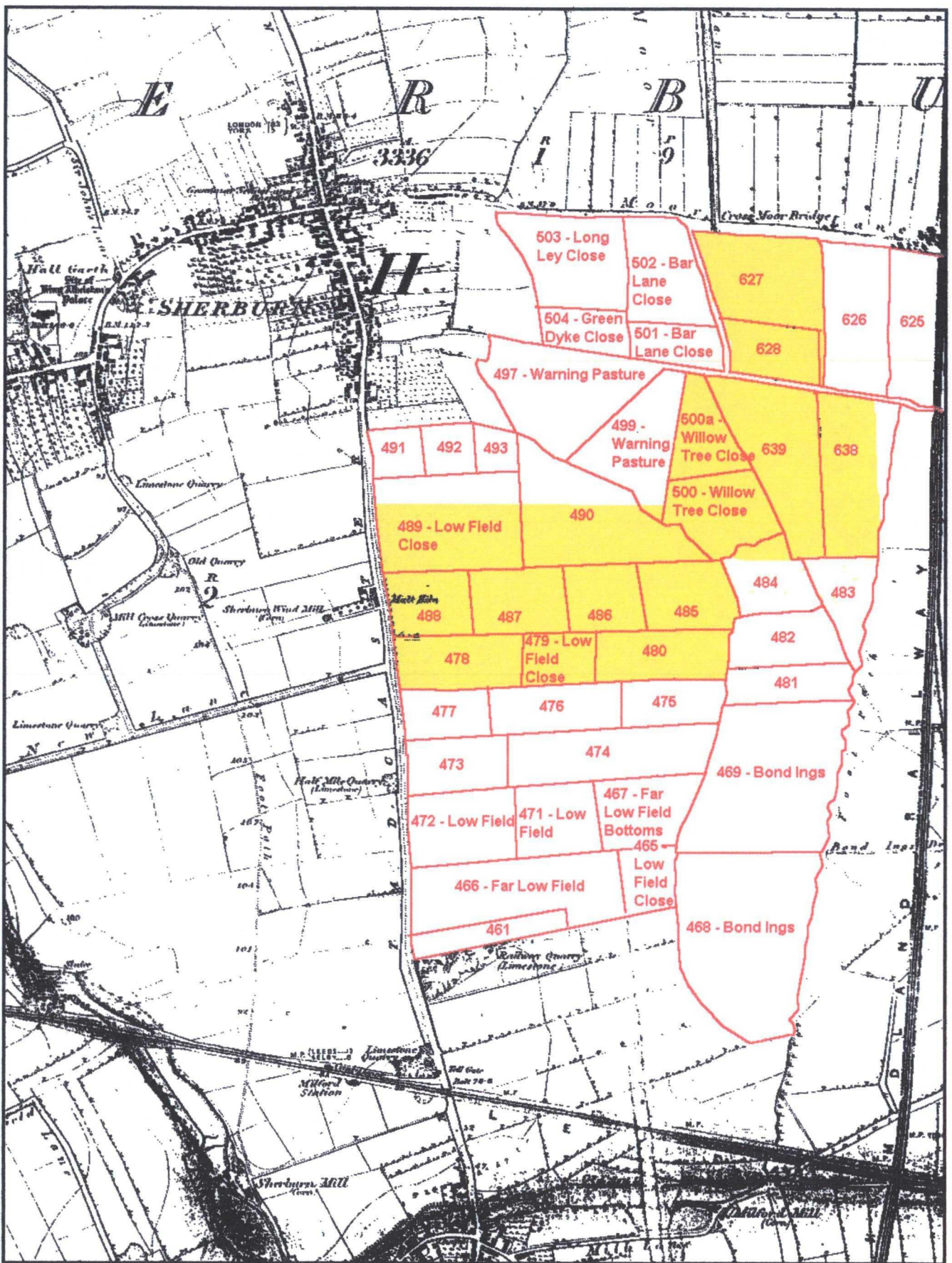


Figure 9. Land divisions in 1824, based on an Estate map of Sherburn.

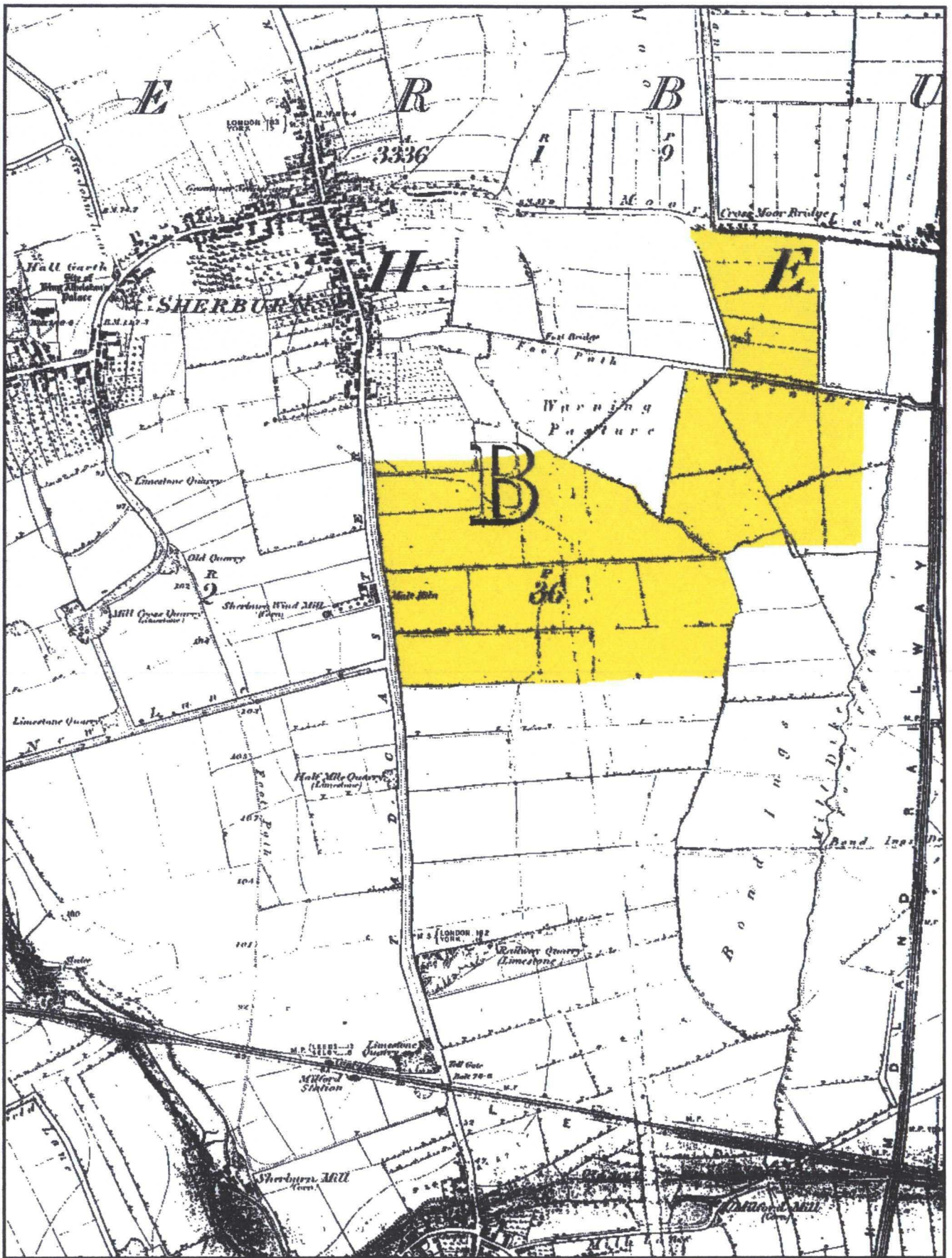


Figure 10. Land divisions, c.1850. First Edition Ordnance Survey Map.

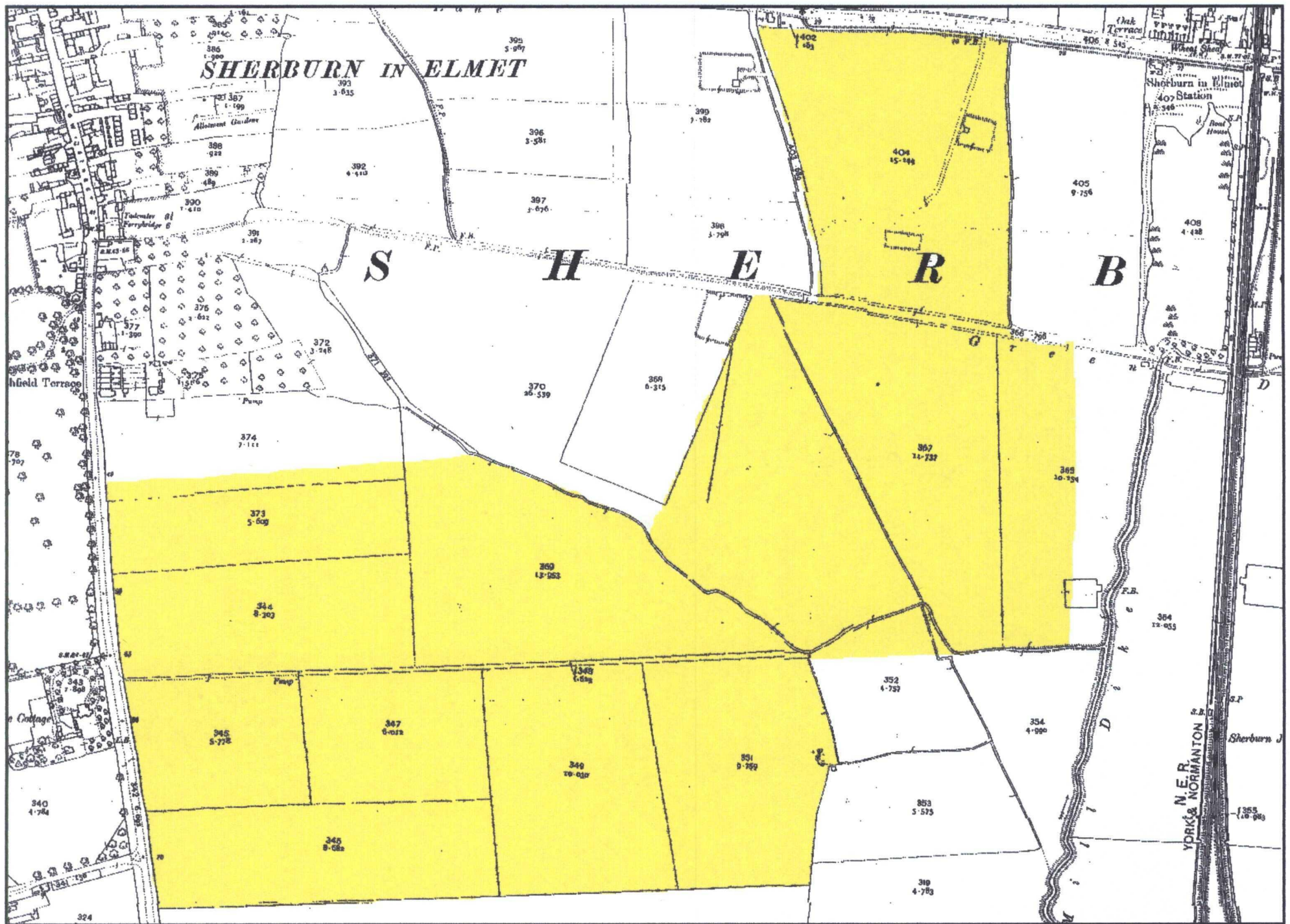


Figure 11. Land divisions, c. 1908. Ordnance Survey County Series Map. Scale 1:5000.

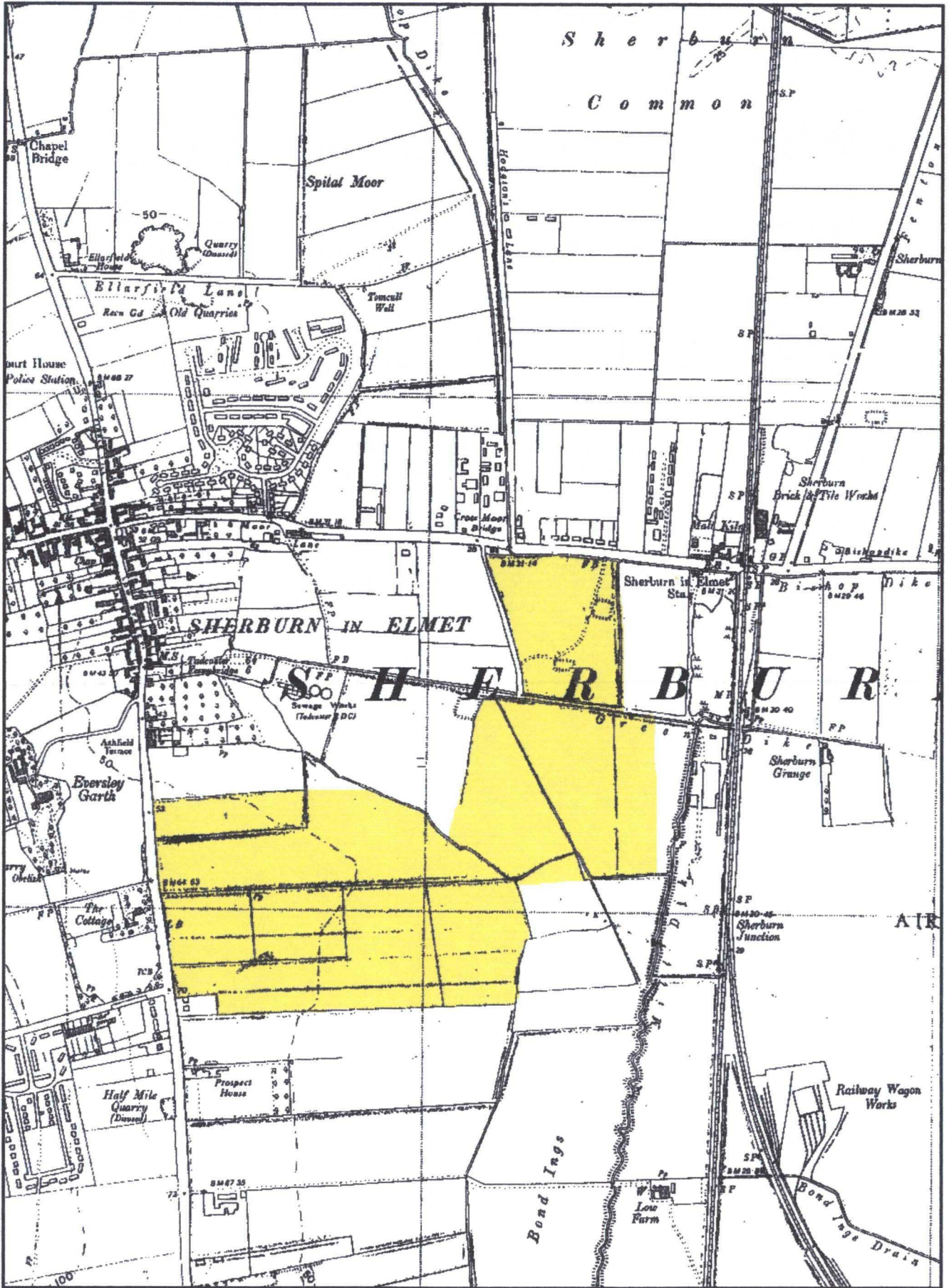


Figure 12. Land divisions, c. 1950. Ordnance Survey 1:10560 Map.

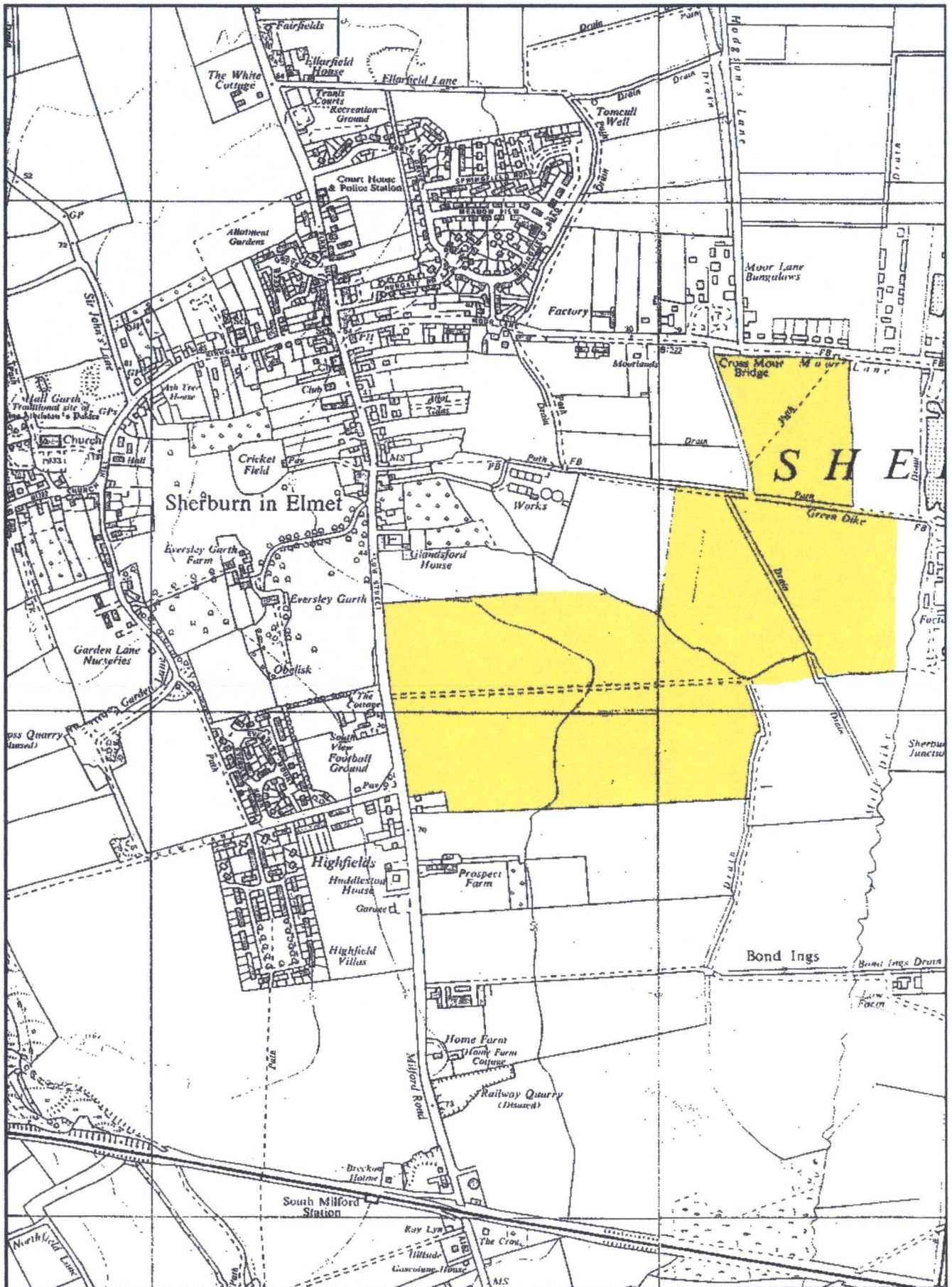


Figure 13. Land divisions, c. 1967. Ordnance Survey 1:10560 Map.

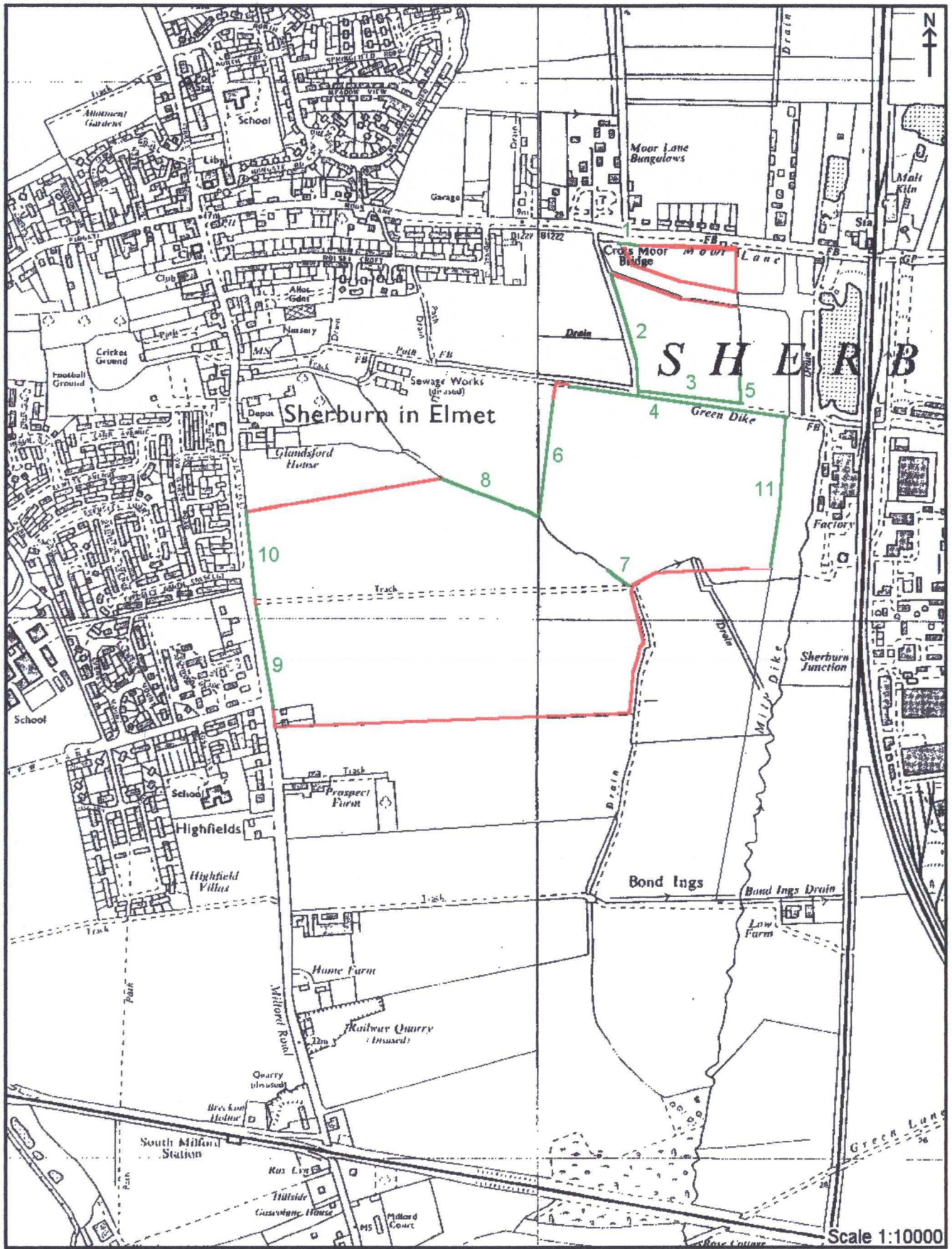


Figure 14. Hedge survey location plan.



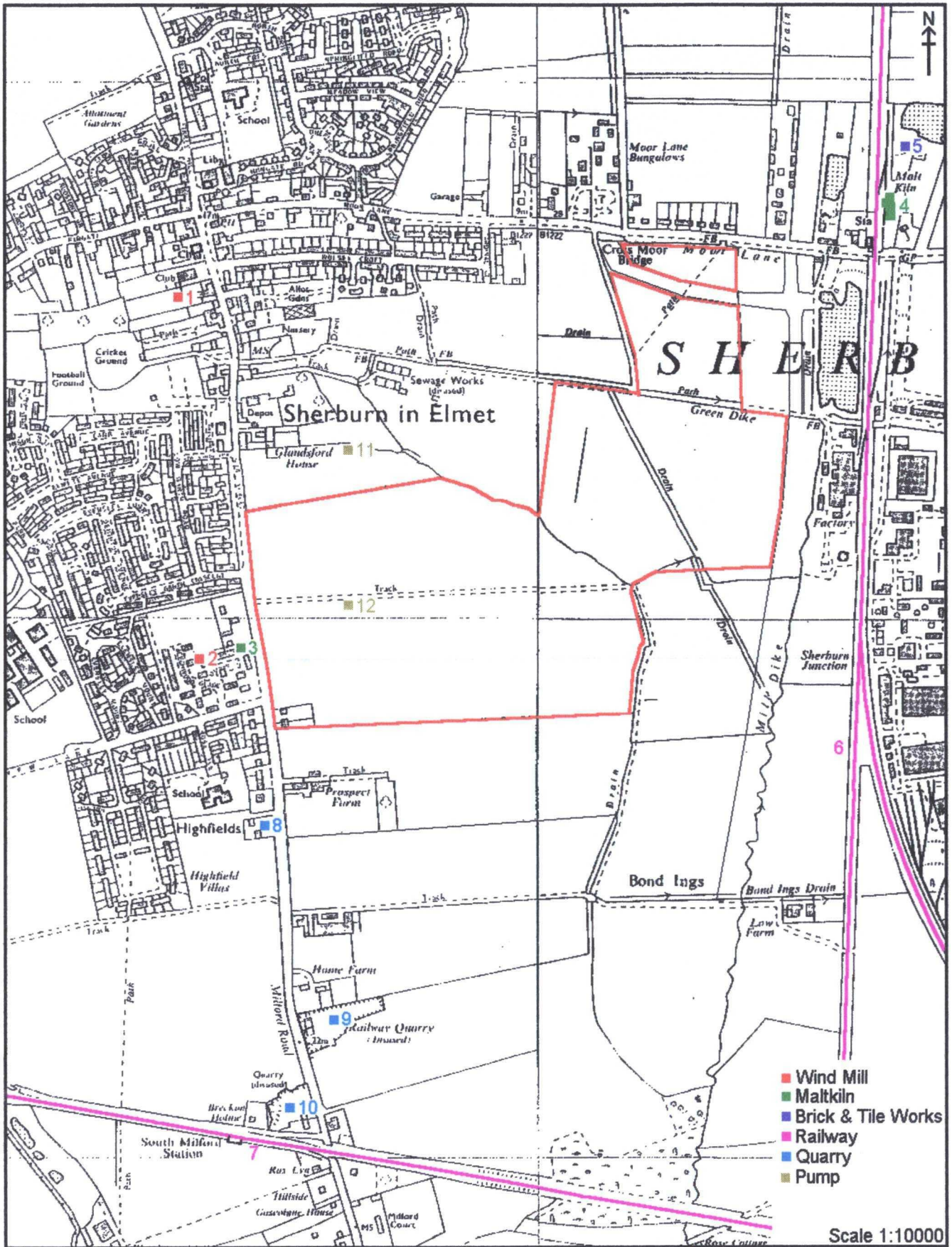


Figure 15. Industrial sites.

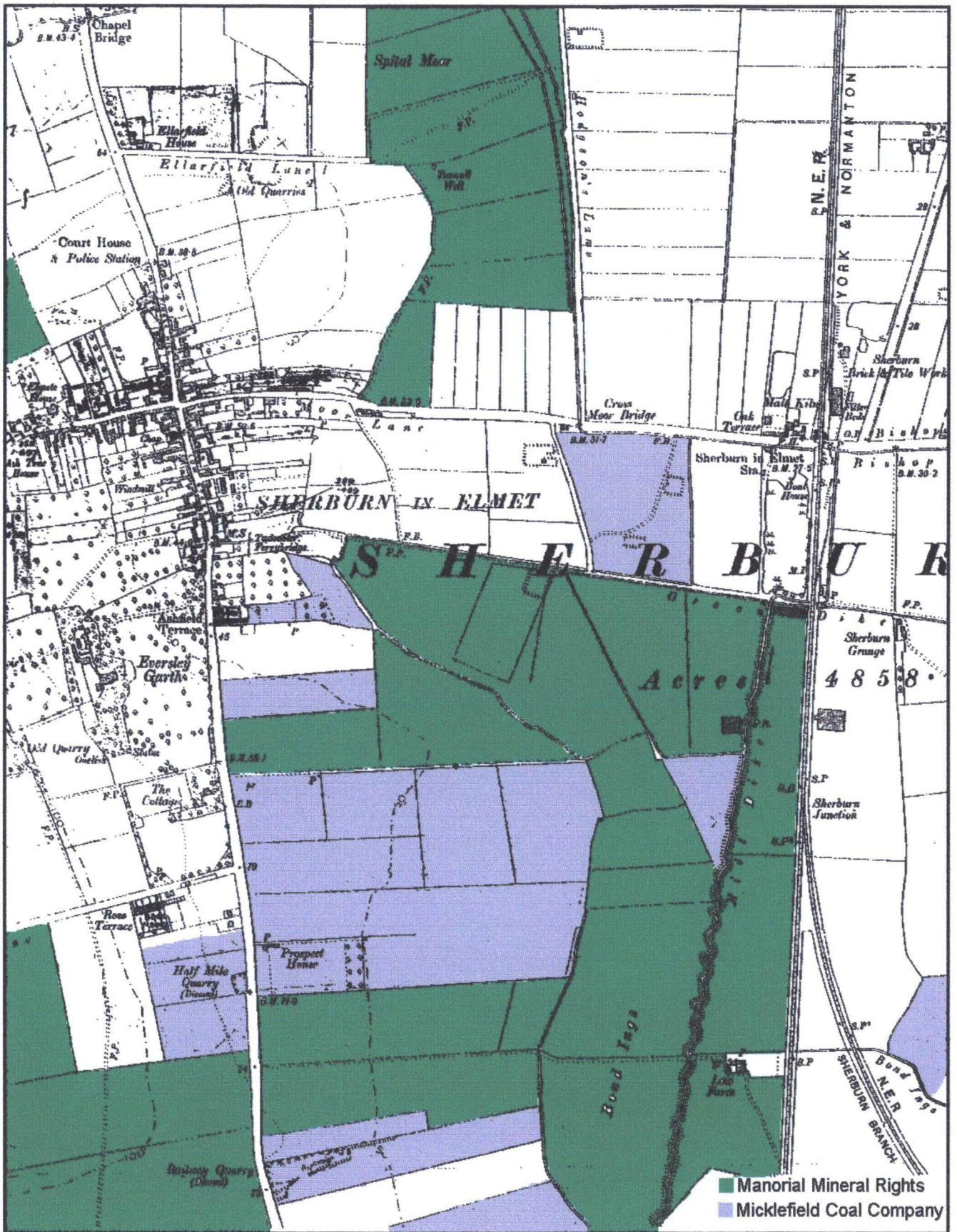


Figure 16. Mineral Rights - Coal (c. 1937).

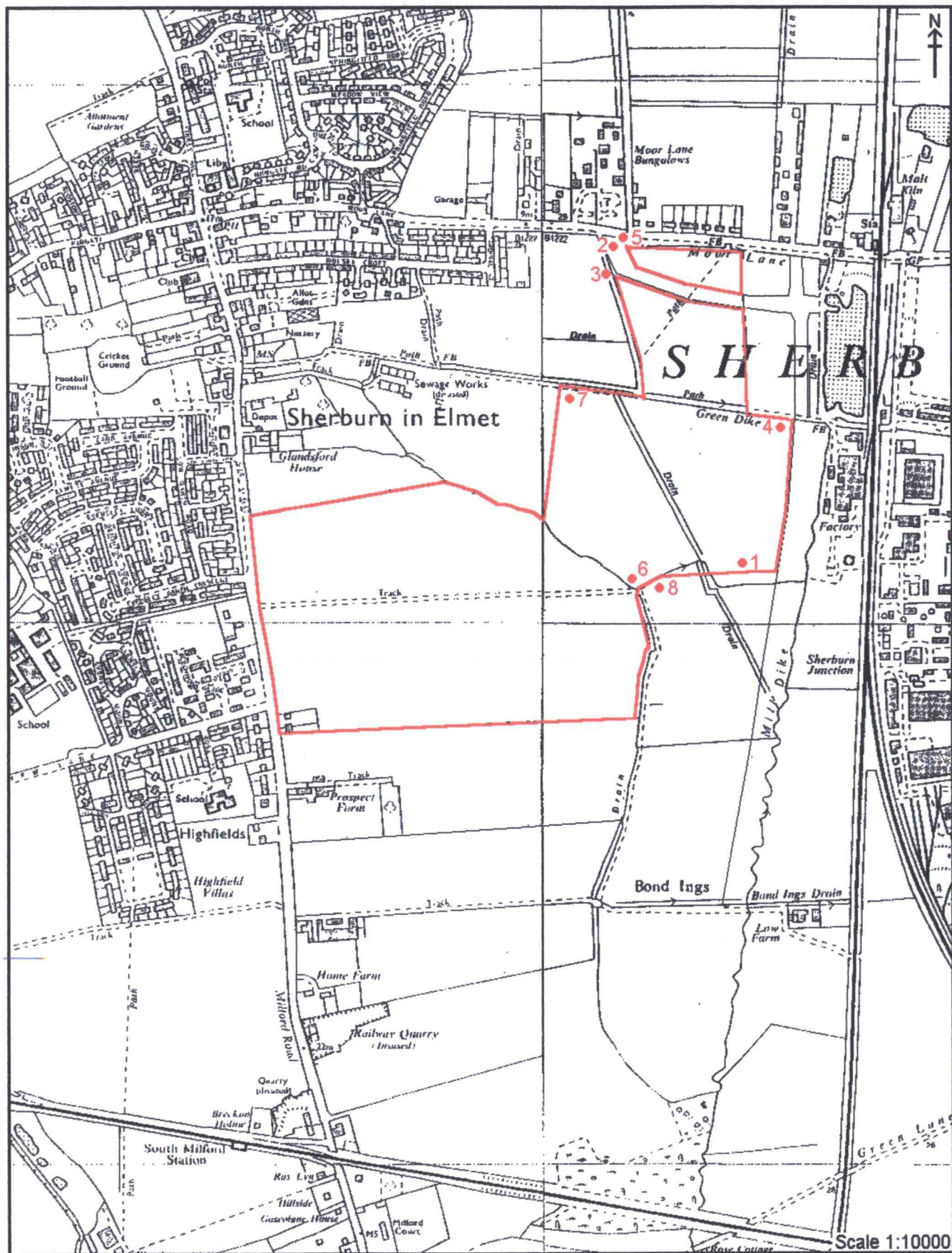


Figure 17. Location of colour plates 1 to 8.



Plate 1.  
General view of Areas A, B and D. Facing west.



Plate 2.  
Genral view of Area C. Facing east.



Plate 3.  
General view of Area D. Facing south-east.



Plate 4  
General view of Area E. Facing south-west.



Plate 5  
View of Bishops Dike. Facing east.



Plate 6.  
View of dike separating Areas B and D. Facing east.

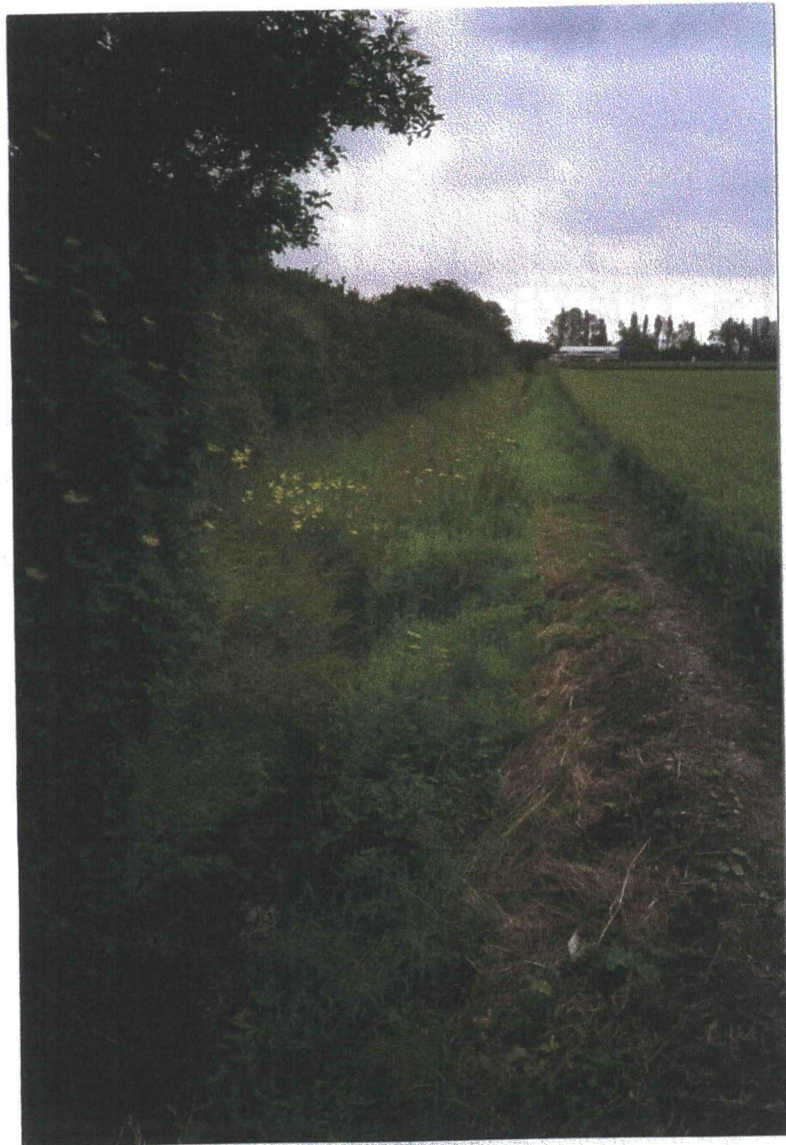


Plate 7.  
View of Green Dike. Facing east.

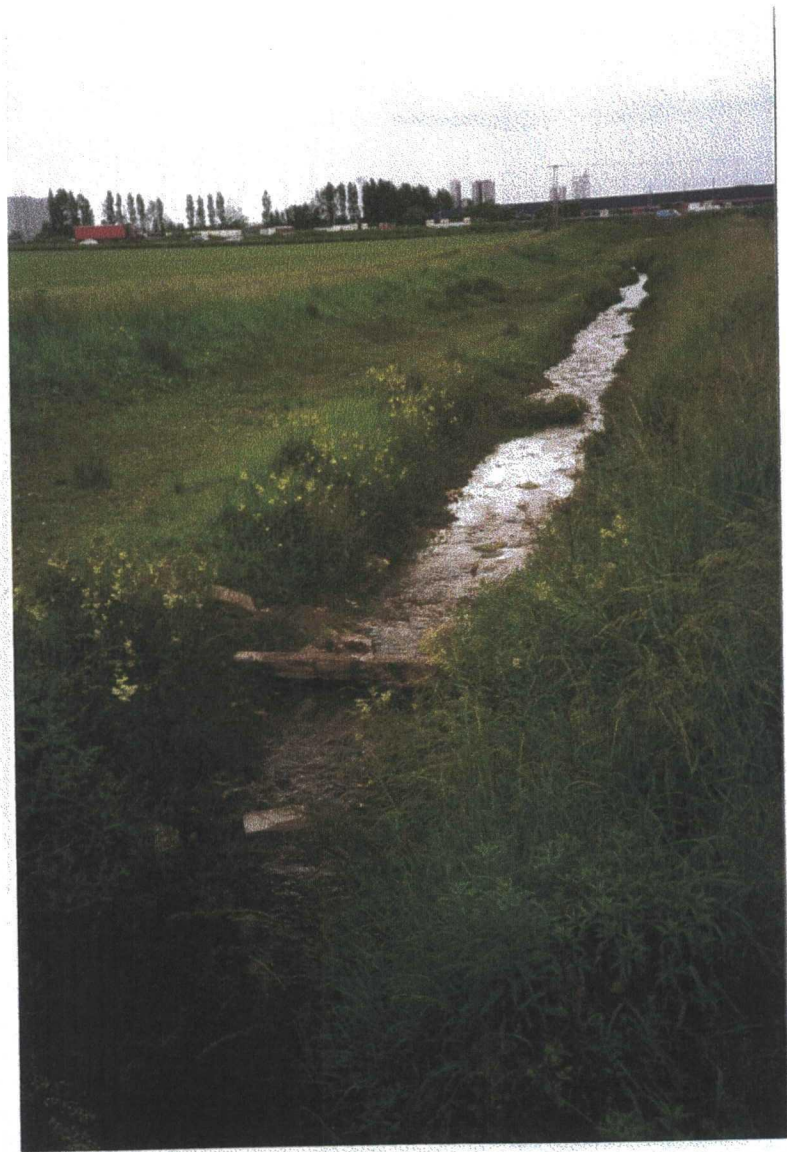


Plate 8.  
View of modern dike running into Mill Dike. Facing east.