

- 1 Undated
- 2 Prehistoric
- 3 Bronze Age
- 4 Iron Age
- 5 medieval/post medieval

**Fig. 2:** Plan showing archaeological sites within a 1km radius of the proposed development area. Sites plotted from the NYSMR are shown in red, those from Stoertz, 97 in green and those from Dennison 03 in blue. The period of the site is indicated by the colour of the text, according to the above table. Where these plots substantially disagree then each version is shown.  
1:10,000

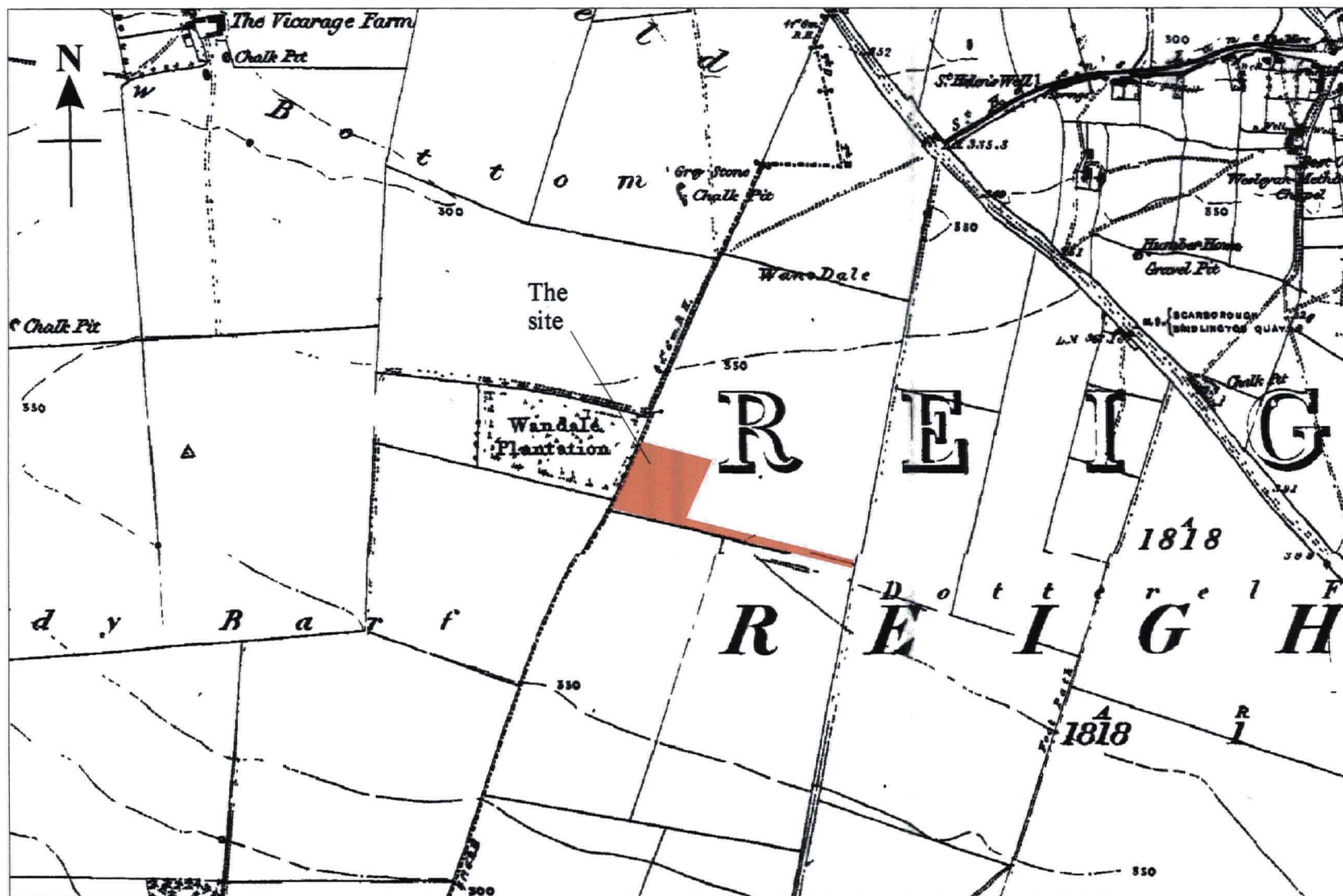


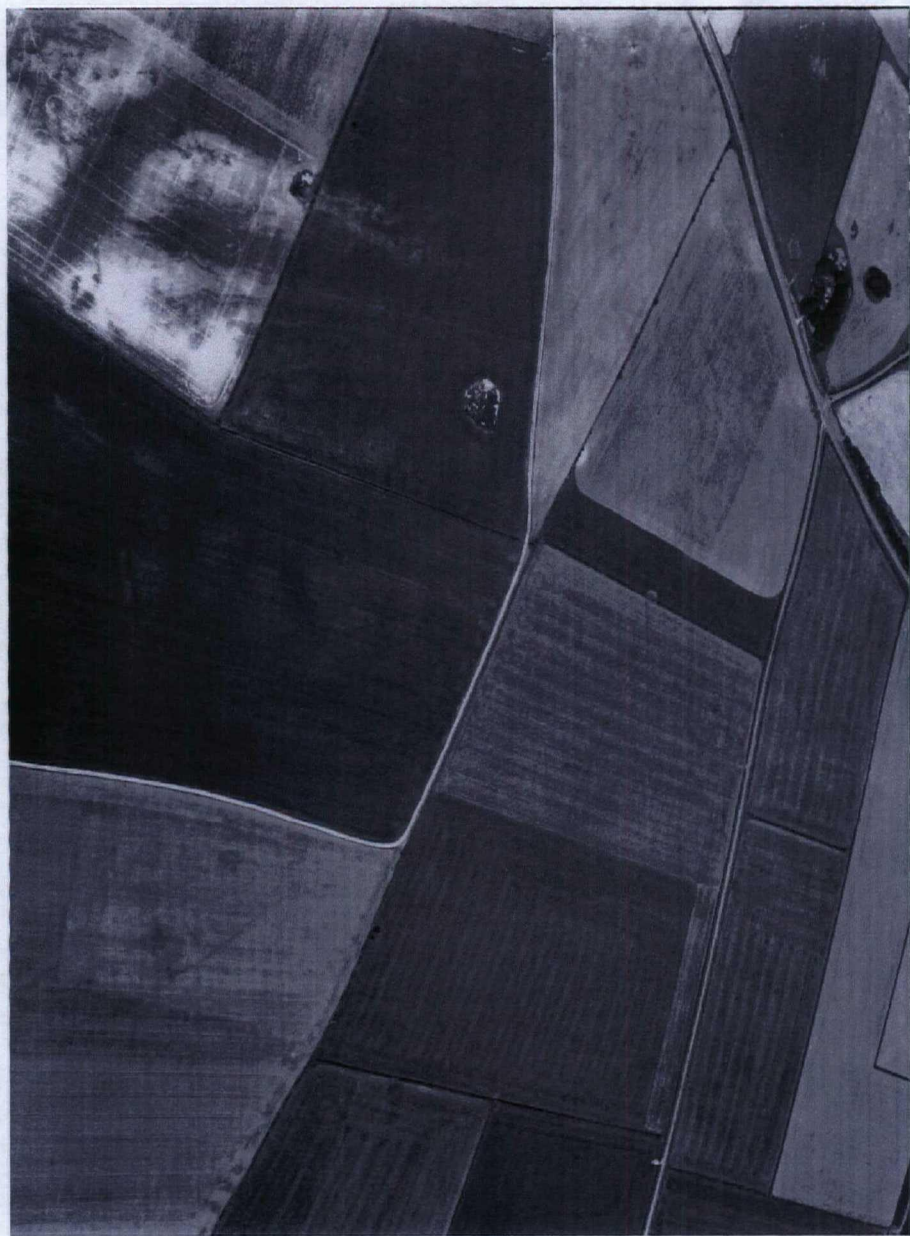
Fig. 3: Excerpt from the 1st edition O.S. map (1854)  
Not to scale





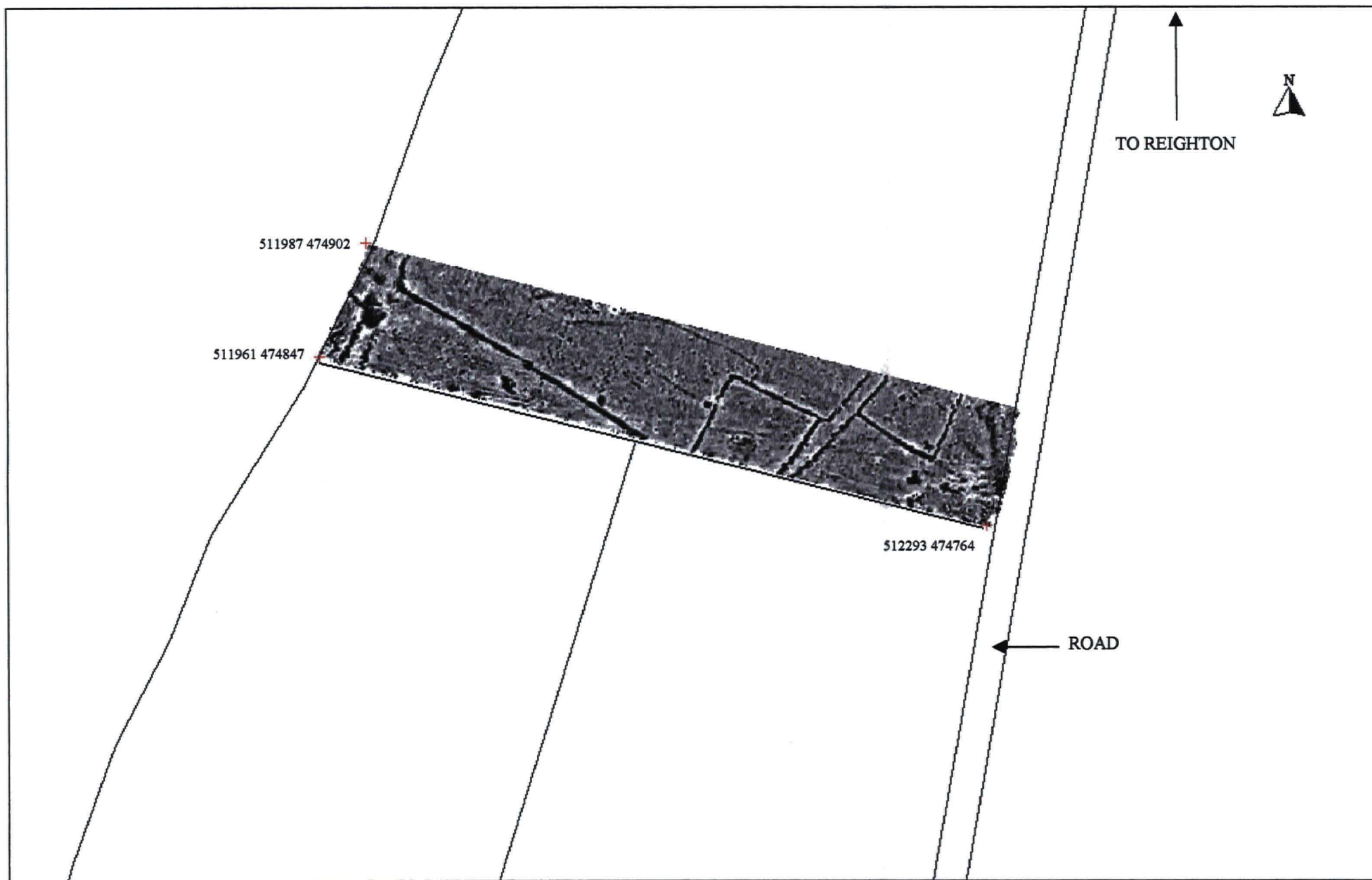
**Fig. 4:** Aerial photograph showing cropmarks in the vicinity of the site. Shown are Sites 20 & 35 as well as a feature located during the geophysical survey. The wide dark strip to the bottom left of image may be ploughed-out bank material. Reproduced from TA 1275/4-NMR 2146/1096





**Fig. 5:** Aerial photograph showing cropmarks in the vicinity of the proposed development. Shows Sites 5, 20 & 15 as well as a feature located during the geophysical survey. Reproduced from OS/94256, Frame 007.

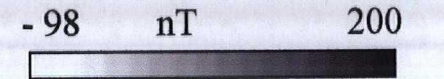
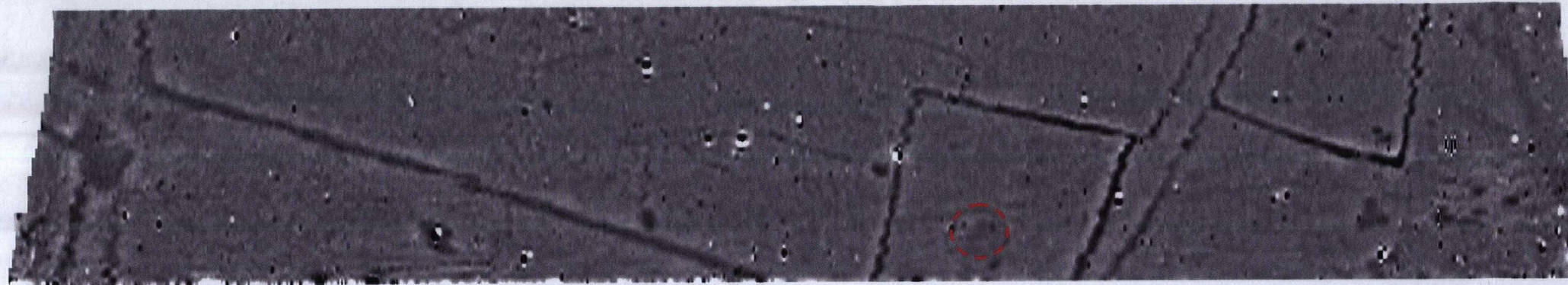




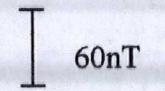
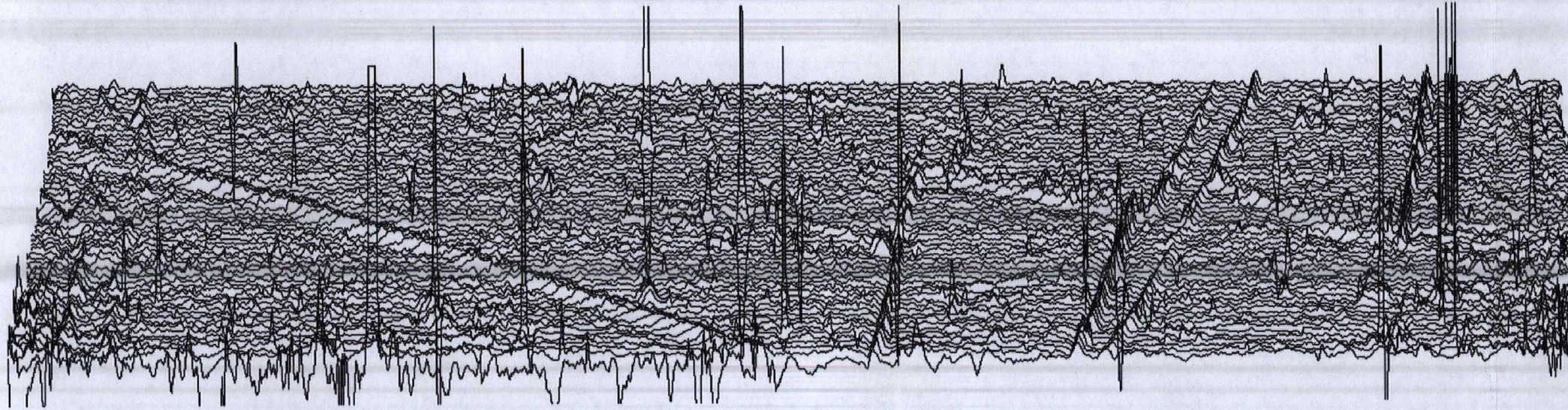
**Fig. 6:** Location of gradiometer plot, scale 1:2,500



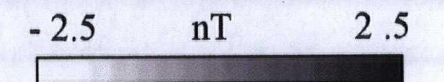
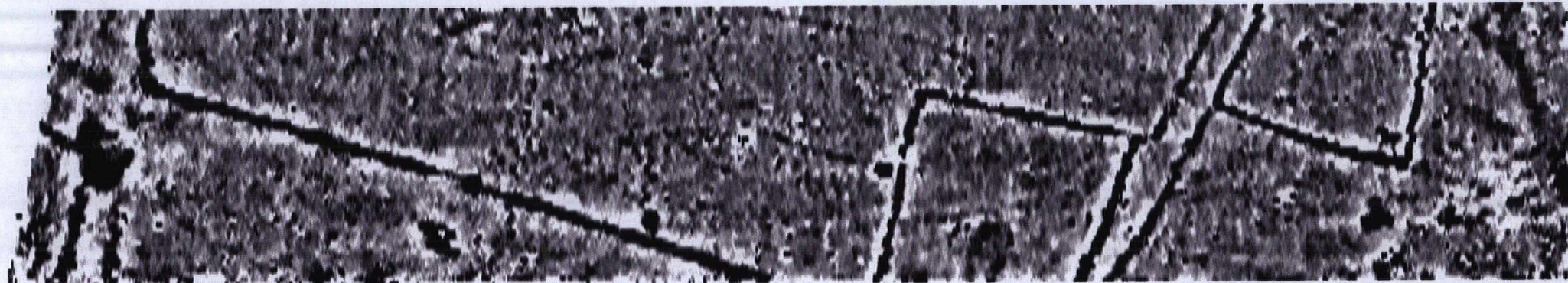
RAW DATA



TRACE PLOT OF UNCLIPPED DATA



ENHANCED DATA



INTERPRETIVE PLOT

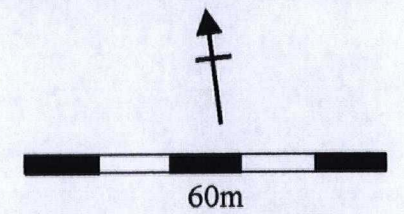
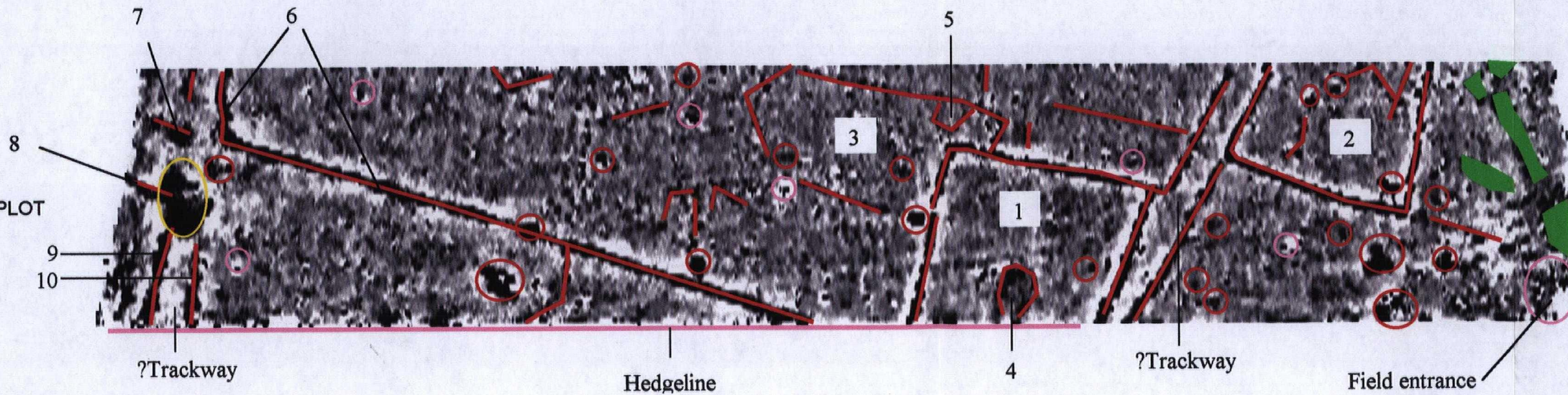


Fig 7: Greyscale and trace plots of raw and enhanced data with interpretive plan, scale - 1:1250